

# SILVER CITY MINERALS LIMITED

ABN 68 130 933 309



ASX Code: SCI

## **GOLD SYMPOSIUM OCTOBER 2014**

## Important Disclaimer

This material contains certain forecasts and forward-looking information, including information about possible or assumed future performance, exploration results, resources or potential growth of Silver City Minerals Limited (SCI), industry growth or other trend projections. Such forecasts and information are not a guarantee of future performance and involve unknown risks and uncertainties, as well as other factors, many of which are beyond the control of Silver City Minerals Limited. Actual results and developments may differ materially from those expressed or implied by these forward-looking statements, depending on a variety of factors. Nothing in this material should be construed as the solicitation of an offer to buy or sell SCI securities. Information in this presentation has previously been reported to the ASX.

## Competent Person

Information in this document that relates to Exploration Results, Mineral Resources or Ore Reserves is based on information compiled by Christopher Torrey, who is the Managing Director and full-time employee and shareholder of Silver City Minerals Limited, and a Member of the Australian Institute of Geoscientists. Mr Torrey has sufficient experience which is relevant to the style of mineralisation and type of deposit under consideration and to the activity which he is undertaking to qualify as a Competent Person as defined in the 2012 Edition of the “Australasian Code for Reporting of Exploration Results, Mineral Resources and Ore Reserves”. Mr Torrey consents to the inclusion in the report of the matters based on his information in the form and context in which it appears.



# ABOUT SILVER CITY

Explorer with focus on world class mining camps...high grade base and precious metal deposits

- **Broken Hill, NSW:** massive sulphides (silver, lead, **zinc**)
- **North Queensland:** intrusion-related (**gold**, copper)
- **New Zealand:** high grade **gold-silver** epithermal setting



# SILVER CITY MINERALS LIMITED

ASX Code:	SCI
Issued Shares:	116.3 million
Listed Options:	29.2 million
Unlisted Options:	8.7 million
Market Cap:	\$5.0 million
Cash: (end June 2014)	\$3.8 million

## Major Shareholders:

The Sentient Group:	17.74%
Variscan Group:	12.47%
Fitel Nominees:	5.99%
Top 20 :	58.27%
Share Price:	High \$0.21   Low \$0.038



# DIRECTORS

## **Bob Besley**

### **Chairman**

Geologist with over 40 years experience in mining and exploration. Founder and original Managing Director of CBH Resources Limited. Bob took that company from inception as a junior explorer to a large zinc, lead and silver producer with a peak market cap of \$600m. Currently Non-Exec Director KBL Mining Limited.

## **Chris Torrey**

### **Managing Director**

Geologist with over 30 years experience in international mineral exploration. Senior management and consulting roles with Cyprus-Amax , ASX-listed Golden Cross Resources Ltd, US-listed Golden Minerals and predecessor Apex Silver. Played significant role in geological assessments of the Apex silver projects in Latin America especially the 60M oz El Quevar Silver Deposit in Argentina. Was charged with Business Development role in Australia. Past Chairman of Golden Cross Resources.

## **Ian Plimer**

### **Non-Executive Director**

Ian Plimer is inaugural Professor of Mining Geology (University of Adelaide) and Emeritus Professor of Earth Sciences at The University of Melbourne. Ian is considered to be the world expert on the geology of the Broken Hill orebody on which he has worked and published extensively since 1968. He was Director of CBH Resources Ltd (1998 -2010), was a Director of Ivanhoe Australia Ltd (ASX:IVA, TSX), Non-Exec Director of Ormil Energy Ltd (ASX:OMX) and Kefi Minerals (KEFI:L).

## **Greg Jones**

### **Non-Executive Director**

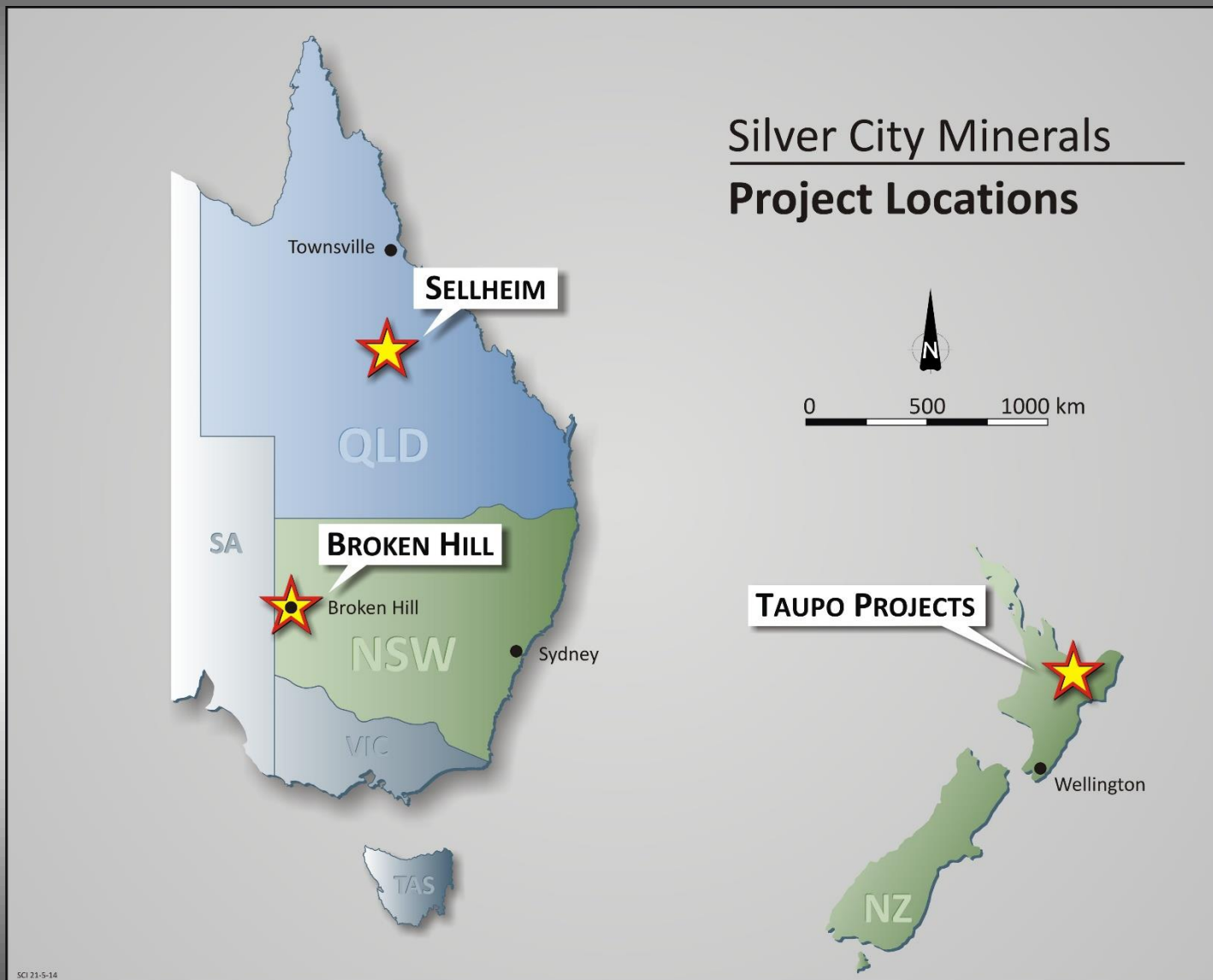
Greg is a geologist with 30 years exploration and mine operational experience. Senior management roles with Western Mining and Sino Gold. He currently holds directorships with ASX-listed companies PlatSearch NL, Eastern Iron Limited and Thomson Resources. Greg is currently the Managing Director of Variscan Mines Limited.

## **Ian Hume**

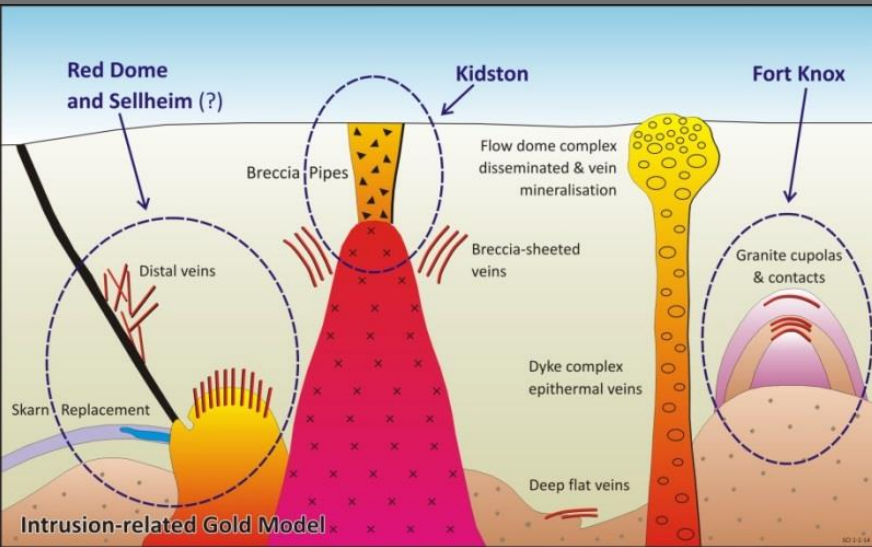
### **Non-Executive Director**

Ian was a founding partner of The Sentient Group, a private equity fund specialising in global investment in the resources sector. From 1994 to 2000, Mr Hume served as a consultant to AMP Society's Private Capital Division, focused on international mining and telecommunications investments primarily in North and South America, Russia and the Pacific Rim.

# SILVER CITY MINERALS PROJECTS

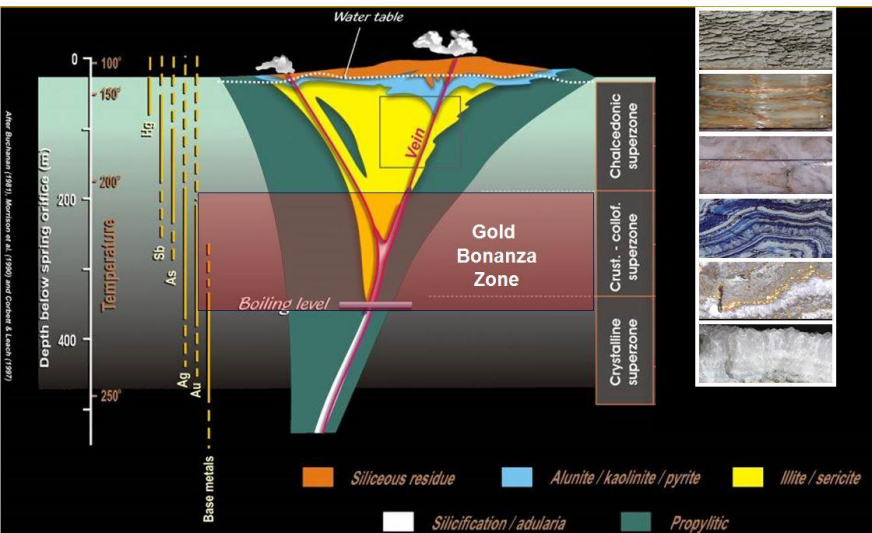


# SILVER CITY GOLD PROJECTS



## SELLHEIM

- Unique gold project within skarn and quartz veins near **Charters Towers, Queensland**
- Farm-in and JV deal can earn 80%



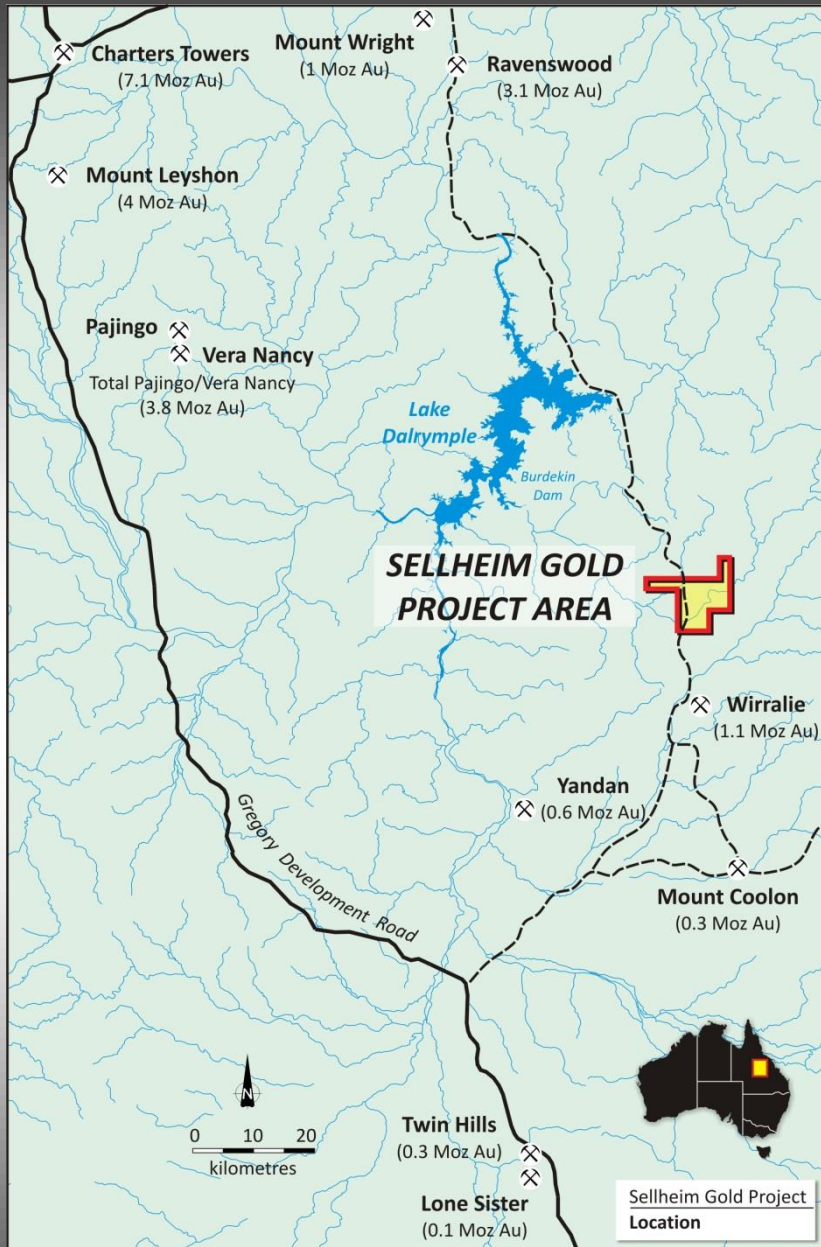
## TAUPO

- Epithermal gold in **New Zealand**.
- 100% SCI

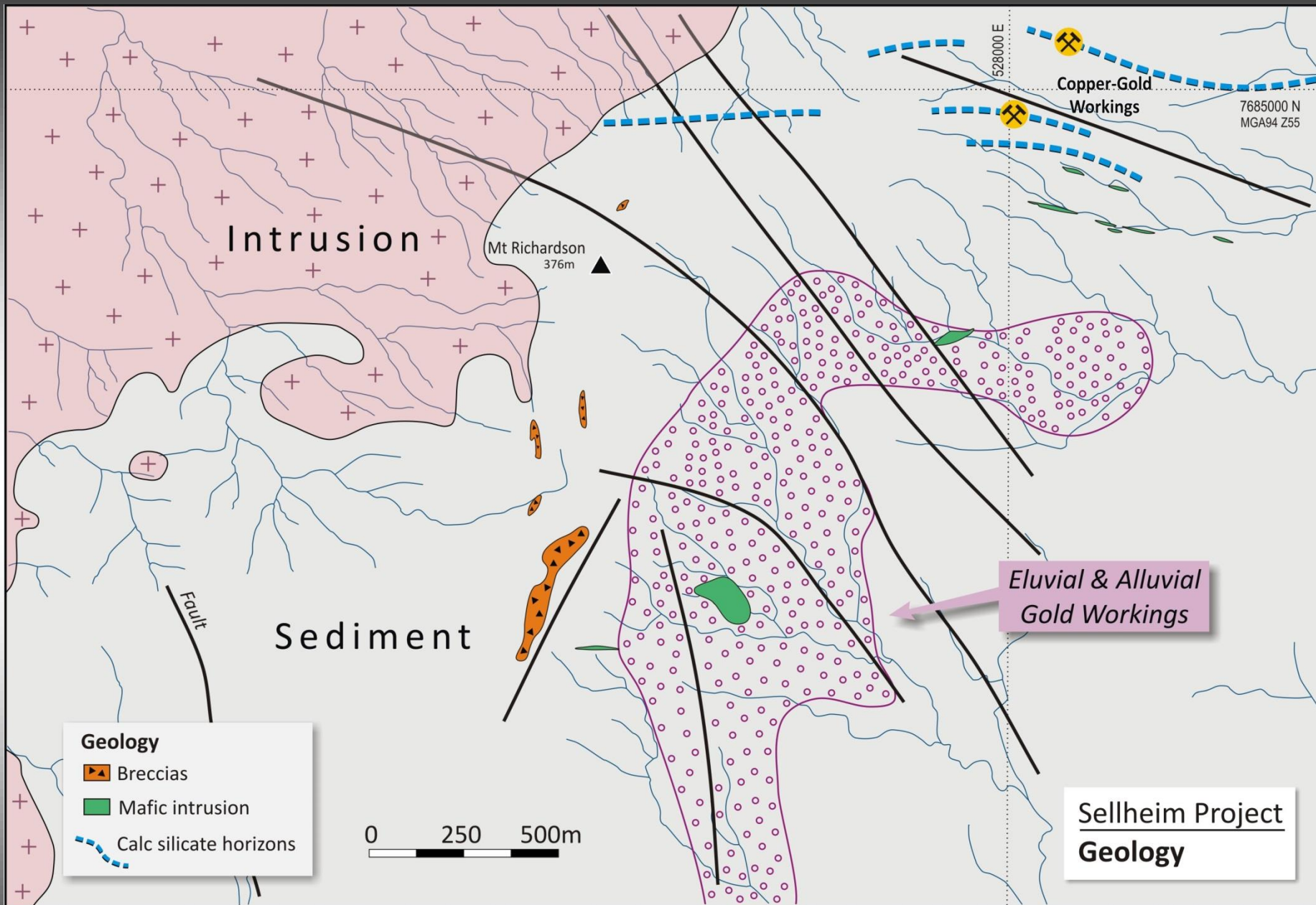


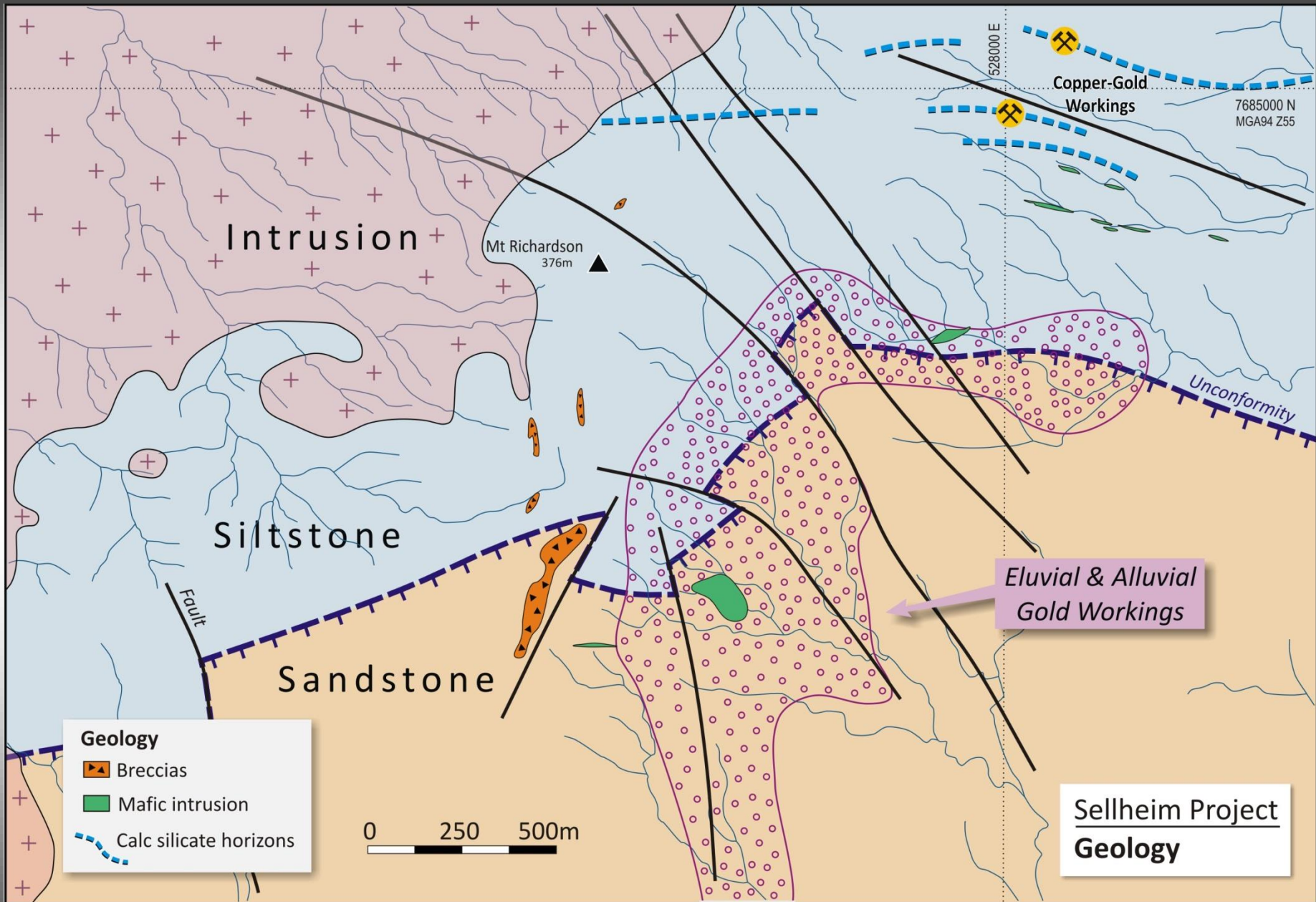
# SELLHEIM PROJECT

- Site of historic alluvial goldfield (1860s to present)
- Mining leases and EPMs
- Well endowed province: Charters Towers, Ravenswood, northern part of Drummond Basin with gold inventory of **approximately 20 million ounces**
- Intrusion-related gold model

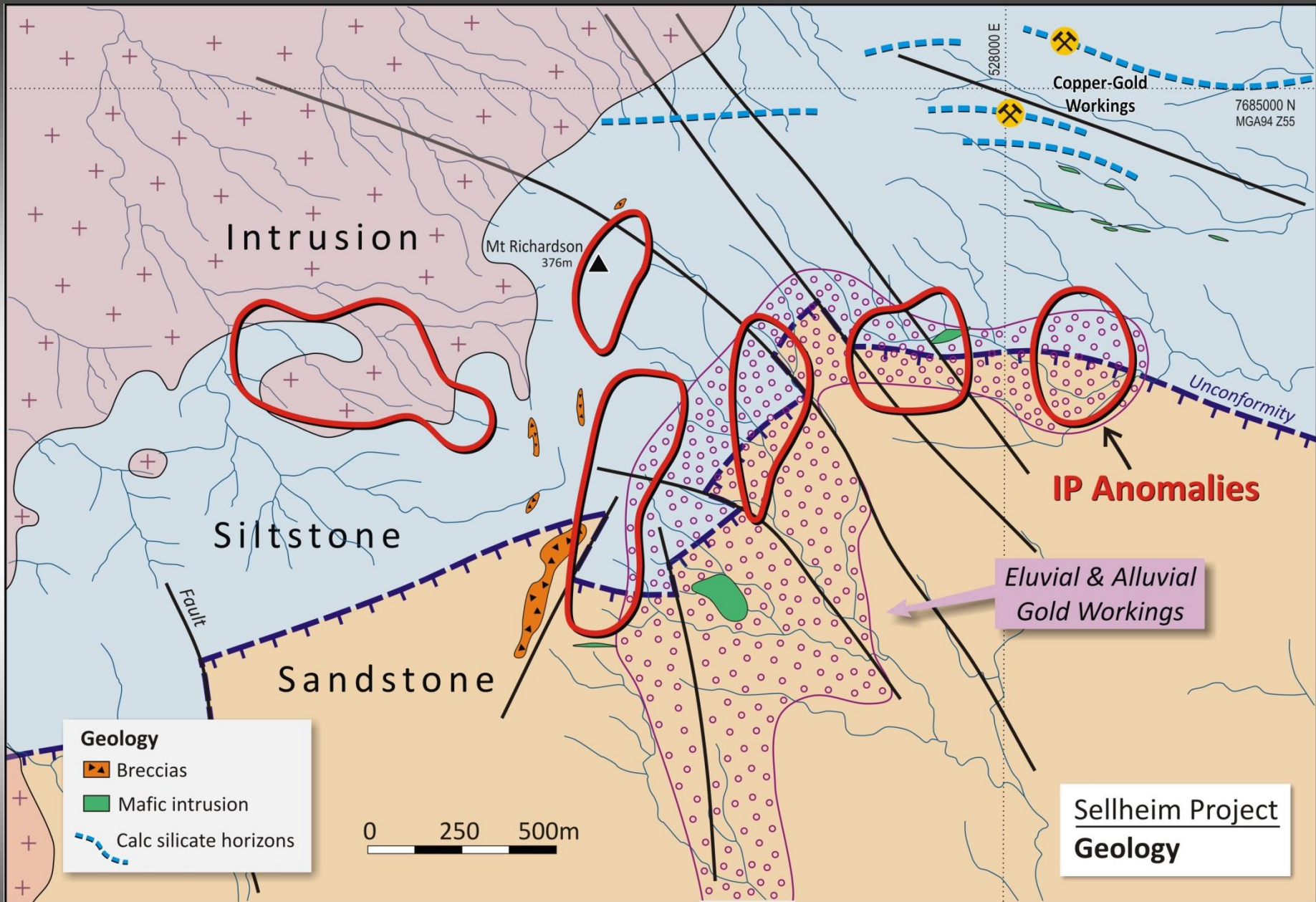








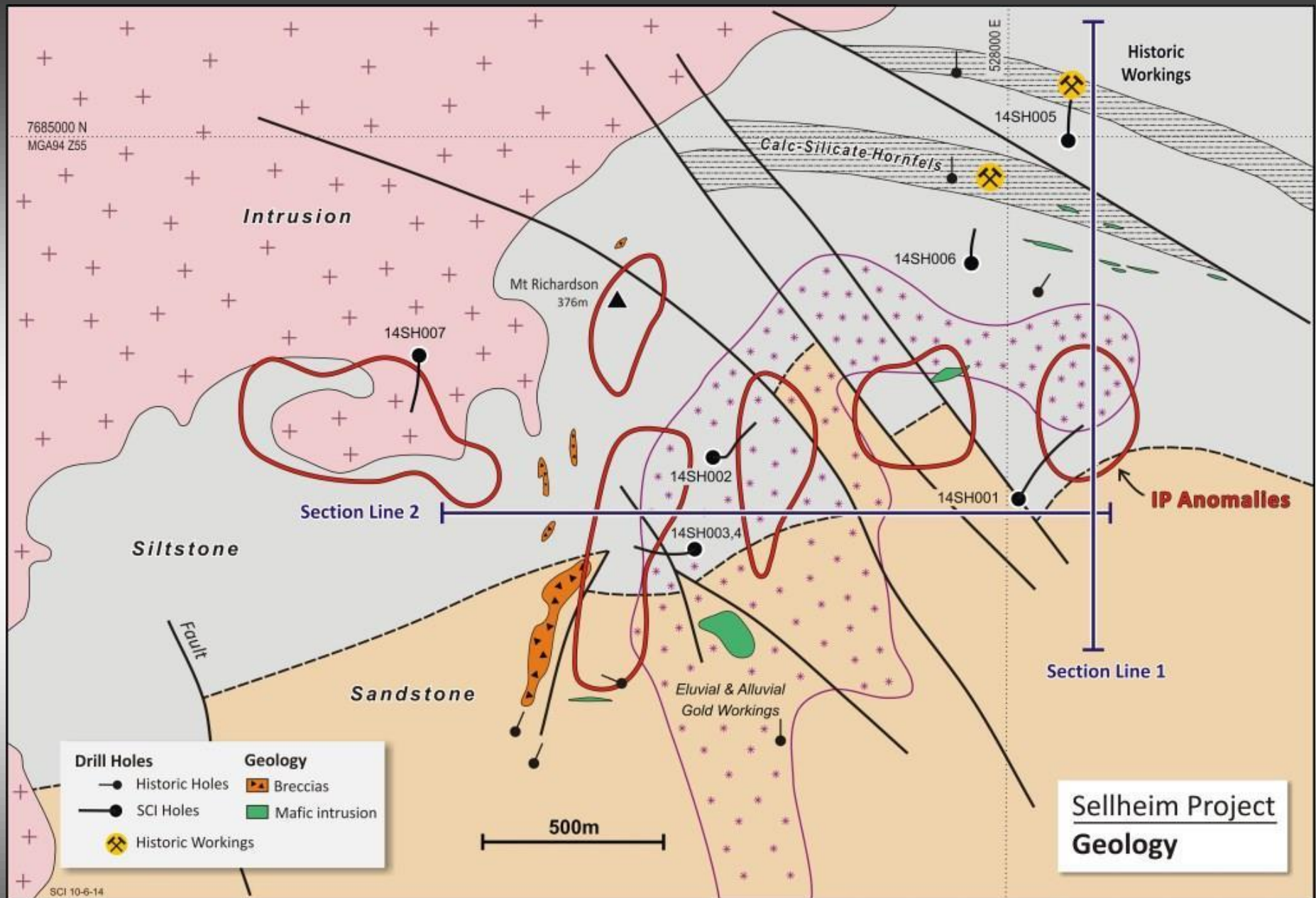






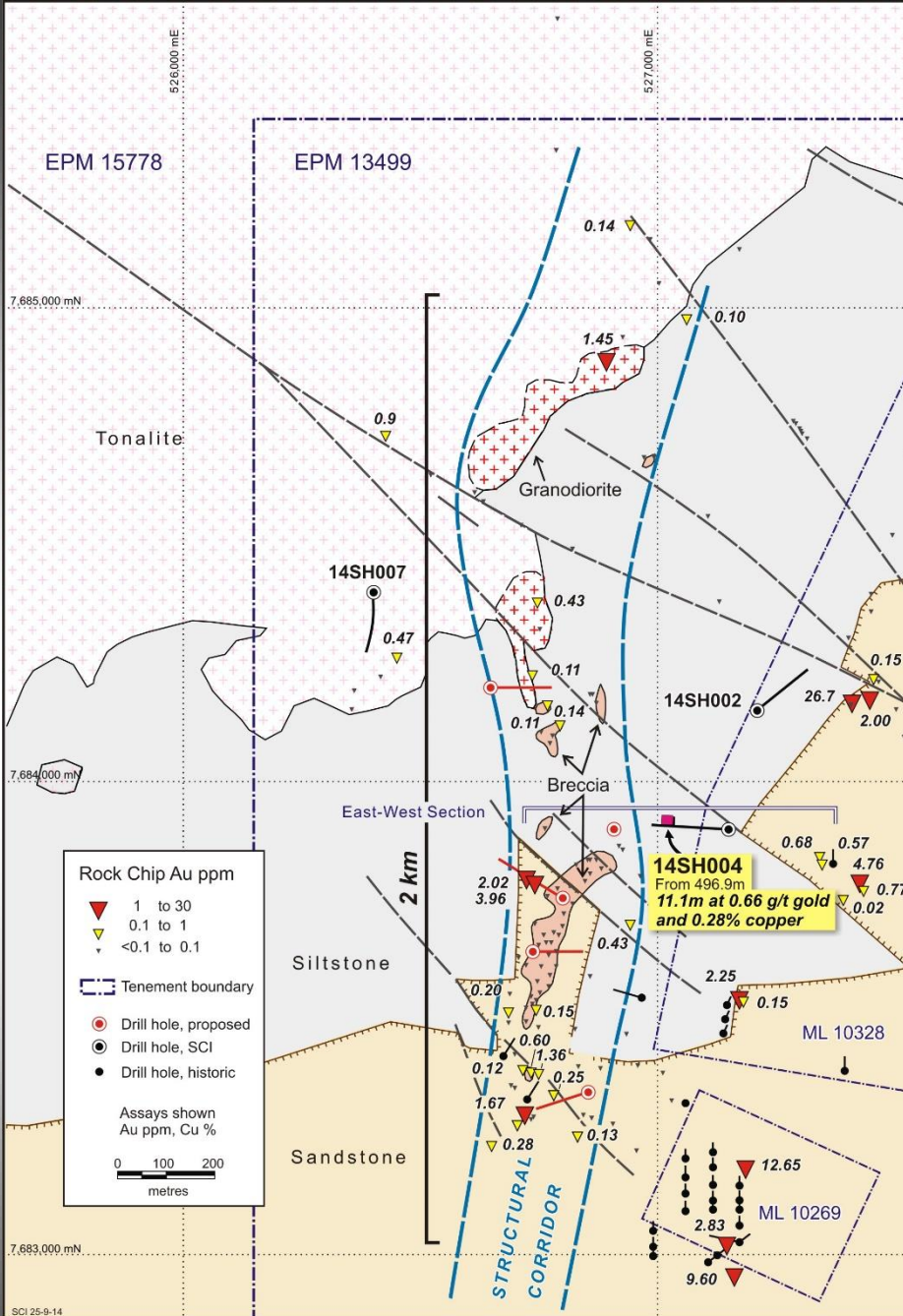




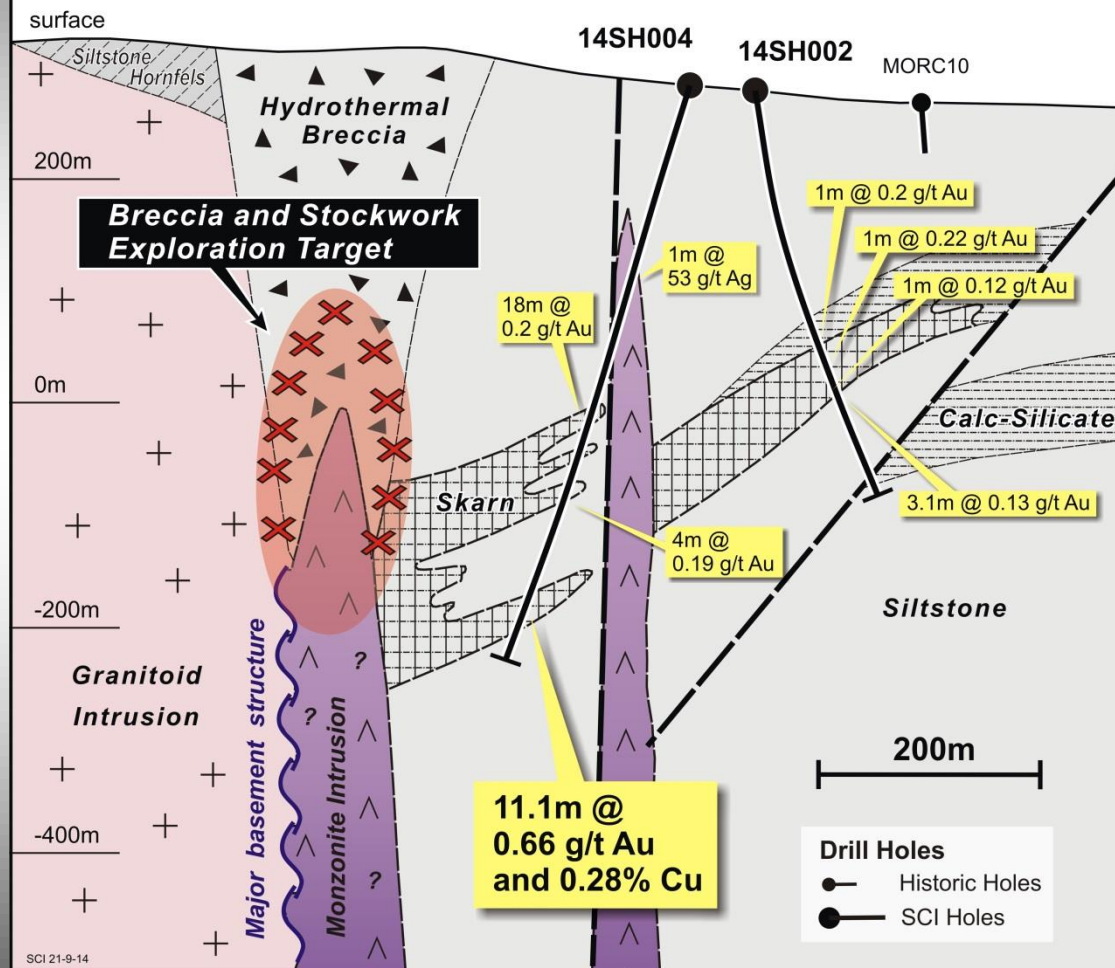


# SELLHEIM GEOLOGY

- Structural corridor mineralised over 2km
- Breccia complex and copper-gold bearing intrusion.
- Copper and gold in magnetite skarn in hole 14SH004
- High grade gold in peripheral veins

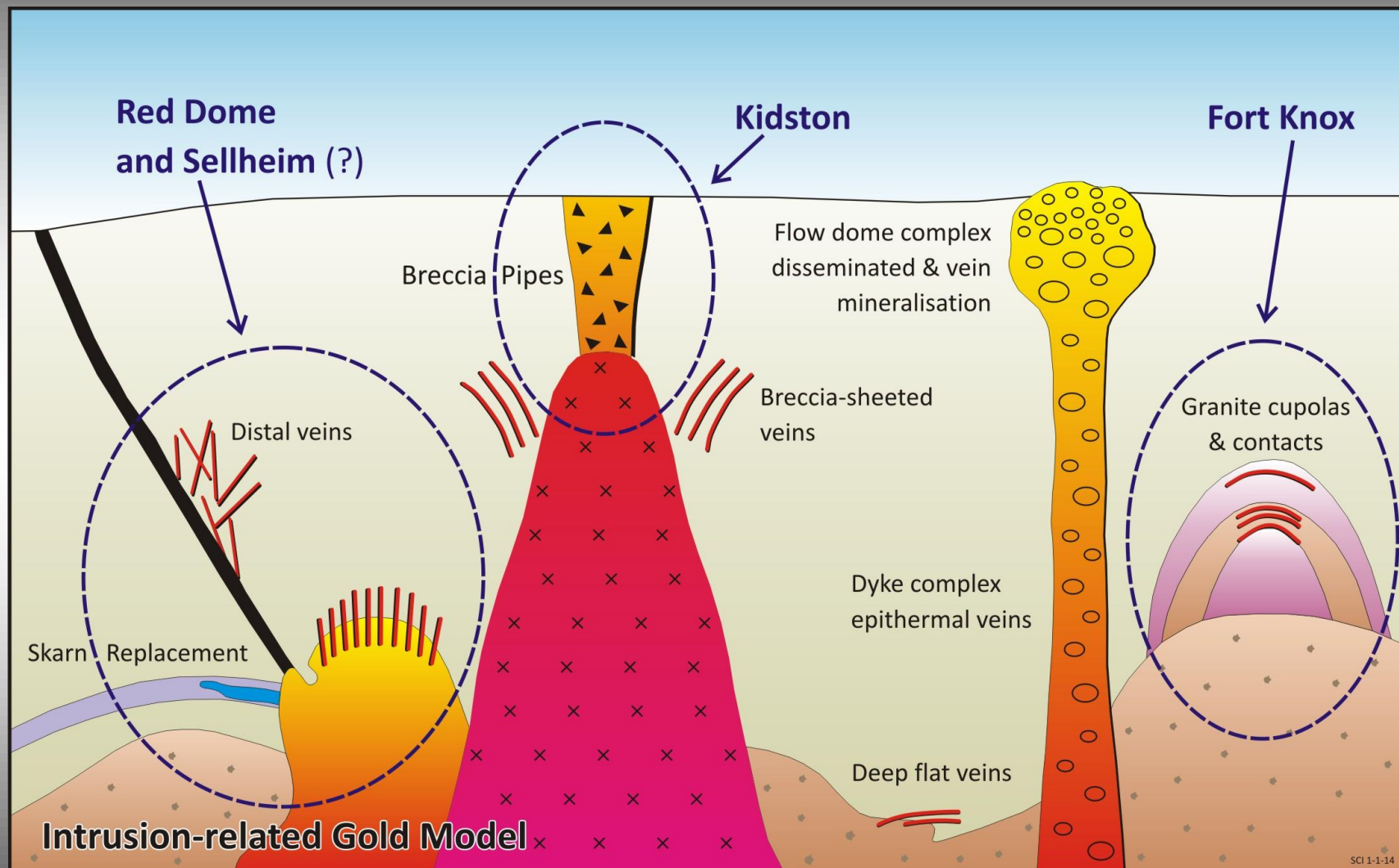


# Sellheim East - West Section





# INTRUSION-RELATED GOLD MODEL





# INTRUSION RELATED GOLD DEPOSITS

## **Alaska**

- Donlin Creek – 23 million ozs gold (10th largest global Au deposit)
- Livengood – 20.6 million ozs gold (31st largest)
- Pogo – 4.8 million ozs gold
- Fort Knox – 4.1 million ozs gold

## **Yukon**

- Dublin Gulch – 3 million ozs gold
- Red Mountain – 2 million ozs gold
- Brewery Creek – 1.2 million ozs gold

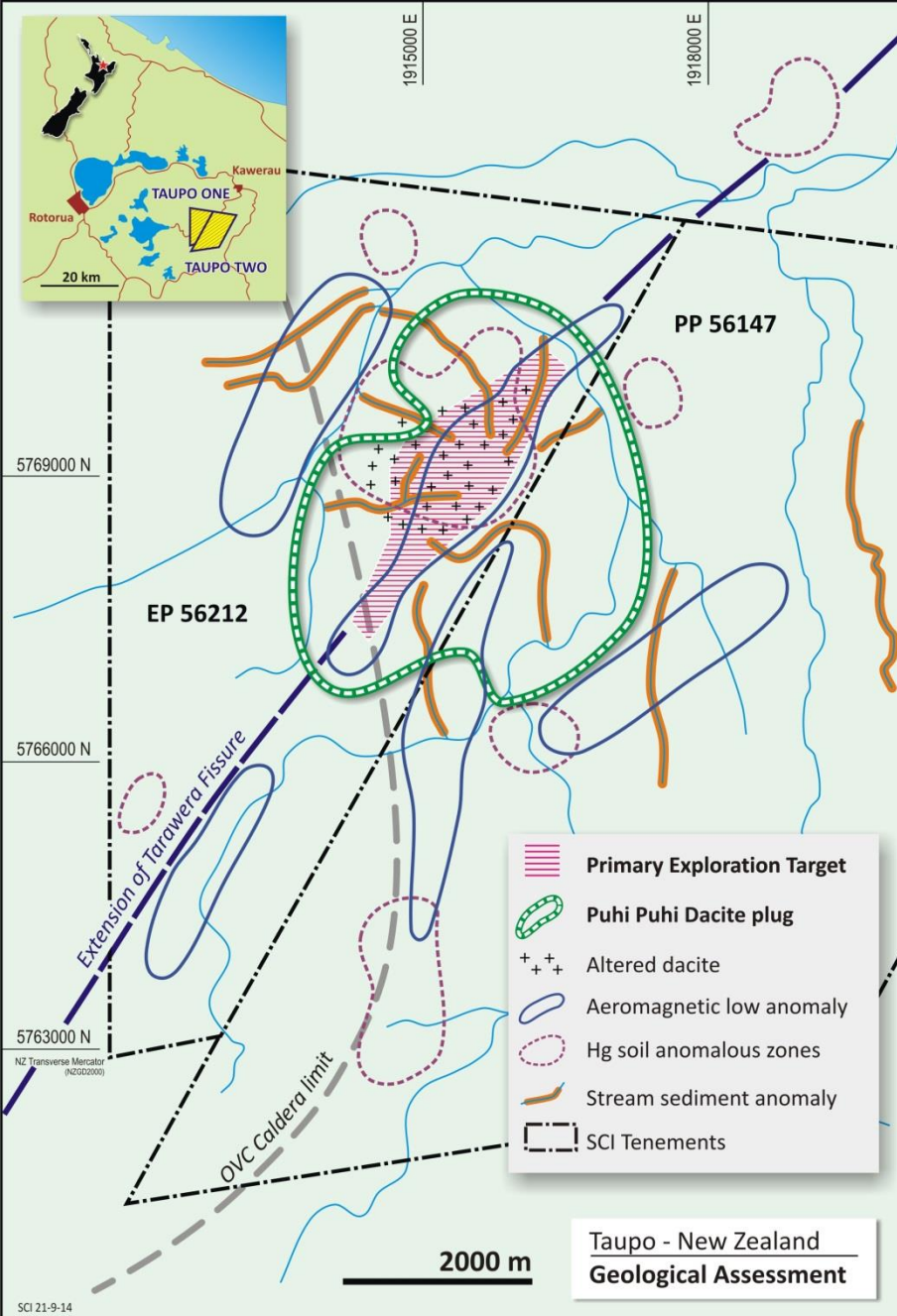
## **Queensland**

- Kidston – 5 million ozs gold
- Mt Leyshon – 3.2 million ozs gold
- Red Dome – 1.3 million ozs gold

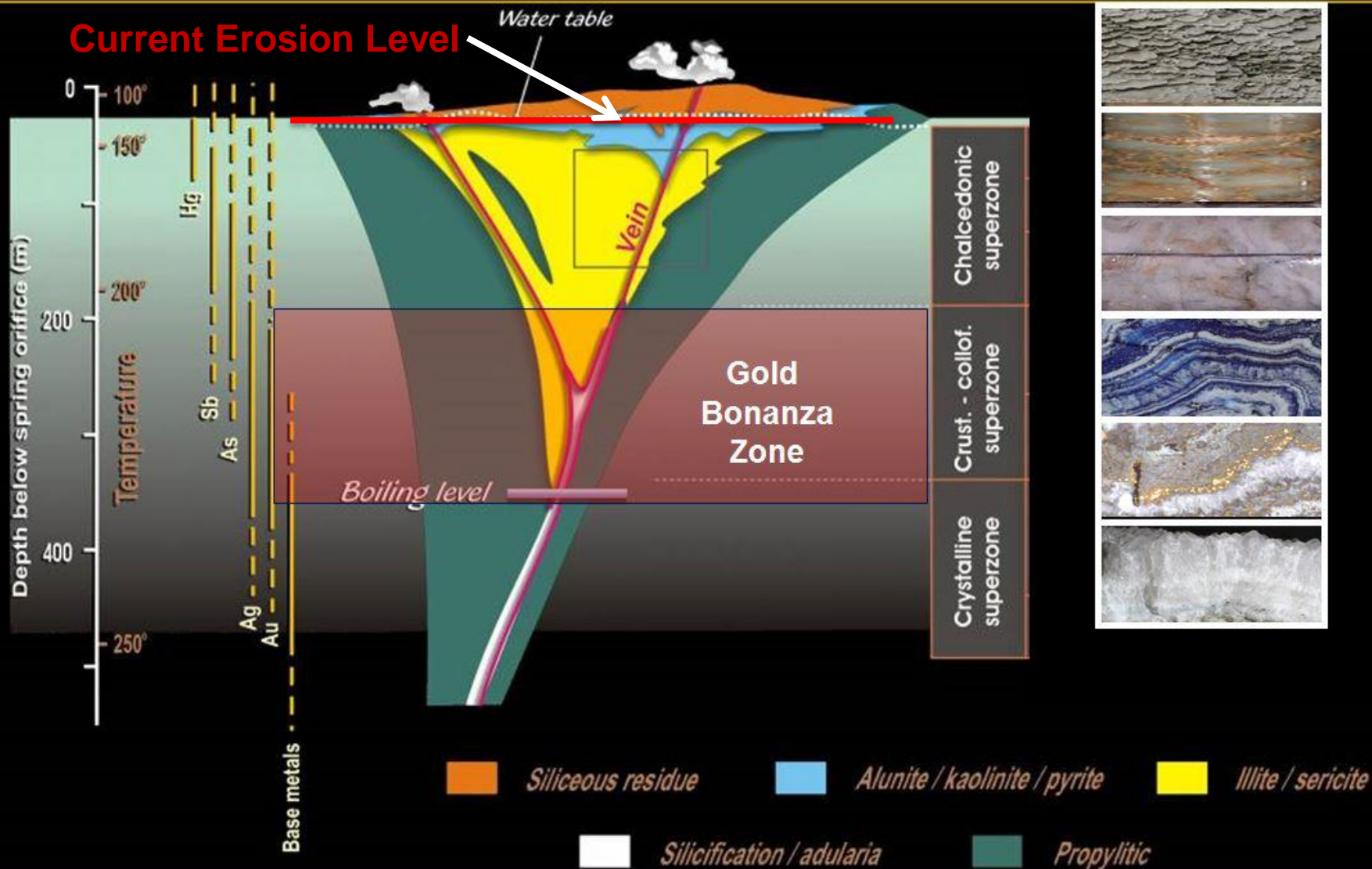
*Sources: Baker et al. Economic Geology 2006; Thompson et al. Min Deposita 1999; SEG News Oct 12; websites of International Tower Hill Mines; Golden Predator; Victoria Gold; Resolute Mining.*

# TAUPO PROJECTS

- Competent host rock
- Restricted target area
- Historic gold discovery
- Gold in stream samples
- Anomalous soil geochemistry
- High-level advanced argillic alteration
- Hauraki Goldfield to north produced **11Moz gold and 53Moz silver to 2006.**

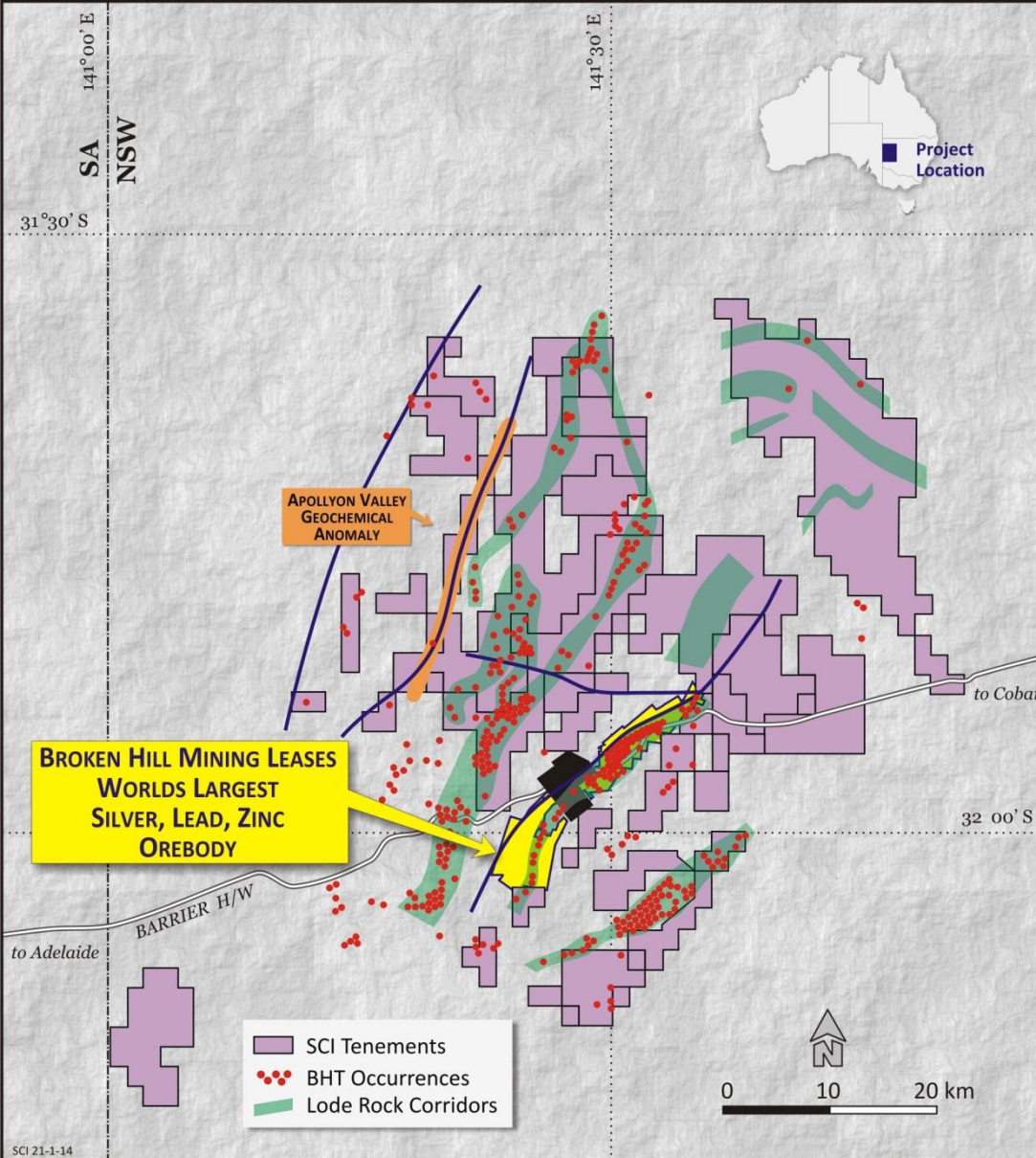


# Current Erosion Level





# TENEMENTS BROKEN HILL

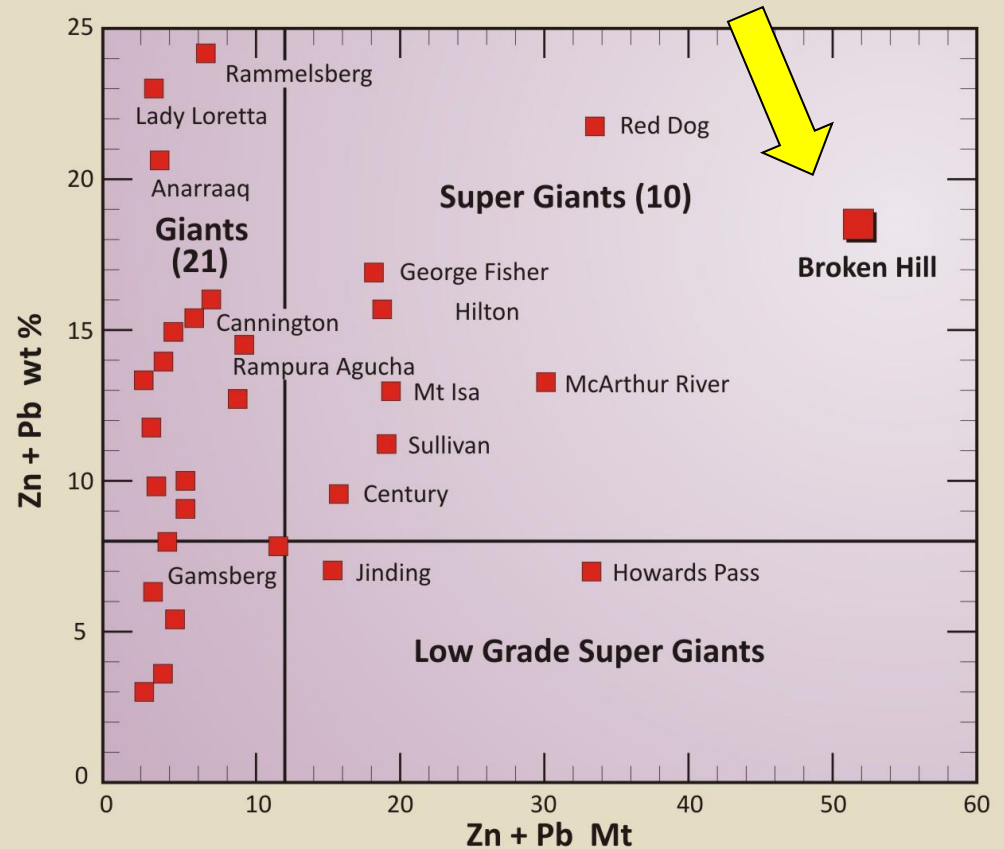


- Strong tenure position
- Belt of prospective rocks and major mineralised structures throughout the tenure
- Greater than 100km of strike of “LODE ROCKS”
- 50% lie under shallow cover



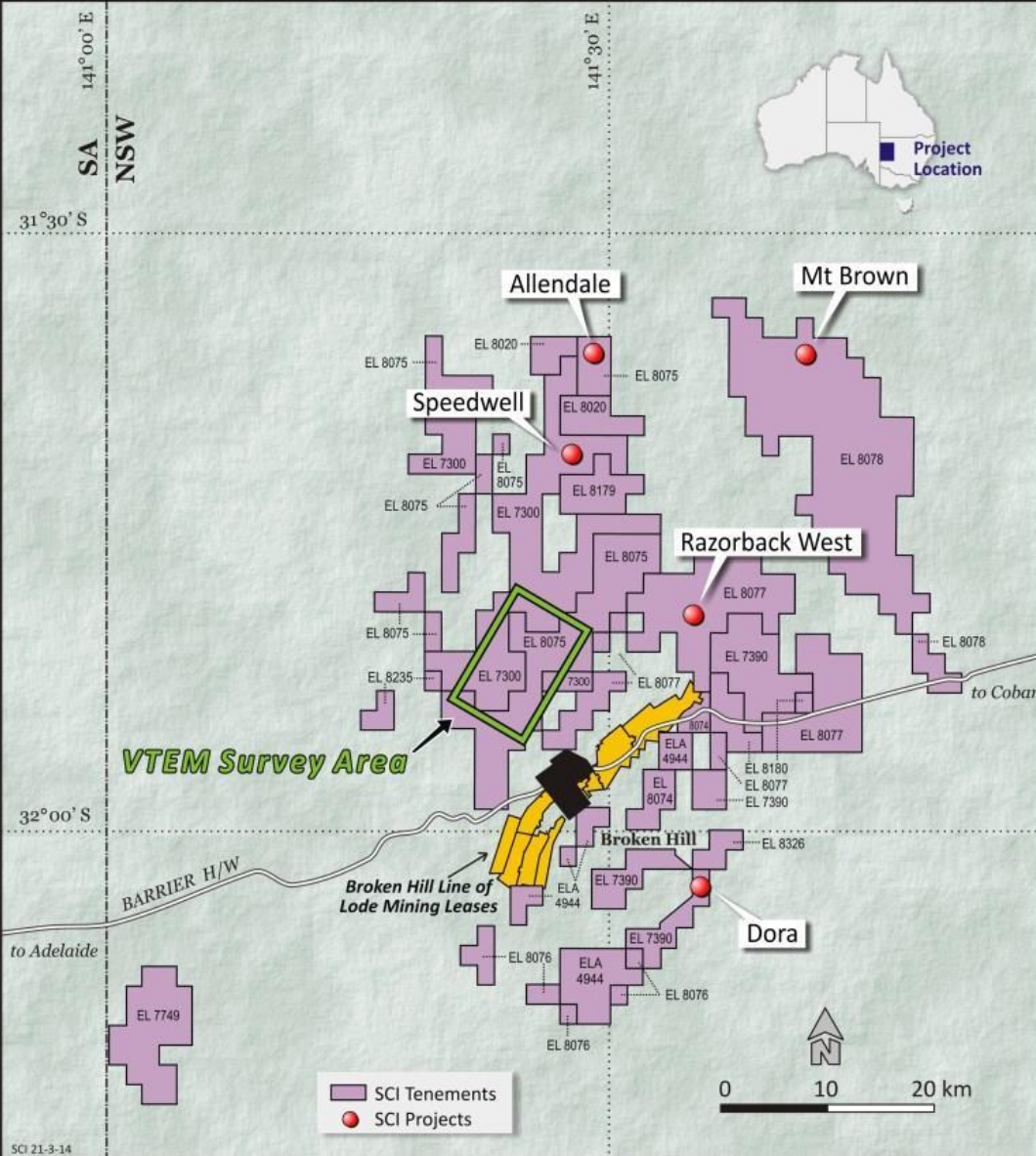
# BROKEN HILL

## + 1 Billion ounces Silver



ref: Large et al 2002

Stratiform Sediment Hosted Zn-Pb-Ag Deposits

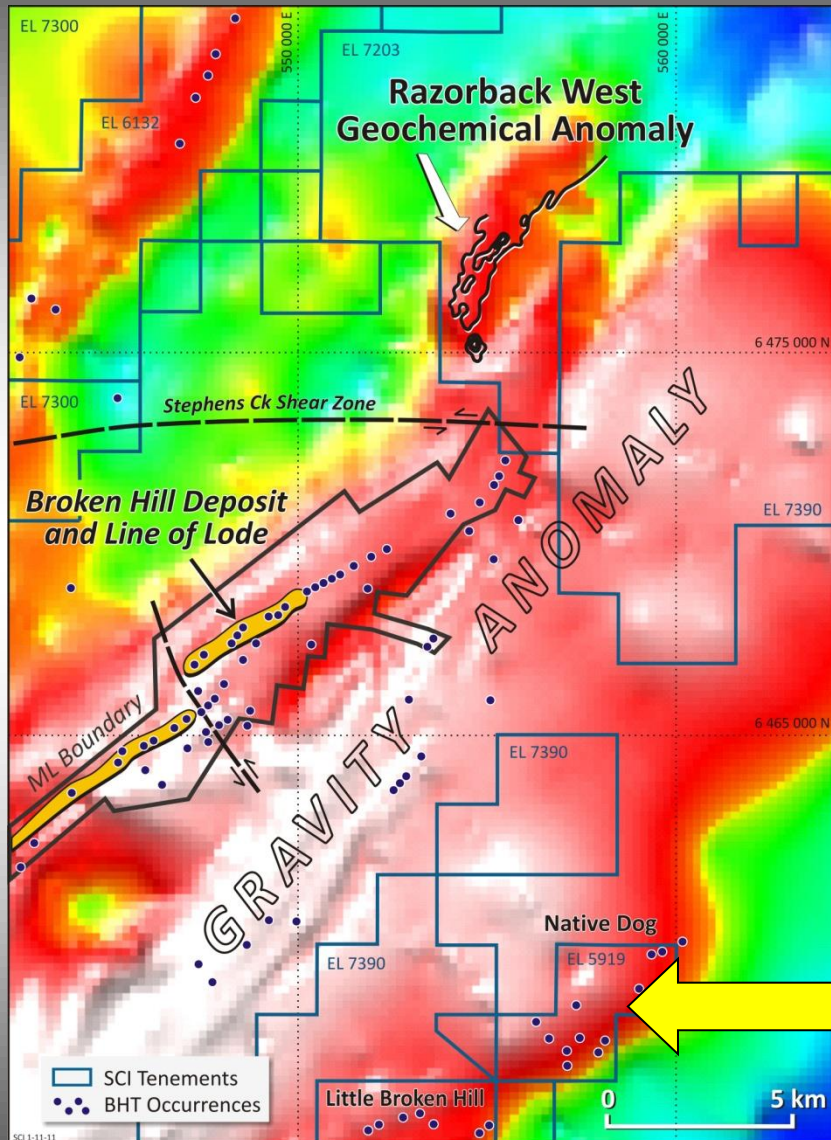


# Area of Focus

- **18 VTEM targets**  
Each requires systematic ground follow-up. Rock chip and soil geochem, fixed loop ground EM.
- **Razorback West**  
Large coincident geochemical, IP and gravity anomalies
- **Speedwell**  
Large coincident geochemical and IP anomaly with quartz-gahnite gossans
- **Allendale**  
Multiple sulphide-rich intersections with Zn-Pb-Ag
- **Mount Brown**  
Broad low grade Pb-Zn intersections
- **Dora**  
EM anomaly coincident with fold nose, lode rocks and old workings



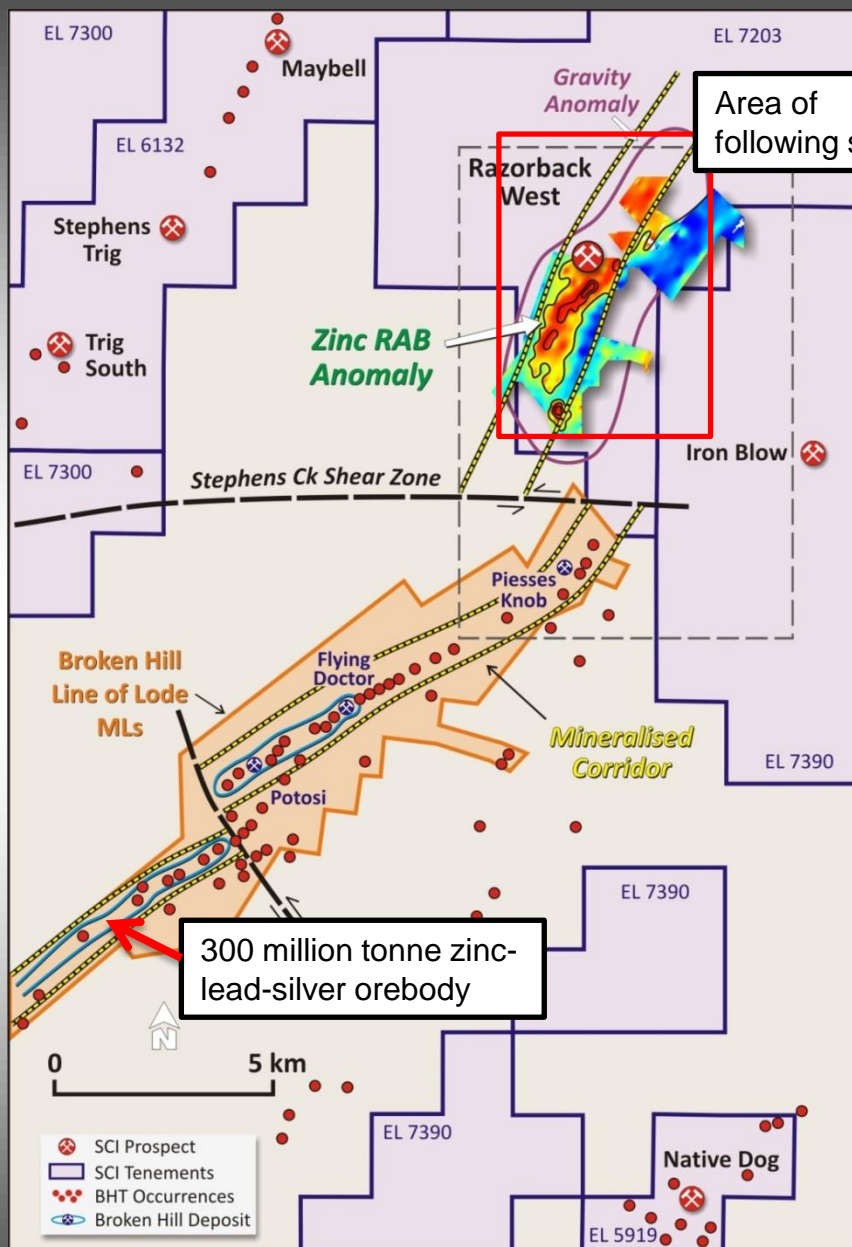
# Razorback West



- Broken Hill dominated by large gravity anomaly
- Broken Hill deposit located on western edge
- Little Broken Hill/Native Dog located on eastern edge

➤ ***Razorback West (under cover) located also on western edge, fault offset***

**NATIVE DOG**



# RAZORBACK WEST

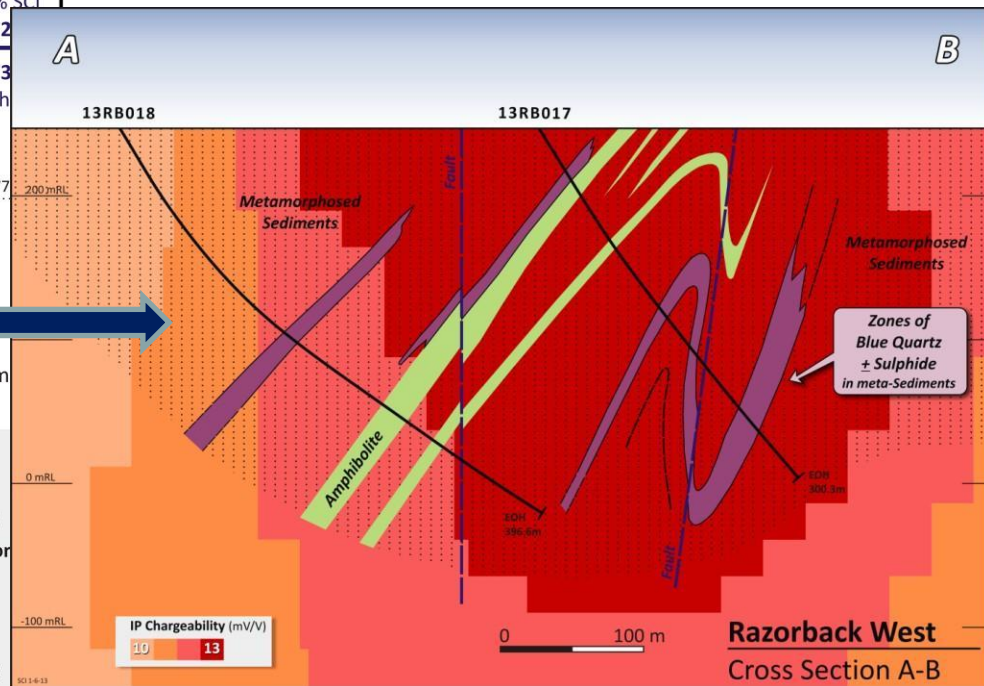
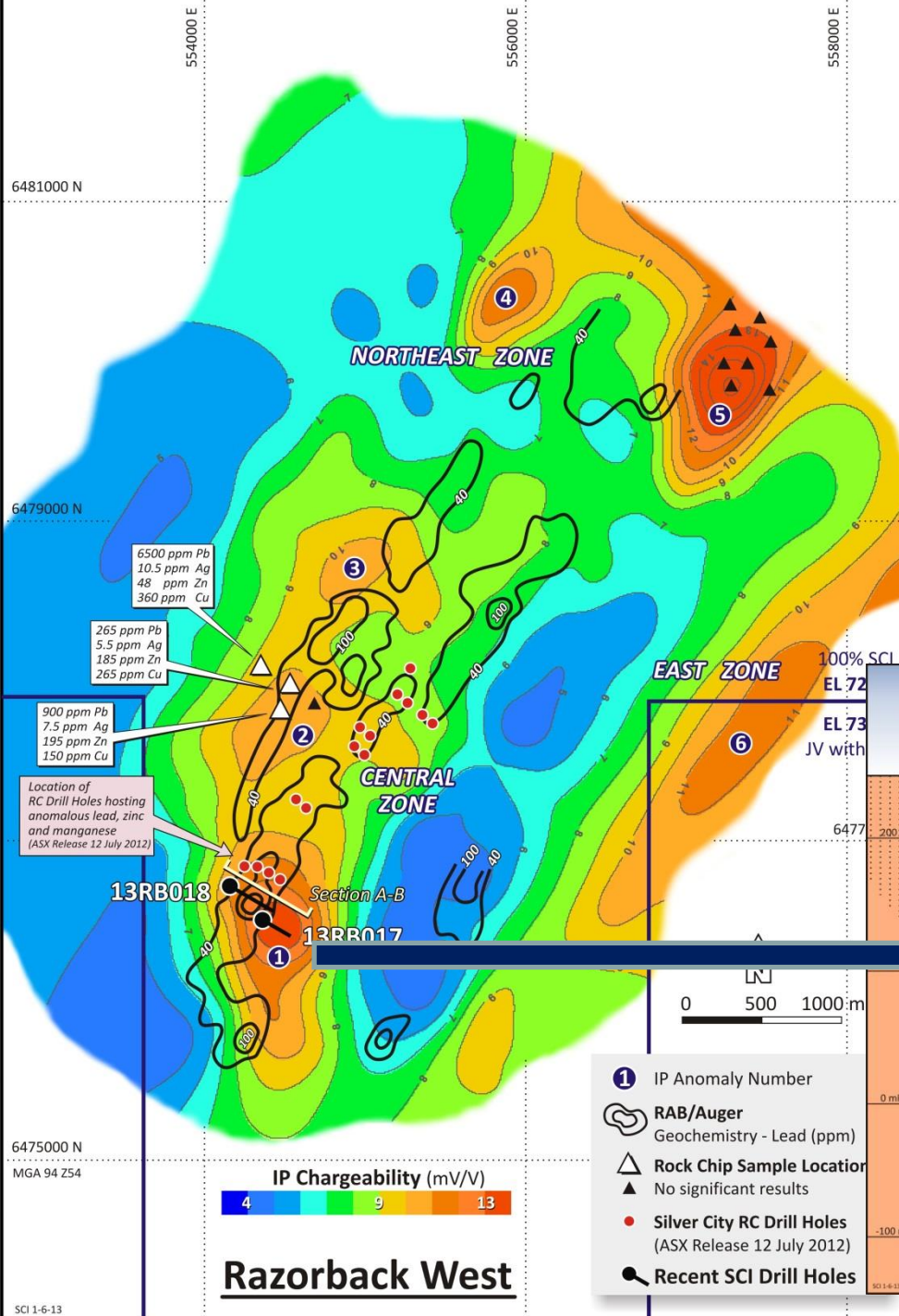
- Potential northern extension of Broken Hill Line of Lode. Offset along Stephens Creek Shear Zone
- 5 kilometre zone of coincident RAB geochemistry (Zn-Pb-Mn), gravity anomaly and IP chargeability anomaly
- 90% of anomaly under thin cover (no outcrop)
- Preliminary drilling has located lode rock sequences with veinlet and disseminated zinc and lead sulphides

**TARGET A LARGE BROKEN HILL  
TYPE DEPOSIT UNDER COVER  
GEOPHYSICAL SURVEYS PLANNED**



# RAZORBACK WEST

- Large coincident Gravity, Induced Polarisation and Geochemical Anomalies
- Right rock sequence with disseminated sulphides; highly prospective
- Ground EM or VTEM scheduled over anomalous zone.
- Detailed ground gravity



# SILVER CITY NEXT SIX MONTHS

**SELLHEIM QUEENSLAND: High grade gold target.**

- **Drilling: Follow-up magnetite skarn intersection of 11.1m at 0.66 g/t gold and 0.28% copper. Program of five holes commenced this week.**
- Regional geological mapping and reconnaissance geochemistry

**TAUPO NEW ZEALAND: High grade gold-silver target**

- Geological mapping
- Multi-element geochemical sampling

**BROKEN HILL: High grade silver-lead-zinc target**

- Evaluation of VTEM anomalies
- EM at Razorback
- RAB geochemistry

# SILVER CITY MINERALS

## **BROKEN HILL, NSW**

- LARGE FOCUSED LAND TENURE POSITION, FIRST EVER CONSOLIDATION OF TENURE AT BROKEN HILL
- WORLD CLASS MINING DISTRICT
- POTENTIAL FOR HIGH GRADE GIANT BASEMETAL AND SILVER-RICH OREBODIES

## **SELLHEIM, QUEENSLAND**

- UNIQUE EXPLORATION OPPORTUNITY IN GOLD DISTRICT
- GOLD SOURCE LIKELY TO BE INTRUSIONS AT DEPTH

## **TAUPO, NEW ZEALAND**

- FOCUSED TARGET
- POTENTIAL FOR HIGH GRADE EPITHERMAL GOLD-SILVER MINERALISATION

# SILVER CITY MINERALS LIMITED

ABN 68 130 933 309



**ASX Code: SCI**

Level 1, 80 Chandos Street  
St Leonards  
NSW 2065  
Australia  
+61 2 94371737

[www.silvercityminerals.com.au](http://www.silvercityminerals.com.au)