



# Bell Potter Unearthed Conference

**Presentation**  
11 February 2025

ASX: **MEK**  
[meekametals.com.au](https://meekametals.com.au)



# Important Information



## Disclaimer

This information contained in this presentation is issued by Meeka Metals Limited ("Meeka" or the "Company"). The information contained herein is confidential and proprietary to the Company and is provided to recipients on the terms and conditions set out in this disclaimer. The document, in whole or in part, is not to be distributed, copied or reproduced, in any form, without the prior written consent of the Directors of the Company. The document does not purport to cover all relevant information about the Company or its business. It does not intend to be a complete or accurate statement of material information. Although the Company has used care and diligence in its preparation, the presentation is provided on the basis that no representation or warranty, expressed or implied, is made by the Company or any of its associates or advisers as to the accuracy or completeness of the information. None of the information contained in this presentation or any other written or oral communication transmitted or made available to the recipient or any of its associates or advisers is, or shall be relied upon as, a promise or representation, whether as to the past or future, and no liability will attach to such information to the Company, its associates or advisers.

The Company and its directors, employees, agents and consultants shall have no liability including to any person by reason of negligence or negligent misstatement for statements, opinions, information or matters (express or implied) arising out of contained in or derived from or for any omissions from this presentation, except where liability under statute cannot be excluded.

Whilst the directors are confident in the ability of the Company to achieve its objectives, the proposed activities and the industry in which it operates are regarded as high-risk and therefore should be regarded as speculative. Potential shareholders should be aware of the risks involved with an investment of this nature. The value of the investment may rise or fall depending on a range of factors beyond the control of the Company, such as changes to interest rates, inflation, government policy, regulatory regimes and foreign exchange rates.

Certain statements in this report relate to the future, including forward looking statements relating to the Company's financial position, strategy and expected operating results. These forward-looking statements involve known and unknown risks, uncertainties, assumptions and other important factors that could cause the actual results, performance or achievements of the Company to be materially different from future results, performance or achievements expressed or implied by such statements. Actual events or results may differ materially from the events or results expressed or implied in any forward-looking statement and deviations are both normal and to be expected. Other than required by law, neither the Company, their officers nor any other person gives any representation, assurance or guarantee that the occurrence of the events expressed or implied in any forward-looking statements will actually occur. You are cautioned not to place undue reliance on those statements.

## Not Investment Advice

This presentation does not provide investment advice or financial product advice. Each recipient of this presentation should make its own enquiries and investigations regarding all information in this presentation including, but not limited to, the assumptions, uncertainties and contingencies which may affect future operations of the Company and the impact that different future outcomes might have on the Company. Information in this presentation is not intended to be relied upon as advice to investors or potential investors and has been prepared without taking account of any person's individual investment objectives, financial situation or particular needs. Before making an investment decision, prospective investors should consider the appropriateness of the information having regard to their own investment objectives, financial situation and needs and seek legal, accounting and taxation advice appropriate to their jurisdiction. The Company is not licensed to provide financial product advice in respect of its securities.

## Competent Person's Statement

The information that relates to Exploration Results as those terms are defined in the 2012 Edition of the 'Australasian Code for Reporting of Exploration Results, Mineral Resources and Ore Reserves', is based on information reviewed by Mr James Lawrence, a Competent Person who is a member of the Australasian Institute of Mining and Metallurgy. Mr Lawrence is a full-time employee of the Company. Mr Lawrence has sufficient experience that is relevant to the style of mineralisation and type of deposit under consideration and to the activity being undertaken to qualify as a Competent Person as defined in the 2012 Edition of the 'Australasian Code for Reporting of Exploration Results, Mineral Resources and Ore Reserves'. Mr

Lawrence consents to the inclusion in the report of the matters based on his information in the form and context in which it appears.

## Mineral Resources

The information that relates to the Mineral Resource for Turnberry was first reported by the Company on 6 May 2024. The information that relates to the Mineral Resource for St Anne's was first reported by the Company on 17 April 2024. The information that relates to the Mineral Resource for Andy Well was first reported by the Company on 21 December 2020. The Company is not aware of any new information or data that materially affects the information included in these announcements and that all material assumptions and technical parameters underpinning the estimates continue to apply and have not materially changed. The Company confirms that the form and context in which the Competent Person's findings are presented have not been materially modified from the original announcement.

## Ore Reserves, Production Targets and Forecast Financial Information

The information that relates to Ore Reserves, production targets and forecast financial information for the Murchison Gold Project was first reported by the Company on 12 December 2024. The Company is not aware of any new information or data that materially affects the information included in this announcement and that all material assumptions and technical parameters underpinning the estimates continue to apply and have not materially changed. The Company confirms that the form and context in which the Competent Person's findings are presented have not been materially modified from the original announcement.

## Currency

All amounts are in Australian dollars unless stated otherwise.

## Not an offer in the United States

This presentation has been prepared for publication in Australia and may not be released to US wire services or distributed in the United States. This presentation does not constitute an offer to sell, or a solicitation of an offer to buy, securities in the United States or any other jurisdiction. Any securities described in this presentation have not been, and will not be, registered under the US Securities Act of 1933 and may not be offered or sold in the United States except in transactions exempt from, or not subject to, registration under the US Securities Act and applicable US state securities laws.

The distribution of this presentation in jurisdictions outside Australia may be restricted by law. Persons who come into possession of this presentation should observe any such restrictions. Any failure to comply with such restrictions may constitute a violation of law. Please refer to the international offer restrictions section of this presentation.

## JORC Code

It is a requirement of the ASX Listing Rules that the reporting of ore reserves and mineral resources in Australia comply with the Joint Ore Reserves Committee's Australasian Code for Reporting of Mineral Resources and Ore Reserves ("JORC Code"). Investors outside Australia should note that while ore reserve and mineral resource estimates of the Company in this document comply with the JORC Code (such JORC Code-compliant ore reserves and mineral resources being "Ore Reserves" and "Mineral Resources" respectively), they may not comply with the relevant guidelines in other countries and, in particular, do not comply with (i) National Instrument 43-101 (Standards of Disclosure for Mineral Projects) of the Canadian Securities Administrators (the "Canadian NI 43-101 Standards"); or (ii) Item 1300 of Regulation S-K, which governs disclosures of mineral reserves in registration statements filed with the SEC. Information contained in this document describing mineral deposits may not be comparable to similar information made public by companies subject to the reporting and disclosure requirements of Canadian or US securities laws.

# 10-year Production Plan Delivers \$1B FCF



Pre-eminent mining jurisdiction – Western Australia.



FS2.0 – 10-year production plan up to 76koz pa, **average 65koz pa for first 7 years.**



**Undiscounted pre-tax free cash flow \$1B,** NPV<sub>8%</sub> \$616M, IRR 180% (@\$4,100/oz).



Site activity ramping up, open pit mining commencing 1 March 2025, mill commissioning in June 2025.

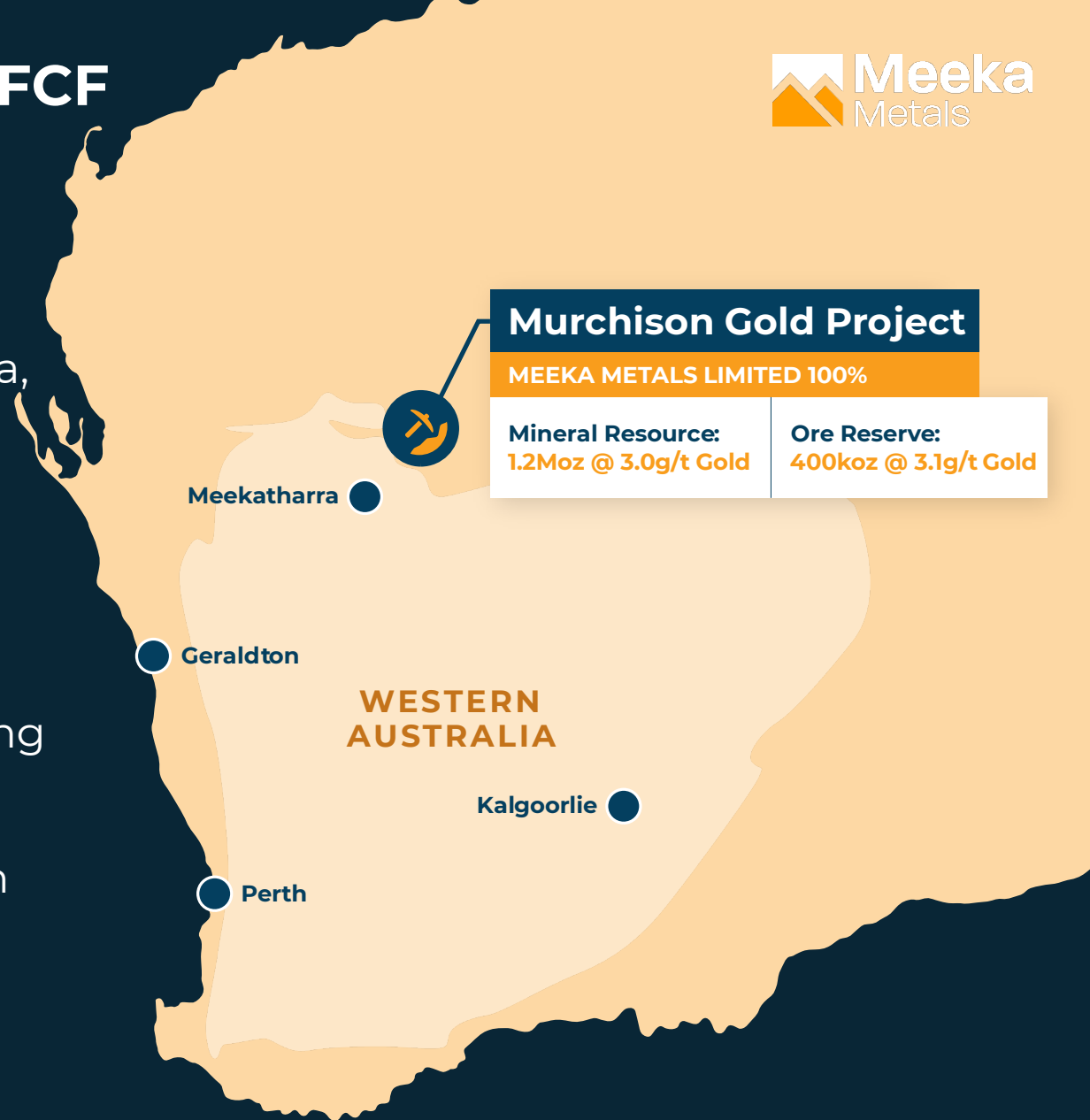


**Zero debt, no hedging** and **fully funded** with pro-forma \$55M cash<sup>1</sup>.



**First gold** targeted for **mid-2025.**

<sup>1</sup>Cash position 31 December 2024.



# Capital Structure



**\$0.115**

share price  
(7 February 2025)

**2,493m**

shares

**\$287m**

market cap

**55m**

options

**\$55m**

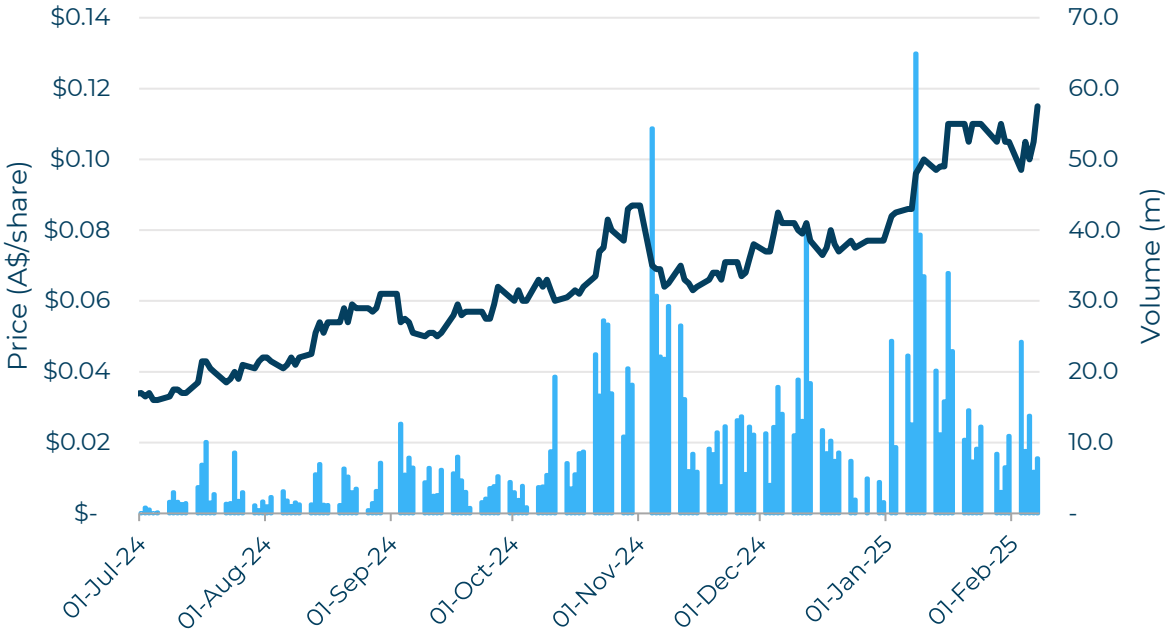
cash  
(31 December 2024)

**nil**

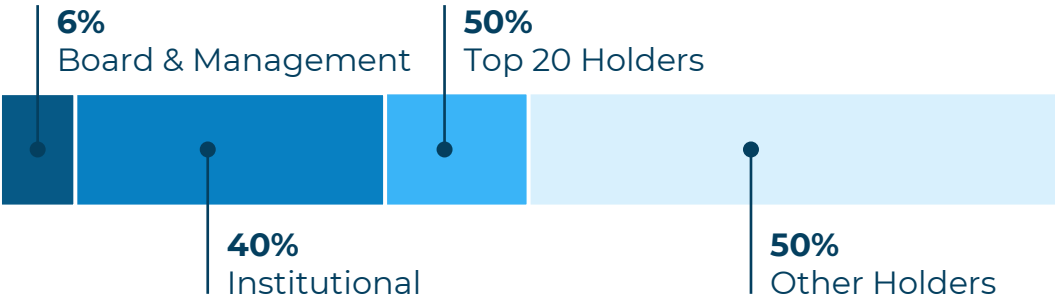
debt

**\$232m**

enterprise value



## Ownership (January 2025)





# Leadership

Have invested \$3.5m in the Company to date.



## Board



**Paul Chapman**  
**Non-Executive Chairman**

**ACCOUNTANT**

Chartered accountant with >30 years in the resources sector. Ex-WMC, founder of **Silver Lake Resources** (+250kozpa gold producer, +\$1B mc).



**Tim Davidson**  
**Managing Director**

**MINING ENGINEER**

Previously mine manager for **Silver Lake Resources**. Ex-Newmont, BHP, WA and international experience.



**Roger Steinepreis**  
**Non-Executive Director**

**LAWYER**

Founder and Chairman of national law firm Steinepreis Paganin. Previously Director of Apollo Consolidated (discovery of the 1Moz Rebecca deposit) and taken over by Ramelius Resources.



**Paul Adams**  
**Non-Executive Director**

**GEOLOGIST**

Ex-Placer Dome and Dominion Mining then Head of Research at DJ Carmichael. Most recently Managing Director of Spectrum Metals (discovery of Penny West deposit) and taken over by Ramelius Resources.

## Management



**Chris Davidson - Chief Development Officer**

**MINING ENGINEER**

Mine manager for **Silver Lake Resources** responsible for developing their newest mine, Rothsay. Ex-Barrick, Gold Fields, Rio Tinto, WA and international experience.



**Tony Brazier - Chief Financial Officer**

**ACCOUNTANT**

Previously CFO and financial advisory roles at Ora Banda Mining, Strike Energy, Bass Metals Limited and Pilbara Minerals.



**Matthew O'Hara - General Manager Murchison**

**MINING ENGINEER**

Developed the Penny Gold Mine for Ramelius Resources, ex-General Manager at Sunrise Dam for Anglo Gold Ashanti, Mount Monger for **Silver Lake Resources** and Operations Manager at St Ives for Gold Fields.



**James Lawrence - Manager Geology**

**GEOLOGIST**

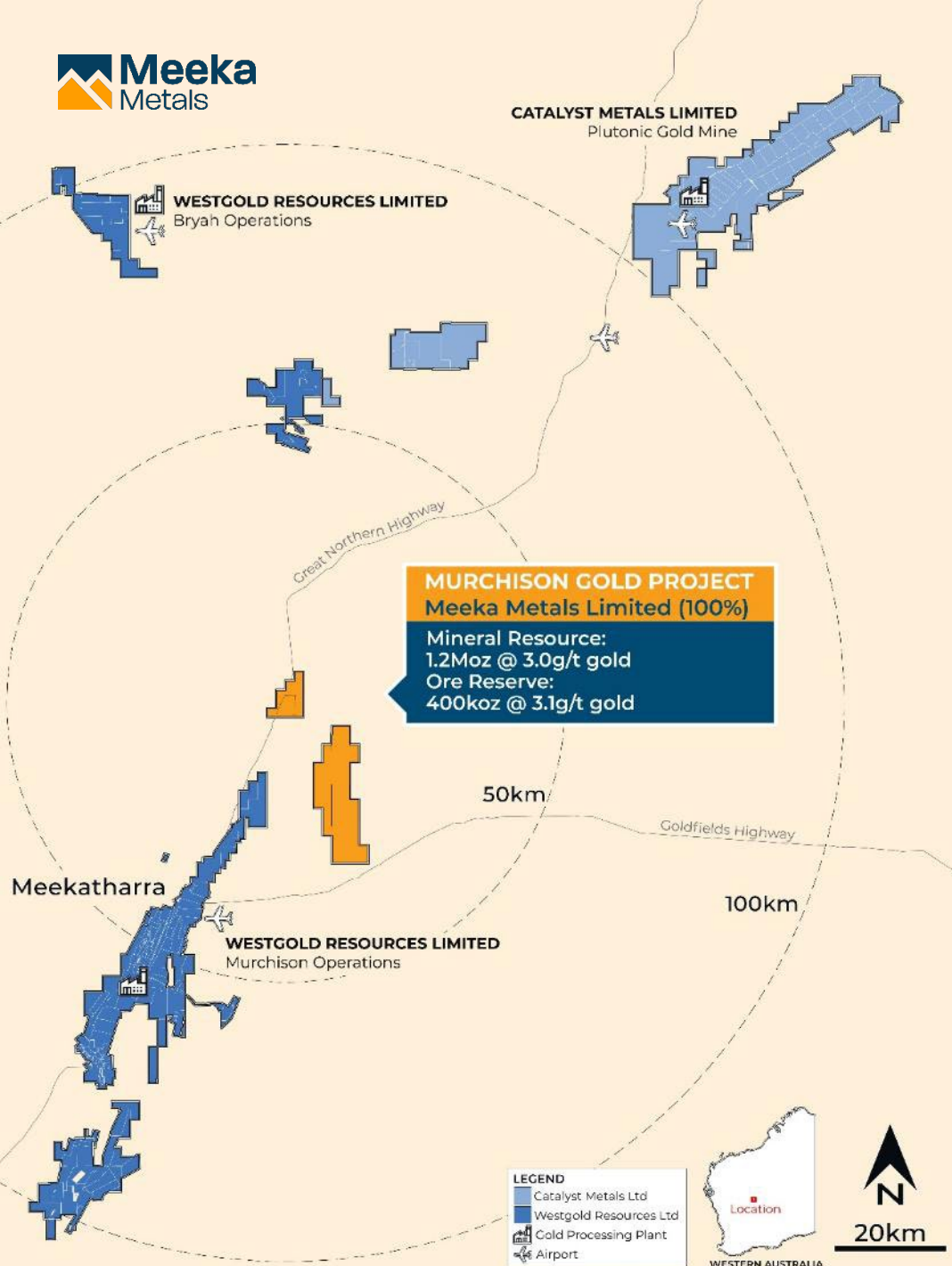
Previously geology manager at Red 5, responsible for mine geology and production at the large King of the Hills mine. Extensive WA goldfields experience.



**Alan Tandy - Manager Environment**

**ENVIRONMENTAL SCIENTIST**

Previously Environmental Manager and led the permitting process for Bellevue Gold's high-grade Bellevue mine.



# Murchison Gold Project Overview

## 100% MEK ownership in:

- ✓ 1.2Moz @ 3.0g/t Au Mineral Resource
- ✓ 400koz @ 3.1g/t Au Ore Reserve

## Extensive established site and regional infrastructure:

- ✓ Existing CIL processing plant (**replacement cost ~\$80M**)
- ✓ Sealed airstrip in Meekatharra (**saves ~\$15M capital**)
- ✓ Sealed highway access to the Project (**all weather access**)

## Installation of process and mining support infrastructure progressing to plan:

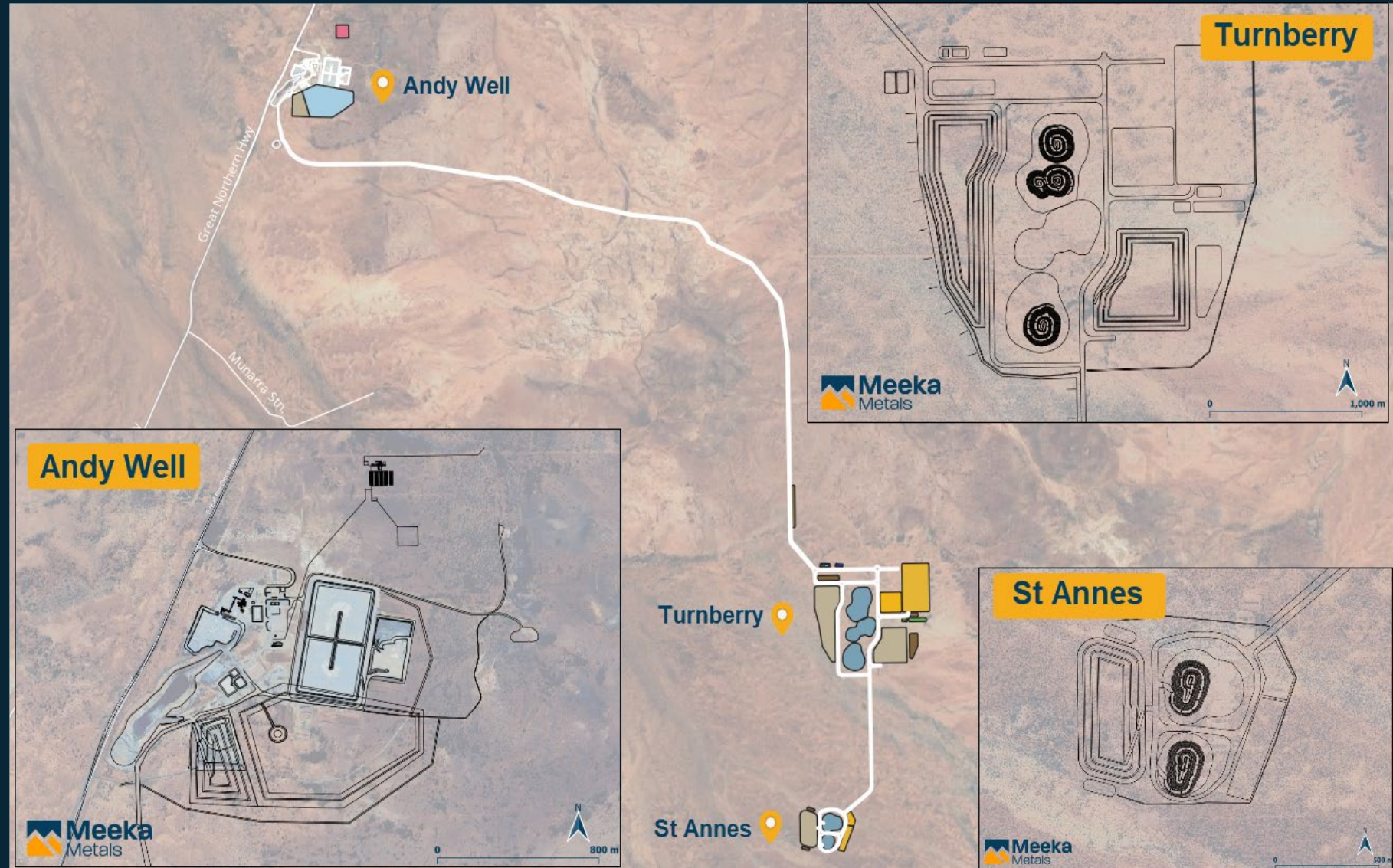
- ✓ 136-person accommodation village (**March 2025 Qtr**)
- ✓ 200-person underground change house (**March 2025 Qtr**)
- ✓ Administration complex for Andy Well (**March 2025 Qtr**)
- ✓ Administration complex for Turnberry (**March 2025 Qtr**)
- ✓ Fuel storage facilities (**complete**)



# Murchison Gold Project

## 10-year initial plan:

- New open pits at Turnberry and St Anne's
- Restart high-grade Andy Well underground mine
- New underground mine at Turnberry
- ✓ Road access via the Great Northern Highway.
- ✓ Existing processing plant currently being expanded.
- ✓ 20km haul road between Andy Well and Turnberry on a granted Miscellaneous Licence
- ✓ **Mining Lease and all operating permits in place**



# Strong Free Cash Flows

Exceptional financial outcomes driven by 40% growth in production.

- ✓ The Company has **no hedging in place** and retains full exposure to the gold price.
- ✓ Every \$100/oz increase in gold price, increases undiscounted pre-tax free cash flow by ~\$52M.

**@ \$4,100/oz (spot price)**

**\$1B**

Undiscounted free cash flow of \$1B pre-tax and \$721M post-tax

**\$418M**

NPV<sub>8%</sub> of \$616M pre-tax and \$444M post-tax

**180%**

IRR of 180% pre-tax and 160% post-tax

**@ \$3,500/oz (base case)**

**\$701M**

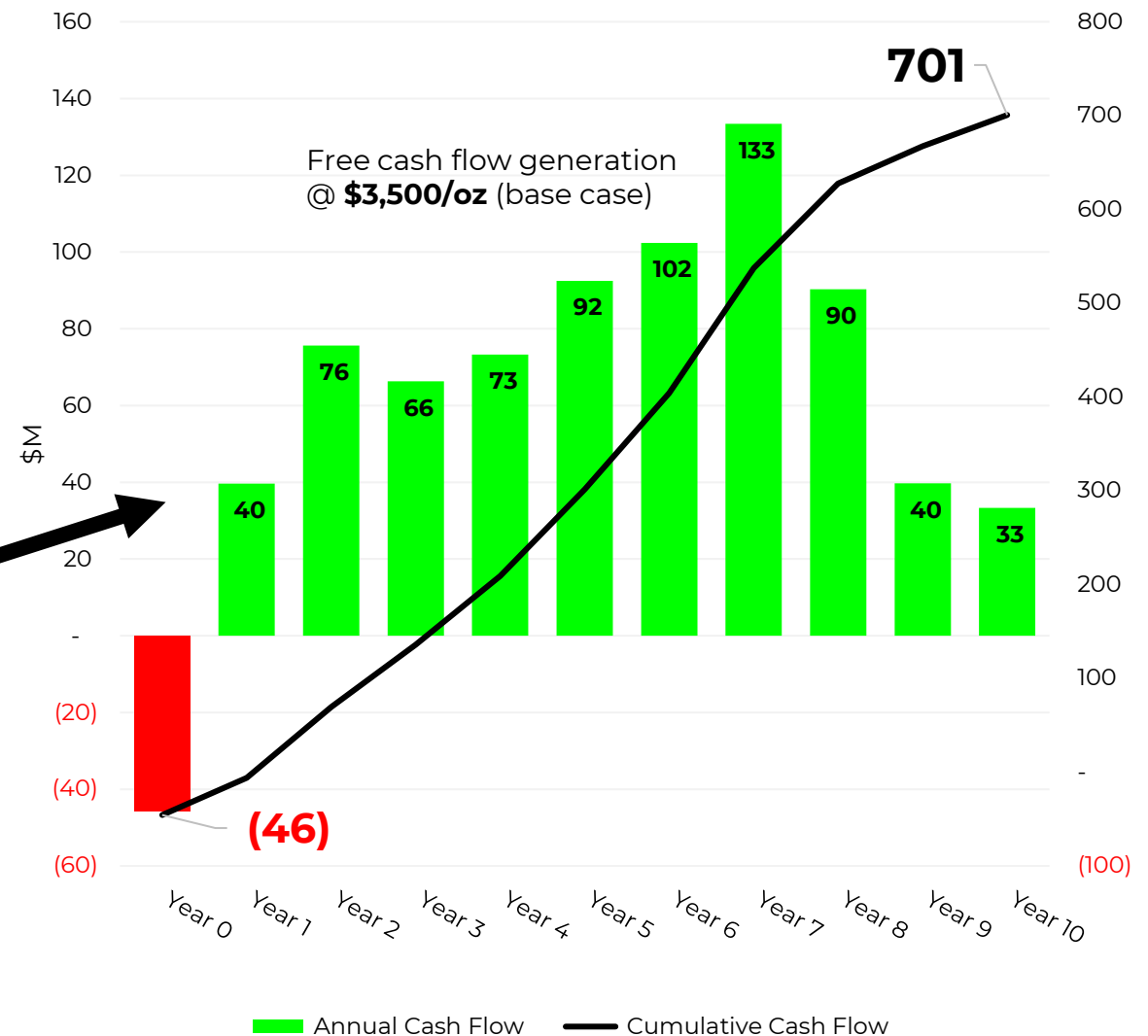
Undiscounted free cash flow of \$701M pre-tax and \$507M post-tax

**\$418M**

NPV<sub>8%</sub> of \$418M pre-tax and \$304M post-tax

**122%**

IRR of 122% pre-tax and 110% post-tax

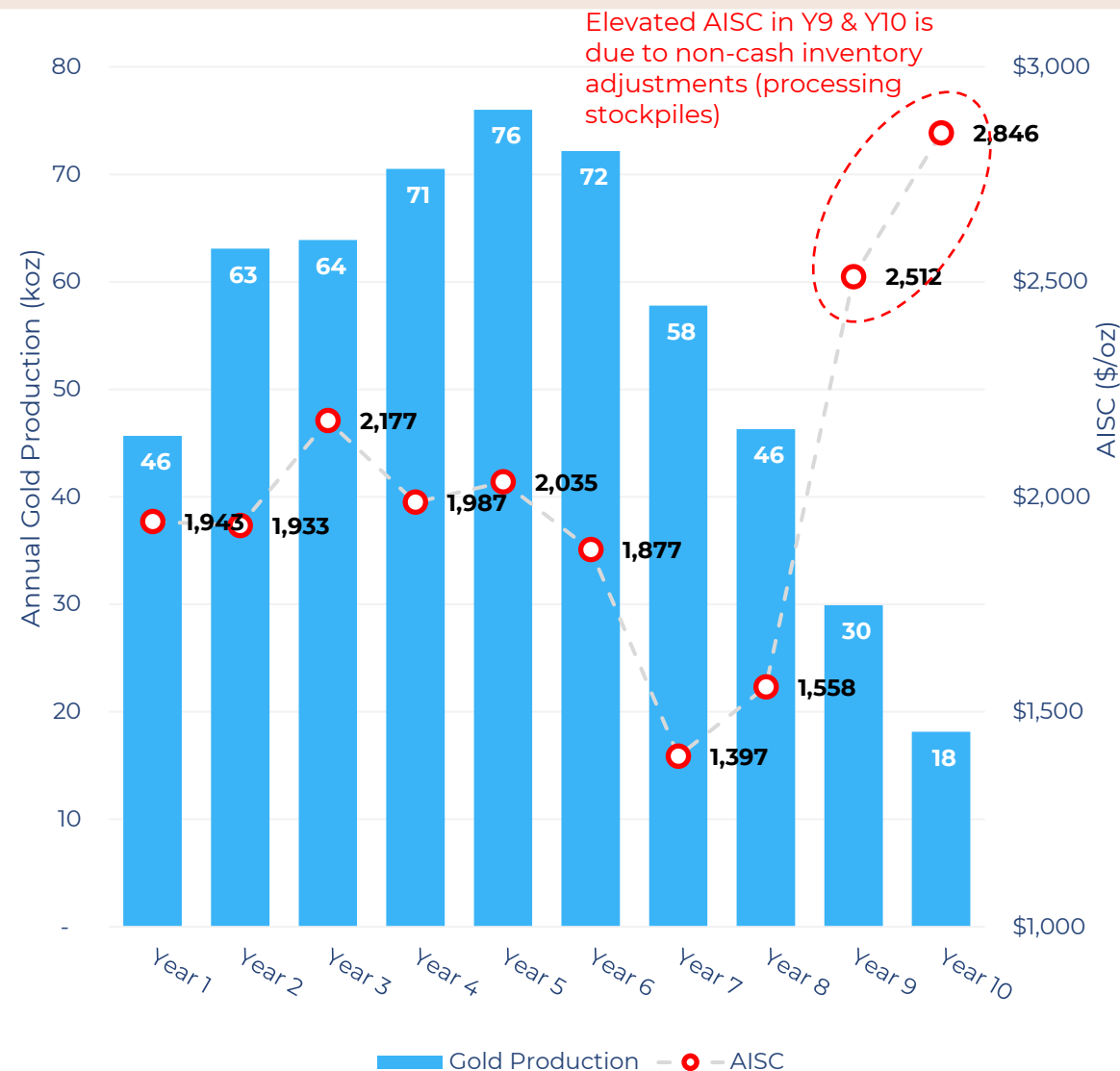




# Compelling Production and Cost Profile

65koz pa average annual gold sales over first 6 years at ~\$2,000/oz AISC.

- ✓ LOM average head grade of **3.0g/t Au**.
- ✓ Peak gold production of **76koz** in year 5.
- ✓ Average annual gold production of **65koz pa** over first 7 years.
- ✓ Total gold sales of **544koz**.
- ✓ ~\$2,000/oz AISC delivering a **107% AISC margin**<sup>1</sup>.



<sup>1</sup>AISC margin derived from gold price of \$4,100/oz consistent with the spot case assumption in the Murchison Gold Project Feasibility Study FS2.0.



# Expansion works on existing processing plant now well underway



Replace reclaim and mill feed conveyor

2x New 600m<sup>3</sup> tank

New 145m<sup>3</sup> tank

replace gravity circuit  
gold room fitout  
cyclone cluster  
cyanide tank

Replace secondary cone crusher

750kW Outokumpu ball (purchased July 2024) on site ready for installation October 2024.



Mining administration complex

Process administration

Workshop and stores

Foundations for new tanks

New ball mill foundation

New tank skins being fabricated



Powerhouse

Laboratory

Process administration

new cyanide storage tank

1x new 145m<sup>3</sup> CIL tank

Ball mill ready for installation

2x new 600m<sup>3</sup> CIL tanks

Workshop and stores

New ball mill foundation



**June 2024**  
Accommodation village location

136-person accommodation village





January 2025

Open pit mining area – 20km

Underground mine

Processing plant and administration complex

Power station

136-person accommodation village

RO plant

New kitchen and mess hall



**February 2025**  
Open pit infrastructure setup  
progressing rapidly

Turnberry open pit and underground  
administration and workshop complex

Heavy vehicle workshop

125t digger on site getting assembled,  
200t digger arriving mid-February

Heavy vehicle go bay



**February 2025**  
St Anne's open pit

Waste dump

St Anne's North  
Stage 1 open pit crest

St Anne's South  
Stage 1 open pit crest



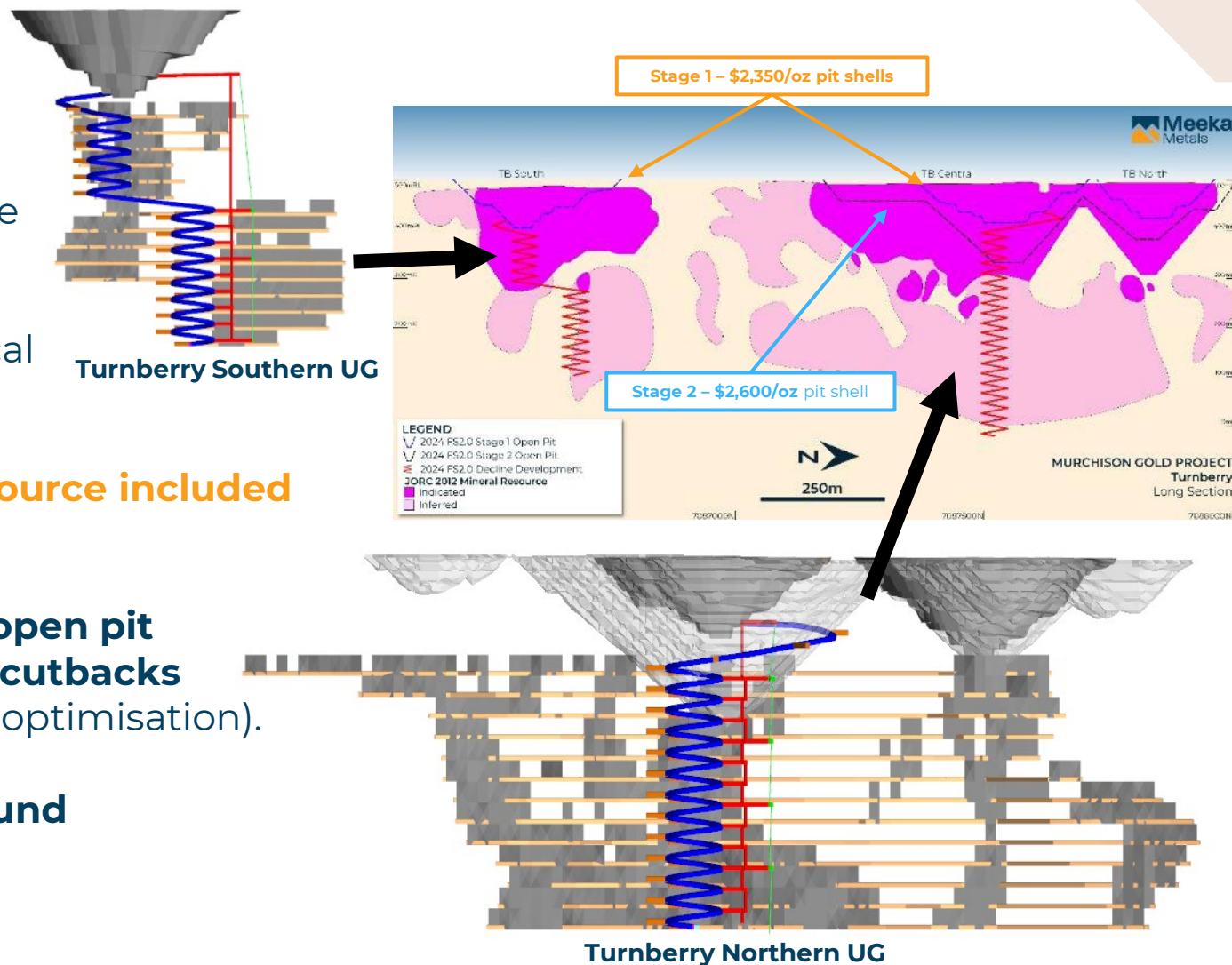
70,000kg Caterpillar D10  
bulldozer for scale



# Low Risk, Low-Cost Oxide Open Pits in First 12 Months

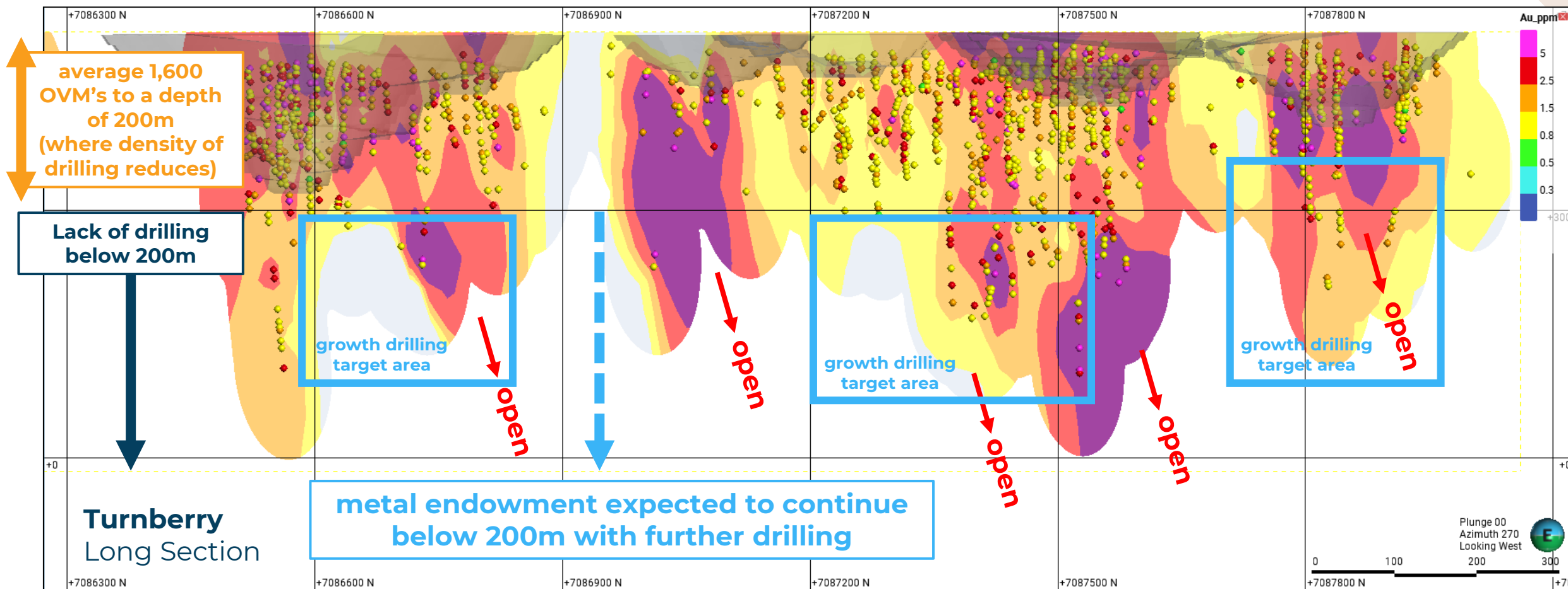
Underground mining to commence following stage 1 open pits.

- Stage 1 open pit mining commencing 1 March 2025.
- 360koz @ 1.4g/t Au open pit Mineral Resource (86% M&I).
- No prior mining, averages ~1,600oz per vertical metre.
- **Only 75koz of 360koz open pit Mineral Resource included in the FS2 production plan.**
- **Significant opportunity to further expand open pit production beyond stage 2 with future pit cutbacks** (stage 2 open pits based on \$2,600/oz Au pit optimisation).
- **Further drilling likely to delivery underground production growth.**





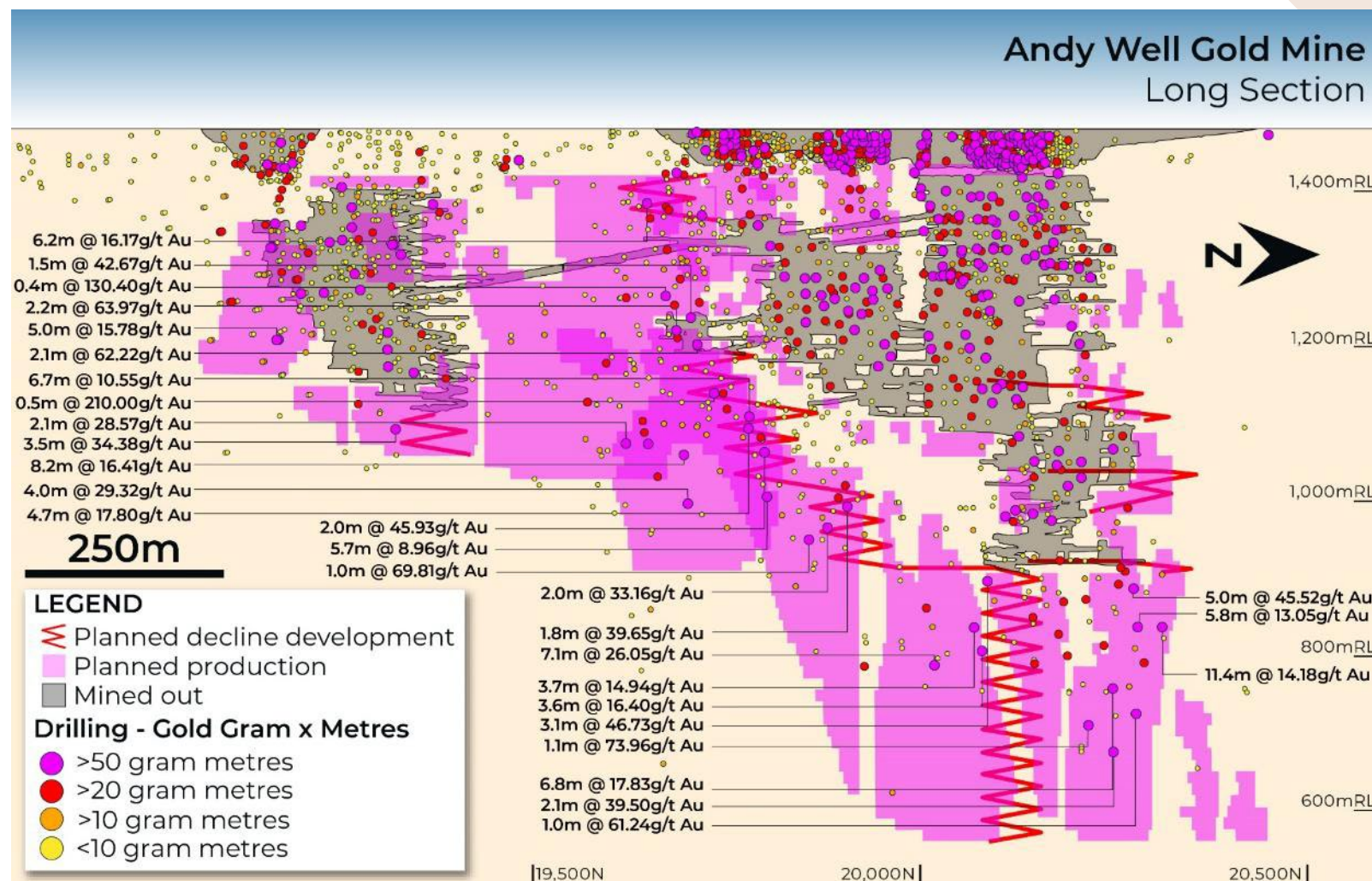
# Further Drilling Below Turnberry Open Pits is Expected to Deliver Underground Growth



# Andy Well Underground

High-grade, rapid, low capital re-start from existing decline development.

- High-grade **505koz @ 8.6g/t Au** Mineral Resource (73% M&I).
- Mining stopped in 2017 at ~A\$1,550/oz gold price.
- ✓ **Work setting up services to re-access the underground mine is underway now.**
- FS2.0 outlines initial 7 years of production commencing 2025.
- **Accelerated production timeline** given 6km of existing development.
- All lodes remain open; extensive drilling campaigned planned for 2025.

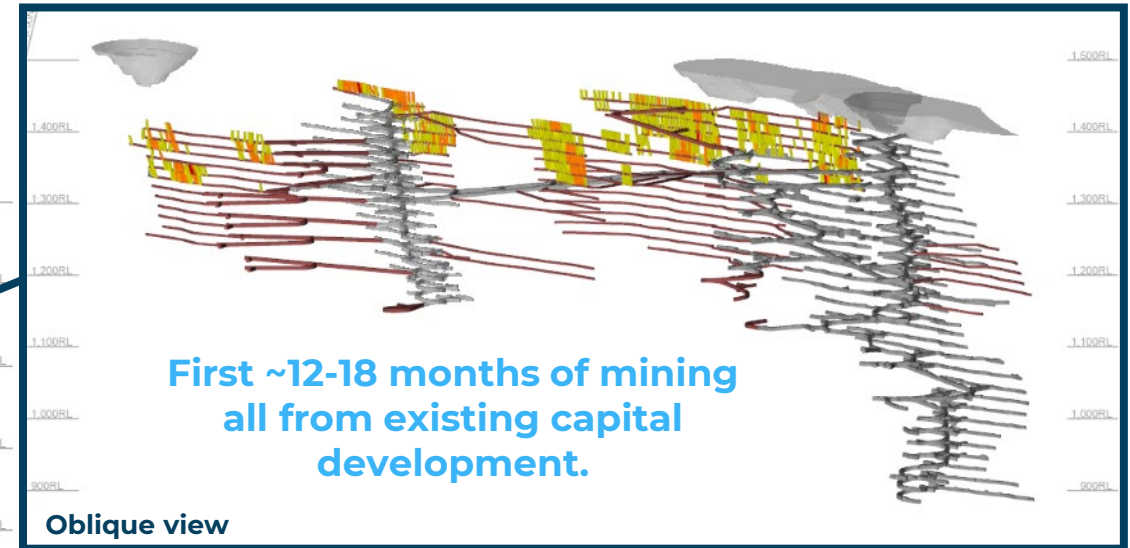
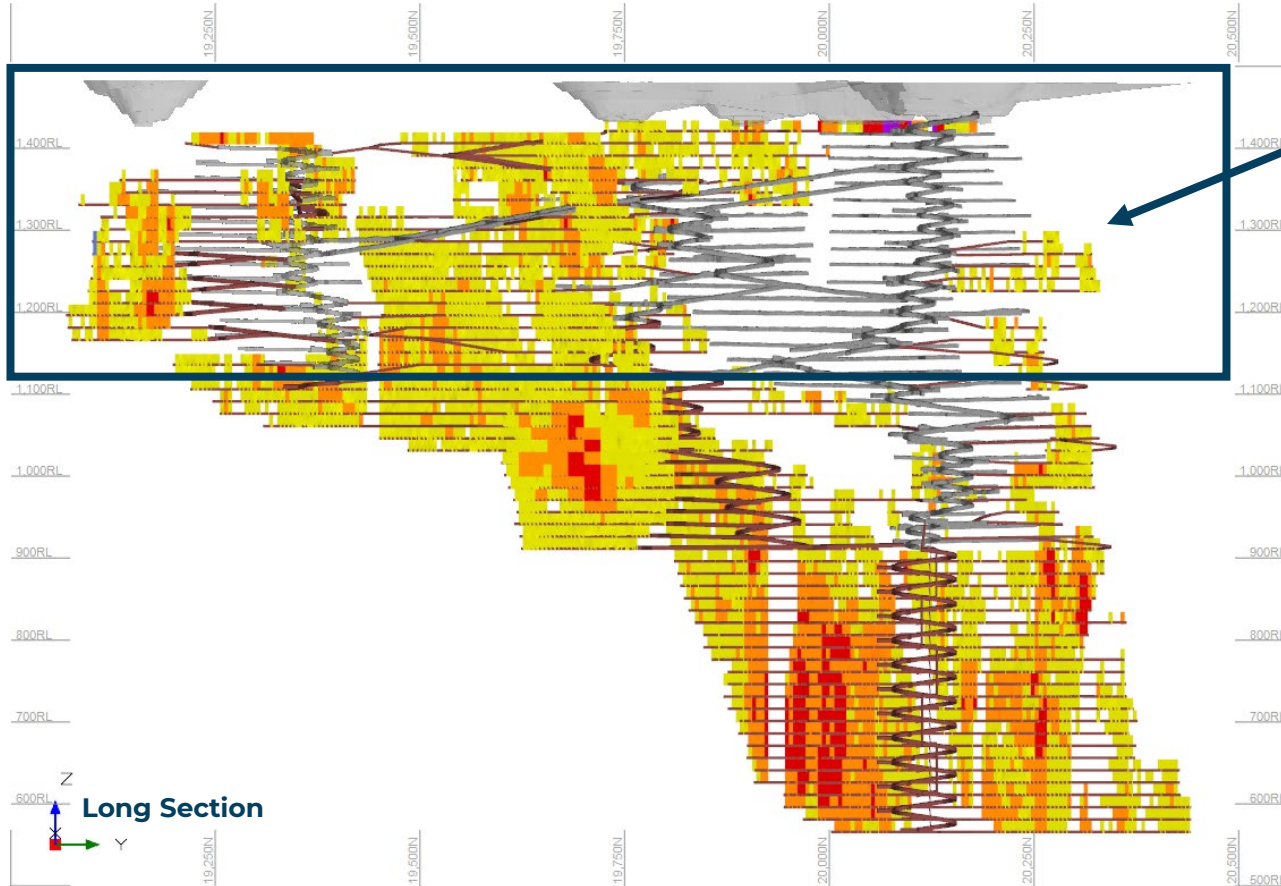




# Andy Well Underground

## Rapid re-start in CY25.

- Accelerated production schedule following expansion in available processing capacity.
- Mining to commence in first half of CY25.

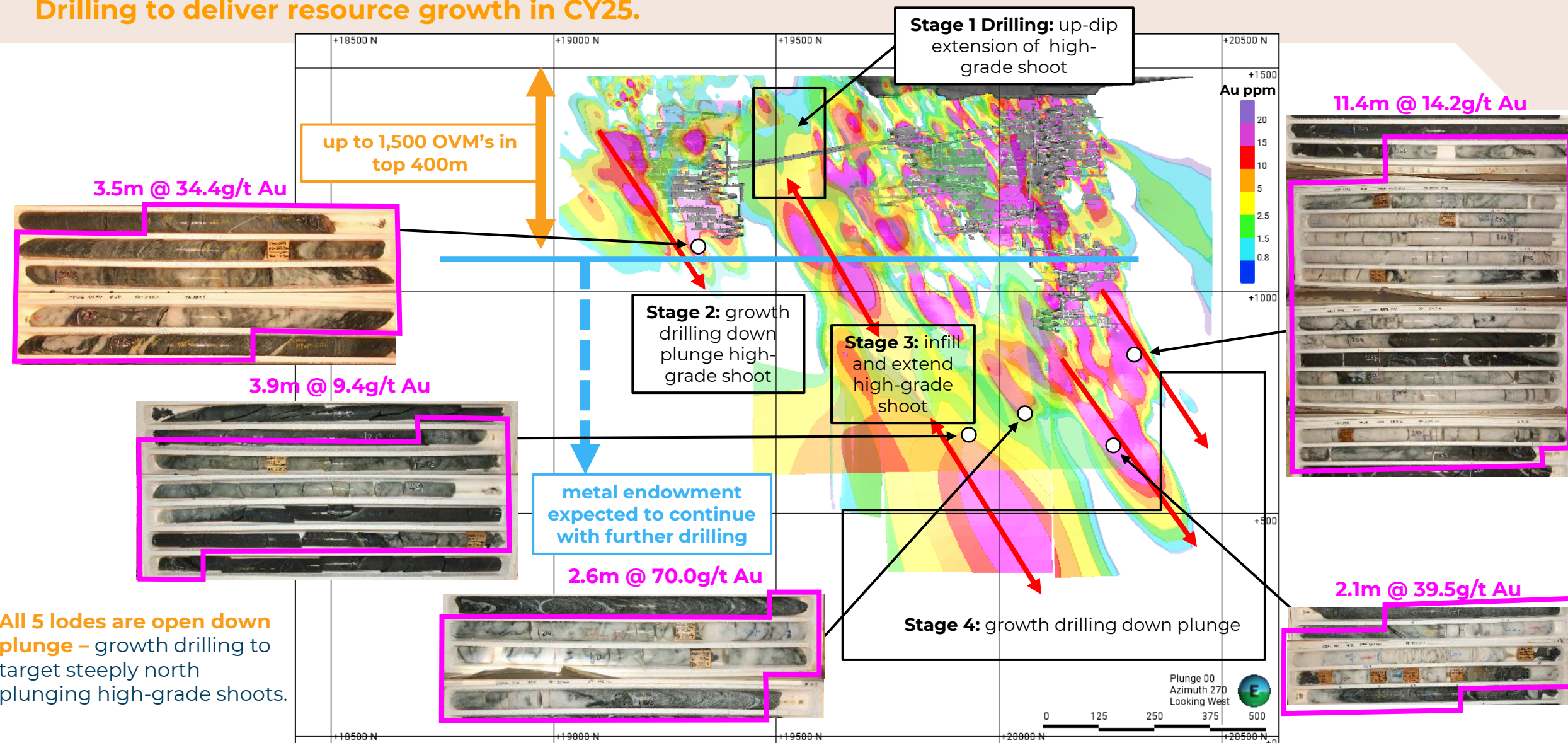


- Low capital re-start with existing development already in place.
- First 12 months of production from shallow, virgin mining areas.
- Drilling for growth to commence in 2025 in parallel with mining.



# Andy Well Growth

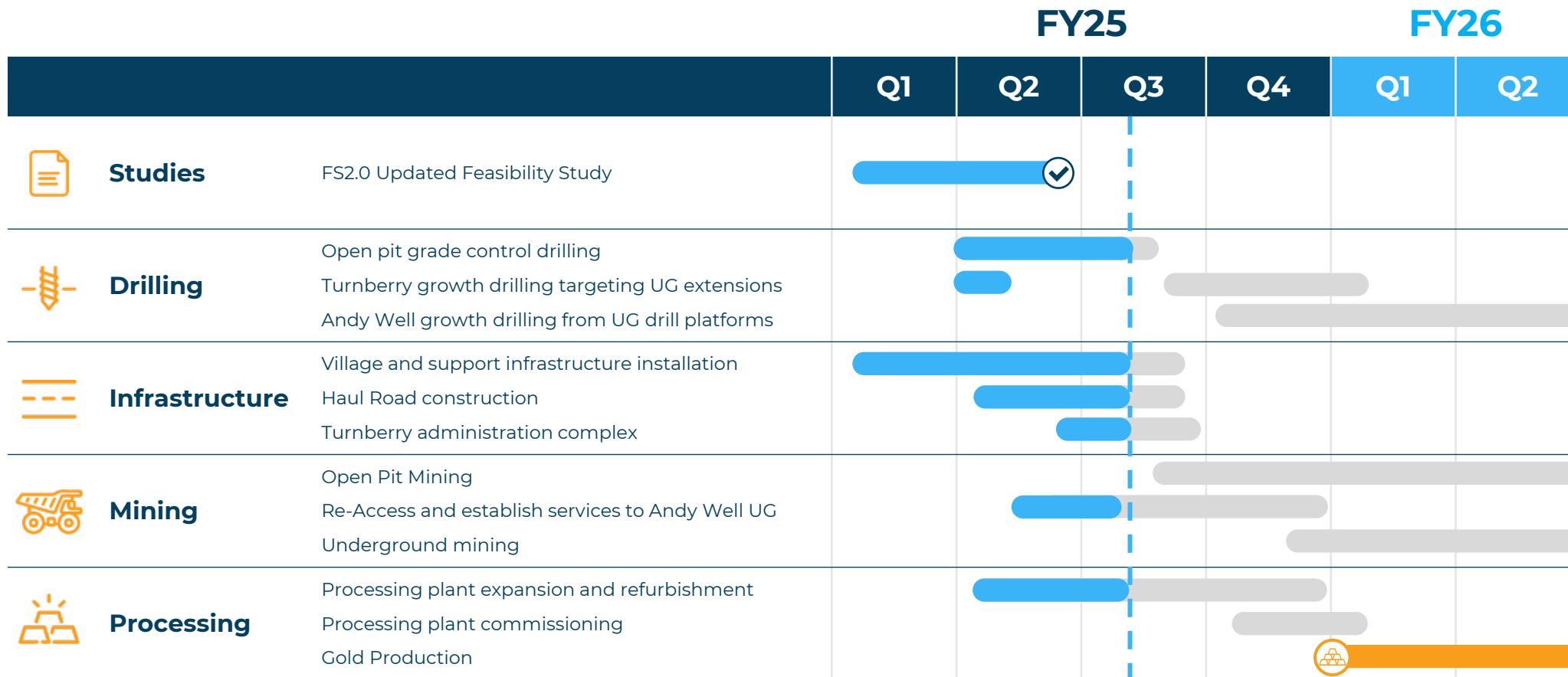
Drilling to deliver resource growth in CY25.



All 5 lodes are open down plunge – growth drilling to target steeply north plunging high-grade shoots.

# Looking Forward Through FY26

Progress versus plan.







# Contact

**Tim Davidson** | Managing Director

+61 8 6388 2700

[info@meekametals.com.au](mailto:info@meekametals.com.au)

ASX:**MEK**

[meekametals.com.au](http://meekametals.com.au)

