

BATTERY GRADE LITHIUM CARBONATE PRODUCED FROM PRAIRIE ADDITIONAL JORC DISCLOSURE

Arizona Lithium Limited (ASX: AZL, AZLO, OTC: AZLAF) (“Arizona Lithium”, “AZL” or “the Company”), a company focused on the sustainable development of two large Lithium development projects in North America, the Big Sandy Lithium Project (“Big Sandy”,) and the Prairie Lithium Project (“Prairie”), has reissued the announcement it released on 7 August 2024 to include the JORC Table 1 and updated competent persons statement.

This ASX announcement is authorised for release by the Managing Director.

For further information please contact:

Mr Paul Lloyd
Managing Director
Tel. +61 419 945 395
paul@arizonalithium.com

BATTERY GRADE LITHIUM CARBONATE PRODUCED FROM PRAIRIE

HIGHLIGHTS

- Battery grade lithium carbonate was produced from the Direct Lithium Extraction (DLE) eluent of the Iliad pilot that operated at the Prairie project from November 2023 – February 2024.
- The Battery grade product was produced in partnership with Saltworks Technology Inc.
- The first commercial production well has been drilled on Pad #1 at the Prairie project, with production results exceeding expectations.¹
- Pad #1 has been conditionally approved for up to a \$21.6m investment incentive under the Saskatchewan Government's Oil & Gas Processing Investment Incentive Program (OGPII).²

Arizona Lithium Limited (ASX: AZL, AZLO, AZLOA, OTC: AZLAF) ("Arizona Lithium", "AZL" or "the Company"), a company focused on the sustainable development of two large lithium development projects in North America, the Big Sandy Lithium Project ("Big Sandy") and the Prairie Lithium Project ("Prairie"), is pleased to announce it has produced battery grade lithium carbonate from the Prairie Project, which has been independently verified by Saltworks. The lithium carbonate was produced from the DLE eluent of the Iliad pilot that operated at the Prairie project from November 2023 – February 2024. DLE eluent was sent to Saltworks facility in Vancouver, Canada where it was converted into battery grade lithium carbonate. Figure 1 shows a sample of the battery grade Lithium Carbonate produced. Figure 2 shows the process flow diagram in order to go from brine from the Prairie Project to battery grade Lithium Carbonate. Figure 3 illustrates the Lithium Carbonate and wash equipment in Saltworks' test facility.

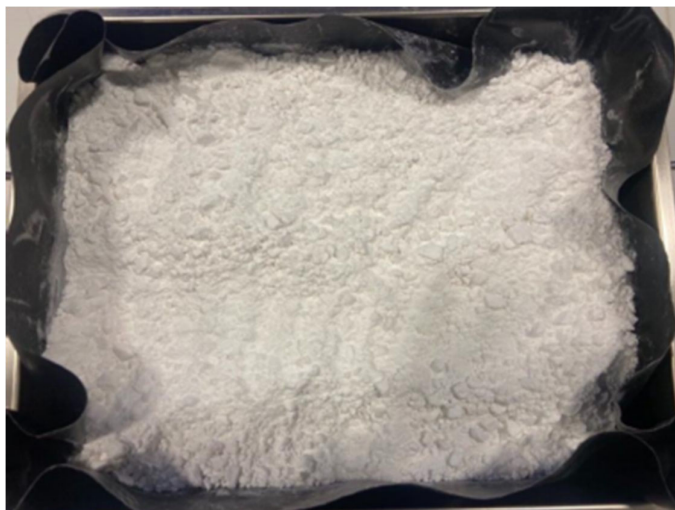


Figure 1: Lithium Carbonate

¹ ASX Announcement – "Lithium Discovery at Prairie" – 15 July 2024

² ASX Announcement – "\$21 Million Investment Incentive For The Prairie Project" – 18 July 2024

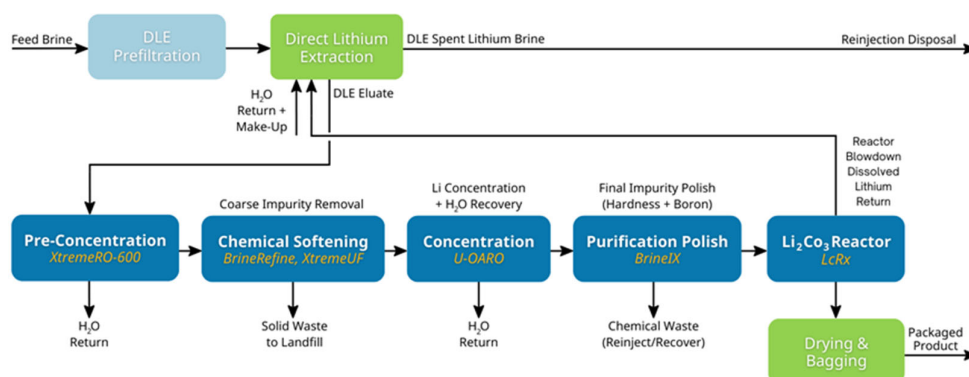


Figure 2: Lithium Carbonate Process Flow Diagram



Figure 3: Pilot Scale Lithium Carbonate and Wash Equipment

Arizona Lithium Managing Director, Paul Lloyd, commented: “Producing battery grade lithium carbonate from our flowsheet is an important step in showing the market the quality of product that we can produce. The battery grade product we produced is in sufficient quantities to go out to all the offtakers and strategic partners we are in conversation with. Our team remains focused on bringing Pad #1 at the Prairie project into production in 2025. The steps we have taken so far this year have highlighted our teams ability to execute on project plans, and I look forward to providing continued updates as we progress the project.”

Big Sandy Project Update

AZL’s Big Sandy Lithium Project received approval from the US Bureau of Land Management (BLM) for the Permit of Exploration (POE) on 11 July 2024. AZL’s management team is looking forward to a successful exploration campaign and updating the market on a positive resource expansion at Big Sandy in the short term. The Big Sandy Lithium project remains a core focus for AZL and management sees the project as being complementary to the Prairie Project – similar to its peers in the region, Big Sandy will be a large cash generator in a medium term timeframe, whereas Prairie Lithium is expected to generate consistent cash flows in a short term timeframe, as previously indicated to the market.

Notwithstanding the BLM approval received on 11 July 2024 after an extensive process, the Company has been provided with a copy of a “complaint” by the Hualapai Tribe lodged in the United States District Court

for the District of Arizona. The Company is not a party to the complaint and it notes that the Hualapai Tribe provided extensive submissions to the BLM as part of the approval process.

The complaint seeks (amongst other things) orders that the BLM violated the relevant legislation in issuing its approval and authorising the Big Sandy Project and is seeking to set aside and vacate the approval.

At this early stage and given the complaint has only been received, the Company is seeking advice on the effect of the complaint.

About the Prairie Lithium Project

AZL's Prairie Lithium Project is located in the Williston Basin of Saskatchewan, Canada, and holds a resource of 6.3 MT of LCE, comprised of 4.5 MT LCE Indicated and 1.8 MT LCE Inferred³. Located in one of the world's top mining friendly jurisdictions, the projects have easy access to key infrastructure including electricity, natural gas, fresh water, paved highways and railroads. The projects also aim to have strong environmental credentials, with Arizona Lithium targeting to use less use freshwater, land and waste, aligning with the Company's sustainable approach to lithium development.

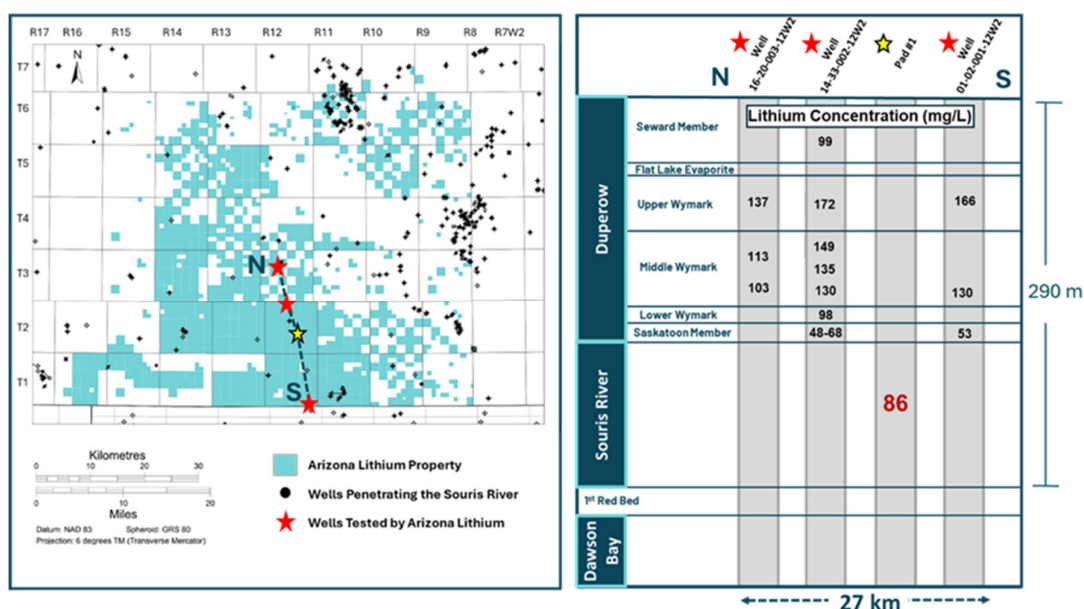


Figure 4: Location map and representative lithium concentrations from Arizona Lithium's test wells

³ ASX Announcement – "6.3 Million Tonne Lithium Resource At Prairie" – 13 December 2023

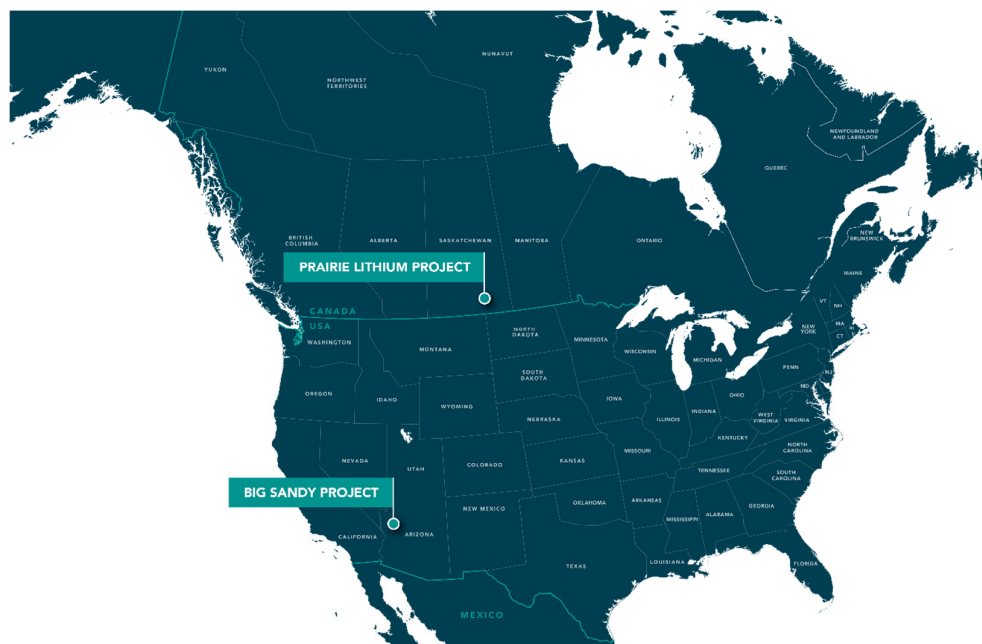


Figure 5: Location of Arizona Lithium's core projects

This ASX announcement is authorised for release by the Board.

For further information please contact:

Mr. Paul Lloyd
Managing Director
Tel. +61 419 945 395
paul@arizonalithium.com

Competent Persons statement for Prairie and Registered Overseas Professional Organisation (ROPO) and JORC Tables

Benjamin Sparrow P.Eng, Chief Engineer for Saltworks Technology Inc., reviewed and approves the technical information pertaining to the lithium carbonate test work within the release and in the attached JORC Table 1. He is a registered Professional Engineer in British Columbia, Canada, and has worked in the engineering field for 25 years. Mr. Sparrow is a Qualified Person as defined by 17 CFR § 229.1302 - (Item 1302) and has been involved in several pilot test programs, engineering design studies, and full scale projects regarding the commodity discussed in this release. He has sufficient experience relevant to qualify as a Competent Person as defined by the 'Australasian Code for Reporting Exploration Results, Mineral Resources and Ore Reserves – the JORC Code (2012)'. Mr Sparrow consents to the inclusion in this announcement of the matters based on this information in the form and context in which it appears.

Information in this announcement that relates to Mineral Resources have been extracted from the Company's announcement released to ASX on 13 December 2023.

The announcement is available to view on the Company's website: www.arizonalithium.com. The Company confirms that it is not aware of any new information or data that materially affects the information included in the original market announcement and, in the case of estimates of these Mineral Resources, that all material assumptions and technical parameters underpinning the estimates in the relevant market announcement continue to apply and have not materially changed. The Company confirms that the form and context in which the Competent Person's findings are presented have not been materially modified from the original market announcement.

JORC Code, 2012 Edition – Table 1

Section 1 Sampling Techniques and Data

(Criteria in this section apply to all succeeding sections.)

Arizona Lithium's Prairie Project (the Project) is approximately 200 km southeast of the city of Regina between the towns of Estevan and Weyburn. The centre of the property has a latitude 49.21363°N and a longitude 103.63518°W. The southern limit of the property is on the border with the states of North Dakota and Montana, United States. The subsurface permits of the property itself encompass parts of Townships 1 to 7 and Ranges 7 to 16 West of the 2nd Meridian.

Criteria	JORC Code explanation	Commentary
Sampling techniques	<p><i>Nature and quality of sampling (e.g. cut channels, random chips, or specific specialised industry standard measurement tools appropriate to the minerals under investigation, such as down hole gamma sondes, or handheld XRF instruments, etc). These examples should not be taken as limiting the broad meaning of sampling.</i></p> <p><i>Include reference to measures taken to ensure sample representivity and the appropriate calibration of any measurement tools or systems used.</i></p> <p><i>Aspects of the determination of mineralisation that are Material to the Public Report.</i></p> <p><i>In cases where 'industry standard' work has been done this would be relatively simple (e.g. 'reverse circulation drilling was used to obtain 1 m samples from which 3 kg was pulverised to produce a 30 g charge for fire assay'). In other cases, more explanation may be required, such as where there is coarse gold that has inherent sampling problems. Unusual commodities or mineralisation types (e.g. submarine nodules) may warrant disclosure of detailed information.</i></p>	<p>Historical well data from oil and gas exploration and newly collected data from wells drilled or recompleted specifically to test lithium concentrations and brine productivity were used to evaluate the lithium Mineral Resource.</p> <p>In 2021 and 2022, six wells have been drilled and/or recompleted in the Duperow Formation in the Project area:</p> <p>Wells drilled and/or recompleted by Arizona Lithium:</p> <ul style="list-style-type: none"> • 101/14-33-002-12W2 (Year 2021) • 104/01-02-001-12W2 (Year 2021) • 141/16-20-003-12W2 (Year 2022) <p>Wells drilled and/or recompleted by Hub City Lithium in partnership with ROK Resources:</p> <ul style="list-style-type: none"> • 111/11-02-009-13W2 (Year 2022) • 101/14-36-008-13W2 (Year 2022) • 101/02-22-007-09W2 (Year 2022) <p>Brine collection procedures for the wells tested since 2021 are outlined as follows:</p> <ul style="list-style-type: none"> • After the wells were drilled, they were cased and perforated over the zones of interest. Prior to perforating the zones of interest, a Cement Bond Log (CBL) was run and analysed to ensure zonal isolation behind the casing. • During well testing, formation water

Criteria	JORC Code explanation	Commentary
		<p>was brought to surface using an Electrical Submersible Pump (ESP) and by swabbing small volumes of fluid. During swabbing operations, packers were placed between each individual swabbed zone. The packers were pressure tested to ensure zonal isolation during the swabbing operations.</p> <ul style="list-style-type: none"> • Further measures taken to ensure sample representativity are discussed in 'Drill Sample Recovery'. <p>Legacy field sampling for lithium occurred between 1996 and 2019 as part of a basin wide characterization and mapping program. Seventeen samples considered representative of the Duperow Formation were analysed for lithium within, and immediately adjacent to, the Project. The samples were taken from Drill stem tests (DSTs), swab samples, and directly from well-heads of producing Duperow Formation oil wells as part of brine sampling programs by the Saskatchewan Geological Survey and University of Alberta.</p> <p>Multiple steps were taken to acquire representative brine samples. Procedures are outlined below, with excerpts taken from the Rostron et al. (2002) and Jensen (2015) publications.</p> <ul style="list-style-type: none"> • Drill stem test samples were voluntarily collected by operators and placed into sample kits for analysis. Sample kits consisted of three empty 250 ml bottles in a re-sealable plastic bag. Operators were asked to fill two containers with representative samples from the formation fluid and the third container was filled with drilling fluid. Bottles were labelled "A", "B", and "Drilling Fluid". All three samples were shipped to the Saskatchewan Industry and

Criteria	JORC Code explanation	Commentary
		<p>Resources Subsurface Core laboratory where the contents of bottle “A” were acidified with 2 ml of concentrated, double-distilled, 2.8 Normality nitric (HNO₃) acid to prevent precipitation of ions in solution. Safety and shipping regulations did not permit acidification of sample “A” at the well site, but testing demonstrated that later acidification still provided excellent quality data.</p> <ul style="list-style-type: none"> Producing wells with a water cut of >50% were also targeted for testing at strategic locations as part of yearly sampling campaigns. Wellhead samples were collected at the producing wells following a modified procedure after Lico et al. (1982). Any production chemicals used on the producing well were halted prior to sample collection. Oil-water emulsions were sampled into 8 litre or 12 litre pre-cleaned plastic jugs directly from the wellhead and allowed gravity to separate inside the container. Control samples were taken to determine if production chemicals affected the hydrochemical signature of the produced waters. The water fraction was pre-filtered through glass wool, followed by a 0.45-micron polyether sulfone filter to remove any colloids or organics that may have been present. Samples were aliquoted for field tests and laboratory analysis and split for anion and cation analysis. Anion samples were collected in tight-sealing containers and left untreated. Samples for cation determination were acidified to a pH<1 with triple distilled 2.8 Normality HNO₃ acid and then tightly

Criteria	JORC Code explanation	Commentary
		sealed for shipment and analysis. Sample containers were sealed with tamper-proof tape at the wellsite.
Drilling techniques	<i>Drill type (e.g. core, reverse circulation, open-hole hammer, rotary air blast, auger, Bangka, sonic, etc) and details (e.g. core diameter, triple or standard tube, depth of diamond tails, face-sampling bit or other type, whether core is oriented and if so, by what method, etc).</i>	<p>Brine samples were collected from historical producing Duperow Formation wells, along with six wells drilled and/or recompleted in the Project area since 2021. Wells drilled specifically to test the Duperow Formation in this area use mud rotary drilling, are drilled with brine mud, and are drilled with a bit size of 222 mm, which is standard for the specific types of wells.</p> <p>The shallowest sample used in the lithium Mineral Estimate was collected northeast of the Property at a depth of 1,700 mKB (121/10-03-008-05W2). The deepest sample was collected southeast of the Property from a depth of 3,087 mKB (API# 33-105-01468-00-00)</p>
Drill sample recovery	<p><i>Method of recording and assessing core and chip sample recoveries and results assessed. Measures taken to maximise sample recovery and ensure representative nature of the samples.</i></p> <p><i>Whether a relationship exists between sample recovery and grade and whether sample bias may have occurred due to preferential loss/gain of fine/coarse material.</i></p>	<p>Brine collection procedures for Arizona Lithium's tests wells (101/14-33-002-12W2, 104/01-02-001-12W2, 141/16-20-003-12W2) are outlined here.</p> <ul style="list-style-type: none"> • The procedures were designed and undertaken to obtain the highest quality samples of original formation fluids. • Prior to sampling operations, all lines and tanks were cleaned to remove any possible residual brine or hydrocarbon contamination. Samples were collected directly at the wellhead, or from sampling ports attached to flow lines as close to the wellhead as possible. Prior to sampling the test intervals, representative samples of all drilling and completion fluids were taken and analysed. • Field determination of density, resistivity, and pH of the initial

Criteria	JORC Code explanation	Commentary
		<p>samples from the well were used to determine when the well was producing representative samples.</p> <ul style="list-style-type: none"> Once it was determined that the well was producing formation water, samples were collected for lithium analysis in the laboratory. At the sample point, the well was opened to a waste receptacle for five to ten seconds to remove any debris build-up in the sample lines, then the sample was collected into 1 L, 2 L, or 4 L clean plastic screw-top jugs. Field containers were immediately labelled with date, time, sample interval, and then the container was transferred to the onsite laboratory for preliminary analysis. After a visual inspection for trace hydrocarbons and debris, samples with obvious debris were pre-filtered through glass wool. The sample was then filtered through a standard 0.45-micron filter to remove any particulates or oil. Once sufficient volume was filtered for analysis, samples were split into two to four containers (typically 1 L each), labelled with particulars (date, time, interval, an 'anonymous' sample ID for each laboratory), and sealed with secure tape on the caps. Each bottle was sealed with a tamper proof seal to ensure integrity. Samples were couriered to the various laboratories using full chain-of-custody documentation. <p>Similar sample collection procedures used for Hub City Lithium's test wells (111/11-02-009-13W2, 101/14-36-008-13W2, 101/02-22-007-09W2) are documented in</p>

Criteria	JORC Code explanation	Commentary
		their NI 43-101 Technical Report (April, 2023).
Logging	<p><i>Whether core and chip samples have been geologically and geotechnically logged to a level of detail to support appropriate Mineral Resource estimation, mining studies and metallurgical studies.</i></p> <p><i>Whether logging is qualitative or quantitative in nature. Core (or costean, channel, etc) photography.</i></p> <p><i>The total length and percentage of the relevant intersections logged.</i></p>	<p>Open-hole wireline logs provide the most widely available information to determine the porosity and water volume used in the Mineral Resource estimate.</p> <p>A petrophysical evaluation from open-hole wireline logs was completed by Arizona Lithium on 279 wells covering the Duperow Formation across the Project area to determine the average porosity over the net reservoir interval.</p> <p>Open-hole wireline logs typically include a gamma-ray, compensated neutron, litho-density, sonic, spontaneous potential, and resistivity standard suite. These tools are used to measure different rock and fluid properties.</p> <ul style="list-style-type: none"> • Gamma-ray – the determination of lithology and facies based on natural radioactivity of the formation. • Neutron logging tool - emits gamma-rays, which detect hydrogen content of a formation and convert this to a porosity calculated curve. • Density logging tools - emits gamma-rays to measure electron density to calculate porosity and photoelectric factor (PEF) to determine lithology. Combined with the neutron log, the density log can be used to identify fluid types, lithology, and porosity. • PEF logs - determines lithology from characteristic photoelectric absorption of the rock matrix. • Sonic logging tool - measurement of formation acoustic properties (e.g., velocity), used for lithology and porosity determination. • Resistivity logging tool - measurement of formation conductivity (reciprocal is

Criteria	JORC Code explanation	Commentary
		<p>formation resistivity) at different depths of investigation into the formation and generates shallow, medium, and deep resistivity curves that are used to estimate fluid types and quantities. Different resistivity logging tools are run depending on drilling mud chemistry (freshwater mud requires induction logging tools whereas saline mud requires laterologs).</p> <p>Quality Control and Construction of Arizona Lithium's Petrophysical Models Includes:</p> <ul style="list-style-type: none"> • Geological formations tops are used to assign petrophysical parameters to each zone. • Cores are depth shifted to match wireline logs and core samples are assigned to geological intervals. • Porosity and permeability cross-plotting determines the relationship between the matrix porosity and matrix permeability. • Grain Density histograms determine the appropriate mineral density for the porosity calculation. • Temperature data is collected from bottom hole gauges. Temperature data is tabulated from all available data from any geological formation to determine the overall geothermal gradient in the area. This is used for water saturation calculations and salinity estimates from wireline logs. • Water chemistry data is used for water saturation determination, salinity estimation and water compatibility studies.

Criteria	JORC Code explanation	Commentary
Sub-sampling techniques and sample preparation	<ul style="list-style-type: none"> • <i>If core, whether cut or sawn and whether quarter, half or all core taken.</i> • <i>If non-core, whether riffled, tube sampled, rotary split, etc and whether sampled wet or dry.</i> • <i>For all sample types, the nature, quality and appropriateness of the sample preparation technique.</i> • <i>Quality control procedures adopted for all sub-sampling stages to maximise representivity of samples.</i> • <i>Measures taken to ensure that the sampling is representative of the in situ material collected, including for instance results for field duplicate/second-half sampling.</i> • <i>Whether sample sizes are appropriate to the grain size of the material being sampled.</i> 	<p>Lithium samples are collected in the form of water samples not core. Procedures taken to ensure representative brine samples were collected are discussed in 'Drill Sample Recovery'.</p> <p>To ensure precise and accurate measurements of lithium concentration, multiple laboratories were used for analyses for Arizona Lithium's test wells (101/14-33-002-12W2, 104/01-02-001-12W2, 141/16-20-003-12W2).</p> <ul style="list-style-type: none"> • Each laboratory selected for use was required to pass a qualification test prior to their inclusion in the Project. The qualification test consisted of analysing a set of three samples for lithium concentration on an artificially prepared saline brine solution, created by Salman Safarimohsenabad (University of Alberta/Recon Technologies Inc.). The original stock solution contained 116 mg/L lithium and was diluted 1:1 and 1:2 to create the sample set. Each laboratory was evaluated for accuracy (i.e., how close to 116 mg/L) and precision (i.e., how close the three samples were to each other), prior to selection. This prepared sample was repeatedly run as part of major sample batches for Quality Assurance Quality Control (QA/QC). • As described in 'Drill Sample Recovery' samples were determined to be representative of formation water once a sufficient volume of water was removed from the sampling interval and field parameters were found to be stable. This was typically achieved after removing two to three times the volume of water in the tubing. • For each zone tested, up to 4 L of

Criteria	JORC Code explanation	Commentary
		<p>filtered fluid was collected for laboratory analysis. Each laboratory was sent approximately 1 L. Each laboratory analysis takes less than 1 mL, so each lab had sufficient sample volume to run repeats, etc.</p> <p>Similar sample measurement procedures used for Hub City Lithium's test wells (111/11-02-009-13W2, 101/14-36-008-13W2, 101/02-22-007-09W2) are documented in their NI 43-101 Technical Report (April, 2023).</p> <p>Sample measurement procedures for legacy field sampling for lithium that occurred between 1996 and 2019 include:</p> <ul style="list-style-type: none"> • Samples were analysed for many dissolved chemical species and various isotopes. Several different laboratories were used, depending on the constituent being analysed. • Overall, the analytical techniques used in these studies produced high quality saline brine analyses, with routinely charge balance errors of less than 5%.
Quality of assay data and laboratory tests	<ul style="list-style-type: none"> • <i>The nature, quality and appropriateness of the assaying and laboratory procedures used and whether the technique is considered partial or total.</i> • <i>For geophysical tools, spectrometers, handheld XRF instruments, etc, the parameters used in determining the analysis including instrument make and model, reading times, calibrations factors applied and their derivation, etc.</i> • <i>Nature of quality control procedures adopted (eg standards, blanks, duplicates, external laboratory checks) and whether acceptable levels of accuracy (ie lack of bias) and precision have been established.</i> 	<p>Up to four laboratories of different affiliations (e.g., large commercial, small commercial, internal, and academic) were utilised for analyses for Arizona Lithium's test wells. Hub City Lithium used Isobrine Solutions to analyse the lithium samples from their wells.</p> <p>The laboratories Include:</p> <p>Arizona Lithium laboratory (Emerald Park, Saskatchewan) - Arizona Lithium's internal laboratory provided initial rapid (<12 hour) analysis of lithium and sodium concentrations of sampled brines. Results from this laboratory were used for selecting samples for further/confirmation analyses at the other two laboratories. Due to the lack of independent status, concentrations</p>

Criteria	JORC Code explanation	Commentary
		<p>determined by this laboratory were not used in the final lithium concentration mapping but were used qualitatively and for additional confirmation of the results from the other laboratories.</p> <p>Isobrine Solutions, a small commercial laboratory in Edmonton, Alberta, and was affiliated with Arizona Lithium, was selected to provide rapid (one-to-two-day turnaround) lithium analyses and comprehensive analyses of selected brine samples. Isobrine Solutions specializes in analysing saline brines, including determining lithium, bromine, and stable isotopes, along with other major and trace elements. Results from Isobrine Solutions were used for lithium concentration mapping, but only after they were confirmed by the other two participating laboratories, thereby mitigating the question of independence from Arizona Lithium. Isobrine Solutions uses an ICP-OES to analyse for lithium and sodium (among other elements), but in addition uses an Ion Chromatograph (IC) to measure chloride (and other elements). The independently determined sodium and chloride are used to calculate a Charge Balance Error, which is a quality control check on the lithium analysis.</p> <p>Element Materials Technology (Element) is a large commercial laboratory in Edmonton, Alberta. Element was used for lithium and alkalinity analysis of selected samples, as they have been used for over 20 years as part of the University of Alberta/Isobrine/Saskatchewan Geological Survey sampling programs, and consequently brings continuity of the laboratory analysis. Element Materials Technology is accredited by A2LA to ISO/IEC 17025:2017. All the lithium analyses conducted by Element were done on an ICP-MS.</p> <p>AGAT Laboratories (AGAT) is a large commercial laboratory in Edmonton,</p>

Criteria	JORC Code explanation	Commentary
		<p>Alberta, and was used to confirm lithium analysis of selected samples of the other three laboratories. They are considered the most 'arm's length' to the Project. AGAT is accredited by CALA to ISO/IEC 17025:2017. AGAT conducted analyses for lithium using both ICP/MS, and ICP/OES, and after extensive testing it was determined that their ICP/OES using a constant 100 x dilution of samples provided accurate and precise results.</p>
<p>Verification of sampling and assaying</p>	<ul style="list-style-type: none"> <i>The verification of significant intersections by either independent or alternative company personnel.</i> <i>The use of twinned holes.</i> <i>Documentation of primary data, data entry procedures, data verification, data storage (physical and electronic) protocols.</i> <i>Discuss any adjustment to assay data.</i> 	<p>The Mineral Resource assessment was based on two types of lithium data: historical data collected from oil and gas infrastructure in the Project; and reservoir testing completed by Arizona Lithium and Hub City Lithium in 2021 and 2022.</p> <p>Arizona Lithium undertook a review of the historical sampling data to determine which samples were representative of formation water and which samples should be excluded due to QA/QC concerns. The QP verified the lithium concentration data by reviewing Arizona Lithium's QA/QC program, confirming the reported well names and concentrations in the referenced data sources, reviewing the reasonableness of the dataset based on regional water quality, and reviewing the dataset for consistency within the Project.</p> <p>A total of 72 samples were sent for analysis of lithium concentration during testing of the 101/14-33-002-12W2 and 104/01-02-001-12W2 wells. All 72 samples were analysed by Arizona Lithium and Isobrine Solutions. A subset of 29 of those 72 samples were sent to Element and of those 29 samples, 26 were sent for analysis to AGAT. Samples sent to three/four laboratories were the last two samples collected in a time series from each of the 14 zones investigated in the sampling program (three combined flow tests, eight zones in 101/14-33-002-12W2M, and three zones in 104/01-02-001-12W2).</p>

Criteria	JORC Code explanation	Commentary
		<p>A total of 75 samples were sent for analysis of lithium concentration during testing of the 141/16-20-003-12W2 well. 32 samples were analysed by Isobrine Solutions, 21 samples were analysed by Element and 22 samples were analysed by Arizona Lithium.</p> <p>In a typical hydrochemical sampling program, the QA/QC measures would include 5% to 10% blind duplicate samples to test the precision of the analyses. A total of 32 samples were analysed at Isobrine Solutions and independently analysed by at least one other laboratory (Element, or Arizona Lithium). This far exceeds the 5% to 10% duplicate sample standard.</p> <p>As part of the QA/QC process, the prepared laboratory standard (S. Safarimohsenabad, Recion Technologies Inc.) was included in batches to ensure continued accuracy of the laboratory analysis. Any time the laboratory obtained a lithium value outside the 110 mg/L to 120 mg/L range, repeat analyses of the entire sample batches were conducted.</p> <p>Hub City Lithium has tested over 50 water samples from three wells since 2021 (NI 43-101 Technical Report, April, 2023)</p>
Location of data points	<ul style="list-style-type: none"> • <i>Accuracy and quality of surveys used to locate drill holes (collar and down-hole surveys), trenches, mine workings and other locations used in Mineral Resource estimation.</i> • <i>Specification of the grid system used.</i> • <i>Quality and adequacy of topographic control.</i> 	<p>For Arizona Lithium's test wells (101/14-33-002-12W2 and 141/16-20-003-12W2), detailed site surveys were completed by Caltech Surveys. The surveys were carried out in accordance with Article XIII, Standards of Practice, Section 6 of the bylaws of the Saskatchewan Land Surveyors Association. These high-quality site surveys are routine for oil and gas wells drilled in Saskatchewan.</p> <p>The geographical land grid format survey is in NAD 83 and UTM Zone 13N.</p>
Data spacing and distribution	<ul style="list-style-type: none"> • <i>Data spacing for reporting of Exploration Results.</i> • <i>Whether the data spacing, and distribution is sufficient to establish the degree of geological and grade</i> 	<p>Lithium concentration samples from Duperow Formation brines have been collected all around Arizona Lithium's Property.</p>

Criteria	JORC Code explanation	Commentary
	<p><i>continuity appropriate for the Mineral Resource and Ore Reserve estimation procedure(s) and classifications applied.</i></p> <ul style="list-style-type: none"> • <i>Whether sample compositing has been applied.</i> 	<p>The range in spacing between wells with lithium concentration measurements varies from 610 m between the most closely spaced wells to over 68,000 m between the most widely spaced wells.</p> <p>The Duperow Aquifer is judged to be hydraulically continuous within, and far beyond, the Arizona Lithium resource area. The DST-measured lithium concentrations in the Duperow Formation suggest that lithium concentrations are continuous across the Project. This is based on regional hydrochemical mapping conducted over 25 years demonstrating systematic patterns of water chemistry across the project area. The Saskatchewan Phanerozoic Fluids and Petroleum Systems Project (Jensen et al., 2015) was based on hundreds of water samples collected and submitted to the Government of Saskatchewan. The reason there are not an equivalent number of lithium analyses, is simply because the operators were not required to analyse for lithium.</p> <p>Arizona Lithium's sampling program supports the interpretation of regionally consistent lithium values. Furthermore, sampling program results suggest some of the variability between previously reported lithium concentrations in the Duperow Formation may be due to the differing geologic units that were sampled.</p>
Orientation of data in relation to geological structure	<ul style="list-style-type: none"> • <i>Whether the orientation of sampling achieves unbiased sampling of possible structures and the extent to which this is known, considering the deposit type.</i> • <i>If the relationship between the drilling orientation and the orientation of key mineralised structures is considered to have introduced a sampling bias, this should be assessed and reported if material.</i> 	<p>Duperow Formation brines have been sampled from vertical wells that have been drilled perpendicular to the Duperow Formation stratigraphy. There is no relationship between the drilling orientation and the formation water quality, so no sampling bias related to sampling orientation is present.</p>
Sample security	<ul style="list-style-type: none"> • <i>The measures taken to ensure sample security.</i> 	<p>Sample security procedures for Arizona Lithium's test wells (101/14-33-002-12W2,</p>

Criteria	JORC Code explanation	Commentary
		<p>104/01-02-001-12W2, 141/16-20-003-12W2):</p> <ul style="list-style-type: none"> • Samples were collected directly from the wellhead into 1, 2, or 4L containers (as described above). Samples taken in the field were placed in bottles and were labelled according to the date of sample collection, name of the sampler, location of the sampling and number of the sample. • After field processing (measurement, filtration, splitting) samples were labelled with anonymous tracking numbers, sealed, security taped (tamper proof seals), and shipped to the laboratories. • The samples were later double checked and sent to the third-party laboratories by Purolator shipping services whilst conforming to the required transport protocols. The corresponding Chain of Custody was either sent with the samples or was sent to the third party by email. The third party always confirmed the receipt of the samples by sending the chain of custody including the analyses requests, sample descriptions, client identities (IDs), third party IDs and client notes. <p>Similar sample security procedures used for Hub City Lithium's test wells (111/11-02-009-13W2, 101/14-36-008-13W2, 101/02-22-007-09W2) are documented in their NI 43-101 Technical Report (April, 2023).</p> <p>Sample security procedures for legacy field sampling for lithium that occurred between 1996 and 2019:</p> <ul style="list-style-type: none"> • Samples were transported to the University of Alberta, where they were relabelled, transferred, and split into "anonymous" sample containers. This was conducted to maintain confidentiality of the operator, date, well name, location, interval, and fluid

Criteria	JORC Code explanation	Commentary
		recovery. The samples were then sent to various laboratories for analysis.
Audits or reviews	<ul style="list-style-type: none"> <i>The results of any audits or reviews of sampling techniques and data.</i> 	<p>Arizona Lithium's QP was involved throughout the testing program, including participating in the development of the testing program, planning the QA/QC for the water sampling, and witnessing the testing at the 101/14-33-002-12W2 well from October 19 to October 22, 2021. During the time that the QP was at the 101/14-33-002-12W2 well, four different intervals of the Duperow Formation were developed until representative samples could be collected for laboratory analysis. The QP witnessed the sample preparation, analysis, and security measures of the reservoir testing, and can verify that the procedures were consistent with the description provided.</p> <p>Arizona Lithium's QP was not on site during the collection of the water samples from the 141/16-20-003-12W2 well but was on site for a previous sampling program completed in 2021. The QP witnessed the sample preparation, analysis, and security measures of the reservoir testing completed in 2021 and can verify that the procedures were consistent with the description provided.</p> <p>The Author of Hub City Lithium's NI 43-101 Technical Report (April, 2023) has completed a detailed review of all technical data and information provided in the report. Key aspects include verification of sample analysis, well-completion and production information, mineral ownership, and geologic data. The verification process involved reviewing all third-party reports and where possible, independently confirming data supplied by Hub City Lithium as valid. Interviews with testing companies, field staff and Hub City Lithium's employees were conducted as part of the review process.</p>

Section 2 Reporting of Exploration Results

(Criteria listed in the preceding section also apply to this section.)

Criteria	JORC Code explanation	Commentary
Mineral tenement and land tenure status	<ul style="list-style-type: none"> <i>Type, reference name/number, location and ownership including agreements or material issues with third parties such as joint ventures, partnerships, overriding royalties, native title interests, historical sites, wilderness or national park and environmental settings.</i> <i>The security of the tenure held at the time of reporting along with any known impediments to obtaining a licence to operate in the area.</i> 	<p>Arizona Lithium rents and leases subsurface mineral permits in Saskatchewan close to the United States border. The crown subsurface minerals are rented or leased from the Saskatchewan Provincial Government and cover 354,920 acres.</p> <p>Petroleum and Natural Gas (PNG) permits also exist across Arizona Lithium's Property and are leased to oil and gas producers.</p> <p>All crown permits and stratigraphic intervals are held 100% by Arizona Lithium or sub-leased from a geothermal company Deep Earth Energy Production Corp. (DEEP). Arizona Lithium entered into a binding legal Subsurface Mineral Permit Acquisition Agreement (SMPAA) with DEEP on October 20, 2021. The SMPAA covers an Area of Mutual Interest (AMI) over Townships 1 to 4 and Ranges 7 to 16 West of the 2nd Meridian. Any pre-existing or recently purchased subsurface mineral permits within the AMI now possess a stratified stratigraphic arrangement. Arizona Lithium holds 100% working interest in mineral rights from Top Madison Group to Top Red River Formation, and DEEP holds 100% working interest in mineral rights from Top Red River Formation to Precambrian. No back-in rights, payments, or other agreements and encumbrances are applicable.</p> <p>The subsurface mineral permits are rented from the Saskatchewan Provincial Government, and the Subsurface Mineral Leases are leased. There has been no prior ownership of the subsurface mineral permits across the Project for lithium.</p> <p>Two mineral permits were awarded on December 17, 2019, which will expire in December 2027; three permits were acquired on April 20, 2020, which expire in April 2028; a total of 34 permits were</p>

Criteria	JORC Code explanation	Commentary
		<p>acquired on April 19, 2021, which expire in April 2029; and a total of 16 permits were acquired on August 23, 2021, which expire in August 2029. On September 8th, 2022, two permits were converted into 21-year mineral leases and expire on April 11th, 2043. An additional 18 permits have been sub-leased from DEEP.</p> <p>The provincial royalty rate on mineral leases for lithium is currently set at 3%, with a royalty free period for the first 24 months of production.</p> <p>Within the project area, Arizona Lithium leases varied % interest in mineral rights from Canpar Holdings Ltd. and Freehold Royalties Ltd. for a total of 26,445 net acres from Canpar Holdings Ltd. and 12,968 net acres from Freehold Royalties Ltd.</p> <p>The lease out date for these leases is November 15, 2023.</p> <p>The Ministry of Energy and Resources (MER) has indicated to Arizona Lithium that the process to license wells for injection, water source, disposal, or production of lithium will follow that of the oil and gas industry.</p> <p>Arizona Lithium is not aware at the date of this report of any known environmental issues that could materially impact their ability to extract lithium from the Project.</p> <p>Appendix 1: Summary of Arizona Lithium's subsurface mineral permits and leases.</p>

<p>Exploration done by other parties</p>	<ul style="list-style-type: none"> • <i>Acknowledgment and appraisal of exploration by other parties.</i> 	<p>There has been abundant drilling for oil and gas in southeastern Saskatchewan. This oil and gas exploration work has produced the high-quality geologic data (wireline logs, core, and reservoir testing) that was used in Arizona Lithium's report.</p> <p>Other parties, including government and academic research teams, have also leveraged oil and gas wells to evaluate brine chemistry. Academic research (Iampen and Rostron, 2000; Iampen, 2001; Shouakar-Stash, 2008) and the Saskatchewan Geological Survey / University of Alberta (Rostron et al., 2002; Jensen 2011, 2012, 2015, 2016; Jensen and Rostron, 2017, 2018; Jensen et al., 2019) have published several technical reports characterizing the lithium potential of various stratigraphic intervals in southern and central Saskatchewan.</p> <p>Brine-rich formation water from oil and gas producing intervals have been tested for lithium and other elements by these researchers from University of Alberta and the Saskatchewan Geological Survey.</p> <p>Historical brine samples from 15 wells in and adjacent to Arizona Lithium's Project have been analysed for lithium concentrations and are interpreted to be representative of the Duperow Formation brine (Iampen and Rostron, 2000; Iampen, 2001; Shouakar-Stash, 2008) and the Saskatchewan Geological Survey / University of Alberta (Rostron et al., 2002; Jensen 2011, 2012, 2015, 2016; Jensen and Rostron, 2017, 2018; Jensen et al., 2019). Two of the wells (121/09- 13-002-22W2 and 141/14-12-007-11W2) were sampled twice, resulting in a total of 17 representative lithium concentrations.</p> <p>A total of 13 of the lithium samples were published in the referenced reports. Four samples (101/07-27-007-06W2/03, 121/09-03-007-11W2, 141/13-02-007-11W2, and 141/01-22-004-19W2/00) were sourced from an unpublished database. These</p>
---	--	---

Criteria	JORC Code explanation	Commentary
		<p>additional data points were collected and analysed by researchers at the University of Alberta between 1996 and 2004 and obtained under agreement from Isobrine Solutions Incorporated (Isobrine Solutions), a University of Alberta spin-off company. Isobrine Solutions holds a Permit to Practice from APEGA, along with a Certificate of Authorization from APEGS to practice in Saskatchewan. The data was provided to Arizona Lithium for their lithium exploration project in good faith.</p> <p>Based on the results of more recent drilling and testing in 2021 and 2022 (below), Arizona Lithium believes there is a high degree of spatial correlation of lithium concentrations within individual Duperow Formation units and that the variation of lithium concentration between historical sampling programs may be due to the units sampled in the historical tests.</p> <p>Wells drilled and tested by Arizona Lithium:</p> <ul style="list-style-type: none"> • 101/14-33-002-12W2 (Year 2021) • 104/01-02-001-12W2 (Year 2021) • 141/16-20-003-12W2 (Year 2022) <p>Wells drilled and tested by Hub City Lithium in partnership with ROK Resources:</p> <ul style="list-style-type: none"> • 111/11-02-009-13W2 (Year 2022) • 101/14-36-008-13W2 (Year 2022) • 101/02-22-007-09W2 (Year 2022)
Geology	<ul style="list-style-type: none"> • <i>Deposit type, geological setting and style of mineralisation.</i> 	<p>The target interval of this Project is porous carbonate rocks of the Upper Devonian (Frasnian) Duperow Formation, Saskatchewan Group (Gerhard et al., 1982; Kent and Christopher, 1994). Upper Devonian sediments were laid down in a northwest to southeast elongated Elk Point Basin that extended broadly from northwestern Alberta, through Saskatchewan, and across into North Dakota and Montana (Dunn, 1975).</p> <p>The Duperow Formation correlates westward with the Leduc Formation, a prominent series of reefs in the open-</p>

Criteria	JORC Code explanation	Commentary
		<p>marine Alberta Basin. Middle and Late Devonian sedimentation was characterized by cyclic carbonates and evaporites. Cyclic ordering of strata from shelf carbonates to restricted supratidal carbonates and evaporites, are identified as shallowing-upward or "brining-upward" parasequences and these cyclic intervals are recognized throughout the entire Devonian stratigraphic column in the Elk Point Basin of southern Saskatchewan (Kent and Christopher, 1994). The Duperow Formation was deposited as a shallow-marine, carbonate inner platform to supratidal sabkha or tidal flat (Cen and Salad Hersi, 2006).</p> <p>The deposit type being explored by Arizona Lithium is a lithium-bearing brine hosted by the Duperow Formation. Other lithium-rich brine deposits within oilfields include the brines within the Smackover Formation of the Gulf Coast and the Leduc Formation in Alberta (Kesler et al., 2012; Howell et al., 2020).</p> <p>Lithium brines are defined as accumulations of saline groundwater enriched in dissolved lithium (Bradley, et al., 2017) within arid climates. Lithium brines are located within closed sedimentary basins with a close association with evaporite deposits resulting from trapped evaporatively concentrated seawater (Bradley et al., 2013). Lithium brines are hosted within one or more aquifers, which have had sufficient time to concentrate a brine (Bradley et al., 2017).</p> <p>Historical and newly acquired brine analysis data indicates that the Property is located within an area of extremely elevated TDS brine above 300,000 mg/L and with lithium concentrations of up to 258 mg/L within the Duperow Formation. Newly acquired geochemical data has allowed Arizona Lithium to characterize lithium content of the Duperow Formation within much of the</p>

Criteria	JORC Code explanation	Commentary
		<p>Property. Lithium results from wells located across the Property and beyond indicate that lithium concentrations are elevated and laterally continuous across the Property.</p> <p>The northern limit of elevated lithium concentrations in the Duperow Formation occurs beyond the northern limits of the Property. Elevated lithium trends extend through the Property and south into North Dakota. Lithium values indicate low lithium concentrations from R18W2 and beyond to the west.</p>
Drill hole Information	<ul style="list-style-type: none"> • A summary of all information material to the understanding of the exploration results including a tabulation of the following information for all Material drill holes: <ul style="list-style-type: none"> ○ easting and northing of the drill hole collar ○ elevation or RL (Reduced Level – elevation above sea level in metres) of the drill hole collar ○ dip and azimuth of the hole ○ down hole length and interception depth ○ hole length. • If the exclusion of this information is justified on the basis that the information is not Material and this exclusion does not detract from the understanding of the report, the Competent Person should clearly explain why this is the case. 	<p>See Appendix 2: Summary Table of Drill Holes</p> <ul style="list-style-type: none"> • 279 wells with wireline logs to determine the average porosity over the net pay interval. • 19 wells with brine samples analysed for lithium concentration.
Data aggregation methods	<ul style="list-style-type: none"> • In reporting Exploration Results, weighting averaging techniques, maximum and/or minimum grade truncations (e.g. cutting of high grades) and cut-off grades are usually Material and should be stated. • Where aggregate intercepts incorporate short lengths of high grade results and longer lengths of low grade results, the procedure used 	<p>Based on the geologic setting, the Duperow Aquifer is judged to be hydraulically continuous within, and far beyond, the Arizona Lithium resource area. The DST-measured lithium concentrations in the Duperow Formation suggest that lithium concentrations are continuous across the Project.</p> <p>Arizona Lithium's and Hub City Lithium's sampling programs (2021-2022) support</p>

Criteria	JORC Code explanation	Commentary
	<p><i>for such aggregation should be stated and some typical examples of such aggregations should be shown in detail.</i></p> <ul style="list-style-type: none"> <i>The assumptions used for any reporting of metal equivalent values should be clearly stated.</i> 	<p>the interpretation of regionally consistent lithium values and suggests that some of the measured variability between previously reported lithium concentrations in the Duperow Formation may be due to the differing geologic units that were sampled.</p>
Relationship between mineralisation widths and intercept lengths	<ul style="list-style-type: none"> <i>These relationships are particularly important in the reporting of Exploration Results.</i> <i>If the geometry of the mineralisation with respect to the drill hole angle is known, its nature should be reported.</i> <i>If it is not known and only the down hole lengths are reported, there should be a clear statement to this effect (e.g. 'down hole length, true width not known').</i> 	<p>Geophysical wireline logs from wells drilled through the Duperow Formation were used to identify the top and base of the formation. A total of 570 wells were used to determine the top of the Duperow Formation and 548 wells were used to determine the base of the Duperow Formation.</p> <p>279 wells with wireline logs to determine the average porosity over the net pay interval and 19 wells with brine samples were analysed for lithium concentration.</p> <p>The majority of the wells are vertical and drilled perpendicular to the Duperow Formation stratigraphy, and therefore perpendicular to the mineralization.</p>
Diagrams	<ul style="list-style-type: none"> <i>Appropriate maps and sections (with scales) and tabulations of intercepts should be included for any significant discovery being reported. These should include, but not be limited to a plan view of drill hole collar locations and appropriate sectional views.</i> 	<p>Appropriate maps and cross sections include:</p> <ul style="list-style-type: none"> Figure A-1: Wells drilled through the Duperow Formation with Petrophysical Evaluations completed for the Resource Assessment (279 wells) Figure A-2: Cross section of wells in Saskatchewan with lithium concentrations within and adjacent to Arizona Lithium's Property Figure A-3: West to East Cross Section Across the Property Figure A-4: North to South Cross Section Across the Property
Balanced reporting	<ul style="list-style-type: none"> <i>Where comprehensive reporting of all Exploration Results is not practicable, representative reporting of both low and high grades and/or widths should</i> 	<p>Table A-1: Representative lithium concentrations within the Indicated Resource area based on the mass volume and brine volume estimates.</p>

Criteria	JORC Code explanation	Commentary
	<i>be practiced to avoid misleading reporting of Exploration Results.</i>	
Other substantive exploration data	<ul style="list-style-type: none"> <i>Other exploration data, if meaningful and material, should be reported including (but not limited to): geological observations; geophysical survey results; geochemical survey results; bulk samples – size and method of treatment; metallurgical test results; bulk density, groundwater, geotechnical and rock characteristics; potential deleterious or contaminating substances.</i> 	<p>Lithium carbonate was produced at Saltworks Technologies Inc., and purity was validated by a 3rd party laboratory, SGS in Canada.</p> <p>DLE pilot plant test work taking place from November 2023 to February 2024 took place in Emerald Park, SK, Canada using technology provided by iLiAD Technologies, LLC. The lithium recovery and extraction calculations were based on grab samples collected every 4 hours. Samples were analyzed by three different laboratories using ICP, NMR, and flame spectroscopy instrumentation.</p>
Further work	<ul style="list-style-type: none"> <i>The nature and scale of planned further work (e.g. tests for lateral extensions or depth extensions or large-scale step-out drilling).</i> <i>Diagrams clearly highlighting the areas of possible extensions, including the main geological interpretations and future drilling areas, provided this information is not commercially sensitive.</i> 	<p>Further well drilling is planned to test pumping and injection rates. The additional wells should further demonstrate resource grade and productivity.</p>

Section 3 Estimation and Reporting of Mineral Resources

(Criteria listed in section 1, and where relevant in section 2, also apply to this section.)

Criteria	JORC Code explanation	Commentary
Database integrity	<ul style="list-style-type: none"> <i>Measures taken to ensure that data has not been corrupted by, for example, transcription or keying errors, between its initial collection and its use for Mineral Resource estimation purposes.</i> <i>Data validation procedures used.</i> 	<p>Each sample is tracked using a unique tracking number; thus, all laboratory and reporting procedures are tied back to that tracking number. Each laboratory has internal procedures to ensure data integrity. However, we have a final check on transcription and reporting errors from the labs, by comparing the results of each sample to each other. Reporting and transcription errors post lab analysis are mitigated by multiple levels of review by professional geoscientists.</p> <p>Arizona Lithium undertook a review of the historical sampling data to determine which samples were representative of the formation water and which samples should be excluded due to QA/QC concerns. The Mineral Resource QP verified the lithium concentration data by reviewing Arizona Lithium's program, confirming the reported well names and concentrations in the referenced data sources, reviewing the reasonableness of the dataset based on regional water quality, and reviewing the dataset for consistency within the Project.</p>
Site visits	<ul style="list-style-type: none"> <i>Comment on any site visits undertaken by the Competent Person and the outcome of those visits.</i> <i>If no site visits have been undertaken indicate why this is the case.</i> 	<p>The QP was involved throughout the testing program, including participating in the development of the testing program, planning the QA/QC for the water sampling, and witnessing the testing at the 101/14-33-002-12W2 well from October 19 to October 22, 2021. During the time that the QP was at the 101/14-33-002-12W2 well, four different intervals of the Duperow Formation were developed until representative samples could be collected for laboratory analysis. The QP witnessed the sample preparation, analysis, and security measures of the reservoir testing and can verify that the procedures were consistent with the description provided under 'Drill Sample Recovery'.</p>

Criteria	JORC Code explanation	Commentary
<i>Geological interpretation</i>	<ul style="list-style-type: none"> • <i>Confidence in (or conversely, the uncertainty of) the geological interpretation of the mineral deposit.</i> • <i>Nature of the data used and of any assumptions made.</i> • <i>The effect, if any, of alternative interpretations on Mineral Resource estimation.</i> • <i>The use of geology in guiding and controlling Mineral Resource estimation.</i> • <i>The factors affecting continuity both of grade and geology.</i> 	<p>The Duperow Aquifer is laterally extensive with high correlation across the resource area. Based on Arizona Lithium's sampling program and historical sampling programs, the pore space is filled with a lithium-rich brine across the Project.</p> <p>Historical data compiled by the oil and gas industry and testing completed by Arizona Lithium, suggests it is possible to withdrawal commercial quantities of brine from the Duperow Formation.</p> <p>The Mineral Resource estimate is based on the total volume of water in the net pay and the interpolated lithium concentration within the resource area.</p> <p>Approximately 71% of the Mineral Resource estimate is classified as Indicated because the lithium grade, brine volume, and transmissivity have been estimated with sufficient confidence to allow the application of modifying factors in support of mine planning and evaluation of economic viability.</p> <p>In some areas, the resource estimate is classified as Inferred due to the uncertainty in the lithium grade or the uncertainty in the formation transmissivity were considered too large to support evaluation of economic viability.</p> <p>It is expected that with continued exploration, all areas of the resource can be upgraded to Indicated or Measured classifications.</p>
<i>Dimensions</i>	<ul style="list-style-type: none"> • <i>The extent and variability of the Mineral Resource expressed as length (along strike or otherwise), plan width, and depth below surface to the upper and lower limits of the Mineral Resource.</i> 	<p>Arizona Lithium rents and leases subsurface mineral permits in Saskatchewan close to the United States border. The crown subsurface minerals are rented or leased from the Saskatchewan Provincial Government and cover 354,920 acres. Within the project area, Arizona Lithium leases varied % interest in mineral rights from Canpar Holdings Ltd. and Freehold Royalties Ltd. for a total of 26,445 net acres</p>

Criteria	JORC Code explanation	Commentary
		<p>from Canpar Holdings Ltd. and 12,968 net acres from Freehold Royalties Ltd.</p> <p>Across the Project, the top of the Duperow Formation varies in depth from 1,700 m true vertical depth (TVD) the northeast to 2,500 m TVD in the southwest. Structure elevation maps between the top of the Duperow (Seward member) and the bottom of the Duperow Formation (top of Souris River Formation) were prepared in the resource area. Between 548 wells (top Souris River Formation) and 570 wells (top Duperow Formation) were used in the interpolation of each surface. Based on the high quality of the wireline logs and the nature of the high correlation of the Duperow, the dimensions of the Mineral Resource are well constrained.</p> <p>Based on the geologic setting, regional hydraulic head mapping, and regional geochemical characterizations, the Duperow Aquifer is judged to be hydraulically continuous within, and far beyond, the Arizona Lithium resource area. The historical, and recently measured lithium concentrations in the Duperow Formation, also suggest that lithium concentrations are continuous across the Resource Area.</p>
Estimation and modelling techniques	<ul style="list-style-type: none"> <i>The nature and appropriateness of the estimation technique(s) applied and key assumptions, including treatment of extreme grade values, domaining, interpolation parameters and maximum distance of extrapolation from data points. If a computer assisted estimation method was chosen include a description of computer software and parameters used.</i> <i>The availability of check estimates, previous estimates and/or mine production records and whether the Mineral Resource estimate takes appropriate account of such data.</i> 	<p>Geological understanding of the Duperow Formation was foundational to the resource estimate. Geological mapping was completed by Arizona Lithium and interpolated structure surfaces for the intra-Duperow Formation stratigraphy were provided to Fluid Domains Inc. for construction of a three-dimensional geologic model in FEFLOW™.</p> <p>The geological data set used to construct the surfaces and the model are summarized in the following table.</p>

Criteria	JORC Code explanation	Commentary																														
	<ul style="list-style-type: none"><i>The assumptions made regarding recovery of by-products.</i><i>Estimation of deleterious elements or other non-grade variables of economic significance (e.g. sulphur for acid mine drainage characterisation).</i><i>In the case of block model interpolation, the block size in relation to the average sample spacing and the search employed.</i><i>Any assumptions behind modelling of selective mining units.</i><i>Any assumptions about correlation between variables.</i><i>Description of how the geological interpretation was used to control the resource estimates.</i><i>Discussion of basis for using or not using grade cutting or capping.</i><i>The process of validation, the checking process used, the comparison of model data to drill hole data, and use of reconciliation data if available.</i>	<p>Geological data set used to construct the surfaces and model.</p> <table><tr><th>Interval</th><th>Number of Control Points</th></tr><tr><td>Seward Member (top Duperow Formation)</td><td>570</td></tr><tr><td>Seward Evaporite</td><td>567</td></tr><tr><td>Flat Lake Evaporite</td><td>559</td></tr><tr><td>Upper Wymark C Anhydrite</td><td>567</td></tr><tr><td>Upper Wymark C</td><td>567</td></tr><tr><td>Upper Wymark B</td><td>565</td></tr><tr><td>Upper Wymark A</td><td>564</td></tr><tr><td>Middle Wymark D</td><td>562</td></tr><tr><td>Middle Wymark C</td><td>559</td></tr><tr><td>Middle Wymark B</td><td>557</td></tr><tr><td>Middle Wymark A</td><td>553</td></tr><tr><td>Lower Wymark</td><td>553</td></tr><tr><td>Saskatoon</td><td>552</td></tr><tr><td>Souris River Formation (base Duperow Formation)</td><td>548</td></tr></table> <p>Wells used in the structure and thickness mapping span from Range 30W1M to Range 25W2M and include the northern six townships in North Dakota and Township 1 to 17 in Saskatchewan.</p> <p>Thickness or structural anomalies identified in the maps were reviewed and corrected (when necessary) prior to interpolation. The interpolated surfaces represent the structure and thickness of the Duperow Formation. No Duperow Formation-aged faults have been identified.</p> <p>Isopach maps were created in GeoSCOUT™ using the kriging gridding algorithm. The isopach maps were constructed to understand and assess thickness trends within the intra-Duperow Formation stratigraphy. Any anomalies in the maps</p>	Interval	Number of Control Points	Seward Member (top Duperow Formation)	570	Seward Evaporite	567	Flat Lake Evaporite	559	Upper Wymark C Anhydrite	567	Upper Wymark C	567	Upper Wymark B	565	Upper Wymark A	564	Middle Wymark D	562	Middle Wymark C	559	Middle Wymark B	557	Middle Wymark A	553	Lower Wymark	553	Saskatoon	552	Souris River Formation (base Duperow Formation)	548
Interval	Number of Control Points																															
Seward Member (top Duperow Formation)	570																															
Seward Evaporite	567																															
Flat Lake Evaporite	559																															
Upper Wymark C Anhydrite	567																															
Upper Wymark C	567																															
Upper Wymark B	565																															
Upper Wymark A	564																															
Middle Wymark D	562																															
Middle Wymark C	559																															
Middle Wymark B	557																															
Middle Wymark A	553																															
Lower Wymark	553																															
Saskatoon	552																															
Souris River Formation (base Duperow Formation)	548																															

Criteria	JORC Code explanation	Commentary
		<p>were addressed by quality checking stratigraphic tops in the wells and shifting them accordingly.</p> <p>The structure maps of surfaces were exported from GeoSCOUT™ and imported into FEFLOW™ to determine the gross rock volume. Additionally, effective porosity maps, net pay maps, and lithium concentration maps for each intra-Duperow interval were imported into FEFLOW™ to calculate the net brine volume of the Duperow Aquifer.</p> <p>Validation of the FEFLOW generated isopach maps was achieved by comparing to the isopach maps generated in GeoSCOUT™.</p>
Moisture	<ul style="list-style-type: none"> <i>Whether the tonnages are estimated on a dry basis or with natural moisture, and the method of determination of the moisture content.</i> 	Not applicable.
Cut-off parameters	<ul style="list-style-type: none"> <i>The basis of the adopted cut-off grade(s) or quality parameters applied.</i> 	<p>The samples are representative of the aquifer in the intersected Duperow Formation with the analysis representing an average intersected grade for that interval. The cut-off grade is then and economic decision on whether to proceed with the drilling of a production well given the recovery factors and the Lithium price at the time. Lithium-rich Duperow Formation brine is widely distributed in the vicinity of the Project. The use of a cut-off grade would be based on economics of the production costs, value of the recovered lithium, and DLE efficiency. Based on this report and capital estimate, the Project would likely be economic as long as the produced brine had a concentration greater than 65 mg/L. Based on the currently available data, a fully penetrating Duperow well drilled anywhere in the Project, would have a blended lithium concentration greater than 65 mg/L. As such, the lithium grade is higher than the cutoff grade throughout the Project.</p>

Criteria	JORC Code explanation	Commentary
Mining factors or assumptions	<ul style="list-style-type: none"> Assumptions made regarding possible mining methods, minimum mining dimensions and internal (or, if applicable, external) mining dilution. It is always necessary as part of the process of determining reasonable prospects for eventual economic extraction to consider potential mining methods, but the assumptions made regarding mining methods and parameters when estimating Mineral Resources may not always be rigorous. Where this is the case, this should be reported with an explanation of the basis of the mining assumptions made. 	<p>Lithium-rich brine will be mined by pumping the water from production wells. Commercial-scale production will likely require water production rates greater than 10,000 m³/day, and as such, water well networks will be required to meet the production targets. The evaluation of potential production rates is dependent on the geologic continuity, hydraulic heads, and transmissivity of the Duperow Formation. Relatively large datasets of geologic surfaces (selected from 270 wells) and hydraulic heads (measured in published studies and onsite wells) provide a high degree of confidence in the geologic continuity and hydraulic heads of the Duperow Formation. The transmissivity of the Formation is spatially variable and has been measured at: three Arizona Lithium wells (101/14-33-002-12W2, 104/01-02-001-12W2, 141/16-20-003-12W2), three Hub City Lithium wells (111/11-02-009-12W2 13W2, 101/14-36-008-12W2 13W2, and 101/02-22-007-12W2 09W2), and in 11 drill stem tests (DSTs). Analysis of the well tests was completed using Theis (1935), Driscoll (1986), and Dougherty-Babu (1984).</p> <p>The prospects for eventual economic extraction were evaluated by considering the potential deliverability from a single water supply well and the potential deliverability from a network of water supply wells.</p> <p>Evaluation of the potential deliverability from a single water well was analysed using the Modified Moell method (Maathuis and van der Kamp, 2006). Potential deliverability from a well network was evaluated using Theis (1935) with superposition and an extended solution to MacMillan (2009). Evaluations of deliverability considered the geologic setting, linear well loss, and pressure interference between wells.</p>

Criteria	JORC Code explanation	Commentary
		A range of transmissivity values were used in the evaluation of potential deliverability from the well networks. Based on this exploration of uncertainty in the aquifer transmissivity it is believed that the finding that the Resource has a reasonable prospect for eventual economic extraction is rigorous.
Metallurgical factors or assumptions	<ul style="list-style-type: none"> <i>The basis for assumptions or predictions regarding metallurgical amenability. It is always necessary as part of the process of determining reasonable prospects for eventual economic extraction to consider potential metallurgical methods, but the assumptions regarding metallurgical treatment processes and parameters made when reporting Mineral Resources may not always be rigorous. Where this is the case, this should be reported with an explanation of the basis of the metallurgical assumptions made.</i> 	<p>Lithium will be extracted from the brine via direct lithium extraction (DLE) technology. Arizona Lithium has pilot tested two different DLE technologies, and both have produced average lithium recoveries of over 90%. Arizona Lithium has developed an ion exchange material called Plix that has been shown to recover an average of 92% of lithium from brine. This claim is based on a third-party verification report prepared in April 2021 by Coanda Research and Development. Plix is manufactured by Arizona Lithium using proprietary raw materials and reaction conditions. Testing for lithium extraction was performed at the Arizona Lithium laboratory under the supervision of Coanda Research and Development. Schlumberger Limited (SLB) commissioned a proprietary full system solution including third party DLE optimized to operate with other flow sheet components and achieved 93% recovery.</p>
Environmental factors or assumptions	<ul style="list-style-type: none"> <i>Assumptions made regarding possible waste and process residue disposal options. It is always necessary as part of the process of determining reasonable prospects for eventual economic extraction to consider the potential environmental impacts of the mining and processing operation. While at this stage the determination of potential environmental impacts, particularly for a greenfields project, may not always be well advanced, the status of early consideration of these potential environmental impacts</i> 	<p>Arizona Lithium is not aware at the date of this report of any known environmental issues that could materially impact their ability to extract lithium from the planned Project area.</p> <p>Arizona Lithium intends to place any required infrastructure within cultivated lands to help mitigate any adverse effects to populations of Species of Management Concern (SOMC) at the Project.</p> <p>Once the location of facilities is finalized, Arizona Lithium will complete the required detailed environmental surveys.</p> <p>Arizona Lithium aims to minimize surface environmental footprints by having</p>

Criteria	JORC Code explanation	Commentary
	<i>should be reported. Where these aspects have not been considered this should be reported with an explanation of the environmental assumptions made.</i>	<p>multiple production wells drilled from a common surface pad, using existing surface infrastructure to minimize disturbance, such as using existing roads to access well pads, amongst other activities.</p> <p>Based on the Hunting, Angling, and Biodiversity Information of Saskatchewan (HABISask) search, it is not believed that the Project is likely to cause any impacts to SOMC that cannot be mitigated through proper planning.</p> <p>The main waste product produced by the central processing facility will be lithium-depleted brine. It is not currently foreseen that the Project will produce any surface tailings or process waste, and all lithium depleted brine is planned to be disposed through disposal wells into underlying stratigraphy.</p>
Bulk density	<ul style="list-style-type: none"> <i>Whether assumed or determined. If assumed, the basis for the assumptions. If determined, the method used, whether wet or dry, the frequency of the measurements, the nature, size, and representativeness of the samples.</i> <i>The bulk density for bulk material must have been measured by methods that adequately account for void spaces (vugs, porosity, etc), moisture and differences between rock and alteration zones within the deposit.</i> <i>Discuss assumptions for bulk density estimates used in the evaluation process of the different materials.</i> 	<p>Wireline logs were examined to determine the lithology across the intra-Duperow Formation intervals. Density logging tools emit gamma-rays to measure electron density of the formation. These data are used to determine lithology (Photoelectric factor (PEF)) and calculate porosity. The typical data density of the bulk density log is a measurement is taken approximately every 0.1 m vertical depth. This represents several thousand sample data points per well, that throughout the area equates to several hundred thousand sample data points. The bulk density of each interval was one source of data used to interpret the average porosity over each interval.</p> <p>This exercise was completed for 279 wells.</p>
Classification	<ul style="list-style-type: none"> <i>The basis for the classification of the Mineral Resources into varying confidence categories.</i> <i>Whether appropriate account has been taken of all relevant factors (i.e., relative confidence in tonnage/grade estimations, reliability of input data, confidence in continuity of geology and metal values, quality, quantity,</i> 	<p>The Mineral Resource estimation is based on geological surfaces and Duperow Formation Aquifer quality data provided by Arizona Lithium. Historical and current lithium concentrations and geological data were incorporated into the lithium mass estimates.</p>

Criteria	JORC Code explanation	Commentary
	<p><i>and distribution of the data).</i></p> <ul style="list-style-type: none"> • <i>Whether the result appropriately reflects the Competent Person's view of the deposit.</i> 	<p>Approximately 71% of the Mineral Resource estimate is classified as Indicated because the lithium grade, brine volume, and transmissivity have been estimated with sufficient confidence to allow the application of modifying factors in support of mine planning and evaluation of economic viability.</p> <p>In some areas, the resource estimate is classified as Inferred because the uncertainty in the lithium grade or the uncertainty in the formation transmissivity were considered too large to support evaluation of economic viability.</p> <p>It is expected that with continued exploration, all areas of the resource can be upgraded to Indicated or Measured classifications.</p>
Audits or reviews	<ul style="list-style-type: none"> • <i>The results of any audits or reviews of Mineral Resource estimates.</i> 	<p>No detailed audits have been completed.</p>
Discussion of relative accuracy/confidence	<ul style="list-style-type: none"> • <i>Where appropriate a statement of the relative accuracy and confidence level in the Mineral Resource estimate using an approach or procedure deemed appropriate by the Competent Person. For example, the application of statistical or geostatistical procedures to quantify the relative accuracy of the resource within stated confidence limits, or, if such an approach is not deemed appropriate, a qualitative discussion of the factors that could affect the relative accuracy and confidence of the estimate.</i> • <i>The statement should specify whether it relates to global or local estimates, and, if local, state the relevant tonnages, which should be relevant to technical and economic evaluation. Documentation should include assumptions made and the procedures used.</i> • <i>These statements of relative accuracy and confidence of the estimate</i> 	<p>The Mineral Resource estimation has been performed according to the requirements of the CIM Best Practice Guidelines for Resource and Reserve Estimation for Lithium Brines (2012), CIM Definitions Standard (2014), Estimation of Mineral Resources and Mineral Reserves Best Practice Guidelines (2019), the CIM NI 43-101F1 (2011), and the Australian Code for Reporting of Exploration Results, Mineral Resources and Ore Reserves (2012).</p> <p>Additional data and modelling will be required to further characterize the Mineral Resource. The Mineral Resource values have been rounded to reflect that they are estimates.</p> <p>There has been sufficient exploration to define most of the Resource as an Indicated Mineral Resource.</p> <p>The estimate of Mineral Resource may be materially affected by environmental, permitting, legal, title, taxation, sociopolitical, marketing, or other relevant issues, but at present there are none known</p>

Criteria	JORC Code explanation	Commentary
	<i>should be compared with production data, where available.</i>	which could adversely affect the Mineral Resources estimated above.

Section 4 Estimation and Reporting of Ore Reserves

(Criteria listed in section 1, and where relevant in sections 2 and 3, also apply to this section.)

Criteria	JORC Code explanation	Commentary
Mineral Resource estimate for conversion to Ore Reserves	<ul style="list-style-type: none"> <i>Description of the Mineral Resource estimate used as a basis for the conversion to an Ore Reserve.</i> <i>Clear statement as to whether the Mineral Resources are reported additional to, or inclusive of, the Ore Reserves.</i> 	<p>The Mineral Resource estimate summarized in Table 1 is divided into two parts that are additional to each other. The Inferred Resource is 340,000 tonnes of elemental lithium and the Indicated Resource is 850,000 tonnes of elemental lithium.</p> <p>Modifying factors were applied to the entire Indicated Resource of 850,000 tonnes so that the 850,000 tonnes of Probable Reserve include the Indicated Resource mass.</p>
Site visits	<ul style="list-style-type: none"> <i>Comment on any site visits undertaken by the Competent Person and the outcome of those visits.</i> <i>If no site visits have been undertaken indicate why this is the case.</i> 	<p>Brine Sampling Site Visits:</p> <p>The QP was involved throughout the testing program including participating in the development of the testing program, planning the QA/QC for the water sampling, and witnessing the testing at the 101/14-33-002-12W2 well from October 19 to October 22, 2021. During the time that the QP was at the 101/14-33-002-12W2 well, four different intervals of the Duperow Formation were developed until representative samples could be collected for laboratory analysis. The QP witnessed the sample preparation, analysis and security measures of the reservoir testing and can verify that the procedures were consistent with the description provided under 'Drill Sample Recovery'.</p>
Study status	<ul style="list-style-type: none"> <i>The type and level of study undertaken to enable Mineral Resources to be converted to Ore Reserves.</i> <i>The Code requires that a study to at least Pre-Feasibility Study level has</i> 	<p>To date, a Prefeasibility Study (PFS) has been completed by Samuel Engineering with support from Sproule and Arizona Lithium, in order to produce this report.</p> <p>Exploration, geology, resources, and reserve work was performed by Fluid</p>

Criteria	JORC Code explanation	Commentary
	<p><i>been undertaken to convert Mineral Resources to Ore Reserves. Such studies will have been carried out and will have determined a mine plan that is technically achievable and economically viable, and that material Modifying Factors have been considered.</i></p>	<p>Domains with input from Sproule and Arizona Lithium.</p> <p>Processing, estimating and economical analysis was performed by Samuel Engineering. This study included an AACE Class 4 capital estimate based on budgetary quotations, site plan, mechanical and electrical equipment lists, flowsheets and mass balance. The proposed process, as described in detail in the relevant section below, has been determined to be viable for production a saleable lithium carbonate product. Wellfield composition has been tested extensively and found to be consistent in composition with the DLE and further concentration test work proving the feasibility of the proposed process.</p> <p>The project is considered economically viable with the conservative approach taken and the PFS economics and costs are included in the relevant sections of this report.</p>
<p><i>Cut-off parameters</i></p>	<ul style="list-style-type: none"> <i>The basis of the cut-off grade(s) or quality parameters applied.</i> 	<p>The samples are representative of the aquifer in the intersected Duperow Formation with the analysis representing an average intersected grade for that interval. The cut-off grade is then an economic decision on whether to proceed with the drilling of a production well given the recovery factors and the Lithium price at the time. Lithium-rich Duperow Formation brine is widely distributed in the vicinity of the Project. The use of a cut-off grade would be based on economics of the production costs and the value of the recovered lithium. Based on Arizona Lithium's initial cost estimate work, the Project would likely be economic as long as the produced brine had a concentration greater than 65 mg/L. Based on the currently available data, a fully penetrating Duperow well drilled anywhere in the Project, would have a blended lithium concentration greater than 65 mg/L. As such, the lithium grade is higher than the cutoff grade throughout the Project.</p>

Criteria	JORC Code explanation	Commentary
Mining factors or assumptions	<ul style="list-style-type: none"> <i>The method and assumptions used as reported in the Pre-Feasibility or Feasibility Study to convert the Mineral Resource to an Ore Reserve (i.e. either by application of appropriate factors by optimisation or by preliminary or detailed design).</i> <i>The choice, nature and appropriateness of the selected mining method(s) and other mining parameters including associated design issues such as pre-strip, access, etc.</i> <i>The assumptions made regarding geotechnical parameters (e.g. pit slopes, stope sizes, etc), grade control and pre-production drilling.</i> <i>The major assumptions made and Mineral Resource model used for pit and stope optimisation (if appropriate).</i> <i>The mining dilution factors used.</i> <i>The mining recovery factors used.</i> <i>Any minimum mining widths used.</i> <i>The manner in which Inferred Mineral Resources are utilised in mining studies and the sensitivity of the outcome to their inclusion.</i> <i>The infrastructure requirements of the selected mining methods.</i> 	<p>Across Arizona Lithium's permits, Lithium rich brines are present 1700m to 2600m below ground surface. Because of the depth, the lithium rich brine will be mined by pumping the water from production wells rather than excavation.</p> <p>Commercial scale production is planned for water production rates greater than 10,000 m³/day at each pad and as such, water well networks will be required at each pad to meet the production targets. The evaluation of potential production rates is dependent on the geologic continuity, hydraulic heads, and transmissivity of the Duperow Formation. Relatively large datasets of geologic surfaces (selected from 270 wells) and hydraulic heads (measured in published studies and onsite wells), provide a high degree of confidence in the geologic continuity and hydraulic heads of the Duperow Formation. The transmissivity of the Formation is spatially variable has been measured at: three Arizona Lithium wells (101/14-33-002-12W2, 104/01-02-001-12W2, and 141/16-20-003-12W2); three Hub City Lithium wells (111/11-02-009-12W2 13W2, 101/14-36-008-12W2 13W2, and 101/02-22-007-12W2 09W2); and in 11 drill stem tests (DSTs). Analysis of the well tests was completed using Theis (1935), Driscoll (1986), and Dougherty-Babu (1984).</p> <p>Evaluation of the potential deliverability from a well network was evaluated using FEFLOW (DHI 2022) a finite element numerical model of groundwater flow. Evaluations of deliverability considered the geologic setting, linear well loss, and pressure interference between wells.</p> <p>Since elevated concentrations of lithium extend well beyond the production pads, no dilution factor was considered in the production planning.</p> <p>A recovery factor of 77% was used on the when calculating the brine water demand.</p>

Criteria	JORC Code explanation	Commentary
		<p>In other words, the PFS was designed to produce 130% of the lithium-rich brine that is required for a 6,000 tonnes LCE per year project.</p> <p>Areas of Inferred Mineral Resources do not affect the mining factors used in the PFS.</p> <p>The selected well network requires a total of 13 supply wells drilled across the full thickness of the Duperow Formation and associated infrastructure including: 13 ESPs, three well pads, water piping, and electrical infrastructure to supply power to the ESPs.</p>
Metallurgical factors or assumptions	<ul style="list-style-type: none"> • <i>The metallurgical process proposed and the appropriateness of that process to the style of mineralisation.</i> • <i>Whether the metallurgical process is well-tested technology or novel in nature.</i> • <i>The nature, amount and representativeness of metallurgical test work undertaken, the nature of the metallurgical domaining applied and the corresponding metallurgical recovery factors applied.</i> • <i>Any assumptions or allowances made for deleterious elements.</i> • <i>The existence of any bulk sample or pilot scale test work and the degree to which such samples are considered representative of the orebody as a whole.</i> • <i>For minerals that are defined by a specification, has the ore reserve estimation been based on the appropriate mineralogy to meet the specifications?</i> 	<p>The process proposed consists of pumping feed brine from producer wells to the processing facility where brine is first filtered and subsequently processed through the Direct Lithium Extraction (DLE) system to concentrate lithium while rejecting impurities. Concentrated brine is forwarded to softening while depleted brine is sent to reinjection after a heat capture exchanger. The concentrated brine is further concentrated and purified in via softening, clarification, and ion exchange to achieve a concentration increase of ~16 times. The concentrated lithium chloride brine is heated and reacted with a soda ash solution in order to precipitate a lithium carbonate solution which is then dewatered and dried to produce a saleable 99 wt. %+ lithium carbonate product.</p> <p>The process is a novel configuration of proven technologies. The DLE process has been used commercially in South America and China; however, has not yet been commercially implemented in North America. The technology has been pilot tested extensively across a range of brine and surface pond applications with a wide range of lithium and salt ion concentrations and proven to be viable across many sources of brine. RO and CFRO are proven technologies both for water processing as well as lithium concentration. The lithium carbonate reaction, as well as dewatering,</p>

Criteria	JORC Code explanation	Commentary
		<p>drying and loading of lithium carbonate are all commercially proven processes and carry minimal risk.</p> <p>The only known deleterious elements are generally salt ions present in the brine discovered in testing that will be mostly rejected by DLE with the remainder subsequently removed in the softening and IX process. Brine testing to date has not shown any other deleterious elements, but each well pad processing plant will also have media filters at the feed to the plant to account for any suspended solids material that could be present.</p> <p>Arizona Lithium has pilot tested two different DLE technologies and both have produced average lithium recoveries of over 90%. The second DLE technology tested, and the basis for the prefeasibility study, is technology developed by ILiAD Technologies, LLC, a subsidiary of Energy Source Minerals (ESM). The ILiAD DLE testing was conducted by ILiAD Technologies at their testing facility in California in March 2023, while the downstream post-processing testing was conducted by Gradiant at their Massachusetts testing facility in June 2023. The approach utilized a proprietary full system solution, including DLE and counter-flow reverse osmosis (CFRO), optimized to operate with other flow sheet components, and achieved 93% recovery for DLE.</p> <p>The overall lithium recovery used as the basis of design for the prefeasibility study is 90% which provides a conservative safety margin compared to the measured overall recovery of 93% during pilot testing.</p> <p>In June 2024, Lithium carbonate was produced at Saltworks Technologies Inc., from ILiAD DLE eluate through Saltworks' concentrate refine convert (CRC) technology and purity was validated by a 3rd party laboratory, SGS in Canada.</p>

Criteria	JORC Code explanation	Commentary
Environmental	<ul style="list-style-type: none"> <i>The status of studies of potential environmental impacts of the mining and processing operation. Details of waste rock characterisation and the consideration of potential sites, status of design options considered and, where applicable, the status of approvals for process residue storage and waste dumps should be reported.</i> 	<p>Arizona Lithium is not aware at the date of this report of any known environmental issues that could materially impact their ability to extract lithium from the planned Project area.</p> <p>Arizona Lithium intends to place any required infrastructure within cultivated lands to help mitigate any adverse effects to populations of Species of Management Concern (SOMC) at the Project.</p> <p>Once the well pad locations are finalized, Arizona Lithium will complete the required detailed environmental surveys.</p> <p>Arizona Lithium aims to minimize surface environmental footprints by having multiple production wells drilled from a common surface pad, using existing surface infrastructure to minimize disturbance, such as using existing roads to access well pads, amongst other activities.</p> <p>Based on the Hunting, Angling and Biodiversity Information of Saskatchewan (HABISask) search, it is not believed that the Project is likely to cause any impacts to SOMC that cannot be mitigated through proper planning.</p> <p>The main waste product produced by the processing facilities will be lithium depleted brine. It is not foreseen that the Project will produce any surface tailings or process waste, and all lithium depleted brine is planned to be disposed through disposal wells into the Madison Group.</p>
Infrastructure	<ul style="list-style-type: none"> <i>The existence of appropriate infrastructure: availability of land for plant development, power, water, transportation (particularly for bulk commodities), labour, accommodation; or the ease with which the infrastructure can be provided, or accessed.</i> 	<p>The Project is covered by a dense infrastructure of roads, railways and transmission lines. Prairie Lithium's facilities are 40 km west of the city of Estevan and 60 km south of Weyburn; each city hosts a population of ~11,000. Skilled labor, oil and gas services and equipment are available in these cities. The Project is located close to the year-round, accessible Canada-USA border crossing with access to the North American road and rail network.</p>

Criteria	JORC Code explanation	Commentary
		<p>Highways 18, 35 and 39 run through the Project. Secondary and primary roads are well maintained given the heavy traffic associated with the agriculture and oil industries. There is a grid of north-south secondary roads every mile and east-west secondary roads every two miles. Seasonal weight bans are implemented on secondary roads in the spring months. Prairie Lithium's CPF will have year-round access.</p> <p>Access to Estevan is by ground or air transportation. Estevan airport is at an elevation of 572 m above mean sea-level (amsl). Regina is approximately 200 km northwest of the Project and hosts an international airport.</p> <p>A former Canadian Pacific Railway traverses the Project (east-west) and runs through the towns of Torquay and Estevan, along which there is a loading terminal at Bromhead at 14-08-003-13W2 which is approximately 60 km west of Estevan, with a capacity for 80 railcars in a spur line called Long Creek Railroad. The railroad is now locally owned and hosts grain and fracking sand for the petroleum activity. The main loading terminal for Prairie Lithium will be located at Estevan. The main line Canadian Pacific Weyburn railroad runs through the towns of Weyburn and Estevan. There is also a Canadian National railroad located just east of Estevan.</p> <p>Numerous oil wells have been drilled within and surrounding the Project resulting in an expansive network of pipelines, fluid processing facilities and a dense infrastructure access coverage. A network of oil, gas and water handling facilities occur throughout the region. Access has been acquired to a pre-existing wellbore in October 2021 (well 104/01-02-001-12W2) for testing of the lithium content and deliverability.</p>
Costs	<ul style="list-style-type: none"> <i>The derivation of, or assumptions</i> 	The capital cost estimate is based on historical information for the site,

Criteria	JORC Code explanation	Commentary
	<p><i>made, regarding projected capital costs in the study.</i></p> <ul style="list-style-type: none"> • <i>The methodology used to estimate operating costs.</i> • <i>Allowances made for the content of deleterious elements.</i> • <i>The source of exchange rates used in the study.</i> • <i>Derivation of transportation charges.</i> • <i>The basis for forecasting or source of treatment and refining charges, penalties for failure to meet specification, etc.</i> • <i>The allowances made for royalties payable, both Government and private.</i> 	<p>preliminary testwork, preliminary block flow diagrams and flowsheets, budgetary equipment quotations, and conceptual layouts for the plants.</p> <p>For the capital cost of the processing facilities, a “distributed percentage factoring” technique has been employed to develop an estimate at this preliminary stage where there is a lack of design data and specific requirements from which to base costs.</p> <p>In factored estimates, the supply cost of the mechanical equipment for the facilities is used as the basis for calculating the overall cost of the facility. Various percentages of the equipment costs are then applied to obtain values for each of the prime commodity accounts, which include earthwork, concrete, structural steel, mechanical, piping, electrical and instrumentation.</p> <p>The basis of mechanical equipment costs used in this estimate include budgetary equipment pricing from vendors, in-house historical data, and costs from other databases. Costs for the DLE equipment was provided by Energy Source Minerals (ESM). Costs for the lithium concentration plant was provided by Gradiant Corporation (Gradiant).</p> <p>The distributive percentage factoring is applied to both the labor for installation as well as for the cost of materials within each prime commodity account.</p> <p>All mechanical equipment is assumed to be procured by either the Engineer or the Owner and provided “free issue” to the construction contractor for installation; thereby avoiding any third-party markup.</p> <p>Costs assume that equipment and materials will be purchased on a competitive basis, and installation contracts will be awarded in well-defined packages.</p>

Criteria	JORC Code explanation	Commentary
		<p>In addition to process facility costs derived by distributed percentage factoring, other costs, including well (producer, injection, and water) drilling and pumping costs and Owner's cost are provided by Arizona Lithium.</p> <p>Operating costs have been derived from factors and quotations. All reagents have been quoted by local suppliers, while natural gas and electricity were derived from local utility pricing and estimated consumption based on mass balances. Waste handling and leasing costs have been provided by Arizona Lithium from quotations with labor costs via internal forecasting. Allowances for Selling, General, and Administrative (SG&A) costs, maintenance and operating supply costs are assumed as a factor of operating cost subtotal. Operating costs for the project with three well pads operational at nominal production rates is \$2,819 per tonne of well pad product. Total All-In Sustaining Cost including Crown Royalty, DLE licensing fee, and sustaining CAPEX is \$5,121 per tonne of well pad product.</p> <p>Significant well brine testing has been performed suggesting there will be no deleterious elements outside of the already accounted for impurities. These will be removed as part of processing and the comments have been approved for acceptance at a local landfill with costs accounted for in operational expenses.</p> <p>Costs are reported in United States Dollars (USD) and were used wherever possible while getting quotations. Where Canadian dollars were provided on quotations for equipment and utilities, a conversion rate of 0.74 USD to 1 CAD.</p> <p>Transportation charges for waste sludge to landfill have been accounted for by quotation with material/equipment freight accounted for as a factor of material and</p>

Criteria	JORC Code explanation	Commentary
		<p>equipment costs.</p> <p>iLiMarkets was engaged to provide a report to account for the costs what will be incurred by offtakers to convert the product to battery grade lithium carbonate and this charge has been accounted for in the sale price of the product for financial modeling. As there will be further conversion necessary, there is no defined specification for the product until offtake agreements have been signed.</p> <p>Two allowances for royalties have been accounted for in the financial model cash flow analysis. The Crown Royalty, paid pursuant to The Crown Minerals Act, accounts for 3% of gross revenue. Secondly, a DLE licensing royalty is accounted for as a discretionary percentage of gross revenue.</p>
Revenue factors	<ul style="list-style-type: none"> <i>The derivation of, or assumptions made regarding revenue factors including head grade, metal or commodity price(s) exchange rates, transportation and treatment charges, penalties, net smelter returns, etc.</i> <i>The derivation of assumptions made of metal or commodity price(s), for the principal metals, minerals and co-products.</i> 	<p>As the lithium carbonate product being produced is not considered battery grade by generally accepted criteria, iLiMarkets was engaged to provide the economic value of the intermediate product by providing costs, and subsequent reduction of sale price, to produce battery grade lithium hydroxide.</p> <p>The lithium carbonate composition was provided to iLi Markets and used as the basis for feed to a downstream lithium carbonate refinery. Prices per tonne for water, carbon dioxide, natural gas (to produce steam for crystallization), reagents, power, labor and maintenance were calculated based on typical refining processes and yield to produce battery grade lithium carbonate. The sale price was provided by Global Lithium LLC.</p>
Market assessment	<ul style="list-style-type: none"> <i>The demand, supply and stock situation for the particular commodity, consumption trends and factors likely to affect supply and demand into the future.</i> <i>A customer and competitor analysis along with the identification of likely</i> 	<p>Market assessment was provided by Global Lithium LLC.</p> <p>The supply of lithium chemicals is expected to be tight for the remainder of the decade and likely longer. Demand is expected to exceed total supply more often than not in</p>

Criteria	JORC Code explanation	Commentary
	<p><i>market windows for the product.</i></p> <ul style="list-style-type: none"> • <i>Price and volume forecasts and the basis for these forecasts.</i> • <i>For industrial minerals the customer specification, testing and acceptance requirements prior to a supply contract.</i> 	<p>this time period as well. The fastest growing lithium chemicals will be battery grade quality hydroxide and carbonate that are primarily produced by hard rock and brine sources, with sedimentary asset production expected later this decade, although battery manufacturer's rigorous and individual demands for product make technical products viable for offtakers with purification plants. Lithium supply from recycling is not expected to be even 10% of supply until later in the 2030s.</p> <p>Battery related use makes up approximately 60% of the market, primarily due to growing demand for electric transportation. By 2030, it is expected that 90% of demand will be related to lithium-ion batteries in electric transportation and energy storage. Asia will remain the largest market for lithium chemicals for the remainder of the decade with North America expected to become the second largest market as government continues to take steps to support growth of the domestic electric vehicle (EV) market.</p> <p>The two fastest growing lithium chemicals will be battery quality hydroxide and carbonate through the remainder of this decade. Lithium hydroxide is primary used in longer range EV batteries requiring high nickel content while carbonate is favored in lower capacity, less expensive EV batteries, electric buses, and energy storage systems. Although it is difficult to accurately forecast the exact future mix of cathode materials and whether carbonate or hydroxide will be required; the diversity of the battery market will likely result in a continued tight market for both forms of lithium chemicals as well as technical grade products that can be refined by offtakers well into the next decade.</p> <p>Currently Western Australia is the largest global source of lithium values and is on track to supply over 40% of the total global</p>

Criteria	JORC Code explanation	Commentary
		<p>LCEs in 2023 mostly in the form of spodumene concentrate converted in China to lithium chemicals. Over the next several years, Australia will convert increasingly significant volumes of their spodumene into lithium chemicals forcing China to seek feedstock elsewhere.</p> <p>Chile is the second largest lithium producer supplying approximately 30% of LCEs globally. While China is the largest producer of lithium chemicals globally, most of their output is from imported feedstock. China is currently the third largest producer of LCEs from low quality domestic brine and hardrock resources. Argentina is the fourth largest producer of lithium values globally.</p> <p>In the next five years, Argentina may move from the fourth largest producer to third position and possibly second position behind Australia by 2030 based on the number of brine projects in development. Brazil, Africa, Canada, and the US are also expected to become significant LCE producers by 2030.</p> <p>In recent years, the lithium price has been volatile, as low as \$8/kg in 2018 to China spot process at \$80/kg. It is expected that large contract pricing will trade well above current cost curves in a range from high \$20s/kg to \$40/kg through 2030 as demand is assumed to continue to exceed supply. For purposes of estimating new projects, Global Lithium recommends a conservative approach using a price below the forecast high end of cost curves leading room for significant upside, with a final recommendation of \$21,000 per tonne.</p> <p>At this stage in the development of the Prairie Project, Arizona Lithium does not intend to make battery quality lithium chemicals at the well pad. The operating strategy at each well pad facility is to</p>

Criteria	JORC Code explanation	Commentary
		<p>produce the highest quality lithium chemical at the lowest environmental impact and cost. The high quality of the Prairie Project brine, combined with the latest advances in DLE and CFRO technology, results in the production of a near battery quality product; however, additional purification is necessary to achieve the specification required by most cathode and battery manufacturers. As a result of this strategy, a discount to the pricing is required to represent the value that must be added to the well pad lithium product by others further down the supply chain. In this regard, South American advisory firm iLi Markets assisted by Ad-Infinity, examined the Prairie Project well pad product and provided a formula for determining an appropriate discount. Using a conventional lithium carbonate flowsheet with bicarbonation, ion exchange, and crystallization it was determined that a base conversion charge of \$2,606 per tonne LCE was appropriate given the following assumptions:</p> <ul style="list-style-type: none"> • Regional pricing for electricity and reagents • The converter is the end-user (no profit margin included for 3rd party converter) • No transportation cost included from conversion facility to battery producer • Brownfield or existing conversion facility <p>Using the Global Lithium conservative price of \$21,000 per tonne, the netback price for the lithium product produced at each well pad is \$18,394 per tonne.</p>
Economic	<ul style="list-style-type: none"> • <i>The inputs to the economic analysis to produce the net present value (NPV) in the study, the source and confidence of these economic inputs including estimated inflation, discount rate, etc.</i> • <i>NPV ranges and sensitivity to variations in the significant</i> 	<p>The economic results presented in this report are based on a 100% equity basis and non-inflated costs (4th Quarter 2023). SE developed the operating and capital costs of the facility in US dollars with an accuracy of +/- 30%. The estimate is built on a factored basis with over 90% of the equipment bid within the quarter and</p>

Criteria	JORC Code explanation	Commentary
	<i>assumptions and inputs.</i>	consists with a 15% contingency allowance. Base case economic numbers utilize a discount rate of 8%. See NPV Ranges and Sensitivity to Variations in Table A-2 in Appendix 3.
Social	<ul style="list-style-type: none"> <i>The status of agreements with key stakeholders and matters leading to social licence to operate.</i> 	<p>Arizona Lithium has surface leases in place with landowners at 5 locations. The surface lease allows Arizona Lithium access to their wells.</p> <p>Arizona Lithium held a townhall in Estevan, Saskatchewan on April 4th, 2023. The public was invited to come and ask questions to learn more about Arizona Lithium's lithium project in the region. There were no community concerns raised at the event.</p>
Other	<ul style="list-style-type: none"> <i>To the extent relevant, the impact of the following on the project and/or on the estimation and classification of the Ore Reserves:</i> <i>Any identified material naturally occurring risks.</i> <i>The status of material legal agreements and marketing arrangements.</i> <i>The status of governmental agreements and approvals critical to the viability of the project, such as mineral tenement status, and government and statutory approvals. There must be reasonable grounds to expect that all necessary Government approvals will be received within the timeframes anticipated in the Pre-Feasibility or Feasibility study. Highlight and discuss the materiality of any unresolved matter that is dependent on a third party on which extraction of the reserve is contingent.</i> 	<p>No material naturally occurring risks have been identified. Climate conditions have not affected oil and gas development in the past in the area.</p> <p>Current legal agreements include:</p> <ul style="list-style-type: none"> DEEP agreement, which is summarized in Section 2 of this table and found in Appendix 1 Canpar/Freehold Agreement, which is summarized in Section 2 of this table and found in Appendix 1 <p>There are reasonable grounds to expect that all necessary Government approvals will be received within the expected timeframe, as evidenced by:</p> <ul style="list-style-type: none"> History of decades of oil and gas production (similar Mining Methods to producing lithium-rich brines) Regulations for well approvals and lithium brine project approvals are established. Arizona Lithium has received approvals to produce lithium from 4 wells to date: <ul style="list-style-type: none"> 14-33-002-12W2 (2021) 01-02-001-12W2 (2021)

Criteria	JORC Code explanation	Commentary
		<ul style="list-style-type: none"> ○ 16-20-003-12W2 (2022) ○ 01-15-002-12W2 (2023) – well to be drilled <p>There are currently no unresolved matters that are dependent on a third party on which extraction of the reserve is contingent.</p> <p>Government approvals follow that under the Saskatchewan Mineral Tenure Regulations. Well Licence approval can be granted through the Saskatchewan Integrated Resource Information System (IRIS). The Ministry of Energy and Resource (MER) has indicated that lithium extraction operations will be administered via a project application. After finalizing the review, MER will issue a minister's order and approval letter, then generate a project authorization in IRIS</p>
Classification	<ul style="list-style-type: none"> • <i>The basis for the classification of the Ore Reserves into varying confidence categories.</i> • <i>Whether the result appropriately reflects the Competent Person's view of the deposit.</i> • <i>The proportion of Probable Ore Reserves that have been derived from Measured Mineral Resources (if any).</i> 	<p>The Mineral Resource estimation is based on geological surfaces and Duperow Formation Aquifer data provided by Arizona Lithium and historical data.</p> <p>Approximately 71% of the Mineral Resource estimate is classified as Indicated because the lithium grade, brine volume, and transmissivity have been estimated with sufficient confidence to allow the application of modifying factors in support of mine planning and evaluation of economic viability at a PFS level.</p> <p>In some areas, the resource estimate is classified as Inferred because the uncertainty in the lithium grade or the uncertainty in the formation transmissivity were considered too large to support the evaluation of economic viability.</p> <p>It is expected that with continued exploration all areas of the resource can be upgraded to Indicated or Measured classifications.</p> <p>There is a high confidence in the aquifer properties in the vicinity of the 101/14-33-002-12W2 and 101/16-20-003-12W2 wells,</p>

Criteria	JORC Code explanation	Commentary
		<p>however, since the performance of the production well networks extend beyond the area directly measured by the 101/14-33-002-12W2 and 101/16-20-003-12W2 wells, the only a Probable Reserve classification was applied to the Indicated Resource.</p> <p>The Probable Reserve classification appropriately reflects the Competent Person's view of the deposit.</p> <p>None of the Probable Ore Reserves were derived from Measured Mineral Resources.</p>
Audits or reviews	<ul style="list-style-type: none"> <i>The results of any audits or reviews of Ore Reserve estimates.</i> 	No detailed audits have been completed.
Discussion of relative accuracy/ confidence	<ul style="list-style-type: none"> <i>Where appropriate a statement of the relative accuracy and confidence level in the Ore Reserve estimate using an approach or procedure deemed appropriate by the Competent Person. For example, the application of statistical or geostatistical procedures to quantify the relative accuracy of the reserve within stated confidence limits, or, if such an approach is not deemed appropriate, a qualitative discussion of the factors which could affect the relative accuracy and confidence of the estimate.</i> <i>The statement should specify whether it relates to global or local estimates, and, if local, state the relevant tonnages, which should be relevant to technical and economic evaluation. Documentation should include assumptions made and the procedures used.</i> <i>Accuracy and confidence discussions should extend to specific discussions of any applied Modifying Factors that may have a material impact on Ore Reserve viability, or for which there are remaining areas of uncertainty at the current study stage.</i> 	<p>The Mineral Resource estimation has been performed according to the requirements of the CIM Best Practice Guidelines for Resource and Reserve Estimation for Lithium Brines (2012), CIM Definitions Standard (2014), Estimation of Mineral Resources and Mineral Reserves Best Practice Guidelines (2019), the CIM NI 43-101F1 (2011), and the Australian Code for Reporting of Exploration Results, Mineral Resources and Ore Reserves (2012).</p> <p>The confidence of the Ore Reserve estimate is sensitive to the uncertainty of the aquifer transmissivity and lithium grade.</p> <p>While the geologic and hydrogeologic properties of the Resource are sufficiently understood to allow for the interpolation between control points, there are two areas of the model domain where the gradient of lithium concentrations, or the gradient in measured transmissivities, is known to be steep and is relatively uncertain. These areas were not upgraded to Indicated Resource and were not converted to a Probable Reserve.</p> <p>The lithium grade and transmissivity of the Duperow Formation varies laterally across the Indicated Resource area. A range of lithium concentrations and aquifer</p>

Criteria	JORC Code explanation	Commentary
	<ul style="list-style-type: none"> <i>It is recognised that this may not be possible or appropriate in all circumstances. These statements of relative accuracy and confidence of the estimate should be compared with production data, where available.</i> 	<p>transmissivities were therefore evaluated for prospects of eventual economic extraction. This evaluation process tested multiple values of transmissivity and lithium grade with analytical solutions (Theis 1935, and an extended version of MacMillan 2009) to determine whether the deliverability of well networks was amenable to economic extraction.</p> <p>This work effectively explored the uncertainty of the Probable Reserve classification and supports the conversion of the Indicated Resource to a Probable Reserve.</p> <p>The estimate of Mineral Reserve may be materially affected by environmental, permitting, legal, title, taxation, sociopolitical, marketing, or other relevant issues, but at present there are none known which could adversely affect the Mineral Resources estimated above.</p>

Appendix 1: Subsurface Mineral Permits

Summary of Arizona Lithium's subsurface mineral permits and leases.

Permit / Lease / File No.	Surface Area (Ha)	Disposition Area (Ha)	Offering Date	Annual Cost (CAD \$)	MWR (CAD \$)	Restrictions	Stratigraphic Interval	Lessor / AMI (In / Out)
SMP002	1553.82	1553.82	4/23/2019	3,107.64	577,000	LS	Base Three Forks Group to top Precambrian	DEEP / In
SMP003	1299.29	1299.29	12/17/2019	12,538.00	488,000	PNG	Base Three Forks Group to top Precambrian	PLi / Out
SMP007	1292.16	1292.16	12/17/2019	2,584.32	485,000	PNG	Top Madison Group to Top Precambrian	PLi / Out
SMP008	258.38	258.38	4/20/2020	516.76	97,000			DEEP / In
SMP021	1742.94	1656.78	4/20/2020	3,313.55	654,000			
SMP022	257.95	257.95	4/20/2020	515.90	97,000		Top Madison Group to Top Winnipeg Formation	PLi / In
SMP023	1547.57	1547.57	4/20/2020	3,095.13	581,000			
SMP010	9295.42	8842.41	4/20/2020	17,684.82	3,485,000		Top Madison Group to Top Winnipeg Formation	
SMP011	1293.55	1293.55	4/20/2020	2,587.10	485,000		Top Madison Group to Top Precambrian - except E/2 28-3-12W2, 29-3-12W2 and 32-3-12W2 Top Madison Group to Top Winnipeg Formation	PLi / In
SMP044	3872.15	3807.55	4/19/2021	7,615.10	1,475,000	3KM, PNG	Top Madison Group to Precambrian	PLi / Out
SMP046	128.76	128.76	4/19/2021	257.51	50,000		Top Madison Group to Precambrian; except W/2 and NE-6-2-10 W2 top Madison Group to base Three Forks Group	DEEP / In
SMP047	258.21	258.21	4/19/2021	516.43	99,000			
SMP048	1227.21	1173.33	4/19/2021	2,346.67	468,000		Top Madison Group to Precambrian	PLi / In
SMP049	258.38	258.38	4/19/2021	516.75	99,000		Top Madison Group to Precambrian; except NW-6-4-11 W2, S/2-10-4-11 W2, NE-26-3-12 W2 and 36-3-12 W2 top Madison Group to top Winnipeg Formation	
SMP050	2252.20	2252.20	4/19/2021	4,504.40	858,000		Top Madison Group to Precambrian	PLi / Out
SMP056	2266.02	2265.84	4/19/2021	4,531.68	863,000		Top Madison Group to Precambrian; except 23-6-10 W2 top Madison Group to Top Winnipeg Formation	PLi / Out
SMP058	1876.44	1876.44	4/19/2021	3,752.87	715,000		Top Madison Group to Precambrian	PLi / In
SMP059	2643.97	2539.88	4/19/2021	5,079.76	1,007,000		Top Madison Group to Precambrian; except 14-2-12 W2 top Madison Group to Precambrian	
SMP061	512.46	512.46	4/19/2021	1,024.92	196,000		Top Madison Group to Precambrian	PLi / In
SMP063	1738.78	1738.78	4/19/2021	3,477.55	663,000		Top Madison Group to Precambrian	
SMP064	1809.08	1809.08	4/19/2021	3,618.16	689,000		Top Madison Group to Precambrian	PLi / In
SMP065	1810.75	1810.75	4/19/2021	3,621.49	690,000		Top Madison Group to Precambrian	
SMP066	1879.20	1815.16	4/19/2021	3,630.32	716,000		Top Madison Group to Precambrian	PLi / In
SMP067	2581.51	2581.51	4/19/2021	5,163.02	984,000		Top Madison Group to Precambrian; except 22-2-11 W2, 28-2-11 W2, 29-2-11 W2, 30-2-11 W2 and 32-2-11 W2 top Madison Group to Precambrian	
SMP068	2828.16	2828.13	4/19/2021	5,656.26	1,078,000		Top Madison Group to Precambrian; except 22-3-12 W2, 23-3-12 W2 and SE -24-3-12 W2 top Madison Group to top Winnipeg Formation	PLi / Out
SMP070	2388.55	2018.87	4/19/2021	4,037.73	910,000		Top Madison Group to Precambrian	PLi / In
SMP078	3157.57	1803.83	4/19/2021	3,607.66	1,203,000		Top Madison Group to Precambrian	
SMP079	1410.74	1410.74	4/19/2021	2,821.47	538,000		Top Madison Group to Precambrian	PLi / In
SMP082	2834.84	2834.84	4/19/2021	5,669.68	1,080,000		Top Madison Group to Precambrian	
SMP083	2319.43	2319.43	4/19/2021	4,638.86	884,000		Top Madison Group to Precambrian	PLi / In
SMP084	2106.95	2106.95	4/19/2021	4,213.91	803,000	PNG, T	Top Madison Group to Precambrian	
SML001	1526.19	1526.19	4/19/2021	15,261.90	582,000	PNG	Top Madison Group to Precambrian	PLi / In
SML002	1223.27	1221.99	4/19/2021	12,232.70	466,000	3KM, PNG	Top Madison Group to Precambrian	
SMP087	2599.37	2599.06	4/19/2021	5,198.11	990,000		Top Madison Group to Precambrian; except 34-3-12 W2, 2-4-12 W2, 12-4-12 W2 and 13-4-12	

Permit / Lease / File No.	Surface Area (Ha)	Disposition Area (Ha)	Offering Date	Annual Cost (CAD \$)	MWR (CAD \$)	Restrictions	Stratigraphic Interval	Lessor / AMI (In / Out)	
							W2 top Madison Group to top Winnipeg Formation		
SMP090	1546.80	1482.47	4/19/2021	2,964.95	590,000	PNG, CA, 3KM	Top Madison Group to Precambrian	PLi / Out	
SMP099	1550.44	1550.44	4/19/2021	3,100.88	591,000	3KM, PNG	Top Madison Group to top Winnipeg Formation	PLi / In	
SMP100	1874.77	1874.77	4/19/2021	3,749.53	714,000		Top Madison Group to top Winnipeg Formation; except NE-5-1-13 W2 top Madison Group to Precambrian		
SMP101	516.70	516.70	4/19/2021	1,033.40	197,000	PNG	Top Madison Group to Precambrian	DEEP / In	
SMP102	1806.44	1806.44	4/19/2021	3,612.88	688,000		Top Madison Group to Precambrian; except 16-1-13 W2, 21-1-13 W2 and 22-1-13 W2 top Madison Group to top Winnipeg Formation		
SMP103	2391.56	2391.56	4/19/2021	4,783.11	911,000	CA, PNG, 3KM	Top Madison Group to top Winnipeg Formation	PLi / In	
SMP104	2074.75	2074.75	4/19/2021	4,149.50	791,000	PNG, 3KM			
SMP105	2316.88	2316.88	4/19/2021	4,633.77	883,000	PNG	Top Madison Group to top Precambrian; except 4-2-13 W2 and SE-9-2-13 W2 and W/2-9-2-13 W2 top Madison Group to top Winnipeg Formation; NE-9-2-13 W2 top Madison Group to top Duperow Formation and base Souris River Formation to top Winnipeg Formation.	DEEP / In	
SMP106	2017.84	1956.18	4/19/2021	3,912.37	769,000	PNG	Top Madison Group to top Precambrian; except 33-2-13 W2, 34-2-13 W2, W/2-35-2-13 W2, SE- 35-2-13 W2 and 36-2-13 W2 top Madison Group to top Winnipeg Formation		
SMP107	1548.07	1510.04	4/19/2021	3,020.09	590,000		3KM, PNG	Top Madison Group to Precambrian	PLi / In
SMP108	2392.85	2392.85	4/19/2021	4,785.70	912,000				
SMP109	2203.46	2203.46	4/19/2021	4,406.91	840,000	PNG			
SMP110	2523.42	2523.42	4/19/2021	5,046.84	961,000	3KM, PNG			
SMP111	3049.83	3049.83	4/19/2021	6,099.66	1,162,000	PNG			
SMP112	4544.02	4544.02	4/19/2021	9,088.04	1,731,000				
SMP114	4394.98	4394.98	4/19/2021	8,789.95	1,674,000	CA, PNG	Top Madison Group to Precambrian	DEEP / In	
SMP115	4109.14	4109.14	4/19/2021	8,218.29	1,565,000				
SMP116	4576.26	4576.26	4/19/2021	9,152.52	1,743,000	PNG	Top Madison Group to top Precambrian; except SE-4-3-14 W2, E/2-5-3-14 W2, E/2-7-3-14 W2, 18- 3-14 W2 and 19-3-14 W2 top Madison Group to top Winnipeg Formation	PLi / In	
SMP117	1604.93	1604.93	4/19/2021	3,209.86	612,000				
SMP118	2308.58	2308.58	4/19/2021	4,617.16	880,000		Top Madison Group to top Precambrian; except 17-3-14 W2 top Madison Group to top Winnipeg Formation		
SMP119	3447.80	3447.80	4/19/2021	6,895.61	1,314,000		PNG, 3KM, CA	Top Madison Group to Precambrian	DEEP / In
SMP120	3380.74	3380.74	4/19/2021	6,761.48	1,288,000				
SMP121	4585.77	4388.70	4/19/2021	8,777.40	1,747,000				
SMP145	517.46	517.46	8/23/2021	1,034.92	199,000				
SMP150	1291.87	1259.65	8/23/2021	2,519.30	497,000	PNG	Top Madison Group to Precambrian	PLi / In	
SMP151	1811.02	1811.02	8/23/2021	3,622.05	697,000				
SMP152	516.90	516.90	8/23/2021	1,033.79	199,000	PNG	Top Madison Group to Precambrian	PLi / Out	
SMP153	516.17	516.17	8/23/2021	1,032.34	199,000				
SMP154	1226.31	1157.61	8/23/2021	2,315.23	472,000	PNG, 3KM	Top Madison Group to Precambrian	PLi / Out	
SMP156	258.80	258.80	8/23/2021	517.60	100,000			PLi / In	
SMP160	194.65	194.65	8/23/2021	389.30	75,000	PNG	Top Madison Group to Precambrian	PLi / In	
SMP162	2393.70	2393.70	8/23/2021	4,787.39	921,000				

Permit / Lease / File No.	Surface Area (Ha)	Disposition Area (Ha)	Offering Date	Annual Cost (CAD \$)	MWR (CAD \$)	Restrictions	Stratigraphic Interval	Lessor / AMI (In / Out)
SMP143	3359.85	3359.85	8/23/2021	6,719.71	1,292,000	PNG, 3KM, CA	Top Madison Group to Precambrian	PLi / Out
SMP164	2327.11	2327.11	8/23/2021	4,654.22	895,000	PNG, 3KM	Top Madison Group to Precambrian	PLi / Out
AMP165	515.00	515.00	8/23/2021	1,030.01	198,000	PNG	Top Madison Group to Precambrian	PLi / Out
SMP167	261.40	245.07	8/23/2021	490.13	101,000		Top Madison Group to Precambrian	PLi / In
SMP168	130.07	130.07	8/23/2021	260.13	50,000		Top Madison Group to Precambrian	PLi / In
SMP169	2329.79	2329.79	8/23/2021	4,659.58	896,000	PNG	Top Madison Group to Precambrian	PLi / Out
SMP170	2192.98	2192.98	8/23/2021	4,385.97	843,000	PNG, 3KM	Top Madison Group to Precambrian	PLi / Out
M043397	1156.53	1156.53	11/15/2023	2,313.06	N/A	N/A	Top Madison Group to Top Red River	Canpar / In
M043398	3030.75	3030.75	11/15/2023	6,061.50	N/A	N/A	Top Madison Group to Top Red River	Canpar / In
M043399	2657.18	2657.18	11/15/2023	5,314.35	N/A	N/A	Top Madison Group to Top Red River	Canpar / In
M043400	1513.73	1513.73	11/15/2023	3,027.47	N/A	N/A	Top Madison Group to Top Red River	Canpar / In
M043401	2307.53	2307.53	11/15/2023	4,615.06	N/A	N/A	Top Madison Group to Top Red River	Canpar / In
M043402	979.60	979.60	11/15/2023	1,959.21	N/A	N/A	Top Madison Group to Top Red River	Freehold / In
M043403	2333.42	2333.42	11/15/2023	4,666.85	N/A	N/A	Top Madison Group to Top Red River	Freehold / In
M043404	674.78	674.78	11/15/2023	1,349.55	N/A	N/A	Top Madison Group to Top Red River	Freehold / In
M043405	1263.11	1263.11	11/15/2023	2,526.21	N/A	N/A	Top Madison Group to Top Red River	Freehold / In

Appendix 2: Drill Hole Data

Summary Table of Drill Holes:

- 279 wells with wireline logs to determine the average porosity over the net pay interval.

Well ID	Reference Elevation - Kelly Bushing (m)	Measured Depth (m)	True Vertical Depth (m)	Vertical or Deviated Well	Surface Location	Surface Hole Easting (NAD83)	Surface Hole Northing (NAD83)	Bottom Hole Easting (NAD83)	Bottom Hole Northing (NAD83)
111/15-05-001-08W2/00	583.4	2850.5	2850.5	vertical	15-05-001-08W2	643156	5430584	643156	5430584
131/08-13-001-10W2/00	584.2	2814.2	2814.2	vertical	08-13-001-10W2	630707	5432981	630707	5432981
121/12-24-001-10W2/00	581.3	2810.9	2810.9	vertical	12-24-001-10W2	629438	5434660	629438	5434660
121/10-28-001-10W2/00	587.0	3165.0	3165.0	vertical	10-28-001-10W2	625275	5436213	625275	5436213
102/14-04-001-11W2/00	590.9	3839.5	3496.2	deviated	12-10-001-11W2	616345	5431028	615352	5429979
141/03-08-001-11W2/00	602.0	3394.9	3394.9	vertical	03-08-001-11W2	613844	5430406	613844	5430406
103/01-02-001-12W2/00	618.6	3731.0	3731.0	vertical	01-02-001-12W2	609801	5428760	609801	5428760
131/16-12-001-12W2/00	603.7	2463.0	2462.8	vertical	16-12-001-12W2	611189	5431660	611185	5431658
121/13-18-001-12W2/00	631.9	2480.0	2480.0	vertical	13-18-001-12W2	601765	5432827	601765	5432827
101/01-26-001-12W2/00	596.7	3442.8	3442.2	vertical	01-26-001-12W2	609425	5435055	609430	5435066
101/02-03-001-13W2/00	668.9	2556.0	2555.7	vertical	02-03-001-13W2	597856	5428473	597856	5428509
141/15-31-001-15W2/00	710.0	2550.0	2550.0	vertical	15-31-001-15W2	573383	5437486	573383	5437486
101/15-04-001-16W2/00	678.4	2490.0	2490.0	vertical	15-04-001-16W2	566902	5429286	566902	5429286
101/02-14-001-16W2/00	703.8	2514.9	2514.9	vertical	02-14-001-16W2	570124	5431430	570124	5431430
131/03-32-001-16W2/00	695.3	3224.0	3224.0	vertical	03-32-001-16W2	564658	5436326	564658	5436326
141/15-14-001-17W2/00	688.1	3205.0	3205.0	vertical	15-14-001-17W2	560374	5432589	560374	5432589
121/07-23-001-17W2/00	680.6	3194.0	3194.0	vertical	07-23-001-17W2	560224	5433166	560224	5433166
101/11-27-001-17W2/00	703.8	3198.8	3198.8	vertical	11-27-001-17W2	558309	5435227	558309	5435227
121/01-08-002-06W2/00	578.8	2725.0	2681.7	deviated	01-08-002-06W2	662588	5441580	662591	5441375
141/05-06-002-08W2/00	575.0	3406.3	3406.3	vertical	05-06-002-08W2	640344	5439709	640344	5439709
131/14-14-002-09W2/00	572.0	2686.0	2686.0	vertical	14-14-002-09W2	637598	5443567	637598	5443567
111/16-15-002-09W2/00	574.3	2683.5	2683.5	vertical	16-15-002-09W2	637043	5443389	637043	5443389
111/08-22-002-09W2/00	570.2	2611.3	2611.1	vertical	08-22-002-09W2	637026	5444232	637022	5444248
121/09-22-002-09W2/00	570.1	2665.0	2664.4	vertical	09-22-002-09W2	636858	5444592	636850	5444611
111/04-23-002-09W2/00	570.3	2659.0	2659.0	vertical	04-23-002-09W2	637472	5443854	637472	5443854
131/01-28-002-09W2/00	569.5	2665.0	2654.2	vertical	01-28-002-09W2	635172	5445453	635157	5445457
111/11-30-002-09W2/00	572.2	2675.0	2675.0	vertical	11-30-002-09W2	631326	5446122	631329	5446121
113/11-30-002-09W2/00	571.5	2645.0	2640.9	deviated	11-30-002-09W2	631343	5446029	631346	5446023
101/03-16-002-10W2/00	584.6	3292.1	3292.1	vertical	03-16-002-10W2	624875	5441931	624875	5441931
131/15-25-002-10W2/00	571.1	2665.0	2662.6	deviated	15-25-002-10W2	629979	5446659	629989	5446528
131/04-36-002-10W2/00	571.4	2676.0	2675.7	vertical	04-36-002-10W2	629089	5446969	629076	5446968
141/01-29-002-12W2/00	598.3	2400.0	2400.0	vertical	01-29-002-12W2	604596	5444923	604596	5444923
101/14-33-002-12W2/00	598.0	2421.0	2421.0	vertical	14-33-002-12W2	605333	5447568	605333	5447568
111/05-34-002-12W2/00	595.5	2368.5	2368.5	vertical	05-34-002-12W2	606519	5446768	606519	5446768
101/06-02-002-14W2/00	681.6	2510.0	2510.0	vertical	06-02-002-14W2	589142	5438478	589142	5438478
101/08-05-002-14W2/00	680.0	3262.0	3262.0	vertical	08-05-002-14W2	585087	5438402	585087	5438402
141/08-16-002-14W2/00	647.1	3189.1	3189.1	vertical	08-16-002-14W2	586734	5441789	586734	5441789
101/10-16-002-14W2/00	647.1	3101.2	3101.2	vertical	10-16-002-14W2	586232	5442040	586232	5442040
121/16-02-002-15W2/00	696.3	2521.0	2521.0	vertical	16-02-002-15W2	580121	5439085	580121	5439085
121/11-33-002-16W2/00	718.9	2420.0	2420.0	vertical	11-33-002-16W2	566245	5446566	566245	5446566
131/12-31-003-06W2/00	586.5	2514.0	2514.0	vertical	12-31-003-06W2	659249	5458185	659249	5458185
121/15-19-003-08W2/00	584.3	2577.0	2577.0	vertical	15-19-003-08W2	640462	5454730	640462	5454730
101/09-25-003-09W2/00	582.3	2557.0	2557.0	vertical	09-25-003-09W2	639369	5455949	639369	5455949
131/14-25-003-09W2/00	581.9	2491.0	2489.3	vertical	14-25-003-09W2	638408	5456447	638403	5456446
131/08-35-003-09W2/00	579.7	2497.0	2497.0	vertical	08-35-003-09W2	637593	5457265	637593	5457265
121/16-35-003-09W2/00	580.3	2552.0	2552.0	vertical	16-35-003-09W2	637547	5457941	637547	5457941
121/13-36-003-09W2/00	583.5	2565.0	2564.1	deviated	13-36-003-09W2	637982	5457835	637990	5457863
121/15-02-003-10W2/00	569.0	2650.0	2649.6	vertical	15-02-003-10W2	627577	5449460	627550	5449474
131/03-14-003-10W2/00	570.6	2620.0	2620.0	vertical	03-14-003-10W2	627102	5451804	627102	5451804
131/03-21-003-10W2/00	565.7	2921.0	2921.0	vertical	03-21-003-10W2	623777	5453340	623777	5453340
101/09-22-003-10W2/00	578.5	2618.0	2618.0	vertical	09-22-003-10W2	626359	5454028	626359	5454028
121/09-34-003-10W2/00	577.0	2584.0	2584.0	vertical	09-34-003-10W2	626173	5457083	626173	5457083
111/14-15-003-15W2/00	655.1	3039.0	3039.0	vertical	14-15-003-15W2	576578	5451808	576578	5451808

111/04-22-003-15W2/00	653.7	3073.0	3006.3	vertical	04-22-003-15W2	576243	5452199	576242	5452191
101/07-07-003-17W2/00	706.5	2697.0	2697.0	vertical	07-07-003-17W2	552461	5449260	552461	5449260
101/07-23-003-17W2/00	741.3	3100.1	3100.1	vertical	07-23-003-17W2	558967	5452502	558967	5452502
101/01-10-003-21W2/00	771.0	2944.5	2944.5	vertical	01-10-003-21W2	518615	5448588	518615	5448588
141/06-30-004-04W2/00	591.3	2336.0	2336.0	vertical	06-30-004-04W2	679181	5466615	679181	5466615
141/14-18-004-06W2/00	593.5	2475.0	2475.0	vertical	14-18-004-06W2	659635	5463505	659635	5463505
132/15-18-004-06W2/00	594.5	2475.0	2472.6	vertical	15-18-004-06W2	659803	5463576	659794	5463578
141/04-01-004-07W2/00	588.6	2513.0	2513.0	vertical	04-01-004-07W2	657712	5458983	657712	5458983
141/15-07-004-07W2/00	589.1	2518.3	2518.1	vertical	15-07-004-07W2	650286	5461602	650282	5461607
121/05-13-004-07W2/00	593.7	2441.0	2441.0	vertical	05-13-004-07W2	657436	5462550	657436	5462550
191/10-14-004-08W2/00	592.5	3420.0	2712.1	vertical	01-14-004-07W2	657213	5462228	656698	5462734
121/08-22-004-07W2/00	594.2	2905.0	2905.0	vertical	08-22-004-07W2	655297	5463913	655297	5463913
121/07-16-004-08W2/00	590.7	2523.0	2523.0	vertical	07-16-004-08W2	643626	5462094	643626	5462094
101/11-18-004-08W2/00	588.1	2526.0	2523.6	vertical	11-18-004-08W2	639966	5462507	639969	5462494
131/02-19-004-08W2/00	589.6	2510.0	2509.2	vertical	02-19-004-08W2	640300	5463333	640297	5463342
131/12-20-004-08W2/00	591.5	2502.0	2502.0	vertical	12-20-004-08W2	641119	5464171	641119	5464171
121/10-29-004-08W2/00	594.4	2473.0	2473.0	vertical	10-29-004-08W2	641821	5465666	641821	5465666
141/06-30-004-08W2/00	591.6	2485.0	2485.0	vertical	06-30-004-08W2	639977	5465485	639977	5465485
141/01-31-004-08W2/00	593.7	2471.0	2470.8	vertical	01-31-004-08W2	640767	5466734	640767	5466742
141/09-31-004-08W2/00	597.7	3000.1	3000.1	vertical	09-31-004-08W2	640762	5467421	640762	5467421
101/08-01-004-09W2/00	586.4	2560.0	2560.0	vertical	08-01-004-09W2	639274	5458821	639274	5458821
141/01-10-004-09W2/00	581.6	2527.0	2527.0	vertical	01-10-004-09W2	636025	5459995	636025	5459995
111/13-11-004-09W2/00	583.9	2507.0	2507.0	vertical	13-11-004-09W2	636573	5461125	636573	5461125
121/16-13-004-09W2/00	586.3	2500.0	2500.0	vertical	16-13-004-09W2	638978	5462785	638978	5462785
121/10-14-004-09W2/00	585.0	2495.0	2495.0	vertical	10-14-004-09W2	637065	5462322	637065	5462322
111/12-22-004-09W2/00	588.4	2490.0	2489.5	vertical	12-22-004-09W2	634832	5463900	634832	5463900
121/16-23-004-09W2/00	588.3	2495.1	2494.6	vertical	16-23-004-09W2	637411	5464280	637413	5464280
111/06-24-004-09W2/00	590.1	2506.7	2506.3	vertical	06-24-004-09W2	638472	5463630	638489	5463646
131/03-25-004-09W2/00	588.5	2489.0	2488.1	vertical	03-25-004-09W2	638262	5464923	638259	5464904
141/01-27-004-09W2/00	589.9	2481.0	2480.9	vertical	01-27-004-09W2	635950	5464949	635950	5464950
121/12-27-004-09W2/00	590.2	2478.0	2477.8	vertical	12-27-004-09W2	634560	5465503	634562	5465492
191/13-34-004-09W2/00	593.8	2895.6	2563.6	deviated	16-33-004-09W2	634211	5467616	634634	5467713
141/06-11-004-10W2/00	585.0	2545.0	2545.0	vertical	06-11-004-10W2	627189	5460277	627189	5460277
141/16-24-004-10W2/00	585.6	2495.0	2494.7	vertical	16-24-004-10W2	629449	5464372	629447	5464374
141/14-35-004-10W2/00	587.4	2488.0	2378.8	deviated	14-35-004-10W2	626928	5467500	626946	5467517
121/13-01-004-11W2/00	571.5	2875.5	2875.5	vertical	13-01-004-11W2	618313	5458968	618313	5458968
121/01-04-004-11W2/00	568.2	2243.0	2243.0	vertical	01-04-004-11W2	614637	5457747	614637	5457747
131/13-20-004-11W2/00	572.4	2928.2	2928.2	vertical	13-20-004-11W2	611794	5463859	611794	5463859
131/06-07-004-12W2/00	590.8	2879.0	2878.8	vertical	06-07-004-12W2	600825	5459615	600826	5459649
121/04-09-004-12W2/00	589.1	2886.0	2885.3	vertical	04-09-004-12W2	603690	5459187	603698	5459172
141/01-22-004-19W2/00	755.6	3075.0	3075.0	vertical	01-22-004-19W2	538243	5461757	538243	5461757
121/09-36-005-04W2/00	594.3	2510.7	2510.4	vertical	09-36-005-04W2	687394	5478319	687397	5478301
141/15-11-005-05W2/00	593.4	2290.0	2290.0	vertical	15-11-005-05W2	675975	5472145	675975	5472145
121/13-12-005-05W2/00	593.1	2282.0	2281.8	vertical	13-12-005-05W2	676719	5471927	676722	5471928
121/02-14-005-05W2/00	595.4	2780.0	2780.0	vertical	02-14-005-05W2	675851	5472325	675851	5472325
121/07-15-005-05W2/00	593.4	2287.0	2287.0	vertical	07-15-005-05W2	674231	5472607	674231	5472607
121/15-23-005-05W2/00	596.6	2247.0	2247.0	vertical	15-23-005-05W2	675772	5475183	675772	5475183
111/02-24-005-05W2/00	594.8	2246.0	2246.0	vertical	02-24-005-05W2	677606	5474047	677606	5474047
121/15-24-005-05W2/00	599.2	2244.0	2236.9	deviated	15-24-005-05W2	677352	5475185	677321	5475145
111/05-26-005-05W2/00	595.2	2240.0	2238.2	vertical	05-26-005-05W2	675090	5475886	675089	5475911
131/14-27-005-05W2/00	594.8	2230.0	2230.0	vertical	14-27-005-05W2	673602	5476955	673602	5476955
141/05-33-005-05W2/00	595.6	2268.0	2263.5	deviated	05-33-005-05W2	671845	5477660	671907	5477658
111/07-33-005-05W2/00	596.2	2246.0	2246.0	vertical	07-33-005-05W2	672671	5477412	672671	5477412
101/09-33-005-05W2/00	601.7	2278.0	2277.4	vertical	09-33-005-05W2	672925	5478025	672937	5478056
121/12-33-005-05W2/00	594.0	2242.1	2242.1	vertical	12-33-005-05W2	671694	5477895	671694	5477895
111/14-33-005-05W2/00	597.2	2235.0	2235.0	vertical	14-33-005-05W2	672208	5478298	672208	5478298
141/05-34-005-05W2/00	599.3	2269.8	2269.8	vertical	05-34-005-05W2	673398	5477688	673398	5477688
191/11-34-005-05W2/00	596.4	2260.5	2250.2	deviated	06-34-005-05W2	673813	5477768	673807	5477853
191/15-34-005-05W2/00	596.5	2445.0	2184.4	vertical	10-34-005-05W2	674099	5478074	674084	5478435
101/05-05-005-06W2/00	599.7	2415.0	2415.0	vertical	05-05-005-06W2	660608	5469123	660608	5469123
141/16-10-005-06W2/00	595.7	2361.0	2361.0	vertical	16-10-005-06W2	665070	5471745	665070	5471745
111/07-04-005-07W2/00	598.6	2850.0	2850.0	vertical	07-04-005-07W2	653461	5468832	653461	5468832
112/07-04-005-07W2/00	598.2	2423.1	2423.1	vertical	07-04-005-07W2	653373	5468835	653373	5468835
131/11-04-005-07W2/00	598.3	2450.0	2450.0	vertical	11-04-005-07W2	652690	5469368	652690	5469368
121/15-08-005-07W2/00	599.8	2851.5	2850.8	vertical	15-08-005-07W2	651501	5471204	651512	5471216
131/08-14-005-07W2/00	596.0	2388.2	2388.2	vertical	08-14-005-07W2	656794	5472372	656794	5472372
111/03-15-005-07W2/00	600.0	2416.0	2415.5	vertical	03-15-005-07W2	654492	5471708	654501	5471733
101/05-07-005-08W2/00	600.8	2448.0	2448.0	vertical	05-07-005-08W2	639422	5470147	639422	5470147
131/08-15-005-08W2/00	601.5	2467.0	2467.0	vertical	08-15-005-08W2	645375	5471935	645375	5471935
141/11-28-005-08W2/00	601.3	2422.7	2375.3	deviated	11-28-005-08W2	642918	5475481	642977	5475696
131/15-30-005-08W2/00	598.3	2396.0	2396.0	vertical	15-30-005-08W2	639979	5475925	639977	5475915

101/05-32-005-08W2/00	602.4	2389.0	2389.0	vertical	05-32-005-08W2	640820	5476698	640820	5476698
121/16-32-005-08W2/00	602.0	2350.0	2350.0	vertical	16-32-005-08W2	641986	5477474	641986	5477474
131/11-33-005-08W2/00	601.7	2370.0	2370.0	vertical	11-33-005-08W2	642836	5477257	642836	5477257
121/03-35-005-08W2/00	600.2	2417.0	2398.2	deviated	03-35-005-08W2	646163	5476259	646079	5476310
141/10-18-005-09W2/00	596.1	2431.0	2430.9	vertical	10-18-005-09W2	630492	5472022	630506	5472031
131/09-23-005-09W2/00	601.8	2432.0	2432.0	vertical	09-23-005-09W2	637148	5473904	637148	5473904
131/14-29-005-09W2/00	600.2	2861.0	2861.0	vertical	14-29-005-09W2	631524	5475679	631524	5475679
191/14-28-005-10W2/00	593.7	2775.0	2701.3	deviated	15-28-005-10W2	623782	5475357	623566	5475391
121/05-22-005-12W2/00	577.4	2440.0	2439.9	vertical	05-22-005-12W2	605030	5472525	605031	5472523
101/09-35-005-17W2/00	630.0	2835.2	2835.2	vertical	09-35-005-17W2	559158	5475576	559158	5475576
101/11-08-006-03W2/00	595.9	2631.6	2631.6	vertical	11-08-006-03W2	689946	5481808	689946	5481808
141/01-03-006-05W2/00	598.1	2257.0	2257.0	vertical	01-03-006-05W2	674631	5478963	674631	5478963
101/01-04-006-05W2/00	599.3	2236.0	2236.0	vertical	01-04-006-05W2	672780	5478725	672780	5478725
111/03-04-006-05W2/00	598.8	2230.0	2230.0	vertical	03-04-006-05W2	672140	5478704	672140	5478704
101/16-05-006-05W2/00	600.4	2250.0	2250.0	vertical	16-05-006-05W2	671246	5479963	671246	5479963
192/02-09-006-05W2/00	599.2	2669.0	2657.5	deviated	07-09-006-05W2	672347	5480667	672350	5480561
101/09-02-006-06W2/00	600.1	2590.0	2590.0	vertical	09-02-006-06W2	666432	5479438	666432	5479438
101/03-06-006-06W2/00	600.6	2885.5	2885.5	vertical	03-06-006-06W2	659134	5478365	659134	5478365
111/14-06-006-06W2/00	599.3	2722.1	2722.1	vertical	14-06-006-06W2	659192	5479516	659192	5479516
101/10-10-006-06W2/00	602.5	2065.2	2065.2	vertical	10-10-006-06W2	664341	5480994	664341	5480994
131/15-13-006-06W2/00	599.3	2227.0	2227.0	vertical	15-13-006-06W2	667410	5483127	667410	5483127
111/09-29-006-06W2/00	603.9	2655.0	2654.7	vertical	09-29-006-06W2	661415	5485660	661431	5485661
141/12-16-006-07W2/00	601.0	2309.0	2307.1	deviated	12-16-006-07W2	652112	5482311	652103	5482308
131/09-32-006-07W2/00	609.0	2282.0	2282.0	vertical	09-32-006-07W2	651454	5487250	651454	5487250
131/06-04-006-08W2/00	601.8	2376.0	2376.0	vertical	06-04-006-08W2	642831	5478417	642831	5478417
131/14-04-006-08W2/00	600.2	2369.0	2368.8	vertical	14-04-006-08W2	642684	5479236	642681	5479244
121/16-05-006-08W2/00	601.0	2384.0	2384.0	vertical	16-05-006-08W2	641963	5479045	641963	5479045
131/09-09-006-08W2/00	599.6	2356.0	2356.0	vertical	09-09-006-08W2	643584	5480495	643584	5480495
111/14-09-006-08W2/00	600.6	2367.0	2367.0	vertical	14-09-006-08W2	642842	5480690	642842	5480690
141/07-10-006-08W2/00	600.9	2368.0	2366.7	deviated	07-10-006-08W2	644946	5480100	644957	5480116
121/10-23-006-08W2/00	600.5	2311.0	2311.0	vertical	10-23-006-08W2	646300	5483626	646300	5483626
122/05-33-006-10W2/00	606.1	2036.0	2011.0	deviated	05-33-006-10W2	622821	5485998	622682	5485915
101/09-01-006-11W2/00	596.5	2750.0	2750.0	vertical	09-01-006-11W2	619290	5478212	619290	5478212
131/14-12-006-11W2/00	605.7	2763.0	2761.3	vertical	14-12-006-11W2	618260	5480260	618263	5480260
131/03-14-006-11W2/00	601.3	2729.0	2728.3	vertical	03-14-006-11W2	616695	5480741	616703	5480725
191/14-14-006-11W2/00	600.6	2835.0	2774.6	deviated	12-14-006-11W2	616484	5481453	616576	5481648
131/07-15-006-11W2/00	597.3	2855.0	2801.0	deviated	07-15-006-11W2	615686	5480941	615499	5481034
192/11-15-006-11W2/00	596.1	3029.0	2615.5	vertical	13-15-006-11W2	614656	5481571	615063	5481250
131/12-15-006-11W2/00	595.6	2695.0	2695.0	vertical	12-15-006-11W2	614657	5481501	614657	5481501
131/08-16-006-11W2/00	596.1	2738.0	2738.0	vertical	08-16-006-11W2	614169	5480981	614169	5480981
192/08-16-006-11W2/00	594.6	2905.0	2606.7	vertical	09-16-006-11W2	614412	5481250	614264	5480930
121/10-16-006-11W2/00	595.6	2748.0	2747.0	deviated	10-16-006-11W2	613891	5481171	613890	5481217
111/16-20-006-11W2/00	600.7	2719.0	2719.0	vertical	16-20-006-11W2	612727	5483128	612727	5483128
111/14-26-006-11W2/00	608.8	2711.0	2711.0	vertical	14-26-006-11W2	616758	5485008	616758	5485008
111/09-28-006-11W2/00	608.7	2923.3	2923.3	vertical	09-28-006-11W2	614347	5484541	614347	5484541
131/01-29-006-11W2/00	605.0	2752.0	2752.0	vertical	01-29-006-11W2	612528	5483870	612528	5483870
121/07-29-006-11W2/00	604.6	2809.0	2809.0	vertical	07-29-006-11W2	612126	5484061	612126	5484061
141/10-29-006-11W2/00	605.7	2820.0	2820.0	vertical	10-29-006-11W2	612254	5484689	612254	5484689
132/11-32-006-11W2/00	607.6	2845.0	2838.5	deviated	11-32-006-11W2	611647	5486146	611642	5486175
111/12-33-006-11W2/00	612.6	2748.0	2748.0	vertical	12-33-006-11W2	613205	5485946	613205	5485946
131/08-34-006-11W2/00	610.4	2788.0	2735.0	deviated	08-34-006-11W2	615699	5485661	615770	5485883
131/11-34-006-11W2/00	614.7	2841.0	2841.0	vertical	11-34-006-11W2	614870	5486372	614870	5486372
141/13-34-006-11W2/00	614.0	1950.0	1950.0	vertical	13-34-006-11W2	614647	5486616	614647	5486616
191/16-34-006-11W2/00	614.7	3027.5	2576.0	vertical	04-02-007-11W2	615596	5487053	615773	5486564
141/04-35-006-11W2/00	609.2	2750.4	2750.4	vertical	04-35-006-11W2	616339	5485499	616339	5485499
131/11-35-006-11W2/00	609.2	2743.0	2743.0	vertical	11-35-006-11W2	616611	5486220	616611	5486220
121/06-20-006-13W2/00	582.7	2918.0	2918.0	vertical	06-20-006-13W2	592333	5481903	592333	5481903
111/10-20-006-13W2/00	580.0	2375.3	2375.3	vertical	10-20-006-13W2	592863	5482449	592863	5482449
101/07-07-006-15W2/00	623.9	2435.0	2284.9	vertical	07-07-006-15W2	571719	5478560	571710	5478559
111/08-02-006-16W2/00	626.1	2849.9	2849.6	vertical	08-02-006-16W2	569035	5476791	569034	5476806
121/13-06-006-18W2/00	674.7	2084.0	2083.0	deviated	13-06-006-18W2	541645	5477367	541675	5477335
121/08-11-007-07W2/00	604.3	2232.0	2232.0	vertical	08-11-007-07W2	655918	5489875	655918	5489875
111/11-16-007-07W2/00	610.5	2636.0	2636.0	vertical	11-16-007-07W2	651835	5491807	651835	5491807
121/03-24-007-07W2/00	607.8	2635.0	2610.0	deviated	03-24-007-07W2	656587	5492964	656527	5492771
111/07-17-007-08W2/00	612.0	2286.0	2286.0	vertical	07-17-007-08W2	640809	5491149	640809	5491149
111/01-22-007-08W2/00	611.5	2263.3	2263.3	vertical	01-22-007-08W2	644383	5492473	644383	5492473
111/06-24-007-08W2/00	612.5	2257.0	2257.0	vertical	06-24-007-08W2	646906	5492946	646906	5492946
121/13-28-007-08W2/00	614.5	2485.0	2478.0	deviated	13-28-007-08W2	641333	5495303	641418	5495336
101/09-29-007-08W2/00	613.3	2518.0	2509.6	vertical	09-29-007-08W2	641131	5494909	641143	5494902
142/07-30-007-08W2/00	616.3	2279.8	2275.6	vertical	07-30-007-08W2	639239	5494383	639235	5494424
121/06-33-007-08W2/00	615.7	1825.0	1825.0	vertical	06-33-007-08W2	641723	5496170	641723	5496170

131/15-15-007-09W2/00	613.6	2708.1	2708.1	vertical	15-15-007-09W2	634070	5492110	634070	5492110
121/12-05-007-10W2/00	606.1	1919.0	1919.0	vertical	12-05-007-10W2	620386	5487817	620394	5487836
131/14-13-007-10W2/00	604.3	2552.5	2551.5	vertical	14-13-007-10W2	627187	5491812	627173	5491805
121/07-02-007-11W2/00	609.4	2821.0	2821.0	vertical	07-02-007-11W2	616310	5487278	616310	5487278
101/12-02-007-11W2/00	612.2	2752.4	2752.4	vertical	12-02-007-11W2	615482	5487731	615482	5487731
141/13-02-007-11W2/00	610.9	2000.0	2000.0	vertical	13-02-007-11W2	615470	5488153	615470	5488153
142/13-02-007-11W2/00	611.1	2711.0	2698.9	deviated	13-02-007-11W2	615566	5488234	615506	5488311
111/07-03-007-11W2/00	611.5	2744.0	2744.0	vertical	07-03-007-11W2	614773	5487300	614773	5487300
101/08-03-007-11W2/00	614.5	2815.0	2815.0	vertical	08-03-007-11W2	615073	5487432	615073	5487432
121/16-03-007-11W2/00	615.8	2709.0	2709.0	vertical	16-03-007-11W2	614915	5487995	614915	5487995
121/16-09-007-11W2/00	613.7	2880.0	2880.0	vertical	16-09-007-11W2	613284	5489749	613284	5489749
141/02-10-007-11W2/00	609.5	2744.0	2744.0	vertical	02-10-007-11W2	614829	5488723	614829	5488723
121/03-11-007-11W2/00	610.3	1935.0	1935.0	vertical	03-11-007-11W2	615725	5488532	615725	5488532
131/11-12-007-11W2/00	607.1	1895.0	1895.0	vertical	11-12-007-11W2	617463	5489625	617463	5489625
141/06-14-007-11W2/00	609.0	1903.1	1903.1	vertical	06-14-007-11W2	615991	5490790	615991	5490790
131/08-18-007-11W2/00	617.6	2627.0	2627.0	vertical	08-18-007-11W2	610124	5490662	610124	5490662
111/15-20-007-11W2/00	615.2	2757.0	2757.0	vertical	15-20-007-11W2	611365	5492838	611365	5492838
111/12-21-007-11W2/00	614.5	2703.0	2703.0	vertical	12-21-007-11W2	612282	5492421	612282	5492421
131/01-29-007-12W2/00	603.4	2662.0	2662.0	vertical	01-29-007-12W2	601809	5493231	601809	5493231
121/10-02-007-13W2/00	578.9	2330.0	2330.0	vertical	10-02-007-13W2	596640	5487344	596640	5487344
121/08-06-007-15W2/00	594.5	2714.3	2714.3	vertical	08-06-007-15W2	570839	5486537	570839	5486537
111/04-27-007-15W2/00	583.3	2344.6	2302.4	deviated	04-27-007-15W2	574629	5492802	574666	5492583
101/05-31-007-15W2/00	584.0	2599.9	2599.9	vertical	05-31-007-15W2	569667	5494708	569667	5494708
101/16-35-007-18W2/00	659.5	2245.0	2245.0	vertical	16-35-007-18W2	548015	5495270	548015	5495270
121/10-03-008-05W2/00	603.9	2475.0	2475.0	vertical	10-03-008-05W2	673057	5499015	673057	5499015
141/11-06-008-06W2/00	618.2	2166.2	2166.2	vertical	11-06-008-06W2	658186	5498609	658186	5498609
131/15-20-008-08W2/00	621.7	2602.0	2589.1	deviated	15-20-008-08W2	640344	5503292	640379	5503400
141/07-24-008-09W2/00	617.0	2578.0	2578.0	vertical	07-24-008-09W2	637320	5502540	637320	5502540
131/16-20-008-10W2/00	614.5	2575.0	2575.0	vertical	16-20-008-10W2	621234	5502942	621234	5502942
141/09-23-008-10W2/00	615.2	2585.0	2584.8	vertical	09-23-008-10W2	626268	5502673	626265	5502664
101/01-28-008-10W2/00	615.9	2600.0	2600.0	vertical	01-28-008-10W2	622965	5503342	622965	5503342
111/15-30-008-10W2/00	613.9	2578.0	2577.7	vertical	15-30-008-10W2	619356	5504351	619356	5504333
131/02-32-008-10W2/00	615.2	2588.0	2588.0	vertical	02-32-008-10W2	620767	5504954	620767	5504954
111/14-12-008-13W2/00	608.8	2252.0	2252.0	vertical	14-12-008-13W2	597769	5499034	597769	5499034
141/08-22-008-13W2/00	605.1	2475.0	2475.0	vertical	08-22-008-13W2	595319	5501632	595324	5501640
131/09-22-008-13W2/00	603.1	2240.0	2240.0	vertical	09-22-008-13W2	595182	5502053	595182	5502053
121/05-23-008-13W2/00	603.3	2620.0	2620.0	vertical	05-23-008-13W2	595618	5501485	595618	5501485
111/03-27-008-13W2/00	602.5	2515.3	2514.9	deviated	03-27-008-13W2	594500	5502733	594501	5502725
111/01-33-008-13W2/00	602.8	2557.0	2553.4	vertical	01-33-008-13W2	593642	5504294	593637	5503315
111/16-33-008-13W2/00	603.6	2580.0	2580.0	vertical	16-33-008-13W2	593571	5505471	593571	5505471
141/13-34-008-13W2/00	604.4	2490.0	2490.0	vertical	13-34-008-13W2	594145	5505596	594145	5505596
101/06-02-008-19W2/00	653.9	1994.3	1994.3	vertical	06-02-008-19W2	537418	5496012	537418	5496012
131/06-18-009-06W2/00	626.8	2442.5	2442.5	vertical	06-18-009-06W2	657745	5511268	657745	5511268
141/14-32-009-09W2/00	633.6	2532.2	2519.5	deviated	14-32-009-09W2	629988	5516069	630131	5516102
132/13-36-009-09W2/00	625.8	2462.0	2461.2	vertical	13-36-009-09W2	635972	5516280	635967	5516287
141/08-17-009-10W2/00	616.2	2551.5	2551.5	vertical	08-17-009-10W2	621183	5510349	621183	5510349
142/11-24-009-10W2/00	615.2	2608.0	2608.0	vertical	11-24-009-10W2	626937	5512445	626937	5512445
111/12-07-009-12W2/00	618.0	2195.0	2195.0	vertical	12-07-009-12W2	598948	5508363	598948	5508363
141/10-12-009-12W2/00	610.6	2542.0	2469.7	deviated	10-12-009-12W2	607623	5508760	607843	5508834
121/12-22-009-12W2/00	609.8	2455.0	2455.0	vertical	12-22-009-12W2	603525	5511760	603525	5511760
111/03-03-009-13W2/00	605.7	2485.0	2485.0	vertical	03-03-009-13W2	594405	5505971	594405	5505971
141/08-03-009-13W2/00	611.0	2558.0	2558.0	vertical	08-03-009-13W2	595202	5506489	595202	5506489
111/12-28-009-13W2/00	618.3	2195.0	2195.0	vertical	12-28-009-13W2	592262	5513188	592262	5513188
121/04-01-009-14W2/00	594.1	2242.0	2242.0	vertical	04-01-009-14W2	587292	5505885	587292	5505885
141/12-01-010-09W2/00	626.3	2438.6	2438.6	vertical	12-01-010-09W2	636189	5517446	636189	5517446
191/07-02-010-09W2/00	625.3	2462.0	2448.9	deviated	10-02-010-09W2	635079	5517236	635081	5517129
131/08-16-010-10W2/00	620.5	2075.0	2075.0	vertical	08-16-010-10W2	622403	5520063	622403	5520063
121/09-04-010-11W2/00	616.0	2557.3	2557.3	vertical	09-04-010-11W2	612652	5516840	612652	5516840
191/08-06-010-15W2/00	574.9	2545.0	2474.4	deviated	09-06-010-15W2	570550	5516037	570548	5515829
121/03-10-010-15W2/00	580.8	2495.0	2495.0	vertical	03-10-010-15W2	574539	5516983	574539	5516981
101/16-14-010-17W2/00	584.2	2445.7	2445.7	vertical	16-14-010-17W2	557544	5519664	557544	5519664
121/05-11-011-14W2/00	604.5	2436.0	2435.7	vertical	05-11-011-14W2	584418	5527230	584427	5527220
33-023-00171-00-00	584.6	3608.8	3608.8	vertical	SESW 18-163-95	641916	5422554	641916	5422554
33-023-00177-00-00	592.5	3444.2	3444.2	vertical	SWSW 24-163-97	630330	5420659	630330	5420659
33-023-00189-00-00	660.5	3505.2	3505.2	vertical	NWNW 22-162-101	588887	5411477	588887	5411477
33-023-00216-00-00	666.0	3389.4	3389.4	vertical	NWNW 20-163-102	575736	5420874	575736	5420874
33-023-00221-00-00	604.4	3459.5	3459.5	vertical	NWNW 10-163-98	617352	5424808	617352	5424808
33-023-00223-00-00	648.3	3365.6	3365.6	vertical	NWNE 21-163-98	616612	5421571	616612	5421571
33-023-00224-00-00	603.5	3504.0	3224.0	vertical	SESW 33-164-98	616093	5426792	616388	5426991
33-023-00233-00-00	589.8	3293.4	3293.4	vertical	SWNE 11-163-97	629440	5424680	629440	5424680
33-023-00234-00-00	590.7	3305.6	3305.6	vertical	SESW 33-164-97	625756	5427002	625756	5427002

33-023-00251-00-00	643.1	2697.5	2697.5	vertical	SWNE 14-163-99	610193	5422696	610193	5422696
33-023-00253-00-00	629.4	3332.1	3332.1	vertical	NWSE 3-163-99	608530	5425440	608530	5425440
33-023-00261-00-00	647.7	3316.5	3316.5	vertical	SENE 28-163-102	578369	5418919	578369	5418919
33-023-00307-00-00	676.4	3374.1	3374.1	vertical	NWNW 27-163-101	588558	5419445	588558	5419445
33-023-00313-00-00	644.7	3316.2	3316.2	vertical	NWNW 25-163-102	582211	5419210	582211	5419210
33-023-00317-00-00	654.4	3291.8	3291.8	vertical	NENE 13-163-102	583322	5422618	583322	5422618
33-023-00327-00-00	683.4	3384.2	3384.2	vertical	SWNE 30-163-100	594340	5419196	594340	5419196
33-023-00340-00-00	611.4	3017.8	3017.8	vertical	SWNW 31-163-97	622283	5418011	622283	5418011
33-023-00387-00-00	580.6	2874.3	2874.3	vertical	NESW 6-163-95	641813	5426187	641813	5426187
33-023-00445-00-00	630.6	3435.7	3435.7	vertical	SWSE 9-162-96	636000	5414183	636000	5414183
33-023-00459-00-00	662.6	2612.1	2612.1	vertical	NENW 8-163-100	595143	5424212	595143	5424212
33-023-00460-00-00	645.6	2651.8	2651.8	vertical	SWSW 7-163-99	603052	5423456	603052	5423456
33-023-00741-00-00	670.0	2682.2	2682.2	vertical	SWSE 8-163-100	595875	5423211	595875	5423211

- 19 wells with brine samples analysed for lithium concentration in the project area.

Well ID	Reference Elevation - Kelly Bushing (m)	Measured Depth (m)	True Vertical Depth (m)	Vertical or Deviated Well	Surface Location	Surface Hole Easting (NAD83)	Surface Hole Northing (NAD83)	Bottom Hole Easting (NAD83)	Bottom Hole Northing (NAD83)
103/01-02-001-12W2/00	618.6	3731	3731	vertical	01-02-001-12W2	609801.4	5428760	609801.4	5428760
101/14-33-002-12W2/00	598	2421	2421	vertical	14-33-002-12W2	605332.5	5447568	605332.5	5447568
121/09-13-002-22W2/00	761.3	3270.1	3270.1	vertical	09-13-002-22W2	513400.5	5441333	513400.5	5441333
141/16-20-003-12W2/00	593.3	2374	2374	vertical	16-20-003-12W2	603468.3	5454117	603463.2	5454116
101/04-19-004-08W2/00	587.2	2476	2476	vertical	04-19-004-08W2	639532.5	5463307	639532.5	5463307
141/01-22-004-19W2/00	755.6	3075	3075	vertical	01-22-004-19W2	538242.9	5461757	538242.9	5461757
111/02-05-005-21W2/00	754.6	2879	2862.8	deviated	02-05-005-21W2	514973.6	5466460	515093.8	5466344
101/07-27-007-06W2/03	612	1732.5	1732.5	vertical	07-27-007-06W2	663558.7	5495102	663558.7	5495102
101/02-22-007-09W2/00	614.9	1941	1940.7	vertical	02-22-007-09W2	634094.7	5492296	634094.6	5492301
141/13-02-007-11W2/00	610.9	2000	2000	vertical	13-02-007-11W2	615469.8	5488153	615469.8	5488153
121/09-03-007-11W2/00	614.5	1932	1932	vertical	09-03-007-11W2	615059.5	5487701	615059.5	5487701
141/14-12-007-11W2/00	606.8	1902	1900.9	vertical	14-12-007-11W2	617572.5	5489933	617576.8	5489935
121/10-03-008-05W2/00	603.9	2475	2475	vertical	10-03-008-05W2	673057	5499015	673057	5499015
101/14-36-008-13W2/00	615.3	2581	2581	vertical	14-36-008-13W2	597644.8	5505630	597644.8	5505630
111/11-02-009-13W2/00	613.5	2593	2590.4	vertical	11-02-009-13W2	596055	5506763	596033.9	5506773
141/11-17-009-21W2/00	764.5	2624	2624	vertical	11-17-009-21W2	513002.8	5509358	513002.8	5509358
33-023-00259-00-00	704.4	3587.8	3587.8	vertical	SESW 8-161-99	605305	5404070	605305	5404070
33-023-00273-00-00	698.6	2910.8	2910.8	vertical	SENW 8-161-99	605239.6	5404887	605239.6	5404887
33-023-00327-00-00	683.4	3384.2	3384.2	vertical	SWNE 30-163-100	594340.3	5419196	594340.3	5419196

Appendix 3: Figures and Tables within the JORC

Figure A-1: Wells drilled through the Duperow Formation with Petrophysical Evaluations completed for the Resource Assessment (279 wells)

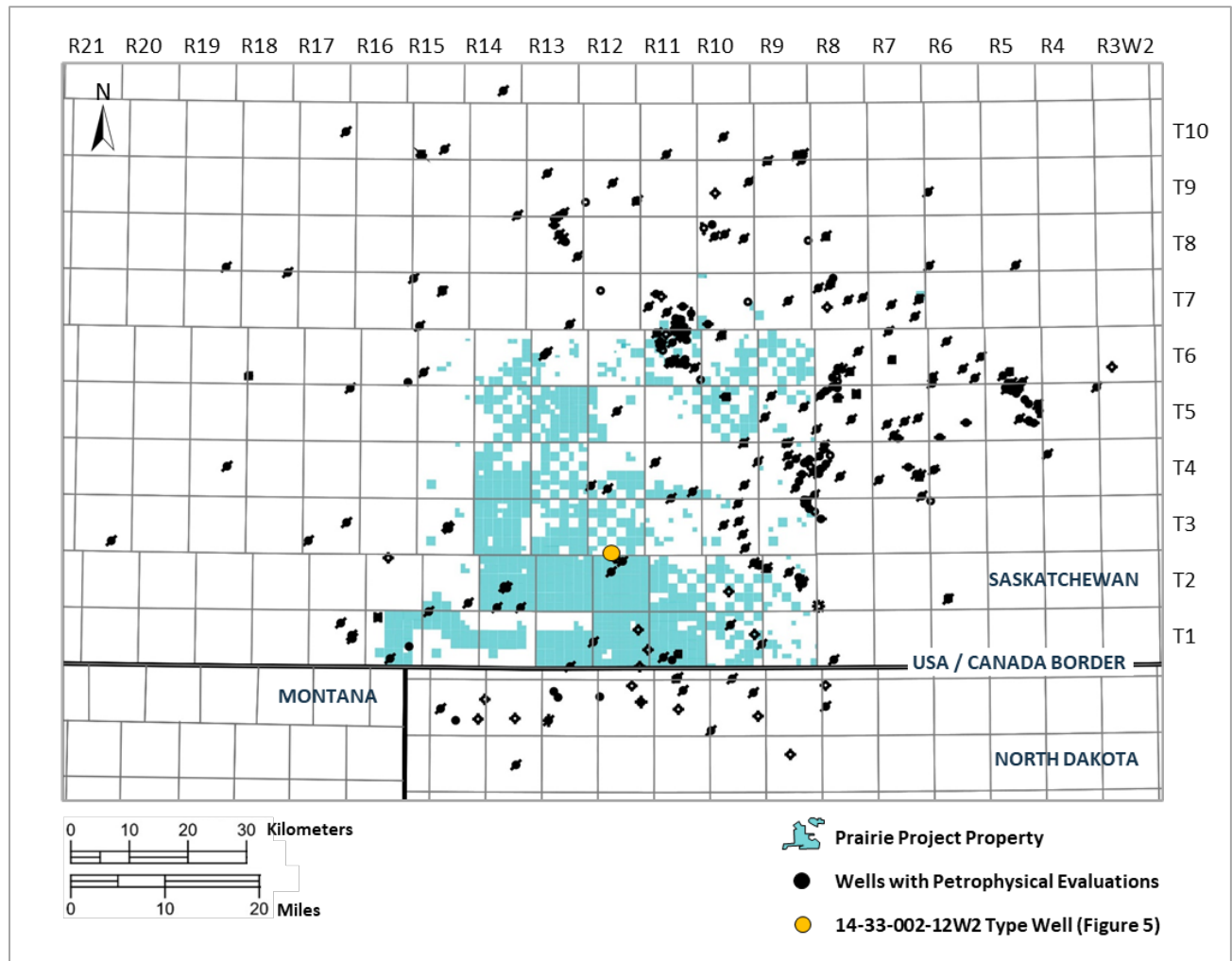


Figure A-2: Stratigraphic Cross section of wells in Saskatchewan with lithium concentrations within and adjacent to Arizona Lithium's Property

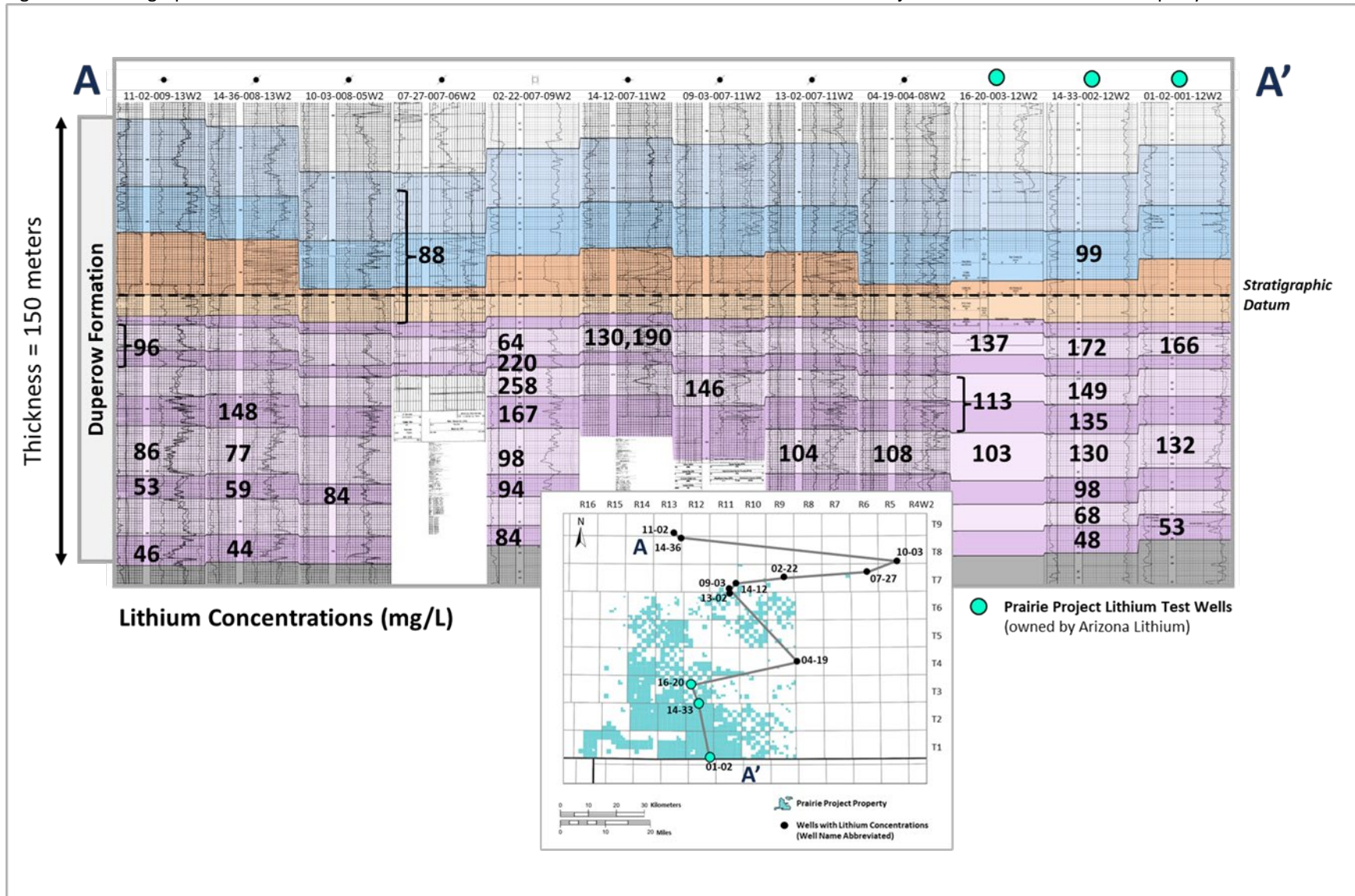


Figure A-3: West to East Cross Section Across the Property

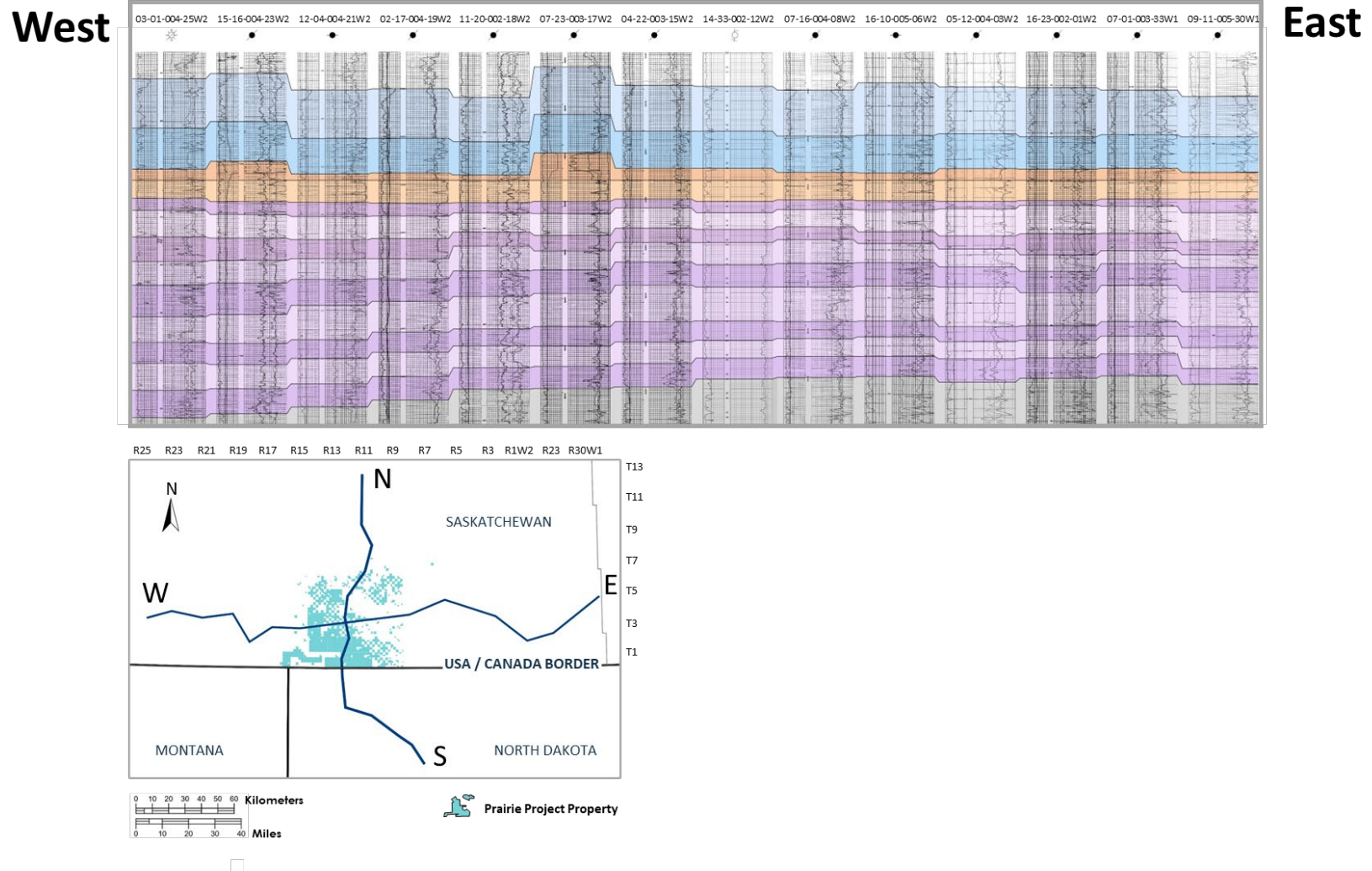
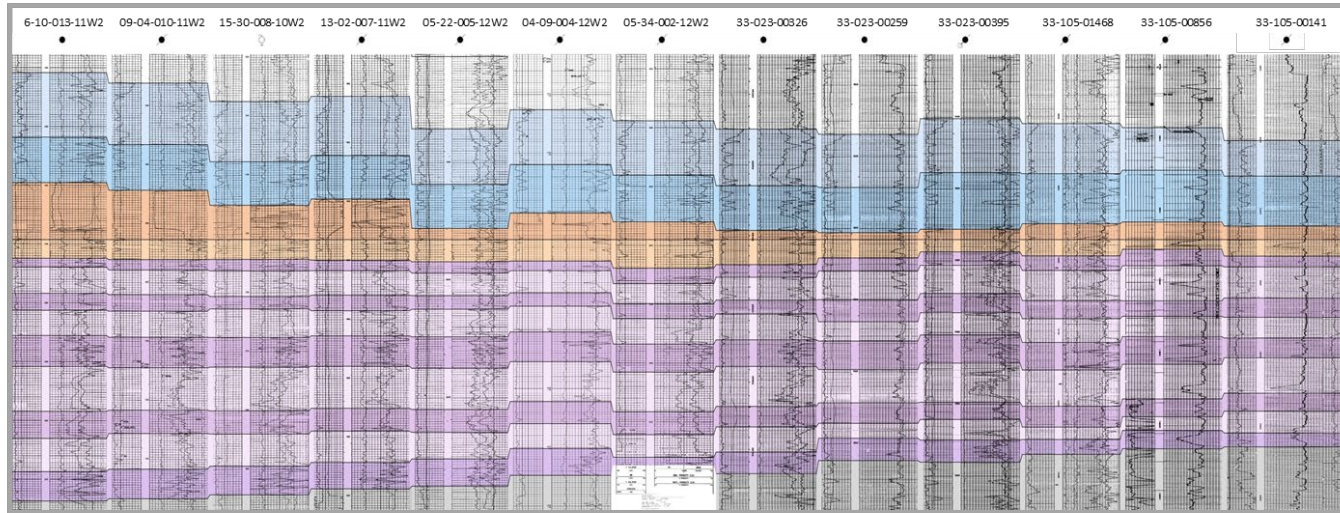


Figure A-4: North to South Cross Section Across the Property

North



South

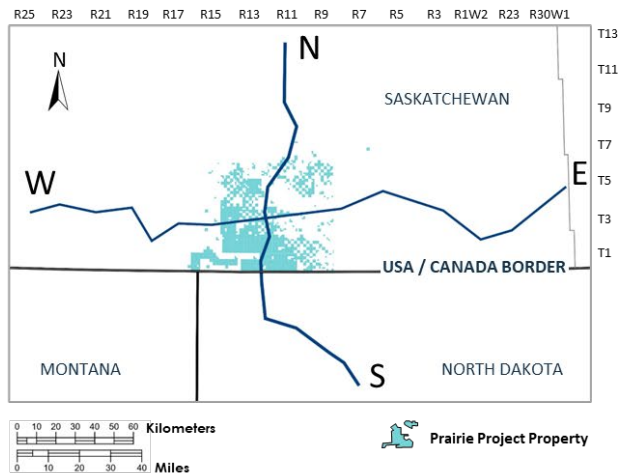


Table A-1: Representative lithium concentrations within the Indicated Resource area based on the mass volume and brine volume estimates.

Producing Formations	Representative Lithium Concentration (mg/L)		Li Mass (tonnes)		LCE Mass (tonnes)		
	Inferred	Indicated	Inferred	Indicated	Inferred	Indicated	Total
Seward	98	98	23,887	65,872	127,151	350,637	477,787
Flat Lake	95	95	2,131	5,789	11,343	30,815	42,158
Upper Wymark	142	159	46,366	113,482	246,806	604,065	850,871
Middle Wymark	120	127	181,550	457,630	966,391	2,435,964	3,402,355
Lower Wymark	93	96	37,188	102,663	197,952	546,475	744,427
Saskatoon	55	56	44,358	111,562	236,118	593,845	829,962
Total	101	106	340,000	850,000	1,800,000	4,500,000	6,300,000

Table A-2: Sensitivity Analysis to Price Variation (8% Discount Rate)

Parameter	Low Price Case (-25%) 15,750 \$/tonne	Base Price Case 21,000 \$/tonne	High Price Case (+25%) 26,250 \$/tonne
NPV Pre-Tax (\$ millions)	205	448	691
NPV Post-Tax (\$ millions)	133	312	491
IRR Pre-Tax (%)	15.8	23.9	31.4
IRR Post-Tax (%)	13.7	20.4	26.4

Table A-3: Sensitivity Analysis to Initial CAPEX Variation (8% Discount Rate)

Parameter	Low CAPEX Case (-25%) \$251M	Base CAPEX Case \$334M	High CAPEX Case (+25%) \$418M
NPV Pre-Tax (\$ millions)	526	448	369
NPV Post-Tax (\$ millions)	390	312	234
IRR Pre-Tax (%)	31.8	23.9	18.9
IRR Post-Tax (%)	28.0	20.4	15.7

Table A-4: Sensitivity Analysis to OPEX Variation (8% Discount Rate)

Parameter	Low OPEX Case (-25%) \$264M	Base OPEX Case \$353M	High OPEX Case (+25%) \$441M
NPV Pre-Tax (\$ millions)	488	448	407
NPV Post-Tax (\$ millions)	342	312	283
IRR Pre-Tax (%)	25.2	23.9	22.6
IRR Post-Tax (%)	21.5	20.4	19.4

Table A-5: Sensitivity Analysis to Variation in Overall Lithium Recovery (8% Discount Rate)

Parameter	Low Recovery Case 86%	Base Recovery Case 90%	High Recovery Case 94%
NPV Pre-Tax (\$ millions)	405	448	491
NPV Post-Tax (\$ millions)	280	312	344
IRR Pre-Tax (%)	22.5	23.9	25.3
IRR Post-Tax (%)	19.3	20.4	21.5

Figure A-5: Net present value tornado chart for lithium carbonate price, initial CAPEX, OPEX, and overall Li recovery.

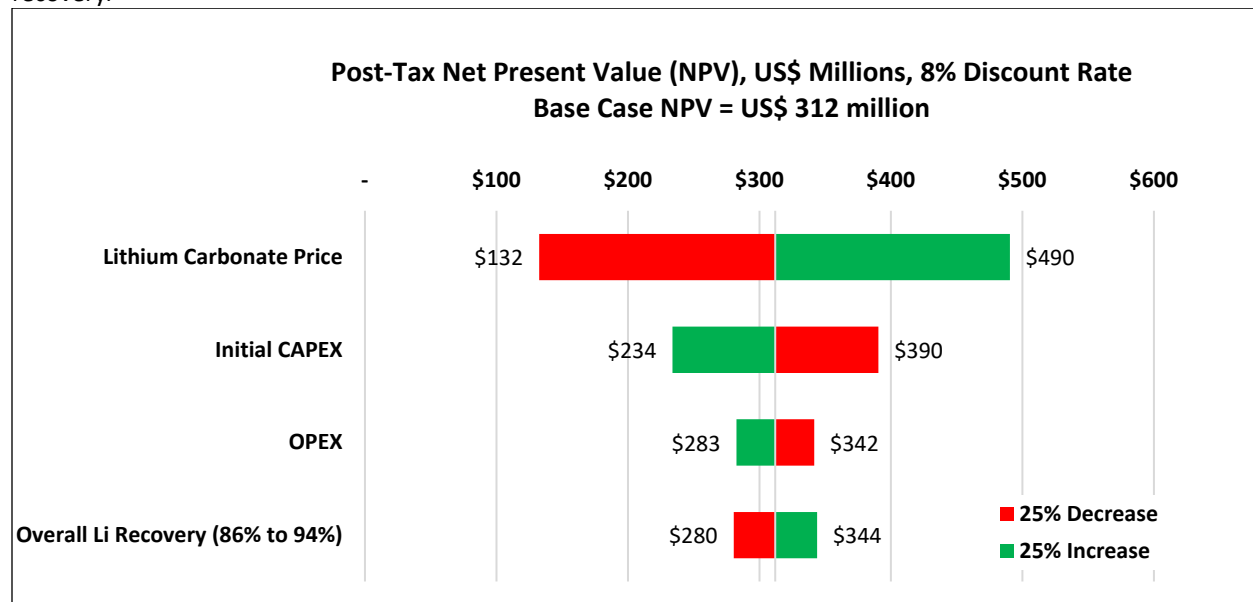


Figure A-6: Internal rate of return tornado chart for lithium carbonate price, initial CAPEX, OPEX, and overall Li recovery.

