

## IMAGION BIOSYSTEMS LIMITED

ASX: IBX

12 June 2025

### Landmark Venture Forum Presentation

Imagion Biosystems (ASX: IBX) (**Company** or **Imagion**), a company dedicated to improving healthcare outcomes through the early detection of cancer, is pleased to advise that IBX will be presenting at the Landmark Venture Forum. This is a by-invitation event, with registration restricted to Landmark's investor members, Family Office members, and other invited guests.

Chief Business Officer, Ward Detwiler, will deliver the attached presentation at the Landmark Venture Forum.

### Authorisation & Additional Information

This announcement was authorised by the Company Secretary of Imagion Biosystems Limited.

— ENDS —

### About Imagion Biosystems

Imagion Biosystems is developing a new non-radioactive and precision diagnostic molecular imaging technology. Combining biotechnology and nanotechnology, the Company aims to detect cancer and other diseases earlier and with higher specificity than is currently possible.

For more information, visit <https://imaginationbiosystems.com/investor-hub/>

### Media & Investor Relations:

Email: [info@imaginationbio.com](mailto:info@imaginationbio.com)

AU: +61 3 9692 7222



# MRI Imaging Agents for Cancer Detection

Imagion Biosystems Limited  
ASX:IBX

A Breakthrough in  
Molecular Magnetic  
Resonance Imaging



# Forward Looking Statements

This investor presentation (Presentation) has been prepared by Imagion Biosystems Limited (Imagion or the Company). This presentation does not constitute or form part of, and should not be construed as, an offer, solicitation or invitation to subscribe for, underwrite or otherwise acquire, any securities of Imagion or any member of its group nor should it or any part of it form the basis of, or be relied on in connection with, any contract to purchase or subscribe for any securities of Imagion or any member of its group, nor shall it or any part of it form the basis of or be relied on in connection with any contract or commitment whatsoever.

This presentation is not a Prospectus and contains summary information about Imagion and its activities, which is current as at the date of this presentation. The information included in this presentation is of a general nature and does not purport to be complete nor does it contain all the information which a prospective investor should consider when making an investment decision. Each recipient of this presentation should make its own enquiries and investigations regarding all information in this presentation including but not limited to the assumptions, uncertainties and contingencies which may affect future operations of Imagion and the impact that different future outcomes may have on Imagion. This presentation has been prepared without taking account of any person's investment objectives, financial situation or particular needs. Before making an investment decision, prospective investors should consider the appropriateness of the information having regard to their own objectives, financial situation and needs, make their own assessment of the information and seek legal, financial, accounting and taxation advice appropriate to their jurisdiction in relation to the information and any action taken on the basis of the information.

The information included in this presentation has been provided to you solely for your information and background and is subject to updating, completion, revision and amendment and such information may change materially. Unless required by applicable law or regulation, no person (including Imagion) is under any obligation to update or keep current the information contained in this presentation and any opinions expressed in relation thereto are subject to change without notice. No representation or warranty, express or implied, is made as to the fairness, currency, accuracy, reasonableness or completeness of the information contained herein. Neither Imagion nor any other person (including its shareholders, directors, officers and employees) accepts any liability and Imagion, its shareholders, its related bodies corporate and their respective directors, officers and employees, to the maximum extent permitted by law, expressly disclaim all liabilities for any loss howsoever arising, directly or indirectly, from this presentation or its contents.

This presentation includes forward-looking statements that reflect Imagion's intentions, beliefs or current expectations concerning, among other things, Imagion's results of operations, financial condition, performance, prospects, growth, strategies and the industry in which Imagion operates. These forward-looking statements are subject to risks, uncertainties and assumptions and other factors, many of which are beyond the control of Imagion. Imagion cautions you that forward-looking statements are not guarantees of future performance and that its actual results of operations, financial condition, performance, prospects, growth or opportunities and the development of the industry in which Imagion operates may differ materially from those made in or suggested by the forward-looking statements contained in this presentation. In addition, Imagion does not guarantee any particular rate of return or the performance of Imagion nor does it guarantee the repayment or maintenance of capital or any particular tax treatment. Investors should note that past performance may not be indicative of results or developments in future periods and cannot be relied upon as an indicator of (and provides no guidance as to) Imagion's future performance. Imagion, its related bodies corporate and each of their respective directors, officers and employees and advisers expressly disclaim any obligation or undertaking to review, update or release any update of or revisions to any forward-looking statements in this presentation or any change in Imagion's expectations or any change in events, conditions or circumstances on which these forward-looking statements are based, except as required by applicable law or regulation.

This presentation and any materials distributed in connection with this presentation are not directed to, or intended for distribution to or use by, any person or entity that is a citizen or resident or located in any locality, state, country or other jurisdiction where such distribution, publication, availability or use would be contrary to law or regulation or which would require any registration or licensing within such jurisdiction.

The distribution of this presentation in certain jurisdictions may be restricted by law and persons into whose possession this presentation comes should inform themselves about and observe any such restrictions.

# Company & Leadership

- Scientifically proven, novel-platform addressing multi billion dollar market.
- Strong clinical value proposition with high margins and reimbursement potential.
- Experienced team in the development of Medical Device and Medical Imaging technologies.
- Track record of successful regulatory approvals for image-based technology.
- Commercially focused with experience in bringing new technologies to market.
- Operating as a virtual company with low fixed costs.

## **Robert Proulx** Executive Chairman

Robert has been CEO and Chairman of Imagination since 2015 bringing the technology and company from early proof of concept to clinical stage.



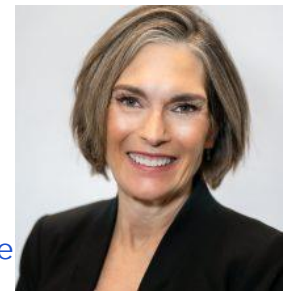
## **Ward Detwiler** Chief Business Officer

Ward co-founded SpinTech MRI, a quantitative MRI software company focused on rapid imaging and new biomarker detection.



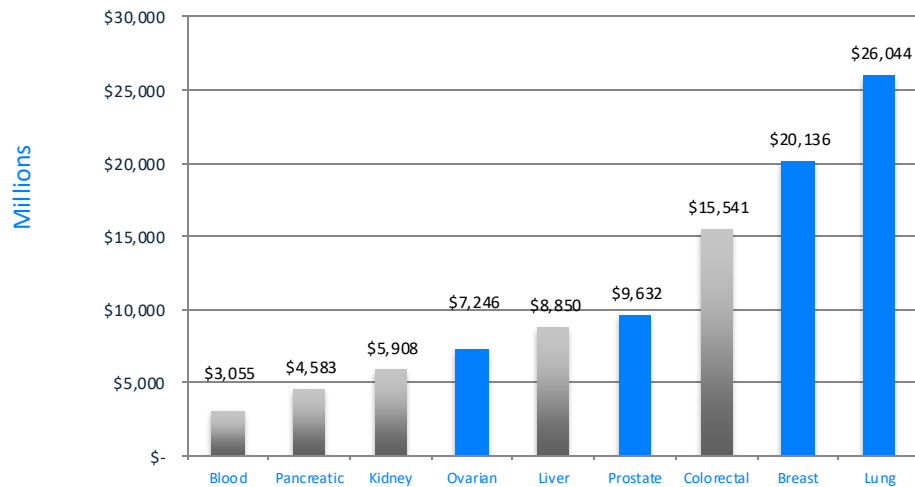
## **Dr. Susan Harvey** Medical Affairs Advisor

Dr. Harvey is an experienced breast radiologist and the co-founder of Curing Women's Cancer. Previously she served as VP of Worldwide Medical Affairs at Hologic and Director of Breast Imaging at Johns Hopkins Medicine.



Over 50% of cancers are diagnosed at late stage<sup>1</sup>.

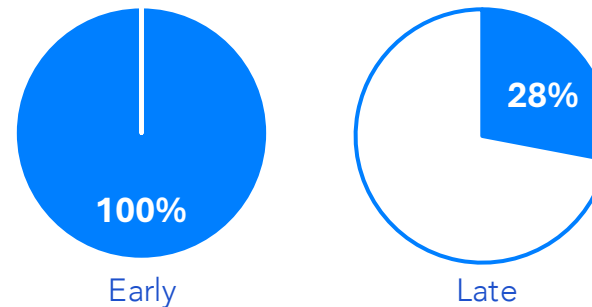
CANCER DIAGNOSTICS - \$100B MARKET  
7% CAGR



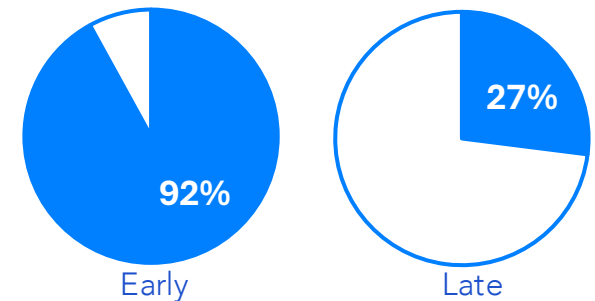
\* Source: Transparency Market Research – Global Cancer Diagnostics Market 2014-2020

5- YEAR SURVIVAL RATE  
DEPENDING ON EARLY OR LATE  
DIAGNOSIS:

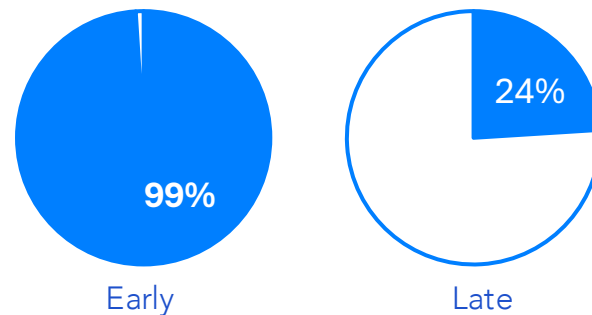
Prostate Cancer



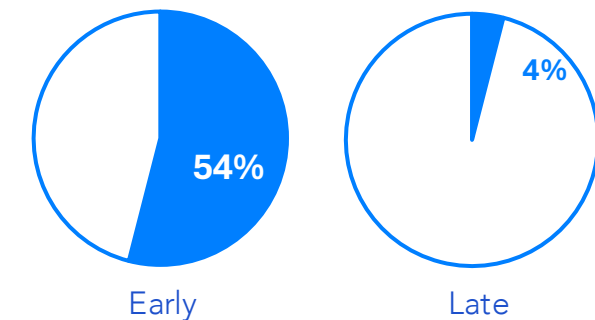
Ovarian Cancer



Breast Cancer



Lung Cancer



1) <https://pubmed.ncbi.nlm.nih.gov/35298272/>

# The Unmet Need

Getting to certainty takes too long.



## Screening

Indicates risk, but non-diagnostic. Requires confirmation before treatment.



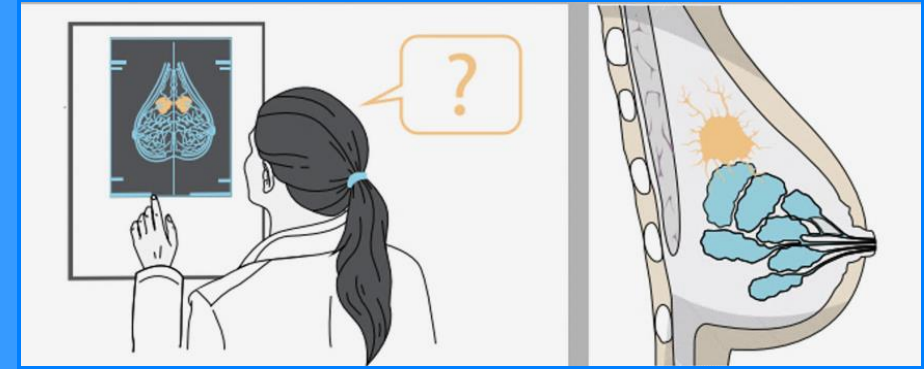
## Imaging

Identify "suspicious lesions" but can't distinguish between benign or malignant.

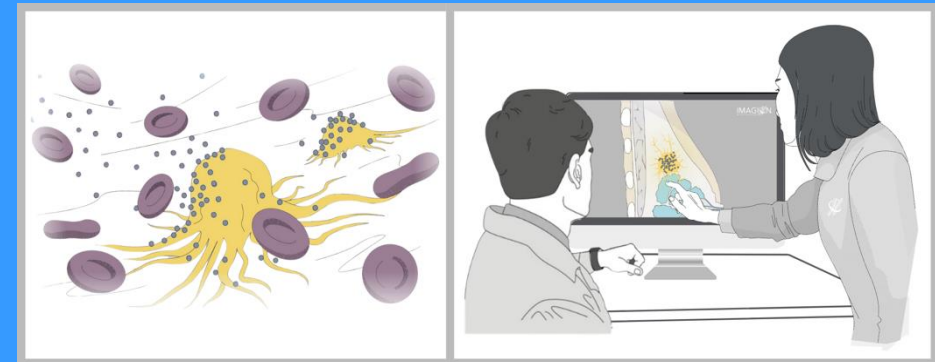


## Biopsy

Painful, complicated, error prone and challenging. Pathology assessments can take days.



**Conventional Imaging** provides anatomical context but is not specific and can only identify a region of interest.

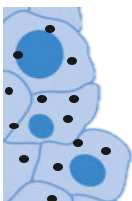


**MagSense<sup>®</sup> Imaging** uses molecularly targeted imaging agents to produce a distinct image pattern indicating the presence of a tumor.

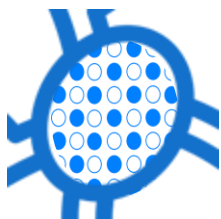
# How MagSense® molecular MRI works



MagSense particles are coated with unique targeting moiety and administered before MRI

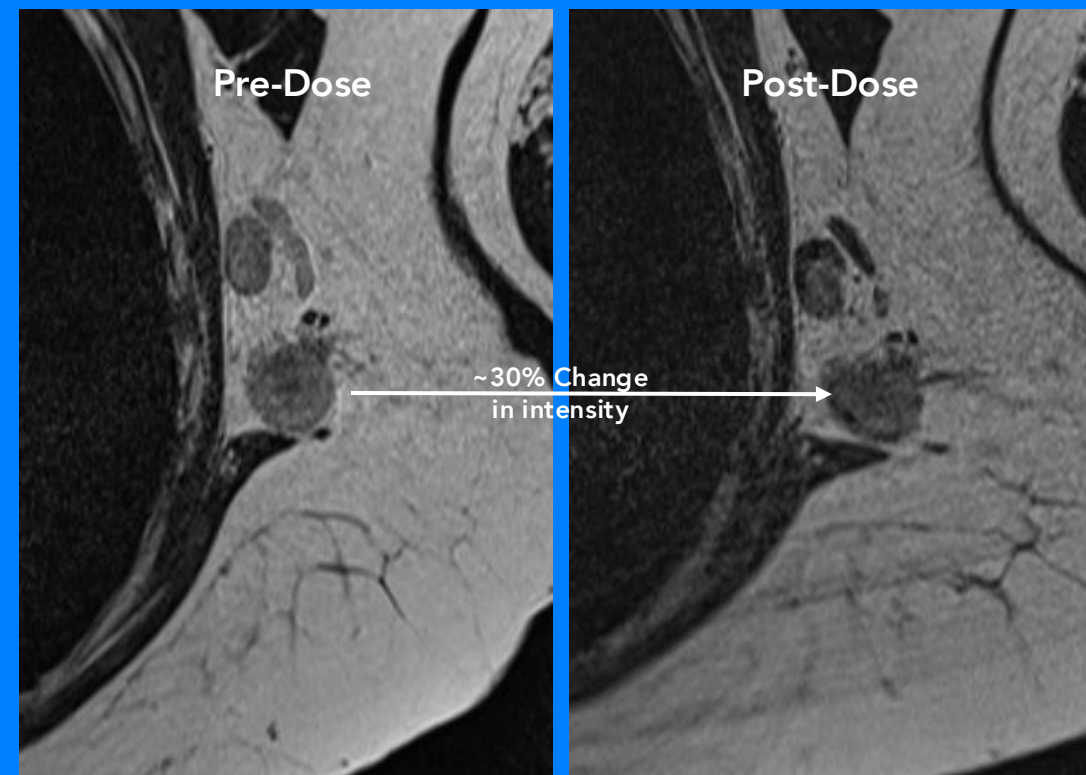


MagSense particles only bind to target type of cancer cells, if present



MagSense produces an identifiable change in image contrast which is easily detected

*MagSense® nanoparticles enable molecular imaging by producing an identifiable change in image contrast when cancer cells are present*





# MagSense® mMRI Technology

## Transforming molecular imaging



### Specific

Provides molecular confirmation of cancer, not just "suspicion".



### Safer

No radioactivity.  
Low dose produces contrast.



### Better Patient Care

Reduces need for biopsies and can detect small tumors.



### MRI-based Detection

Compatible across 50k+ MRI scanners in use globally.



### Platform Technology

Fits clinical workflow and can be used across many cancers. Theranostics potential.

## Clinical Pipeline



**HER2+ Breast Cancer**  
\$500M TAM  
Ready for Phase 2



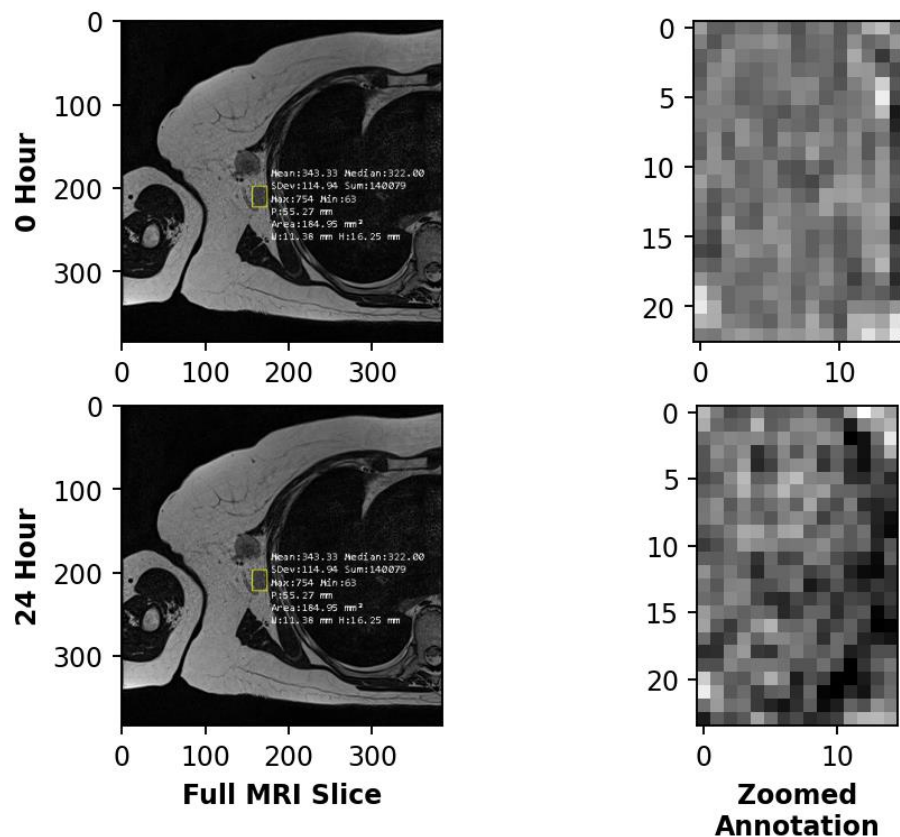
**Prostate Cancer**  
\$1B TAM  
Ready for IND/Phase 1



**Ovarian Cancer**  
\$500M TAM  
Ready for IND/Phase 1

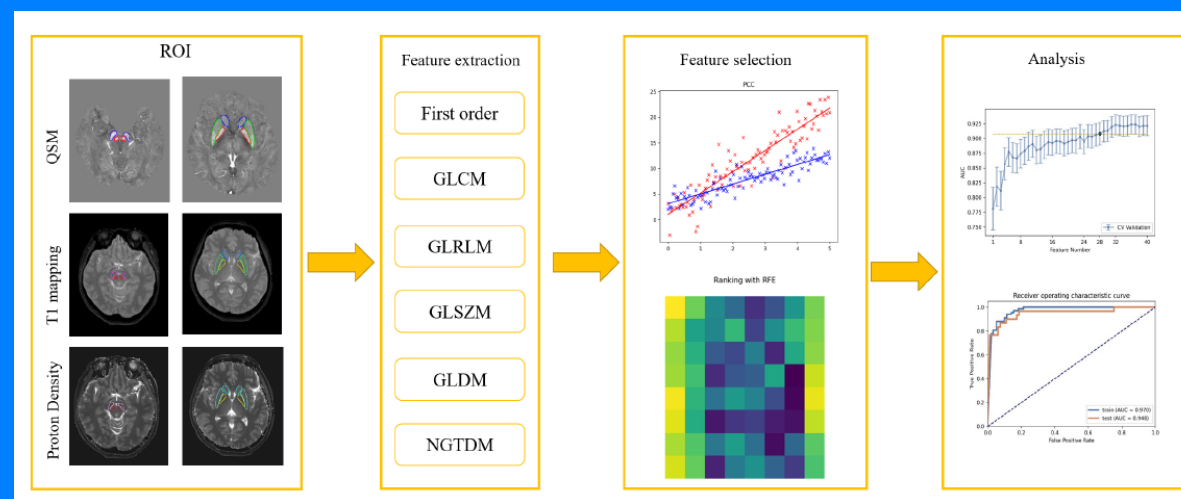
# mMRI Enables AI Detection

Subject 5, Node: 2



Unique quantitative signature allows for Artificial Intelligence and Machine Learning algorithms for automated detection.

Existing iron-based AI diagnostics already show proof of concept.



<https://archive.ismrm.org/2021/3258.html>

# Investment Rationale

## Large Markets with an Unmet Medical Need

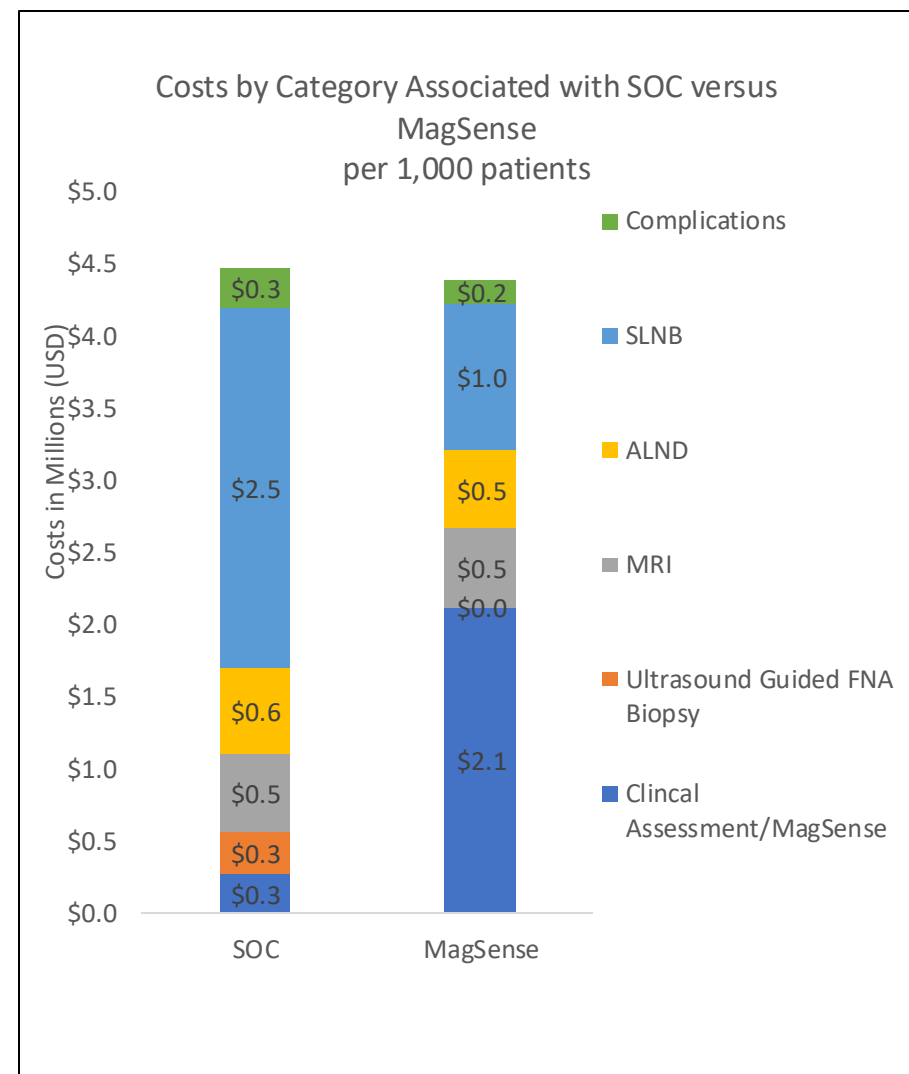
- Global cancer incidence to rise 77% by 2050 with screening & diagnostic imaging costs growing at 6.7% CAGR
- Molecular imaging to-date limited to methods using radioactivity due to MRI lacking specificity.

## Clear Path to Clinical Utility

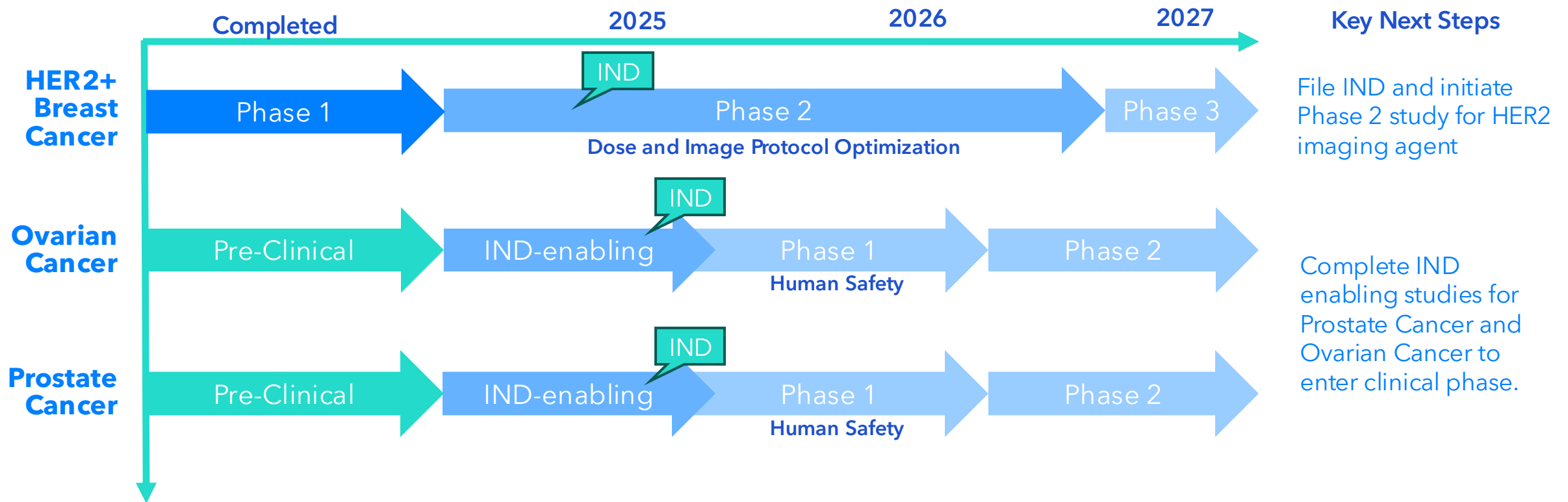
- Almost 100% of contrast media products achieve regulatory approval.
- Fits existing clinical workflows and is compatible across 50,000+ MRI scanners in use globally.
- Combined with AI detection could expand “diagnostic” utility of imaging

## Commercially Attractive for Strategic Partnering

- Health economics support value-based reimbursement pricing while still saving healthcare system costs.
- High gross margins support commercial partnering business model.












# Pathway to Value Creation



# Strategic Partnering

Incumbents continue making attractive deals for differentiated clinical-stage assets

Strategic	Target	Value AUD	Year	Notes
 LANTHEUS™	 RAD RADIOPHARM THERANOSTICS	\$18M	2024	Strategic investment. Part of \$70M AUD financing transaction.
HOLOGIC®	 endomag <sup>+</sup>	\$310M	2024	\$35M revenue at time of transaction. Breast cancer
 Lilly	 ARMO BIOSCIENCES	\$1.6B	2018	Imuno-oncology agent. Acquired following successful Phase 3.
 LANTHEUS™	 Progenics <sup>®</sup> Pharmaceuticals	\$328M Est.	2019	All stock acquisition. Estimated market cap at transaction date.
 NOVARTIS	 Advanced Accelerator Applications	\$3.9B	2018	Acquired in Phase 3, pending FDA clearance. Radioligand therapy.

# Capital Needs and Use of Funds

## Bridge Round

(End Q2 '25)

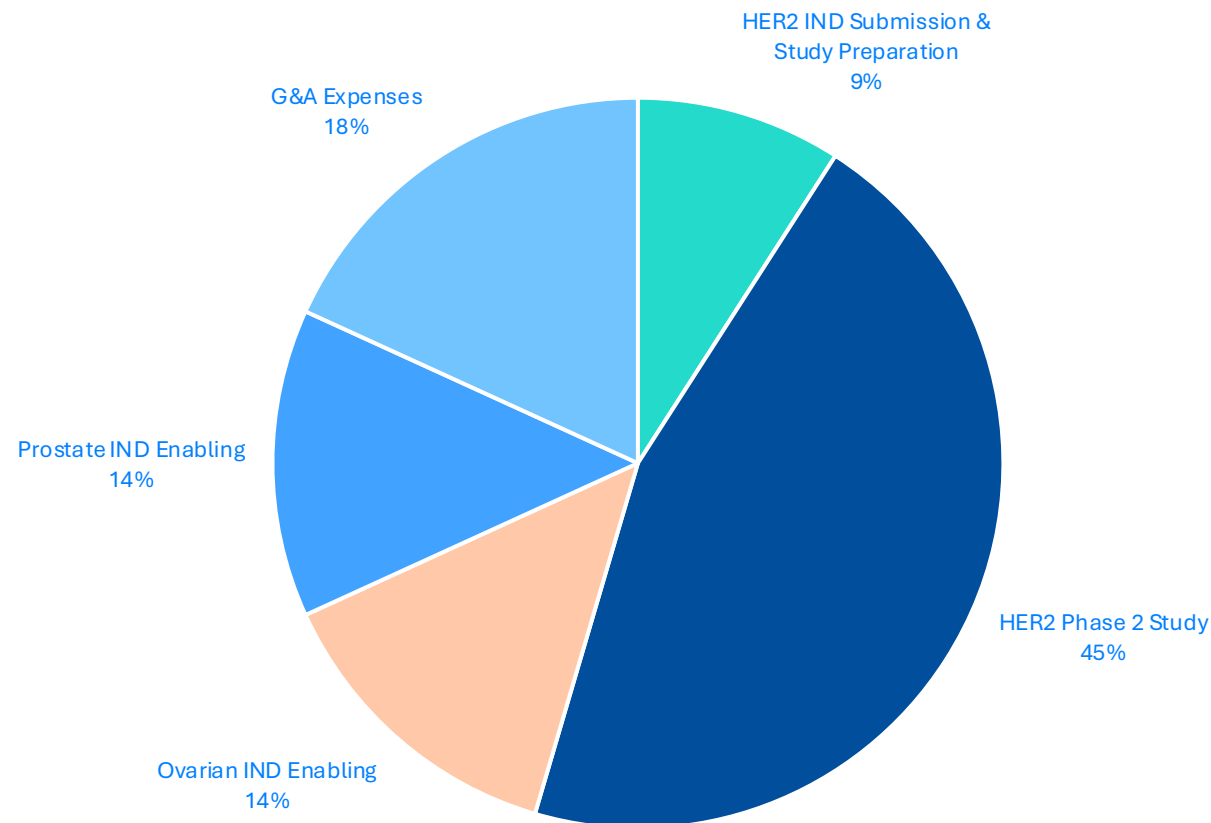
- IND approval of HER2 Phase 2
- CRO engagement
- Imaging protocol optimization
- Clinical lot manufacturing
- Strategic partner engagement

## Clinical Development Round

(End Q4 '25)

- Completion of HER2 Phase 2 study
- Clinical development for Prostate and Ovarian
- IND submission for Phase 1 in Prostate and Ovarian

## Use of Funds





[info@imaginationbio.com](mailto:info@imaginationbio.com) | ASX:IBX