

ram
resources



Perth

Fraser Range



Exploring for Nickel Sulphides in the Fraser Range, WA

June 2014

Nickel Sulphides in Fraser Range

Targeting nickel sulphide deposits in WA's highly prospective Fraser Range belt

- 850sqkm of highly prospective acreage in the heart of WA's Fraser Range belt
- Three key project areas:
 - **Fraser Range South (410sqkm)** - located within 2km of Sirius' Crux anomaly
 - **Fraser Range (270sqkm)** - located 20km west of Sirius' Nova-Bollinger deposit
 - **Fraser Range North (163sqkm)** – adjacent to Segue and Ponton Minerals at the northern end of the Fraser Range belt
- Multiple high-priority drill targets identified from initial exploration
- Aircore drilling to commence mid-year as part of a rolling program to refine several key targets for deep RC and Diamond holes
- Geophysics and geo-chemical work ongoing to identify further high-priority targets



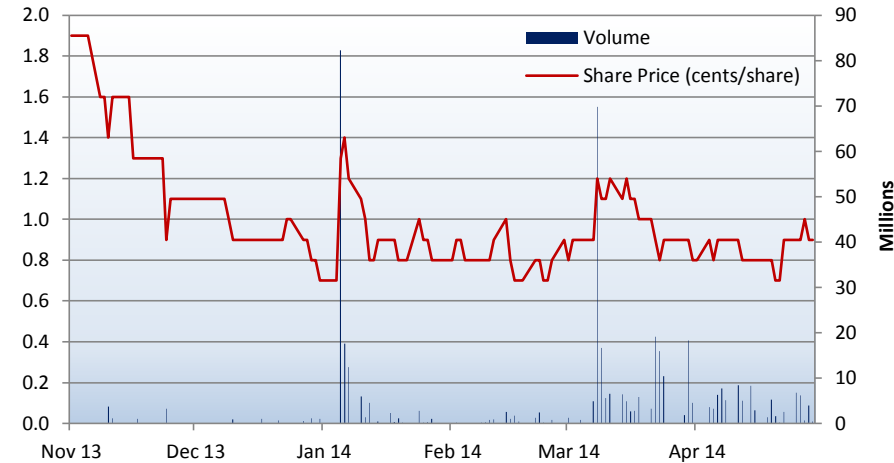
Corporate Snapshot



Capital Structure

ASX Code	RMR
Shares on issue	617.4 M
Options on issue (<i>Ave ex price 2.75c</i>)	197.8 M
Performance shares on issue	28.67 M
Cash (<i>April 2014</i>)	\$2.0 M
Market Cap (<i>at 0.9 cents</i>)	\$5.56 M
Enterprise Value (<i>undiluted at 0.9 cents</i>)	\$3.56 M

Share Price & Volume



Board of Directors

Mr Charles (Bill) Guy

Managing Director

Geologist with over 20 years experience spanning Africa, Australia and South-East Asia

Mr Neville Bassett

Non-Executive Director

Extensive corporate and accounting experience, consulting to a number of ASX listed companies. Neville is a Fellow of The Institute of Chartered Accountants in Australia

Mr Ed Mead

Non-Executive Director

Geologist with more than 18 years of experience in gold and base metals exploration, mine development and mine production

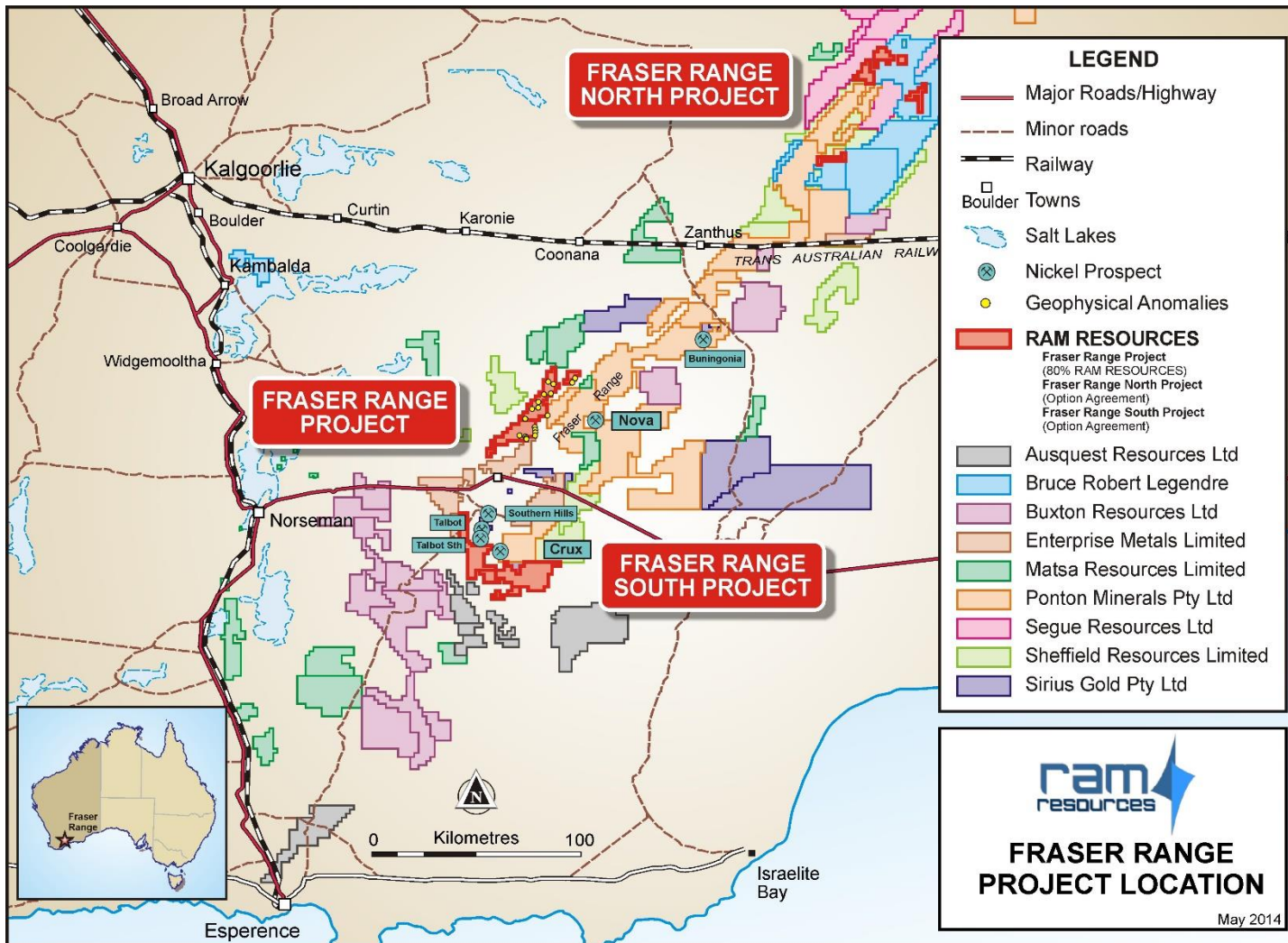
Exploration Team

Dr Vernon Stocklmayer

Qualified geologist with a 45-year career, working in Africa, Australia, Asia and the USA including 20 years with BHP Billiton Exploration with global responsibilities including evaluation of Nickel Projects

Extensive Fraser Range Landholding

Licences in the right part of the belt –North, Central and South



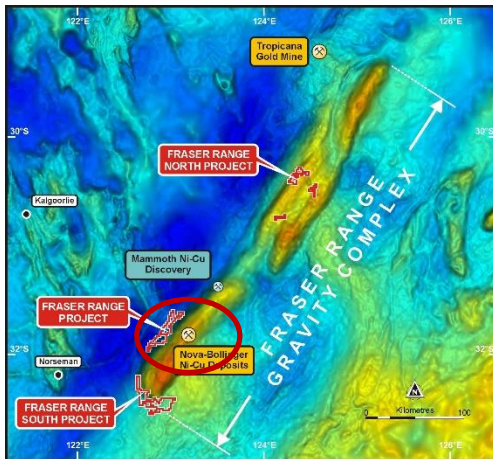
- Licences cover highly prospective areas within the Fraser
- Tenements located along the length of the Fraser Range gravity complex.
- Licences located adjacent to some of the most prospective targets identified in the Fraser Range
- Licences highly prospective for nickel sulphide accumulations

Fraser Range Project

Six High-Priority Anomalies Identified



- Covers 270sqkm located just 20km west of Sirius' Nova -Bollinger deposit
- Six high-priority drill targets identified following geo-chemical sampling, VTEM and MLEM
- Numerous secondary targets to be advanced as part of the 2014 exploration program
- Aircore drilling program to refine MLEM anomaly zones prior to drill testing conductors at depth

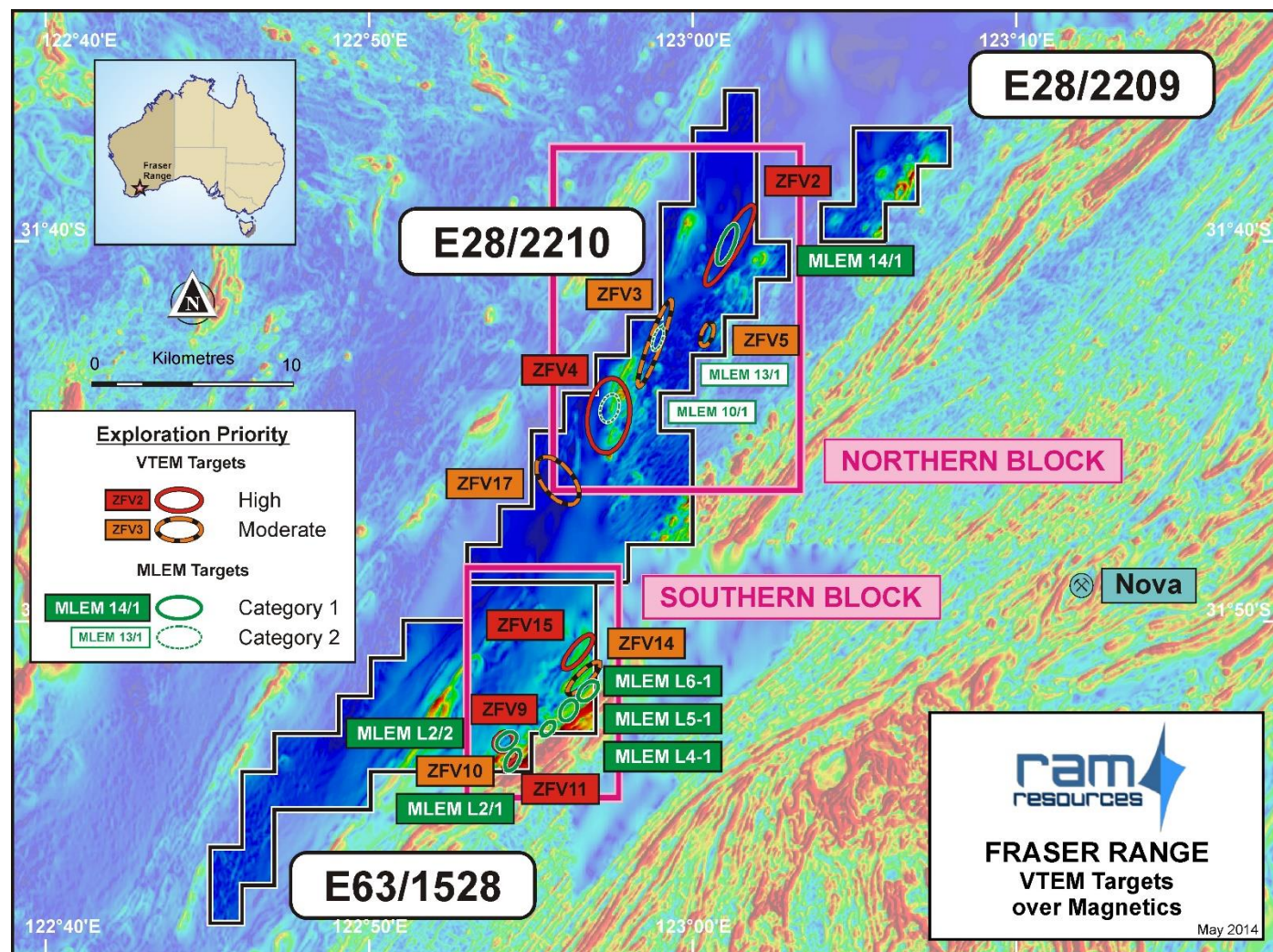


Fraser Range Project

Six High-Priority Anomalies Identified



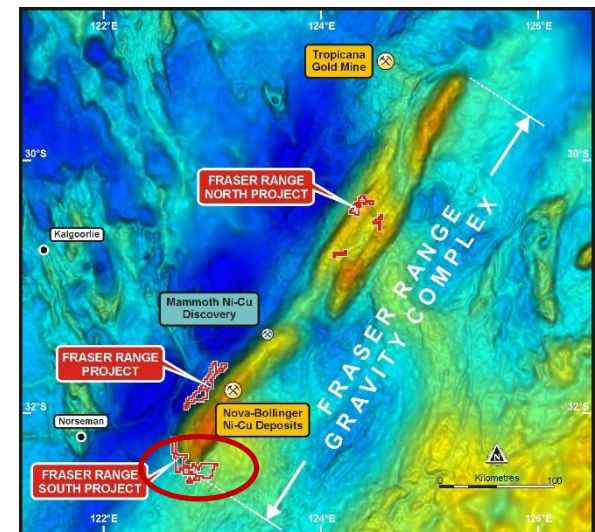
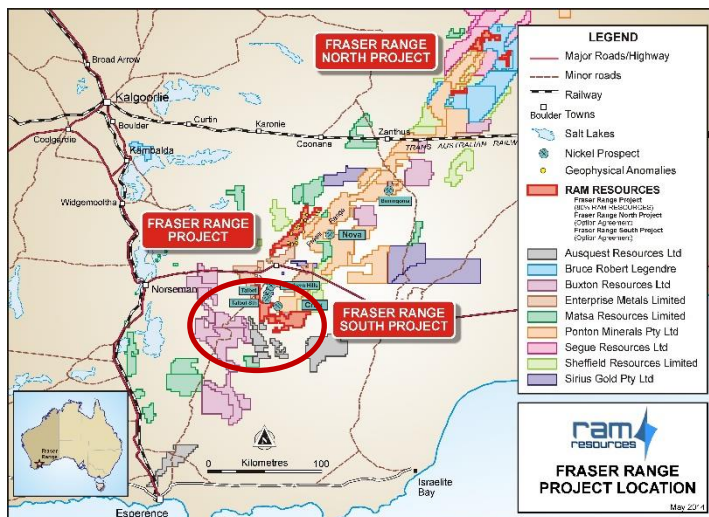
- Six category 1 MLEM drill targets identified
- MLEM L2/2 & L2/1; strong Ni 59ppm, Cu 36 ppm
- MLEM L4/1 & L5/1 typically strong, long-time bedrock conductors
- MLEM L6/1 adjacent interpreted ultramafic
- MLEM L14 lower conductance and shallower; Peak Cu 98 ppm, Ni 53 ppm



Fraser Range South

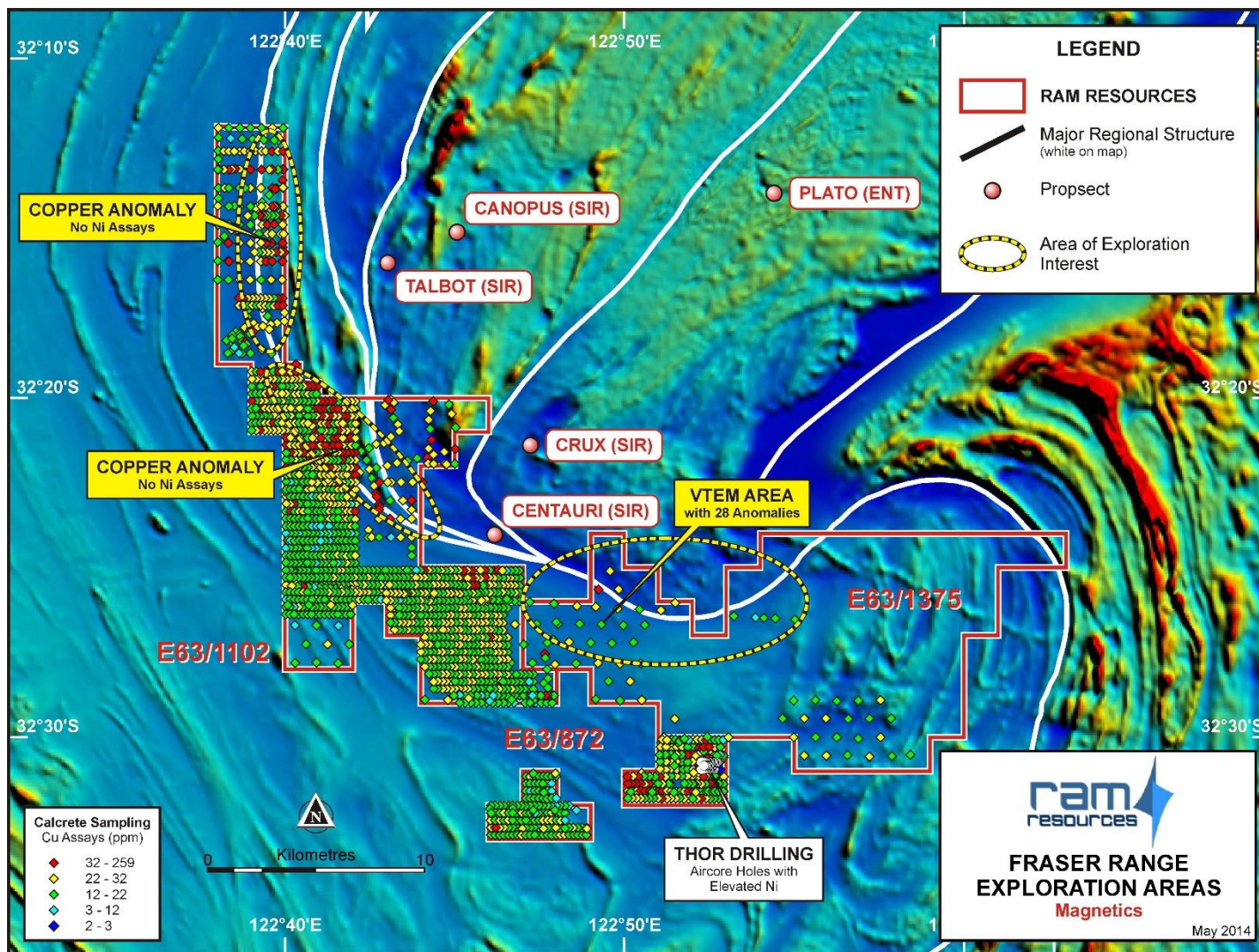
Just 2km from Sirius' Crux anomaly

- Covers 410sqkm encompassing the southern extent of the Fraser Range Gravity Complex, including 30km of the interpreted Fraser Fault Zone which hosts the Mammoth nickel prospect in the north
- Limited historical exploration targeting nickel sulphides
- Strong prospectivity with 28 VTEM anomalies, copper anomalies, and complex structural geology
- Located just 2km west of Sirius' Crux anomaly and south/along strike of Ram's other Fraser Range projects and Sirius' Nova nickel-copper deposit
- Tenements cover the contact between Proterozoic Biranup Zone and the Fraser Range Complex
- Field work underway to identify highest priority drill targets



Fraser Range South

Just 2km from Sirius' Crux anomaly



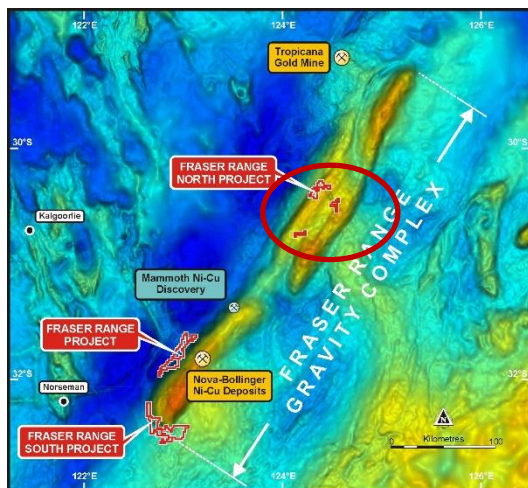
- Elevated copper values in soils provide evidence of strong exploration potential
- Copper anomaly along strike from Crux
- Multiple VTEM anomalies remain untested
- 30km of the interpreted Fraser Fault zone which hosts the Mammoth nickel prospect in the north

Fraser Range North

Strong Results from Limited Exploration



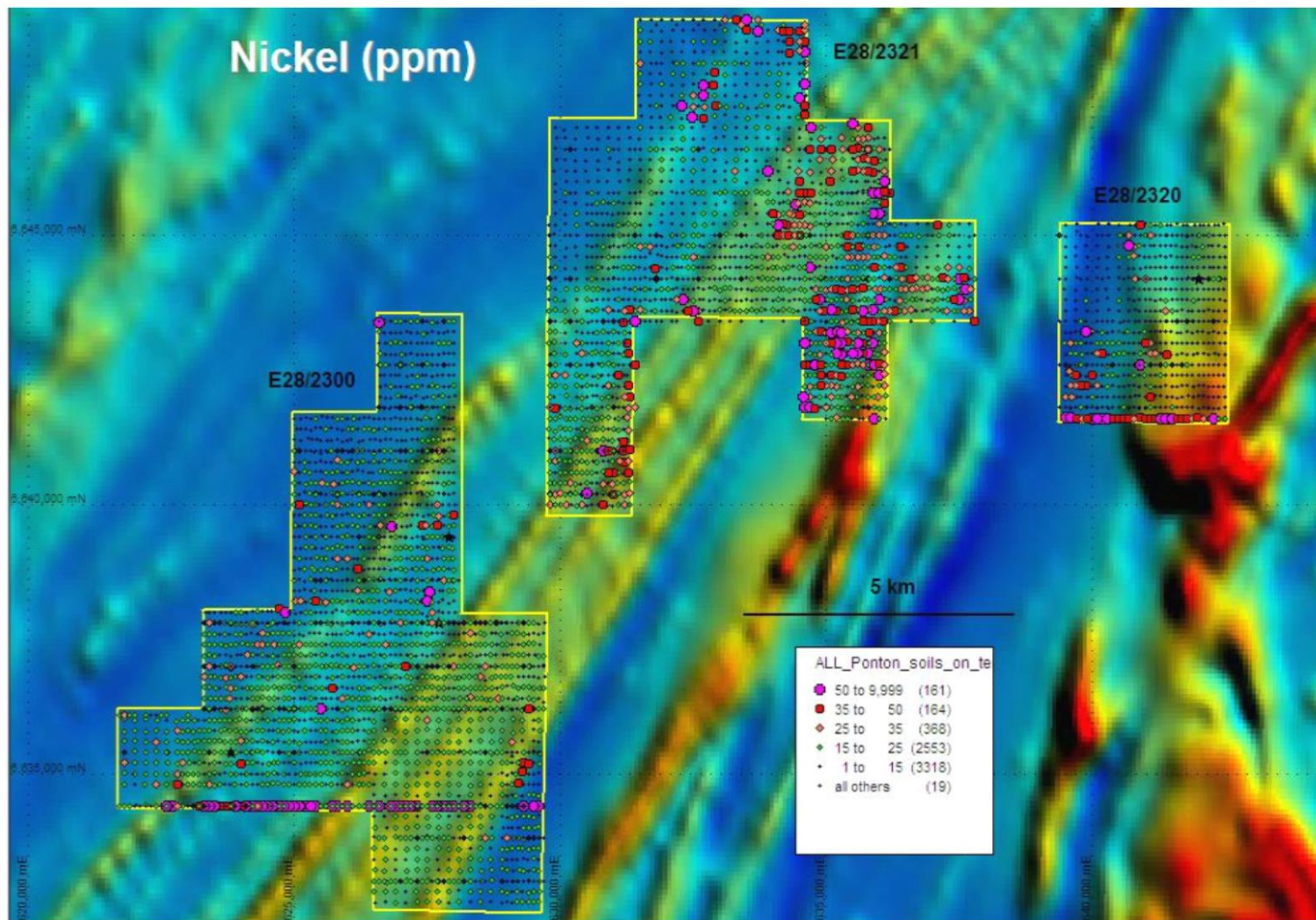
- Project area explored by Ponton Minerals Pty Ltd between 2005 and early 2013
- E28/2320 sits on the southern end of a magnetic eye (interpreted intrusive)
- Historical geochemical results highlight three zones of strong nickel and copper anomalism
- Peak values of 282ppm Ni, 928ppm As, 87ppm Co, 75ppm Cu, 238ppb Pd & 53ppb Pt demonstrates strong potential for mineralisation
- Detailed magnetic survey to be completed by mid-June
- Follow-up ground-based EM planned to prioritise targets for drilling



Fraser Range North

Strong Results from Limited Exploration

Elevated nickel soil values with TMI magnetic background



- Geo-chemical auger program highlighted a number of prospective zones
- E28/2320 sits on the southern end of magnetic eye
- Magnetics show interpreted intrusives
- Peak PGE's
238ppb Pd &
53ppb Pt

High-Impact Exploration On the Way



- High-impact exploration program to be conducted across 3 project areas in 2014
 - Fraser Range Project: Scheduled for drilling throughout 2H 2014
 - Fraser Range North Project: Scheduled for magnetics and MLEM to refine targets for drilling
 - Fraser Range South Project: Scheduled for mapping and geochem to refine targets for drilling

Work Schedule 2014 -2015	Quarter (Jun)	Quarter (Sep)	Quarter (Dec)	Quarter (Mar 2015)	Quarter (Jun 2015)
Regional geology and structure database					
Aerial surveys					
Geochemical sampling					
Ground geophysical surveys					
Permitting, Heritage, Environment					
<i>Reconnaissance aircore drilling programmes</i>					
<i>Follow up targets with deep diamond and RC programs</i>					

Subject to exploration results

- Fraser Range is an emerging nickel sulphide epicentre with proven substantial nickel sulphide and gold deposits
- Ram has more than 850sqkm in the heart of this highly prospective belt, including tenements on the door step of Sirius' Nova-Bollinger deposit
- Preliminary exploration highlights the prospectivity of Ram's tenements
- Six priority targets to be refined via aircore drilling in Q3 2014.
- Geochemical sampling and geophysical programs to define further drill targets underway
- Ram's very low market capitalisation provides exceptional leverage to exploration success

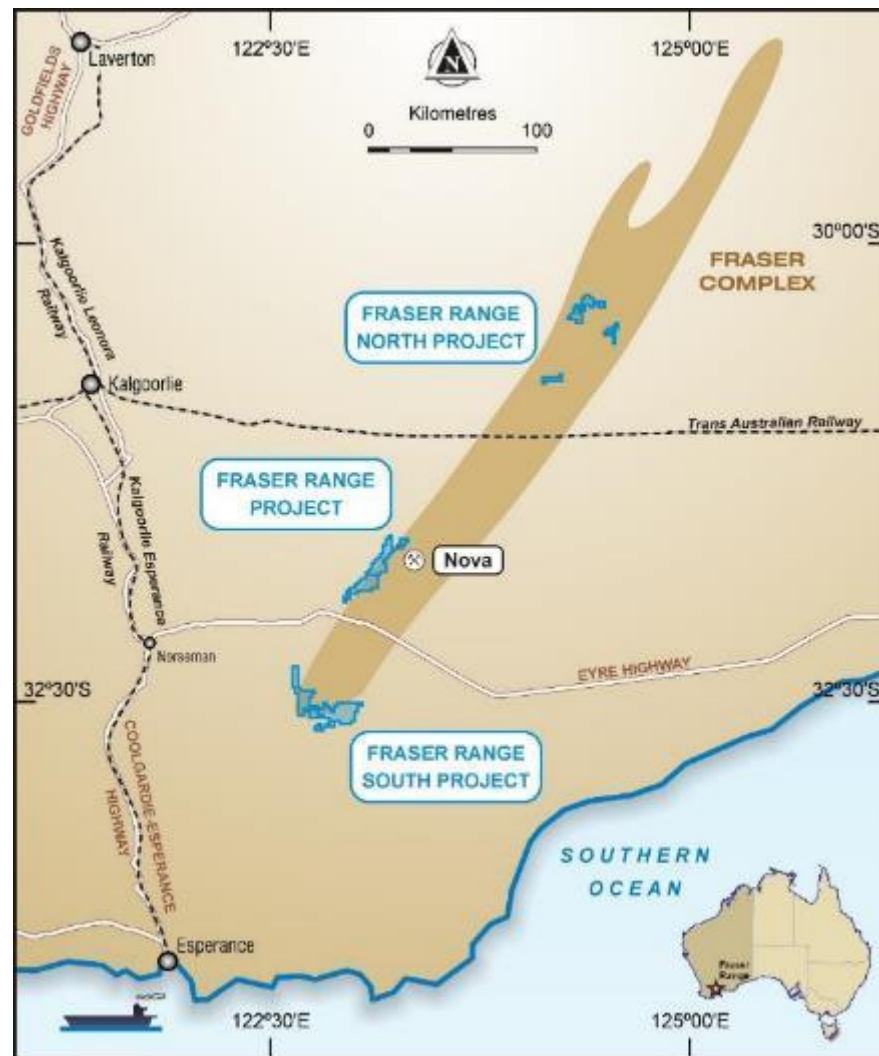
	Located in Fraser Range	Mafic Intrusion	Ni, Cu, Co, Soil Anomalies Present	EM Conductors Present	Nickel Sulphide Deposit Present
Nova Deposit	Y	Y	Y	Y	Y
Fraser Range	Y	Y	Y	Y	TO BE TESTED
Fraser Range North	Y	Y	Y	TO BE TESTED	TO BE TESTED
Fraser Range South	Y	Y	Y	TO BE TESTED	TO BE TESTED

Contact



Bill Guy
Managing Director
Ram Resources Limited
Level 45, 108 St Georges Tce
Perth WA 6000
Mobile +61 408 345 378
Office +61 8 9223 2292
Email bill.guy@Ramresources.com.au

www.ramresources.com.au



Forward Looking Statements

This document contains certain statements, which may constitute “forward looking statements”. Such statements are only predictions and are subject to inherent risks and uncertainties, which could cause actual values, results and performance achievements to differ materially from those expressed, implied or projected in any forward-looking statements. Exploration targets set out in this document are conceptual in nature as there is currently insufficient information to define a Mineral Resource and it is uncertain if further exploration will result in the determination of a Mineral Resource and potential quantity and grade is conceptual in nature

Information and prices on commodities provided herein is for the general information only and should not be relied upon for any purpose. Readers should make their own enquiries as regards the commodities discussed herein and be aware that the market for commodities and prices of those commodities will change over time. Price information has been sourced from Metal Pages.com.

Competent Person Statement

The information in this report that relates to Exploration Results is based on information compiled by Mr Charles Guy a director of the Company, and fairly represents this information. Mr Guy is a Member of The Australian Institute of Geoscientists. Mr Guy has sufficient experience which is relevant to style of mineralisation and type of deposit under consideration and to the activity being undertaken, to qualify as a Competent Person as defined in the 2012 Edition of the Joint Ore Reserves Committee (JORC) Australasian Code for Reporting of Exploration Results, Mineral Resources and Ore Reserves. Mr Charles Guy consents to the inclusion in the report of the matters based on his information in the form and context in which it appears.

Mr Guy, a director, currently holds securities in the Company.

Fraser Range Project: Soil sample locations are picked up by handheld GPS. Samples were logged for soil type. All samples tools were cleaned between samples to avoid contamination. All soil samples were sieved at + 5mm with 1000 gram sample collected at each site in calico sample bags. Lab samples were dried and pulverized. 50g sub-sample analysis. Multi element ICP-MS assay including base and precious metals.

Fraser Range North Auger soil sampling by Ponton Minerals Pty Ltd – some auger holes had both a calcrete and soil sample taken while other holes had a single grab sample taken. Aircore drilling by Ponton Minerals Pty Ltd – a combination of top of hole, bottom of hole, 1.5m and 3m composite sampling throughout drillholes was completed.

Fraser Range South: BHP Calcrete sampling: procedure not detailed. Thor Mining calcrete sampling: grab samples collected from the surface or subsurface. When Calcrete was not present, a sample of subsurface clayey material was collected Aircore drilling a combination of bottom of hole, 3m and 5m composite sampling throughout drillholes was completed.

Any discussion in relation to the potential quantity and grade of Exploration Targets is only conceptual in nature

