

Exploration Update:**Large-Scale Caladan Air-Core Drilling Program Commences**

- **Air-core drilling has commenced** across the **Caladan target area**, including five lines across the **Arrakis Prospect**.
- The **Caladan target area** is defined by a **large-scale, 8km by 3km, fold structure** truncated to the southwest by the Idaho Shear Zone, presenting a **geological architecture** with similarities to several well-endowed gold districts, including the **Kalgoorlie district**.
- The **Caladan** target area is **covered by shallow transported cover**, and broad-spaced **historic drilling is predominantly ineffective**, exposing investors to a **large-scale greenfield exploration opportunity** within the Northeastern Goldfields of Western Australia.
- Recent air-core and RC drilling across a single line has **confirmed primary gold mineralisation associated with a 3km long low-level regolith anomaly**, defining the **Arrakis Prospect**.
- An initial **200m hole spacing** will be applied across broad **800m or 400m spaced lines** testing **6.4km of strike**, with closer spaced holes (100m to 50m) to be drilled across interpreted structures of interest.
- The planned **12,500m, 100 air-core hole** program will be **completed in four to six weeks**, with assay results expected from early July through to the end of August.

For further information or to ask questions in relation to this announcement, please visit our Investor Hub at <https://investorhub.yandalresources.com.au/link/OPQabP>

Contact Us

A: Suite 1, Level 3, 1138 Hay Street,
West Perth WA 6005
T: +61 (0)8 9389 9021
E: yandal@yandalresources.com.au
yandalresources.com.au | **ASX:YRL**

Board and Management

Chris Oorschot	Managing Director/CEO
Greg Evans	Non-Exec Chair
Katina Law	Non-Exec Director
Greg Fitzgerald	Company Secretary

Yandal Resources Ltd (ASX: YRL, “Yandal Resources” or the “Company”) is pleased to advise that its **air-core (AC)** drilling testing the large-scale **Caladan** target area has commenced. The AC program will see drilling completed across **ten lines**, for a planned **12,500m of drilling**, testing the **Caladan** target area over **6.4km of strike** (See **Figure 1**). Lines are **800m spaced** with two 400m spaced lines along strike to the north and south of previous drilling completed across the **Arrakis Prospect** earlier this year. The **Caladan** target area, including the **Arrakis Prospect** (*within E 53/1843, E 53/2304, E 53/2192 and E 53/1882*), is part of the broader **Ironstone Well-Barwidgee Gold Project** (see **Figure 4**), located **60km south** of the **Jundee** mining complex (**ASX: NST**), and **18km north of the recent Siona discovery**, within the Yandal Greenstone Belt.

Caladan is a large-scale exploration target area identified following the completion of a ground gravity survey in early 2024 (see **ASX releases dated 11 June 2024 and 15 July 2024**). In late 2024, initial **air-core drilling was completed on one line across the Caladan target area**, testing the core of the **CAL-01** regolith anomaly. The air-core results returned several significant intercepts, including **11m at 1.7 g/t Au from 97m to the end of hole in 24IWBAC0063** (see **ASX release, 15 January 2025**). All significant intercepts occur within or directly adjacent to the **3km long CAL-01 regolith anomaly**, renamed the **Arrakis Prospect**. A small program of shallow RC drilling was completed to infill around air-core hole **24IWBAC0063**, defining the geometry of the mineralised structure (see **ASX release 25 February 2025**). Subsequent RC drilling then confirmed primary gold mineralisation (see **Figure 2**) and the potential for multiple mineralised structures within a basalt/dolerite host (see **ASX release 30 April 2025**).

Caladan Air-core Program Details

A **12,500m air-core program** has commenced testing the Caladan Fold structure (Caladan target area) and the program includes:

- **Eight 800m spaced drill lines** (See **Figure 1**);
- **Two 400m spaced lines** north and south of the existing Arrakis line of drilling (See **Figure 1**);
- Drill lines across the Caladan Fold will **test approximately 6.4km of strike**;
- **Initial hole spacing of 200m** across each line, with closer-spaced holes within the CAL-01 regolith anomaly and across interpreted lithological boundaries and structures;
- **Routine bottom-of-hole multi-element sampling** to be completed on all holes;
- All holes will be drilled at **-60 ° to the southwest**, with an average drill depth of 100m assumed for the program;

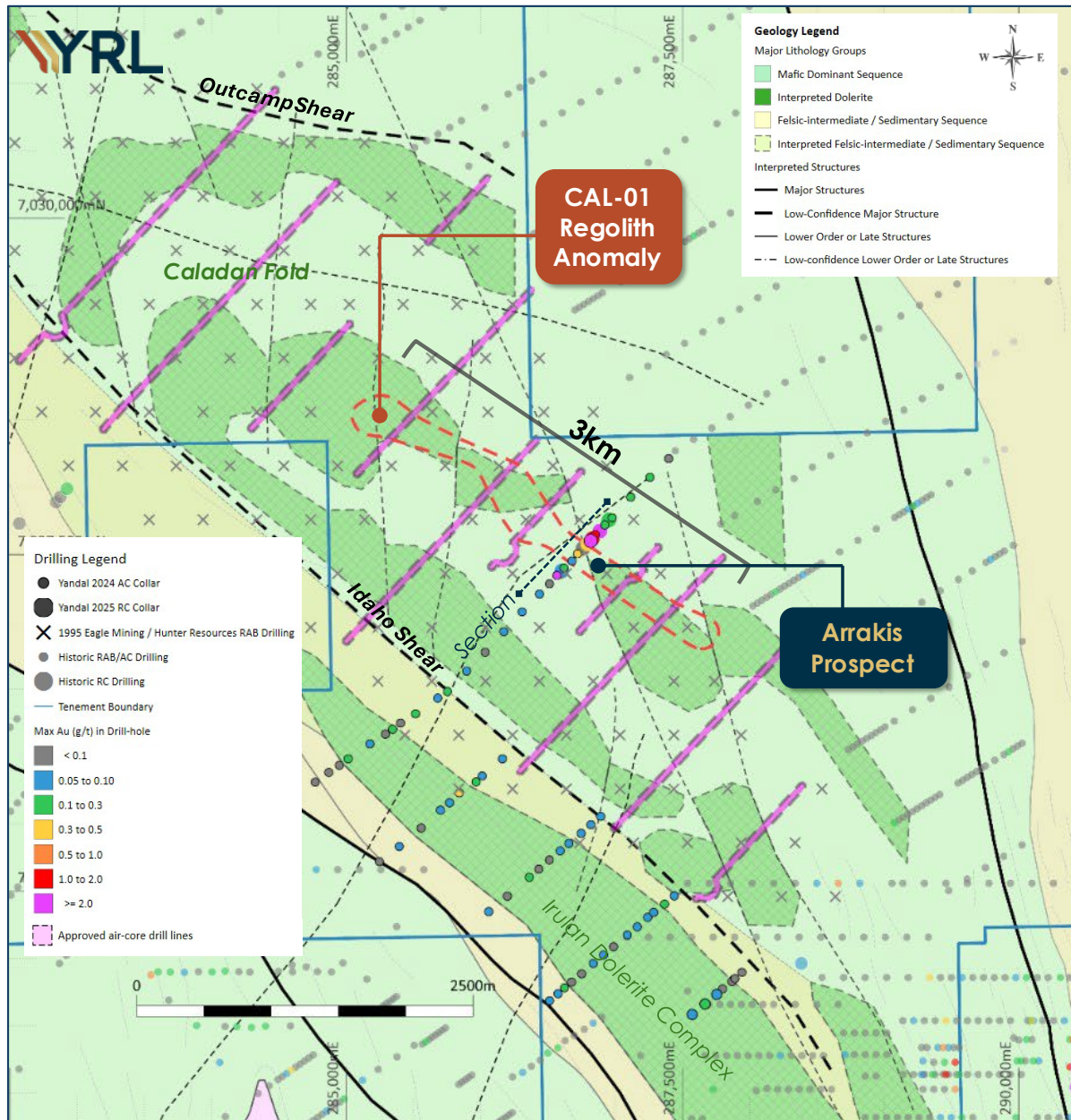


Figure 1: A collar plan over the Caladan target area, showing simplified bedrock geology interpretation across the Caladan and northern Irulan target areas within the IWB Gold Project. The collars of YRL drilling, the historic 1995 RAB drilling, and all historic drilling >20m in depth are plotted. All collars are thematically coloured by max Au (g/t Au). Also plotted are the approved air-core drill lines for the current drill program.

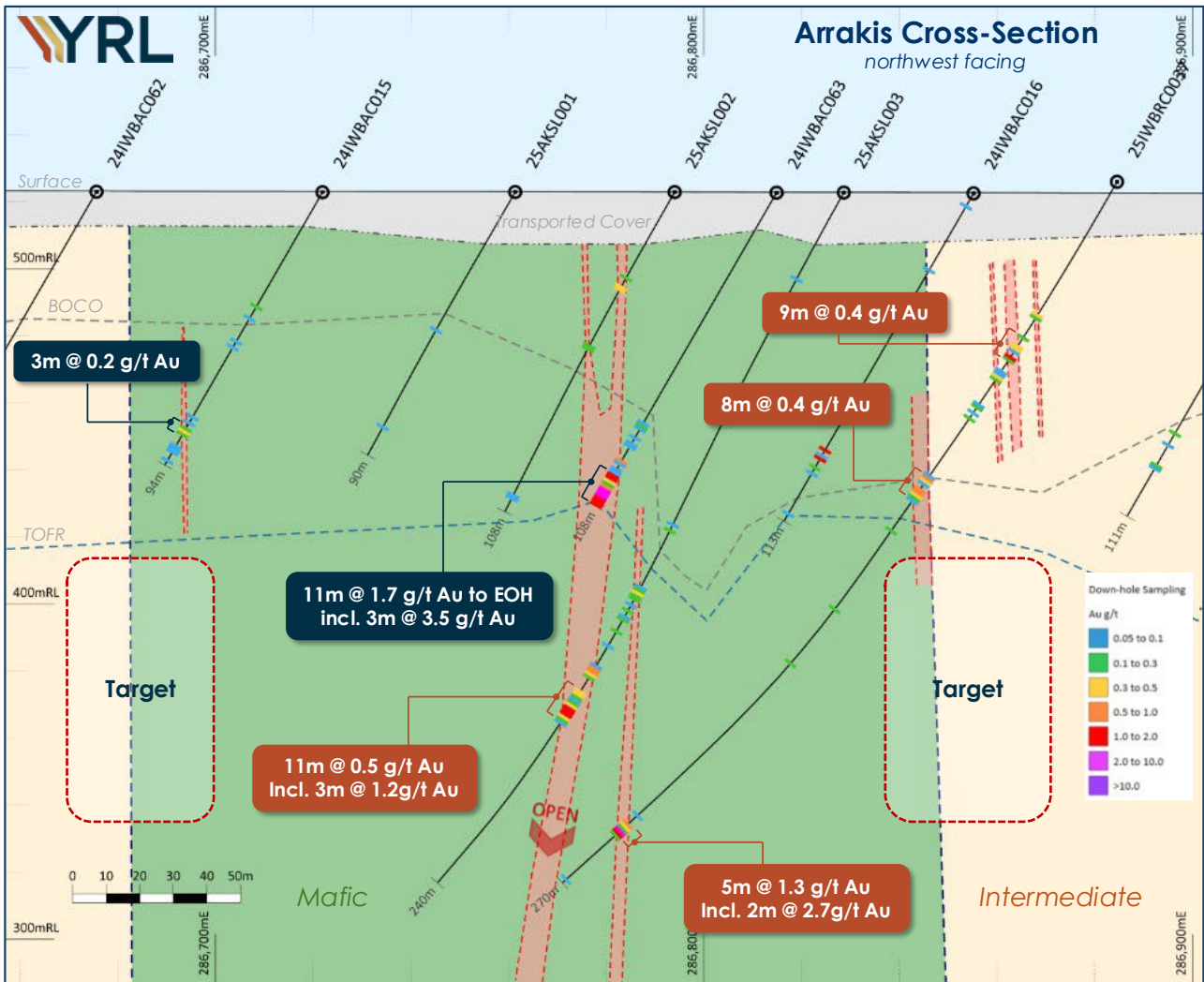


Figure 2: Cross-section showing all drilling results from Arrakis with a simple preliminary interpretation of geology. The section location is shown in **Figure 1**. The section shows all drilling +/-50m away from the section plane.

Caladan Target Area Summary

The **Caladan** target area presents a large-scale northwest plunging (interpreted) fold, truncated by the **Idaho Shear** to the southwest. The **Idaho Shear** is interpreted as a second-order structure linking the **Ockerburry Shear Zone** to the east and the **Barwidgee Shear Zone** to the west (see **Figure 3**). The only systematic drilling across the fold structure was completed in 1995 (see **ASX release 15 July 2024**), where shallow (average depth of 22m) vertical RAB holes on a 400m by 400m spacing were completed. The drilling was designed to penetrate through shallow transported cover (2-20m deep) and sample in-situ upper saprolite clays. A review of this drilling yielded several low-level in-situ saprolite anomalies, the largest of which (the **3km long CAL-01** anomaly) is **situated in the core of the Caladan Fold** (see OBL-01 **Figure 1** above).

The **Caladan Fold** structure is **3km wide, over 8km long**, and lies under loose to well-cemented transported cover (the average depth of transported cover is 8m). The broad structural setting is similar to the Kalgoorlie district, where the Boulder-Lefroy Fault truncates the folded mafic stratigraphy of the Boomerang anticline (see **Figure 3**).

A single line of air-core **drilling completed in 2024** (see **ASX release 15 January 2025**) has confirmed:

- **Strong gold depletion** in the upper portion of the regolith profile;
- The 3km long **CAL-01 anomaly is likely associated with primary mineralisation** hosted within a deformed and altered mafic unit;
- **Gravity highs coincide with fractionated dolerites**, separated by a sequence dominated by variably altered intermediate (andesite) volcanoclastics.

Follow-up **RC drilling completed in early 2025** (see **ASX release 30 April 2025**) suggests:

- **Primary gold mineralisation is present** on the margins of a sub-vertical 20-30m wide shear zone hosted within a mafic unit (basalt and dolerite);
- There is potential for **multiple mineralised structures**, with several remaining untested in fresh rock.

The under-explored nature of the Caladan Fold, combined with several low-level regolith anomalies, resulted in the Caladan target area being ranked as **one of the highest priority target areas within the Company's project portfolio**. Recent drilling results combined with observed geology have reaffirmed the Company's prioritisation of the **Caladan target area within the exploration strategy**.

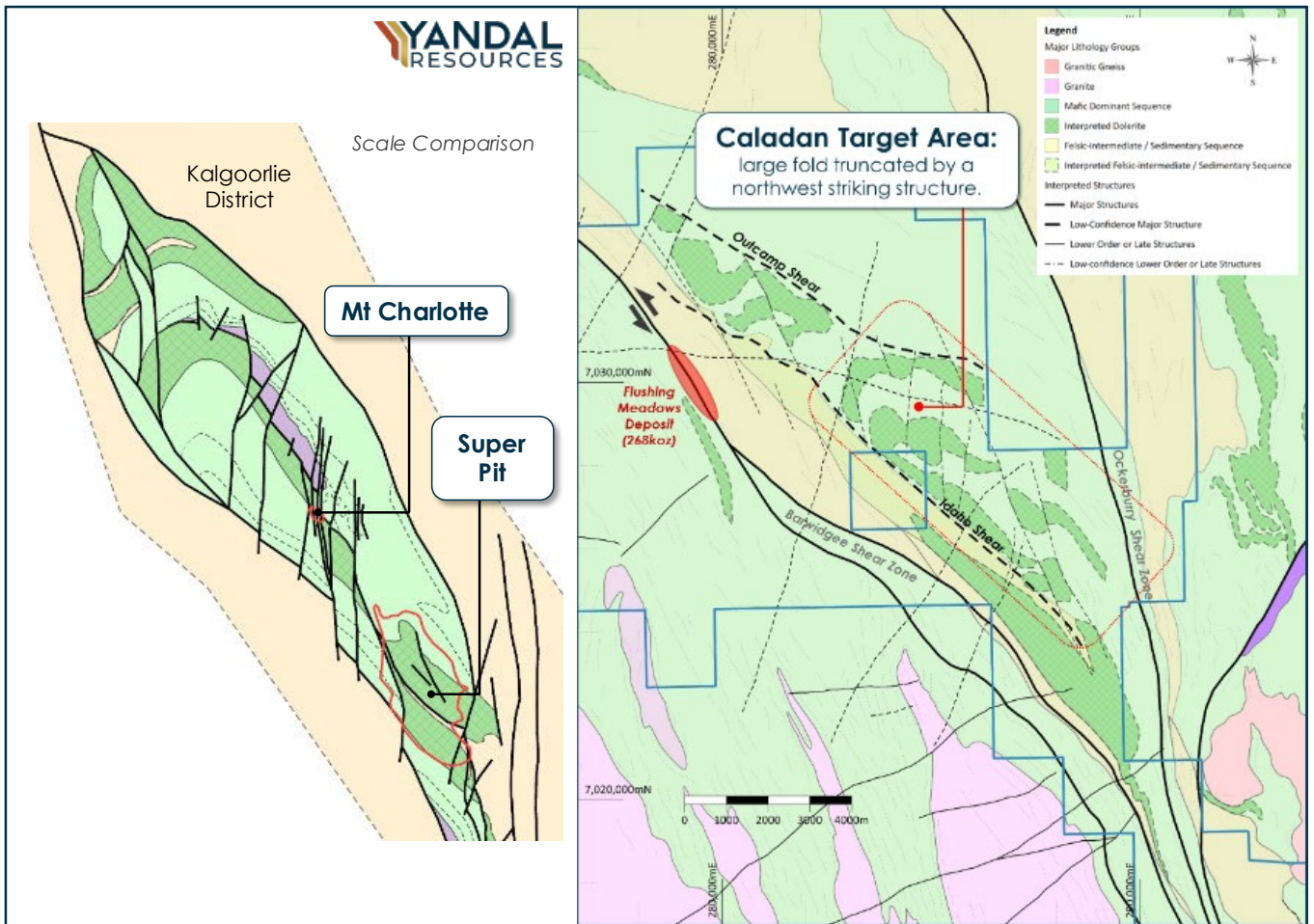


Figure 3: A scale comparison of the Caladan Fold (target area) and the Kalgoorlie district, showing simplified bedrock geology interpretations. Kalgoorlie interpreted geology adapted from N.M. Vielreicher, D.I. Groves, N.J. McNaughton. 2016. The giant Kalgoorlie Goldfield revisited. *Geoscience Frontiers*, volume 7, pp. 359-374.

Looking Ahead

The Company maintains a strong cash position and a very active exploration schedule for 2025. Notable near-term activities and news flow include;

1. Completion of the large-scale **12,500m Caladan AC program** in four to six weeks;
2. An **AC drilling program** across the **New England Granite** will be scheduled following the completion of heritage surveys;
3. All results from the **Caladan AC program** are anticipated before the end of the September Quarter.

Authorised by the board of Yandal Resources

For further information, please contact:

Chris Oorschot

Managing Director
Yandal Resources Limited
yandal@yandalresources.com.au

Greg Fitzgerald

Company Secretary
+61 8 9389 9021
yandal@yandalresources.com.au

About Yandal Resources Limited

Yandal Resources has a portfolio of advanced gold exploration projects in the highly prospective Yandal and Norseman-Wiluna Greenstone Belts of Western Australia.

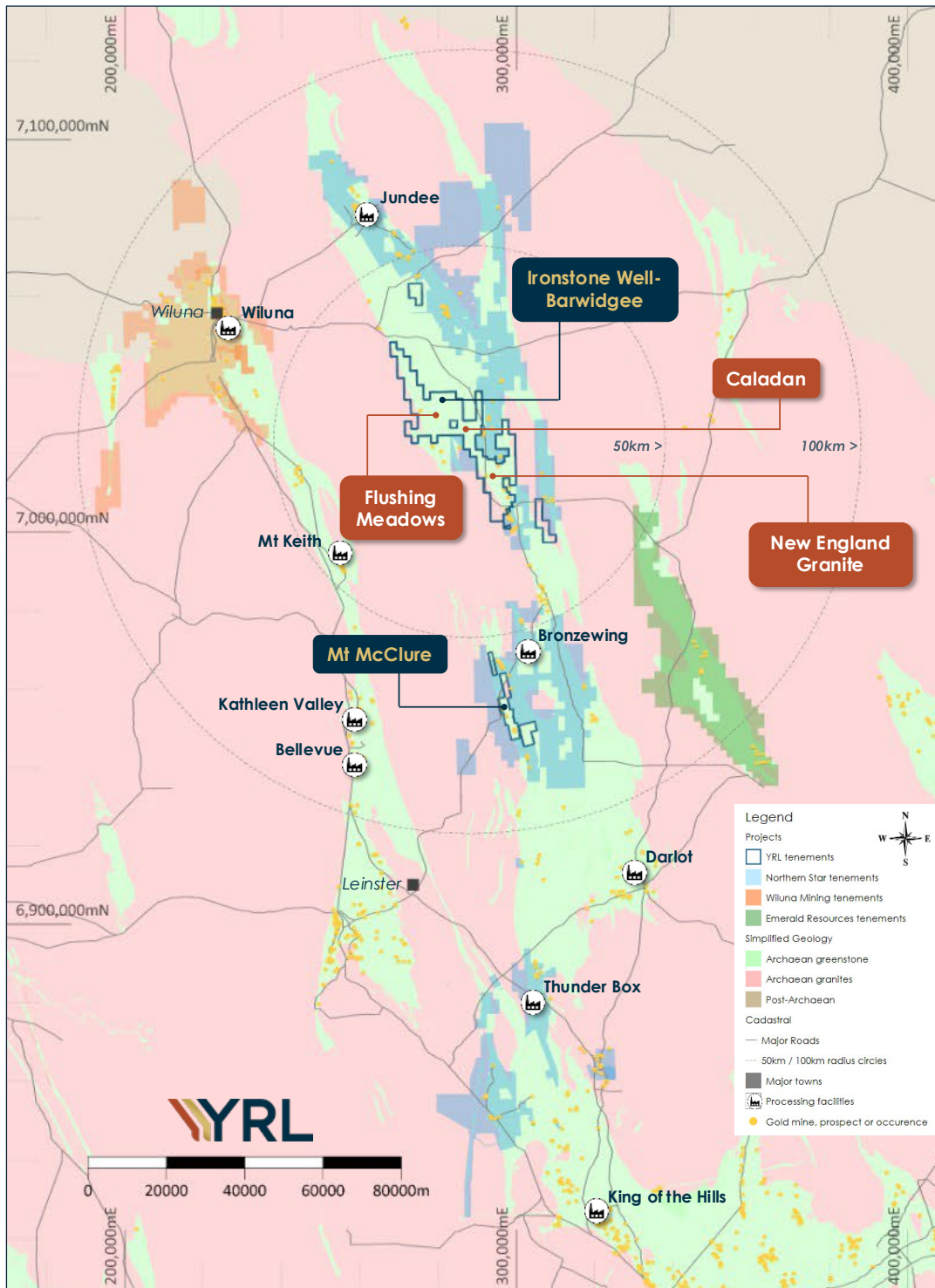


Figure 4: Yandal Resource exploration Project locations within the Yandal Greenstone Belt.

Competent Person Statement

The information in this document related to Exploration Results, geology and data compilation is based on information reviewed or compiled by Mr Christopher Oorschot, a Competent Person who is a Member of The Australasian Institute Geoscientists. Mr Oorschot is the Managing Director of the Company, is a full-time employee and holds shares and options in the Company. Mr Oorschot has sufficient experience which is relevant to the style of mineralisation and type of deposit under consideration and to the activity which he is undertaking to qualify as a Competent Person as defined in the 2012 Edition of the 'Australasian Code for Reporting of Exploration Results, Mineral Resources and Ore Reserves'. Mr Oorschot consents to the inclusion in this announcement of the matters based on this information in the form and context in which it appears.

YRL confirms that it is not aware of any new information or data that materially affects the information included in the original market announcement. The company confirms that the form and context in which the Competent Person's findings are presented have not been materially modified from the original market announcement.

Relevant Previous ASX Announcements

- RIU Sydney Presentation, 7 May 2025
- Arrakis RC Drilling Results, 30 April 2025
- Ironstone Well-Barwidgee Exploration Update, 25 February 2025
- Caladan Air-Core Drilling Demonstrates Discovery Potential, 15 January 2025
- Air-core Drilling Commences Across Caladan and Irulan, 10 October 2024
- Oblique Diamond Drilling Results, 3 September 2024
- IWB Soil Results and NEG Diamond Drilling Complete, 12 August 2024
- Large-scale Gold Anomalies Across Emerging Targets, 15 July 2024
- Gold Coast Investment Showcase Presentation, 20 June 2024
- Exploration Update – IWB Ground Gravity Survey, 11 June 2024