



# Magnetic Resources

**Increased Lady Julie Gold Resource and Project Update**

**June 2025**

## DISCLAIMER

The information contained in this presentation has been prepared by Magnetic Resources NL ("MAU" or "Company"). This presentation is not an offer, invitation, solicitation or other recommendation with respect to the subscription for, purchase or sale of any securities in MAU. This presentation has been made available for information purposes only and does not constitute a prospectus, short form prospectus, profile statement or offer information statement. This presentation is not subject to the disclosure requirements affecting disclosure documents under Chapter 6D of the *Corporations Act 2001* (Cth) (**Corporations Act**).

This presentation may contain certain forward-looking statements and projections regarding estimated, resources and reserves; planned production and operating costs profiles; planned capital requirements; and planned strategies and corporate objectives. Such forward looking statements/projections are estimates for discussion purposes only and should not be relied upon. They are not guarantee of future performance and involve known and unknown risks, uncertainties and other factors many of which are beyond the control of Magnetic Resources NL. The forward-looking statements/projections are inherently uncertain and may therefore differ materially from results ultimately achieved.

Magnetic Resources NL does not make any representations and provides no warranties concerning the accuracy of the projections and disclaims any obligation to update or revise any forward-looking statements/projects based on new information, future events or otherwise except to the extent required by applicable laws. While the information contained in this presentation has been prepared in good faith, neither MAU or any of its directors, officers, agents, employees or advisors give any representation or warranty, express or implied, as to the fairness, accuracy, completeness or correctness of the information, opinions and conclusions contained in this presentation. Accordingly, to the maximum extent permitted by law, none of MAU, its directors, employees or agents, advisers, nor any other person accepts any liability whether direct or indirect, express or limited, contractual, tortious, statutory or otherwise, in respect of, the accuracy or completeness of the information or for any of the opinions contained in this presentation or for any errors, omissions or misstatements or for any loss, howsoever arising, from the use of this presentation.

## CAUTIONARY STATEMENT

This Presentation includes information extracted from the Company's ASX announcement dated 7 March 2024 titled "Outstanding value demonstrated by PFS at Lady Julie Project". For the production targets and forecast financial information for the Project comprise Indicated Mineral Resources (approximately 73%) and Inferred Mineral Resources (approximately 27%). The Company has concluded that it has reasonable grounds for disclosing a production target which includes the foregoing amount of Inferred Mineral Resources, including on the basis that the Inferred material has been scheduled such that less than 3% of the ore mined in the first 4 years is in the Inferred category, with the remainder mined through the life of mine. The Inferred Mineral Resource does not have a material effect on the technical and economic viability of the Lady Julie Gold Project. Accordingly, Magnetic has concluded that it is satisfied that the financial viability of the development case modelled in the PFS is not dependent on the inclusion of Inferred Mineral Resources early in the production schedule given an estimated payment period (from commencement of production) of 15 months.

There is a low level of geological confidence associated with Inferred Mineral Resources and there is no certainty that further exploration work will result in the determination of Indicated Mineral Resources or that the production target itself will be realised. Further drilling is planned with the aim of converting Inferred Mineral Resources to Indicated Mineral Resources.

## FORWARD-LOOKING STATEMENTS

This Presentation contains forward-looking statements. Generally, the words "expect", "potential", "intend", "estimate", "will" and similar expressions identify forward-looking statements. By their very nature forward-looking statements are subject to known and unknown risks and uncertainties that may cause our actual results, performance or achievements, to differ materially from those expressed or implied in any of our forward-looking statements, which are not guarantees of future performance. Statements in this announcement regarding Magnetic's business or proposed business, which are not historical facts, are forward-looking statements that involve risks and uncertainties, such as Mineral Resource estimates, market prices of commodities (including gold), capital and operating costs, changes in project parameters as plans continue to be evaluated, continued availability of capital and financing and general economic, market or business conditions, and statements that describe Magnetic's future plans, objectives or goals, including words to the effect that Magnetic or Magnetic's management expects a stated condition or result to occur. Forward-looking statements are based on estimates and assumptions that, while considered reasonable by Magnetic, are inherently subject to significant technical, business, economic, competitive, political and social uncertainties and contingencies. The Company's directors cannot and do not give any assurance that the results, performance or achievements expressed or implied by the forward-looking statements contained in this Presentation will actually occur and investors are cautioned not to place undue reliance on these forward-looking statements, or to publish prospective financial information in the future, regardless of whether new information, future events or any other factors affect the information contained in this Presentation, except where required by law of the ASX Listing Rules.

## RELiance ON THIRD PARTY INFORMATION

The views expressed in this Presentation contain information that has been derived from third party sources that have not been independently verified. No representation or warranty is made as to the accuracy, completeness or reliability of the information.

## MINERAL RESOURCE REPORTING REQUIREMENTS

As an Australian company with securities quoted on the Australian Securities Exchange (ASX), the Company is subject to Australian disclosure requirements and standards, including the requirements of the Corporations Act and the ASX. Investors should note that it is a requirement of the ASX Listing Rules that the reporting of mineral resources in Australia is in accordance with the JORC Code and that the Company's mineral resource estimates comply with the JORC Code. The requirements of the JORC Code differ in certain material respect from the disclosure requirements or other countries. The terms used in this announcement are as defined in the JORC Code. The definitions of these terms may differ from the definitions of such terms for the purposes of the disclosure requirements in other countries. All material assumptions underpinning the mineral resources in the previous announcements continue to apply and have not materially changed.

## COMPETENT PERSONS' STATEMENTS

Information in this presentation that relates to Mineral Resources is based on and fairly represents information compiled by Mr Matt Edwards BSc, who is a member of the Australasian Institute of Geoscientists. He is a fulltime employee of Blue Cap Mining Pty Ltd. He has sufficient experience that is relevant to the style of mineralisation and type of deposit under consideration and to the activity that is being undertaken to qualify as a Competent Person as defined in the 2012 Edition of the 'Australasian Code for Reporting of Exploration Results, Minerals Resources and Ore Reserves'. Mr Widenbar consents to the inclusion in the presentation of the matters based on his information in the form and context that the information appears.

## ASX LISTING RULES

The company has reported information contained in prior ASX announcements and has cross referenced these announcements. The Company confirms that is not aware of any information or assumptions since the announcements were made that would likely materially change the content of these announcements or the resources reported in those announcements, in particular, 20 January 2025 and all material assumptions and technical parameters underpinning the estimates in the original release(s) continue to apply and have not materially changed. The Company confirms that the form and context in which the Competent Person's findings are presented have not been materially modified from the relevant original market announcement(s). Refer to the attached Appendices for further information on the Mineral Resource Estimate.

The production targets and forecast financial information disclosed in this Presentation are extracted from the Company's ASX announcement 5 August 2024 titled "Outstanding value demonstrated by Economic Update PFS at Lady Julie Project".

All material assumptions underpinning the production targets and forecast financial information derived from the production targets in the previous announcement continue to apply and have not materially changed.

This announcement references prior ASX announcements dated 30/05/2025, 9/04/2025 07/03/2025, 25,02,2025 06/02/2025, 20/01/2024,13/12/2024 25/11/2024 8/10/2024, 5/08/2024,26/07/2024, 18/07/2024, 2/07/2024, 27/06/2024, 24/06/2024, 13/06/2024,10/05/2024, 07/03/2024, 05/03/2024, 31/01/2024, 13/12/2024, 23/11/2023, 01/11/2023, 19/10/2023, 26/09/2023, 07/09/2023, 22/08/2023, 07/08/2023, 31/07/2023, 14/07/2022, 23/06/2023, 14/06/2023, 11/04/2023, 20/02/2023, 15/02/2023, 03/02/2023, 25/01/2023, 24/11/2022, 17/11/2022, 24/10/2022, 29/09/2022, 27/09/2022, 15/08/2022, 20/07/2022, 27/06/2022, 30/05/2022, 11/05/2022, 12/04/2022, 21/02/2022, 10/01/2022, 29/11/2021, 17/11/2021, 22/10/2021, 16/08/2021, 08/07/2021, 23/06/2021, 3/06/2021, 29/04/2021, 19/04/2021, 15/02/2021, 12/02/2021, 08/02/2021, 11/01/2021, 01/12/2020, 16/11/2020, 02/11/2020, 27/10/2020, 18/09/2020, 3/08/2020, 29/06/2020, 18/05/2020, 05/05/2020, 09/03/2020, 27/02/2020, 20/02/2020, 05/02/2020, 23/1/2020, 17/1/2020, 28/11/2019.

This presentation has been authorised for release by George Sakalidis.

# Executive Summary

# Investment Highlights

## Resources

- High-grade resource in a world class gold belt known for producing quality, long life mines

## Infrastructure

- Located near key infrastructure with under-utilised processing capacity
- Well established mining jurisdiction and associated permitting framework

## LJGP Resource Upgrade January 2025 <sup>1</sup>

- Total Lady Julie Gold Project resource is now 28.1Mt @ 1.93g/t Au for 1.75Moz Au
  - Lady Julie North 4 deposit resource has grown to 23.6Mt @ 2.04g/t Au for 1.55Moz Au
- Total Laverton resources grew to 33.1Mt @ 1.81g/t Au for 1.92Moz Au

## Outstanding Economics Demonstrated in PFS <sup>2</sup>

- Compelling economics demonstrated in August 2024 PFS update:
  - Pre-tax NPV<sub>8</sub> of \$925M and 135% IRR (assuming A\$3,200/oz gold price)
  - 104koz p.a. production over 8-year LOM
  - EBITDA \$1,487M, AISC \$1,386/oz

## DFS to be released in Q2/2025

- DFS expected to be released on Q2/2025, which will contemplate an underground mining scenario
- Significant economic upside vs August 2024 PFS based on increased resource base and much higher A\$ spot gold prices \$4,850

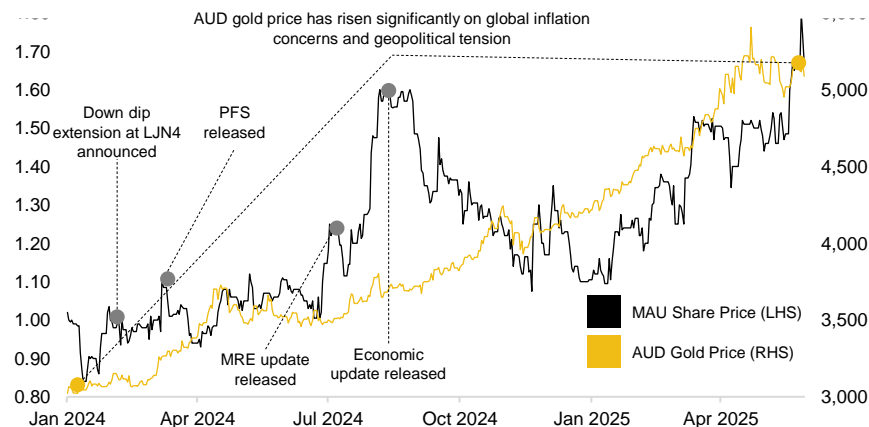
# Company and Asset Overview

# Corporate Overview

## Capitalisation Summary<sup>1</sup>

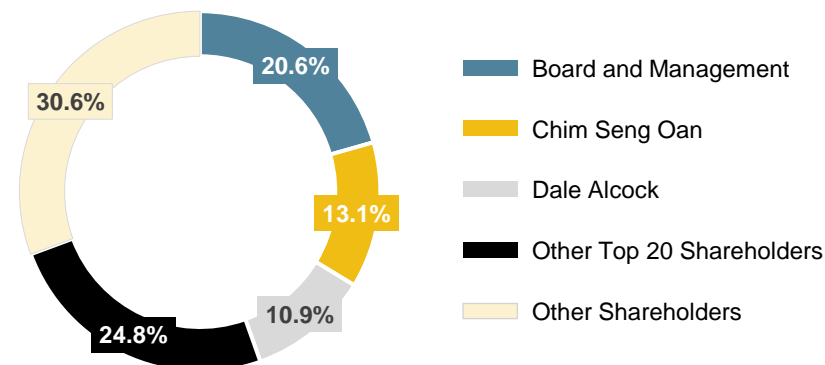
ASX Ticker		MAU
Share price	A\$/sh	1.75
Shares outstanding	#m	268.3
Partly paid shares @ \$0.20	#m	20.4
Options and Performance Rights	#m	12.5
<b>Market capitalisation</b>	<b>A\$m</b>	<b>469.5</b>
Cash (1 June 2025)	A\$m	8.4
<b>Enterprise value</b>	<b>A\$m</b>	<b>461.1</b>

## Share Price History since 1 January 2024<sup>1</sup>



(1) FactSet as at 29 May 2025.

## Top Shareholders



## Board and Management



### George Sakalidis

#### Founder and Managing Director

- Exploration geophysicist with over 35 years' industry experience
- Has been involved in several significant mineral discoveries, including the Three Rivers and Rose gold deposits, the Dongara Mineral Sands Deposits and the Boonanarring-Gingin South-Helene Mineral Sands Deposits in Western Australia



### Eric Lim

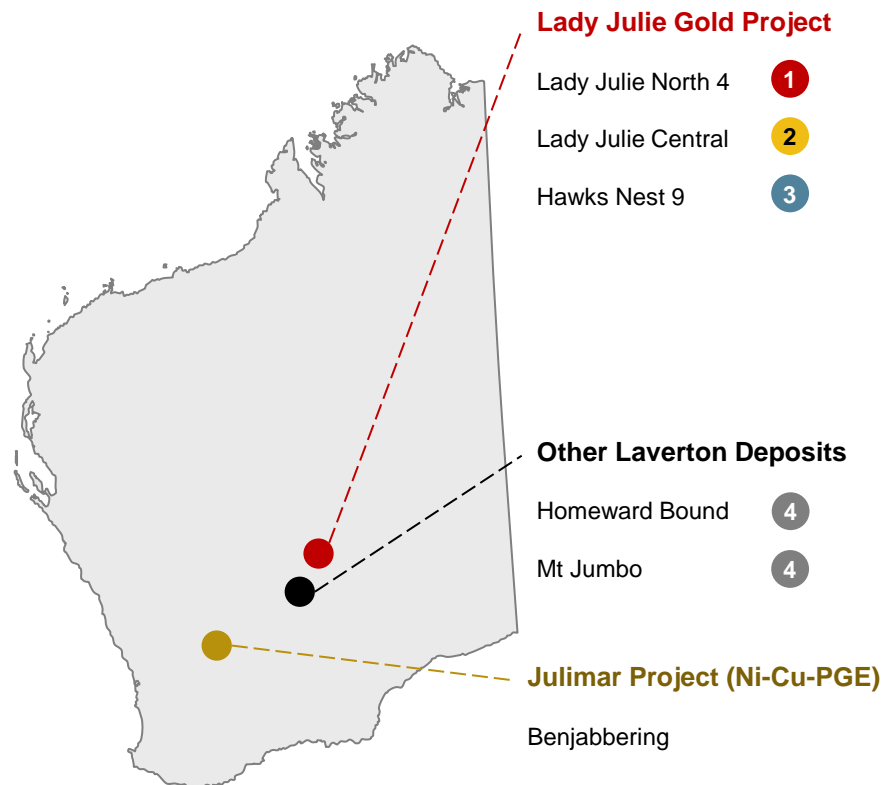
#### Non-Executive Chairman

- Extensive investment banking experience throughout South-East Asia, including with United Overseas Bank in Singapore and Standard Chartered
- Holds an MBA from the Kellogg School of Management

# Updated Laverton Region Mineral Resource Estimate <sup>1</sup>

Portfolio of 100%-owned tenements in a world-class gold belt, close to well-established infrastructure

Low discovery cost of A\$11/oz for all Resources



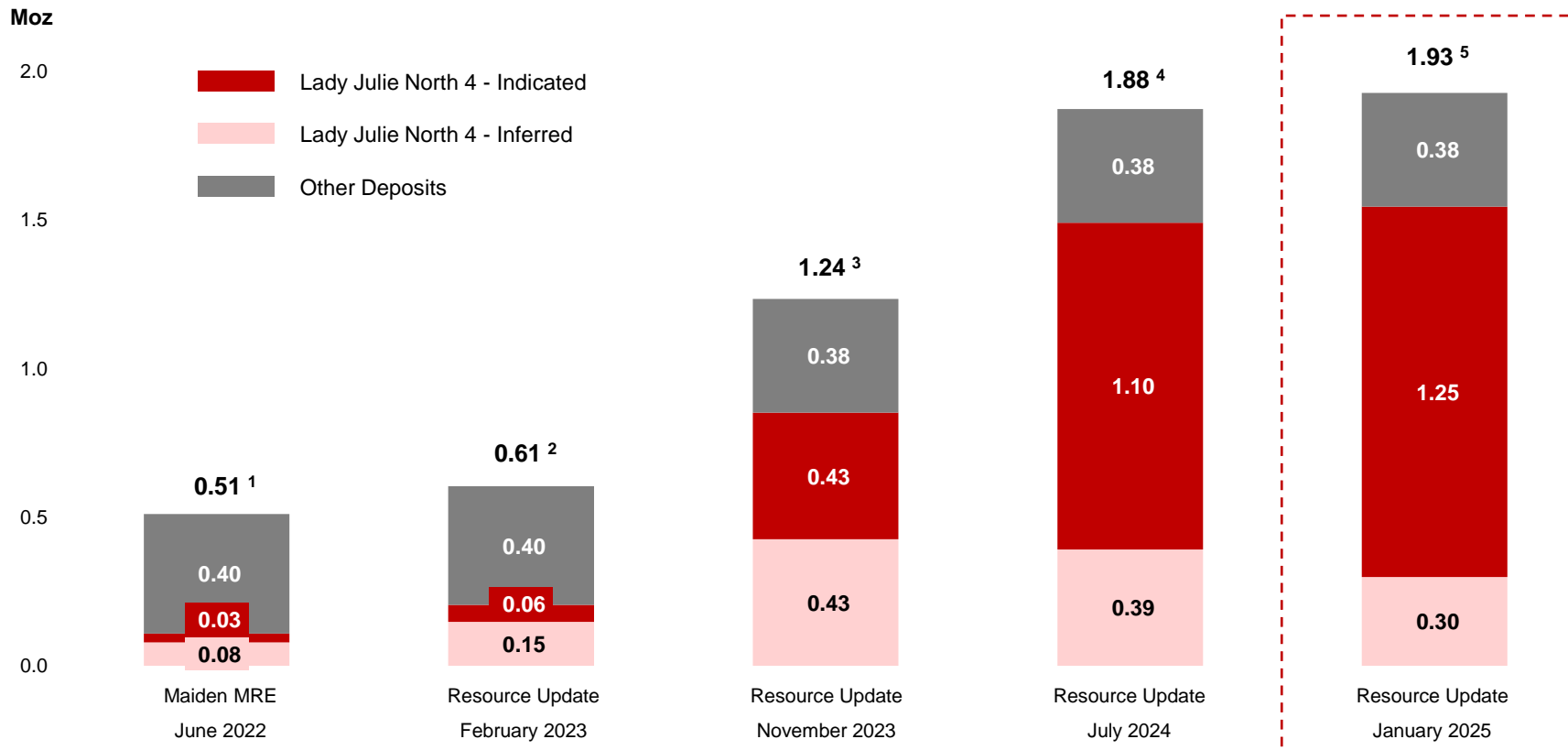
Asset	Classification	Tonnage (Mt)	Grade (g/t)	Contained Au Metal (Moz)
<b>1 Lady Julie North 4 (LJN4)</b>				
	Indicated	18.2	2.10	1.25
	Inferred	5.4	1.72	0.30
	<b>Total</b>	<b>23.6</b>	<b>2.04</b>	<b>1.55</b>
<b>2 Lady Julie Central (LJC)</b>				
	Indicated	0.8	1.97	0.05
	Inferred	0.5	1.26	0.02
	<b>Total</b>	<b>1.3</b>	<b>1.68</b>	<b>0.07</b>
<b>3 Hawks Nest 9 (HN9)</b>				
	Indicated	2.0	1.29	0.08
	Inferred	1.2	1.25	0.05
	<b>Total</b>	<b>3.2</b>	<b>1.28</b>	<b>0.13</b>
<b>4 Mount Jumbo, Homeward Bound</b>				
	Indicated	0.8	0.94	0.03
	Inferred	4.2	1.15	0.16
	<b>Total</b>	<b>5.0</b>	<b>1.12</b>	<b>0.18</b>
<b>Total<sup>1</sup></b>		<b>33.1</b>	<b>1.81</b>	<b>1.93</b>

(1) ASX announcement, 20 January 2025.



# Portfolio Resource Growth

**Demonstrated ability to grow contained gold resource through primary drilling, with over 14x growth in contained gold at Lady Julie North 4 since 2022; LJV4 is predicted to continue to at least 1km in down dip extent.**



(1) ASX announcement, 27 June 2022. (2) ASX announcement, 3 February 2023. (3) ASX announcement, 23 November 2023. (4) ASX announcement, 2 July 2024. (5) ASX announcement, 20 January 2025.

# Lady Julie North 4

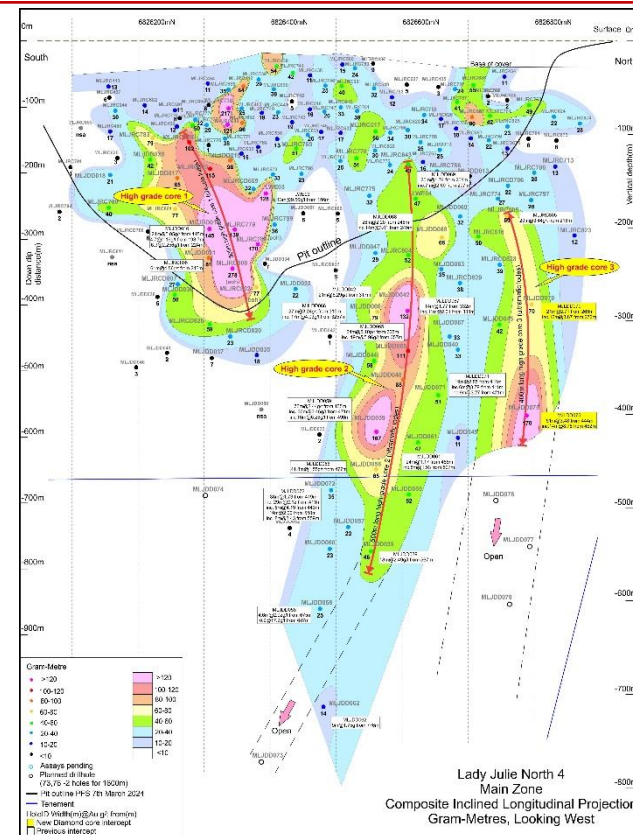
Gold zones (g-m) are consistent across Lady Julie North 4, with the high-grade northern zone still open at depth below 1000m

## NS Inclined Longitudinal Projection Along the Main Lode

- Highlights the total gold content of the main lodes (estimated true width x grade) **shows consistent mineralisation over 750m of strike and so far up to 1000m down-dip. There are three High Grade core zones. The northern most core zone 3 is still being enlarged at depth outside the current resource.**
- Gold mineralisation in the main lode occurs within an ultramafic and in overlying sedimentary carbonate-chert sequence, intruded felsic porphyry
- The tenor of mineralisation in the northern zone is consistent with thicknesses of between 20-30m with average grades varying from 2g/t to 6g/t, with a central core of 100g-m up to 167g-m**
- The southern carbonate-hosted lodes occur as breccias and strong silica pyrite alteration with a central core of 100g-m, up to 355g-m**
- There are also assays pending for two diamond drillholes MLJDD73 and 76 totalling 1600m. Recent intersection in MLJ22075 was outstanding 51m at 3.5g/t from 444m including 14m at 8.8g/t from 452m and bodes well for hole MLJDD076 which is 125m down dip.

## Value Potential from Thick Mineralized Intersections

- Lady Julie North 4 demonstrates exceptional potential value, averaging ~3,700oz per vertical metre from 30m to 400m depth and ~4,700oz per vertical metre average within an enhanced zone from 100m to 300m, primarily within the proposed open pit**



**Ongoing drilling shows down dip continuity down to 1000m.**

**Lady Julie North 4 Resource Wireframe looking north**



(1) MAU announcement to the ASX 'Increased Lady Julie Gold Project Resource and Project Update 20 January 2025.

# **Lady Julie Gold Project: 5 August 2024 Economic Update**

# Lady Julie Gold Project – 5 August 2024 Economic Update

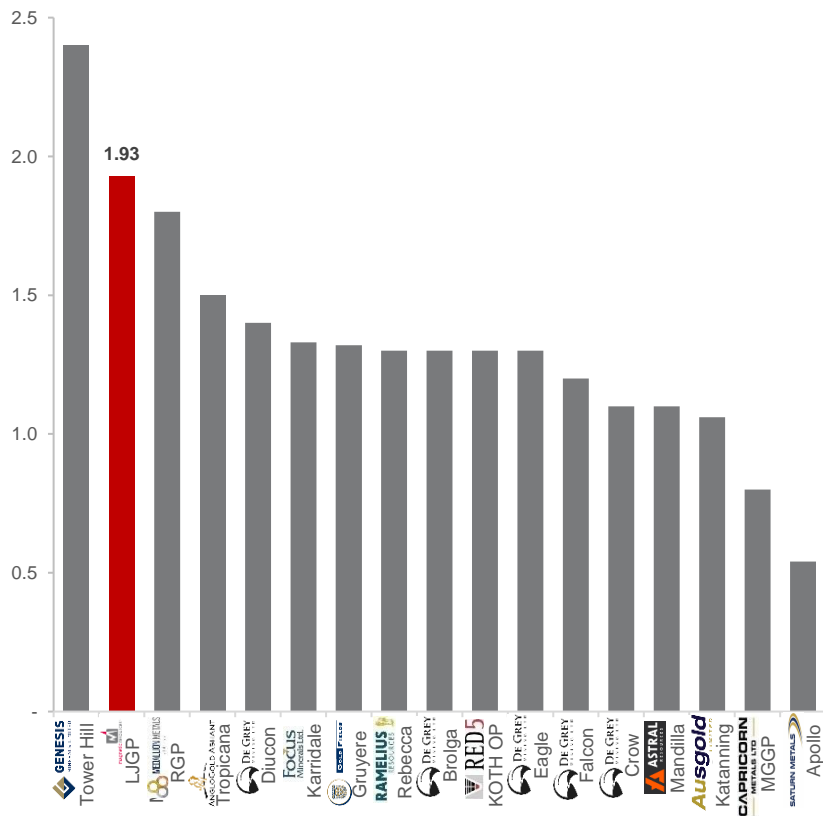
A de-risked Western Australian gold project; economics to be materially updated in the DFS expected to be released in Q2/2025<sup>1</sup>

<b>Life of Mine</b> 8 years	<b>Mining Physicals</b> 16.0Mt @ 1.71g/t gold for <b>883koz</b>	<b>Plant Capacity</b> 2.2Mt	<b>Metallurgical Recovery</b> 92.6%	<b>Total Production</b> 817,500oz	<b>Average Production</b> 104,000oz p.a.
<b>EBITDA (LOM)</b> \$1,487M	<b>NPV<sub>8</sub> (pre-tax)</b> \$925M	<b>Pre-Production Capital Cost<sup>2</sup></b> \$111M	<b>IRR (pre-tax)</b> 135%	<b>Operating Cost (AISC)</b> A\$1,386/oz	<b>Payback Period</b> 12 months

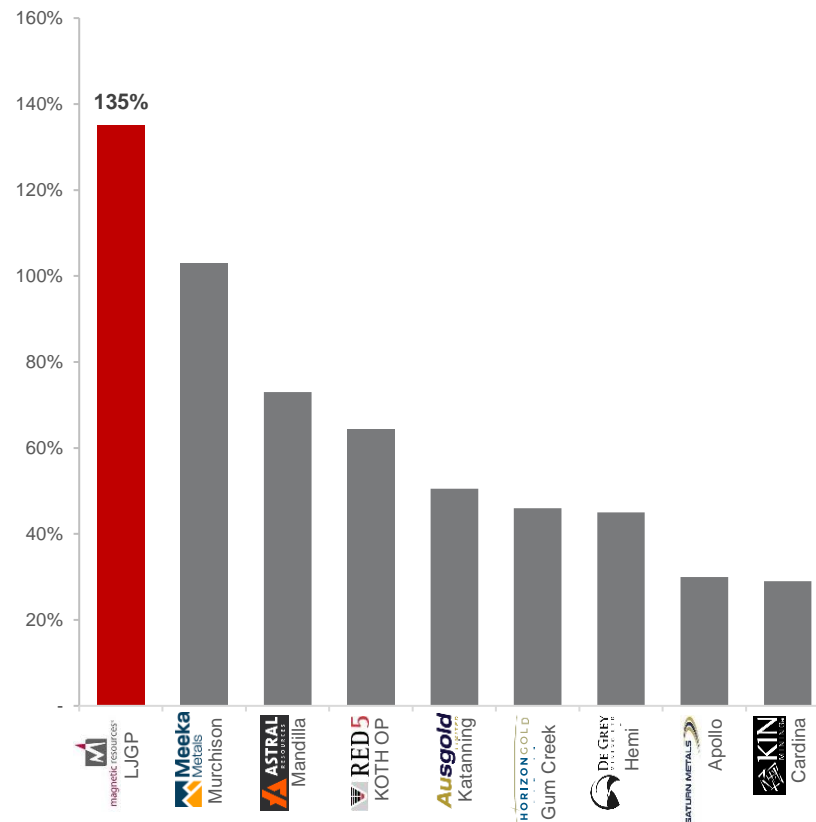
(1) Refer to the cautionary statement regarding production targets and forecast financial information on page 2. (2) Includes \$33.3m of capitalised operating costs and FID to mobilization costs.

# Lady Julie Gold Project Update – Benchmarking

## Open Pit Gold Projects – Resource Grade<sup>1</sup> (g/t)



## Open Pit Gold Projects – Project Pre-tax IRR<sup>2</sup> (%)



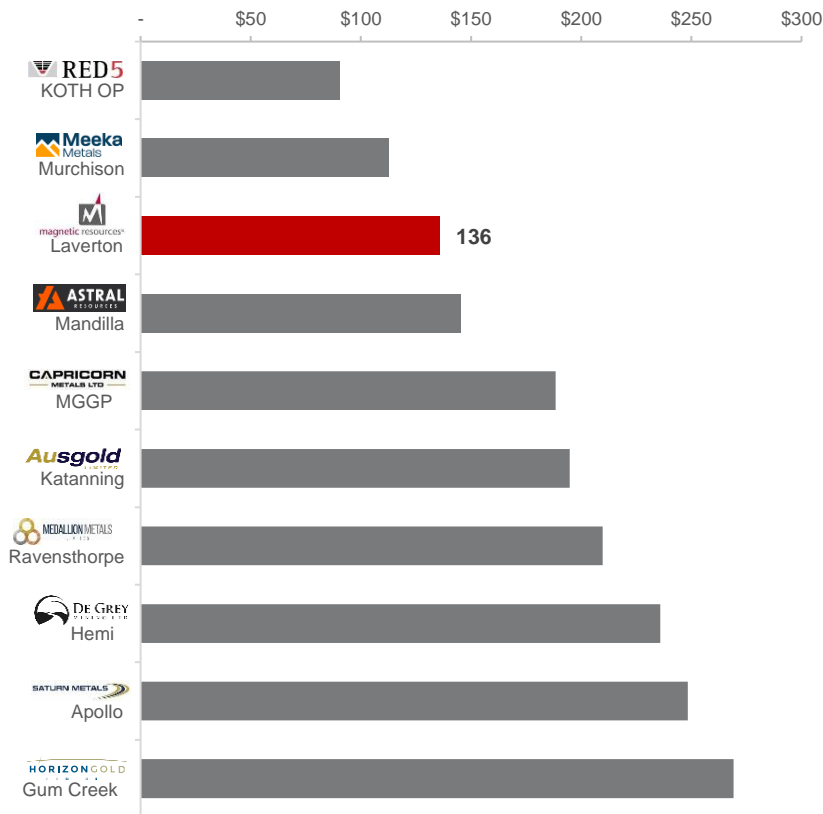
(1) Refer to "Project Benchmarking – Mineral Resource" for Company Reports. (2) Refer to "Project Benchmarking – Economic Studies" for Company Reports.

# Lady Julie Gold Project Update – Benchmarking (cont.)

## Life of Mine Average AISC<sup>1</sup> (\$A/oz)



## Initial CAPEX per Ounce of Total Production<sup>1</sup> (A\$/oz)



(1) Refer to "Project Benchmarking – Economic Studies" for Company Reports.

# Lady Julie Gold Project – Development Timeline

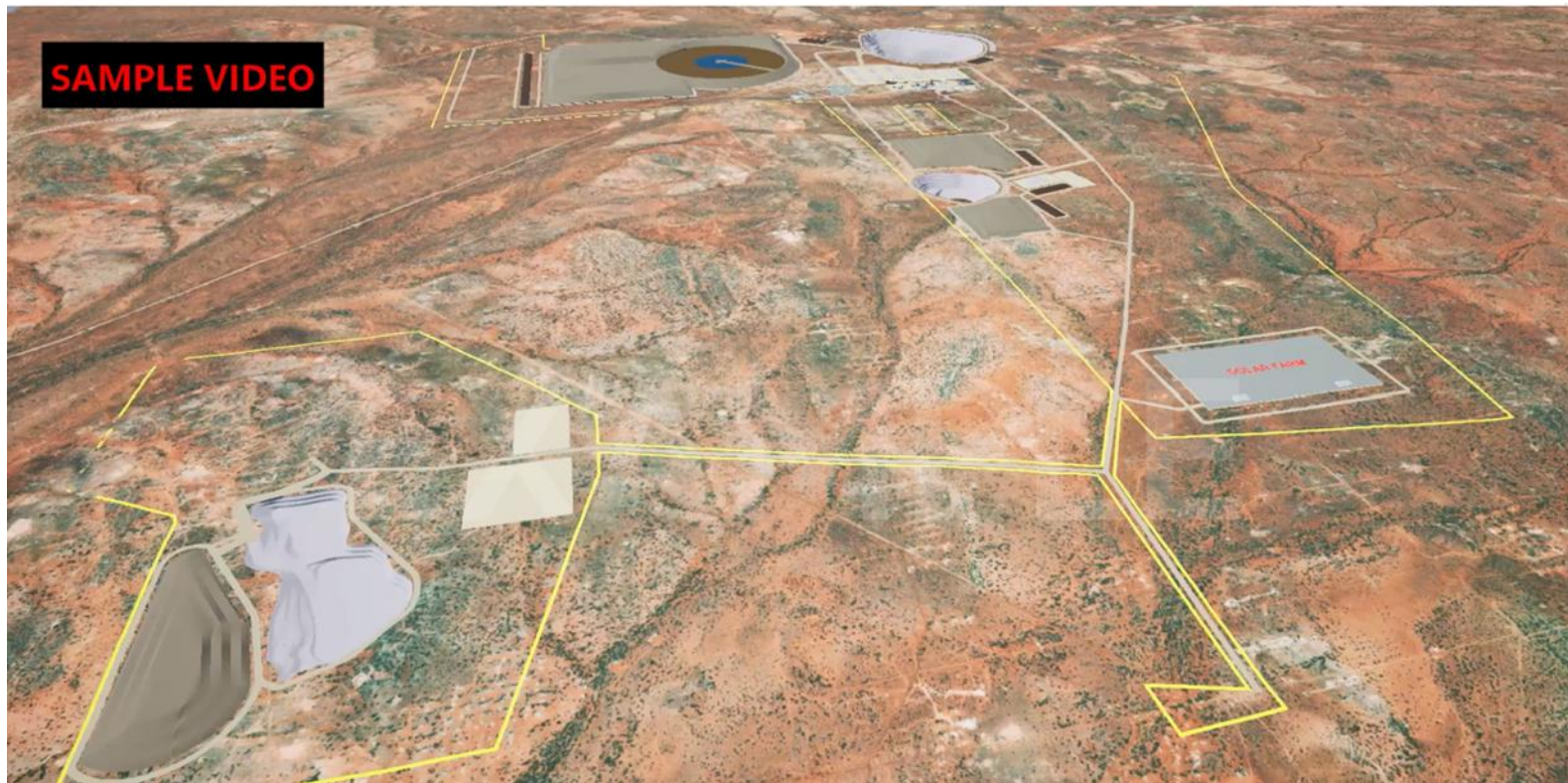
A near-term gold project targeting first production in mid 2026<sup>1</sup>

		2024				2025				2026				2027	
		Q1	Q2	Q3	Q4	Q1	Q2	Q3	Q4	Q1	Q2	Q3	Q4	Q1	Q2
Permitting and Approvals	Mining Lease Application				★										
	Mining Lease Approval														
	Native Title Negotiation														
Development	Plant Front End Design and Costing														
	Definitive Quotations														
	Feasibility Study														
	Decision to Proceed						★								
	Long Lead Item Procurement							★							
	Plant EPC														
	Plant Commissioning													★	
Operations	Pre-stripping of Open Pit										★				



# Lady Julie Gold Project – Conceptual Plant Design

Overview showing LJC and HN9 open cuts, tailings dam, waste areas , processing plant, rom and mining and processing hubs.<sup>1</sup>



(1) This slide outlines a conceptual plant design being reviewed by Magnetic Resources as it progresses towards completion of a feasibility study. Economics and final design of the plant will be releases in the upcoming feasibility study.

# Lady Julie Gold Project – Conceptual Plant Design

Overview showing LJV4 and LJC open cuts, tailings dam and waste areas, processing plant, rom and mining and processing hubs.<sup>1</sup>



*(1) This slide outlines a conceptual plant design being reviewed by Magnetic Resources as it progresses towards completion of a feasibility study. Economics and final design of the plant will be released in the upcoming feasibility study.*



# Lady Julie Gold Project – Conceptual Plant Design

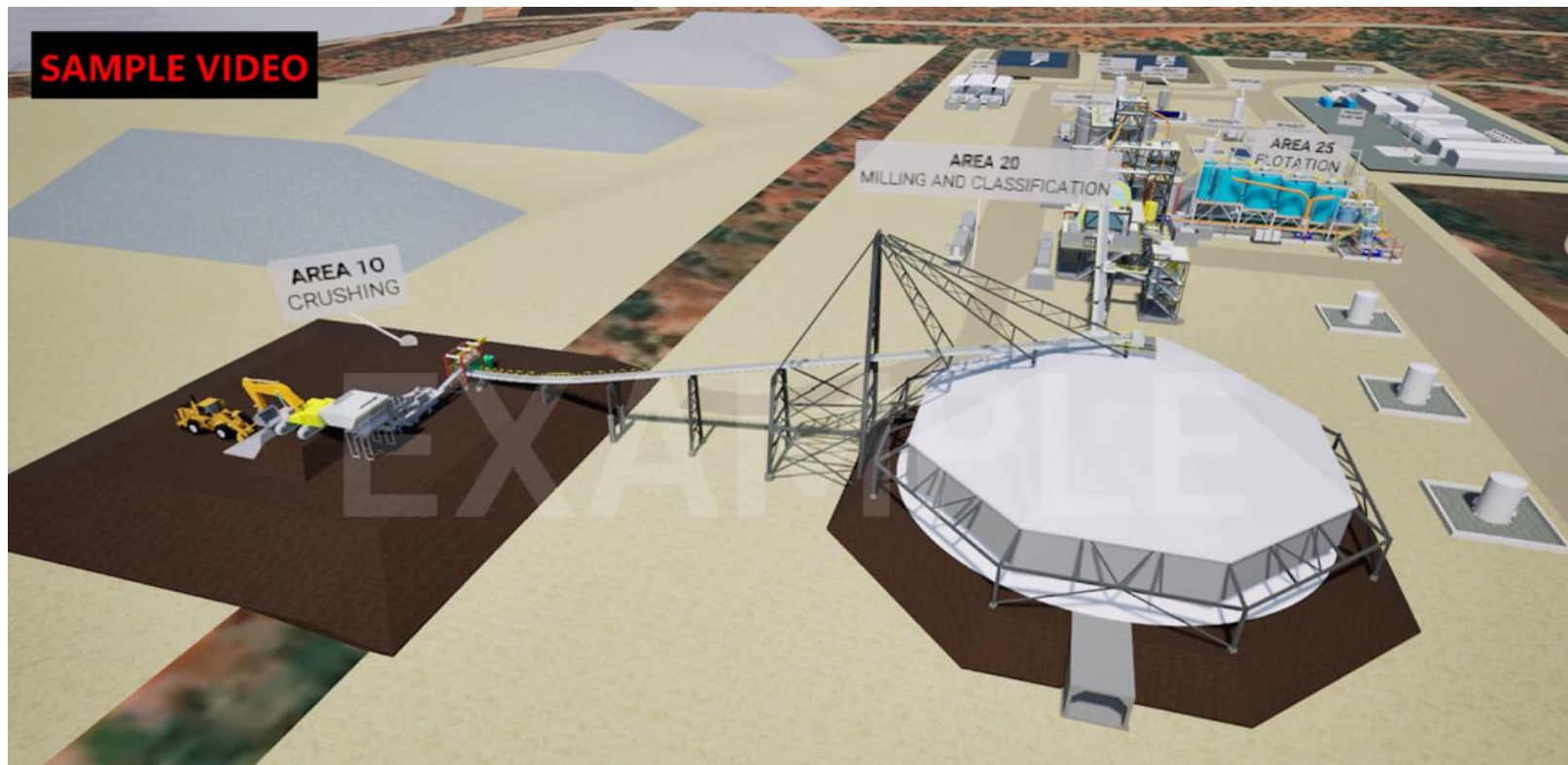
Overview showing LNJ4 open cut, rom, processing plant, rom and mining hub.<sup>1</sup>



<sup>(1)</sup> This slide outlines a conceptual plant design being reviewed by Magnetic Resources as it progresses towards completion of a feasibility study. Economics and final design of the plant will be released in the upcoming feasibility study.

# Lady Julie Gold Project – Conceptual Plant Design

Overview showing LJV4 rom and overview of processing plant <sup>1</sup>

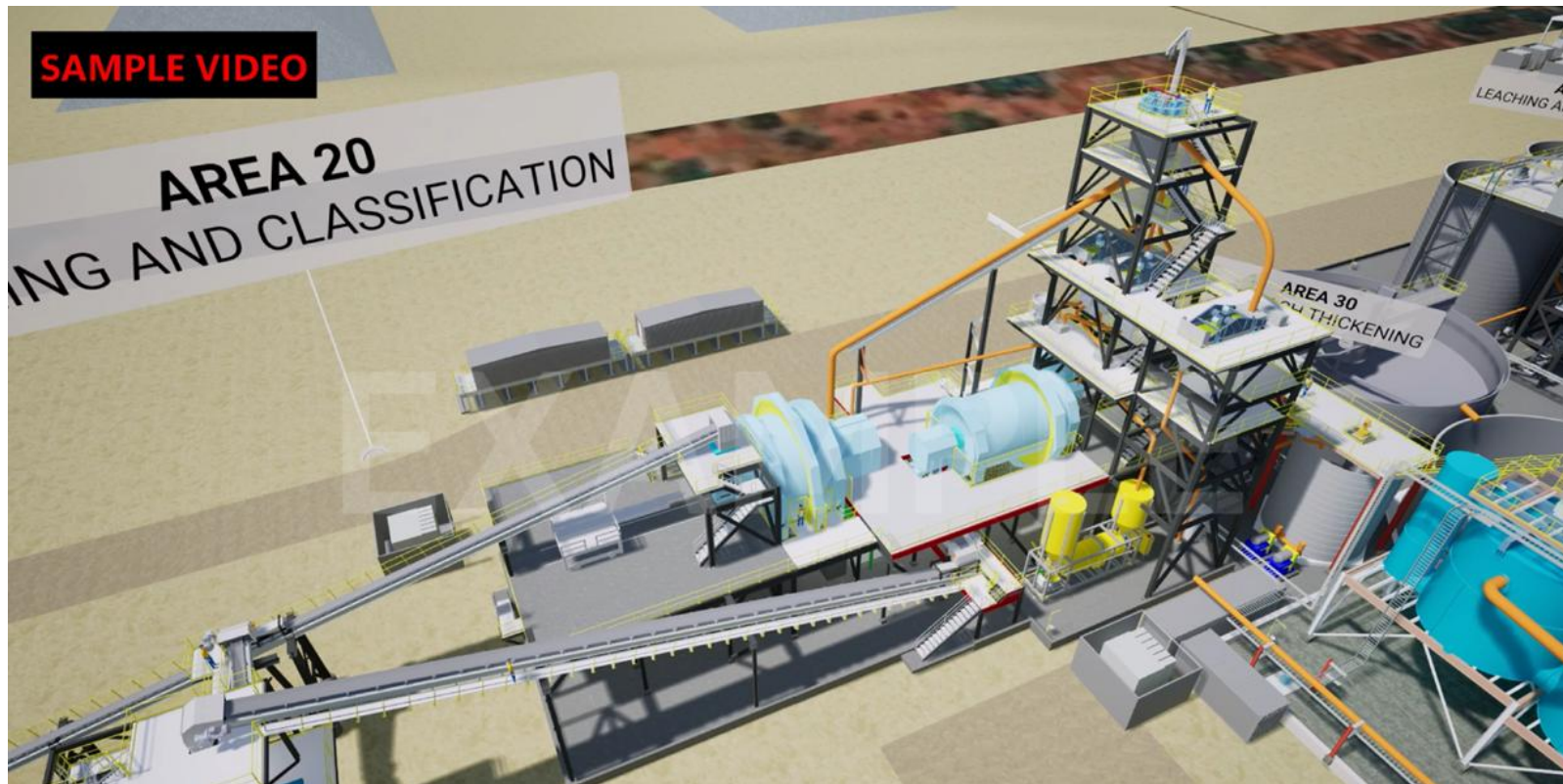


(1) This slide outlines a conceptual plant design being reviewed by Magnetic Resources as it progresses towards completion of a feasibility study. Economics and final design of the plant will be released in the upcoming feasibility study.



# Lady Julie Gold Project – Conceptual Plant Design

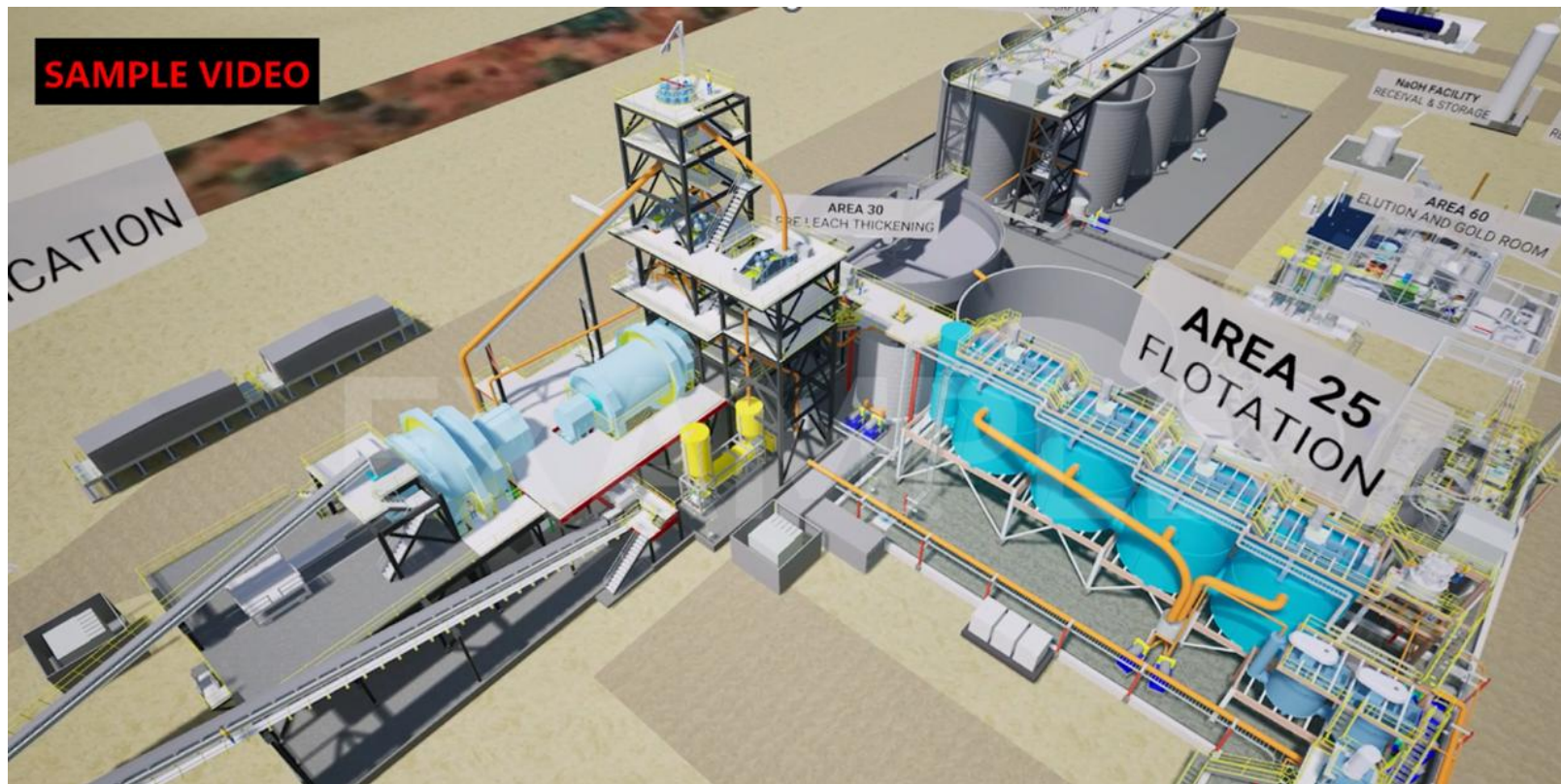
Overview showing LJV4 showing sag and ball mills, gravity concentrator, thickener and flotation cells.<sup>1</sup>



(1) This slide outlines a conceptual plant design being reviewed by Magnetic Resources as it progresses towards completion of a feasibility study. Economics and final design of the plant will be releases in the upcoming feasibility study.

# Lady Julie Gold Project – Coceptual Plant Design

Overview showing sag and ball mills, gravity concentrator, flotation cells, cyanide tanks and gold room.<sup>1</sup>



(1) This slide outlines a conceptual plant design being reviewed by Magnetic Resources as it progresses towards completion of a feasibility study. Economics and final design of the plant will be releases in the upcoming feasibility study.



# Lady Julie Gold Project – Conceptual Plant Design

Overview showing flotation cells, thickener, cyanide tanks and gold room.<sup>1</sup>



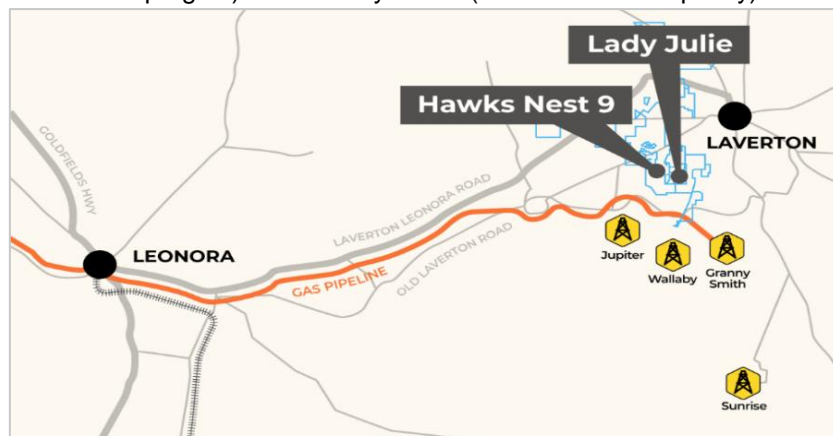
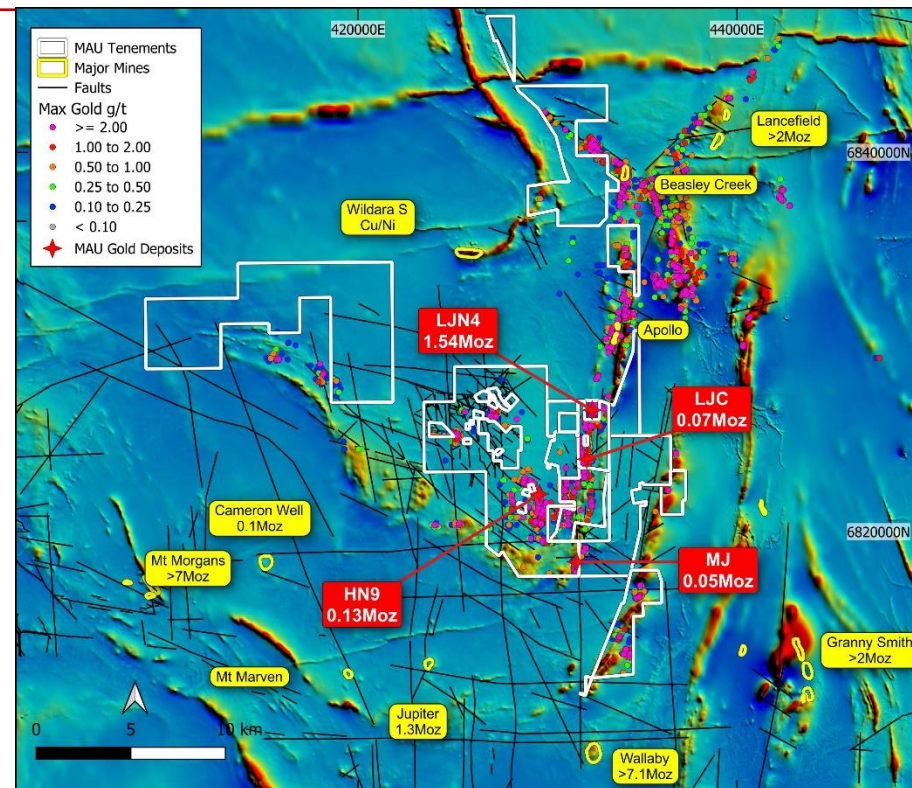
(1) This slide outlines a conceptual plant design being reviewed by Magnetic Resources as it progresses towards completion of a feasibility study. Economics and final design of the plant will be released in the upcoming feasibility study.

# Laverton Gold Project Location

Located in the heart of the Laverton gold belt, neighboring world-class gold deposits and under-utilised essential processing infrastructure.

## Neighbouring Assets and Infrastructure

- Our 100% owned tenements are near existing operators, including:
  - Gold Fields (Granny Smith / Wallaby) 15km away
  - Genesis (Mt Morgans) 10km away
  - AngloGold Ashanti (Sunrise Dam) 50 km away
- Infrastructure, such as Laverton township, roads and underutilised processing infrastructure provide significant competitive advantage to Magnetic's projects and long-term viability
- Nearby underutilised processing capacity at Mt Morgans (recently started up again) and Granny Smith (less than 50% capacity)





# Magnetic Resources Summary

---

Rapidly advancing to become the next gold producer in the heart of the Laverton district



**Low risk, high grade open pit gold project in a leading gold region**



**Low-cost development with exceptional project economics**



**Highly prospective resource extension potential at depth**



**Strategically located, adjacent to multiple production hubs**



**Rapidly advancing towards a development decision**

# Appendix

# Project Benchmarking – Mineral Resource <sup>1</sup>

Project	Company	Stage	Source Announcement	Date	Tonnage (Mt)	Total Resource (Measured, Indicated and Inferred)			Measured	Indicated	Inferred
						Gold (koz, g/t)	Silver (koz, g/t)	Copper (kt, %)	Tonnage (Mt)	Tonnage (Mt)	Tonnage (Mt)
Lady Julie	Magnetic Resources	Feasibility	'Lady Julie North 4 - 1.49moz Resource And Still Growing'	02/07/24	27.6	1,693 1.91	-	-	-	18.9	8.7
Tower Hill (Open Pit)	Genesis Minerals	Feasibility	'Growth Strategy Underpinned by Robust Reserves'	21/03/24	18	1,400 2.40	-	-	-	17	1
Tropicana (Open Pit)	AngloGold Ashanti / Regis Resources	Producing	'Reserves Keep Growing at Tropicana'	26/02/24	27.0	1,300 1.5	-	-	3	24	-
Diucon	De Grey Mining	Feasibility	'Equity Raising Investor Presentation'	08/05/24	57.4	2,502 1.4	-	-	-	37.1	20.3
Gruyere (Open Pit)	Gold Fields / Gold Road Resources	Producing	'2023 Annual Report - 100% Basis'	26/03/24	123.1	5,220 1.3	-	-	20.3	82.9	19.9
Karridale	Focus Minerals	Feasibility	'2023 Annual Report'	31/03/23	27.7	1,188 1.33	-	-	-	22.1	5.6
Rebecca	Ramelius Resources	Exploration	'BMO Global Metals Presentation'	26/02/24	33.0	1,400 1.3	-	-	-	27.0	6.5
Brolga	De Grey Mining	Feasibility	'Equity Raising Investor Presentation'	08/05/24	62.2	2,507 1.3	-	-	-	46.0	16.2
KOTH (Open Pit)	Red 5	Producing	'Mineral Resource and Ore Reserve Statement at 30 June 2023'	07/09/23	75.7	3,184 1.3	-	-	4.1	61.1	10.6

(1) Totals may not reconcile due to rounding.

# Project Benchmarking – Mineral Resource (cont.) <sup>1</sup>

Project	Company	Stage	Source Announcement	Date	Tonnage (Mt)	Total Resource (Measured, Indicated and Inferred)			Measured	Indicated	Inferred
						Gold (koz, g/t)	Silver (koz, g/t)	Copper (kt, %)	Tonnage (Mt)	Tonnage (Mt)	Tonnage (Mt)
Eagle	De Grey Mining	Feasibility	'Equity Raising Investor Presentation'	08/05/24	45.2	1,922 1.3	-	-	-	19.7	25.5
Crow	De Grey Mining	Feasibility	'Equity Raising Investor Presentation'	08/05/24	31.9	1,162 1.1	-	-	-	24.3	7.6
Falcon	De Grey Mining	Feasibility	'Equity Raising Investor Presentation'	08/05/24	37.9	1,449 1.2	-	-	-	26.0	12.0
MGGP	Capricorn Metals	Feasibility	'MGGP Ore Reserve Grows to 1.83 Million Ounces'	19/04/24	125.1	3,305 0.8	-	-	-	98.8	26.3
Katanning (Open Pit)	Ausgold	Feasibility	'Katanning Gold Resource increases to 3.04 million ounces'	04/09/23	87.3	2,956 1.06	-	-	38.2	31.8	17.3
Mandilla	Astral Resources	Scoping	'RIU Resources Round-Up Presentation'	08/05/24	37.0	1,265 1.1	-	-	-	21	17
Apollo	Saturn Metals	Scoping	'June 2024 Investor Presentation'	18/06/24	105.0	1,839 0.54	-	-	4.7	54	47
Klondyke (Open Pit)	Calidus Resources	Development	'Resources Rising Stars Presentation'	04/04/24	31.1	840 0.84	-	-	1.1	13.0	17.0
RGP (Open Pit)	Medallion Metals	Feasibility	'RIU Sydney Investor Presentation'	08/05/24	17.0	980 1.8	-	41 0.2%	-	11.4	5.6

(1) Totals may not reconcile due to rounding.

# Project Benchmarking – Economic Studies

Project	Company	Source	Life of Mine	Mineral Resource	Gold Recovery (LOM)	Plant Capacity (Mt)	Total Production (koz)	Average Production (koz p.a.)	NPV (pre-tax)	Pre-Production Capital Cost	IRR (pre-tax)	AISC (LOM, A\$/oz)	Payback Period (years)
Lady Julie	Magnetic Resources	Page 1, 2 - 02/08/24 LJGP Project Economic Update'	8 years	16.0Mt @ 1.7g/t for <b>0.9Moz</b>	92.6%	2.2	817	104	925 <sub>8%</sub>	111	135%	1,386	1.0 (Pre-tax)
Hemi	De Grey Mining	Page 6, 7 - 28/09/23 'DFS Announcement' - <a href="https://degreymining.com.au/wp-content/uploads/2023/09/20230928-DEG-ASX-DFS-Announcement-Executive-Summary-Combined-lodgement.pdf">https://degreymining.com.au/wp-content/uploads/2023/09/20230928-DEG-ASX-DFS-Announcement-Executive-Summary-Combined-lodgement.pdf</a>	12 years	122Mt @ 1.5g/t for <b>6.1Moz</b>	93.5%	10.0	5,700	475	4,200 <sub>8%</sub>	1,345	45%	1,295	1.5 (Pre-tax)
KOTH Open Pit	Red 5	Page 1, 10, 13 - 15/09/20 'King of the Hills Final Feasibility Study' - <a href="https://www.red5limited.com/site/pdf/8ada3c7a-a82a-44d7-a34d-37a936bebbef/KOTH-Final-Feasibility-Study-delivers-24Moz-reserve.pdf">https://www.red5limited.com/site/pdf/8ada3c7a-a82a-44d7-a34d-37a936bebbef/KOTH-Final-Feasibility-Study-delivers-24Moz-reserve.pdf</a>	16 years	62.2Mt @ 1.2g/t for <b>2.5Moz</b>	92.7%	4.0	2,500	156	1,101 <sub>8%</sub>	226	64%	1,435	2.1 (Post-tax)
MGGP	Capricorn Metals	Page 1, 11, 20 - 19/04/23 'Mt Gibson Gold Project Maiden Reserve & PFS' - <a href="https://capmetals.com.au/wp-content/uploads/2023/04/2023.04.18-MGGP-Maiden-Ore-Reserve-FINAL.pdf">https://capmetals.com.au/wp-content/uploads/2023/04/2023.04.18-MGGP-Maiden-Ore-Reserve-FINAL.pdf</a>	10 years	48.7Mt @ 0.9g/t for <b>1.5Mkoz</b>	92.6%	5.0	1,380	138	828 <sub>5%</sub>	260	N/A	1,529	1.9 (Pre-tax)
Katanning	Ausgold	Page 2, 3, 28 - 01/08/22 'Ausgold delivers 1.28 Moz Maiden Ore Reserve at Katanning' - <a href="https://www.investi.com.au/api/announcements/auc/ff9df674-522.pdf">https://www.investi.com.au/api/announcements/auc/ff9df674-522.pdf</a>	11 years	32Mt @ 1.3g/t for <b>1.3Moz</b>	90.4%	3.0	1,155	105	515 <sub>5%</sub>	225	51%	1,481	1.7 (Post-tax)
Mandilla	Astral Resources	Page 4, 5, 10 - 21/09/23 'Mandilla Gold Project - Positive Scoping Study' - <a href="https://www.investi.com.au/api/announcements/aar/286f2649-b5a.pdf">https://www.investi.com.au/api/announcements/aar/286f2649-b5a.pdf</a>	11 years	26.5Mt @ 1.0g/t for <b>0.9Moz</b>	95.7%	2.5	845	108	442 <sub>8%</sub>	123	73%	1,648	0.75 (Pre-tax)
Murchison (A\$3,250/oz case)	Meeka Metals	Page 2, 3, 6, 11, 45 - 31/12/24 Murchison Gold Project Definitive Feasibility Study' - <a href="https://www.investi.com.au/api/announcements/mek/da7aed63-41a.pdf">https://www.investi.com.au/api/announcements/mek/da7aed63-41a.pdf</a>	9 years	12.9Mt @ 3.0g/t for <b>1.2Moz</b>	97.5%	0.5	390	43	348 <sub>8%</sub>	44	103%	1,804	0.7 (Pre-tax)
Apollo (A\$2,750/oz case)	Saturn Metals	Page 5, 6, 10 - 17/08/23 'Apollo Hill Preliminary Economic Assessment' - <a href="https://saturnmetals.com.au/wp-content/uploads/2023/08/230807-Apollo-Hill-Preliminary-Economic-Assessment.pdf">https://saturnmetals.com.au/wp-content/uploads/2023/08/230807-Apollo-Hill-Preliminary-Economic-Assessment.pdf</a>	10 years	93.9Mt @ 0.5g/t for <b>1.2Moz</b>	75.0%	10	1,224	122	390 <sub>7%</sub>	304	30%	1,852	2.8 (Pre-tax)
Ravensthorpe	Medallion Metals	Page 1, 3, 16 - 23/10/23 PFS demonstrates technical and commercial viability of RGP' - <a href="https://wcsecure.weblink.com.au/pdf/MM8/02728270.pdf">https://wcsecure.weblink.com.au/pdf/MM8/02728270.pdf</a>	9.2 years	13.9Mt @ 1.8g/t for <b>0.8Moz</b>	95.6%	1.5	777	85	N/A	163	N/A	1,577	3.0 (Post-tax)
Cardinia	Kin Mining	Page 2, 3, 9 - 30/8/19 'Pre-feasibility Study and Updated Ore Reserve for Cardinia' - <a href="https://www.kinmining.com.au/wp-content/uploads/2020/02/190830-PFS-and-Updated-Ore-Reserve-for-CGP.pdf">https://www.kinmining.com.au/wp-content/uploads/2020/02/190830-PFS-and-Updated-Ore-Reserve-for-CGP.pdf</a>	8.2 years	18.2Mt @ 1.4g/t for <b>0.8Moz</b>	92.4%	1.5	368	45	118 <sub>8%</sub>	77	29%	\$1,442	2.4 (Pre-tax)
Gum Creek (A\$2,900/oz case)	Horizon Gold	Page 2, 5 - 20/3/24 'Compelling Gum Creek Scoping Study' - <a href="https://wcsecure.weblink.com.au/pdf/HRN/02786933.pdf">https://wcsecure.weblink.com.au/pdf/HRN/02786933.pdf</a>	10 years	24.5Mt @ 1.1g/t for <b>0.9Moz</b>	95.1%	2.4	888	84	904	239	46%	\$1,931	3.0 (Pre-tax)

# Lady Julie Gold Project Update – ESG

A commitment to environmental sustainability, resource efficiency and diversity



- ✓ Innovative tailings dam design utilising depleted pit and neutralised tailings
- ✓ Solar / hybrid power generation to reduce carbon footprint
- ✓ Maximised water recycling and resource efficiency



- ✓ Focus on safety, diversity and inclusivity
- ✓ Local accommodation in Laverton to maximise social benefits
- ✓ Prioritising local suppliers, workers and contractors

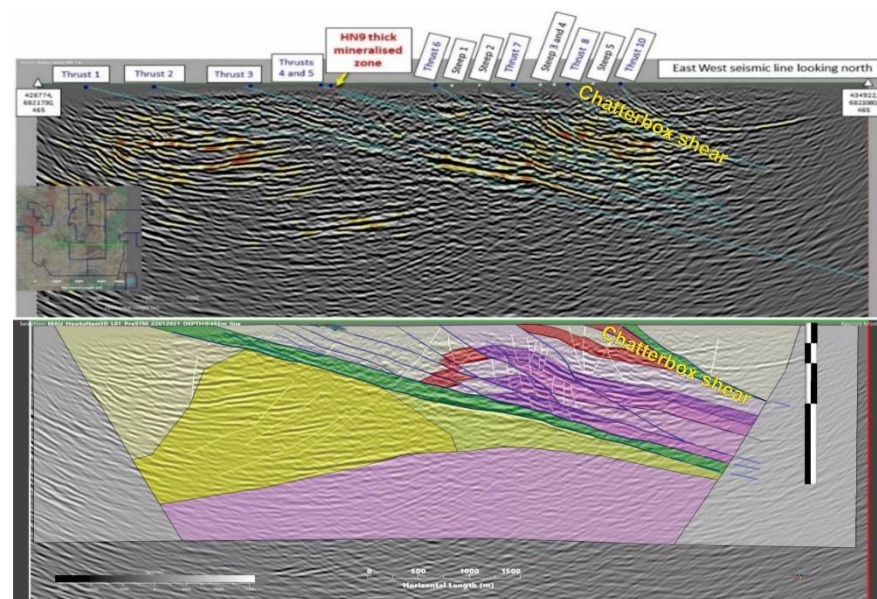
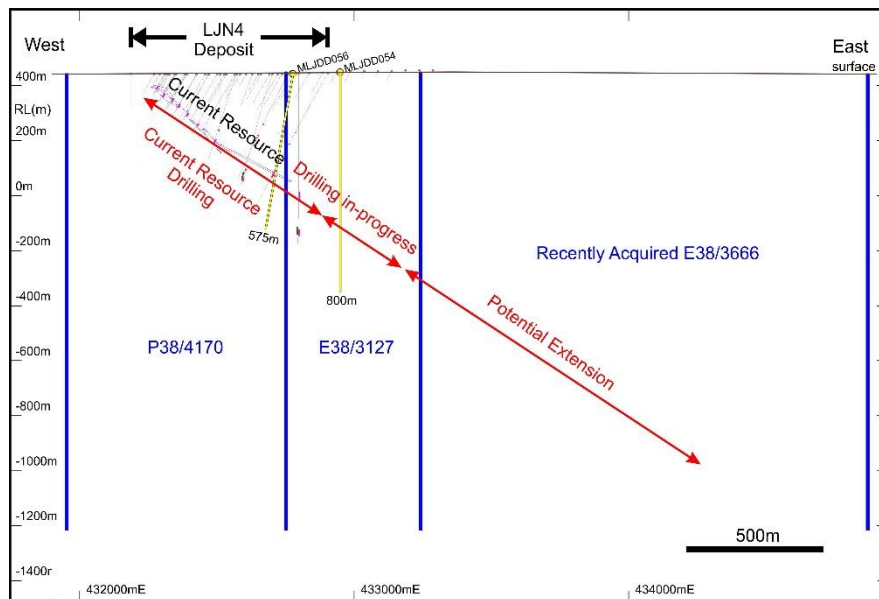


- ✓ Strong Board governance to align Company and shareholder interests
- ✓ Effective Board structure and oversight to enable ESG management
- ✓ Focus on incorporating sustainability into asset planning from the outset

# Lady Julie North 4 – Resource Upside Potential

New tenement E38/3666 purchased covers the eastern potential down dip extension of Lady Julie North 4 down to 2km. 2D seismic also shows persistent thrust zones that correlate with the Chatterbox Shear

Both Drilling and Seismic Show the Potential for LJN4 to Continue to 1.0 to 1.5km Depth



# Select Significant Lady Julie Gold Project Drill Results

Hole	Easting (MGA)	Northing (MGA)	From (m)	To (m)	Width (m)	Gold (g/t)	Type
MLJDD015	432405	6826340	130	175	45	2.65	Core
MLJDD016	432487	6826310	145	175	30	5.53	Core
MLJDD031	432536	6826310	198	218	21	5.37	Core
MLJDD032	432723	6826442	107	116	8.7	15.32	Core
MLJDD033	432908	6826500	408	433	25	3.01	Core
MLJDD034	432643	6826400	151	158	6.8	12.06	Core
MLJDD039	432800	6826560	567	593	26	2.49	Core
MLJDD042	432664	6826610	317	340	23	6.29	Core
MLJDD048	432755	6826610	386	411	25	3.86	Core
MLJRC679	432511	6826310	94	148	54	1.95	1m splits
MLJRC736	432465	6826284	78	126	48	2.12	1m splits
MLJRC779	432455	6826345	173	284	111	1.76	1m splits
MLJRC789	432500	6826380	91	229	138	2.25	1m splits
MLJRC801	432450	6826260	192	248	56	1.37	1m splits
MLJRD802	432580	6826380	196	264	68	1.61	1m splits
MLJRC804	432495	6826610	208	276	68	1.43	1m splits
MLJRC805	432570	6826760	216	236	20	3.44	1m splits
MLJRC806	432690	6826346	180	306	126	2.82	1m splits
		including	244	306	62	4.09	1m splits
LWE03	432437	6826392	156	198	42	4.62	1m splits
MLJRC806	432690	6826346	180	306	126	2.82	1m splits
MLJRCD826	432600	6826310	270.5	300	29.5	2.81	Core
MLJDD017	432510	6826260	160	191.6	31.6	3.51	Core
MLJRC738	432383	6826338	96	157	61	3.56	1m splits



# Total Mineral Resource by Deposit at a 0.5g/t Cutoff<sup>1</sup>

Deposit	Tonnes	Grade (g/t Au)	Contained Oz
<b>Lady Julie North 4</b>			
Indicated	18,203,610	2.13	1,247,108
Inferred	5,412,772	1.68	292,964 <sup>2</sup>
<b>Total</b>	<b>23,616,382</b>	<b>2.03</b>	<b>1,540,072<sup>2</sup></b>
<b>Lady Julie Central</b>			
Indicated	792,000	1.97	50,200
Inferred	541,600	1.26	22,000
<b>Total</b>	<b>1,333,600</b>	<b>1.68</b>	<b>72,200</b>
<b>Hawks Nest 9</b>			
Indicated	1,995,000	1.29	82,800
Inferred	1,182,000	1.25	47,600
<b>Total</b>	<b>3,177,000</b>	<b>1.28</b>	<b>130,400</b>
<b>Hawks Nest 3 &amp; 5, Mount Jumbo and Homeward Bound</b>			
Indicated	837,400	0.94	25,230
Inferred	4,193,700	1.15	155,160
<b>Total</b>	<b>5,031,100</b>	<b>1.12</b>	<b>180,390</b>
<b>Grand Total</b>	<b>33,158,082</b>	<b>1.80</b>	<b>1,923,062</b>

(1) MAU announcement to the ASX 'Increased Lady Julie Gold Project Resource and Project Update 20 January 2025' .



**magnetic**resources<sup>NL</sup>

**Magnetic Resources NL (ASX:MAU)**

**Level 1, 44A Kings Park Road**

**West Perth WA 6005**

**Web: [www.magres.com.au](http://www.magres.com.au)**

**Investor Enquiries:**

**George Sakalidis Managing Director**

**[george@magres.com.au](mailto:george@magres.com.au)**

**+61 411 640 337**