

NEW WORLD METALS PRESENTATION

Dan Lougher

September 2021

WESTERN AREAS LTD



AGENDA

CORPORATE



NICKEL MARKET



GROWTH



EXPLORATION



Disclaimer and forward looking statements

This presentation is being furnished to you solely for your information and for your use and may not be copied, reproduced or redistributed to any other person in any manner. You agree to keep the contents of this presentation and these materials confidential. The information contained in this presentation does not constitute or form any part of any offer or invitation to purchase any securities and neither the issue of the information nor anything contained herein shall form the basis of, or be relied upon in connection with, any contract or commitment on the part of any person to proceed with any transaction.

The distribution of this presentation in jurisdictions outside Australia may be restricted by law, and persons into whose possession this presentation comes should inform themselves about, and observe, any such restrictions. This is not for distribution or dissemination in the U.S.

The information contained in this presentation has been prepared by Western Areas Ltd. No representation or warranty, express or implied, is or will be made in or in relation to, and no responsibility or liability is or will be accepted by Western Areas Ltd, employees or representatives as to the accuracy or completeness of this information or any other written or oral information made available to any interested party or its advisers and any liability therefore is hereby expressly disclaimed. No party has any obligation to notify opinion changes or if it becomes aware of any inaccuracy in or omission from this presentation. All opinions and projections expressed in this presentation are given as of this date and are subject to change without notice.

This document contains forward-looking statements including nickel production targets and cost estimates. These statements are based on assumptions and contingencies that are subject to change without notice, and certain risks and uncertainties that could cause the performance or achievements of Western Areas Ltd to differ materially from the information set forth herein. Often, but not always, forward looking statements can generally be identified by the use of forward looking words such as “may”, “will”, “expect”, “intend”, “plan”, “estimate”, “anticipate”, “continue”, and “guidance”, or other similar words and may include, without limitation, statements regarding plans, strategies and objectives of management, anticipated production and expected costs. Western Areas Ltd undertakes no obligation to revise these forward-looking statements to reflect subsequent events or circumstances. Individuals should not place undue reliance on forward-looking statements and are advised to make their own independent analysis and determination with respect to the forecasted periods, which reflect Western Areas Ltd’s view only as of the date hereof.

The information within this PowerPoint presentation was compiled by Western Areas management, but the information as it relates to exploration results, mineral resources or ore reserves was prepared by Mr Graeme Gribbin, Mr Andre Wulfse or Mr Marco Orunesu-Preiata respectively. Mr Gribbin, Mr Wulfse and Mr Orunesu-Preiata are full time employees of Western Areas Ltd. Mr Gribbin is a member of Australian Institute of Geoscientists (AIG). Mr Wulfse is a Fellow of Australian Institute of Mining and Metallurgy (AusIMM) and Mr Orunesu-Preiata is a member of Australian Institute of Mining and Metallurgy (AusIMM) and have sufficient experience which is relevant to the style of mineralisation and type of deposit under consideration and to the activity which they are undertaking to qualify as Competent Persons as defined in the 2012 Edition of the ‘Australasian Code for Reporting of Exploration Results, Mineral Resources and Ore Reserves’(2012 JORC Code). Mr Gribbin, Mr Wulfse and Mr Orunesu-Preiata consent to the inclusion in this presentation of the matters based on the information in the form and context in which it appears.

This announcement is authorised for market release by Western Areas Limited Managing Director and CEO, Daniel Lougher.

Western Areas Registered Office: L2, 2 Kings Park Road, West Perth, 6005, Australia

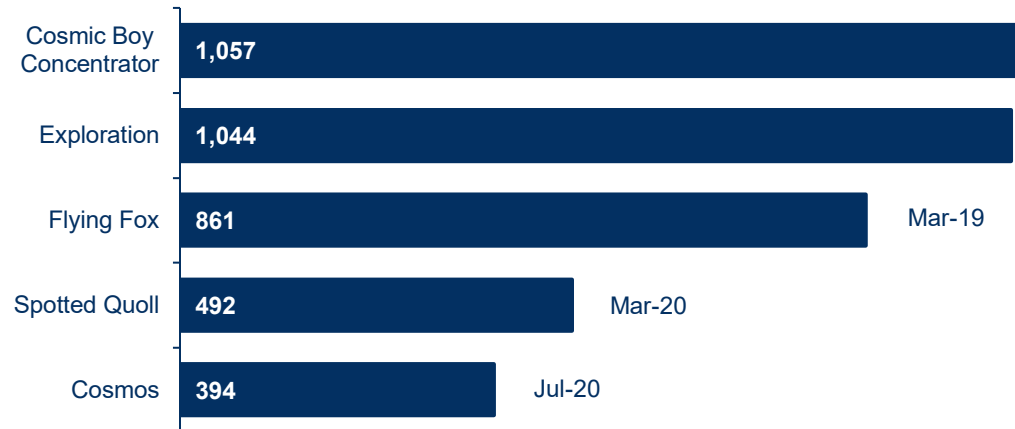
CORPORATE



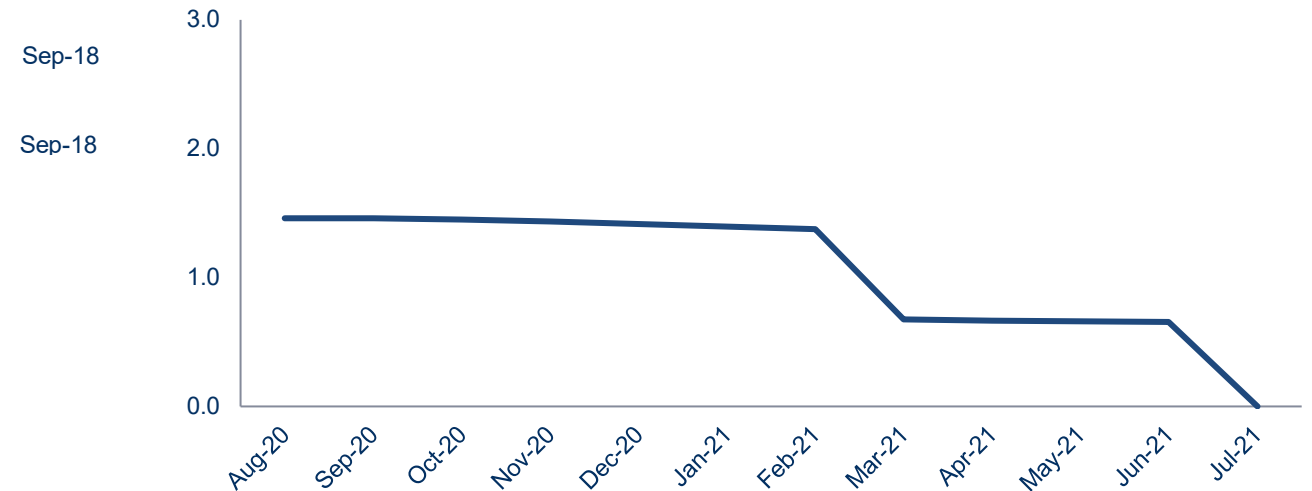
Western Areas, are safe areas



Days LTI free



12 month LTIFR moving average



Corporate overview

“The Company aims to be a sustainable and profitable, nickel focused, base metal miner, building value and scale while maintaining financial strength”

High Quality

- Low Cash Cost
- High Grade Nickel Sulphide

No Debt

- \$151.1m at bank¹

Strong Growth

- Odysseus Mine & AM6
- New Morning
- Diggers South
- Mt Goode

Nickel Leverage

- Panoramic Resources (WSA 19.9%)

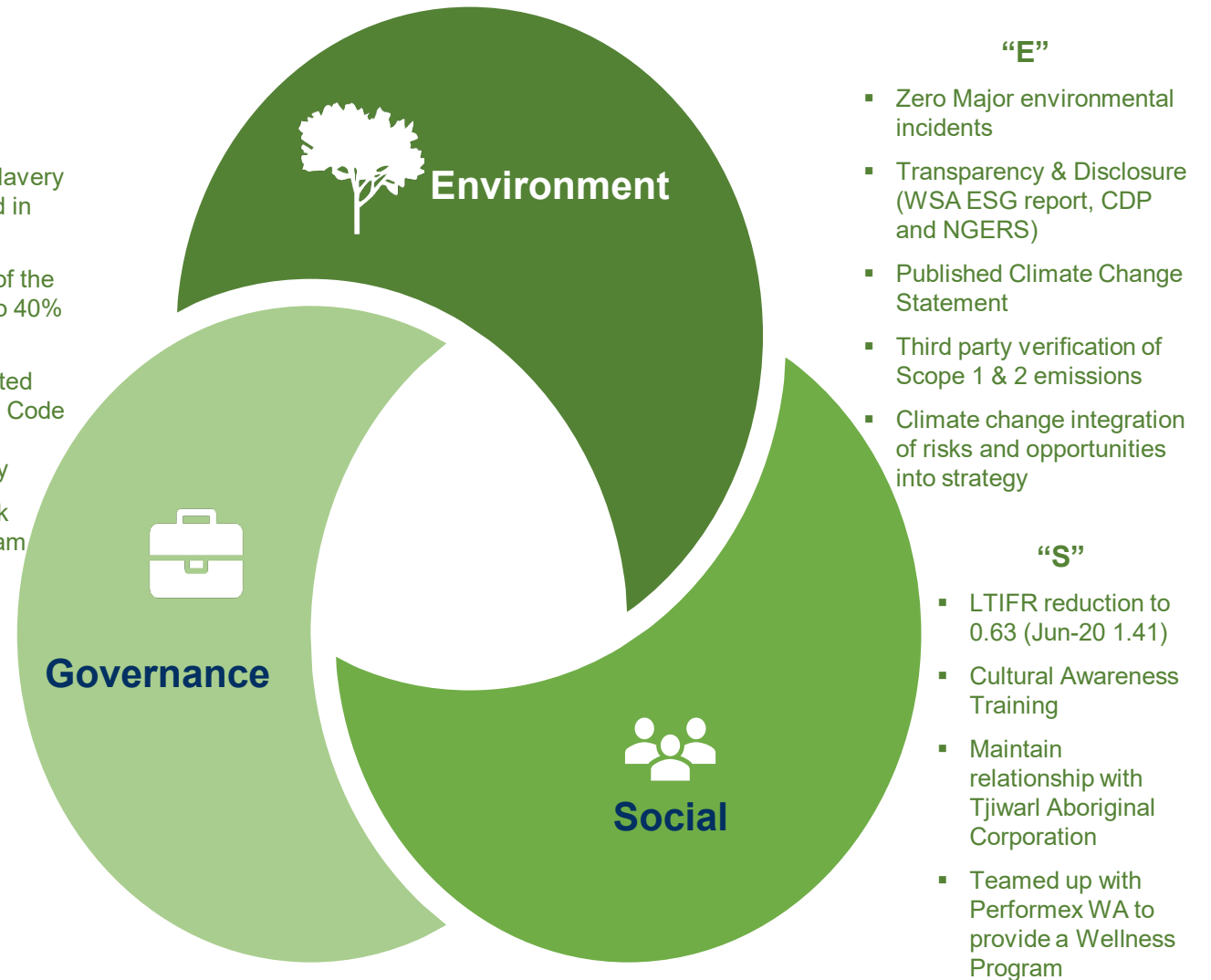


Environment Social Governance



“G”

- Inaugural Modern Slavery Statement published in Mar-21
- Increased diversity of the Board of Directors to 40% NED
- Reviewed and updated key policies such as Code of Conduct & Whistleblower Policy
- Comprehensive Risk Management Program



NICKEL MARKET



Offtake contracts best in class

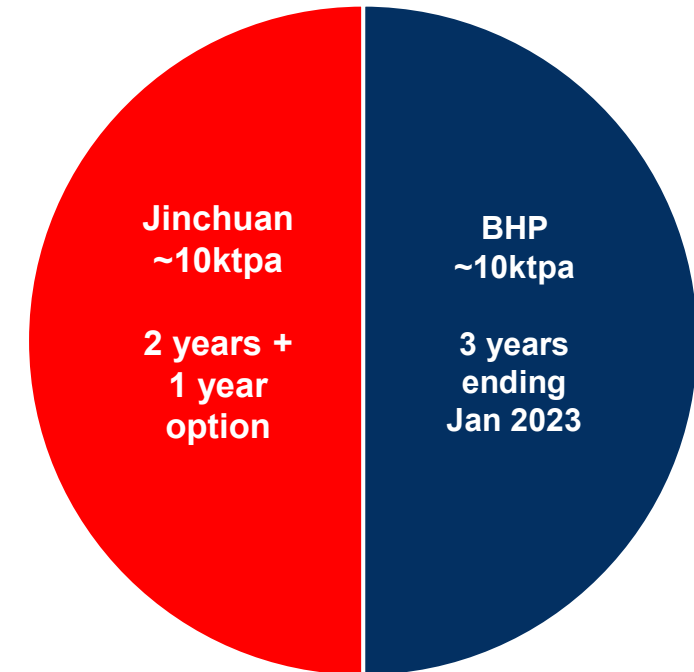
Current contracts executed with strategic partners “Best in Class”

Full benefit of improved commercial terms (compared to previous agreements) in FY21 onwards

Premium blending concentrate - superior commercial terms

Our Partners:

- **BHP: 50%**
 - ✓ Australia's largest nickel producer
 - ✓ Building a nickel sulphate plant in Kwinana Western Australia
- **Jinchuan: 50%**
 - ✓ China's largest nickel cathode producer
 - ✓ Direct feeder of the Chinese nickel sulphate market



Discussion ongoing with offtake parties that are linked to the Electric Vehicle, battery pre-cursor sector for future MREP production of high grade, premium nickel sulphide and potential for Odysseus concentrate to feed this market.



New Odysseus concentrate offtake – timing is good!

- Tender process commenced for the initial, uncontracted Odysseus concentrate
- Strong market environment for sustainable, nickel sulphide concentrates with OEM concerns on emerging nickel deficits
(ie BHP and Tesla Inc deal)
- Korea and Japan moving “faster” to consolidate future offtake contracts. Potential to build new smelter and hydrometallurgical plants
- We may see changes in traditional “smelter short term” to LOM contracts, with improved commercial terms and potential downstream benefits
- Majors active in Ni assets M & A

Estimated electrification impact
per vehicle (avg NMC battery)

40-50kg Ni	50-75kg Cu
5-15kg Co	+ Cu for charging point + Cu for grid access

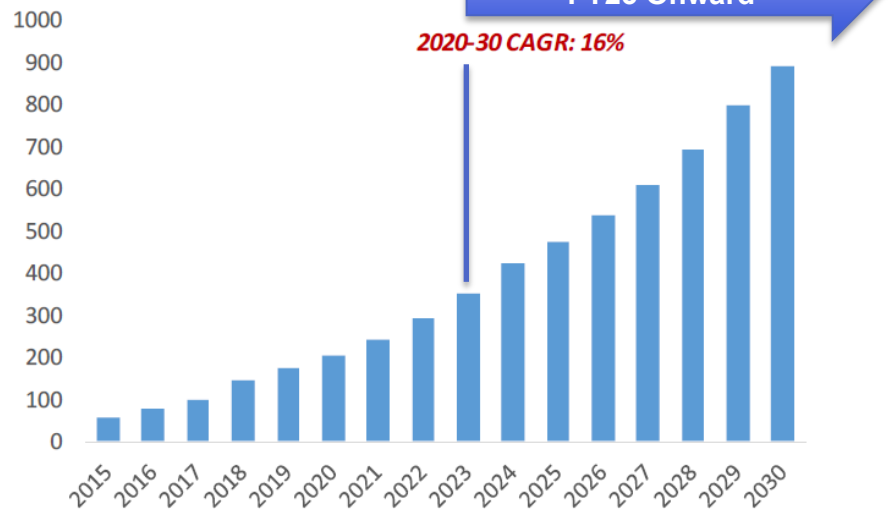


What we are seeing

- **BHP/Tesla Inc** announce partnership for nickel
- **Significant inbound battery producer interest**, targeting nickel offtake to feed production lines
- **Strong growth in EV production** and demand, especially in Europe, with increasing Government incentives globally

NICKEL DEMAND IN BATTERIES

GLOBAL



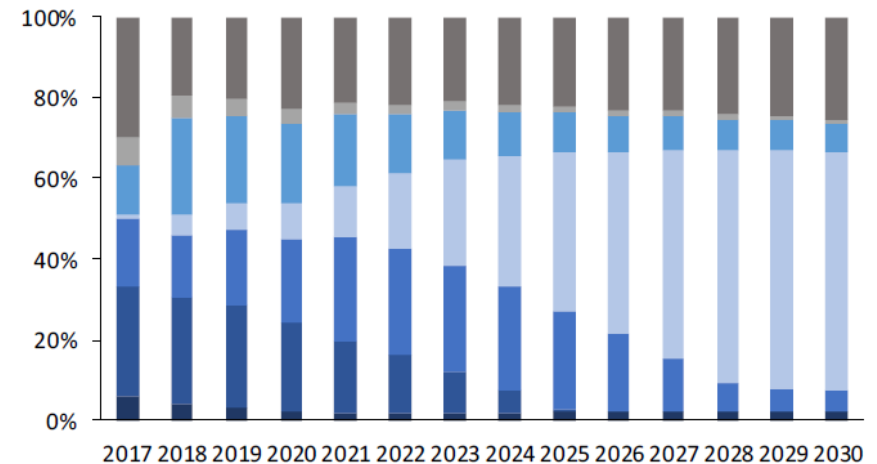
Source: Trafigura Research, SMM, CIAP – March 2020

- **Tsingshan laterite to nickel matte conversion**, this product is needed, but what is the carbon footprint?
- **Jinchuan** (largest nickel cathode producer in China) increasing nickel sulphate volumes. Believed to be investing in pre-cursor production lines

MARKET SHARE

BY TYPE OF CATHODE MATERIAL

Stated as % of the market



■ NCM 111 ■ NCM 532 ■ NCM 622 ■ NCM 811 ■ NCA ■ LMO ■ LFP

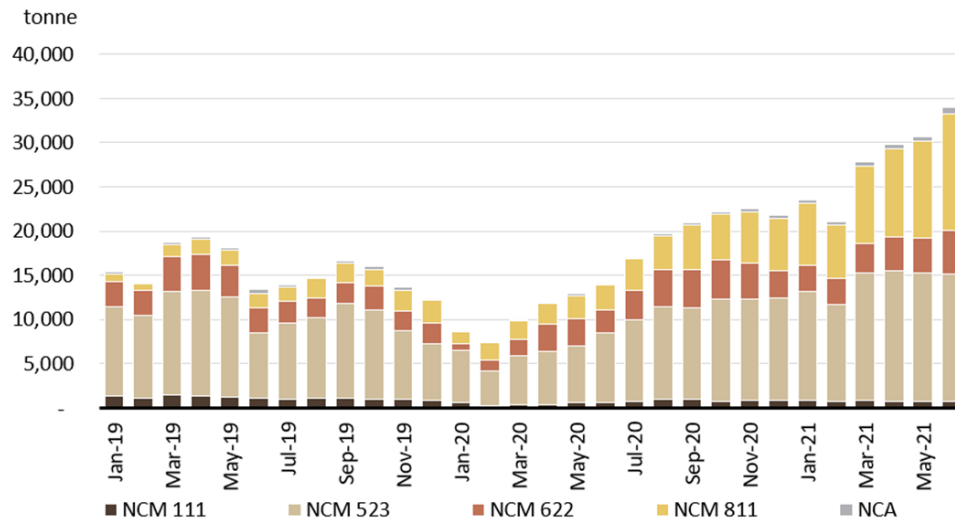
Source: Trafigura Research, SMM



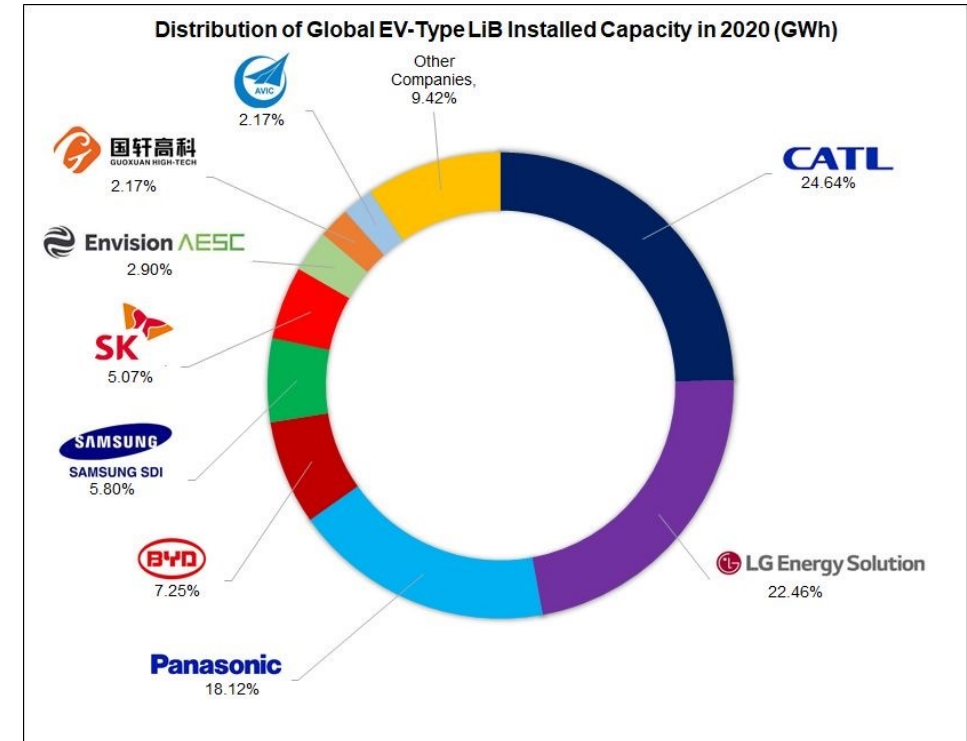
Battery market

- Battery producers currently dominated by China, Korea and Japan
- USA starting to positioning for supply – Looking abroad to find critical battery metals
- **Technology change to NCM 811** which requires higher quantity of nickel, gaining market momentum

Ternary cathode materials production breakdown (ton)



Source: ICCSINO



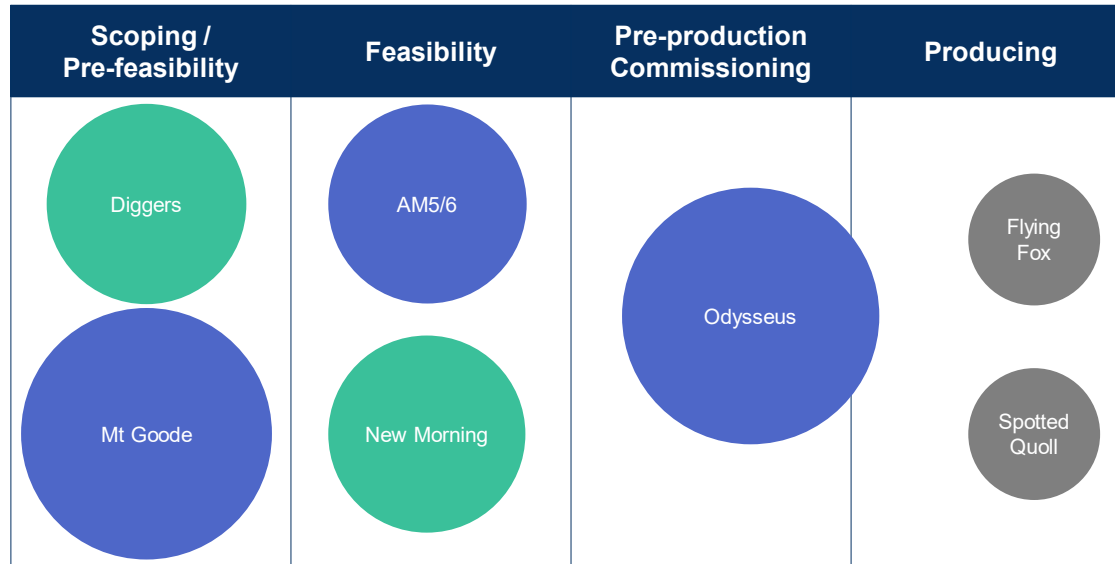
Source: Golden Dragon Capital Ltd



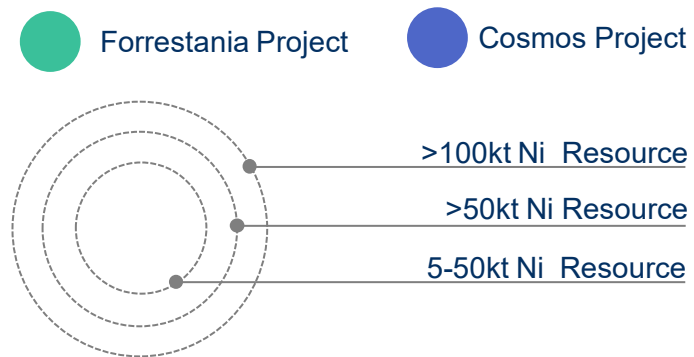
GROWTH



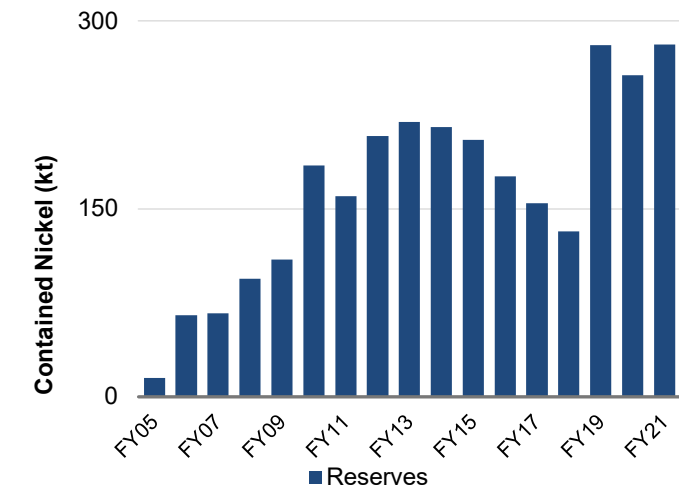
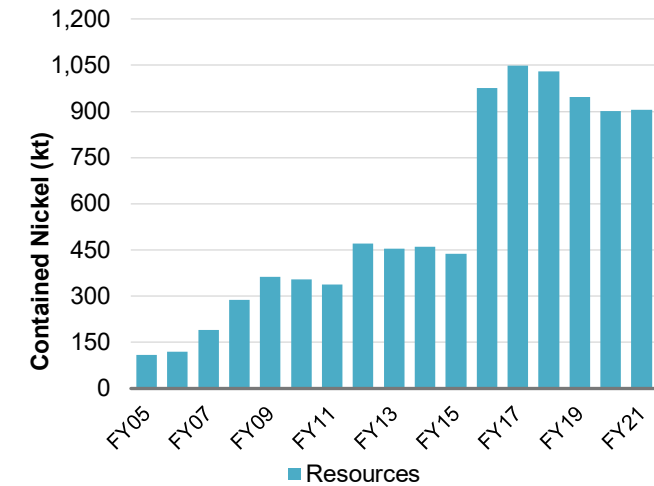
Nickel growth pipeline



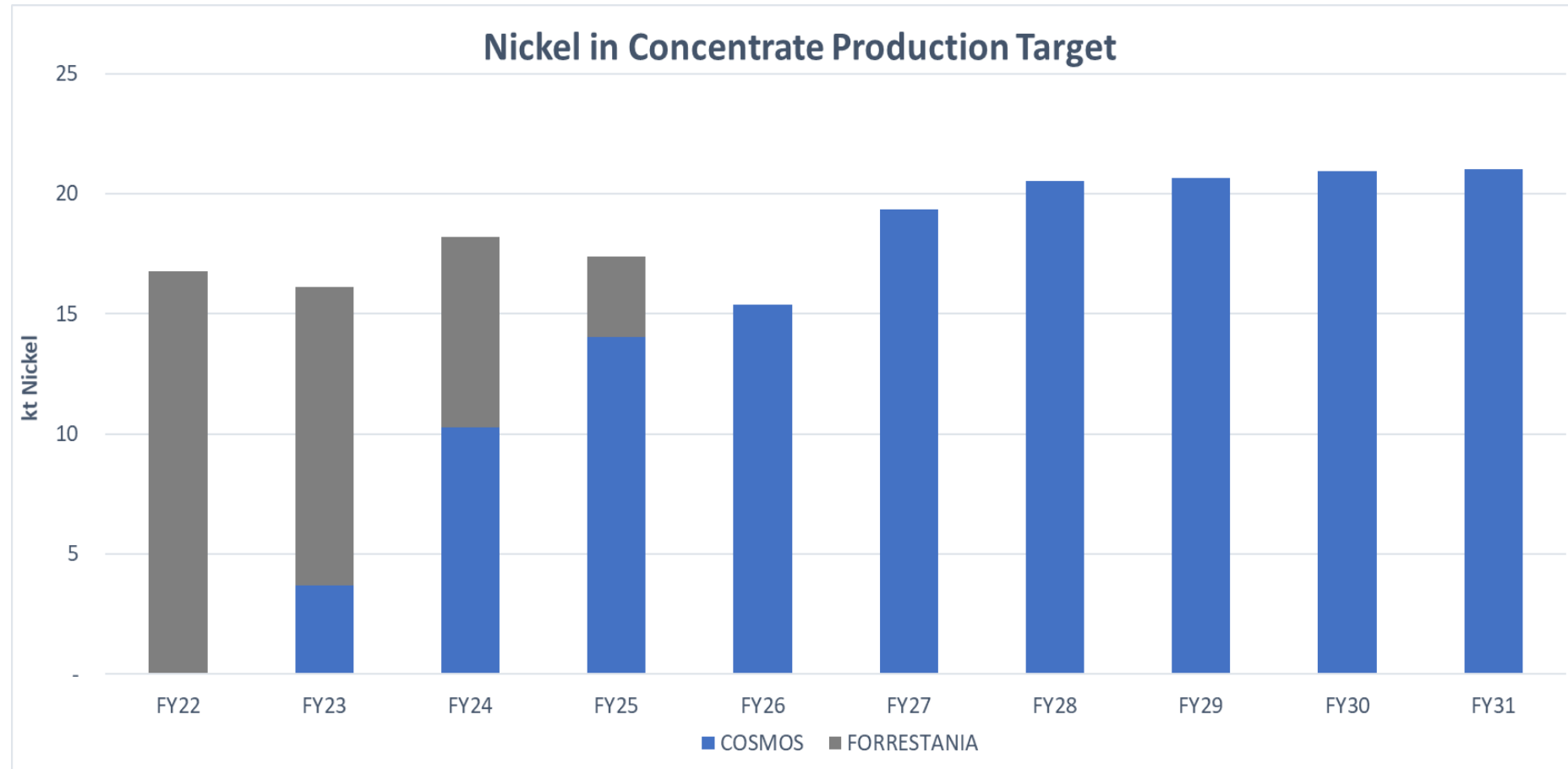
- Many projects in the pipeline to drive nickel production well into the future
- Ore Reserves have substantially increased in FY19 with Odysseus and in FY21 with the addition of AM6



Nickel Resources



10yr production profile



Graph data source:

Forrestania production targets based on Spotted Quoll and Flying Fox ore reserves. Refer to "June 2021 Quarterly Report" announcement

Cosmos production targets based on Odysseus and AM6 ore reserves. Refer to "Strong Odysseus DFS results in Decision to Mine," dated 22 October 2018 and "Maiden Ore Reserve at AM6 Boosts Odysseus Base Case," dated 2 September 2020 announcements

Cosmos Mill upgraded to 1.1Mtpa from FY27 onwards



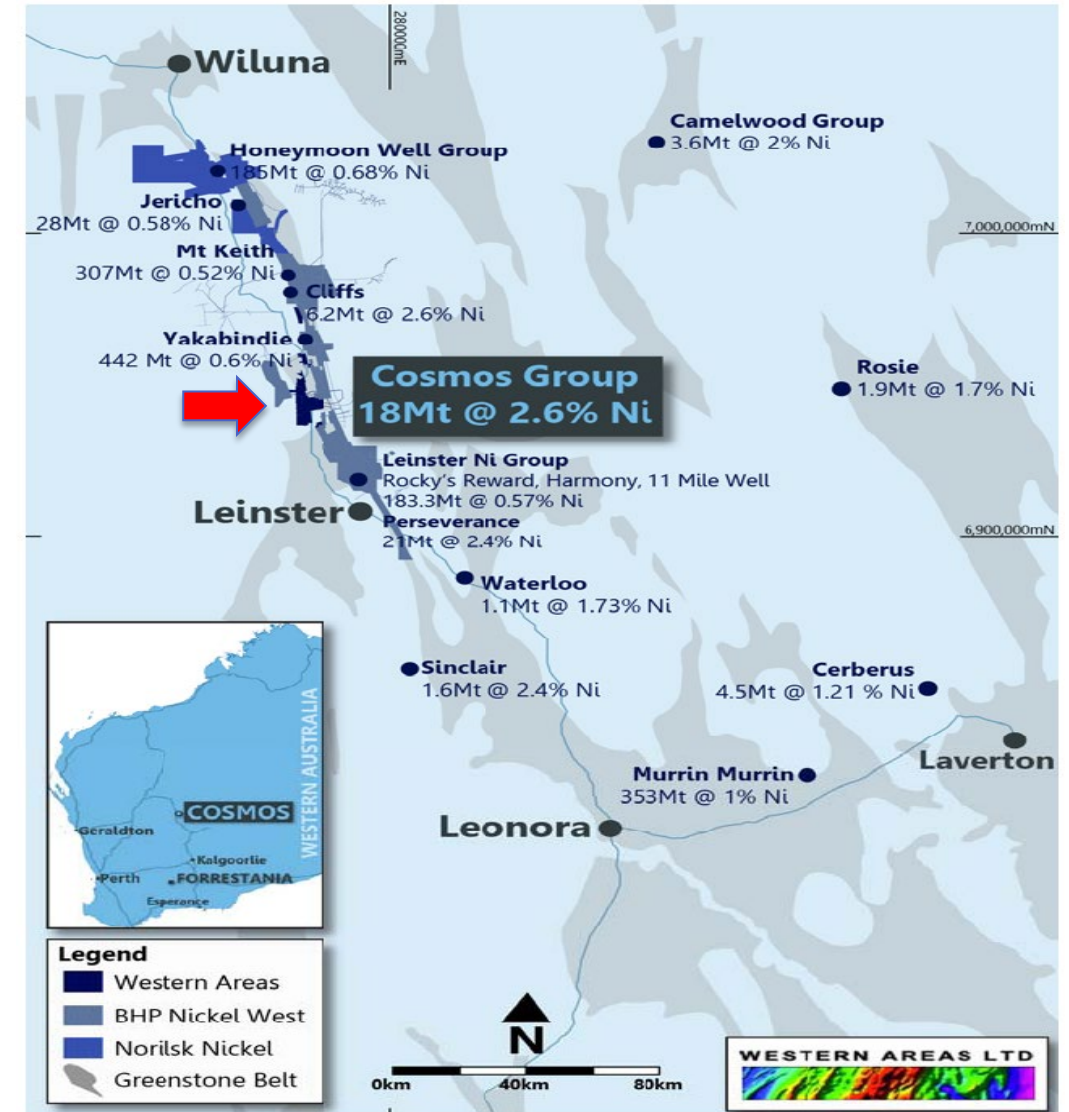
ODYSSEUS MINE DEVELOPMENT



Cosmos nickel operation

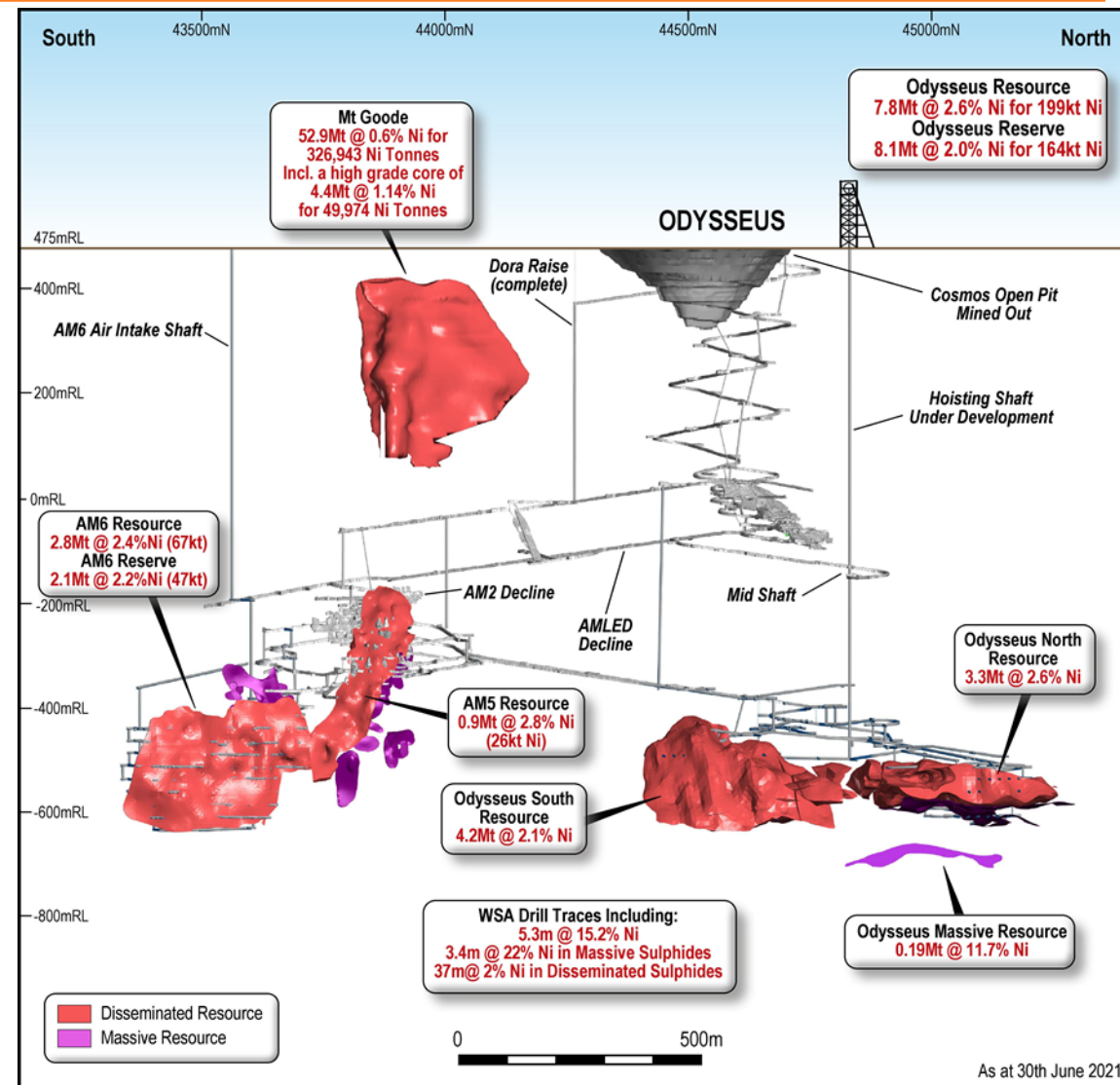
WESTERN AREAS' SECOND OPERATIONAL HUB:

- Outstanding nickel address
- **Total Ore Reserves of 211k tonnes of nickel**
- Strategically located between Nickel West's Leinster and Mt Keith mines
- Established infrastructure



Odysseus mine – a long life, low cost project, 10yrs +

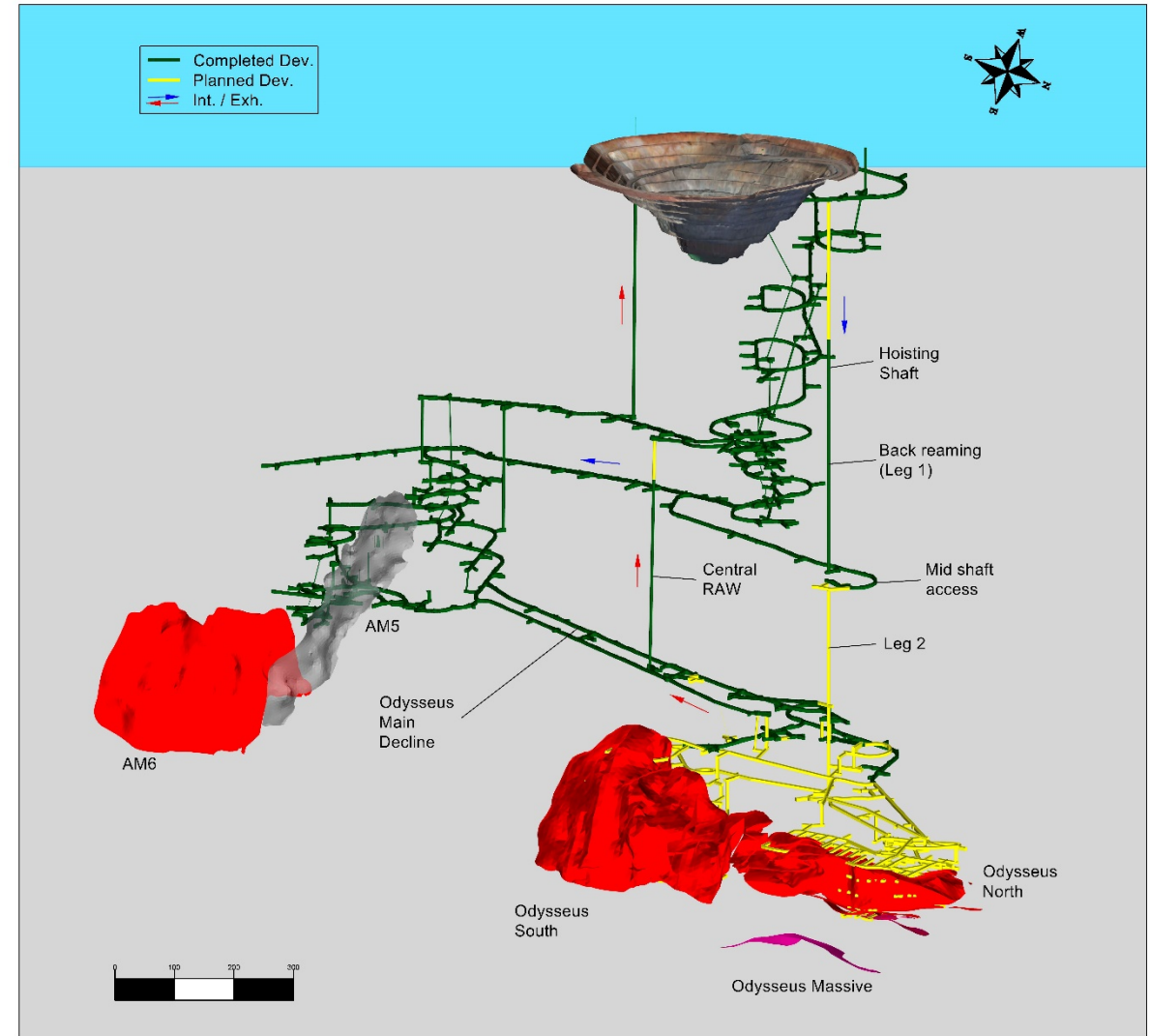
- **Odysseus - Long life, low cost project:**
 - ✓ Ore Reserve 8.1mt @ 2.0% for 164kt nickel
 - ✓ Mine life > 10 years
 - ✓ Attractive AISC
 - ✓ Average nickel in concentrate production 14.5ktpa from FY24
- **AM6 now a value add:**
 - ✓ Ore Reserve 2.1mt @ 2.2% for 47kt nickel
 - ✓ Additional 5ktpa nickel in concentrate from FY27
 - ✓ 211kt of nickel in combined Ore Reserves, increasing mine life and capital efficiency
- **Significant upside:**
 - ✓ Record 22% Ni massive sulphide intersections in lenses below Odysseus



Odysseus mine – underground development progress

■ Pre-production Activities:

- ✓ Headframe and winder infrastructure assets at site
- ✓ Winder house construction well advanced
- ✓ Odysseus decline development advanced 3km, now above the Odysseus orebodies
- ✓ Hoisting shaft pilot hole completed for Leg 1 (630m). Back reaming (5.7m D) advanced 581m (92%)
- ✓ Pre-production mine development capex expenditure profile:
FY22 – A\$160m; FY23 – A\$55m
- ✓ WSA is fully funded with cash and agreed debt facilities



Infrastructure works gaining momentum



Headframe assets at Cosmos ready for installation



Infrastructure works gaining momentum



Why a hoisting shaft?

- Significant economical and environmental benefits versus trucking
- Combined with renewable power = energy efficient site, 85% reduction in CO₂
- Low, consistent opex and proven technology
- Cycle time: ~3 mins
- Save 1.5 ML diesel burnt pa (DPM)
- Remove 5 MW of heat generated from diesel engines
- Remove minimum 200m³/s of additional ventilation requirement

Key Metrics:

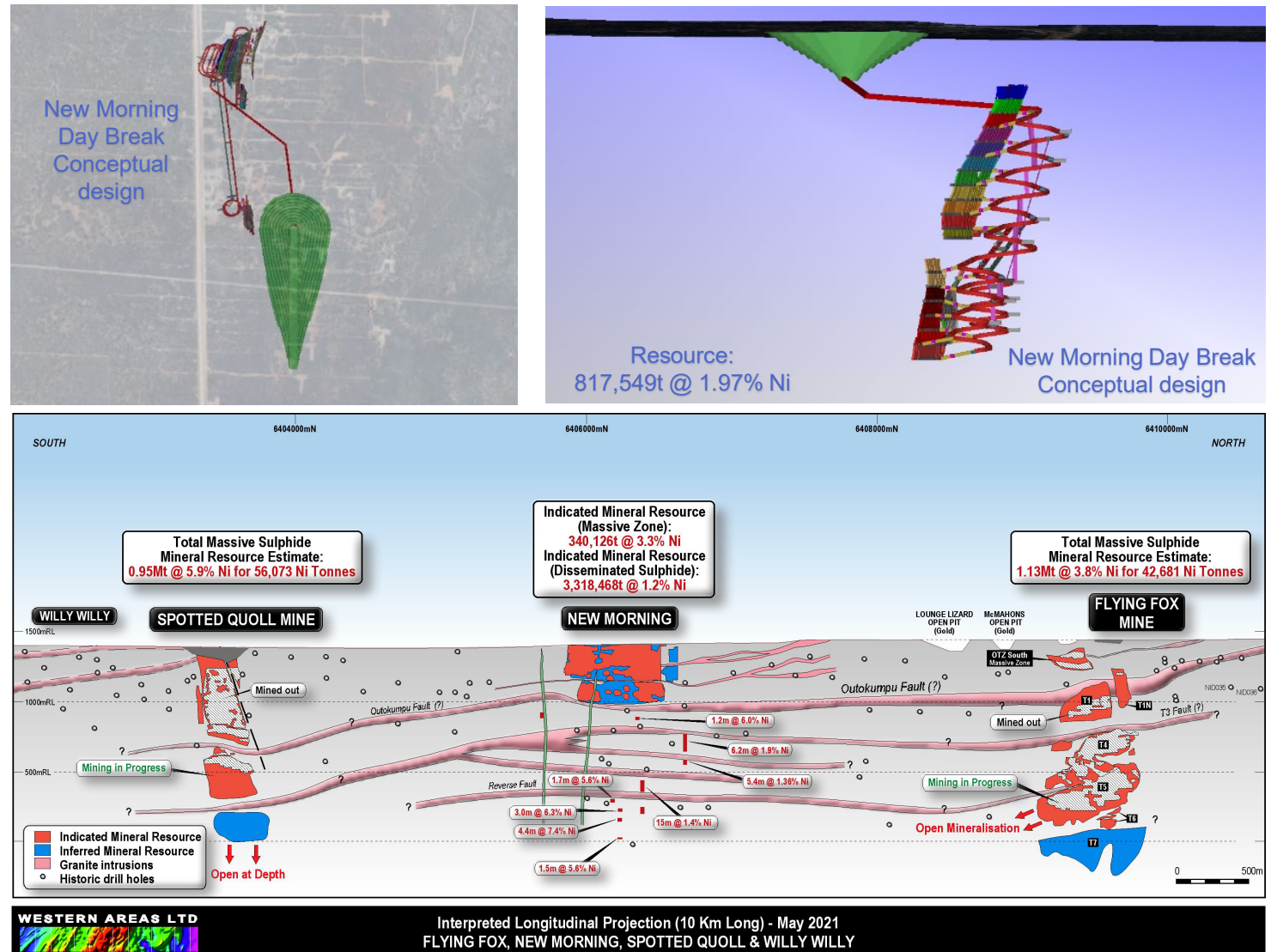
- 5.7m diam. raise bore
- 4 guide ropes per conveyance
- 1.27Mtpa (ore and waste)
- 12 t skips
- 1 truck required to feed shaft
- 4.5 MW peak power



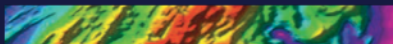
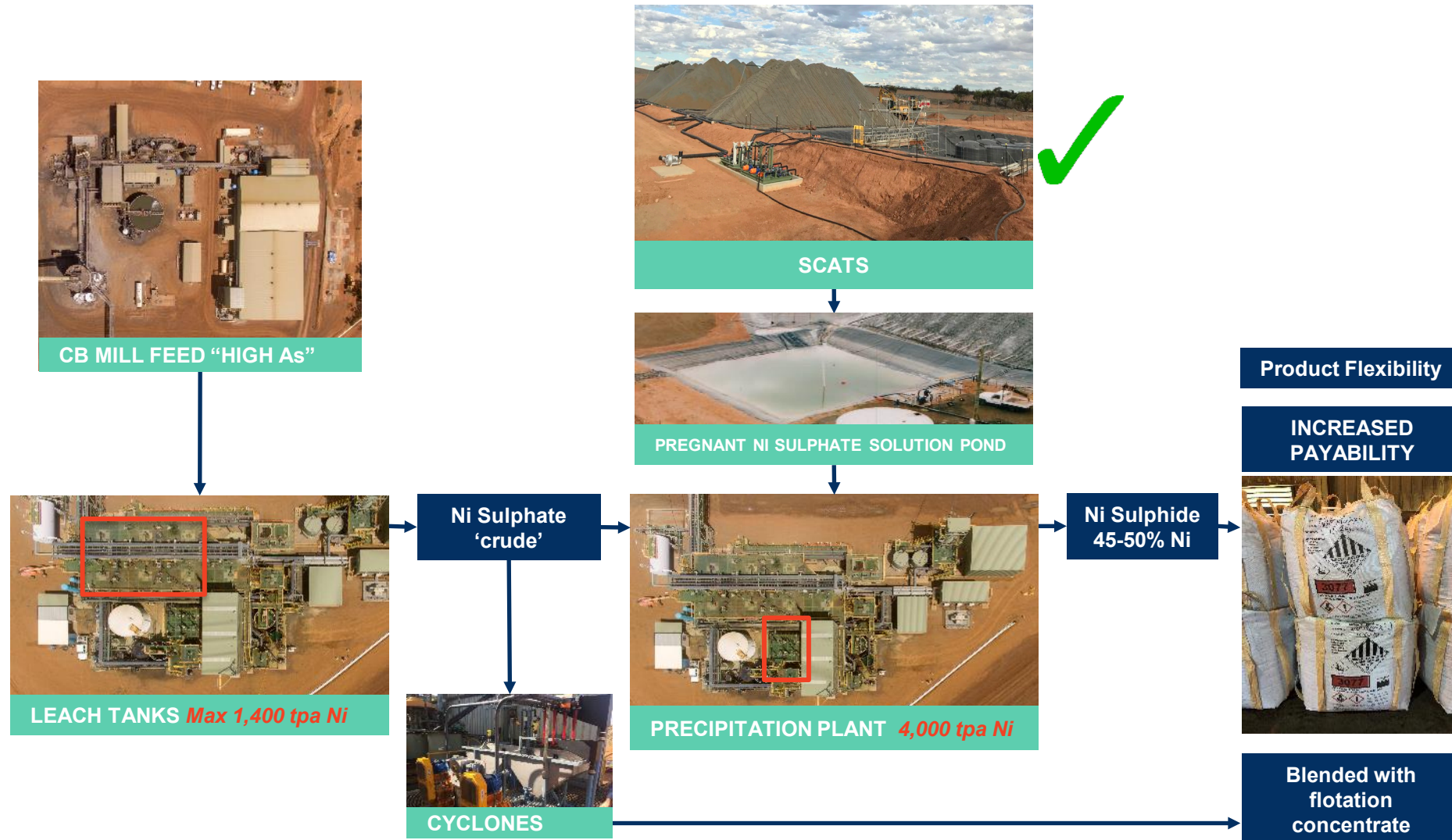
Forrestania nickel operation – opportunities

WESTERN AREAS' CURRENT OPERATIONAL HUB:

- Outstanding nickel address
- **Total Resources of 307k tonnes of nickel**
- Mining since 2005
- Established infrastructure
- Two operating mines Flying Fox and Spotted Quoll
- **New projects developing:**
 - Scats Heap Leach
- **Strong upside potential:**
 - New Morning Daybreak
 - Diggers South



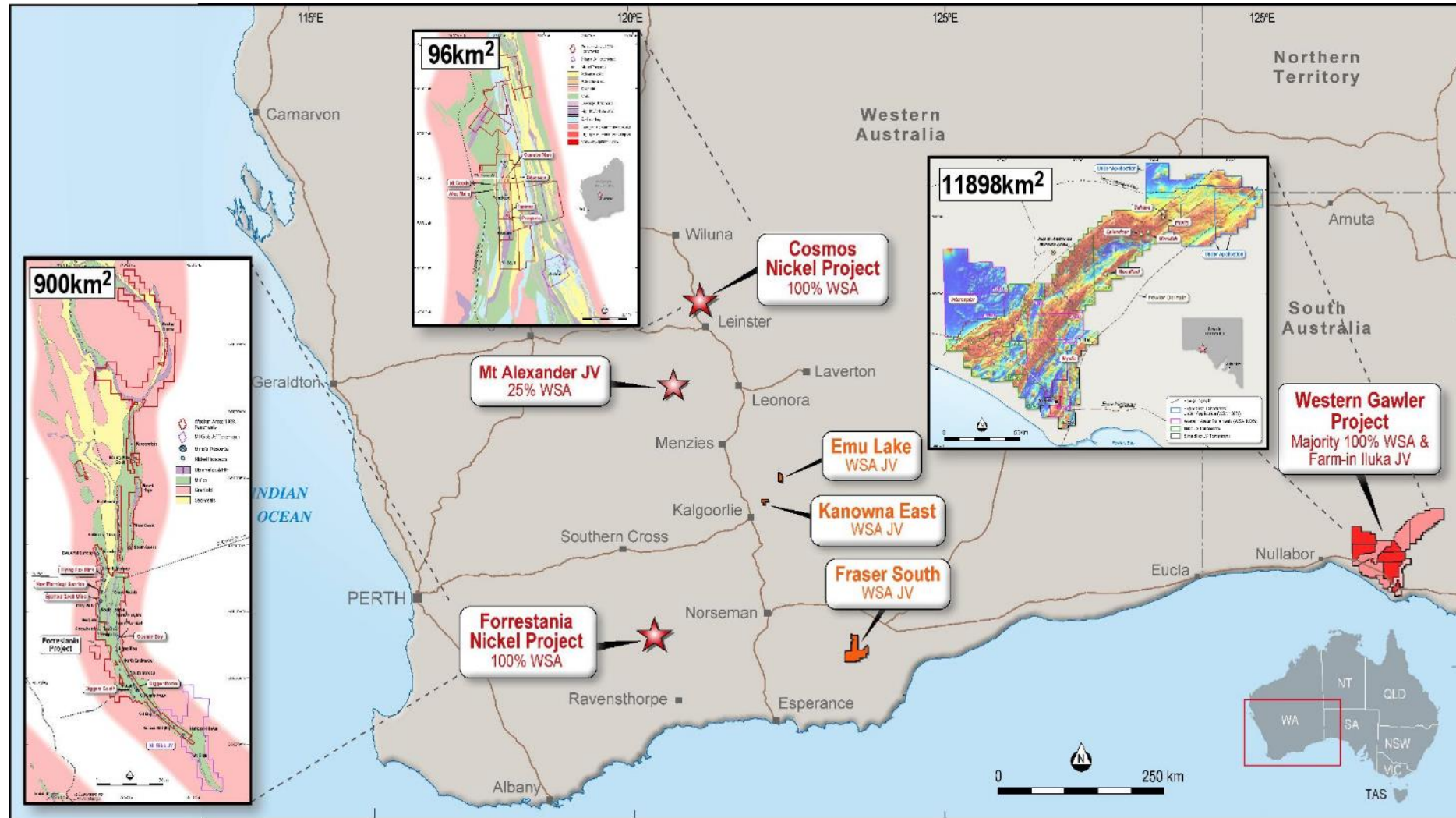
MREP unlocks value – mill scats heap leach project



EXPLORATION



Exploration - key tenement holdings



WESTERN AREAS LTD



- ## FORRESTANIA – NEW Target Space

-
- The figure is a geological map of the Takaishi Belt area. The map displays various geological features and drilling locations. Key elements include:
- Geological Features:**
 - Takaishi Belt:** A central geological unit.
 - Western Ultramafic Belt:** A belt located to the west of the Takaishi Belt.
 - 2D Seismic Reflection - Line 1:** A blue line indicating a seismic reflection profile.
 - Spotted Quoll:** A feature labeled in the western part of the map.
 - New Morning:** A feature labeled in the northwestern part of the map.
 - Drilling Locations:**
 - Target Locations:** Indicated by open circles.
 - Takaishi Belt - Previous drilling:** Indicated by open circles within the Takaishi Belt.
 - Mine / deposit:** Indicated by a yellow circle with a black dot.
 - Legend:**
 - Spotted Quoll Deposit:** Represented by a red dashed line.
 - Projected Western Ultramafic Belt:** Represented by a yellow dashed line.
 - Interpreted Takaishi Ultramafic Belt:** Represented by a purple dashed line.
 - Target Locations:** Represented by open circles.
 - Takaishi Belt - Previous drilling:** Represented by open circles.
 - Mine / deposit:** Represented by a yellow circle with a black dot.
 - Scale and Orientation:**
 - Scale:** 0 to 250m.
 - Orientation:** Looking North.



- 27

WESTERN AREAS LTD



www.westernareas.com.au

ASX:WSA

PO Box 1891 West Perth 6872
+61 8 9334 7777