

# AGM Investor Presentation – Robust PFS

15 May 2025

**Paul Bibby**  
Managing Director

[www.akoravy.com](http://www.akoravy.com)  
**ASX:AKO**



# Disclaimers

The information in this Presentation is of a general nature and does not purport to be complete nor does it contain all the information which a prospective investor may require in evaluating a possible investment in the Company or that would be required in a prospectus or other disclosure document prepared in accordance with the requirements of the Corporations Act 2001 (Cth) (Corporations Act). The Presentation is not a prospectus, disclosure document, product disclosure statement or other offering document under Australian law or under any other law. This Presentation has not been filed, registered or approved in any jurisdiction.

The information contained in this Presentation is not investment, financial product advice or recommendation to acquire Shares. This Presentation has been prepared without taking into account your investment objectives, financial situation or any other particular needs. This Presentation does not and will not form any part of any contract for the acquisition of shares. Each recipient of this Presentation should make its own enquiries and investigations regarding all information in this Presentation. Before making an investment decision, you should consider whether it is a suitable investment for you in light of your own investment objectives, financial situation and particular needs and having regard to the merits or risks involved. Independent financial advice is recommended.

This presentation does not constitute an offer to sell, or a solicitation of an offer to buy, any securities in any jurisdiction. The distribution of this presentation and the offer of securities is restricted in jurisdictions outside Australia. In particular, this presentation may not be released to US wire services or distributed in the United States. This presentation does not constitute an offer to sell, or the solicitation of an offer to buy, any securities in the United States or any jurisdiction in which such an offer would be illegal. The securities described in this presentation have not been, and will not be, registered under the US Securities Act of 1933 or the securities laws of any state or other jurisdiction of the United States. Accordingly, the securities described in this presentation may not be offered or sold in the United States except in transactions exempt from, or not subject to, the registration requirements of the US Securities Act and applicable US state securities laws.

All statements included herein, other than statements of historical fact, are Forward Looking Statements and are subject to a variety of known and unknown risks and uncertainties which could cause actual events or results to differ materially from those reflected in the Forward Looking Statements. The Forward Looking Statements in this corporate presentation may include, without limitation, statements about the company's plans for its exploration projects and future exploration, evaluation and development including drilling activities, quantification of mineral resources, feasibility studies, the construction and development of the Bekisopa Project, the company's business strategy, plans and outlook; the merit of the company's mineral properties; mineral exploration potential, timelines; the future financial or operating performance of the company and cost guidance; expenditures; approvals and other matters.

Often, but not always, these Forward Looking Statements can be identified by the use of words such as "estimate", "estimated", "potential", "planned", "open", "future", "assumed", "projected", "calculated", "used", "detailed", "has been", "gain", "upgraded", "expected", "offset", "limited", "contained", "reflecting", "containing", "conduct", "increasing", "remaining", "to be", "periodically", or statements that events, "could" or "should" occur or be achieved and similar expressions, including negative variations.

Forward Looking Statements involve known and unknown risks, uncertainties and other factors which may cause the actual results, performance or achievements of the company to be materially different from any results, performance or achievements expressed or implied by the Forward Looking Statements. Such uncertainties and factors include, among others, changes in general economic conditions and financial markets; changes in commodity prices; technological and operational hazards in mine development activities; risks inherent in mineral exploration; uncertainties inherent in the estimation of mineral reserves, mineral resources, and metal recoveries; construction delays, the timing and availability of financing; governmental and other approvals; political unrest or instability in countries where IPR is active; labour relations issues; as well as those factors discussed under "Risk Factors".

Although the Company has attempted to identify important factors that could cause actual actions, events or results to differ materially from those described in Forward Looking Statements, there may be other factors that cause actions, events or results to differ from those anticipated, estimated or intended. Forward Looking Statements contained herein are based on the assumptions, beliefs, expectations and opinions of management, including but not limited to estimates of future exploration success; expectations on economic viability of any mineral resource identified; expectations regarding future construction costs; expected trends in mineral prices and currency exchange rates; that the company's activities will be in accordance with the company's public statements and stated goals; that there will be no material adverse change affecting the company or its properties; that all required approvals will be obtained; that there will be no significant disruptions affecting operations, including the development and construction of the Bekisopa Project or any other project the Company seeks to advance, and such other assumptions as set out herein.

Forward Looking Statements are made as of the date hereof and the Company disclaims any obligation to update any Forward Looking Statements, whether as a result of new information, future events or results or otherwise, except as required by law. There can be no assurance that Forward Looking Statements will prove to be accurate, as actual results and future events could differ materially from those anticipated in such statements. Accordingly, investors should not place undue reliance on Forward Looking Statements. This corporate presentation also refers to non-IFRS financial measures, such as future guesstimate of cash cost per tonne of processed ore and guesstimates of operating cash flow. These measures do not have a standardized meaning or method of calculation, even though the descriptions of such measures may be similar.

## Competent Person Statement

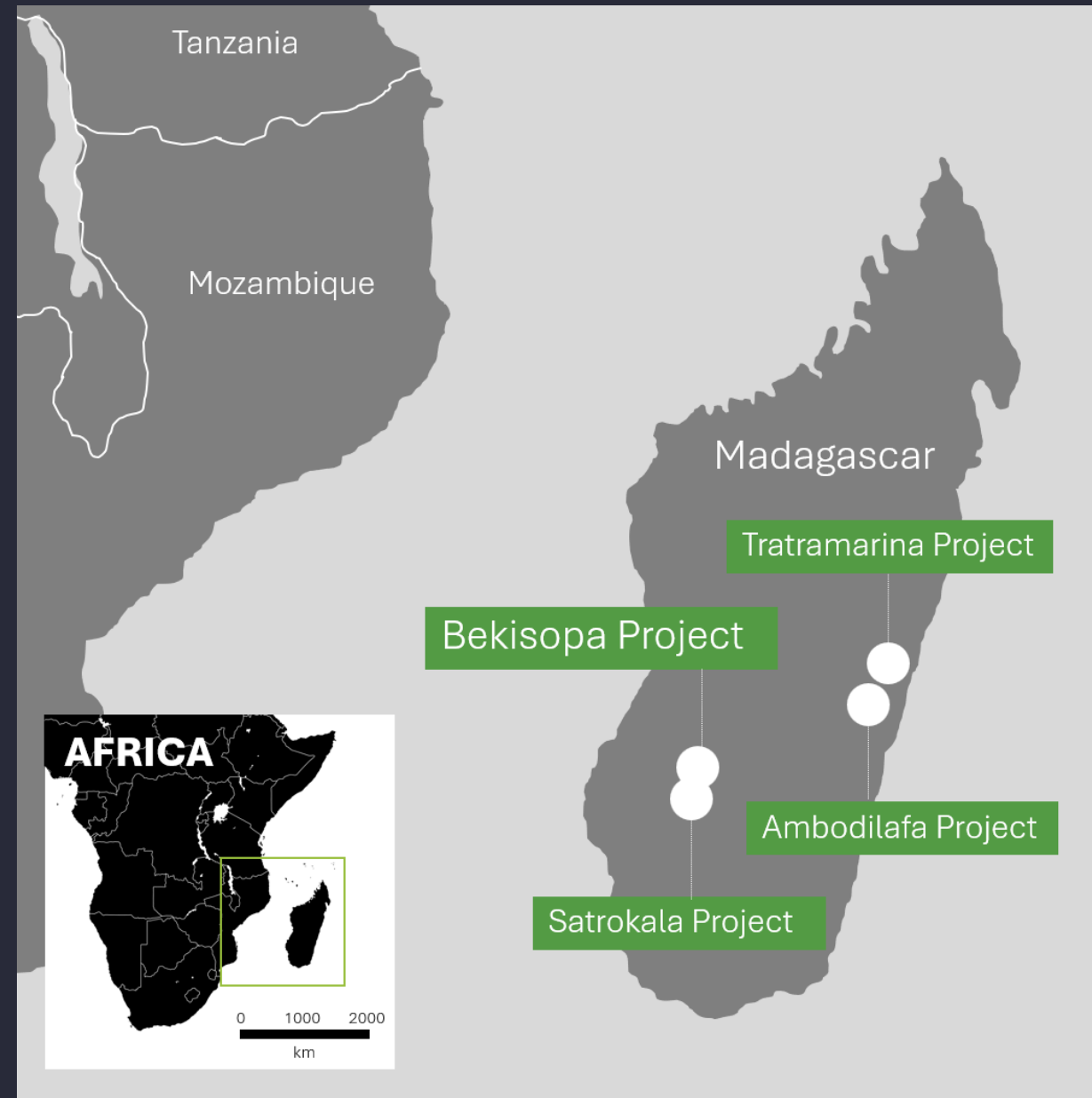
The information in this Presentation that relates to Exploration Targets and Exploration Results is based on information compiled by Mr Jannie Leeuwner – BSc (Hons) Pr.Sci.Nat. MGSSA and is a full-time employee of Vato Consulting LLC. Mr. Leeuwner is a registered Professional Natural Scientist (Pr.Sci.Nat. - 400155/13) with the South African Council for Natural Scientific Professions (SACNASP). Mr. Leeuwner has sufficient experience which is relevant to the style of mineralisation and type of deposits under consideration and the activity being undertaken to qualify as a Competent Person as defined in the Note for Mining Oil & Gas Companies, June 2009, of the London Stock Exchange and the 2012 Edition of the 'Australian Code for Reporting of Exploration Results, Mineral Resources and Ore Reserves' (JORC Code). Mr. Leeuwner consents to the inclusion of the information in this release in the form and context in which it appears.

The information in this Presentation that relates to Mineral Resources for the South Bekisopa Iron Project as announced on the 11th July 2023 is based on information prepared by Mr Richard Ellis BSc, MSc, MCSM, FGS, CGeol, EurGeol and is a full-time employee of Wardell Armstrong International. Mr Ellis is a Chartered Geologist of the Geological Society of London and has sufficient experience relevant to the style of mineralisation, the type of deposit under consideration and to the activity undertaken to qualify as a Competent Person as defined in the 2012 edition of the 'Australasian Code for Reporting of Exploration Results, Mineral Resources and Ore Reserves'. Mr Ellis consents to the inclusion of the information in the release in the form and context in which they appear.

The information in this Presentation for the South Bekisopa Iron Project that relates to Mining and Financial Results of the updated Scoping Study for the South Bekisopa Iron Project is based on information prepared by Mr Colin Davies (Mining Engineer) BEng, MSc, CEng, ACSM, MIMMM, QMR who is a full-time employee of Wardell Armstrong International and Mr Winsor Lewis (Financial Analyst) BSc, ARCS, Management Accountant who is a sub-consultant to Wardell Armstrong International. Mr Colin Davies is a Chartered Engineer of the Institute of Materials, Mineral and Mining UK, and Mr Winsor Lewis is a Management Accountant. Mr Davies and Mr Lewis both consent to the inclusion of the information in the release in the form and context in which they appear.

AKORA Resources  
is focused on the  
development of  
**high-grade iron ore**  
projects in  
Madagascar.

**Flagship Project -** Bekisopa,  
Start-Up Project – DSO  
Future – DRI Concentrate.





## Stage One Development

PFS confirms Bekisopa's Stage One 2Mtpa high-grade direct shipping iron ore operation has strong economics.

PFS shows the capital investment delivering revenues of **A\$1.25 Billion** and **A\$0.5 Billion** cash flow (pre-tax)\*.

\*Refer ASX Announcement 31/03/25 *Bekisopa high-grade iron ore project PFS confirms a robust 2Mtpa DSO Operation with an 86% IRR.*



Bekisopa Direct Shipping Ore operation will supply Blast Furnace-Basic Oxygen Furnace (BF-BOF) steelmakers with Lump and Fines product at an average 61.6% Fe grade.

# PFS confirms DSO project has strong economics<sup>^\*</sup>

\* At a benchmark price of US\$100 / tonne

Annual Production

**2Mt**

Average 61.6% Fe grade

Initial Mine Life

**6 years**

Revenue

**US\$789M**

We believe that further drilling will confirm additional mine life, and the vision for a many decade high-grade iron ore concentrate project beyond the initial DSO start-up phase is achievable.

Capital Cost

**US\$61M**

NPV<sub>10</sub> (pre-tax)

**US\$147M**

IRR (pre-tax)

**86%**

C1 cash cost (FOB)

**US\$42/t**

Pre-tax cash flow

**US\$310M**

Capital payback

**1.8 years**

<sup>^</sup>Refer ASX Announcement 31/03/25 *Bekisopa high-grade iron ore project PFS confirms a robust 2Mtpa DSO Operation with an 86% IRR.*



# Bekisopa's **high-grade iron DSO** is close to surface.

**DSO Outcrop**  
**~67% Fe\***



**Trench 36: High-grade lump and fines iron ore**  
**DSO weathered zone, 2.2m at ~66% Fe\***





# Start-Up Capital cost of US\$60.6M.

- The capital cost breakdown developed by AKORA and WAI covers all activities from mining through to ship loading.
- PFS Capital cost includes US\$6.8M of Owners and EPCM costs, contingency at~15% and Government 3% Social and Community Fund payment.

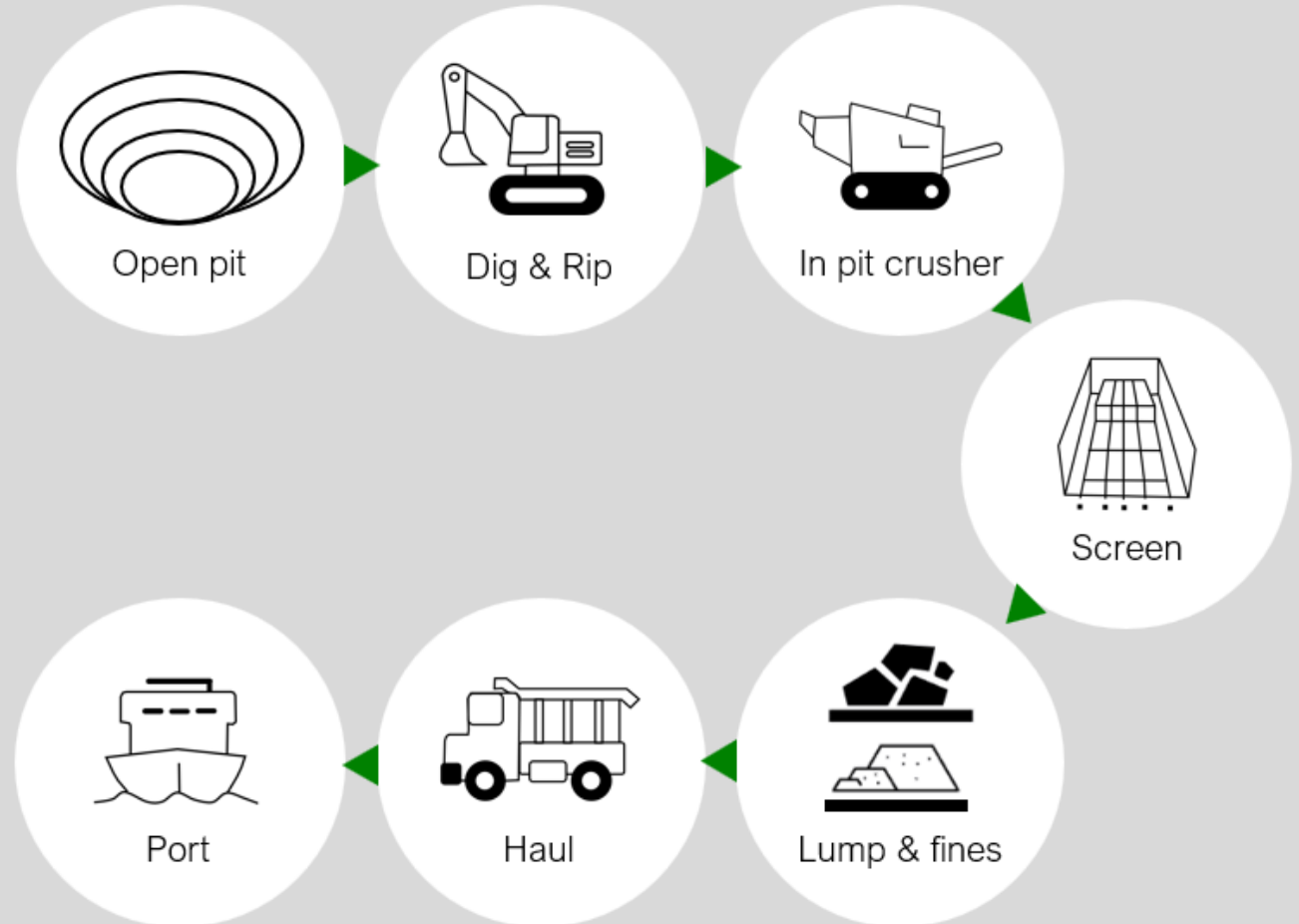
## PFS Capital costs (US\$)

Contingency	7.8M
Government 3% Social Fund	1.85M
EPCM	6.8M
Port	2.3M
Roads	29.4M
Facilities	6.5M
Processing (crush, screen, magnetic)	4.8M
Mining	1.2M

# Mining for the Bekisopa DSO will be simple shallow open pit excavation using shovel and truck with **no drill and blasting**.

- Mobile crushing and screening equipment to be used initially with magnetic separation after Year 3.
- Contract truck haulers to deliver product to the existing Toliara Port where a mobile conveyor will load a transshipping barge.

## Process flow diagram





Over life of mine, the DSO operation delivers 40% Lump at 61.8% Fe and 60% Fines product at 61.4% Fe.



Geotechnical studies show that the DSO reserve will not require drill and blasting, just conventional truck and shovel mining then crushing and screening to produce Lump and Fines iron products at LOM average blended grade of 61.6% Fe.

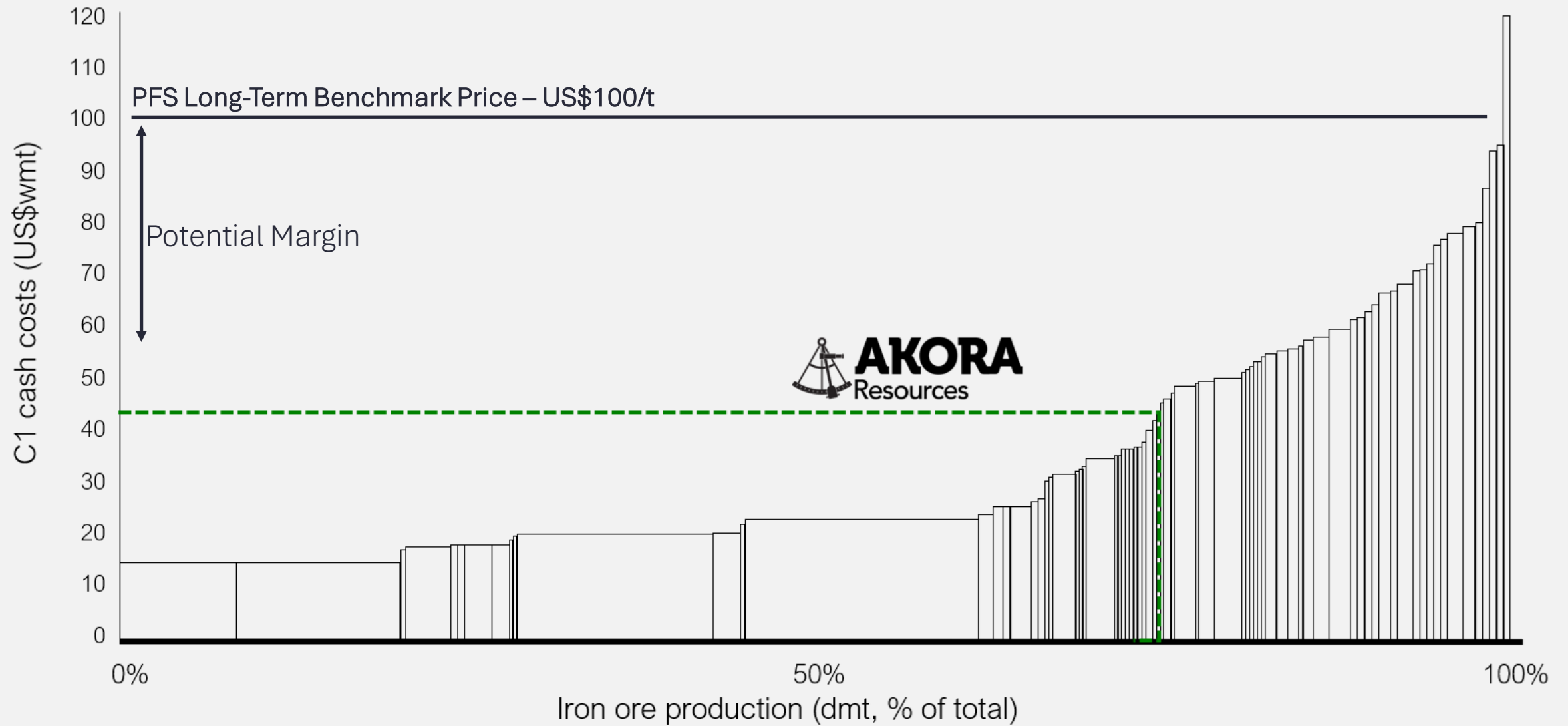
# C1 cash cost of US\$42.3/t is cost competitive compared to potential peers.

- The operating cost breakdown developed by AKORA and WAI covers all activities from mining through to ship loading.
- Each operating cost was developed using supplied contractor costs and built up using the PFS mine and production plans.

PFS operating cash costs by operating centre, Life of Mine Average (\$US/t).

G&A	3.00
Port and Transhipping (contractor)	8.60
Haulage to port (contractor)	24.00
Processing (crush, screen, magnetic)	2.30
Mining (contractor)	4.40

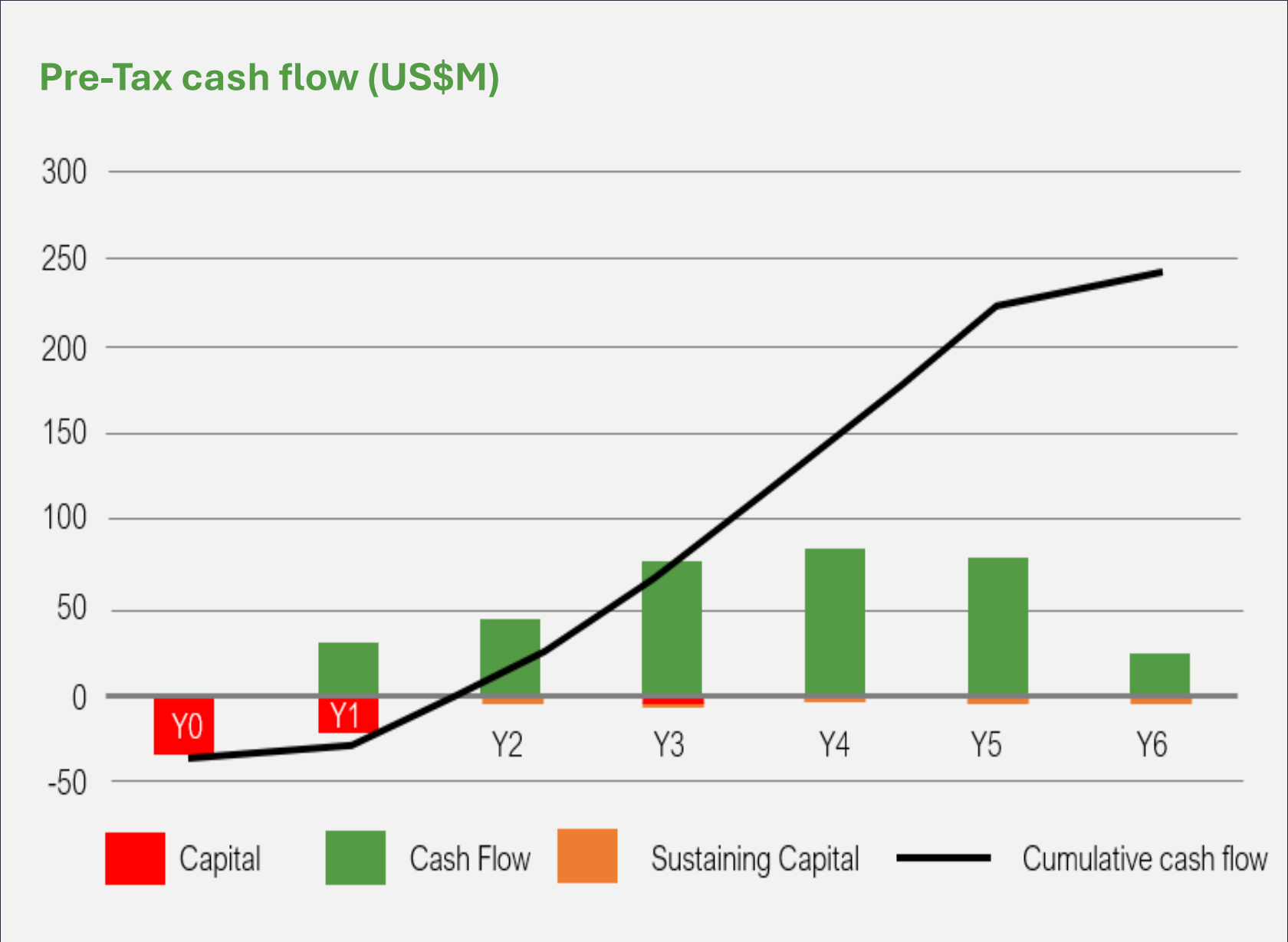
## C1 cost curve





Start-up capital  
of US\$60.6M  
delivers strong,  
ongoing cash  
flow – US\$310m.

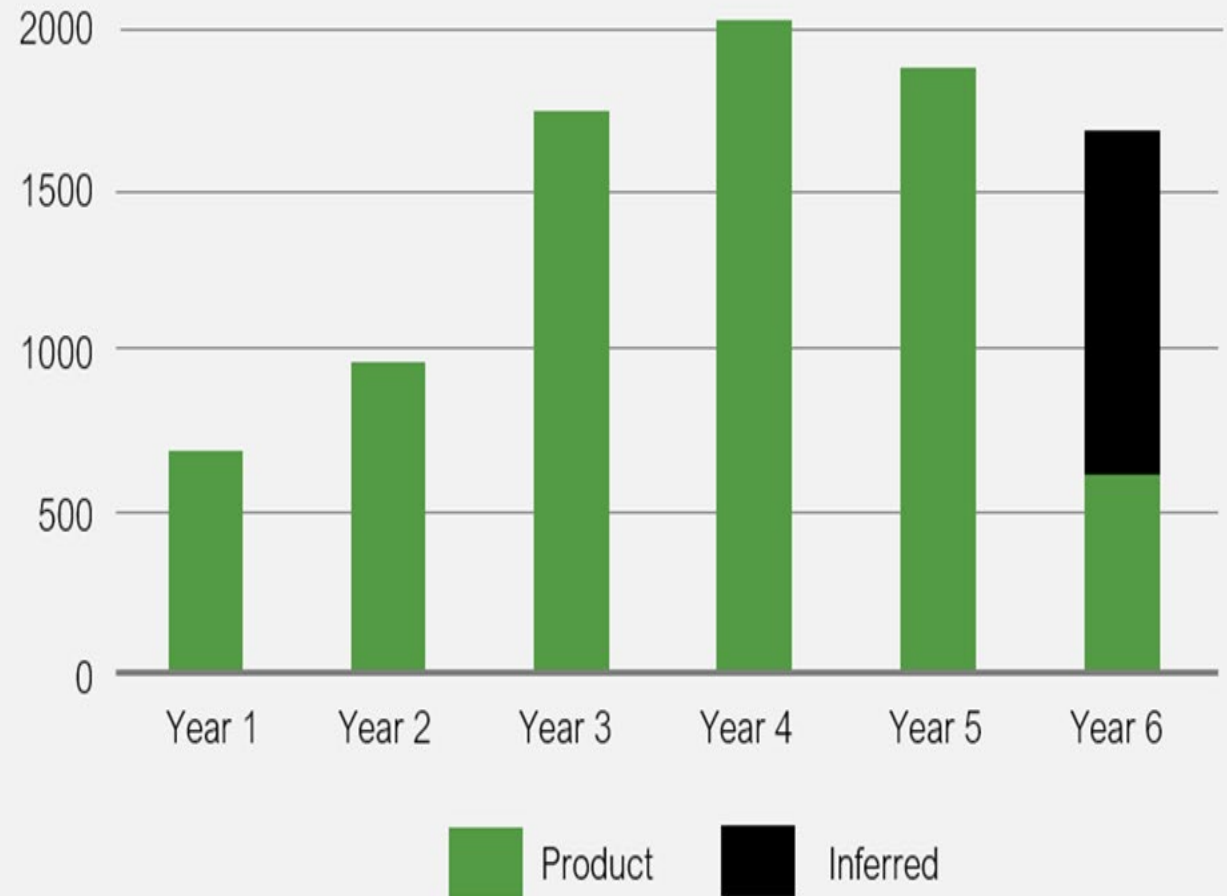
Capital Payback –  
1.8 Years.



PFS production tonnes  
with future expansion  
tonnes from presently  
Inferred tonnes that  
have a high probability  
of conversion to  
Indicated Resource  
tonnes

**+1Mt Product delivers  
additional US\$21M NPV.**

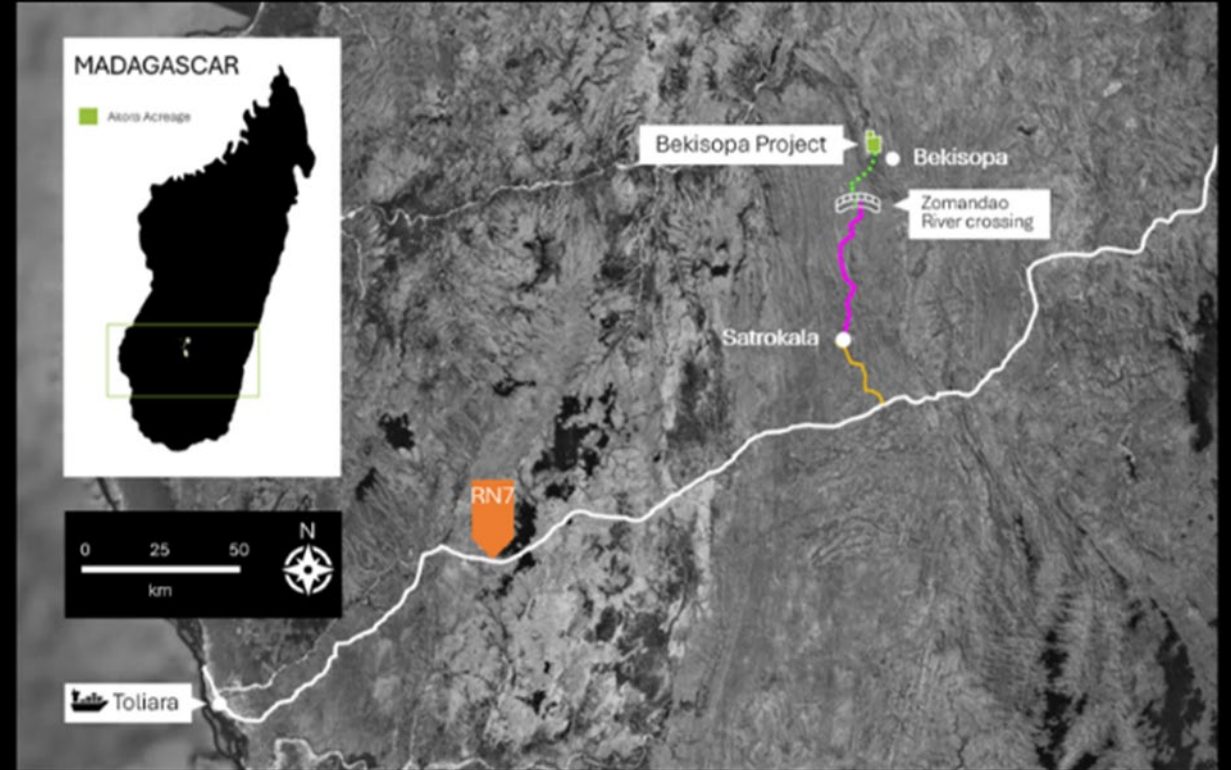
Annual Product Tonnes



# The PFS has identified a suitable haul road pathway of new and existing roads from Bekisopa to the Port of Toliara.

- 25km of new roads from the mine site to the Zomandoa River crossing, followed by 80km of existing road to be upgraded to the township of Satrokala.
- Then a further 25km of existing roadway requires some upgrading which then connects with National Highway RN7.

420km from Bekisopa Project to the Toliara Port.



## Established infrastructure





# New bypass road from RN7 highway to be used to access Toliara Port.



This public road, financed by the World Bank, has been under construction over the last 12 months and is scheduled for completion mid-2026.

The Malagasy Ministry of Public Works has launched a Notice of Expression of Interest for consultancy for **detailed preliminary design studies for the extension and modernisation of the Toliara port**. Financed under the second phase of the Trade Corridor Development and Facilitation Project (PACFC II), with the support of the African Development Bank (AfDB).



# At Toliara Port, a mobile conveyor will load a 10,000wmt transshipping barge.



- The barge will transport the product to the export vessel in deep waters outside the bay of Toliara and be unloaded by the ship's gear.
- As shipments reach 2Mtpa from Year 3, transshipping will utilise two barges, working in parallel, and incorporate a floating crane, moored in deeper water, to facilitate faster loading rates of the export vessels.

Madagascar can easily ship  
to Asian steelmakers as well  
as DRI pellet manufacturers  
around the world.





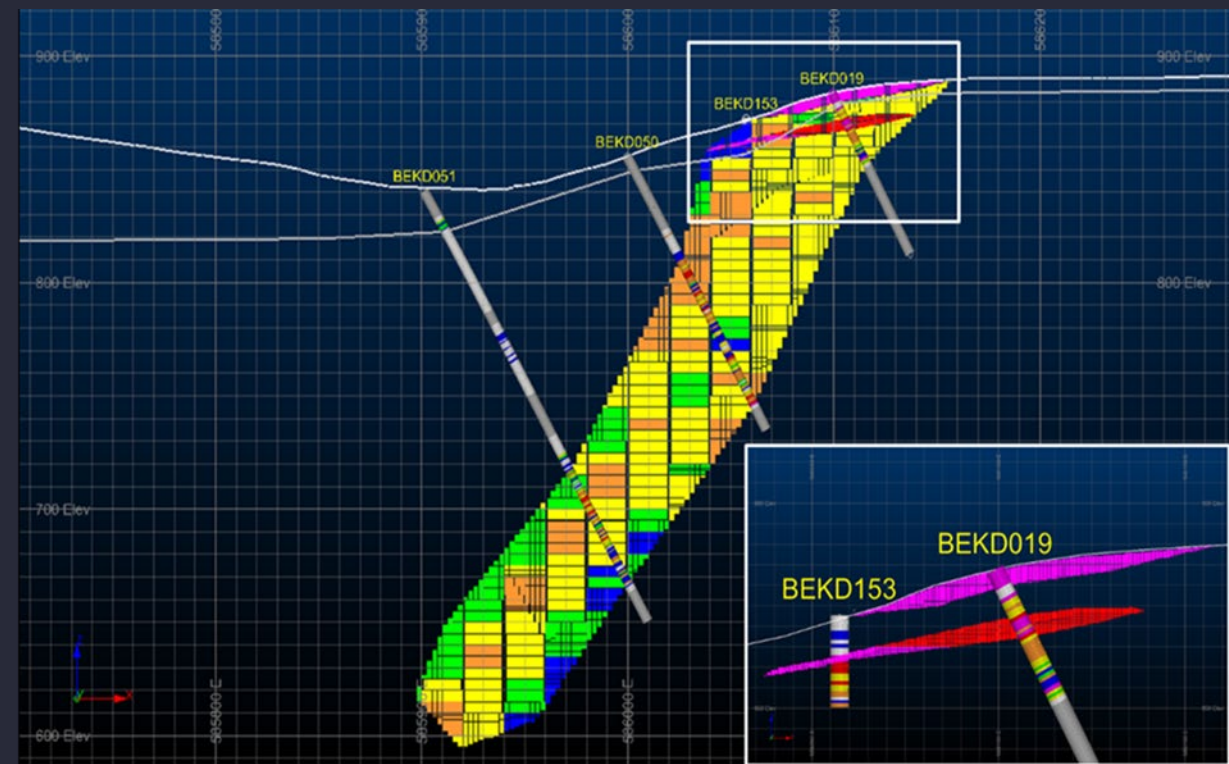
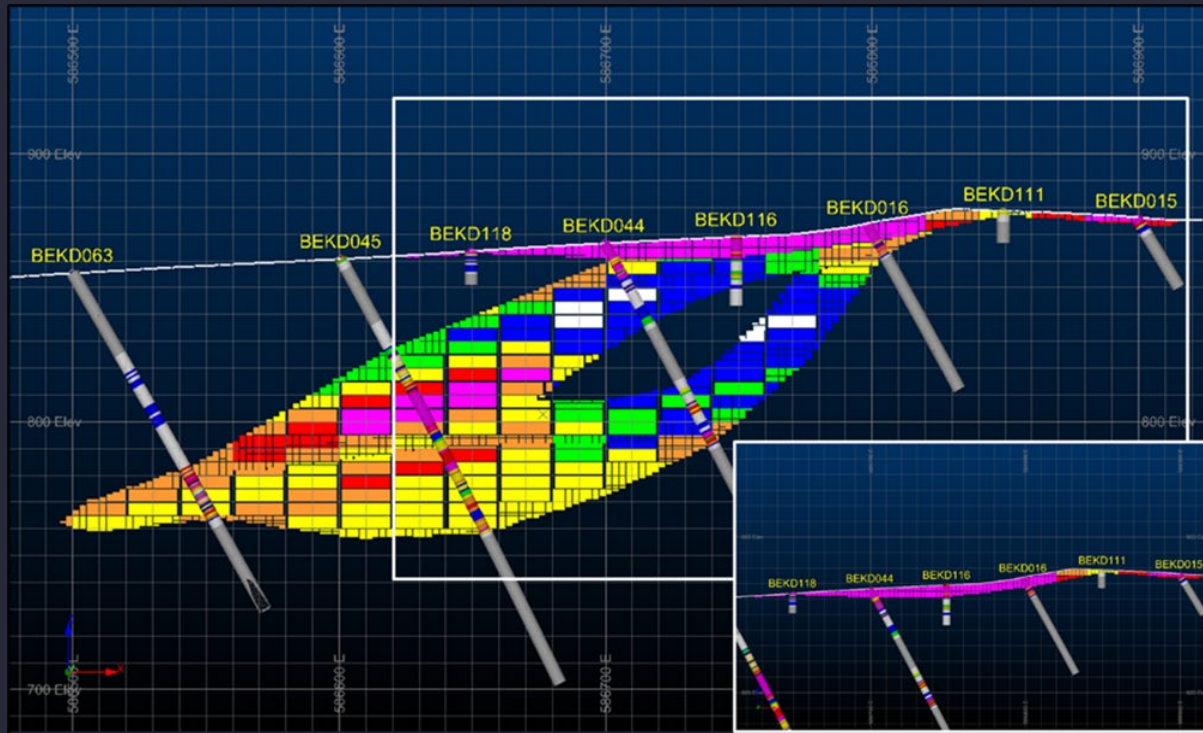
# Pathway to Final Investment Decision in mid-2026 and first shipment in Q3 of 2027.

## Next steps:

- **Permit renewals** and transformation to Mining Licenses, Main Bekisopa tenement first to be renewed under the updated Mining Code.
- Road approvals, land access and port agreements
- ESIA road haulage and port areas
- Early engineering works – haul road and port
- Strategic Investor re-engagement



# Bekisopa's DSO sits above an expansive multi-decade inferred resource\*.





## Stage Two Development

Future production anticipates a very low impurity **premium-priced +68% Fe concentrate** for Direct Reduced Iron-Electric Arc Furnace (DRI-EAF) technology.

---

DRI-EAF technology reduces carbon emissions significantly.





# AKORA's compelling investment case



## DSO Start-Up

Low capex  
High margin,  
Strong cash flow.



## Premium Grade Low Impurity DRI Concentrate

Long mine life  
for decarbonising  
the steel industry



# Contact us

---

**Paul Bibby**

Managing Director

paul.bibby@akoravy.com

---

**AKORA Resources Ltd**

ACN 139 847 555

ASX: AKO

12 Anderson Street West,  
Ballarat  
Victoria 3350.



---

Join the conversation  
@AkoraResources

Follow us  
<https://www.linkedin.com/company/akora-resources/>

Subscribe to our investor  
relations platform  
**InvestorHub:**  
<https://investorhub.akoravy.com/auth/signup>

**AKORA**  
Resources

