



Connected
Minerals Ltd

Unearthing Tomorrow's Energy

Investor Presentation

ASX:CML | FEBRUARY 2025



Disclaimer

This presentation has been prepared by Connected Minerals Limited (“CML”). The information contained in this presentation is a professional opinion only and is given in good faith. Certain information in this document has been derived from third parties and though CML has no reason to believe that it is not accurate, reliable or complete, it has not been independently audited or verified by CML.

Any forward-looking statements included in this document involve subjective judgment and analysis and are subject to uncertainties, risks and contingencies, many of which are outside the control of, and may be unknown to, CML. In particular, they speak only as of the date of this document, they assume the success of CML’s strategies, and they are subject to significant regulatory, business, competitive and economic uncertainties and risks. Actual future events may vary materially from the forward-looking statements and the assumptions on which the forward-looking statements are based. Recipients of this document (Recipients) are cautioned not to place undue reliance on such forward-looking statements. CML makes no representation or warranty as to the accuracy, reliability or completeness of information in this document and does not take responsibility for updating any information or correcting any error or omission which may become apparent after this document has been issued. To the extent permitted by law, CML and its officers, employees, related bodies corporate and agents (Agents) disclaim all liability, direct, indirect or consequential (and whether or not arising out of the negligence, default or lack of care of CML and/or any of its Agents) for any loss or damage suffered by a Recipient or other persons arising out of, or in connection with, any use or reliance on this presentation or information.

This presentation is not an offer, invitation, solicitation or recommendation with respect to the subscription for, purchase or sale of any security, and neither this presentation nor anything in it shall form the basis for any contract or commitment whatsoever.

Competent Persons Statement

The information in this announcement that relates to exploration results is based on and fairly represents information and supporting documentation, and has been reviewed and approved by Mr Herbert Roesener, a competent person who is a member of the South African Council for Natural Scientific Professions (SACNAP), a JORC Recognised Professional Organisation. Mr Roesener is a consultant to Connected Minerals Limited. Mr Roesener has sufficient experience that is relevant to the style of mineralisation and type of deposits under consideration and to the activity being undertaken to qualify as a Competent Person as defined in the 2012 edition of the JORC Code. Mr Roesener has provided his prior written consent as to the form and context in which the exploration results and the supporting information are presented in this announcement.

Corporate Profile



Board of Directors



Adam Sierakowski | Non-Executive Chairman

A lawyer and founder of the firm Palisade Corporate (formerly Price Sierakowski), Adam is the founder and MD of corporate advisory firm, Trident Capital. Mr Sierakowski has held numerous board positions with ASX listed companies for over 20 years including many as chairman.



Warrick Clent | Managing Director

A geologist with over 30 years technical experience in the mining industry, having worked on greenfield through to advanced exploration projects, open cut and underground mines across the commodity spectrum. Warrick's career has seen him manage teams >100 people, manage social licence and heritage responsibilities and compliance reporting for companies operating in multiple countries and jurisdictions including Australia, Papua New Guinea and Indonesia.



Barend Morkel | Non-Executive Director

A Chartered Accountant having qualified with Ernst & Young South Africa, Barend has over 19 years of mining sector experience, gained in various senior positions held with Endeavour Mining group, Glencore, China General Nuclear Power Group, Vale, and Norilsk Nickel. Mr Morkel's mining experience in uranium included his role as a Senior Financial professional with Swakop Uranium during the greenfield project construction & commissioning of the \$2.5 billion Husab Mine, the world's largest Uranium only mine.



Corporate Overview



Corporate Structure

Shares on Issue	55,783,212
Options	12,000,000
Performance rights	5,000,000
Fully diluted share capital	72,783,212
Share price@ 19 Feb 2025	\$0.20
Market Cap @ 19 Feb 2025	\$11.2M
Cash @ 31 Dec 2024	\$4.7m

Shareholder Structure



■ Top 20 ■ Board & Management ■ Other

“

*a uranium
focused junior
mineral
exploration
company*

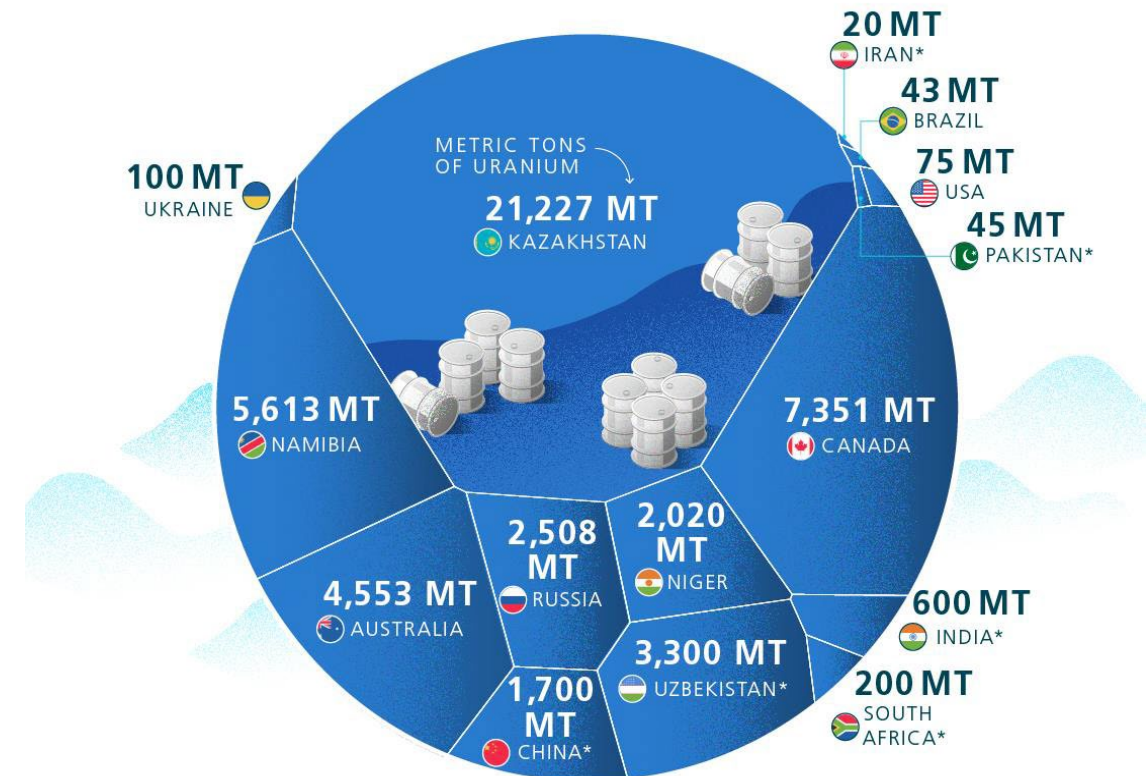
”

Namibia's Uranium Advantage



Advantages

- **Tier one supplier** to global energy utilities with over 45 years of uranium production and exporting history
- **Three substantial uranium mines presently in operation** and multiple development opportunities advancing
- **3rd largest** global producer of uranium in 2023
- Port, rail, power and labour force well established to **support uranium mining**
- **Prolific scale** of uranium endowment



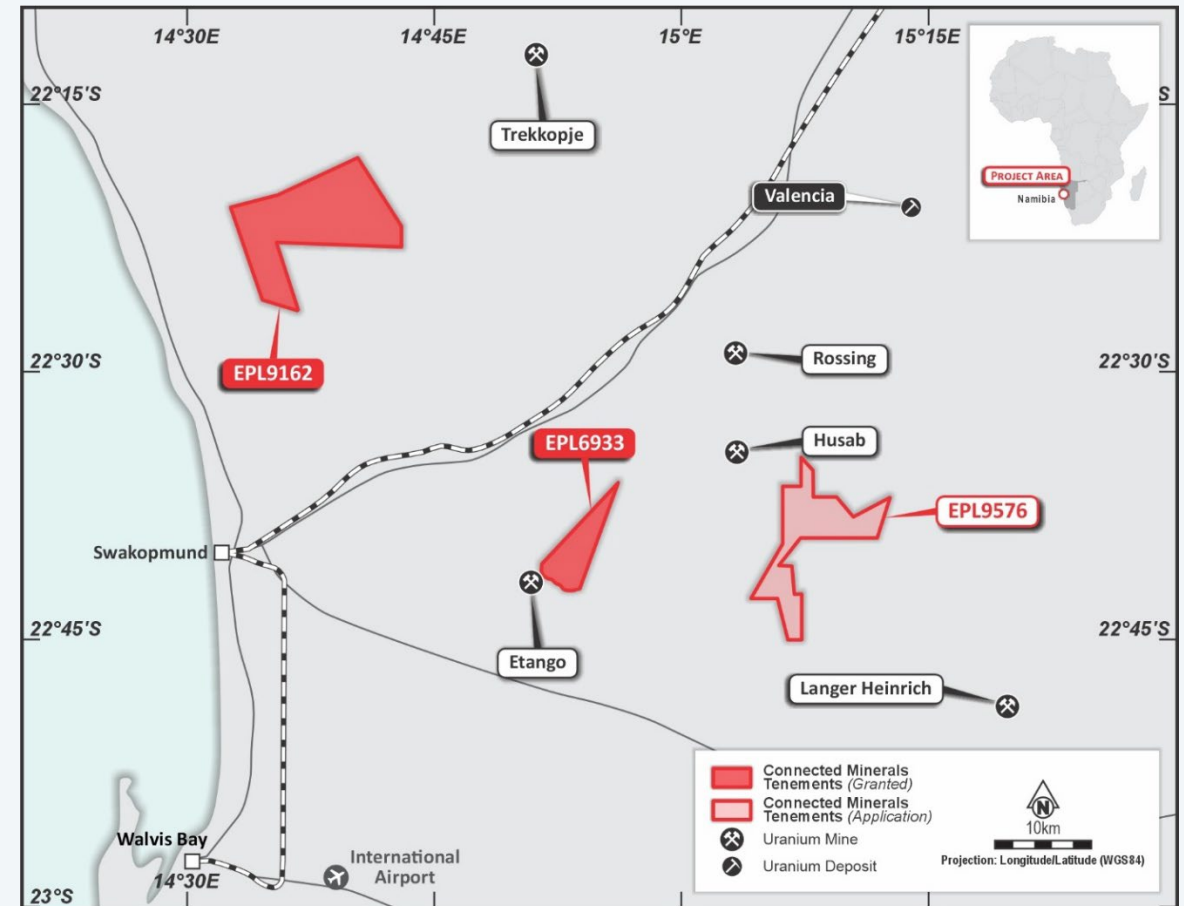
*Estimated.
SOURCE: World Nuclear Association, August 2023.

Uranium Production by Country

Namibian Portfolio



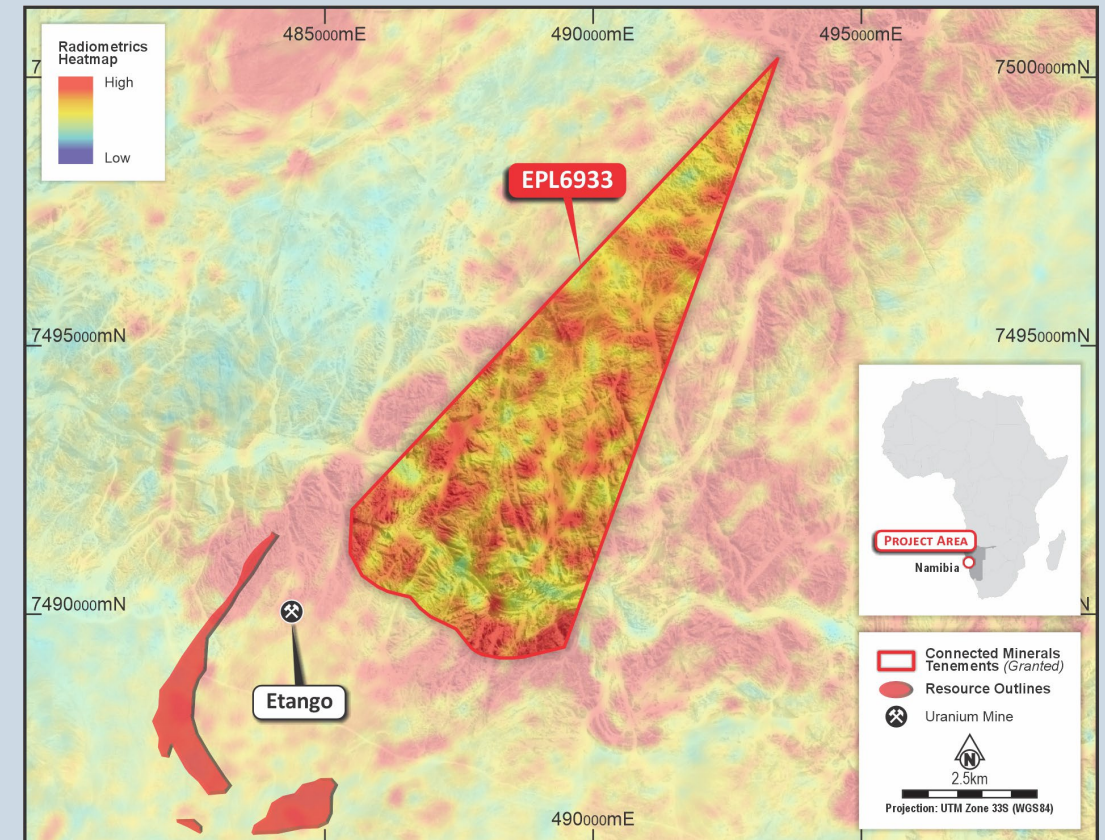
- Strategic land position in Namibia's most prolific uranium producing region comprising:
 - 2 granted exclusive prospecting licence (Etango North-East & Swakopmund)
 - 1 EPL applications (Rossing South)
- Entire portfolio lies in close proximity to known Uranium mines/deposits including:
 - Rossing¹ (246Mt @ 250ppm U₃O₈)
 - Husab² (241Mt @ 480ppm U₃O₈)
 - Etango³ (416Mt @ 225ppm U₃O₈ - A\$534.4M Market Cap)
 - Langer Heinrich⁵ (140.1Mt @ 415ppm U₃O₈ - A\$3.4B Market Cap)
- Portfolio benefits from excellent infrastructure from established projects above including:
 - Water - Rossing reservoir
 - Power - 220kV line (national grid power)
 - Road - Trans-Kalahari (B2) highway
 - Airport - Walvis Bay International Airport



Etango North-East Project



- Granted EPL 6933 located in the western part of Namibia covering 30km²
- Proximate to advanced projects including:
 - Active Mining Licence (ML 250) held by Bannerman Mining Resource Namibia (Pty) Ltd currently under development
 - (416Mt @ 225ppm U₃O₈ – BMN: A\$534.4M Market Cap)
 - EPL 3138 held by Swakop Uranium (Pty) Ltd which borders Etango North-East on the south-western part
 - (241Mt @ 480ppm U₃O₈)
- Infrastructure, electricity, communication and water supply accessible



Maiden Exploration Success



Maiden Programme Confirms High Grade Mineralisation

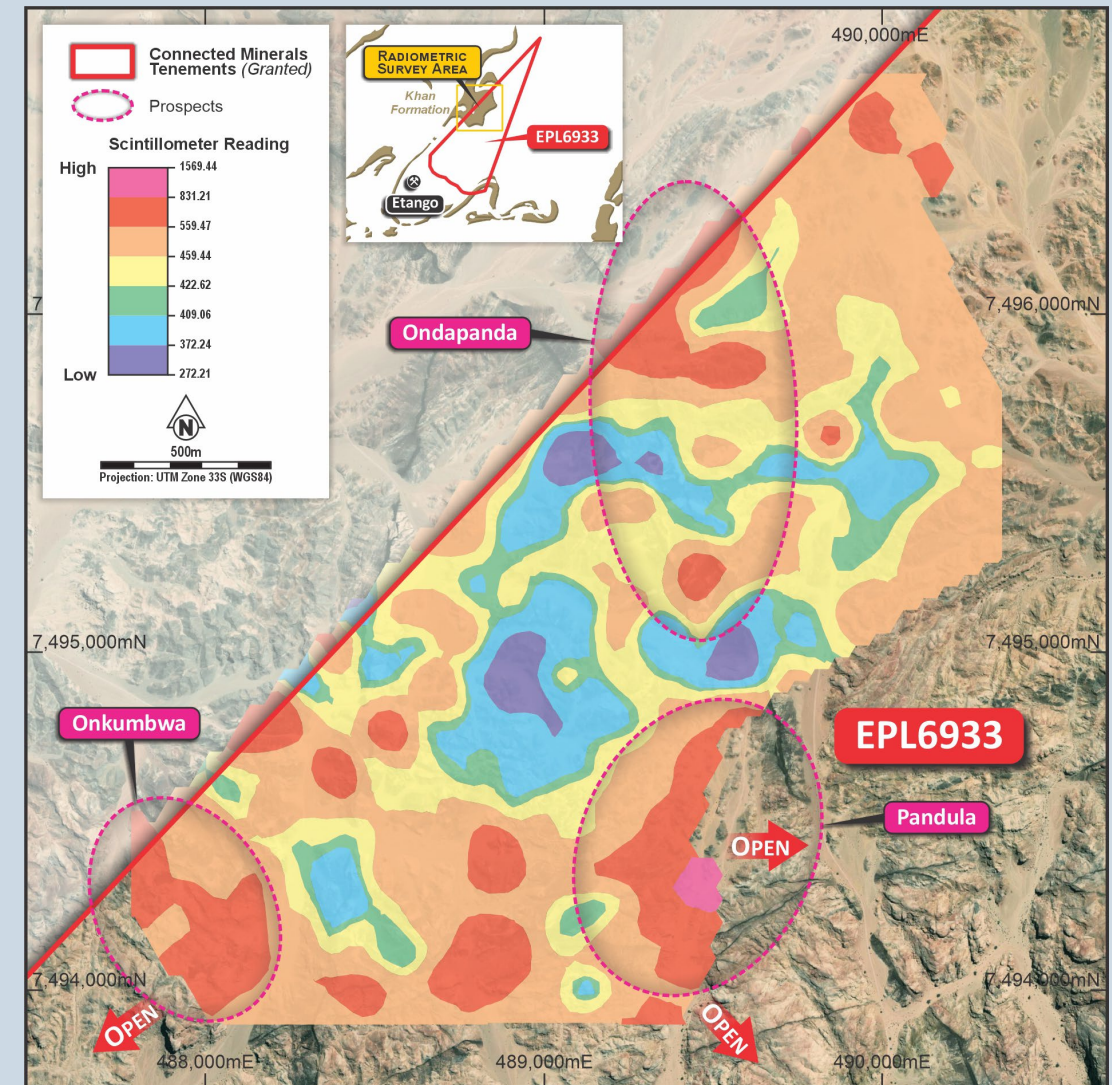
- Initial field programme covered an area of 1km x 2.5km zone along strike and within the same rock units as Bannerman Energy's (ASX: BMN) world-class Etango Uranium Project
- Initial rock chip results (132 samples for 139 metres) confirm high grade U_3O_8 mineralisation
- Significant rock chip results include⁶:
 - 5,413 ppm U_3O_8
 - 4,847 ppm U_3O_8
 - 2,086 ppm U_3O_8
 - 2,084 ppm U_3O_8
 - 1,620 ppm U_3O_8
 - 1,448 ppm U_3O_8
 - 1,100 ppm U_3O_8
 - 947 ppm U_3O_8
 - 682 ppm U_3O_8



Key Prospects Identified



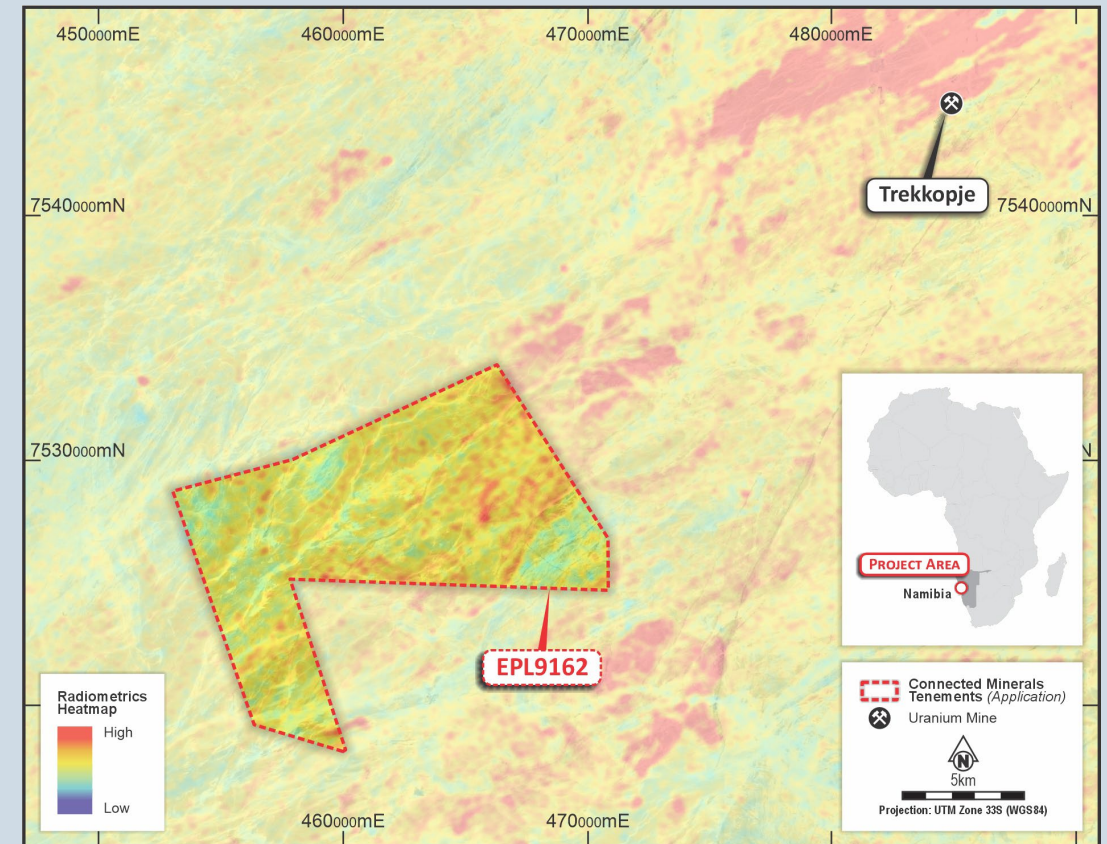
- Detailed scintillometer survey highlighted three key areas of interest:
 - **Ondapanda Prospect** – over the current high-grade mineralisation and extending to the north, measuring 1,000 metres by 500 metres
 - **Onkumbwa Prospect**, in the south-west
 - **Pandula Prospect**, in south-east
- Onkumbwa & Pandula Prospects are located on the edges of the survey and both demonstrate similar characteristics to Ondapanda
- Further work is planned to explore potential extensions to these zones
- High priority drill targets identified for upcoming maiden drilling programme in Q1



Swakopmund Project



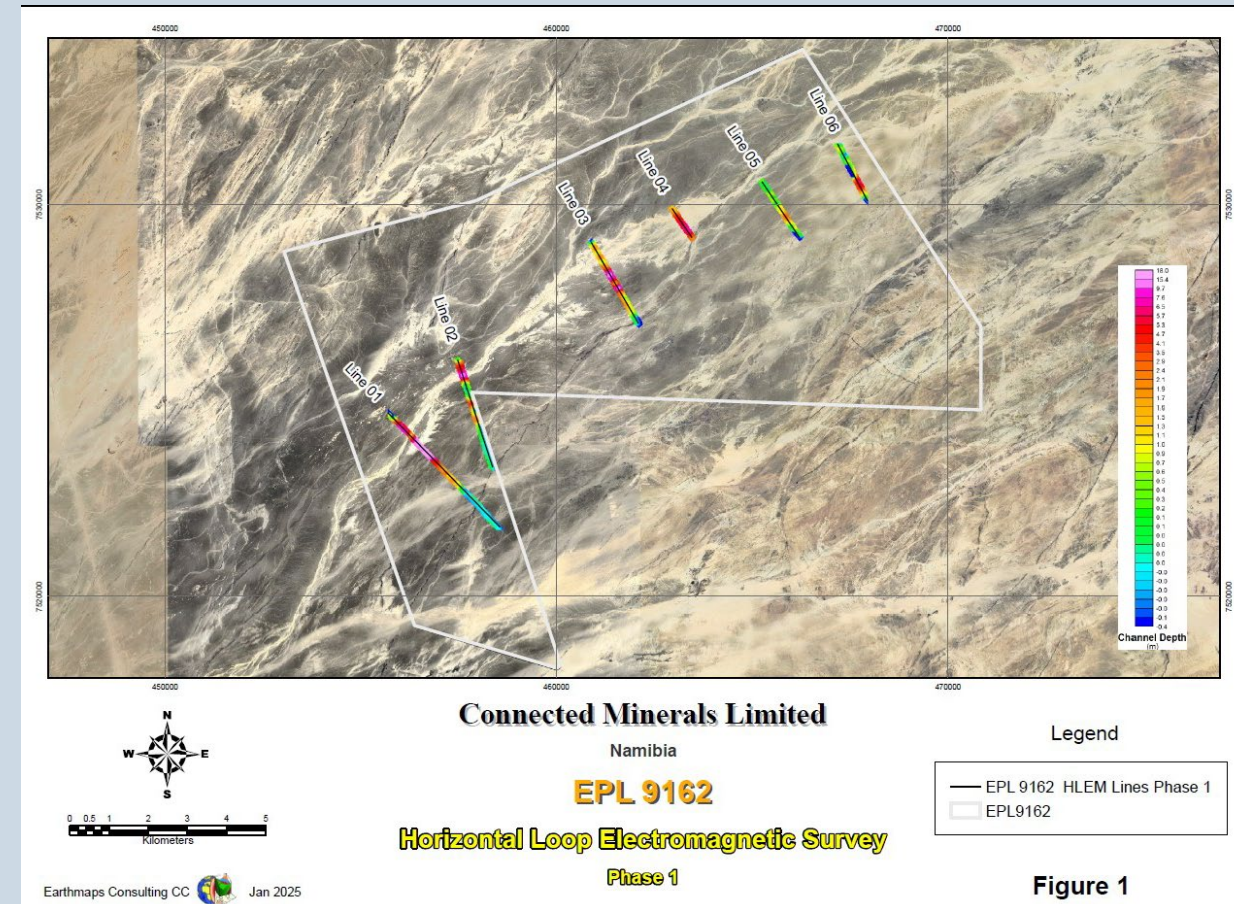
- Granted EPL 9162 covering 125km²
- Proximate to Orano's Trekkopje and Klein Trekkopje deposits
 - (340Mt @ 140ppm U₃O₈)⁵
- Potential for calcrete hosted uranium deposits within channels running off nearby "hot" granites
- Prospective targets located in the central and south-eastern areas of the licence
- Swakopmund demonstrates the potential for low grade, high tonnage uranium deposit



Priority Targets Confirmed



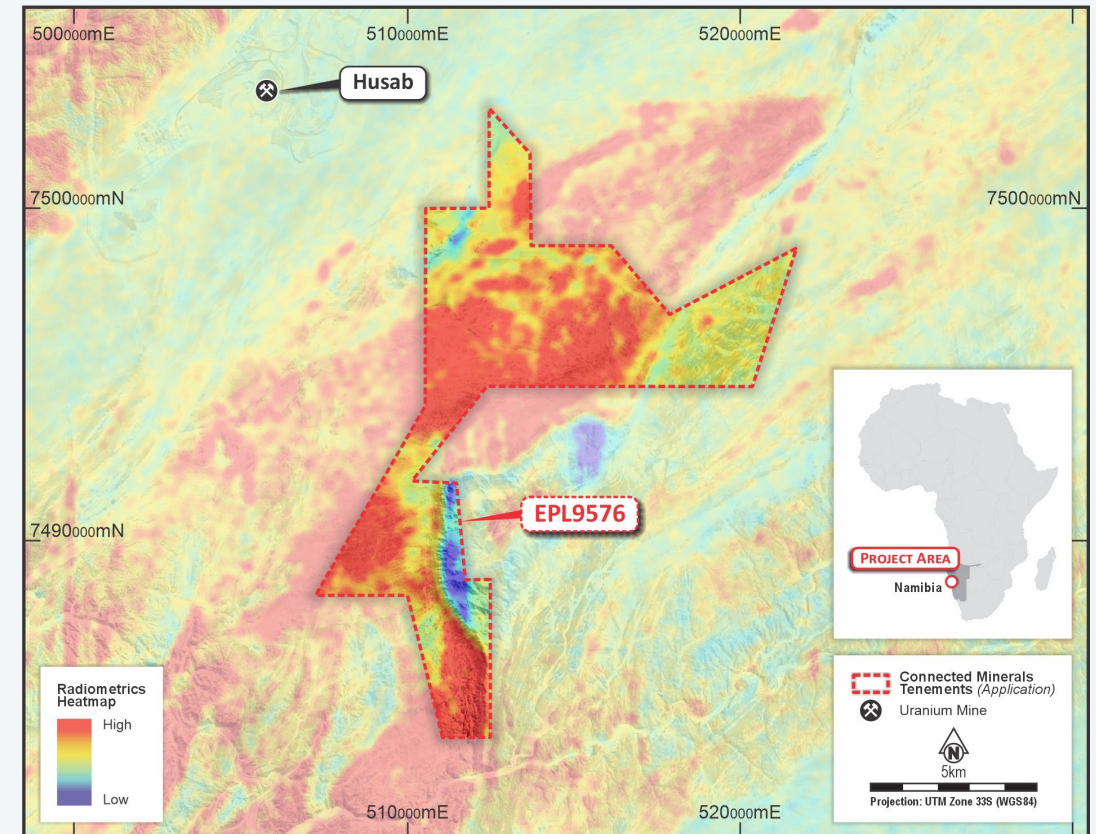
- Horizontal-loop electromagnetic (“HLEM”) survey delivers significant results
- Survey aimed to delineate paleochannels, with potential calcrete hosted uranium mineralisation, in the central and eastern areas of the licence
- Potential paleochannels confirmed, particularly along four of the lines completed
 - Line 1 returned deepest and widest paleochannel response with a width of 600m and maximum depth of ± 18 m
- Priority targets confirmed for an upcoming initial drilling programme expected to commence in Q2 2025



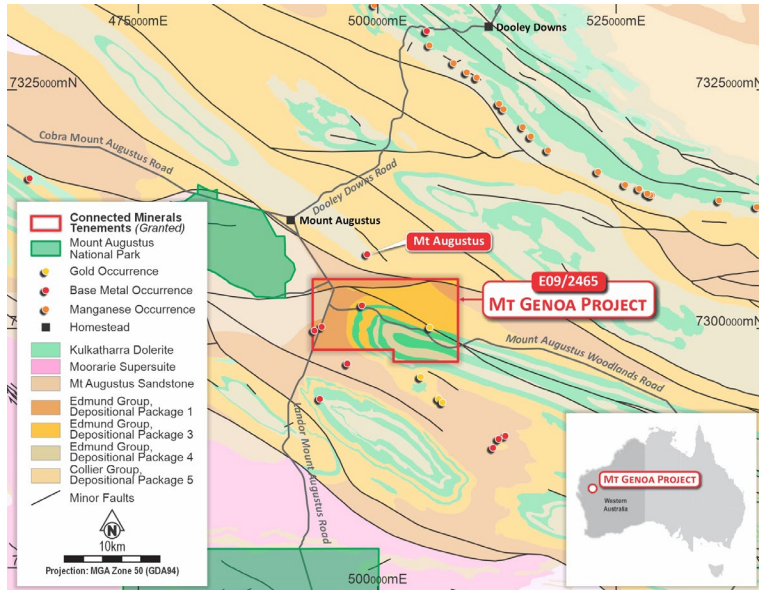
Rossing South Project



- EPL 9576 covering 69km² (Application, intention to grant EPL issued, ECC expected within 2-4 months)
- Primary target is an alaskite mineralisation within a secondary target of calcrete hosted uranium, located 6km east of Husab Uranium Mine
- Rossing South display characteristics that are suitable for both primary and secondary uranium mineralisation
- Potential for alaskite granitic dykes within the "hot" granite seen in the Uranium radiometric
- A number of structural contacts have been identified as priority target areas for primary uranium mineralisation

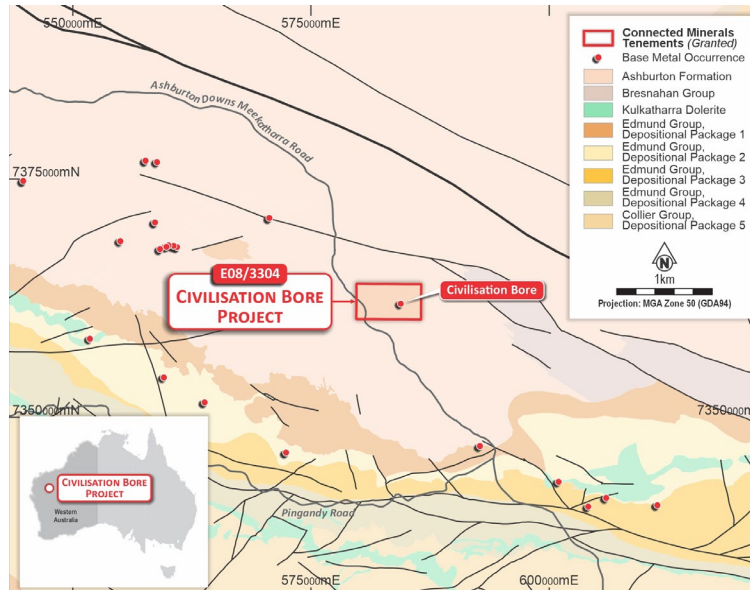


WA Overview – Maiden Exploration Commenced



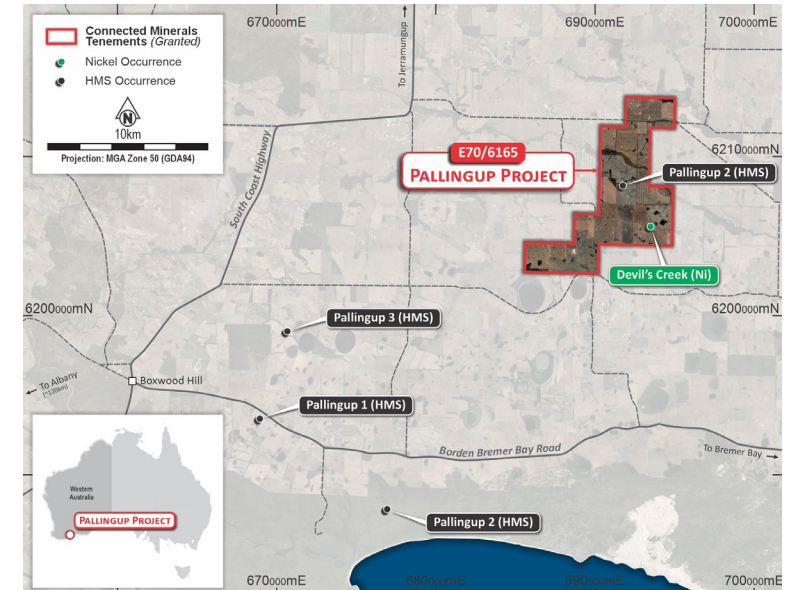
Mt Genoa Project

- ~125.1km² prospective for lead, copper and silver
- Located between the Archean Yilgarn and Pilbara cratons



Civilisation Bore

- ~25.13km² prospective for copper, gold and silver
- Two styles of iron mineralisation have been observed



Pallingup Project

- ~51km² prospective for heavy minerals and REE



The Future Looks Bright

- Namibian uranium exploration play with a strategic land position in close proximity to significant uranium mines/deposits
 - In Country team with 60 years combined experience including non-executive director Rennie Morkel who assisted in the greenfield project construction and commissioning of the \$2.5 billion Husab Mine, the world's largest Uranium only mine
 - Maiden exploration success at Etango North-East & Swakopmund identified priority targets for maiden drilling H1 2025
- Namibia
 - Tier One, minerals-rich country with a well-established history of uranium production
 - The portfolio benefits from excellent infrastructure from established mining projects

References



- ¹ Source: 2010 Rossing Mineral Resources from <https://www.riotinto.com/en/invest/reports/annual-report>, Rossing Mine operated by Rossing Uranium, now majority owned by CNNC
- ² Source: [PorterGeo Database - https://portergeo.com.au/database/mineinfo.asp?mineid=mn1609](https://portergeo.com.au/database/mineinfo.asp?mineid=mn1609) referenced 31/07/2024, Husab Mine is owned by Swakop Uranium Namibia (a subsidiary of CGN)
- ³ Source: https://bannermanenergy.com/wp-content/uploads/2024/06/240626_-Investor-Presentation_June-CBE.pdf, market capitalisation BNM:AX Yahoo Finance 31/7/24
- ⁴ Source: <https://www.paladinenergy.com.au/wp-content/uploads/2023/10/Mineral-Resources-and-Ore-Reserves-Langer-Heinrich-as-at-June-2023.pdf>, market capitalisation PDN:AX Yahoo Finance 31/7/24
- ⁵ Source: Mining Technology website referenced 31/07/2024 quoting undated/unconfirmed reserves - <https://www.mining-technology.com/projects/trekkopje-mine/?cf-view>
- ⁶ CML ASX Announcements 18th November 2024 “[*High Grade Uranium Mineralisation Confirmed in Maiden Sampling Programme at Etango North-East Project, Namibia*](#)” and 5th February 2025 “[*Exceptional Results at Etango North-East Extends High Grade Uranium Mineralisation*](#)”



Contact Us

Warrick Clent
Managing Director

E info@connectedminerals.com.au



Connected
Minerals Ltd

ASX:CML