

Expedited Tolmer Soil Sampling Tests ~1.9km² Footprint Following expanded 2,882m RC drilling program (results pending)

HIGHLIGHTS

- Tolmer high-grade silver discovery: expedited soil geochemistry program completed over ~1.9km² area surrounding recently expanded reverse circulation (RC) drilling program¹

Barton Gold Holdings Limited (ASX:BGD, FRA:BGD3, OTCQB:BGDFF) (**Barton** or **Company**) is pleased to confirm that an expedited soil sampling program has been completed over a ~1.9km² area surrounding the new 'Tolmer' high grade silver discovery at the Company's South Australian Tarcoola Gold Project (**Tarcoola**). ~380 samples have been collected with assay results expected during September 2025.¹

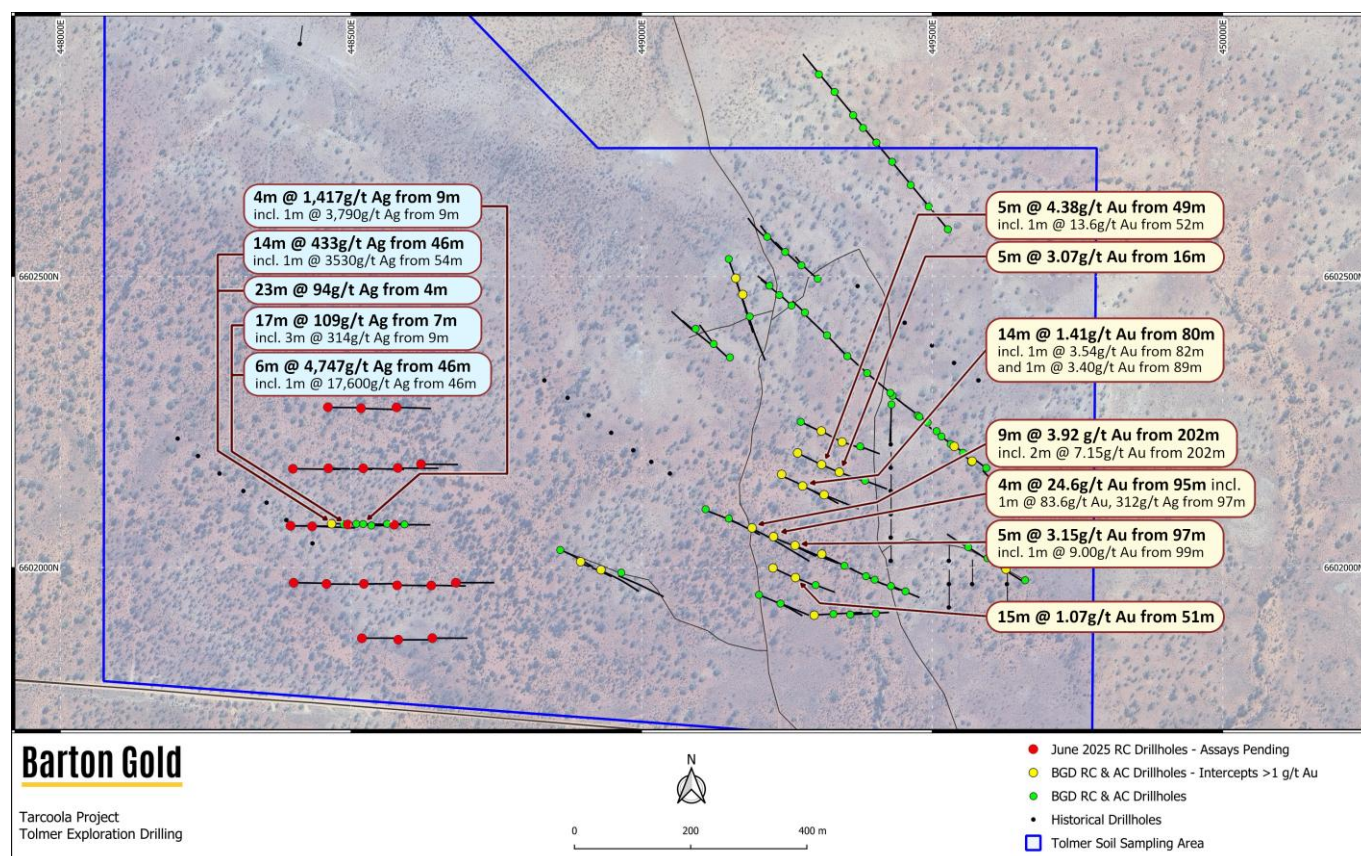


Figure 1 – Location of Tolmer soil geochemistry program relative to recent RC drilling program¹

Commenting on the geochemical program, Barton Managing Director Alexander Scanlon said:

"We recently expanded our Tolmer 'silver zone' drilling by ~50% to cover a ~400 metre by ~250 metre area based, in part, upon further geological surface reconnaissance. This program extends that reconnaissance to a broader area of ~1,700 metres by ~1,100 metres to see if we can potentially identify a larger mineralised footprint."

¹ Refer to ASX announcements dated 10 and 16 June 2025

Program background

Barton identified Tolmer as a high-grade gold discovery in August 2024, and subsequently identified a new 'silver zone' ~500m west in a line of seven discovery holes with globally significant assays including **6m @ 4,747 g/t Ag from 46m, 14m @ 434 g/t Ag from 46m and 4m @ 1,417 g/t Ag from 9m.**²

2,882m RC drilling was completed during June 2025 to test extensions of mineralisation in all directions, with the current geochemical sampling intended to potentially map a broader surface footprint.³

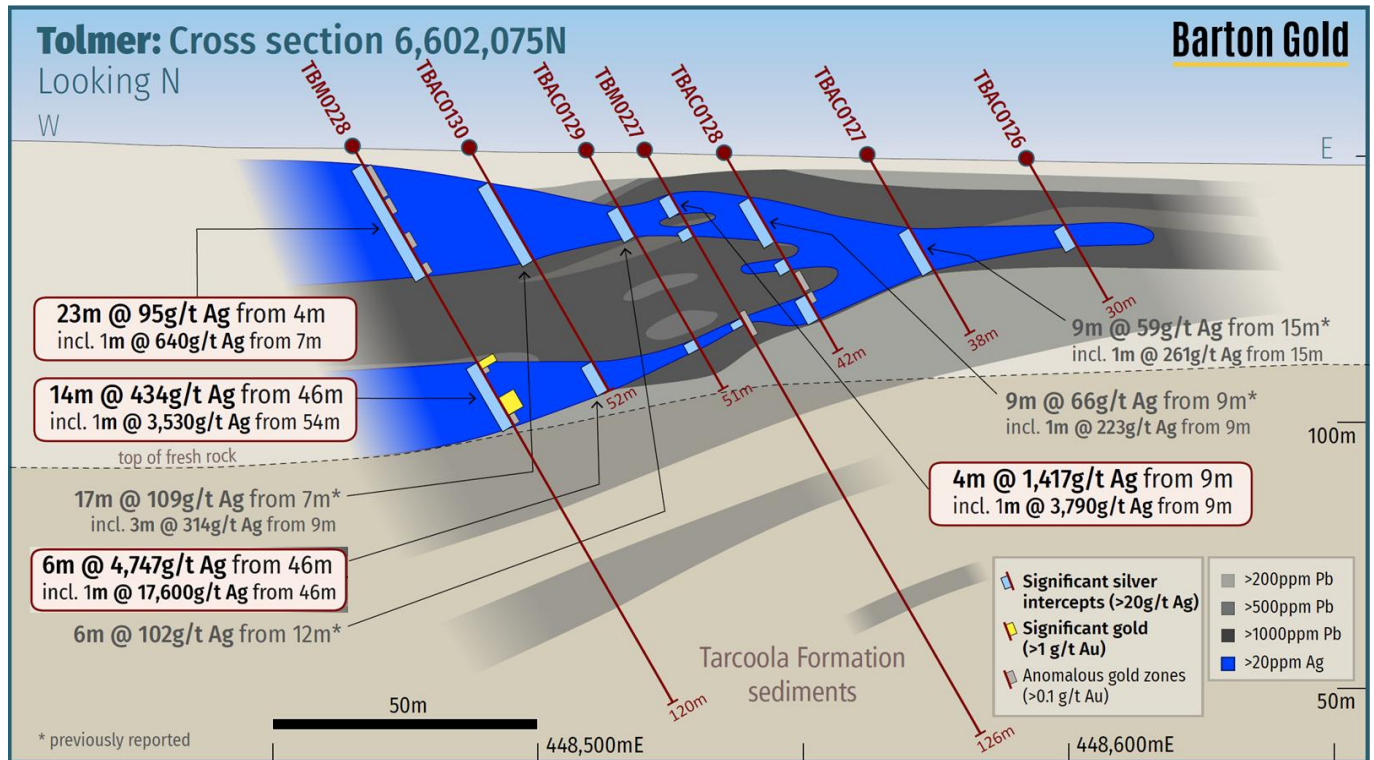


Figure 2 – Tolmer 'silver zone' cross-section (ref Fig. 3) with anomalous Ag-Pb and key intersections²

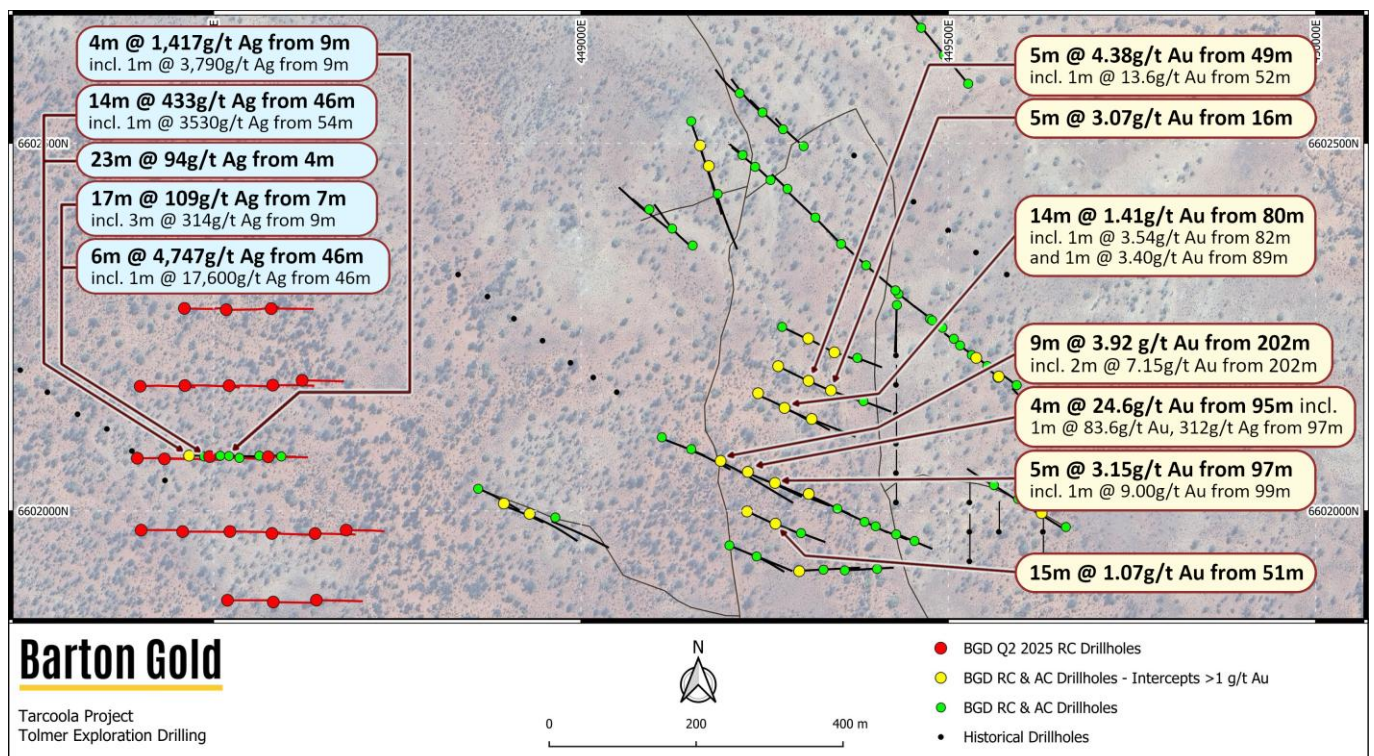


Figure 3 – Tolmer 'western silver' zone June 2025 drilling program (red hole collars and traces)³

² Refer to ASX announcements dated 27 August 2024 and 30 January, 6 February, 27 March, 16 April, 22 May, 10 and 16 June 2025

³ Refer to ASX announcement dated 16 June 2025

Authorised by the Managing Director of Barton Gold Holdings Limited.

For further information, please contact:

Alexander Scanlon
Managing Director

a.scanlon@bartongold.com.au

+61 425 226 649

Jade Cook

Company Secretary

cosec@bartongold.com.au

+61 8 9322 1587

About Barton Gold

Barton Gold is an ASX, OTCQB and Frankfurt Stock Exchange listed Australian gold developer targeting future gold production of 150,000ozpa with **1.9Moz Au & 3.1Moz Ag JORC Mineral Resources** (73.0Mt @ 0.79 g/t Au), brownfield mines, **and 100% ownership of the region's only gold mill** in the renowned Gawler Craton of South Australia.*

Challenger Gold Project

- 223koz Au JORC Mineral Resources
- Region's only gold processing plant (650ktpa CIP)

Tarcoola Gold Project

- Fully permitted open pit mine with ~20koz Au within trucking distance of Barton's Central Gawler Mill
- Historical goldfield with new high-grade gold-silver discovery in grades up to 83.6 g/t Au and 17,600 g/t Ag

Tunkillia Gold Project

- 1.6Moz Au & 3.1Moz Ag JORC Mineral Resources
- Optimised Scoping Study for competitive ~120kozpa gold and ~250kozpa silver bulk open pit operation



Competent Persons Statement & Previously Reported Information

The information in this announcement that relates to the historic Exploration Results and Mineral Resources as listed in the table below is based on, and fairly represents, information and supporting documentation prepared by the Competent Person whose name appears in the same row, who is an employee of or independent consultant to the Company and is a Member or Fellow of the Australasian Institute of Mining and Metallurgy (**AusIMM**), Australian Institute of Geoscientists (**AIG**) or a Recognised Professional Organisation (RPO). Each person named in the table below has sufficient experience which is relevant to the style of mineralisation and types of deposits under consideration and to the activity which he has undertaken to qualify as a Competent Person as defined in the JORC Code 2012 (**JORC**).

Activity	Competent Person	Membership	Status
Tarcoola Mineral Resource (Stockpiles)	Dr Andrew Fowler (Consultant)	AusIMM	Member
Tarcoola Mineral Resource (Perseverance Mine)	Mr Ian Taylor (Consultant)	AusIMM	Fellow
Tarcoola Exploration Results (until 15 Nov 2021)	Mr Colin Skidmore (Consultant)	AIG	Member
Tarcoola Exploration Results (after 15 Nov 2021)	Mr Marc Twining (Employee)	AusIMM	Member
Tunkillia Exploration Results (until 15 Nov 2021)	Mr Colin Skidmore (Consultant)	AIG	Member
Tunkillia Exploration Results (after 15 Nov 2021)	Mr Marc Twining (Employee)	AusIMM	Member
Tunkillia Mineral Resource	Mr Ian Taylor (Consultant)	AusIMM	Fellow
Challenger Mineral Resource	Mr Ian Taylor (Consultant)	AusIMM	Fellow

The information relating to historic Exploration Results and Mineral Resources in this announcement is extracted from the Company's Prospectus dated 14 May 2021 or as otherwise noted in this announcement, available from the Company's website at www.bartongold.com.au or on the ASX website www.asx.com.au. The Company confirms that it is not aware of any new information or data that materially affects the Exploration Results and Mineral Resource information included in previous announcements and, in the case of estimates of Mineral Resources, that all material assumptions and technical parameters underpinning the estimates, and any production targets and forecast financial information derived from the production targets, continue to apply and have not materially changed. The Company confirms that the form and context in which the applicable Competent Persons' findings are presented have not been materially modified from the previous announcements.

Cautionary Statement Regarding Forward-Looking Information

This document may contain forward-looking statements. Forward-looking statements are often, but not always, identified by the use of words such as "seek", "anticipate", "believe", "plan", "expect", "target" and "intend" and statements than an event or result "may", "will", "should", "would", "could", or "might" occur or be achieved and other similar expressions. Forward-looking information is subject to business, legal and economic risks and uncertainties and other factors that could cause actual results to differ materially from those contained in forward-looking statements. Such factors include, among other things, risks relating to property interests, the global economic climate, commodity prices, sovereign and legal risks, and environmental risks. Forward-looking statements are based upon estimates and opinions at the date the statements are made. Barton undertakes no obligation to update these forward-looking statements for events or circumstances that occur subsequent to such dates or to update or keep current any of the information contained herein. Any estimates or projections as to events that may occur in the future (including projections of revenue, expense, net income and performance) are based upon the best judgment of Barton from information available as of the date of this document. There is no guarantee that any of these estimates or projections will be achieved. Actual results will vary from the projections and such variations may be material. Nothing contained herein is, or shall be relied upon as, a promise or representation as to the past or future. Any reliance placed by the reader on this document, or on any forward-looking statement contained in or referred to in this document will be solely at the readers own risk, and readers are cautioned not to place undue reliance on forward-looking statements due to the inherent uncertainty thereof.

* Refer to Barton Prospectus dated 14 May 2021 and ASX announcement dated 30 June 2025. Total Barton JORC (2012) Mineral Resources include 1,031koz Au (39.3Mt @ 0.82 g/t Au) in Indicated category and 834koz Au (33.8Mt @ 0.77 g/t Au) in Inferred category, and 3,070koz Ag (34.5Mt @ 2.80 g/t Ag) in Inferred category as a subset of Tunkillia gold JORC (2012) Mineral Resources.