



Norton Gold Fields Ltd ("Norton" or the "Company") provides an update on exploration activities, reflecting its exploration strategy to better exploit the potential of the Company's extensive landholdings around Kalgoorlie.

HIGHLIGHTS

- Resource Development programs during the June 2014 quarter included a total of 18,090m in 131 drill holes comprising reverse circulation (RC), surface and underground diamond core drill holes. Expenditure for the period was \$2.60M
- Surface drilling programs were completed at the Fort Scott and Wattlebird Prospects, and commenced at the Racetrack Prospect. Underground drilling programs were conducted at Homestead Mine (Black Flag West and VN01) and the Bullant Mine.
- Underground diamond drilling programs at the Homestead Mine have targeted down-dip extensions of the Black Flag West Vein and local infill of the VN01 Vein. Significant high grade intercepts (down-hole intervals) include :

Black Flag West	
HUD1010	4m @ 56.7g/t Au from 27.4m
HUD1029	2.35m @ 28.0g/t Au from 52.05m
HUD1033	3m @ 33.8g/t Au from 57.6m

Homestead VN01	
HUD1046	5.2m @ 40.9g/t Au from 36.3m
HUD1050	3.25m @ 164g/t Au from 28.3m
HUD1051	5.1m @ 40.2g/t Au from 30.5m

- At the Bullant Underground Mine, diamond drilling of the northern extension of the East Lode has returned positive results including down-hole intervals of :

BUGD1009	12.7m @ 11.2g/t Au from 54.3m
BUGD1010	10m @ 8.91g/t Au from 81m
BUGD1015	6.5m @ 11.4g/t Au from 123.5m

- Resource definition infill RC drilling has been completed at the Wattlebird Prospect (Carbine-Bullant Project) targeting mineralisation amenable to open cut mining.

About Norton

Norton Gold Fields Limited (ASX:NGF) is an established mid-tier gold producer. In CY2013, Norton produced approximately 172,739 ounces of gold from its open cut and underground operations at Paddington, near Kalgoorlie in Western Australia. The Company holds extensive granted mining and exploration leases in the pre-eminent Kalgoorlie goldfields, with a land package of 710km². Norton's Vision is to be a leading long term gold producer and to achieve this has adopted a business model that seeks to attain sustainable and increased production within a strict cost control environment.

Significant down-hole results from the program include :

PCZC0124	16m @ 4.38g/t Au from 56m
PCZC0132	34m @ 3.52g/t Au from 86m
PCZC0145	7m @ 6.61g/t Au from 132m

- An infill, resource definition RC drilling program has also been completed at the Fort Scott Prospect, Binduli Project aimed at delineating both supergene and deeper primary mineralisation. Significant down-hole results include :

PJIC281	6m @ 29.1g/t Au from 138m
PJIC299	10m @ 11.9g/t Au from 157m
PJIC302	9m @ 6.16g/t Au from 216m

- Resource definition RC and diamond drilling programs have commenced at the Racetrack Deposit (see Figure 1). Racetrack has a significant refractory mineral resource and is the cornerstone of the Company's strategic program to develop a refractory processing stream.

Resource Development & Exploration

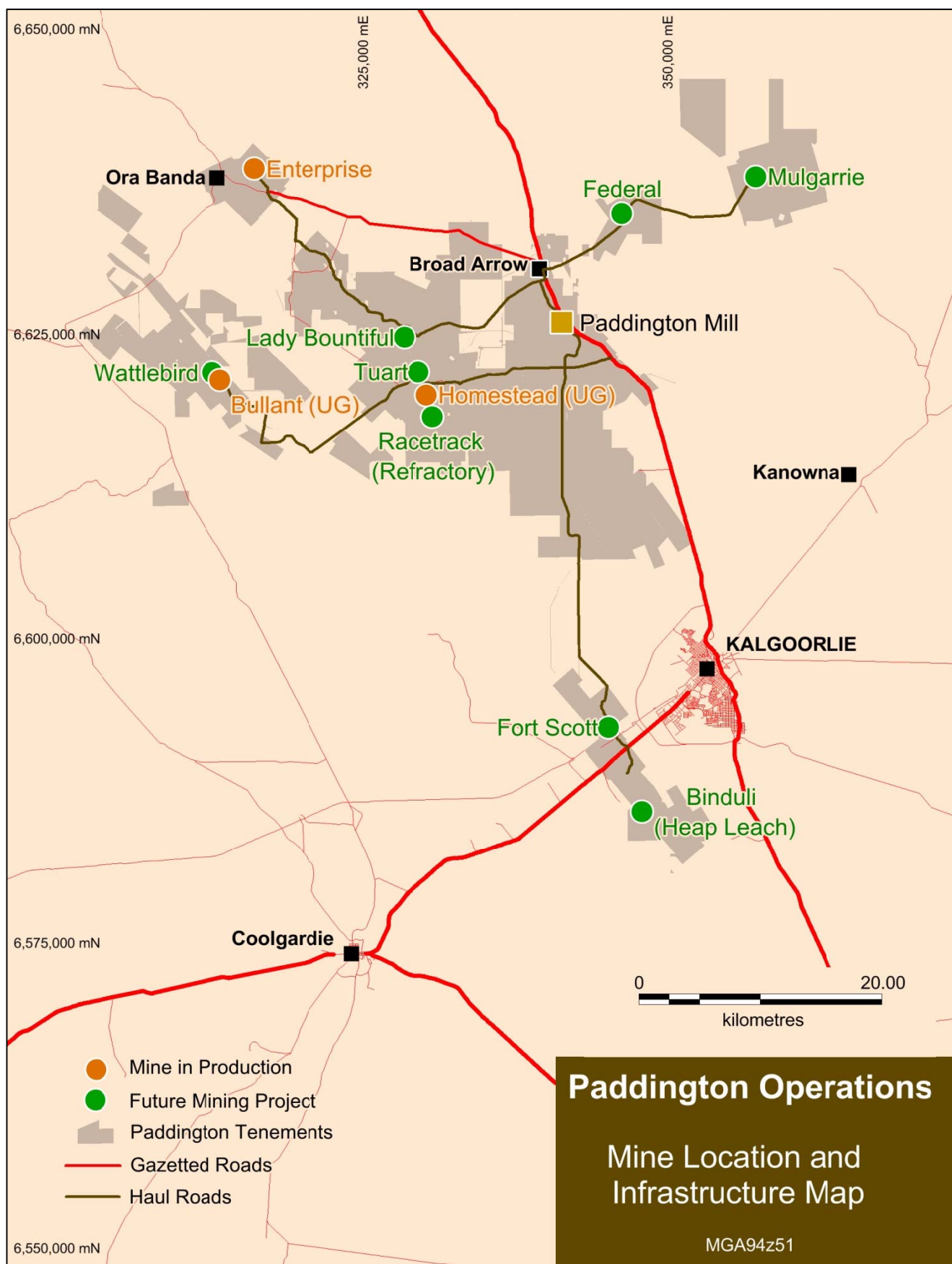
Norton's Paddington tenement package covers a highly prospective area of 710 square kilometres within the Kalgoorlie Goldfields region (Figure 2). Paddington projects currently contain a publicly reported Measured, Indicated and Inferred Mineral Resource inventory of 6.94Moz of gold, including a Proven and Probable Ore Reserve of 1.07Moz of gold (see ASX announcement dated 24 January 2014). The 3.3Mt per annum Paddington processing plant is centrally located within the tenement package. Norton is not aware of any new information or data that materially affects the information included in the ASX announcement made 24 January 2014 and confirms that all material assumptions and technical parameters underpinning the estimates in the said announcement continue to apply and have not materially changed.

Open cut ore mining is in progress at the Enterprise Deposit (Ora Banda Project) where the bulk of mill feed ore is being sourced, supplemented by ore stockpiles from satellite open cut operations. Underground mining is in progress at the Homestead Underground Mine (Mount Pleasant Project), which includes the Black Flag West Vein, and at the Bullant Underground Mine (Carbine-Bullant Project).

*Figure 1:
RC and diamond
drilling at the
Racetrack Prospect*



Figure 2: Paddington Tenement Package & Projects



Drilling programs during the June 2014 quarter totalled 18,090m from 131 drill holes, comprising 10,612m of Reverse Circulation (RC) from 78 drill holes, 6,891.15m of underground core from 51 drill holes, and 586.5m of surface core from 2 drill holes.

Resource development expenditure for the quarter was \$2.60M. Drilling programs are summarised in Table 1 below.

Table 1: Summary of Resource Development Work Programs

Project	Activity	Project Description
Mount Pleasant Project : Homestead Underground - Black Flag West & VN01	33 UG diamond drill holes for 4,524.35m	Resource definition & extension
Mount Pleasant Project : Racetrack Open Cut Prospect	21 RC drill holes for 3,074m 2 surface diamond drill holes for 586.5m	Resource definition & extension
Carbine-Bullant Project : Bullant Underground – East Lode	18 UG diamond drill holes for 2,366.8m	Resource definition & extension
Carbine-Bullant Project : Wattlebird Open Cut Prospect	31 RC drill holes for 3,139m	Resource definition
Binduli Project : Fort Scott Open Cut Prospect	26 RC drill holes for 4,399m	Resource definition & extension
TOTAL	131 drill holes for 18,089.65m	

Homestead Underground Mine - Black Flag West & VN01 Mineralised Veins Mount Pleasant Project

Underground mining at Homestead is active in two main north trending, shear hosted mineralised veins labelled VN01 and VN03, and within the adjacent oblique trending Black Flag West Vein. The Black Flag West Vein is the dominant underground ore source at Homestead.

Combined underground resource development and grade control programs have recorded an advance of 4,524.35m from 33 diamond core drill holes. Programs have targeted resource definition and extension in deeper areas of Black Flag West, increased definition of two discrete higher grade areas within VN01, and a new target to the south of Black Flag West.

All programs have recorded encouraging results with recent down-hole intercepts including :

Black Flag West – down-dip from 1062 level	
HUD1010	4m @ 56.7g/t Au from 27.4m
HUD1029	2.35m @ 28.0g/t Au from 52.05m
HUD1033	3m @ 33.8g/t Au from 57.6m

Black Flag West – down-dip from 1022 level	
HUD991	1.1m @ 13.7g/t Au from 86m
HUD992	2.55m @ 9.64g/t Au from 68.75m

HUD994	1.8m @ 8.41g/t Au from 72.7m
HUD995	2.35m @ 5.50g/t Au from 53.9m
HUD997	4m @ 9.22g/t Au from 45.1m
	3.3m @ 3.55g/t Au from 52.2m
HUD1000	1.8m @ 28.8g/t Au from 10.05m
	3.85m @ 7.14g/t Au from 14.85m
HUD1001	3.45m @ 8.40g/t Au from 4.8m

Black Flag South	
HUD1038	1.6m @ 23.8g/t Au from 71.4m
HUD1039	6m @ 5.04g/t Au from 79.5m
	1m @ 10.7g/t Au from 88.5m
HUD1040	1m @ 18.8g/t Au from 57.6m

VN01 North down-dip	
HUD1016	1.35m @ 48.0g/t Au from 26.45m
HUD1018	0.95m @ 40.6g/t Au from 31.75m
HUD1020	2m @ 29.2g/t Au from 36.5m
HUD1021	0.75m @ 140g/t Au from 18.95

VN01 South Footwall Lodes	
HUD1044	3.5m @ 3.02g/t Au from 30.1m
HUD1046	5.2m @ 40.9g/t Au from 36.3m
HUD1047	3.6m @ 13.3g/t Au from 23.7m
	1.6m @ 25.6g/t Au from 43.7m
HUD1050	1.1m @ 56.6g/t Au from 25m
	3.25m @ 164g/t Au from 28.3m
HUD1051	2.75m @ 36.0g/t Au from 19.25m
	5.1m @ 40.2g/t Au from 30.5m

All analytical results are appended in Tables 2 - 7. Long section figures illustrating location of recent results for Black Flag West and VN01 are presented below in Figures 3 and 4.

Mineralisation at Homestead is hosted by massive to laminated high grade quartz-sulphide veins in mafic volcanic host rocks. At Black Flag West well developed marginal ankerite-sericite-silica-pyrite alteration selvages carry lower mineralised grades. The mineralised veins are oriented with a north-south strike at VN01 and VN03, and with a strike of between 110 and 140 degrees at Black Flag West. True width of the veining generally measures less than one metre, but locally records up to two metres in maximum width.

Recent deeper results from the Black Flag West Vein indicate scope for further resource addition locally at depth. VN01 results add to definition of discrete high grade zones which had been poorly defined previously.

Four drill holes into a previously untested area to the south of the Black Flag West Vein targeting a potential repetition of the vein have returned very positive mineralised results (1.6m at 23.8g/t Au from 71.4m in HUD1034, and 6m at 5.04g/t Au from 79.5m in HUD1039). Follow-up drilling is in progress.

Figure 3: Black Flag West Prospect – Schematic Long Section (main vein)

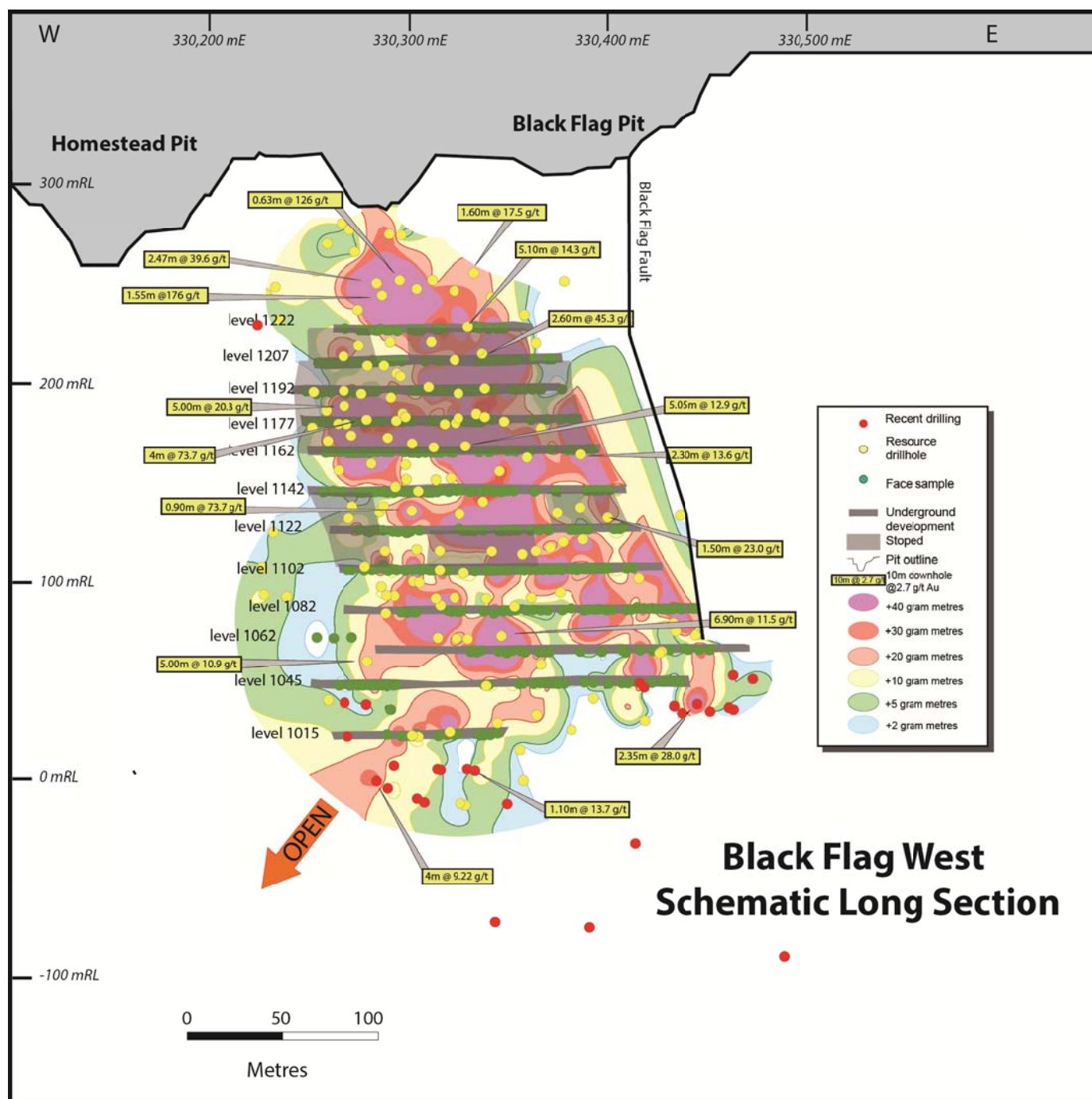
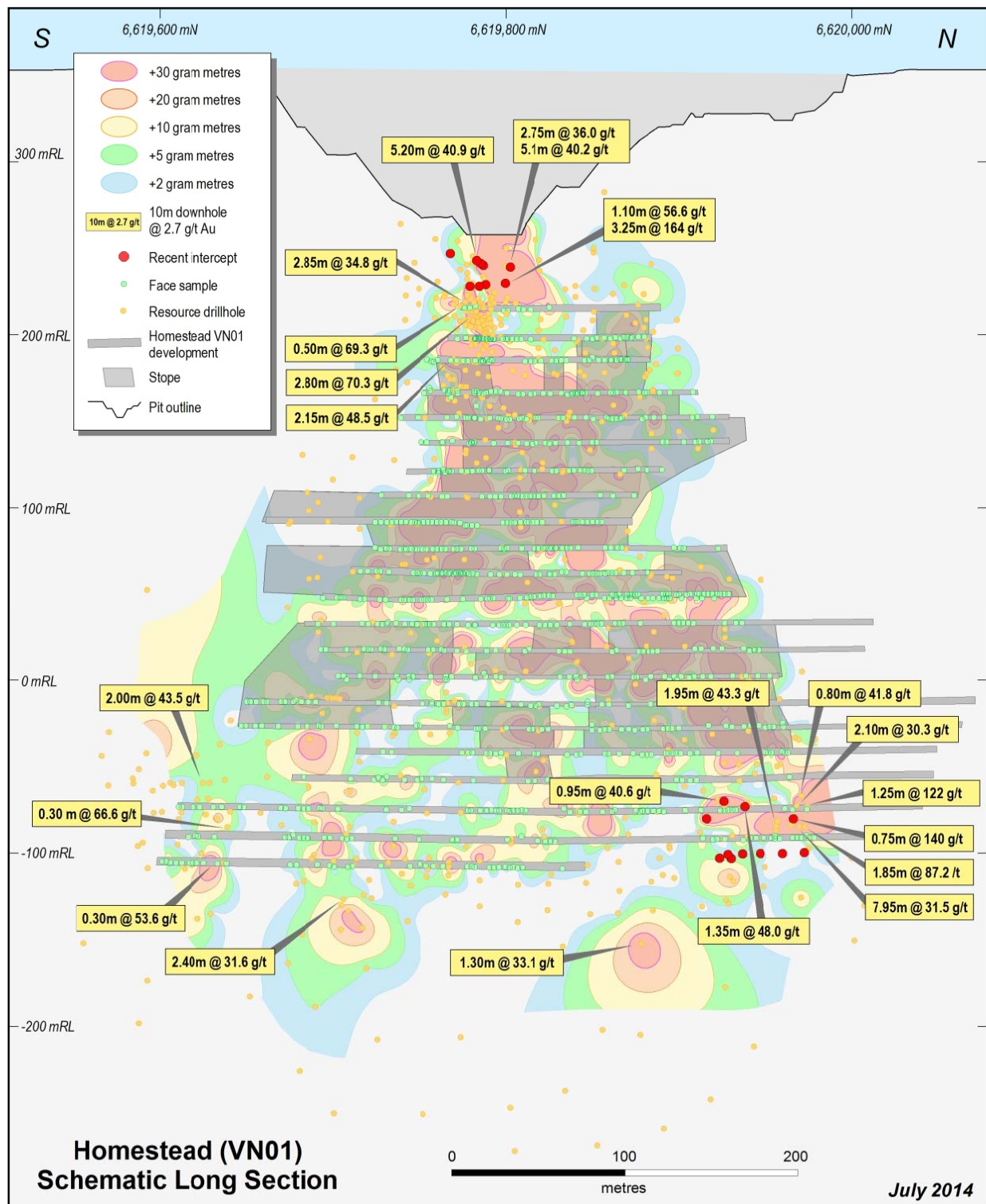


Figure 4: Homestead VN01 – Schematic Long Section (main vein)



Bullant Underground Mine, Carbine-Bullant Project

The Bullant Underground Mine is situated along the Zuleika Shear Zone, a prospective regional north-northwest trending structure. The Zuleika Shear Zone is a broad ductile to brittle structural corridor contained within a mafic unit in the mine area. The Shear Zone dips sub-vertically to steep east dipping.

Mineralisation occurs in up to four lodes (labelled the Main, East, West and Cross lodes) and is associated with silica-biotite-pyrite altered basalt and minor local quartz veining. Both the Main and East lodes remain open at depth.

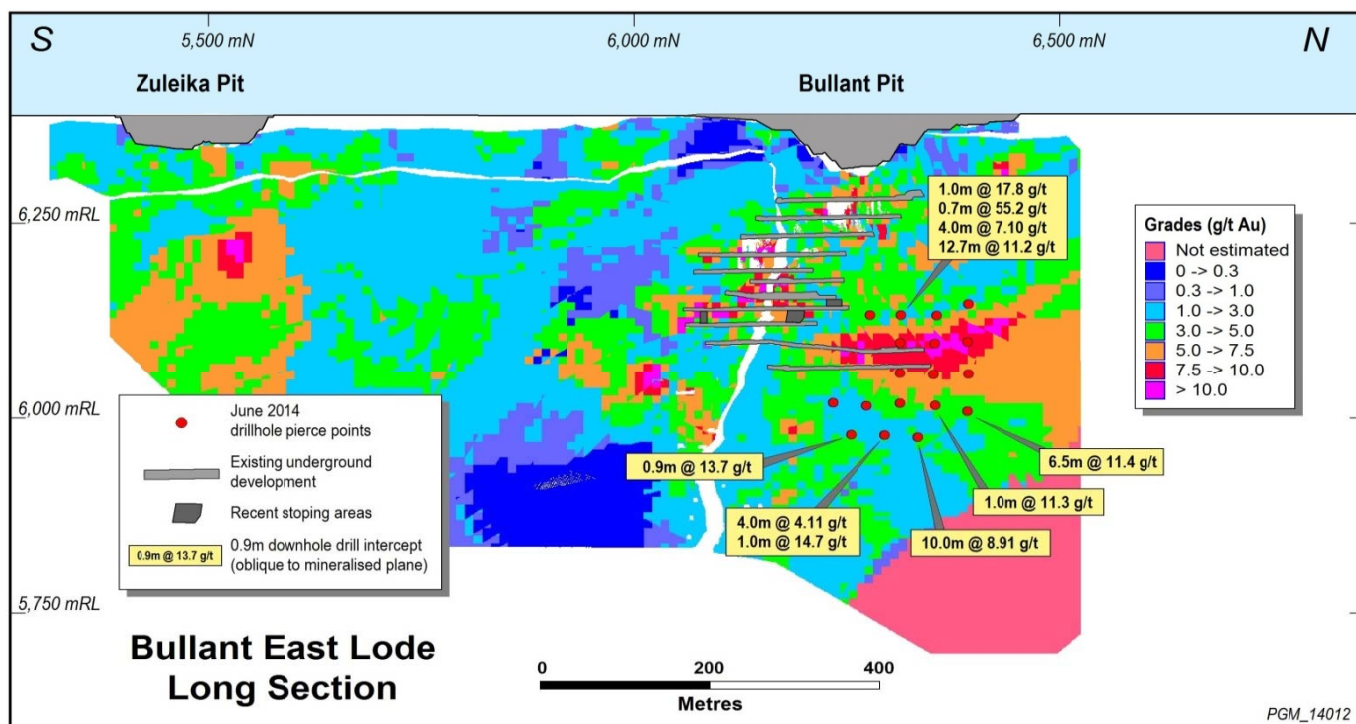
Northern extensions of the East Lode have been tested by recent diamond drilling. A total of 18 underground diamond drill holes have been completed for 2,366.8m. Significant down-hole results include :

BUGD1001	0.9m @ 13.7/t Au from 98.5m
BUGD1002	2m @ 6.97g/t Au from 19m
	5m @ 7.09g/t Au from 67m
BUGD1003	2.4m @ 4.90g/t Au from 66.4m
BUGD1004	1.7m @ 10.3g/t Au from 45m
BUGD1005	3.45m @ 4.41g/t Au from 78.25m
	4.0m @ 5.14g/t Au from 130m
	4.0m @ 5.15g/t Au from 148m
BUGD1006	1.5m @ 9.41g/t Au from 56.3m
	1.75m @ 7.80g/t Au from 68.8m
BUGD1007	2.8m @ 8.67g/t Au from 37.8m
	2.0m @ 8.85g/t Au from 64m
BUGD1008	1.6m @ 8.06g/t Au from 19m
	2.9m @ 11.6g/t Au from 31.8m
BUGD1009	0.7m @ 55.2g/t Au from 32.3m
	4.0m @ 6.54g/t Au from 45m
	12.7m @ 11.2g/t Au from 54.3m
BUGD1010	2.1m @ 6.45g/t Au from 66m
	2m @ 24.2g/t Au from 75.45m
	10m @ 8.91g/t Au from 81m
BUGD1011	1m @ 11.3g/t Au from 95.4m
BUGD1012	3m @ 6.88g/t Au from 68.3m
BUGD1015	6.5m @ 11.4g/t Au from 123.5m
BUGD1016	4m @ 9.65g/t Au from 111.3m
BUGD1017	2m @ 14.1g/t Au from 100m

All analytical results are appended in Table 8. A long section figure showing the location of recent results is presented below in Figure 5.

Results are encouraging, indicating good potential to extend higher grade mineralisation in the northern section of the East Lode, in particular further along strike to the north where limited drilling currently exists.

Figure 5: Bullant East Lode – Schematic Long Section showing recent drilling results against current resource model (yet to be updated)



Wattlebird Prospect, Carbine-Bullant Project

The Wattlebird Prospect is located within the Carbine-Bullant Project area, 700m north of the Bullant Underground Mine (Figure 6). Both Bullant and Wattlebird were acquired by NGF from Kalgoorlie Mining Company (KMC) during 2013.

Wattlebird has a pre-existing Mineral Resource estimate of 1.95Mt @ 1.37g/t Au containing 85,000oz, and a Probable Reserve of 229,000t @ 1.67g/t Au containing 12,000oz (See Resource and Reserve Update, ASX Announcement dated 24 January 2014). The prospect is an attractive open cut option due to a relatively low waste:ore strip ratio.

Recent drilling has been aimed at validating the resource for potential mining later in 2014. A total of 3,139m of RC drilling has been completed in 31 drill holes.

Significant recent drilling results (down-hole intercepts) include :

PCZC0124	16m @ 4.38g/t Au from 56m
PCZC0126	4m @ 9.22g/t Au from 34m
	13m @ 1.64g/t Au from 75m
PCZC0129	1m @ 17.1g/t Au from 29m
PCZC0132	34m @ 3.52g/t Au from 86m
PCZC0133	9m @ 1.51g/t Au from 122m
PCZC0143	10m @ 2.04g/t Au from 44m
	9m @ 1.65g/t Au from 64m
PCZC0144	6m @ 2.67g/t Au from 72m
PCZC0145	4m @ 3.98g/t Au from 111m
	7m @ 6.61g/t Au from 132m
PCZC0148	11m @ 1.77/t Au from 75m
PCZC0149	8m @ 5.66g/t Au from 118m

A full list of drilling results is appended in Table 9, and a drilling location plan is shown in Figure 7. A schematic cross section of the deposit is depicted below in Figure 8.

Mineralisation is hosted by a sheared contact between mafic and ultramafic volcanic lithologies with some porphyry intrusive also along the contact. Broad, robust higher grade mineralised intervals have been intersected by the recent drilling confirming historic drilling results and indicating some potential for a high grade plunging lode which requires further evaluation.

A resource update and optimisation re-evaluation are planned prior to proposed open cut mining.

Figure 6: Wattlebird Location Plan

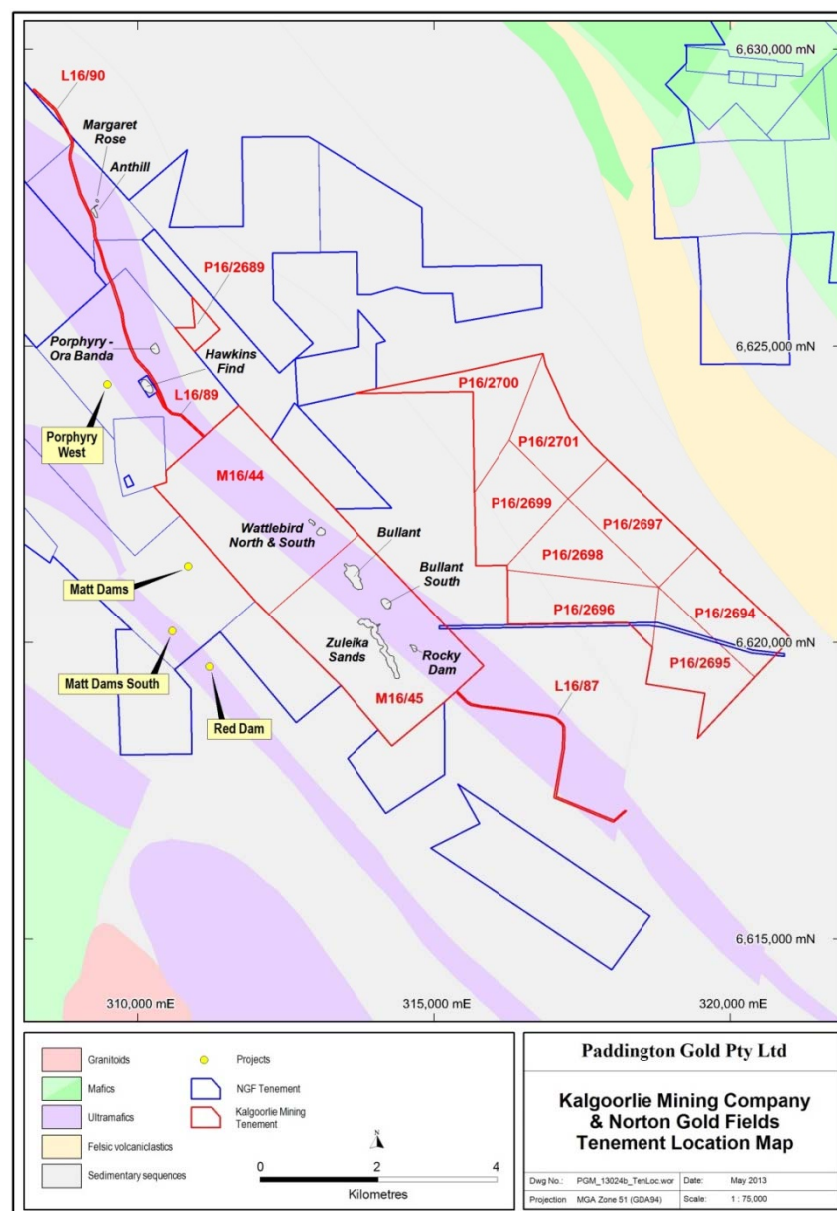
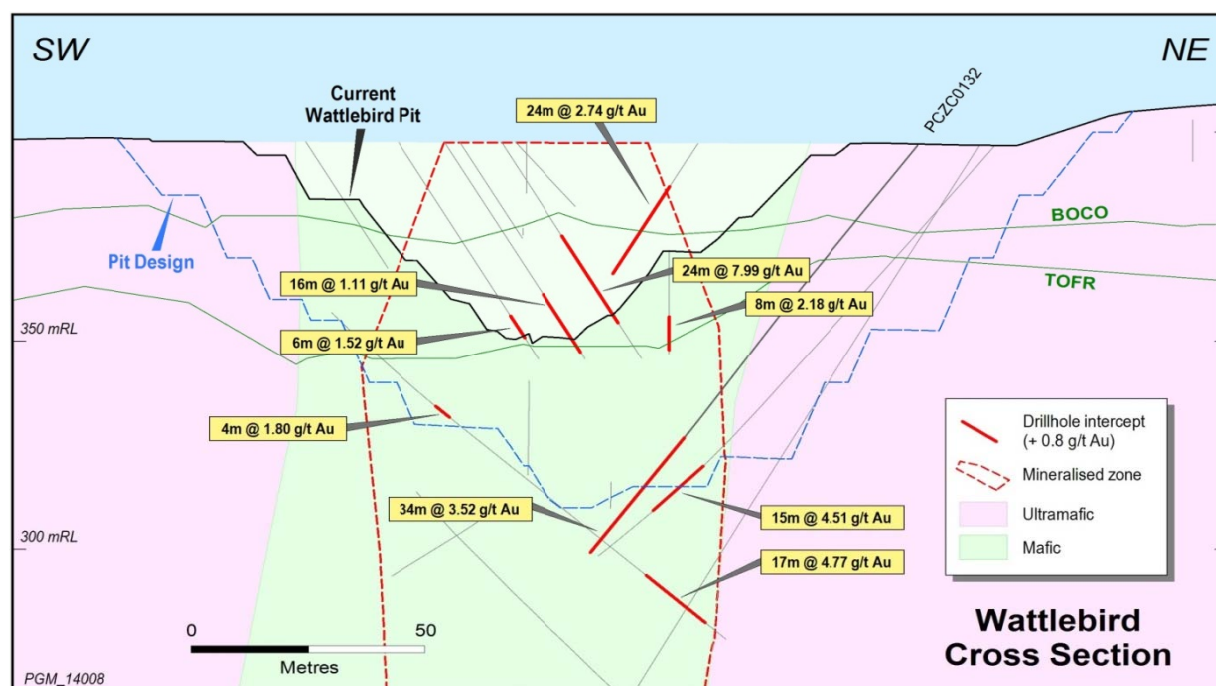


Figure 8: Wattlebird Prospect – Schematic Cross Section



Fort Scott Prospect, Binduli Project

The Fort Scott Prospect is located in the Binduli Project area and is an open pit target with potential for both higher grade oxide and primary mineralisation. An RC drilling program has been completed aimed at infilling core areas of the current resource and testing strike and depth extensions. A total of 26 RC drill holes have been completed for 4,399m.

Significant down-hole intercepts from the program include :

PJIC271	4m @ 3.20g/t Au from 43m
PJIC272	3m @ 4.75g/t Au from 42m
PJIC276	10m @ 1.40g/t Au from 108m
PJIC277	3m @ 6.03g/t Au from 84m
PJIC281	6m @ 29.1g/t Au from 138m
PJIC292	4m @ 2.91g/t Au from 118m
PJIC294	7m @ 1.66g/t Au from 43m
	3m @ 5.24g/t Au from 134m
	6m @ 2.76g/t Au from 141m
PJIC296	6m @ 5.55g/t Au from 148m
PJIC297	7m @ 3.34g/t Au from 79m
PJIC299	11m @ 2.06g/t Au from 50m
	14m @ 1.31g/t Au from 69m
	10m @ 11.9g/t Au from 157m
PJIC300	4m @ 5.02g/t Au from 111m
PJIC302	1m @ 15.8g/t Au from 173m
	9m @ 6.16g/t Au from 216m
PJIC304	4m @ 4.49g/t Au from 37m
	7m @ 2.17g/t Au from 54m
PJIC305	4m @ 3.17g/t Au from 202m
PJIC307	2m @ 7.28g/t Au from 45m

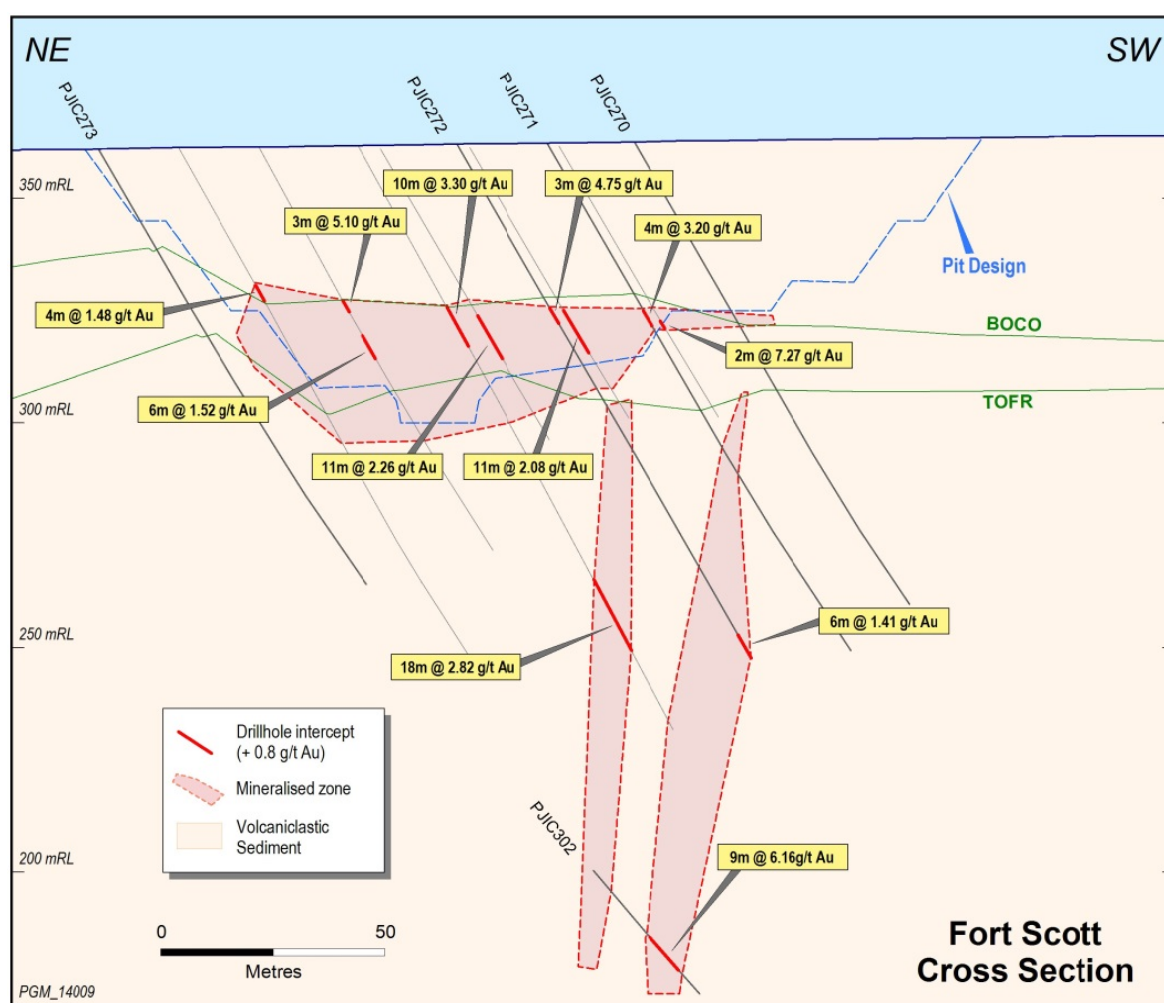
A full list of drilling results is appended in Table 10, and a drilling location plan is shown in Figure 9. A cross section figure showing recent results is depicted below in Figure 10.

The project area is hosted by a package of intermediate fine to coarse grained volcaniclastic sediments intruded by felsic to intermediate porphyry. Alteration typically comprises broad hematite-magnetite halos with mineralised albite-silica-carbonate-sericite-pyrite zones, often preferentially hosted by porphyry intrusives.

Mineralisation geometry comprises a sub-horizontal supergene blanket underlain by two to three steep to moderate west dipping primary lodes. High grade results have been returned from several primary zones indicating good potential for high grade ore shoots with underground mining potential.

Fort Scott has a previous Indicated and Inferred Mineral Resource estimate of 452,000t @ 2.01g/t Au containing 29,000oz, and a Probable Reserve of 229,000t @ 1.67g/t Au (23,000oz) (See Resource and Reserve Update, ASX Announcement dated 24 January 2014). Resource and reserve updates will be completed in due course.

Figure 10: Fort Scott Prospect – Schematic Cross Section showing recent drilling



Racetrack Prospect, Mount Pleasant Project

The Racetrack Deposit is located in the southern Mount Pleasant camp area and is composed of a series of north-westerly dipping mineralised lodes over a 2km strike extent. The shallow oxide extensions of mineralisation have been previously exploited, remnant sulphide mineralisation is refractory in nature. Historic metallurgical testwork indicates a high flotation recovery of sulphide hosted gold mineralisation, and effective recovery of gold through one of the oxidation processes, namely pressure oxidation, biological oxidation or ultra-fine grind oxidative leach.

In addition to the Racetrack Deposit, the Paddington tenement package contains several other historically significant refractory deposits including Gimlet South and Slippery Gimlet at the Ora Banda Project. In conjunction, these projects have the capacity to support a relatively high grade refractory processing stream that can add incremental production for Norton.

Racetrack has a currently defined, predominantly Inferred Mineral Resource estimate of 4.9Mt at 3.41g/t Au containing 541,000oz (See Resource and Reserve Update, ASX Announcement dated 24 January 2014). Mineralisation remains open down-dip, and along strike to a lesser extent.

The Company is progressing evaluation of a refractory processing stream with the first steps to include resource definition drilling (already underway), resource modelling and comprehensive metallurgical testwork at Racetrack.

Drilling progress to date has seen an advance of 21 RC drill holes for 3,074m and 2 surface diamond core drill holes for 586.5m. Analytical results were pending at the time of writing.

Figure 11: Racetrack Prospect – Schematic cross section

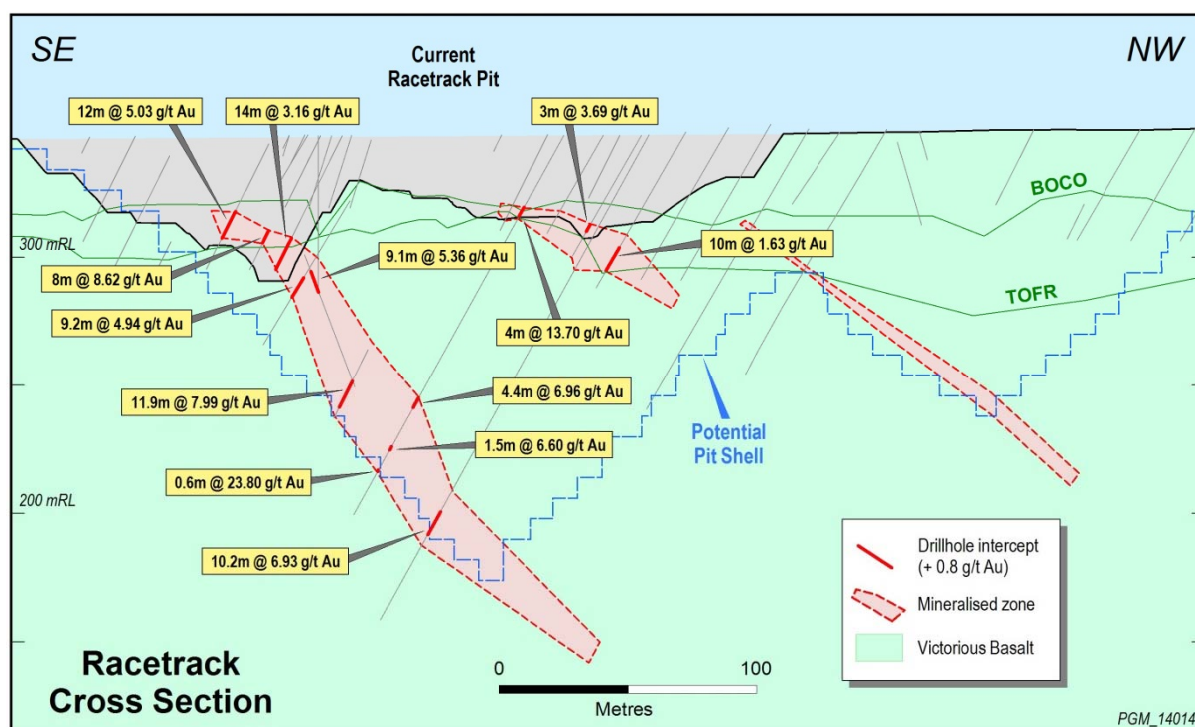


Table 2: Black Flag West – Significant UG Diamond Drilling Results down-dip from 1062 level

Hole ID	MGA East	MGA North	Dip	Azi	RL	Depth	From (m)	To (m)	DH Width (m)	Grade g/t Au
HUD1010	330539	6619952	-30.43	34.35	63.7	68.6	1.15	2.15	1	5.65
							27.4	31.4	4	56.7
							33.4	34.4	1	6.69
HUD1011	330539	6619951	-33.7	52.5	63.4	86.7	53	54	1	4.32
HUD1029	330540	6619951	-28.8	69.03	63.3	95.4	52.05	54.4	2.35	28.0
							60.4	61.4	1	5.56
							69.4	70.4	1	4.85
HUD1032	330540	6619951	-24.2	79.5	63.46	110.1	68.75	69.75	1	3.71
							95.85	96.85	1	3.58
HUD1033	330540	6619950	-10.3	87	63.99	110	57.6	60.6	3	33.8
							72.6	73.6	1	7.24
							77.1	78.1	1	4.53
Analysis by 30g Fire Assay										
Results compiled by using a 3.5g/t cut-off grade, no top-cut grade										
Maximum of 2m internal dilution, minimum interval of 0.3 m										

Table 3: Black Flag West – Significant UG Diamond Drilling Results – down-dip from 1022 level

[illegible]

Table 4: Black Flag West – Significant UG Diamond Drilling Results – down-dip from 1048 level

Hole ID	MGA East	MGA North	Dip	Azi	RL	Depth	From (m)	To (m)	DH Width (m)	Grade g/t Au
HUD1022	330300	6619905	-12	76	50.7	410.9				NSR
HUD1023	330300	6619905	-17.5	68	50.7	379.4	280	280.4	0.4	8.67
HUD1024	330300	6619905	-23	73	50.7	497.7				NSR
HUD1025	330300	6619905	-26	62	50.7	420.0				NSR
HUD1026	330300	6619905	-28	49	50.7	401.7	261.7	262	0.3	24.6

Analysis by 30g Fire Assay
Results compiled by using a 3.5g/t cut-off grade, no top-cut grade
Maximum of 2m internal dilution , minimum interval of 0.3 m
NSR - No significant result

Table 5: Black Flag South – Significant UG Diamond Drilling Results

Hole ID	MGA East	MGA North	Dip	Azi	RL	Depth	From (m)	To (m)	DH Width (m)	Grade g/t Au
HUD1038	330288	6619827	-15	91.3	54.9	218.9	71.4	73	1.6	23.8
HUD1039	330288	6619827	1	82	54.9	155.5	79.5	85.5	6	5.04
							88.5	89.5	1	10.7
							94.7	95.7	1	6.61
							101	102	1	5.34
							105	106	1	8.89
HUD1040	330288	6619827	0	69.7	54.9	128.4	41	42	1	18.8
HUD1041	330283	6619813	0	169	54.9	363.7				NSR
Analysis by 30g Fire Assay										
Results compiled by using a 3.5g/t cut-off grade, no top-cut grade										
Maximum of 2m internal dilution , minimum interval of 0.3 m										
NSR - No significant result										

Table 6: VN01 North down-dip– Significant UG Diamond Drilling Results

Hole ID	MGA East	MGA North	Dip	Azi	RL	Depth	From (m)	To (m)	DH Width (m)	Grade g/t Au
HUD1012	330200	6620119	-23	53	-91.6	43	19.75	20.75	1	3.76
HUD1013	330200	6620117	-35.5	88	-91.9	30				NSR
HUD1014	330198	6620115	-33.5	147	-91.9	29.3	14.5	15.5	1	7.81
HUD1015	330197	6620114	-23.5	172	-91.6	54.5	20.9	21.2	0.3	4.56
							28.5	29.9	1.4	4.79
HUD1016	330197	6620115	-46	168	-92.2	46.95	26.45	27.8	1.35	48.0
HUD1017	330189	6620106	-22.5	165	-92.1	65.6	27.45	28	0.55	4.48
							45.9	47	1.1	6.50
HUD1018	330189	6620106	-46.5	165	-92.6	68.2	31.75	32.7	0.95	40.6
							57.75	60	2.25	3.47
HUD1020	330189	6620106	-34.5	178.5	-92.6	65.2	36.5	38.5	2	29.2
HUD1021	330200	6620118	27.5	65.5	-88.9	34.4	18.95	19.7	0.75	140

Analysis by 30g Fire Assay

Results compiled by using a 3.5g/t cut-off grade, no top-cut grade

Maximum of 2m internal dilution, minimum interval of 0.3 m

NSR - No significant result

Table 7: VN01 South Footwall Lodes– Significant UG Diamond Drilling Results

Hole ID	MGA East	MGA North	Dip	Azi	RL	Depth	From (m)	To (m)	DH Width (m)	Grade g/t Au
HUD1043	330283	6619976	-20	185.5	228.7	59.3				NSR
HUD1044	330283	6619976	-0.5	185.5	229.2	64.2	30.1	33.6	3.5	3.02
HUD1045	330283	6619976	17.5	185.5	230.0	66	33.3	34.3	1	6.71
HUD1046	330276	662072	-22.2	208.4	228.4	47.4	26.9	27.6	0.7	4.95
							36.3	41.5	5.2	40.94
HUD1047	330282	6619976	-2	208.4	229.1	74.2	23.7	27.3	3.6	13.3
							37	39.45	2.45	4.08
							43.7	45.3	1.6	25.6
							48.5	49.1	0.6	3.59
HUD1048	330282	6619976	16	229.5	230.1	62.6	30.3	30.6	0.3	7.72
							34	35	1	4.61
							39.4	40	0.6	5.07
HUD1049	330280	6619976	-19.5	229.5	228.3	63				NSR
HUD1050	330280	6619976	1	229.5	229.3	74.1	9.8	10.2	0.4	3.89
							25	26.1	1.1	56.7
							28.3	31.55	3.25	164
							36.3	37	0.7	4.12
							45	47.2	2.2	3.21
HUD1051	330280	6619976	20	229.5	230.6	69	14.5	15.1	0.6	4.56
							19.25	22	2.75	36.1
							30.5	35.6	5.1	40.2

Analysis by 30g Fire Assay

Results compiled by using a 3.5g/t cut-off grade, no top-cut grade

Maximum of 2m internal dilution, minimum interval of 0.3 m

NSR - No significant result

Hole ID	Local East	Local North	Local RL	Dip	Az	Depth	Depth From	Depth To	DH Width (m)	Grade g/t Au
BUGD1001	23057.0	6295.0	6085.3	-66.0	215.7	171.0	98.5	99.4	0.9	13.7
							114.0	115.0	1.0	3.90
BUGD1002	23057.4	6294.3	6085.6	-46.0	199.7	141.0	19.0	21.0	2.0	6.97
							67.0	72.0	5.0	7.09
BUGD1003	23056.5	6295.4	6085.4	-62.0	238.2	119.6	19.4	20.2	0.8	4.03
							66.4	68.8	2.4	4.90
BUGD1004	23056.3	6295.3	6087.8	53.5	234.8	82.9	25.8	26.3	0.5	7.08
							41.6	41.95	0.35	15.2
							45.0	46.7	1.7	10.3
BUGD1005	23057.0	6307.7	6085.3	-73.5	245.2	165.0	78.25	81.70	3.45	4.41
							116.00	117.00	1.00	3.83
							121.60	122.50	0.90	5.16
							130.00	134.00	4.00	5.14
							148.00	152.00	4.00	5.15
BUGD1006	23056.8	6308.8	6085.3	-68.0	280	125.6	35.0	36.5	1.5	5.6
							56.3	57.8	1.5	9.4
							68.8	70.5	1.8	7.8
							99.0	100.4	1.5	5.0
							117.7	118.7	1.0	5.1
BUGD1007	23056.6	6308.8	6085.6	-47.0	280.2	69.1	37.8	40.6	2.8	8.67
							64.0	66.0	2.0	8.85
BUGD1008	23056.6	6308.8	6087.8	17.5	282.8	47.5	19.0	20.6	1.6	8.06
							31.8	34.7	2.9	11.6
BUGD1009	23056.7	6308.9	6090.3	52.0	284.4	80.3	19.0	20.0	1.0	17.8
							32.3	33.0	0.7	55.2
							40.2	41.0	0.8	5.27
							45.0	49.0	4.0	6.54
							54.3	67.0	12.7	11.2
BUGD1010	23057.4	6309.4	6085.4	-68.5	308.8	173.5	66	68.1	2.1	6.45
							75.45	77.45	2	24.2
							81	91	10	8.91
BUGD1011	23057.5	6310.0	6085.7	-51.0	324.2	152.6	83.0	84.0	1.0	3.8
							95.4	96.4	1.0	11.3
BUGD1012	23057.3	6310.1	6086.1	-30	322.7	101.5	68.3	71.3	3.0	6.88
BUGD1013	23057.0	6310.5	6087.5	9	323.1	90.0	64.9	65.7	0.8	4.27
BUGD1014	23057.1	6310.5	6089.2	35	325.6	111.0				NSR
BUGD1015	23057.8	6310.2	6085.9	-42.0	335.9	239.6	123.5	130.0	6.5	11.4
							228.6	229.3	0.7	5.1
BUGD1016	23057.7	6310.5	6086.5	-19	335.4	167.6	111.3	115.3	4.0	9.65
BUGD1017	23057.6	6310.5	6087.2	6	333.5	152.4	100.0	102.0	2.0	14.1
BUGD1018	23057.6	6310.6	6088.7	31	334.8	176.6	128.1	128.9	0.8	9.21

NSR - No significant result

Table 9: Wattlebird Prospect – Significant RC Drilling Results

Hole ID	MGA East	MGA North	Dip	Azi	RL	Depth	From (m)	To (m)	DH Width (m)	Grade g/t Au
PCZC0122	312869	6622101	-60	45	401.0	66	20	21	1	2.74
							27	29	2	1.5
							40	41	1	1.12
PCZC0123	312969	6622090	-60	225	398.9	102	70	71	1	2.88
							82	85	3	1.18
							95	100	5	1.3
PCZC0124	312936	6622086	-58	225	399.4	138	11	13	2	2.16
							23	24	1	0.87
							27	28	1	1.34
							33	34	1	2.63
							56	72	16	4.38
							117	118	1	1.04
							121	122	1	0.83
							127	128	1	2.16
PCZC0125	312958	6622106	-60	225	399.0	78	52	53	1	0.95
PCZC0126	312968	6622063	-60	225	399.0	120	34	38	4	9.22
							42	47	5	0.67
							75	88	13	1.64
							99	101	2	2.16
							108	109	1	1.08
PCZC0127	312917	6622095	-53	225	399.8	78	14	16	2	1.18
							52	57	5	1.03
							65	66	1	2.32
PCZC0128	312923	6622093	-90	360	399.7	72	6	7	1	0.83
							22	24	2	2.85
							28	29	1	1.9
PCZC0129	312998	6621988	-58	45	396.3	36	0	2	2	4.45
							29	30	1	17.1
PCZC0130	313013	6621955	-60	45	398.1	54	49	52	3	0.96
PCZC0131	313111	6621948	-60	225	396.9	120	77	79	2	1.55
							83	84	1	2.33
							97	98	1	2.7
PCZC0132	313130	6621939	-53	225	396.9	120	86	120	34	3.52
PCZC0133	313148	6621929	-57	225	396.4	174	100	101	1	1.13
							122	131	9	1.51
							151	153	2	1.29
							161	163	2	1.46
							167	168	1	1.04
							171	173	2	1.39
PCZC0134	313161	6621913	-57	225	396.4	144	98	99	1	1.89
							115	116	1	0.88
PCZC0135	313172	6621897	-60	225	396.4	120	0	1	1	1.32
							87	90	3	1.43
PCZC0136	313044	6621946	-60	45	398.1	66	32	33	1	3.75
							41	42	1	0.91
PCZC0137	313023	6621925	-60	45	398.4	84	3	4	1	0.95
							30	33	3	1.63
PCZC0138	313005	6621908	-58	45	398.1	66				NSR
PCZC0139	313039	6621962	-58	45	398.4	65	15	16	1	2.11
							19	20	1	1.28

Table 9: Wattlebird Prospect – Significant RC Drilling Results (Cont.)

Hole ID	MGA East	MGA North	Dip	Azi	RL	Depth	From (m)	To (m)	DH Width (m)	Grade g/t Au
PCZC0140	313015	6621939	-57	45	398.2	84	24	26	2	1.38
							29	34	5	0.85
							63	64	1	8.32
							72	73	1	0.86
PCZC0141	312989	6621912	-60	45	398.1	78	15	16	1	1.09
							40	41	1	1.23
							49	50	1	2.63
							55	56	1	4.03
PCZC0142	312986	6621937	-58	45	398.6	110	9	10	1	4.28
							80	81	1	0.84
							94	95	1	4.88
PCZC0143	312967	6621947	-52	45	398.6	120	28	29	1	0.97
							44	54	10	2.04
							57	60	3	0.99
							64	73	9	1.65
							79	81	2	3.96
							90	92	2	4.26
							95	96	1	1.24
							103	105	2	1.27
PCZC0144	312958	6621966	-55	45	398.9	108	39	42	3	1.06
							45	49	4	1.87
							62	65	3	0.89
							68	69	1	0.97
							72	78	6	2.67
							93	95	2	0.98
PCZC0145	312916	6621953	-53	45	398.8	162	101	102	1	1.71
							105	106	1	2.75
							111	115	4	3.98
							127	129	2	1.16
							132	139	7	6.61
							150	151	1	1.77
PCZC0146	312930	6621995	-54	45	399.5	102	61	64	3	1.11
							70	74	4	0.94
							90	91	1	2.13
							98	99	1	1.05
PCZC0147	312895	6621989	-55	45	399.3	48				NSR
PCZC0148	313018	6621828	-55	45	397.5	114	75	86	11	1.77
							89	91	2	2.44
PCZC0149	313050	6621806	-53	45	397.4	144	51	57	6	1.3
							118	126	8	5.66
PCZC0150	313073	6621800	-58	45	397.3	144	121	122	1	1.93
							126	132	6	1.29
PCZC0151	313112	6621805	-58	45	396.7	102	64	65	1	0.94
PCZC0152	313103	6621800	-60	45	396.5	120				NSR

Analysis by 30g Fire Assay

Results compiled by using a 0.8g/t cut-off grade, no top-cut grade

Maximum of 2m internal dilution , minimum interval of 1m

NSR - No significant result

Figure 7: Wattlebird Prospect – RC Drill hole location plan

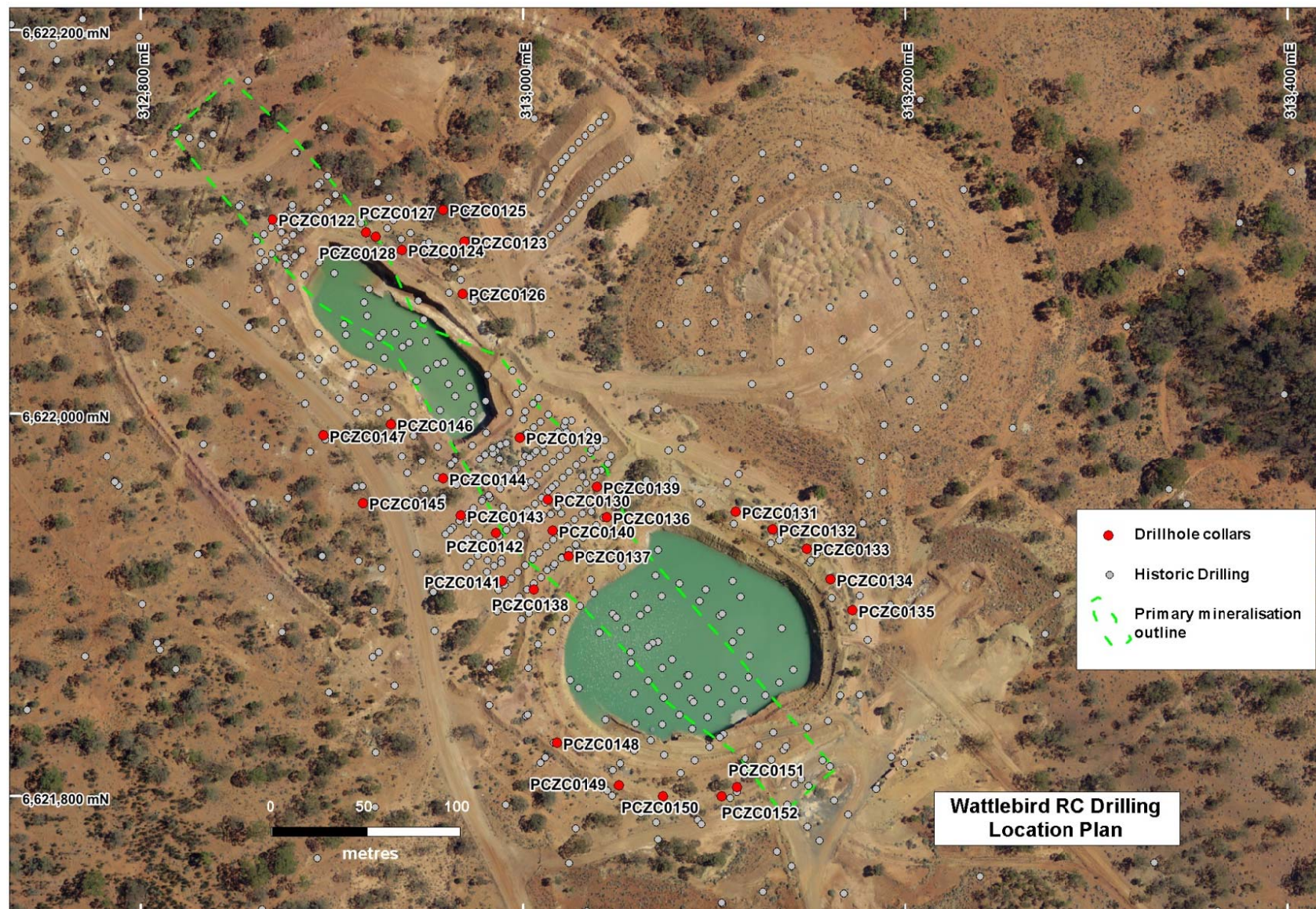


Table 10: Fort Scott Prospect – Significant RC Drilling Results

Hole ID	MGA East	MGA North	Dip	Azi	RL	Depth	From (m)	To (m)	DH Width (m)	Grade g/t Au
PJIC271	344846	6593557	-60	45	362.3	132	43	47	4	3.2
							79	80	1	3.88
							83	84	1	1.86
							115	116	1	1.49
PJIC272	344828	6593604	-60	45	362.0	132	42	45	3	4.75
							61	63	2	1.39
							67	68	1	2.12
							76	77	1	3.18
							126	132	6	1.41
PJIC275	344852	6593618	-60	45	362.0	102	46	47	1	1.42
							99	100	1	1.5
PJIC276	344821	6593591	-60	45	362.0	144	21	22	1	2.57
							42	44	2	4.83
							51	55	4	0.54
							104	105	1	1.9
							108	118	10	1.4
PJIC277	344791	6593566	-60	43	362.0	120	139	140	1	1.47
							31	33	2	1.88
							77	81	4	1.77
							84	87	3	6.03
PJIC278	344760	6593541	-60	45	362.0	120	71	72	1	1.47
PJIC279	344841	6593643	-60	43	362.0	96	44	46	2	2.21
PJIC280	344826	6593654	-60	45	362.0	108	60	64	4	0.64
							69	72	3	1.35
							100	101	1	1.31
PJIC281	344796	6593629	-60	45	362.0	150	39	42	3	3.32
							46	47	1	1.51
							125	134	9	0.7
							138	144	6	29.1
							149	150	1	1.84
PJIC282	344780	6593616	-60	45	362.0	114	31	32	1	0.99
							36	37	1	1.09
							57	61	4	0.67
PJIC283	344765	6593606	-60	45	361.6	114	91	94	3	0.89
PJIC284	344814	6593698	-60	45	362.9	120	47	48	1	0.96
PJIC285	344960	6593365	-60	45	363.5	138	54	56	2	2.18
							68	74	6	1.11
							78	80	2	1.28
PJIC286	344779	6593893	-60	45	362.6	138				NSR
PJIC287	344718	6593841	-60	45	362.4	138	48	50	2	1.63
							88	89	1	2.23
							99	100	1	1.76
PJIC288	344657	6593790	-60	45	361.4	138				NSR
PJIC289	344650	6594045	-60	45	363.5	138	40	41	1	1.25
PJIC290	344589	6593994	-60	45	361.8	138	1	2	1	0.81
							124	125	1	0.87
							129	130	1	0.99
PJIC291	344519	6594167	-60	45	362.7	144	66	68	2	1.42
							75	76	1	1.15
							84	85	1	1.25
PJIC292	344900	6593404	-60	45	362.6	180	38	41	3	1.51
							114	115	1	4.05
							118	122	4	2.91
							125	126	1	1.24
PJIC293	344885	6593365	-60	45	362.1	162	33	34	1	1.79
							42	43	1	1.12
							58	59	1	3.11
							70	71	1	3.2
							78	81	3	2
							84	85	1	0.93
							90	92	2	3.84
							108	109	1	1.04
							150	152	2	2.39
PJIC294	344842	6593354	-60	45	361.5	174	159	160	1	8.58
							43	50	7	1.66
							60	61	1	2.5
							66	67	1	2.53
							83	84	1	4.85
							102	103	1	2.51
							116	117	1	1.03
							134	137	3	5.24
PJIC295	344922	6593459	-60	45	363.4	162	141	147	6	2.76
							152	155	3	1.7
							52	53	1	1.3
							57	59	2	4.52
							68	72	4	1.56
							95	96	1	1.01
							106	107	1	1.53

Table 10: Fort Scott Prospect – Significant RC Drilling Results (cont.)

Hole ID	MGA East	MGA North	Dip	Azi	RL	Depth	From (m)	To (m)	DH Width (m)	Grade g/t Au
PJIC296	344856	6593399	-60	50	361.8	222	41	42	1	2.7
							47	48	1	1.95
							59	62	3	2.84
							65	66	1	0.95
							69	70	1	3.94
							76	80	4	0.9
							92	93	1	1.1
							97	99	2	3.85
							103	104	1	0.85
							112	113	1	2.1
							120	121	1	1.3
							148	154	6	5.55
							160	161	1	1.08
							178	181	3	1.6
							192	193	1	1.13
PJIC297	344814	6593358	-60	45	361.1	120	41	42	1	1.05
							55	56	1	0.87
							66	67	1	0.94
							73	74	1	2.46
							79	86	7	3.34
PJIC298	344854	6593461	-60	45	362.0	168	34	36	2	1.85
							40	41	1	0.96
							50	51	1	3.02
							54	56	2	1.12
							65	73	8	0.94
							124	125	1	1.47
							143	144	1	2.82
PJIC299	344825	6593434	-60	45	361.6	198	37	38	1	3.02
							41	43	2	1.63
							46	47	1	6.22
							50	61	11	2.06
							64	65	1	1.76
							69	83	14	1.31
							103	104	1	2.04
							153	154	1	1.57
							157	167	10	11.9
PJIC300	344865	6593498	-60	45	362.4	151	46	49	3	0.96
							56	57	1	1.11
							77	78	1	1.17
							99	100	1	1.68
							104	105	1	2.3
							111	115	4	5.02
							119	120	1	6.44
							124	127	3	2.48
							136	137	1	9.21
PJIC301	344777	6593445	-60	45	360.9	157	37	38	1	1.31
PJIC302	344756	6593507	-60	45	360.9	235	173	174	1	15.8
							183	184	1	2.3
							201	202	1	0.9
							216	225	9	6.16
PJIC303	344835	6593608	-60	45	362.4	162	45	46	1	0.8
							90	91	1	1.13
							94	95	1	1.43
							127	130	3	2.79
PJIC304	344804	6593582	-60	45	361.8	205	37	41	4	4.49
							46	48	2	2.06
							54	61	7	2.17
							128	130	2	3.19
							138	139	1	1.42
							144	145	1	1.39
PJIC305	344773	6593556	-60	45	361.4	217	60	61	1	3.81
							110	114	4	1.23
							168	169	1	1.21
							176	177	1	1.56
							194	198	4	1.61
PJIC306	344761	6593578	-60	45	361.4	210	202	206	4	3.17
							114	115	1	2.54
							119	120	1	1.25
							145	146	1	2.28
							176	177	1	1.35
PJIC307	344783	6593698	-60	45	362.7	259	192	193	1	0.89
							9	10	1	1.83
							45	47	2	7.28
							50	51	1	0.88
							65	66	1	1.46
							163	164	1	0.82
PJIC308	344751	6593671	-60	45	361.9	211	202	203	1	0.82

Analysis by 30g Fire Assay
Results compiled by using a 0.8g/t cut-off grade, no top-cut grade
Maximum of 2m internal dilution
NSR - No significant result

Figure 9: Fort Scott Prospect – RC Drill hole location plan

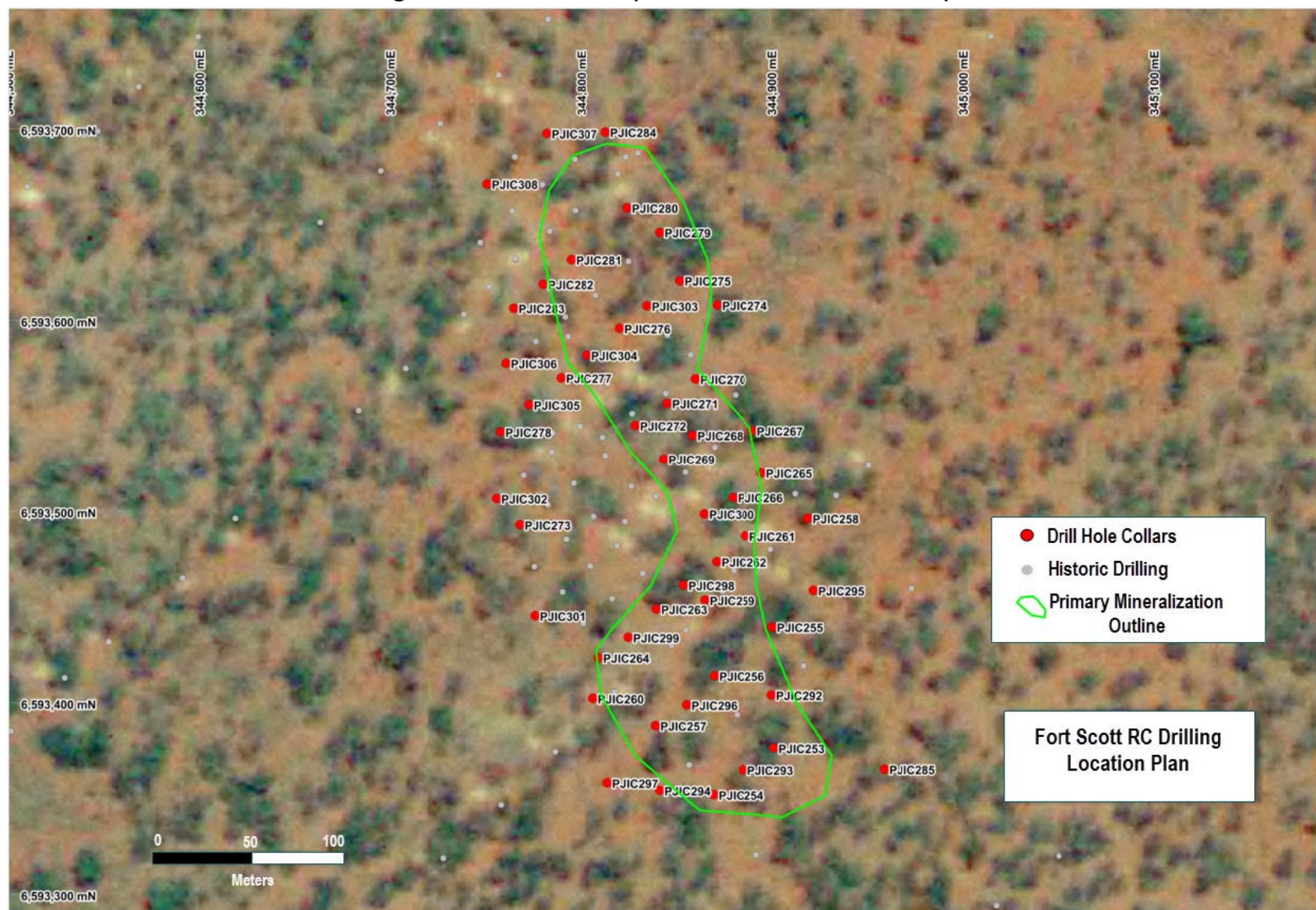


Table 11: Tenement Listing

Tenement	Status	Holders	Project	Term	Grant Date	Expiry	Area (Ha)
G24/11	Live	PADDINGTON GOLD PTY LIMITED	MT PLEASANT	21 Years (Renew ed)	02-Sep-88	01-Sep-30	9.4
G24/12	Live	PADDINGTON GOLD PTY LIMITED	MT PLEASANT	21 Years (Renew ed)	02-Sep-88	01-Sep-30	3.8
G24/19	Live	PADDINGTON GOLD PTY LIMITED	GRANTS PATCH	21 Years (Renew ed)	17-Oct-89	16-Oct-31	4.8
G24/20	Live	PADDINGTON GOLD PTY LIMITED	GRANTS PATCH	21 Years (Renew ed)	17-Oct-89	16-Oct-31	6.1
G24/3	Live	PADDINGTON GOLD PTY LIMITED	GRANTS PATCH	21 Years (Extended)	17-Mar-86	16-Mar-28	4.8
G24/38	Live	PADDINGTON GOLD PTY LIMITED	PADDINGTON OPS	21 Years	23-Aug-94	22-Aug-15	10
G24/8	Live	PADDINGTON GOLD PTY LIMITED	LADY BOUNTIFUL EXT'D	21 Years (Renew ed)	25-Nov-88	24-Nov-30	4.5
G24/9	Live	PADDINGTON GOLD PTY LIMITED	LADY BOUNTIFUL EXT'D	21 Years (Renew ed)	25-Nov-88	24-Nov-30	6
L16/48	Live	PADDINGTON GOLD PTY LIMITED	CARBINE ZULEIKA	5 Years (Renew ed)	07-Apr-92	06-Apr-17	15
L16/74	Live	PADDINGTON GOLD PTY LIMITED	CARBINE ZULEIKA	21 Years	07-Mar-03	06-Mar-24	30
L16/87	Live	KALGOORLIE MINING COMPANY (BULLANT) PTY LTD	CARBINE ZULEIKA	21 Years	20-Aug-12	19-Aug-33	14
L16/89	Live	KALGOORLIE MINING COMPANY (BULLANT) PTY LTD	CARBINE ZULEIKA	21 Years	03-Sep-12	02-Sep-33	5
L16/90	Live	KALGOORLIE MINING COMPANY (BULLANT) PTY LTD	CARBINE ZULEIKA	21 Years	03-Sep-12	02-Sep-33	18
L24/109	Live	PADDINGTON GOLD PTY LIMITED	GRANTS PATCH	5 Years (Renew ed)	20-Sep-88	19-Sep-18	0.04
L24/110	Live	PADDINGTON GOLD PTY LIMITED	GRANTS PATCH	5 Years (Renew ed)	20-Sep-88	19-Sep-18	1.4
L24/111	Live	PADDINGTON GOLD PTY LIMITED	GRANTS PATCH	5 Years (Renew ed)	25-Oct-88	24-Oct-18	0.04
L24/112	Live	PADDINGTON GOLD PTY LIMITED	GRANTS PATCH	5 Years (Renew ed)	22-Dec-88	21-Dec-18	0.35
L24/119	Live	PADDINGTON GOLD PTY LIMITED	PADDINGTON OPS	5 Years (Renew ed)	10-Apr-89	09-Apr-19	17
L24/125	Live	PADDINGTON GOLD PTY LIMITED	PADDINGTON	5 Years (Renew ed)	14-Jun-89	13-Jun-19	5.5
L24/135	Live	PADDINGTON GOLD PTY LIMITED	MT PLEASANT	5 Years (Renew ed)	28-Mar-91	27-Mar-16	7.8
L24/136	Live	PADDINGTON GOLD PTY LIMITED	MT PLEASANT	5 Years (Renew ed)	28-Mar-91	27-Mar-16	8.25
L24/144	Live	PADDINGTON GOLD PTY LIMITED	PADDINGTON	5 Years (Renew ed)	01-May-91	30-Apr-16	8.34
L24/145	Live	PADDINGTON GOLD PTY LIMITED	PADDINGTON	5 Years (Renew ed)	01-May-91	30-Apr-16	15.2
L24/155	Live	PADDINGTON GOLD PTY LIMITED	GRANTS PATCH	5 Years (Renew ed)	01-Oct-93	30-Sep-18	1.148
L24/163	Live	PADDINGTON GOLD PTY LIMITED	PADDINGTON	5 Years (Renew ed)	15-Oct-96	14-Oct-16	45.123
L24/164	Live	PADDINGTON GOLD PTY LIMITED	PADDINGTON	5 Years (Renew ed)	05-Dec-96	04-Dec-16	17.82
L24/171	Live	PADDINGTON GOLD PTY LIMITED		21 Years	20-Aug-12	19-Aug-33	3.28
L24/173	Live	PADDINGTON GOLD PTY LIMITED	PADDINGTON OPS	5 Years (Renew ed)	20-Jan-98	19-Jan-18	1
L24/177	Live	PADDINGTON GOLD PTY LIMITED	MT PLEASANT	21 Years	17-Aug-12	16-Aug-33	22
L24/178	Live	PADDINGTON GOLD PTY LIMITED	MT PLEASANT	5 Years (Renew ed)	10-Sep-99	09-Sep-14	51
L24/179	Live	PADDINGTON GOLD PTY LIMITED	GOLDEN CITIES	21 Years	17-Aug-12	16-Aug-33	24.7
L24/180	Live	PADDINGTON GOLD PTY LIMITED	GOLDEN CITIES	21 Years	17-Aug-12	16-Aug-33	10.6
L24/19	Live	PADDINGTON GOLD PTY LIMITED	PADDINGTON	21 Years	23-Oct-84	19-Oct-25	43.09
L24/196	Live	PADDINGTON GOLD PTY LIMITED	PADDINGTON	21 Years	04-May-09	03-May-30	2.4172
L24/198	Live	PADDINGTON GOLD PTY LIMITED	JANET IVEY JV	21 Years	11-Jan-11	10-Jan-32	44.16
L24/199	Live	PADDINGTON GOLD PTY LIMITED	JANET IVEY JV	21 Years	17-Aug-12	16-Aug-33	2.689
L24/20	Live	PADDINGTON GOLD PTY LIMITED	PADDINGTON	21 Years	23-Oct-84	19-Oct-25	1
L24/200	Live	PADDINGTON GOLD PTY LIMITED	LADY BOUNTIFUL EXT'D	21 Years	13-Sep-12	12-Sep-33	2.6084
L24/201	Live	PADDINGTON GOLD PTY LIMITED	LADY BOUNTIFUL EXT'D	21 Years	13-Sep-12	12-Sep-33	6.2027
L24/207	Live	PADDINGTON GOLD PTY LIMITED	PADDINGTON	21 Years	26-Jun-13	25-Jun-34	14.4037
L24/208	Live	PADDINGTON GOLD PTY LIMITED	PADDINGTON	21 Years	26-Jun-13	25-Jun-34	10.2685
L24/214	Pending	NORTON GOLD FIELDS LIMITED	PADDINGTON				
L24/215	Pending	NORTON GOLD FIELDS LIMITED	PADDINGTON				
L24/216	Pending	NORTON GOLD FIELDS LIMITED	PADDINGTON				
L24/218	Pending	NORTON GOLD FIELDS LIMITED	PADDINGTON				
L24/29	Live	PADDINGTON GOLD PTY LIMITED	PADDINGTON	21 Years	22-Jan-85	19-Oct-25	9.6
L24/34	Live	PADDINGTON GOLD PTY LIMITED	PADDINGTON	21 Years	04-Jun-85	19-Oct-25	14
L24/54	Live	PADDINGTON GOLD PTY LIMITED	MT PLEASANT	5 Years (Renew ed)	27-Oct-87	26-Oct-17	11.54
L24/63	Live	PADDINGTON GOLD PTY LIMITED	PADDINGTON OPS	5 Years (Renew ed)	23-Sep-86	22-Sep-16	27.4
L24/64	Live	PADDINGTON GOLD PTY LIMITED	GRANTS PATCH	5 Years (Renew ed)	09-Jun-87	08-Jun-17	0.01
L24/65	Live	PADDINGTON GOLD PTY LIMITED	GRANTS PATCH	5 Years (Renew ed)	09-Jun-87	08-Jun-17	4
L24/69	Live	PADDINGTON GOLD PTY LIMITED	GRANTS PATCH	5 Years (Renew ed)	23-Jun-87	22-Jun-17	0.01
L24/88	Live	PADDINGTON GOLD PTY LIMITED	GRANTS PATCH	5 Years (Renew ed)	05-May-88	04-May-18	3.36
L26/197	Live	BELLAMEL MINING PTY LTD	Binduli	5 Years (Renew ed)	03-Dec-93	02-Dec-18	1.951
L26/201	Live	NORTON GOLD FIELDS LIMITED	JANET IVEY JV	5 Years (Renew ed)	07-Jun-96	06-Jun-16	23
L26/202	Live	BELLAMEL MINING PTY LTD	Binduli	5 Years (Renew ed)	10-Apr-97	09-Apr-17	0.859
L26/203	Live	BELLAMEL MINING PTY LTD	Binduli	5 Years (Renew ed)	23-Jan-98	22-Jan-18	5.3476
L26/204	Live	BELLAMEL MINING PTY LTD	Binduli	5 Years (Renew ed)	13-Aug-97	12-Aug-17	20.0634

Table 11: Tenement Listing (Cont.)

Tenement	Status	Holders	Project	Term	Grant Date	Expiry	Area (Ha)
L26/247	Live	PADDINGTON GOLD PTY LIMITED	PADDINGTON	21 Years	04-May-09	03-May-30	8.2888
L26/253	Live	PADDINGTON GOLD PTY LIMITED	JANET IVEY JV	21 Years	17-Aug-12	16-Aug-33	20.3
L26/269	Pending	NORTON GOLD FIELDS LIMITED	PADDINGTON				
M15/1745	Live	BELLAMEL MINING PTY LTD	Binduli	21 Years	11-Dec-12	10-Dec-33	5
M16/106	Live	PADDINGTON GOLD PTY LIMITED	CARBINE ZULEIKA	21 Years (Renew ed)	15-Feb-89	14-Feb-31	505
M16/150	Live	PADDINGTON GOLD PTY LIMITED	CARBINE EAST (CB ZL)	21 Years (Renew ed)	03-Aug-90	02-Aug-32	875
M16/156	Live	PADDINGTON GOLD PTY LIMITED	CARBINE ZULEIKA	21 Years (Renew ed)	21-Sep-90	20-Sep-32	97.72
M16/211	Live	PADDINGTON GOLD PTY LIMITED	MT PSANT 3RD PARTY	21 Years	07-Aug-01	06-Aug-22	871
M16/222	Live	NORTON GOLD FIELDS LIMITED	KUNDANA	21 Years	12-Aug-08	11-Aug-29	330
M16/23	Live	WESTERN AUSTRALIAN RESOURCES LTD	CARBINE / BALGARRE	21 Years (Renew ed)	24-Jul-86	23-Jul-28	200
M16/243	Live	WESTERN AUSTRALIAN RESOURCES LTD	CARBINE / BALGARRE	21 Years	11-Sep-09	10-Sep-30	200
M16/244	Live	PADDINGTON GOLD PTY LIMITED	CARBINE EAST (CB ZL)	21 Years	07-Dec-98	06-Dec-19	180
M16/374	Live	PADDINGTON GOLD PTY LIMITED	CARBINE ZULEIKA	21 Years	14-May-10	13-May-31	182
M16/396	Live	PADDINGTON GOLD PTY LIMITED	ZULEIKA	21 Years	20-Apr-10	19-Apr-31	144
M16/397	Live	PADDINGTON GOLD PTY LIMITED	ZULEIKA	21 Years	20-Apr-10	19-Apr-31	122
M16/398	Live	PADDINGTON GOLD PTY LIMITED	ZULEIKA	21 Years	20-Apr-10	19-Apr-31	567
M16/399	Live	PADDINGTON GOLD PTY LIMITED	ZULEIKA	21 Years	20-Apr-10	19-Apr-31	445
M16/44	Live	KALGOORLIE MINING COMPANY (BULLANT) PTY LTD	CARBINE ZULEIKA	21 Years (Renew ed)	03-Nov-87	02-Nov-29	600
M16/45	Live	KALGOORLIE MINING COMPANY (BULLANT) PTY LTD	CARBINE ZULEIKA	21 Years (Renew ed)	03-Nov-87	02-Nov-29	600
M16/48	Live	PADDINGTON GOLD PTY LIMITED	CARBINE ZULEIKA	21 Years (Renew ed)	03-Nov-87	02-Nov-29	600
M16/58	Live	PADDINGTON GOLD PTY LIMITED	CARBINE ZULEIKA	21 Years (Renew ed)	09-Mar-88	08-Mar-30	292.65
M16/86	Live	PADDINGTON GOLD PTY LIMITED	CARBINE EAST (CB ZL)	21 Years (Renew ed)	18-May-88	17-May-30	380
M24/101	Live	NORTON GOLD FIELDS LIMITED	PADDINGTON OPS	21 Years (Renew ed)	17-Sep-87	16-Sep-29	965.92
M24/102	Live	PADDINGTON GOLD PTY LIMITED	MT PLEASANT	21 Years (Renew ed)	16-Dec-86	15-Dec-28	710
M24/113	Live	PADDINGTON GOLD PTY LIMITED	GRANTS PATCH	21 Years (Renew ed)	27-May-87	26-May-29	667.4
M24/137	Live	PADDINGTON GOLD PTY LIMITED	LADY BOUNTIFUL EXT'D	21 Years (Renew ed)	18-Sep-87	17-Sep-29	161.3
M24/138	Live	PADDINGTON GOLD PTY LIMITED	LADY BOUNTIFUL EXT'D	21 Years (Renew ed)	18-Sep-87	17-Sep-29	59.125
M24/148	Live	PADDINGTON GOLD PTY LIMITED	GRANTS PATCH	21 Years (Renew ed)	02-Dec-87	01-Dec-29	448.4
M24/155	Live	PADDINGTON GOLD PTY LIMITED	MT PLEASANT	21 Years (Renew ed)	06-Aug-87	05-Aug-29	385.375
M24/16	Live	PADDINGTON GOLD PTY LIMITED	MT PLEASANT	21 Years (Renew ed)	20-Apr-83	19-Apr-25	19.42
M24/165	Live	PADDINGTON GOLD PTY LIMITED	MT PLEASANT	21 Years (Renew ed)	24-Dec-87	23-Dec-29	924
M24/166	Live	PADDINGTON GOLD PTY LIMITED	MT PLEASANT	21 Years (Renew ed)	09-Feb-88	08-Feb-30	473.5
M24/167	Live	PADDINGTON GOLD PTY LIMITED	MT PLEASANT	21 Years (Renew ed)	09-Feb-88	08-Feb-30	200
M24/170	Live	PADDINGTON GOLD PTY LIMITED	GREATER ORA BANDA	21 Years (Renew ed)	03-Nov-87	02-Nov-29	819.75
M24/172	Live	PADDINGTON GOLD PTY LIMITED	MT PLEASANT	21 Years (Renew ed)	09-Feb-88	08-Feb-30	200
M24/180	Live	PADDINGTON GOLD PTY LIMITED	PADDINGTON	21 Years (Renew ed)	29-Dec-87	28-Dec-29	45.755
M24/181	Live	PADDINGTON GOLD PTY LIMITED	PADDINGTON	21 Years (Renew ed)	29-Dec-87	28-Dec-29	41.6
M24/182	Live	PADDINGTON GOLD PTY LIMITED	MT PLEASANT	21 Years (Renew ed)	14-Mar-88	13-Mar-30	200
M24/183	Live	NORTON GOLD FIELDS LIMITED	PADDINGTON	21 Years (Renew ed)	10-May-88	09-May-30	751
M24/187	Live	PADDINGTON GOLD PTY LIMITED	LADY BOUNTIFUL EXT'D	21 Years (Renew ed)	19-Jan-88	18-Jan-30	240
M24/188	Live	PADDINGTON GOLD PTY LIMITED	PADDINGTON	21 Years (Renew ed)	29-Mar-88	28-Mar-30	79.305
M24/193	Live	PADDINGTON GOLD PTY LIMITED	GRANTS PATCH	21 Years (Renew ed)	05-May-88	04-May-30	995
M24/194	Live	PADDINGTON GOLD PTY LIMITED	GREATER ORA BANDA	21 Years (Renew ed)	05-May-88	04-May-30	960
M24/20	Live	PADDINGTON GOLD PTY LIMITED	PADDINGTON	21 Years (Renew ed)	20-Oct-83	19-Oct-25	600
M24/205	Live	PADDINGTON GOLD PTY LIMITED	LADY BOUNTIFUL EXT'D	21 Years (Renew ed)	19-Jan-88	18-Jan-30	550
M24/211	Live	PADDINGTON GOLD PTY LIMITED	MT PLEASANT	21 Years (Renew ed)	30-May-88	29-May-30	137.3
M24/220	Live	PADDINGTON GOLD PTY LIMITED	LADY BOUNTIFUL EXT'D	21 Years (Renew ed)	30-May-88	29-May-30	13.02
M24/223	Live	PADDINGTON GOLD PTY LIMITED	MT PLEASANT	21 Years (Renew ed)	14-Mar-88	13-Mar-30	157.5
M24/227	Live	PADDINGTON GOLD PTY LIMITED	MT PLEASANT	21 Years (Renew ed)	27-Jul-88	26-Jul-30	80
M24/229	Live	PADDINGTON GOLD PTY LIMITED	MT PLEASANT	21 Years (Renew ed)	30-May-88	29-May-30	114.1
M24/231	Live	PADDINGTON GOLD PTY LIMITED	NEW BELLEVUE	21 Years (Renew ed)	31-May-88	30-May-30	14.56
M24/234	Live	PADDINGTON GOLD PTY LIMITED	MT PLEASANT	21 Years (Renew ed)	13-Jun-88	12-Jun-30	370.6
M24/236	Live	PADDINGTON GOLD PTY LIMITED	MT PLEASANT	21 Years (Renew ed)	13-Jun-88	12-Jun-30	121.75
M24/239	Live	NORTON GOLD FIELDS LIMITED	PADDINGTON	21 Years (Renew ed)	21-Sep-88	20-Sep-30	889.6
M24/240	Live	NORTON GOLD FIELDS LIMITED	PADDINGTON	21 Years (Renew ed)	21-Sep-88	20-Sep-30	641
M24/251	Live	NORTON GOLD FIELDS LIMITED	PADDINGTON	21 Years (Renew ed)	25-Nov-88	24-Nov-30	875.6
M24/255	Live	PADDINGTON GOLD PTY LIMITED	NEW BELLEVUE	21 Years (Renew ed)	25-Nov-88	24-Nov-30	767

Table 11: Tenement Listing (Cont.)

Tenement	Status	Holders	Project	Term	Grant Date	Expiry	Area (Ha)
M24/256	Live	PADDINGTON GOLD PTY LIMITED	MT PLEASANT	21 Years (Renew ed)	04-Nov-88	03-Nov-30	122
M24/265	Live	PADDINGTON GOLD PTY LIMITED	MT PLEASANT	21 Years (Renew ed)	02-Sep-88	01-Sep-30	264
M24/266	Live	PADDINGTON GOLD PTY LIMITED	MT PLEASANT	21 Years (Renew ed)	29-Sep-88	28-Sep-30	124
M24/267	Live	PADDINGTON GOLD PTY LIMITED	MT PLEASANT	21 Years (Renew ed)	02-Sep-88	01-Sep-30	1.77
M24/270	Live	PADDINGTON GOLD PTY LIMITED	LADY BOUNTIFUL EXT'D	21 Years (Renew ed)	24-Oct-88	23-Oct-30	225
M24/271	Live	PADDINGTON GOLD PTY LIMITED	LADY BOUNTIFUL EXT'D	21 Years (Renew ed)	15-Feb-89	14-Feb-31	104.25
M24/272	Live	PADDINGTON GOLD PTY LIMITED	LADY BOUNTIFUL EXT'D	21 Years (Renew ed)	15-Feb-89	14-Feb-31	200
M24/29	Live	PADDINGTON GOLD PTY LIMITED	GREATER ORA BANDA	21 Years (Renew ed)	04-Jan-84	03-Jan-26	978.3
M24/291	Live	PADDINGTON GOLD PTY LIMITED	LADY BOUNTIFUL EXT'D	21 Years (Renew ed)	29-Mar-89	28-Mar-31	400
M24/295	Live	PADDINGTON GOLD PTY LIMITED	GRANTS PATCH	21 Years (Renew ed)	11-Jul-89	10-Jul-31	161
M24/300	Live	PADDINGTON GOLD PTY LIMITED	GRANTS PATCH	21 Years (Renew ed)	29-Mar-89	28-Mar-31	67.5
M24/302	Live	PADDINGTON GOLD PTY LIMITED	MT PLEASANT	21 Years (Renew ed)	08-Dec-89	07-Dec-31	956
M24/303	Live	PADDINGTON GOLD PTY LIMITED	MT PLEASANT	21 Years (Renew ed)	08-Dec-89	07-Dec-31	960
M24/304	Live	PADDINGTON GOLD PTY LIMITED	MT PLEASANT	21 Years (Renew ed)	28-Mar-90	27-Mar-32	703
M24/321	Live	PADDINGTON GOLD PTY LIMITED	MT PLEASANT	21 Years (Renew ed)	31-Jul-89	30-Jul-31	9,886
M24/333	Live	PADDINGTON GOLD PTY LIMITED	LADY BOUNTIFUL EXT'D	21 Years (Renew ed)	30-Nov-89	29-Nov-31	427
M24/357	Live	PADDINGTON GOLD PTY LIMITED	LADY BOUNTIFUL EXT'D	21 Years (Renew ed)	19-Apr-90	18-Apr-32	120
M24/363	Live	PADDINGTON GOLD PTY LIMITED	MT PLEASANT	21 Years (Renew ed)	17-Sep-90	16-Sep-32	7.8
M24/387	Live	PADDINGTON GOLD PTY LIMITED	GRANTS PATCH	21 Years (Renew ed)	15-Oct-91	14-Oct-33	58.52
M24/390	Live	PADDINGTON GOLD PTY LIMITED	MT PLEASANT	21 Years (Renew ed)	31-Jan-92	30-Jan-34	880
M24/393	Live	PADDINGTON GOLD PTY LIMITED	MT PLEASANT	21 Years (Renew ed)	24-Nov-92	23-Nov-34	974
M24/397	Live	PADDINGTON GOLD PTY LIMITED	PADDINGTON OPS	21 Years (Renew ed)	28-Jan-93	27-Jan-35	810
M24/398	Live	PADDINGTON GOLD PTY LIMITED	PADDINGTON OPS	21 Years (Renew ed)	28-Jan-93	27-Jan-35	870
M24/401	Live	PADDINGTON GOLD PTY LIMITED	MT PLEASANT REGIONAL	21 Years (Renew ed)	15-Jan-93	14-Jan-35	240
M24/402	Live	PADDINGTON GOLD PTY LIMITED	LADY BOUNTIFUL EXT'D	21 Years (Renew ed)	15-Jan-93	14-Jan-35	276
M24/403	Live	PADDINGTON GOLD PTY LIMITED	MT PLEASANT	21 Years (Renew ed)	15-Jan-93	14-Jan-35	592
M24/411	Live	PADDINGTON GOLD PTY LIMITED	MT PLEASANT REGIONAL	21 Years (Renew ed)	18-Mar-93	17-Mar-35	45
M24/416	Live	PADDINGTON GOLD PTY LIMITED	MT PLEASANT REGIONAL	21 Years	27-Aug-93	26-Aug-14	201
M24/417	Live	PADDINGTON GOLD PTY LIMITED	MT PLEASANT REGIONAL	21 Years	07-Sep-93	06-Sep-14	158
M24/421	Live	PADDINGTON GOLD PTY LIMITED	MT PLEASANT REGIONAL	21 Years	01-Nov-93	31-Oct-14	200
M24/422	Live	PADDINGTON GOLD PTY LIMITED	PADDINGTON	21 Years	15-Jun-94	14-Jun-15	188
M24/423	Live	PADDINGTON GOLD PTY LIMITED	MT PLEASANT REGIONAL	21 Years	18-Mar-94	17-Mar-15	135
M24/425	Live	PADDINGTON GOLD PTY LIMITED	PADDINGTON OPS	21 Years	22-Dec-94	21-Dec-15	66
M24/426	Live	PADDINGTON GOLD PTY LIMITED	MT PLEASANT REGIONAL	21 Years	30-Mar-94	29-Mar-15	568
M24/428	Live	PADDINGTON GOLD PTY LIMITED	MT PLEASANT REGIONAL	21 Years	25-Mar-94	24-Mar-15	183
M24/430	Live	PADDINGTON GOLD PTY LIMITED	W/KAL (GRANTS PATCH)	21 Years	02-Jun-94	01-Jun-15	355
M24/432	Live	PADDINGTON GOLD PTY LIMITED	LADY BOUNTIFUL EXT'D	21 Years	29-Apr-94	28-Apr-15	6.7
M24/433	Live	PADDINGTON GOLD PTY LIMITED	MT PLEASANT	21 Years	18-Mar-94	17-Mar-15	8.3985
M24/437	Live	NORTON GOLD FIELDS LIMITED	PADDINGTON	21 Years	14-Feb-95	13-Feb-16	9.5
M24/444	Live	BORDER RESOURCES NL PADDINGTON GOLD PTY LIMITED	MT PSANT BORDER	21 Years	04-Oct-94	03-Oct-15	996
M24/445	Live	BORDER RESOURCES NL PADDINGTON GOLD PTY LIMITED	MT PSANT BORDER	21 Years	04-Oct-94	03-Oct-15	934
M24/446	Live	BORDER RESOURCES NL PADDINGTON GOLD PTY LIMITED	MT PSANT BORDER	21 Years	04-Oct-94	03-Oct-15	773
M24/447	Live	BORDER RESOURCES NL PADDINGTON GOLD PTY LIMITED	MT PSANT BORDER	21 Years	04-Oct-94	03-Oct-15	958
M24/455	Live	PADDINGTON GOLD PTY LIMITED	MT PLEASANT REGIONAL	21 Years	21-Dec-94	20-Dec-15	119
M24/473	Live	CLAUSSEN, Allan Frank	PADDINGTON	21 Years	21-May-99	20-May-20	18.8
M24/475	Live	HARMONY GOLD OPERATIONS LIMITED GOLD DUST HOLDINGS PTY LTD	MT PLEASANT REGIONAL	21 Years	07-Aug-01	06-Aug-22	377
M24/476	Live	PADDINGTON GOLD PTY LIMITED	MT PLEASANT REGIONAL	21 Years	07-Aug-01	06-Aug-22	19
M24/477	Live	PADDINGTON GOLD PTY LIMITED	MT PLEASANT REGIONAL	21 Years	30-Aug-01	29-Aug-22	86
M24/478	Live	PADDINGTON GOLD PTY LIMITED	MT PLEASANT REGIONAL	21 Years	07-Aug-01	06-Aug-22	938
M24/494	Live	PADDINGTON GOLD PTY LIMITED	W/KAL (GRANTS PATCH)	21 Years	17-Jun-98	16-Jun-19	326.659
M24/497	Live	NORTON GOLD FIELDS LIMITED	PADDINGTON OPS	21 Years	21-May-99	20-May-20	46.85
M24/500	Live	PADDINGTON GOLD PTY LIMITED	MT PLEASANT REGIONAL	21 Years	07-Aug-01	06-Aug-22	937
M24/501	Live	PADDINGTON GOLD PTY LIMITED	MT PLEASANT REGIONAL	21 Years	07-Aug-01	06-Aug-22	899
M24/557	Live	PADDINGTON GOLD PTY LIMITED	PADDINGTON OPS	21 Years	24-Oct-97	23-Oct-18	601.5
M24/564	Live	PADDINGTON GOLD PTY LIMITED	GOLDEN CITIES	21 Years	04-Nov-97	03-Nov-18	543
M24/565	Live	PADDINGTON GOLD PTY LIMITED	GOLDEN CITIES	21 Years	04-Nov-97	03-Nov-18	601
M24/60	Live	PADDINGTON GOLD PTY LIMITED	MT PLEASANT	21 Years (Renew ed)	26-Aug-85	25-Aug-27	10
M24/616	Live	PADDINGTON GOLD PTY LIMITED	GOLDEN CITIES	21 Years	19-Feb-98	18-Feb-19	980
M24/617	Live	PADDINGTON GOLD PTY LIMITED	MT PLEASANT	21 Years	13-Nov-02	12-Nov-23	8
M24/618	Live	PADDINGTON GOLD PTY LIMITED	MT PLEASANT	21 Years	07-Jun-07	06-Jun-28	692

Table 11: Tenement Listing (Cont.)

Tenement	Status	Holders	Project	Term	Grant Date	Expiry	Area (Ha)
M24/620	Live	PADDINGTON GOLD PTY LIMITED	MT PLEASANT REGIONAL	21 Years	13-Sep-02	12-Sep-23	99
M24/627	Live	PADDINGTON GOLD PTY LIMITED	MT PLEASANT REGIONAL	21 Years	30-Sep-99	29-Sep-20	885
M24/645	Live	PADDINGTON GOLD PTY LIMITED	MT PLEASANT	21 Years	22-Aug-08	21-Aug-29	589
M24/677	Live	PADDINGTON GOLD PTY LIMITED	PADDINGTON OPS	21 Years	22-Aug-08	21-Aug-29	16.968
M24/687	Live	PADDINGTON GOLD PTY LIMITED	PADDINGTON OPS	21 Years	23-Apr-10	22-Apr-31	4.4
M24/688	Live	PADDINGTON GOLD PTY LIMITED	MT PLEASANT REGIONAL	21 Years	30-Sep-99	29-Sep-20	886
M24/703	Live	PADDINGTON GOLD PTY LIMITED	PADDINGTON REGIONAL	21 Years	23-Apr-10	22-Apr-31	8
M24/705	Live	PADDINGTON GOLD PTY LIMITED XSTATE RESOURCES LIMITED	MT PLEASANT	21 Years	09-Jul-99	08-Jul-20	5
M24/708	Live	PADDINGTON GOLD PTY LIMITED	MT PLEASANT	21 Years	30-Dec-99	29-Dec-20	15
M24/709	Live	PADDINGTON GOLD PTY LIMITED	MT PLEASANT	21 Years	30-Jun-99	29-Jun-20	4
M24/710	Live	PADDINGTON GOLD PTY LIMITED	MT PLEASANT	21 Years	21-Jun-99	20-Jun-20	8
M24/711	Live	PADDINGTON GOLD PTY LIMITED	GREATER ORA BANDA	21 Years	11-Aug-99	10-Aug-20	6
M24/712	Live	PADDINGTON GOLD PTY LIMITED	GREATER ORA BANDA	21 Years	14-Mar-00	13-Mar-21	20
M24/716	Live	PADDINGTON GOLD PTY LIMITED	PADDINGTON	21 Years	11-Aug-99	10-Aug-20	3
M24/721	Live	BORDER RESOURCES NL PADDINGTON GOLD PTY LIMITED	MT PSANT BORDER	21 Years	02-Aug-11	01-Aug-32	931
M24/730	Live	BORDER RESOURCES NL PADDINGTON GOLD PTY LIMITED	MT PSANT BORDER	21 Years	02-Aug-11	01-Aug-32	200
M24/746	Live	BORDER RESOURCES NL PADDINGTON GOLD PTY LIMITED	MT PSANT BORDER	21 Years	03-Aug-11	02-Aug-32	4
M24/753	Live	PADDINGTON GOLD PTY LIMITED	GOLDEN CITIES	21 Years	23-Apr-10	22-Apr-31	61
M24/78	Live	VISIONED GROUP LIMITED	PADDINGTON REGIONAL	21 Years (Renew ed)	16-Dec-85	15-Dec-27	165.6
M24/79	Live	PADDINGTON GOLD PTY LIMITED	MT PLEASANT	21 Years (Renew ed)	28-Jan-87	27-Jan-29	9.6
M24/790	Live	PADDINGTON GOLD PTY LIMITED	PADDINGTON OPS	21 Years	23-Apr-10	22-Apr-31	8.8
M24/791	Live	PADDINGTON GOLD PTY LIMITED	PADDINGTON OPS	21 Years	23-Apr-10	22-Apr-31	1
M24/793	Live	PADDINGTON GOLD PTY LIMITED	PADDINGTON REGIONAL	21 Years	23-Apr-10	22-Apr-31	36
M24/794	Live	PADDINGTON GOLD PTY LIMITED	PADDINGTON REGIONAL	21 Years	23-Apr-10	22-Apr-31	51
M24/796	Live	NORTON GOLD FIELDS LIMITED	BIG MAC	21 Years	11-Apr-03	10-Apr-24	114
M24/80	Live	PADDINGTON GOLD PTY LIMITED	MT PLEASANT	21 Years (Renew ed)	12-Feb-86	11-Feb-28	4.5
M24/809	Live	PADDINGTON GOLD PTY LIMITED	GREATER ORA BANDA	21 Years	20-Mar-01	19-Mar-22	10
M24/81	Live	PADDINGTON GOLD PTY LIMITED	MT PLEASANT	21 Years (Renew ed)	12-Feb-86	11-Feb-28	37.86
M24/810	Live	PADDINGTON GOLD PTY LIMITED	MT PLEASANT	21 Years	20-Mar-01	19-Mar-22	4
M24/811	Live	PADDINGTON GOLD PTY LIMITED	MT PLEASANT	21 Years	20-Mar-01	19-Mar-22	6
M24/82	Live	PADDINGTON GOLD PTY LIMITED	MT PLEASANT	21 Years (Renew ed)	12-Feb-86	11-Feb-28	82.66
M24/829	Live	PADDINGTON GOLD PTY LIMITED	GOLDEN CITIES	21 Years	23-Apr-10	22-Apr-31	327
M24/838	Live	PADDINGTON GOLD PTY LIMITED	MT PLEASANT	21 Years	23-Apr-10	22-Apr-31	5
M24/861	Live	NORTON GOLD FIELDS LIMITED	PADDINGTON	21 Years	30-Nov-01	29-Nov-22	7.3
M24/862	Live	PADDINGTON GOLD PTY LIMITED	LADY BOUNTIFUL EXT'D	21 Years	03-Sep-07	02-Sep-28	113.09
M24/876	Live	VISIONED GROUP LIMITED	PADDINGTON REGIONAL	21 Years	22-Oct-03	21-Oct-24	5
M24/881	Live	BORDER RESOURCES NL PADDINGTON GOLD PTY LIMITED	MT PSANT BORDER	21 Years	02-Aug-11	01-Aug-32	899
M24/882	Live	BORDER RESOURCES NL PADDINGTON GOLD PTY LIMITED	MT PSANT BORDER	21 Years	02-Aug-11	01-Aug-32	838
M26/115	Live	BELLAMEL MINING PTY LTD	Binduli	21 Years (Renew ed)	17-Mar-87	16-Mar-29	925.35
M26/235	Live	SANDHURST MINING NL NORTON GOLD FIELDS LIMITED	LAKE GIDJI	21 Years (Renew ed)	19-Apr-90	18-Apr-32	678
M26/243	Live	BELLAMEL MINING PTY LTD	Binduli	21 Years (Renew ed)	12-Jun-90	11-Jun-32	227.5
M26/387	Live	BELLAMEL MINING PTY LTD	Binduli	21 Years (Renew ed)	11-Dec-92	10-Dec-34	120
M26/420	Live	BELLAMEL MINING PTY LTD	Binduli	21 Years	17-Sep-93	16-Sep-14	120
M26/430	Live	BELLAMEL MINING PTY LTD	Binduli	21 Years	25-Oct-93	24-Oct-14	130.55
M26/445	Live	BELLAMEL MINING PTY LTD	BLACK CAT WELL	21 Years	20-Jan-95	19-Jan-16	207.2
M26/446	Live	NORTON GOLD FIELDS LIMITED	JANET IVEY JV	21 Years	30-Nov-94	29-Nov-15	480
M26/447	Live	BELLAMEL MINING PTY LTD	Binduli	21 Years	25-Jan-95	24-Jan-16	869
M26/468	Live	BELLAMEL MINING PTY LTD	Binduli	21 Years	04-Nov-97	03-Nov-18	809
M26/474	Live	BELLAMEL MINING PTY LTD	Binduli	21 Years	04-Nov-97	03-Nov-18	893.55
M26/566	Live	NORTON GOLD FIELDS LIMITED	LAKE GIDJI	21 Years	13-Aug-07	12-Aug-28	26.3
M26/587	Live	MOTO GOLDMINES AUSTRALIA LIMITED PADDINGTON GOLD PTY LIMITED	MT PSANT BORDER	21 Years	03-Aug-11	02-Aug-32	331
M26/629	Live	BELLAMEL MINING PTY LTD	Binduli	21 Years	20-Nov-00	19-Nov-21	295.087
M26/679	Live	BORDER RESOURCES NL PADDINGTON GOLD PTY LIMITED	MT PSANT BORDER	21 Years	02-Aug-11	01-Aug-32	753
M26/816	Live	NORTON GOLD FIELDS LIMITED	KALGOORLIE SMELTER	21 Years	15-Jul-10	14-Jul-31	561

Table 11: Tenement Listing (Cont.)

Tenement	Status	Holders	Project	Term	Grant Date	Expiry	Area (Ha)
M26/833	Pending	NORTON GOLD FIELDS LIMITED	PADDINGTON				
M27/149	Live	NORTON GOLD FIELDS LIMITED	MULGARIE	21 Years (Renew ed)	29-May-90	28-May-32	55
M27/171	Live	NORTON GOLD FIELDS LIMITED	MULGARIE	21 Years	07-Nov-94	06-Nov-15	115
M27/178	Live	NORTON GOLD FIELDS LIMITED	MULGARIE	21 Years	29-Dec-93	28-Dec-14	7
M27/185	Live	NORTON GOLD FIELDS LIMITED	MULGARIE	21 Years	18-Jan-95	17-Jan-16	824
M27/246	Live	NORTON GOLD FIELDS LIMITED	REIDY SWAMP	21 Years	06-Dec-12	05-Dec-33	1000
M27/247	Live	NORTON GOLD FIELDS LIMITED	REIDY SWAMP	21 Years	06-Dec-12	05-Dec-33	1000
M27/339	Live	NORTON GOLD FIELDS LIMITED	MULGARIE	21 Years	07-Dec-12	06-Dec-33	778
M27/340	Live	NORTON GOLD FIELDS LIMITED	MULGARIE	21 Years	07-Dec-12	06-Dec-33	705
M27/38	Live	NORTON GOLD FIELDS LIMITED	MULGARIE	21 Years (Renew ed)	16-Dec-86	15-Dec-28	109.74
M27/435	Live	NORTON GOLD FIELDS LIMITED	MULGARIE	21 Years	06-Dec-12	05-Dec-33	297
M27/436	Live	NORTON GOLD FIELDS LIMITED	MULGARIE	21 Years	06-Dec-12	05-Dec-33	634
M27/437	Live	NORTON GOLD FIELDS LIMITED	MULGARIE	21 Years	06-Dec-12	05-Dec-33	746
P16/2000	Live	PADDINGTON GOLD PTY LIMITED	CARBINE ZULEIKA	4 Years	02-Jul-10	01-Jul-14	121
P16/2001	Live	PADDINGTON GOLD PTY LIMITED	CARBINE ZULEIKA	4 Years	02-Jul-10	01-Jul-14	121
P16/2002	Live	PADDINGTON GOLD PTY LIMITED	CARBINE ZULEIKA	4 Years	02-Jul-10	01-Jul-14	121
P16/2003	Live	PADDINGTON GOLD PTY LIMITED	CARBINE ZULEIKA	4 Years	02-Jul-10	01-Jul-14	70
P16/2473	Live	PADDINGTON GOLD PTY LIMITED	CARBINE EAST (CB ZL)	4 Years (Extended)	24-Sep-08	23-Sep-16	121.4
P16/2474	Live	PADDINGTON GOLD PTY LIMITED	CARBINE EAST (CB ZL)	4 Years (Extended)	24-Sep-08	23-Sep-16	165.18
P16/2477	Live	PADDINGTON GOLD PTY LIMITED	CARBINE EAST (CB ZL)	4 Years (Extended)	07-Apr-09	06-Apr-17	161.02
P16/2478	Live	PADDINGTON GOLD PTY LIMITED	CARBINE EAST (CB ZL)	4 Years (Extended)	30-Sep-08	29-Sep-16	200
P16/2700	Live	KALGOORLIE MINING COMPANY (BULLANT) PTY LTD	CARBINE ZULEIKA	4 Years	01-Jul-11	30-Jun-15	181
P16/2701	Live	KALGOORLIE MINING COMPANY (BULLANT) PTY LTD	CARBINE ZULEIKA	4 Years	01-Jul-11	30-Jun-15	172
P16/2857	Pending	PADDINGTON GOLD PTY LIMITED	PADDINGTON				
P16/2858	Pending	PADDINGTON GOLD PTY LIMITED	PADDINGTON				
P16/2859	Pending	PADDINGTON GOLD PTY LIMITED	PADDINGTON				
P16/2860	Pending	PADDINGTON GOLD PTY LIMITED	PADDINGTON				
P24/4128	Live	PADDINGTON GOLD PTY LIMITED	W/KAL (GRANTS PATCH)	4 Years (Extended)	25-Feb-09	24-Feb-17	50
P24/4253	Live	PADDINGTON GOLD PTY LIMITED	PADDINGTON OPS	4 Years (Extended)	14-Aug-08	13-Aug-16	1.9815
P24/4255	Live	PADDINGTON GOLD PTY LIMITED	MT PLEASANT REGIONAL	4 Years (Extended)	21-Aug-08	20-Aug-16	135
P24/4256	Live	PADDINGTON GOLD PTY LIMITED	MT PLEASANT REGIONAL	4 Years (Extended)	28-May-08	27-May-16	160
P24/4257	Live	PADDINGTON GOLD PTY LIMITED	MT PLEASANT REGIONAL	4 Years (Extended)	28-May-08	27-May-16	115
P24/4258	Live	PADDINGTON GOLD PTY LIMITED	MT PLEASANT REGIONAL	4 Years (Extended)	28-May-08	27-May-16	22
P24/4260	Live	PADDINGTON GOLD PTY LIMITED	MT PLEASANT REGIONAL	4 Years (Extended)	21-Aug-08	20-Aug-16	63
P24/4588	Live	KALGOORLIE MINING COMPANY (BULLANT) PTY LTD	GRANTS PATCH	4 Years	13-Mar-12	12-Mar-16	162
P24/4589	Live	KALGOORLIE MINING COMPANY (BULLANT) PTY LTD	CARBINE ZULEIKA	4 Years	13-Mar-12	12-Mar-16	187
P24/4590	Live	KALGOORLIE MINING COMPANY (BULLANT) PTY LTD	CARBINE ZULEIKA	4 Years	13-Mar-12	12-Mar-16	200
P24/4591	Live	KALGOORLIE MINING COMPANY (BULLANT) PTY LTD	CARBINE ZULEIKA	4 Years	13-Mar-12	12-Mar-16	200
P24/4592	Live	KALGOORLIE MINING COMPANY (BULLANT) PTY LTD	CARBINE ZULEIKA	4 Years	13-Mar-12	12-Mar-16	196
P24/4593	Live	KALGOORLIE MINING COMPANY (BULLANT) PTY LTD	CARBINE ZULEIKA	4 Years	13-Mar-12	12-Mar-16	48
P24/4594	Live	KALGOORLIE MINING COMPANY (BULLANT) PTY LTD	CARBINE ZULEIKA	4 Years	13-Mar-12	12-Mar-16	138
P26/3564	Live	BELLAMEL MINING PTY LTD	Binduli	4 Years (Extended)	21-Apr-09	20-Apr-17	74
P26/3566	Live	BELLAMEL MINING PTY LTD	Binduli	4 Years (Extended)	21-Apr-09	20-Apr-17	100
P26/3567	Live	BELLAMEL MINING PTY LTD	Binduli	4 Years	16-Mar-11	15-Mar-15	109
P26/3609	Live	NORTON GOLD FIELDS LIMITED	JANET IVEY JV	4 Years (Extended)	14-Aug-08	13-Aug-16	38
P26/3611	Live	NORTON GOLD FIELDS LIMITED	LAKE GIDJI	4 Years (Extended)	14-Aug-08	13-Aug-16	193
P26/3612	Live	NORTON GOLD FIELDS LIMITED	LAKE GIDJI	4 Years (Extended)	14-Aug-08	13-Aug-16	195
P26/3613	Live	NORTON GOLD FIELDS LIMITED	LAKE GIDJI	4 Years (Extended)	14-Aug-08	13-Aug-16	118
P26/3629	Live	BELLAMEL MINING PTY LTD	Binduli	4 Years (Extended)	17-Nov-08	16-Nov-16	191
P26/3630	Live	BELLAMEL MINING PTY LTD	Binduli	4 Years (Extended)	17-Nov-08	16-Nov-16	200
P26/3631	Live	BELLAMEL MINING PTY LTD	Binduli	4 Years (Extended)	17-Nov-08	16-Nov-16	145
P26/3632	Live	BELLAMEL MINING PTY LTD	Binduli	4 Years (Extended)	17-Nov-08	16-Nov-16	147
P27/1873	Live	NORTON GOLD FIELDS LIMITED	ALLEN WEST	4 Years (Extended)	22-Jan-10	21-Jan-18	200

Corporate Directory

Board & Senior Management

Jinghe Chen

Non-Executive Chairman

Dianmin Chen

Managing Director
& Chief Executive Officer

Anne Bi

Non-executive Director

Xuelin Cai

Non-executive Director

Noel White

Non-executive Director

Terry Moylan

General Manager Projects &
Business Development

Steven Phan

Chief Financial Officer

Peter Ruzicka

General Manager Geology

Guy Simpson

General Manager Technical
Services

Cullum Winn

General Manager Paddington
Operations

Company Secretary

Richard Jones

General Counsel / Company
Secretary

Media Relations

Warrick Hazeldine / Annette Ellis
Purple Communications
Tel: +61 (8) 6314 6300

Share Capital

931,850,665 million ordinary
shares

Presentation and Rounding

Unless stated otherwise, all
dollars shown are Australian
dollars.

YTD

YTD means 2014 calendar year
to date

Competent Persons Statement

The information in this report that relates to Mineral Resources is based on information compiled by Peter Ruzicka and Andrew Bewsher. The information in this report that relates to Mineral Reserves is compiled by Guy Simpson and Elizabeth Jones. Exploration drilling results have been compiled by Peter Ruzicka. In some instances material relating to historical resource models is reported, these models have been reviewed and validated by Peter Ruzicka.

Peter Ruzicka, Guy Simpson and Elizabeth Jones are all members of the Australasian Institute of Mining and Metallurgy and full-time employees of Norton Gold Fields Limited. Andrew Bewsher is a member of the Australian Institute of Geoscientists and a full-time employee of BM Geological Services PL, a consulting group to Norton Gold Fields Limited.

Guy Simpson, Elizabeth Jones, Peter Ruzicka and Andrew Bewsher all have sufficient experience relevant to the styles of mineralisation and types of deposits which are covered in this report, and to the activity which they are undertaking to qualify as Competent Persons as defined in the 2012 edition of the 'Australasian Code for Reporting of Exploration Results, Mineral Resources and Ore Reserves'. Guy Simpson, Elizabeth Jones, Peter Ruzicka and Andrew Bewsher all consent to the inclusion in this report of matters based on their information in the form and context in which it appears.

Mount Morgan Project

The information in this report that relates to Mineral Resources of the Mount Morgan Mine project was prepared in accordance with the 2004 Edition of the 'Australasian Code for Reporting of Exploration Results, Mineral Resources and Ore Reserves' ('JORC Code') by Troy Lowien, Senior Resource Geologist, of Polymetals Mining Limited, who is a Member of The Australian Institute of Mining and Metallurgy ('AUSIMM') and has a minimum of five years of experience in the estimation, assessment and evaluation of Mineral Resources of this style and is the Competent Person as defined in the JORC Code. Troy Lowien conducted the geological modelling, statistical analysis, variography, grade estimation and report preparation. This report accurately summarises and fairly reports his estimations and he has consented to the resource report in the form and context in which it appears. This information was prepared and first disclosed under the JORC Code 2004. It has not been updated since to comply with the JORC Code 2012 on the basis that the information has not materially changed since it was last reported.

Paddington Reserve and Resource statement (gold) as at 31 December 2013

Reserve	Mt	g/t	Moz
Proven	1.32	1.49	0.06
Probable	17.7	1.77	1.01
Total	19.0	1.75	1.07

Resource	Mt	g/t	Moz
Measured	2.61	1.61	0.13
Indicated	73.9	1.41	3.35
Inferred	57.6	1.86	3.46
Total	134.2	1.61	6.94

Mount Morgan Resource statement (gold) as at 31 December 2012

	Mt	g/t	Moz
Indicated	2.487	1.59	0.127
Inferred	5.861	1.07	0.199
Total	8.348	1.23	0.326

Principal Office

Level 36, Exchange Plaza
2 The Esplanade, Perth WA 6000
Australia

Tel +61 (0) 8 9263 9700

Fax +61 (0) 8 9263 9777

Postal Address

PO Box 5762
St Georges Terrace
PERTH WA 6831
Australia

www.nortongoldfields.com.au

Share Registry

Link Market Services
Level 15, 324 Queen Street
Brisbane Qld 4000

Tel 1300 554 474 (within Australia)

Tel +61 1300 554 474 (overseas)

Please direct shareholding
enquiries to the share registry