



22 APRIL 2025  
ASX RELEASE

# COSMO COMPLETES ACQUISITION OF BINGARA & NUNDLE GOLD, ANTIMONY & COPPER PROJECTS

## HIGHLIGHTS

- Acquisition of the highly prospective Bingara and Nundle gold – antimony and copper projects in the New England Orogen of northern NSW has been completed
- Implementing exploration strategy with initial on ground activities focused on Bingara
- High-resolution LiDAR and imagery capture completed across both Bingara and Nundle
- Spring Creek prospect at Bingara proposed for maiden drill program to follow up shallow high grade mineralisation identified<sup>1</sup> in previous drilling such as:
  - 6.0m at 6.43 g/t Au from 8.0 m incl. 2.0m at 17.59 g/t Au from 12.0m (SC17 – Spring Creek)
- The projects cover areas of the highest antimony-gold prospectivity in NSW as mapped by the NSW Mines Department, outside of the nearby Larvotto Resources' (ASX:LRV, ~\$340m market cap) globally significant Hillgrove Project

Cosmo Metals Ltd ("Cosmo" or the "Company") (ASX: CMO) is pleased to have completed the acquisition of the highly prospective Bingara and Nundle gold - antimony and copper exploration projects (the **Projects**), totalling an area of ~743km<sup>2</sup>, in the New England Orogen of New South Wales (**NSW**), Australia.

Focus now moves to implementing Cosmo's exploration strategy across the Projects. The previously announced high-density light detection and ranging (**LiDAR**) and high-resolution imagery capture survey to complete full coverage of the Bingara and Nundle tenements is complete. LiDAR provides a highly detailed land surface digital terrain model (**DTM**) mapping historical workings and revealing underlying geological trends and structures. On ground activities are being implemented with an initial focus on key target areas at Bingara.

**Cosmo's Managing Director, Ian Prentice commented:**

*"Cosmo is delighted to complete the acquisition of the Bingara & Nundle Projects and excited to commence our exploration at these underexplored assets which feature several substantial historical mines.*

*The Hidden Treasure – Spring Creek Trend presents compelling first-pass drill targets as a follow-up to previous shallow and high-grade gold drill intercepts. This is just one of many prospects across a 743km<sup>2</sup> land package which is hosted in the New England Orogen, host to many of Australia's most valuable gold, antimony and copper deposits."*

<sup>1</sup> Refer CMO ASX announcement dated 12/02/2025

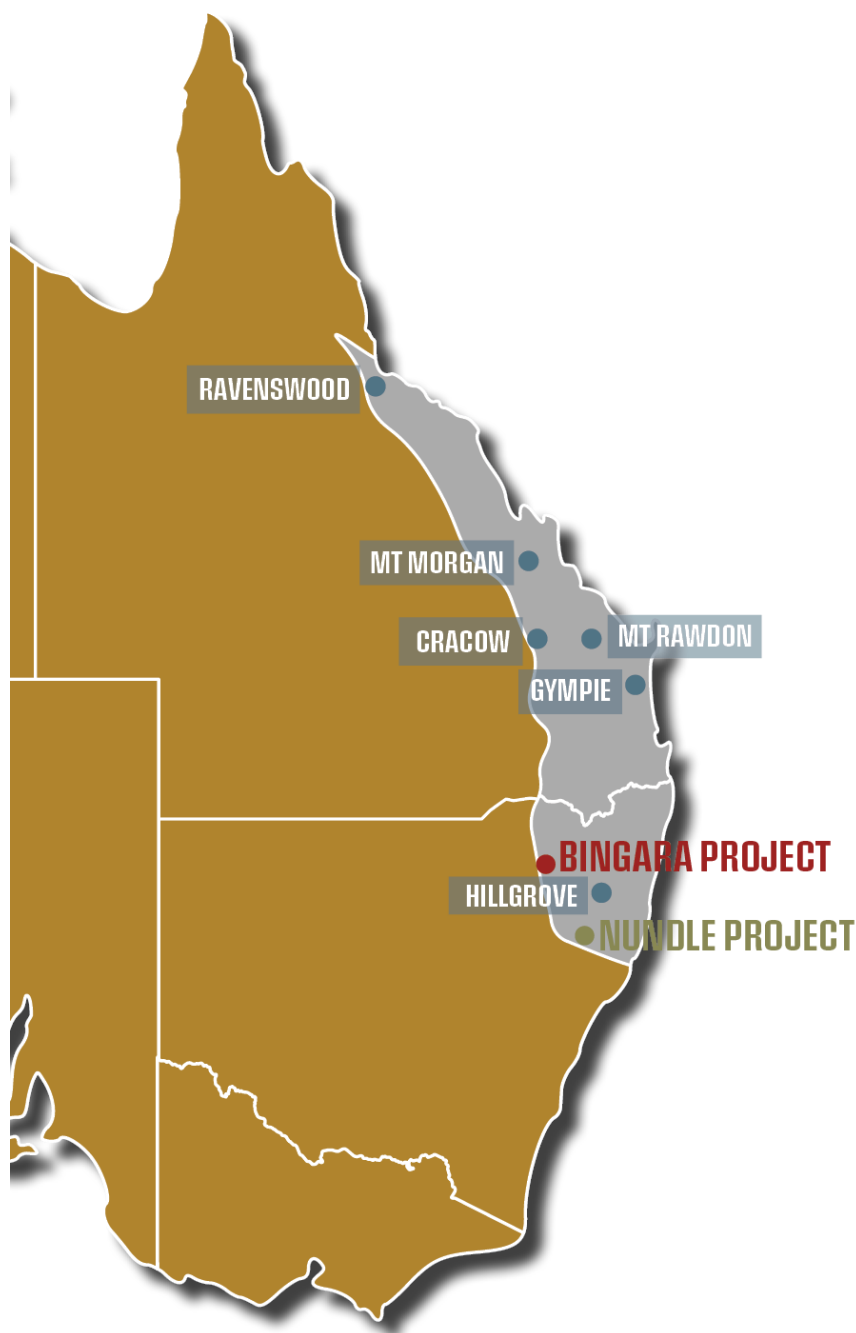
## Cosmo Metals

Level 1, 51 Colin St West Perth  
WA 6005  
[cosmometals.com.au](http://cosmometals.com.au)

**Telephone:** +61 (8) 6400 5301  
**Email:** [admin@cosmometals.com.au](mailto:admin@cosmometals.com.au)  
**ASX:** CMO

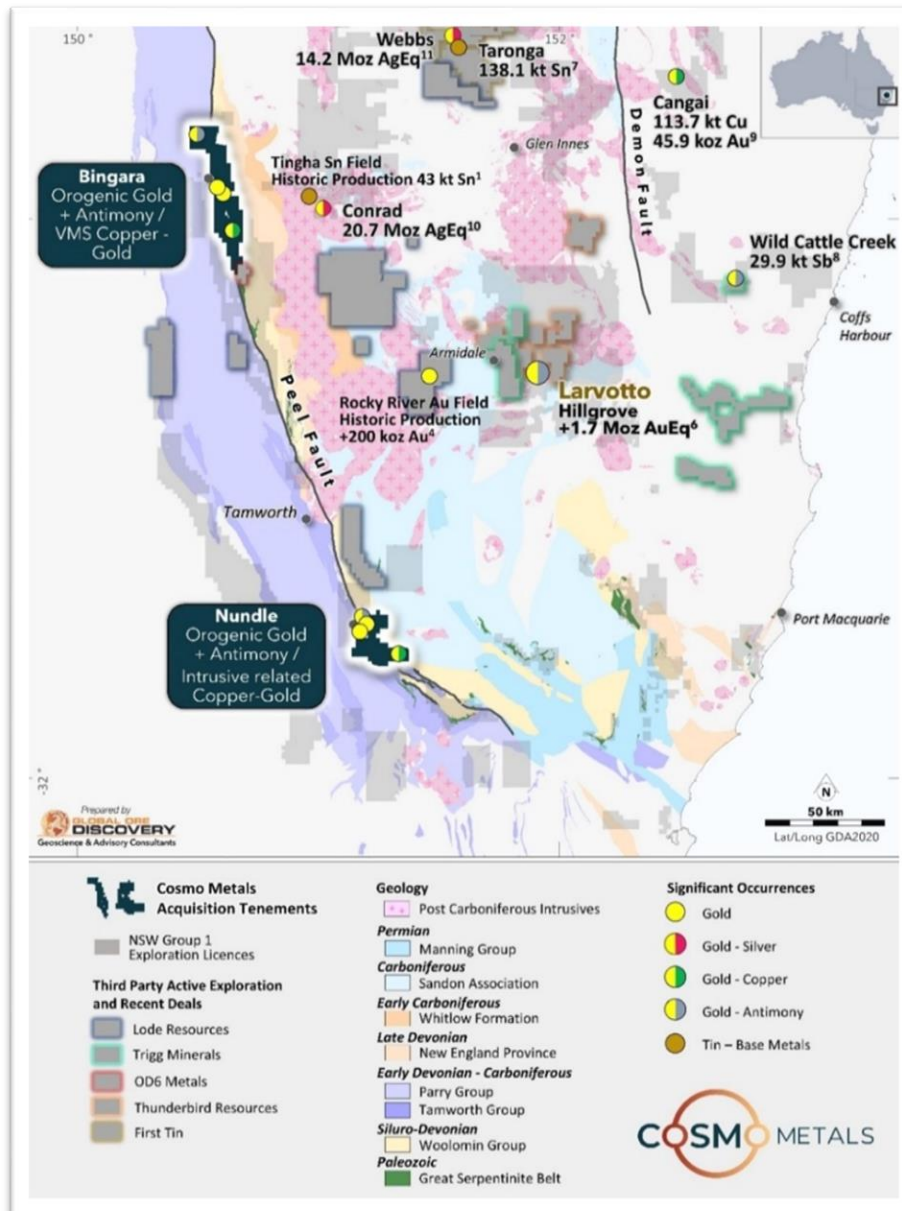
## NSW PROJECT PORTFOLIO

Cosmo has acquired the highly prospective Bingara and Nundle projects totalling an area of ~743km<sup>2</sup>, in the New England Orogen of northern NSW. The New England Orogen, which extends from northern NSW along the eastern coast of Australia up to Townsville in northern Queensland, hosts globally significant orebodies such as the nearby Hillgrove gold-antimony deposit<sup>1</sup> (1.7Moz AuEq) (refer Figure 1) and the Mt Morgan gold-copper deposit in Queensland<sup>2</sup> (historic production of 7.7Moz Au and 361 Kt Cu).



*Figure 1. Project location in New England Orogen*

The Bingara and Nundle Projects represent large, camp scale exploration opportunities with evidence of high grade multi commodity mineralisation and contain an extensive pipeline of highly prospective targets that are either under explored or completely untested with modern, systematic exploration.



*Figure 2. Project location in New England Orogen. See references at the end of the news release for the source of 3<sup>rd</sup> party resource information displayed on the figure.*

## EXPLORATION UNDERWAY

With completion of the acquisition of the Projects Cosmo is implementing its exploration activities as part of a high-impact exploration strategy of these underexplored, high-potential assets.

The high-density light detection and ranging (**LiDAR**) and high-resolution imagery capture survey work has been completed. This survey will provide LiDAR coverage for the first time across the full extent of both Bingara and Nundle.

The LiDAR data will be processed to generate a highly accurate land surface digital terrain model (**DTM**) showing very detailed topographic contours and an accurate 3D land form model mapping features like historical workings that may have been obscured by tree cover / foliage and clearly revealing underlying geological trends and structures. This will be used as a high-quality base layer to enhance the efficiency, and fast track, geological mapping, surface geochemical sampling and design of follow-up drilling to test historic gold exploration results at Bingara and Nundle.



The Cosmo technical team site visit completed during the option period confirmed the surface expression of largely untested mineralised systems at both Bingara and Nundle as well as ground truthing the historic exploration completed by previous explorers at a number of highly prospective target areas. The LiDAR data will assist in identifying potential extensions and/or duplications of these mineralised systems.

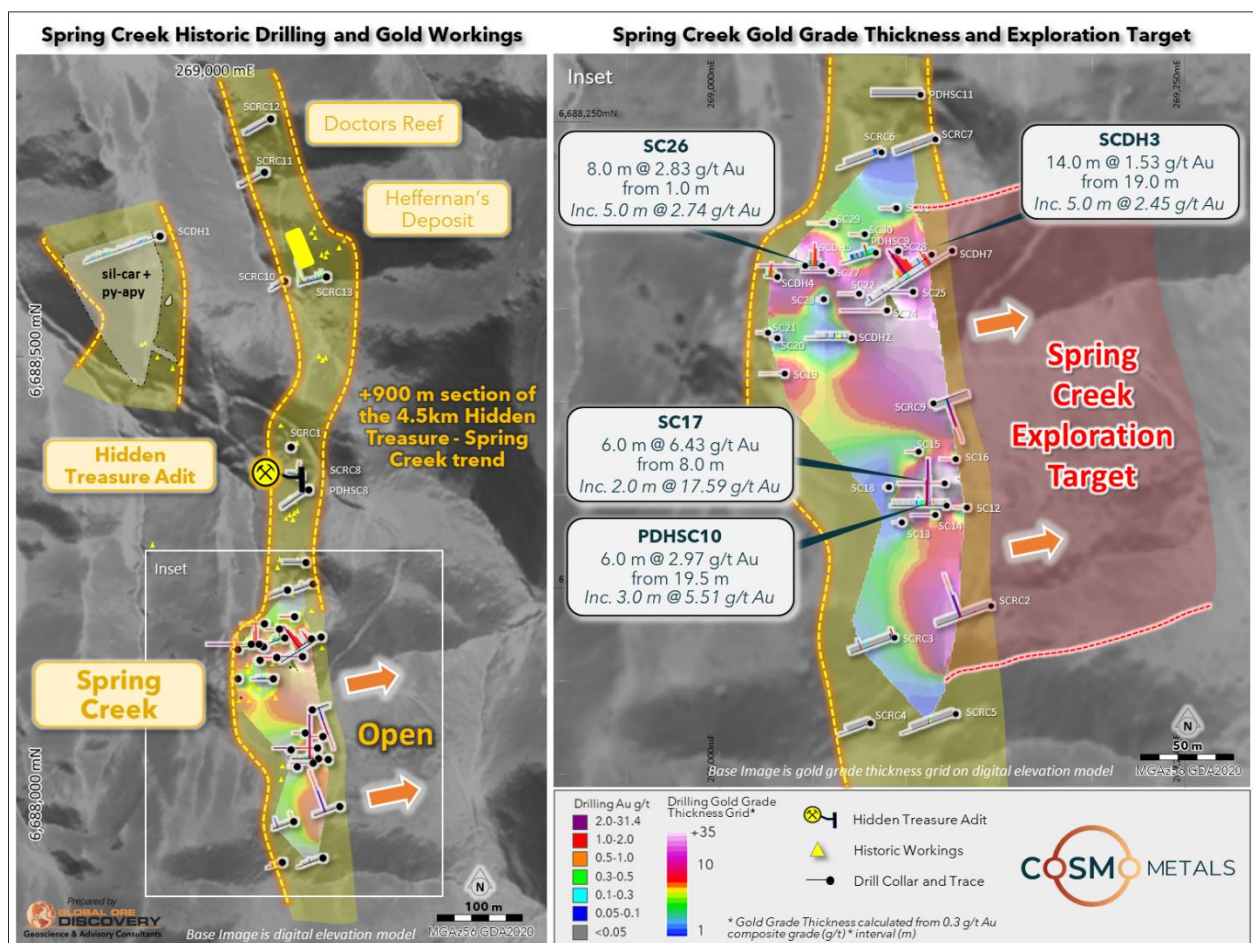
The LiDAR visible band imagery will be particularly valuable for the Folly Line where recent logging of the plantation pine forest has exposed new outcrop over the area of the historic workings.

On ground activities are being implemented to leverage off the high-quality LiDAR data, with an initial focus on key target areas at Bingara.

The Hidden Treasure – Spring Creek Trend is a high priority target area for initial exploration as one area across the Projects that is one area at Bingara that has received several rounds of shallow exploration drilling between 1984 and 1996 (see JORC Table 1). A total of 45 holes were drilled during this period, with 34 of these holes returning assays of between 0.51 g/t and 17.5 g/t Au, with better intersections of:

- **6.0m at 6.43 g/t Au from 8.0m incl 2.0 m at 17.59 g/t Au from 12.0m (SC17)**
- **8.0m at 2.83 g/t Au from 1.0m (SC26)**

Gold mineralisation at Spring Creek is currently defined by drilling over a 350m north south strike (out of the 4.5 km long Hidden Treasure – Spring Creek trend), up to 65m wide zone east west and at a 0.3 g/t Au cut off the mineralised zone is between 1.0 m and 14.0 m thick (Figure 3).



**Figure 3. Hidden Treasure - Spring Creek trend – historic drilling and gold workings**

Figure 3 shows that the majority of historic drilling has been focused on the Spring Creek area with minimal drilling along the remaining strike of the 4.5km Hidden Treasure – Spring Creek trend.

The LiDAR and high-resolution imagery will support the proposed drilling at the Hidden Treasure – Spring Creek gold trend at Bingara, by both assisting in mapping potential strike extensions of known historic workings as well as allowing better definition of optimal drilling locations to confirm and potentially extend the known gold zone.

A geological mapping and sampling program is planned at the Spring Creek area to refine the targeting for the proposed drill program and define controls on mineralisation at it extends beyond the previously drilled area.

An initial phase of geological mapping and rock chip sampling is also proposed for the Evans and Corrigan target in the north west of the Bingara Project. This work is designed to verify the extent of historical workings and potential mineralisation at this prospect, where antimony – gold – tungsten production has been reported.

## ESTIMATED FORWARD WORK PROGRAMS

	Q2 2025	Q3 2025	Q4 2025	Q1 2026
<b>NSW Projects</b>				
Bingara & Nundle (Au/Sb/Cu)	LiDAR Survey			
Bingara – Spring Creek (Au)	Drill Planning & Approvals	Drilling & Results		
Bingara – Evans & Corrigan (Au/Sb)	Mapping / Sampling			
Nundle – Zwiers (Sb)		Mapping / Sampling		
Bingara – Mt Everest (Au/Cu)		Mapping / Sampling		
Nundle – Folly Line (Au/Sb)		Drill Planning & Approvals	Drilling & Results	
Bingara – Mt Lauff (Au/Cu)		Mapping / Sampling		
<b>WA Projects</b>				
Kanowna Gold Project (Au)	Data Analysis & Drill Planning			
Yamarna Region Project (Cu/Co/Ni)	Asset Review			

The **Bingara Project**, covering a contiguous area of 484.1km<sup>2</sup>, contains two sub parallel broadly north south trending mineralised trends that follow the regional scale Peel Fault system (Figure 4).

The Bingara goldfield, defined by a plus 30 km long belt of hard rock gold (antimony) lodes and alluvial workings, were first exploited between 1850 and the 1860's. Antimony production is also reported from the Evans and Corrigan mines in the northwest of the project and mines in the Hidden Treasure – Spring Creek area. Portions of the Bingara goldfield have had limited sporadic historic exploration by numerous companies since the late 1970's. There has been no drilling of the Bingara goldfield since 1996 and areas like the Whitlow Group and Specimen Gully – Lone Hand Trend have never been drill tested.

The Bingara VMS copper-zinc-gold trend extends over a 20 km north-south strike to the east of the Peel Fault and contains six historical Cyprus style VMS Cu-Zn±Au-Ag deposits. At Bingara this belt has seen limited to no systematic surface exploration, modern geophysics or drill testing. Elsewhere in the world, Cyprus style VMS deposits form modest tonnage, high-grade copper-zinc deposits, that can cluster in deposit “camps” and may contain significant gold, as is the case at Bingara

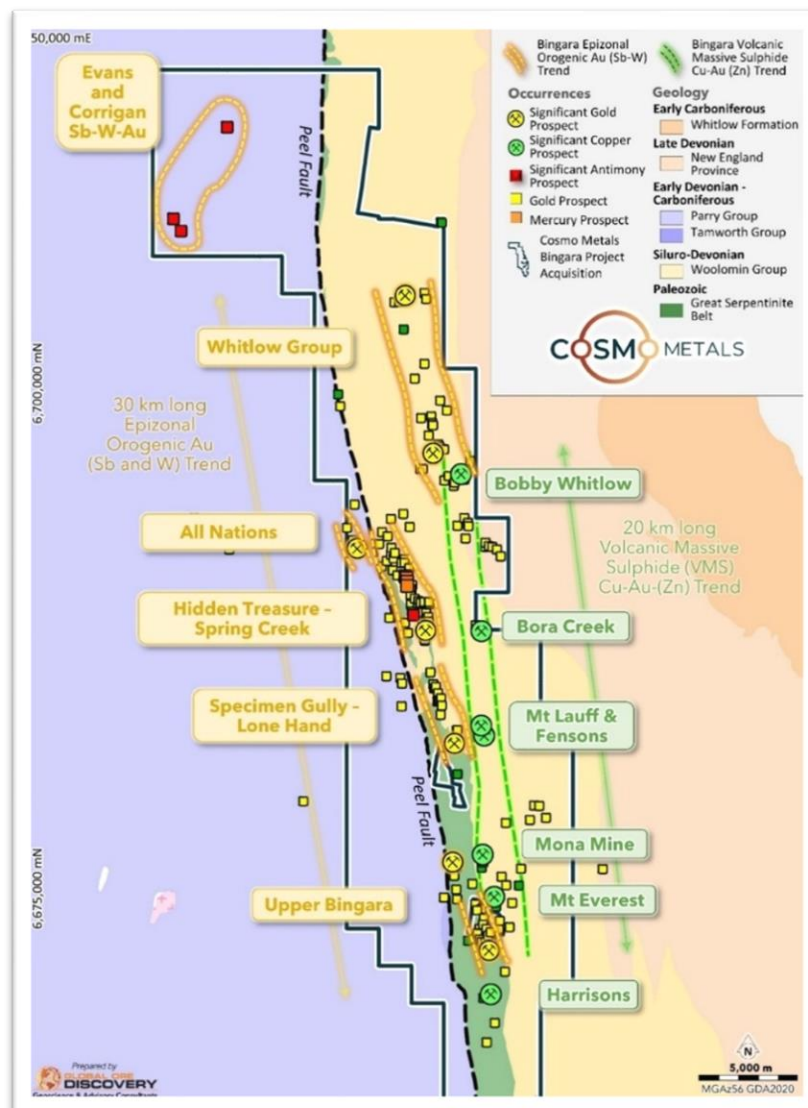


Figure 4. Bingara Project Orogenic Gold (Antimony) Gold Field and VMS Copper-Zinc-Gold Belt.

The **Nundle Project**, covering an area of 259.1km<sup>2</sup> straddling the regional scale Peel Fault contains two key prospective target areas (Figure 5).

A +7.5km long section of the historic Nundle Epizonal Orogenic gold (antimony) field, characterised by steep dipping lodes and stockwork zones with geochemical signatures similar to the Hillgrove gold-antimony (tungsten) mine. The Nundle goldfield was exploited between the 1850's and 1940's, and although total production from Nundle was not well documented, with over 80 individual lodes recorded in the field, production has been estimated to be in excess of 150,000oz of gold<sup>4</sup>.

There are two prospective areas defined within the goldfield within the Nundle Project, the 1.7km long Folly Line parallel to and within the Peel Fault and the Hanging Rock and Tamworth Reefs trend hosted by the Tamworth group sediments and diorite bodies. There is evidence of antimony mineralisation associated with these gold prospects and there is recorded production from the Zwer's Scheelite Mine located 1.7km north of the Folly Line of >4.30 t of Sb<sup>4</sup>.

The Barnard Hut – Back Barb Cu-Au cluster - Intrusion Related copper target area, located in the south east of the Nundle Project, has indications of copper mineralisation based on limited surface exploration completed between 1970 and 1972. The initial phase of trenching work in 1971 included 376 channel samples from trenches that targeted exposed zones of copper mineralisation in the Barnard Hut area, returning strong traces of copper mineralisation over a strike length of approximately 3.2kms. The Barnard Hut prospect is within a regional scale magnetic high anomaly with a north-west trending strike of 4.2km and up to 1.6km wide. Initial work indicates potential for a Mt Morgan style deposit at Barnard Hut.

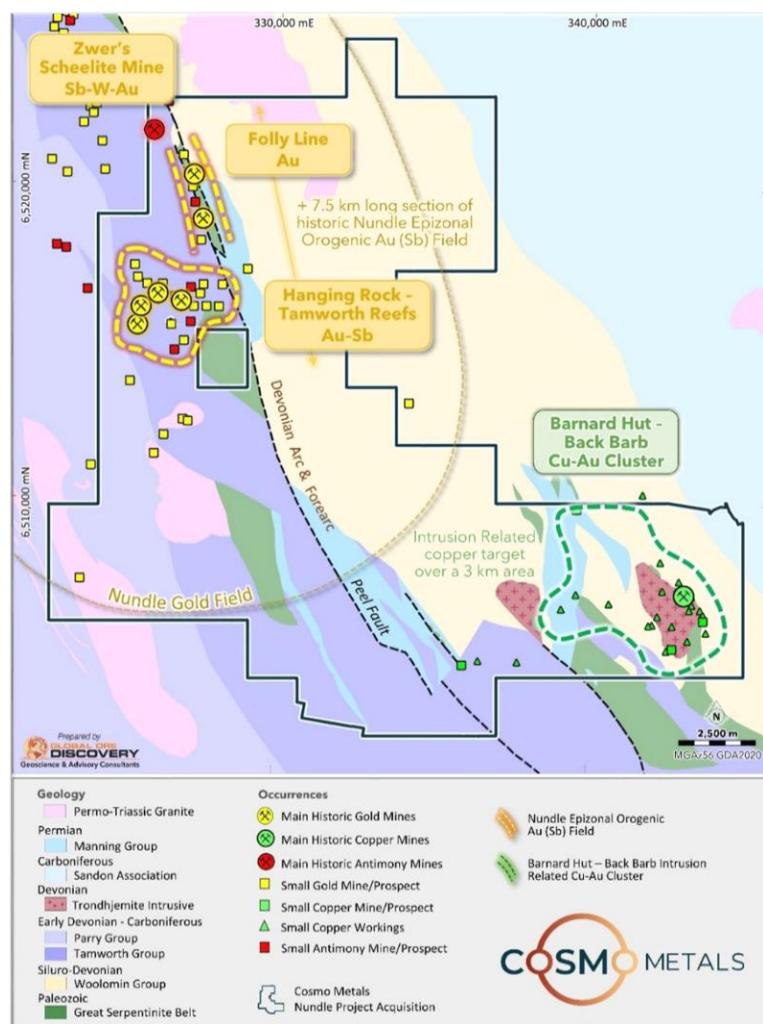


Figure 5. Nundle Project with prospect areas on regional geology

This announcement is authorised for release to the ASX by the Board of Cosmo Metals Ltd.

### CAUTIONARY STATEMENT

According to Listing Rule 3.1, the Company informs investors that visual estimates of mineral abundance included in this release should never be considered a proxy or substitute for laboratory analysis where concentrations or grades are the factor of principal economic interest. Visual estimates also potentially provide no information regarding impurities or deleterious physical properties relevant to valuations.

### For further information please contact:

**Ian Prentice - Managing Director**

**Cosmo Metals**

**Phone** +61 8 6400 5301

**Email:** [admin@cosmometals.com.au](mailto:admin@cosmometals.com.au)

**Website:** [cosmometals.com.au](http://cosmometals.com.au)

 [Follow CMO on LinkedIn](#)

 [Follow CMO on X](#)



## COMPETENT PERSON'S STATEMENT

The information in this announcement that relates to historical results in respect of the Bingara and Nundle projects is based on information compiled by Mr Ian Prentice, who is a Member of the Australasian Institute of Mining and Metallurgy (AusIMM). Mr Prentice is a director of Cosmo Metals. Mr Prentice has sufficient experience which is relevant to the style of mineralisation and type of deposit under consideration and to the activity which he is undertaking to qualify as a Competent Person as defined in the 2012 Edition of the 'Australasian Code for Reporting of Exploration Results, Mineral Resources and Ore Reserves'. Mr Prentice consents to the inclusion in this announcement of the matters based on his information in the form and context in which it appears.

## COMPLIANCE STATEMENT

This announcement contains information on the Bingara and Nundle Projects extracted from the ASX market announcement dated 12 February 2025 and reported by the 2012 edition of the "Australasian Code for Reporting of Exploration Results, Mineral Resources and Ore Reserves" (2012 JORC Code) and available for viewing at [www.cosmometals.com.au](http://www.cosmometals.com.au). This news release contains references to historic exploration results on the Bingara and Nundle projects that was not performed by the company. CMO is in the process of validating this exploration in the context of reporting standards for the 2012 JORC code but has included reference to these results in this news release to inform shareholders as an indication of potential grade and widths of mineralisation at the project.

CMO confirms that it is not aware of any new information or data that materially affects the information included in any original ASX market announcement

## FORWARD LOOKING STATEMENT

This announcement contains 'forward-looking information' that is based on the Company's expectations, estimates and projections as of the date on which the statements were made. This forward-looking information includes, among other things, statements with respect to the Company's business strategy, plans, development, objectives, performance, outlook, growth, cash flow, projections, targets and expectations, mineral reserves and resources, results of exploration and related expenses. Generally, this forward-looking information can be identified by the use of forward-looking terminology such as 'outlook', 'anticipate', 'project', 'target', 'potential', 'likely', 'believe', 'estimate', 'expect', 'intend', 'may', 'would', 'could', 'should', 'scheduled', 'will', 'plan', 'forecast', 'evolve' and similar expressions. Persons reading this announcement are cautioned that such statements are only predictions, and that the Company's actual future results or performance may be materially different. Forward-looking information is subject to known and unknown risks, uncertainties and other factors that may cause the Company's actual results, level of activity, performance or achievements to be materially different from those expressed or implied by such forward-looking information.

## REFERENCES

1. Larvotto Resources (ASX: LRV). Investor Presentation. October 2024. Hillgrove Antimony-Gold Project. IMARC
2. GBM Resources (ASX: GBZ). News Release. 6 Feb, 2023. GBM Terminates the Mt Morgan Au-Cu Project Sale with Smartset Services.
3. Jones, D, A,. Exploration Licence 1876 Upper Bingara First and Final Report. Newmont Holdings Pty. Ltd. 1982. NSW Report ID: R00010547 (GS1982/566)
4. Brown R.E., Brownlow J.W. & Krynen J.P. 1992. Manilla - Narribri 1:250 000 Metallogenic Map SH/56-9, SH/55-12: Metallogenic Study and Mineral Deposit Data Sheets. 319 pp. Geological Survey of New South Wales, Sydney
5. Lynch, J,J,. Report by Nickel Mines Limited on E.L.A 654 Nundle, for Quarterly Report Period Ending 17/3/71, Nickle Mines Limited, 26<sup>th</sup> March 1971. NSW Report ID: R00007939 (GS1971/220)
6. Brown, R,E, & Stroud, W, J,. 1997. Inverell 1:250 000 Metallogenic Map SH/56-5: Metallogenic Study and Mineral Deposit Data Sheets. Geological Survey of New South Wales, Sydney, + 576 pp.
7. Duncan, G,. EL 4662, The Peel fault, NSW, Annual Report for the twelve months ended 11 May 1995. Probe Resources NL. NSW Report ID: R00001067 (GS1996/083)
8. First Tin (LON:1SN). Investor Presentation. 6 Dec, 2024. High Value, Advanced Tin Projects in Australia and Germany. International Tin Association Presentation.
9. Trigg Minerals (ASX: TMG). News Release. 19 Dec, 2024. UPDATED MINERAL RESOURCE ESTIMATE FOR WILD CATTLE CREEK ANTIMONY DEPOSIT BOOSTED BY 92%
10. Castillo Copper (ASX:CCZ). News Release. 25 July 2023. Cangai MRE: 4.6 Mt @ 2.45% Cu for ~114 kt Copper.
11. Thomson Resources (ASX: TMZ) News Release 11 August 2021: Thomson Announces 20.7 Moz Silver Equivalent Indicated and Inferred Mineral Resource Estimate for Conrad.
12. Thomson Resources (ASX: TMZ) News Release 9 June 2022: Thomson Delivers 14 Moz Silver Equivalent Indicated and Inferred Mineral Resource Estimate for Webbs Deposit.

### About Cosmo Metals Ltd

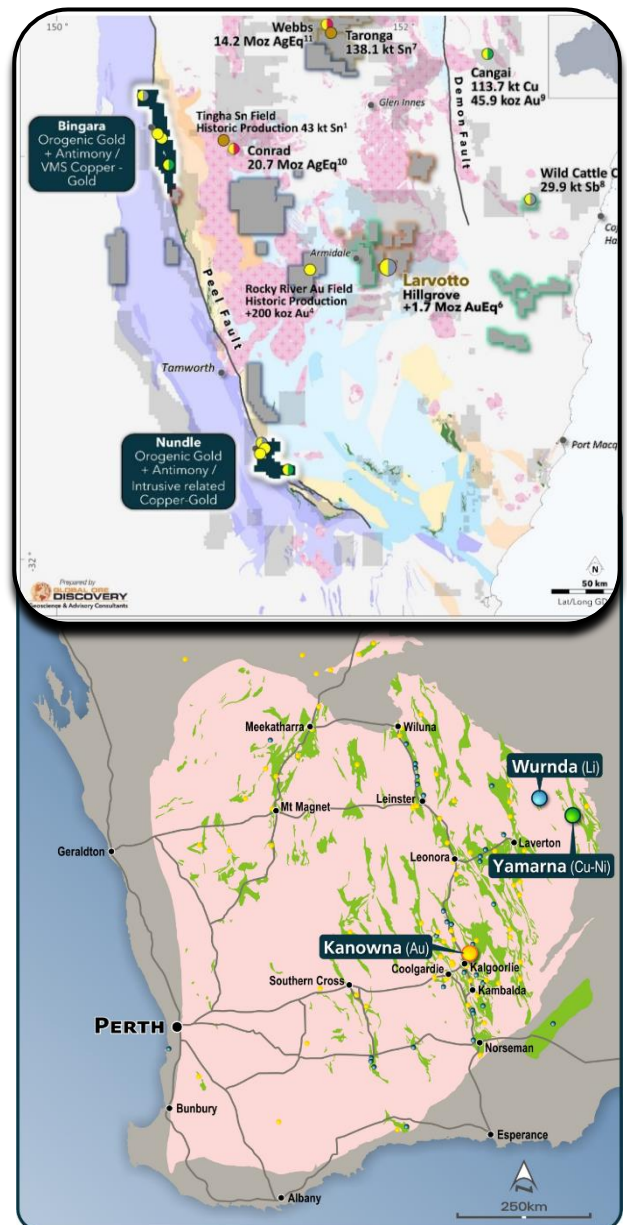
Cosmo Metals Ltd (Cosmo; ASX: CMO) is an ASX-listed gold and base metals exploration company with key projects located in WA and NSW.

Cosmo is acquiring the underexplored and highly prospective Bingara and Nundle gold-antimony and copper projects which cover an area of ~743km<sup>2</sup> in the New England Orogen of northern NSW.

While several high-grade gold, antimony, copper and gold deposits have historically been discovered and mined across the Bingara and Nundle Projects, there has been only sporadic exploration since the 1970's with no drilling in ~30 years.

Cosmo is also advancing work on the Kanowna Gold Project (KGP) located about 13 km north of Kalgoorlie and adjacent to the 7moz Au Kanowna Belle gold mine. Cosmo also owns the advanced Yamarna Project in the Eastern Goldfields region which contains significant intrusive-hosted base metal mineralisation, including the Mt Venn Cu-Ni-Co deposit.

Cosmo is supported by a strong technical team who are advancing exploration on multiple fronts.



## Appendix 1 – Drill Intercept and Rock Chip Results

**Table 1: Bingara Spring Creek Historic Gold Intercepts >5 g\*m Au Cut off.**

Hole ID	From (m)	To (m)	Intersection downhole (m)	Au (g/t)	Au (g*m)	Au Cut off
PDHSC10	19.5	25.5	6.00	2.97	17.82	0.3 g/t
<i>Including</i>	19.5	22.5	3.00	5.51	16.52	2.0 g/t
SC17	8.0	14.0	6.00	6.43	38.55	0.3 g/t
<i>Including</i>	12.0	14.0	2.00	17.59	35.17	2.0 g/t
SC19	1.0	7.0	6.00	0.85	5.11	0.3 g/t
SC22	16.0	25.0	9.00	1.26	11.37	0.3 g/t
SC24	14.0	23.0	9.00	1.64	14.77	0.3 g/t
<i>Including</i>	22.0	23.0	1.00	5.96	5.96	2.0 g/t
SC25	14.0	23.0	9.00	1.15	10.38	0.3 g/t
SC26	1.0	9.0	8.00	2.83	22.62	0.3 g/t
SC27	5.0	9.0	4.00	2.07	8.29	0.3 g/t
SC27	12.0	16.0	4.00	1.46	5.82	0.3 g/t
SC28	19.0	22.0	3.00	1.90	5.70	0.3 g/t
SCDH3	19.0	33.0	14.00	1.53	21.44	0.3 g/t
<i>Including</i>	23.0	28.0	5.00	2.45	12.23	2.0 g/t
SCDH4	4.0	10.0	6.00	0.91	5.44	0.3 g/t
SCDH5	7.0	15.0	8.00	1.27	10.18	0.3 g/t
SCDH7	25.0	30.0	5.00	1.08	5.39	0.3 g/t
SCRC2	34.0	36.0	2.00	3.38	6.76	0.3 g/t
<i>Including</i>	34.0	35.0	1.00	5.23	5.23	2.0 g/t
SCRC9	14.0	16.0	2.00	3.18	6.36	0.3 g/t

Drill composites were calculated using a 0.3 g/t Au cut off with 2 m internal dilution and for internal intervals of higher grade mineralisation a cut off of 2.0 g/t Au was applied. See Table 3 & 4 for a complete list of drill hole intercepts.

See JORC Table 1 for collar coordinates and drill hole azimuth, date of drilling, and exploration company.

While drilling, sampling protocols, and assay QAQC procedures generally match industry standards at the time the work was done they are not consistent with currently industry practice required to meeting 2012 JORC code for reporting of exploration results. Results are stated here to provide an indication of assay grades that may potentially be received from future drill testing at this prospect.



## – JORC Code, 2012 Edition – Table 1

This Table 1 refers to historic exploration including drilling, rock chip sampling and costean sampling on EL8574 (Bingara), EL8800(All Nations) and EL8692 (Nundle).

### – Section 1 Sampling Techniques and Data

(Criteria in this section apply to all succeeding sections.)

Criteria	JORC Code explanation	Commentary
<b>Sampling techniques</b>	<ul style="list-style-type: none"> <li>Nature and quality of sampling (eg cut channels, random chips, or specific specialised industry standard measurement tools appropriate to the minerals under investigation, such as down hole gamma sondes, or handheld XRF instruments, etc). These examples should not be taken as limiting the broad meaning of sampling.</li> <li>Include reference to measures taken to ensure sample representivity and the appropriate calibration of any measurement tools or systems used.</li> <li>Aspects of the determination of mineralisation that are Material to the Public Report.</li> <li>In cases where 'industry standard' work has been done this would be relatively simple (eg 'reverse circulation drilling was used to obtain 1 m samples from which 3 kg was pulverised to produce a 30 g charge for fire assay'). In other cases more explanation may be required, such as where there is coarse gold that has inherent sampling problems. Unusual commodities or mineralisation types (eg submarine nodules) may warrant disclosure of detailed information.</li> </ul>	<p><b>EL 8574 and EL 8800 Bingara &amp; All Nations</b>  <u>Spring Creek Drilling</u></p> <p>45 drill holes for 17,37.25 m have been completed across the Spring Creek Prospect by three companies between 1983 and 1996.</p> <p><i>Freeport Australia Pty Ltd 1984</i></p> <ul style="list-style-type: none"> <li>Drilling comprised of 7 drill holes for 346.75 m including 2 percussion pre-collars with diamond tails (SCDH1 &amp; 7) and 5 percussion holes (SCDH2-6).</li> <li>Holes range in length from 14 - 137.25m.</li> <li>Diamond core was NQ size, and the percussion holes were 5.5" drilled with a 4.5" bit. Percussions to NQ change over depths are recorded on logging sheets.</li> <li>Drilling completed by Overland Drilling using a Warman Scout 250.</li> <li>Sample methodology and measures taken to ensure sample representivity are unknown.</li> <li>Samples were analysed at ALS Brisbane.</li> <li>Sample preparation techniques are unknown.</li> <li>Samples were analysed for Au, Cu, Cr, As and Ag. Analysis methods are unknown.</li> </ul> <p><i>Freeport Australia Pty Ltd 1985</i></p> <ul style="list-style-type: none"> <li>Drilling comprised of 5 drill holes for 233.5 m (PHDSC8, 8R, 9-11). Holes were collared with RAB and finished with 4" percussion tails.</li> <li>Drilling completed by Overland Drilling using a Warman Scout 250.</li> <li>Sample methodology and measures taken to ensure sample representivity are unknown.</li> </ul>

Criteria	JORC Code explanation	Commentary
		<ul style="list-style-type: none"> <li>Samples were analysed at ALS Brisbane. Select samples were sent for analysis. PHDSC8 was not analysed.</li> <li>Sample preparation techniques are unknown.</li> <li>All samples were analysed for Au with select analysis for As. Au was analysis by 50g fire assay with AAS finish and As by Hydride Generation.</li> </ul> <p><i>Tingha Holdings Pty Ltd and TJ 7 V Noonan Pty Ltd 1988</i></p> <ul style="list-style-type: none"> <li>Drilling comprises 20 holes for 451 m (SC12-31). Holes were Reverse Circulation (RC) with a 4.5" bit. Depths from 12 - 39m.</li> <li>Drilling was completed by Connell Holdings</li> <li>Sample methodology and measures taken to ensure sample representivity are unknown.</li> <li>Samples were analysed at Tetchem Laboratories.</li> <li>Sample preparation techniques are unknown.</li> <li>Au was analysis by 30g fire assay and As and Sb by XRF</li> </ul> <p><i>Decade Mining Resource NL (Probe Resources NL) 1996</i></p> <ul style="list-style-type: none"> <li>13 drill holes for 706 m (SCRC1-13). Holes were drilled Reverse Circulation (RC). Depths range from 26-76m.</li> <li>Drilling was completed by Mitchel Drilling using a Mitchel 100 mounted on a 6 x 4 Louisville truck.</li> <li>The hole was blown clean at the end of each meter with sample taken from the truck mounted cyclone. Samples were riffle spit with composite 2m samples sent for assay. Each meter was bagged and stored on site for re-assay.</li> <li>Check samples were taken every 20 samples and 31, 1 m samples were submitted to the lab following results from 2 m composites.</li> <li>Samples were analysed at Tetchem Laboratories.</li> <li>Sample preparation techniques are unknown.</li> <li>Au was analysed by 50g fire assay with AAS (Lab code: PM209)</li> <li>As was analysed using AAS hydride generation (Lab code: G004)</li> <li>Pt and Pd were analyses using a 50g fine assay with AAS finish (Lab code: PM217).</li> </ul>

Criteria	JORC Code explanation	Commentary
		<ul style="list-style-type: none"> <li>Cu, Pb, Zn, Ag, Co, Cr, Mo and Ni were analysed using ICP (Lab code: I.C.580)</li> </ul> <p><u>Mt Everest Rock Chips</u></p> <p>94 rock chips have been collected from the Mt Everest Prospect by three companies between 1988 and 2008.</p> <p><i>CRA Exploration Pty Limited 1988</i></p> <ul style="list-style-type: none"> <li>Rock chip sampling was completed by CRA Exploration Pty Limited in 1988 with 23 rock chip samples collected (2218818, 821, 822, 823, 858, 859, 862, 864 &amp; 901-915).</li> <li>Samples are recorded as outcrop, float and mullock samples. Measures to ensure sample representivity are unknown.</li> <li>Samples were analysed at ALS Brisbane.</li> <li>Sample preparation is unknown</li> <li>Samples were analysed for Au using 50g fire assay</li> <li>Multi element analysis was completed for Cu, Pb, Zn, Ag, As, Sb, Cr, Mo, Ba, Co &amp; Ni by ICP. Select samples were analysed for Pt and Pd – analysis method is unknown.</li> <li>The nature of quality controls procedures adopted, and their level of precision and accuracy (if used) is unknown.</li> </ul> <p><i>Diatreme Resource Limited 2001</i></p> <ul style="list-style-type: none"> <li>Rock chip sampling was completed by Diatreme Resource Limited in 2001 with 8 rock chip samples collected (43941-48).</li> <li>Samples are recorded as outcrop and mullock samples. Measures to ensure sample representivity are unknown.</li> <li>Samples were analysed at ALS Brisbane.</li> <li>Sample preparation is unknown</li> <li>Samples were analysed for Au using 50g fire assay with AAS finish (Lab Code: PM209)</li> <li>Multi element analysis was completed for Ag, Cu, Pb, Zn, As, Bi, Fe, Mo 7 Sb by partial Aqua Regia (HCl, HNO3) digest with ICP-AES finish (Lab Code: IC581).</li> </ul> <p><i>Overland Resources Limited 2008</i></p>

Criteria	JORC Code explanation	Commentary
		<ul style="list-style-type: none"> <li>Rock chip sampling was completed by Overland Resources Limited in 2008 with 8 rock chip samples collected (116-124).</li> <li>Samples are recorded as outcrop, subcrop and mullock samples. Measures to ensure sample representivity are unknown.</li> <li>Samples were analysed at ALS Laboratory</li> <li>Sample preparation is unknown</li> <li>Analysis methods for Au is unknown</li> <li>Multi element analysis was completed for Ag, As, Co, Su, Ni, Pb &amp; Zn by Aqua regia digestion with ICP-AES finish (Lab Code: ME_ICP44).</li> </ul> <p><b>EL 8692 Nundle</b></p> <p><u>The Folly Line Drilling (The Gap) 1996</u></p> <ul style="list-style-type: none"> <li>Drilling comprised of 12 Reverse Circulation (RC) holes for 793.0 m were completed by Caledonian Pacific Minerals N.L in 1996 along the Folly Line including The Gap prospect (NGPD1-12).</li> <li>RC holes ranged in length from 50-100 m and using the reverse circulation percussion hammer technique.</li> <li>Holes were sampled in full at 4 m or 1 m intervals. Sampling methodologies are unknown. Measures taken to ensure sample representivity are unknown.</li> <li>Sample preparation and assay methods are unknown. 4 m composites were analysed for Au, Ag, Cu, Zn and Pb. 1 m splits were analysed for Au only.</li> </ul> <p><u>Trevena Costeans 1996</u></p> <ul style="list-style-type: none"> <li>Costeaning at the historic Trevena Mine was completed by Caledonian Pacific Minerals N.L in 1996. A total of 30 samples (NBG1075-1104) were collected from four (4) costeans.</li> <li>Costeans were dug along the N, S, E and W of a historic pit using a backhoe and channel sampled at 1m intervals. Measures taken to ensure sample representivity are unknown.</li> <li>Samples were analysed at Analabs in Brisbane.</li> <li>Samples preparation techniques are unknown.</li> </ul>



Criteria	JORC Code explanation	Commentary
		<ul style="list-style-type: none"> <li>Samples were analysed for Au using lab code GG309 (30g fire assay fusion with AAS finish) and As using lab code HA101 (hydride generation with AAS finish).</li> </ul> <p><u>Folly Line Rock Chip and Channel Samples 2007</u></p> <ul style="list-style-type: none"> <li>Rock chip sampling was completed by Cortona Resource Limited in 2007 with 27 rock chip and rock chip channel samples collected (NUN132-144, 150-158 &amp; 161-165).</li> <li>Samples consisted of 1.1 - 4.08kg of rock fragments from outcrop, mullock and channels. Measures taken to ensure sample representivity are unknown.</li> <li>Samples were analysed at ALS Chemex in Orange,</li> <li>Sample preparation included coarse crushing for 70% 6mm (Lab Code: CRU-21) followed by pulverization to 85% passing 75 microns (Lab Code: PUL-23).</li> <li>Samples were analysed for Au using 50g fire assay with AAS finish (Lab Code: AA26).</li> <li>Multi element analysis was completed for Ag, As, Bi, Cu, Mo, Pb, Sb, W &amp; Zn via Atomic Emission with Inductively- Coupled Plasma (Lab Code: ME-ICP41s).</li> </ul>
<b>Drilling techniques</b>	<ul style="list-style-type: none"> <li>Drill type (eg core, reverse circulation, open-hole hammer, rotary air blast, auger, Bangka, sonic, etc) and details (eg core diameter, triple or standard tube, depth of diamond tails, face-sampling bit or other type, whether core is oriented and if so, by what method, etc).</li> </ul>	<p><b>EL 8574 and EL 8800 Bingara &amp; All Nations</b></p> <p><u>Spring Creek Drilling</u></p> <p><i>Freeport Australia Pty Ltd 1984</i></p> <ul style="list-style-type: none"> <li>Drilling comprised of 7 drill holes for 346.75 m including 2 percussion pre-collars with diamond tails (SCDH1 &amp; 7) and 5 percussion-only holes (SCDH2-6).</li> <li>Holes range in length from 14 - 137.25m.</li> <li>Diamond core was NQ size, and the percussion holes were 5.5" diameter, drilled with a 4.5" bit. Percussion pre-collar to NQ diamond tail change over depths are recorded on logging sheets.</li> <li>Drilling completed by Overland Drilling using a Warman Scout 250.</li> </ul> <p><i>Freeport Australia Pty Ltd 1985</i></p>

Criteria	JORC Code explanation	Commentary
		<ul style="list-style-type: none"> <li>Drilling comprised of 5 drill holes for 233.5 m (PHDSC8, 8R, 9-11). Holes were collared with RAB and finished with 4" percussion tails.</li> <li>Drilling completed by Overland Drilling using a Warman Scout 250.</li> </ul> <p><i>Tingha Holdings Pty Ltd and TJ 7 V Noonan Pty Ltd 1988</i></p> <ul style="list-style-type: none"> <li>20 drill holes for a total of 451 m (SC12-31). Holes were Reverse Circulation (RC) with a 4.5" bit. Depths range from 12 -39m.</li> <li>The drilling was completed by Connell Holdings.</li> </ul> <p><i>Decade Mining Resources NL (Probe Resources NL) 1996</i></p> <ul style="list-style-type: none"> <li>Drilling comprised of 13 drill holes for 706 m (SCRC1-13). Holes were drilled Reverse Circulation (RC). Depths range from 26 - 76m.</li> <li>Drilling was completed by Mitchel Drilling using a Mitchel 100 mounted on a 6 x 4 Louisville truck.</li> </ul> <p><b>EL 8692 Nundle</b></p> <p><u>The Folly Line Drilling (The Gap) 1996</u></p> <ul style="list-style-type: none"> <li>Caledonian Pacific Minerals completed 12 Reverse Circulation (RC) holes along the Folly Line, for a total of 793.0 m. RC holes ranged in length from 50-100 m and using the reverse circulation percussion hammer technique.</li> <li>Holes were drilled by Anderson Drilling using an Edson 3000.</li> </ul>
<b>Drill sample recovery</b>	<ul style="list-style-type: none"> <li>Method of recording and assessing core and chip sample recoveries and results assessed.</li> <li>Measures taken to maximise sample recovery and ensure representative nature of the samples.</li> <li>Whether a relationship exists between sample recovery and grade and whether sample bias may have occurred due to preferential loss/gain of fine/coarse material.</li> </ul>	<p><b>EL 8574 and EL 8800 Bingara &amp; All Nations</b></p> <p><u>Spring Creek Drilling</u></p> <p><i>Freeport Australia Pty Ltd 1984</i></p> <ul style="list-style-type: none"> <li>No record of sample recovery has been located.</li> <li>Measures taken to maximise sample recovery and ensure the representative nature of the samples are unknown.</li> </ul> <p><i>Freeport Australia Pty Ltd 1985</i></p> <ul style="list-style-type: none"> <li>No record of sample recovery has been located.</li> <li>Measures taken to maximise sample recovery and ensure the representative nature of the samples are unknown.</li> </ul> <p><i>Tingha Holdings Pty Ltd and TJ 7 V Noonan Pty Ltd 1988</i></p>

Criteria	JORC Code explanation	Commentary
		<ul style="list-style-type: none"> <li>No record of sample recovery has been located.</li> <li>Measures taken to maximise sample recovery and ensure the representative nature of the samples are unknown.</li> </ul> <p><i>Decade Mining Resources NL (Probe Resources NL) 1996</i></p> <ul style="list-style-type: none"> <li>No record of sample recovery has been located.</li> <li>The hole was blown clean at the end of each meter with sample taken from the truck mounted cyclone. Samples were riffle spit with composite 2 m samples sent for assay. The splitter type (i.e. stand-alone or rig mounted) and sample split are unknown. Each meter was bagged and stored on site for re-assay.</li> </ul> <p><b>EL 8692 Nundle</b></p> <p><u>The Folly Line Drilling (The Gap) 1996</u></p> <ul style="list-style-type: none"> <li>No record of sample recovery has been located.</li> <li>Measures taken to maximise sample recovery and ensure the representative nature of the samples are unknown.</li> </ul>
<b>Logging</b>	<ul style="list-style-type: none"> <li>Whether core and chip samples have been geologically and geotechnically logged to a level of detail to support appropriate Mineral Resource estimation, mining studies and metallurgical studies.</li> <li>Whether logging is qualitative or quantitative in nature. Core (or costean, channel, etc) photography.</li> <li>The total length and percentage of the relevant intersections logged.</li> </ul>	<p><b>EL 8574 and EL 8800 Bingara &amp; All Nations</b></p> <p><u>Spring Creek Drilling</u></p> <p><i>Freeport Australia Pty Ltd 1984</i></p> <ul style="list-style-type: none"> <li>Percussion and diamond logging was on an interval basis. Lithology, oxidation, alteration, and mineralisation were logged into a single sheet.</li> <li>The logging was qualitative</li> <li>The level of logging detail is considered appropriate for exploration targeting purposes.</li> </ul> <p><i>Freeport Australia Pty Ltd 1985</i></p> <ul style="list-style-type: none"> <li>RC logging was on a 2.0-1.5 m basis. Lithology, oxidation, alteration, and mineralisation were logged into a single sheet.</li> <li>The logging was qualitative</li> <li>The level of logging detail is considered appropriate for exploration targeting purposes.</li> </ul>

Criteria	JORC Code explanation	Commentary
		<p><i>Tingha Holdings Pty Ltd and TJ 7 V Noonan Pty Ltd 1988</i></p> <ul style="list-style-type: none"> <li>• RC was on an interval basis. Lithology, oxidation, alteration, and mineralisation were logged into a single sheet.</li> <li>• The logging was qualitative</li> <li>• The level of logging detail is considered appropriate for exploration targeting purposes.</li> </ul> <p><i>Decade Mining Resources NL (Probe Resources NL) 1996</i></p> <ul style="list-style-type: none"> <li>• RC logging was on an interval basis. Lithology, oxidation, alteration, and mineralisation were logged into a single sheet.</li> <li>• The logging was qualitative and quantitative.</li> <li>• The level of logging detail is considered appropriate for exploration targeting purposes.</li> </ul> <p><u>Mt Everest Rock Chips</u></p> <p><i>CRA Exploration Pty Limited 1988</i></p> <ul style="list-style-type: none"> <li>• Geological information was recorded qualitatively for all samples. Information recorded included lithology, oxidation, alteration and mineralisation.</li> <li>• The information recorded is considered appropriate for exploration targeting purposes.</li> </ul> <p><i>Diatreme Resource Limited 2001</i></p> <ul style="list-style-type: none"> <li>• Geological information was recorded qualitatively for all samples. Information recorded included lithology, oxidation, alteration and mineralisation. Outcrop strike, dip, width and length were also recorded.</li> <li>• Magnetic susceptibility measurements of each sample were also recorded using a Exploranium Kappameter KT-9.</li> <li>• The information recorded is considered appropriate for exploration targeting purposes.</li> </ul> <p><i>Overland Resources Limited 2008</i></p> <ul style="list-style-type: none"> <li>• Geological information was recorded qualitatively for all samples. The information recorded included lithology, alteration and mineralisation.</li> </ul>



Criteria	JORC Code explanation	Commentary
		<ul style="list-style-type: none"> <li>The information recorded is considered appropriate for exploration targeting purposes.</li> </ul> <p><b>EL 8692 Nundle</b></p> <p><u>The Folly Line Drilling (The Gap) 1996</u></p> <ul style="list-style-type: none"> <li>RC logging was on a metre-by-metre basis. Lithology, oxidation, alteration, and mineralisation were logged into a single sheet.</li> <li>Logging was completed into a spread sheet layout pre-loaded into a notebook computer in the field. Chips were collected and stored in 20 compartment plastic trays.</li> <li>The logging of RC chips was qualitative</li> <li>Holes NGPD2-NGPD12 were logged in full. No logging is available for NPGD1.</li> <li>The level of logging detail is considered appropriate for exploration targeting purposes.</li> </ul> <p><u>Trevena Costeans 1996</u></p> <ul style="list-style-type: none"> <li>Geological information was recorded for each costean channel sample. For each sample lithology, alteration, oxidation and mineralisation were recorded qualitatively. Structural measurements were also recorded.</li> <li>Geological information was recorded into a spread sheet layout pre-loaded into a notebook computer in the field.</li> <li>The information recorded is considered appropriate for exploration targeting purposes.</li> </ul> <p><u>Folly Line Rock Chip and Channel Samples 2007</u></p> <ul style="list-style-type: none"> <li>Geological information was recorded qualitatively for some samples. Information recorded included lithology, oxidation, alteration and mineralisation.</li> <li>The information recorded is considered appropriate for exploration targeting purposes.</li> </ul>
<b>Sub-sampling techniques</b>	<ul style="list-style-type: none"> <li>If core, whether cut or sawn and whether quarter, half or all core taken.</li> <li>If non-core, whether riffled, tube sampled, rotary split, etc and whether</li> </ul>	<p><b>EL 8574 and EL 8800 Bingara &amp; All Nations</b></p> <p><u>Spring Creek Drilling</u></p>

Criteria	JORC Code explanation	Commentary
<b>and sample preparation</b>	<p>sampled wet or dry.</p> <ul style="list-style-type: none"> <li>For all sample types, the nature, quality and appropriateness of the sample preparation technique.</li> <li>Quality control procedures adopted for all sub-sampling stages to maximise representivity of samples.</li> <li>Measures taken to ensure that the sampling is representative of the in situ material collected, including for instance results for field duplicate/second-half sampling.</li> <li>Whether sample sizes are appropriate to the grain size of the material being sampled.</li> </ul>	<p><i>Freeport Australia Pty Ltd 1984</i></p> <ul style="list-style-type: none"> <li>Holes were sampled selectively with 0.4 - 2.6m intervals but generally 1m. hole SCDH6 was not sampled.</li> <li>Sampling methodologies are unknown. Measures taken to ensure sample representivity are unknown. Quality control procedures are unknown.</li> </ul> <p><i>Freeport Australia Pty Ltd 1985</i></p> <ul style="list-style-type: none"> <li>Holes were sampled selectively with samples typically 1.5m in length, but ranging from 1.0m – 3.0m. Hole PDHSC10 was not sampled.</li> <li>Sampling methodologies are unknown. Measures taken to ensure sample representivity are unknown. Quality control procedures are unknown.</li> </ul> <p><i>Tingha Holdings Pty Ltd and TJ 7 V Noonan Pty Ltd 1988</i></p> <ul style="list-style-type: none"> <li>Holes were selectively sampled in full at 1 m intervals. Sampling methodologies are unknown. Measures taken to ensure sample representivity are unknown.</li> <li>Quality control procedures are unknown however, sample ledgers include repeat analysis on select samples.</li> </ul> <p><i>Decade Mining Resources NL (Probe Resources NL) 1996</i></p> <ul style="list-style-type: none"> <li>The hole was blown clean at the end of each meter with sample taken from the truck mounted cyclone.</li> <li>Samples were riffle spit with composite 2 m samples sent for assay. Compositing technique is unknown.</li> <li>Each meter was bagged and stored on site for re-assay.</li> <li>Check samples were taken every 20 samples and 31 x 1 m samples were submitted to the lab following results from the 2 m composites.</li> </ul> <p><u><i>Mt Everest Rock Chips</i></u></p> <ul style="list-style-type: none"> <li>Rock chip sampling was completed by CRA Exploration Pty Limited in 1988 with 23 rock chip samples collected (2218818, 821, 822, 823, 858, 859, 862, 864 &amp; 901-915).</li> <li>Measures taken to ensure sample representivity are unknown.</li> </ul>

Criteria	JORC Code explanation	Commentary
		<ul style="list-style-type: none"> <li>Quality control procedures are unknown</li> </ul> <p><i>Diatreme Resource Limited 2001</i></p> <ul style="list-style-type: none"> <li>Rock chip sampling was completed by Diatreme Resource Limited in 2001 with 8 rock chip samples collected (43941-48).</li> <li>Measures taken to ensure sample representivity are unknown.</li> <li>Quality control procedures are unknown</li> </ul> <p><i>Overland Resources Limited 2008</i></p> <ul style="list-style-type: none"> <li>Rock chip sampling was completed by Overland Resources Limited in 2008 with 8 rock chip samples collected (116 - 124).</li> <li>Samples were taken of outcrop and float material. Measures taken to ensure sample representivity are unknown.</li> <li>Samples were analysed at ALS Laboratory</li> <li>Quality control procedures are unknown</li> </ul> <p><b>EL 8692 Nundle</b></p> <p><u>The Folly Line Drilling (The Gap) 1996</u></p> <ul style="list-style-type: none"> <li>Holes were sampled in full at 4 m or 1 m intervals. Sampling methodologies are unknown. Measures taken to ensure sample representivity are unknown. Quality control procedures are unknown.</li> </ul> <p><u>Trevena Costeans 1996</u></p> <ul style="list-style-type: none"> <li>Costeans were dug using a backhoe and channel sampled at 1m intervals. Measures taken to ensure sample representivity are unknown.</li> <li>Channel sampling is considered an appropriate technique for sampling costeans.</li> <li>Quality control procedures are unknown</li> </ul> <p><u>Folly Line Rock Chip and Channel Samples 2007</u></p> <ul style="list-style-type: none"> <li>Rock chip sampling was completed by Cortona Resource Limited in 2007 with 27 rock chip and rock chip channel samples collected (NUN132-144, 150-158 &amp; 161-165).</li> <li>Samples consisted of 1.1 - 4.08kg of rock fragments from outcrops. Measures taken to ensure sample representivity are unknown.</li> </ul>

Criteria	JORC Code explanation	Commentary
		<ul style="list-style-type: none"> <li>Quality control procedures are unknown</li> </ul>
<b>Quality of assay data and laboratory tests</b>	<ul style="list-style-type: none"> <li>The nature, quality and appropriateness of the assaying and laboratory procedures used and whether the technique is considered partial or total.</li> <li>For geophysical tools, spectrometers, handheld XRF instruments, etc, the parameters used in determining the analysis including instrument make and model, reading times, calibrations factors applied and their derivation, etc.</li> <li>Nature of quality control procedures adopted (eg standards, blanks, duplicates, external laboratory checks) and whether acceptable levels of accuracy (ie lack of bias) and precision have been established.</li> </ul>	<p><b>EL 8574 and EL 8800 Bingara &amp; All Nations Spring Creek Drilling</b></p> <p><i>Freeport Australia Pty Ltd 1984</i></p> <ul style="list-style-type: none"> <li>Samples were analysed at ALS Brisbane.</li> <li>Sample preparation techniques are unknown.</li> <li>Samples were analysed for Au, Cu, Cr, As and Ag. Analysis methods are unknown.</li> <li>The nature of quality controls procedures adopted and their level of precision and accuracy (if used) is unknown.</li> </ul> <p><i>Freeport Australia Pty Ltd 1985</i></p> <ul style="list-style-type: none"> <li>Samples were analysed at ALS Brisbane. Select samples were sent for analysis. PHDSC8 was not analysed.</li> <li>Sample preparation techniques are unknown.</li> <li>All samples were analysed for Au with select analysis for As. Au was analysis by 50g fire assay with AAS finish and As by Hydride Generation.</li> <li>The nature of quality controls procedures adopted, and their level of precision and accuracy (if used) is unknown.</li> </ul> <p><i>Tingha Holdings Pty Ltd and TJ &amp; V Noonan Pty Ltd 1988</i></p> <ul style="list-style-type: none"> <li>Samples were analysed at Tetchem Laboratories.</li> <li>Sample preparation techniques are unknown.</li> <li>Au was analysis by 30g fire assay and As and Sb by XRF</li> <li>Quality control procedures are unknown however, sample ledgers include repeat analysis on select samples.</li> </ul> <p><i>Decade Mining Resources NL (Probe Resources NL) 1996</i></p> <ul style="list-style-type: none"> <li>Samples were analysed at Tetchem Laboratories.</li> <li>Sample preparation techniques are unknown.</li> <li>Au was analysed by 50g fire assay with AAS finish (Lab code: PM209)</li> <li>As was analysed using AAS hydride generation (Lab code: G004).</li> <li>Pt and Pd were analyses using a 50g fire assay with AAS finish (Lab</li> </ul>



Criteria	JORC Code explanation	Commentary
		<p>code: PM217).</p> <ul style="list-style-type: none"> <li>• Cu, Pb, Zn, Ag, Co, Cr, Mo and Ni were analysed using ICP (Lab code: I.C.580). Digest information is unknown.</li> <li>• Check samples were taken every 20 samples and 31 x1 m samples were submitted to the lab following results from 2 m composites.</li> </ul> <p><u>Mt Everest Rock Chips</u></p> <p><i>CRA Exploration Pty Limited 1988</i></p> <ul style="list-style-type: none"> <li>• Samples were analysed at ALS Brisbane.</li> <li>• Sample preparation is unknown</li> <li>• Samples were analysed for Au using 50g fire assay</li> <li>• Multi element analysis was completed for Cu, Pb, Zn, Ag, As, Sb, Cr, Mo, Ba, Co &amp; Ni by ICP. Select samples were analysed for Pt and Pd – analysis method is unknown.</li> <li>• The nature of quality controls procedures adopted, and their level of precision and accuracy (if used) is unknown.</li> </ul> <p><i>Diatreme Resource Limited 2001</i></p> <ul style="list-style-type: none"> <li>• Samples were analysed at ALS Brisbane.</li> <li>• Sample preparation is unknown</li> <li>• Samples were analysed for Au using 50g fire assay with AAS finish (Lab Code: PM209)</li> <li>• Multi element analysis was completed for Ag, Cu, Pb, Zn, As, Bi, Fe, Mo 7 Sb by partial Aqua Regia (HCl, HNO3) digest with ICP-AES finish (Lab Code: IC581).</li> <li>• The nature of quality controls procedures adopted, and their level of precision and accuracy (if used) is unknown.</li> </ul> <p><i>Overland Resources Limited 2008</i></p> <ul style="list-style-type: none"> <li>• Samples were analysed at ALS Laboratory</li> <li>• Sample preparation is unknown</li> <li>• Analysis methods for Au is unknown</li> <li>• Multi element analysis was completed for Ag, As, Co, Su, Ni, Pb &amp; Zn by Aqua regia digestion with ICP-AES finish (Lab Code: ME_ICP44).</li> <li>• The nature of quality controls procedures adopted and their level of</li> </ul>

Criteria	JORC Code explanation	Commentary
		<p>precision and accuracy (if used) is unknown.</p> <p><b>EL 8692 Nundle</b></p> <p><u>The Folly Line Drilling (The Gap) 1996</u></p> <ul style="list-style-type: none"> <li>• Samples were analysed at Analabs in Brisbane.</li> <li>• Samples preparation and analytical techniques are unknown. Samples were analysed for Au, Ag, Cu, Zn &amp; Pb.</li> <li>• The nature of quality controls procedures adopted, their precision and accuracy (if used) is unknown.</li> </ul> <p><u>Trevena Costeans 1996</u></p> <ul style="list-style-type: none"> <li>• Samples were analysed at Analabs in Brisbane.</li> <li>• Samples preparation techniques are unknown.</li> <li>• Samples were analysed for Au using lab code GG309 (30g fine assay fusion with AAS finish) and As using lab code HA101 (hydride generation with AAS finish).</li> <li>• The nature of quality controls procedures adopted, their precision and accuracy (if used) is unknown.</li> </ul> <p><u>Folly Line Rock Chip and Channel Samples 2007</u></p> <ul style="list-style-type: none"> <li>• Samples were analysed by ALS Chemex in Orange,</li> <li>• Sample preparation included coarse crushing for 70% 6mm (Lab Code: CRU-21) followed by pulverization to 85% passing 75 microns (Lab Code: PUL-23).</li> <li>• Samples were analysed for Au using 50g fire assay with AAS finish (Lab Code: AA26)</li> <li>• Multi element analysis was completed for Ag, As, Bi, Cu, Mo, Pb, Sb, W &amp; Zn via Atomic Emission with Inductively- Coupled Plasma (Lab Code: ME-ICP41s).</li> <li>• The nature of quality controls procedures adopted their precision and accuracy (if used) is unknown.</li> </ul>
<b>Verification of sampling and assaying</b>	<ul style="list-style-type: none"> <li>• The verification of significant intersections by either independent or alternative company personnel.</li> <li>• The use of twinned holes.</li> </ul>	<ul style="list-style-type: none"> <li>• Drill results, costean results and rock chip results have been cross-checked against reported assay results in company annual reports where available. Results are reported as text files, within digital tables,</li> </ul>

Criteria	JORC Code explanation	Commentary
	<ul style="list-style-type: none"> <li>Documentation of primary data, data entry procedures, data verification, data storage (physical and electronic) protocols.</li> <li>Discuss any adjustment to assay data.</li> </ul>	<p>handwritten and as assay certificates. Any errors were corrected prior to reporting.</p> <ul style="list-style-type: none"> <li>No twin holes are available.</li> <li>Documentation of primary data: <ul style="list-style-type: none"> <li>Spring Creek Drilling – Documentation of primary data, data entry procedures, data verification, data storage protocols are unknown.</li> <li>Mt Everest Rock Chips - Documentation of primary data, data entry procedures, data verification, data storage protocols are unknown.</li> <li>Folly Line Drilling – all holes were logged into a spread sheet layout pre-loaded into a note-book computer in the field. Chips were collected and stored in 20 compartment plastic trays.</li> <li>Trevena Rock Chips - all samples were logged into a spread sheet layout pre-loaded into a notebook computer in the field.</li> <li>Folly Line Rock Chips and Channel Samples - Documentation of primary data, data entry procedures, data verification, data storage protocols are unknown.</li> </ul> </li> <li>All data reported in this JORC table has been recovered from the New South Wales DIGS data platform and is stored in Microsoft Excel Format.</li> <li>No adjustments were made to the assay data.</li> </ul>
<b>Location of data points</b>	<ul style="list-style-type: none"> <li>Accuracy and quality of surveys used to locate drill holes (collar and down-hole surveys), trenches, mine workings and other locations used in Mineral Resource estimation.</li> <li>Specification of the grid system used.</li> <li>Quality and adequacy of topographic control.</li> </ul>	<p><b>EL 8574 and EL 8800 Bingara &amp; All Nations</b>  <u>Spring Creek Drilling</u></p> <ul style="list-style-type: none"> <li>Topographic Control - A 2 m DEM topographic surface was utilized, captured in May 2017. The ground surface model was a gridded data format derived from NSW Spatial Services Category 2 (Classification Level 3) LiDAR (Light Detection and Ranging) from an ALS50 (SN092) sensor. The model is not hydrologically enforced. The data used to create this DEM has an accuracy of 0.3m (95% Confidence Interval)</li> </ul>

Criteria	JORC Code explanation	Commentary
		<p>vertical and 0.8m (95% Confidence Interval) horizontal.</p> <ul style="list-style-type: none"> <li>12 collars were identified in the field during a Nov/Dec 2017 field reconnaissance trip by Global Ore, and their locations confirmed by handheld GPS. Hole SCRC1 coordinates were updated based upon the field reconnaissance.</li> </ul> <p><i>Freeport Australia Pty Ltd 1984</i></p> <ul style="list-style-type: none"> <li>Collar survey method is unknown. Collar locations are recorded on maps in a local grid. Maps have been registered and rotated to allow for conversion of the collars from local grid to GDA94.</li> <li>Conversions were verified in the field with holes SCDH5 and SCDH6 located using a hand-held GPS with an accuracy of +/-5m.</li> <li>The hole (collar) azimuth is recorded in magnetic. No downhole surveys are recorded, with a maximum hole depth of 137.25 m.</li> </ul> <p><i>Freeport Australia Pty Ltd 1985</i></p> <ul style="list-style-type: none"> <li>Collar survey method is unknown. Collar locations are recorded on maps in a local grid. Maps have been registered and rotated to allow for conversion of the collars from local grid to GDA94.</li> <li>Conversions were verified in the field with holes PDHSC8, 8R &amp; 9 located using a hand-held GPS with an accuracy of +/-5m.</li> <li>The hole (collar) azimuth is recorded in magnetic. There are no downhole surveys recorded, with a maximum hole depth of 71 m.</li> </ul> <p><i>Tingha Holdings Pty Ltd and TJ &amp; V Noonan Pty Ltd 1988</i></p> <ul style="list-style-type: none"> <li>Collar survey method is unknown. Collar locations are recorded on maps in a local grid. Maps have been registered and rotated to allow for conversion of the collars from local grid to GDA94.</li> <li>Conversions were verified in the field with holes SC17, 18, 24, 37 &amp; 28 located using a hand-held GPS with an accuracy of +/-5m.</li> <li>All holes are vertical. There are no downhole surveys recorded, with a maximum hole depth of 76 m.</li> </ul> <p><i>Decade Mining Resources NL (Probe Resources NL) 1996</i></p> <ul style="list-style-type: none"> <li>Collar survey method is unknown. Collar locations are recorded on</li> </ul>

Criteria	JORC Code explanation	Commentary
		<p>maps in a local grid. Maps have been registered and rotated to allow for conversion of the collars from local grid to GDA94.</p> <ul style="list-style-type: none"> <li>• Conversions were verified in the field with holes SCRC1-3 located using a hand-held GPS with an accuracy of +/-5m. Hole SCRC1 coordinates were updated based upon the field reconnaissance.</li> <li>• The hole (collar) azimuth is recorded in magnetic and has been covered to GDA94. There are no downhole surveys recorded, with a maximum hole depth of 39m.</li> </ul> <p><u>Mt Everest Rock Chips</u></p> <ul style="list-style-type: none"> <li>• Topographic Control - A 5 m DEM topographic surface was utilized, generated from data captured in October 2012. The ground surface model was derived from an ortho-topographic survey, using a Leica Airborne Digital Sensor (vertical accuracy of (+/-) 0.9 m on bare open ground and horizontal accuracy of (+/-) 1.25 m. at 95% Confidence Interval). The model is not hydrologically enforced.</li> </ul> <p><i>CRA Exploration Pty Limited 1988</i></p> <ul style="list-style-type: none"> <li>• Sample location methodology is unknown. Sample locations are documented in a sample ledger in AGD66.</li> </ul> <p><i>Diatreme Resource Limited 2001</i></p> <ul style="list-style-type: none"> <li>• Sample locations recorded using a Garmin GPS II Plus, with a location accuracy of +/- 5 -10m in GDA94.</li> </ul> <p><i>Overland Resources Limited 2008</i></p> <ul style="list-style-type: none"> <li>• Sample locations recorded using a GPS in AGD84 AMG Zone 56.</li> </ul> <p><b>EL 8692 Nundle</b></p> <ul style="list-style-type: none"> <li>• Topographic Control - A 5 m DEM topographic surface was utilized, generated from data captured in May 2013. The ground surface model was derived from an ortho-topographic survey, using a Leica Airborne Digital Sensor (vertical accuracy of (+/-) 0.9 m on bare open ground and horizontal accuracy of (+/-) 1.25 m. at 95% Confidence Interval). The model is not hydrologically enforced.</li> </ul> <p><u>The Folly Line Drilling (The Gap) 1996</u></p>

Criteria	JORC Code explanation	Commentary
		<ul style="list-style-type: none"> <li>Collar survey method is unknown. Drill collar locations are recorded in company annual reports in a local grid (Mumble Mines Grid Reference).</li> <li>The hole (collar) azimuth is recorded in magnetic. There are no downhole surveys recorded, with a maximum hole depth of 100 m.</li> </ul> <p><u>Trevena Costeans 1996</u></p> <ul style="list-style-type: none"> <li>Sample location methodology is known. Sample locations are documented on maps in a local grid (Mumble Mines Grid Reference). Maps have been registered and rotated to GDA94. Sample locations have been digitised from the re-located maps. Sample locations have not been ground truthed.</li> </ul> <p><u>Folly Line Rock Chip and Channel Samples 2007</u></p> <ul style="list-style-type: none"> <li>Sample locations were recorded using a Garmin 60Cs handheld GPS in AGD66 AMG56.</li> </ul> <p><u>Folly Line Magnetism 1997</u></p> <ul style="list-style-type: none"> <li>A real-time GPS system was used when acquiring magnetism over the Folly line with an accuracy of 15 m. The system determines the absolute position of the helicopter in three dimensions by monitoring the ranges to orbiting satellites.</li> <li>Data was collected and reported using Lat-Longs.</li> <li>The Magnetism data was reprocessed in 2020 in GDA94 Zone 56 using SRTM for topographic control.</li> </ul>
<b>Data spacing and distribution</b>	<ul style="list-style-type: none"> <li>Data spacing for reporting Exploration Results.</li> <li>Whether the data spacing and distribution is sufficient to establish the degree of geological and grade continuity appropriate for the Mineral Resource and Ore Reserve estimation procedure(s) and classifications applied.</li> <li>Whether sample compositing has been applied.</li> </ul>	<p><b>EL 8574 and EL 8800 Bingara + All Nations</b></p> <p><u>Spring Creek Drilling</u></p> <ul style="list-style-type: none"> <li>Spring Creek 4.5 km N-S mineralised trend. Drilling is orientated perpendicular or close to perpendicular the strike of the mineralised trend.</li> <li>Drill spacing ranges from 10 - 60m</li> <li>No Mineral Resources or Ore Reserves are being reported here.</li> <li>No sample compositing has been applied.</li> </ul> <p><u>Mt Everest Rock Chips</u></p>



Criteria	JORC Code explanation	Commentary
		<ul style="list-style-type: none"> <li>• Mt Everest rock chip sampling was reconnaissance in nature and as such, the sample spacing is irregular.</li> <li>• The samples of mullock dumps is clustered with reconnaissance samples of mineralised outcrop taken from around these dumps.</li> <li>• No sample compositing has been applied.</li> </ul> <p><b>EL 8692 Nundle</b></p> <p><u>The Folly Line Drilling (The Gap) 1996</u></p> <ul style="list-style-type: none"> <li>• The Folly Line is a 1.7 km N-S mineralised trend. Drilling is orientated perpendicular to the strike of the mineralised trend. The drilling was first pass in nature, targeted beneath historic workings.</li> <li>• No Mineral Resources or Ore Reserves are being reported here.</li> <li>• No sample compositing has been applied.</li> </ul> <p><u>Trevena Costeans 1996</u></p> <ul style="list-style-type: none"> <li>• 4 costeans were dug along the N, S, E and W walls of a historic pit.</li> <li>• Samples were taken as 1 m channels along the costeans.</li> <li>• The costeans were sampled in full to get a detailed geochemical understanding of mineralisation in the historic pit.</li> <li>• No Mineral Resources or Ore Reserves are being reported here.</li> <li>• No sample compositing has been applied.</li> </ul> <p><u>Folly Line Rock Chip and Channel Samples 2007</u></p> <ul style="list-style-type: none"> <li>• Folly Line Rock Chip sampling was reconnaissance in nature and as such, the sample spacing is irregular.</li> <li>• Rock Channel sampling was completed in historic pits and where outcrops allowed.</li> </ul> <p><u>Folly Line Magnetism 1997</u></p> <ul style="list-style-type: none"> <li>• The flight line spacing was 100 m, covering approximately 180km<sup>2</sup>. The tie line spacing was ten times the flight line spacing.</li> </ul>
<b>Orientation of data in relation to</b>	<ul style="list-style-type: none"> <li>• Whether the orientation of sampling achieves unbiased sampling of possible structures and the extent to which this is known, considering the deposit type.</li> <li>• If the relationship between the drilling orientation and the orientation of</li> </ul>	<p><b>EL 8574 and EL 8800 Bingara + All Nations</b></p> <p><u>Spring Creek Drilling</u></p> <ul style="list-style-type: none"> <li>• Spring Creek 4.5 km N-S mineralised trend. Drilling is orientated perpendicular or close to perpendicular the strike of the mineralised</li> </ul>

Criteria	JORC Code explanation	Commentary
<b>geological structure</b>	key mineralised structures is considered to have introduced a sampling bias, this should be assessed and reported if material.	<p>trend.</p> <ul style="list-style-type: none"> <li>Mineralisation dips shallowly (20-30 degrees) to the east. Angled drill holes range in dip from -77° to -48° dips to minimise the potential for sample bias related to sub-optimal angle of intersection of the structures. Other holes within the dataset were drilled vertically</li> <li>No sampling bias is known to exist, although it is not precluded.</li> </ul> <p><b>EL 8692 Nundle</b></p> <p><u>The Folly Line Drilling (The Gap) 1996</u></p> <ul style="list-style-type: none"> <li>The Folly Line is a 1.7 km N-S mineralised trend. Drilling is orientated perpendicular the strike of the mineralised trend.</li> <li>Mineralisation dips steeply to the west at 80-90 degrees. The dip of the drillholes ranged from -60° to -45°, to minimize the potential for sample bias related to sub-optimal angle of intersection of the structures.</li> <li>No sampling bias is known to exist, although it is not precluded.</li> </ul> <p><u>Trevena Costeans 1996</u></p> <ul style="list-style-type: none"> <li>4 costeans were dug along the N, S, E and W walls of a historic pit.</li> <li>Samples were taken as 1 m channels along the costeans.</li> <li>The costeans were sampled in full to get a detailed geochemical understanding of mineralisation in the historic pit.</li> <li>No sampling bias is known to exist, although it is not precluded.</li> </ul> <p><u>Folly Line Rock Chip and Channel Samples 2007</u></p> <ul style="list-style-type: none"> <li>Folly Line Rock chip sampling was reconnaissance in nature and as such, the sample spacing is irregular.</li> <li>Sampling included outcrop samples and rock chip channels. No information on the orientation of the channels is available.</li> <li>No sampling bias is known to exist, although it is not precluded.</li> </ul> <p><u>Folly Line Magnetism 1997</u></p> <ul style="list-style-type: none"> <li>The survey was completed in an E-W direction, perpendicular to the Folly Line of mineralisation which is roughly N-S.</li> </ul>

Criteria	JORC Code explanation	Commentary
<b>Sample security</b>	<ul style="list-style-type: none"> <li>The measures taken to ensure sample security.</li> </ul>	<ul style="list-style-type: none"> <li>No information is available about measures taken to ensure sample security.</li> </ul>
<b>Audits or reviews</b>	<ul style="list-style-type: none"> <li>The results of any audits or reviews of sampling techniques and data.</li> </ul>	<ul style="list-style-type: none"> <li>Given the historical nature of the information reported here, there has been no formal audit or review of the sampling techniques.</li> <li>Available historic reports have been reviewed and compared to digital data sets.</li> </ul>

## – Section 2 Reporting of Exploration Results

(Criteria listed in the preceding section also apply to this section.)

Criteria	JORC Code explanation	Commentary
<b>Mineral tenement and land tenure status</b>	<ul style="list-style-type: none"> <li>Type, reference name/number, location and ownership including agreements or material issues with third parties such as joint ventures, partnerships, overriding royalties, native title interests, historical sites, wilderness or national park and environmental settings.</li> <li>The security of the tenure held at the time of reporting along with any known impediments to obtaining a licence to operate in the area.</li> </ul>	<ul style="list-style-type: none"> <li>EL 8574, EL 8800 (Bingara) and EL 8692 (Nundle) are 100% held by PTR Resources Pty Ltd (PTR), from Great Southern Gold Corp (GSG) a private company registered in British Columbia, Canada. EL 8574 expires 23/05/2026, EL 8800 expires 07/10/2026 and EL 8692 expires 02/02/2025 with the renewal application in progress.</li> <li>The Crown of New South Wales owns the majority of mineral assets in New South Wales. A mineral royalty is the price charged by the Crown for the transfer of the right to extract a mineral resource. The price (royalty rate) is prescribed in legislation. It is the role of the NSW Department of Primary Industries (DPI), through the Royalty and Statistics Branch, to administer the legislation relating to mineral royalty, collect the royalty due, disburse royalty to private mineral owners and maintain a mining statistics database.</li> <li>There are no ventures, partnerships, historical sites, wilderness or national park and environmental settings on EL 8574, EL 8800 or EL 8692</li> <li>The Gomeroi People have Native title interests over areas of EL 8574, EL 8880 and EL 8692.</li> <li>There are no known impediments to obtaining a license to operate.</li> </ul>

Criteria	JORC Code explanation	Commentary																														
<b>Exploration done by other parties</b>	<ul style="list-style-type: none"><li>Acknowledgment and appraisal of exploration by other parties.</li></ul>	<p><b>EL 8574 and EL 8800 Bingara &amp; All Nations</b></p> <ul style="list-style-type: none"><li>Alluvial deposits derived from narrow auriferous hard rock vein and dissemination deposits were discovered in the early 1890’s and were historically exploited by widespread artisanal mining methods.</li><li>NSW DMR website details a total of 21 explorers that have been active within and near the Bingara Project boundary since the early 1960s. A significant hiatus in exploration existed until the commencement of nickel exploration in the late 1960’s, when a significant regional to prospect-scale exploration campaign was commenced by Silver Valley Minerals NL. Most of the exploration in the Bingara Project area, which was concentrated in the mid 1980’s through to the mid 1990’s, focused on gold and copper; a significant amount of gold exploration took place in the Spring Creek area. Historic Exploration is summarised below</li></ul> <table><tr><th>Year</th><th>Company</th><th>Prospects</th><th>Exploration Activity Completed</th></tr><tr><td>1965</td><td>Mount Isa Mines</td><td>Mt Everest (Cu)</td><td>Field investigations of copper deposits in the Woolomin Fm east of Upper Bingara</td></tr><tr><td>1969 - 1970</td><td>Silver Valley Minerals NL</td><td>Upper Bingara (Au), Mt Everest (Cu), Withers (Cu), Harrision’s (Ni-Cu)</td><td>Drainage, rock chip and soil geochemistry in the upper Bingara area. Four separate reconnaissance ground Induced Polarisation (IP) surveys over the Everest (Cu), Withers (Cu), Tea Tree (Cu) and Young Property (Cu-Ni) prospects. Percussion and diamond drilling. No gold assays</td></tr><tr><td>1971</td><td>Nickel Mines</td><td>Bingara - Warialda</td><td>Reconnaissance rock chip sampling</td></tr><tr><td>1974</td><td>Electrolytic Zinc</td><td>Reconnaissance</td><td>Extensive stream sediment sampling and field investigations cyprus-style copper deposits within the Woolomin Fm, particularly at Gulf creek Mine.</td></tr><tr><td>1982</td><td>Newmont</td><td>Gulf Creek (Cu), Mt Everest (Cu)</td><td>Geological mapping and rock chip sampling. Investigated potential for significant base metal deposits and gold in chert horizons.</td></tr><tr><td>1983</td><td rowspan="2">Freeport Australia</td><td rowspan="2">Old Ballarat (Au), Spring Creek (Au), Emello (Cu)</td><td>In JV with Tingha Holdings. Geological Mapping, Stream sediment geochemistry, rock chip geochemistry and drilling</td></tr><tr><td>1984</td><td>Mapping and drainage panned concentrate geochemistry. Grid soil geochemistry and minor rock chip sampling at Spring Creek and Old Ballarat. Soil geochemistry grid and</td></tr></table>	Year	Company	Prospects	Exploration Activity Completed	1965	Mount Isa Mines	Mt Everest (Cu)	Field investigations of copper deposits in the Woolomin Fm east of Upper Bingara	1969 - 1970	Silver Valley Minerals NL	Upper Bingara (Au), Mt Everest (Cu), Withers (Cu), Harrision’s (Ni-Cu)	Drainage, rock chip and soil geochemistry in the upper Bingara area. Four separate reconnaissance ground Induced Polarisation (IP) surveys over the Everest (Cu), Withers (Cu), Tea Tree (Cu) and Young Property (Cu-Ni) prospects. Percussion and diamond drilling. No gold assays	1971	Nickel Mines	Bingara - Warialda	Reconnaissance rock chip sampling	1974	Electrolytic Zinc	Reconnaissance	Extensive stream sediment sampling and field investigations cyprus-style copper deposits within the Woolomin Fm, particularly at Gulf creek Mine.	1982	Newmont	Gulf Creek (Cu), Mt Everest (Cu)	Geological mapping and rock chip sampling. Investigated potential for significant base metal deposits and gold in chert horizons.	1983	Freeport Australia	Old Ballarat (Au), Spring Creek (Au), Emello (Cu)	In JV with Tingha Holdings. Geological Mapping, Stream sediment geochemistry, rock chip geochemistry and drilling	1984	Mapping and drainage panned concentrate geochemistry. Grid soil geochemistry and minor rock chip sampling at Spring Creek and Old Ballarat. Soil geochemistry grid and
Year	Company	Prospects	Exploration Activity Completed																													
1965	Mount Isa Mines	Mt Everest (Cu)	Field investigations of copper deposits in the Woolomin Fm east of Upper Bingara																													
1969 - 1970	Silver Valley Minerals NL	Upper Bingara (Au), Mt Everest (Cu), Withers (Cu), Harrision’s (Ni-Cu)	Drainage, rock chip and soil geochemistry in the upper Bingara area. Four separate reconnaissance ground Induced Polarisation (IP) surveys over the Everest (Cu), Withers (Cu), Tea Tree (Cu) and Young Property (Cu-Ni) prospects. Percussion and diamond drilling. No gold assays																													
1971	Nickel Mines	Bingara - Warialda	Reconnaissance rock chip sampling																													
1974	Electrolytic Zinc	Reconnaissance	Extensive stream sediment sampling and field investigations cyprus-style copper deposits within the Woolomin Fm, particularly at Gulf creek Mine.																													
1982	Newmont	Gulf Creek (Cu), Mt Everest (Cu)	Geological mapping and rock chip sampling. Investigated potential for significant base metal deposits and gold in chert horizons.																													
1983	Freeport Australia	Old Ballarat (Au), Spring Creek (Au), Emello (Cu)	In JV with Tingha Holdings. Geological Mapping, Stream sediment geochemistry, rock chip geochemistry and drilling																													
1984			Mapping and drainage panned concentrate geochemistry. Grid soil geochemistry and minor rock chip sampling at Spring Creek and Old Ballarat. Soil geochemistry grid and																													

Criteria	JORC Code explanation	Commentary			
					follow-up trenching and rock chip sampling at Emello.
		1985		Upper Bingara (Au), Spring Creek (Au), Emello (Cu), Lone Hand (Au), Hidden Treasure (Au), Skain and Hodder's (Au)	Drilling of geochemical anomalies at Upper Bingara and Spring Creek. Further mapping and pan concentrate drainage sampling between Spring Creek and Lone Hand. Drilling at Hidden Treasure and Skain and Hodders prospects.
		1986	Tingha Holdings	Spring Creek (Au), Old Ballarat (Au)	Extension of Freeports soil grids at Spring Creek
		1987			Geological mapping and rock chip sampling at Old Ballarat
		1988			Geological Mapping and channel sampling at Spring Creek
		1988	Tingha - Noonan	Spring Creek (Au)	Drilling (20 RAB holes) at Spring Creek. Metallurgical testing
		1989		Spring Creek Alluvial (Au)	Assessing alluvial potential
		1989	CRA Exploration	Bora Creek (Au), Carnies Reef (Au), Upper Bora (Au-Cu), Mt Everest (Cu)	Reconnaissance visits of old mine sites, regional stream sediment sampling, gridding, sampling, and ground magnetics surveys at Upper Bora and Mt Everest
		1989		Bora Creek (Au), All Nations (Au), Lost Chance (Au)	Mapping, rock chip sampling and I.P. surveys undertaken
		1990		All Nations (Au), Upper Bora (Au), Lost Chance (Au) Basin (Au) & Basin South (Au)	Drilling at All Nations, Upper Bora ad Lost Chance. Further reconnaissance stream sediment sampling. Soil sampling at Basin and Basin South anomalies
		1990		Lost Chance (Au), Basin (Au) & Basin South (Au)	Moving loop EM and drilling at Basin prospect. Further soil sampling at Basin South and Lost Chance
		1991		Piedmont Magnesite (Au), Mt Everest (Cu)	Drilling at Piedmont Magnesite prospect.
		1992 - 1993	Danamore	Spring Creek (Au)	Geological modelling and re-evaluation of previous drilling
		1994	Decade Mining	Spring Creek (Au), Hidden Treasure (Au)	Drilling at Spring Creek-Hidden Treasure prospect

Criteria	JORC Code explanation	Commentary											
		2002 - 2008	Rimfire Pacific	Spring Creek (Au), Lost Chance (Au)	Extensive geochemistry sampling program in the Spring Creek area (stream sediments, soils and rock chip samples)								
		2008	Overlander Resources	Mt Everest (Cu), Bingara North (Au)	Geological surface mapping of the Everest Copper Mine, soil sampling of the pit workings and selected rock chip sampling at Mt Everest, Bingara North and Harrison's. Drilling of the Harrison's Cu prospect.								
		2008	Icon Resources	Reconnaissance (Au)	Selected reconnaissance rock chip sampling along the Peel fault								
		2007 - 2010	Young & Young	Reconnaissance (Au), Hilda May (Cu), Hidden Treasure (Au), Wedding Cake Hill (Au)	Geological mapping and soil and rock chip geochemistry,								
		2014 - 2015	Peel North Gold	Reconnaissance (Au)	Soil and rock chip geochemistry								
		2014 - 2015	Precious Metal Resources	Spring Creek (Au)	Rock chip geochemistry, traversing of old pits/workings and rock chip sampling around the Spring Creek area.								
<b>EL 8692 Nundle</b>													
<ul style="list-style-type: none"><li>The Nundle goldfield is a historic mining area with initial discoveries made in 1849. Between 1849 and 1944, the goldfield produced some 8,000kg of Au from alluvial workings in the Bowling Alley Point, Peel River and Hanging Rock fields.</li><li>The exploration and mining techniques employed between 1849 and 1911 were basic at best, and the application of modern exploration to this aged goldfield has a high potential of delineating further economic mineralisation along strike and at depth from these proven historic deposits. Modern exploration is limited to a shallow RC program completed by Caledonian Pacific Minerals N.L, in 1996. Historic Exploration is summarised below:</li></ul>													
<table><tr><th>Start Date</th><th>End Date</th><th>Company</th><th>Exploration Activity Completed</th></tr><tr><td>1966-12-01</td><td>1967-12-01</td><td>Planet Mining Company Pty Limited</td><td>Regional aeromagnetics survey flown with anomalies/magnetic highs identified. Geological mapping and stream sediment sampling conducted. Surrendered as failed to locate any indications of economic deposits of nickel or other base metals.</td></tr></table>						Start Date	End Date	Company	Exploration Activity Completed	1966-12-01	1967-12-01	Planet Mining Company Pty Limited	Regional aeromagnetics survey flown with anomalies/magnetic highs identified. Geological mapping and stream sediment sampling conducted. Surrendered as failed to locate any indications of economic deposits of nickel or other base metals.
Start Date	End Date	Company	Exploration Activity Completed										
1966-12-01	1967-12-01	Planet Mining Company Pty Limited	Regional aeromagnetics survey flown with anomalies/magnetic highs identified. Geological mapping and stream sediment sampling conducted. Surrendered as failed to locate any indications of economic deposits of nickel or other base metals.										



Criteria	JORC Code explanation	Commentary			
		1969-07-01	1971-07-01	Serpentine Minerals NL	Limited work completed but did sample old gold workings.
		1969-12-01	1970-12-01	Nickel Mines Limited	Work included geological mapping and rock chip and costean sampling.
		1972-11-01	1973-11-01	Planet Mining Company Pty Limited	Limited work completed (geological mapping), however good photographs in report of some old working. Renewal application rejected.
		1979-08-01	1981-11-01	Probex Pty Limited	Work included stream sediment sampling. Production figures listed. Surrendered as limited economic potential of chromite pods identified
		1982-06-01	1982-11-01	Newmont Holdings Pty Ltd	Work conducted included geological mapping and rock chip sampling. Relinquished as the work indicated little potential for economic mineralisation.
		1985-01-01	1986-04-01	J.A. Hay & E.B.C. DuMoulin	Costeaning and some stream sediment samples collected.
		1985-01-01	1986-04-01	J.A. Hay & E.B.C. DuMoulin	Costeaning and some stream sediment samples conducted.
		1987-03-01	1990-12-01	Mumbil Mines NL	Investigation of mineralisation over several prospects but mapping and assay data cannot be georeferenced. Relinquished as based on results it was believed tonnage of gold available would not support modern mining operations (1987).
		1987-05-01	1989-03-01	Mumbil Mines NL	Limited exploration on ground, consultant report main body of work. Only 3 rock chips taken. Relinquished as economic conditions limited funds for exploration.
		1989-05-01	1990-11-01	Delta Gold NL	Soil samples completed over main prospect. Relinquished as mullock heap assays suggested inconsistent grades and it was not believed a viably recoverable ore was present

Criteria	JORC Code explanation	Commentary			
		1991-03-05	2007-03-06	Kelson H C	EL3784 was a tenement which largely focussed on the Black Snake and Brown Snake historic workings. The primary focus of works was to clear the collapsed adits and shafts for the purposes of historic mining tourism. The efforts of the individual are noted in several newspaper clipping attached with reports. No assay samples were collected but dollying established the quartz was gold bearing. Tenement ultimately relinquished in 2007 after no work completed since 2004.
<b>Geology</b>	<ul style="list-style-type: none"> <li>Deposit type, geological setting and style of mineralisation.</li> </ul>	<ul style="list-style-type: none"> <li>EL 8574, EL 8800 &amp; EL 8692 are located within the New England Fold Belt (NEFB) of the Tasman Orogenic system. The NEFB is a complex tectonic collage of amalgamated, accreted and fault bound terranes which formed as part of the Tasman Orogenic system, a Cambrian to early Ordovician extensional accretionary orogen of Gondwana that can be divided into the following fault-bound terranes with differing tectonic environments: <ul style="list-style-type: none"> <li>Weraeraai Terrane: dismembered ophiolite sequence;</li> <li>Gamilaroi Terrane: early Devonian remnant intra-oceanic arc;</li> <li>Djungati Terrane: middle–late Devonian subduction complex;</li> <li>Anaiwan Terrane: lower–middle Devonian arc derived volcanoclastic sediments.</li> </ul> </li> <li>Both projects are truncated by the roughly N-S trending Peel Manning Fault System (PMFS). The PMFS is a major west-dipping fault zone, that extends over a length of 270 km and represents a major geological structure that juxtaposes geological terranes.</li> <li>Along the PMFS mineralisation includes gold, mercury, antimony, copper-gold, magnesite, and veins and podiform chromite.</li> <li>The exploration model for the Bingara and Nundle involves potential to host bulk tonnage, low-grade gold and fissure vein high grade gold deposits and volcanic hosted massive sulphide copper – gold – zinc deposits (Mother Lode Systems).</li> <li>Mother Lode style mineralisation is an orogenic gold subtype that resembles typical Archean orogenic gold deposits that are spatially</li> </ul>			

Criteria	JORC Code explanation	Commentary
		<p>related to well-defined major fault zones, although usually with deposits locally situated along second or third order structures. As a result, such targets are typically reasonably large tonnages of relatively low-grade gold but can also produce fissure vein hosted lower tonnage high grade deposits.</p> <ul style="list-style-type: none"> <li>At Bingara potential also exists to identify Besshi-Cyprus style volcanic hosted massive sulphide (VHMS) deposits formed from the precipitation of high sulphur fluids in deep marine volcanic terranes, close to the seawater-seafloor interface and are potentially economic concentrations of copper, zinc and silver mineralisation.</li> <li>At Nundle potential also exists to identify subtle 'Carlin-style' disseminated, sediment-hosted gold within areas of decalcified, calcareous sediments identified to the west of the PMFS and epigenetic Cu-Au systems spatially associated with altered, Early Devonian intrusives.</li> </ul> <p><b>EL 8574 and EL 8800 Bingara &amp; All Nations</b></p> <ul style="list-style-type: none"> <li>At Bingara the PMFS juxtaposes the Gamilaroi Terraine to the west, composed of a broadly folded island arc derived sediments, against the Weraerai Terrane, of variably schistose and serpentinitised ophiolite sequence from the strongly deformed and lower greenschist metamorphosed.</li> <li>The fault-bound Weraerai Terrane is postulated as structurally emplaced via strike-slip faulting and serpentinite diapirism in the early Permian. Permo-Triassic calc-alkaline volcanics and granitoids postdate emplacement of the deformed assemblage and are associated with widespread carbonate-fuchsite (listwanite) alteration.</li> <li>Listwanite alteration is commonly associated with vein gold deposits, which, together with less common stockwork and disseminated gold deposits, are developed within and immediately to the east and west of the serpentinite (Bingara goldfields).</li> <li>Gold mineralisation is predominantly hosted by Werarei Terrane serpentinites and Djungati Terrane Woolomin Group. However, some</li> </ul>

Criteria	JORC Code explanation	Commentary
		<p>deposits including the All-Nations gold mine are hosted by sediments of the Tamworth group belonging to the Gamilaroi Terrane.</p> <p><i>The Hidden Treasure – Spring Creek Trend</i></p> <ul style="list-style-type: none"> <li>• The Spring Creek area includes many listed historical gold workings on a broad network of veins, or in silicified metasediments and altered serpentinite (presumably as disseminations). Mineralisation is related to a shallow east dipping zone of quartz-carbonate veinlets and disseminated sulphides localised at the contact between altered basaltic volcanics and carbonaceous shale.</li> <li>• Gold mineralisation has been described as coarse disseminations within metasediments, with higher grades present in the host metasediments rather than quartz veins that are up to 30 cm thick.</li> <li>• The mineralisation has not been closed off along strike or down dip, with historic workings and soil anomalies continuously encountered along the sheared lower basalt contact to the north and south.</li> </ul> <p><i>Lone Hand</i></p> <ul style="list-style-type: none"> <li>• Mineralisation is associated with small irregular quartz veins associated with granite and feldspar porphyry dykes within fine grained well bedded slates, sandstones, and greywackes that are rhythmically interbedded with fine-grained tuffs and feldspar porphyry tuffs.</li> <li>• The line of reef strikes northeast and dips northwest at 70 degrees.</li> </ul> <p><i>Mt Everest</i></p> <ul style="list-style-type: none"> <li>• The historical Mount Everest Copper Mine was one of the largest copper deposits to be worked out of a number of Besshi-Cyprus Volcanic Hosted Massive Sulphide (VHMS) copper discoveries within the Woolomin Beds along the eastern edge of the serpentinite belt.</li> <li>• Exposure was generally poor however the reported mapped geology of the Prospect area outlined a sequence of predominantly steeply dipping fine-grained metasediment (phyllite and metasiltstone) and chert beds striking north-westerly, with occasional ironstones beneath a metabasalt/andesite sequence.</li> </ul> <p><i>Fentons</i></p>

Criteria	JORC Code explanation	Commentary
		<ul style="list-style-type: none"> <li>Manganese silicate mineralisation (primarily rhodonite) hosted by chert/jasper sequences occurring within undifferentiated medasediments of the Central Block considered possible equivalents to Cara or Whitlow Formations.</li> <li>Ore genesis is considered chemical sediment of submarine volcanic exhalative.</li> </ul> <p><b>EL 8692 Nundle</b></p> <ul style="list-style-type: none"> <li>Within the Nundle project the PMFS separates Woolomin Group, comprising Silurian to Devonian siliciclastic and biochemical deep marine sediments of the Myra Beds. This unit comprises slate, phyllite, chert, jasper, extrusive and intrusive metabasalts and minor lithic wacke from the early to middle Devonian Tamworth Group.</li> <li>To the west of the Tamworth Group, lying along the western margin of the tenement, lie rocks of the Parry Group, which includes rocks of the Mandowa Mudstone and Noumea beds, both representing shallow, siliciclastic marine environments.</li> <li>Structurally emplaced within the Woolomin and Tamworth Groups are serpentinites of the Woodsreef Melange. These are Early Cambrian schistose, sheared and variously altered serpentinite, gabbro and dolerite. Silica- to carbonate-rich hypogene replacement of these serpentinites has occurred in the southern portion of the tenement.</li> <li>Also structurally emplaced are marine rocks of the Manning Group which comprise Early Permian diamictite, conglomerate, sandstone, mudstone, felsic and intermediate volcanics and limestone.</li> <li>Intruded into these rocks are I-type granites of the Clarence River Supersuite, comprising calcic and sodic diorites, tonalites and granodiorites</li> <li>All economically important gold reefs in the Nundle area occur either wholly or partly in doleritic intrusions within the Devonian Tamworth Group. These reefs appear to have formed after ultramafic intrusions were emplaced, possibly during the late stages of development of the PMFS in either the Late Carboniferous or Permian, at shallow depths possibly in a geothermal system beneath dry land</li> </ul>

Criteria	JORC Code explanation	Commentary
		<p><i>The Folly Line</i></p> <ul style="list-style-type: none"> <li>• The geology along the Folly Line is highly variable including massive unaltered diorite, mudstone, sandstone and cherts.</li> <li>• Gold mineralisation occurs as a shear and quartz vein reef system with a widespread alteration zone associated with very low-grade gold mineralisation.</li> <li>• Alteration consists of variable silicification, quartz veining, calcsilicate alteration, chlorite and sericite alteration (listvenite alteration).</li> <li>• Minor disseminated pyrite and very minor arsenopyrite are also present and associated with the alteration zone.</li> <li>• The type of alteration and the extent of the zones indicates the potential for bulk tonnage Mother Lode style mineralisation.</li> </ul> <p><i>Back Barb</i></p> <ul style="list-style-type: none"> <li>• Host rocks to mineralisation are mainly altered felsic intrusives (granophyre) attributed to the Barry River Complex and adjacent mafic volcanics within the Woolomin Beds ophiolitic sequence.</li> <li>• The Barry River Complex consists of serpentinites and trondhjemites with lesser gabbros, dolerites, diorites tonalites and quartz-feldspar porphyries.</li> <li>• Mineralisation is characterised by an association of chalcopyrite, secondary copper minerals, and pyrite with calcite and hematite in veins up to 40 mm associated with shears and fractures.</li> </ul> <p><i>Barnard Hut</i></p> <ul style="list-style-type: none"> <li>• Occurring within a 3km long northerly trending shear zone along the contact between the Gogs Top Trondhjemite and the Barry Igneous Complex.</li> <li>• Mineralisation consists of a chalcopyrite and secondary copper minerals in a quartz-calcite vein in altered granophyre which is exposed over a length of about 20m with a width of about 1.2m in some shallow pits and benches.</li> </ul>



Criteria	JORC Code explanation	Commentary																																																																																																																																								
<b>Drill hole Information</b>	<ul style="list-style-type: none"><li>A summary of all information material to the understanding of the exploration results including a tabulation of the following information for all Material drill holes:<ul style="list-style-type: none"><li>easting and northing of the drill hole collar</li><li>elevation or RL (Reduced Level – elevation above sea level in metres) of the drill hole collar</li><li>dip and azimuth of the hole</li><li>down hole length and interception depth</li><li>hole length.</li></ul></li><li>If the exclusion of this information is justified on the basis that the information is not Material and this exclusion does not detract from the understanding of the report, the Competent Person should clearly explain why this is the case.</li></ul>	<b>EL 8574 and EL 8800 Bingara &amp; All Nations</b>																																																																																																																																								
		<u>Spring Creek Drilling</u>																																																																																																																																								
			<table><tr><th>Hole ID</th><th>Easting MGA2020</th><th>Northing MGA2020</th><th>RL</th><th>Depth</th><th>Dip</th><th>Magnetic Azimuth</th><th>Company</th><th>Year</th></tr><tr><td>PDHSC8</td><td>269109</td><td>6688347</td><td>507</td><td>11.5</td><td>-60</td><td>235</td><td>Freeport Australia Pty Ltd</td><td>1985</td></tr><tr><td>PDHSC8R</td><td>269109</td><td>6688347</td><td>507</td><td>71</td><td>-60</td><td>235</td><td>Freeport Australia Pty Ltd</td><td>1985</td></tr><tr><td>PDHSC9</td><td>269083</td><td>6688180</td><td>525</td><td>39</td><td>-60</td><td>253</td><td>Freeport Australia Pty Ltd</td><td>1985</td></tr><tr><td>PDHSC10</td><td>269121</td><td>6688044</td><td>536</td><td>60</td><td>-60</td><td>270</td><td>Freeport Australia Pty Ltd</td><td>1985</td></tr><tr><td>PDHSC11</td><td>269107</td><td>6688265</td><td>515</td><td>51</td><td>-59</td><td>270</td><td>Freeport Australia Pty Ltd</td><td>1985</td></tr><tr><td>SC12</td><td>269132</td><td>6688043</td><td>536</td><td>32</td><td>-90</td><td>0</td><td>Tinga Holdings Pty Ltd</td><td>1988</td></tr><tr><td>SC13</td><td>269097</td><td>6688035</td><td>538</td><td>24</td><td>-90</td><td>0</td><td>Tinga Holdings Pty Ltd</td><td>1988</td></tr><tr><td>SC14</td><td>269115</td><td>6688039</td><td>537</td><td>30</td><td>-90</td><td>0</td><td>Tinga Holdings Pty Ltd</td><td>1988</td></tr><tr><td>SC15</td><td>269106</td><td>6688073</td><td>526</td><td>15</td><td>-90</td><td>0</td><td>Tinga Holdings Pty Ltd</td><td>1988</td></tr><tr><td>SC16</td><td>269126</td><td>6688069</td><td>528</td><td>39</td><td>-90</td><td>0</td><td>Tinga Holdings Pty Ltd</td><td>1988</td></tr><tr><td>SC17</td><td>269120</td><td>6688056</td><td>533</td><td>18</td><td>-90</td><td>0</td><td>Tinga Holdings Pty Ltd</td><td>1988</td></tr><tr><td>SC18</td><td>269090</td><td>6688054</td><td>533</td><td>14</td><td>-90</td><td>0</td><td>Tinga Holdings Pty Ltd</td><td>1988</td></tr><tr><td>SC19</td><td>269034</td><td>6688115</td><td>536</td><td>26</td><td>-90</td><td>0</td><td>Tinga Holdings Pty Ltd</td><td>1988</td></tr><tr><td>SC20</td><td>269030</td><td>6688134</td><td>535</td><td>18</td><td>-90</td><td>0</td><td>Tinga Holdings Pty Ltd</td><td>1988</td></tr></table>	Hole ID	Easting MGA2020	Northing MGA2020	RL	Depth	Dip	Magnetic Azimuth	Company	Year	PDHSC8	269109	6688347	507	11.5	-60	235	Freeport Australia Pty Ltd	1985	PDHSC8R	269109	6688347	507	71	-60	235	Freeport Australia Pty Ltd	1985	PDHSC9	269083	6688180	525	39	-60	253	Freeport Australia Pty Ltd	1985	PDHSC10	269121	6688044	536	60	-60	270	Freeport Australia Pty Ltd	1985	PDHSC11	269107	6688265	515	51	-59	270	Freeport Australia Pty Ltd	1985	SC12	269132	6688043	536	32	-90	0	Tinga Holdings Pty Ltd	1988	SC13	269097	6688035	538	24	-90	0	Tinga Holdings Pty Ltd	1988	SC14	269115	6688039	537	30	-90	0	Tinga Holdings Pty Ltd	1988	SC15	269106	6688073	526	15	-90	0	Tinga Holdings Pty Ltd	1988	SC16	269126	6688069	528	39	-90	0	Tinga Holdings Pty Ltd	1988	SC17	269120	6688056	533	18	-90	0	Tinga Holdings Pty Ltd	1988	SC18	269090	6688054	533	14	-90	0	Tinga Holdings Pty Ltd	1988	SC19	269034	6688115	536	26	-90	0	Tinga Holdings Pty Ltd	1988	SC20	269030	6688134	535	18	-90	0	Tinga Holdings Pty Ltd	1988
		Hole ID	Easting MGA2020	Northing MGA2020	RL	Depth	Dip	Magnetic Azimuth	Company	Year																																																																																																																																
		PDHSC8	269109	6688347	507	11.5	-60	235	Freeport Australia Pty Ltd	1985																																																																																																																																
		PDHSC8R	269109	6688347	507	71	-60	235	Freeport Australia Pty Ltd	1985																																																																																																																																
		PDHSC9	269083	6688180	525	39	-60	253	Freeport Australia Pty Ltd	1985																																																																																																																																
		PDHSC10	269121	6688044	536	60	-60	270	Freeport Australia Pty Ltd	1985																																																																																																																																
		PDHSC11	269107	6688265	515	51	-59	270	Freeport Australia Pty Ltd	1985																																																																																																																																
		SC12	269132	6688043	536	32	-90	0	Tinga Holdings Pty Ltd	1988																																																																																																																																
		SC13	269097	6688035	538	24	-90	0	Tinga Holdings Pty Ltd	1988																																																																																																																																
		SC14	269115	6688039	537	30	-90	0	Tinga Holdings Pty Ltd	1988																																																																																																																																
		SC15	269106	6688073	526	15	-90	0	Tinga Holdings Pty Ltd	1988																																																																																																																																
		SC16	269126	6688069	528	39	-90	0	Tinga Holdings Pty Ltd	1988																																																																																																																																
		SC17	269120	6688056	533	18	-90	0	Tinga Holdings Pty Ltd	1988																																																																																																																																
		SC18	269090	6688054	533	14	-90	0	Tinga Holdings Pty Ltd	1988																																																																																																																																
		SC19	269034	6688115	536	26	-90	0	Tinga Holdings Pty Ltd	1988																																																																																																																																
		SC20	269030	6688134	535	18	-90	0	Tinga Holdings Pty Ltd	1988																																																																																																																																

Criteria	JORC Code explanation	Commentary								
		SC21	269025	6688137	534	14	-90	0	Tinga Holdings Pty Ltd	1988
		SC22	269074	6688158	527	27	-90	0	Tinga Holdings Pty Ltd	1988
		SC23	269055	6688155	527	27	-90	0	Tinga Holdings Pty Ltd	1988
		SC24	269089	6688149	528	26	-90	0	Tinga Holdings Pty Ltd	1988
		SC25	269103	6688159	526	25	-90	0	Tinga Holdings Pty Ltd	1988
		SC26	269045	6688173	524	12	-90	0	Tinga Holdings Pty Ltd	1988
		SC27	269059	6688170	522	31	-90	0	Tinga Holdings Pty Ltd	1988
		SC28	269095	6688181	524	25	-90	0	Tinga Holdings Pty Ltd	1988
		SC29	269060	6688196	517	12	-90	0	Tinga Holdings Pty Ltd	1988
		SC30	269077	6688190	521	18	-90	0	Tinga Holdings Pty Ltd	1988
		SC31	269094	6688204	517	18	-90	0	Tinga Holdings Pty Ltd	1988
		SCDH1	268942	6688633	500	137.25	-49	251	Freeport Australia Pty Ltd	1984
		SCDH2	269070	6688134	528	38	-50	270	Freeport Australia Pty Ltd	1984
		SCDH3	269113	6688179	523	33	-48	235	Freeport Australia Pty Ltd	1984
		SCDH4	269030	6688167	529	14	-61.5	274	Freeport Australia Pty Ltd	1984
		SCDH5	269054	6688173	522	25	-65	270	Freeport Australia Pty Ltd	1984

Criteria	JORC Code explanation	Commentary								
		SCDH6	269110	6688347	507	1.5	0	0	Freeport Australia Pty Ltd	1984
		SCDH7	269124	6688181	521	98	-57	238	Freeport Australia Pty Ltd	1984
		SCRC1	269090	6688395	496	36	-90	0	Decade Mining Resource NL	1996
		SCRC2	269145	6687990	538	62	-60	250	Decade Mining Resource NL	1996
		SCRC3	269093	6687973	547	50	-60	250	Decade Mining Resource NL	1996
		SCRC4	269080	6687927	543	36	-60	250	Decade Mining Resource NL	1996
		SCRC5	269126	6687932	533	62	-60	250	Decade Mining Resource NL	1996
		SCRC6	269086	6688234	510	50	-60	250	Decade Mining Resource NL	1996
		SCRC7	269115	6688241	517	46	-60	250	Decade Mining Resource NL	1996
		SCRC8	269101	6688363	500	71	-77	280	Decade Mining Resource NL	1996
		SCRC9	269114	6688099	518	40	-61	70	Decade Mining Resource NL	1996
		SCRC10	269083	6688582	476	46	-65	240	Decade Mining Resource NL	1996
		SCRC11	269060	6688705	472	76	-65	240	Decade Mining	1996

Criteria	JORC Code explanation	Commentary							
								Resource NL	
	SCRC12	269067	6688765	482	67	-60	240	Decade Mining Resource NL	1996
	SCRC13	269130	6688587	485	64	-60	255	Decade Mining Resource NL	1996
<b>EL 8692 Nundle</b>									
<b>Folly Line Drilling</b>									
Hole ID	Easting MGA2020	Northing MGA2020	RL	Depth	Dip	Magnetic Azimuth	Company	Year	
NGDP1	327449	6519275	1107	56	-60	100	Caledonian Pacific Minerals N.L	1996	
NGDP2	327426	6519283	1107	56	-60	98	Caledonian Pacific Minerals N.L	1996	
NGDP3	327464	6519270	1107	50	-58	280	Caledonian Pacific Minerals N.L	1996	
NGDP4	327444	6518857	1104	50	-55	30	Caledonian Pacific Minerals N.L	1996	
NGDP5	327461	6518876	1103	50	-60	40	Caledonian Pacific Minerals N.L	1996	
NGDP6	327472	6518893	1103	50	-60	250	Caledonian Pacific Minerals N.L	1996	
NGDP7	327245	6519912	1008	100	-45	85	Caledonian Pacific Minerals N.L	1996	
NGDP8	327290	6519858	1017	50	-60	140	Caledonian Pacific Minerals N.L	1996	
NGDP9	327371	6519733	1028	100	-50	260	Caledonian Pacific Minerals N.L	1996	
NGDP10	327443	6519277	1107	66	-65	95	Caledonian Pacific Minerals N.L	1996	

Criteria	JORC Code explanation	Commentary																		
		<table><tr><td>NGDP1 1</td><td>327444</td><td>6519277</td><td>110 7</td><td>65</td><td>-90</td><td>0</td><td>Caledonian Pacific Minerals N.L</td><td>199 6</td></tr><tr><td>NGDP1 2</td><td>327129</td><td>6520174</td><td>966</td><td>100</td><td>-45</td><td>83</td><td>Caledonian Pacific Minerals N.L</td><td>199 6</td></tr></table>	NGDP1 1	327444	6519277	110 7	65	-90	0	Caledonian Pacific Minerals N.L	199 6	NGDP1 2	327129	6520174	966	100	-45	83	Caledonian Pacific Minerals N.L	199 6
NGDP1 1	327444	6519277	110 7	65	-90	0	Caledonian Pacific Minerals N.L	199 6												
NGDP1 2	327129	6520174	966	100	-45	83	Caledonian Pacific Minerals N.L	199 6												
<b>Data aggregation methods</b>	<ul style="list-style-type: none"><li>In reporting Exploration Results, weighting averaging techniques, maximum and/or minimum grade truncations (eg cutting of high grades) and cut-off grades are usually Material and should be stated.</li><li>Where aggregate intercepts incorporate short lengths of high grade results and longer lengths of low grade results, the procedure used for such aggregation should be stated and some typical examples of such aggregations should be shown in detail.</li><li>The assumptions used for any reporting of metal equivalent values should be clearly stated.</li></ul>	<ul style="list-style-type: none"><li>Composites for drilling results at Spring Creek and The Folly Line use a 0.3 g/t Au cut off grade with up to 2 m of internal dilution. Composites at a 2.0g/t Au cut off grade are also reported for Spring Creek.</li><li>No metal equivalents are reported.</li></ul>																		
<b>Relationship between mineralisation widths and intercept lengths</b>	<ul style="list-style-type: none"><li>These relationships are particularly important in the reporting of Exploration Results.</li><li>If the geometry of the mineralisation with respect to the drill hole angle is known, its nature should be reported.</li><li>If it is not known and only the down hole lengths are reported, there should be a clear statement to this effect (eg ‘down hole length, true width not known’).</li></ul>	<ul style="list-style-type: none"><li>All drill intercepts are reported as downhole widths.</li><li>Spring Creek 4.5 km N-S mineralised trend. Drilling is orientated perpendicular or close to perpendicular the strike of the mineralised trend. Mineralisation dips shallowly (20-30 degrees) to the east. Holes have been drilled vertically or at -77 to -48 dips to minimise sample bias.</li><li>The Folly Line is a 1.7 km N-S mineralised trend. Drilling is orientated perpendicular the strike of the mineralised trend. Mineralisation dips steeply to the west at 80-90 degrees. Drilling has been completed at -60 to -45 dips to minimize sample bias.</li></ul>																		
<b>Diagrams</b>	<ul style="list-style-type: none"><li>Appropriate maps and sections (with scales) and tabulations of intercepts should be included for any significant discovery being reported. These should include, but not be limited to a plan view of</li></ul>	<ul style="list-style-type: none"><li>Refer to maps included in this announcement.</li></ul>																		

Criteria	JORC Code explanation	Commentary
	drill hole collar locations and appropriate sectional views.	
<b>Balanced reporting</b>	<ul style="list-style-type: none"> <li>Where comprehensive reporting of all Exploration Results is not practicable, representative reporting of both low and high grades and/or widths should be practiced to avoid misleading reporting of Exploration Results.</li> </ul>	<ul style="list-style-type: none"> <li>See “Cautionary Statement – Historic Data” in the main body of announcement</li> </ul>
<b>Other substantive exploration data</b>	<ul style="list-style-type: none"> <li>Other exploration data, if meaningful and material, should be reported including (but not limited to): geological observations; geophysical survey results; geochemical survey results; bulk samples – size and method of treatment; metallurgical test results; bulk density, groundwater, geotechnical and rock characteristics; potential deleterious or contaminating substances.</li> </ul>	<p><b>Nundle</b></p> <ul style="list-style-type: none"> <li>A magnetics survey was completed by Geoterrex for Caledonian Pacific Minerals N.L in 1997 over the Folly Line. The survey used a cesium split-beam total magnetic sensor with a sampling interval of 0.1 seconds and an inflight sensitivity of 0.01 nT. A proton magnetometer with digital recording was operated continuously through acquisition with a sample interval of 5 second and sensitivity of 0.5 nT. The survey was re-processed by RAMA geophysics in 2020. A 3D inversion was completed using mGinv3D from Scientific Computing and Applications. The inversions were unconstrained.</li> </ul> <p><b>Barnard Hut &amp; Back Barb</b></p> <ul style="list-style-type: none"> <li>Copper mineralisation at these prospects was explored between 1970 and 1972 with limited surface mapping and reconnaissance trenching at Barnard Hut and trenching and an exploration adit at Back Barb. Additional exploration was carried out in 2008 which included project level airborne magnetics and a small soil grid over the Back Barb prospect.</li> <li>The initial phase of trenching work in 1971 included 376 channel samples from a series of trenches that targeted exposed zones of copper mineralisation in Barnard Hut. The report notes “strong traces of copper mineralisation over a strike length of approximately 2 miles” (approximately 3.2 kms). Assay results from the trenching indicate multiple zones of strong copper mineralisation over a length of 2,000 feet (approximately 610 m).</li> <li>See “<i>Exploration done by other parties</i>” for a detailed summary of exploration completed by other parties.</li> <li>A detailed summary of other substantive exploration data at Bingara</li> </ul>

Criteria	JORC Code explanation	Commentary
		and Nundle will be reporting following detailed data analysis post Acquisition.
<b>Further work</b>	<ul style="list-style-type: none"> <li>The nature and scale of planned further work (eg tests for lateral extensions or depth extensions or large-scale step-out drilling).</li> <li>Diagrams clearly highlighting the areas of possible extensions, including the main geological interpretations and future drilling areas, provided this information is not commercially sensitive.</li> </ul>	<ul style="list-style-type: none"> <li>Drone operated Sub-Audio Magnetotelluric (SAM) Fixed Loop Electromagnetics survey across key targets at Bingara.</li> <li>Reconnaissance geological mapping and sampling focused on the Folly Line gold workings and Barnard Hut Intrusion Related copper target areas at Nundle.</li> <li>The commencement of drill hole planning and permitting for the initial drill testing of the shallow east dipping zone of gold mineralisation at Spring Creek, Bingara.</li> <li>Cosmo will initiate the acquisition of new LIDAR coverage over the Folly Line at Nundle that can be used as a high-resolution mapping base to facilitate the generation of high impact drill targets.</li> </ul>