

## Q4 FY24 Quarterly Investor Presentation & Webinar

**Microba Life Sciences Limited** (ASX: MAP) (“Microba” or the “Company”) is pleased to provide below its Q4 FY24 Investor Presentation and Investor Webinar with CEO Dr Luke Reid and SVP, Therapeutics Prof. Trent Munro presenting.

### Quarterly Investor Presentation Webinar

**Presenting:** CEO, Dr Luke Reid and SVP, Therapeutics Prof. Trent Munro

**Webinar Access:** The Quarterly Investor Presentation Webinar can now be accessed on demand via Microba’s Investor Hub at the following link <https://ir.microba.com/link/aP3zxr>

### Investor Q&As

We invite investors and interested parties to submit questions on the Quarterly Investor Presentation & Webinar through the ‘Ask a question’ section of Microba’s interactive investor platform by following this link: [‘Ask a question’](#)

*This announcement has been authorised for release by the Board of Directors*

### For further information, please contact:

**Dr Luke Reid**

Chief Executive Officer

[luke.reid@microba.com](mailto:luke.reid@microba.com)

<https://ir.microba.com/welcome>

### About Microba Life Sciences Limited

Microba Life Sciences is a precision microbiome company driven to improve human health. With world-leading technology for measuring the human gut microbiome, Microba is driving the discovery and development of novel therapeutics for major chronic diseases and delivering gut microbiome testing services globally to researchers, clinicians, and consumers. Through partnerships with leading organisations, Microba is powering the discovery of new relationships between the microbiome, health and disease for the development of new health solutions. For more information visit [www.microba.com](http://www.microba.com)



### JOIN MICROBA'S INTERACTIVE INVESTOR HUB

Visit [ir.microba.com/welcome](https://ir.microba.com/welcome) for Microba’s interactive Investor Hub

**Microba Life Sciences Ltd** ABN 82 617 096 652 | Level 10, 324 Queen Street, Brisbane QLD 4000 Australia | 1300 974 621

**MiCROBA™**

# Combating disease through the microbiome

Q4 FY24 Results

**ASX: MAP**  
**25 July 2024**

Authorised for release by the Board of Directors

# Disclaimer

This presentation (**Presentation**) has been prepared by Microba Life Sciences Limited (**Microba**).

**Summary information** - This Presentation contains summary information about Microba and its activities which is current only as at the date of release of this Presentation. Microba may in its absolute discretion, but without being under any obligation to do so, update or supplement this Presentation. The information in this Presentation is of a general nature and does not purport to be complete nor does it contain all the information which a prospective investor may require in evaluating a possible investment in Microba or that would be required in a prospectus or other disclosure document prepared in accordance with the requirements of the *Corporations Act 2001* (Cth) (**Corporations Act**).

**Industry and market data** – In this Presentation, Microba refers to certain market, industry, and statistical data used in connection with this Presentation may have been obtained from research, surveys or studies conducted by third parties, including industry or general publications. Neither Microba nor its representatives have independently verified any such data and no representation or warranty, express or implied, is made as to its fairness, accuracy, correctness, completeness or adequacy. Some data is also based on the good faith estimates of Microba, which are derived its reviews of internal sources as well as the independent sources described above.

**Not an offer** - This Presentation is not a prospectus or other disclosure document under the Corporations Act and will not be lodged with the Australian Securities and Investments Commission. This Presentation is for information purposes only and is not an invitation or offer of securities for subscription, purchase or sale in any jurisdiction. The distribution of this Presentation (including electronically) outside Australia may be restricted by law. If you come into possession of this Presentation, you should observe such restrictions and should seek your own advice. Any non-compliance with these restrictions may contravene applicable securities laws.

**Not investment or medical advice** - The information contained in this Presentation is not investment, financial product advice, medical advice or any medical recommendation or recommendation to acquire Shares. This Presentation has been prepared without taking into account your investment objectives, financial situation, medical or any other particular needs. This Presentation does not and will not form any part of any contract for the acquisition of shares. Each recipient of this Presentation should make its own enquiries and investigations regarding all information in this Presentation. Before making an investment decision, you should consider whether it is a suitable investment for you in light of your own investment objectives, financial situation and particular needs and having regard to the merits or risks involved. Independent financial advice is recommended.

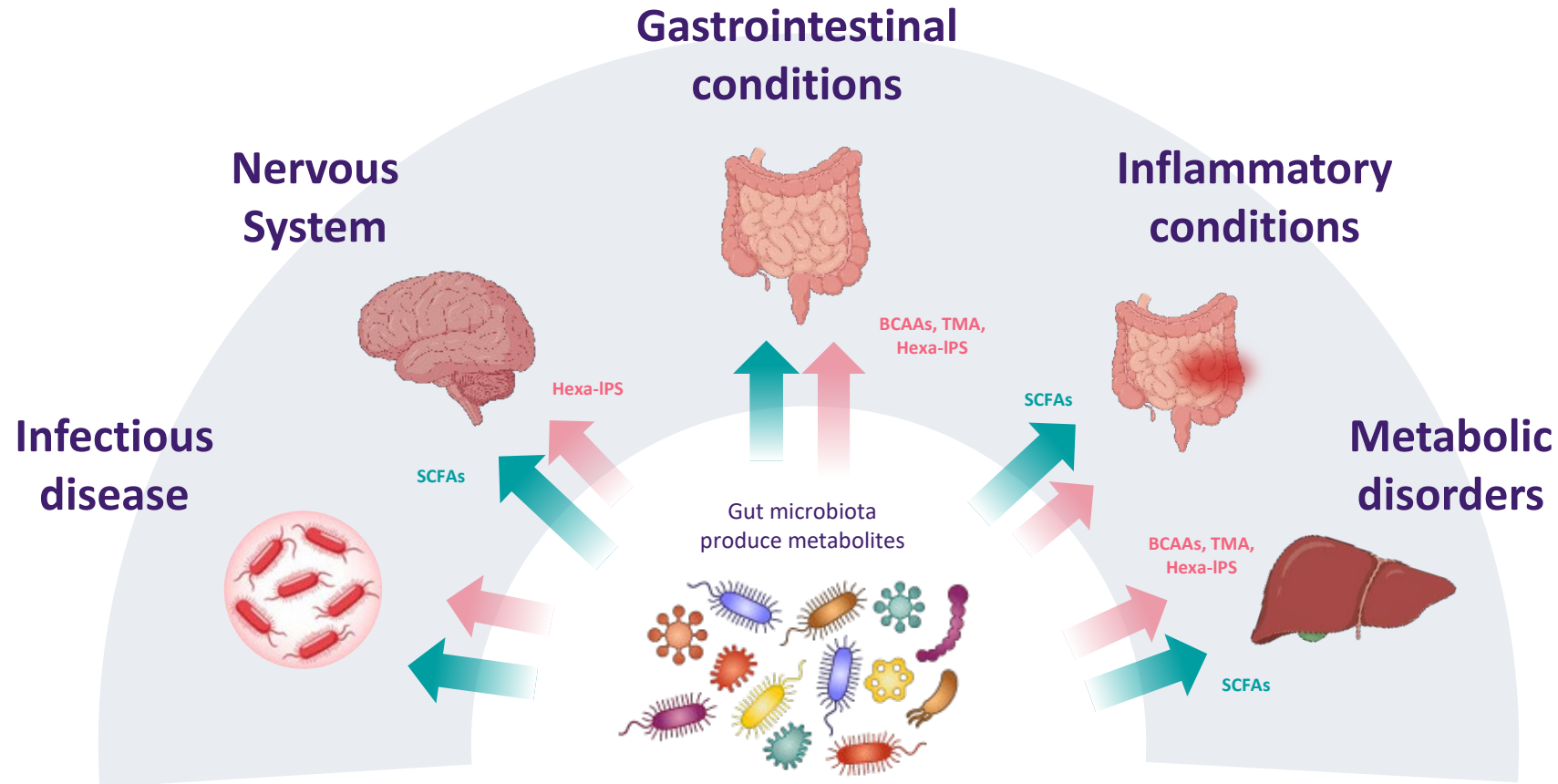
**Future performance** - This Presentation contains forward looking statements. Forward-looking statements generally relate to current expectations, hopes, beliefs, intentions, strategies or productions about future events or Microba's future financial or operating performance. For example, statements regarding anticipated growth in the industry in which Microba operates and anticipated growth in demand for Microba's products and services, projections of Microba's future financial results and other metrics are forward-looking statements. In some cases, you can identify forward-looking statements by terminology such as "pro forma", "may", "should", "could", "might", "plan", "possible", "project", "strive", "budget", "forecast", "expect", "intend", "will", "estimate", "anticipate", "believe", "predict", "potential" or "continue", or the negatives of these terms or variations of them or similar terminology, but the absence of these words does not mean that a statement is not forward-looking. Such forward-looking statements are subject to risks, uncertainties, and other factors which could cause actual results to differ materially from those expressed or implied by such forward-looking statements. These forward looking statements are provided as a general guide only and should not be relied upon as an indication or guarantee of future performance and may involve known and unknown risks, uncertainties and other factors, many of which are outside the control of Microba. You are cautioned not to place undue reliance on any forward looking statement. Forward looking statements in this Presentation are based on assumptions and contingencies which are subject to change without notice. Actual results, performance or achievements may vary materially from any forward looking statements and the assumptions on which statements are based. The forward looking statements in this Presentation are based on information available to Microba as at the date of this Presentation and nothing in this Presentation should be regarded as a representation by any person that the forward-looking statements set forth herein will be achieved or that any of the contemplated results of such forward-looking statements will be achieved. Except as required by law or regulation, Microba undertakes no obligation to provide any additional or updated information whether as a result of new information, future events or results or otherwise.

**Financial data** – All dollar values in Australian dollars (A\$ or \$) unless otherwise stated. Recipients should note that this Presentation contains historical and pro-forma financial information. Any financial information provided in this Presentation is for illustrative purposes only and is not represented as being indicative of Microba's views on its future financial condition and/or performance.

**Trademarks** – This Presentation may contain trademarks, trade names and copyrights of other companies, which are the property of their respective owners. Solely for convenience, some of the trademarks, trade names and copyrights referred to in this Presentation may be listed without the © or ® symbols, but Microba asserts, to the fullest extent under applicable law, the rights of the applicable owners, if any, to these trademarks, trade names and copyright.

**Disclaimer** - Except for any statutory liability which cannot be excluded, Microba, its related bodies corporate and their respective officers, employees and advisers expressly disclaim all liability (including negligence) for any direct or indirect loss or damage which may be suffered by any person in relation to, and take no responsibility for, any information in this Presentation or any error or omission therefrom, and make no representation or warranty, express or implied, as to the currency, accuracy, reliability or completeness of this Presentation.

# Unequivocal evidence demonstrates the **human gut microbiome acts systemically** and is a critical component of disease

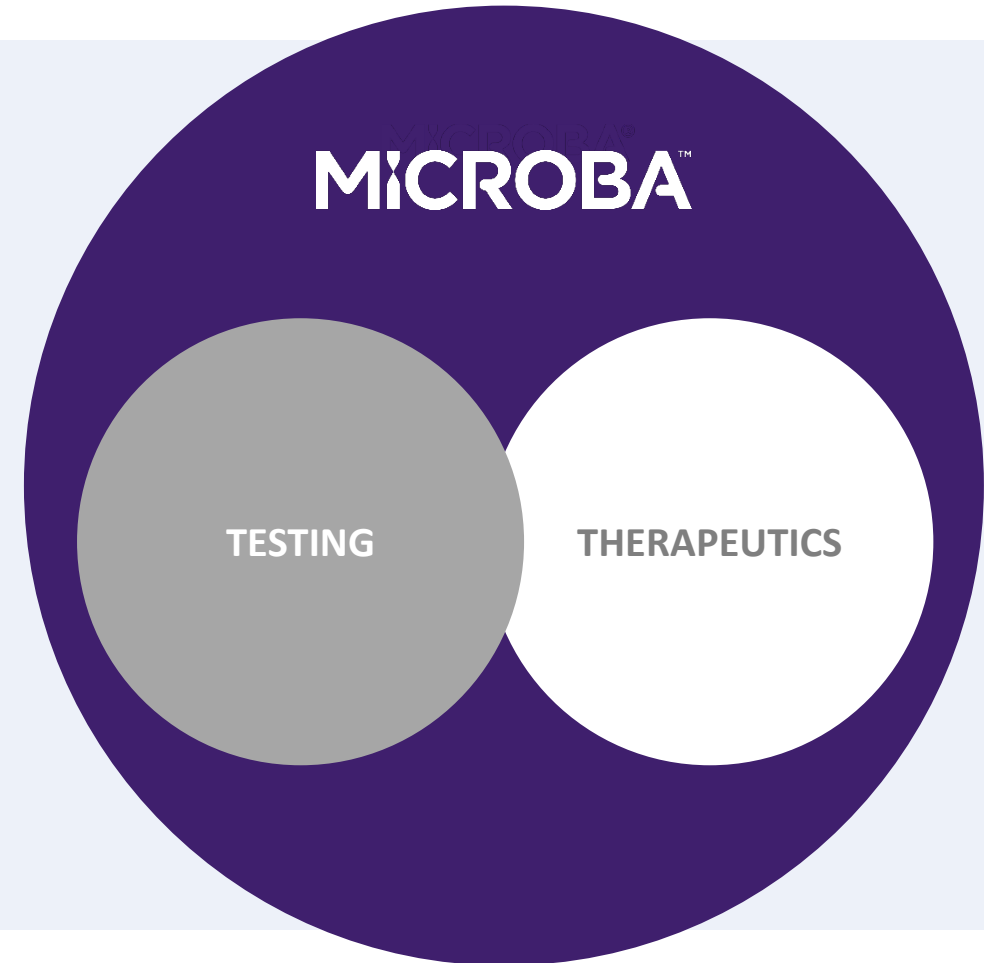


**>150**

Clinical studies demonstrating that **microbiome modulation can influence disease outcomes and symptoms\***

# Microba is a **medical diagnostic and clinical stage therapeutics company** unlocking the human microbiome

- Microba was founded in late 2017 on world-leading metagenomic microbiome analysis technology
- A clear vision for routine use of diagnostic metagenomic testing, and novel drugs developed using this technology
- Foundations and initial revenue built through non-diagnostic testing services with over 50,000 tests sold to date
- Microba's Testing business invested to develop 2 diagnostic testing products:
  - MetaXplore™** Gastrointestinal disorder test – Launched Feb 2023
  - MetaPanel™** Gastrointestinal pathogen test – Launched March 2024
- Microba's Therapeutics business invested in 3 programs:
  - 🦠 Inflammatory Bowel Disease – Phase I complete
  - 🦠 Immuno-Oncology – Preclinical lead candidate selection
  - 🦠 Autoimmune Disease – Discovery



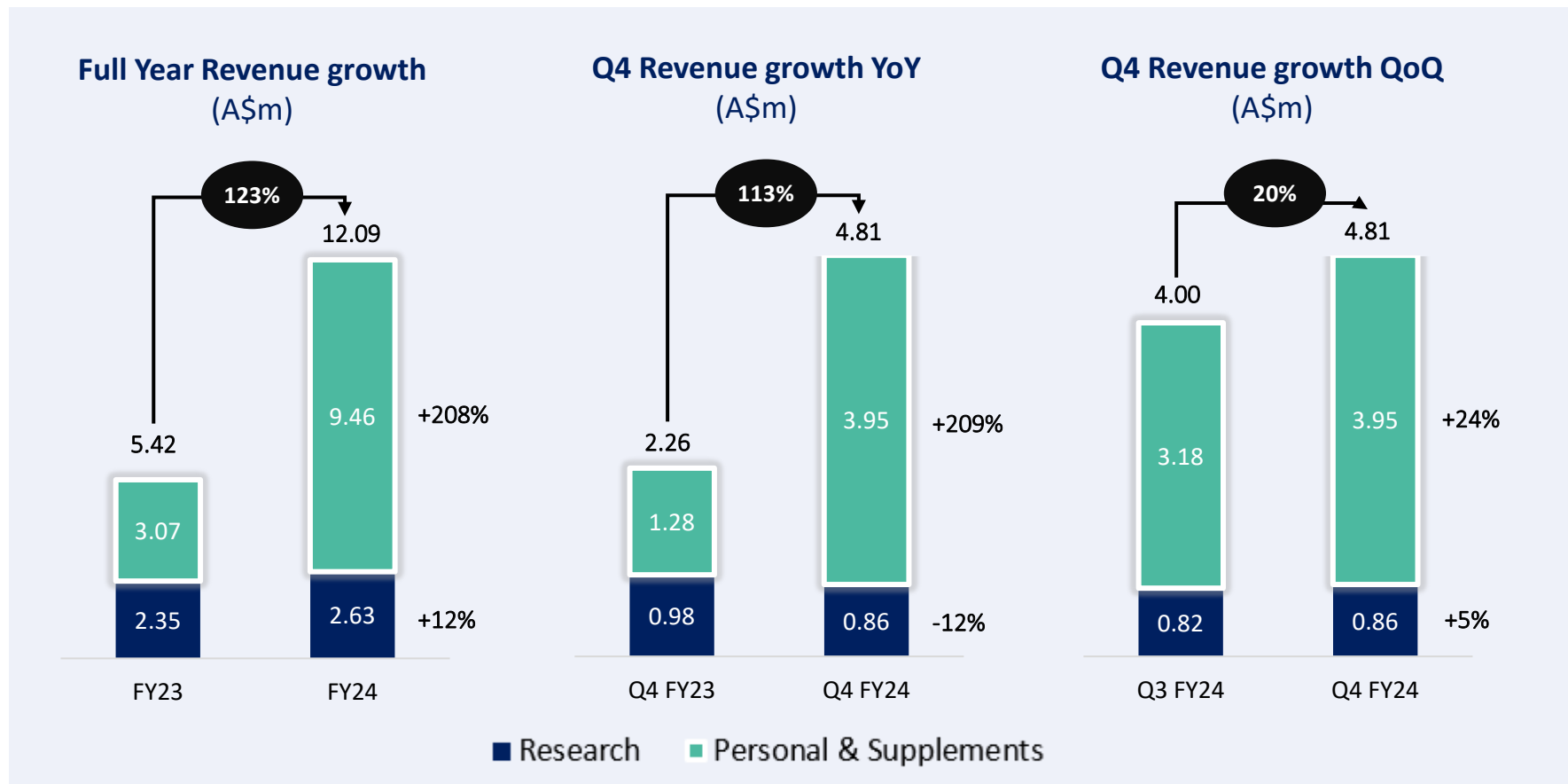
# Q4 Results

## Financial Highlights

# Q4 Financial Highlights

Record Sales and Revenue Growth in Australia, First Full Half of Revenue from Invivo Clinical in the United Kingdom

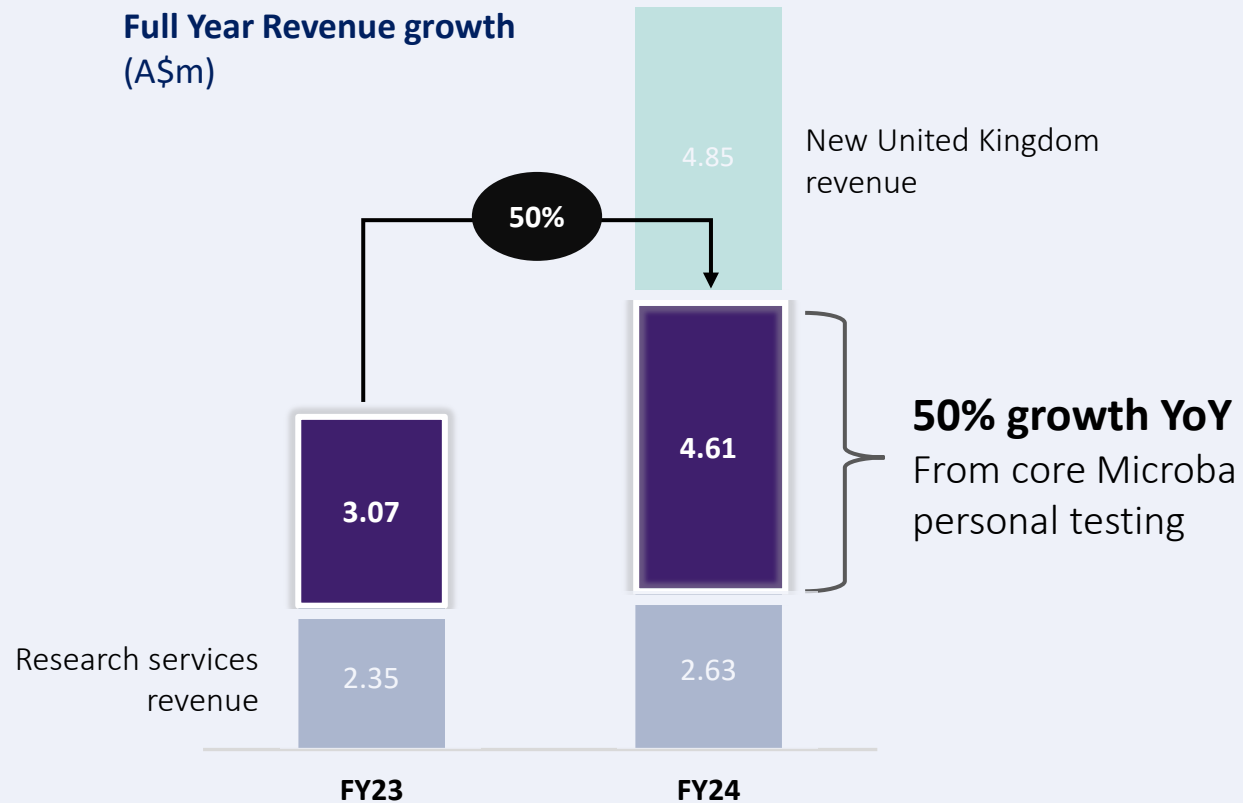
**\$12.09m full year revenue, up 123% YoY | \$4.81m Q4 revenue, up 113% YoY**



- \$4.81m in Q4 FY24 unaudited revenue, up 20.2% QoQ and 113% YoY.
- \$3.95m in Q4 Personal Testing & Supplements revenue, up 24.0% QoQ and 208.8% YoY.
- \$4.66m in Q4 FY24 cash receipts, up 15.7% QoQ and up 275.4% YoY.
- \$12.44m Full Year cash receipts, up 148.1% YoY.
- \$12.09m in Full Year unaudited revenue, up 123.1% YoY.

# Q4 Financial Highlights

Strong growth in Microba's core personal testing revenue



**\$4.61m in revenue from core Microba personal testing, up 50% YoY**

- Accelerating growth of core personal testing sales and revenue in Australia following launch of diagnostic testing products, MetaXplore and MetaPanel
- Strong growth in clinician adoption visible through retained customers, repeat test referrals and new ordering clinicians



# Q4 Results

## Business Highlights

# Recent Milestones & Highlights

## TESTING

- 1) Record growth for Gastrointestinal Disorder Test, MetaXplore, in Australia.**
  - 1,835 tests sold during Q4 FY24, up 71% QoQ.
  - 414 ordering clinicians in Q4, up 41% from 293 in Q3 FY24.
- 2) Invivo Clinical achieved \$2.21m in sales for Q4 FY24.**
  - \$2.21m in sales for Q4 FY24, and \$4.45m in sales for H2 FY24.
  - 1,934 tests and 31,833 supplements sold during Q4 FY24, consistent QoQ
  - 826 ordering clinicians in Q4
- 3) MetaPanel sales building across major states through the Sonic Healthcare (ASX: SHL) network.**
  - Active KOL engagement
  - Evidence generation activities and utility publications in process.

## THERAPEUTICS

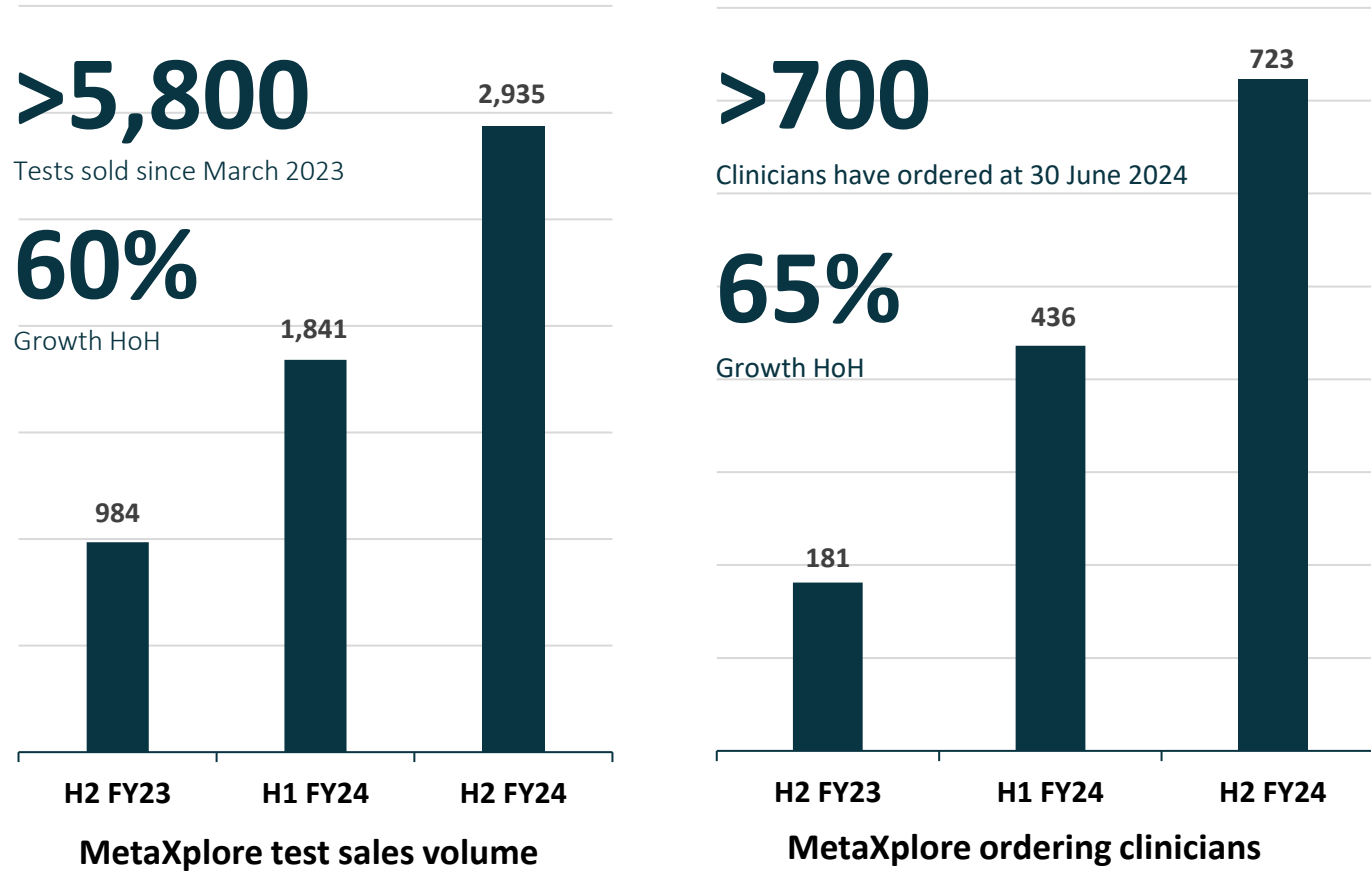
- 1) Autoimmune Program**

Successful completion of world-first Autoimmune therapeutic discovery program with Ginkgo Bioworks
- 2) Inflammatory Bowel Disease Program**

Preparing MAP 315 for Phase 2.
- 3) Immuno-Oncology Program**

Clinical data and sample set grown to >3,500 patients supporting this program.

# Growing MetaXplore sales and clinical adoption in Australia

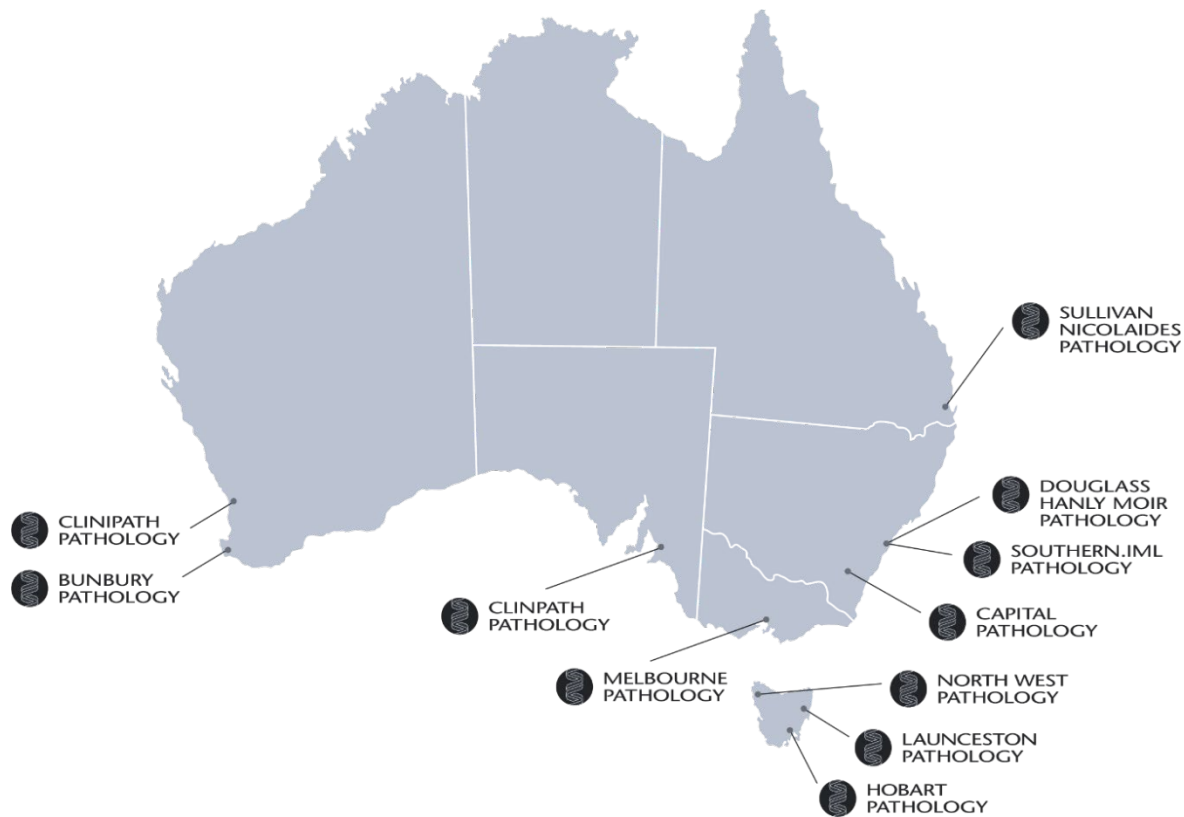


- 1,835 tests sold during Q4 FY24, up 71% QoQ.
- >300 new clinician accounts registered to access in Q3, now totals >1,700 registered
- 414 ordering clinicians in Q4, up 41% QoQ.
- **Growth activities:**
  - Targeted sales and marketing activities focused on high prescribing potential clinicians
  - Clinician education
  - KOL engagement
  - Utility studies and publications

## Australia

## MetaXplore™

# Growing MetaPanel sales, advancing GI pathogen diagnosis in Australia



- Doctor referrals and sales continue to grow monthly across the country, focused around the major east coast states New South Wales, Victoria and Queensland.
- 7 clinician launch events held spanning all major states and territories
- Growth activities:
  - Targeted sales and marketing activities focused on gastroenterology specialists and general practice
  - Clinician education
  - KOL engagement
  - Utility studies and publications

# Preparing for growth in the United Kingdom

**1,934**

Q4 Tests Sold

**6,615**

Tests Sold FY24

**31,833**

Q4 Supplements Units

**125,767**

Supplements Units Sold FY24

**826**

Q4 ordering clinicians

**6,958**

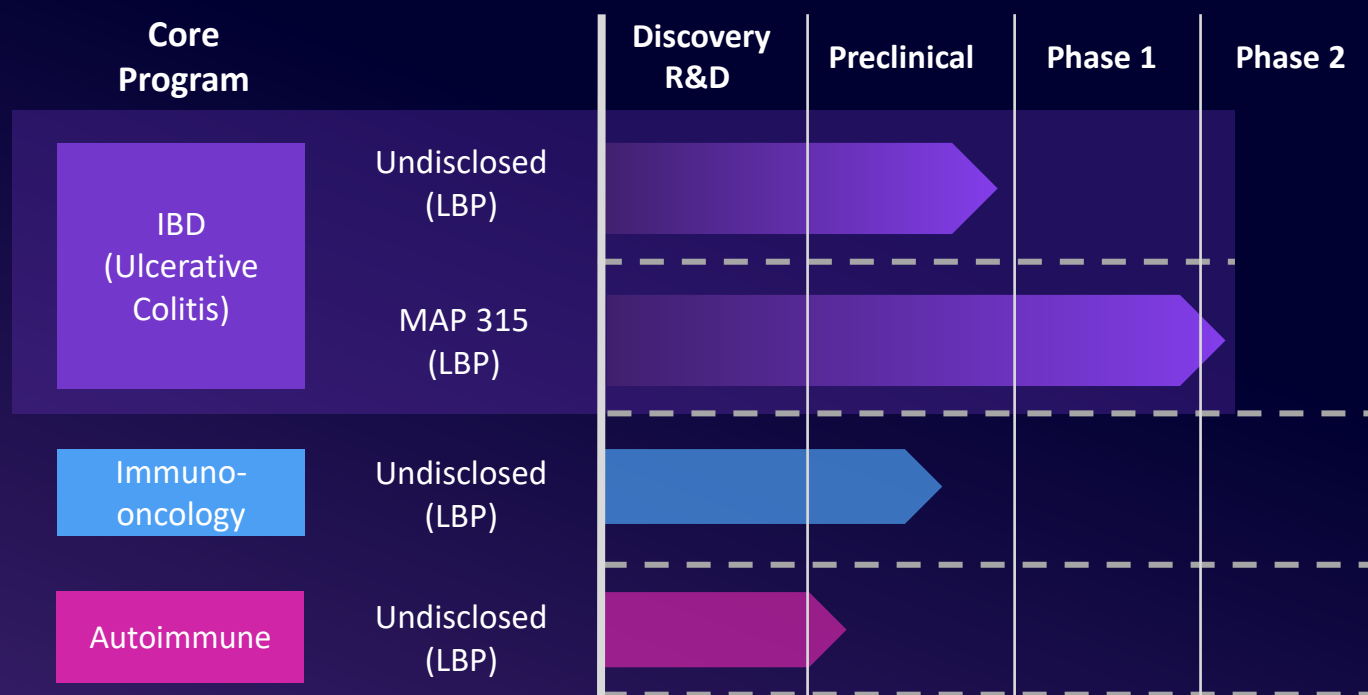
Clinicians registered all time

- **\$4.45m in sales generated in H2 FY24.** The first full half of Invivo sales and revenue as part of the Microba group.
- **Growth strategy:**
  - Stage 0**
    - Bolster sales and marketing resourcing for the UK team with recruitment of new talent to unlock latent growth potential
    - Recruitment well advanced with great candidate pool
  - Stage 1**
    - Launch Microba's MetaXplore™ product into the UK to drive testing growth
    - Planning is well advanced
    - Scheduled to occur in FY25.

**United Kingdom**

**invivo®**

# Therapeutic Development Programs continue to make significant advancements



- **Autoimmune Program**
  - Successful completion of world-first Autoimmune therapeutic discovery program with Ginkgo Bioworks
- **Inflammatory Bowel Disease Program**
  - Preparing MAP 315 for Phase 2
  - Bolstering CMC package and regulatory documentation for IND
- **Immuno-Oncology Program**
  - Clinical data and sample set grown to >3,500 patients supporting this program.

# Microba Diagnostics

# Our Diagnostics Vision

To combat disease through microbiome health

Since 2023, Microba has executed the next step of its journey into a medical diagnostic company at the forefront of the medical application of microbiome testing.



# Our Diagnostics Focus

Patients suffering from Gastrointestinal Disease



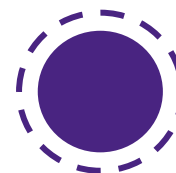
Oncology



Neuro



Cardiovascular



**Gastrointestinal**



Longevity



Fertility

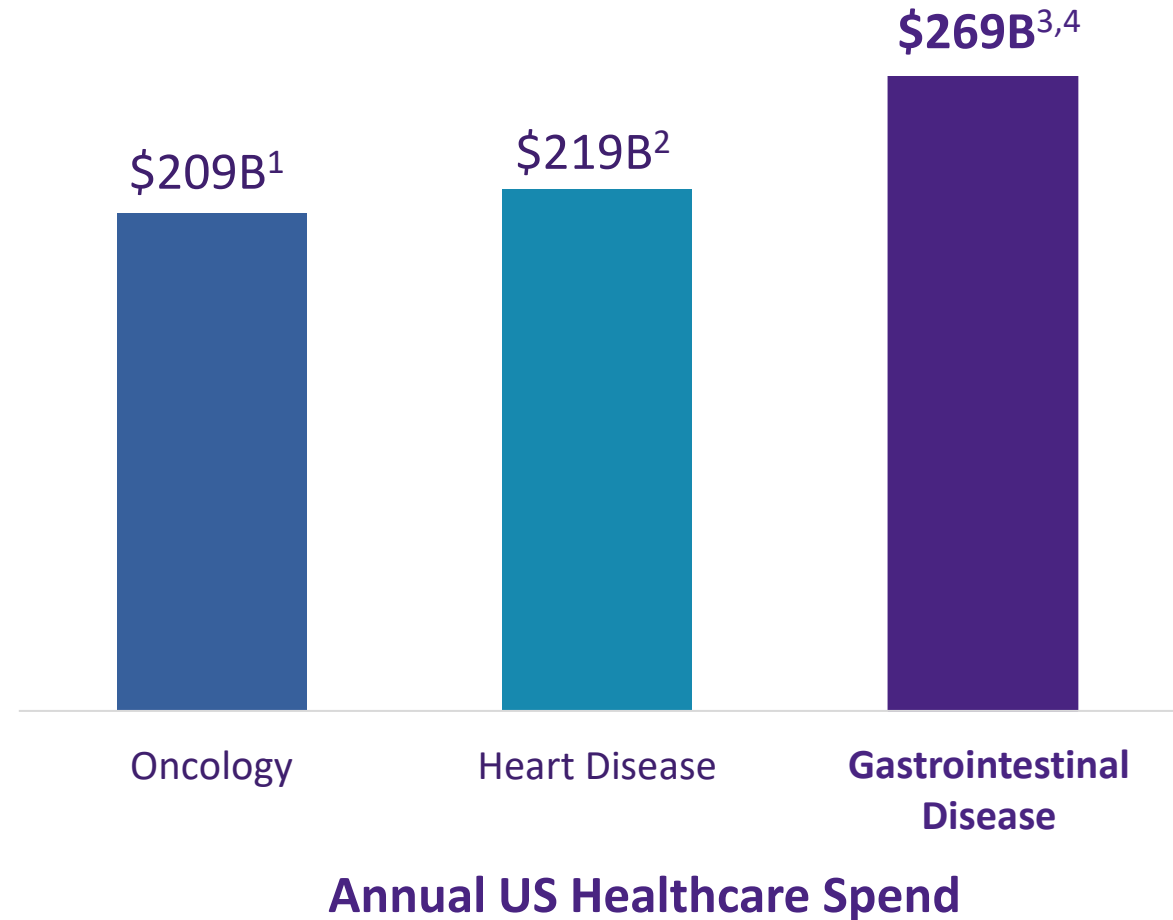
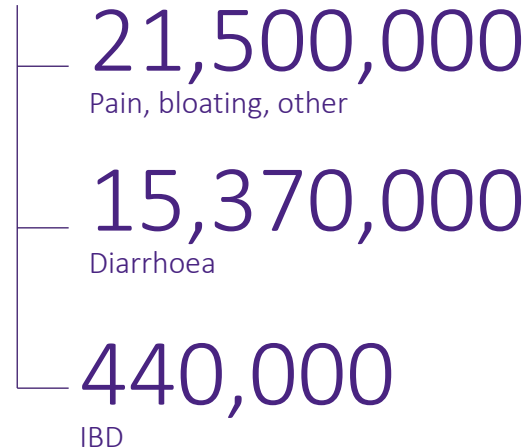


# Lower Gastrointestinal Disease

a leading cause of healthcare spend

# 37,310,000

**Patients** presenting annually in the US  
with lower GI abdominal symptoms\*



<sup>1</sup>National Cancer Institute website: [https://progressreport.cancer.gov/after/economic\\_burden](https://progressreport.cancer.gov/after/economic_burden); <sup>2</sup>CDC website: <https://www.cdc.gov/policy/polaris/healthtopics/heartdisease/index.html>

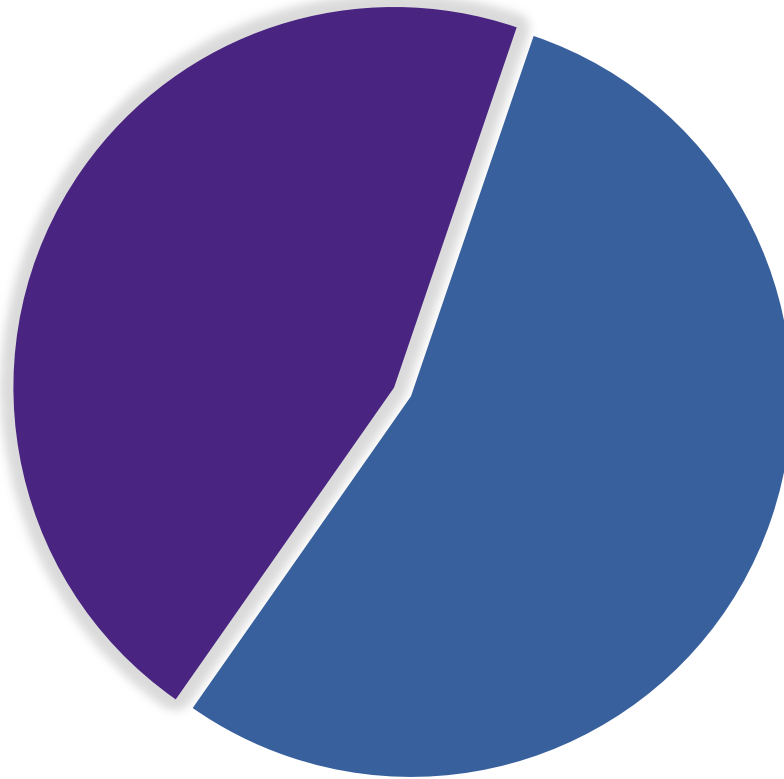
<sup>3</sup>Nyrop et al. 2007. *Alimentary Pharmacology & Therapeutics*. DOI: 10.1111/j.1365-2036.2007.03370.x. <sup>4</sup>Park et al 2019. *Inflammatory Bowel Diseases*. DOI:10.1093/ibd/izz104.

\*Assessment of Medicare claims analysis by Veranex including estimated Private and Medicaid numbers extrapolated from the Medicare claims analysis. Combined with IBS diagnosed individual data from Almaro et al 2023. *Gastroenterology*. DOI:10.1053/j.gastro.2023.08.010 and IBD individual data from Lewis et al 2023. *Gastroenterology*. DOI:10.1053/j.gastro.2023.07.003 and Weisman et al 2023. *Prev. Med. Rep.* DOI: 10.1016/j.pmedr.2023.102173.

# Half of patients are not getting a resolution from current standard of care

**47%**

→ Unresolved



**53%** Resolved

# Addressing the GI symptom challenge

## Microba's comprehensive diagnostic products

### First line

For the detection  
of pathogens causing  
GI symptoms

### MetaPanel™



### Gastrointestinal pathogen test

**Launched March 2024**

- ✓ Stool DNA test.
- ✓ 175 targets.
- ✓ Expertly curated clinical recommendations for targeted treatment.

Developed with  
 SONIC  
HEALTHCARE

---

### Second line

For identifying  
functional causes  
for non-pathogenic  
GI symptoms

### MetaXplore™



### Gastrointestinal disorder test

**Launched February 2023**

- ✓ Stool DNA + targeted biomarker test.
- ✓ 7 functional GI markers. >28k microbiome markers.
- ✓ Expertly curated clinical recommendations for personalised treatment.

# Getting answers for patients in need

## Closing the gap on GI symptom diagnosis and treatment

Out of 100 patients presenting with lower GI symptoms



**MetaXplore™**

**24%<sup>\*\*</sup>** more diagnoses with  
**MetaPanel™**

**19%<sup>\*</sup>** diagnosed with  
Standard of Care (PCR +MCS+OCP)

\* Large pathology company data from 70,000 tests with 19% positive pathogen detection rate

\*\* Study of first 4 months of MetaPanel test results in clinical practice in Australia

# Transforming standard of care

## A paradigm shift

*“After the first 4 months using the MetaPanel test, **24% of patients have been diagnosed** with a pathogen that would have been undiagnosed or experienced delayed time to diagnosis and resolution.*

*This is a breakthrough in infectious disease management”*

**MetaPanel™**



**Dr Michael Wehrhahn**

BSc (Med) MBBS (Hons) MPH (Hons) FRACP FRCPA  
Clinical Microbiologist,  
Infectious Disease Physician & Director  
of Molecular Biology



DOUGLASS  
HANLY MOIR  
PATHOLOGY



SONIC  
HEALTHCARE

# Changing lives every day

*“Before completing the MetaXplore test with my practitioner, my health was in constant distress. I looked and felt bloated all the time, to the point of appearing six months pregnant. My severe constipation led to bowel movements only every 5-6 days with trapped gas causing extreme pain. After completing the MetaXplore test and implementing my treatment plan, I have experienced remarkable improvements. My bowel movements are now regular, averaging every 2-3 days. **The trapped gas and extreme pain are gone, significantly improving my daily life. With adherence to the treatment plan, I no longer suffer from bloating, pain, reflux, or indigestion**”*

**MetaXplore  
patient**

**MetaXplore™**

# Changing lives every day

*“I have struggled with gastrointestinal symptoms for over half my life. I have tried resolving with many specialists, restrictive eating plans and natural therapies. My MetaXplore test this year identified clear problems and a personalised treatment plan. I am grateful that through following the treatment plan **I have achieved complete resolution to my symptoms and can enjoy eating unrestricted for the first time in 35 years.**”*

**MetaXplore  
patient**

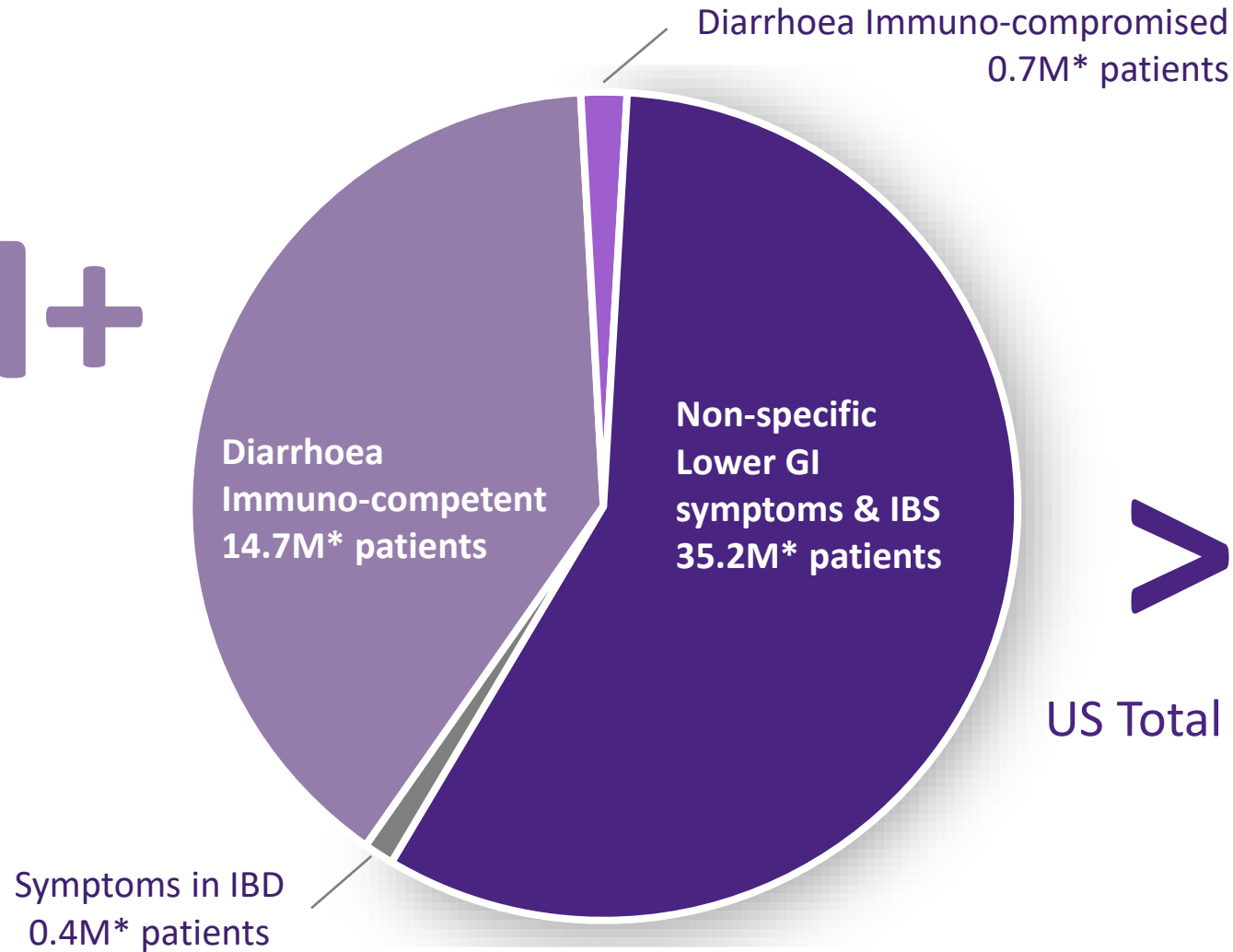
**MetaXplore™**



# A multi-billion dollar market opportunity

35M+

US patients\*



>\$15B

US Total Addressable Market\*\*

Ongoing market analysis with  Veranex

\*\*\*

\* Assessment of Medicare claims analysis. Estimated Private and Medicaid numbers extrapolated from Medicare claims analysis.

\*\* Assumes minimum revenue per test of US \$416.78 aligned to CPT code 57507. This is viewed to be the minimum with the top pricing predicate at US \$2126.20

# Serving patients today and driving to establish a new reimbursed standard of care

## Out of pocket pay access

Driving access today where standard of care has failed.

Full out of pocket pay.

## Regulatory



## Evidence

Clinical performance validation.

Case studies.

Registry driving RWE.

RCTs vs standard of care demonstrating clinical utility.

## Reimbursement & coverage



UNITEDHEALTH GROUP®



## Guidelines



# Microba's Therapeutics

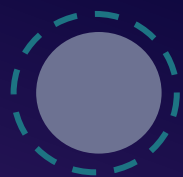
# Our Therapeutics Vision

To combat disease through microbiome health

Since 2020, following the establishment of the richest Microbiome data resource in the world, Microba has advanced the discovery and development of novel microbiome therapeutics at the forefront of microbiome drug development.

# Our primary Therapeutic Focus

Clinical: Patients suffering from Inflammatory Bowel Disease



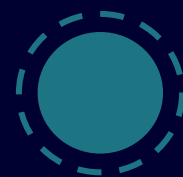
Oncology



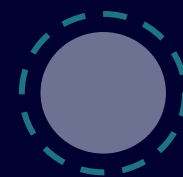
Neuro



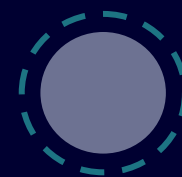
Cardiovascular



Gastrointestinal



Allergy



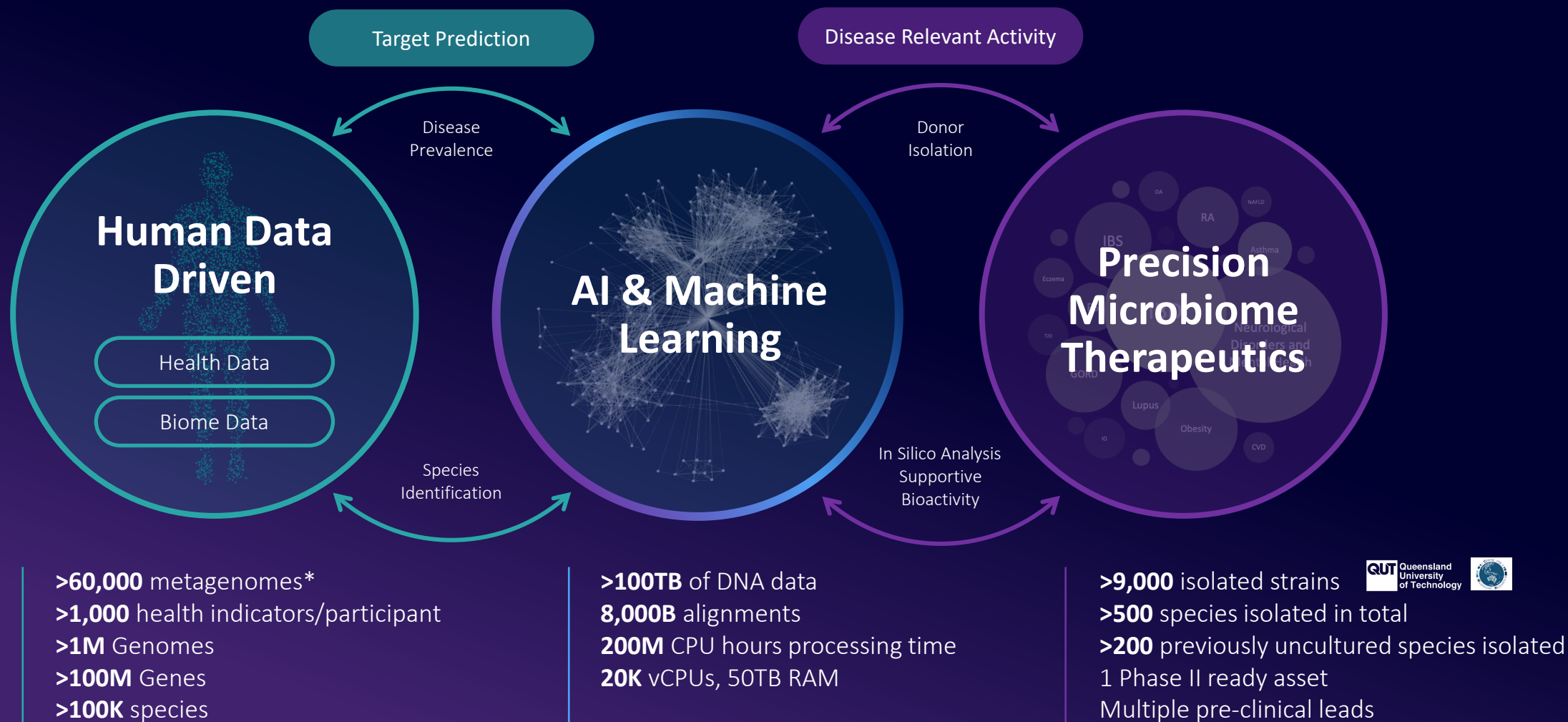
Autoimmune



Preclinical: Patients suffering from autoimmune disease, allergy or undergoing cancer immunotherapy

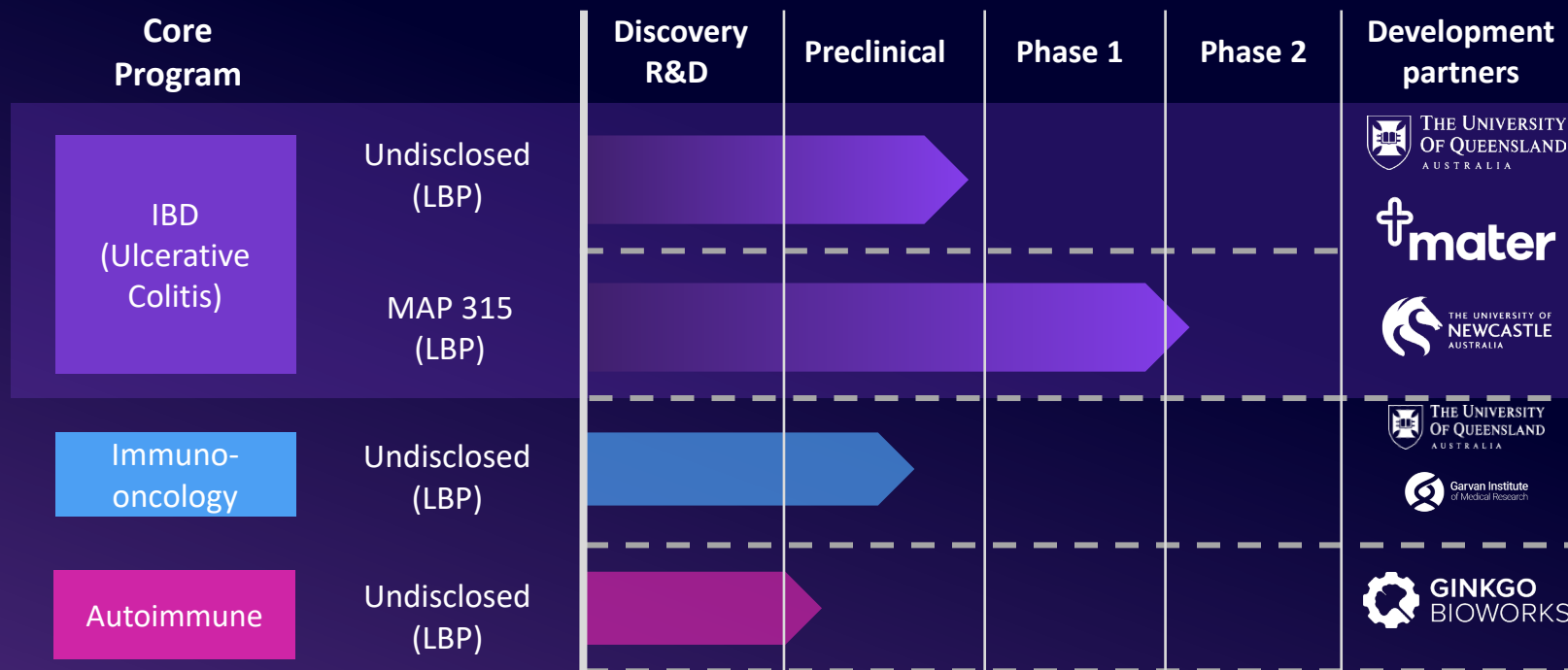
# Microba is Pioneering an Advanced AI/ML Approach

For the Development of Next Generation Precision Live Biotherapeutics



\*Derived from both internal and external data

# Microba is a leader in Precision Microbiome Therapeutics



- Precision microbiome analysis platform delivering unparalleled accuracy, coverage & depth.
- Data driven discovery platform utilising one of the world's most advanced & highly curated microbiome datasets.
- Potent and novel biology mediated by Live Biotherapeutic strategy
- Demonstrated scalable GMP manufacturing process
- Oral delivery and Excellent safety profile

Leadership experience



Massachusetts  
Institute of  
Technology

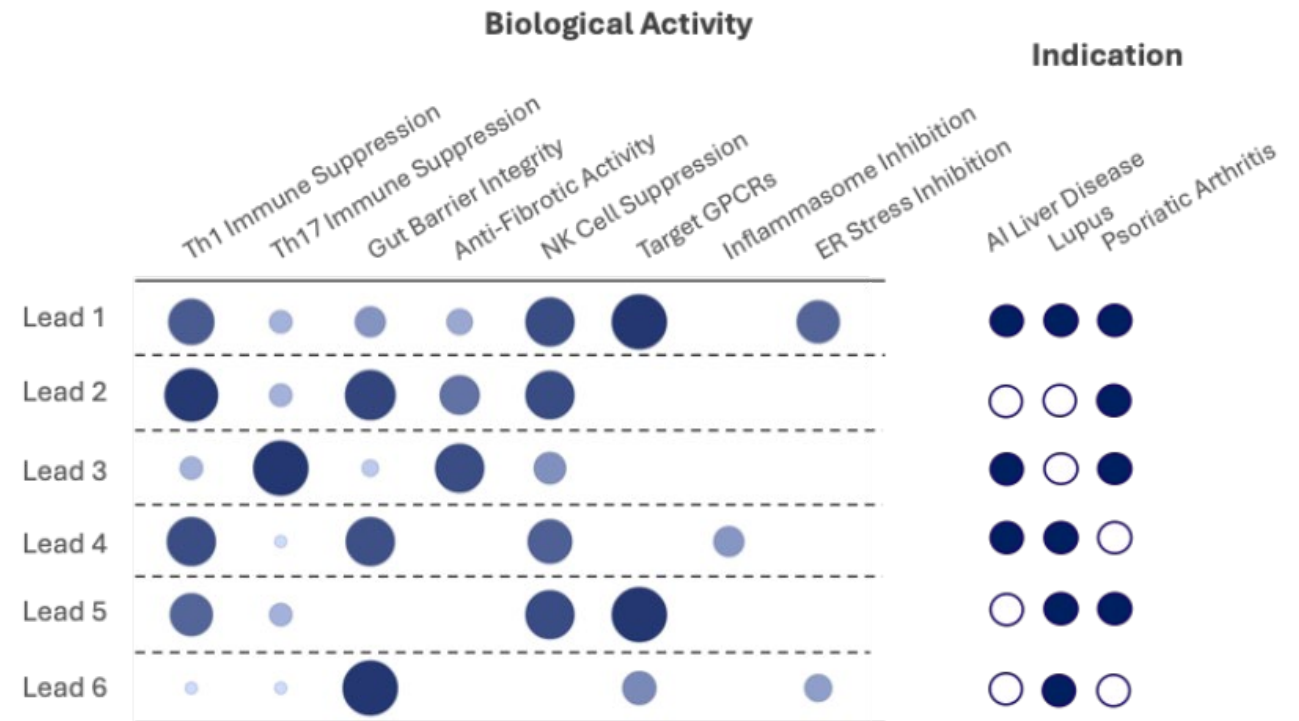




## Stage 2 Screening – Complete June 2024

- ✓ Delivered compelling biological activity enabling selection of 6 lead strains, generating new therapeutic intellectual property assets for the Company
- ✓ Data generated showing impact on fibrosis, gut barrier integrity, nuclear receptor biology, GPCRs and ER stress
- ✓ Generated more than 3 million data points in world-first microbiome therapeutic discovery effort

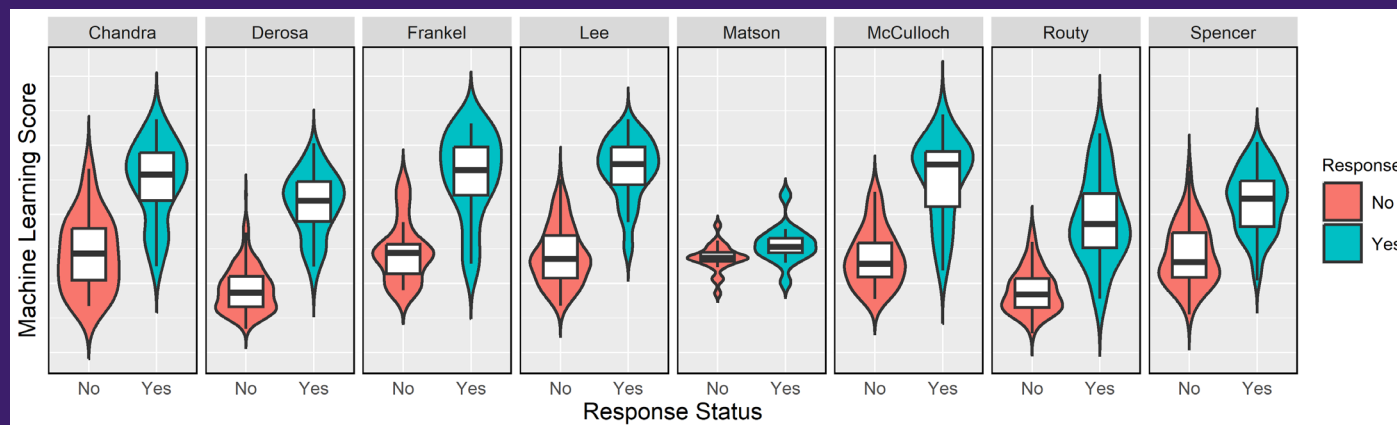
## Observed broad and potent immunomodulatory activity which is disease relevant





## Microba's clinical data and sample set has now grown to over 3,500 patients.

- >2,500 patient samples collected from the national PrOSPeCT study which is expected to be one of the largest clinical specimen resources with respect to the microbiome and cancer treatment expected to support the lead candidate selection decision processes and the pre-clinical package.
- >1,000 metagenomics samples already analysed from 8 internally recruited and published studies across multiple cancer types have been compiled to discover gut microbiome signatures associated with patient response to checkpoint inhibitor immunotherapy
- Robust signals have been discovered spanning geography, clinical indication, and checkpoint inhibitor regimens, enabling high-throughput *in vitro* screening of potential lead species for disease-relevant activities in human immunological models



Results of integrated machine learning analysis of clinical datasets, demonstrating a consistent metagenomic signature of patient response to ICI. Models were trained on species abundances using ten-fold cross validation. Final models predict response with an accuracy of 87%.

## OMICO & PrOSPeCT study

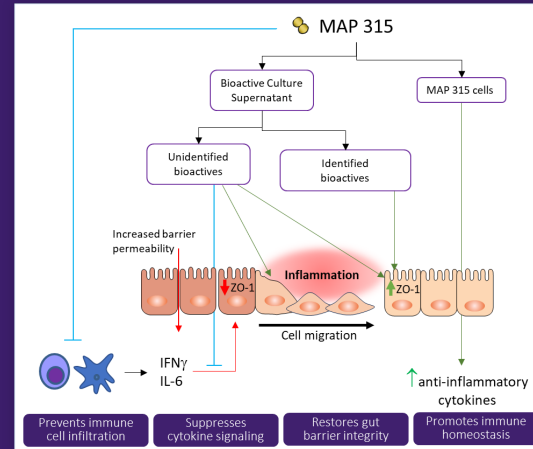
- Microba is a collaborating partner in the landmark \$185M program, which is the largest precision oncology and cancer genomics initiative in Australia
- Microba has joined companies which as Bayer, Illumina and Sonic Healthcare to advance precision oncology



# Inflammatory Bowel Disease Program: MAP 315

## Data supporting MOA

Pre-clinical data supports that MAP 315 stimulates mucosal healing (modulation of WNT signaling, restoration of gut barrier integrity) and immune homeostasis (induction of regulatory T cells). Both critical to the etiology and pathophysiology of Ulcerative Colitis

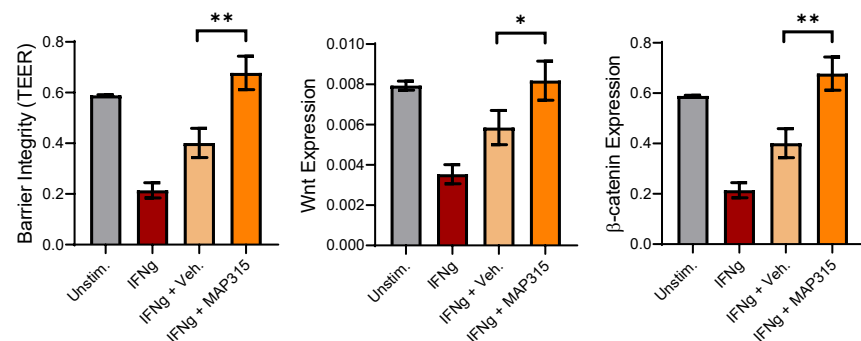


## Phase II trial readiness

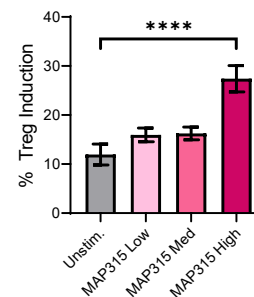
Study start timing actively being defined - Adaptive Patient Study, N = 140 to 200 examining induction of remission

- Phase 1 data package = complete
- Protocol development = complete
- Final CMC pack = in process
- IND filing = drafting

MAP 315 ameliorates IFN $\gamma$  induced loss of gut barrier integrity and restores WNT pathway signaling



MAP 315 induces regulatory T cells

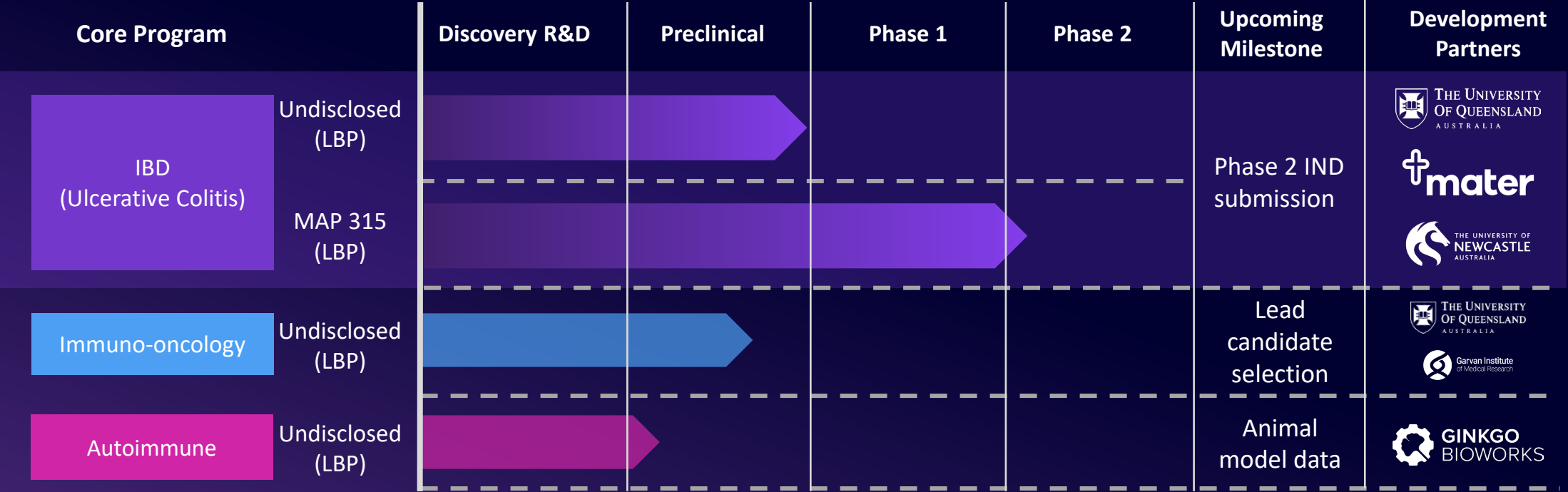


## Phase I trial summary – Concluded Dec 2023

- ✓ Safe and well tolerated at both low and high doses
- ✓ No clinically significant safety signals from assessments.
- ✓ Faecal kinetics assessed by metagenomic analysis indicated ability to successfully deliver live MAP 315 into the gastrointestinal tract

# Therapeutic pipeline & catalysts

# Therapeutic pipeline & catalysts





**Dr Luke Reid**

Chief Executive Officer  
luke.reid@microba.com



**Pasquale Rombola**

Chairman  
pasquale.rombola@microba.com

**CONTACT**

**Head Office**

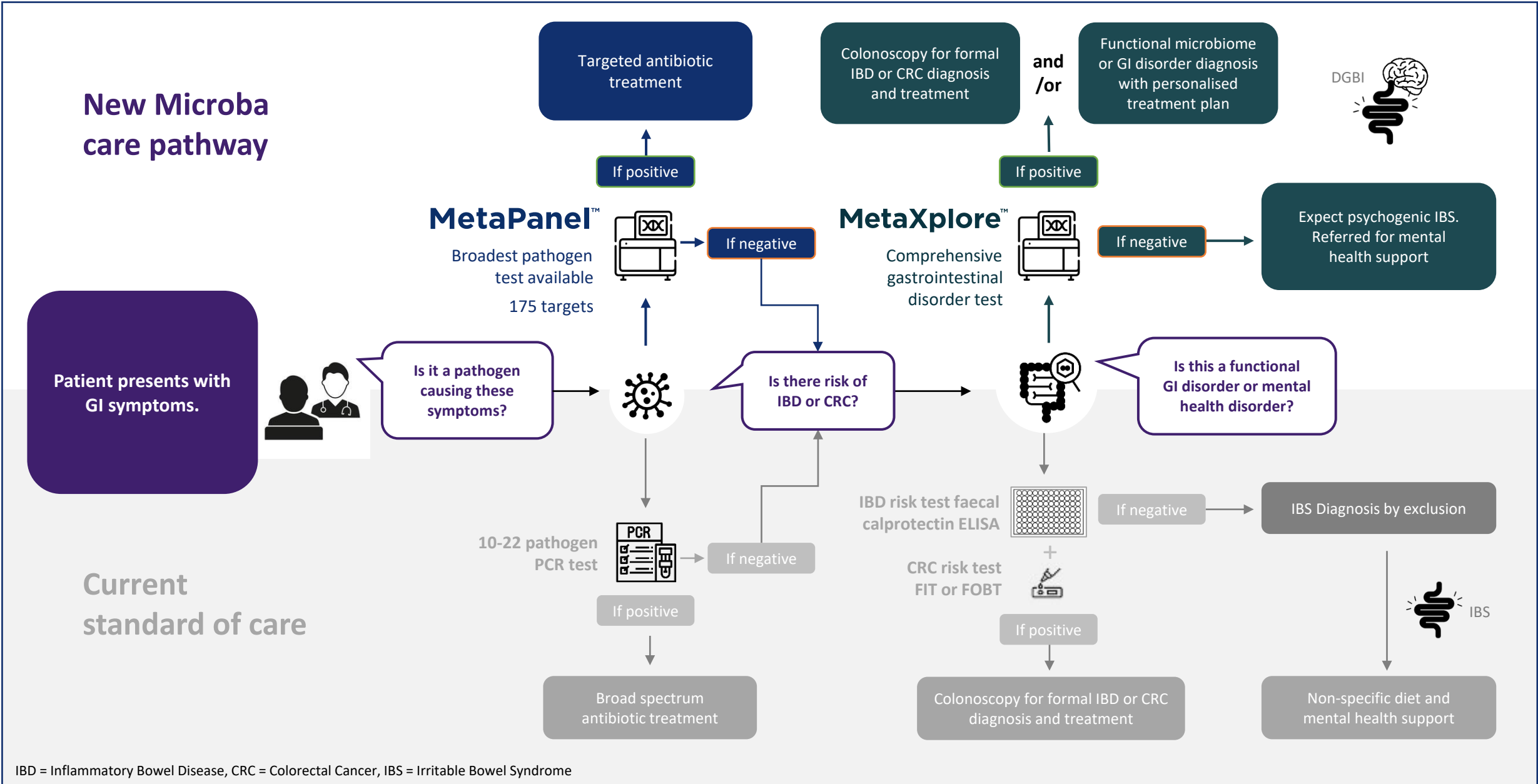
Level 10, 324 Queen Street  
Brisbane QLD Australia

**Laboratory**

Princess Alexandra Hospital  
Woolloongabba QLD Australia

# Appendix

# Patient pathway — Advancing the standard of care for GI symptoms



# Two core business segments driven by a world leading technology

## Testing Business

Next generation gastrointestinal diagnostics

2 clinical tests.

GASTROINTESTINAL PATHOGEN TEST

**MetaPanel™**

GASTROINTESTINAL DISORDERS TEST

**MetaXplore™**

2 channels to market.

PATHOLOGY PARTNER CHANNEL



**PRIMARY TARGET CLINICIANS**  
Gastroenterologists  
General Practitioners  
Other Specialists

DIRECT TO PRACTITIONER CHANNEL



**PRIMARY TARGET CLINICIANS**  
Integrative General Practitioners  
Integrative Specialists  
Dieticians  
Nutritionists  
Naturopathic practitioners

**MiCROBA®**

World leading microbiome analysis technology

Proprietary databank

Advanced AI and biostatistics powering a diagnostics and therapeutics platform

## Therapeutics Business

Precision microbiome therapeutics

Data driven therapeutic development platform.

ADVANCED AI/ML APPROACH UNDERPINNED BY WORLD LEADING TECHNOLOGY

NOVEL PIPELINE OF MICROBIOME THERAPIES – POTENT, ORAL DELIVERY, SAFE & MANUFACTURABLE

3 therapeutic programs.

**INFLAMMATORY BOWEL DISEASE PROGRAM**

**CLINICAL INDICATION**  
Mild-moderate Ulcerative Colitis

**DEVELOPMENT STAGE**  
Phase 1 Complete  
Phase 2 Readiness



**IMMUNO-ONCOLOGY PROGRAM**

**CLINICAL INDICATION**  
Multiple cancers to enhance check-point inhibitor treatment response

**DEVELOPMENT STAGE**  
Pre-clinical. Lead candidate selection



**AUTOIMMUNE DISEASE PROGRAM**

**CLINICAL INDICATION**  
Lupus, psoriatic arthritis & autoimmune liver disease

**DEVELOPMENT STAGE**  
Discovery





# Microba is developing the 3<sup>rd</sup> Generation of Microbiome Therapeutics using a human data driven approach

