



**CORPORATE  
PRESENTATION  
TRIBECA FUTURE  
FACING  
COMMODITIES  
CONFERENCE**

**APRIL 2025**



# CORPORATE OVERVIEW

## CAPITAL STRUCTURE

SHARES ON ISSUE	716.5M
PERFORMANCE RIGHTS	14.8M
OPTIONS	12.0M
MARKET CAP	A\$125.4M <sup>1</sup>
CASH	A\$70.7M <sup>2</sup>
ENTERPRISE VALUE	A\$54.7M

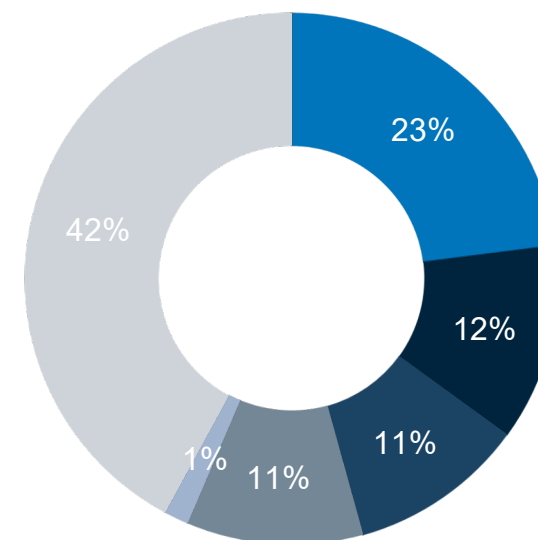
## RESEARCH COVERAGE PROVIDED BY:



1. Closing Price A\$0.175 cps 28 March 2025

2. Cash Balance as at 31 December 2024




## MAJOR SHAREHOLDERS



Mineral Resources	22.9%
Idemitsu	12.0%
Hancock Prospecting	10.7%
Waratah	10.7%
Board and Management	1.5%
Other	42.2%

# REVIEW OF OPERATIONS

## Key

-  Lithium **Operating Mine**
-  Lithium **Resources**
-  Lithium **Resources Estimates (<5Mt)**
-  **Ports**

## Total Lithium/Tantalum Resources

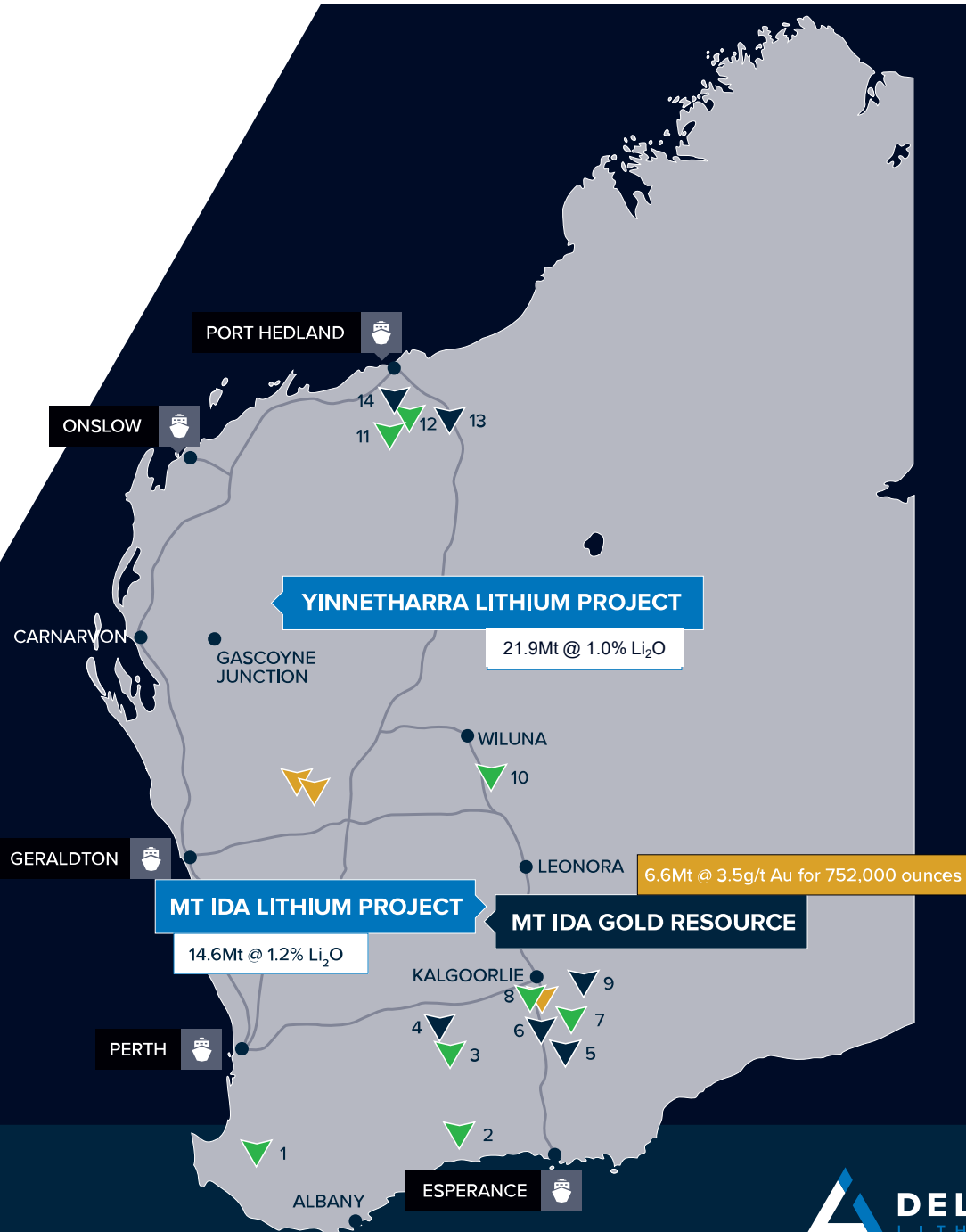
36.5Mt @ 1.1% Li<sub>2</sub>O and  
54Mt @ 126ppm Ta<sub>2</sub>O<sub>5</sub>

## Mt Ida Gold Resource

6.6Mt @ 3.5g/t Au  
for 752,000 ounces

## Projects

1. Greenbushes
2. Mt Cattlin
3. Mt Holland
4. Split Rocks
5. Buldania
6. Dome North
7. Bald Hill
8. Mt Marion
9. Manna Lithium
10. Kathleen Valley
11. Wodgina
12. Pilgangoora
13. Marble Bar
14. Tappa Tappa





# OUR BOARD

## PROVEN EXPERIENCE IN PROJECT DELIVERY



**Nader El Sayed**  
Non-Executive Chairman

- ▶ Current Managing Director of Multiplant Holdings – a mining and civil services provider
- ▶ Background in risk management, corporate governance, strategy and finance



**James Croser**  
Managing Director

- ▶ 25+ years operational, technical and management experience in the Australian mining sector
- ▶ Mining Engineering background
- ▶ Founding Director of Delta Lithium



**Joshua Thurlow**  
Non-Executive Director

- ▶ 20+ years experience in mining and resources across Asia Pacific, Africa & North America
- ▶ Background in corporate strategy, social responsibility, business development and growth and operations leadership



**Tim Manners**  
Non-Executive Director

- ▶ 25+ years experience in corporate finance, accounting and business development functions in the resources sector
- ▶ Held senior financial positions in various sectors including precious and base metals, industrial minerals and bulk commodities



**Steve Kovac**  
Non-Executive Director

- ▶ Current CEO of Idemitsu Australia
- ▶ 23+ years experience in the mining sector
- ▶ Held Senior Management and Executive level roles for the past 14 years



# RAPID DEVELOPMENT OF WESTERN AUSTRALIAN ASSETS

## Our Team

- ▶ Experienced resource professionals with Life of Mine vision
- ▶ Seasoned Lithium and Gold explorers

## Major Shareholders

- ▶ Substantial investments by proven lithium miners, multinationals and investors

## Location

- ▶ Two JORC Lithium Resources
- ▶ Global MRE **36.5Mt @ 1.1% Li<sub>2</sub>O**
- ▶ WA the Hard-rock Lithium Capital of the World

## Mt Ida

- ▶ All Mining Approvals in place
- ▶ Lithium/Tantalum MRE **14.6Mt @ 1.2% Li<sub>2</sub>O and 191ppm Ta<sub>2</sub>O<sub>5</sub>**
- ▶ Gold MRE **6.6Mt @ 3.5g/t Au for 752koz**

## Yinnetharra

- ▶ Lithium/Tantalum MRE **21.9Mt @ 1.0% Li<sub>2</sub>O and 39.4Mt @ 102ppm Ta<sub>2</sub>O<sub>5</sub>**
- ▶ Exploration and development programs
- ▶ Dominant landholding

## Upcoming Catalysts

- ▶ Exploration results incoming
- ▶ Mining and Metallurgy Studies Progressing
- ▶ Mt Ida Gold value-add





# MT IDA LITHIUM & GOLD PROJECT

## VALUE CREATION IN THE GOLDFIELDS



# MT IDA PROJECT OVERVIEW

## Unique Deposit Geology – Lithium & Gold adjacent

High-grade LCT pegmatites at Sister Sam, Timoni & Sparrow

**14.6Mt @ 1.2% Li<sub>2</sub>O for 433kt LCE**  
includes Indicated Resources of  
7.8Mt @ 1.3% Li<sub>2</sub>O & 224ppm Ta<sub>2</sub>O<sub>5</sub>

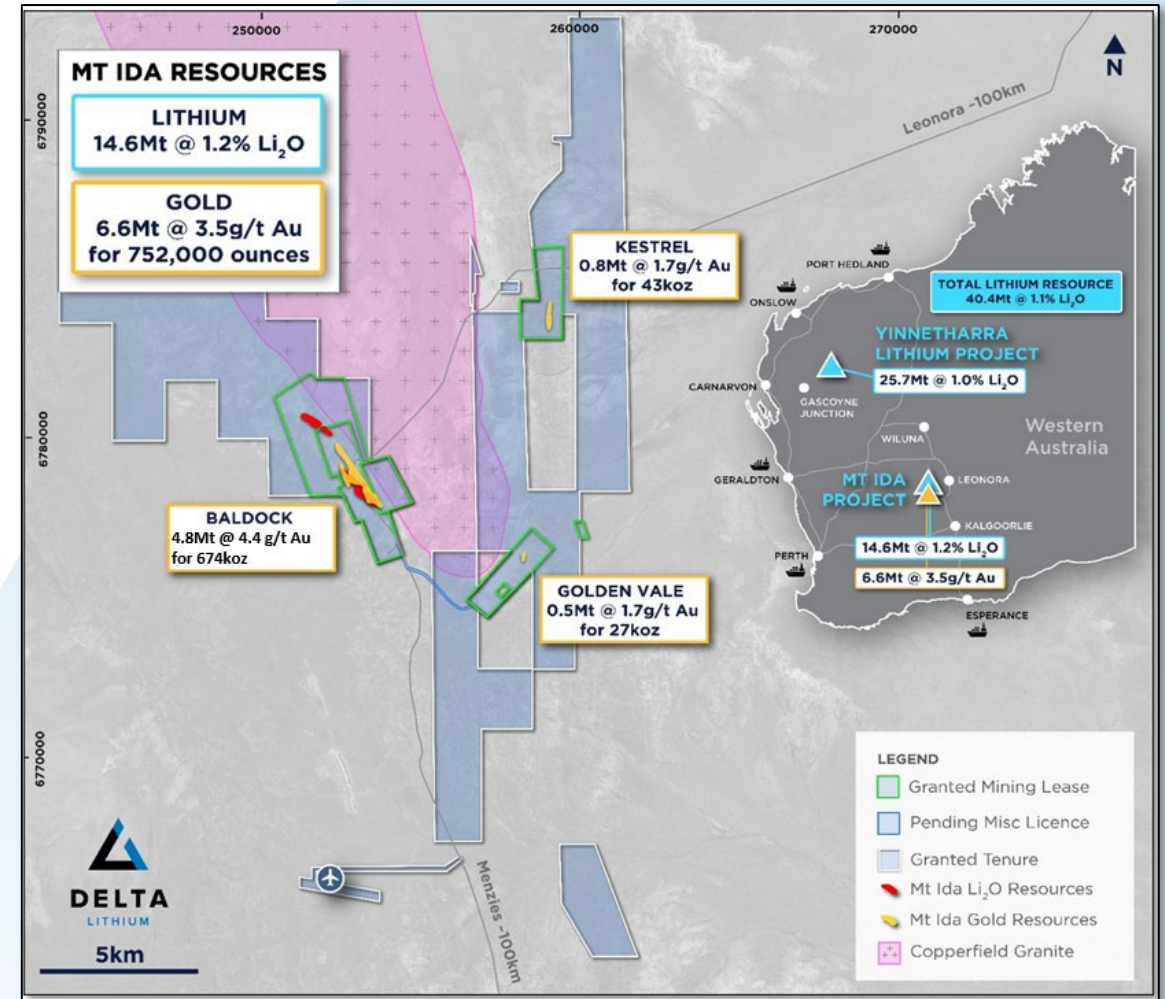
Li

**High-grade Iode Gold in a Proven Gold District**  
6.6Mt @ 3.5g/t Au for 752,000 oz

Au

includes the high-grade **Baldock Deposit**  
4.82Mt @ 4.4g/t Au for 674,000 oz

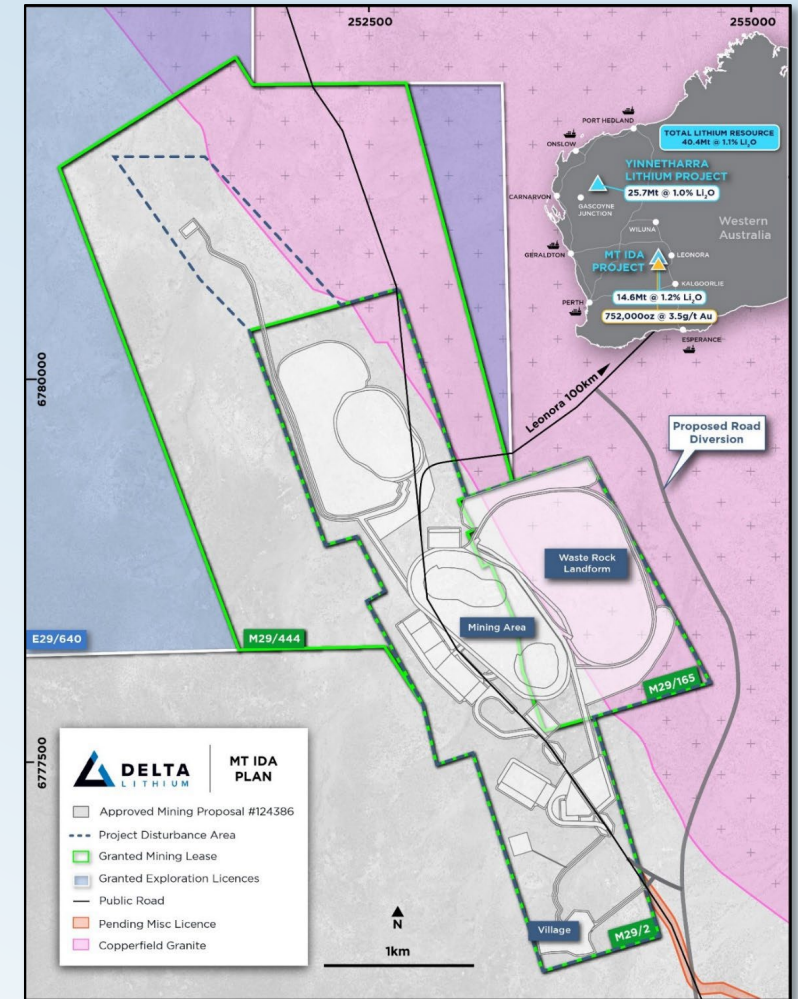
MRE's ON GRANTED MINING LEASES  
MINING APPROVALS IN PLACE  
WORKS APPROVAL FOR PROCESSING PLANT LODGED





# MT IDA GOLD RESOURCE

- ▶ **High-grade Mineral Resource** – Mt Ida is one of the very few, large, high-grade undeveloped gold projects in WA
- ▶ **Significant Exploration Upside** – RC & Diamond drilling underway to extend current resources and test highly prospective regional targets
- ▶ **World-class Location** – Tier 1 location, in the heart of WA's Eastern Goldfields
- ▶ **Clear Pathway to Production** – The Mt Ida Gold Project is situated on granted Mining Leases, fully permitted and shovel-ready
- ▶ **Development & Infrastructure Options** – potential as standalone operation given scale and grade or flexibility to toll treat given proximity to existing plants



# MT IDA GOLD RESOURCE

## Mt Ida Gold Mineral Resource Estimate

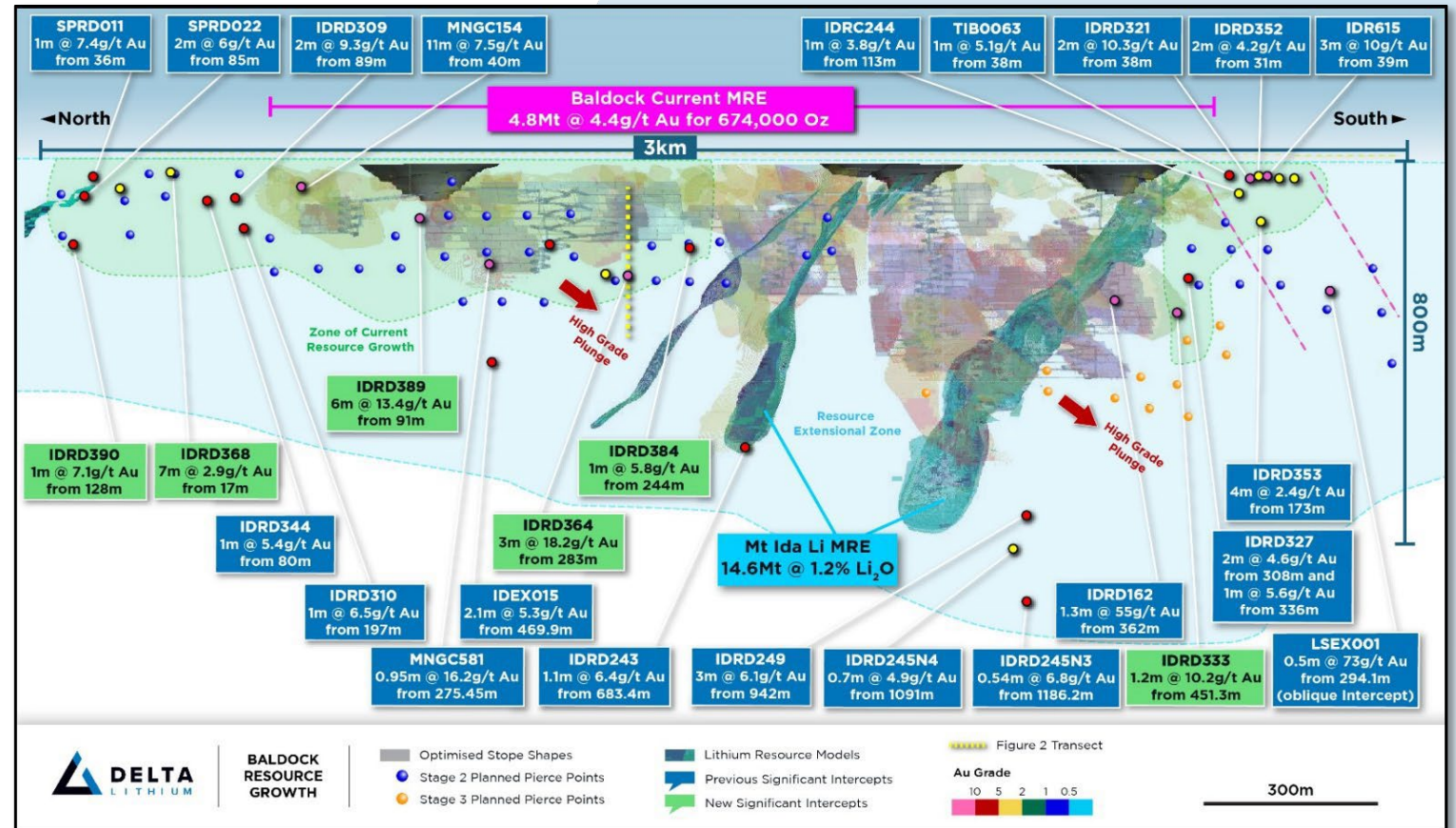
Cut off	Deposit	Indicated			Inferred			Total		
		Tonnes (000s)	Grade g/t Au	Ounces (000s)	Tonnes (000s)	Grade g/t Au	Ounces (000s)	Tonnes (000s)	Grade g/t Au	Ounces (000s)
All	Mt Ida Tailings				500	0.5	8	500	0.5	8
	Baldock	1,525	4.9	242.0	3,292	4.1	432	4,817	4.4	674
	Kestrel	-	-	-	790	1.7	43	790	1.7	43
	Golden Vale	-	-	-	496	1.7	27	496	1.7	27
	Total	1,525	4.9	242.0	5,078	3.1	510	<b>6,603</b>	<b>3.5</b>	<b>752</b>



# MT IDA GOLD RESOURCE EXTENSIONS

## Targeted Gold drilling has nearly completed

- ▶ 4-Stage program 35→40,000m RC & DD commenced 3Q24
  - ▶ Target Baldock MRE extensions & high-grade shoots, then regional
  - ▶ Seeking to build 'stand-alone' scale
  - ▶ MRE update 2Q25
- then
- ▶ Infill drillout phase to enable Resource-Reserve conversion



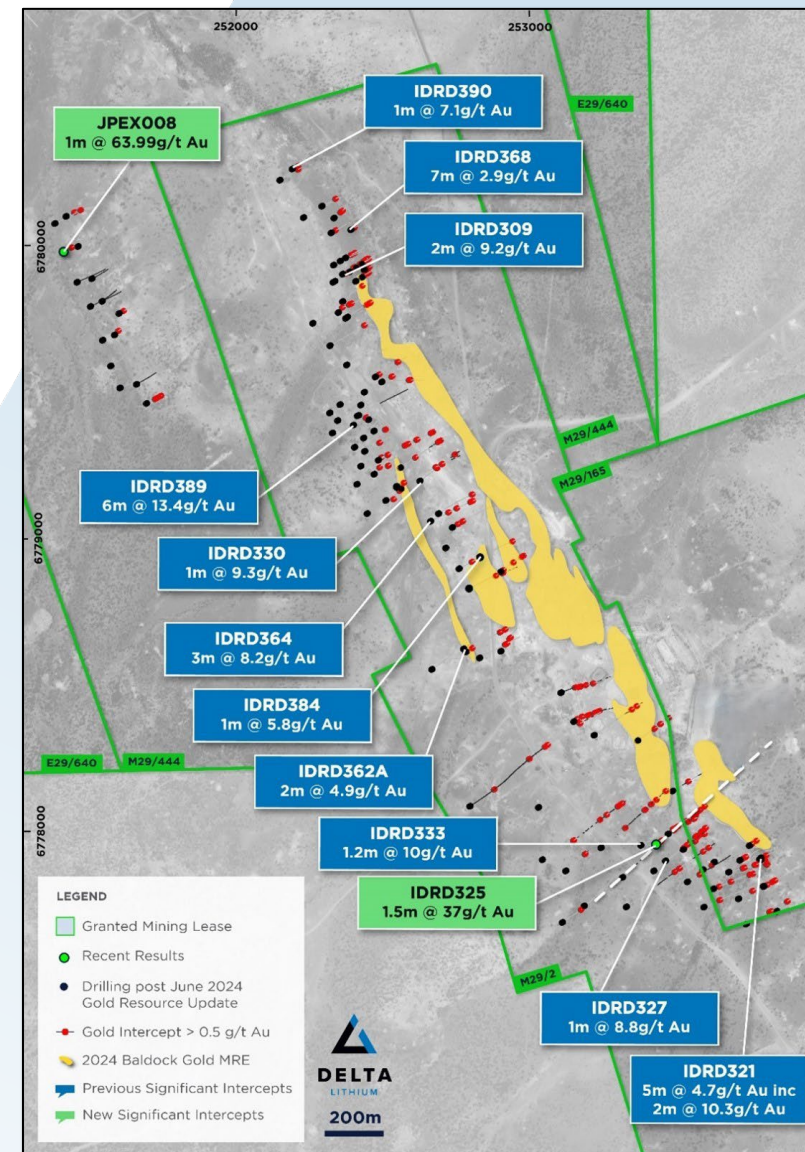


# MT IDA RECENT GOLD RESULTS

## Numerous results<sup>1</sup> outside the current Baldock MRE

- ▶ 3m @ 18.2 g/t Au from 283m in IDRD364
- ▶ 1.54m @ 37.3 g/t from 367.9m in IDRD325
- ▶ 6m @ 13.4 g/t Au from 91m in IDRD389
  - ▶ Including 3m @ 25.1g/t Au from 92m
- ▶ 1.2m @ 10.1 g/t Au from 410.5m in IDRD333
- ▶ 7m @ 2.9 g/t Au from 17m in IDRD368
- ▶ 2m @ 9.3 g/t Au from 83m in IDRD309
- ▶ 1m @ 6.5 g/t Au from 197m in IDRD310
- ▶ 5m @ 4.7 g/t Au from 38m in IDRD321
  - ▶ Including 2m @ 10.3g/t Au from 38m

1. Refer to ASX announcement 14 Nov 2024 "Activities Update from Mt Ida Gold Project", and ASX announcement 23 Jan 2025 "Mt Ida Exploration Update", and ASX announcement 26 Mar 2025 "Mt Ida Gold Exploration and Permitting Update"



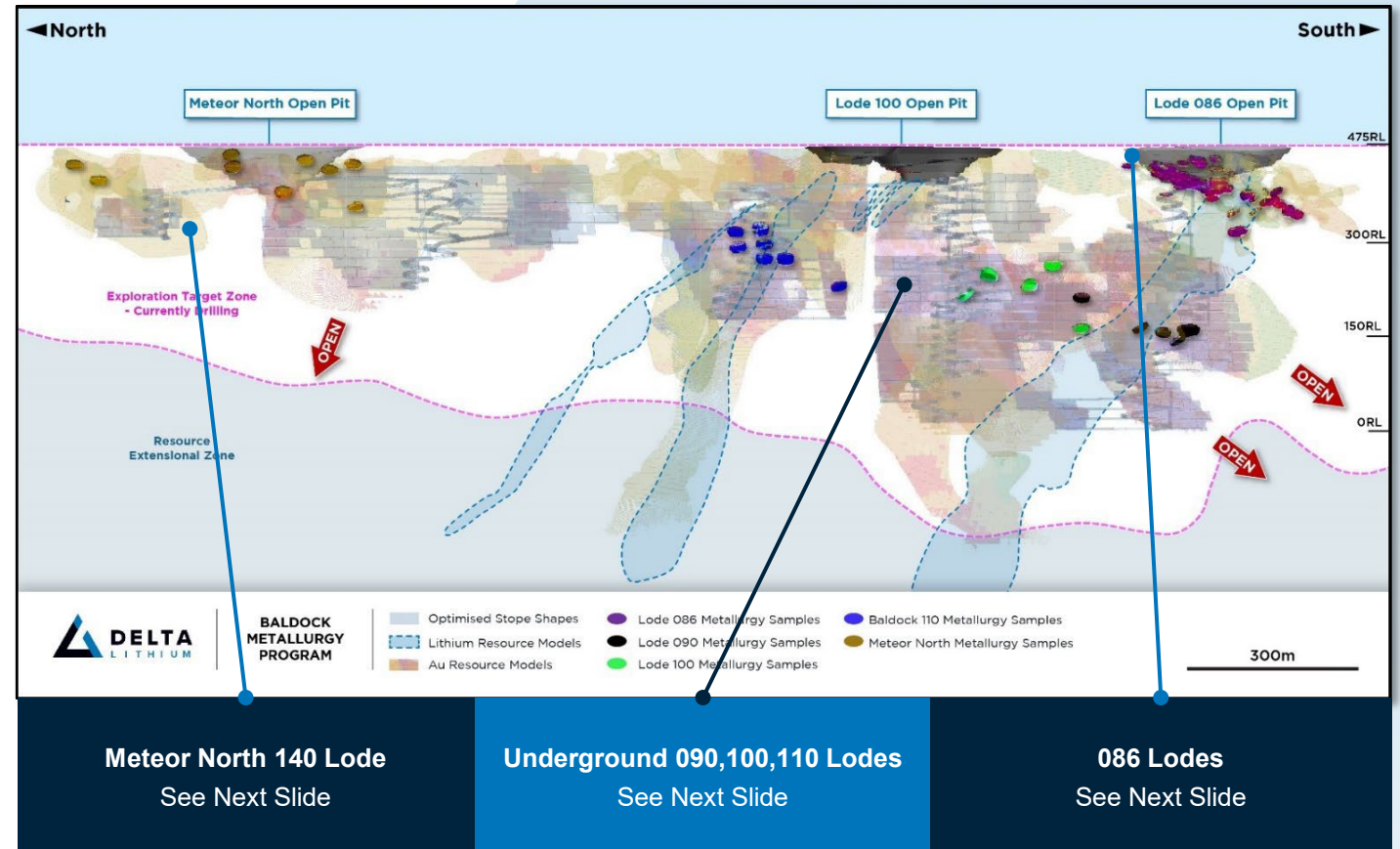
# MT IDA GOLD RESOURCE - Baldock Metallurgy

## Grind-size variability testwork yields favourable results

### ► Baldock 5 Main Lodes

086, 090, 100, 110, 140 amenable to standard crush/grind/CIL adsorption

- Representative samples composited with good spatial variability
- 24hr leach recoveries avg.+90%
- Copper does not appear problematic





# MT IDA GOLD RESOURCE - BALDOCK METALLURGY

## Meteor North 140 Lode

Meteor North Open Pit & Underground	Grind Size (P80) micron	Calc head grade (g/t)	Gravity Gold (%)	24-hr Au Extraction (%)
Oxide	140	2.6	18	93
	106	2.6	18	95
	75	2.4	20	95
Transitional	140	3.4	18	85
	106	3.3	18	88
	75	3.3	19	95
Fresh	140	5.1	33	84
	106	5.9	29	87
	75	5.6	30	89

## Underground 090,100,110 Lodes

Underground Master Composites	Grind Size (P80) micron	Calc head grade (g/t)	Gravity Gold (%)	24-hr Au Extraction (%)
090 Lode	140	8.3	27	94
	106	7.0	32	93
	75	7.4	30	96
100 Lode	140	15.0	47	95
	106	30.8	23	94
	75	15.4	45	96
110 Lode	140	6.2	33	88
	106	6.1	33	89
	75	5.9	34	91

## 086 Lodes

086 Open Pit & Underground	Grind Size (P80) micron	Calc head grade (g/t)	Gravity Gold (%)	24-hr Au Extraction (%)
Oxide	75	4.8	44	98
	140	4.8	60	95
Transitional	106	4.7	65	99
	75	6.1	63	99
Fresh	140	4.6	52	94
	106	4.4	58	97
	75	3.0	57	96

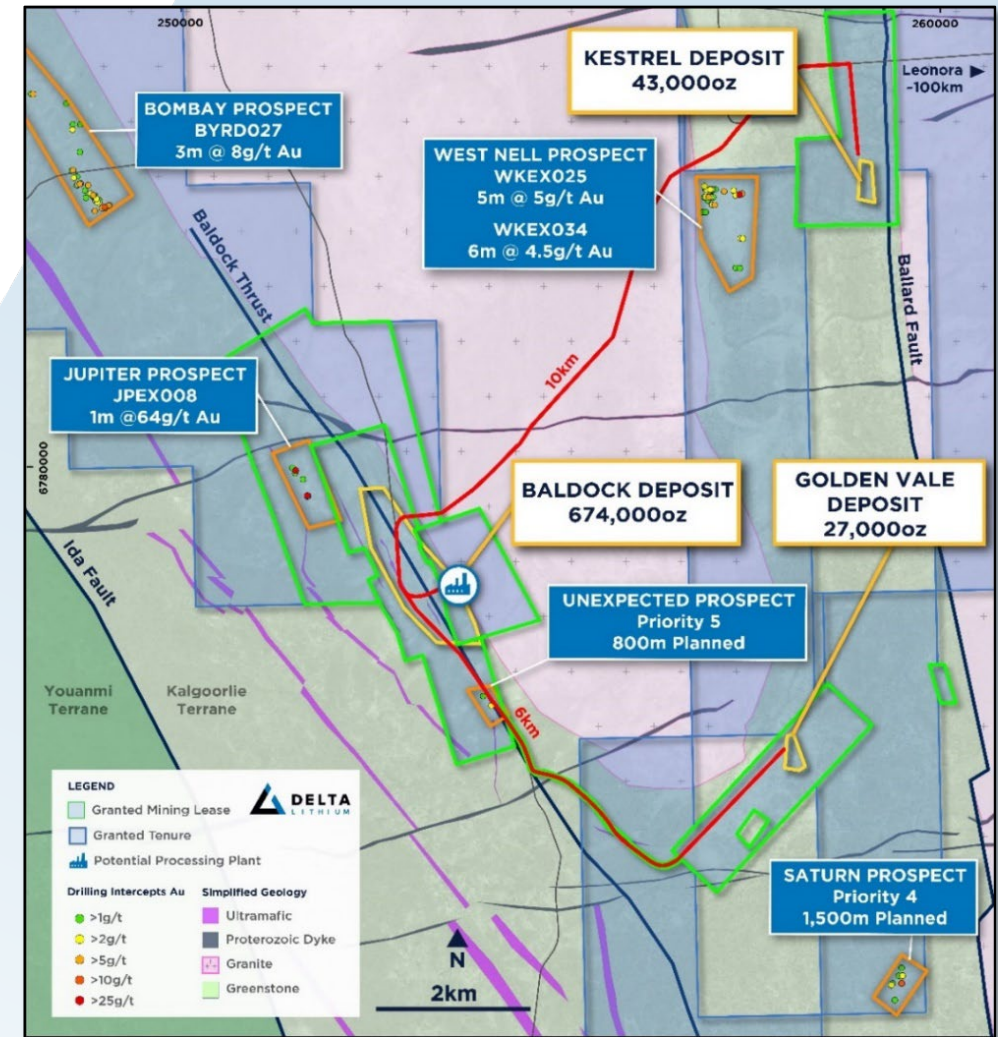


# MT IDA GOLD REGIONAL

- ▶ Numerous high-grade historical gold intercepts along +20km perimeter of Copperfield Granite
- ▶ Strategic geographical position in the Eastern Goldfields corridor
  - 6+ processing plants within 200kms
- ▶ 12,000m regional RC is stage 4 of current program
- ▶ Early results<sup>1</sup> from stage 4:

HoleID	Prospect	From	Width (m)	g/t
BYRD027	Bombay	148	3	7.9
JPEX008	Jupiter	45	1	64.0
WKEX025	West Nell	67	5	5.76
WKEX034	West Nell	74	6	4.41
WKEX039	West Nell	56	2	4.07
WKEX040	West Nell	150	7	2.01

<sup>1</sup> Refer ASX Announcement 26 March 2025 titled "Mt Ida Gold Exploration and Permitting Update"



*Plan view of regional prospects in relation to Baldock with some recent significant Intercepts*

# YINNETHARRA LITHIUM PROJECT

GROWING A DISCOVERY  
IN THE EMERGING  
GASCOYNE PROVINCE

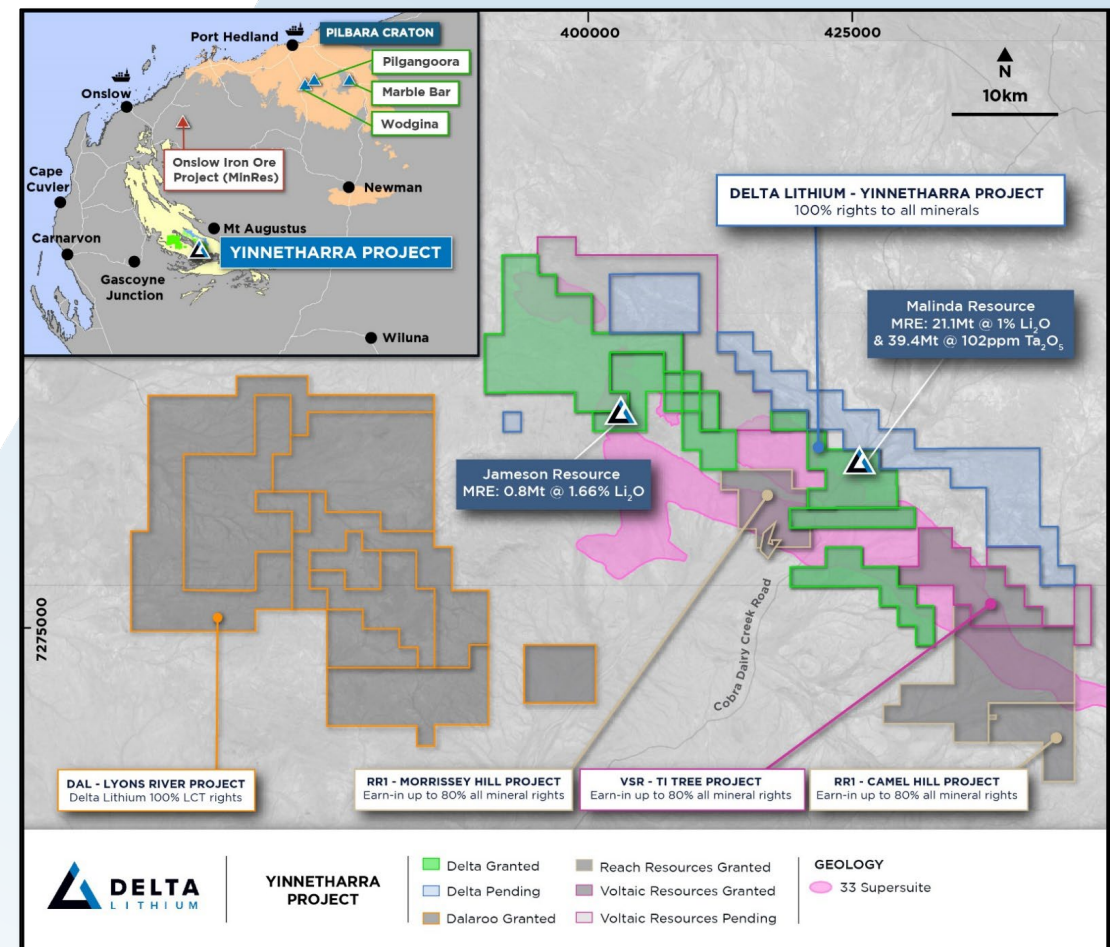




# YINNETHARRA LITHIUM PROJECT

## SOLID PROGRESS AT YINNETHARRA

- ▶ Delta is centre-stage in a newly emerging Gascoyne Lithium Province
- ▶ JORC Lithium MRE at Malinda
  - 21.9Mt @ 1.0% Li<sub>2</sub>O** (at a 0.5% Li<sub>2</sub>O cut-off grade)
- ▶ Dominant 1,769km<sup>2</sup> Gascoyne exploration project, including +80kms strike of prospective sediment/mafic lithologies
- ▶ Significant scale and grade – potential to grow through numerous Prospects
- ▶ Maiden High-grade Lithium MRE at the Jameson Prospect
  - 0.8Mt @ 1.66% Li<sub>2</sub>O** (at 0.5% Li<sub>2</sub>O cut-off grade)
- ▶ Tantalum firming up as a promising value-add





# YINNETHARRA LITHIUM PROJECT

## JORC LITHIUM MRE AT MALINDA

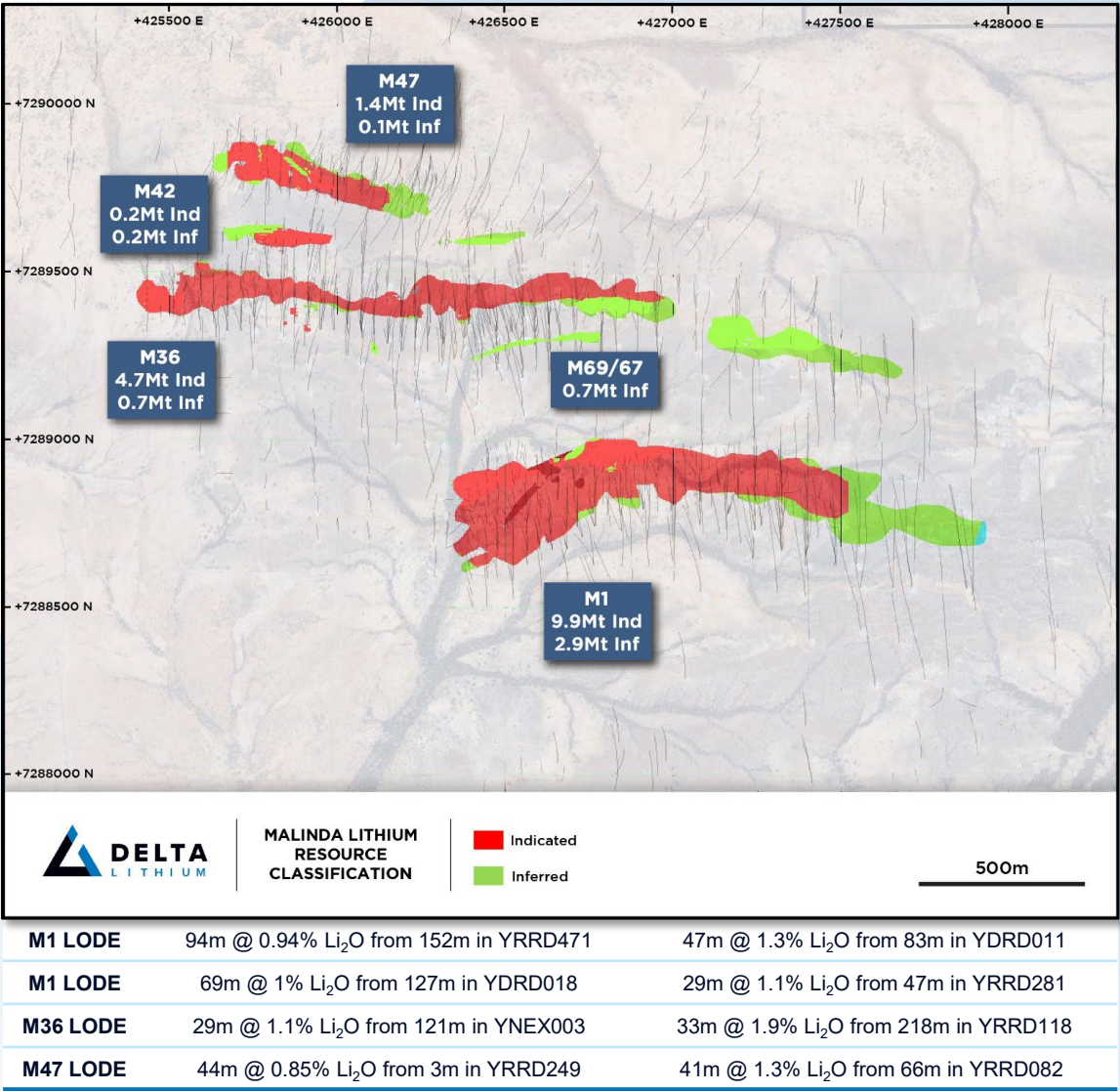
► 21.9Mt @ 1.0% Li<sub>2</sub>O (at a 0.5% Li<sub>2</sub>O cut off)<sup>1</sup>

Li	Resource category	Cut-off	Li <sub>2</sub> O			Ta <sub>2</sub> O <sub>5</sub>
		Grade (Li <sub>2</sub> O%)	Tonnes (Mt)	Grade (% Li <sub>2</sub> O)	Li <sub>2</sub> O (Kt)	Grade (Ta <sub>2</sub> O <sub>5</sub> ppm)
Yinnetharra	Measured	0.5	-	-	-	-
	Indicated		16.1	1.0	158	77
	Inferred		5.8	0.9	54	69
	<b>Total Resource</b>		<b>21.9</b>	<b>1.0</b>	<b>212</b>	<b>75</b>

1. Refer to ASX announcement 31 March 2025 "Yinnetharra Lithium and Tantalum MRE Update"

# MALINDA PROSPECT

- ▶ Three main LCT pegmatites M1, M36, M47 – all with excellent widths and high-grade lithium assays
- ▶ Mineralisation is present from surface to a depth of at least 350m striking E-W for over 2km
- ▶ Feasibility level M1 metallurgy completed via 5t pilot process
- ▶ Low-grade variability testwork on M1 successful. M36 & M47 programs commenced
- ▶ Geometallurgical domaining underway across all pegmatites



# MALINDA PROSPECT

## Metallurgy testwork progression for M1 pegmatite

Grades	Units	Batch	Locked Cycle	Pilot Plant
Feed Grade	%Li <sub>2</sub> O	1.0	1.0	1.0
Concentrate Grade	%Li <sub>2</sub> O	6.0	5.5	5.7
Recovery Breakdown				
Deslime Losses	%Li <sub>2</sub> O	3.9	3.9	4.2
Mags Losses	%Li <sub>2</sub> O	3.4	3.4	2.8
Mica Prefloat Losses	%Li <sub>2</sub> O	6.4	9.9	6.1
Spodumene Float Losses	%Li <sub>2</sub> O	4.6	6.5	17.7
Global Recovery	%Li <sub>2</sub> O	<b>81.8</b>	<b>76.4</b>	<b>69.2</b>



Pilot plant spodumene flotation circuit during operation



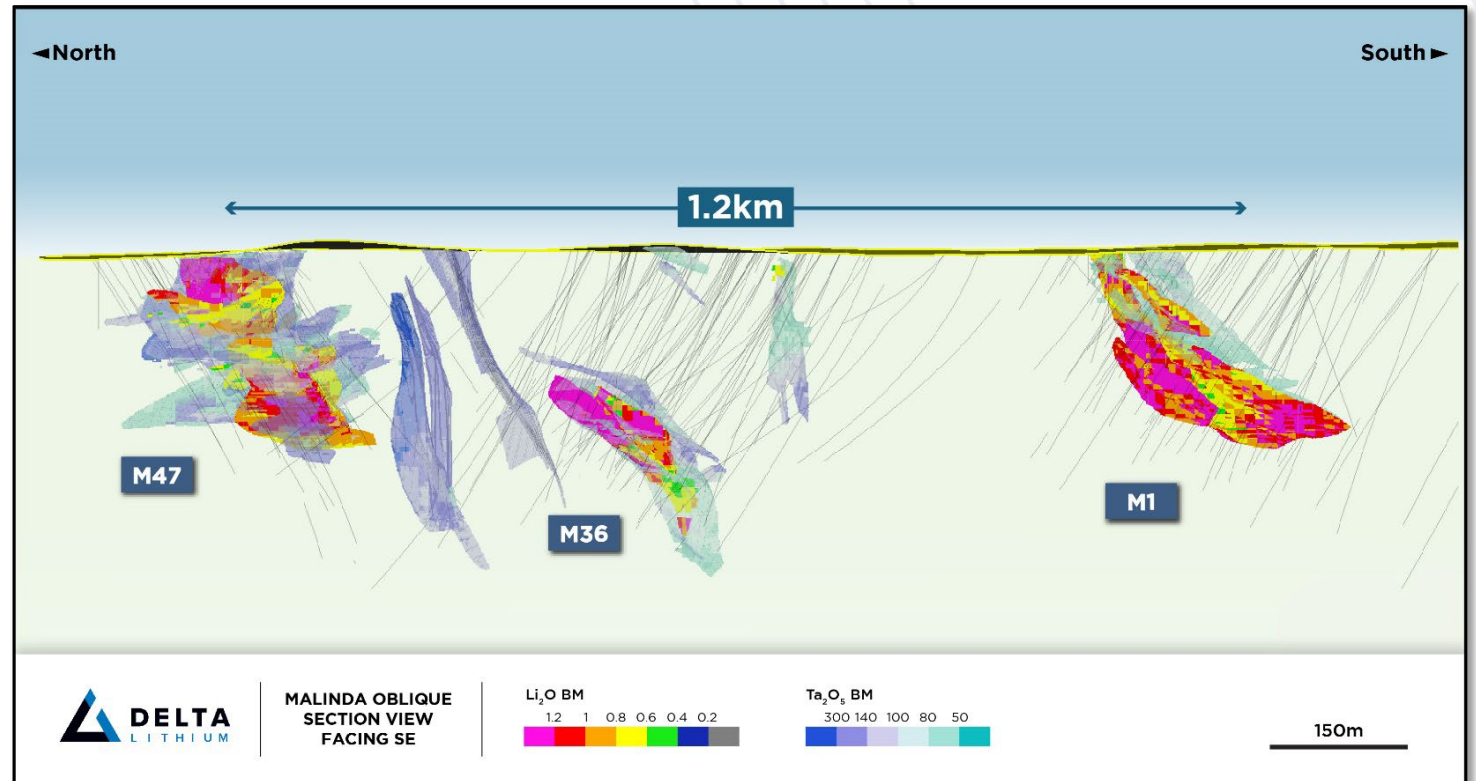
# YINNETHARRA LITHIUM PROJECT

- ▶ Investigate a growing Tantalum MRE
- ▶ Updated Tantalum MRE calculated OUTSIDE the Lithium wireframes of:

**17.5Mt @ 136ppm  $\text{Ta}_2\text{O}_5$**

- ▶ Sits within current resource pit shells used for MRE estimations
- ▶ TOTAL Malinda Tantalum MRE is:

**39.4Mt @ 102ppm  $\text{Ta}_2\text{O}_5$**



Spatial relationship Lithium and Tantalum

# YINNETHARRA LITHIUM PROJECT

## EXPLORATION PROGRAM 2025

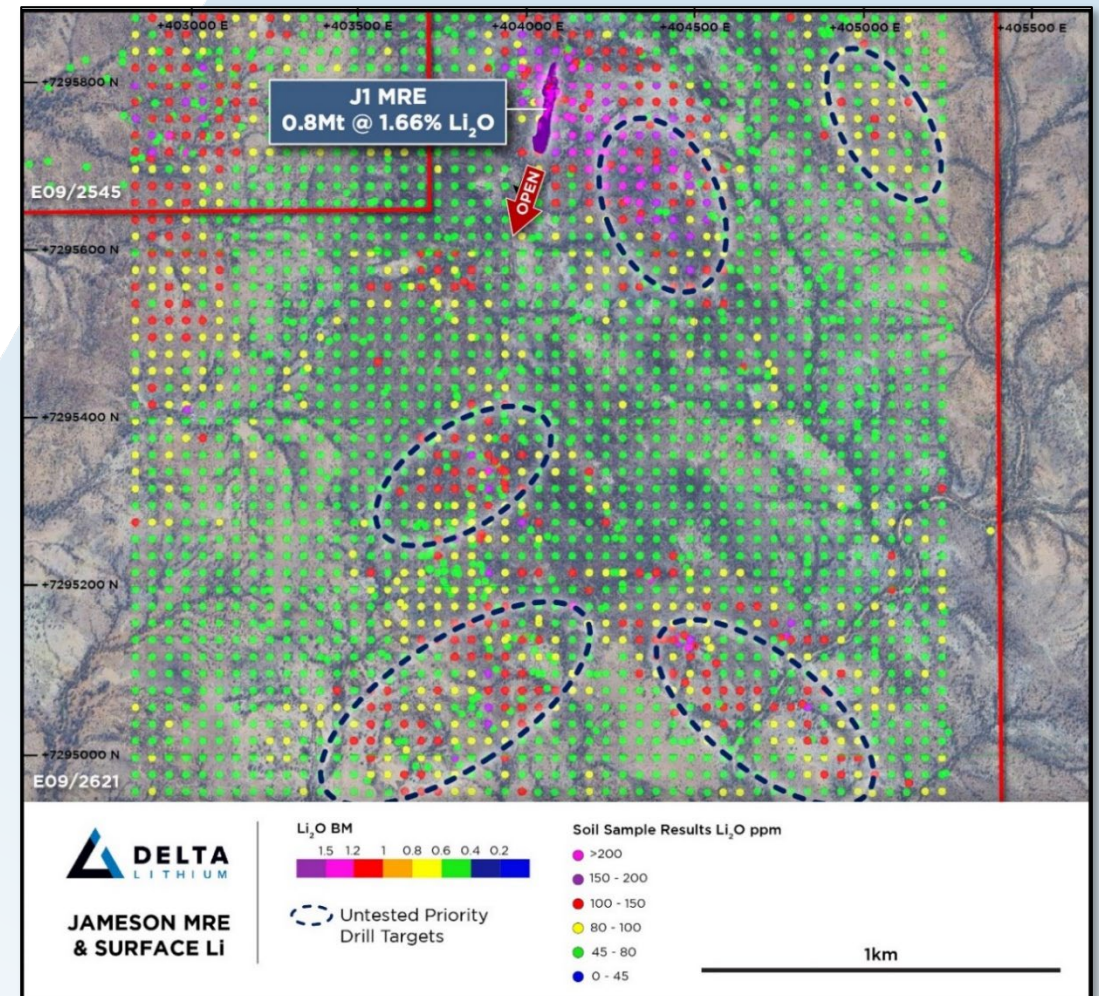
- ▶ Regional field work commenced CY2025 including soil sampling and mapping to target new Prospects
- ▶ Geotechnical drilling across Malinda completed
- ▶ Scheduled heritage, flora and fauna surveys
- ▶ Focus on hydrogeology with seismic survey planned for April
- ▶ Regulatory Approvals & Native Title discussions ongoing
- ▶ Follow-up drilling at **Jameson** a high priority



JREX002 UV response 43-47m with Li<sub>2</sub>O assays

<b>JREX001</b>	16m @ 1.7% Li <sub>2</sub> O from 26m*
<b>JREX002</b>	71m @ 1.2% Li <sub>2</sub> O from 27m*
<b>JREX012</b>	18m @ 1.5% Li <sub>2</sub> O from 13m*

\*intercepts are not representative of true width





# THE DELTA STRATEGY

## PLAN FOR SUCCESS – EXECUTE THE PLAN



**STRONG FOCUS ON CAPITAL ALLOCATION  
& CASH PRESERVATION**



**BUILDING UPON CONFIDENCE AT YINNETHARRA**



**GOAL IS TO DEVELOP AN OPERATING MINE**



**MOVING TOWARDS MONETISING GOLD TO FUND  
GROWTH**



**OPEN TO ACQUISITIONS THAT COMPLIMENT OUR  
STRATEGY**



### Premium Locations

- ▶ Hardrock Lithium Capital of the World



### Our Team

- ▶ Results driven with proven hardrock lithium experience



### Major Shareholders

- ▶ Proven hardrock lithium partners



### Yinnetharra

- ▶ JORC Lithium resource 21.9Mt @ 1.0% Li<sub>2</sub>O
- ▶ Tier one potential with Dominant Landholding under-explored
- ▶ New Discovery at Jameson



### Mt Ida

- ▶ JORC Lithium resource 14.6 Mt @ 1.2% Li<sub>2</sub>O
- ▶ JORC Gold resource 6.6Mt @ 3.5g/t Au for 752koz
- ▶ Mining Approval granted



### Upcoming Catalysts

- ▶ Exploration results incoming and JORC resource updates
- ▶ Mining and metallurgy studies progressing
- ▶ Bluesky upside via Gold



# Thank you.



# GROUP MINERAL RESOURCE ESTIMATES

## Lithium Mineral Resource Estimates

Delta Lithium Group Mineral Resource Estimate						
	Resource Category	Cut-off grade (%Li <sub>2</sub> O)	Tonnes (Mt)	Li <sub>2</sub> O Grade (%Li <sub>2</sub> O)	Li <sub>2</sub> O (Kt)	Grade (Ta <sub>2</sub> O <sub>5</sub> ppm)
Yinnetharra	Measured	0.5	-	-	-	-
	Indicated		16.1	1.0	158	77
	Inferred		5.8	0.9	54	69
	<b>Total Resource</b>		<b>21.9</b>	<b>1.0</b>	<b>212</b>	<b>75</b>
Mt Ida	Measured	0.5	-	-	-	-
	Indicated		7.8	1.3	104	224
	Inferred		6.8	1.1	76	154
	<b>Total Resource</b>		<b>14.6</b>	<b>1.2</b>	<b>180</b>	<b>191</b>
Total Measured			-	-	-	-
Total Indicated			23.9	1.1	262	125
Total Inferred			12.6	1.0	130	115
<b>Total</b>			<b>36.5</b>	<b>1.1</b>	<b>392</b>	<b>121</b>

Notes: Tonnages and grades have been rounded to reflect the relative uncertainty of the estimate. Inconsistencies in the totals are due to rounding.

Refer to ASX announcement 31 March 2025 "Yinnetharra Lithium and Tantalum MRE Update"

Refer to announcement 3 October 2023 "Mt Ida Lithium Project Mineral Resource Estimate upgrade"



# GROUP MINERAL RESOURCE ESTIMATES

## Mt Ida Gold Mineral Resource Estimate

Cut off	Deposit	Indicated	Inferred	Total	Indicated	Inferred	Total	Indicated	Inferred	Total
		Tonnes (000s)	Grade g/t Au	Ounces (000s)	Tonnes (000s)	Grade g/t Au	Ounces (000s)	Tonnes (000s)	Grade g/t Au	Ounces (000s)
Open cut Au 0.5 g/t	Baldock	1,345	4.9	209.0	1,512	3.2	158	2,857	4.0	367
	Kestrel	-	-	-	570	1.6	29	570	1.6	29
	Golden Vale	-	-	-	496	1.7	27	496	1.7	27
0.0 g/t Au Cut off	Mt Ida Tailings	-	-	-	500	0.5	8	500	0.5	8
Underground 1.5 g/t Au	Baldock	180	5.8	33.0	1,780	4.8	274	1,960	4.9	307
	Kestrel	-	-	-	220	1.9	14	220	1.9	14
	Golden Vale	-	-	-	-	-	-	-	-	-
All	Mt Ida Tailings				500	0.5	8	500	0.5	8
	Baldock	1,525	4.9	242.0	3,292	4.1	432	4,817	4.4	674
	Kestrel	-	-	-	790	1.7	43	790	1.7	43
	Golden Vale	-	-	-	496	1.7	27	496	1.7	27
<b>Total</b>		<b>1,525</b>	<b>4.9</b>	<b>242.0</b>	<b>5,078</b>	<b>3.1</b>	<b>510</b>	<b>6,603</b>	<b>3.5</b>	<b>752</b>

Refer to ASX Announcement 28 Jun 2024 "Major Upgrade to Mt Ida Gold Resource"

# GROUP MINERAL RESOURCE ESTIMATES

## Tantalum Mineral Resource Estimates

### Yinnetharra Tantalum ONLY Resource March 2025

Area	Resource category	Cut-off grade (Ta <sub>2</sub> O <sub>5</sub> ppm)	Tonnes (Mt)	Li <sub>2</sub> O%	Li <sub>2</sub> O (Kt)	Ta <sub>2</sub> O <sub>5</sub> ppm	Ta <sub>2</sub> O <sub>5</sub> (Kt)
MALINDA	Measured	65	-	-	-		-
	Indicated		10.4	0.1	12	122	1.3
	Inferred		7.1	0.1	7	156	1.1
	Total Resource		17.5	0.1	19	136	2.4

*Note: Reported inside a RPEEE pit shell and below a 0.5% Li<sub>2</sub>O cut-off. Tonnages and grades have been rounded to reflect the relative uncertainty of the estimate. Inconsistencies in the totals are due to rounding.*



# BALDOCK '5 MAIN LODES' RESOURCE TABLE

Cut off	Deposit	Indicated					Inferred					Total				
		Tonnes (000s)	Grade g/t Au	Au Ounces (000s)	Grade	Cu Tonnes Cu %	Tonnes (000s)	Grade g/t Au	Au Ounces (000s)	Grade	Cu Tonnes Cu %	Tonnes (000s)	Grade g/t Au	Au Ounces (000s)	Grade	Cu Tonnes Cu %
OP Au 0.5 g/t	086 Lodes	213	3.61	26	0.07	0.2	31	1.00	1	0.06	0.0	243	3.3	26	0.08	0.2
	Lode 090	14	3.86	1.8	0.03	0.0	124	3.14	12	0.01	0.0	138	3.21	14	0.01	0.1
	Lode 100	145	12.76	60	0.44	0.6	92	9.01	27	0.37	0.3	237	11.31	86	0.41	0.9
	Lode 110	250	6.97	56	0.43	1.2	127	5.34	22	0.40	0.5	377	6.42	78	0.42	1.7
	Lode 140	191	5.37	33	0.18	0.3	128	4.65	19	0.14	0.2	319	5.09	52	0.17	0.5
UG 1.5 g/t Au	086 Lodes	12	2.88	1	0.19	0.0	48	5.37	8	0.16	0.1	60	4.9	9	0.05	0.1
	Lode 090	53	7.85	13	0.38	0.2	313	8.40	85	0.34	1.1	366	8.36	98	0.25	1.3
	Lode 100	28	10.37	9	0.39	0.1	225	6.86	50	0.26	0.6	253	7.25	59	0.34	0.7
	Lode 110	15	7.48	4	0.55	0.1	114	6.47	24	0.43	0.5	129	6.6	28	0.44	0.6
	Lode 140	11	2.68	1	0.14	0.0	218	3.77	26	0.12	0.3	229	3.72	27	0.12	0.3
All	086 Lodes	225	3.57	27	0.07	0.2	79	3.80	9	0.12	0.1	303	3.62	35	0.08	0.3
	Lode 090	67	7.00	15	0.30	0.2	437	6.90	97	0.24	1.1	504	6.89	112	0.25	1.3
	Lode 100	173	12.40	69	0.43	0.7	317	7.50	77	0.30	0.9	490	9.18	145	0.37	1.6
	Lode 110	265	7.00	60	0.44	1.3	241	5.90	46	0.41	1.0	506	6.50	106	0.43	2.3
	Lode 140	202	5.20	34	0.18	0.3	346	4.00	45	0.13	0.5	548	4.51	79	0.14	0.8
Total		932	6.80	205	0.28	2.7	1,420	6	273.7	0.25	3.5	2,352	6.3	477	0.27	6.2

# BALDOCK METALLURGY COMPOSITE RESULTS

## 086 Lode

Comp ID	Test ID	Grind Size P80 (µm)	Start	Head Au Grade (g/t)		Au Extraction (%)						Tail Au Grade (g/t)	Reagents (kg/t)	
			NaCN (ppm)	Assay	Calc.	Grav	2-hr	4-hr	8-hr	24-hr	48-hr		NaCN	Lime
OXIDE GOLD ORE MASTER COMPOSITE # 1	IM2078	75	1000	4.55 / 3.55	4.76	44.14	84.20	86.93	91.40	97.83	99.26	0.04	0.54	7.43
	IM2190	140	1000	8.73 / 4.13	4.84	60.38	92.21	93.68	93.68	95.04	95.04	0.24	0.74	9.22
	IM2191	106	1000		4.70	64.64	94.26	98.78	98.78	100.18	98.83	0.06	0.56	8.22
TRANSITIONAL GOLD ORE MASTER COMPOSITE # 2	IM2079	75	1000		3.44	34.78	95.39	97.07	99.95	99.95	97.96	0.07	0.68	8.73
	IM2192	140	1000	3.17 / 3.83	4.57	52.30	86.00	90.65	92.14	93.58	94.97	0.23	1.20	7.44
	IM2193	106	1000		4.40	57.51	84.17	90.61	93.71	96.70	96.70	0.15	0.96	7.80
FRESH GOLD ORE MASTER COMPOSITE # 3	IM2080	75	1000		3.02	56.61	91.32	92.03	93.44	95.74	96.19	0.12	1.25	7.68



# BALDOCK METALLURGY COMPOSITE RESULTS

## Underground 090, 100, 110 Lode Composites

Comp ID	Test ID	Grind Size P80 (µm)	Start	Head Au Grade (g/t)		Au Extraction (%)						Tail Au Grade (g/t)	Reagents (kg/t)	
			NaCN (ppm)	Assay	Calc.	Grav	2-hr	4-hr	8-hr	24-hr	48-hr		NaCN	Lime
CORE (UNDERGROUND) 090 GOLD ORE MASTER COMPOSITE # 1	IM2300	140	1000	29.5 / 11.3 / 16.2 / 7.73	8.25	27.36	55.01	69.56	84.03	93.85	95.52	0.37	0.77	2.58
	IM2301	106	1000		6.97	32.37	65.93	76.93	88.34	92.55	95.70	0.30	1.25	2.60
	IM2302	75	1000		7.41	30.45	65.60	77.12	90.36	95.63	95.82	0.31	1.44	3.13
CORE (UNDERGROUND) 100 GOLD ORE MASTER COMPOSITE # 2	IM2303	140	1000	22.6 / 21.4 / 6.93 / 14.2	15.0	46.55	68.88	85.25	92.25	95.41	96.14	0.58	0.84	2.50
	IM2304	106	1000		30.8	22.68	41.30	47.68	51.32	93.68	98.57	0.44	0.91	2.73
	IM2305	75	1000		15.4	45.42	77.73	87.69	93.33	95.77	97.47	0.39	0.95	3.43
CORE (UNDERGROUND) 110 GOLD ORE MASTER COMPOSITE # 3	IM2306	140	1000	30.1 / 27.9 / 4.45 / 6.26	6.16	33.07	72.71	82.10	85.10	87.82	89.37	0.66	1.05	3.55
	IM2307	106	1000		6.10	33.42	75.41	83.47	87.43	89.27	91.07	0.55	1.12	3.65
	IM2308	75	1000		5.94	34.33	79.95	85.55	89.62	91.27	93.35	0.40	1.90	3.45

# BALDOCK METALLURGY COMPOSITE RESULTS

## Meteor North 140 Lode

	Test ID	Grind Size P80 (µm)	Start NaCN (ppm)	Head Au Grade (g/t)		Au Extraction (%)						Tail Au Grade (g/t)	Reagents (kg/t)	
				Assay	Calc.	Grav	2-hr	4-hr	8-hr	24-hr	48-hr		NaCN	Lime
MNGC OXIDE GOLD ORE MASTER COMPOSITE # 1	IM2269	140	1000	2.43 / 2.48 / 2.32 / 2.27 / 2.08	2.64	18.03	77.66	82.04	87.43	92.71	93.75	0.17	0.48	9.97
	IM2270	106	1000		2.64	18.04	81.06	86.54	90.85	94.56	95.08	0.13	0.41	10.23
	IM2271	75	1000		2.39	19.95	87.80	90.83	93.22	94.97	94.97	0.12	0.35	11.64
MNGC OXIDE GOLD ORE MASTER COMPOSITE # 1	IM2272	140	1000	3.94 / 3.98 / 3.93 / 3.46 / 3.23	3.39	18.11	33.97	45.07	59.76	84.70	86.72	0.45	3.16	7.09
	IM2273	106	1000		3.32	18.49	33.56	47.95	67.22	88.26	91.57	0.28	3.58	6.78
	IM2274	75	1000		3.32	18.51	25.83	38.04	61.41	94.69	95.93	0.14	3.55	7.32
MNGC OXIDE GOLD ORE MASTER COMPOSITE # 1	IM2275	140	1000	7.48 / 11.4 / 5.99 / 5.60 / 5.68	5.13	33.11	47.75	65.53	79.68	84.04	86.44	0.70	2.02	5.84
	IM2276	106	1000		5.90	28.77	50.60	72.06	83.14	87.17	89.49	0.62	1.70	5.47
	IM2277	75	1000		5.61	30.27	58.62	78.23	86.09	89.08	90.55	0.53	1.67	5.51



# IMPORTANT NOTICES AND DISCLAIMER

## DISCLAIMER

You must read the following notices before reading or making any use of this document or any information contained in this document. By continuing to read, use or otherwise act on this document, you agree to be bound by the following terms and conditions, including any modifications to them.

This presentation (Presentation) has been prepared by Delta Lithium Limited (ACN 107 244 039) (ASX:DLI) (the Company or Delta).

### Summary information

This Presentation contains summary information about the Company and its activities current as at the date of release. The information in this Presentation is of a general nature and does not purport to be complete nor does it contain all information which a prospective investor may require in evaluating a possible investment in the Company or that would be required in a prospectus or product disclosure statement prepared in accordance with the requirements of the Corporations Act. The historical information in this Presentation is, or is based on, information that has been released to the ASX. This Presentation should be read in conjunction with the Company's other periodic and continuous disclosure announcements lodged with the ASX, which are available at [www.asx.com.au](http://www.asx.com.au). The information in this Presentation remains subject to change without notice.

Any market and industry data that may be used in connection with this Presentation may have been obtained from research, surveys or studies conducted by third parties, including industry or general publications. None of the Company, its representatives or advisers have independently verified that market or industry data provided by third parties or industry or general publications.

### Not an offer

This Presentation is not an offer or invitation to acquire securities or any other financial products and is not a prospectus, product disclosure statement or other offering document under Australian law (and will not be lodged with ASIC) or any other law. This Presentation is for information purposes only and is not an invitation or offer of securities for subscription, purchase or sale in any jurisdiction. This Presentation is not and should not be considered an offer or an invitation to acquire securities or any other financial products and does not and will not form any part of any contract for the acquisition of securities.

### Not financial product advice

This Presentation does not constitute financial product or investment advice or any recommendation to acquire securities or accounting, legal or tax advice. It has been prepared without taking into account the objectives, financial or tax situation or needs of individuals. Before making an investment decision, prospective investors should consider the appropriateness of the information having regard to their own objectives, financial and tax situation and needs and obtain legal and taxation advice appropriate to their jurisdiction. Delta is not licensed to provide financial product advice in respect of the securities or any other financial products.

### Investment risk

An investment in securities is subject to investment and other known and unknown risks, some of which are beyond the control of Delta including loss of income and principal invested. The Company does not guarantee any particular rate of return or performance or any particular tax treatment.

### Effect of rounding

A number of figures, amounts, percentages, estimates and calculations of value in this Presentation are subject to the effect of rounding.

### Past performance

Investors should note that past performance and any pro forma financial information given in this Presentation is given for illustrative purposes only and should not be relied on as (and is not) an indication of Delta's views on its future financial performance or condition. Prospective investors should note that past performance, including past share price performance, of Delta cannot be relied on as an indicator of (and provides no guidance as to) future performance including future share price performance. The historical information in relation to Delta included in this Presentation is, or is based on, information that has previously been released to the market.

### Forward-looking Statements and aspirational targets

Some statements in this Presentation regarding estimates or future events are forward-looking statements. They include indications of, and guidance on, future matters. Forward-looking statements include, but are not limited to, statements preceded by words such as "planned", "expected", "projected", "estimated", "may", "scheduled", "intends", "anticipates", "believes", "potential", "could", "nominal", "conceptual" and similar expressions. Forward-looking statements, opinions and estimates included in this Presentation are based on assumptions and contingencies which are subject to change without notice, as are statements about market and industry trends, which are based on interpretations of current market conditions.

Forward-looking statements are provided as a general guide only and should not be relied on as a guarantee of future performance. Forward-looking statements may be affected by a range of variables and risks that could cause actual results to differ from anticipated results and may cause Delta's actual performance and results (and other forward-looking statements) to materially differ from any projections of future performance or results expressed or implied by such forward-looking statements. Readers should not place undue reliance on such forward-looking information. There can be no assurance that forward-looking statements will prove to be correct.

This Presentation may include aspirational targets. These targets are based on management's expectations and beliefs concerning future events as of the time of the release of this Presentation. Targets are necessarily subject to risks, uncertainties and other factors, some of which are outside the control of Delta that could cause actual results to differ materially from such statements.

# IMPORTANT NOTICES AND DISCLAIMER

## COMPETENT PERSON STATEMENT

### JORC and Listing Rules Compliance Statement

Information in this Presentation that relates to exploration results is based upon work undertaken by Mr. Shane Murray, a Competent Person who is a Member of the Australasian Institute of Geoscientists (AIG). Mr. Murray has sufficient experience that is relevant to the style of mineralisation and type of deposit under consideration and to the activity which he is undertaking to qualify as a 'Competent Person' as defined in the 2012 Edition of the 'Australasian Code for Reporting of Exploration Results, Mineral Resources and Ore Reserves' (JORC Code). Mr. Hughes is an employee of Delta and consents to the inclusion in this Presentation of the matters based on his information in the form and context in which it appears.

Past Exploration Results and Mineral Resource estimates reported in this Presentation have been previously prepared and disclosed by Delta in accordance with the JORC Code. The information in this Presentation that relates to:

- ▶ exploration results are extracted from Delta's ASX announcements of:
- a) 19 October 2022 and entitled "Maiden Lithium Mineral Resource Estimate at Mt Ida", and for which the consent of the Competent Person, Mr Matthew Boyes, was obtained;
- b) 27 February 2023 entitled "Yinnetharra results confirm extensive near surface strike", and for which the consent of the Competent Person, Mr Charles Hughes, was obtained;
- c) 3 April 2023 entitled "Scale of the Yinnetharra Project continues to grow", and for which the consent of the Competent Person, Mr Charles Hughes, was obtained;
- d) 8 May 2023 entitled "Further shallow thick high-grade Lithium from Yinnetharra", and for which the consent of the Competent Person, Mr Charles Hughes, was obtained;
- e) 8 August 2023 entitled "Drilling update for Mt Ida Lithium", and for which the consent of the Competent Person, Mr Charles Hughes, was obtained;
- f) 21 August 2023 entitled "Excellent Yinnetharra Initial Metallurgical Results and Drilling Update" and for which the consent of the Competent Person, Mr Charles Hughes, was obtained,
- g) 4 September 2023 entitled "High grade gold results offer complementary cashflow opportunity at Mt Ida" and for which the consent of the Competent Person, Mr Charles Hughes, was obtained, and
- h) 14 March 2024 entitled "Yinnetharra Exploration Update" and for which the consent of the Competent Person, Mr Charles Hughes, was obtained.
- i) 22 April 2024 entitled "Company Update and First Jameson Result" and for which the consent of the Competent Person, Mr Charles Hughes, was obtained.
- j) 2 August 2024 entitled "Mt Ida and Yinnetharra Exploration Update" and for which the consent of the Competent Person, Mr Shane Murray, was obtained
- k) 27 August 2024 entitled "Delta advances Mt Ida Gold Project" and for which the consent of the Competent Person, Mr Shane Murray, was obtained
- l) 14 November 2024 entitled "Mt Ida Exploration Update" and for which the consent of the Competent Person, Mr Shane Murray, was obtained

- m) 24 January 2025 entitled "Mt Ida Exploration Update" and for which the consent of the Competent Person, Mr Shane Murray, was obtained
- n) 26 March 2025 entitled "Mt Ida Gold Exploration Results and Permitting Update" and for which the consent of the Competent Person, Mr Shane Murray, was obtained

- ▶ mineral resource estimates are extracted from Delta's ASX announcements of
- a) 19 October 2022 and entitled "Maiden Lithium Mineral Resource Estimate at Mt Ida", and for which the consents of the Competent Persons, Ms Justine Tracey and Mrs Christine Standing, was obtained;
- b) 3 October 2023 ASX announcement entitled "Mt Ida Lithium Project Mineral Resource Estimate upgrade" and for which the consent of the Competent Persons, Ms Susan Havlin and Dr Andrew Scogings was obtained;
- c) 11 October 2023 ASX announcement entitled "Mt Ida Maiden Gold Mineral Resource Estimate" and for which the consent of the Competent Persons, Ms Susan Havlin and Dr Andrew Scogings was obtained;
- d) 27 December 2023 ASX announcement entitled "Yinnetharra Lithium Project Maiden Mineral Resource Estimate", and for which the consent of the Competent Persons, Ms Susan Havlin and Dr Andrew Scogings was obtained.
- e) 28 June 2024 ASX announcement entitled "Major Upgrade for Mt Ida Gold Resource", and for which the consent of the Competent Persons, Ms Susan Havlin and Dr Andrew Scogings was obtained.
- f) 31 March 2025 ASX announcement entitled "Yinnetharra Lithium/Tantalum MRE Update", and for which the consent of the Competent Persons, Ms Susan Havlin and Dr Andrew Scogings was obtained

The Company confirms that it is not aware of any new information or data that materially affects the information included in these market announcements. The Company confirms that the form and content in which the Competent Person's findings are presented here have not been materially modified from the original market announcements, and all material assumptions and technical parameters underpinning Mineral Resource Estimates in the relevant market announcement continue to apply and have not materially changed. Refer to [www.deltalithium.com.au](http://www.deltalithium.com.au) for details on past exploration results and Mineral Resource estimates.

### JORC Code differs from reporting requirements in other countries

It is a requirement of the ASX Listing Rules that the reporting of ore reserves and mineral resources in Australia comply with the JORC Code. Investors outside Australia should note that while ore reserve and mineral resource estimates of the Company in this Presentation comply with the JORC Code, they may not comply with the relevant guidelines in other countries and, in particular, do not comply with (i) National Instrument 43-101 (Standards of Disclosure for Mineral Projects) of the Canadian Securities Administrators or (ii) Item 1300 of Regulation S-K, which governs disclosure of mineral reserves in registration statements filed with the US Securities and Exchange Commission.

Information contained in this Presentation describing mineral deposits may not be comparable to similar information made public by companies subject to the reporting and disclosure requirements of other countries. You should not assume that quantities reported as "resources" in this Presentation will be converted to reserves under the JORC Code or any other reporting regime or that Delta will be able to legally and economically extract them.