

# Briefing Book

# Disclaimer

This presentation has been prepared by St Barbara Limited (“Company”). The material contained in this presentation is for information purposes only. This presentation is not an offer or invitation for subscription or purchase of, or a recommendation in relation to, securities in the Company and neither this presentation nor anything contained in it shall form the basis of any contract or commitment.

This presentation may contain forward-looking statements that are subject to risk factors associated with exploring for, developing, mining, processing and the sale of gold. Forward-looking statements include those containing such words as anticipate, estimates, forecasts, should, will, expects, plans or similar expressions. Such forward-looking statements are not guarantees of future performance and involve known and unknown risks, uncertainties, assumptions and other important factors, many of which are beyond the control of the Company, and which could cause actual results or trends to differ materially from those expressed in this presentation. Actual results may vary from the information in this presentation. The Company does not make, and this presentation should not be relied upon as, any representation or warranty as to the accuracy, or reasonableness, of such statements or assumptions. Investors are cautioned not to place undue reliance on such statements.

This presentation has been prepared by the Company based on information available to it, including information from third parties, and has not been independently verified. No representation or warranty, express or implied, is made as to the fairness, accuracy or completeness of the information or opinions contained in this presentation. To the maximum extent permitted by law, neither the Company, their directors, employees or agents, advisers, nor any other person accepts any liability, including, without limitation, any liability arising from fault or negligence on the part of any of them or any other person, for any loss arising from the use of this presentation or its contents or otherwise arising in connection with it.

Non-IFRS financial information: We supplement our financial information reporting determined under International Financial Reporting Standards (“IFRS”) with certain non-IFRS financial measures, including cash operating costs. Details of these are set out in the Supplement.

Financial figures are in Australian dollars unless otherwise noted. Financial year is 1 July to 30 June. This presentation is not audited.

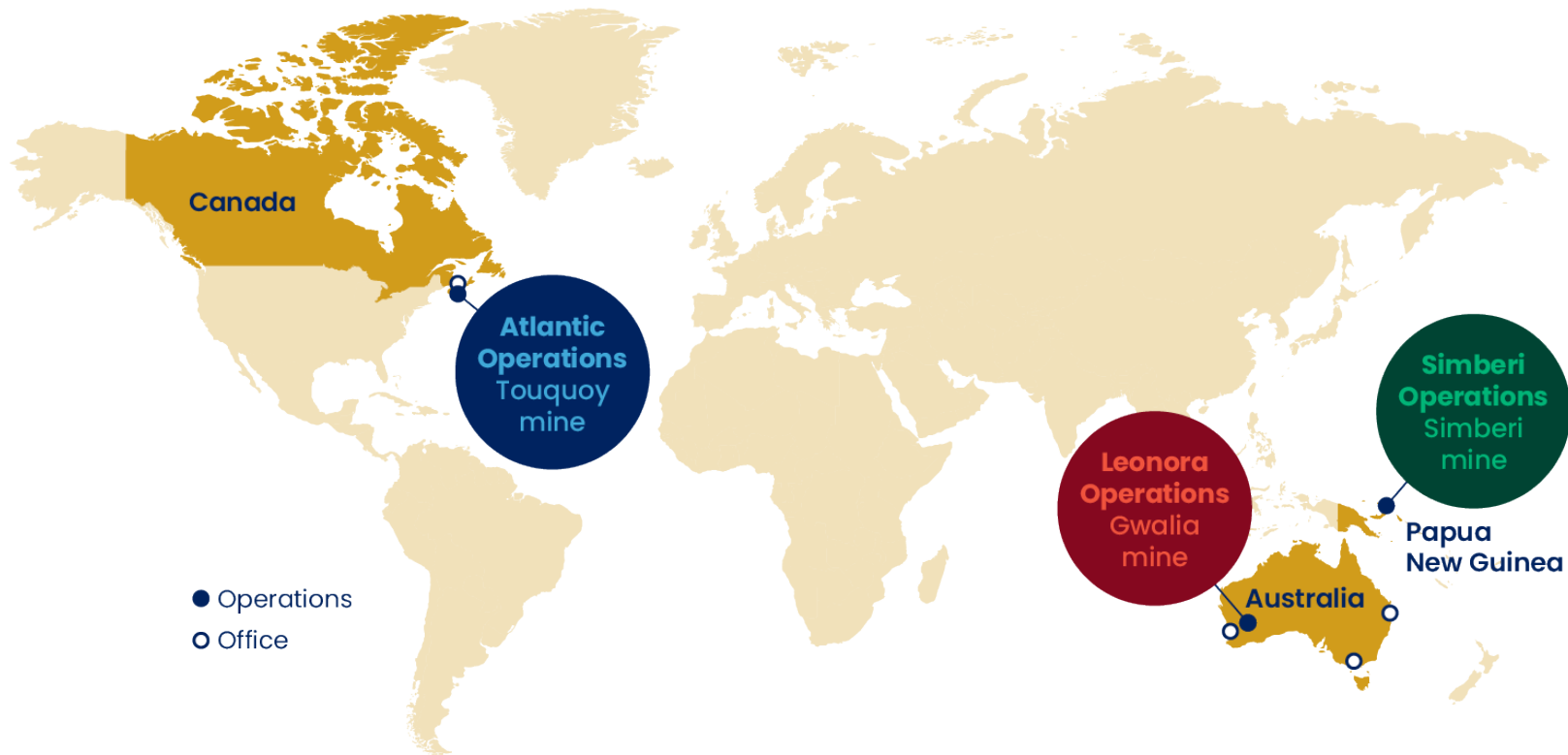
Australian Securities Exchange (ASX) Listing code “SBM”  
American Depositary Receipts (ADR OTC code “STBMY”) through BNY Mellon,  
[www.adrbnymellon.com/dr\\_profile.jsp?cusip=852278100](http://www.adrbnymellon.com/dr_profile.jsp?cusip=852278100)

**Published** 31 August 2022

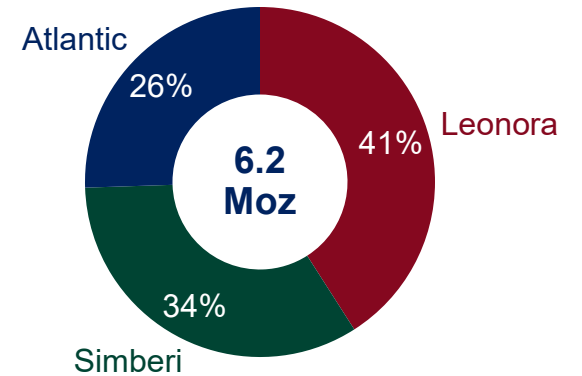


# A growing gold company with a global outlook

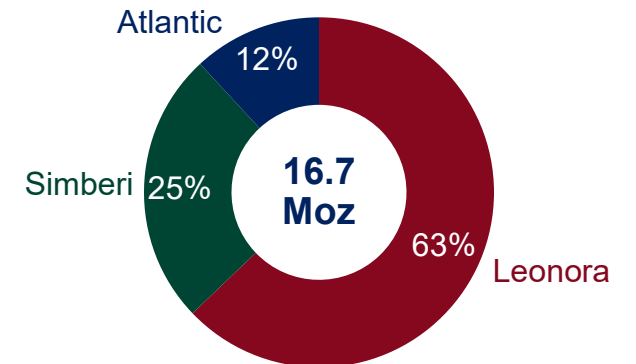
Three operations with pathway to greater than 10 years of operating life



GOLD ORE RESERVES



GOLD MINERAL RESOURCES



# Our sustainability framework underpins our business

## Our values

Our values guide us in our decision-making every day.

**We act with honesty and integrity**

**We treat people with respect**

**We value working together**

**We deliver to promise**

**We strive to do better**

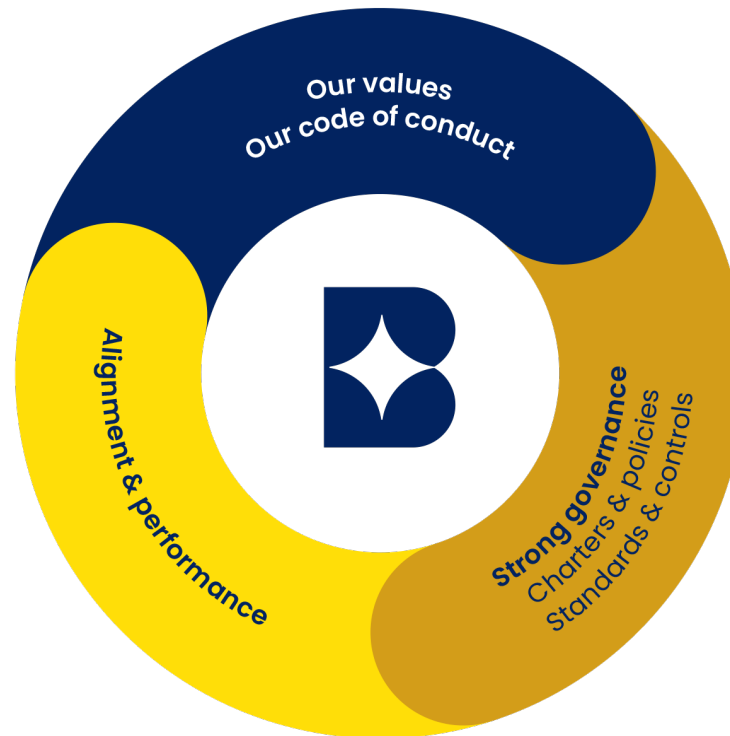
## Our code of conduct

Sets out our purpose and vision, outlines how we work together, and sets expectations for our behaviour.

It explains the importance of our five values and commitments as we operate our business and care for and interact with each other, our suppliers, communities and third parties.

## Alignment & performance

We optimise our alignment and performance to our governance settings, industry standards, and internal commitments, targets and goals. We regularly report our performance to our stakeholders.



## Strong governance

A cascading set of charters, policies, standards, and controls ensures appropriate governance. Endorsed by the Board, these lay out our Group-wide requirements and expectations and explain what we must do in practice. This approach is supported at an operational level with local procedures specific to risks and our business in those areas.





# We are taking action across our sustainability commitments



## Safety Always

Target is **Zero Harm**  
**TRIFR**<sup>1</sup> - 3.4 in FY22

**Embedded CARE behaviours** across all operations

A workplace **safe from injury, harassment, bias, discrimination and harm**

**Gender Safety** audits



## Empowered People Diverse Teams

We are the only mining company to be a **WGEA**<sup>2</sup> **Employer of Choice** (2015-2022)

Included in **Bloomberg Gender Equality Index** (2021 & 2022) - 100% score for sexual harassment policies

Continue to **meet and exceed diversity objectives**



## Stronger Communities

Delivering on action plan to **address risks of Modern Slavery**

Extend '**CARE**' to **community**: mental health, domestic violence, community wellbeing pillars incl. vaccine programs

Supporting **next generation of Indigenous leaders** through consultation and education



## Respecting the Environment

**Carbon neutral by 2050** and by 2025 at **Atlantic Operations**

Reporting on **Scope 3 emissions** and new data on **waste management**

Operations **do not compete with agricultural or domestic needs** for water



## Growing Sustainably

Growing our business sustainably, where it makes sense, and with strong governance practices, means we can add value for everyone: our shareholders, our people and our communities

**MSCI**  
ESG RATINGS



Companies rated A and above represent the top 35% of Precious Metals companies surveyed



**SUSTAINALYTICS**



Ranked 38 of 122 precious metals companies rated



**ACSI**



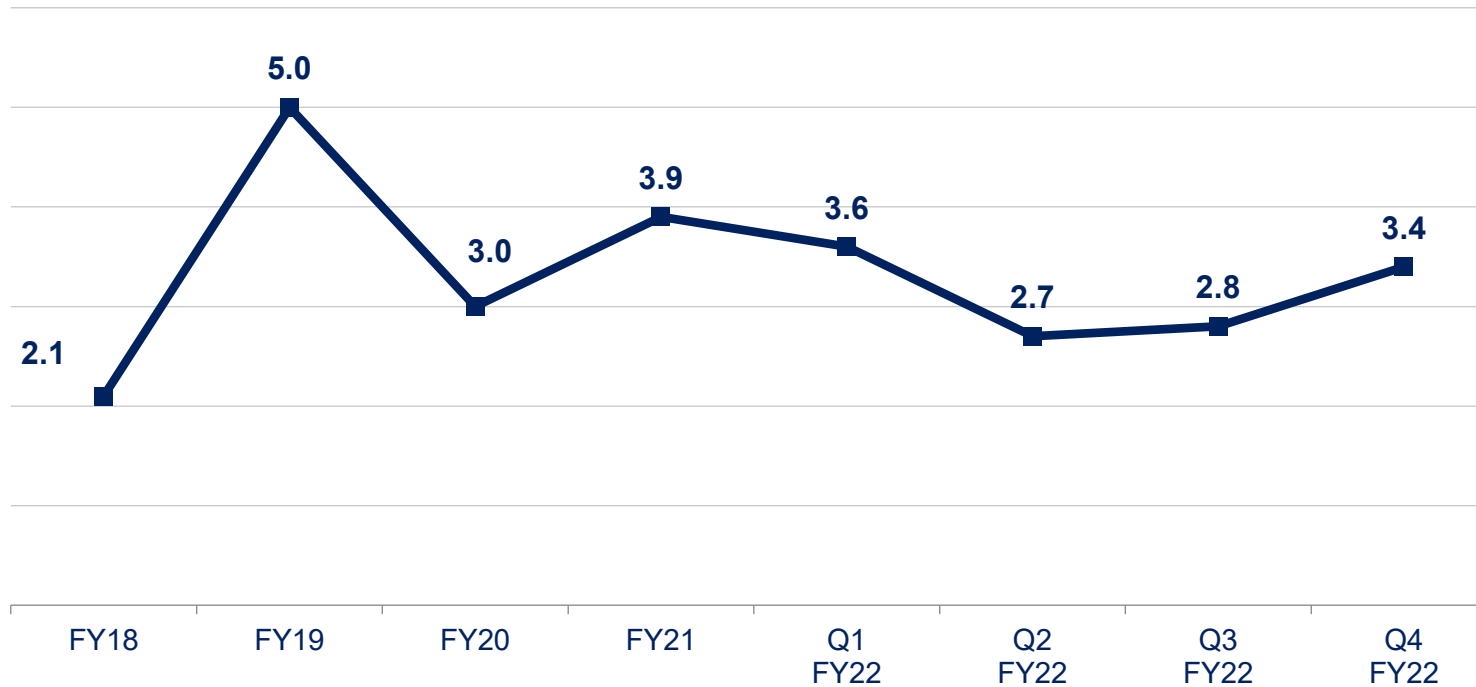
Rated at a leading level of ESG reporting within the Materials-Miners sector

1. Total Recordable Injury Frequency Rate (12 month average, total recordable injuries per million hours worked)  
2. Australian Workplace Gender Equality Agency ([www.wgea.gov.au](http://www.wgea.gov.au))



# Safety always

TOTAL RECORDABLE INJURY FREQUENCY RATE (TRIFR)<sup>1</sup>



## Safety Always

Zero harm is always our target. Zero harm to all people as we responsibly operate our assets to their full potential. This focus on safety guides everything we do.

<sup>1</sup>. Total Recordable Injury Frequency Rate (12 month avg.), total recordable injuries per million hours worked



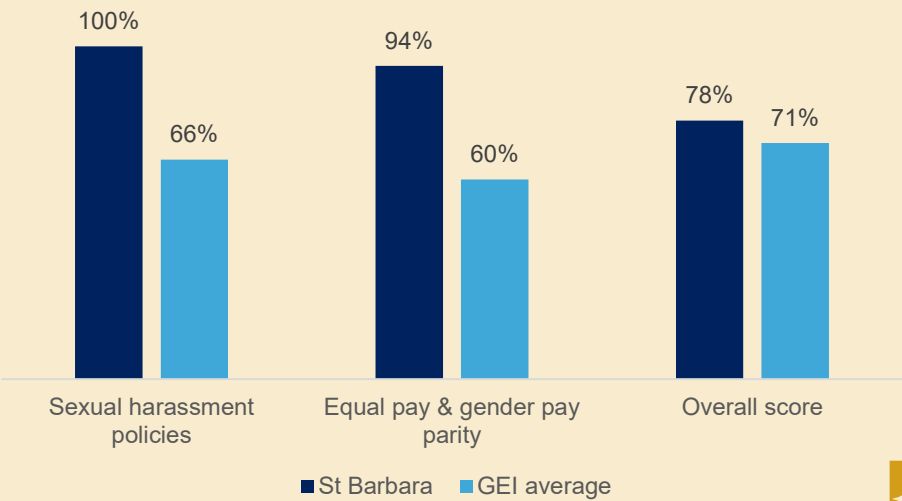
# 2022 Bloomberg Gender Equality Index (GEI) Inclusion



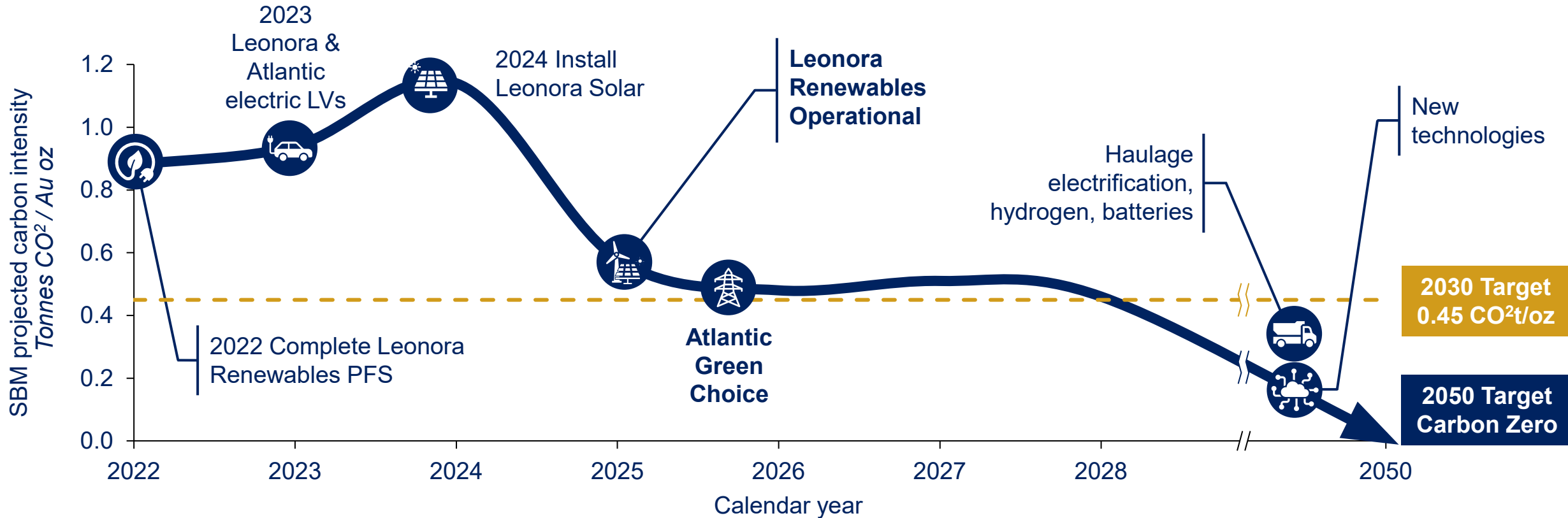
*"Inclusion in the GEI matters to us because it brings transparency to gender-related practices and policies at publicly listed companies thereby increasing the breadth of environmental, social and governance data available to investors. We are proud that this is our second year to be included"*

Craig Jetson

ST BARBARA'S GEI RESULT HIGHLIGHTS



# Sustainability – Plan<sup>1</sup> to reduce carbon intensity



Increasing intensity caused by declining gold grade, deeper mining at Gwalia

Installation of renewable power drives significant decline in carbon intensity

Nova Scotia has indicated their grid will be 80% green by 2025. Our sites will all connect to the grid

HV electrification, battery technology and other new technologies to drive further reductions

1. Plan is based on preliminary studies and is contingent on many factors including gold price, permitting, ability to secure commercial and technical partners, further study outcomes and final investment decisions on individual contingent projects





# St Barbara's three uplifts progressing as planned



## Our capability focus

### Execution discipline

Driving disciplined delivery on commitments across the business, and disciplined control and management of capital

### Short interval control

Closed loop continuous improvement feedback between planning and execution

### People leadership

Ensuring high performing leaders at all levels to drive results for St Barbara

### Asset productivity

Improving our efficiency in utilising and maintaining our equipment

### Technology and innovation

Leveraging digital analytics to drive next horizon of improvements

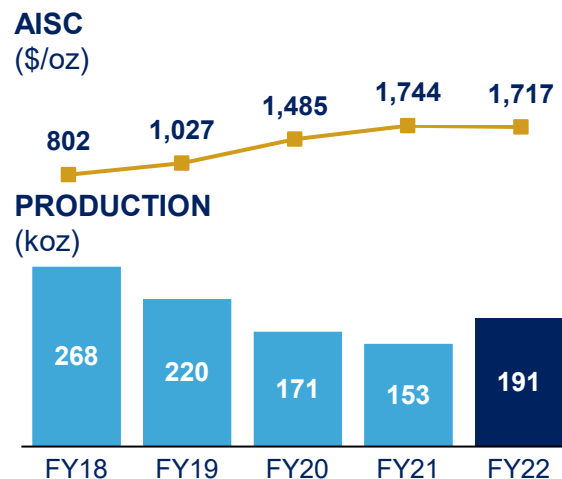
### Continuous improvement capability

Embed our management operating system to drive performance

Our vision is to be a brilliant, global mining company that grows sustainably and creates enduring, positive impacts.



# Leonora Operations



## FY23 Guidance

- Production of between 170 to 185koz
- AISC of \$1,900 to \$2,100/oz
- Sustaining capex of \$65 to \$75M
- Growth capex of \$70 to \$80M

<b>Ore Reserve</b>	2.5Moz
<b>Reserve Grade</b>	4.8g/t
<b>Mineral Resource</b>	10.5Moz
<b>Resource Life<sup>1</sup></b>	87 years
<b># Personnel<sup>2</sup></b>	763

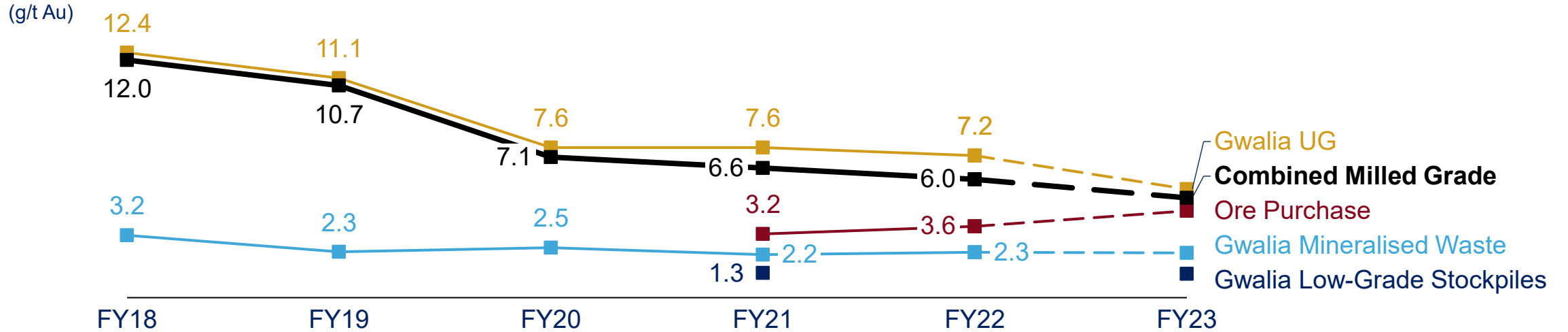
Q4 FY22 Cost Breakdown	A\$ / oz	A\$ / t mined	A\$ / t milled
Mining	913	199.6	
Processing	179		39.8
Site Services	116		
Corporate & Administration	77		
Sustaining Capital	41		
Ore Purchase	101		
Other	427		
<b>All-In Sustaining Cost</b>	<b>1,854</b>		

1. Resource life is indicative and calculated as Measured, Indicated and Inferred Gold Resource (ore tonnes) as at 31 December 2021 divided by mill throughput capacity (1.4Mtpa). The resource life calculation does not take into account future gold production rates and therefore does not equate to operating mine life.
2. 165 employees and 598 contractors as at 30 June 2022

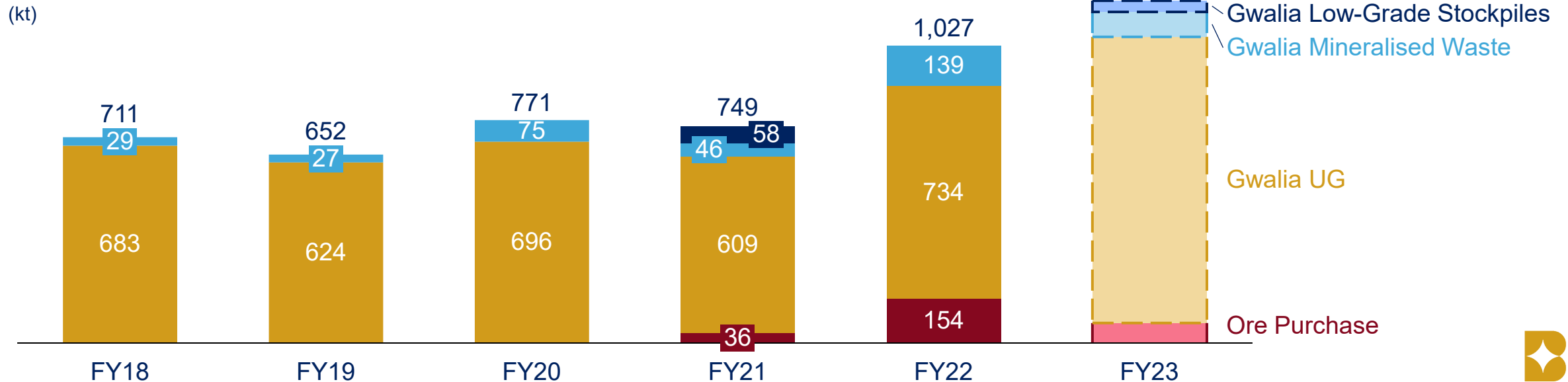


# Managing grade decline through improved productivity

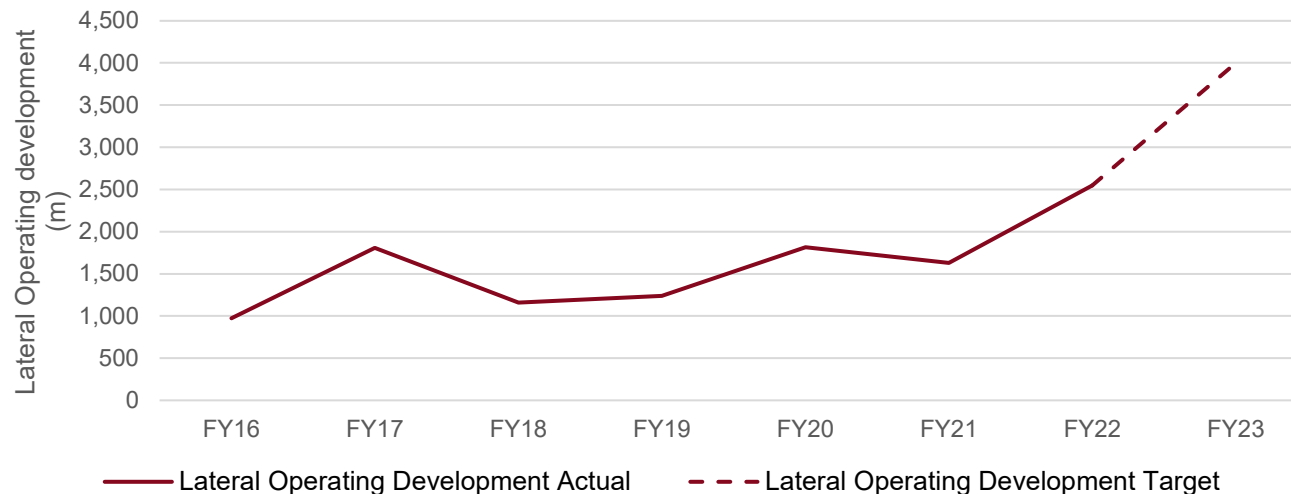
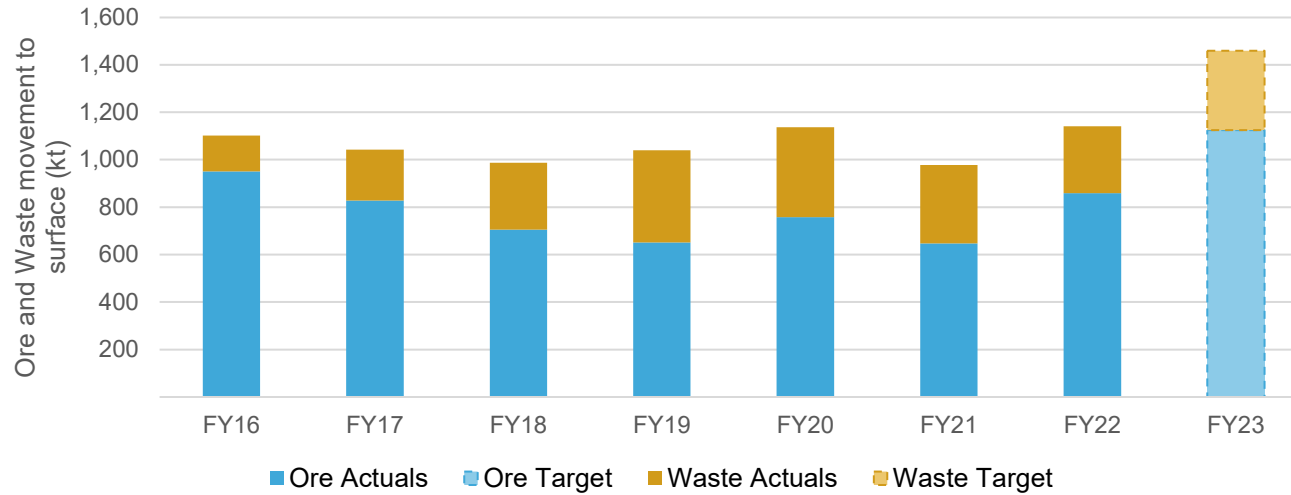
## GRADE MILLED IN GRADUAL DECLINE



## OPERATING STRATEGY INCREASES TONNES MILLED



# Turning around operational performance at Gwalia



- FY16 to FY20 – Declining performance
  - Fewer tonnes moved to surface
  - Limited development metres
  - Waste material stored underground
- FY21 to FY22 – Turnaround
  - Moving historical waste material to surface
  - Increase in development metres
- FY21 – Impacted by Fall of Ground Event
  - Cleared remaining waste stored underground
- FY22 – Increased ore delivery to surface to 859kt
  - Haul fleet focused on ore delivery
  - Additional jumbos added to fleet to further increase development metres
- FY23 – Increase ore delivery to surface to 1.1Mt



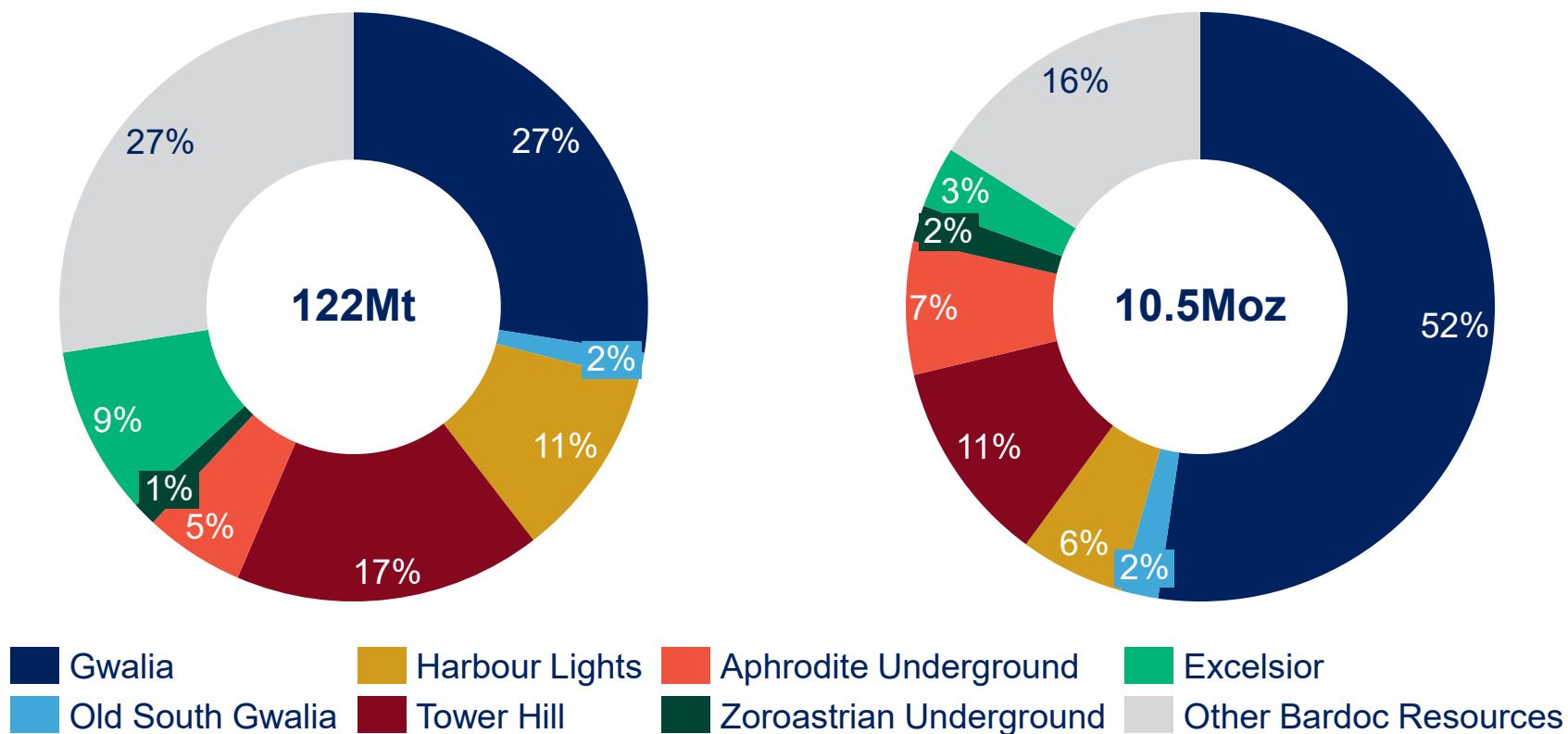
- 
- Eastern Goldfields Prospectivity**
- Legend:**
- SBM Project Area (Blue outline)
  - SBM Operation (Yellow circle with a cross)
  - SBM Resource (Yellow circle with a star)
  - Non-SBM Operation with Gold Production (Red circle with a cross)
  - Non-SBM Project (Yellow circle)
- Key Projects and Locations:**
- Agnew:** 4Mtpa (Goldfields)
  - Thunderbox:** 5Mtpa (Northern Star)
  - Gwalia:** 1.4Mtpa
  - King of the Hills:** 4.7Mtpa (Red 5)
  - Rosemont:** 2Mtpa (Regis)
  - Garden Well:** 5Mtpa (Regis)
  - Mt Morgans:** 3Mtpa (Dacian)
  - Granny Smith:** 3Mtpa (Goldfields)
  - Sunrise Dam:** 4Mtpa (AngloGold/Ashanti)
  - Fortitude:** Red October
  - Second Fortune:**
  - Menzies Gold Project:**
  - Carosue Dam:** 3Mtpa (Northern Star)
  - Paddington:** 4Mtpa (Norton)
- Other Locations:** Bellevue, Leinster, Lawlers, Great Western, Redcliffe, HUB, Mertondale, Cardinia, Raeside, Malcolm, Yundamindera, Eucalyptus, Apollo Hill, Ulysses, Kookynie, Niagara, Bottle Creek-Mt Ida, Menzies, Riverina, Mulline, Lily-Albany, Aphrodite, Zoroastrian, Bardoc Region, PINJIN JV, Kalgoorlie.
- Scale:** 25km, 100km, 300 000mE, 400 000mE, 6 900 000mN, 6 700 000mN.
- Inset Map:** Western Australia, Location, Perth, S.A., W.A.
- Map Labels:** LEONORA REGION, MULWARRIE, BARDOC REGION, PINJIN JV.
- Source:** LeoRgn-042 Drawn July 2002





# St Barbara's Leonora Province has a productive mill, region leading resource base and a long mine life

## Mineral Resources in the Leonora Province



# Old South Gwalia adds 218koz of resource

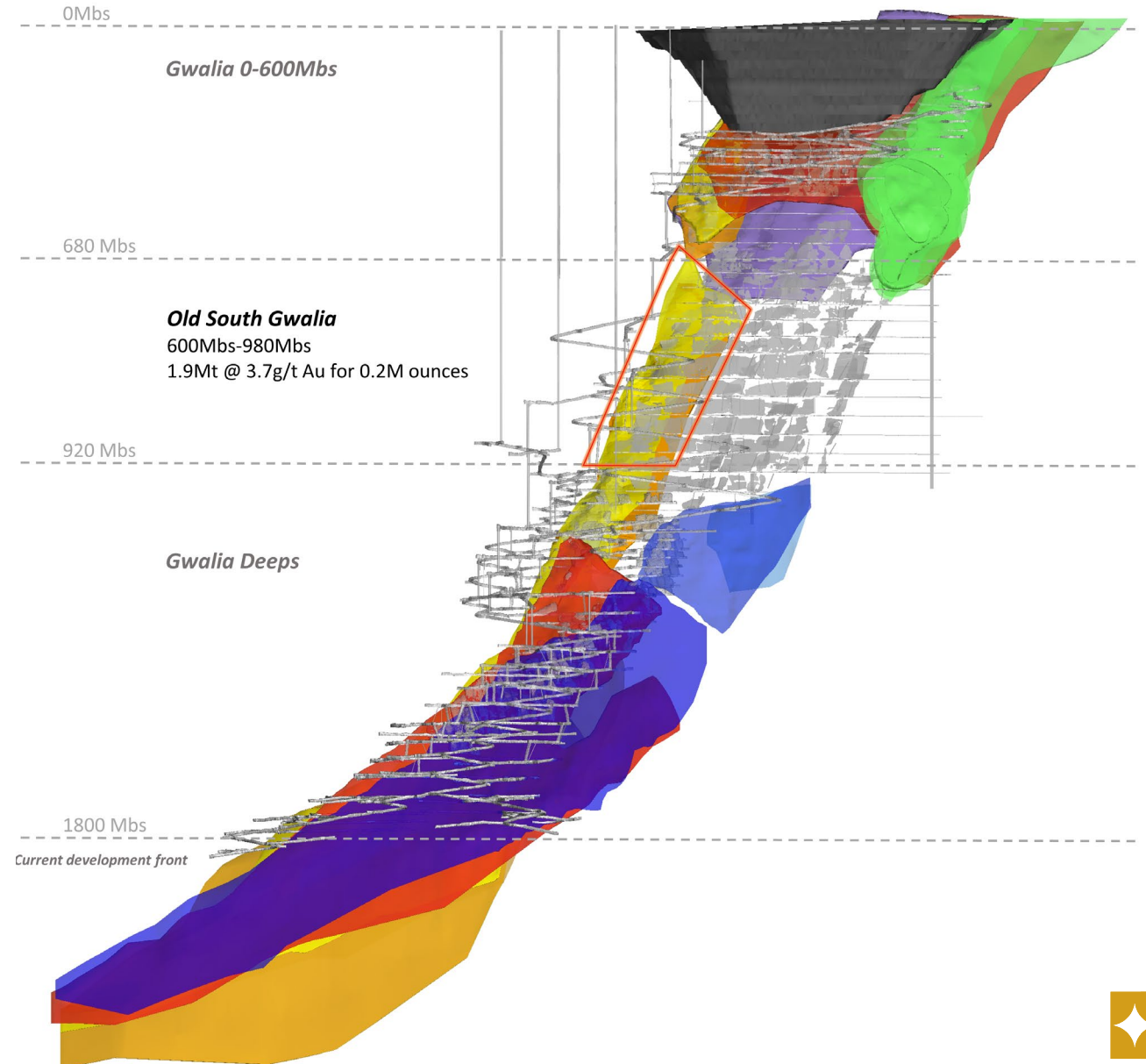
## Old South Gwalia Mineral Resource

**1.9mt @ 3.7g/t**

**Old South Gwalia has the potential to become a new, shallower mining front at Gwalia**

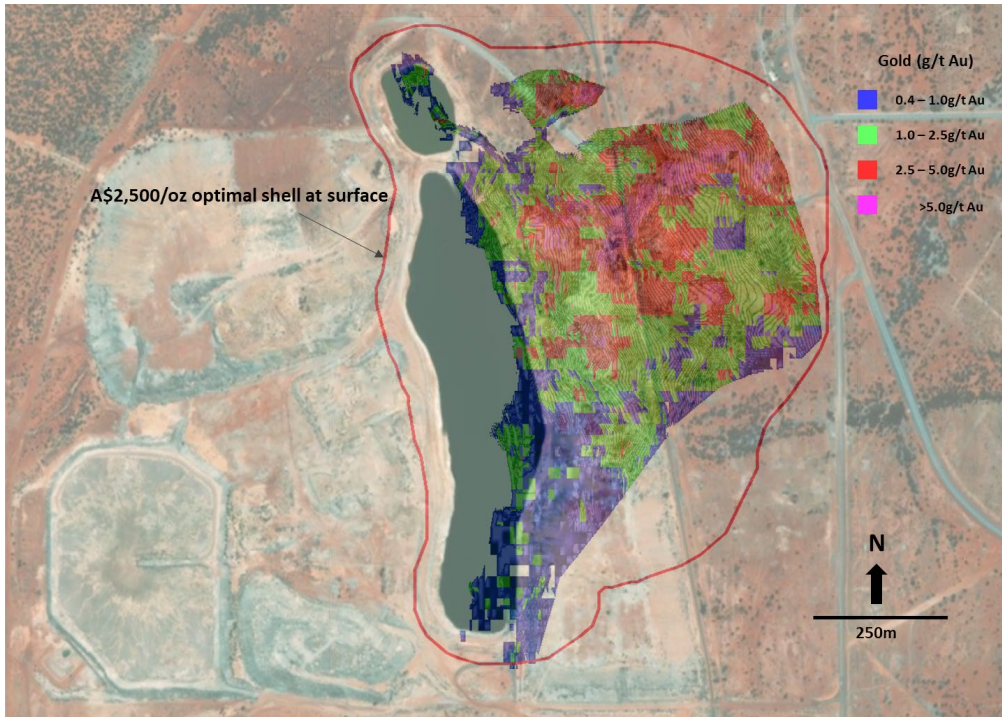
## Further near term Ore Reserve and Mineral Resource growth to come

- Updated resource estimate in progress for area above Old South Gwalia (between 600mbs and surface)
- Inaugural Tower Hill Open Pit Ore Reserve targeted for September quarter FY23
- Inaugural Harbour Lights Open Pit Ore Reserve targeted for March quarter FY23

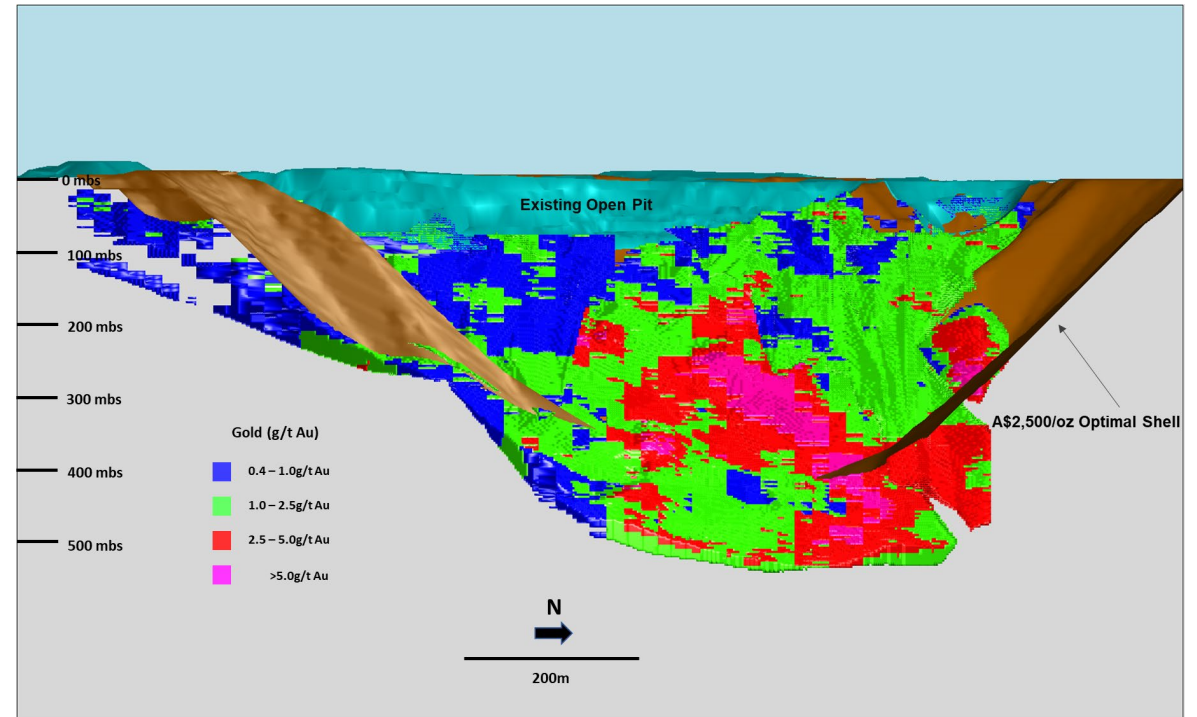


# Tower Hill grows Mineral Resource by 600koz

Plan view of Tower Hill deposit



Long section view of Tower Hill deposit

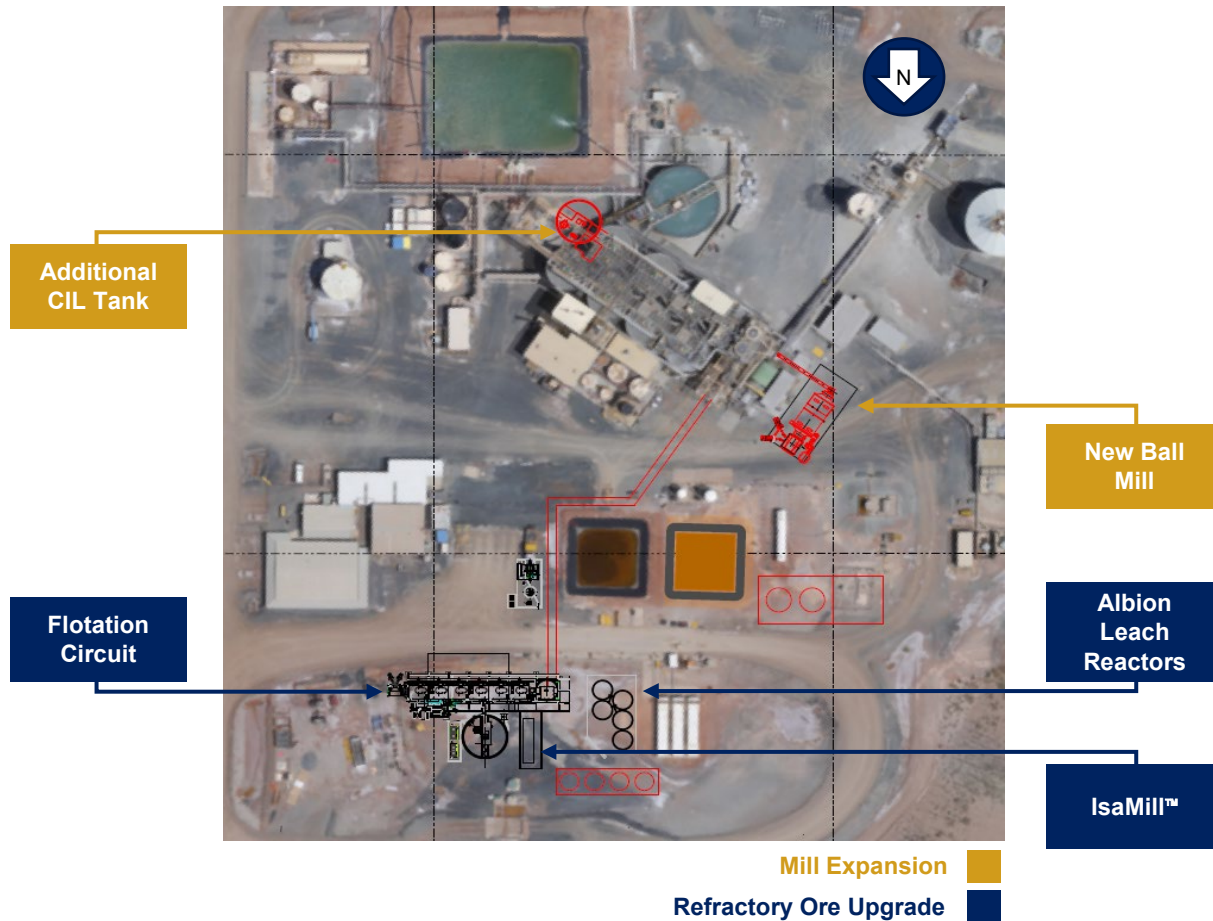


Change in Indicated and Inferred Mineral Resource	Million Tonnes	Grade (g/t)	Million Ounces
Previous Tower Hill Underground (as at 30 June 2021)	5.1	3.8	0.6
Current Tower Hill Open Pit	20.7	1.8	1.2
<b>Variance</b>	<b>15.6</b>	<b>1.2</b>	<b>0.6</b>

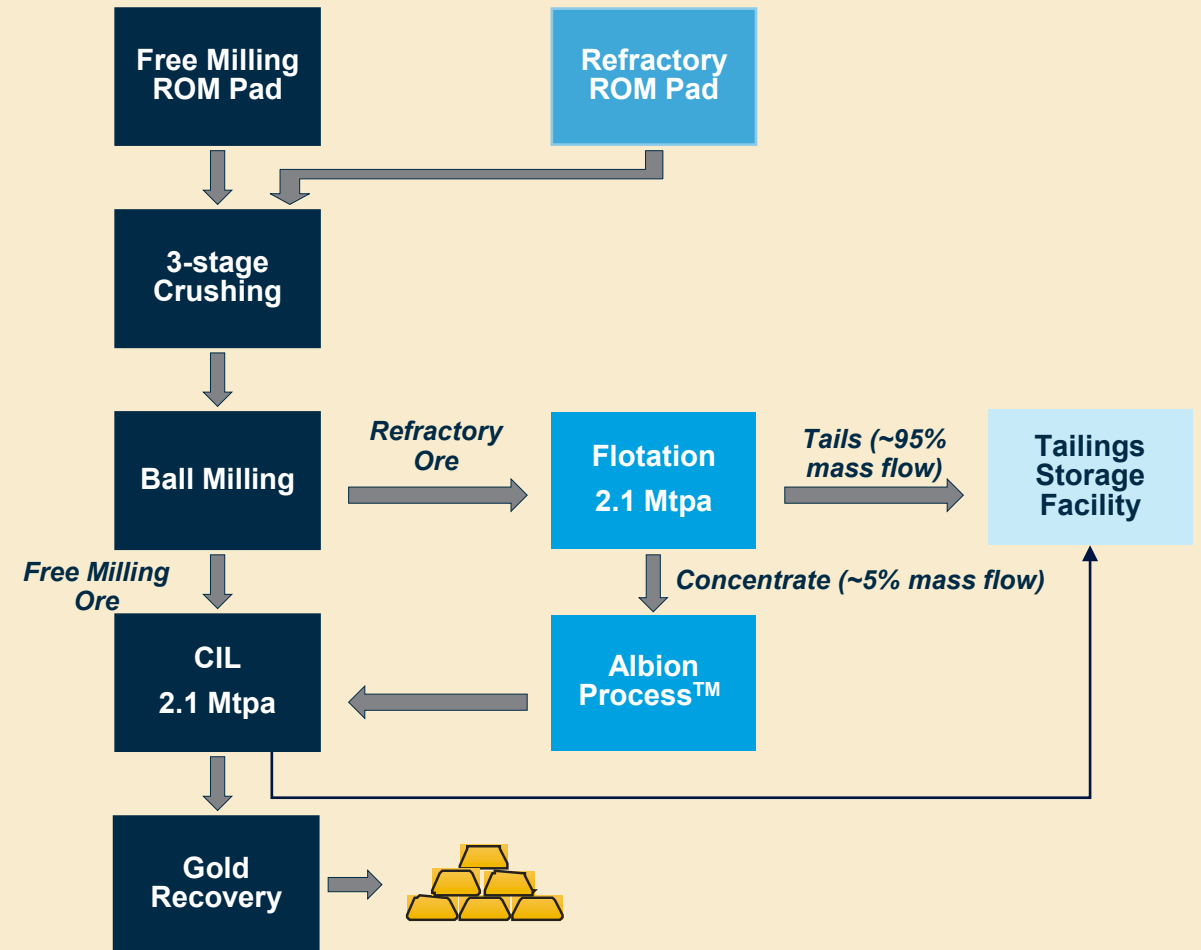


# Creating a unique processing hub

Increasing processing capacity to 2.1Mtpa and adding refractory capability



Leonora processing plant layout



Process flow diagram

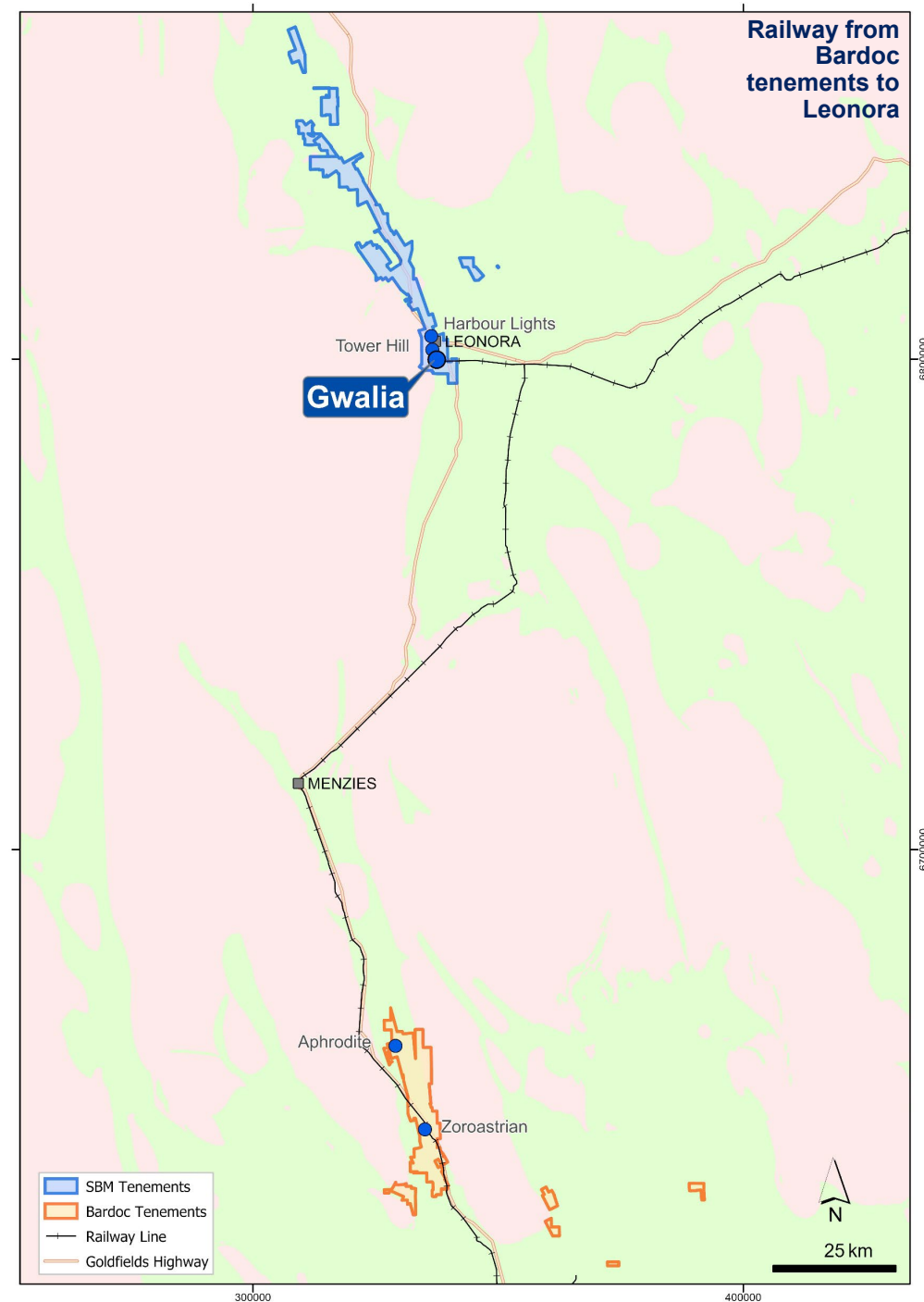
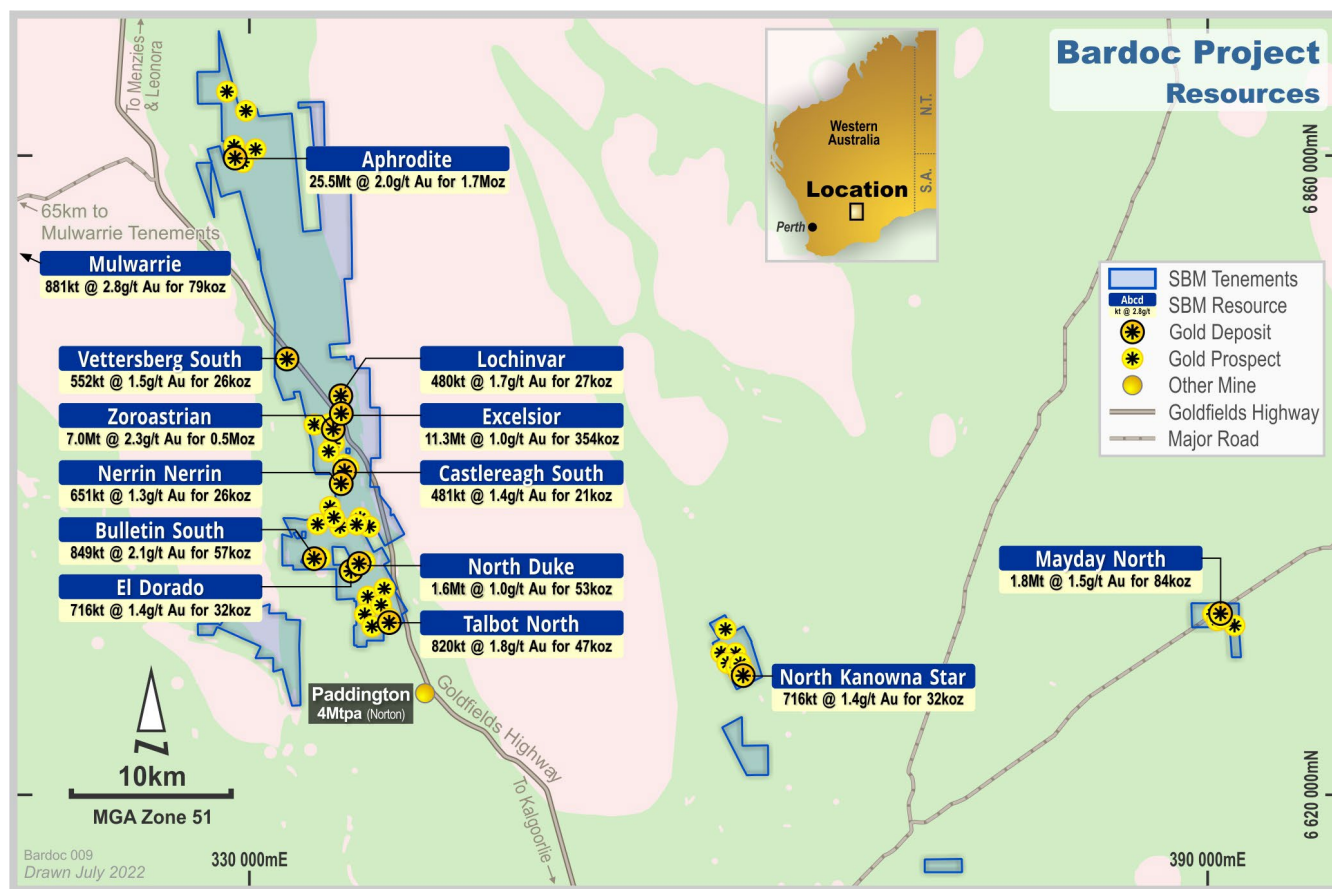




# Acquisition of Bardoc Gold complete

## Bardoc tenement overview

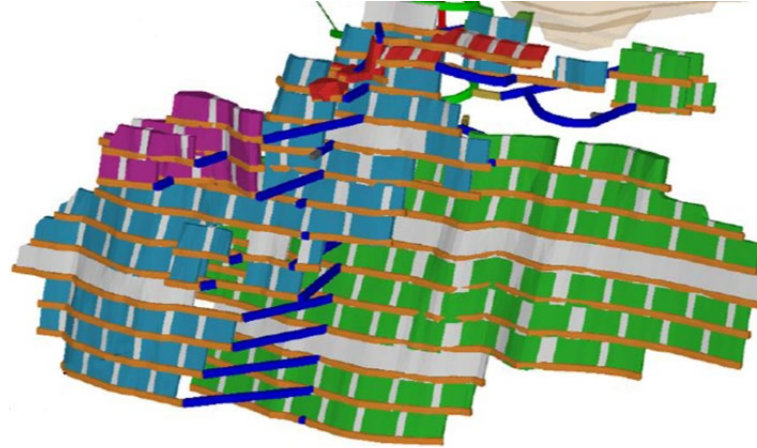
- 3.0Moz Mineral Resources & 0.4Moz Ore Reserves
- Large contiguous tenement package located ~180km south of Leonora by rail
- Aphrodite and Zoroastrian higher grade deposits ready for development
- Synergies to be achieved by delivering Bardoc ore to the Leonora process plant via adjacent rail line



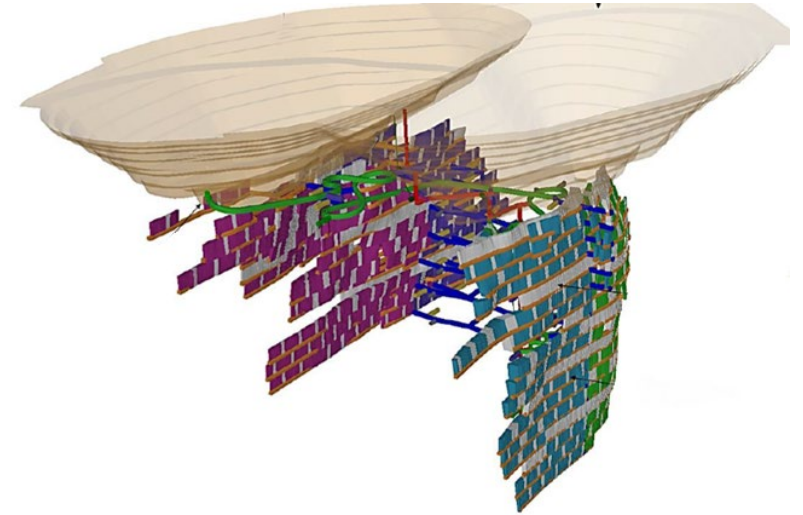


# Two new underground mines ready to be developed

**Zoroastrian underground mine**



**Aphrodite underground mine**

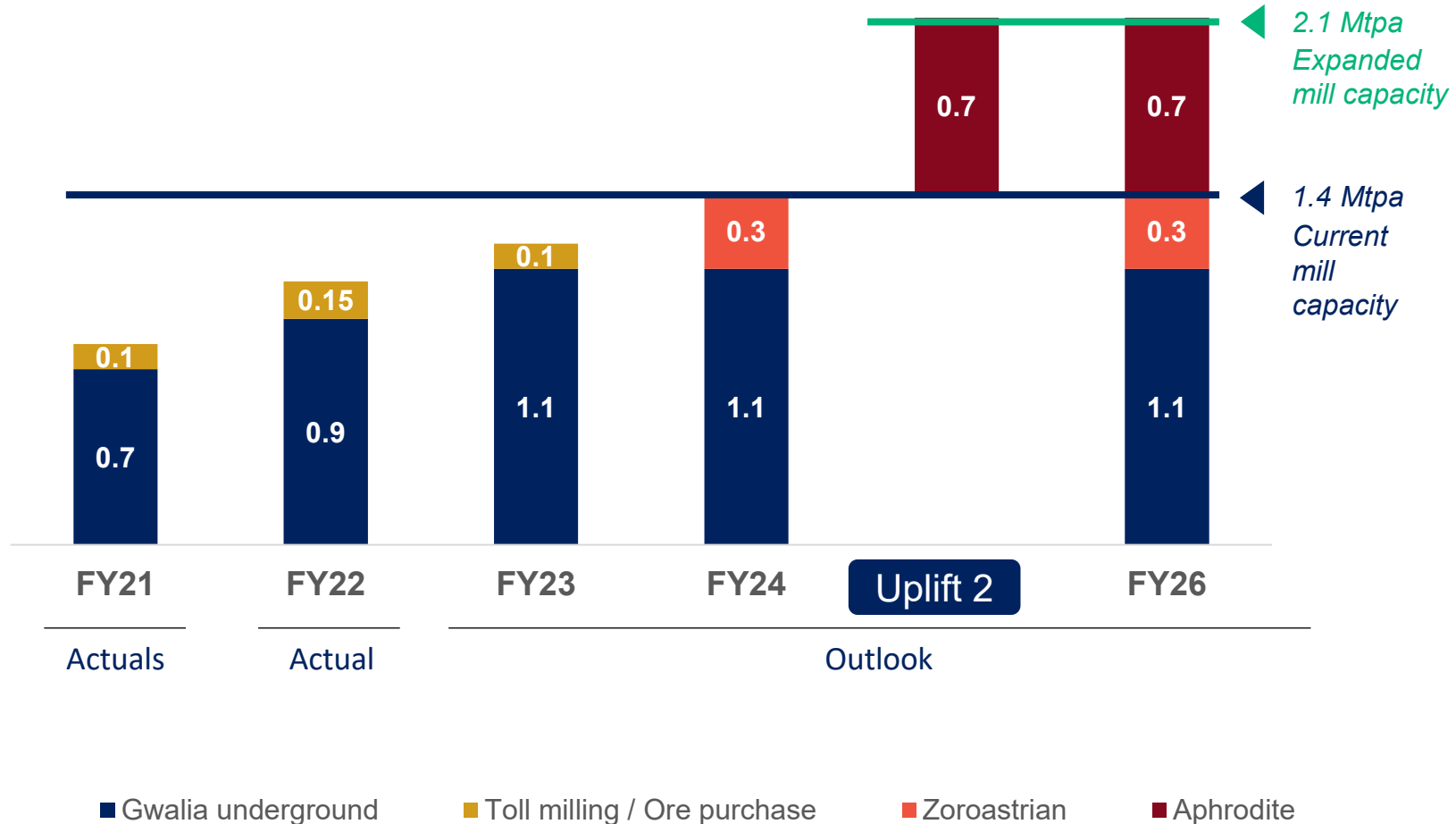


Total Mineral Resources	1.6Mt @ 4.0 g/t Au	6.7Mt @ 3.6 g/t Au
Capital cost to develop <sup>1</sup>	Estimated A\$15M	Estimated A\$30M
Ore type	Free-mill	Refractory
Mining method	Longhole open stoping	Longhole open stoping
Targeted construction commencement	Q3 FY23	Q1 FY24
Targeted first production	Q1 FY24	H1 FY25
Permitting	Mining Proposal and Closure Plan Approved	Mining Proposal and Closure Plan Submitted

<sup>1</sup>. Preliminary estimate only, to be the subject of detailed analysis as part of proposed Leonora Province Plan Pre-Feasibility study



# Zoroastrian and Aphrodite to fill the mill



*The rapid integration of the Bardoc assets into the Leonora portfolio is on track to be delivered earlier than first planned and will assist in closing the feed gap in filling the Leonora mill.*



# Filling the Leonora processing plant

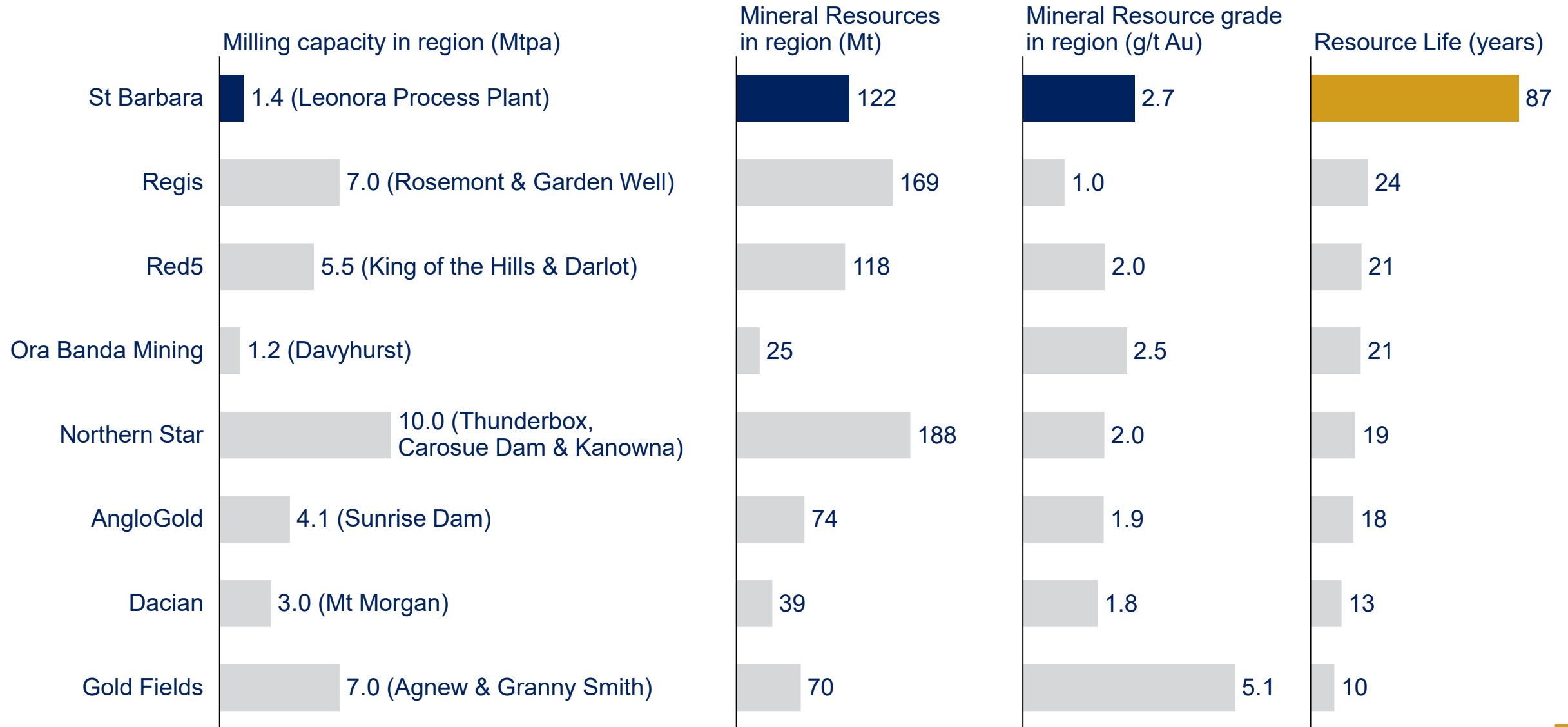
Mine	Ore mining rate being evaluated	Mineral Resources		
		Tonnes (Mt)	Grade (g/t Au)	Moz Au
Gwalia Underground inc Old South Gwalia	1.1	27.1	5.7	5.0
Zoroastrian Underground	0.3 - 0.5 <sup>1</sup>	1.6	4.0	0.2
Aphrodite Underground <sup>2</sup>	0.9 - 1.0 <sup>1</sup>	6.7	3.6	0.8
Harbour Lights <sup>2</sup>	1.1 – 2.1	12.9	1.5	0.6
Tower Hill Open Pit	1.1 – 2.9	20.7	1.8	1.2

1. Indicative rates, to be the subject of detailed analysis as part of the proposed Leonora Province Plan Pre-Feasibility Study
2. Refractory ore





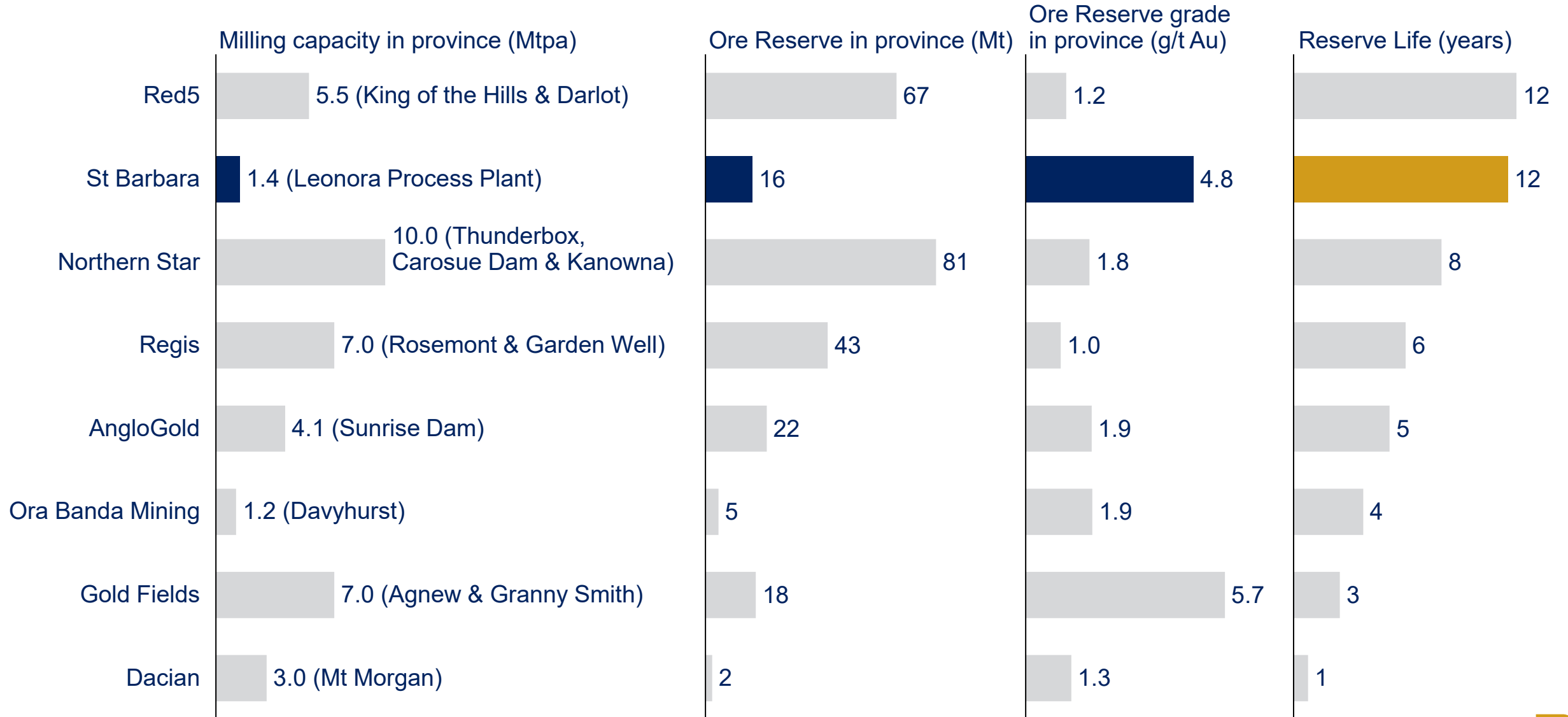
# Significant Mineral Resource life underpins organic growth options



Gold Mineral Resources retrieved from the latest company filings (on 25 August 2022)  
 Resource life calculated by dividing Mineral Resources in region by milling capacity  
 Considers operating mills only



# High grade Ore Reserves with long life

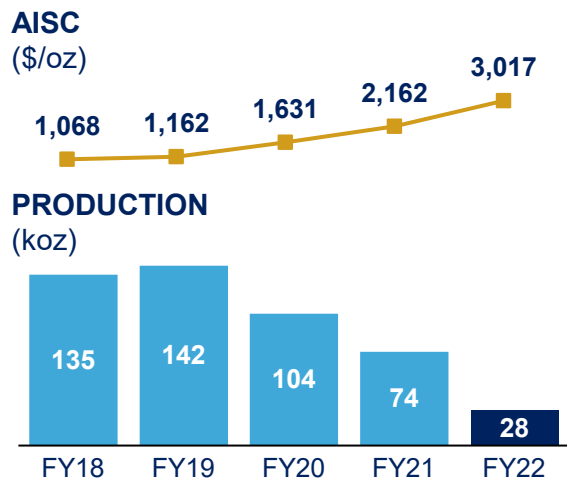


Gold Ore Reserves retrieved from the latest company filings (on 25 August 2022)  
Reserve life calculated by dividing Ore Reserves in province by milling capacity





# Simberi Operations



## FY23 Guidance

- Production of between 70 to 80koz
- AISC of \$2,200 to \$2,400/oz<sup>1</sup>
- Sustaining capex of \$5 to \$10M
- Growth capex of \$5 to \$10M

<b>Ore Reserve</b>	2.1Moz
<b>Reserve Grade</b>	1.8g/t
<b>Mineral Resource</b>	4.2Moz
<b>Resource Life<sup>2</sup></b>	26 years
<b># Employees<sup>3</sup></b>	742

Q4 FY22 Cost Breakdown	A\$ / oz	A\$ / t mined	A\$ / t milled
Mining	1,231	8.6	
Processing	717		17.7
Site Services	589		
Corporate & Administration	76		
Sustaining Capital	33		
Other	(230)		
<b>All-In Sustaining Cost</b>	<b>2,416</b>		

1. US\$1,496 to US\$1,632 per ounce at AUD/USD of 0.68
2. Resource life is indicative and calculated as Measured, Indicated and Inferred Gold Resource (ore tonnes) as at 31 December 2021 divided by mill throughput capacity (3.5Mtpa). The resource life calculation does not take into account future gold production rates and therefore does not equate to operating mine life.
3. As at 30 June 2022





## Simberi under strategic review



Sulphide Project remains attractive:

- Enables >10 years of life
- Efficiently processes 29.3Mt of Sulphide Ore Resources and 11.6Mt of Oxide Ore Resources



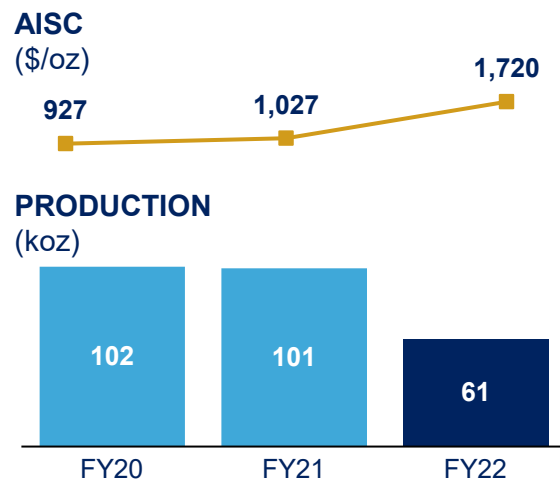
Strategic review announced:

- A number of parties have expressed interest in acquiring assets
- Proceeds from potential sale to go towards other high returning organic growth opportunities





# Atlantic Operations



## FY23 Guidance

- Production of between 40 to 50koz
- AISC of \$1,950 to \$2,250/oz<sup>1</sup>
- Sustaining capex of \$5 to \$10M
- Growth capex of \$20 to \$30M

<b>Ore Reserve</b>	1.6Moz
<b>Reserve Grade</b>	1.0g/t
<b>Mineral Resource</b>	2.0Moz
<b>Resource Life<sup>2</sup></b>	29 years
<b># Employees<sup>3</sup></b>	322

Q4 FY22 Cost Breakdown	A\$ / oz	A\$ / t mined	A\$ / t milled
Mining	953	6.1	
Processing	515		12.5
Site Services	298		
Corporate & Administration	71		
Sustaining Capital	179		
Other	11		
<b>All-In Sustaining Cost</b>	<b>2,027</b>		

1. C\$1,745 to C\$2,014 per ounce at AUD/CAD of 0.895
2. Resource life is indicative and calculated as Measured, Indicated and Inferred Gold Resource (ore tonnes) as at 31 December 2021 divided by mill throughput capacity (2.0Mtpa). The resource life calculation does not take into account future gold production rates and therefore does not equate to operating mine life.
3. As at 30 June 2022



# Generating operating cash flow

## FY22 Financial Results

Underlying EBITDA<sup>1</sup>  
(A\$M)

197

Underlying NPAT<sup>1</sup>  
(A\$M)

24

Cash flow from  
operating activities  
(A\$M)

88

Underlying  
EBITDA Margin<sup>1</sup>  
(%)

29

EPS  
(Underlying, A\$ cents )

3

Gearing ratio  
(Debt/Equity)<sup>2</sup>

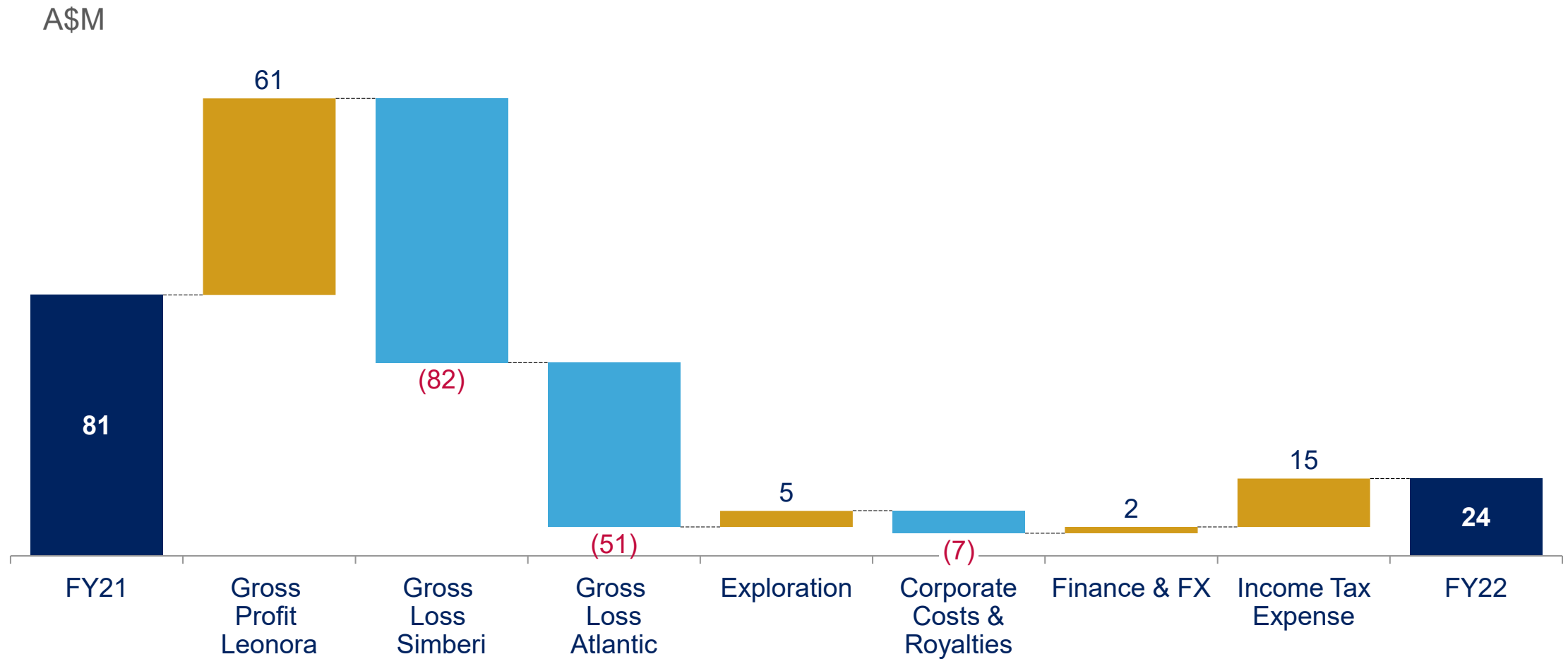
15%

1. Non-IFRS financial measures, the details of these are set out in slide 37. Excludes significant items.

2. Debt excludes right-of-use asset lease liabilities

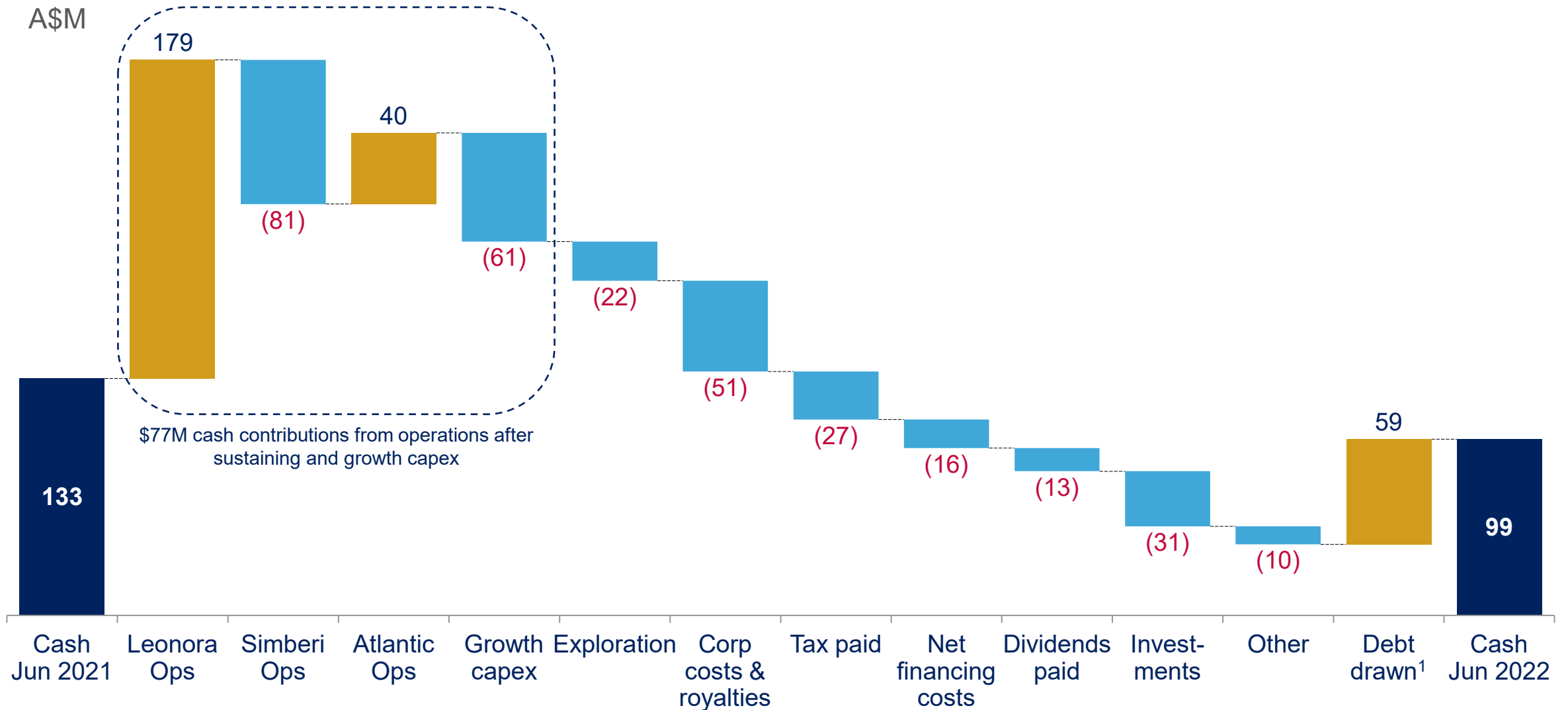


## Movement in underlying NPAT





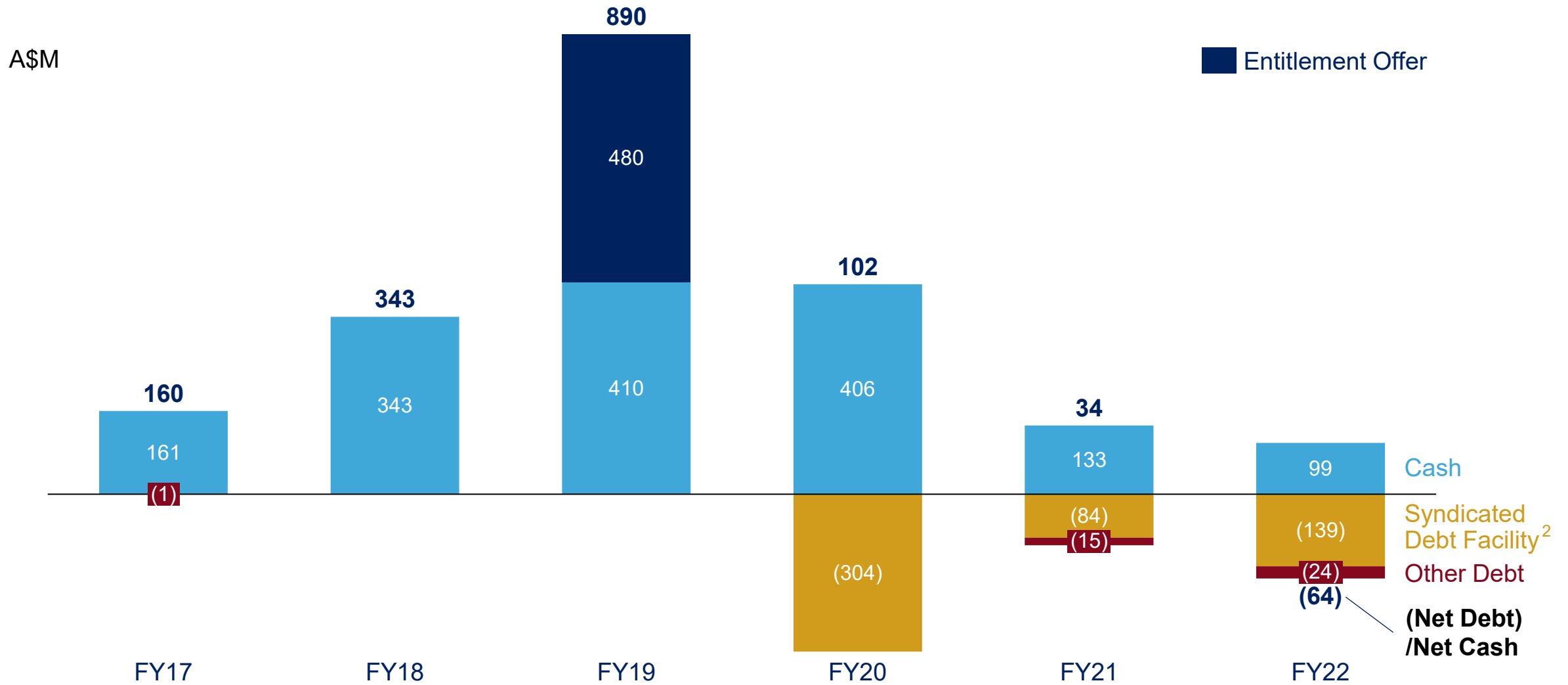
# Strong cashflow generated from two operations



1. Debt includes syndicated debt and finance lease facilities



# Balance sheet<sup>1</sup>



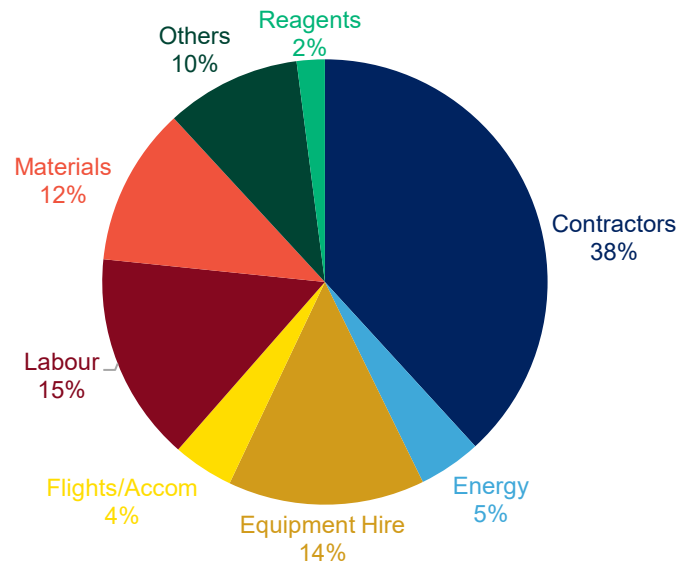
1. Debt excludes right-of-use assets lease liabilities

2. Net of capitalised borrowing costs

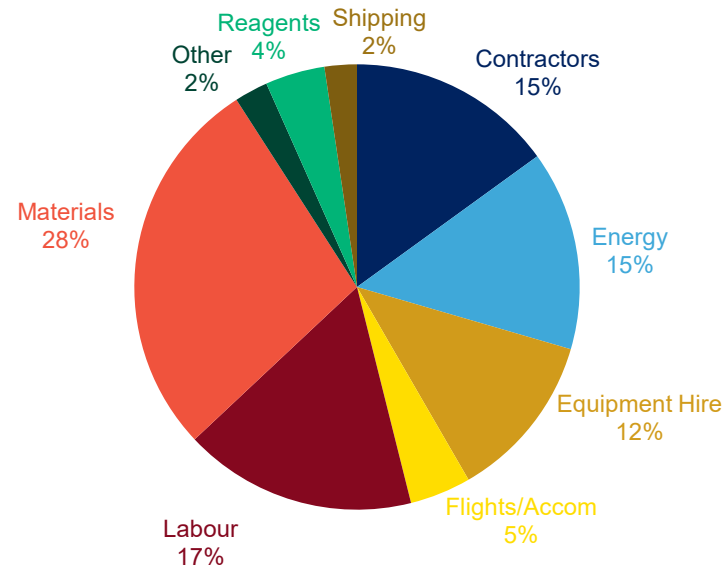


# Indicative operating cost breakdown by site

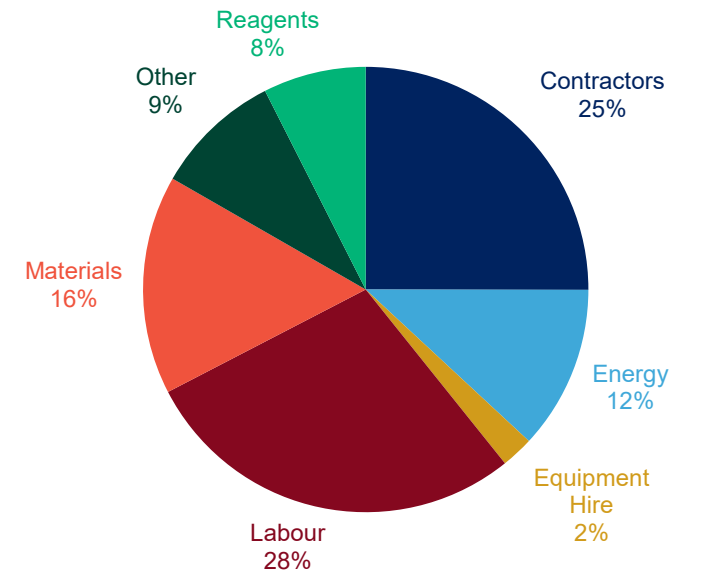
## Leonora



## Simberi



## Atlantic



# Consolidated production, costs and guidance summary

Production Summary Consolidated		Q4 Jun FY21	Year FY21	Q1 Sep FY22	Q2 Dec FY22	Q3 Mar FY22	Q4 Jun FY22	Year FY22	Guidance FY22	Guidance FY23
<i>St Barbara's financial year is 1 July to 30 June</i>		<i>Qtr to 30 Jun 2021</i>	<i>Year to 30 June 2021</i>	<i>Qtr to 30 Sep 2021</i>	<i>Qtr to 31 Dec 2021</i>	<i>Qtr to 31 March 2022</i>	<i>Qtr to 30 June 2022</i>	<i>Year to 30 June 2022</i>	<i>Year to 30 June 2022</i>	<i>Year to 30 June 2023</i>
<b>Production</b>										
Atlantic	oz	26,718	101,243	15,243	16,887	11,006	18,015	61,151	55 to 65koz	40 to 50koz
Leonora	oz	45,157	152,696	51,757	48,637	40,559	50,506	191,459	180 to 200koz	170 to 185koz
Simberi	oz	10,824	73,723	-	-	10,254	17,882	28,136	25 to 30koz	70 to 80koz
<b>Consolidated</b>	<b>oz</b>	<b>82,698</b>	<b>327,662</b>	<b>67,000</b>	<b>65,524</b>	<b>61,819</b>	<b>86,403</b>	<b>280,746</b>	<b>275 to 290koz</b>	<b>280 to 315koz</b>
<b>Mined Grade</b>										
Atlantic	g/t	0.91	0.88	0.63	0.76	0.52	0.70	0.66	n/a	n/a
Leonora	g/t	6.5	7.6	8.6	6.8	6.1	7.83	7.30	n/a	n/a
Simberi	g/t	1.47	1.35	1.41	1.29	1.21	1.07	1.14	n/a	n/a
<b>Total Cash Operating Costs</b>										
Atlantic	A\$/oz	769	761	1,188	1,234	1,799	1,751	1,476	n/a	n/a
Leonora	A\$/oz	1,274	1,185	1,033	1,164	1,341	1,323	1,206	n/a	n/a
Simberi	A\$/oz	2,835	1,912	-	-	3,829	2,276	2,841	n/a	n/a
<b>Consolidated</b>	<b>A\$/oz</b>	<b>1,314</b>	<b>1,218</b>	<b>1,071</b>	<b>1,184</b>	<b>1,861</b>	<b>1,632</b>	<b>1,444</b>	<b>n/a</b>	<b>n/a</b>
<b>All-In Sustaining Cost</b>										
Atlantic	A\$/oz	1,011	1,027	1,504	1,396	2,013	2,027	1,720	1,650 to 1,850 <sup>1</sup>	1,950 to 2,250 <sup>3</sup>
Leonora	A\$/oz	1,663	1,744	1,488	1,653	1,916	1,854	1,717	1,605 to 1,720	1,900 to 2,100
Simberi	A\$/oz	2,964	2,162	-	-	4,064	2,416	3,017	3,200 to 3,600 <sup>2</sup>	2,200 to 2,400 <sup>4</sup>
<b>Consolidated</b>	<b>A\$/oz</b>	<b>1,623</b>	<b>1,616</b>	<b>1,492</b>	<b>1,587</b>	<b>2,290</b>	<b>2,007</b>	<b>1,848</b>	<b>1,750 to 1,870</b>	<b>2,050 to 2,150</b>

1. C\$1,500 to C\$1,685 per ounce at AUD/CAD of 0.91

2. US\$2,400 to US\$2,700 per ounce at AUD/USD of 0.75

3. C\$1,745 to C\$2,014 per ounce at AUD/CAD of 0.895

4. US\$1,496 to US\$1,632 per ounce at AUD/USD of 0.68





## Hedging summary as at 31 August 2022

Financial Year	Volume Ounces	Price \$/oz	Type	Delivery	Delivery schedule
Sept 22 to Dec 22	17,866	C\$2,050	European call options	Apr 2022 to Dec 2022	Monthly



# Ore Reserves Summary at 31 December 2021

Region	Project	Proved			Probable			Total		
		Tonnes ('000)	Gold (g/t)	Ounces ('000)	Tonnes ('000)	Gold (g/t)	Ounces ('000)	Tonnes ('000)	Gold (g/t)	Ounces ('000)
Australia	Gwalia, (WA)	1,543	7.3	361	11,318	4.8	1,761	12,862	5.1	2,121
	Aphrodite, (WA)				2,782	3.6	322	2,782	3.6	322
	Zoroastrian, (WA)				795	3.8	97	795	3.8	97
PNG	Simberi Oxide, (PNG)	2,718	1.2	108	6,244	1.1	222	8,962	1.1	330
	Simberi Sulphide, (PNG)	2,530	1.8	143	24,808	2.0	1,582	27,338	2.0	1,726
	Simberi Stockpiles, (PNG)	-	-	-	403	1.9	25	403	1.9	25
Canada	Atlantic Mining, (NS)	21,680	1.1	782	20,501	1.1	711	42,182	1.1	1,493
	Atlantic Mining Stockpiles, (NS)	6,040	0.5	90	-	-	-	6,040	0.5	90
<b>Total All Projects</b>		<b>34,511</b>	<b>1.3</b>	<b>1,484</b>	<b>66,852</b>	<b>2.2</b>	<b>4,720</b>	<b>101,365</b>	<b>1.9</b>	<b>6,203</b>

## Notes

- Ore Reserves are based on a gold price of: Gwalia, Aphrodite and Zoroastrian (A\$2,000/oz), Simberi (US\$1,500/oz) and Atlantic Mining (C\$1,948/oz for Touquoy & Beaver Dam and C\$1,688/oz for Fifteen Mile Stream and Cochrane Hill)
- Cut-off Grades Gwalia (4.0 g/t Au), Aphrodite (1.9g/t), Zoroastrian (2.0g/t), Simberi Oxide (0.4 g/t Au), Atlantic Mining (0.3 g/t Au – 0.4 g/t Au)
- Mineral Resources are reported inclusive of Ore Reserves
- Data is rounded to thousands of tonnes and thousands of ounces. Discrepancies in totals may occur due to rounding

Gwalia, PNG and Canada reported as at 31 December 2021 refer ASX:SBM 'Ore Reserves and Mineral Resources Statements 31 December 2021' 18 February 2022. Aphrodite and Zoroastrian reported as at 31 December 2021 refer ASX:SBM 'Q3 March FY22 Quarterly Report' 28 April 2022.



# Mineral Resources Summary

Region	Project	Measured			Indicated			Inferred			Total		
		Tonnes ('000)	Gold (g/t)	Ounces ('000)	Tonnes ('000)	Gold (g/t)	Ounces ('000)	Tonnes ('000)	Gold (g/t)	Ounces ('000)	Tonnes ('000)	Gold (g/t)	Ounces ('000)
Leonora, WA	Gwalia Deeps	3,776	5.8	704	18,946	5.7	3,492	2,485	6.8	540	25,206	5.8	4,736
	Gwalia Open Pit	2,221	2.3	164	6,218	2.9	600	-	-	-	8,439	2.8	764
	Old South Gwalia	27	4.4	4	1,223	3.6	142	607	3.7	72	1,857	3.7	218
	Harbour Lights	-	-	-	12,268	1.4	569	616	1.7	33	12,884	1.5	602
	Tower Hill	-	-	-	20,682	1.8	1,177	-	-	-	20,682	1.8	1,177
Bardoc, WA	Aphrodite Open Pit	-	-	-	13,458	1.5	666	5,321	1.3	229	18,780	1.5	895
	Aphrodite Underground	-	-	-	4,156	3.7	497	2,571	3.3	271	6,726	3.6	768
	Zoroastrian Open Pit	-	-	-	3,702	1.9	228	1,730	1.6	87	5,432	1.8	315
	Zoroastrian Underground	-	-	-	800	4.7	120	812	3.4	90	1,612	4.0	209
	Excelsior	-	-	-	9,645	1.0	313	1,685	0.8	41	11,330	1.0	354
	Bardoc Satellite Open Pits	152	2.2	11	4,314	1.6	217	4,950	1.6	251	9,417	1.6	480
PNG	Simberi Oxide	3,600	1.2	138	9,800	1.1	335	5,200	1.1	177	18,600	1.1	650
	Simberi Sulphide	4,000	1.6	191	47,500	1.5	2,452	19,900	1.6	932	71,400	1.6	3,575
Canada	Atlantic Operations	23,393	1.1	834	28,815	1.0	936	6,428	1.1	221	58,636	1.1	1,990
<b>Total All Projects</b>		<b>37,169</b>	<b>1.7</b>	<b>2,046</b>	<b>181,527</b>	<b>2.0</b>	<b>11,744</b>	<b>52,304</b>	<b>1.7</b>	<b>2,944</b>	<b>271,001</b>	<b>1.9</b>	<b>16,733</b>

## Notes

1. Old South Gwalia Mineral Resource Estimate - refer ASX release titled "Q4 June FY22 Quarterly Report" dated 27 July 2022 which is available to view on [www.stbarbara.com.au](http://www.stbarbara.com.au)
2. All other Mineral Resources - refer ASX release titled "Q3 March FY22 Quarterly Report" dated 28 April 2022 which is available to view on [www.stbarbara.com.au](http://www.stbarbara.com.au)



# Competent persons statement

## Exploration Results

The information in this presentation that relates to Exploration Results is based on information compiled by Dr Roger Mustard, who is a Member of The Australasian Institute of Mining and Metallurgy. Dr Mustard is a full-time employee of St Barbara and has sufficient experience relevant to the style of mineralisation and type of deposit under consideration and to the activity which he is undertaking to qualify as a Competent Person as defined in the 2012 Edition of the 'Australasian Code for Reporting of Exploration Results, Mineral Resources and Ore Reserves'. Dr Mustard consents to the inclusion in the report of the matters based on his information in the form and context in which it appears.

Full details of recent exploration results in ASX release titled "Q4 March FY22 Quarterly Report" dated 27 July 2022 which is available to view on [www.stbarbara.com.au](http://www.stbarbara.com.au).

## Mineral Resources and Ore Reserve Estimates

The information in this presentation that relates to Mineral Resources for Old South Gwalia is extracted from the report titled 'Quarterly Report Q4 June FY22' released to the Australian Securities Exchange (ASX) on 27 July 2022 and available to view at [stbarbara.com.au](http://stbarbara.com.au) and for which Competent Persons' consents were obtained.

The information in this presentation that relates to all other Mineral Resources or Ore Reserves is extracted from the report titled 'Quarterly Report Q3 March FY22' released to the Australian Securities Exchange (ASX) on 28 April 2022 (Original Report) and available to view at [stbarbara.com.au](http://stbarbara.com.au) and for which Competent Persons' consents were obtained. Each Competent Person's consent remains in place for subsequent releases by the Company of the same information in the same form and context, until the consent is withdrawn or replaced by a subsequent report and accompanying consent.

The Company confirms that it is not aware of any new information or data that materially affects the information included in the Original Report and, in the case of estimates of Mineral Resources or Ore Reserves, that all material assumptions and technical parameters underpinning the estimates in the Original Report continue to apply and have not materially changed. The Company confirms that the form and context in which the Competent Person's findings are presented have not been materially modified from the Original Report. Full details are contained in Original Report available at [stbarbara.com.au](http://stbarbara.com.au).





## Non-IFRS Measures

We supplement our financial information reporting determined under International Financial Reporting Standards (IFRS) with certain non-IFRS financial measures, including cash operating costs. We believe that these measures provide meaningful information to assist management, investors and analysts in understanding our financial results and assessing our prospects for future performance.

<b>All-In Sustaining Cost (AISC)</b>	All-In Sustaining Cost is based on Cash Operating Costs, and adds items relevant to sustaining production. It includes some, but not all, of the components identified in World Gold Council's Guidance Note on Non-GAAP Metrics - All-In Sustaining Costs and All-In Costs (June 2013). Refer most recent quarterly report available at <a href="http://stbarbara.com.au">stbarbara.com.au</a> for example.
<b>Cash contribution</b>	Cash flow from operations before finance costs, refer reconciliation of cash movement in the most recent quarterly report available at <a href="http://stbarbara.com.au">stbarbara.com.au</a>
<b>Cash operating costs</b>	Calculated according to common mining industry practice using The Gold Institute (USA) Production Cost Standard (1999 revision). Refer most recent quarterly report available at <a href="http://stbarbara.com.au">stbarbara.com.au</a> for example
<b>EBIT</b>	Earnings before interest revenue, finance costs and income tax expense
<b>EBITDA</b>	EBIT before depreciation and amortisation
<b>EBITDA margin</b>	$\text{EBITDA} \div \text{Revenue}$
<b>Underlying EBITDA / NPAT</b>	EBITDA or NPAT after excluding identified significant items. Refer Interim Financial Report for half year ended 31 December 2021 Financial Report (p3) for details.
<b>Earnings Per Share (EPS)</b>	Profit attributable to equity holders (excluding any costs of servicing equity other than ordinary shares) / weighted average number of ordinary shares outstanding during the reporting period



# Investor Relations enquiries

## Chris Maitland

Head of Investor Relations

T: +61 3 8660 1914

M: +61 477 120 070

E: [chris.maitland@stbarbara.com.au](mailto:chris.maitland@stbarbara.com.au)

E: [info@stbarbara.com.au](mailto:info@stbarbara.com.au)

## Kasun Liyanaarachchi

Manager - Investor Relations

T: +61 8 9380 7854

M: +61 499 538 252

E: [kasun.liyanaarachchi@stbarbara.com.au](mailto:kasun.liyanaarachchi@stbarbara.com.au)

## Scheduled ASX Announcements

19 October 2022    Q1 September FY23 Quarterly Report

26 October 2022    Annual General Meeting

---





**St Barbara**