

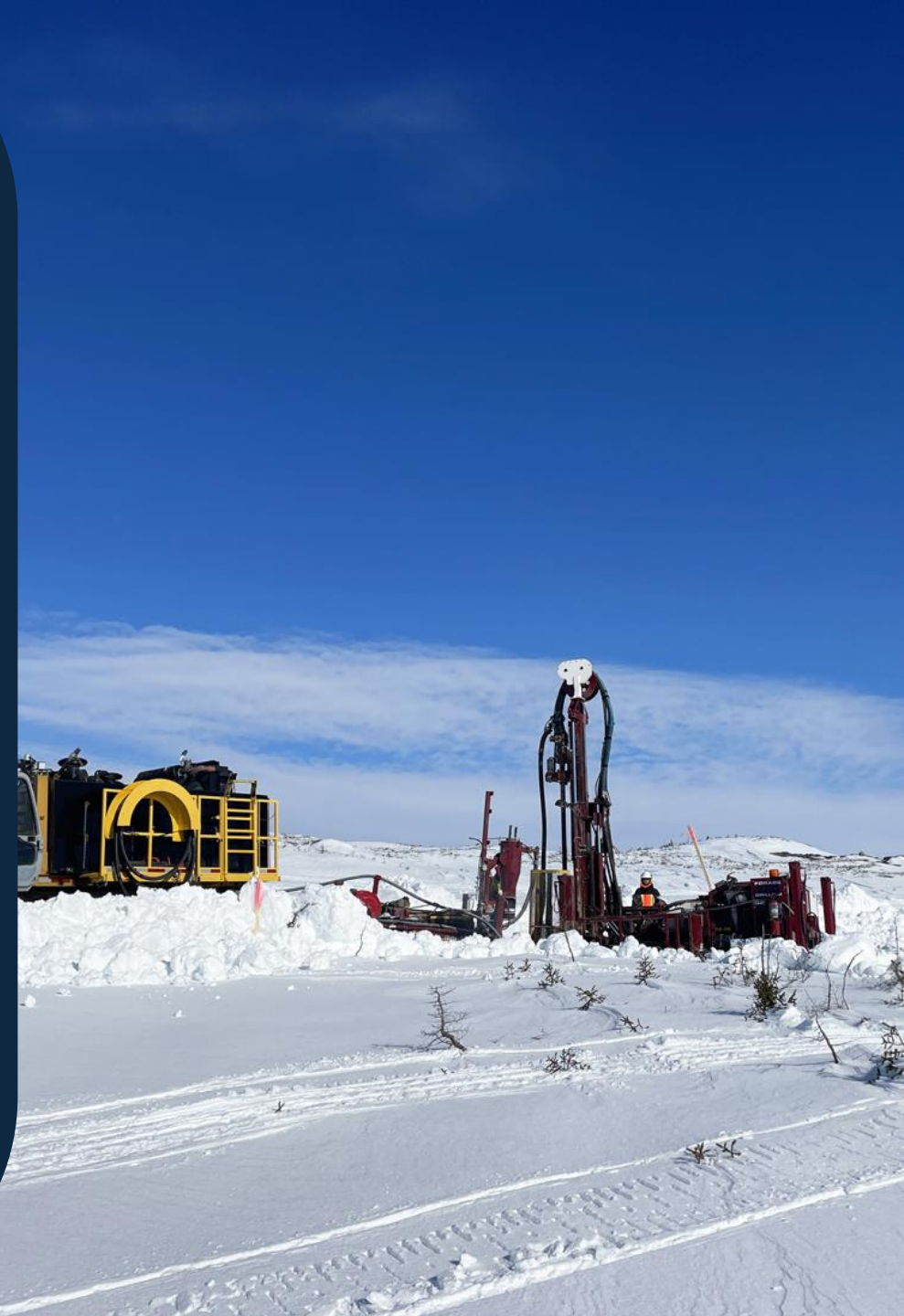


NOVEMBER 2024

Corporate Presentation

aumegametals.com

ASX: AAM | TSXV: AUM | OTCQB: AUMMF



Disclaimer and Forward Looking Statements



Disclaimer and Forward-Looking Statements

This presentation is not a prospectus nor an offer to sell, nor a solicitation of an offer to buy, securities for subscription or sale in any jurisdiction nor a securities recommendation. The information in this presentation is an overview and does not contain all information necessary for investment decisions. In making investment decisions, investors should rely on their own examination of AuMEGA Metals Limited (AuMEGA or the Company) and consult with their own legal, tax, business and/or financial advisers in connection with any acquisition of securities or interest in the Company. The information contained in this presentation has been prepared in good faith by the Company. However, no representation or warranty, express or implied, is made as to the completeness or adequacy of any statements, estimates, opinions or other information contained in this presentation. To the maximum extent permitted by law, the Company, its directors, officers, employees and agents disclaim all liability for any loss or damage which may be suffered by any person through the use of, or reliance on, anything contained in or omitted from this presentation.

Certain information in this presentation refers to the intentions of the Company, but these are not intended to be forecasts, forward looking statements, or statements about future matters for the purposes of the Corporations Act 2001 (Cth) or any other applicable law. Some statements contained in this presentation are "forward looking information" within the meaning of Canadian securities laws. Forward looking information include but are not limited to, statements and information regarding: drilling plans and the timing thereof; the ability of the Company to identify new exploration targets and rank and prioritize them; the prospectivity of the Company's deposits, the ability of the Company to maximize return on investment and generate long-term value; the potential for major discoveries; the ability to identify RC drill targets; and the impact of geological mapping on identifying drill targets and understanding geology. Generally, forward-looking information can be identified by the use of forward-looking terminology such as "plans", "expects", "upside potential", "is expected", "budget", "scheduled", "estimates", "forecasts", "intends", "anticipates", "believes" or variations of such words and phrases (including negative or grammatical variations) or statements that certain actions, events or results "may", "could", "would", "might" or "will be taken", "occur" or "be achieved" or the negative connotation thereof. Readers are cautioned that forward-looking statements and information are inherently uncertain and involve risks, assumptions and uncertainties that could cause actual facts to differ materially. Forward-looking information is subject to known and unknown risks, uncertainties and other important factors that may cause the actual results, performance or achievements to be materially different from those expressed or implied by such forward-looking information, including but not limited to: risks related to mining operations, including economic and political instability in foreign jurisdictions; risks related to current global financial conditions and other conditions (including acts of war, terrorism, armed hostilities, and pandemic); risks related to mining operations; actual results of current exploration activities; environmental risks; future prices of gold; possible variations in estimates of mineral resources, grade or recovery rates; mine exploration, development and operating risks; accidents, labour disputes and other risks of the mining industry; and delays in obtaining governmental approvals or financing. The foregoing and other important factors could cause actual results to differ materially from those contained in forward-looking information and statements. There can be no assurance that future developments will be those set forth in this presentation. The Company expressly disclaims, and does not undertake, any obligation to update any estimate at any particular time or in response to any particular event. The occurrence of events in the future are subject to risks, uncertainties and other factors that may alter the Company's actual results, performance or achievements to differ from those referred to in this presentation to occur as contemplated. The presentation contains only a synopsis of more detailed information available in relation to the matters described in this document and accordingly no reliance may be placed for any purpose whatsoever on the sufficiency or completeness of such information and to do so could potentially expose you to a significant risk of losing any of the property invested by you or incurring by you of additional liability. Recipients of this presentation should conduct their own investigation, evaluation and analysis of the business, data and property described in this presentation. In particular, any estimates or projections or opinions contained herein necessarily involve significant elements of subjective judgment, analysis and assumptions and you should satisfy yourself in relation to such matters.

Technical Report – TSXV – NI 43-101

Additional scientific and technical information regarding the Company's mineral project is contained in the technical report titled "Technical Report on the Cape Ray Gold Project, Newfoundland, Canada" dated May 28, 2024 (with an effective date of May 26, 2024), prepared by Trevor Rabb (P. Geo.) and Ronald Voordouw, (P. Geo) of Equity Exploration Consultants Ltd., and Andrew Kelly (P. Eng.) of Blue Coast Research.

Mineral Resource Estimates Reporting – ASX Listing Rule 5.23

The information in this Presentation that relates to the Mineral Resource estimate for the Cape Ray Gold Project was announced on ASX on 30 May 2023. AuMEGA confirms that it is not aware of any new information or data that materially affects the information included in the announcement of 30 May 2023 and that all material assumptions and technical parameters underpinning the Mineral Resource estimate in that announcement continue to apply and have not materially changed.

Mineral Resources are reported using a cut-off grade of 0.30 g/t gold for open pit and 2.00 g/t gold for underground. Assumptions for the open pit and underground grade cut-offs consider the following: a gold price of USD 1750 per troy ounce gold, selling costs of USD 5 per troy ounce gold, exchange rate of 1.3 USD:CAD, open pit mining costs of CAD 3 per tonne, underground mining costs of CAD 92.47 per tonne, processing costs of CAD 20 per tonne, G&A costs of CAD 5 per tonne processed, gold recovery of 96%, and royalty of 3% for Zone 4, 41 and Isle aux Morts and royalty of 1% for Window Glass Hill, Angus, PW Zone and Zone 51. The open pit Mineral Resources are constrained using optimized pit shells that have been generated using Lerchs Grossman algorithm with parameters outlined above, using a maximum of 50 degree pit slopes. The underground Mineral Resources are constrained using a 2.00 g/t gold grade shell below the optimized pit based on the assumptions summarised above.

The Mineral Resource Estimate for the Cape Ray Gold Project has been prepared by Trevor Rabb, P.Geo. (EGBC #39599 and PEGNL #11155) who is a Competent Person as defined by JORC 2012. EGBC (formerly APEGBC) and PEGNL (APEGNL) are Recognised Professional Organisations accepted for the purpose of reporting in accordance with appendix 5A of the Australian Securities Exchange Listing Rules. Mineral Resources for the Cape Ray Gold Project have an effective date of 22 February 2023.

Exploration Results Reporting – ASX Listing Rule 5.23

The information in this Presentation that relates to exploration results reported through Company ASX announcements that can be found on the Company's website: www.aumegametals.com.

Data in this presentation have been previously disclosed by the Company and referenced in previous JORC Table 1 releases. Please see announcements dated: Mineral Resource estimate announced on 30 May 2023, Company 2024 exploration announcements on 28 August 2019, 31 October 2019, 29 October 2020, 16 January 2024, 23 May 2024 and 31 July 2024, Malachite announcements dated 20 August 2024, 20 April 2022, 8 June 2022, 12 September 2022, 14 September 2022, 6 October 2022, 12 December 2022, 25 January 2023 and 11 October 2023, Long Range announcements on 14 April 2021, 31 October 2019, 23 February 2023 and 24 August 2023, Bunker Hill announcements on 14 April 2021, 22 March 2023 and 6 April 2023, Hermitage prospecting results announced on 18 May 2023 and 13 November 2023, Grandy's announcements on 29 October 2020, 17 February 2021, 18 November 2021, 11 October 2023, Intersection related announcements 16 January 2024 and 29 October 2020, Hermitage announcement on 5 September 2024, 18 March 2024, Winter RC drill results reported on 23 April 2024 and 28 May 2024 and the Resource Corridor announcement on 5 June 2024. Targeting workshop news release dated 4 July 2024. AuMEGA confirms that it is not aware of any new information or data that materially affects the information included in those announcements.

Fully funded for the Company's largest ever exploration program in 2025



DISTRICT SCALE LAND PACKAGE

On a proven multi-million-ounce gold structure



"BLUE-CHIP" SHAREHOLDER REGISTER

Led by B2Gold as a strategic investor



WORLD-CLASS EXPLORATION

To maximise return on investment, create long-term value



TOP-NOTCH BOARD & MANAGEMENT

With a proven track record of making major discoveries, creating value



HIGH-GRADE, SHALLOW MINERAL RESOURCE

One of only a few explorers in Newfoundland with a defined mineral resource



CAPITAL STRUCTURE

TRADING SYMBOLS

AAM
ASX

AUM
TSXV

AUMMF
OTCQB

MARKET METRICS

A\$29.5M

Market Capitalisation⁽¹⁾

A\$3.3M

Cash Balance⁽³⁾

A\$16.9M

Enterprise Value⁽¹⁾⁽⁴⁾

1.08M

Daily Avg Volumes⁽¹⁾

526M

Shares Outstanding⁽¹⁾

58M

Employee Options⁽³⁾

MINERAL RESOURCES⁽²⁾

INFERRED RESOURCES

3.5 Mt @ 1.4 g/t
for **160** koz Au











INDICATED RESOURCES

6.2 Mt @ 2.25 g/t
for **450** koz Au

LARGEST SHAREHOLDERS⁽⁴⁾

INVESTOR

OWNERSHIP

1.	GBA/Shaws HNW ⁽⁵⁾		13.0%
2.	B2Gold		9.7%
3.	SSI Asset Management		5.1%
4.	US Institution		4.8%
5.	Australian Institution		4.1%
6.	UK Institution		3.5%
7.	US Resource Fund		2.9%
8.	Canadian Institution		2.1%
9.	Australian Institution		2.0%
10.	Asia-Pac Institution		1.1%

50.0%

1. As at 1 November 2024

2. Based on Mineral Resources reported 30 May 2023

3. As at 30 September 2024, excludes recently closed Tranche One Financing with gross proceeds of C\$8.77 million

4. Excludes the figures related to the recently announced private placement financing

5. HNW = High net worth representing underlying investors of these firms

Upsized Private Placement Financing



Significant demand for new and existing shareholders for gross proceeds C\$16.1 million

Gross Values (Before Costs)	Pricing (per share)	Tranche 1 (closed)	Tranche 2 (subject to shareholder approval)	TOTAL
Premium Flow Through	C\$0.068 / A\$0.074	C\$8.31 million	C\$1.95 million	C\$10.3 million
Traditional Flow Through	C\$0.060 / A\$0.065	-	C\$2.06 million	C\$2.06 million
Hard Dollars	C\$0.050 / A\$0.054	C\$0.46 million	C\$3.34 million	C\$3.80 million
TOTAL	C\$0.062 / A\$0.067	C\$8.77 million	C\$7.34 million	C\$16.1 million

SHARE PLACEMENT

TSXV
71%

ASX
29%

INVESTOR GEOGRAPHIC COMPOSITION

North America
72%

Europe
11%

Australia
10%

Asia
7%

INVESTOR COMPOSITION

Existing
42%

New
58%

Non-Retail
81%

Retail
19%

Highly Experienced Board & Management

Seasoned Mining & Exploration Experience With Proven Track Record Of Success



Management

Sam Pazuki

Managing Director & CEO



20+ years' energy & mining experience
Ex-OceanaGold, EY, Enbridge
Corporate development, investor relations, engineering, management consulting

Rick Greenwood

VP, Exploration



20+ years' exploration experience
Ex-Kinross, Great Bear, Goldcorp, Rainy River
Structural geologist with extensive gold grassroots to resource definition experience

Ryan Finkelstein

Chief Financial Officer



16+ years of experience in accounting and audit
Ex-Grant Thornton, Carbon Group, Automic Group
Chartered Accountant with strong experience in risk management, accounting, etc.

Giles Dodds

Manager, Exploration



10+ years' exploration experience
Ex-Sumitomo, Rio Tinto, Glencore
Grassroots gold exploration in Australia and Canada

Board of Directors

Justin Osborne

Chair



30+ years' mining experience
Ex-Gold Fields, Gold Road
Non-executive director of IGO, Hamelin Gold, Astral Resources

Nikki Adshead-Bell

Non-Executive Director



27+ years corporate, buy-side & sell-side experience in the mining industry
Non-executive director of Altius Minerals, Dundee Precious Metals and Hot Chili

Kerry Sparkes

Non-Executive Director



30+ years' mining experience
Founder and director of Orla Mining. Ex-Franco Nevada, Rainy River Resources, Voisey's Bay, etc.
Non-executive director of Aurion Resources and Prime Mining

Carol Marinkovich

Executive Director & Company Secretary



25+ years' mining experience
Extensive experience in Corporate Governance Practices as a Company Secretary within Australia and Internationally



Several discrete projects of scale along both prospective gold structures in Newfoundland



DISTRICT SCALE LAND PACKAGE

On a proven multi-million-ounce gold structure



SIGNIFICANT POTENTIAL FOR MAJOR DISCOVERIES

Multiple opportunities to unlock value



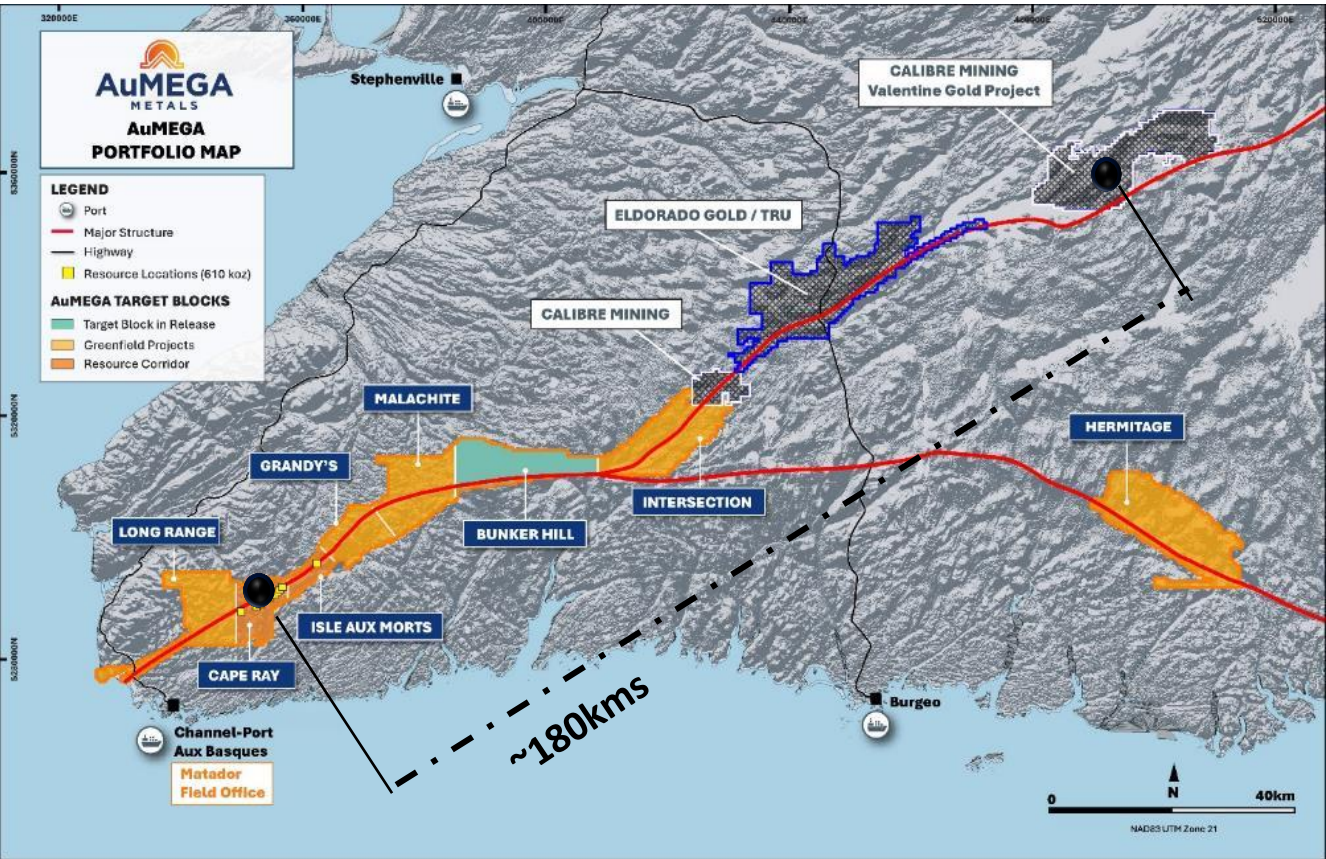
LIMITED EXPLORATION TO-DATE

Lack of exploration presents unique opportunities



THE RIGHT GEOLOGIC SETTING, PATHFINDERS

The right rocks on the right structures to host large deposits



Comprehensive 2024 Exploration Program



COMPLETED INAUGURAL BOH RC DRILL PROGRAM

Three large mineralised zones identified

Malachite

DIAMOND DRILLING IN SPRING/SUMMER

3,000 metres drilling; phase two assays pending

Malachite

Cape Ray

GEOPHYSICS & GEOCHEMISTRY

High-resolution airborne magnetics, Electro-magnetics
Till/soil sampling

Hermitage

Intersection

Bunker Hill

GEOLOGICAL MAPPING, MODELLING & PROSPECTING

Low-cost, high value target/project generation

Hermitage

Cape Ray

Blue Cove



2024 Progress and News Flow

Mar Q 2024

Winter Exploration Program

Inaugural RC drill program

Hermitage Gold-Antimony
Structure Identified



Jun Q 2024

Spring & Summer Exploration Program

Phase One Diamond Drilling

Geochemical Surveys

Winter RC Results: Three large,
mineralised zones identified

Acquired option to Acquire High-Grade
Copper Project in NL

Rebranded as AuMEGA Metals
TSXV Listing: AUM

Completed comprehensive
technical workshop



Sep Q 2024

Phase Two Diamond Drilling

Geophysical and Geochemical surveys

Several new exploration targets
identified; 37 targets now in total

Phase one drilling extends mineralisation
at Central Zone



Dec Q 2024

Results, analysis & planning

Planning for 2025

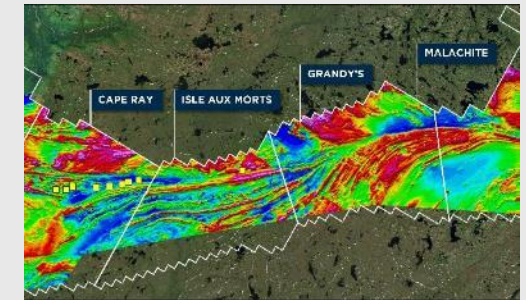
Geophysical and Geochemical surveys

Bunker Hill geophysics reveals significant
structures

Intersection & Bunker Hill Phase One till
survey results

Bunker Hill Phase Two till survey results
TBD

Phase two diamond drilling results
TBD





Bunker Hill



Bunker Hill And Intersection

Expansive area with limited historic exploration work with indicators of intrusive mineralisation

Recent High-Grade Outcrop Results ⁽¹⁾

- Copper: 17.2%, 12.4% & 4.1%
- Silver: 19.1 g/t, 16.9 g/t
- Significant fluorite, iron oxides, tellurium & bismuth

Significant Historical Samples at Bunker Hill⁽²⁾

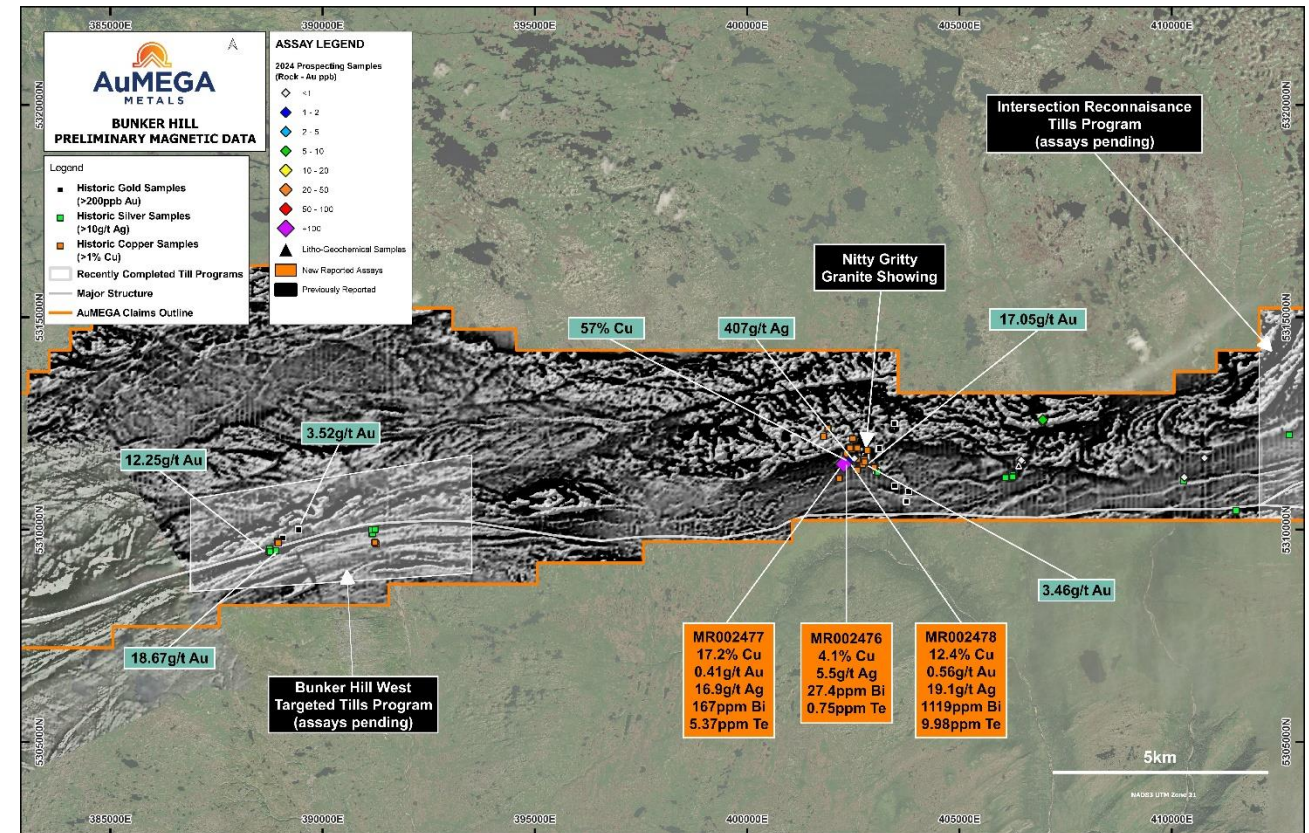
- Gold: 18.7 g/t, 17.1 g/t
- Silver: 407.5 g/t, 35.3 g/t
- Copper: up to 57%

High-Resolution Airborne Magnetic Survey⁽³⁾

- Covering Bunker Hill Project, which currently has no magnetics

Intersection⁽⁴⁾ is Site of Two Major Structures

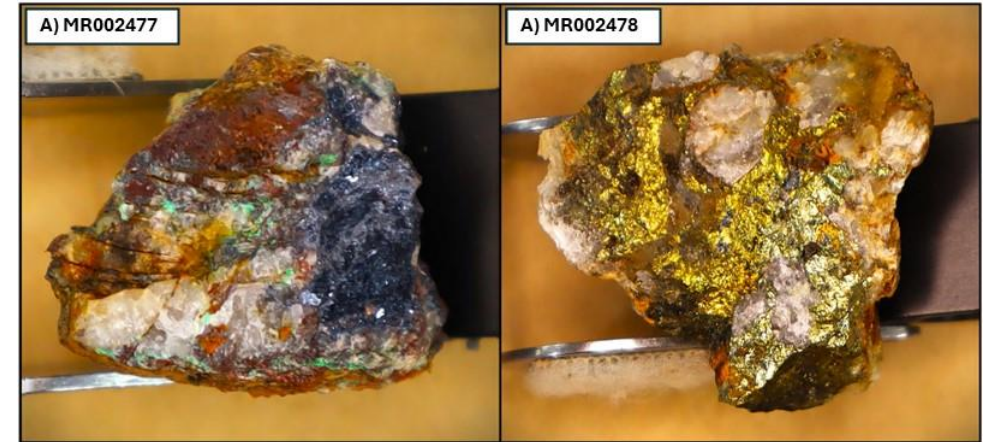
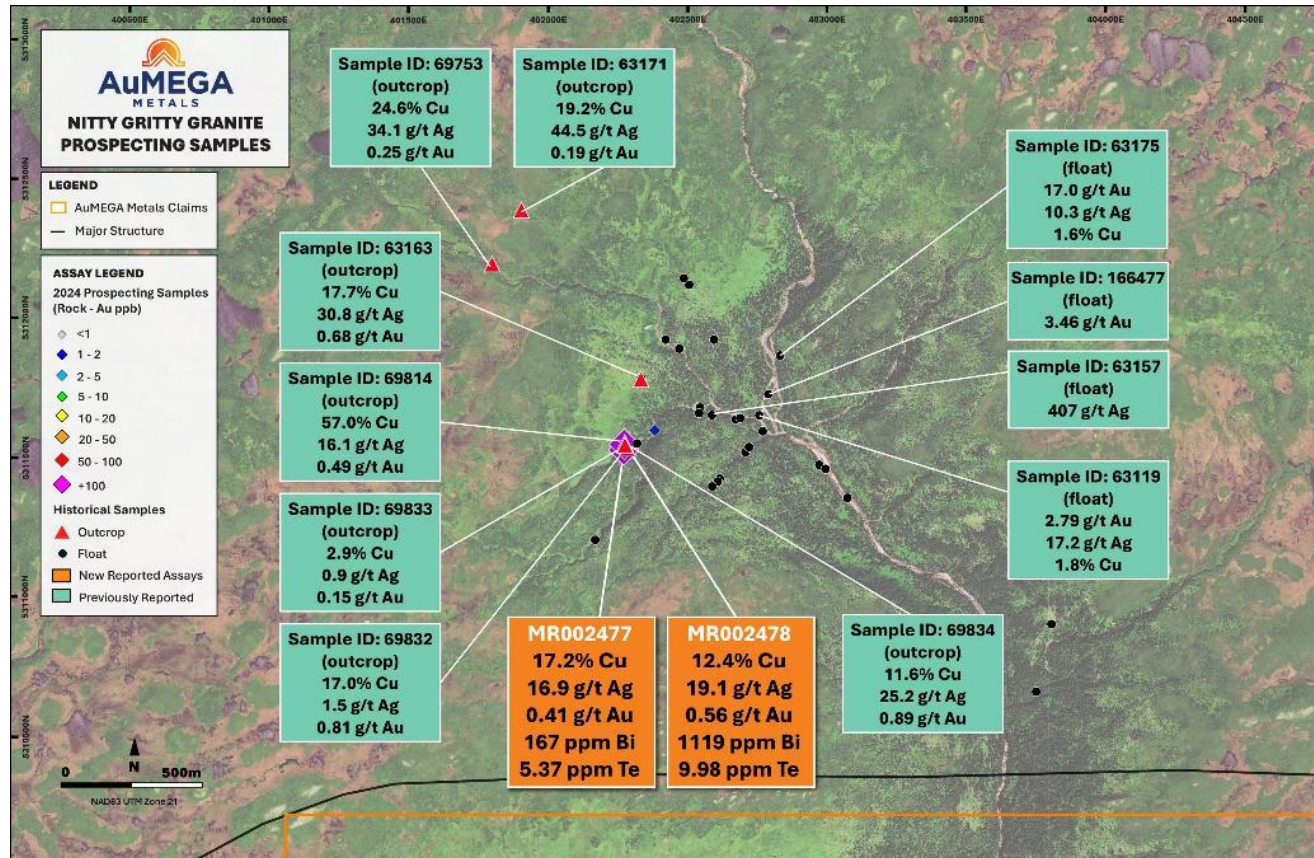
- Convergence of Cape Ray Shear and Hermitage Flexure



1. ASX Announcement 24 September 2024
2. ASX Announcements 6 April 2023, 22 March 2023 and 14 April 2021
3. ASX Announcement 15 October 2024
4. ASX Announcements 16 January 2024 and 29 October 2020

Bunker Hill Higher Grade Copper Samples

Two major intrusive structures identified across this large, vastly underexplored property



Nitty Gritty Granite

- Displays several features characteristic of potential porphyry mineralisation
- Nearly one kilometre of strike identified
- Significant pathfinders including chalcocite-malachite, chalcopyrite-bornite, iron oxides, fluorite, etc.



Intersection



Highly encouraging gold in till results with four large anomalous areas defined

Target Area 1

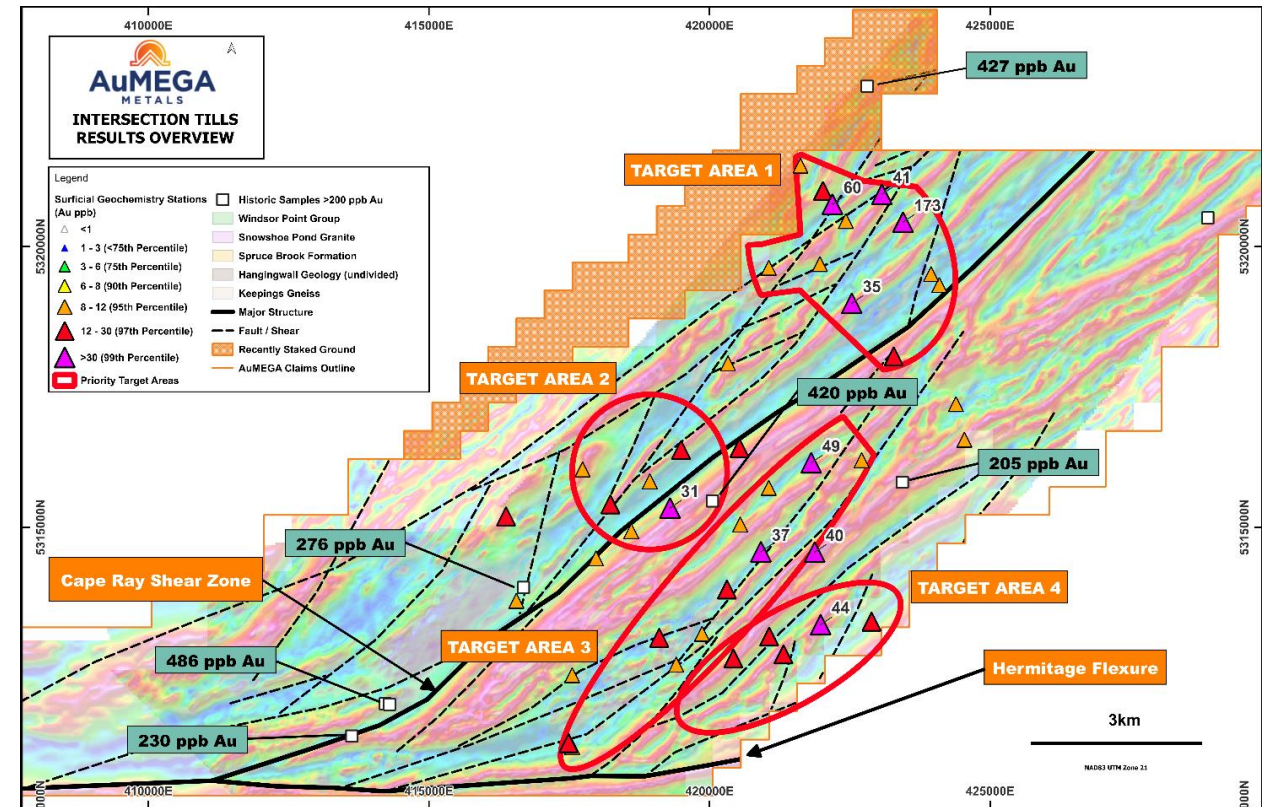
- Elevated gold situated adjacent to several major second and third order structures
- Geologically complex with two-kilometres of strike

Target Area 2

- Similar structural position to Target Area 1
- Cluster of gold-in-till anomalism off several CRSZ plays

Target Areas 3 and 4

- Several second and third order structures over seven kilometres of strike by four kilometres wide
- Gold-in-till anomalism splaying of Hermitage Flexure



1. See ASX announcements dated 30 October 2024

Valentine Project Comparison

Valentine deposits presenting similar attributes to that of Bunker Hill and Intersection

Structural Setting

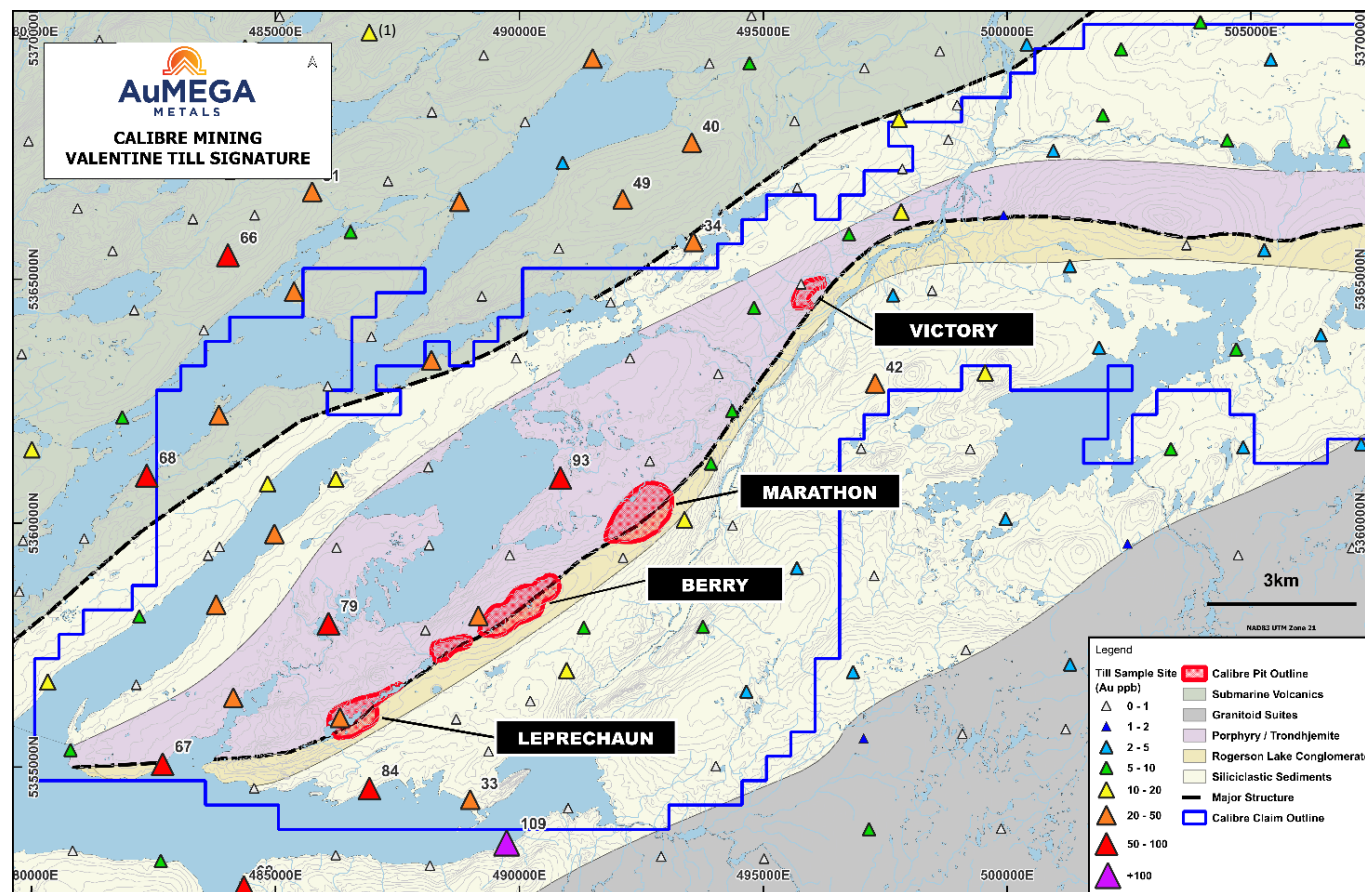
- Structural setting of Valentine deposits provides insights for Bunker Hill and Intersection and other targets along the CRSZ
- Structural setting appears similar to that of Bunker Hill and Intersection

Till Results

- Historic Valentine till results are similar in amplitude and scale to the recently announced Intersection till results
- The till samples act as a vector for future drill targets

Valentine Growth

- Exponential increase in the resource when new areas were explored and capital availability increased



1. Image Source: Calibre Mining & NL Government



Resource Corridor



Phase One Diamond Drilling Yielded Positive Results

INDICATED MINERAL RESOURCES⁽¹⁾
6.2 Mt @ 2.25 g/t for 450 koz Au

INFERRED MINERAL RESOURCES⁽¹⁾
3.5 Mt @ 1.4 g/t for 160 koz Au

2024 Diamond Drilling Completed

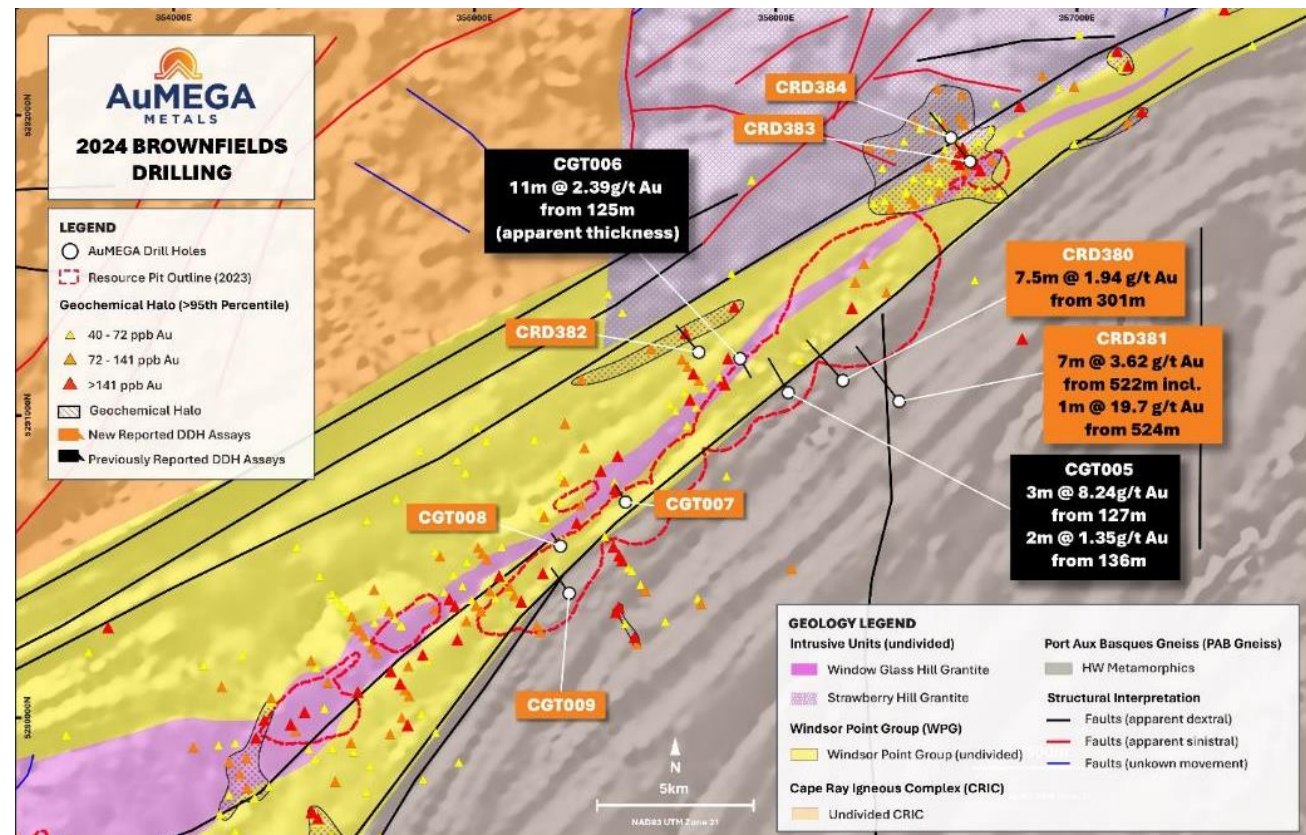
- Approximately 1,900 metres drilling
- Deepest ever hole drilled at Central Zone (614m)

Mineralisation Extended at Central Zone

- Drilling intersected gold mineralisation down plunge of the 04 and 41 zones

Significant Intersections⁽²⁾

- Zone 04: 3.62 g/t Au over 7 metres including 19.7 g/t over one metre
- Zone 41: 1.94 g/t Au over 7.5 metres and 5.74 g/t over one metre



1. ASX announcement dated 30 May 2023
2. ASX announcement dated 11 September 2024

Additional Targets Identified in Resource Corridor

Intriguing results from the diamond drill program identifies additional future targets

Mineralisation Extended at Central Zone⁽¹⁾

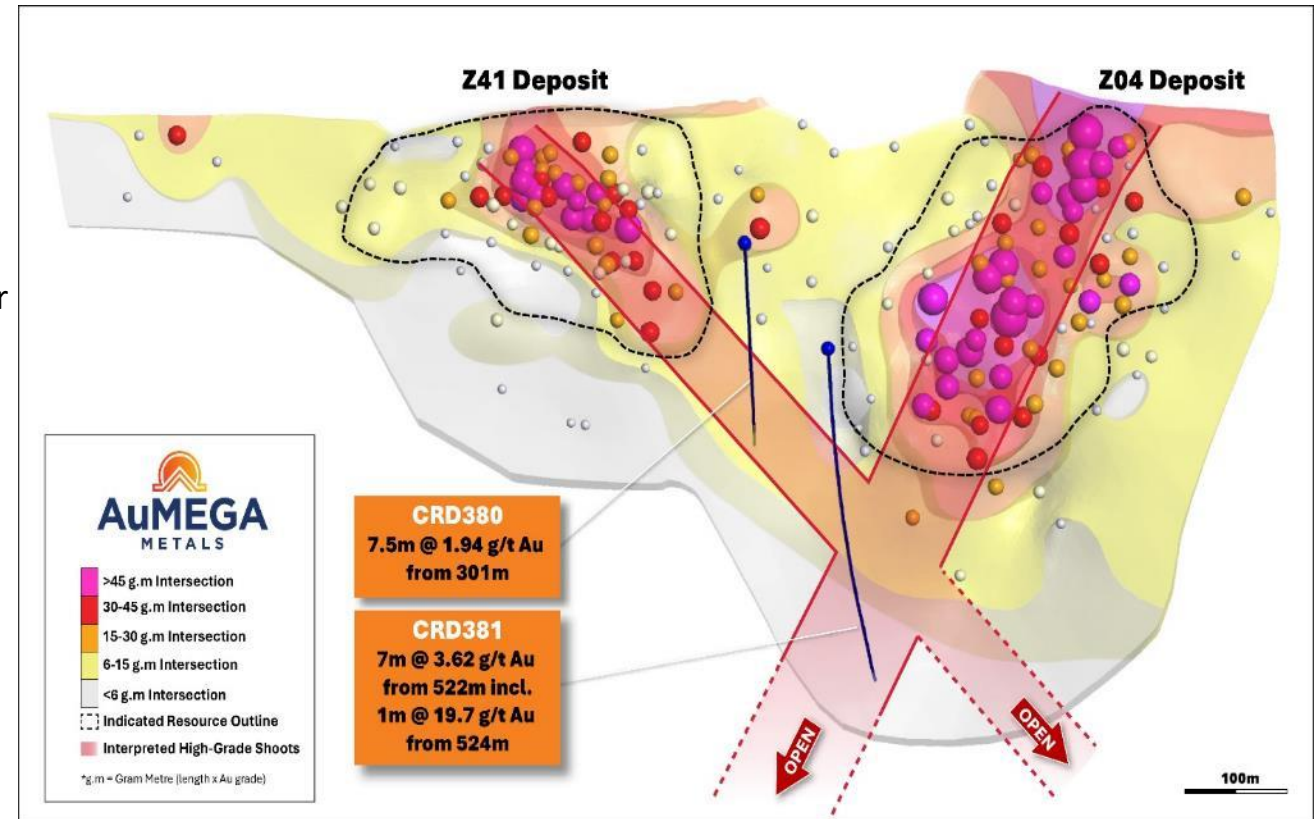
- Both Zones 04 and 41 open down plunge and at depth

Intersected Intriguing Geological Units

- Drilling intersected the Window Glass Hill Granite and similar felsic unit at Central Zone
- Strawberry Hill Granite appears intrusive related

Mineralised Geotechnical Holes⁽²⁾

- Intersected 2.39 g/t over 11 metres (apparent thickness)
- Intersected 8.24 g/t over three metres including 13.9 g/t over one metre



1. ASX announcement dated 11 September 2024

2. ASX announcement dated 5 June 2024

New regional kinematic framework presents significant change to previous theories

Comprehensive Structural Review

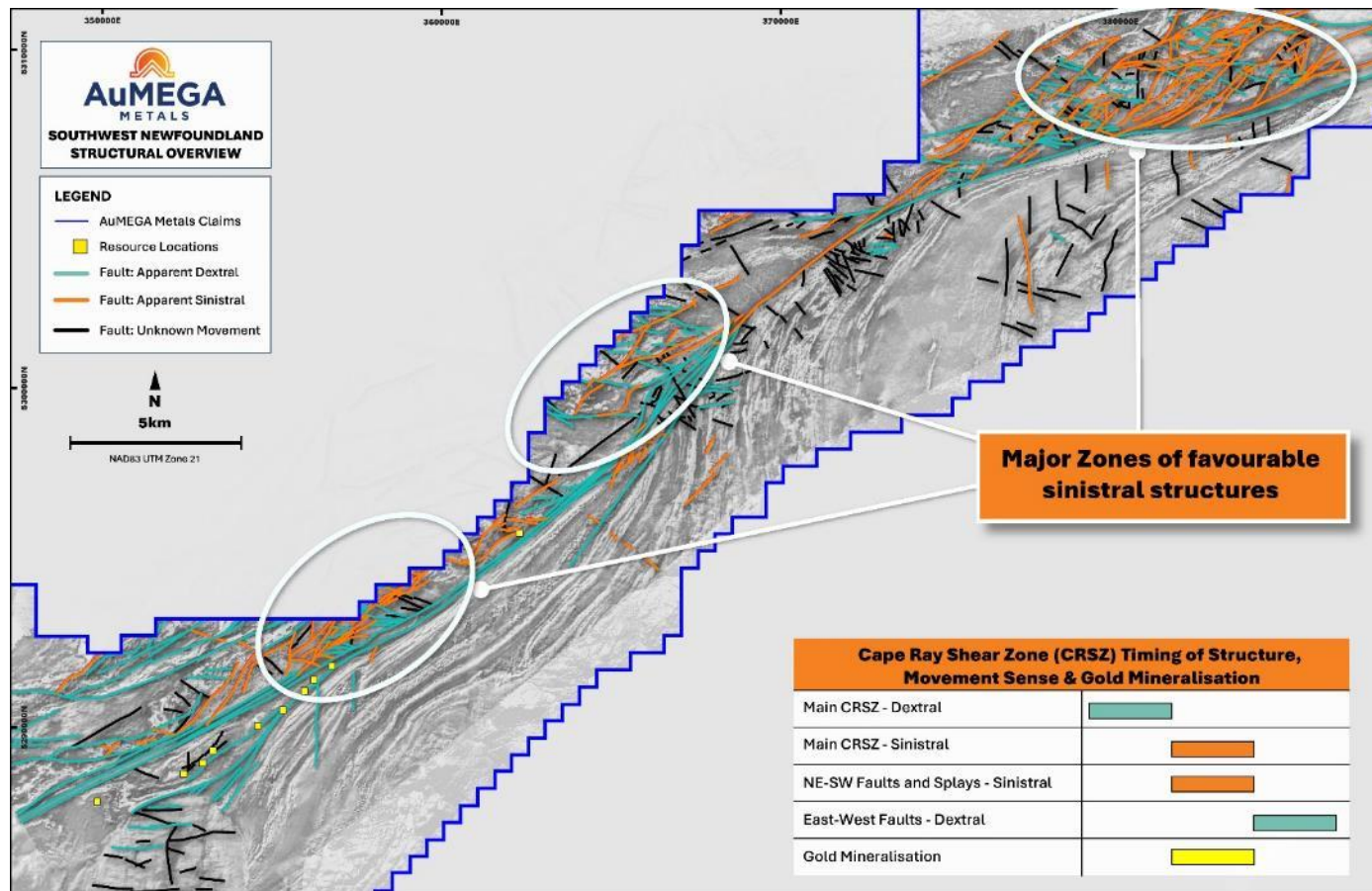
- Review of drill core, geochemistry and geophysics

Variable Contributions to Gold Fluid Transport

- Metal inventory hypothesized as sourced from intrusion-related fluids

Major Change to Kinetic Framework

- Age of mineralisation later than previous believed or tested





Hermitage



Largest arsenic & antimony anomaly in Newfoundland – with confirmed association with gold

Significant Gold Belt

- Structural hosts other major gold discoveries including NewFound Gold's Queensway Project

Geologically Akin to Major Global Gold Deposits

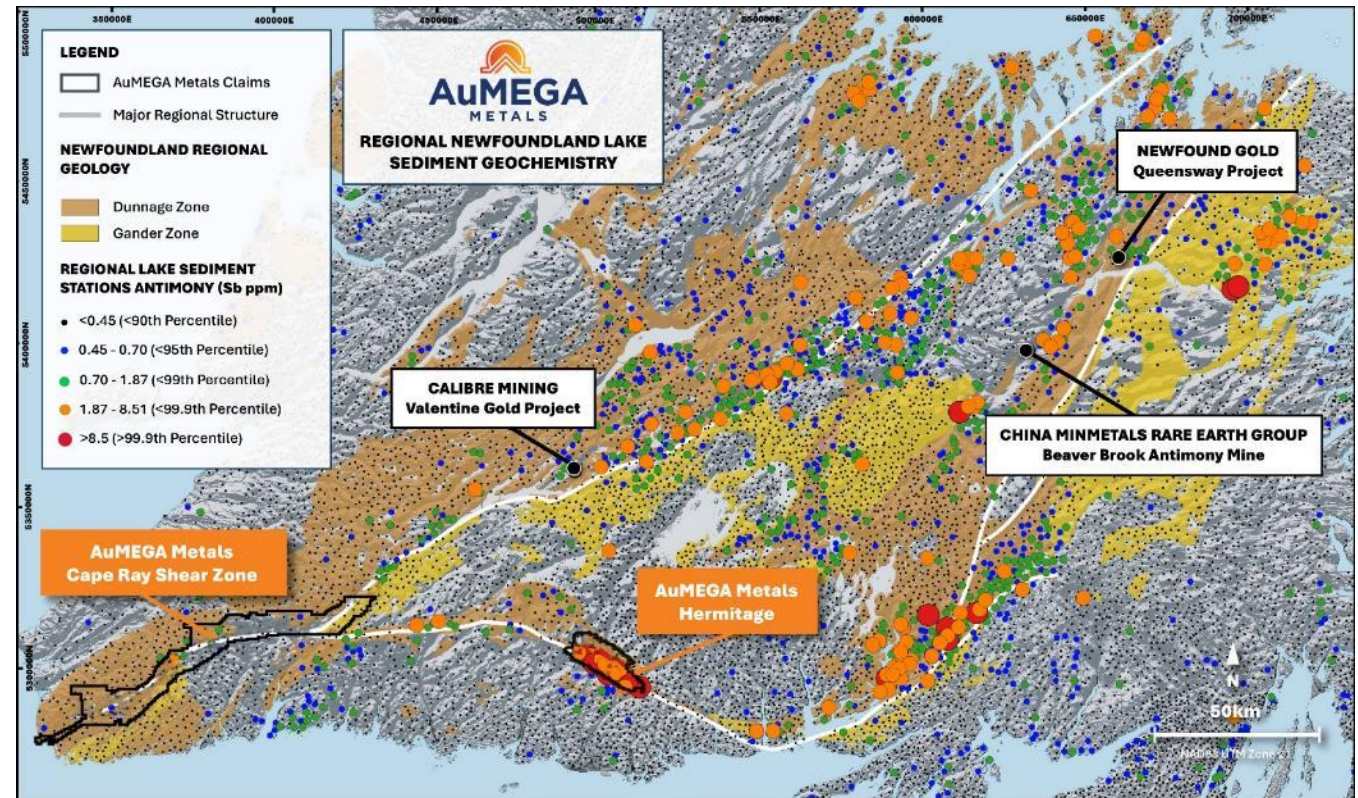
- Similar age of mineralisation, geology and pathfinder elements to Bendigo, Fosterville

Large Land Position

- Over 270 square kilometres on vastly underexplored, remote area

Unique Geologic Setting

- Orientation completely different to all other major geological structures in Newfoundland



Limited exploration to-date has yielded significant results that support Hermitage's big potential

Multi-gram Gold Discovered Through Prospecting

- 7.31 g/t, 2.15 g/t, 2.10 g/t (all outcrops) with significant pathfinders⁽¹⁾

Scale of Opportunity is Considerable

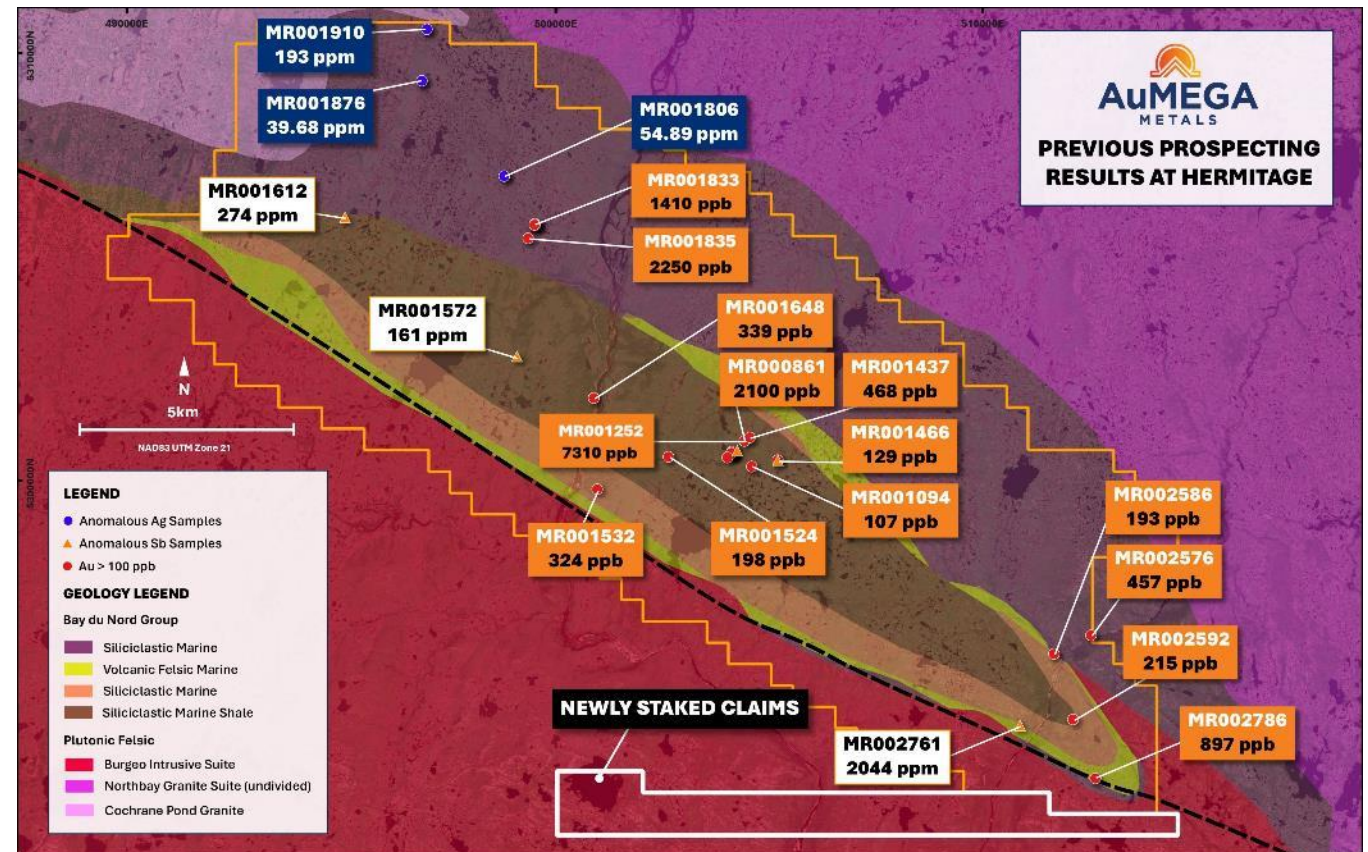
- Over 17 samples > 100 ppb Au over seven kilometres from 2022 discoveries⁽¹⁾

Pathfinders Akin to Bendigo/Fosterville

- Results indicate arsenic-gold and antimony-gold associations

Significant Hydrothermal Activity

- Discovered series of large outcropping quartz veins and vein arrays in multiple locations⁽¹⁾



1. See ASX announcements dated 5 September 2024, 12 November 2023, 13 September 2023, 17 May 2023

Advancing high-priority, highly prospective targets for future drilling

High-Value Geophysics

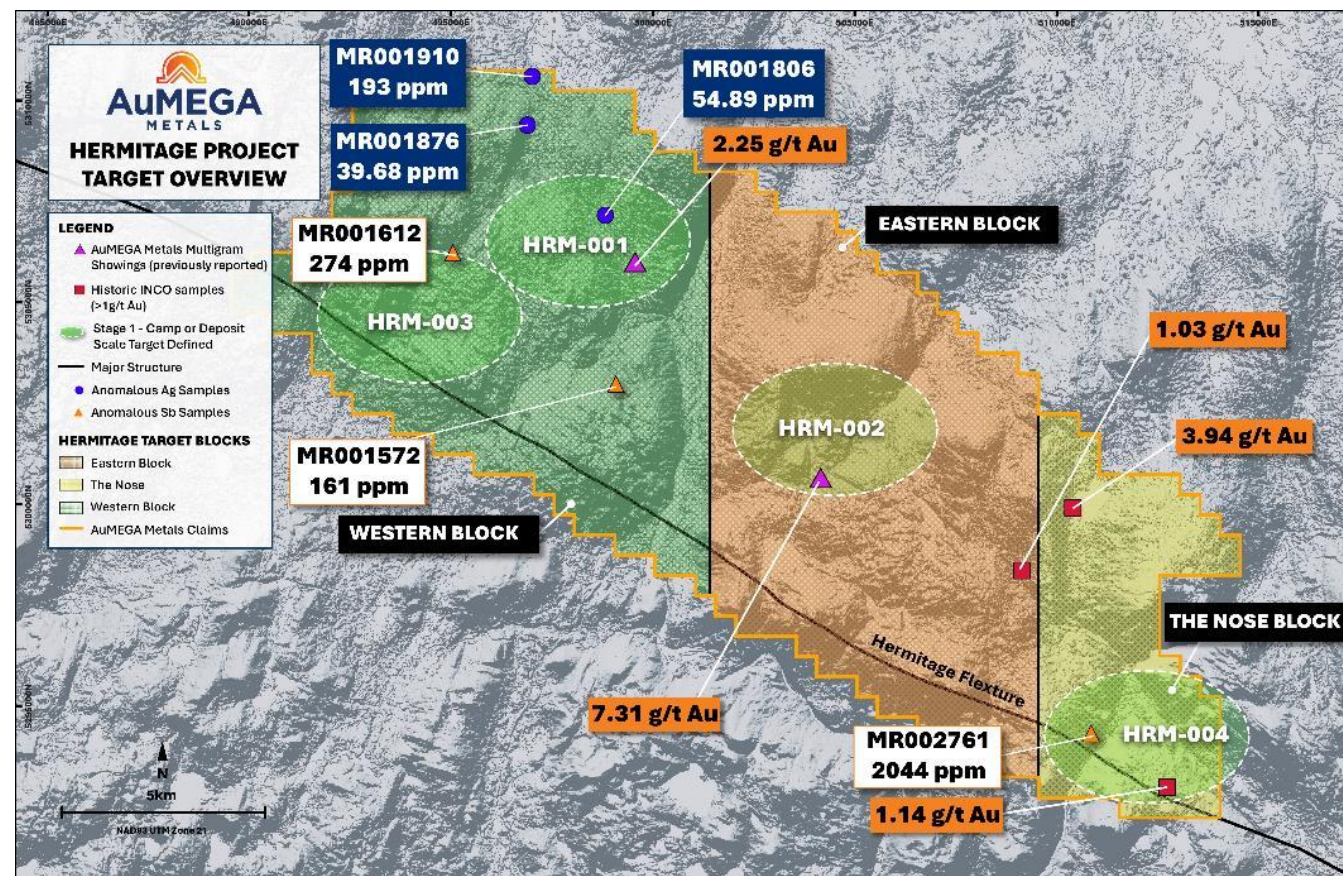
- Higher resolution airborne magnetics planned to better define geological structures and features

Comprehensive Geological Mapping & Prospecting

- To better understand the geology for more effective targeting

Identify Specific RC Drill Targets

- Planning for a winter RC drill program



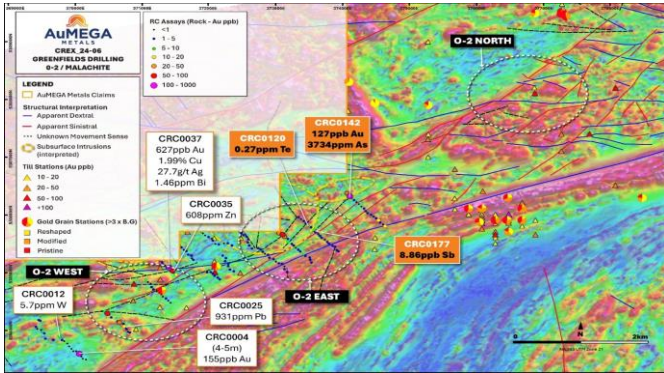
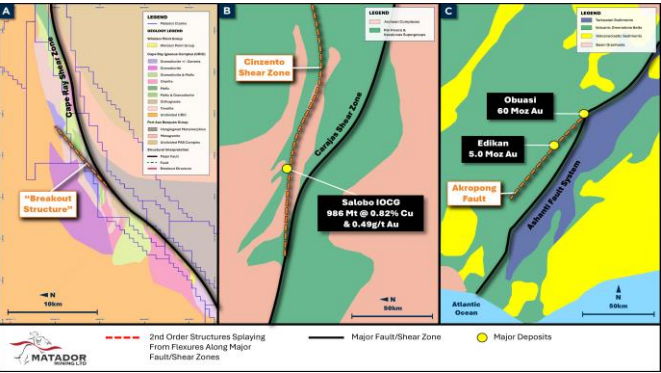
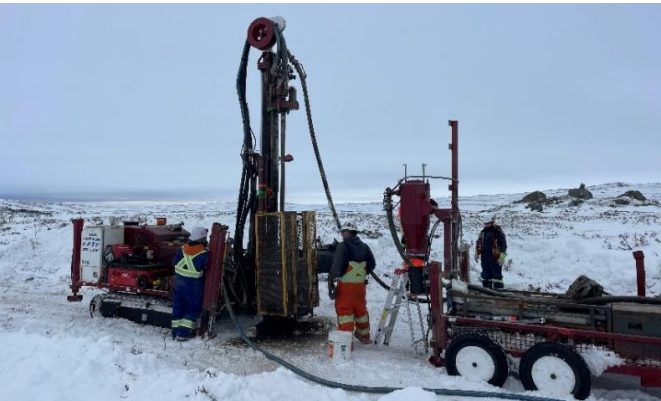
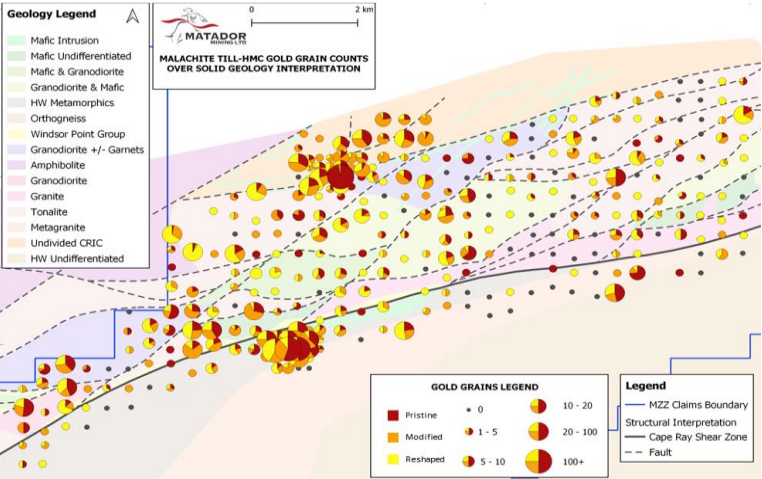
1. See ASX announcements dated 5 September 2024, 4 July 2024, 2 November 2023, 13 September 2023, 17 May 2023



Malachite



Malachite Progression



Malachite 2024 Winter RC Drill Program

Multiple anomalous trends identified using gold and pathfinder results

First-ever RC BOH/BOT Sampling Program

- Tested highly prospective geological feature identified through early-stage works
- Tested major breakout structure off significant bend in Cape Ray Shear Zone

Three Large Mineralised Zones Identified

- BOH gold values well above benchmark
- Quartz-veining with sulphides

Diamond Drilling in Progress

- Several targets identified through results of the RC program



Malachite Diamond Drilling in Progress

Completed highly successful winter RC drill program that identified several diamond drill targets⁽¹⁾

Reconnaissance diamond drill program

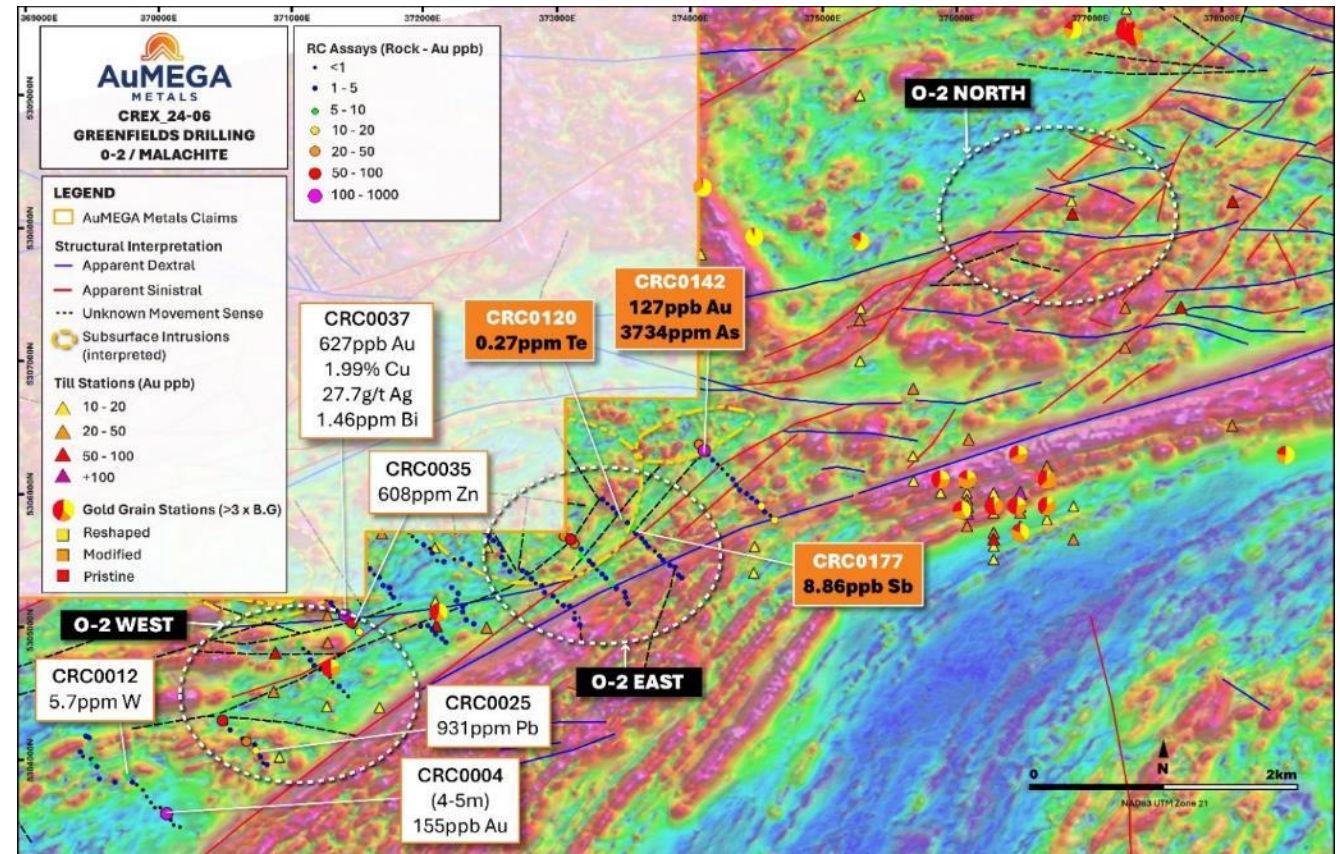
- Approximately 1,000 to 1,500 metres planned
- Initial program ahead of larger program

O-2 East Target

- CRC0037 delivered 627 ppb Au and 1.99% Cu only 6m down
- BOH was into structure splaying off O-2 target

O-2 West Target

- CRC37: Significant gold (127 ppb) and pathfinder (3734ppm As) up further along the O-2 target
- Mineralised zone spanning 1.2 kilometres



1. See ASX announcements dated 23 April 2024 & 28 May 2024

Proven Approach For Major Discoveries



Company

**RUPERT RESOURCES
(RUP.TO)**

Project

IKKARI

Resource

4 Moz Au+

Early discovery method

RC drilling – Basal Till

Initial results

0.2 ppm Au

Company

**GOLD ROAD
(GOR.AX)**

Project

GRUYERE

Resource

8-10 Moz Au

Early discovery method

RAB drilling - BOH

Initial results

0.01 – 0.1 g/t Au

Company

**ANGLOGOLD ASHANTI
(AU:US)**

Project

SUNRISE DAM

Resource

15 Moz Au+

Early discovery method

Aircore drilling – BOH

Initial results

BLEG survey

Company

**DE GREY MINING
(DEG.AX)**

Project

HEMI

Resource

10 Moz Au+

Early discovery method

Aircore drilling – BOH

Initial results

2 g/t Au

Company

**ANGLOGOLD ASHANTI
(AU:US)**

Project

TROPICANA

Resource

8-10 Moz Au

Early discovery method

Aircore/RC drilling – BOH

Initial results

0.2 – 2 g/t Au

Company

**GOLD FIELDS
(GFI.JO)**

Project

INVINCIBLE

Resource

> 5 Moz Au

Early discovery method

Aircore / RC drilling – BOH

Initial results

0.1 g/t Au

Company

AUMEGA METALS

Project

VARIOUS

Resource

0.61 Moz Au and growing?

Early discovery method

RC drilling – BOH / Basal Till

Initial results to-date

**0.10 g/t to 0.63 g/t Au
across 60-kilometre
stretch**



Blue Cove Copper Project



Low-cost exposure to early-stage copper ± lead, zinc and silver exploration project

Significant Strike Length

- Approximately 48 km² of claims covering 25 km of continuous strike

Five Primary Target Areas Identified

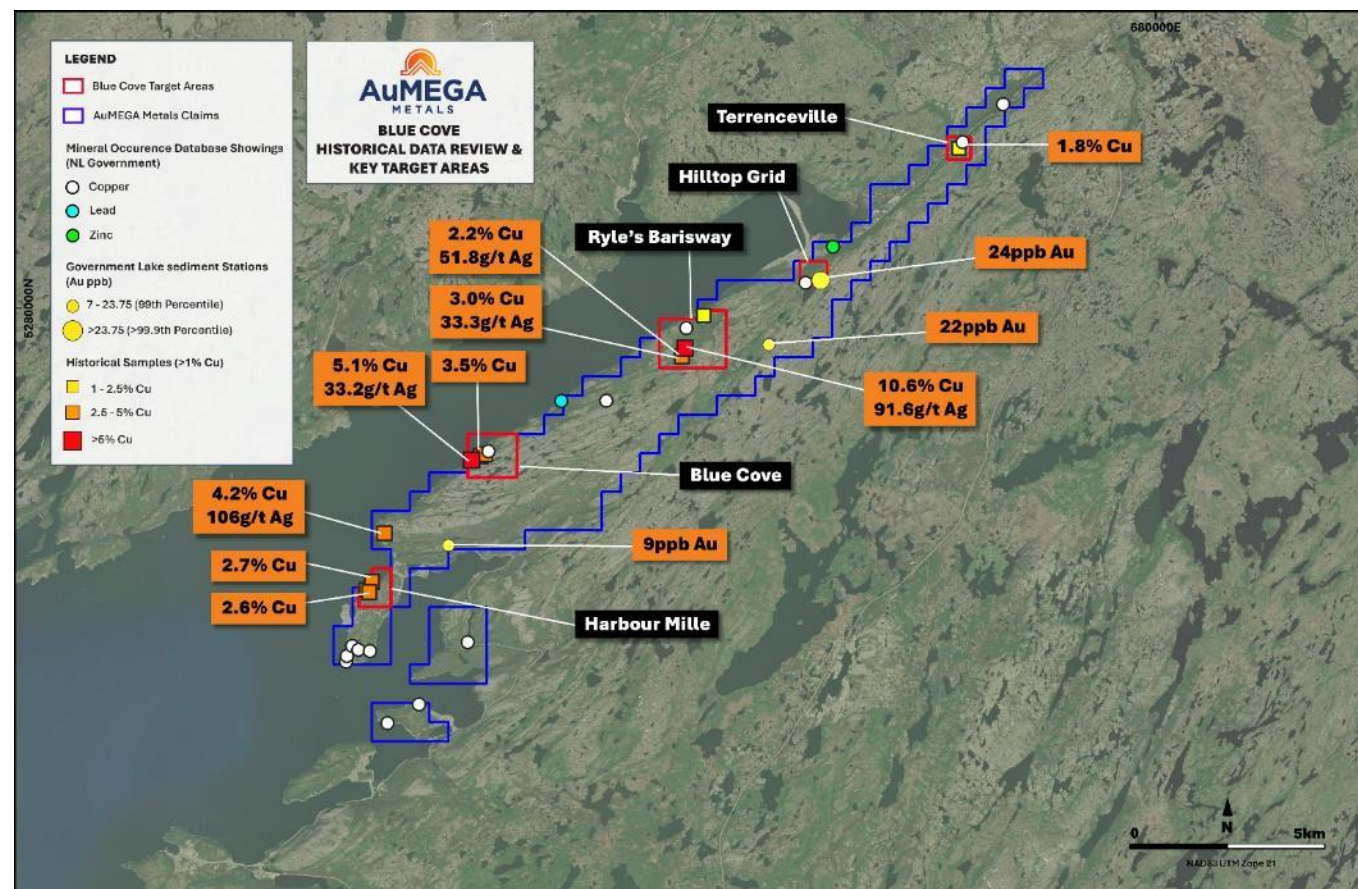
- Each with several high-grade copper samples and multi-element soil geochemical anomalies

High-Grade Copper and Silver

- Dozens of high-grade samples grading up to 10.6% copper and 91.6 g/t silver

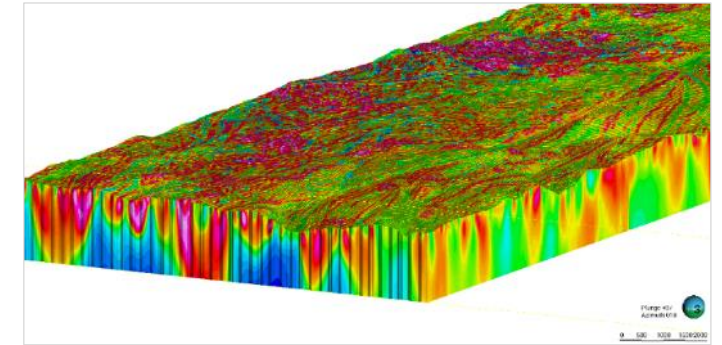
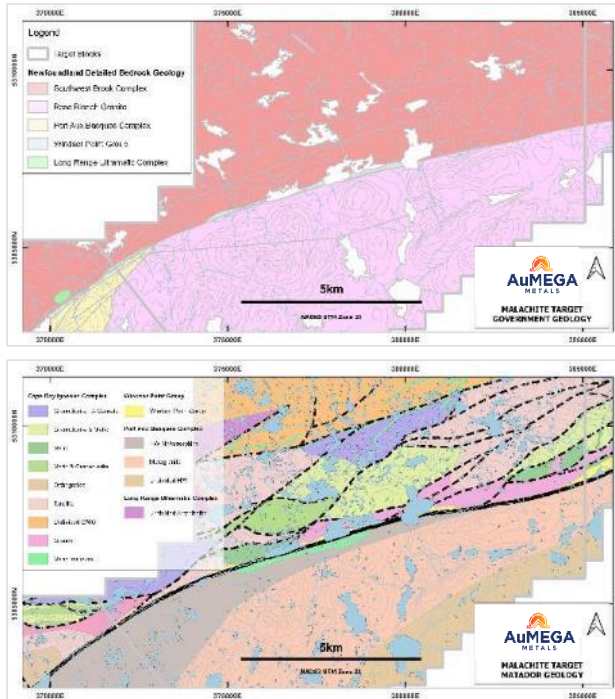
Future 2024 Program Planned

- Low-cost, early-stage exploration activities planned for later in the year



1. See ASX announcement dated 1 May 2024

Best-in-class Exploration



Prospecting, Mapping & Sampling

First pass exploration work to identified key areas of interest

Geophysics And Geochemistry

Understanding geological structures and discovery of anomalous gold

Bottom-of-Hole / Basal Till Sampling

Lower cost RC drilling to source gold in basement, vector in on diamond drilling

Diamond Drilling And Geological Modelling

Drilling advanced targets with aim of major discovery

Resource Building And Definition

Extensional and infill drilling to advance to design and permitting

AuMEGA Metals Limited

24 Hasler Road, Osborne Park
WA 6017 Australia
Ph: +61 8 6117 0478 (Australia)
Ph: +1 780 665 4925 (Canada)
E: info@aumegametals.com



www.aumegametals.com



[@aumegametals](https://twitter.com/aumegametals)



<https://au.linkedin.com/company/aumega-metals>

ASX: AAM | TSXV: AUM | OTCQB: AUMMF

A Portfolio of Potential

Cape Ray

Large geochemical and geophysical targets remain untested by drilling in the direct Brownfields environment

Down-plunge, along strike and footwall resource extension opportunities

Untested Windsor Point Group

Untested indications of subsurface plutons/intrusions

Increased understanding of the kinematics and timing of gold mineralisation – advantage previous explorers haven't had

Large structures in footwall (Cape Ray Igneous Complex) and Hanging wall untested

Intersection

Intersection of two major structural features

Major bend in the CRSZ back to the NE-SW orientation

Underexplored

Complex geology and structural history requiring more pragmatic modern day exploration work

Untested WPG

Underexplored

Long Range

Untested Windsor Point Group throughout strike

Complex structural geometries

Historic and AuMega anomalous geochemistry / prospecting results

Bedrock gold mineralisation confirmed: prospecting and drilling (pending)

Lack of systematic modern exploration conducted for large portion of target

Malachite

Complex structural geometries: situated on first major bend in the CRSZ

Large brittle structures splaying off the CRSZ

World-class analogies to this Malachite's structural geometries such as Salobo and Obuasi

Variable host lithologies

Increased understanding of the kinematics and timing of gold mineralisation – advantage previous explorers haven't had

Various large untested geochemical and geophysical anomalies

Drilling has identified anomalous bedrock gold and large zones of hydrothermal fluid flow/alteration

Isle Aux Morts

Untested IAM deposit analogies

Untested Windsor Point Group

Open mineralisation from previous drill campaigns (Stag Hill)

Anomalous geochemistry in key structural positions

Increased understanding of the kinematics and timing of gold mineralisation – advantage previous explorers haven't had

Bunker Hill

Structural anomaly to the NE-SW trending CRSZ: target is in the east-west portion

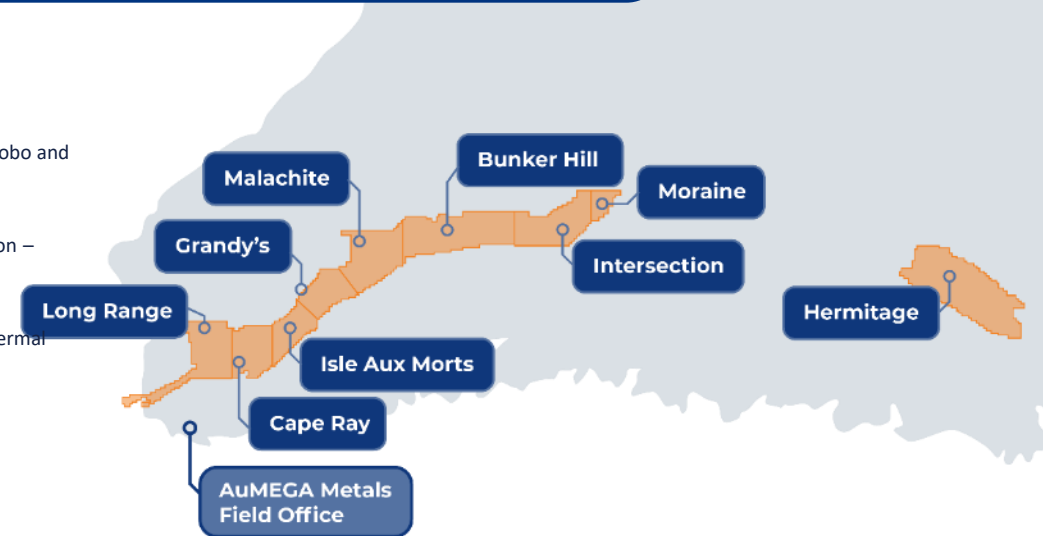
Variable lithologies: Untested intra-shear granites same age as WGH. Evidence of episodic bimodal igneous activity.

Sedimentary package: potential late basin extensional structural regime

Favourable marker horizons and exploration targets in global goldfields (Yilgarn terrain) – theoretical attribute

Large geochemical anomalies rich in base and precious metals

Analogous age and structural setting to Lachlan Fold Belt (NSW, Aus) which hosts large gold-copper deposits (theoretical attribute)



Grandy's

Complex structural geometries: commencement of the first major bend in the CRSZ

World-class analogies to Grandy's structural geometries such as Salobo and Obuasi – large CRSZ parallel footwall brittle structures and splays

Variable host lithologies

Increased understanding of the kinematics and timing of gold mineralisation – advantage previous explorers haven't had

Various large untested geochemical and geophysical anomalies

Drilling (assays pending) visually show large zones of hydrothermal fluid flow/alteration

Hermitage

Confirmed bedrock mineralisation over large areas

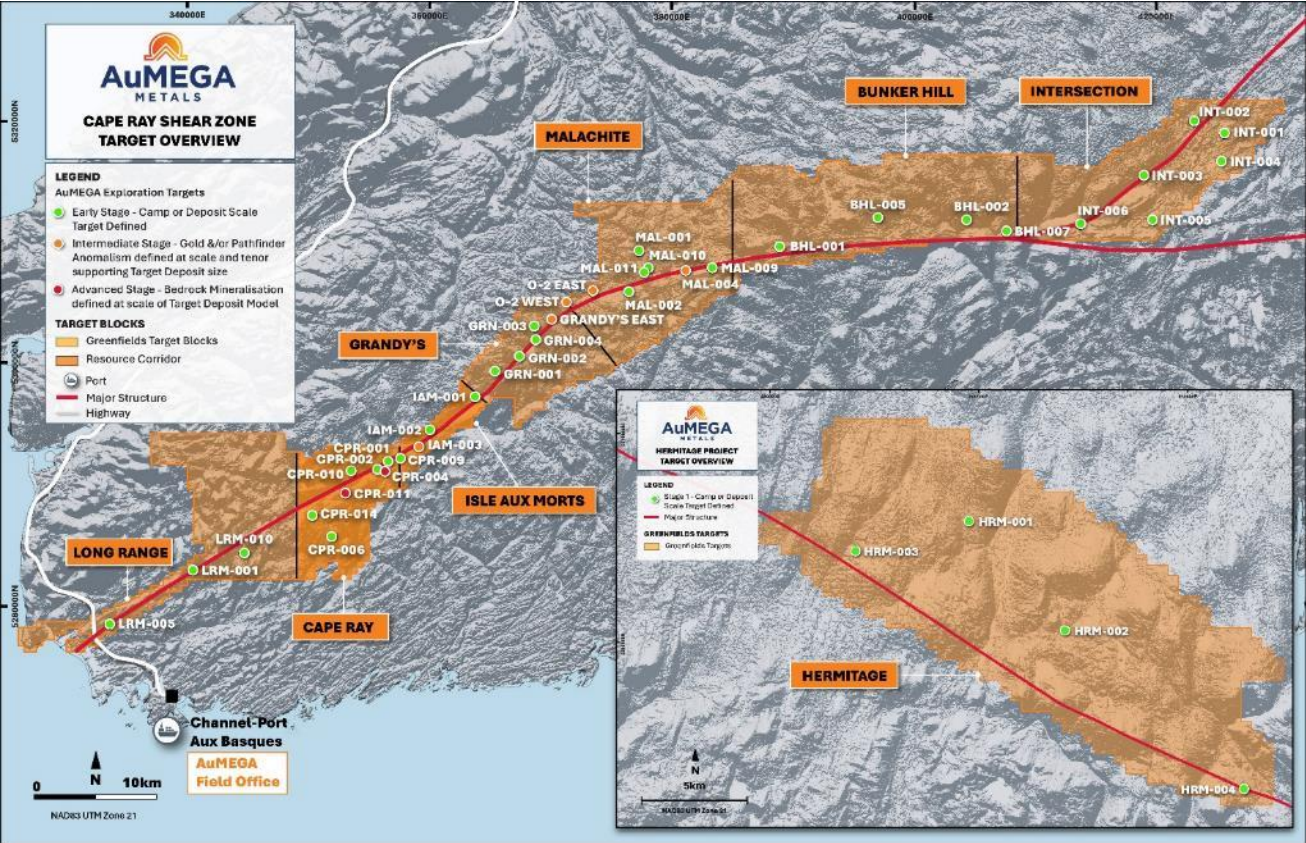
Great host lithologies. Analogous to global world-class deposits such as Fosterville, Bendigo

Structural anomaly: NWN-ESE orientated Hermitage Flexure / Bay d'Espoir Shear Zone – anomalous to the islands general NE-SW trend: potential dilatant anomaly

Hydrothermal systems identified. Vast swarms of veining and alteration

True Greenfields potential

Identified 37 targets including nine new targets that will be ranked, prioritized and work programs developed to advance through opportunity pipeline

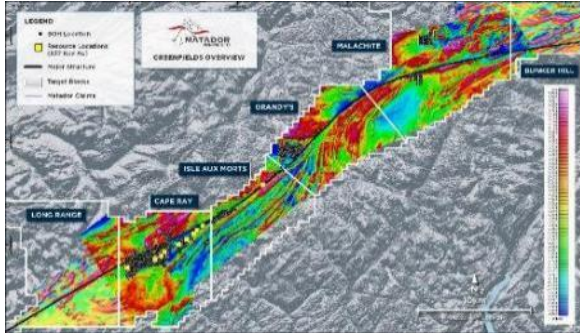




ADVANCED STAGE			CRP-004	CRP-011		
INTERMEDIATE STAGE		IAM-003	O-2 EAST	O-2 WEST	GRANDY'S EAST	MAL-004
EARLY STAGE	INT-001	INT-002	INT-003	INT-004	INT-005	INT-006
	BHL-001	BHL-002	BHL-005	BHL-005	GRN-001	GRN-002
	GRN-003	GRN-004	MAL-001	MAL-002	MAL-005	MAL-009
	MAL-010	MAL-011	CRP-001	CRP-002	CRP-006	CRP-009
CRP-010	CRP-014	IAM-001	IAM-002	LRM-001	LRM-005	LRM-010

1. See ASX announcement dated 4 July 2024

Systematic Exploration that Respects Shareholder Capital



EARLY STAGE

- Prospecting, sampling and mapping
- Geophysics (e.g. gravity) and geochemistry



INTERMEDIATE STAGE

- Bottom of hole / basal till sampling
- Advanced geophysics (e.g. IP and EM)



ADVANCED STAGE

- Diamond drilling for new resource discovery

Balanced Exploration Program

Mix of exploration within the resource corridor & Greenfields

Building a Pipeline of Opportunities

Effective approach to test the extensive land package

Return on Investment

Ensure capital is allocated to generate the highest risk-adjusted returns

Detailed Mineral Resource Estimate⁽¹⁾

Open Pit Mineral Resource Estimate							Underground Mineral Resource Estimate			
Resource Classification	Deposit	Zone	Cut-off Grade g/t Au	Tonnes kt	Grade g/t Au	Contained Metal koz Au	Cut-off Grade g/t Au	Tonnes kt	Grade g/t Au	Contained Metal koz Au
INDICATED MINERAL RESOURCES	Central Zone	Zone 4	0.30	1,205	3.88	151	2.00	169	2.89	16
		Zone 51	0.30	546	5.15	90	2.00	91	4.70	14
		Zone 41	0.30	841	2.04	55	2.00	8	2.82	1
		PW	0.30	533	0.99	17	-	-	-	-
		H Zone	0.30	70	1.24	3	-	-	-	-
		Central Total	0.30	3,196	3.07	316	2.00	268	3.50	30
	WGH	WGH	0.30	2,512	1.01	81	-	-	-	-
		Angus	0.30	-	-	-	-	-	-	-
		WGH Total	0.30	2,512	1.01	81	-	-	-	-
	Isle Aux Morts	All	0.30	220	2.81	20	-	-	-	-
INFERRED MINERAL RESOURCES	Big Pond	All	0.30	14	5.63	3	-	-	-	-
	TOTAL OP INDICATED		0.30	5,943	2.20	420	2.00	268	3.50	30
	Central Zone	Zone 4	0.30	180	3.43	20	2.00	21	3.19	2
		Zone 51	0.30	51	2.28	4	2.00	80	5.17	13
		Zone 41	0.30	104	3.16	11	2.00	36	3.29	4
		PW	0.30	620	1.32	26	-	-	-	-
		H Zone	0.30	4	0.81	0.1	-	-	-	-
		Central Total	0.30	959	1.97	61	2.00	137	4.38	19
	WGH	WGH	0.30	1,192	0.98	37	-	-	-	-
		Angus	0.30	842	0.79	21	-	-	-	-
		WGH Total	0.30	2,034	0.90	59	-	-	-	-
	Isle Aux Morts	All	0.30	244	1.93	15	-	-	-	-
	Big Pond	All	0.30	74	2.50	6	-	-	-	-
	TOTAL OP INFERRED		0.30	3,311	1.32	141	2.00	137	4.38	19

1. ASX announcement dated 30 May 2023