

## ASX Announcement

18 February 2025



### Investor Presentation

Turaco Gold Limited (**ASX | TCG**) ('**Turaco**' or the '**Company**') Managing Director, Justin Tremain will be presenting at the RIU Fremantle Explorers Conference on Tuesday, 18 February 2025. The Company's investor presentation is attached.

This announcement is authorised for release by the Company Secretary of Turaco Gold Limited.

**ENDS**

Ben Larkin

Company Secretary

Turaco Gold Limited

Phone: +61 8 9480 0402

#### Turaco Gold Limited

ASX: TCG

Web: [turacogold.com.au](http://turacogold.com.au)

X / Twitter: @TuracoGold

LinkedIn: [/company/turaco-gold/](https://www.linkedin.com/company/turaco-gold/)

#### Contact

Level 1, 50 Ord Street  
West Perth WA 6015

Phone: +61 8 9480 0402

#### Directors

John Fitzgerald  
Non-Executive Chairman

Justin Tremain  
Managing Director

Alan Campbell  
Non-Executive Director

Bruce Mowat  
Non-Executive Director

# Afema Gold Project

2.5Moz and Growing Rapidly

Emerging Multi Million Ounce Gold Project  
Cote d'Ivoire





# Disclaimer & Cautionary Statement

This Presentation has been prepared as a summary only and does not contain all information about Turaco Gold Limited's ("TCG", "Turaco" or the "Company") assets and liabilities, financial position and performance, profits and losses, prospects and rights and liabilities. The information in this Presentation and made to you verbally is subject to updating, completion, revision, further verification and amendment without notice.

The information contained in this Presentation or subsequently provided to the Recipient of this Presentation whether orally or in writing by or on behalf of the Company or its employees, agents or consultants ("Information") is provided to the Recipients on the terms and conditions set out in this notice. The purpose of this Presentation is to provide Recipients with Information relating to the Company. The Presentation has been prepared by the Company and each Recipient must make his/her own independent assessment and investigation of the Company and its business and assets and should not rely on any statement or the adequacy and accuracy of any Information contained in this Presentation.

The Company makes no representation or warranty (express or implied) as to the accuracy, reliability or completeness of the Information. The Company and its directors, employees, agents and consultants shall have no liability (including liability to any person by reason of negligence or negligent misstatement) for any statements, opinions, information or matters (express or implied) arising out of, contained in or derived from, or for any omissions from the Presentation, except liability under statute that cannot be excluded.

The performance and operations of the Company may be influenced by a number of factors, many of which are outside the control of the Company. No representation or warranty, express or implied, is made by the Company or any of its directors, officers, employees, advisers or agents that any intentions, expectations or plans will be achieved either totally or partially or that any particular rate of return will be achieved. This Presentation does not constitute in any way an offer or invitation to subscribe for securities in the Company pursuant to the Corporations Act.

Statements regarding the Company's plans with respect to its mineral properties are forward-looking statements. There can be no assurance that the Company's plans for development and or sale of its mineral properties will proceed as currently expected. There can also be no assurance that the Company will be able to confirm the presence of mineral deposits, that any mineralisation will prove to be economic or that a mine will successfully be developed on any of the Company's mineral properties.

The information in this report that relates to Exploration Results is based on, and fairly represents, information compiled by Mr Elliot Grant, who is a Member of the Australasian Institute of Geoscientists. Mr Grant is a full-time employee of the Company and has sufficient experience which is relevant to the style of mineralisation and type of deposit under consideration and to the activity he is undertaking to qualify as a competent person as defined in the 2012 Edition of the "Australasian Code for reporting of Exploration Results, Exploration Targets, Mineral Resources and Ore Reserves" (JORC Code). Mr Grant consents to the inclusion in this report of the matters based upon his information in the form and context in which it appears.

The information in this report that relates to Mineral Resource estimates is based on information compiled by Mr Brian Wolfe, an independent consultant to Turaco Gold Ltd and a Member of the Australasian Institute of Geoscientists. Mr Wolfe has sufficient experience which is relevant to the style of mineralisation and type of deposit under consideration and to the activity he is undertaking to qualify as a competent person as defined in the 2012 Edition of the "Australasian Code for reporting of Exploration Results, Exploration Targets, Mineral Resources and Ore Reserves" (JORC Code). Mr Wolfe consents to the inclusion in this report of the matters based upon the information in the form and context in which it appears.

The information in this report that relates to metallurgical testwork is based on, and fairly represents, information compiled by Mr Ian Thomas, who is a Member of the Australasian Institute of Mining and Metallurgy. Mr Thomas is a part-time employee of Turaco Gold Ltd and has sufficient experience which is relevant to the style of mineralisation and type of deposit under consideration and to the activity he is undertaking to qualify as a competent person as defined in the 2012 Edition of the "Australasian Code for reporting of Exploration Results, Exploration Targets, Mineral Resources and Ore Reserves" (JORC Code). Mr Thomas consents to the inclusion in this report of the matters based upon his information in the form and context in which it appears.

References in this report may have been made to certain ASX announcements, including Exploration Results and Mineral Resources. For full details, refer to said announcement on said date. The Company is not aware of any new information or data that materially affects this information. Other than as specified in this announcement and other mentioned announcements, the Company confirms that it is not aware of any new information or data that materially affects the information included in the original market announcement(s), and in the case of estimates of Mineral Resources, that all material assumptions and technical parameters underpinning the estimates in the relevant announcement continue to apply and have not materially changed other than as it relates to the content of this announcement. The Company confirms that the form and context in which the Competent Person's findings are presented have not been materially modified from the original announcement.



ASX:TCG



@TuracoGold



/company/turaco-gold/



turacogold.com.au

# Corporate Snapshot | ASX:TCG



Share Price (14 Feb 2025)  
**\$0.365**



Shares on  
**900M**



Market Capitalisation  
**A\$328M**



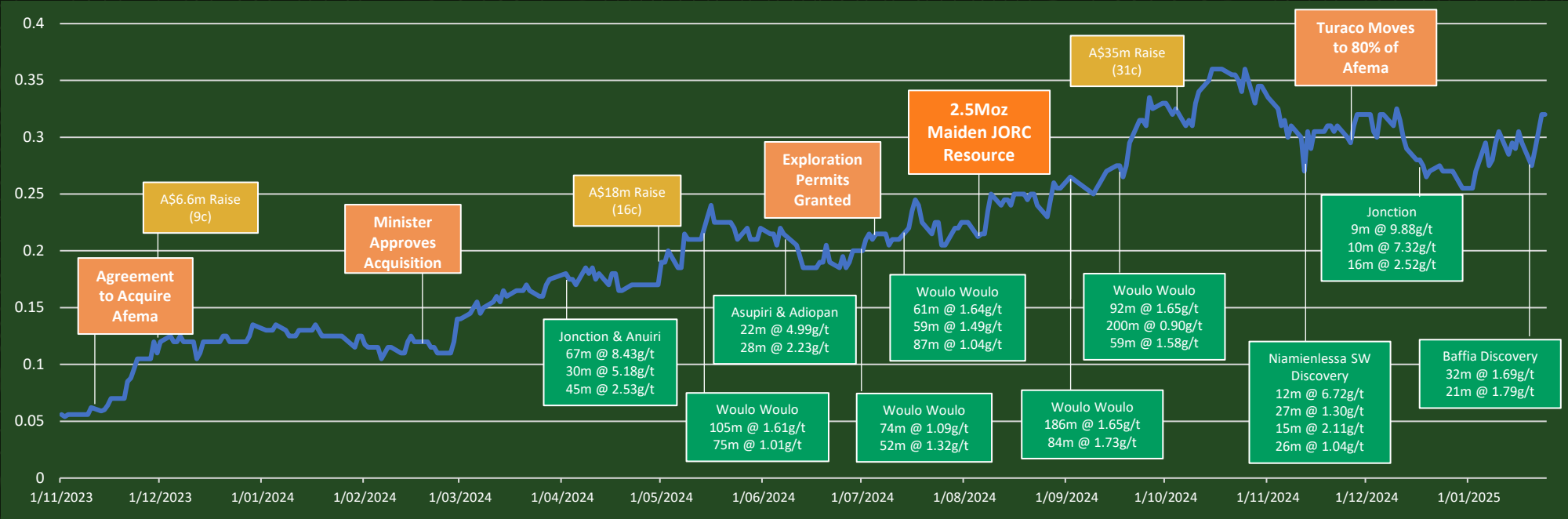
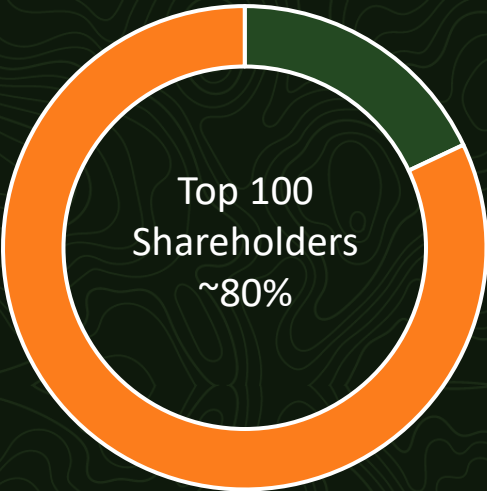
Investments & Receivable<sup>1</sup>  
**A\$5M**



Cash (31 Dec 2024)  
**A\$33M**



Enterprise Value  
**A\$290M**



<sup>1</sup> 5M shares in Many Peaks Minerals Ltd, 0.3M shares in Awale Resources Ltd, \$1.2M of shares in Aurum Resources Ltd (payable for Boundiali South permit) and potential US\$1.5M receivable from Fortuna Mining Corp for residual 20% interest in Tongon North Project





# Board and Management | Successful Track Record



**Justin Tremain**  
Managing Director

- Experienced resources company director and executive
- Previously Managing Director of Exore Resources Ltd (Cote d'Ivoire) until its takeover by Perseus Mining Ltd
- Founding Managing Director of Renaissance Minerals Ltd (Cambodia) until its takeover by Emerald Resources, where he served as Executive Director



**John Fitzgerald**  
Non-Exec Chair

- Highly experienced mining financier having held senior positions with various Investment Banks
- Non-Executive Director of Northern Star Resources Ltd, Chair of Medallion Metals Ltd and former Chair of Exore Resources Ltd



**Alan Campbell**  
Non-Exec Director

- +30 yrs in global exploration and mining for major and junior companies
- Former Managing Director of Papillon Resources Ltd (Fekola discovery) which was acquired by B2 Gold Ltd



**Bruce Mowat**  
Non-Exec Director

- +30 yrs of exploration experience
- Resolute Mining Ltd's General Manager - Exploration
- Extensive West African exploration and mine operating experience



**Ben Larkin**  
Chief Financial Officer & Co Secretary

- +15 yrs experience as a corporate & finance professional
- Recent experience in the development and operation of gold mines
- Previously CFO & Co Sec at Medallion Metals Limited, Carnaby Resources Limited and the formerly ASX-Listed Beadell Resources Limited.



**Rob Seed**  
Chief Operating Officer

- +25yrs experience in Africa, Southeast Asia and Australia
- Responsible for multiple economic gold and base metal discoveries
- Led resource delineation and feasibilities on several West Africa gold projects (Burkina Faso and Guinea) over +10 years



**Elliot Grant**  
Chief Geologist

- 15yrs experience in West Africa exploration (Burkina Faso and Cote d'Ivoire).
- Previously Exploration Manager at Exore Resources Ltd, Teranga Gold Corporation and Gryphon Minerals Ltd



**Daouda Zombo (Zombo)**  
Exploration Manager

- Geologist, Masters Econ. Geology (Quebec)
- +15 years' experience in West Africa
- Previously Gryphon Minerals, Teranga Gold Corporation and Endeavour Mining



# The Right Address | The Country

## Cote d'Ivoire

Without question, **Cote d'Ivoire is a premier jurisdiction of West Africa**

- **West African gold production more than doubled in past 10 years to 17Moz pa** (Aust. 10Moz pa)
- **West African discovery scale & grade** | 67Moz at 1.5g/t discovered in last 10yrs from 15 discoveries (Aust. 19Moz at 0.9g/t)
  - **Cote d'Ivoire the key contributor** to this growth & discoveries with **production up +500% in past 10yrs to ~1.8Moz pa**
  - Remains significantly **underexplored** despite **>34% of West Africa's Birimian greenstone**
- **Nine operating gold mines** (*Barrick, Endeavour, Perseus, Fortuna, Tietto, Allied Gold*) and three at DFS/development decision (*Montage Gold, Centamin, Endeavour*)
- **Rapid permitting & low capex per ounce** | Endeavour's *Lafique Gold Mine* 4 years from drilling to construction
- **Excellent infrastructure** | HV transmission lines, hydro power, bitumen roads, skilled local workforce
- **Highest rated sovereign in sub-Sahara Africa** (S&P Global Rating BB-/positive)
- **Economic growth 6.5% pa in 2024** (up from 6.2% pa). Second largest economy in West Africa with **highest GDP per capita**
- **West African leading standout in 2023 Frasers Investment Attractiveness Index** (4<sup>th</sup> highest ranking in Africa)
- +12 years political stability and **low security risk**

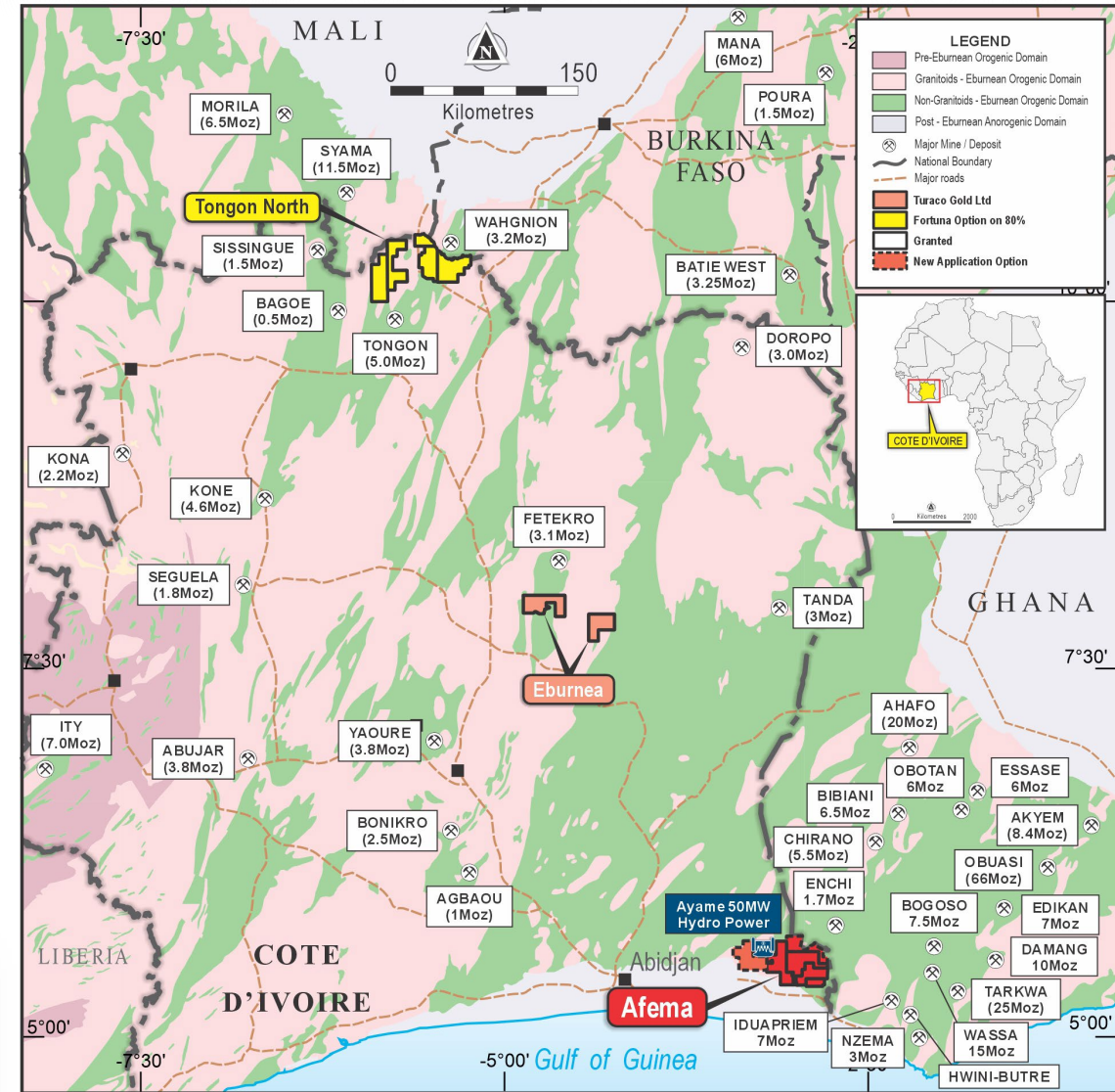




# Afema Gold Project

## World Class Terrain

- **80% ownership** (refer ASX announcement 27 November 2024)
  - Decision to Mine - minority 20% partner to contribute or convert to 1.5% NSR
- **Total project area expanded to >1,600km<sup>2</sup>** in southeast Cote d'Ivoire
  - **Central granted Mining Permit covering 227km<sup>2</sup>**
  - **Three newly granted contiguous Exploration Permits covering 812km<sup>2</sup>**
  - Two additional exploration permit applications
- Mining Permit valid to Dec 2033 (20-year renewal thereafter to Dec 2053)
  - **Supported by a Mining Convention**
- Exploration Permits 12-years of tenure (June 2036)
- **West Africa's best infrastructure**
  - 120km drive from Abidjan and port facilities | **2-hour drive**
  - **New highway** traverses southern project area connecting Cote d'Ivoire to Ghana
  - Adjacent to major Cote d'Ivoire **50MW hydropower** scheme with HV transmission lines

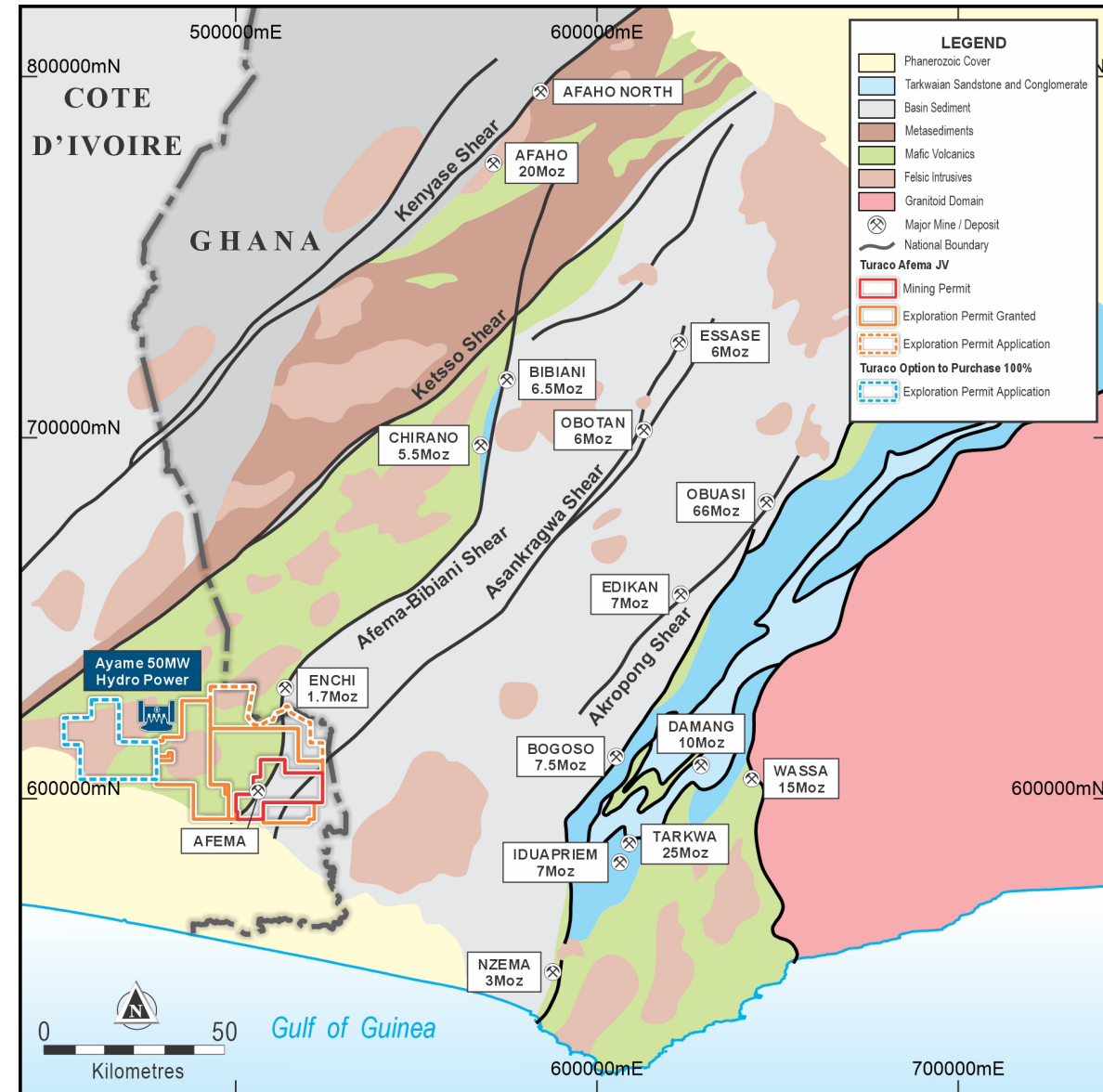




# The Right Address | Afema Project Location

## Convergence of World Class Gold Belts

- Covers the extension and convergence of **two of Ghana's most prolific gold belts into southeast Cote d'Ivoire**
  - Afema-Bibani-Chirano shear marking eastern margin of Sefwi belt
  - Asankragwa shear within the Kumasi basin
- Deposits along eastern margin extension of the Sefwi-Bibiani Belt host to deposits such as Bibiani (6.5Moz) and Chirano (5.5Moz)
- Asankragwa shear host to deposits such as Obotan (6Moz) and Essase (6Moz)



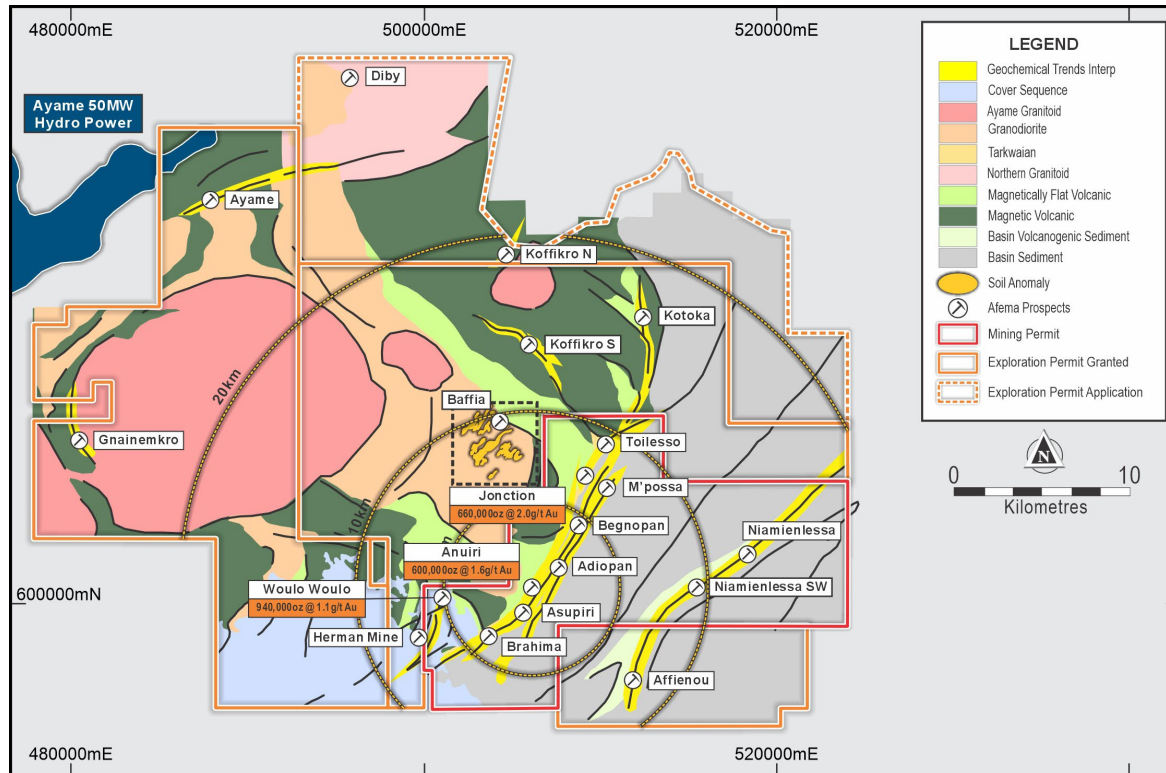


# The Right Address | Afema Project Geology

## Maiden 2.5Moz JORC Resource and Set to Grow

Deposit	Tonnes	Gold Grade	Ounces
<b>Woulo Woulo</b> (0.5g/t cut-off)	42.6Mt	0.9g/t	1,250,000
<b>Jonction</b> (0.7g/t cut-off)	10.1Mt	2.0g/t	660,000
<b>Anuiri</b> (0.7g/t cut-off)	11.6Mt	1.6g/t	600,000
<b>Total</b>			<b>2,520,000</b>

(figures may not add up due to appropriate rounding)



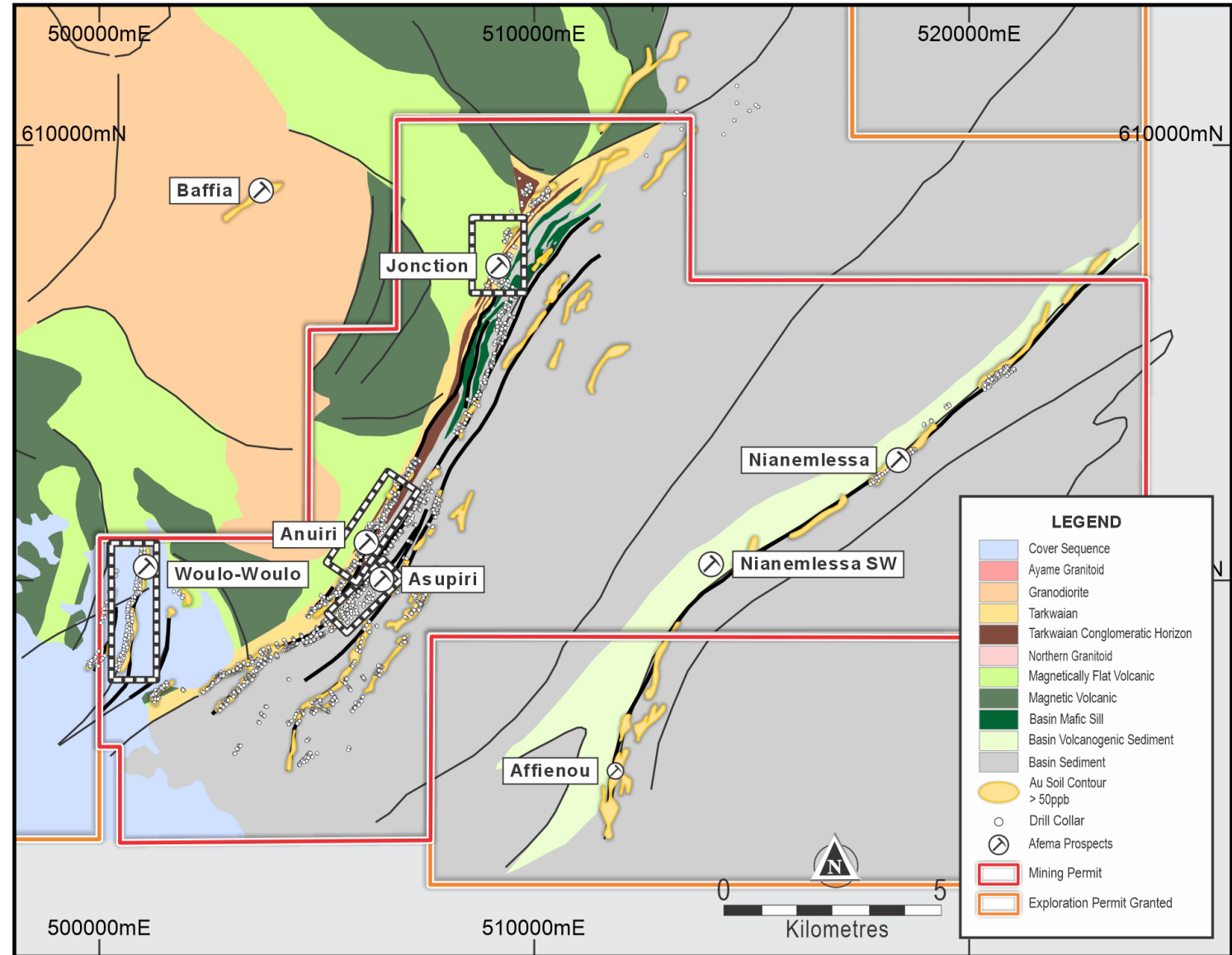
- Maiden JORC Resource less 6 months from Turaco's acquisition at a cost (incl. total acquisition costs) of less than US\$7 per attributable ounce
- **60% of JORC Resource reported in the 'Indicated' category**
- Located entirely within the **granted Mining Permit**
- **Only 3 deposits included | Excludes several drilled deposits along the +25km Afema Shear (+250,000m drilling)**
- **All deposits remain OPEN** in every direction
- Compelling exploration
  - **Multiple mineralised structures**, each extending 5-25kms, untested with drilling
  - No known drilling within Exploration Permits | extensive geochemical sampling (+25,000 samples) with **several well-defined, large-scale drill targets**
    - Northern extensions of the Afema Shear (Toileso-Kotoka-Koffikro)
    - Niamienlessa-Affienou Shear
    - Extensions and repetitions of the Woulo Woulo splay
    - Intrusive contact anomalies (Bafia, Ayame)

<sup>1</sup> Refer ASX announcements dated 27 August 2024

# Afema Shear

## Multi Million Ounce Gold System

- **+25kms of the eastern margin of the extension of the Sefwi Gold Belt in Ghana** - a truly worldclass gold belt
- Multiple structures across a **2-3km width**
- ~250,000m of historical drilling along the Afema Shear **confirming a multi-million ounce gold system**
- Fifteen known drilled deposits along the Afema Shear of which only two have been tested with deeper drilling
  - **Jonction**
  - **Anuiri**
- Recent **new shallow discovery at Woulo Woulo** on a north-south splay off the Afema Shear
- Extensive mineralisation along **Asupiri** structure (not included in JORC MRE)
- **+5kms of untested prospective geology between Jonction and Anuiri** with high tenor gold-in-soils
- **Systematic metallurgical test work** program across each deposit by Turaco



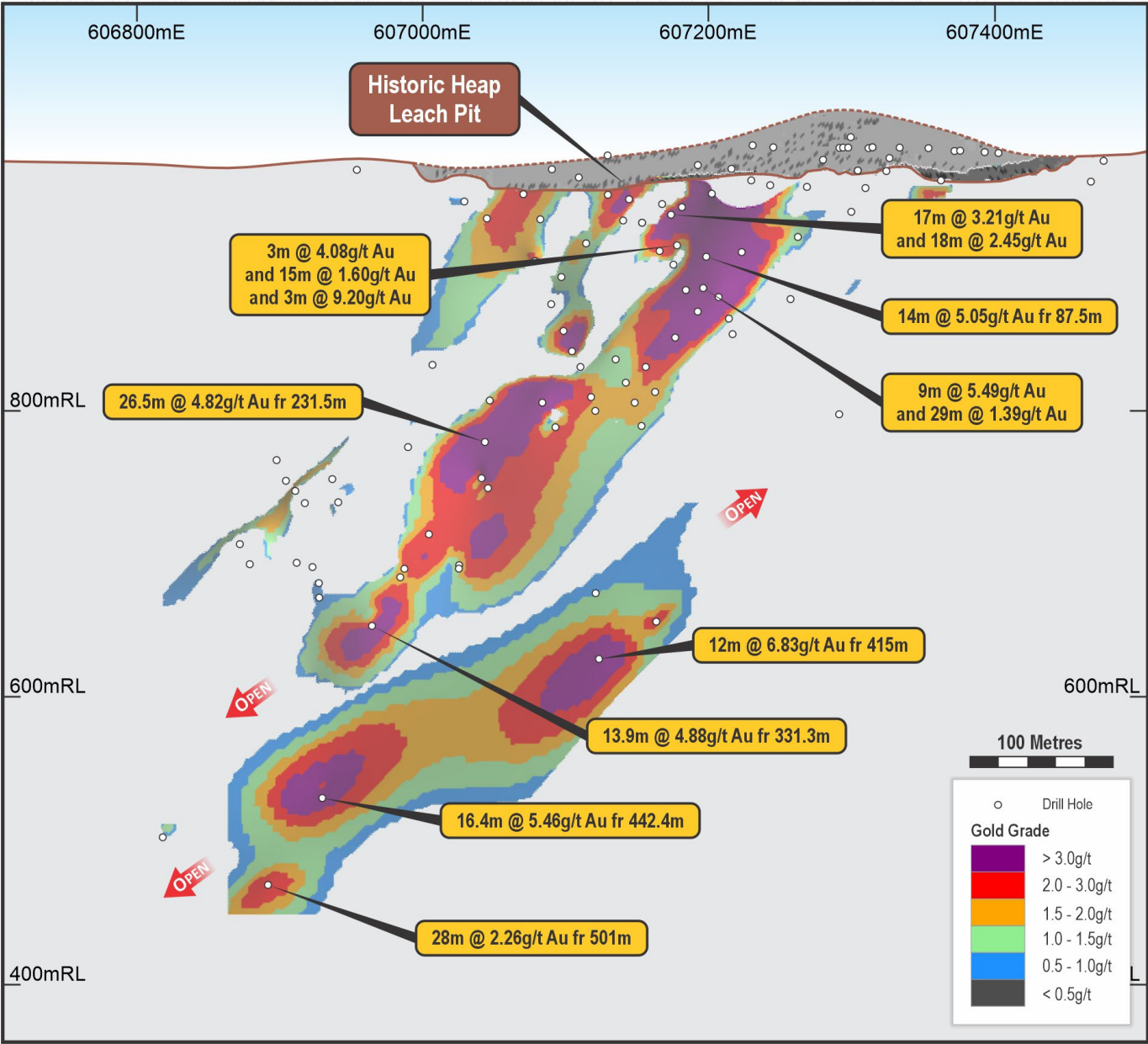


# Afema Shear | Junction Deposit

Junction JORC 2012 Mineral Resource Estimate <sup>1</sup>				
Cut-Off	Classification	Tonnes	Gold Grade	Ounces
0.5g/t	Indicated	5.9Mt	2.0g/t	390,000
	Inferred	5.8Mt	1.6g/t	310,000
	<b>Total</b>	<b>11.7Mt</b>	<b>1.8g/t</b>	<b>700,000</b>
0.7g/t	Indicated	5.2Mt	2.2g/t	370,000
	Inferred	4.9Mt	1.8g/t	290,000
	<b>Total</b>	<b>10.1Mt</b>	<b>2.0g/t</b>	<b>660,000</b>

(figures may not add up due to appropriate rounding)

- Located at the northern end of the Afema Shear
- ~24,000m drilling (22,000m DD / 2,000m RC) on 30-40m spacing
- **Continuous high-grade shoot up to 40m width**, plunging to the south with **490,000 ounces at 3.0g/t** at lower cut-off of 1.5g/t<sup>1</sup>
- **OPEN** in all directions
- Potential additional high-grade shoots along strike to the north and south
- **85% total gold recovery** from fresh mineralisation through grind, sulphide flotation, concentrate UFG & cyanide leaching<sup>1</sup>
  - Very low 2.6% to 4.7% mass recovery to concentrate at >94% gold recovery
  - No ‘preg robbing’ carbon

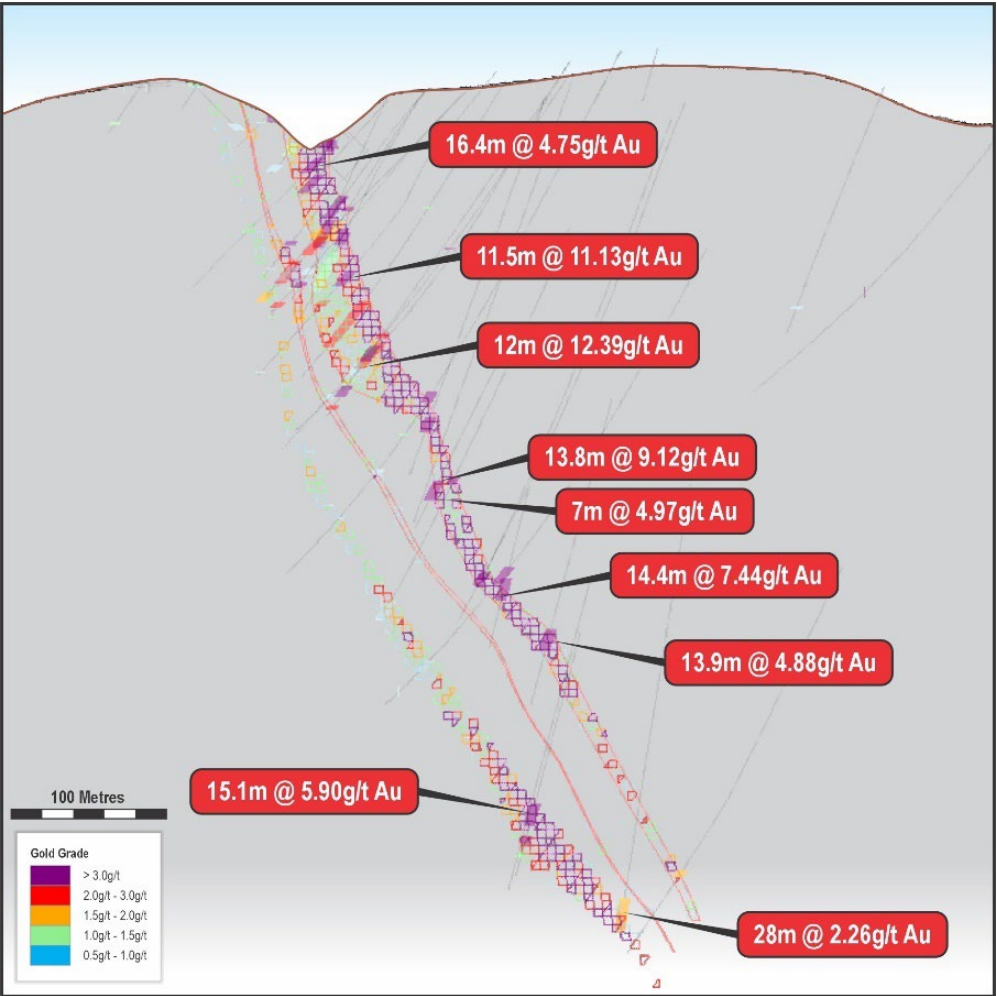


Junction Long Section (looking west showing southerly plunging high grade shoot)<sup>1</sup>

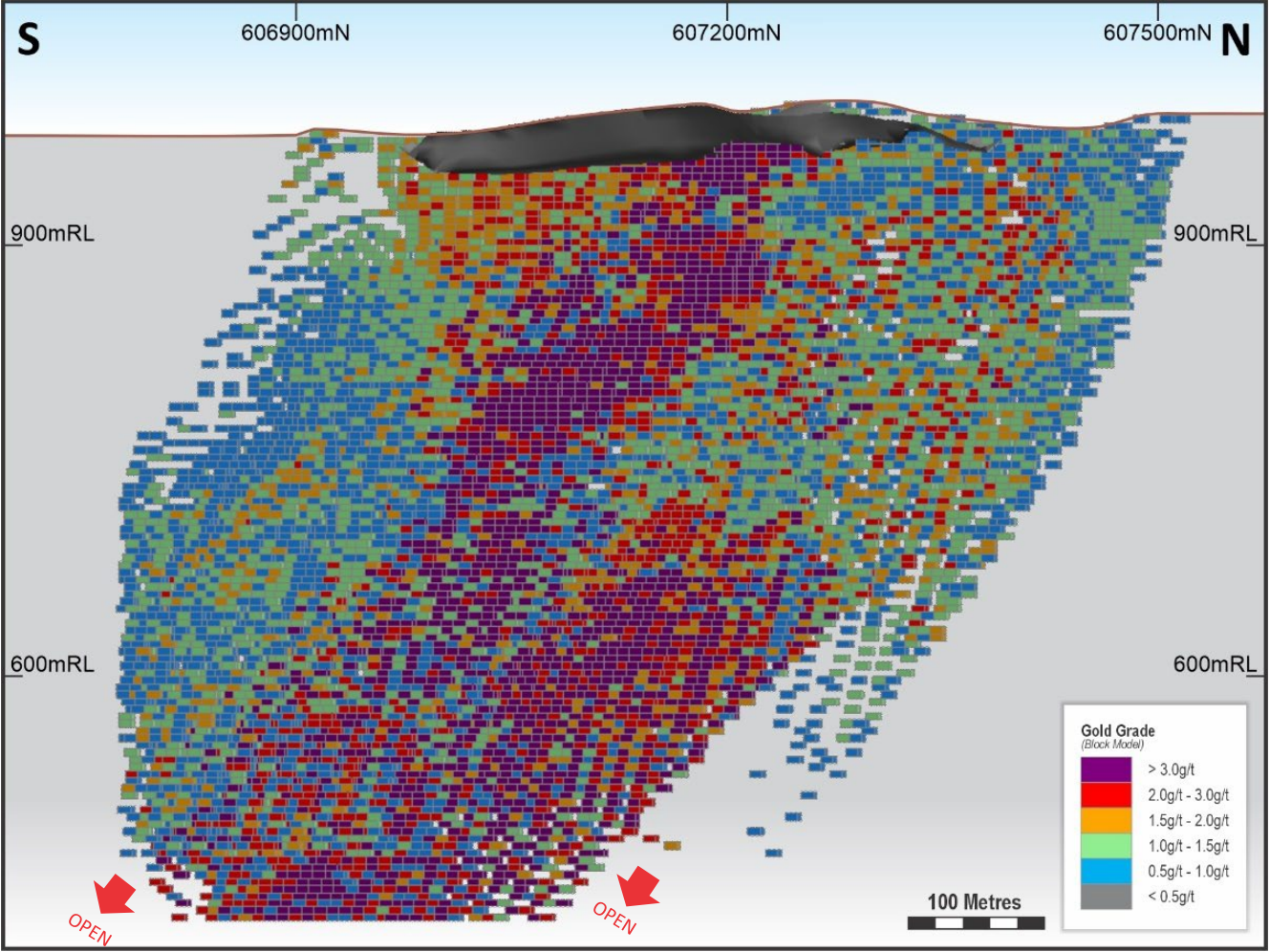
<sup>1</sup> Refer ASX announcements dated 21 November 2023, 17 April 2024 and 27 August 2024



# Afema Shear | Junction Deposit



Junction Cross Section (looking northeast)



Junction Long Section (looking west showing southerly plunging high grade shoot)

<sup>1</sup> Refer ASX announcements dated 21 November 2023 and 27 August 2024



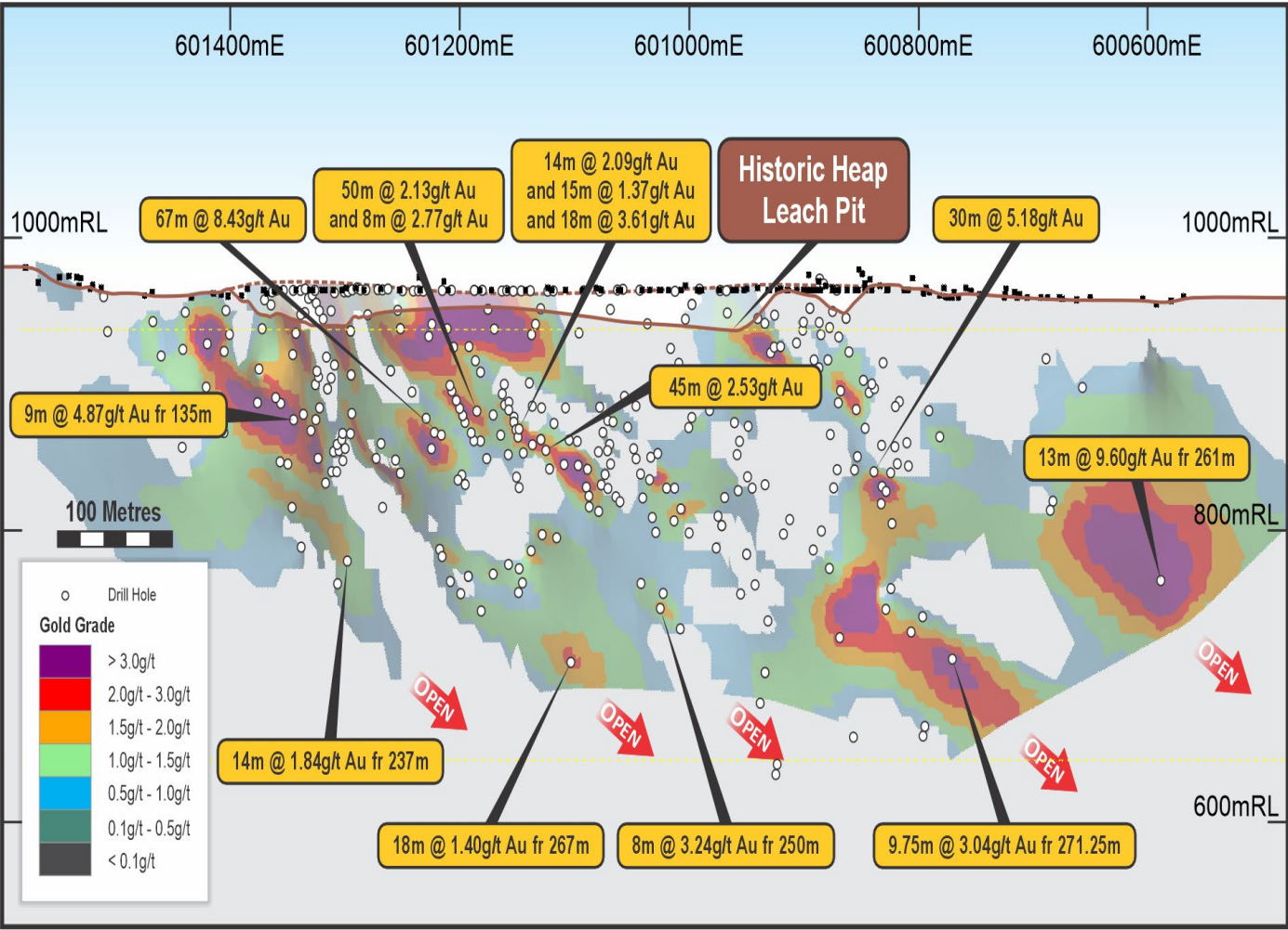


# Afema Shear | Anuiri Deposit

Anuiri JORC 2012 Mineral Resource Estimate <sup>1</sup>				
Cut-Off	Classification	Tonnes	Gold Grade	Ounces
0.5g/t	Indicated	7.2Mt	1.6g/t	360,000
	Inferred	7.1Mt	1.3g/t	290,000
	<b>Total</b>	<b>14.3Mt</b>	<b>1.4g/t</b>	<b>650,000</b>
0.7g/t	Indicated	5.9Mt	1.8g/t	340,000
	Inferred	5.7Mt	1.4g/t	260,000
	<b>Total</b>	<b>11.6Mt</b>	<b>1.6g/t</b>	<b>600,000</b>

(figures may not add up due to appropriate rounding)

- 6kms south of Jonction along the central portion of the Afema Shear
- ~57,000m drilling (47,000m DD / 10,000m RC) on 30-60m spacing
- Several southerly plunging high-grade shoots up to 35m in width
- 500m strike extent drilled to 200-250m depth
- **OPEN** in all directions
- Dominant sulphide pyrite, with minor arsenopyrite



Anuiri Long Section (looking east with southerly plunge)

<sup>1</sup> Refer ASX announcements dated 21 November 2023, 17 April 2024 and 27 August 2024



# Woulo Woulo

## Shallow New Discovery

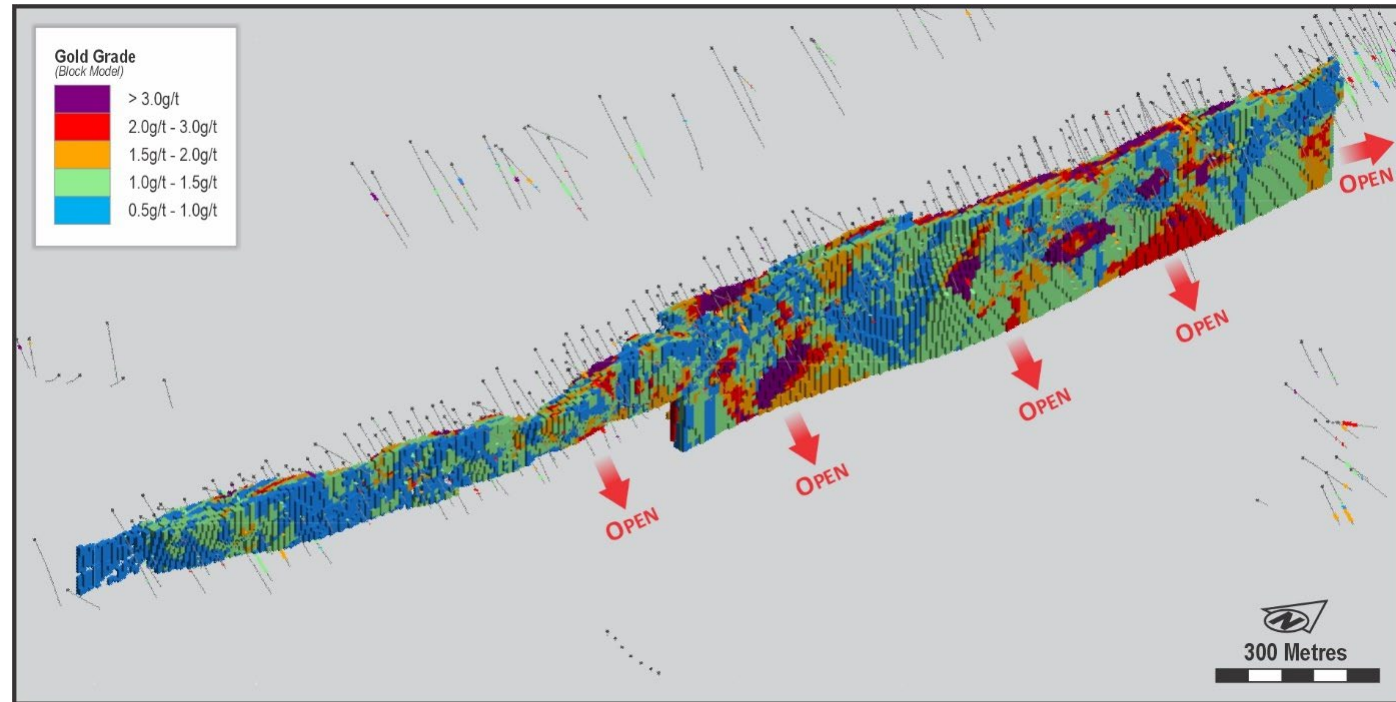
Woulo Woulo JORC 2012 Mineral Resource Estimate<sup>1</sup>

Cut-Off	Classification	Tonnes	Gold Grade	Ounces
0.5g/t	Indicated	27.4Mt	0.9g/t	800,000
	Inferred	15.2Mt	0.9g/t	450,000
	<b>Total</b>	<b>42.6Mt</b>	<b>0.9g/t</b>	<b>1,250,000</b>
0.7g/t	Indicated	17.1Mt	1.1g/t	610,000
	Inferred	9.1Mt	1.1g/t	330,000
	<b>Total</b>	<b>26.2Mt</b>	<b>1.1g/t</b>	<b>940,000</b>

(figures may not add up due to appropriate rounding)

- South 1.5km of strike untested at depth with high grades in top 100m
  - 66m @ 1.58g/t gold<sup>2</sup>
  - 58m @ 1.30g/t gold<sup>2</sup>
- **Open along strike with parallel structures** under shallow cover with artisanal mining along outcropping windows
- **Excellent metallurgical characteristics | free milling** across oxide/transitional/fresh mineralisation with gold recoveries **~94% oxide and ~90% fresh**
- **Rapid leach kinetics** | majority gold leaches within 4 hours | low cyanide consumption
- **70% of contained ounces in the top 200m**

- 5kms from Anuiri and 12kms from Jonction on a north-south splay off the Afema Shear
- ~40,000m drilling (34,000m DD / 6,000m RC) drilled on 40m sections
- **Large mineralised system OPEN at depth. Mineralisation widening and improving in grade at depth**
- **3kms of strike.** Southern 1.5km to 130m and north to 240m depth



<sup>1</sup> Refer ASX announcements dated 27 August 2024

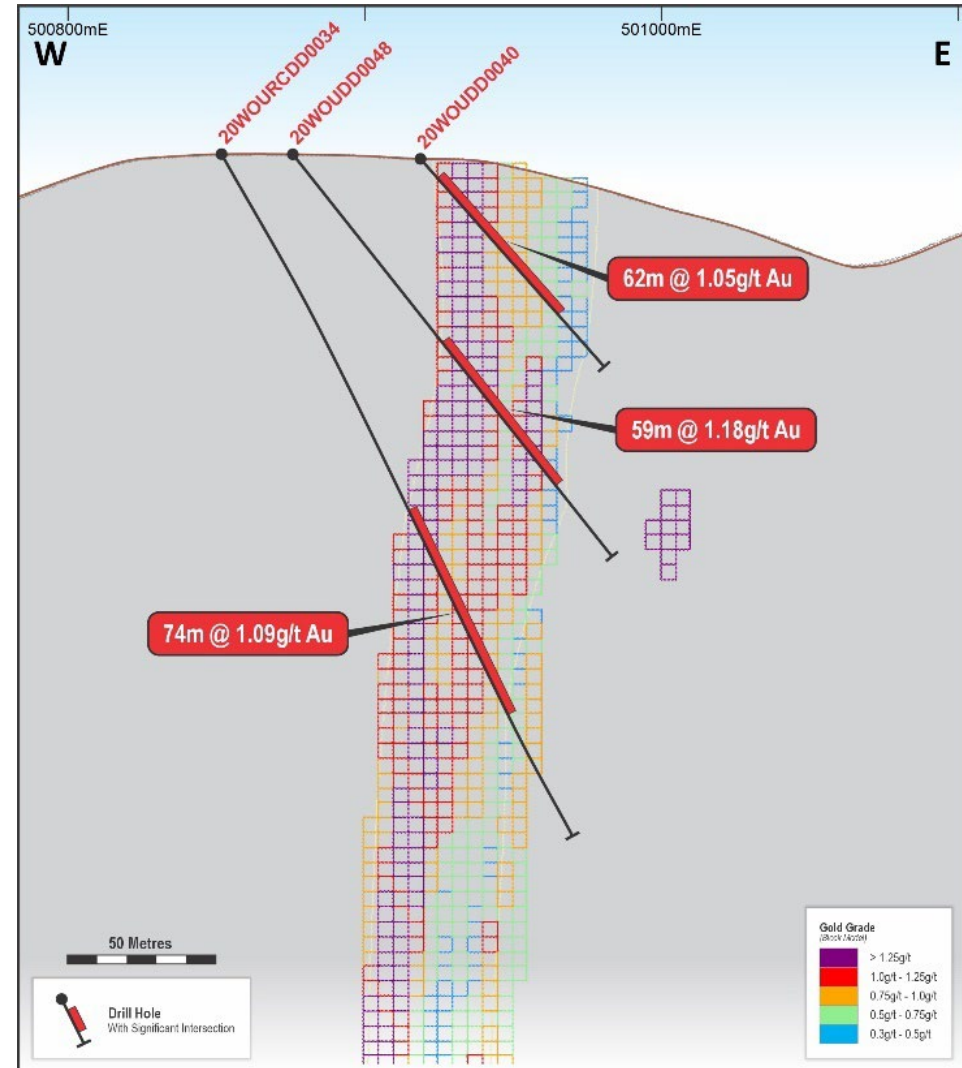
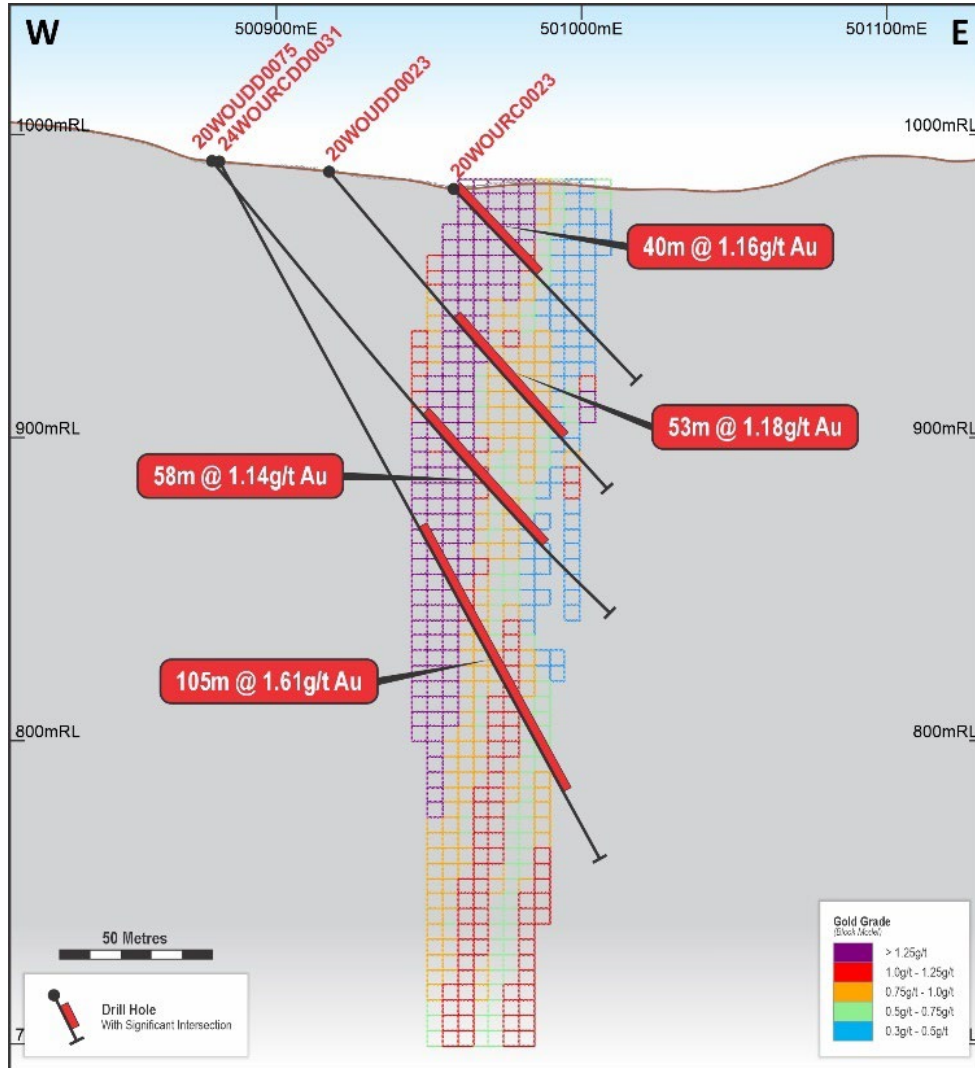
<sup>2</sup> Refer ASX announcement dated 21 November 2023



# Woulo Woulo

## Bulk and Consistent Mineralisation | Low Strip Mining

Excellent continuity of gold grades across width of mineralisation and along the almost 3kms of drilled strike



Refer ASX announcements dated 21 November 2023, 20 May 2024 and 19 June 2024

# Woulo Woulo

## Width and Continuity

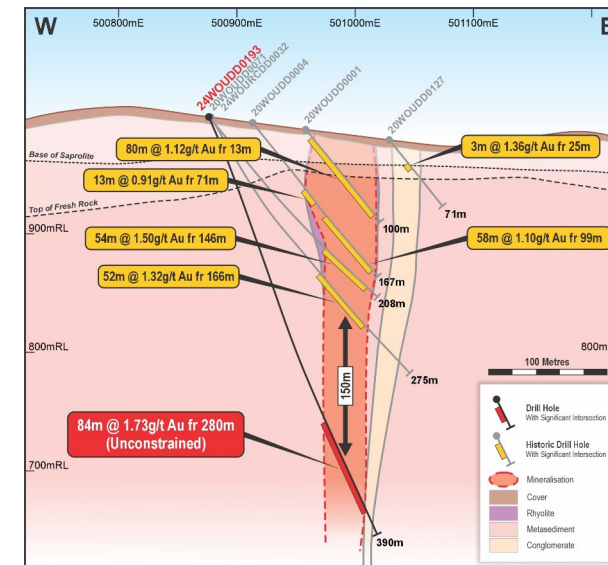
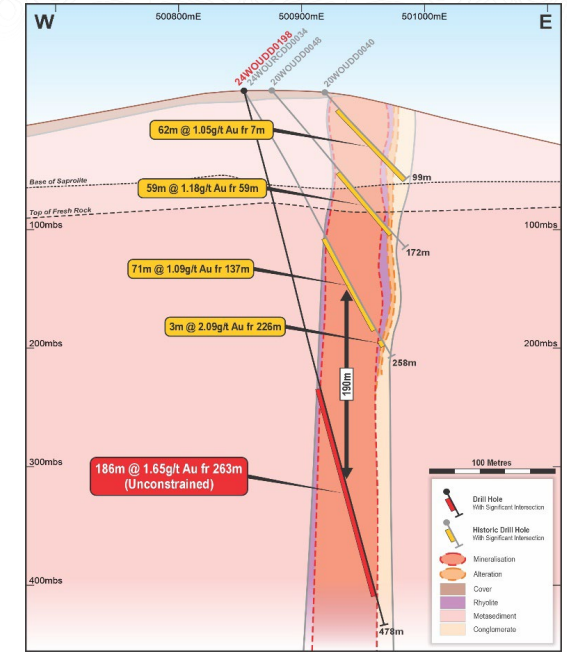
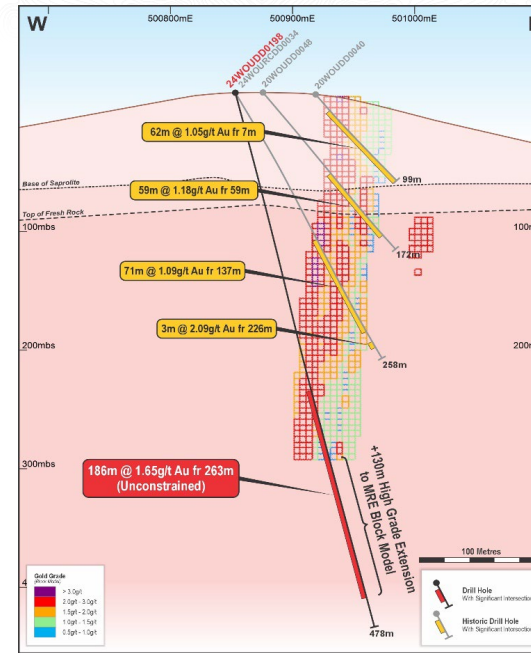
- Typical results include<sup>1</sup>:

- 105m @ 1.61g/t gold from 135m
- 66m @ 1.58g/t gold from 48m
- 59.5m @ 1.58g/t gold from 48.5m
- 83m @ 1.10g/t gold from 10m
- 40m @ 2.01g/t gold from 119m
- 45m @ 1.67g/t gold from 146m
- 75m @ 1.01g/t gold from 138m
- 87m @ 1.04g/t gold from 138m
- 61m @ 1.64g/t gold from 124m
- 82m @ 0.97g/t gold from 209m
- 58m @ 1.30g/t gold from 58m
- 72m @ 1.03g/t gold from 0m
- 67m @ 1.06g/t gold from 31m
- 58m @ 1.11g/t gold from 99m
- 59m @ 1.49g/t gold from 142m
- 74m @ 1.09g/t gold from 137m

- Recent results from step-out drilling outside JORC Resource include<sup>2</sup>:

- 186m @ 1.65g/t gold from 263m
- 84m @ 1.73g/t gold from 280m
- 47m @ 1.06g/t gold from 155m
- 33m @ 1.05g/t gold from 57m

- Gold grade is significantly higher at depth beneath JORC Resource
- Deeper holes are 360m apart along strike and extend mineralisation 150-190m below JORC Resource
- Clear demonstration of **substantial growth for Woulo Woulo at a higher gold grade**

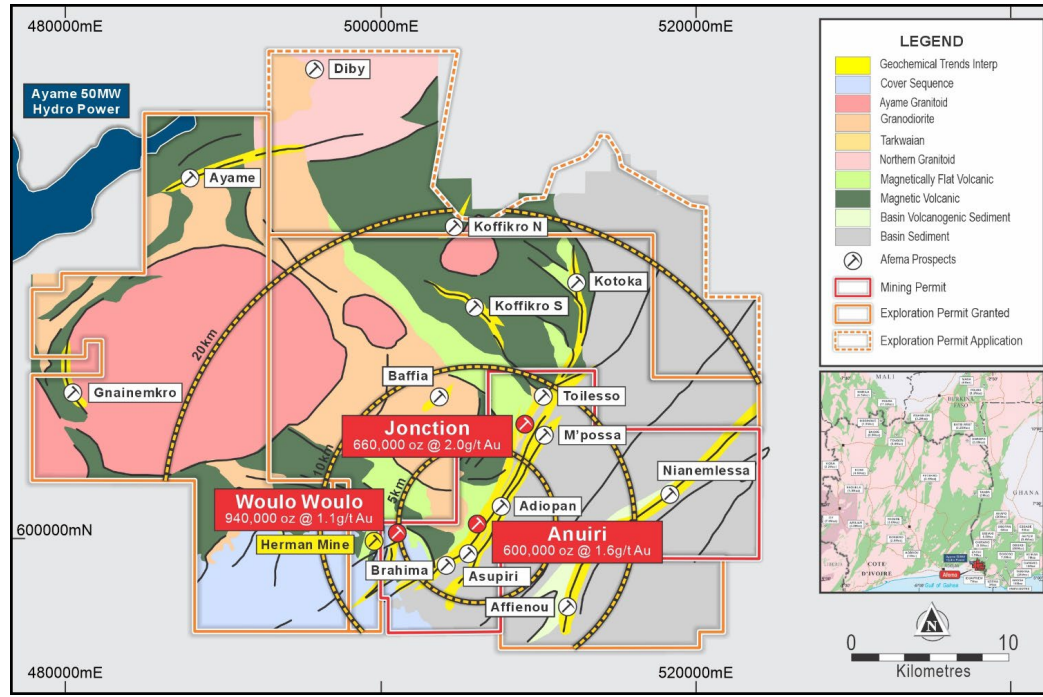


<sup>1</sup> Refer ASX announcements dated 21 November 2023 and 17 April 2024

<sup>2</sup> Refer ASX announcements dated 2 September 2024

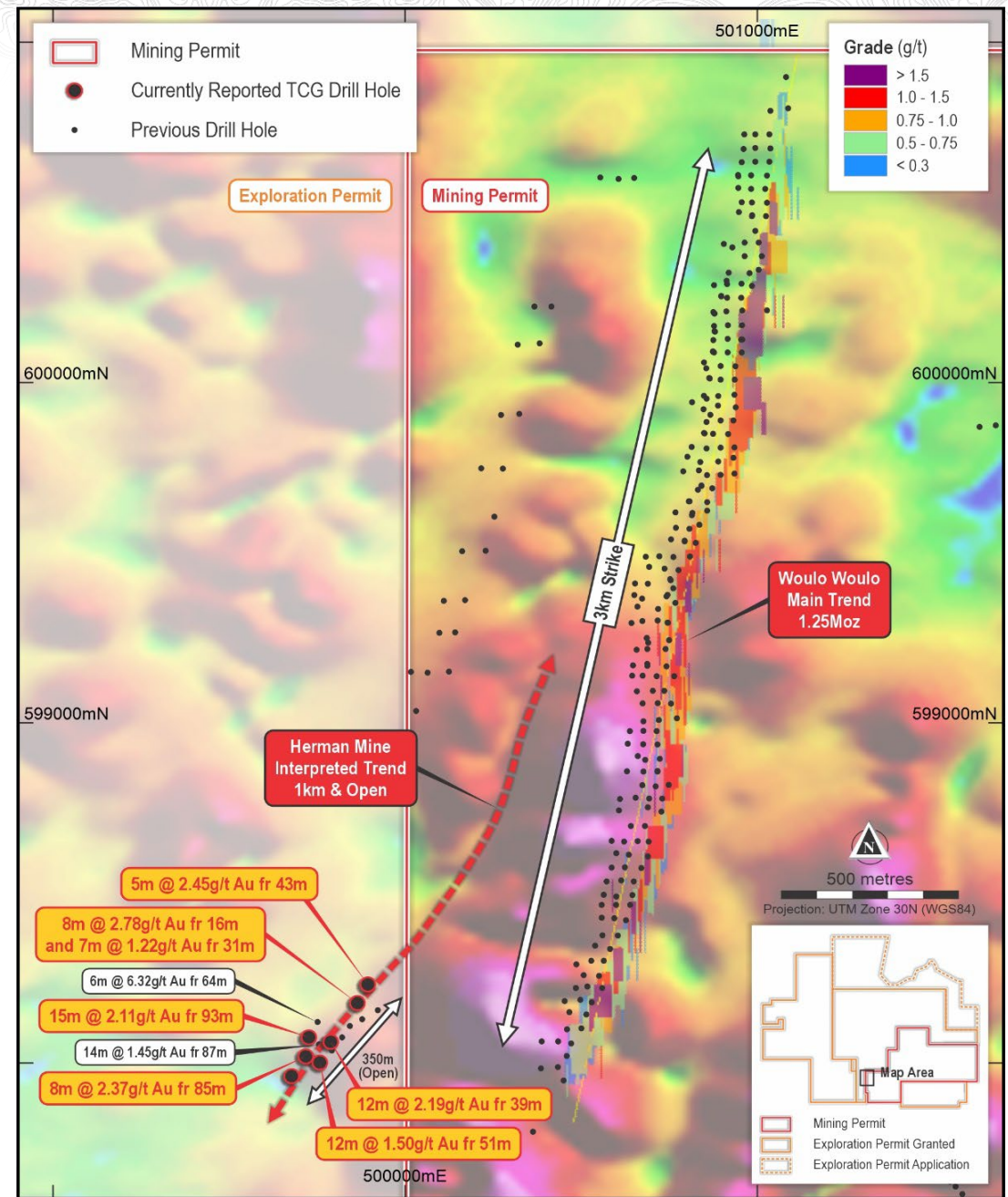


# Woulo Woulo Parallel Structures



- Mineralised trends sub-parallel to the 1.25Moz Woulo Woulo deposit
- 'Herman Mine' | recent drilling over 300m strike which remains 'OPEN' over 1km
- **Identical alteration to the Woulo Woulo main trend**
- Recent results include<sup>1</sup>:
  - 6m @ 6.32g/t gold from 64m
  - 15m @ 2.11g/t gold from 93m
  - 12m @ 2.19g/t gold from 39m
  - 33m @ 1.05g/t gold from 57m

<sup>1</sup> Refer ASX announcement dated 14 October 2024





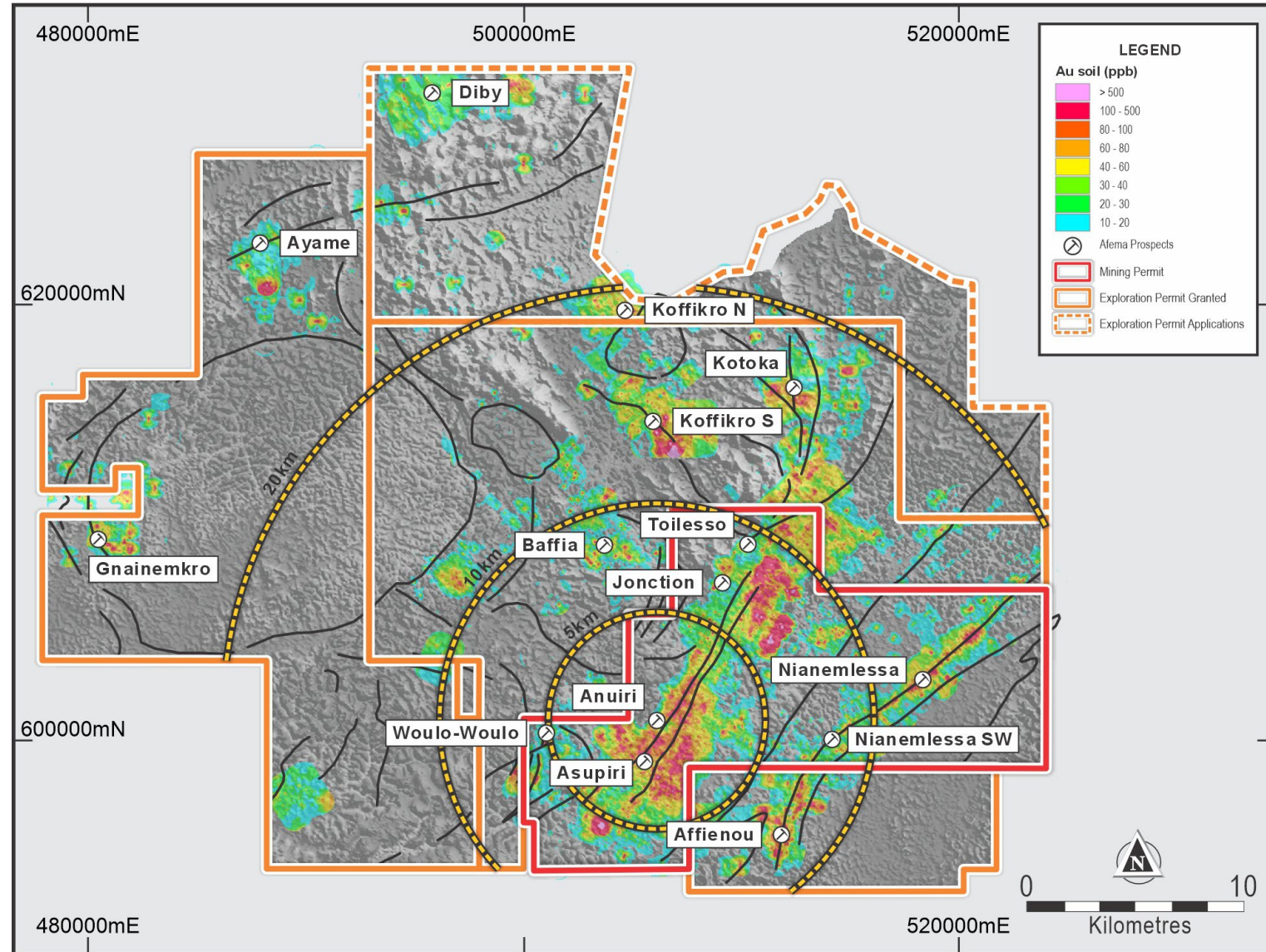
# The Right Address | Afema Project Scale

## Target Rich Environment

- Severely underexplored outside the Afema Shear with several large anomalies in promising geological positions

**No known drilling beyond the Mining Permit**

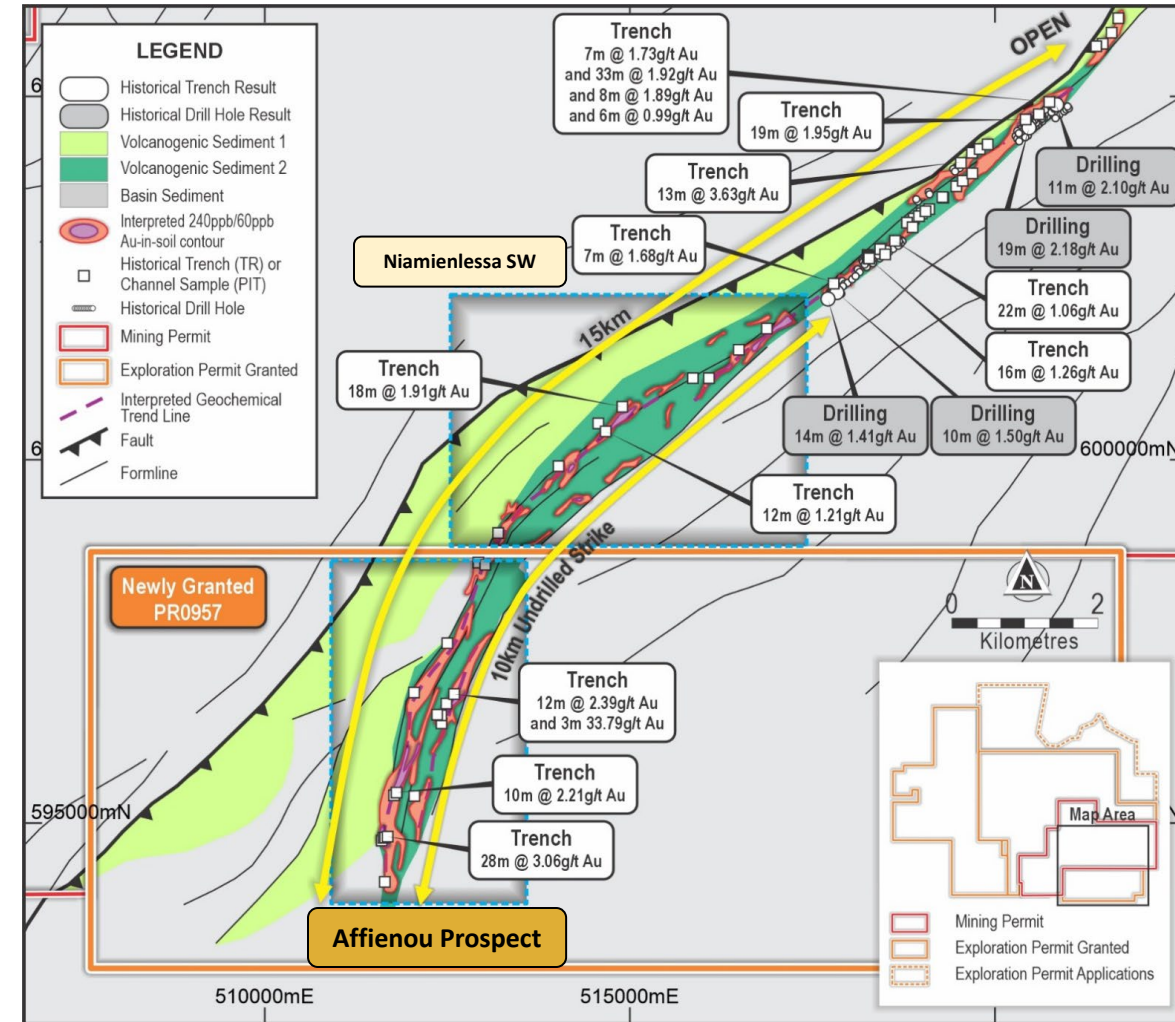
- Extensive artisanal mining activity** across entire project area
- Substantial portion of the project area is unsampled
- Multiple undrilled, high tenor (+100ppb gold) anomalies**, each extending over several kilometres, within 20km project radius
- Strong correlation of gold-in-soils to drilled high grade gold mineralisation





# Niamienlessa Shear

- Channel sampling and trenching returning **28m @ 3.06g/t gold, 12m @ 2.39g/t gold and 10m @ 2.21g/t gold<sup>1</sup>**
- Extensive recent **artisanal mining site exploiting ~50m wide saprolite zone of mineralisation** with sampling of pit walls returning **36m @ 4.08g/t gold**

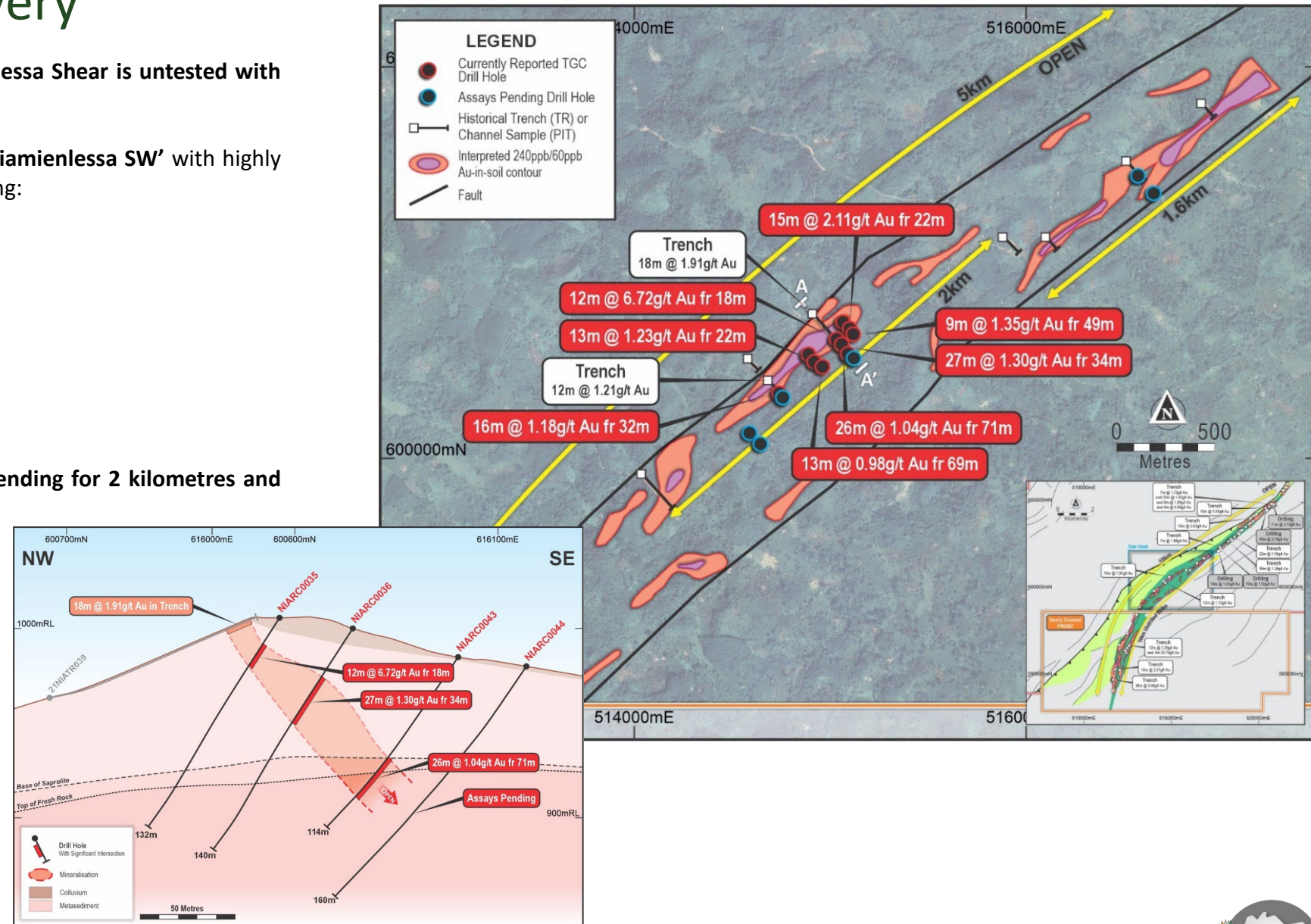


<sup>1</sup> Refer ASX announcement dated 21 November 2023



# Niamienlessa SW Discovery

- Southern +10km strike of the anomalous Niamienlessa Shear is untested with drilling
- Maiden drilling has returned a **new discovery** at 'Niamienlessa SW' with highly encouraging initial results from just 10 holes including:
  - 12m @ 6.72g/t gold from 18m
  - 27m @ 1.30g/t gold from 34m
  - 15m @ 2.11g/t gold from 22m
  - 26m @ 1.04g/t gold from 71m
  - 13m @ 1.23g/t gold from 22m
- Drilling was testing two sub-parallel anomalies extending for 2 kilometres and 1.6 kilometres each
- **Predominately oxide** mineralisation
- Located **within 10km of the 2.52Moz MRE**

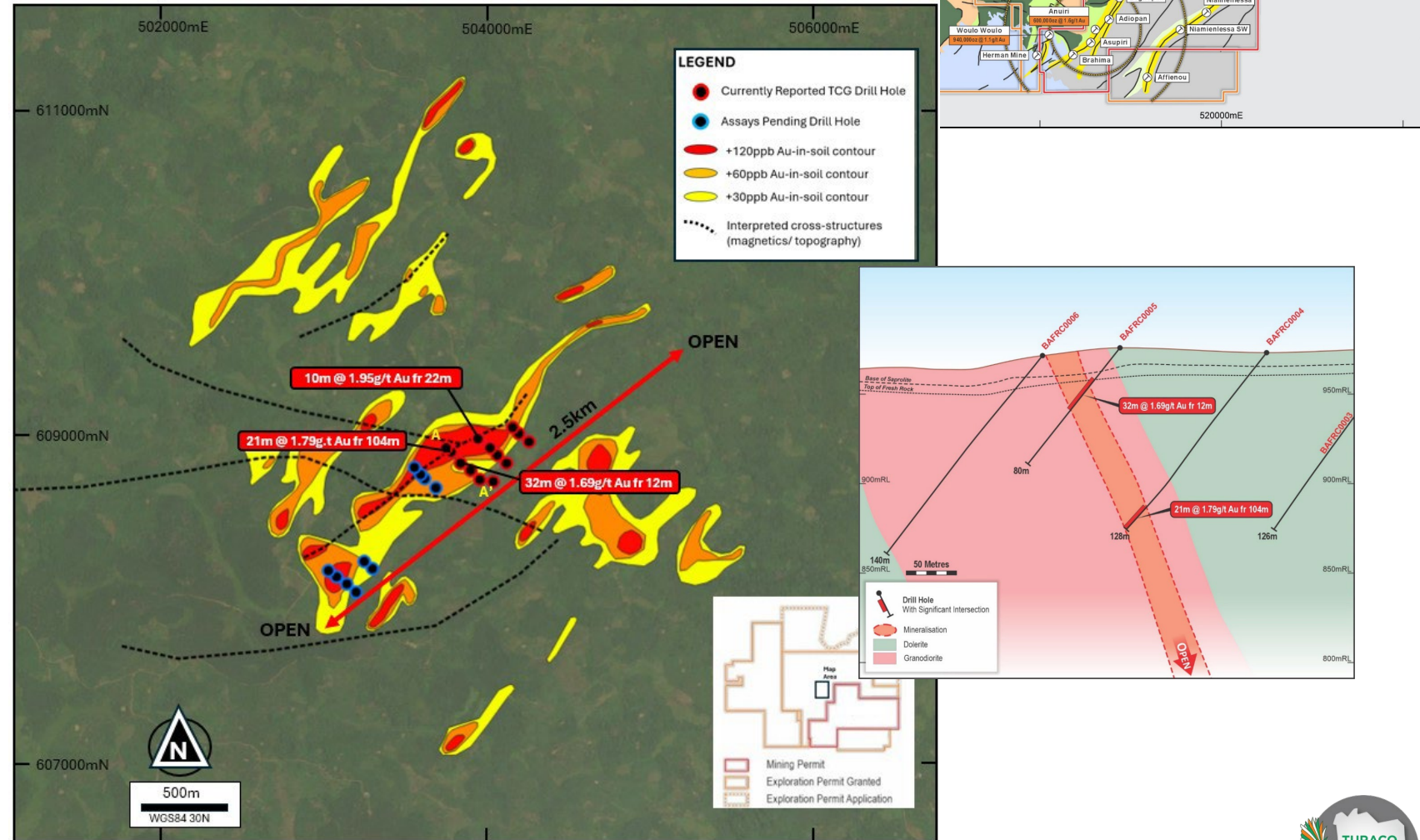


<sup>1</sup> Refer ASX announcement dated 13 November 2024



# Baffia Discovery

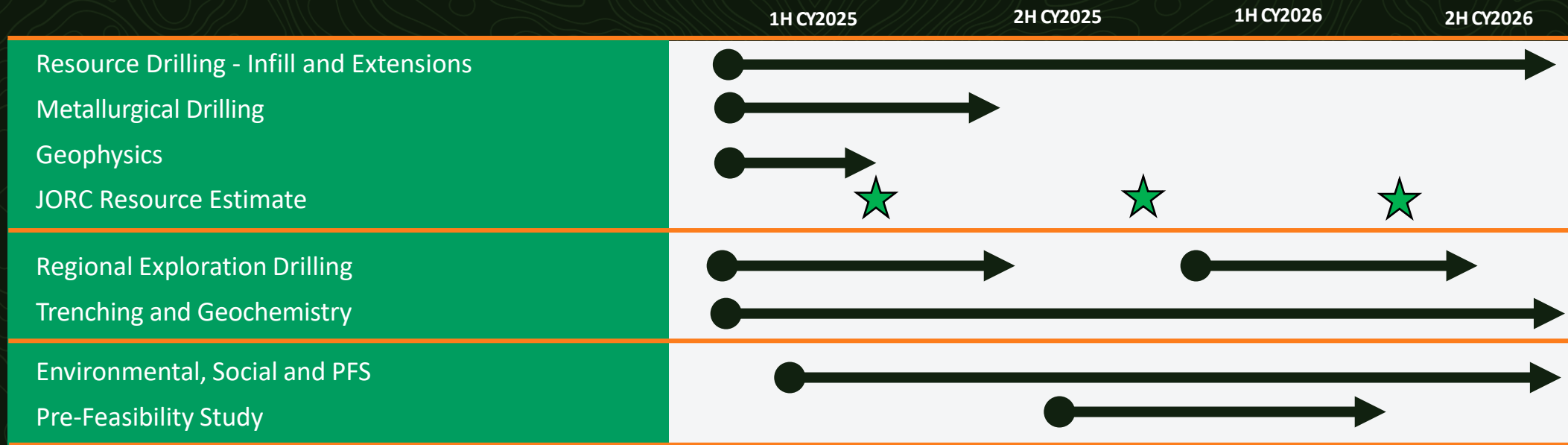
- Located 3 kilometres to the northwest of the Jonction deposit
- Baffia geochemical **anomaly covers an area of ~3.5 kilometres by ~2.5 kilometres** located over a granodiorite adjacent to the regional significant 'Ayame' granitoid
- Maiden wide-spaced, shallow drilling returned a broad zone of gold mineralisation with results from just 13 holes including:
  - 32m @ 1.69g/t gold from 12m
  - 21m @ 1.79g/t gold from 104m
  - 10m @ 1.95g/t gold from 22m
- Mineralisation is hosted in a granodiorite intercalated with dolerite and remains open in all direction



<sup>1</sup> Refer ASX announcement dated 23 January 2025

# Milestones & Objectives

- **2.5Moz Maiden JORC Mineral Resource estimate**
  - ✓ Total cost of <US\$7/oz attributable to Turaco
  - ✓ Target updated JORC resource 1Q/2Q 2025
- **Aggressive exploration**
  - ✓ Three rigs operating around the clock
  - ✓ 15-20,000m RC/DD drilling per quarter
- **Immediate resource growth potential**
- **Well-funded with A\$33M cash**
- **Tier One jurisdiction of West Africa**
- **Proven management track record**





# Thank You



ASX:TCG



@TuracoGold



/company/turaco-gold/



turacogold.com.au