

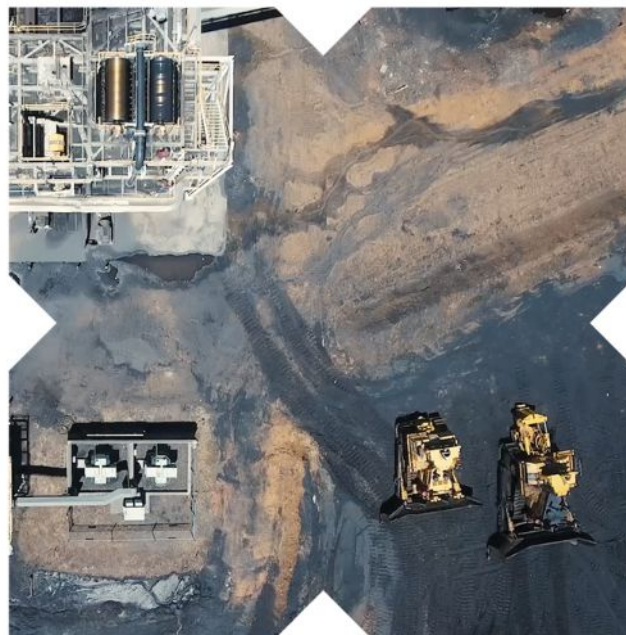
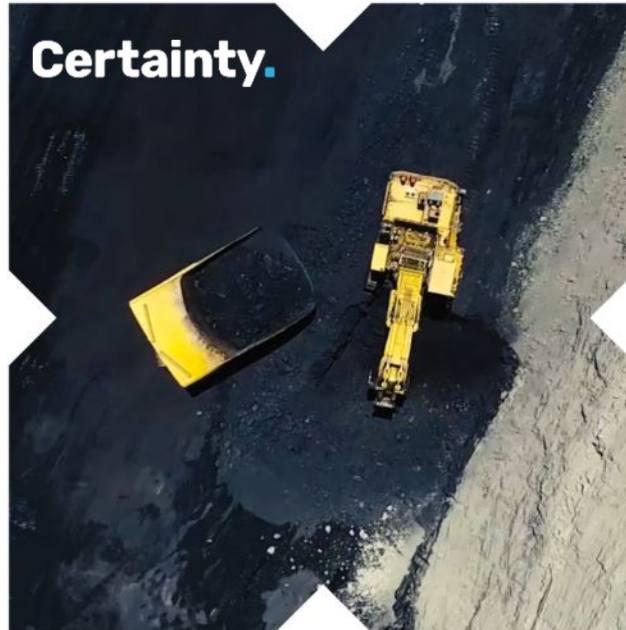
stanmorecoal

Certainty.

WILSONS:
RAPID INSIGHTS
CONFERENCE

**Expanding Production
to Deliver
Shareholder Returns**

20 NOVEMBER 2018



Important information

stanmorecoal

This document has been prepared by Stanmore Coal Limited ("Stanmore Coal") for the purpose of providing a company and technical overview to interested analysts/investors. None of Stanmore Coal, nor any of its related bodies corporate, their respective directors, partners, employees or advisers or any other person ("Relevant Parties") makes any representations or warranty to, or takes responsibility for, the accuracy, reliability or completeness of the information contained in this document, to the recipient of this document ("Recipient"), and nothing contained in it is, or may be relied upon as, a promise or representation, whether as to the past or future.

The information in this document does not purport to be complete nor does it contain all the information that would be required in a disclosure statement or prospectus prepared in accordance with the Corporations Act 2001 (Commonwealth). It should be read in conjunction with Stanmore's other periodic and continuous disclosure announcements lodged with the Australian Securities Exchange, which are available at www.asx.com.au.

This document is not a recommendation to acquire Stanmore Coal shares and has been prepared without taking into account the objectives, financial situation or needs of individuals. Before making an investment decision prospective investors should consider the appropriateness of the information having regard to their own objectives, financial situation

and needs and seek appropriate advice, including financial, legal and taxation advice appropriate to their jurisdiction. Except to the extent prohibited by law, the Relevant Parties disclaim all liability that may otherwise arise due to any of this information being inaccurate or incomplete. By obtaining this document, the Recipient releases the Relevant Parties from liability to the Recipient for any loss or damage that it may suffer or incur arising directly or indirectly out of or in connection with any use of or reliance on any of this information, whether such liability arises in contract, tort (including negligence) or otherwise.

This document contains certain "forward-looking statements". The words "forecast", "estimate", "like", "anticipate", "project", "opinion", "should", "could", "may", "target" and other similar expressions are intended to identify forward looking statements. Indications of, and guidance on, future earnings and financial position and performance are also forward-looking statements. You are cautioned not to place undue reliance on forward looking statements.

Although due care and attention has been used in the preparation of forward looking statements, such statements, opinions and estimates are based on assumptions and contingencies that are subject to change without notice, as are statements about market and industry trends, which are based on interpretations of current market conditions. Forward looking statements

including projections, guidance on future earnings and estimates are provided as a general guide only and should not be relied upon as an indication or guarantee of future performance.

Recipients of the document must make their own independent investigations, consideration and evaluation. By accepting this document, the Recipient agrees that if it proceeds further with its investigations, consideration or evaluation of investing in the company it will make and rely solely upon its own investigations and inquiries and will not in any way rely upon this document.

This document is not and should not be considered to form any offer or an invitation to acquire Stanmore Coal shares or any other financial products, and neither this document nor any of its contents will form the basis of any contract or commitment. In particular, this document does not constitute any part of any offer to sell, or the solicitation of an offer to buy, any securities in the United States or to, or for the account or benefit of any "US person" as defined in Regulation S under the US Securities Act of 1993 ("Securities Act"). Stanmore Coal shares have not been, and will not be, registered under the Securities Act or the securities laws of any state or other jurisdiction of the United States, and may not be offered or sold in the United States or to any US person without being so registered or pursuant to an exemption from registration.

Stanmore Coal Overview The right path to value

stanmorecoal



Independent coal company

Positioned in right commodity at the right time of the cycle



Isaac Plains expansion operational with demonstrated performance

Validation that the resource, the equipment and the plan is right



Isaac Plains Complex represents the Company's platform asset

Cost structures targeted with the right CHPP feed volumes from capital 'light' open cut and underground expansions



Multiple acquisition targets and internal projects on which Stanmore can capitalise

Replicate the 'hub' approach focusing on reliability and creating value where others can't or won't

ASX CODE

SMR

SHARE PRICE

A\$0.915¹

SHARES

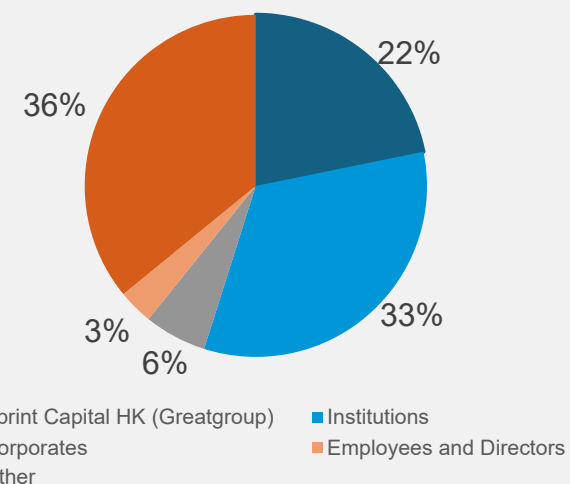
251,800,978

MARKET CAP

\$230m¹

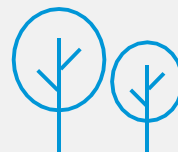
1. AS AT 12 NOV '18

SHARE OWNERSHIP





Full year **production** guidance for FY19 of 2.0Mt product



Environmental rehabilitation of ~150Ha planned in FY19



Development of Isaac Plains East ramping-up with two pits operational by November 2018



Operations supported by additional long-term port capacity to match infrastructure capacity at Isaac Plains



Growth through acquisition of Isaac Downs, providing Stanmore with an extra 10 years of production

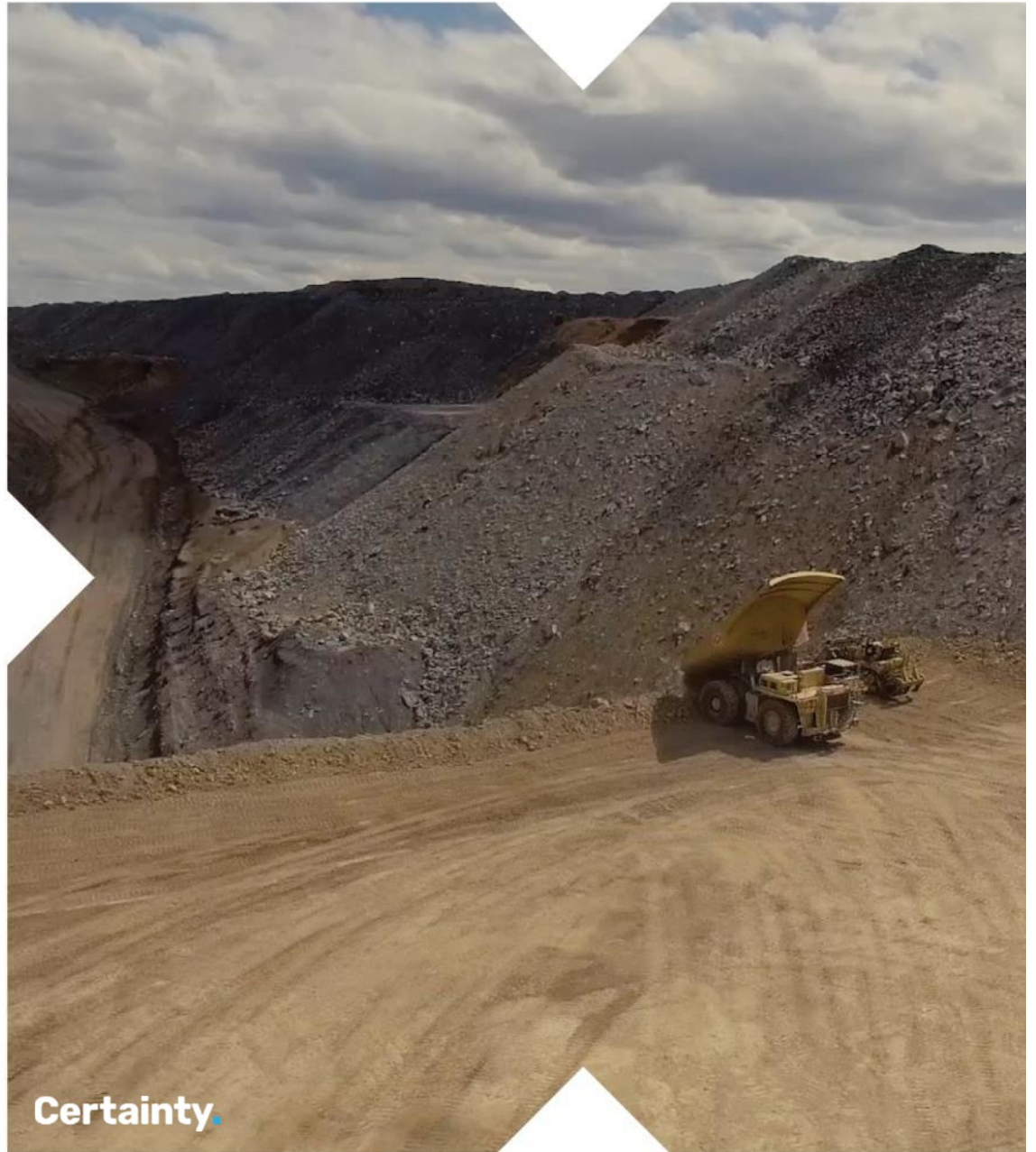


Maiden dividend of 2 cents per share payable November 2018

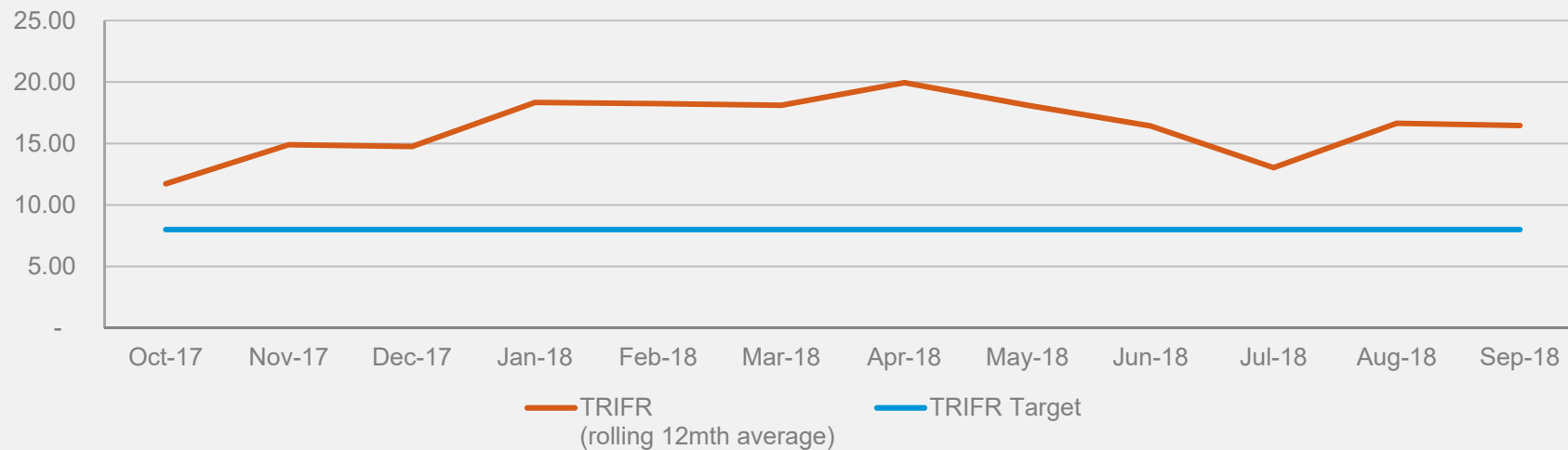
Safety

stanmorecoal

Certainty.



Driving for certainty of no fatalities and individual safety performance



- Significant resources committed to both fatal risk systems, personal safety and leadership
- Total Recordable Injury Frequency Rate (TRIFR) of 16.5 was above the Queensland Coal Industry (Surface Coal) TRIFR of 11 at September 2018

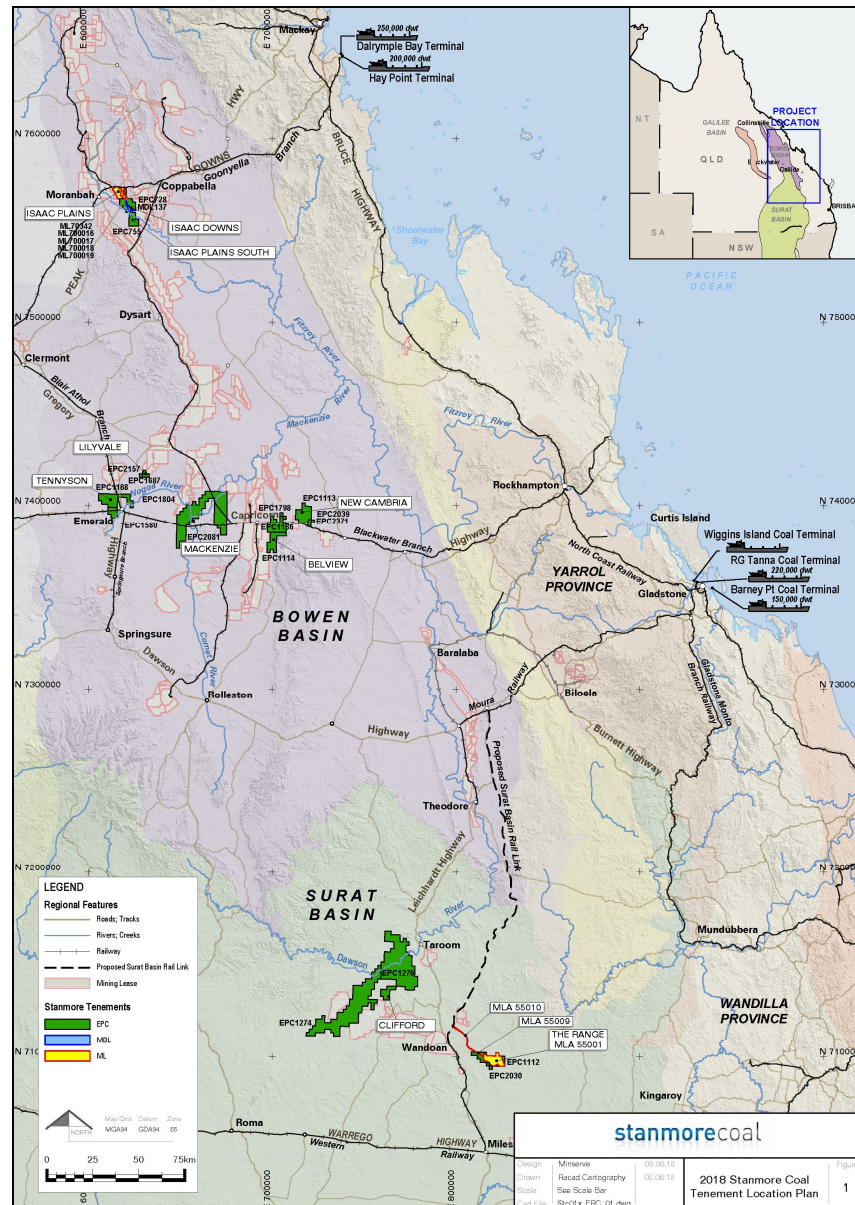
Operations

stanmorecoal

Certainty.



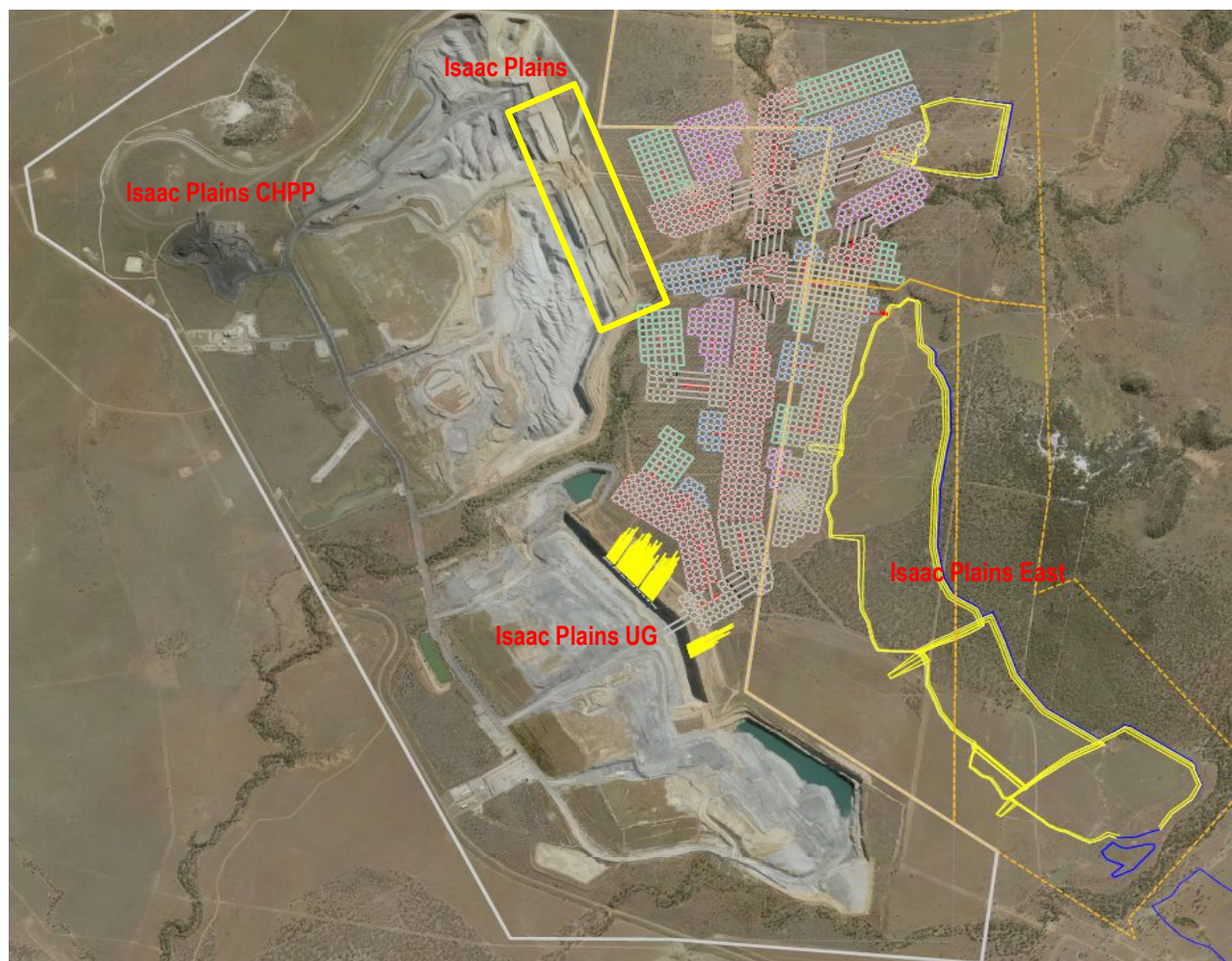
Region



Isaac Plains Complex Logistics

- 100% export product
- Goonyella Branch to DBCT
- 172km to DBCT
- DBCT Port capacity 2.4mtpa

Isaac Plains Complex



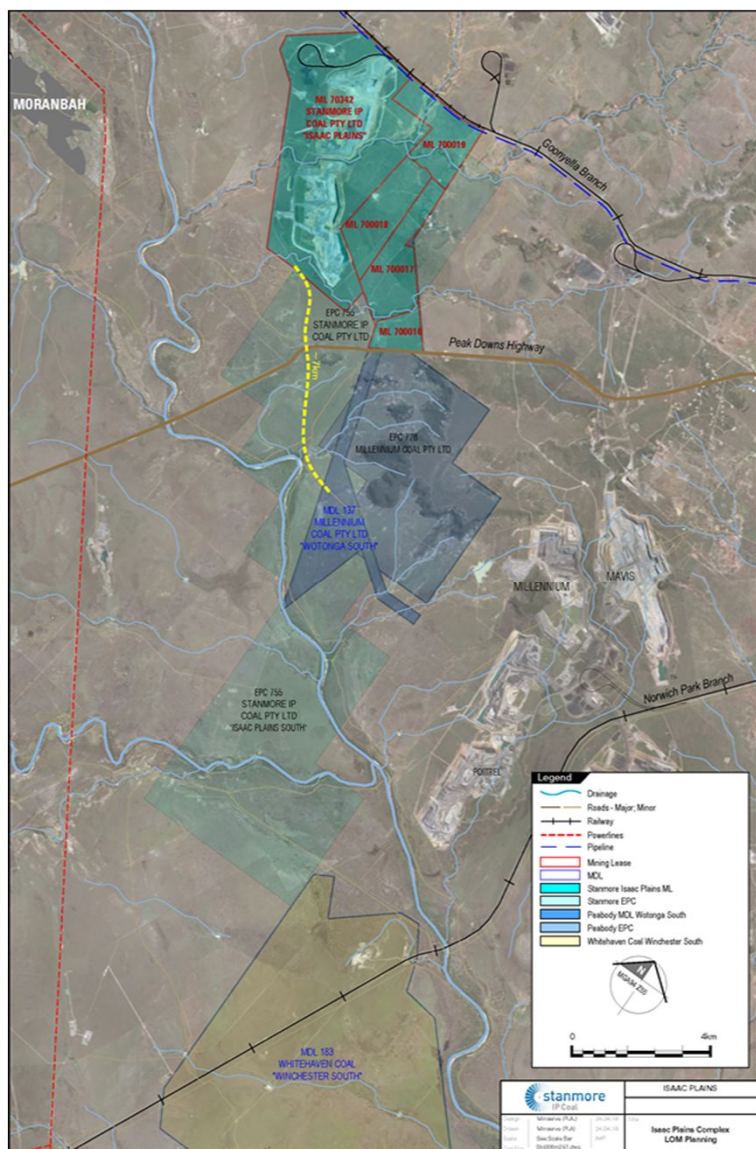


Isaac Plains Mine - final strip



Isaac Plains East – Pit 4 Strip 1

Our Neighbours



Isaac Downs (previously Wotonga South)

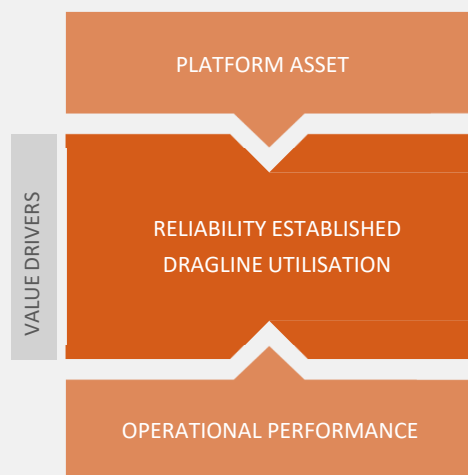
- 10 kilometres south of the existing coal handling and processing plant (CHPP) at Isaac Plains.
- The deposit is expected to support an Isaac Plains Complex mine life in excess of 15 years
- Capability to produce semi-hard coking coal, a mid-vol PCI product, as well as a range of semi-soft/weak coking coals.

Isaac Plains Underground

- The project progressed from PFS to BFS during FY18
- The BFS is materially complete allowing the Company to make an investment decision during FY19.
- Maiden JORC reserves were declared on 28 May 2018, with 12.9Mt (Probable) and Marketable reserves of 9.4Mt.

Implementation of the strategy
'on the ground'

■ 2018

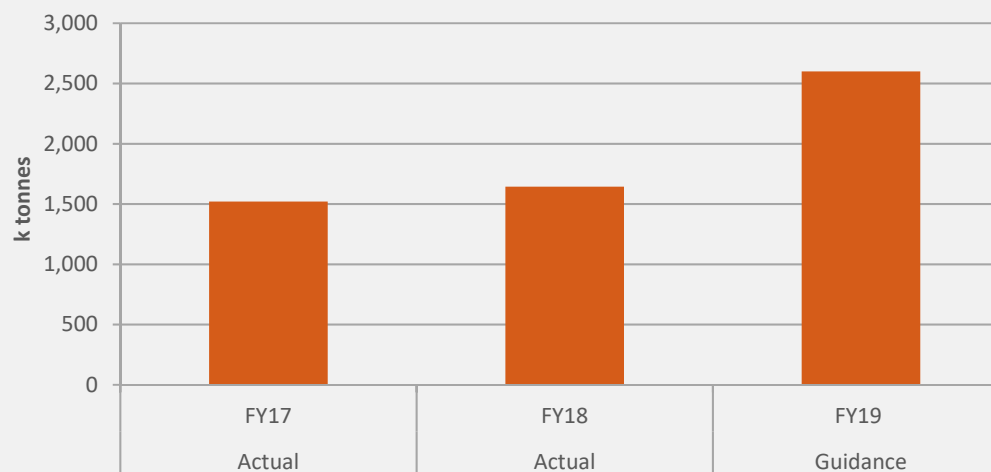


CURRENT POSITION - SCORECARD

RIGHT PLATFORM AT THE RIGHT TIME IN CYCLE	✓
RIGHT COMMODITY	✓
RIGHT SIZED TEAM	✓
RELIABILITY AND REPEATABILITY OF RESULTS ACHIEVED	✓
CASH GENERATIVE	✓

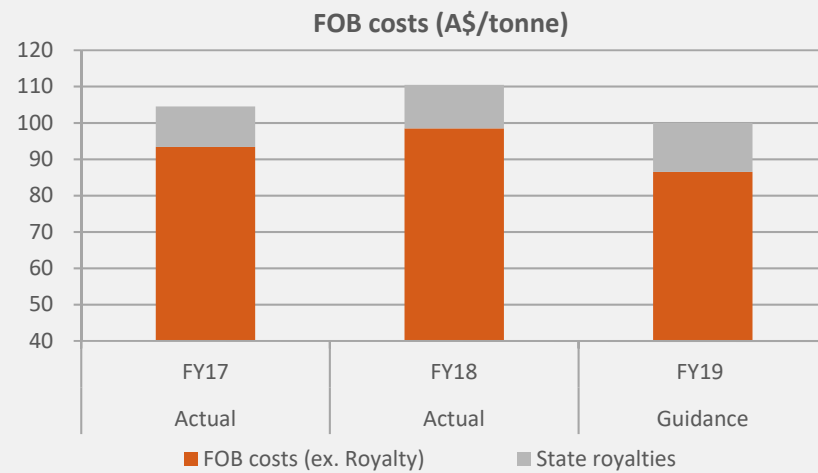
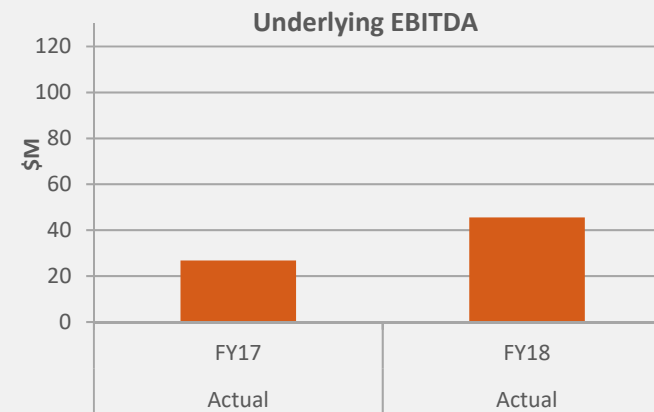
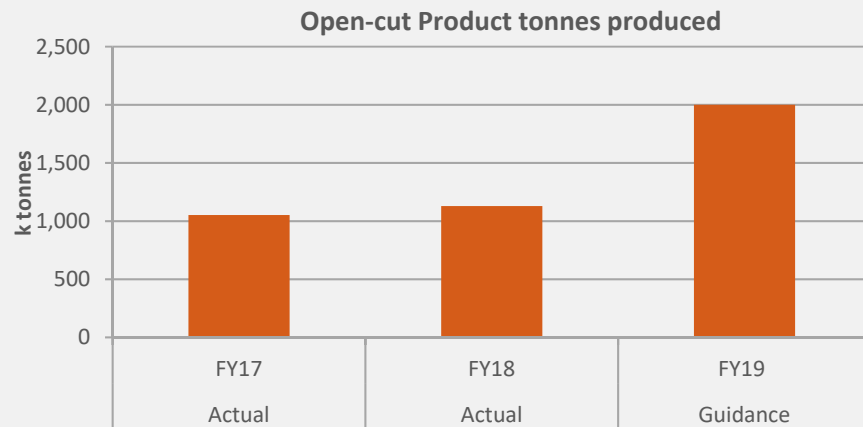
✓ ACHIEVED ... ON TRACK ! REQUIRED

Open-cut ROM tonnes mined



- FY19 guidance of 2.0mtpa product tonnes, 77% higher than FY18
- Planned shutdowns on the Coal Handling and Preparation Plant successfully completed
- FY19 guidance on unit costs at \$86/t (excluding State Royalty), 12% lower than FY18
- Additional long-term DBCT port capacity secured (2.4mtpa) to match infrastructure capacity at the Isaac Plains Complex

Stanmore is very well positioned with a reducing cost structure and increased production profile





- Rehabilitation increased during FY18 with 128ha recontoured and 91ha top-soiled and seeded.
- Additionally, a number of improvement projects were undertaken to improve water management infrastructure and integrity across the Isaac Plains Complex.
- The rehabilitation performance during FY18 resulted in a \$7.8m reduction in the levels of required bonding
- FY19 rehabilitation planned at record levels with approx. 150Ha

Financial

stanmorecoal

Certainty.



Debt free and invested for a 50% increase in production over the next year

\$M	FY2018	FY2017	Comments
Key financial measures			
Underlying EBITDA	45.5	26.8	Record earnings with 70% increase on prior year. Refer adjustments on Appendix A
Net profit /(loss) after tax for the year	6.0	12.0	Impacted by Fair Value movement of contingent consideration, reflecting an increase in long term forecast coal prices
Cash generated from operations	21.9	(17.8)	Record cash generation from Isaac Plains operations
Net cash / (debt)	19.8	11.9	Debt fully repaid
Margins & Unit Costs			
Average sales price (A\$/t)	144.8	135.1	Strong coal price environment expected to remain for at least the medium term
Unit cost per tonne (A\$/t)	110.0	104.5	Increase in costs reflects production acceleration plan, increase in State royalties and increased demurrage at port
Margin (A\$/t)	34.8	30.6	14% improvement in margins, expected to improve in FY19 with lower mining costs at Isaac Plains East and a stronger coal price outlook

Development and Outlook

stanmorecoal

Certainty.

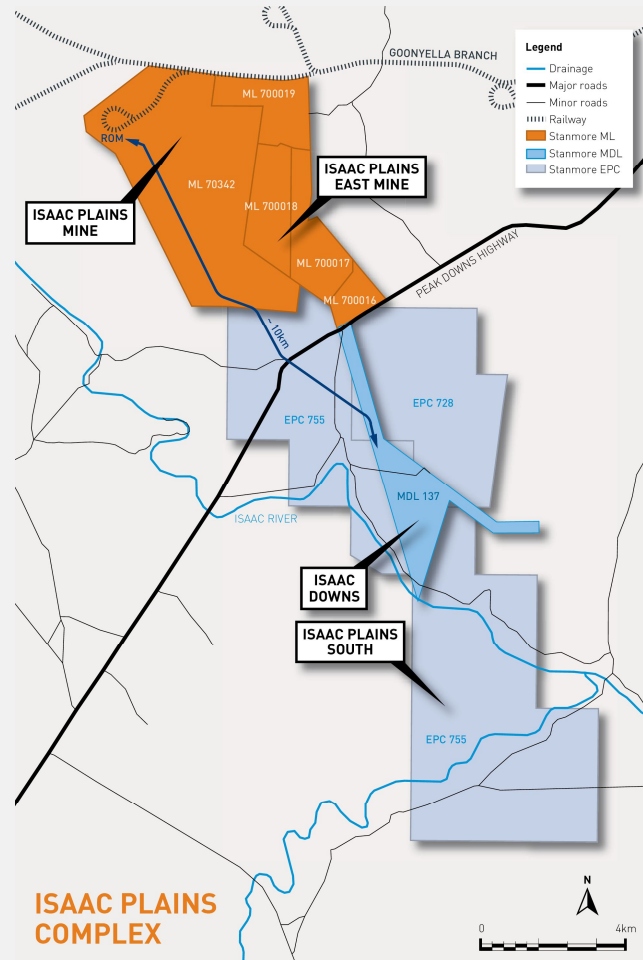
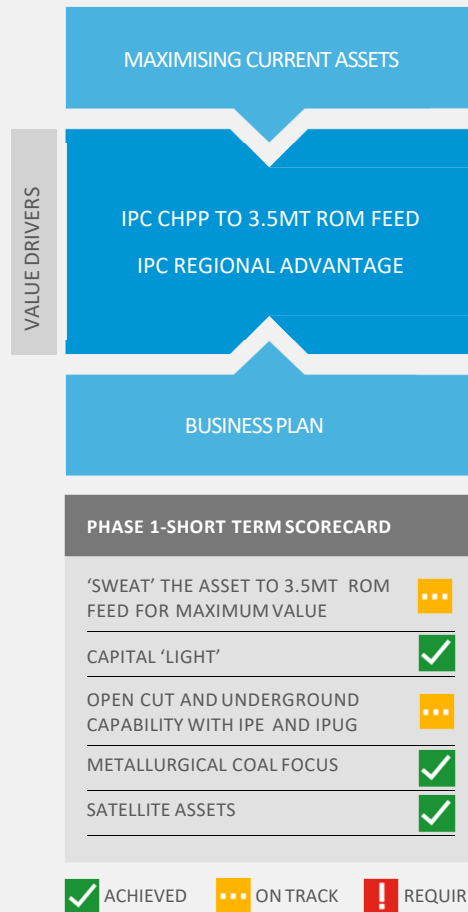


The strategy into action during 2018

stanmorecoal

Cycle proofed and capital light

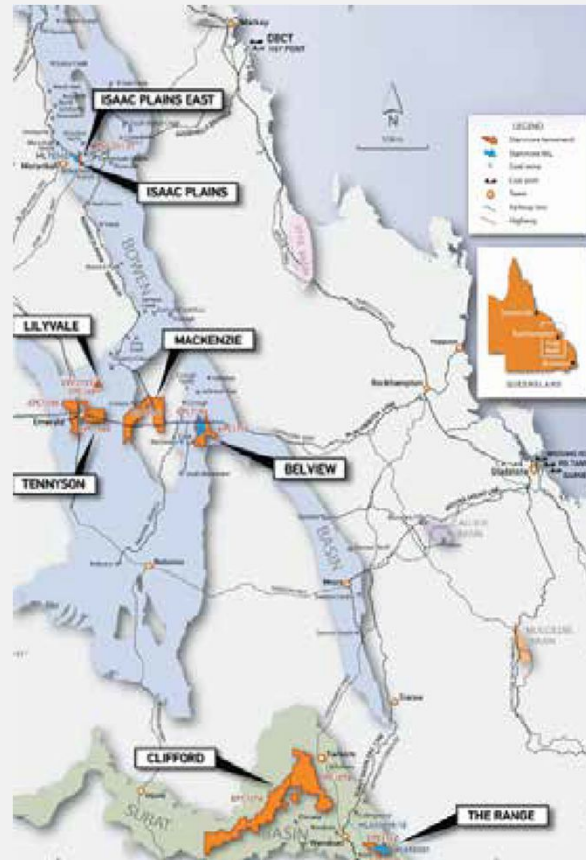
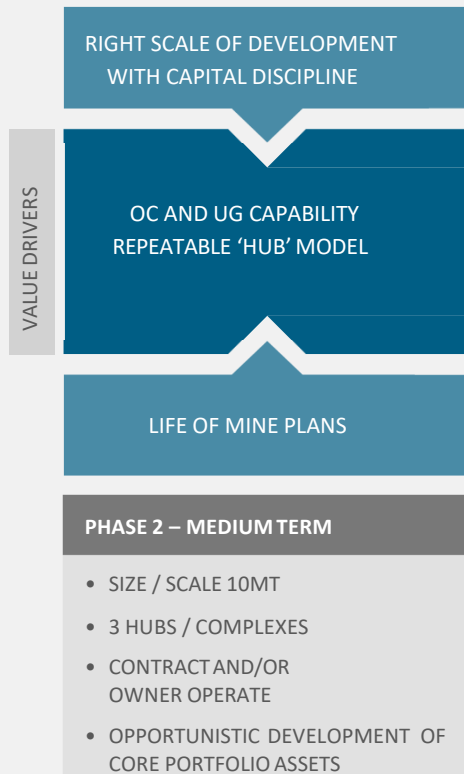
2018



- Toll Loading through Isaac Plains infrastructure successfully completed
- Isaac Plains East fully approved with Environmental Authority and Mining Lease granted
- Mining fully operational and 1st sales of IPE coal made in September 2018
- Acquisition of Wotonga South (now Isaac Downs) completed giving significant boost to mine life, an improvement in cost structure and improving coal quality
- Isaac Plains Underground BFS fully commissioned and investment decision expected in FY19
- Exploration planning commenced for Isaac Plains South

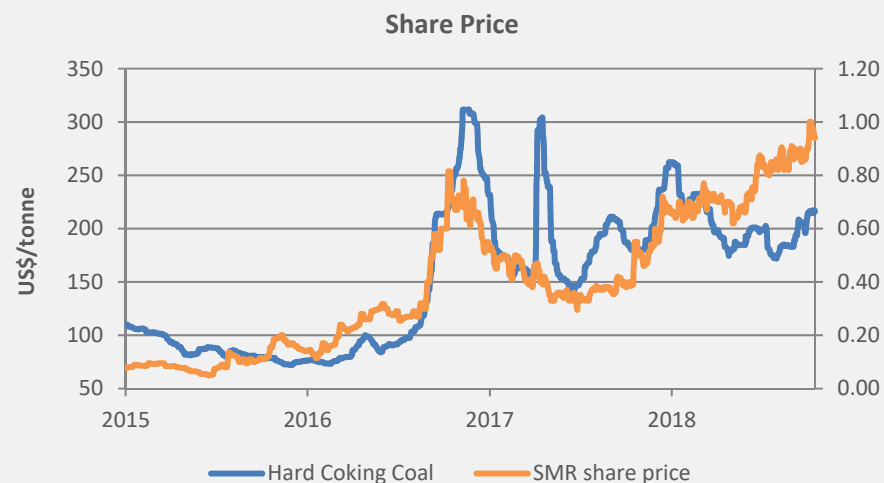
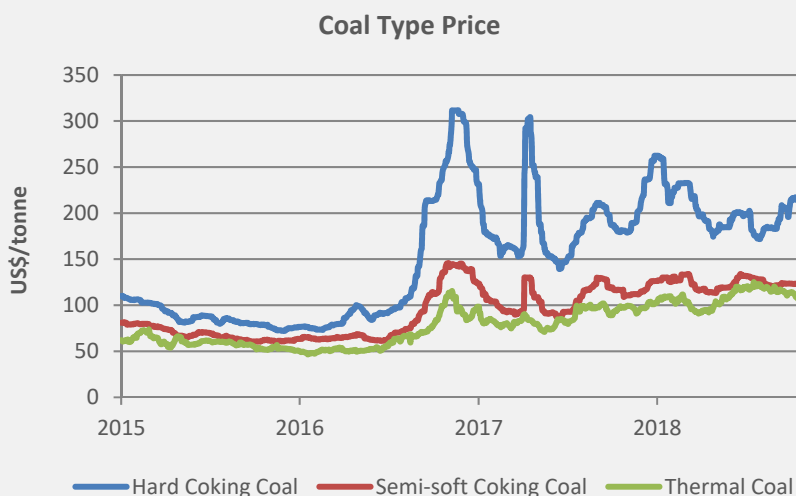
With Isaac Plains maximized, further opportunity exists

2018



- The Range Project is progressing to Environmental Authority Application off the base of the existing Mining Lease Application (MLA).
- Stanmore involvement in developing further lower capital infrastructure solutions to port
- Belview concept study being integrated into a broader region plan for additional value
- Lillyvale exploration planned
- Focussing on multiple producer areas, underutilised capacity and stranded assets

From creating certainty in outcomes and returns to sourcing further ROM coal and preparing the company for the next stage



- Metallurgical coal pricing has remained very well supported and our view is it will remain that way over the long term as there is no replacement technology for this product in the steel making process
- In the short term, China's environmental and safety reform measures have been generally successful. These movements in combination with economic growth in south east Asia and India are resulting in upward pressure on the Australian FOB price

APPENDIX A

\$M	FY2018	FY2017	Comments
Revenue	208.1	137.9	Record revenue, 51% higher than prior year
Cost of sales	(155.8)	(104.1)	Increase in costs reflects production acceleration plan, increase in State royalties, increased demurrage at port and higher sales volumes
Gross Profit/(loss)	52.3	33.8	55% increase on prior year
Other income and expenses	(33.5)	(18.1)	Largely relates to Fair Value movement on contingent consideration
Profit/(loss) before income tax and net finance expenses	18.8	15.7	20% increase on prior year
Finance income	0.3	0.2	
Financial expenses	(9.1)	(9.5)	
Profit/(loss) before income tax benefit/(expense)	10.0	6.4	Record pre-tax profit, 56% increase on prior year
Income tax benefit / (expense)	(4.0)	5.6	
Profit/(loss) after income tax expense	6.0	12.0	
Reconciliation to Underlying EBITDA (non – IFRS measure)			
Profit/(loss) before income tax & net finance expenses	18.8	15.7	
Depreciation and amortisation	5.2	3.3	
Movement in impairment of The Range	-	(8.5)	
Exploration & evaluation costs written off	0.0	0.9	
Fair Value movement of contingent consideration	25.8	14.5	
Remeasurement of onerous contracts	(4.0)	(0.5)	
Remeasurement of rehabilitation provision	(0.3)	1.4	
Underlying EBITDA (non – IFRS measure)	45.5	26.8	