



Date: 3 August 2020

ASX Code: KGD

Board of Directors:

Mark Stowell (Chairman)

Mark Bojanjac

John Hannaford

Simon Adams

Shares on Issue:

155,805,632 Ordinary Shares

Cash (at 20 July 2020):

\$1.6 Million

Contact Details:

Simon Adams

Tel: +61(0)8 6144 0592

info@kulagold.com.au



@KulaGold

ASX Announcement & Media Release

New Gold Project Generation

Kula's technical team has been evaluating historically overlooked areas for potential gold mineralization which has identified prospects over which two new Exploration Licences were applied for.

ELA28/3209 (Kurnalpi Pigeon)

The Pigeon Tenement comprises of 16 Blocks (approx. 47 km²) in the Lake Rebecca Gold Camp area, adjacent and south of Kula's existing Kurnalpi Lake Rebecca project, where exploration drilling is underway.

(Refer Map below)

ELA77/2709 (Moondine Rock Gold Project, Rankin Dome)

The Moondine Rock Tenement covers 55 Blocks (approx. 160km²) and is located 10km West of the town of Southern Cross, and 45km NW of Kula's Airfield Gold project near the town of Marvel Loch.

(Refer Map below)

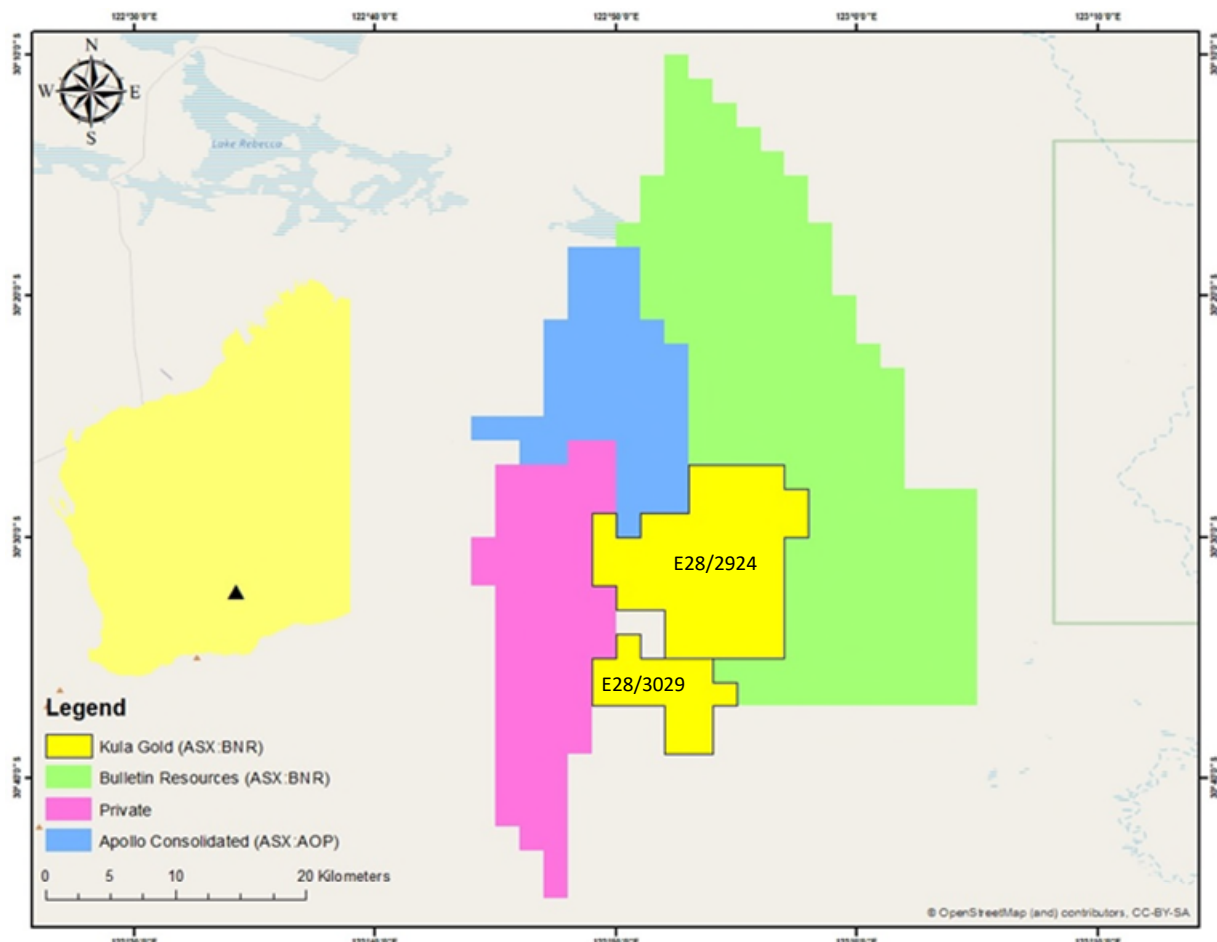
Exploration work on these tenements will be incorporated into the company's programs with limited additional costs expected in the near term while the tenements are still under application.

By order of the Board

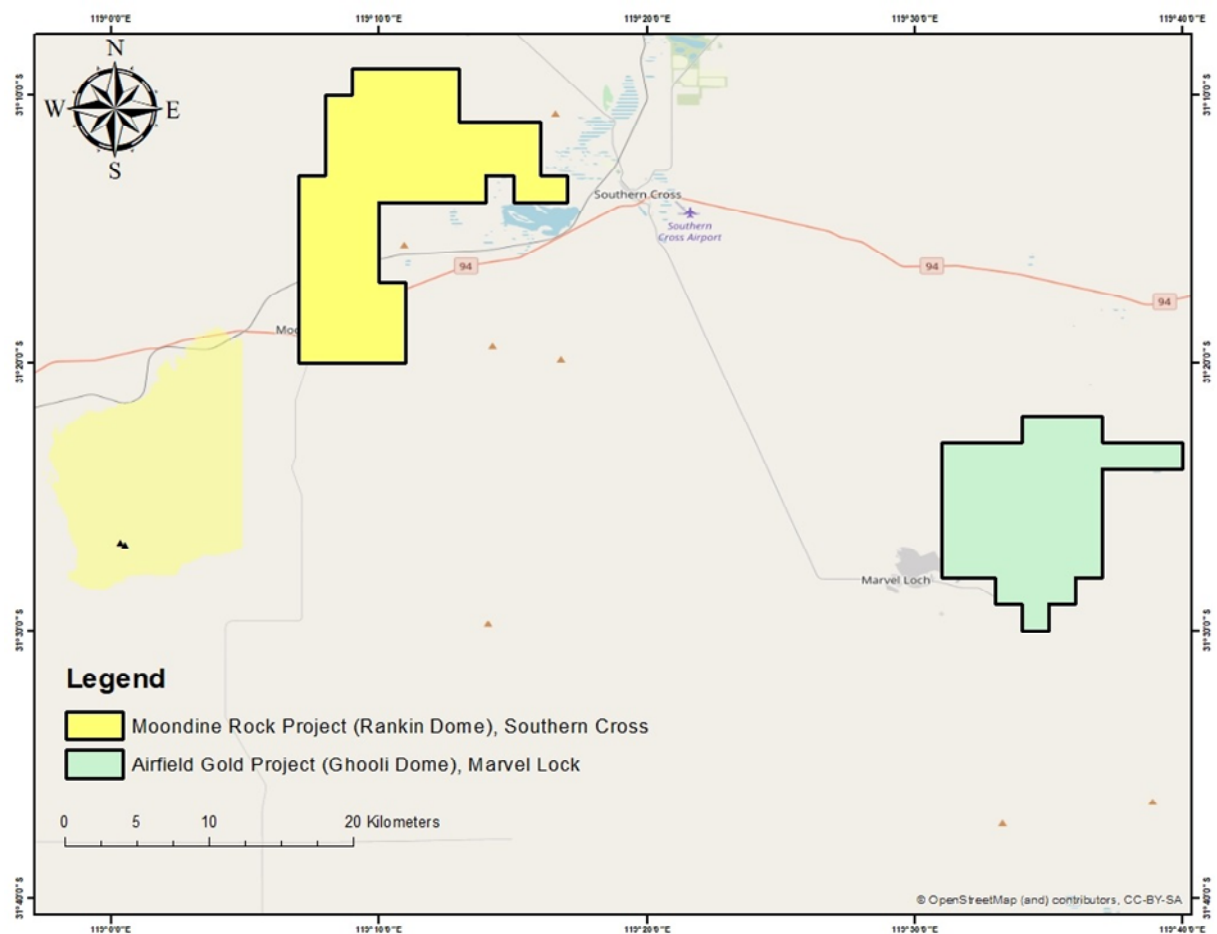
About the Company

Kula Gold Ltd (ASX: KGD) is a Western Australia gold exploration company. The Company holds a portfolio of prospective tenements in the Kurnalpi area, North East of Kalgoorlie and near Southern Cross covering a combined area of 270km².

MAP ATTACHMENTS:



Kurnalpi – Lake Rebecca – New Kula Gold Tenement E28/3029



Southern Cross tenements – new Moondine Rock Gold Project tenement application in relation to Airfields Gold Project