

# **Resource Mining Corporation Battery Metals Exploration**

**Africa Down Under Presentation  
September 2023**



**ASX:RMI**

# Disclaimer

The material in this presentation has been prepared by Resource Mining Corporation Limited ("Company").

This presentation may not be reproduced, redistributed or passed on, directly or indirectly, to any other person, or published, in whole or in part, for any purpose without prior written approval of the Company. The material contained in this presentation is for information purposes only. This presentation is not an offer or invitation for subscription or purchase of, or a recommendation in relation to, securities in the Company and neither this presentation nor anything contained in it shall form the basis of any contract or commitment.

Any offering of any of the Company's securities to Australian persons will be subject to Australian securities laws. The distribution of this document in jurisdictions outside of Australia may be restricted by law, and persons into whose possession this document comes should inform themselves about, and observe, all such restrictions.

This presentation is not financial product or investment advice. It does not consider the investment objectives, financial situation and particular needs of any investor. Before making an investment in the Company, an investor or prospective investor should consider whether such an investment is appropriate to their particular investment needs, objectives and financial circumstances, seek legal and taxation advice as appropriate and consult a financial adviser if necessary.

This presentation may contain forward-looking statements that are subject to risk factors associated with renewable energy business. Forward-looking statements include those containing such words as "anticipate", "estimates", "forecasts", "should", "could", "may", "ideal", "intends", "will", "expects", "plans" or similar expressions. Such forward-looking statements are not guarantees of future performance and involve known and unknown risks, uncertainties, assumptions and other important factors, many of which are beyond the control of the Company. It is believed that the expectations reflected in these statements are reasonable, but they may be affected by a range of variables and changes in underlying assumptions which could cause actual results or trends to differ materially. The Company does not make any representation or warranty as to the accuracy of such statements or assumptions.

This presentation has been prepared by the Company based on information currently available to it. No representation or warranty, express or implied, is made as to the fairness, accuracy, completeness or correctness of the information, opinions and conclusions contained in this presentation. To the maximum extent permitted by law, none of the Company or its subsidiaries or affiliates or the directors, employees, agents, representatives or advisers of any such party, nor any other person accepts any liability for any loss arising from the use of this presentation or its contents or otherwise arising in connection with it, including without limitation, any liability arising from fault or negligence on the part of the Company or its subsidiaries or affiliates or the directors, employees, agents, representatives or advisers of any such party.

# RMC Capital Structure



## Issued Capital

**545,707,452**  
fully paid ordinary shares



## Market Capitalisation

**A\$ 26.7 million**  
at \$0.049  
(as of 4/09/23)



## Trading Statistics

**0.38 million**  
Average daily volume<sup>2</sup>



## Shareholder Distribution

Top 20 hold over 70.14%  
of issued capital

Executive Chairman  
holds over 22.71% of  
issued capital through  
Kabunga Holdings

(1) All figures quoted are as at 5 September 2023, pre completion of the entitlement offer

(2) 90 day average daily volume calculated at 5 September 2023 (Source: ASX)



# Board of Directors



**Asimwe Kabunga**  
Executive  
Chairman

Mr. Kabunga is a Tanzanian born Australian entrepreneur with multiple interests in mining and IT businesses around the world. He has extensive technical and commercial experience in Tanzania, Australia, United Kingdom and the United States. Mr. Kabunga has been instrumental in establishing the Tanzania Community of Western Australia Inc. and served as its first President. Mr. Kabunga was also a founding member of Rafiki Surgical Missions and Safina Foundation, both NGOs dedicated to helping children in Tanzania.



**Trevor Matthews**  
Non-Executive  
Director

Mr. Matthews has an accounting and finance background with over 35-years of experience in the resources industry, including roles with North and WMC Resources in executive-level positions. More recently, his last two roles were as MD for MZI Resources (2012-16) and Murchison Metals (2005-11). During his career, Mr. Matthews has gained considerable experience managing a number of nascent resource projects through to production.



**David Round**  
Non-Executive  
Director

Mr. Round is an experienced finance professional with nickel and graphite operational experience within Africa and internationally. He is a qualified accountant and holder of an MBA and is currently an Executive Director of Evion Group (ASX:EVG) and previously Head of Finance, Sales and Marketing at Australian graphite producer, Bass Metals Ltd where he led a large team in the development of a successful mine operation with supplies of critical minerals worldwide.



**Noel O'Brien**  
Non-Executive  
Technical Director

Mr O'Brien is a highly experienced metallurgist and company executive with broad experience across a distinguished career of over 40 years. Mr O'Brien has a depth of technical knowledge across metallurgy as well as processing strategy and analysis. Mr O'Brien has been a Non-Executive Director of Galileo Mining Limited (ASX:GAL) since December 2017, and during his tenure the company's market capitalisation has increased tenfold. Mr O'Brien also holds a number of advisory roles across other listed and unlisted exploration and mining companies.

# RMC exploring for Lithium, Nickel & Cobalt



## NICKEL

The market use of nickel will diversify over the next decade from high-grade steel required for skyscrapers and transportation networks to meet global demand for battery-grade nickel. The battery industry's market share of nickel consumption will rise to 26 percent by 2030, according to analysts of Commodity Insights.



## LITHIUM

The main driver of the forthcoming surge in demand for lithium ion batteries will be car manufacturers releasing more Electric Vehicle ("EV") models and the rising use of renewable energy requiring greater use of energy storage technology. Commodity Insights forecasts growth in lithium demand of 368 percent to 2030.

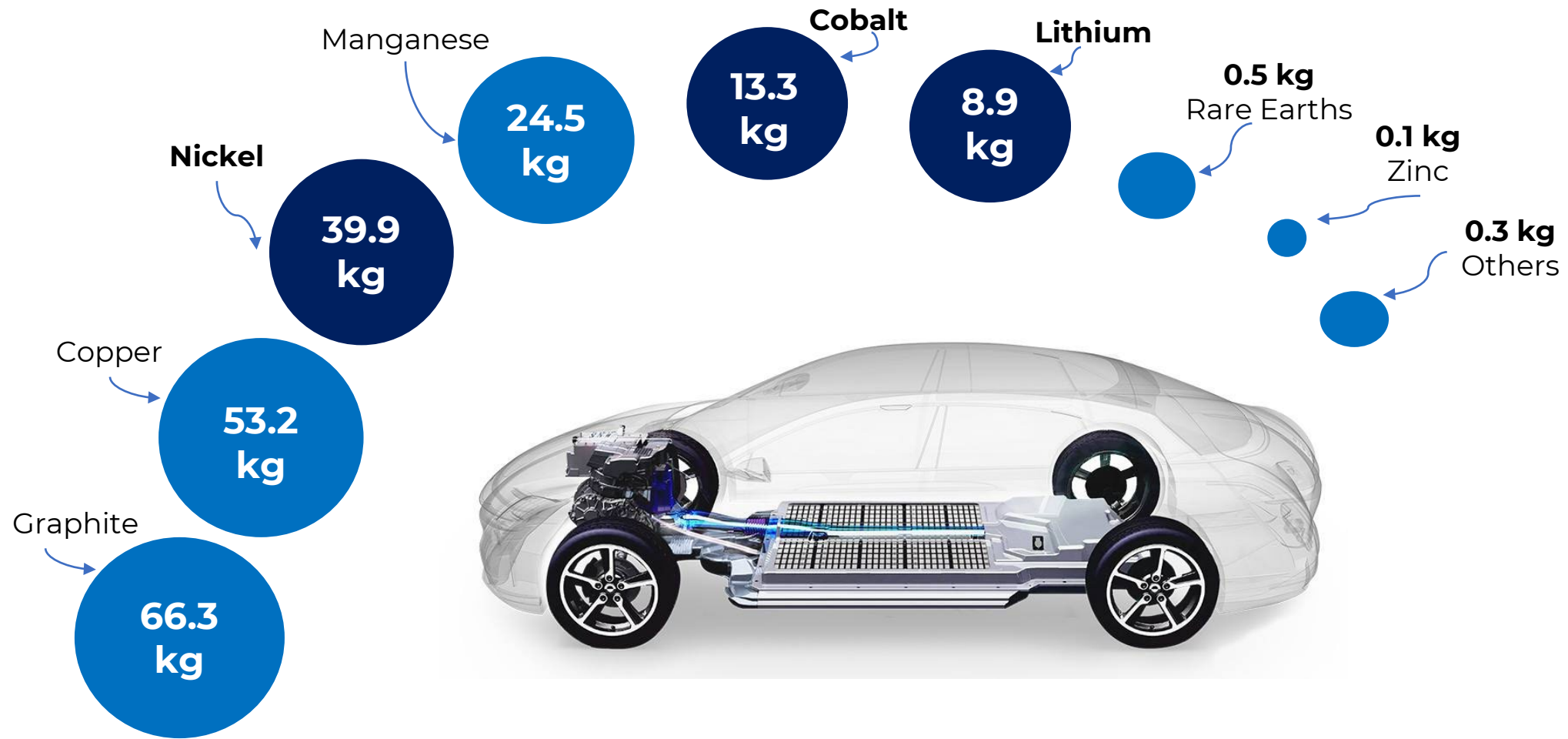


## COBALT

Cobalt is an important material in the cathode of many lithium-ion batteries as it boosts energy density and extends battery life. Rapid growth in the production of EV's over the next ten years is set to significantly increase global demand for cobalt and will require new mines around the world to open.

*Source: Minerals Council of Australia (The Futurist Edition)*

# EVs Use A Lot Of Nickel, Cobalt And Lithium





A photograph of a savanna landscape at sunset. The sky is a mix of orange, yellow, and purple. Several acacia trees with their characteristic flat-topped canopies are scattered across the landscape. The foreground is a grassy plain. The text 'Tanzanian Projects' is overlaid in the center in a white, bold, sans-serif font, enclosed in a thin white rectangular border.

# Tanzanian Projects



# Tanzania: On the map for nickel exploration

- Tanzania's President, Samia Suluhu Hassan, came into power in April 2021 and is very supportive of local and international investors. BHP has committed to significant investments in the country via the Kabanga Nickel Project<sup>3</sup>.
- RMC's board has strong ties to Tanzania, Chaired by Asimwe Kabunga, a Tanzanian-born Australian entrepreneur.
- Tanzania is highly prospective for nickel. As well as the Kabanga Nickel project with 58 million tonnes at 2.62% Ni<sup>4</sup>, the country also hosts meaningful resources at Ntaka Hill, Musongati, Kapalagulu, Dutwa and Zanzu.
- The East African Nickel Belt is one of the world's premier nickel exploration areas, yet Tanzania remains significantly underexplored.
- RMC's projects are geologically similar in setting to the Kabanga Nickel Project (where BHP has invested in its development).



<sup>3</sup>: <https://www.miningmx.com/news/base-metals/52484-bhp-concludes-100m-investment-in-kabanga-nickel/>

<sup>4</sup>: Refer to ASX announcement dated 9 May 2022 including the Competent Person Statement disclosed, and [Glencore Resources and Reserves as at 31 December 2019](#). The Mineral Resource Estimate is broken down into the following classifications – 13.8mT @ 2.49% Ni Measured, 23.4mT @ 2.72% Ni% indicated & 21mT @ 2.6% Ni inferred. RMC does not have any interest in the Kabanga Nickel Project



# RMC Tanzania Projects

Three project areas to be explored are:

## Southern Projects (Liparamba, Kitai, Mbinga)

Previously explored by BHP/Albidon and Jacana Resources.

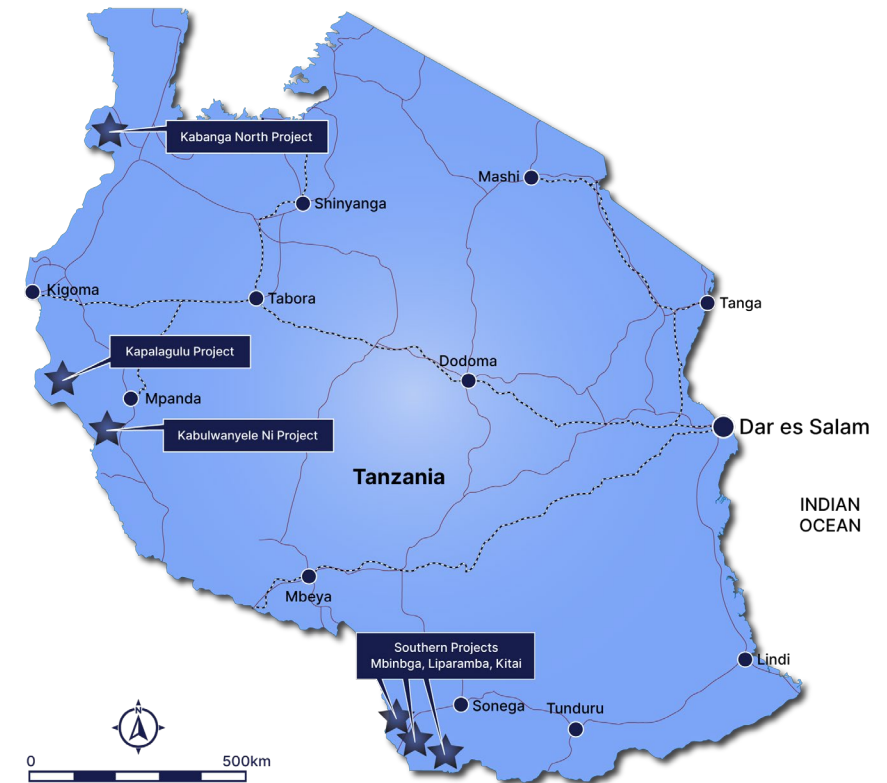
## Kabanga North Nickel Project

Along strike from the Kabanga Nickel project, which has an estimated mineral resource of 58mt @ 2.62% Ni, or nickel equivalent grade of 3.14%<sup>5</sup> (including cobalt and copper).

## Kapalagulu Project

32km mapped mafic/ultramafic sequence with historical reports noting nickel, PGE and copper anomalism. Historical drilling has identified up to 1.57% Ni<sup>6</sup>.

## Location of projects in Tanzania



5,6. Refer to ASX announcement dated 9 May 2022 including the Competent Person Statement disclosed, and [Glencore Resources and Reserves as at 31 December 2019](#). The Mineral Resource Estimate is broken down into the following classifications – 13.8mT @ 2.49% Ni Measured, 23.4mT @ 2.72% Ni% indicated & 21mT @ 2.6% Ni inferred. RMC does not have any interest in the Kabanga Nickel Project

# RMC Tanzania: Liparamba Nickel Project

01

The Liparamba Nickel Project, in the Ruvumba district (Southern Tanzania) is an exceptional target that was discovered by **BHP & Albidon**<sup>7</sup>

02

Field work consisting of mapping, geochemistry, VTEM and AMT surveys have identified at least 6 convergent targets located <150m from surface, along a highly prospective trend over 2km in length<sup>8</sup>

03

Disseminated sulphides accompanied by the occasional “bleb” have been identified during field work sampling and have now been confirmed in the initial drill hole

04

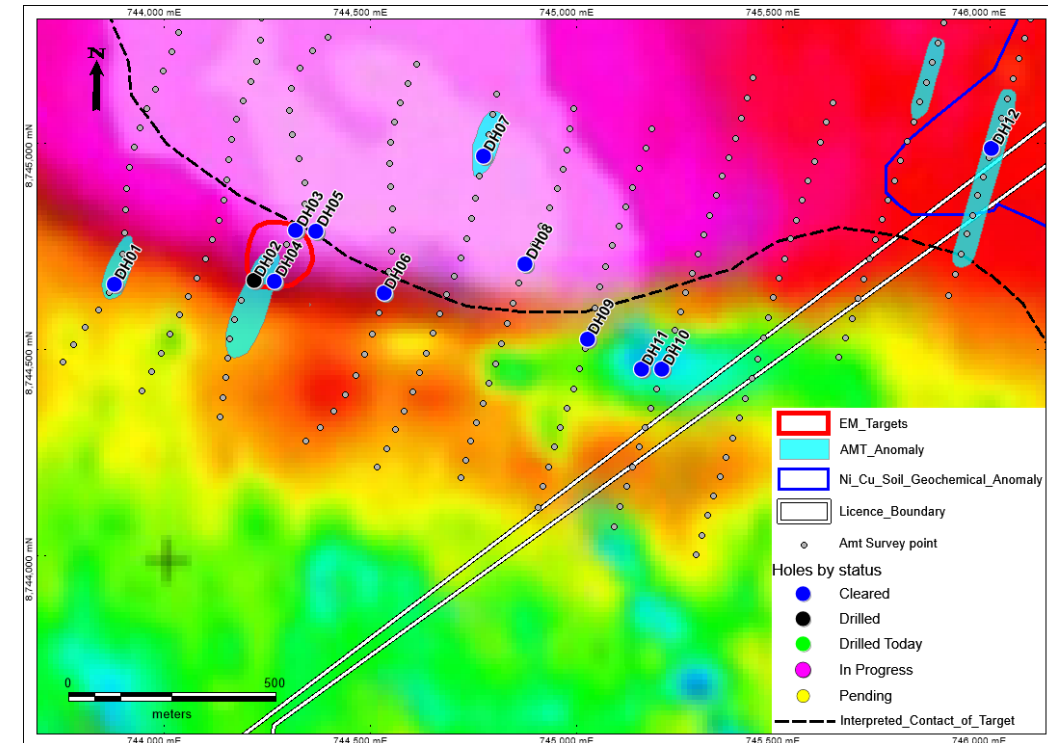
The initial RC drill hole **intersected disseminated sulphides from 38m to 120m down hole**

05

On the encouraging initial results, the Reverse Circulation drilling program was **upgraded to a Diamond Drilling program**

7. Refer AS announcements 9 Feb 2023

8. Refer ASX announcements 11 May 2023







# Finland Projects



# Finland: Lithium leader in Europe

Finnish government has invested in Keliber Lithium Project and provided funding for Lithium processing facility in Kokkola.

Mining major Sibanye Stillwater has also invested in Keliber.

Finland has 40 operating mines, is the largest producer of Nickel in Europe and scored 9th for all mining jurisdictions globally in Fraser Survey.

Finnish government continues to release ground for mineral exploration.

Finland is well placed to support Europe's EV battery supply chain.

Finland has battery factories and refineries owned by companies including Norway's FREYR and China's CATL

EU is supportive of mining in Finland, with European Raw Material Alliance nominating 4 key Finnish projects as strategic to its 2030 goals

## Finnish government invests in mining

FINNISH  
MINERALS  
GROUP



### FINNISH MINERALS GROUP INVESTS EUR 54 MILLION IN KELIBER'S LITHIUM MINE AND HYDROXIDE REFINERY PROJECT

We strengthen European lithium production by participating in Keliber's financing.

PUBLISHED  
25 April 2023

The mining and battery holding and development company Finnish Minerals Group has decided to participate in the directed share issue that Keliber announced in 2022 by investing EUR 53.95 million in the company. The investment will increase Finnish Minerals Group's holding in Keliber from about 14 per cent back to 20 per cent. Before this investment, Finnish Minerals Group, and previously Finnish Industry Investment Ltd, have invested a total of EUR 16.7 million in Keliber.

## EU shortlisted Finnish projects as 'strategic'

ECONOMIST  
INTELLIGENCE

EU

Who we help ▾ Solutions ▾ Insights ▾ About ▾ Contact | EU Store | Search

### EU acts to secure access to critical raw materials

Mon, 17th Apr 2023

Article tags

Commodity Regulation Europe Country Analysis Manufacturing



- The European Commission has passed a Critical Raw Materials Act to secure the EU's future supply of critical raw materials.

# RMC Finland Projects

## Kola Lithium Project

Located in the most significant Lithium-mining region of Finland, with grab samples of up to 5.6 Li<sub>2</sub>O. Outcropping pegmatites >600m in length and 100m wide 6km corridor with multiple potential lithium pegmatites, directly south, adjacent and on trend with the under construction Keliber lithium project

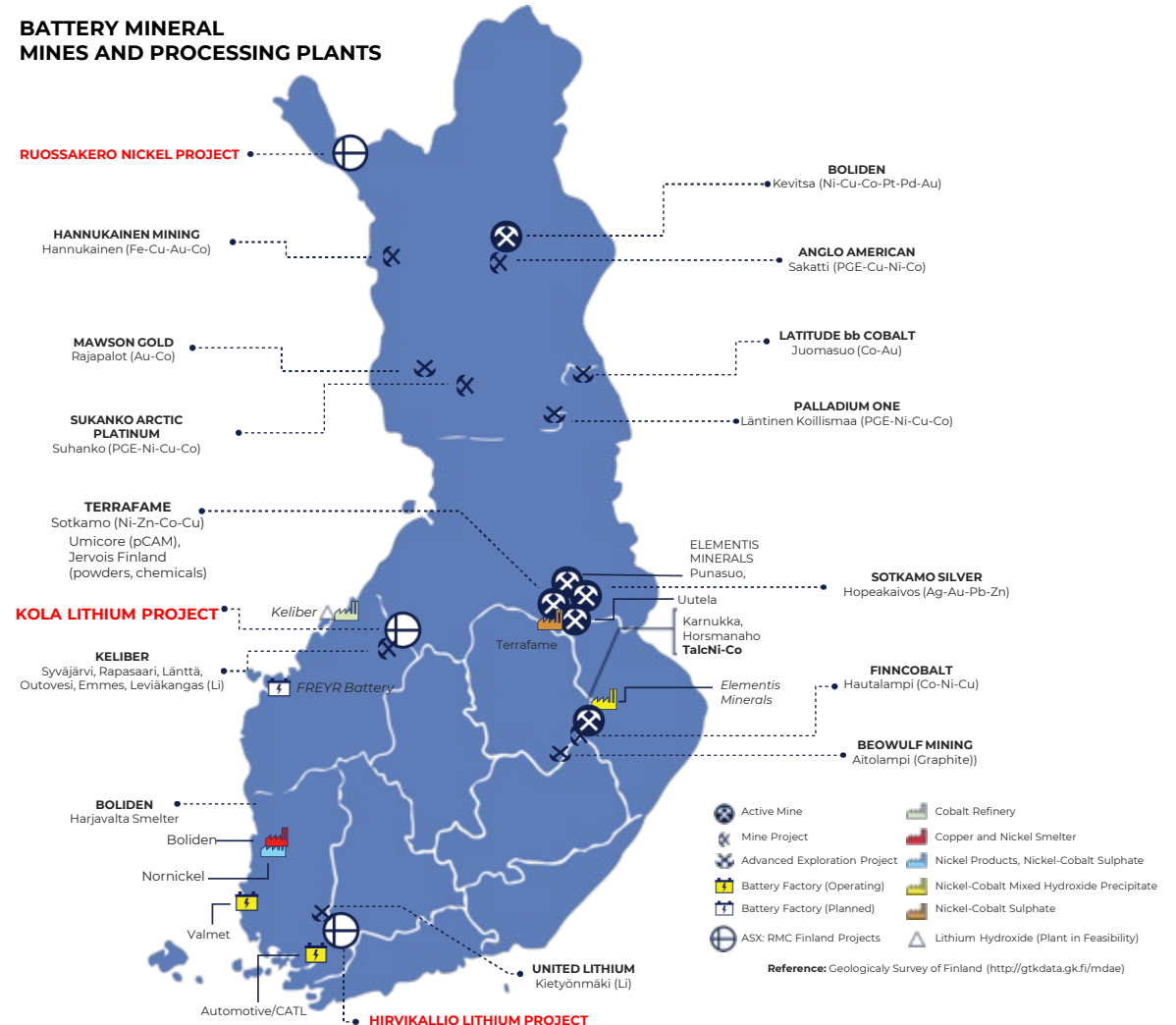
## Ruossakero Nickel Project

Recently announced resource of 42.1Mt @ 0.40% Nickel at Ruossakero Discovered and drilled by GTK in 80s reporting 14m @ 1.03% Ni, 240ppm Co, 30m @ 0.64% Ni, 433ppm Co and 16m @ 0.92% Ni, 244ppm Co with 70% of the mafic-ultramafic mineralisation undrilled.

## Hirvikallio Lithium Project

Initial exploration works completed by GTK across the project's area identified approximately 25 km<sup>2</sup> with pegmatite dykes returning promising results including 5m @ 2.30% Li<sub>2</sub>O and 2m @ 1.33% Li<sub>2</sub>O. Near CATL and Valmet battery factories. Recent samples grading 4.7% Li<sub>2</sub>O.

## BATTERY MINERAL MINES AND PROCESSING PLANTS

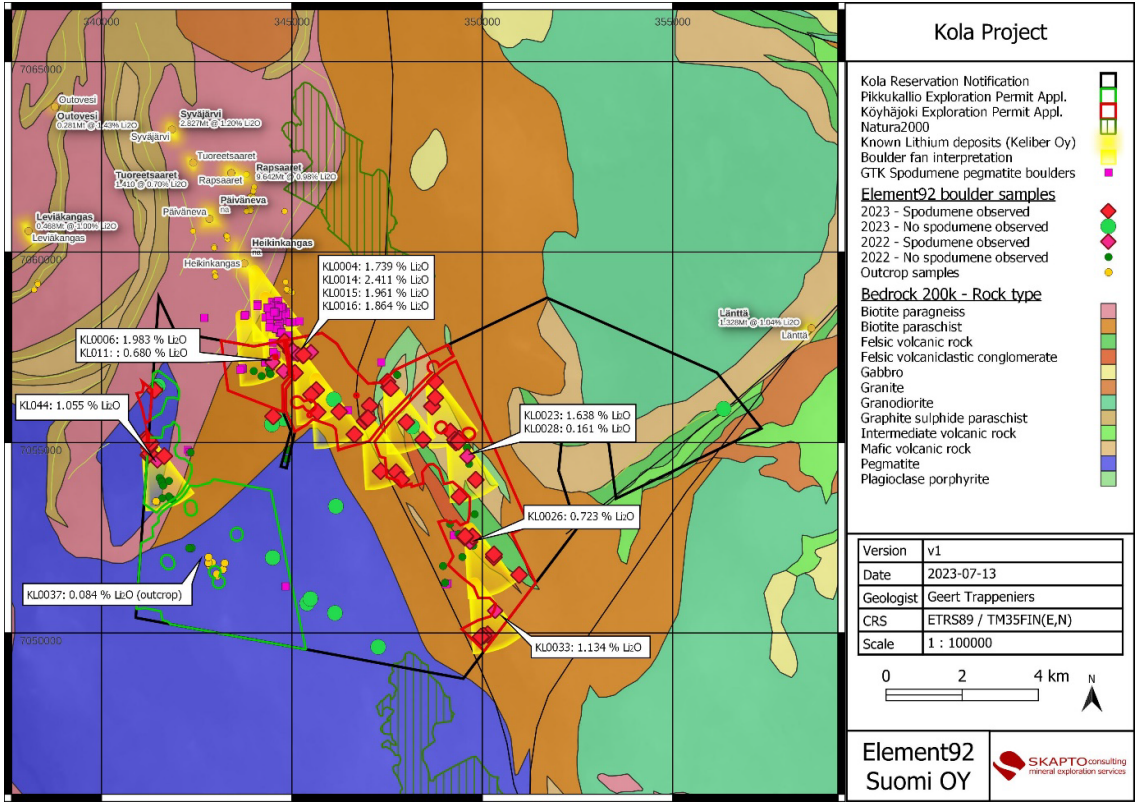
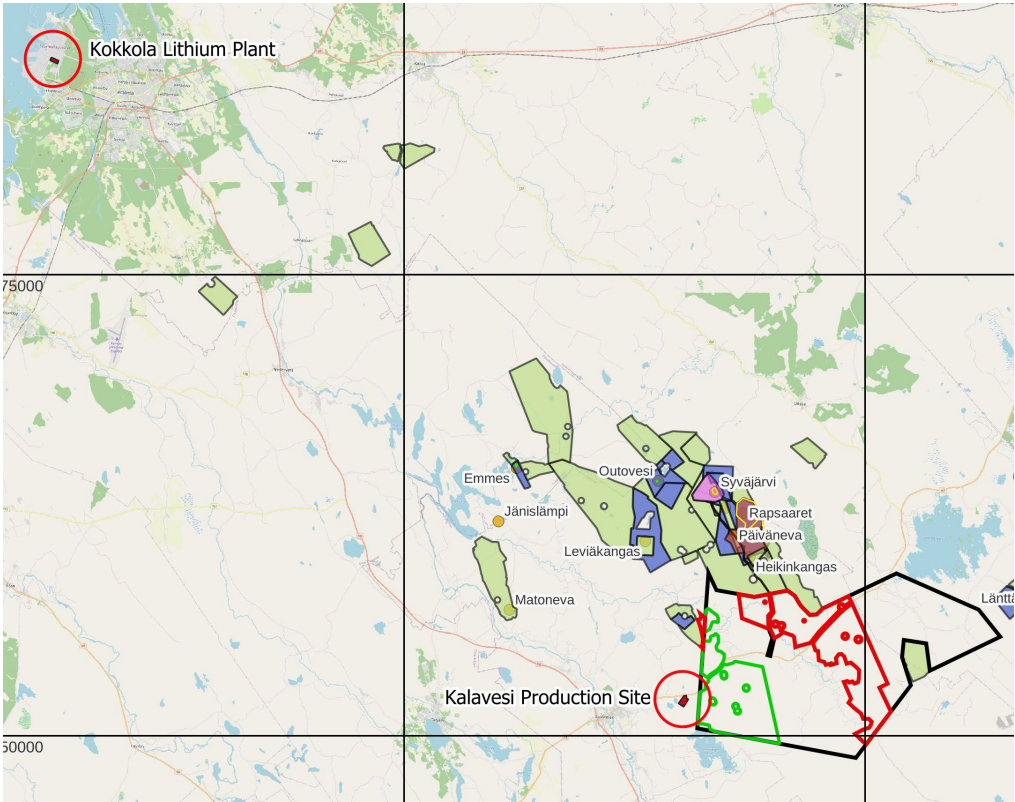


# RMC Finland: Kola Lithium

- 101.26 km<sup>2</sup>, positioned on Finland's central west coast directly south and adjacent to Sibanye-Stillwaters' Keliber Lithium Project.
- The €588m Keliber project is under construction (includes €359m for the Refinery) and has Minerals Resources of 17mt @ 1.02% Li<sub>2</sub>O
- The Kola Lithium project is approx. 60km from the Port of Kokkola where the new refinery which will have spare capacity is located.
- Spodumene sampling in boulders has returned multiple lithium rich grab samples (up to 2.4% Li<sub>2</sub>O) and has identified a 6km corridor with Li-pegmatite targets on trend and coinciding with the Keliber Li-pegmatites.
- RMC has a reservation permit and has submitted 2 exploration licenses for approval, which are expected to be approved within the next 3 to 4 months
- Assays point to the presence of lithium-bearing pegmatites in the northern part of the project, and along trend with Keliber's deposits, with highest lithium value of 5.26% Li<sub>2</sub>O
- Results of a Ground Penetrating Radar ("GPR") field survey over the boulder fields at the Kola project show the presence of bedrock 8 - 11m below the boulder fields



# RMC Finland: Kola Lithium



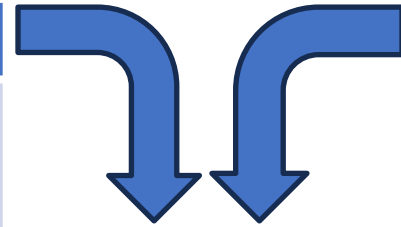
Research by Finnish Geological Services has concluded that boulders have moved a maximum of 1.5km to 2km in an SSE direction from the pegmatitic source<sup>27</sup>. Initial work from GPR survey indicates that the glacial till is 2 to 11m thick<sup>28</sup>.

27. Refer ASX announcements 31 January 2023  
28. Refer ASX announcements 7 June 2023

# Kola Lithium – the building Blocks for a Lithium Mine

## Macro Factors

<b>Structural shift</b>	Green Energy and Zero Carbon Footprint economy  EU Energy Independence
<b>Key driver</b>	Lithium-Ion batteries
<b>Critical Component</b>	Lithium
<b>Jurisdiction</b>	Finland ranked 9 <sup>th</sup> on by Fraser institute <sup>29</sup>
<b>Supportive Government</b>	Largest producer of Nickel in Europe <sup>30</sup>  Government paying for equity in Projects <sup>31</sup>
<b>Supportive Stakeholder</b>	The Keliber Mine and the associated Refinery is under construction <sup>32</sup>
<b>Tenure</b>	Reservation application for Exploration permit submitted



**Fundable Projects**



**Funded Projects**



## Local Factors

<b>Geology</b>	Directly adjacent and south of Keliber
<b>Mineralisation Model</b>	Source boulder/ outcrops containing Spodumene confirming Lithium mineralization
<b>Targeting</b>	Glacial movement of boulders is 1.5 to 2km in a SSE direction <sup>33</sup> , and boulder/ till cover is 2 to 11m <sup>34</sup>
<b>Mineralization</b>	Identified high potential for Li-pegmatites coinciding with the Keliber Li-pegmatites
<b>Grade</b>	Boulder grab samples up to 2.4% Li <sub>2</sub> O <sup>35</sup> , Keliber resource grade is 1.02% Li <sub>2</sub> O <sup>36</sup>
<b>Size</b>	Potential for a 6km <sup>37</sup> mineralised corridor (Keliber resource of 17mt <sup>38</sup> contained within a 4km corridor)
<b>Recovery</b>	Mineralization is expected to be the same as Keliber
<b>Profitability</b>	Finland has low hydro power costs and excellent infrastructure
<b>Environmental</b>	Low Carbon Footprint <sup>39</sup> . NOT Natura 2000, extraction of peat and timber within area
<b>Market</b>	Refinery 60km away and within Europe

**Indicative Valuation**

## Euroz Hartleys published some 'rule of thumb valuations for lithium companies'<sup>40</sup>

- "We recently published some rule of thumb valuations in the current market:
- 'Every 10mt of potential spodumene resource is ~A\$80-120m of exploration value.'
- "Every 10mt of resource that has a clear pathway to production increases to A\$150- 300m of speculative development value.'
- "In production, at current prices, every 10mt mining inventory is ~A\$1.2b on spot prices."





# RMC Finland: Ruossakero Nickel Project

**42.1 Mt Nickel Sulphide Resource recently confirmed at Ruossakero by Snowden Optiro @ 0.40% nickel and 0.016% cobalt (containing 168.4 Kt of Nickel and 6.7 Kt of Cobalt)<sup>21</sup>**

**Ruossakero was drilled by the Finish Geological Survey who reported the following results:**

- 14m @ 1.03% Nickel, 240PPM Cobalt
- 30m @ 0.64% Nickel, 433PPM Cobalt
- 16m @ 0.92% Nickel, 244PPM Cobalt

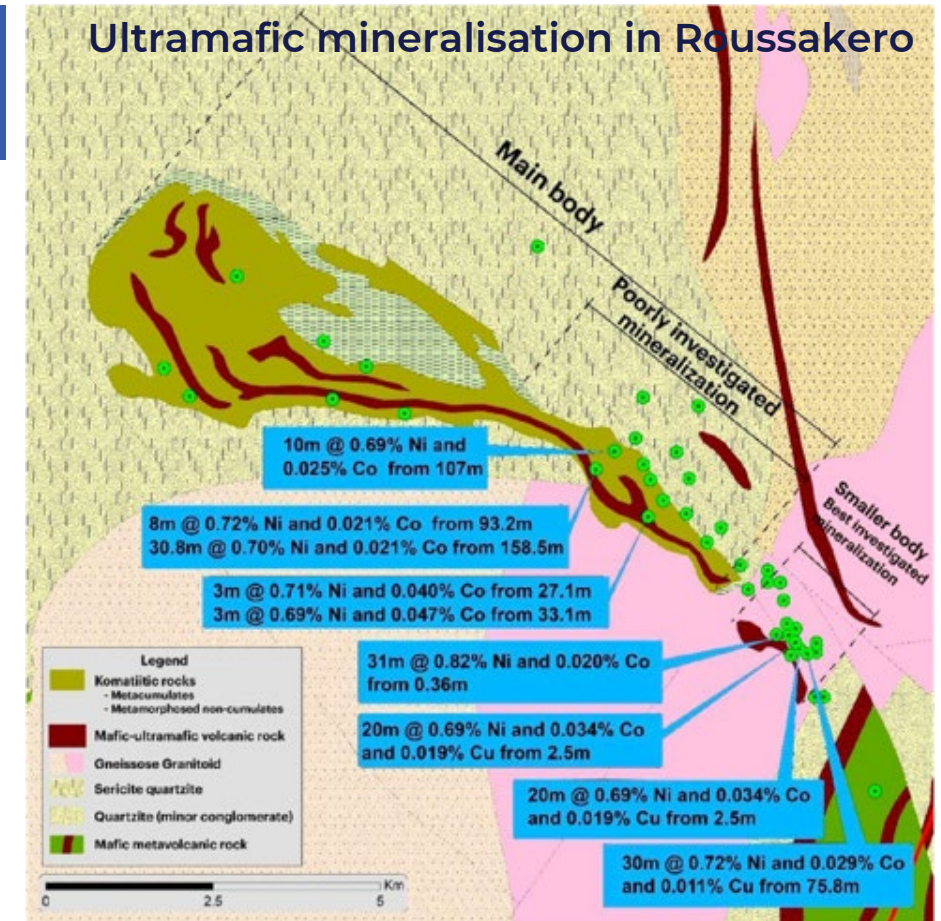
70% of the mafic-ultramafic mineralisation remains untested.

Two additional targets at Ruossakero, Sarvisoavi and Tsohkkoaivi (both Ni-Cu-Co), have returned assay results of 10.3m @ 0.89% Ni, and 2.1m @ 1.16% Ni, respectively, presenting further exploration potential.<sup>22</sup>

***Potential to grow significantly and identify high grade area***

<sup>21</sup> Refer ASX announcements 28 Feb 2023, 13 March 2023

<sup>22</sup> Refer ASX announcements 7 June 2022





# RMC Investment Highlights

<b>Overview</b>	<p>Resource Mining Corporation has several assets located in Finland and Tanzania. The Company is aggressively targeting and exploring for green energy metals specifically nickel and lithium. The Company holds a JORC (2012) compliant inferred nickel resource at the <b>Ruossakero Nickel project</b> of 42.1Mt containing 168.4 Kt of Nickel and 6.7 Kt of Cobalt<sup>4</sup>. The <b>Ruossakero Nickel project</b> offers shareholders intrinsic value. The <b>Kola Lithium Project</b> in Finland located directly south, adjacent and on trend with the under construction Kelibar<sup>5</sup> lithium project has all the building blocks to be a extremely significant value driver for RMC shareholders. The <b>Liparamba project</b> offers RMC shareholders exposure to potential “Elephant” type discoveries and remaining portfolio of projects provides significant optionality.</p>
<b>Near-term News flow and Catalysts</b>	<p>At the <b>Liparamba project</b> in Tanzania the Company is currently completing a 2,000m drilling program to intersect identified nickel bearing sulphides. Field work consisting of mapping, geochemistry, VTEM and AMT surveys have identified at least 6 convergent targets located &lt;150m from surface, along a highly prospective trend of over 2km in length<sup>5</sup>.</p> <p>In Finland, at the <b>Kola Lithium project</b> the Company has identified a 6km corridor<sup>6</sup> with multiple potential lithium pegmatites, directly south, adjacent and on trend with the under construction Kelibar lithium project. Recent boulder sampling returned up to 5.3% Li<sub>2</sub>O<sup>7</sup>, The Company is awaiting the release of numerous assays from boulder samples taken from the latest fieldwork. RMC has submitted 2 exploration licenses for approval, which is expected to be approved within the next 3 to 4 months</p>
<b>Substantial Project Portfolio</b>	<p><b>Hirvikallio Lithium Project (Finland)</b> - 25 km<sup>2</sup> with pegmatite dykes returning promising results including 5m @ 2.30% Li<sub>2</sub>O and 2m @ 1.33% Li<sub>2</sub>O<sup>8</sup>.</p> <p><b>Mbinga and Katai (Tanzania)</b> – Offers 3 walk up drill ready target areas</p> <p><b>Kabanga North Nickel Project (Tanzania)</b> - Situated along strike from the Kabanga Nickel Project, which has an estimated mineral resource of 58mt @ 2.62% Ni, or nickel equivalent grade of 3.14% (including cobalt and copper)<sup>9</sup>.</p> <p><b>Kapalagulu Project (Tanzania)</b> - 32km mapped mafic/ultramafic sequence offering 5 drill ready target areas.</p>

4. Refer ASX announcements 28 Feb 2023, 13 March 2023

5. Refer ASX announcements 11 May 2023

6. Refer ASX announcements 7 June 2023

7. Refer ASX announcements 3 August 2023

8. Refer to ASX Announcement dated 7 June 2022

9. Refer to ASX announcement dated 9 May 2022 including the Competent Person Statement disclosed, and [Glencore Resources and Reserves as at 31 December 2019](#). The Mineral Resource Estimate is broken down into the following classifications – 13.8mT @ 2.49% Ni Measured, 23.4mT @ 2.72% Ni% indicated & 21mT @ 2.6% Ni inferred. RMC does not have any interest in the Kabanga Nickel Project.

# Competent Person Statement

## Exploration results

Information in this announcement that relates to Exploration results and targets is based on, and fairly reflects, information compiled by Mr. Mark Gifford, a Competent Person who is a Fellow of the Australian Institute of Mining and Metallurgy. Mr. Gifford is an independent geological consultant. Mr. Gifford has sufficient experience that is relevant to the style of mineralisation and type of deposits under consideration and to the activity which he is undertaking to qualify as a Competent Person as defined by the 2012 Edition of the Australasian Code for Reporting of Exploration Results, Mineral Resources and Ore Reserves. Mr. Gifford consents to the inclusion of the data in the form and context in which it appears.

Information in this announcement that relates to Exploration results for the Kapalagulu Nickel Project has been reported by Goldstream Mining NL in its 2005 Annual Report, not RMC, under the 2004 Edition of the Australasian Code for Reporting of Exploration Results, Mineral Resources and Ore Reserves (JORC Code) as at 10 October 2005 (see <https://indianaresources.com.au/wp-content/uploads/2015/10/626.pdf>). The reporting of these Exploration results may not conform to the requirements in the 2012 Edition of the JORC Code (JORC Code 2012). RMC has no reason to doubt the reliability of these Exploration results. Mr. Mark Gifford, a Competent Person who is a Fellow of the Australian Institute of Mining and Metallurgy, considers that the information in this announcement is an accurate representation of the available data and studies for the mining project. RMC notes that: these Exploration results have not been reported in accordance with JORC Code 2012; a Competent Person has not done sufficient work to disclose the Exploration results in accordance with JORC Code 2012; and it is possible that following further evaluation and/or exploration work that the confidence in the prior reported Exploration results may be reduced when reported under the JORC Code 2012. Nothing has come to RMC's attention that causes RMC to question the accuracy or reliability of these Exploration results. However, RMC has not independently validated these Exploration results and therefore this announcement is not to be regarded as reporting, adopting or endorsing those results.

## Mineral resources

Information in this announcement that relates to the mineral resource for Kabanga Nickel's 'Kabanga Project' has been reported by Glencore, not RMC, under the 2012 Edition of the Australasian Code for Reporting of Exploration Results, Mineral Resources and Ore Reserves (JORC Code) as at 31 December 2014 (see <https://www.glencore.com/dam/jcr:7441d06f-2981-4f40-bd3b-93e4b074e921/GLEN-2014-Resources-Reserves-Report.pdf>). RMC has no reason to doubt the reliability of these estimates. Mr. Mark Gifford, a Competent Person who is a Fellow of the Australian Institute of Mining and Metallurgy, considers that the information in this announcement is an accurate representation of the available data and studies for the mining project. Nothing has come to RMC's attention that causes RMC to question the accuracy or reliability of these estimates. RMC considers that the information in this announcement is an accurate representation of the available data and studies for the mining project. However, RMC has not independently validated these estimates and therefore this announcement is not to be regarded as reporting, adopting or endorsing those estimates. Please note the Kabanga Nickel Project is not part of the Massive Nickel Pty Ltd Acquisition. The information is being provided for the purpose of practical, fulsome disclosure.

# Contact Us

## **Resource Mining Corporation Limited**

[rmc@resmin.com.au](mailto:rmc@resmin.com.au)

+61 (02) 8072 1400

Level 5, 191 St George's Terrace, West Perth 6005 Western Australia

## **Investor and Media Enquiries**

Alex Cowie

[alexc@nwrcommunications.com.au](mailto:alexc@nwrcommunications.com.au)

+61 (0) 412 952 610