



Investor Presentation

Dr. Marie Roskrow, CEO & Managing Director
June 2014

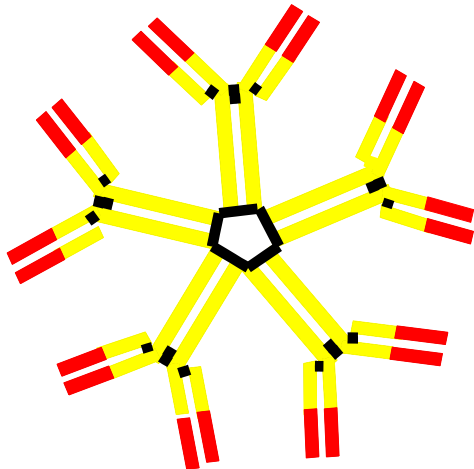
ASX: PAB

Safe Harbour Statement

This presentation contains forward-looking statements that are subject to risks and uncertainties. Such statements involve known and unknown risks that may cause the actual results, performance or achievements of Patrys Limited to be materially different from the statements in this presentation.

Actual results could differ materially depending on factors such as the availability of resources, the results of clinical studies, the timing and effects of regulatory actions, the strength of competition and the effectiveness of the Company's patent protection.

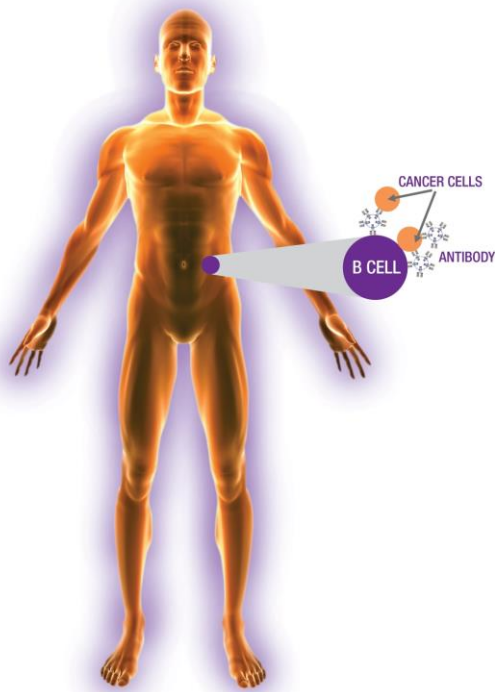
Patrys in 2014



IgM

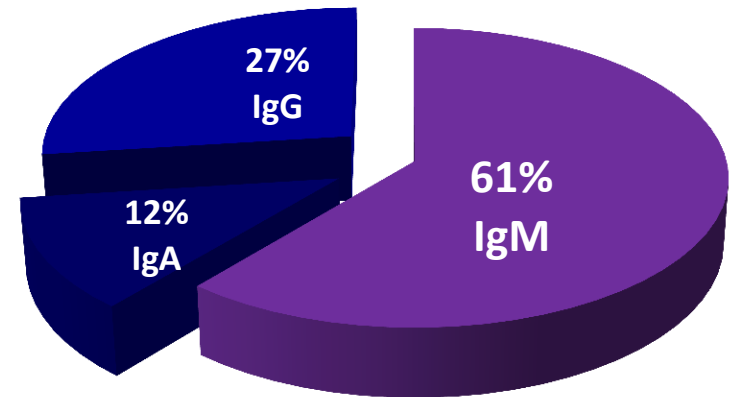
- ASX-listed microcap (\$25M) Company
- Oncology-focussed & clinical-stage
- Deep pipeline of novel cancer-specific IgM monoclonal antibodies
- Treasure-trove of novel cancer targets
- Significant intellectual property portfolio
- Network of Internationally-renowned collaborators
- Experienced Board of Directors and Management Team
- Headquarters in Melbourne, Australia. R&D centre in Würzburg, Germany

Technology Overview



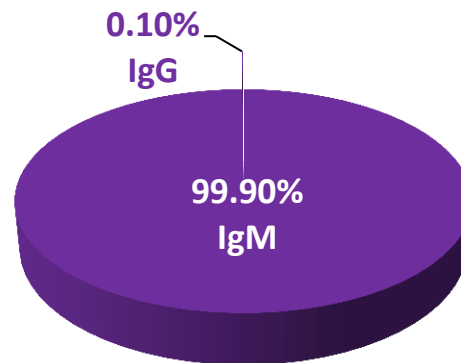
Spleen /
lymph nodes
isolated from
multiple
patients

→ *Proprietary antibody
capture technology*



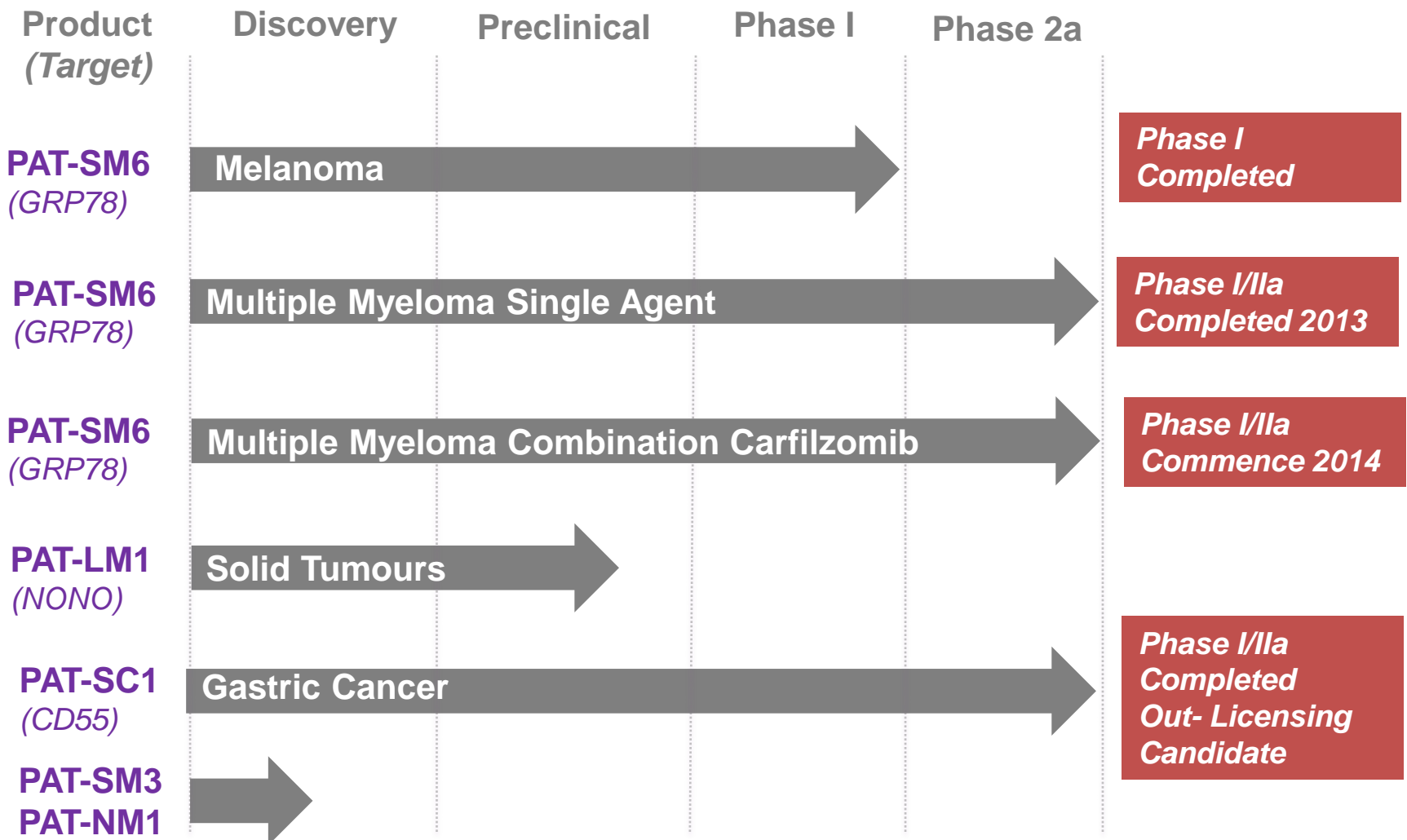
40,000 MAbs Captured

14 products
evaluated to
date



**>300 MAbs Passed Screening
Tests approx. 99.9% are IgM's**

Pipeline



PAT-SM6

Patrys' Lead Antibody: PAT-SM6

PAT-SM6:

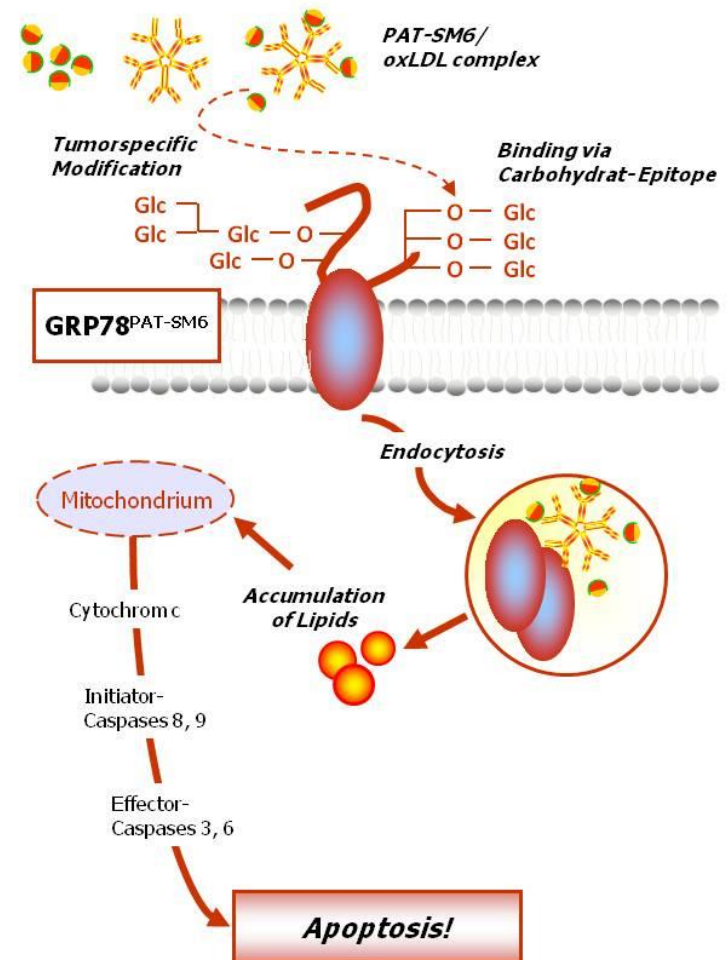
- IgM isotype, λ -light chain
- Isolated from stomach cancer patient
- Targets tumour specific epitope on GRP78
- Binds also to oxidised LDL and VLDL

Mode of Action:

- Internalisation upon binding of oxidised LDL & GRP78^{PAT-SM6}
- Internalisation triggers apoptosis

In vivo & In vitro Reactivity:

- Effective in multiple xenograft models
- Expression data show specific expression in wide range of tumours incl. melanoma and myeloma

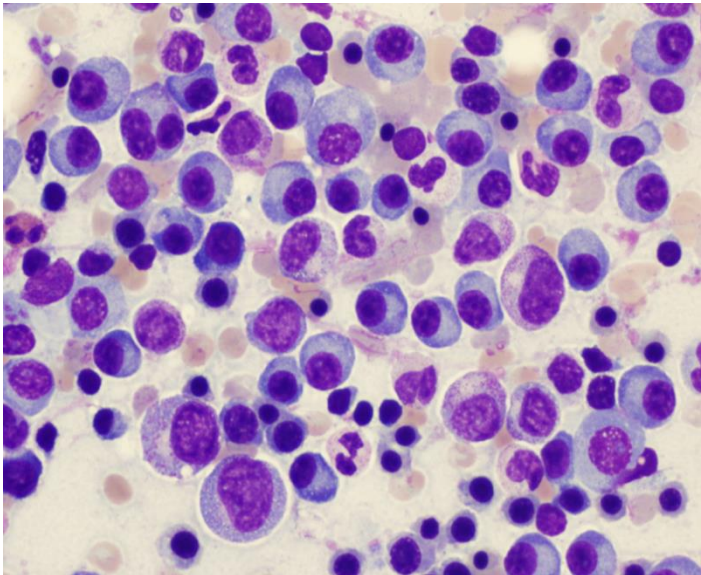


Multiple Myeloma – Opportunity

- Cancer of the plasma cells in bone marrow. Cells grow out of control and form tumours in solid bone, cause damage to other organs
- Estimated to be more than 220,000 cases worldwide and incidence increasing
- 5 year survival of ~30%
- Market expected to increase from ~\$8B (2013) to >\$15B (2018)
- Market currently dominated by 3 products:
 - Revlimid (net sales \$4.28B 2013)
 - Velcade (net sales \$3.77B 2013)
 - Kyprolis® (carfilzomib) (net sales \$272M 2013)
- Several MABs currently in clinical development but none approved to date. Likely to be used in combination therapies
- Significant interest in MM from both large pharmaceutical and biotechnology companies

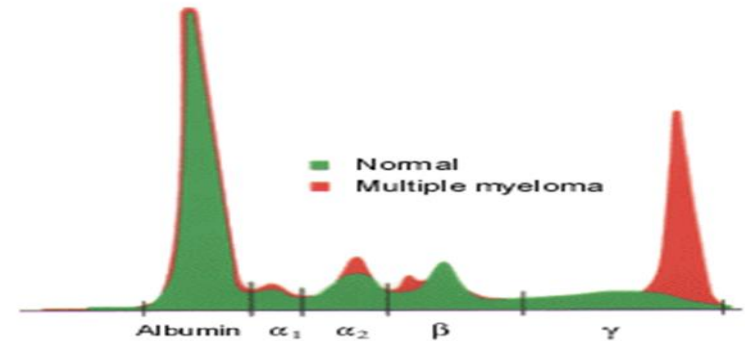
Multiple Myeloma – Pathology

- Abnormal plasma cells (myeloma cells) secrete lots of “useless” antibodies (M proteins)
- Myeloma cells crowd out other blood cells resulting in anaemia, thrombocytopenia (bleeding) and leucopenia (infections)

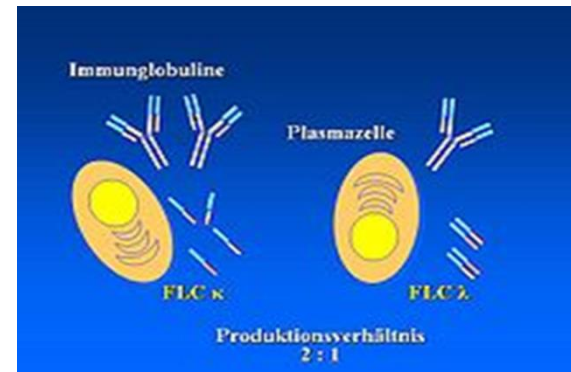


- Monoclonal gammopathy detected by electrophoresis

Serum Protein Electrophoresis

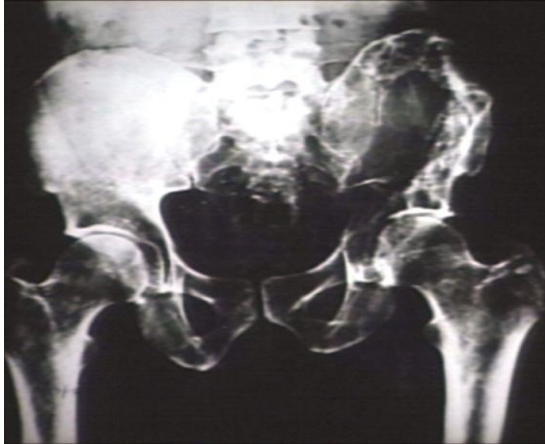


- Abnormal proteins (Bence Jones) detected in urine

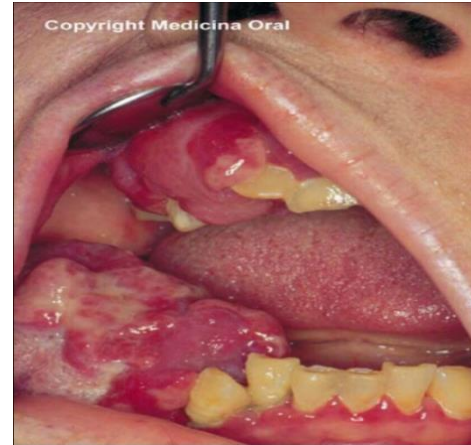


Multiple Myeloma – Presentation

- Bone disease and hypercalcaemia



- Abnormal protein deposits



- Bone marrow failure



Therapies for Multiple Myeloma

Proteasome inhibitors

- Bortezomib (Velcade)
- **Carfilzomib (Kymprolis)**

IMiDs

- Lanalidomide (Revlimid)
- Pomalyst (Pomalidomide)
- Thalidomide

Chemotherapeutics

- Melphalan
- Cisplatin
- Cyclophosphamide
- Doxorubicin

Stem cell transplantation

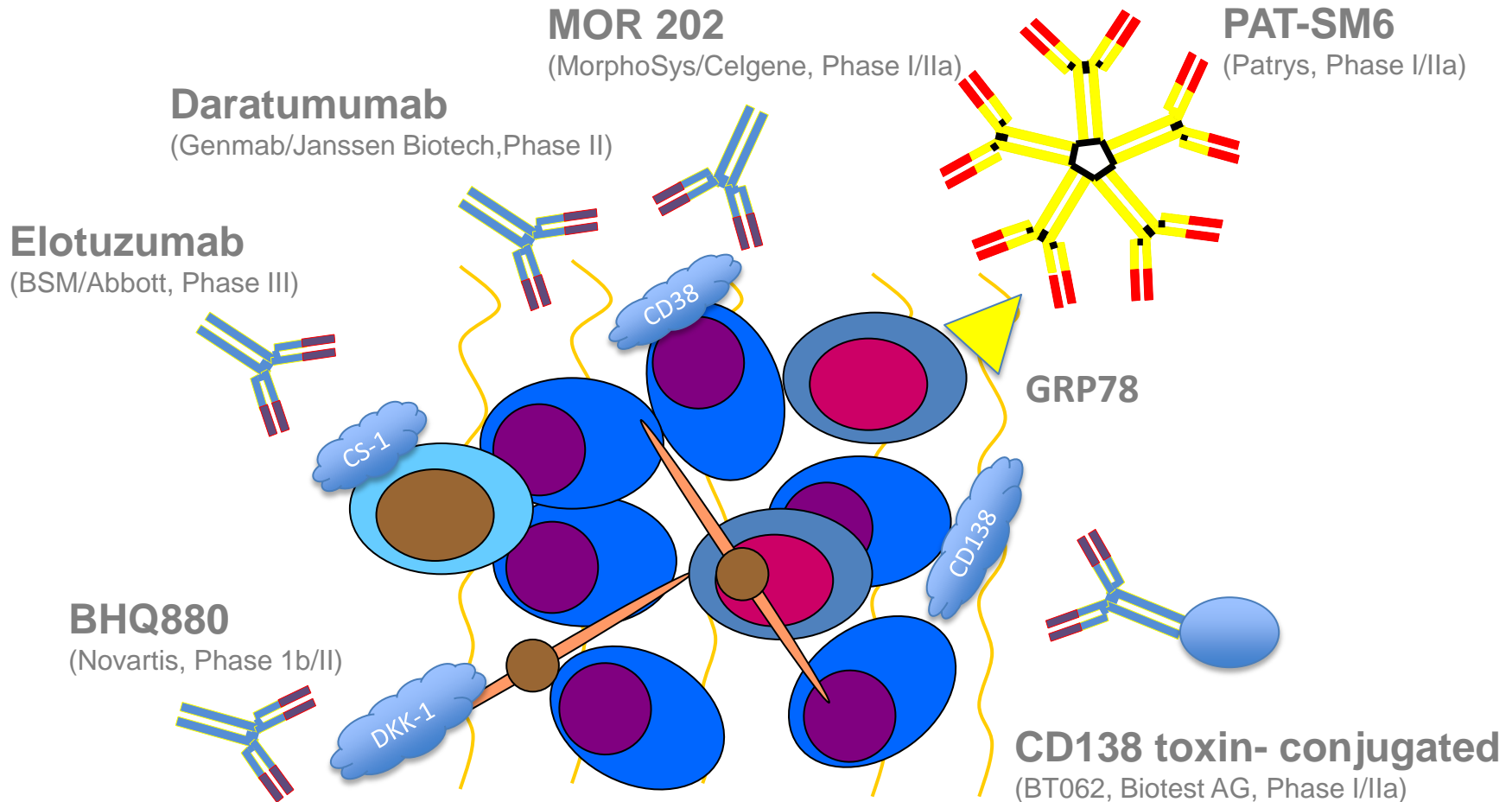
- Autologous
- Allogeneic

Clinical studies

- Small molecules
- Antibodies, peptides
- Immunotherapeutics



Antibodies in Clinical Trials for MM



Antibodies in all stages of clinical development

Phase I/IIa PAT-SM6 Monotherapy Trial

- 12 patients treated with 4 doses PAT-SM6 in 4 dose cohorts (0.3mg/kg, 1mg/kg, 3mg/kg and 6mg/kg/dose) evaluated at day +36 (end of trial)
 - 10 male, 2 female: median age 71 yrs
 - Received average 5 prior lines of therapy
- PAT-SM6 safe in all patients. No dose limiting toxicity (DLT), no related serious adverse events (SAE) and no related adverse event grade ≥ 4
- No evidence of immunogenicity. PK analysis showed half-life of 7 hrs
- PAT-SM6 specifically targets MM cells *in vivo* and stimulates significant immune responses
- 4/12 patients had stable disease (day +36 post treatment) with a significant reduction in protein M levels in the peripheral blood
- Patients who received prior treatment with proteasome inhibitors responded best to PAT-SM6
- Mean time to next therapy is 51 days (clinically significant). Two patients had stable disease for >130 days post treatment
- 10/11 patients responded positively to drugs that they had previously been resistant to (i.e. PAT-SM6 makes cancer cells more sensitive to other drugs)

Next Steps for PAT-SM6

- Execute new Phase I/II combination trial in relapsed / refractory MM:
 - Trial to be sponsored by Onyx Pharmaceuticals (Amgen)
 - PAT-SM6 in combination with carfilzomib (Kyprolis), 2nd generation proteasome inhibitor approved in USA July 2012
 - Patrys to provide PAT-SM6 (large-scale GMP production currently ongoing)
- Trial to be conducted in Germany under leadership of Professor Dr. Hermann Einsele (University Hospital, Würzburg)
- Patrys retains worldwide rights to PAT-SM6

PAT-LM1

PAT-LM1 Antibody & Target

PAT-LM1:

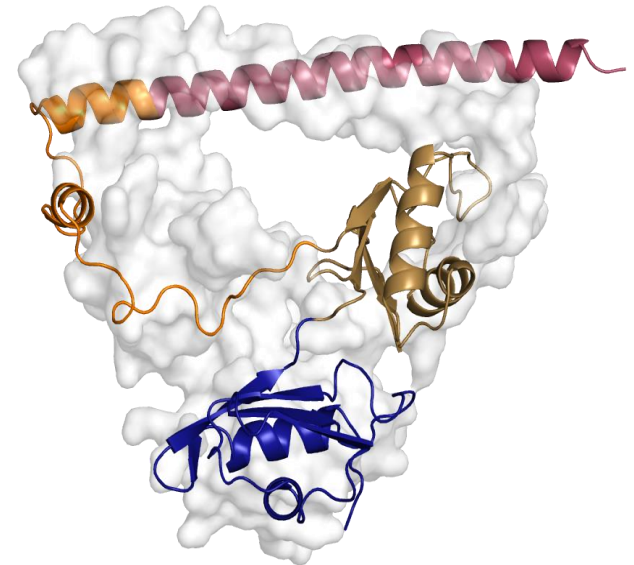
- IgM isotype, λ -light chain
- Isolated from a lung cancer patient
- Targets tumour-specific epitope of surface-expressed NONO (non-POU-domain-containing octomer binding protein)

Mode of Action:

- NONO mainly found in nucleus: involved in transcriptional & post-transcriptional gene regulation
- Unknown mechanism-of-transport to cell membrane

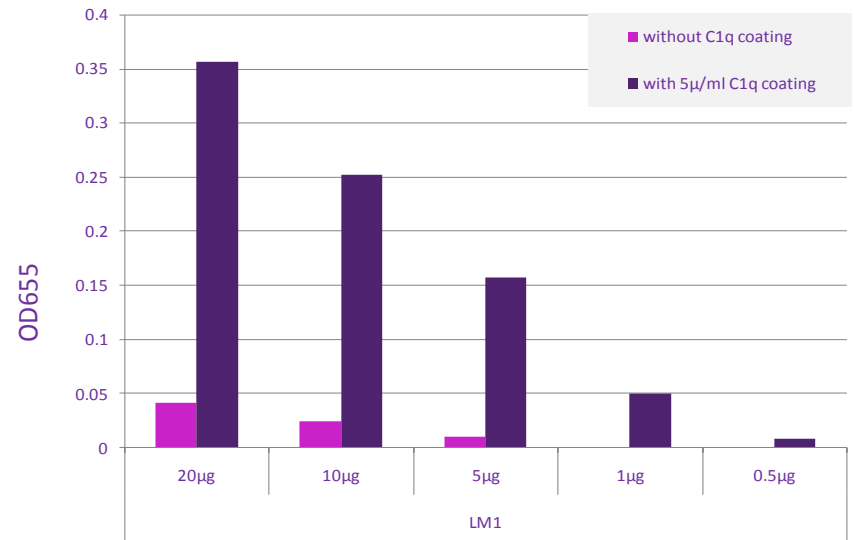
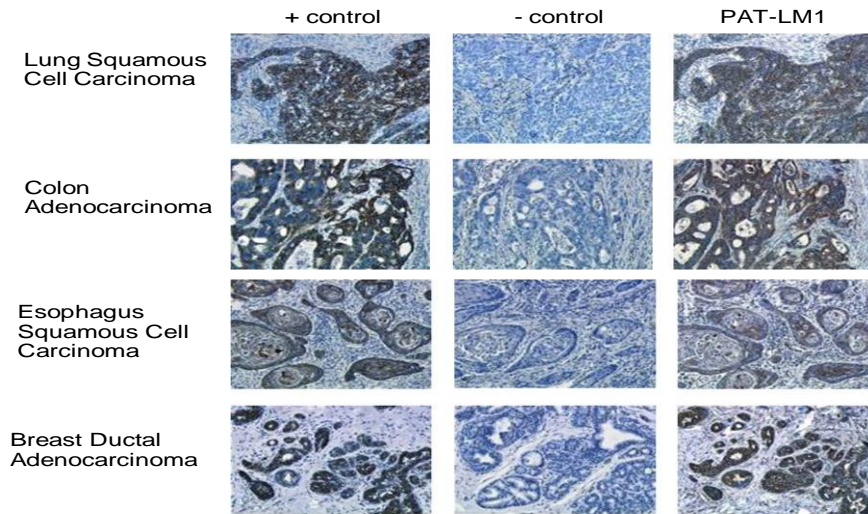
In Vivo & In Vitro Reactivity:

- Effective in several xenograft models
- Expression data show specific expression in a wide range of tumors incl. lung, pancreas, colon, leukaemias



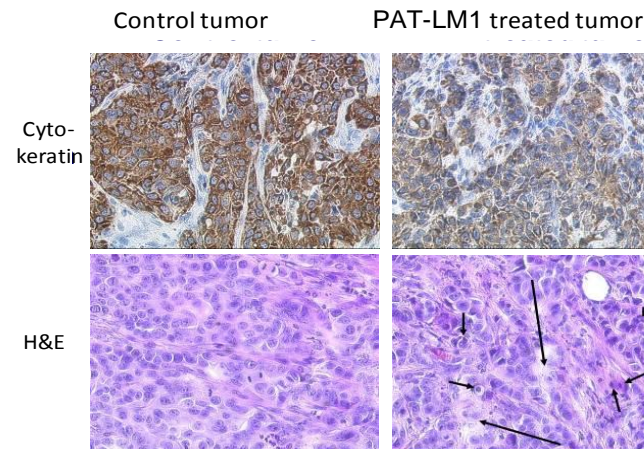
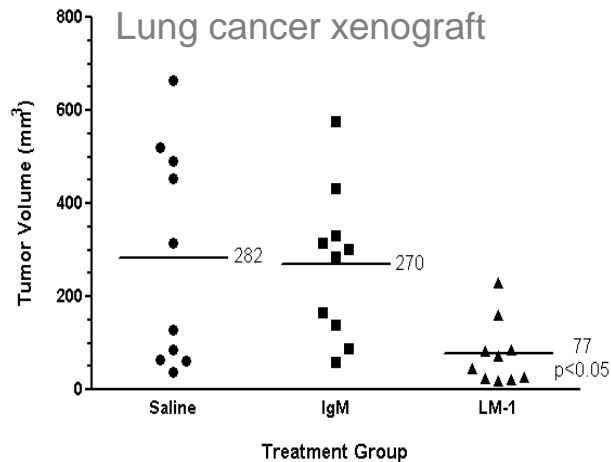
Crystal structure of NONO with PSPC1
Passon et al PNAS 2012

PAT-LM1 Preclinical



IHC staining with PAT-LM1 on tumour tissues

PAT-LM1 binds C1q, suggestive of CDC



PAT-LM1 reduced tumour volume & induced cell-death

- Apoptotic cells
- Regression
- Necrosis

2014 Key Milestones

Key Milestone	Projected Timing (CY)	
PAT-SM6: <ul style="list-style-type: none"> Final data from MM trial Complete GMP manufacturing Commence combination Phase I/II MM trial with Onyx (Amgen) Preclinical data published 	1Q, 2014 1H, 2014 2014 2014	✓
PAT-LM1: <ul style="list-style-type: none"> Commence manufacturing and scale-up work / Toxicology Preclinical data published 	2Q, 2014 1H, 2014	
PAT-SC1: <ul style="list-style-type: none"> Preclinical & clinical trial (gastric cancer) data published Out-licensing deal 	1Q, 2014 2014	✓
Discovery Abs: <ul style="list-style-type: none"> Target work on PAT-SM3 & 3 other early stage antibodies 	2014	

For Further Information

Contact Details:

Dr. Marie Roskrow, Chief Executive Officer / Managing Director

Mr. Roger McPherson, Chief Financial Officer

Ph: +61 3 9670 3273

Email: info@patrys.com

Website: www.patrys.com