



# TORO ENERGY LIMITED

## PDAC Presentation

March 2011

*Developing its 100% owned Australian  
uranium project with production target of  
2013H2*

# Disclaimer



This presentation has been prepared by Toro Energy Limited ("Toro"). The information contained in this presentation is a professional opinion only and is given in good faith. Certain information in this document has been derived from third parties and though Toro has no reason to believe that it is not accurate, reliable or complete, it has not been independently audited or verified by Toro.

Any forward-looking statements included in this document involve subjective judgement and analysis and are subject to uncertainties, risks and contingencies, many of which are outside the control of, and maybe unknown to, Toro. In particular, they speak only as of the date of this document, they assume the success of Toro's strategies, and they are subject to significant regulatory, business, competitive and economic uncertainties and risks. Actual future events may vary materially from the forward looking statements and the assumptions on which the forward looking statements are based. Recipients of this document ("Recipients") are cautioned to not place undue reliance on such forward-looking statements.

Toro makes no representation or warranty as to the accuracy, reliability or completeness of information in this document and does not take responsibility for updating any information or correcting any error or omission which may become apparent after this document has been issued.

To the extent permitted by law, Toro and its officers, employees, related bodies corporate and agents ("Agents") disclaim all liability, direct, indirect or consequential (and whether or not arising out of the negligence, default or lack of care of Toro and/or any of its Agents) for any loss or damage suffered by a Recipient or other persons arising out of, or in connection with, any use or reliance on this presentation or information. All amounts in A\$ unless stated otherwise.

# Toro Energy Summary

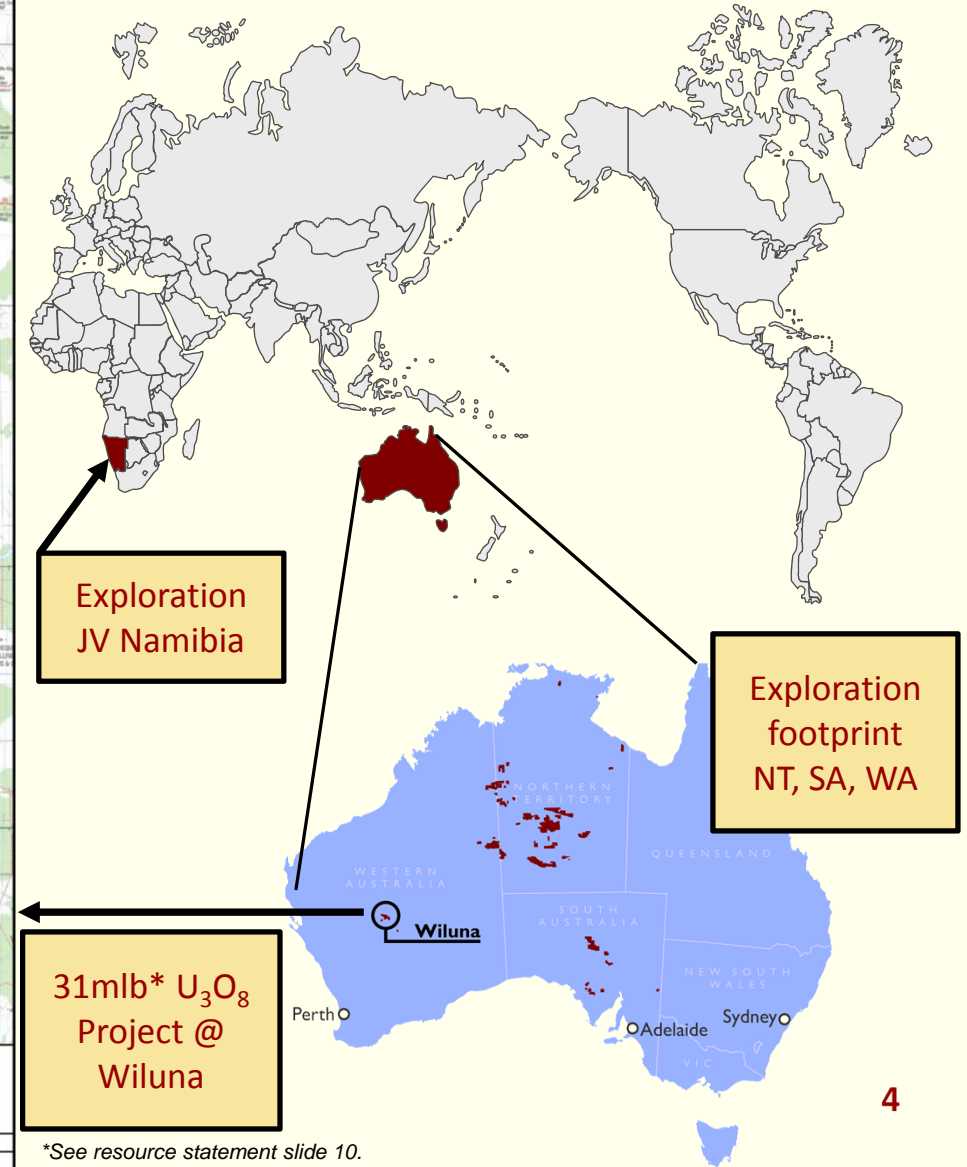
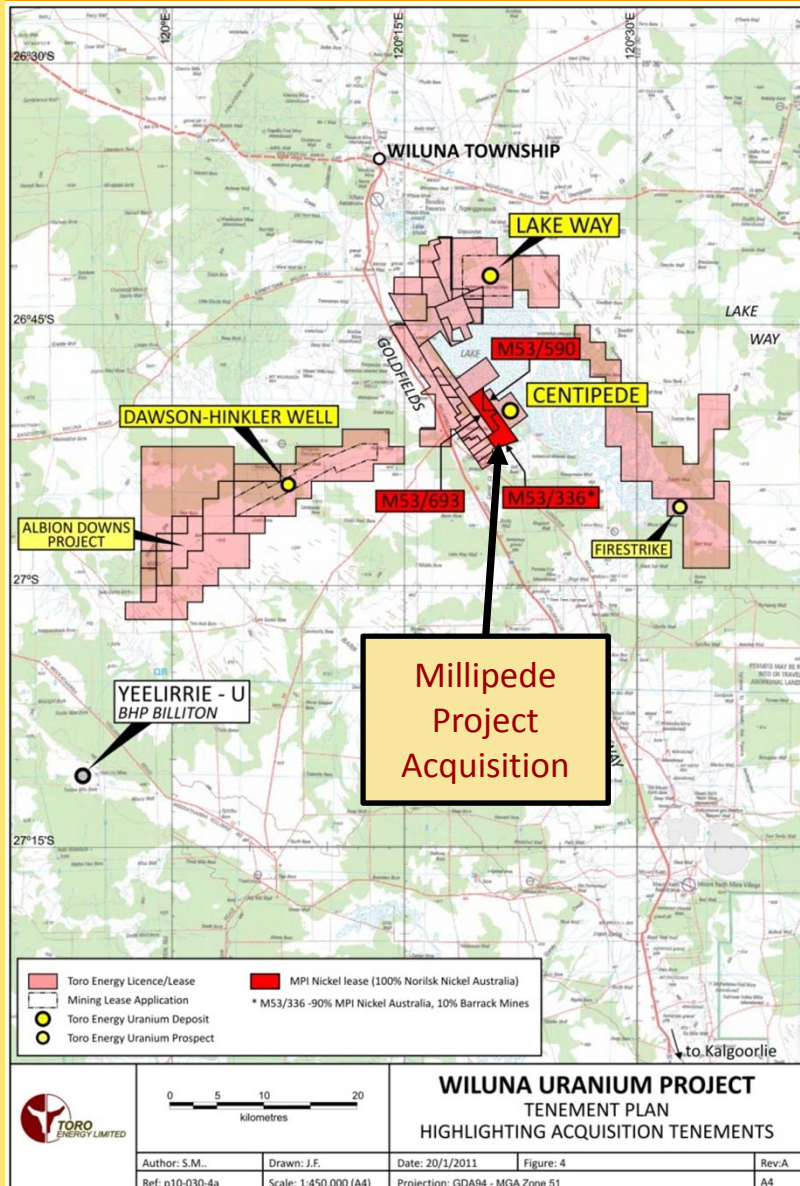


*Toro Energy Ltd is a uranium focused Australian resources company advancing one of the first new uranium projects in Western Australia. Toro has:*

- *100% of the expanding 31mlb\* U<sub>3</sub>O<sub>8</sub> Wiluna Uranium Project;*
- *ERMP (EIS) submitted for Centipede and Lake Way deposits at Wiluna*
  - *Technical work leading to final engineering DFS underway*
- *40,000km<sup>2</sup> exploration portfolio in uranium friendly jurisdictions;*
- *100% of recent uranium discovery "Theseus", Lake Mackay, WA;*

*Toro remains on track to achieve first uranium production from Wiluna in 2013.*

# Toro Assets



\*See resource statement slide 10.

# Toro Today



## Capital Structure

Exchanges	ASX: TOE
Share Price (Mar 2011)	A\$0.145
Options (unlisted)	21.69m
Shares	964.95m
<b>Fully Diluted Market Cap</b>	<b>A\$140m</b>
Cash (Dec 31 2010)	A\$36m
Debt	Nil
<b>Enterprise Value</b>	<b>A\$104m</b>
12 Month High / Low	A\$0.18 / \$0.07
Largest Shareholder – OZ Minerals Ltd	42.5%

## Share Price Graph



## The Board

Erica Smyth	Non-Executive Chairman
Greg Hall	Managing Director
Derek Carter	Non-Executive Director
Peter Lester	Non-Executive Director
John Nitschke	Non-Executive Director
Andrew Coles	Non-Executive Director (OZ Minerals)

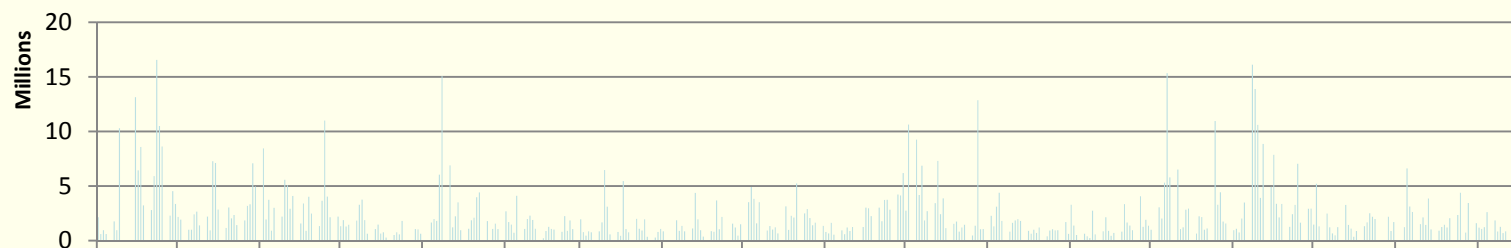
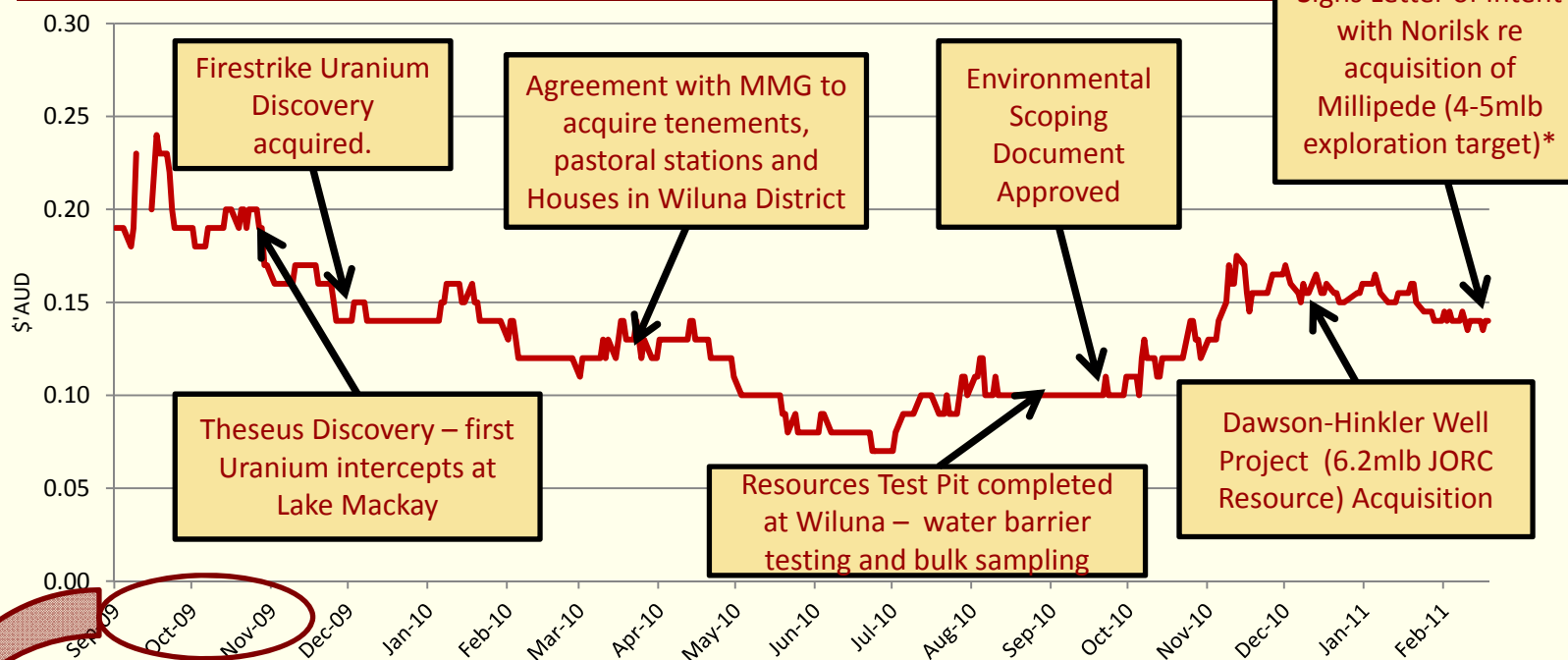
## Management

Greg Hall	Managing Director
Todd Alder	General Manager – Finance & Corporate
Mark McGeough	General Manager – Exploration
Simon Mitchell	General Manager – Business Development
Richard Dossor	General Manager – Wiluna Project
Richard Yeeles	Approvals and Community Director

# Recent Major Achievements



## 2010 – Project Consolidation, Approvals progress and discovery



**...A\$61m raised at \$0.15/share 2009Q4**

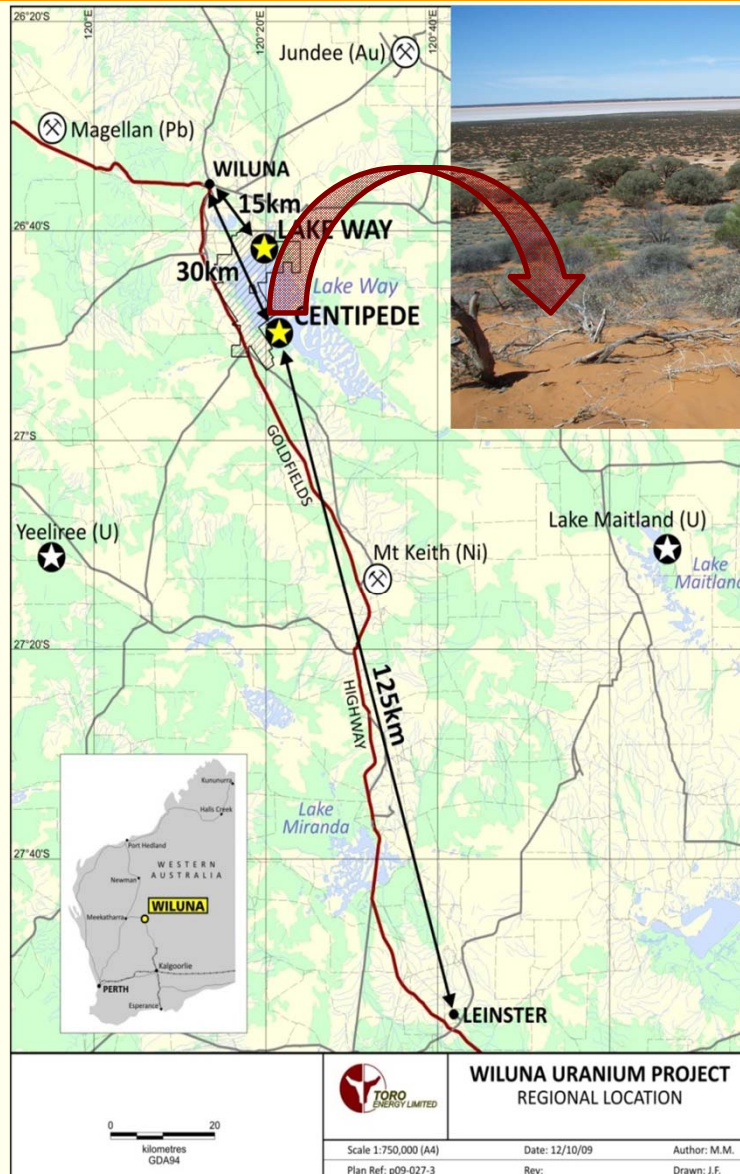
\* Refer to Exploration Target Statement on Slide 22



## The Wiluna Uranium Project



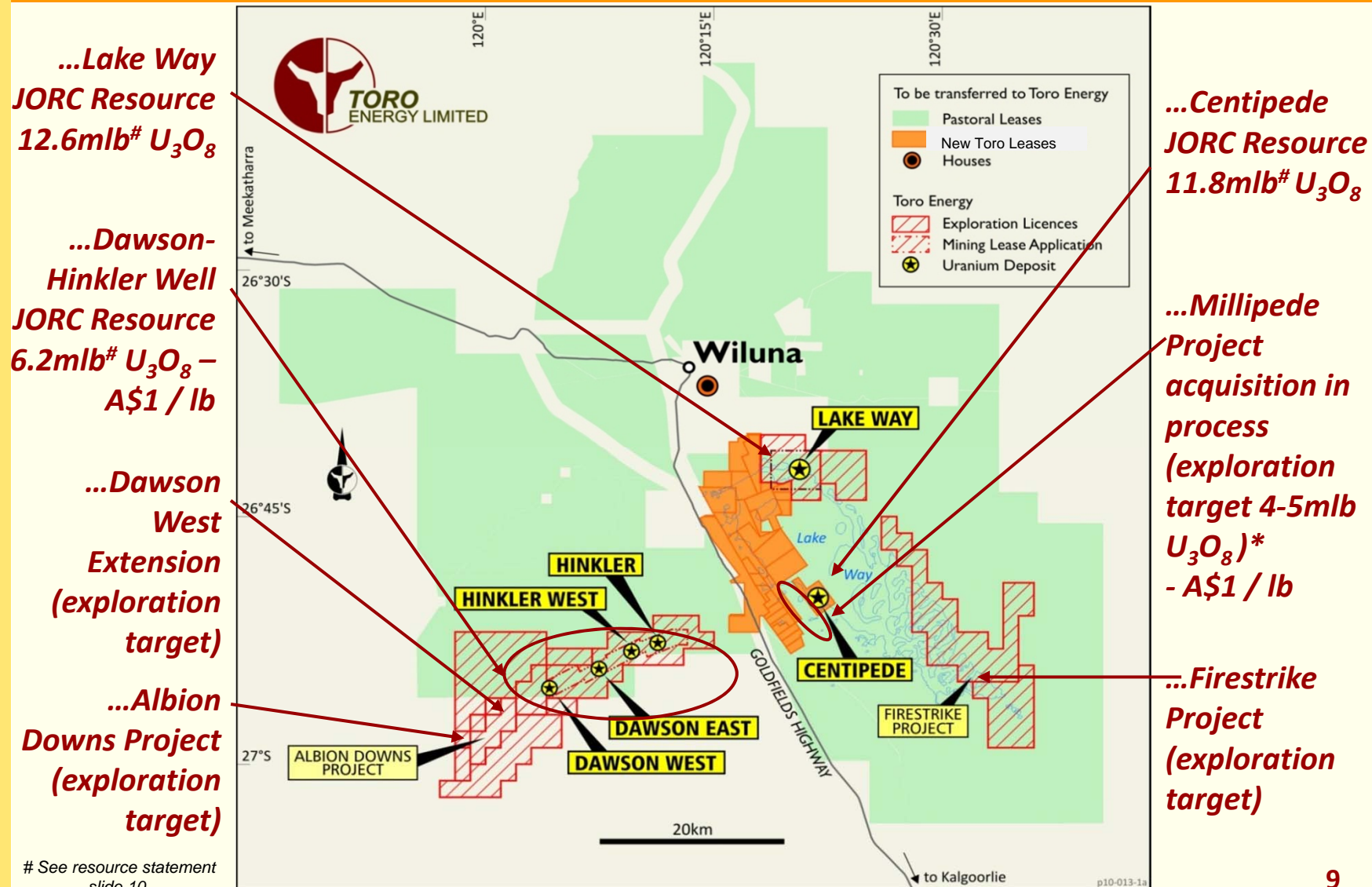
# Wiluna Uranium Project: Overview



- **Mining** – shallow (<10m deep) open pit strip selective mining – continuous cutting – 2mtpa ore – 650ppm U<sub>3</sub>O<sub>8</sub> head grade into plant
- **Processing** – Alkaline (tank) leach with direct precipitation – 86% recovery
- **Production** – 1,200t UOC (1,000 tpa U<sub>3</sub>O<sub>8</sub>)
- **Transport** – road/rail shipment via ports of Adelaide or Darwin – 4 x 20ft containers monthly
- **Tailings** – storage within mined out pits and covered, progressive rehabilitation
- **Status** – Process testwork, DFS & approvals



# Wiluna Uranium Project Consolidation



# See resource statement slide 10.

\* Refer to Exploration Target Statement on slide 22

# Wiluna Uranium Project: Resources



As at Dec 2010	Category	Resource	Grade*		Contained U3O8#	
		Mt	ppm	% U3O8	tonnes	MIbs
Centipede, WA	Measured	0.3	588	0.059	176	0.4
	Indicated	7.7	619	0.062	4,754	10.5
	Inferred	1.7	251	0.025	424	0.9
	TOTAL	9.7	554	0.055	5,355	11.8
Lake Way, WA	Inferred	10.5	543	0.054	5,718	12.6
	TOTAL	10.5	543	0.054	5,718	12.6
<i>...new geological interpretation, potential resource extension</i>						
Dawson-Hinkler, WA	Inferred	9.50	293	0.029	2,800	6.2
	TOTAL	9.5	293	0.029	2,800	6.2
WILUNA TOTAL		29.71	467	0.05	13,870	30.6

\*200ppm cut-off  
# Refer Competent Persons  
Statements, Page 22

*...grade to be reviewed using  
Uniform Conditioning*

*...JORC resource base  
increased by 25% in 2010*

## Near Term Objectives

- Expansion of Centipede & Lake Way resource & conversion of Lake Way Resource to Indicated
- Redefinition of Dawson-Hinkler Resource with Uniform Conditioning
- Addition of resources from Firestrike, Albion Downs and Millipede

# Wiluna Uranium Project: Trial Mining

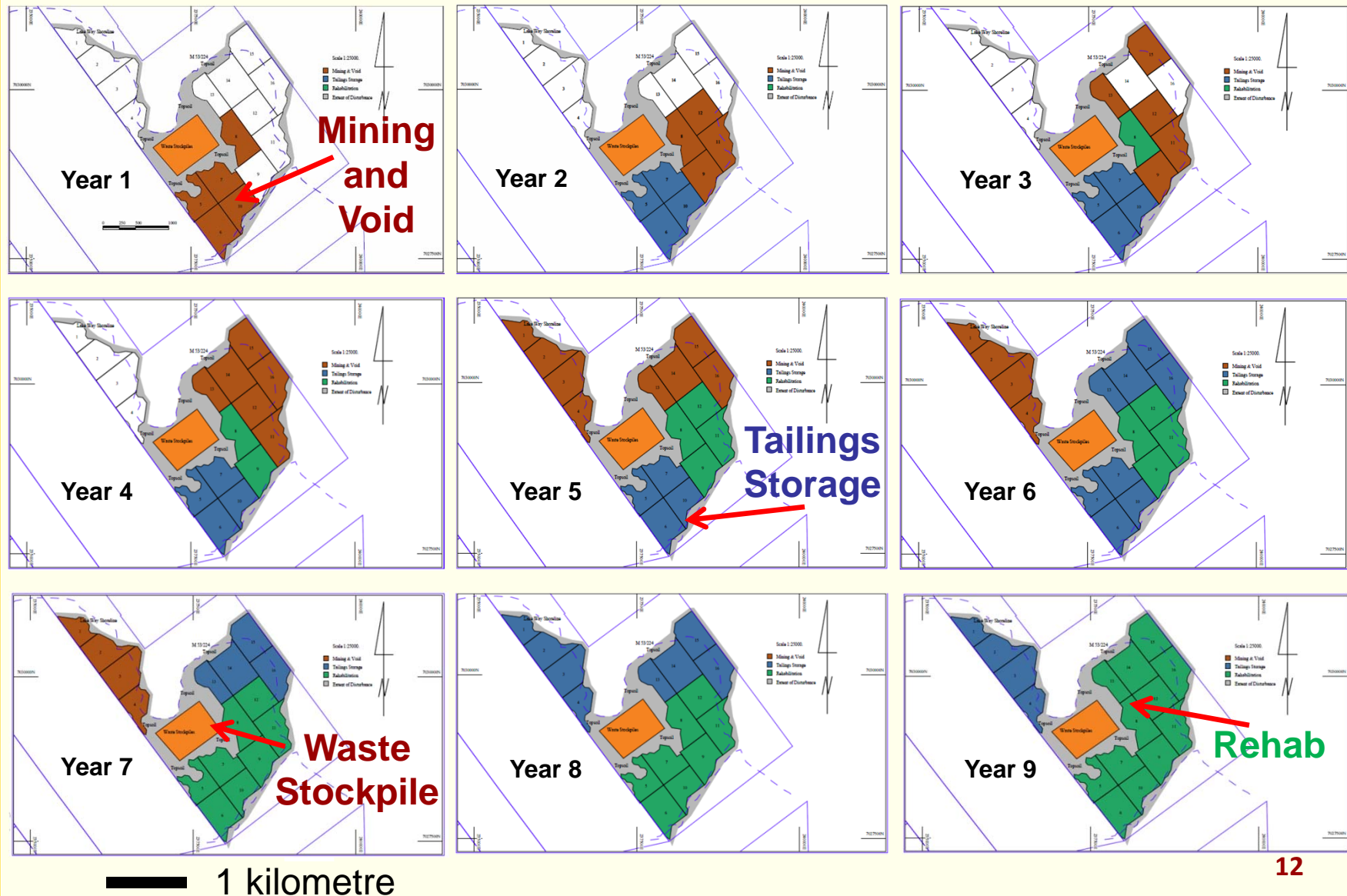


- Ore is within hypersaline water table – pump control requirements determined
- Geopolymer barrier tested – water management principles established
- Vermeer continuous miner and grade control system tested – selective mining technique demonstrated – 650ppm headgrade into plant
- Bulk sample taken for benchscale and pilot plant testing to provide design parameters of alkaline leach process -





# Wiluna Uranium Project: Conceptual Mine Scheduling



# Wiluna Uranium Project: Processing



- Alkaline Tank Leach selected:
  - process control ability;
  - maximising recovery;
  - longer project life; and
  - long term uranium marketing .
- Pre-Feasibility parameters – 86% overall recovery, 92deg leach, direct precipitation
- Toro update lab work in 2009 & 2011 updating information on representative samples



- Toro utilising recovery and precipitation techniques proven in the very successful Yeelirrie Pilot Plant in 1980's updated for current technologies.
- Dilute saline mine water used in process
- Bulk sample taken from test pit – pilot plant test work in March/April 2011
- Results from pilot plant to determine final process parameters for DFS



# Wiluna Uranium Project: Milestones



- Wiluna Resource Upgrade (additional upgrade to Wiluna resource in 2011q2) ✓
- Wiluna Optimisation Study (end 2009) – A\$265M project cost – US\$36 / lb OC ✓
- Regional Consolidation (Millipede, Dawson-Hinkler, Firestrike, Albion Downs) ✓
- Trial Mining/ Test Pit completed ✓
- Environmental Scoping Document (ESD) complete ✓
- Draft Environmental Review & Management Plan (ERMP) submitted ✓
- Completion of Process Testwork In process, due 2011q2
- DFS & financing In process, due 2011q4 – 2012 q1

	2009			2010			2011			2012			2013		
Approvals															
Metallurgical Testing / Pilot Plant															
Bankable Feasibility Study															
Indigenous Consultation															
Off-take Agreements/ Financing															
Decision to Construct															
Design and Construct															
Commissioning & Production															

*...project development decision in 2012*



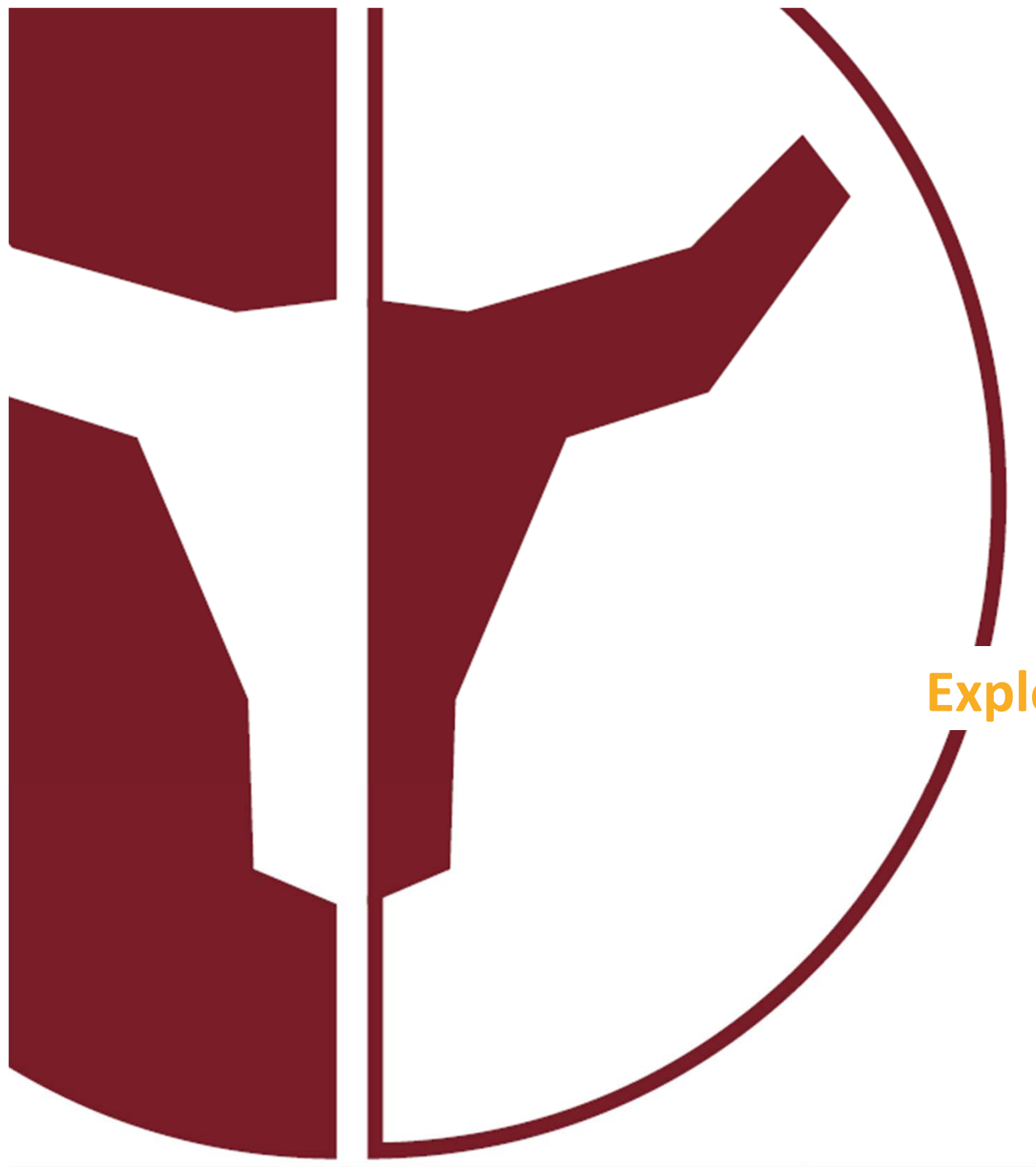
*...first production targeted for 2013H2*

# Wiluna Uranium Project: Strengths



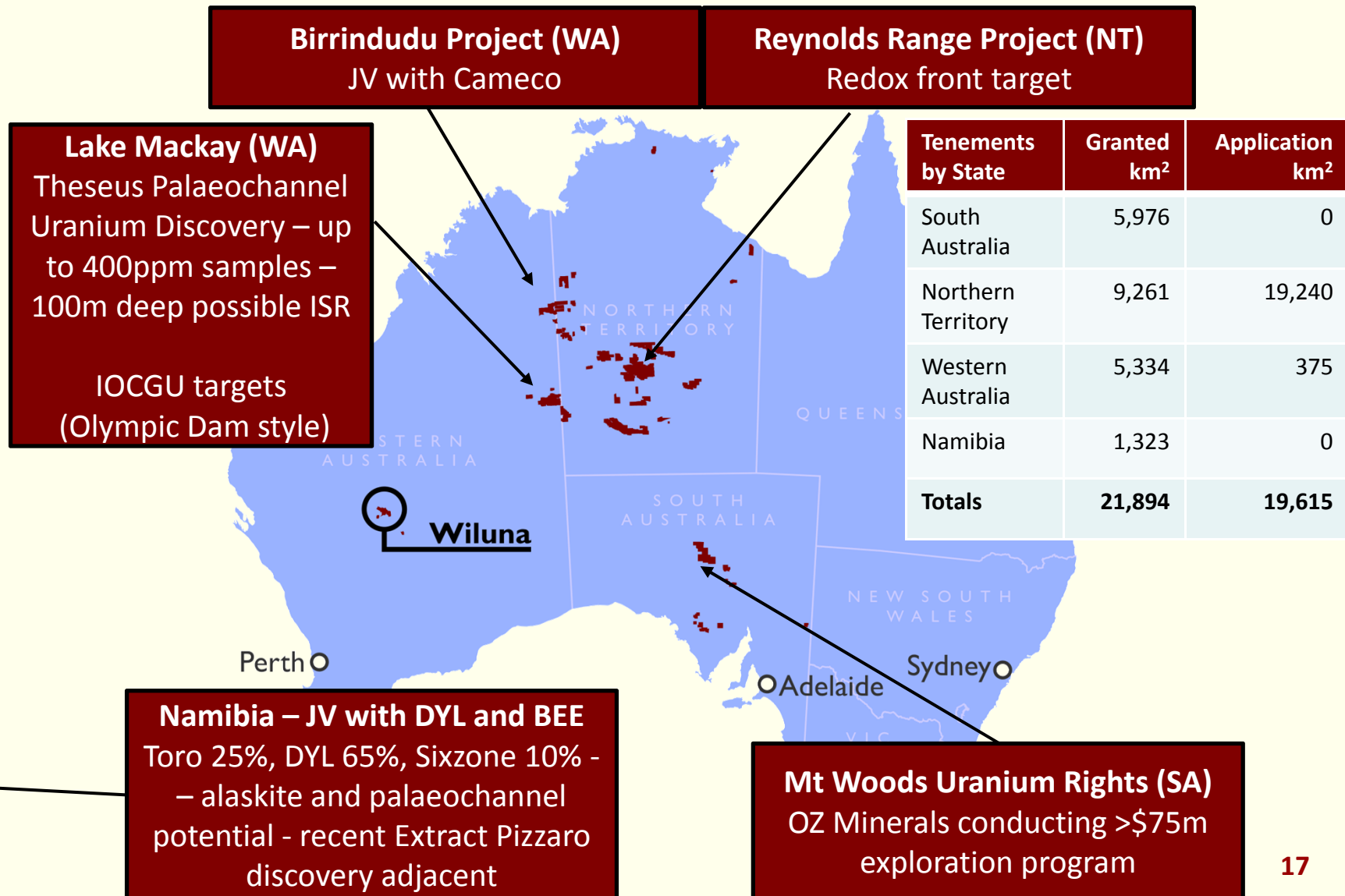
- Significant Australian Deposit
- Australia as a Tier 1 Supply Country
- Supportive State and Federal Governments
- Good Infrastructure Context and mining friendly location
- Potential Mine life recently extended by regional consolidation
- Long term off-take agreement discussions underway
- One of the most advanced new uranium projects in Australia





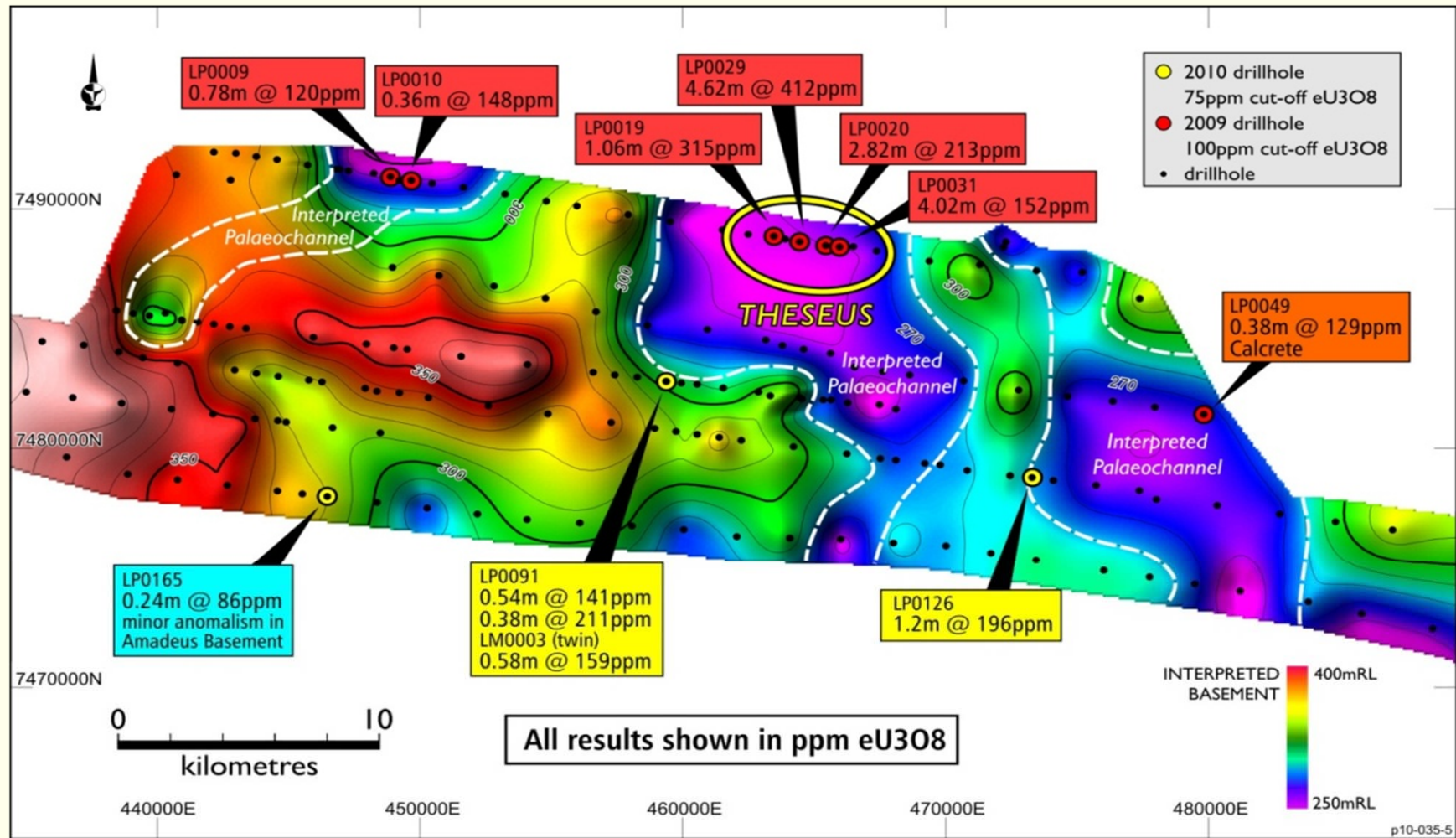
Exploration

# Key Exploration Projects



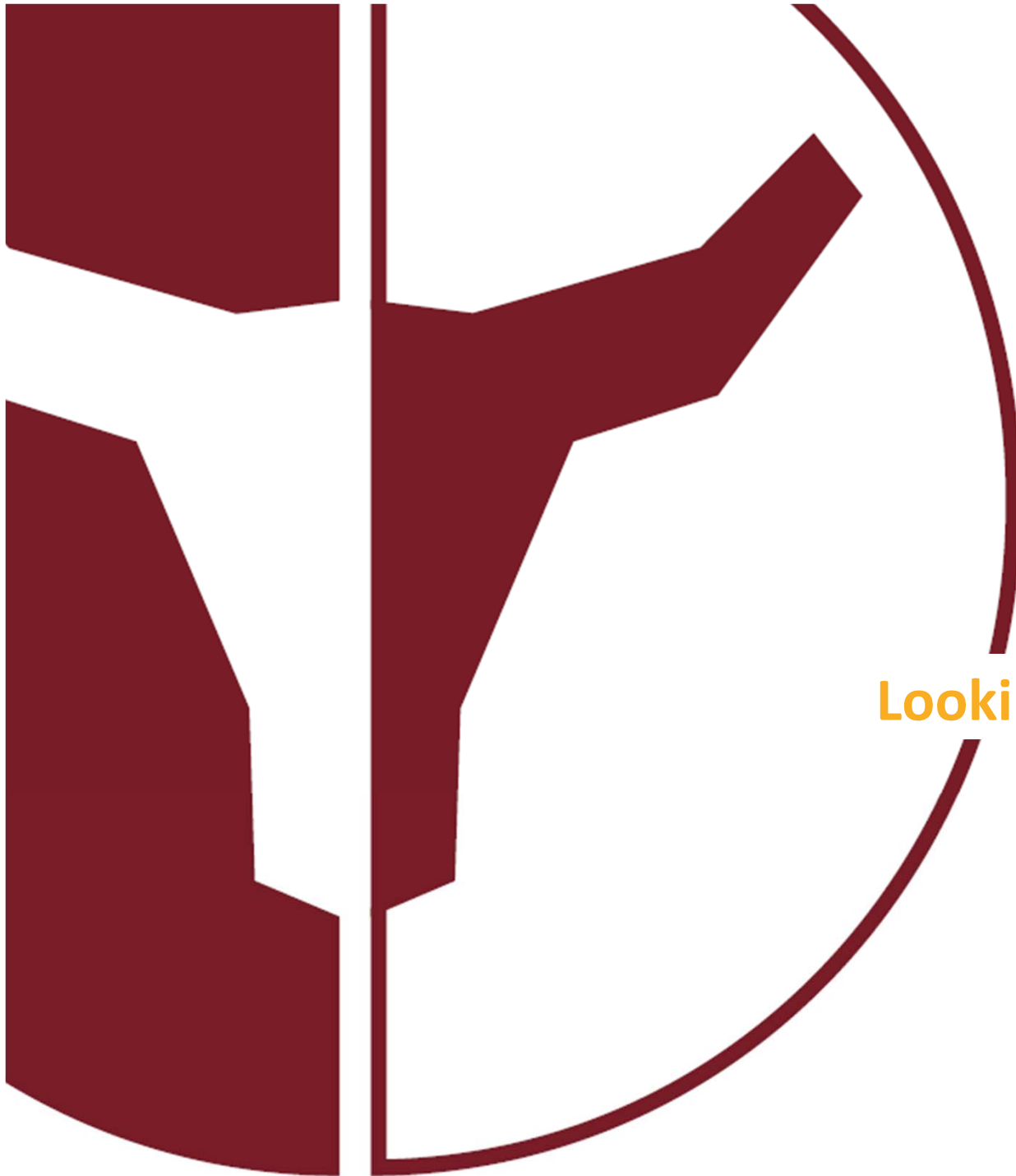


# Lake Mackay Project (WA): Theseus



Approximate footprint of Four Mile East/West





**Looking Ahead**

# News flow and value add



## Wiluna Uranium Project – progressing approvals and the DFS Project

- Draft ERMP/EIS now submitted with public exhibition period to follow
- Pilot plant test work results
- JORC Resource update
- Definitive feasibility study conclusion
- Product marketing, project finance, strategic partner/ investor search

## Exploration initiatives – extensive drilling (>20,000m of follow-up)

- Lake Mackay – drilling the new Theseus uranium discovery 2011q1/q2
- Birrindudu/ Reynolds Range – follow up drilling 2011q2/q3
- Leverage Wiluna Project expertise to assess broader regional opportunities 2011

## Market fundamentals - long term uranium demand fundamentals remain strong

- Significant construction pipeline and changes to rules for existing nuclear nations
- Continuation of delayed new supply and production issues at existing operations
- Financial investors return to the market (mostly on the spot)
- Long term pricing has returned to +US\$70/lb U<sub>3</sub>O<sub>8</sub> supporting the development of new projects that are well positioned for 2013-14

# Contact



## **Greg Hall**

Managing Director

## **Simon Mitchell**

General Manager – Business Development

## **Toro Energy Limited**

Corporate Office

3 Boskenna Avenue

NORWOOD

South Australia 5067

Telephone: +61 8 8132 5600

Facsimile: +61 8 8362 6655

Email: [info@toroenergy.com.au](mailto:info@toroenergy.com.au)

Website: [www.toroenergy.com.au](http://www.toroenergy.com.au)



# Competent Persons Statements



*The information in this report that relates to Mineral Resources at Lake Way and Centipede is based on information compiled by Mr Daniel Guibal who is a Fellow of the Australasian Institute of Mining and Metallurgy (AusIMM). Mr Guibal is a fulltime employee of SRK Consulting and has sufficient experience which is relevant to the style of mineralisation and type of deposit under consideration and to the activity he is undertaking to qualify as a Competent Persons as defined in the 2004 Edition of the 'Australasian Code for Reporting of Exploration Results, Mineral Resources and Ore Reserves'. Mr Guibal consents to the inclusion in this release of the matters based on his information in the form and context in which it appears.*

*The information in this report that relates to Mineral Resources at Dawson-Hinkler Well is based on information compiled by S. Mann MAusIMM, S. Gatehouse MAIG and A. van der Heyden MAusIMM. Messrs Mann, Gatehouse and van der Heyden have sufficient experience which is relevant to the style of mineralisation and type of deposit under consideration and to the activity which they are undertaking to qualify as a Competent Person as defined in the 2004 Edition of the 'Australasian Code for Reporting of Exploration Results, Mineral Resources and Ore Reserves'. Mr Mann is a full-time employee of U308 Limited. Messrs Gatehouse and van der Heyden are employees of Hellman & Schofield Pty Ltd. Each of the above named consents to the inclusion of the information in this announcement in the form and context in which it appears.*

*Information in this report is based on Exploration Results compiled by Mr Mark McGeough who is a Member of the Australasian Institute of Mining and Metallurgy. Mr McGeough is a full-time employee of Toro, and has sufficient experience which is relevant to the style of mineralisation and type of deposit under consideration and to the activity he is undertaking to qualify as a Competent Person as defined in the 2004 Edition of the 'Australasian Code for Reporting of Exploration Results, Mineral Resources and Ore Reserves'. Mr McGeough consents to the inclusion in this release of the matters based on his information in the form and context in which it appears.*

*Information in this report is based on information compiled by Mr Craig Gwatkin who is a Member of the Australasian Institute of Mining and Metallurgy. Mr Gwatkin is a full-time employee of Toro, and has sufficient experience which is relevant to the style of mineralisation and type of deposit under consideration and to the activity he is undertaking to qualify as a Competent Person as defined in the 2004 Edition of the 'Australasian Code for Reporting of Exploration Results, Mineral Resources and Ore Reserves'. Mr Gwatkin consents to the inclusion in this release of the matters based on his information in the form and context in which it appears.*

## **Millipede Exploration Target Statement**

Exploration Target Range*				
Tonnes Mt	Grade %	Grade ppm	Contained Uranium t	Contained Uranium Mlb
4 – 6	0.04-0.06	350-550	1,800-2,300	4 – 5

*NOTE: The total potential tonnage and grade is conceptual in nature, and Toro needs to determine whether there has been sufficient exploration to define a Mineral Resource, and while Toro has confidence in this target statement, it is uncertain if this work will result in the determination of a Mineral Resource. See slide 13 for details.*