

**Western Desert Resources, a diversified resources business with a portfolio of quality mineral exploration assets in the Northern Territory.**

Western Desert Resources' business is built on the exploration of its substantial portfolio of iron ore, gold, base metals and uranium projects in the world-class mining provinces of Australia and will continue to grow through the generation and acquisition of new opportunities and resources.

#### FAST FACTS

ASX Code	WDR
Issued Shares	207m
Market Cap	A\$73M

#### DIRECTORS

Rick Allert	Chairman
Norm Gardner	MD
Mick Ashton	Director
Graham Bubner	Director
David Cloke	Director
Phillip Lockyer	Director
Scott Perrin	Director

#### COMPANY HIGHLIGHTS

##### Iron Ore

- Roper Bar & Mountain Creek projects (NT)
- Hematitic iron ore
- Total Inferred and Indicated Mineral Resource estimates of 312Mt @ 40% Fe including DSO of 14.5Mt @ 57.4% Fe
- Low Impurities
- Mine development underway
- Proximity to coast and markets

##### Gold / Copper

- East Rover Project near Tennant Creek (NT)

#### CONTACT DETAILS

Level 1, 26 Greenhill Rd  
WAYVILLE, SA, 5034  
T: +61 8 8177 8800  
info@westerndesertresources.com.au

ABN: 48 122 301 848

## NEW DRILL RESULTS FROM ROPER BAR IRON ORE PROJECT AREA F WEST

#### Key Points:

- Drilling at Roper Bar iron ore project Area F (West) confirms continuity of mineralisation along strike and down dip.
- More than six kilometres of strike length defined.
- Maiden JORC compliant Indicated Mineral resource estimate for Area F (West) due by end of 2011.
- Will add to global outcropping JORC compliant Inferred and Indicated Mineral resource estimate base.
- Drilling commenced on new prospect areas at Mountain Creek Project.

The Directors of Western Desert Resources Limited (ASX: WDR) are pleased to advise that recent assay results from drilling at Area F (West) have revealed further high grade hematite zones and confirmed continuity of the mineralisation.

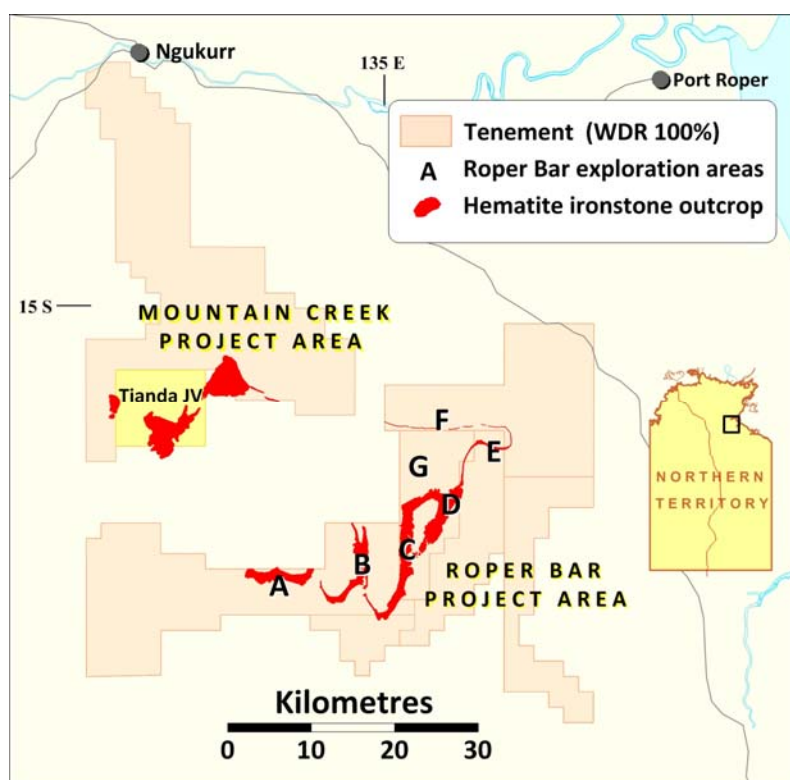


Figure 1. Roper Bar Iron Ore Province location plan

Drilling commenced for field season 2011 in June following an extended wet season. A second rig commenced operations in July. Activities have focussed to date on high grade zones at Area F (West), which is immediately along strike from Area F (East), where previous drilling has established a JORC compliant Inferred and Indicated Mineral resource estimate of 20.4 Mt @ 48.7 % Fe, including DSO of 9.8Mt @ 58.3% Fe.

Assay results received for Area F (West) confirm continuity of the DSO hematite mineralisation, which occurs as two bands of ore dipping moderately to the north. The drill program confirms the continuity of the mineralisation along strike and at depth. A maiden JORC compliant Inferred Mineral resource estimate is scheduled for completion later this year. The DSO mineralisation outcrops along a small ridge, which will facilitate extraction in the early stages of mine development.

A drillhole plan is included in Figure 2, and drillhole cross-sections through the ore body are shown in Figures 3-5. The assay results from all drill holes are listed in Table 2; significant results are shown in Table 1.

**Table 1. Roper Bar iron ore project Area F (West) – Assay results from RC drilling.**

HOLE ID		From	To	Int	Fe	SiO2	Al2O3	P	LOI
RBDD1000		24.3	25.9	1.6	61.2	11.5	0.7	0.004	0.4
RBDD1000	and	33	36	3	65.9	3.4	1.4	0.004	2.0
RBRC1029		70	82	12	53.7	14.0	3.6	0.009	3.5
RBRC1029	Incl.	71	76	5	65.6	3.5	1.2	0.010	1.0
RBRC1030		24	29	5	59.4	9.2	3.5	0.007	1.9
RBRC1033		43	45	2	64.2	5.7	1.5	0.007	0.7
RBRC1033	and	53	55	2	61.6	6.9	2.5	0.004	1.6
RBRC1037		33	35	2	61.6	7.6	2.8	0.003	1.3
RBRC1055		8	10	2	60.0	10.4	2.2	0.005	1.4
RBRC1056		13	19	6	57.1	14.1	2.6	0.004	1.4

Exploration and resource drilling is continuing at other deposits and prospect areas in the Roper Bar Iron Ore Province. A summary of drilling activity to date for field season 2011 and estimated schedule of proposed future announcements is outlined in Table 2 below.

**Table 2. Drilling progress at Roper Bar project and anticipated publication of results.**

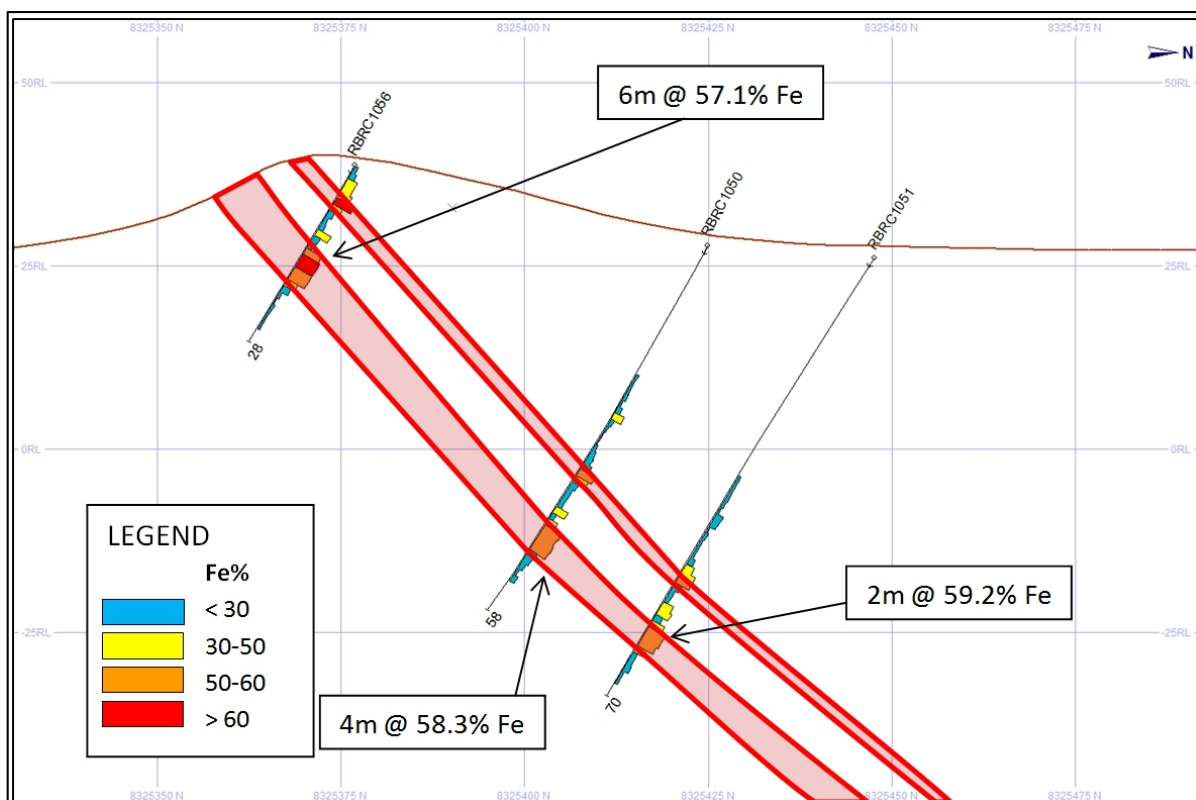
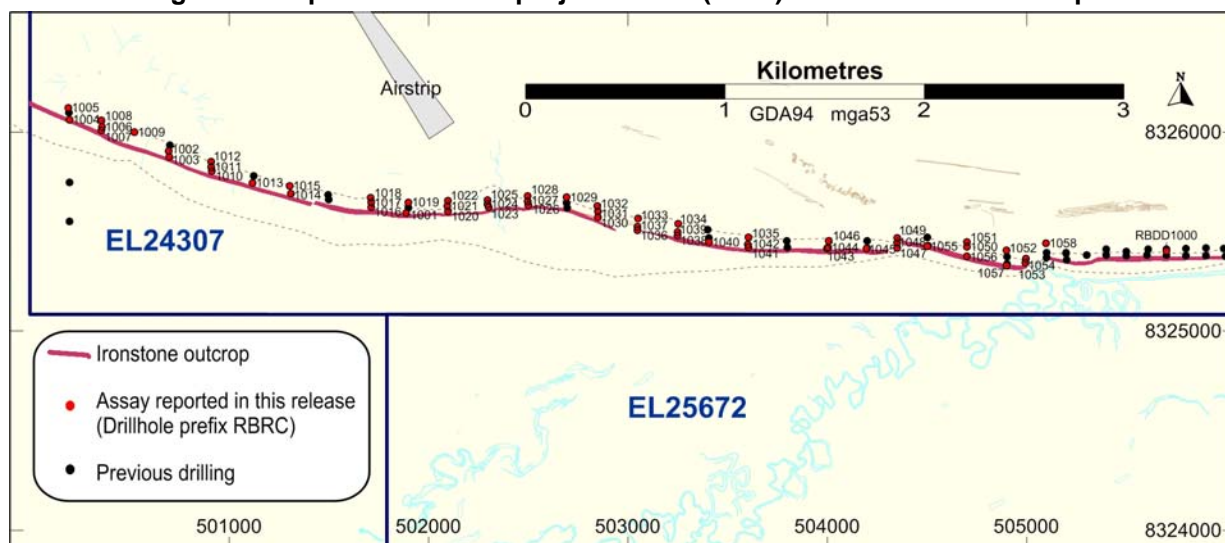
Area	Type	Holes	Metres	Anticipated publication of results
F-West	DDH	1	33	Drill results this ASX release. Maiden JORC compliant Inferred or Indicated Mineral resource estimate in Dec 2011
F-West	RC	58	3009	
F-East	DDH	6	295.3	First results released 11 <sup>th</sup> October; more to come. Upgraded JORC compliant Indicated Mineral resource estimate in Dec 2011
F-East	RC	69	4964	
E-East	RC	44	6135	Drill results and upgraded Indicated Mineral Resource estimate Dec 2011
E-South	RC	35	1671	Drill results and upgraded Indicated Mineral Resource estimate early 2012
D-North	RC	10	473	Drill results Dec; upgraded Inferred Mineral Resource estimate early 2012
B	RC	137	3293	Drill results Dec; Maiden Inferred Mineral Resource estimate early 2012
<b>TOTAL</b>		<b>360</b>	<b>19873.3</b>	

RC: Reverse circulation drilling.

DDH: Diamond drillhole

Mr Norm Gardner, the Managing Director said today “These results continue to grow our confidence relating to the DSO portion of the project. We will utilize these areas early on in production to maximize the opportunity presented by outcropping DSO grade ore. The requirement for significant amounts of fill for pads and roads could see this area effectively deliver free issue ore during the construction phase. It is also encouraging to see nearly 20,000 metres of drilling completed to date in the 2011 field season. Drilling has also recently commenced in unexplored territory at the adjacent Mountain Creek Iron ore Project area. The company looks forward to delivering a continuous stream of drilling results from now until the New Year”.

**Figure 2. Roper Bar iron ore project Area F (West) - drillhole location map**



**Figure 3. Roper Bar iron ore project Area F (West) - drill section on 504700E**

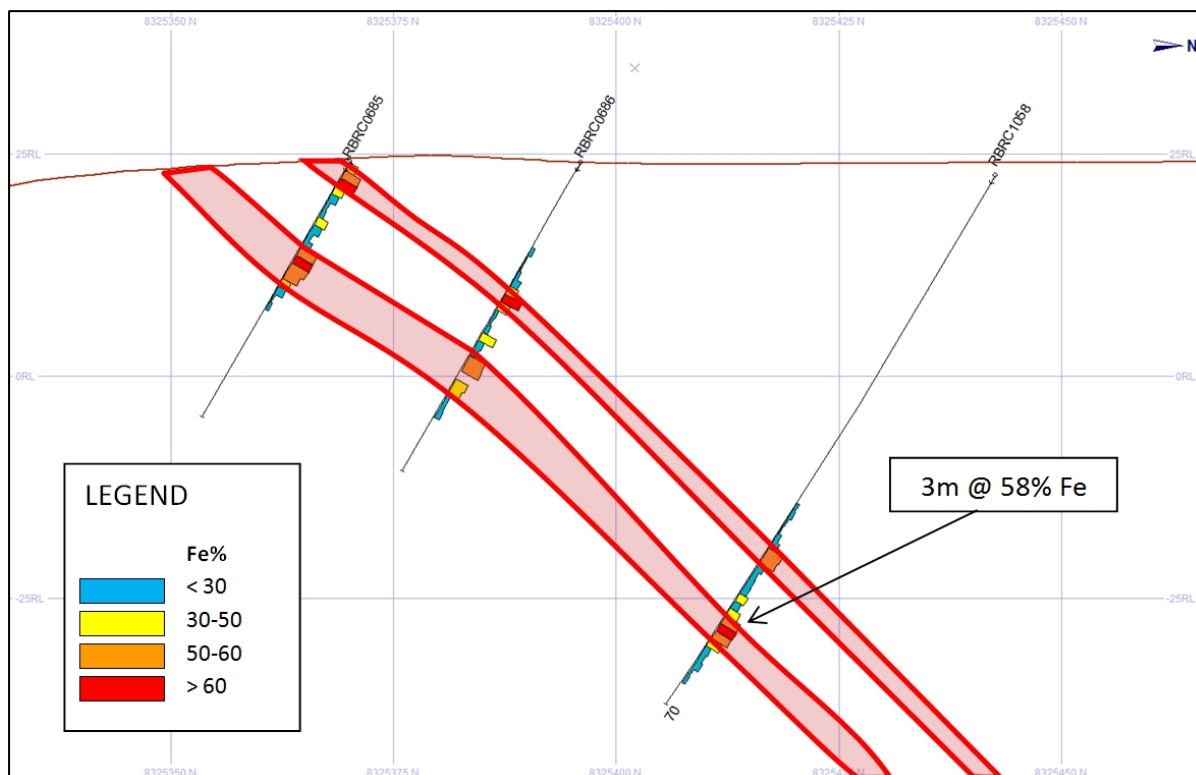


Figure 4. Roper Bar iron ore project Area F (West) - drill section on 505100E showing continuity of ore horizon at depth.

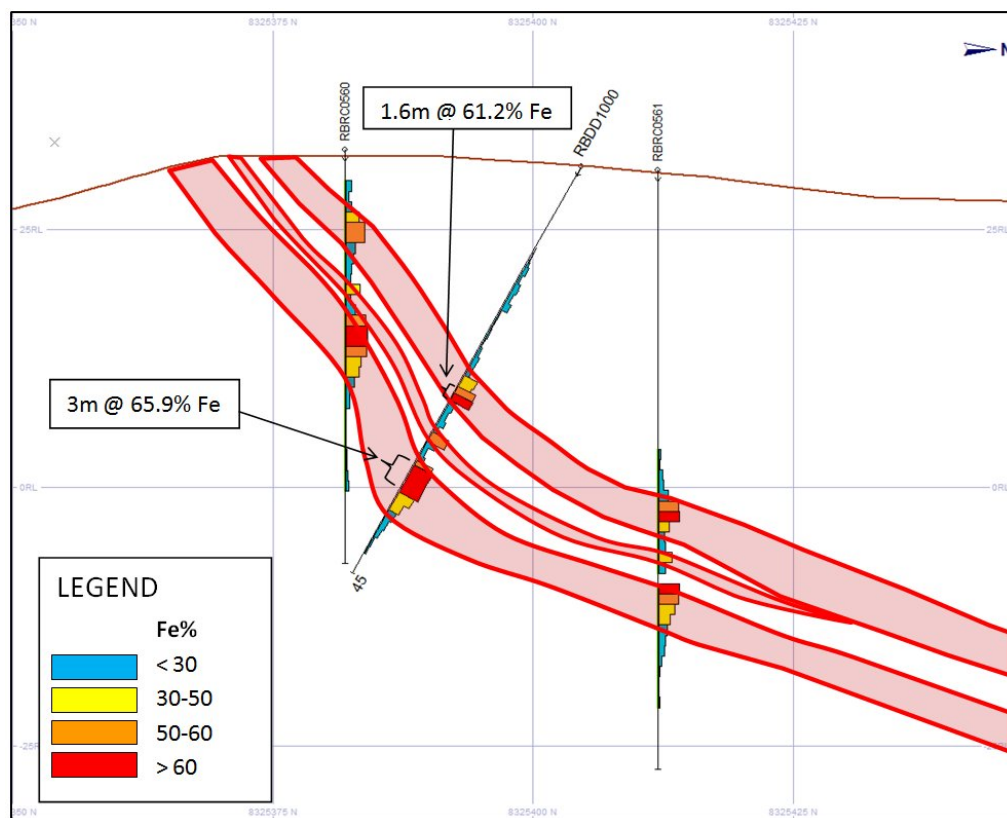


Figure 5. Roper Bar iron ore project Area F (West) - drill section on 505700E

**Table 3. Roper Bar iron ore project Area F (West) – Assay results from RC drilling.**

HOLE ID		From	To	Int	Fe	SiO2	Al2O3	P	LOI
RBDD1000		23.1	25.9	2.8	53.3	22.3	1.2	0.004	0.6
RBDD1000	incl.	24.3	25.9	1.6	61.2	11.5	0.7	0.004	0.4
RBDD1000	and	32.5	38	5.5	55.4	16.2	2.7	0.005	3.0
RBDD1000	incl.	33	36	3	65.9	3.4	1.4	0.004	2.0
RBRC1001		13	17	4	40.8	32.5	3.0	0.006	4.5
RBRC1002		39	43	4	40.2	32.0	3.7	0.005	5.1
RBRC1002	incl.	41	42	1	55.7	15.8	1.3	0.003	2.4
RBRC1003		9	16	7	39.7	32.0	3.4	0.005	5.4
RBRC1004		6	8	2	31.5	38.0	8.5	0.012	7.6
RBRC1005		46	49	3	40.0	21.6	1.8	0.003	14.9
RBRC1006		26	36	10	41.3	31.2	3.2	0.005	4.8
RBRC1007		17	30	13	41.7	29.5	3.4	0.005	5.1
RBRC1008		55	62	7	36.6	23.8	2.3	0.003	16.4
RBRC1009		57	61	4	33.0	27.1	3.1	0.003	17.5
RBRC1010		36	43	7	48.2	18.5	4.3	0.011	5.4
RBRC1010	incl.	38	40	2	56.6	6.0	3.2	0.012	6.8
RBRC1011		41	47	6	45.8	22.2	4.5	0.012	5.2
RBRC1011	incl.	42	43	1	58.4	8.1	2.8	0.018	4.3
RBRC1012		63	67	4	48.5	21.3	4.0	0.009	3.2
RBRC1012	incl.	64	65	1	62.5	5.3	1.9	0.006	2.3
RBRC1013		26	32	6	46.2	26.0	3.8	0.007	2.9
RBRC1013	incl.	27	28	1	56.1	15.4	1.7	0.004	1.6
RBRC1014		31	33	2	42.9	33.2	3.0	0.011	1.9
RBRC1014	and	38	46	8	35.6	21.2	2.0	0.004	20.8
RBRC1015		57	62	5	34.7	17.7	1.5	0.003	24.3
RBRC1016		25	31	6	39.3	32.1	3.8	0.005	5.5
RBRC1017		47	52	5	33.5	33.1	3.0	0.004	12.9
RBRC1018		68	72	4	34.3	21.2	2.3	0.005	22.3
RBRC1019		60	64	4	38.1	20.6	2.1	0.003	17.8
RBRC1020	nsi								
RBRC1021	nsi								
RBRC1022		76	79	3	50.1	18.2	2.9	0.011	4.8
RBRC1023	nsi								
RBRC1024		18	22	4	34.2	36.0	7.7	0.014	5.8
RBRC1025		39	40	1	51.5	15.2	2.7	0.018	6.0
RBRC1026	nsi								
RBRC1027	nsi								
RBRC1028	nsi								
RBRC1029		70	82	12	53.7	14.0	3.6	0.009	3.5
RBRC1029	incl	71	76	5	65.6	3.5	1.2	0.010	1.0
RBRC1030		24	29	5	59.4	9.2	3.5	0.007	1.9
RBRC1030	and	45	48	3	42.0	28.0	5.8	0.009	4.3
RBRC1031		54	57	3	47.1	22.9	4.8	0.009	3.0
RBRC1031	and	62	66	4	43.7	28.3	4.4	0.005	2.8
RBRC1032	and	66	68	2	56.4	15.3	2.0	0.008	1.4
RBRC1032	incl.	67	68	1	63.6	6.0	1.7	0.008	0.9
RBRC1032		75	79	4	52.1	18.6	3.7	0.004	1.9
RBRC1032	incl.	77	78	1	60.4	6.9	3.7	0.004	1.8
RBRC1033	and	43	45	2	64.2	5.7	1.5	0.007	0.7
RBRC1033		53	56	3	56.6	13.3	3.0	0.005	1.8
RBRC1033	incl.	53	55	2	61.6	6.9	2.5	0.004	1.6
RBRC1034		52	55	3	44.4	32.2	1.4	0.008	2.0
RBRC1034	incl.	53	54	1	57.3	15.3	1.0	0.009	1.3
RBRC1034	and	62	66	4	43.9	26.7	4.4	0.006	4.0
RBRC1035		50	53	3	35.9	37.5	1.4	0.004	6.9



**Table 3 (cont'd). Roper Bar iron ore project Area F (West) – Assay results from RC drilling.**

HOLE ID		From	To	Int	Fe	SiO2	Al2O3	P	LOI
RBRC1035	and	60	64	4	40.2	14.2	1.7	0.004	21.5
RBRC1036		8	10	2	46.9	23.4	5.5	0.010	3.8
RBRC1036	and	18	22	4	53.6	17.4	3.9	0.004	1.8
RBRC1036	incl.	19	21	2	58.9	10.6	3.3	0.004	1.6
RBRC1037		22	25	3	53.3	19.1	2.9	0.007	1.5
RBRC1037	incl.	23	24	1	53.3	19.1	2.9	0.007	1.5
RBRC1037	and	32	36	4	53.6	18.0	3.5	0.004	1.6
RBRC1037	incl.	33	35	2	61.6	7.6	2.8	0.003	1.3
RBRC1038		0	2	2	44.6	29.0	3.5	0.013	3.4
RBRC1038	and	18	29	11	49.4	24.5	2.9	0.005	1.5
RBRC1038	incl.	19	23	4	59.1	11.6	2.4	0.004	1.2
RBRC1039		33	35	2	48.3	28.6	1.0	0.004	1.2
RBRC1039	and	47	49	2	47.9	24.0	2.1	0.007	3.7
RBRC1039	and	57	61	4	50.8	20.8	2.7	0.004	2.5
RBRC1039	incl.	59	60	1	58.2	14.0	1.2	0.004	1.2
RBRC1040		11	16	5	47.6	26.5	3.2	0.007	2.0
RBRC1040	incl.	12	13	1	60.0	11.0	2.1	0.005	1.0
RBRC1040	and	21	25	4	49.3	24.3	2.9	0.006	2.1
RBRC1041		6	8	2	44.3	33.6	1.7	0.008	1.2
RBRC1041	and	16	19	3	51.7	20.6	3.2	0.006	1.8
RBRC1041	incl.	17	18	1	58.7	11.4	2.9	0.006	1.5
RBRC1042		36	40	4	51.2	25.4	0.8	0.003	0.4
RBRC1042	incl.	38	40	2	51.2	25.4	0.8	0.003	0.4
RBRC1043		10	13	3	38.9	42.2	1.1	0.008	0.9
RBRC1043	and	21	26	5	44.8	26.3	3.0	0.006	5.6
RBRC1043	incl.	22	23	1	56.1	10.7	2.5	0.006	5.5
RBRC1044	nsi								
RBRC1045	nsi								
RBRC1046	nsi								
RBRC1047	nsi								
RBRC1048	nsi								
RBRC1049		9	14	5	50.4	21.3	3.6	0.018	2.5
RBRC1049	incl.	11	12	1	57.1	13.7	1.9	0.017	2.3
RBRC1050		35	37	2	48.2	29.5	0.9	0.003	0.5
RBRC1050	and	43	48	5	53.4	19.8	2.2	0.003	1.0
RBRC1050	incl.	44	48	4	58.3	14.0	1.4	0.003	0.8
RBRC1051		49	52	3	42.0	35.9	0.9	0.005	2.5
RBRC1051	and	55	63	8	44.1	30.2	2.8	0.004	2.6
RBRC1051	incl.	59	61	2	59.2	11.7	1.3	0.003	1.7
RBRC1052		49	54	5	35.1	23.4	1.7	0.003	19.6
RBRC1053		11	17	6	42.5	28.9	3.4	0.008	5.6
RBRC1054	nsi	NSI							
RBRC1055		0	3	3	42.1	35.6	1.6	0.007	2.0
RBRC1055	and	7	11	4	51.2	22.0	2.9	0.005	1.6
RBRC1055	Incl.	8	10	2	60.0	10.4	2.2	0.005	1.4
RBRC1056		2	7	5	41.4	38.0	1.5	0.004	1.1
RBRC1056	Incl.	5	6	1	65.9	4.4	0.7	0.005	0.7
RBRC1056	and	13	19	6	57.1	14.1	2.6	0.004	1.4
RBRC1057		2	4	2	53.9	14.1	1.0	0.009	6.6
RBRC1057	and	8	10	2	41.8	29.7	2.1	0.006	6.6
RBRC1058		49	51	2	52.6	21.8	1.0	0.004	1.3
RBRC1058	and	55	62	7	44.3	28.0	3.0	0.004	3.8
RBRC1058	Incl.	58	61	3	58.0	12.5	1.0	0.004	2.5

RC drill samples collected at one metre intervals.

XRF results by ALS Chemex. Drillhole locations from hand-held GPS units.

## Background

The Roper Bar Iron Ore Province covers about 1,900 km<sup>2</sup> within eight granted exploration licences in the Northern Territory and includes an estimated 100 km<sup>2</sup> of outcrop of the target Sherwin Formation which hosts extensive hematite iron ore horizons. The Province is divided into two project areas – Roper Bar and Mountain Creek.

### JORC compliant Mineral Resource estimates from WDR's Roper Bar Project to date.

DEPOSIT AREA	Classification	Mt	Fe %	SiO <sub>2</sub> %	Al <sub>2</sub> O <sub>3</sub> %	P %	LOI %	Published
Area D	Inferred	90.7	37.2	31.5	3.2	0.01	9.6	Oct-09
Area D (north)	Inferred	116.5	40.3	26.3	2.2	0.01	11.0	Feb-11
Area E (south)	Inferred	72.1	39.0	30.6	2.9	0.01	8.6	Nov-10
Area E (east)**	Indicated	12.1	46.1	22.4	1.7	0.01	8.0	Dec-10
Area F (east)*	Inferred	14.1	49.5	21.9	3.1	0.01	2.6	Nov-09
Area F (east) *	Indicated	6.3	46.8	26.0	2.8	0.01	2.8	Nov-10
<b>TOTAL</b>		<b>311.8</b>	<b>39.9</b>	<b>28.4</b>	<b>2.7</b>	<b>0.01</b>	<b>9.4</b>	

\* Includes DSO of 9.8Mt @ 58.3% Fe, 10.7% SiO<sub>2</sub>, 2.6% Al<sub>2</sub>O<sub>3</sub>, 0.01% P and 2.1% LOI

\*\* Includes DSO of 4.7Mt @ 55.6% Fe, 14.1% SiO<sub>2</sub>, 1.1% Al<sub>2</sub>O<sub>3</sub>, 0.01% P and 4.2% LOI

### Competent Person's Statements

*The information in this report that relates to Mineral Resources is based on information compiled by Sharron Sylvester who is a full-time employee of AMC Consultants Pty Ltd and a Member of the Australian Institute of Geoscientists and has sufficient experience relevant to the styles of mineralisation and type of deposit under consideration to qualify as a Competent Person as defined in the 2004 edition of the Australasian Code for the Reporting of Exploration Results, Mineral Resources and Ore Reserves (JORC code). Sharron Sylvester consents to the inclusion of this information in the form and context in which they occur.*

*The information in this report that relates to Exploration Results is based on information compiled by Graham Bubner who is a Member of the Australian Institute of Geoscientists. Mr Bubner is a full-time employee of Western Desert Resources Ltd and has sufficient experience relevant to the styles of mineralisation under consideration and to the subject matter of the report to qualify as a Competent Person as defined in the 2004 edition of the Australasian Code for the Reporting of Exploration Results, Mineral Resources and Ore Reserves (JORC code). Mr Bubner consents to the inclusion in the report of the matters based on his information in the form and context in which they occur.*