

Western Desert Resources, a diversified resources business with a portfolio of quality mineral exploration assets in the Northern Territory.

Western Desert Resources' business is built on the exploration of its substantial portfolio of iron ore, gold, base metals and uranium projects in the world-class mining provinces of Australia and will continue to grow through the generation and acquisition of new opportunities and resources.

FAST FACTS

ASX Code	WDR
Issued Shares	207m
Market Cap	A\$83M

DIRECTORS

Rick Allert	Chairman
Norm Gardner	MD
Mick Ashton	Director
Graham Bubner	Director
David Cloke	Director
Phillip Lockyer	Director
Scott Perrin	Director

COMPANY HIGHLIGHTS

Iron Ore

- Roper Bar & Mountain Creek projects (NT)
- Hematitic iron ore
- Total Inferred and Indicated Mineral Resource estimates of 312Mt @ 40% Fe including DSO of 14.5Mt @ 57.4% Fe
- Low Impurities
- Mine development underway
- Proximity to coast and markets

Gold / Copper

- East Rover Project near Tennant Creek (NT)

CONTACT DETAILS

Level 1, 26 Greenhill Rd
WAYVILLE, SA, 5034
T: +61 8 8177 8800
info@westerndesertresources.com.au

ABN: 48 122 301 848

WDR ANNOUNCES ROPER BAR IRON ORE PROJECT LEADERSHIP TEAM

Key Points:

- **WDR progresses Roper Bar iron ore project with appointment of strengthened leadership team:**
 - **Roper Bar Project Manager**
 - **Northern Territory General Manager of Operations**
 - **Mining Engineering Manager.**

Western Desert Resources Limited (**ASX: WDR**) has continued to progress the Roper Bar iron ore project with the appointment of an experienced project leadership team.

These appointments follow WDR's announcement last week of an agreement with Xstrata Zinc to determine the feasibility of accessing the McArthur River Mine loading facility at Bing Bong.

WDR has made three senior appointments to lead the Roper Bar iron ore project.

Mr. Claude Severino – Roper Bar Project Manager

Mr Severino is a civil engineer with twenty-five years experience in major civil construction projects including roads, dams and bridges. Claude will be the construction manager for the Roper Bar iron ore project with responsibility for Engineering Management and procurement.

Mr. Patrick Collins – Northern Territory General Manager

Based in Darwin, Mr Collins has a strategic understanding of the requirements of the Roper Bar iron ore project and the Roper Bar locality having worked as Manager, Community Relations, McArthur River Mine and then as General Manager, Corporate Affairs and Community Relations for Xstrata Zinc Australia. Since leaving Xstrata Zinc in 2009, Mr Collins has worked with several Northern Territory companies through his resource consulting business actively pursuing exploration and expansionary opportunities for their resource related opportunities.

Mr. Graham Younge – Mining Engineering Manager

Mr Younge is a mining engineer with over 22 years experience of underground and open cut mining. He was recently involved in the delivery of the Integra Randells Gold project on time and on budget. Mr Younge will be responsible for the development and implementation of safe and efficient processes to ensure the project achieves the necessary production levels.

Mr Norm Gardner, Managing Director of WDR said, "I am very happy to welcome three like minded and pro-development operators that will make a huge contribution to WDR and getting Roper Bar into production."

For further information, contact:

Norm Gardner
Managing Director
(08) 8177 8800

info@westerndesertresources.com.au

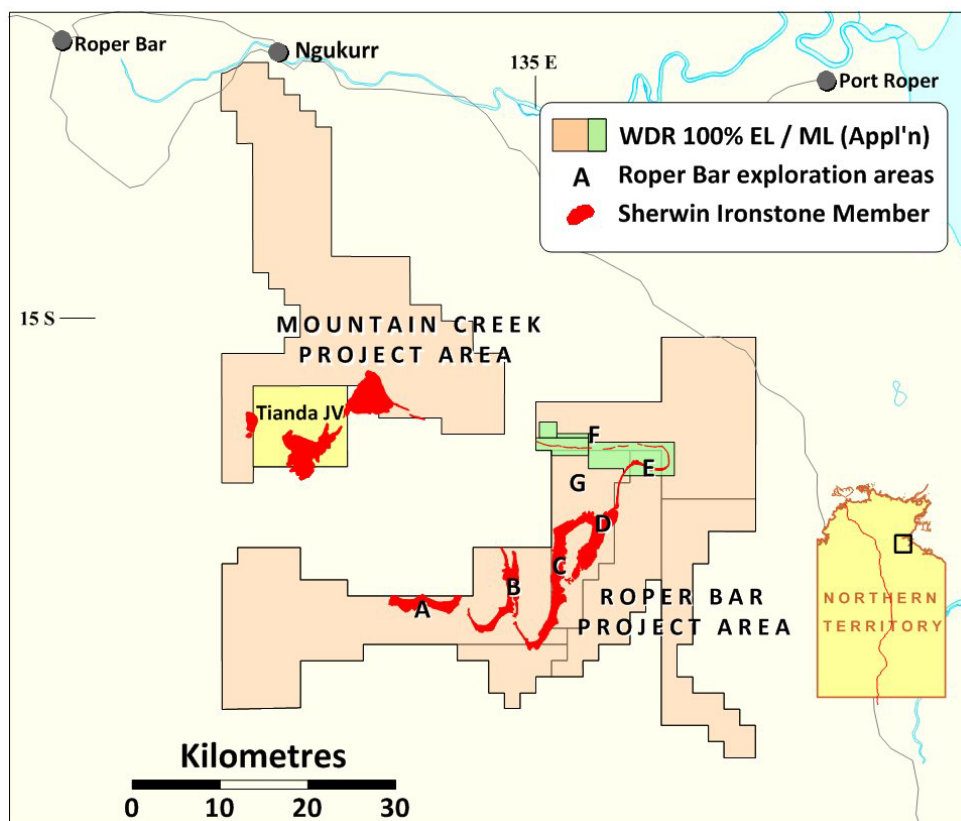
Alasdair Jeffrey

Executive Director, Rowland

0404 926 768

alasdair.jeffrey@rowland.com.au

Background of Roper Bar project



The Roper Bar Iron Ore Province covers about 1,900 km² within eight granted exploration licences in the Northern Territory and includes an estimated 100 km² of outcrop of the target Sherwin Formation which hosts extensive hematite iron ore horizons. The Province is divided into two project areas – Roper Bar and Mountain Creek.