



Annual General Meeting

Confirmation of Votes on Resolutions



Date: 29 November 2011

ASX Code: CRK

www.carrickgold.com

Share Capital: 139.7M ordinary shares

Share Price: \$0.365

Market Capitalisation: \$51.0M

Cash: \$15M

Directors

Laurence Freedman AM, Chairman
John McKinstry, Managing Director
Ross Gillon
Robert Schuitema, Company Secretary

Principal and Registered Office

12 St. Georges Terrace
Perth WA 6000
+61 8 9225 5544

Mailing Address

GPO Box 2567
Perth WA 6001

Media & Investor Relations

David Greer
Radar Group
+61 2 8256 3307
davidg@radargroup.com.au

In accordance with Listing Rule 3.13.2 and section 251AA of the Corporations Act, we advise details of the resolutions and the proxies received in respect of each resolution are set out in the attached proxy summary.

Resolution 1.

Adoption of the Remuneration Report

The Resolution was passed on a poll.

For	19,316,220
Against	13,163,343
Abstain	26,700,000
Key Management Personnel (unable to vote on this resolution)	38,296,857

Resolution 2.

Re-election of Mr Ross Gillon

The Resolution was passed on a poll.

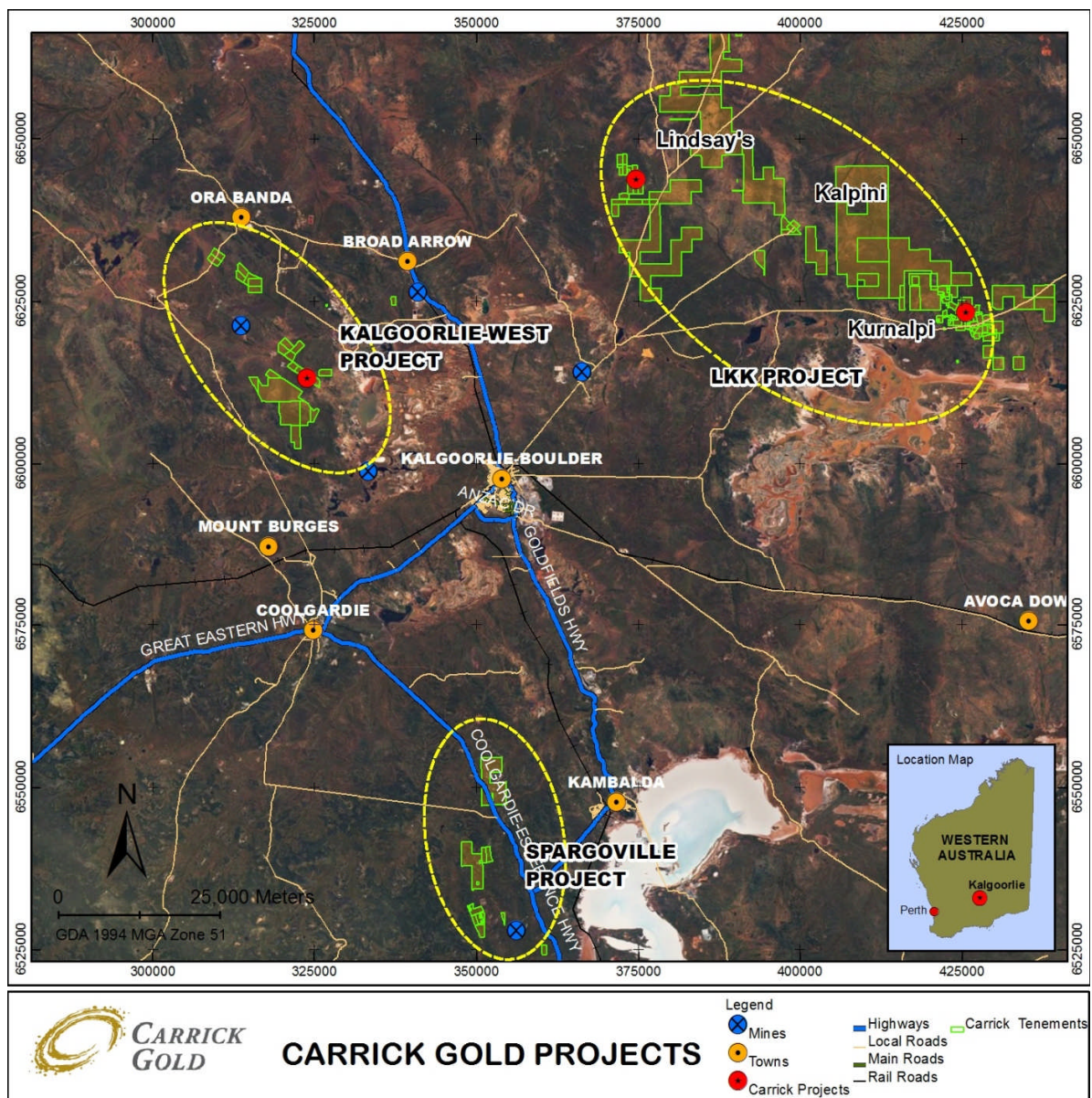
For	42,356,123
Against	27,976,725
Abstain	27,315,000

Resolution 3.

Re-election of Mr John McKinstry

The Resolution was passed on a poll.

For	68,418,557
Against	29,229,291
Abstain	0



About Carrick Gold Limited

Carrick Gold Limited (ASX:CRK) is a gold exploration and development company based in Perth, Western Australia.

The Company's suite of tenements covers an area of over 830km² and is located within 50 - 90km of the world-renowned gold-mining town of Kalgoorlie, Western Australia, where CRK maintains a field office.

Three gold deposits have been discovered - Lindsay's, Kalpini and Kurnalpi (now collectively the LKK Project) – with a number of other prospects in the exploration pipeline.

With approximately \$15 million in cash and no debt, Carrick Gold is well-funded to pursue the exploration and development of its projects.

The Company is focused on developing the three projects toward production, leveraging off existing nearby infrastructure.