



GLANDORE PROJECT PHASE 2 DRILLING ASSAYS COMPLETED

HIGHLIGHTS

- **Phase 2 drilling program at Glandore Project completed**
 - **56 out of 74 holes assayed return gold mineralisation**
 - **Gravity Survey initiated on Majestic Structure extension**
 - **3D modelling delineates future exploration**
 - **Strategic focus on proving mineralisation to develop Glandore as regional gold production hub**
-

Aruma Resources Limited (ASX:AAJ) ("Aruma" or "the Company") is pleased to report final assay results from its Phase 2 drilling program at its flagship Glandore Project Western Australia's eastern Kalgoorlie Goldfields region.

Managing Director, Peter Schwann, confirmed assay results have been received for the final holes in the 74 hole program designed to test gold anomalies in previously unexplored or underexplored areas.

Of the final 26 holes in the 74-hole program, 23 returned anomalous results, and identified a confined zone of half gram gold mineralisation over a two kilometre length. The effectiveness of the drilling is shown in Table 1 with a total of 56 from 74 holes returning anomalies.

"While the Glandore remains at the early stages of exploration evaluation, the area is shaping up as a gold mineralised system of significant scale," Mr Schwann said.

"Native Title Agreements and mining licences are already in place, and we are confident the (Glandore) Project has significant potential to be developed as gold hub, with Aruma's multiple surrounding projects - all within a 60km radius, as regional satellites."

"We have a clear plan of work programs mapped out for the Glandore Hub Project, as well as the surrounding Kurnalpi South, Laverton East and Jundee South Projects in coming months."

**GLANDORE PROJECT
PHASE 2 DRILLING ASSAYS COMPLETED**

Hole	Easting*	Northing*	Azimuth	Dip	From	To	Intercept	Au g/t #
AGR13	391404	6594996	270	-60	37	38	1	1.04
AGR14	391483	6594998	270	-60	22	23	1	1.08
AGR23	391647	6594358	270	-60	77	78	1	1.07
AGR28	391664	6594194	270	-60	0	11	11	2.32
AGR28	391664	6594194	270	-60	13	15	2	1.01
AGR28	391664	6594194	270	-60	20	21	1	1.27
AGR28	391664	6594194	270	-60	33	36	3	1.56
AGR28	391664	6594194	270	-60	38	39	1	1.23
AGR50	391639	6594200	60	90	15	16	1	1.07
AGR60	391759	6593901	60	90	11	15	4	1.41
AGR61	391742	6593775	60	90	31	36	5	1.42
AGR69	391724	6594898	60	90	18	20	2	4.77

Table 1 Significant Assay Results from Aruma's RC Program at Glandore.



GLANDORE PROJECT
PHASE 2 DRILLING ASSAYS COMPLETED

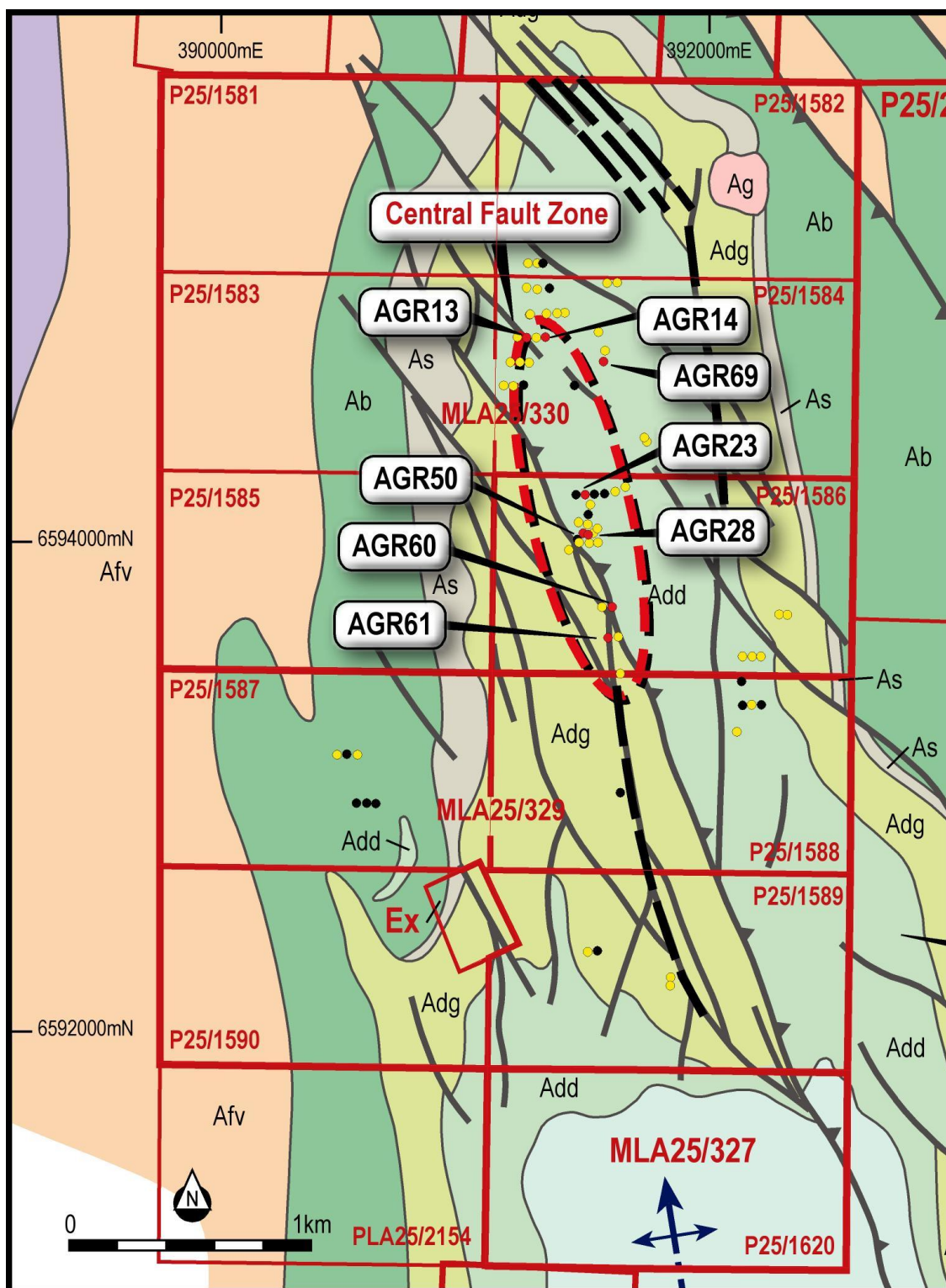


Figure 1 Recent Glandore RC drilling showing the central fault mineralisation in red ellipse.



**GLANDORE PROJECT
PHASE 2 DRILLING ASSAYS COMPLETED**

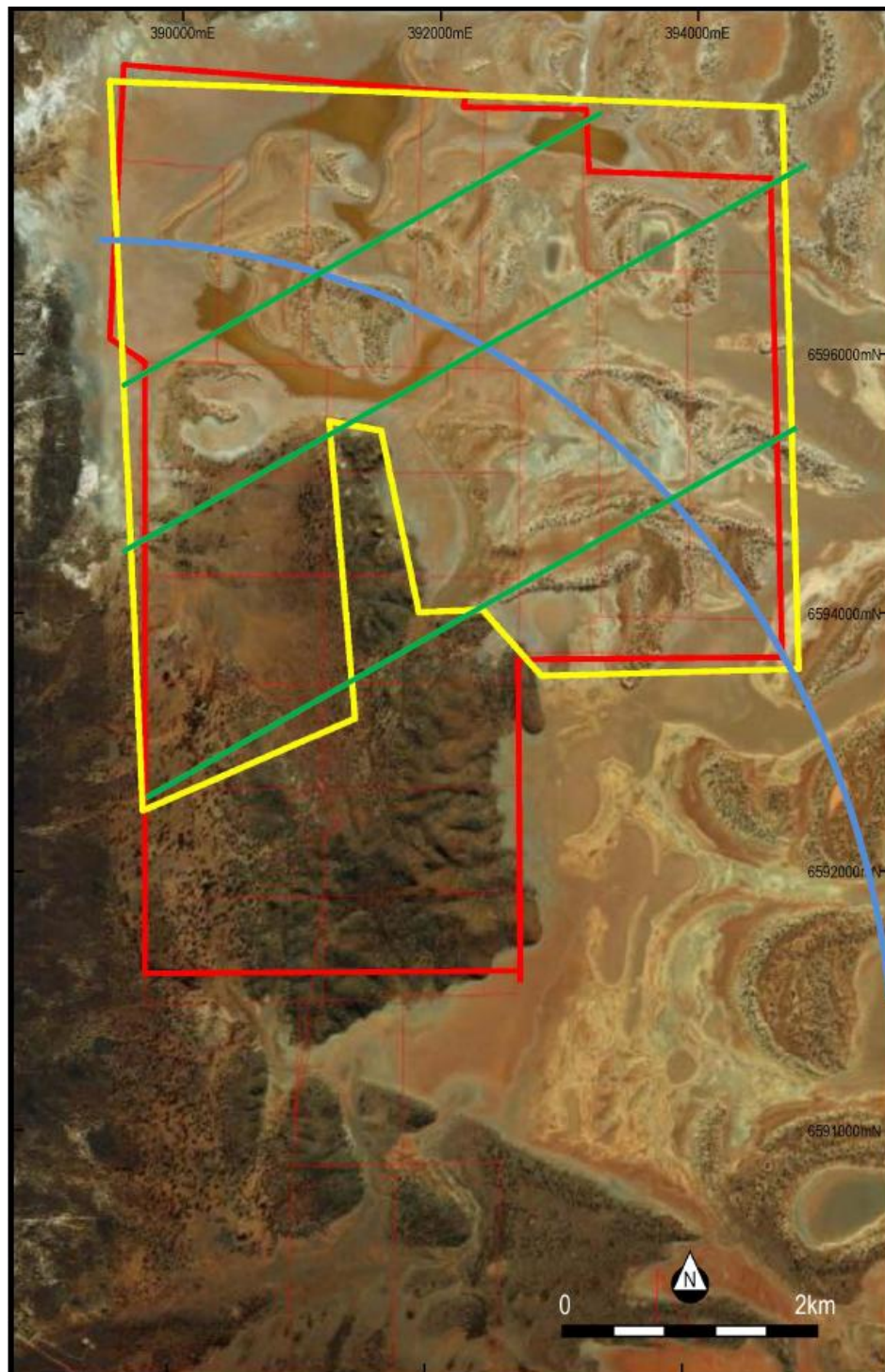


Figure 2 Glandore Lease outline showing Gravity Survey area in Yellow.

The image above shows the area of the Gravity Survey, with the Structure (in Blue) and the major lineament (in Green). This structure is the location for the Axial Planar and Supergene Zone mineralisation.

Aruma Resources Limited

ABN 77 141 335 364 ASX: AAJ

24 Colin Street, West Perth WA 6005, Australia | PO Box 2803, West Perth WA 6872, Australia

T +61 8 9481 2425 | F +61 8 9481 1756 | W www.arumaresources.com



**GLANDORE PROJECT
PHASE 2 DRILLING ASSAYS COMPLETED**

Exploration Activities for the coming year

GLANDORE

- Negotiations and involvement of Traditional owners
- Follow up drilling in the now extended Supergene-Axial lease area
- Follow up drilling in the Central Fault Zone
- Gravity Survey over covered areas
- Initial drilling on the extension of the Majestic Structure

KURNALPI SOUTH

- PoWs for drilling Au anomalies at Steeple Hill, Pinnacles South and Mt Quin
- Investigating Ni possibilities at Steeple Hill
- Initial data base delineation over new leases

LAVERTON EAST and JUNDIE SOUTH

- PoWs for RAB over anomalies in geochemistry and Hyvista
- Looking at new areas

End.

For further information please contact:

Peter Schwann
Managing Director
Aruma Resources Limited
Ph: +61 (0)8 9481 2425
Mobile: +61 (0) 417 946 370
info@arumaresources.com

Annette Ellis/Karen Oswald
Purple Communications
Ph: +61 (0)8 6314 6300

The information in this release that relates to Exploration Results, Mineral Resources or Ore Reserves is based on information compiled by Peter Schwann who is a Fellow of the Australasian Institute of Mining and Metallurgy and Chartered Professional (Geology). Mr Schwann is an employee of the Company.

Mr Schwann has sufficient relevant experience to qualify as a Competent Person as defined in the JORC Code (2004) and consents to the inclusion of this information in the form and context in which it appears.

Aruma Resources Limited

ABN 77 141 335 364 ASX: AAJ

24 Colin Street, West Perth WA 6005, Australia | PO Box 2803, West Perth WA 6872, Australia

T +61 8 9481 2425 | F +61 8 9481 1756 | W www.arumaresources.com