



**ASX Code**

**NUP**

**Capital Details**

Shares on issue 271,458,483  
Share Price \$0.049  
Market cap \$13.3 mil

**Directors**

**Executive Chairman**

Mick Muir

**Non Executive Directors**

Ian Kowalick  
Robert Owen  
John Jackson

**Company Secretary**

Anthony Schildkraut

**Projects**

**Westmoreland:** Eva/Cobar II and  
Lagoon Creek- Uranium/Gold

**Lucy Creek/Arganara-**Phosphate  
and Rare earth Elements

**Aileron** – Uranium/ REE's Focus

*NuPower Resources Limited is a  
Northern Territory focused  
exploration company. Our vision  
is to become a successful  
exploration and mining company  
with superior cashflows.*

**ASX ANNOUNCEMENT / MEDIA RELEASE**

**28 January 2011**

**Exploration Update**

- **HIGH GRADE PHOSPHATE RESULTS FROM ARGANARA PROJECT**
- **ARAFURA RESOURCES LTD AGREES TO PROVIDE TECHNICAL CONSULTANCY TO NUPOWER'S STRANGWAYS RARE EARTH PROSPECT.**

**Arganara (Phosphate) EL 24726**

The Company is pleased to report that the latest results from surface rock chip sampling at NuPower's 100% owned project returned assays of up to 37.6% P<sub>2</sub>O<sub>5</sub>.

These results are from areas of phosphate mineralisation discovered by previous explorers VAM Ltd, in the Limestone Bore area, located in the southern portion of the tenement, and historically reported by RTZ at the Anomaly L prospect in the northern end.

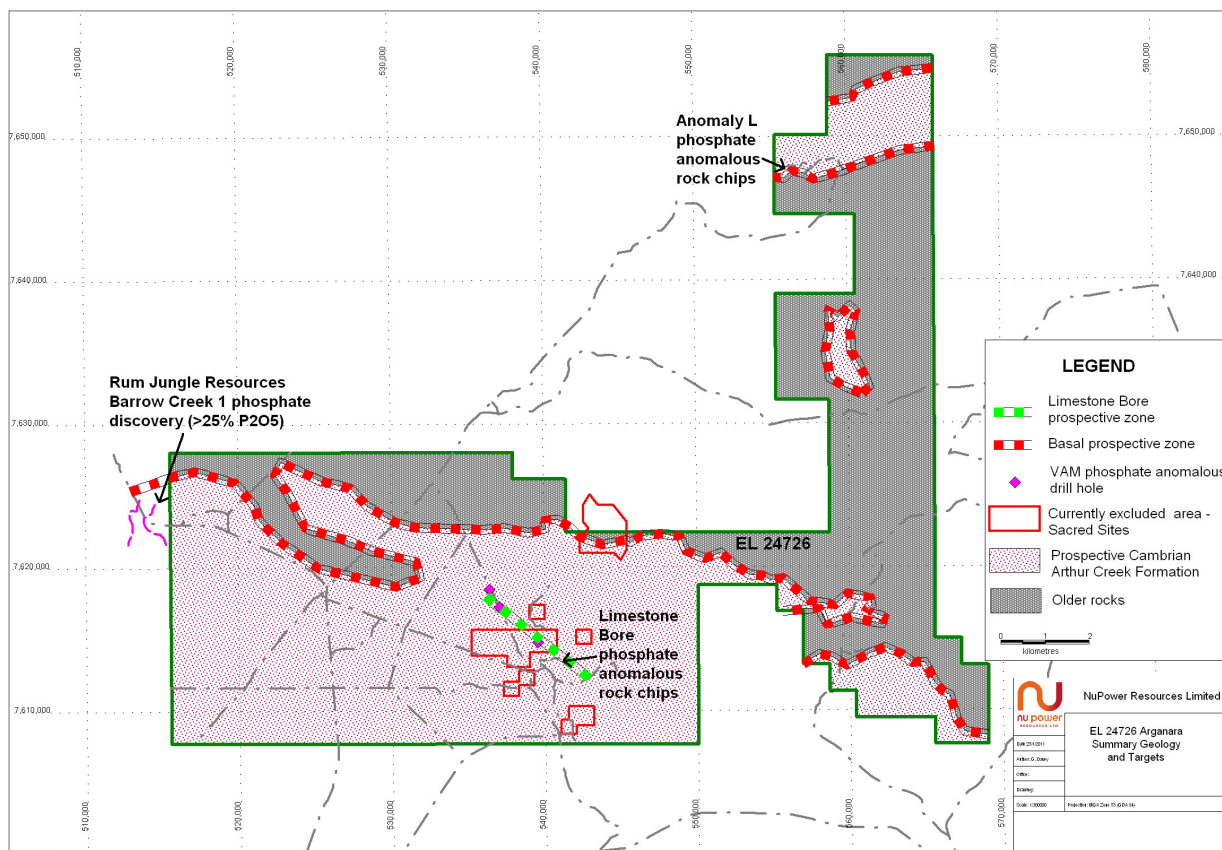
In particular, drilling near Limestone Bore by VAM Ltd in the 1970s intersected significant phosphate mineralisation in three holes:

- L2 2.7m @ 21.8% P<sub>2</sub>O<sub>5</sub> from 25.9m
- L4 20.1m @ 9.1% P<sub>2</sub>O<sub>5</sub> from 38.1m incl. 9.1m @ 14.7% P<sub>2</sub>O<sub>5</sub>.
- L5 7.3m @ 6% P<sub>2</sub>O<sub>5</sub> from 28m,

and surface rock chip sampling by RTZ in the region of Anomaly L included eight samples that contained 20-40.7% P<sub>2</sub>O<sub>5</sub>.

During recent exploration work in the Limestone Bore area the Company took nineteen samples which assayed between 1.21% and 17%  $P_2O_5$ , of which six samples assayed 10%  $P_2O_5$  or better. Combined with the indications from the early VAM drilling and accounting for areas excluded by Sacred Sites, phosphate may be present over a strike length of up to 6km while the phosphatic horizon is open along strike to the northwest and to the southeast. Rocks here are strongly weathered and it is felt that the phosphate content of less weathered material maybe considerably higher.

The phosphatic horizon is within the Cambrian Arthur Creek Formation of the Georgina Basin and at a higher stratigraphic level than Barrow 1, the high grade phosphate discovery recently announced by Rum Jungle Resources Ltd, that abuts the western boundary of NuPower's Arganara tenement. A minor radiometric anomaly at the stratigraphic position of Barrow 1, near the base of the Arthur Creek Formation, immediately to the east of Barrow 1 in the Arganara tenement is due to ferruginous siltstone. It contains no phosphate according to field XRF assays, no samples were taken, outcrop is sparse and there has been no other work by NuPower in this region to date.



At Anomaly L, located to the north of Limestone Bore previously identified by RTZ, two rock chip samples taken by NuPower, assayed 31.8% and 37.6% P<sub>2</sub>O<sub>5</sub>. Further phosphate rock was found a kilometre to the west of here where three NuPower samples assayed 15.2%, 24.2% and 27% P<sub>2</sub>O<sub>5</sub>. In this region phosphate mineralisation appears to be up to 5m thick.

It is important to note that the Anomaly L mineralisation lies at the base of the Cambrian Arthur Creek Formation. NuPower has therefore identified at least two stratigraphic zones prospective for phosphate within NuPower's tenement.

Further mapping and sampling is required at both the Anomaly L and Limestone Bore areas to determine the extent and significance of phosphate mineralisation. Reconnaissance mapping is also required along the extensive strike length of the basal part of the Arthur Creek Formation within the tenement area. It is expected that this will lead to a significant drilling program by NuPower.

These results from Arganara compliment previously announced results (4<sup>th</sup> March 2010) from the drilling program of the Company's phosphate project at Lucy Creek which returned assays as follows:

Hole No. LCRC063: 10 m @ 22.05 % P<sub>2</sub>O<sub>5</sub> from 15m

Hole No. LCRC074: 40 m @ 18.09% P<sub>2</sub>O<sub>5</sub> from 15m (including 10m @ 31.95 % P<sub>2</sub>O<sub>5</sub> from 20m).

### **Strangways (Rare Earths) SELs 25055, 25056**

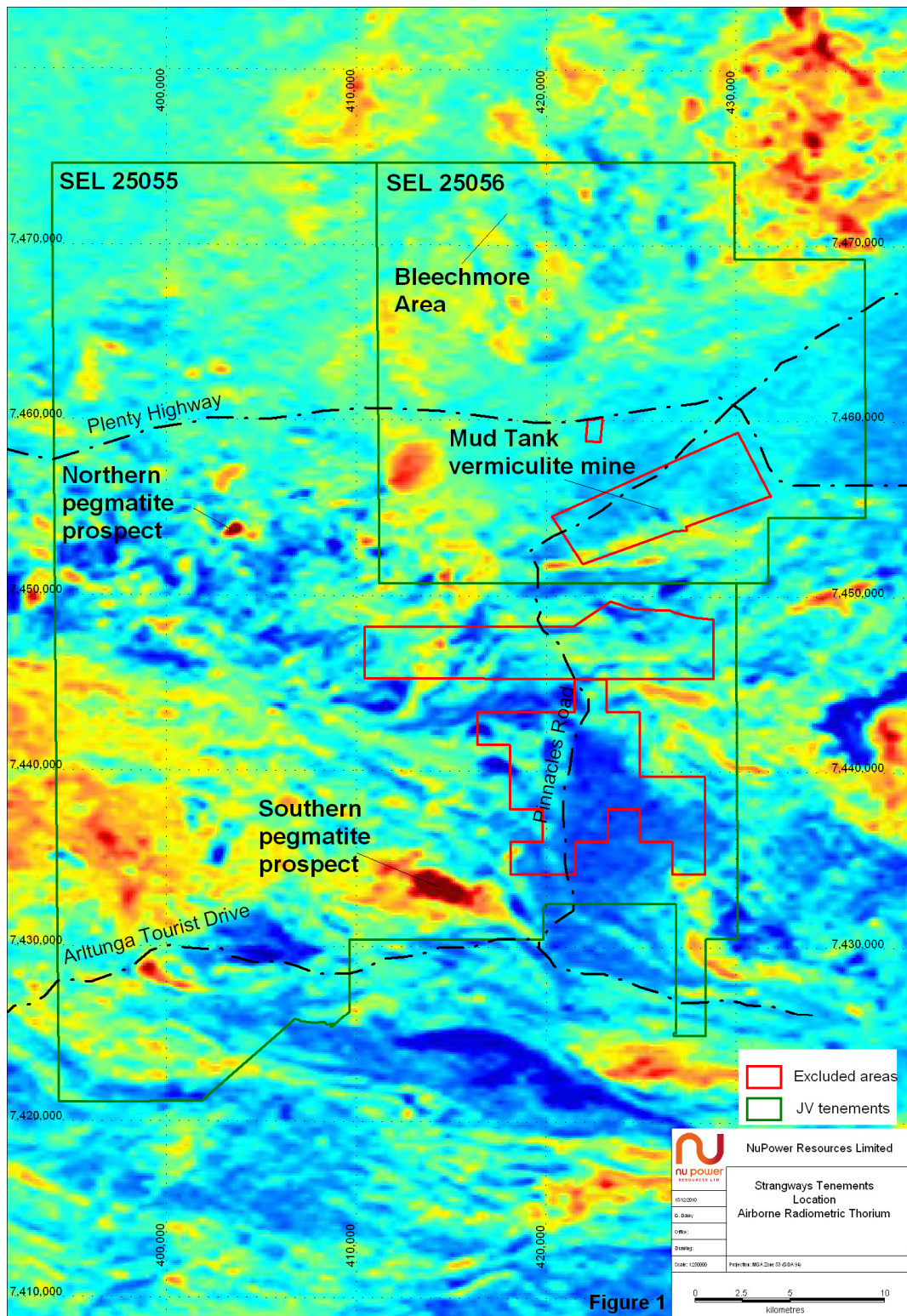
Following NuPower's discovery of extensive rare earth element (REE) bearing pegmatites on the Strangways joint venture tenements the Company has arranged with Arafura Resources Ltd to assist with the exploration program by providing technical support (on a commercial basis) with geological and metallurgical studies.

NuPower Executive Chairman, Mr Mick Muir, stated that Arafura's experience and expertise in rare earth exploration and treatment processing would greatly assist the Company in progressing this promising project.

This follows the successful renegotiation of the terms of the joint venture with Maximus Resources Ltd, (who are enthusiastic about NuPower's early exploration results), from "energy minerals only" (uranium, thorium coal) to include all metals, while Flinders Mines Limited continues to retain the diamond rights.

The REE-bearing pegmatites were found during a recent exploration work to follow up airborne radiometric anomalies and anomalous stream sediment geochemistry from an earlier NuPower sampling program. Limited surface rock chip sampling and mapping of part of the coincident uranium-thorium anomaly beneath the Southern Pegmatite Prospect returned an average grade of 0.47% Total





**Figure 1**

Rare Earth Oxides (TREO) with the highest being 1.09% TREO. In addition to the rare earth element

Level 3, 80 Clarence St, Sydney, NSW 2000

**STREET ADDRESS**

PO Box R1753, Royal Exchange, NSW 1225

**MAIL ADDRESS**

+61 2 9262 4235

**TELEPHONE**

+ 61 2 9262 6301

**FACSIMILE**

info@nupowerresources.com.au

**EMAIL**

120 787 859

**ACN**

results, highly anomalous values for a number of elements including barium, rubidium, strontium and scandium are also present.

Further north within the JV area carbonatites are known from the Bleechmore Dykes area that are now of particular interest since the majority of global rare earth occurrences are associated with these rare and unusual types of intrusive rocks.

This area was most recently explored by Flinders Diamonds for vermiculite, an alteration product of mica, present in the carbonatite and surrounding basement rocks. Although anomalous REEs have been reported from here by previous explorers, including one highly anomalous value of 9,350ppm Ce from a bottom-of-hole vacuum sample reported by Flinders, there has been no previous systematic REE exploration in the region.

NuPower's exploration has been brief and follow up work will include a thorough evaluation of previous work, more detailed mapping and geochemical sampling and possible airborne geophysics. This work is expected to lead to scout drilling.



**I G (Mick) Muir**  
**Executive Chairman**

*The information in this release relates to exploration results and geological interpretation by Mr Warrick Rafferty (MSc). Mr Rafferty is a Member of the Australasian Institute of Mining and Metallurgy and a Fellow of the Society of Economic Geology and has sufficient experience to qualify as a Competent Person as defined in the Australasian Code for Reporting of Mineral Resources and Ore Reserves (JORC CODE) for reporting exploration results. Mr Rafferty consents to the inclusion of the data in the form and context in which it appears.*

*This release may contain forward-looking statements. The actual results could differ materially from a conclusion, forecast or projection in the forward-looking information. Certain material factors or assumptions were applied in drawing a conclusion or making a forecast or projection as reflected in the forward-looking information.*

For further information contact: NuPower Resources Limited  
Sydney, Australia +61(2) 9262 4235  
Or visit our website at [www.nupowerresources.com.au](http://www.nupowerresources.com.au)