



THE COMPANY'S SINTOUKOLA POTASH PROJECT RETURNS FURTHER ASSAY RESULTS CONFIRMING THE EXTENSIVE POTASH DEVELOPMENT ON THE KOLA TARGET IN THE REPUBLIC OF CONGO

HIGHLIGHTS:

- **Assay results received from drill-hole EK-05 underscore the high grade and shallow mineralization on the project**
- **Shallow sylvinite intersections include:**
 - **4.43m at 23.47% K₂O (37.17% KCl) from 274.65m, including 3.08m at 27.33% K₂O (43.28% KCl) from 276.00m**
 - **9.84m at 11.10% K₂O (17.58% KCl) from 282.48m, including 6.59m at 11.30% K₂O (17.90% KCl) from 287.30m**
- **Phase 1 sixteen hole exploration programme completed**

Elemental Minerals Limited, ASX:ELM, ("Elemental") is again pleased to announce more shallow high grade assay results from its potash drilling programme at the Kola Prospect which falls within the 1436.5 km² Sintoukola Licence area, located 56 kilometres north of Pointe Noire (Fig.1). These results support the initial geological interpretation and augment the already announced results for boreholes EK-01, EK-02, EK-04, and EK-06.

The 16 hole diamond drill programme which commenced in July 2010 is now complete which included 2 holes designed to twin historical drilling and 14 target delineation drill holes for 6,681m (Fig. 2).

The primary target for the drilling programme are several sylvinite horizons that occur at a depth of 240m to 300m below surface, near the top of a thick (>350m) evaporite sequence, overlying 3 to 4 carnallite horizons. Elemental's sylvinite Exploration Target, derived from historical drilling, is between 170Mt to 300Mt grading between 23.10% K₂O (36.67% KCl) and 23.50% K₂O (37.30% KCl)¹.

The sylvinite target horizon was intersected in EK-05 between 274.65m and 292.32m below surface. EK-05 is located 1.0km NW of EK-04 and 3.0km SE of EK-01 with a very similar mineralisation distribution.

¹ The potential quantity and grade of the Exploration Target is conceptual in nature and there has been insufficient exploration to define a Mineral Resource and it is uncertain if further exploration will result in the determination of a Mineral Resource.

The most significant mineralised sylvinite horizons in drill hole EK-05 include:

- 4.43m at 23.47% K₂O (37.17% KCl) from 274.65m, including 3.08m at 27.33% K₂O (43.28% KCl) from 276.00m
- 9.84m at 11.10% K₂O (17.58% KCl) from 282.48m, including 6.59m at 11.30% K₂O (17.90% KCl) from 283.35m

Drill hole EK-05 was positioned in the south central area of the Kola grid (Fig. 2) and further demonstrates the geological and grade continuity of the target. Assay results and geological logging, augmented by down hole geophysical data continue to support the reported historical grades and Elemental therefore remains confident that its initial Exploration Target of between 170Mt and 300Mt of sylvinite grading between 23.1% and 23.5% K₂O (36.67% KCl % and 37.30% KCl respectively) will be achieved.

Iain Macpherson, Elemental's MD, commented that these results continue to confirm the quality of the Kola target and that these latest sylvinite results taken with earlier results continues to demonstrate that Elemental's strategy of targeting the relatively high grade, shallow sylvinite mineralisation with a view to developing a substantial, potentially low cost sylvinite producer remains well on track. Early indications on further sylvinite drilling tend to support the company's model and this coupled with the possibility of potentially substantial carnallite upside enhances the company's drive to take advantage of positive potash market fundamentals.

Phase 1 Exploration Programme

The completion of this drill phase maintains Elemental's objective to advance the project through the definitive feasibility stage and to production in 2015.

Table 1: Drill hole coordinates

Hole	East-WGS84	West-WGS84	RL	Depth	Azimuth	Dip	Comment
EK_05	799,235.09	9,544,693.43	38.32	315m	0	-90	Reported

Table 2: Selected assay returns from EK-05

Hole	Zone	From (m)	To (m)	True Width (m)	% K ₂ O	% KCl
EK_05	Upper Zone	274.65	279.08	4.43	23.47	37.17
	including	276.00	279.08	3.08	27.33	43.28
EK_05	Lower Zone	282.48	292.32	9.84	11.10	17.58
	including	283.35	289.94	6.59	11.30	17.90

SAMPLING & ANALYTICAL DETAILS:

Drill core samples (PQ core diameter sizes) are split in half by a diamond saw cutting machine at the project site. The half split samples, each weighing about 3-7 kilograms, are collected at an average interval of 0.3 to 0.6 metres. The samples were processed and analysed by Genalysis, Perth, Australia. Sample preparation and analysis is done by Genalysis. Potassium, Sodium, Calcium, Magnesium, Chlorine, and Sulphur were analysed by ICP-ES. Routine international-standard QA/QC procedures were used by Genalysis. One of the six elements analysed are reported here: potassium (K) and its molecular equivalent of Potassium oxide (K_2O , by multiplication with a factor of 1.204). The detection limit for K is 0.001%.

Competent Person Statement:

Scientific or technical information in this release has been reviewed by Mr Jeff Elliott, of CSA Global Pty Ltd, the company's geological consultants. Mr Jeff Elliott is a member of the Australasian Institute of Geoscientists (MAIG) and has sufficient experience which is relevant to the style of mineralisation under consideration and to the activity which he is undertaking to qualify as a Competent Person as defined in the 2004 Edition of the "Australasian Code for Reporting of Exploration Results, Mineral Resources and Ore Reserves" (the JORC Code). Mr Jeff Elliott consents to the inclusion in this report of the Information, in the form and context in which it appears.

Forward-Looking Statements:

This press release contains statements that are "forward-looking". Generally, the words "expect," "intend," "estimate," "will" and similar expressions identify forward-looking statements. By their very nature, forward-looking statements are subject to known and unknown risks and uncertainties that may cause our actual results, performance or achievements, or that of our industry, to differ materially from those expressed or implied in any of our forward-looking statements. Statements in this press release regarding the Company's business or proposed business, which are not historical facts, are "forward looking" statements that involve risks and uncertainties, such as estimates and statements that describe the Company's future plans, objectives or goals, including words to the effect that the Company or management expects a stated condition or result to occur. Since forward-looking statements address future events and conditions, by their very nature, they involve inherent risks and uncertainties. Actual results in each case could differ materially from those currently anticipated in such statements.

Investors are cautioned not to place undue reliance on forward-looking statements, which speak only as of the date they are made.

Figure 1 Location of Sintoukola Potash License and historic drill hole locations.

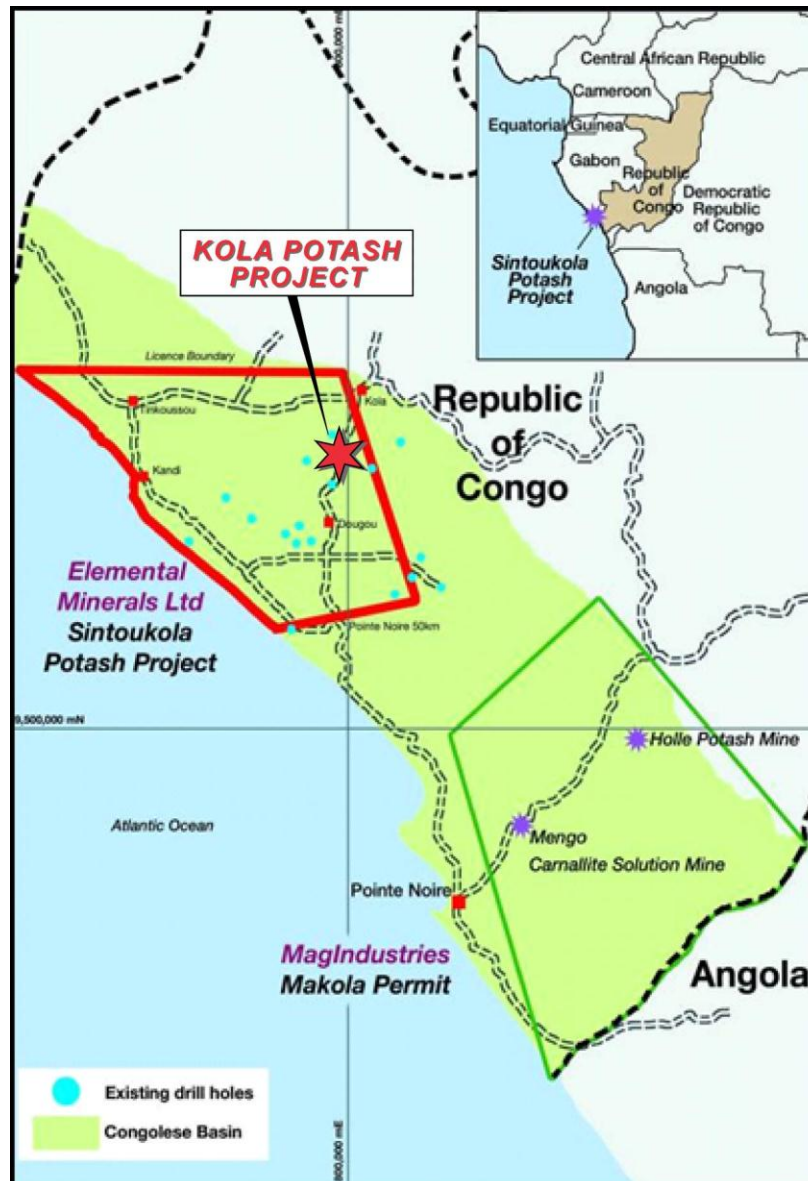
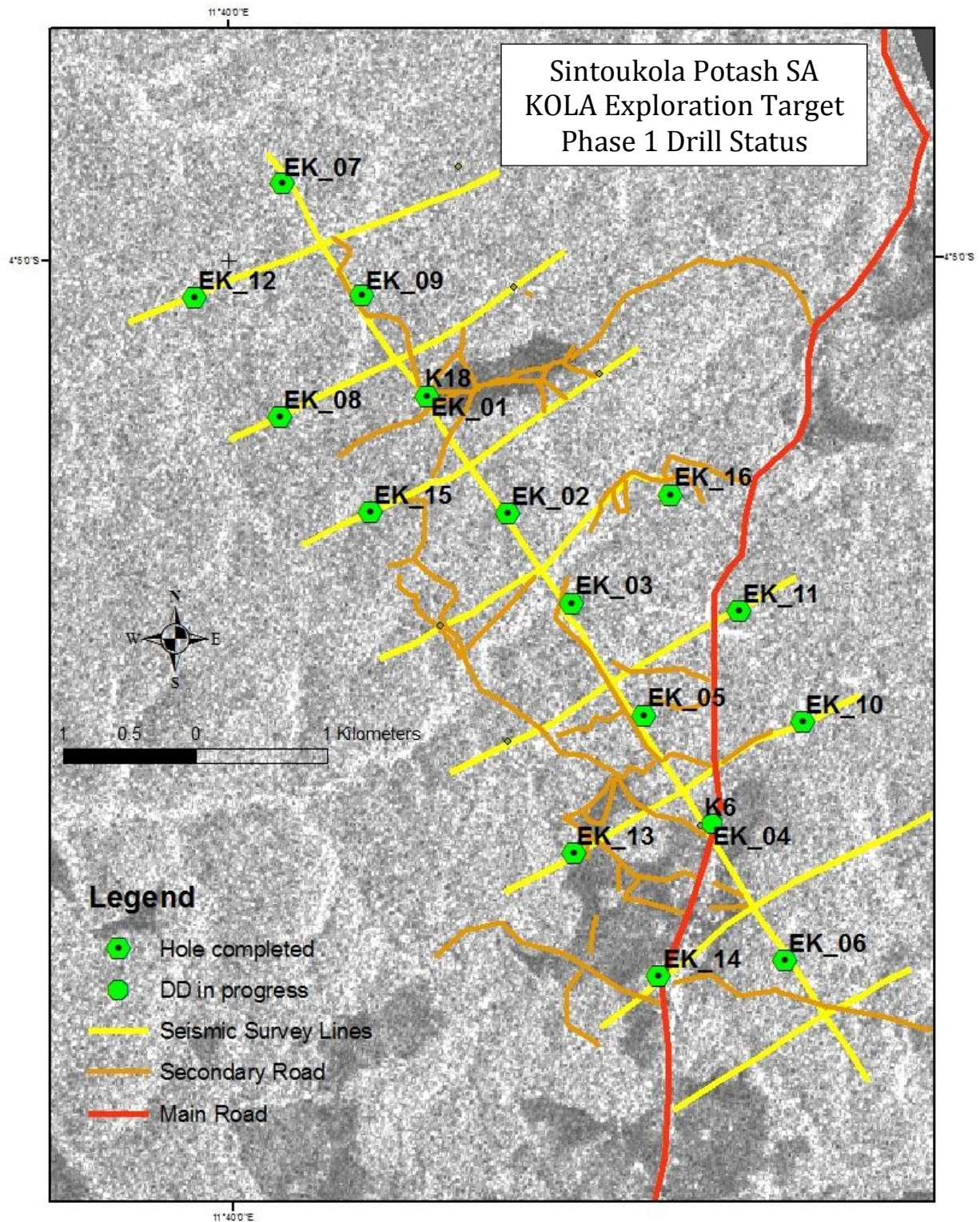


Figure 2: Current drill status



For further information in respect of the Company's activities, please contact:

<i>Mark Jones</i>	<i>Iain Macpherson</i>	<i>John Sanders</i>
<i>Chairman</i>	<i>Managing Director</i>	<i>Executive Director</i>
<i>Tel: +61 (0) 41 9919 250</i>	<i>Tel: +27 (0) 76 238 4461</i>	<i>Tel: +27 (0) 83 445 5291</i>
<i>Email:</i> markj@elementalminerals.com.au	<i>Email:</i> iain.macpherson@elementalmineralsltd.com	<i>Email:</i> john.sanders@elementalmineralsltd.com

Company website: www.elementalminerals.com.au