



ELDORÉ MINING CORPORATION LIMITED
ABN 82 110 884 262

14 April 2011

Company Announcements Office
ASX Limited
20 Bridge Street
Sydney NSW 2000

RE: Additional 1.4km long gold-mineralised structure identified on the Laterite Hill Grid, Burkina Faso

Eldore Mining Corporation Limited (ASX: EDM, “**the Company**”) is pleased to advise that the Company’s farm-in partner, Predictive Discovery Limited (“**Predictive**”) has reported that on the Madyabari permit in the Bonsiega Project, Eastern Burkina Faso, results from power auger drilling have identified a second large mineralised structure on the Laterite Hill grid, 1.4 kilometres long and open both to the west and east. This is in addition to the 3km long mineralised structure reported on 9 March 2011.

Predictive is earning a 60% interest in the Company’s Burkina Faso permits by expending A\$2 million. The full announcement by Predictive is attached.

Yours faithfully

N J BASSETT
Company Secretary

14 April 2011

ASX Announcement



Level 7 Exchange Tower
530 Little Collins Street
Melbourne VIC 3000
ABN 11 127 171 877

p (03) 9909 7990

f (03) 9621 1460

w www.predictivediscovery.com

e info@predictivediscovery.com

ASX Code: PDI

Additional 1.4km long gold-mineralised structure identified on the Laterite Hill Grid, Burkina Faso

Highlights

- Assays from an additional 418 power auger holes of the program covering a 10km prospective strike length received – two thirds of the results now returned.
- New 1.4km long bedrock geochemical anomaly identified in the Dave Prospect area over a new mineralised structure open to the west and east with a peak value of 1 g/t Au.
- Historic RC drilling of the Dave Prospect within this anomaly obtained numerous economic gold intercepts including:
 - 12m at 5.0 g/t Au from 12m
 - 10m at 2.4 g/t Au from 39m
 - 22m at 1.2 g/t Au from 29m
 - 7m at 1.6 g/t Au from 18m
 - 2m at 9.4 g/t Au from 40m
- Two major geochemical anomalies have now been defined at Laterite Hill grid: Laterite Hill over 3km strike length & Dave Prospect area over 1.4km strike length.
- RC drilling on Laterite Hill grid planned for May following RC drilling at the recently acquired Bangaba project.

Predictive Discovery Limited (ASX: PDI) is pleased to announce that, on its Madyabari permit in the Bonsiega Project, Eastern Burkina Faso (Figure 1), results from power auger drilling have identified a second large mineralised structure on the Laterite Hill grid, 1.4 kilometres long and open both to the west and east. This is in addition to the 3km long mineralised structure reported to the ASX by PDI on 9th March 2011.

The gold geochemical anomaly includes the outcropping area around the Dave artisanal workings where previous explorers encountered gold intersections in reverse circulation drilling.

Mr Paul Roberts, PDI's Managing Director stated that *"these new results provide additional confirmation that widespread gold mineralisation is present on the Laterite Hill Grid over extensive strike lengths coincident with major shear structures, identified with our Predictore™ approach, and artisanal workings. While there are many more assays*

still to come, the Company continues to infill and extend the power auger drilling in preparation for reverse circulation drilling scheduled for May”.

Bonsiega Project: Laterite Hill Grid background

The Laterite Hill Grid lies in the Sirba tenement of the Bonsiega project in Eastern Burkina Faso. Predictive Discovery is targeting multi million ounce orogenic gold deposits using its unique Predictore™ approach.

The geochemical sampling grid covers a series of large shear zones interpreted from aeromagnetics using the Predictore™ approach which are coincident with artisanal gold workings and extend over 10km strike length (Figure 2). Most of the workings are located on small areas of outcrop surrounded by recent alluvial sediment, so effective mapping of the gold geochemistry of the underlying bedrock can only be obtained by drilling with a power auger.

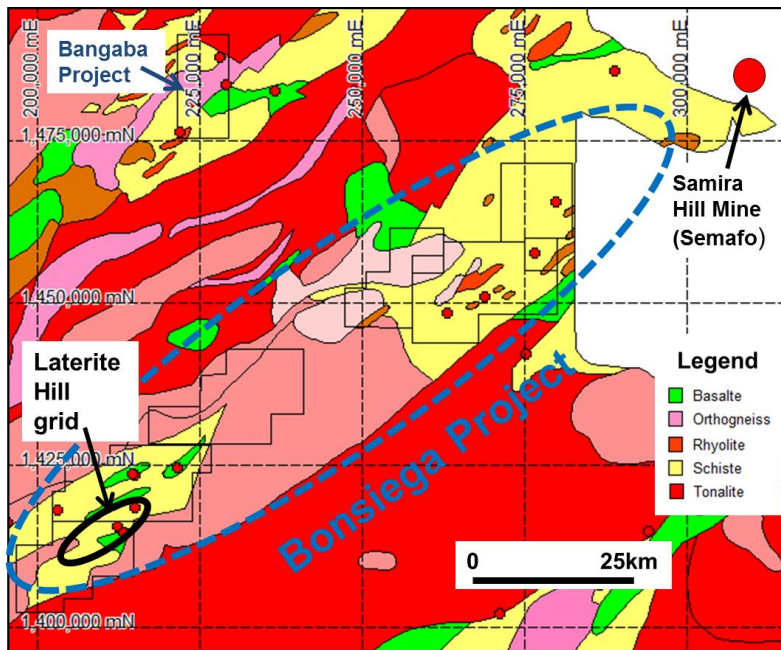


Figure 1: Location of Laterite Hill grid superimposed on Government geological mapping. The red dots are historical artisanal workings recorded in the Government database.

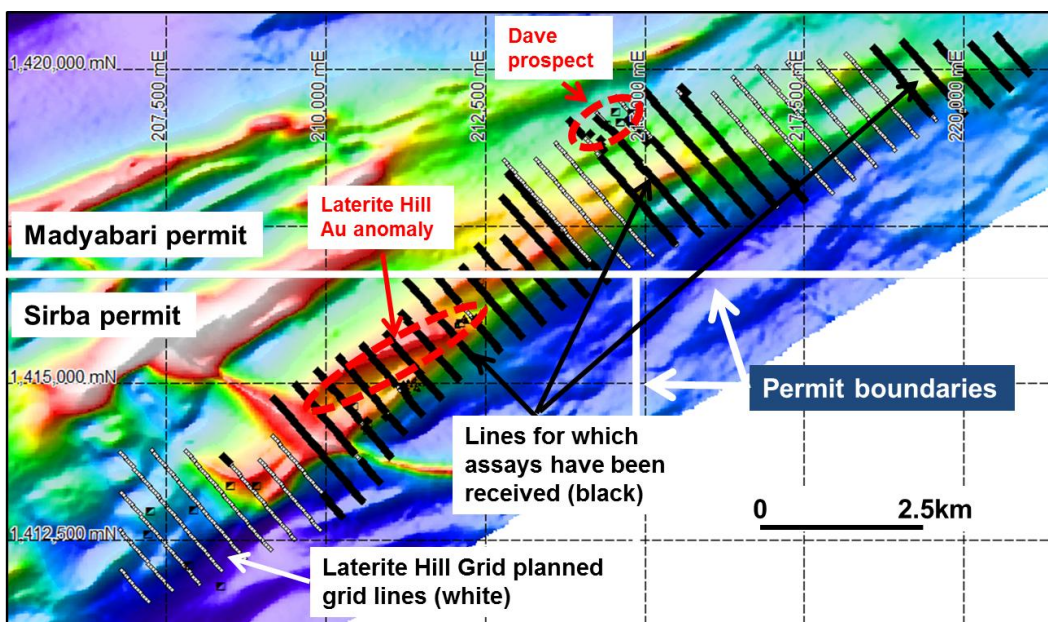


Figure 2: Laterite Hill Grid: location of power auger grid lines on aeromagnetic image showing location of assayed samples received to date.

New Power Auger Results

First pass power auger drilling and sampling of the entire Laterite Hill Grid on the Sirba and Madyabari permits (part of the ElDore Joint Venture – PDI earning 60%) is now complete. Infill sampling is ongoing as new results come to hand. Where holes penetrated through to weathered bedrock, samples were collected at the interface below the superficial material (mostly alluvium) and in the weathered bedrock. In holes which were unable to reach bedrock, samples were taken at the bottom of hole. Analysis was by AAS at Abilabs laboratory in Bamako, Mali with a quoted detection limit of 2ppb Au.

Assays have been received from **418 additional holes** drilled to an average depth of around 6 metres bringing total assay coverage to a little under two thirds of the first phase sampling on the Laterite Hill Grid. The highlight is a 1.4km long plus 50ppb gold anomalous zone in the vicinity of the Dave Prospect workings. The highest assay was obtained from a saprolite sample and contained 984 ppb (1 g/t Au). This zone is open to both the west and east and correlates with a large structure interpreted from aeromagnetic data which extends under cover to the west where it remains untested.

Part of the Dave Prospect area was drilled in 1996-97 by Emerging African Gold (**EAG**), who completed 32 angled RC holes to 50m depth on 20m centres on 8 lines 100m apart. As at the Laterite Hill Prospect (ASX release 9th March 2011), the precise location of the drill hole collars is uncertain. Reported results from this drilling included the following very encouraging intercepts:

Line number	Hole number	From depth (m)	Interval (m)	Au (g/t)
1	Dave 05	2	5	1.5
2	Dave 08	12	12	5.0
2	Dave 08	29	6	1.7
2	Dave 09	21	3	1.1
2	Dave 10	1	9	1.1
3	Dave 14	18	7	1.6
3	Dave 15	45	5	1.1
4	Dave 17	40	2	9.4
4	Dave 18	30	3	1.4
6	Dave 22	19	2	2.7
6	Dave 23	16	3	1.6
6	Dave 23	39	10	2.4
6	Dave 24	13	7	1.3
6	Dave 24	25	3	3.0
6	Dave 24	46	4	1.1
6	Dave 25	6	3	3.4
6	Dave 25	25	11	1.2
6	Dave 25	49	1	11.7
8	Dave 29	4	3	3.6
8	Dave 29	29	22	1.2

Planned Exploration – Laterite Hill Grid

One of the Company's two contracted power auger rigs is currently undertaking infill sampling on 200m x 25m centres on the Laterite Hill Grid to better define the anomalous areas as results come to hand. In addition, the western

extension of the Dave prospect will be tested shortly. Once received, all the geochemical data from the entire area will be combined with Predictore™ analysis to design an RC drilling program which is scheduled to commence in May 2011.

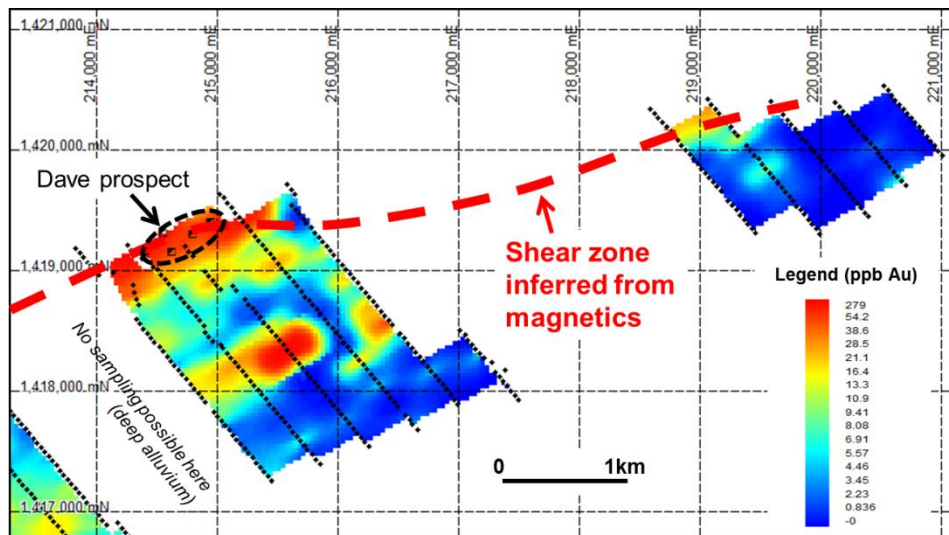


Figure 3: Image of gold geochemical assays from the power auger drilling.

About Predictive Discovery:

Predictive Discovery Limited (PDI) was established in late 2007 to explore for gold and uranium. The Company is focused principally on exploration for gold in West Africa with two additional projects for uranium and gold in Australia. PDI has a distinctive technological capability, known as Predictore™, which is designed to increase drill targeting efficiency thereby reducing ore discovery cost. The Company's major focus is in Burkina Faso, West Africa where it is exploring for large open-pit gold ore deposits.

The exploration results reported herein, insofar as they relate to mineralisation, are based on information compiled by Mr Paul Roberts (Fellow of the Australian Institute of Geoscientists). Mr Roberts has sufficient experience relevant to the style of mineralisation and type of deposits being considered to qualify as a Competent Person as defined by the 2004 Edition of the Australasian Code for Reporting of Exploration Results, Mineral Resources and Ore Reserves (the JORC Code, 2004 Edition). Mr Roberts consents to the inclusion in the report of the matters based on his information in the form and context in which it appears.

For further details please contact:

Paul Roberts
Managing Director
Tel: + 61 8 9474 7710
Email: paul.roberts@predictivediscovery.com