

Gullewa Limited

MINERALS: NEW SOUTH WALES



Gullewa Limited

Important Notice and Disclaimer

This presentation has been prepared by Gullewa Limited ACN 007 547 480 (Company), and is being provided for the sole purpose of providing preliminary background information to enable recipients to review the business activities of the Company. It is not intended as an offer, invitation, solicitation or recommendation with respect to the purchase or sale of any securities.

This presentation should not be relied upon as a representation of any matter that a potential investor should consider in evaluating the Company. It is not a disclosure document nor does it constitute the provision of financial product advice. The Company, nor any of its directors, agents, officers, employees, advisers or affiliates does not make any representation or warranty, express or implied, as to the endorsement of, or the accuracy or completeness of, any information, statements, representations or forecasts contained in this presentation. No responsibility or liability is accepted and any and all responsibility and liability is expressly disclaimed by the Company and its directors, agents, officers, employees, advisers and affiliates for any errors, misstatements, misrepresentations in or omissions from this presentation. The Company accepts no obligation to correct or update anything in this presentation.

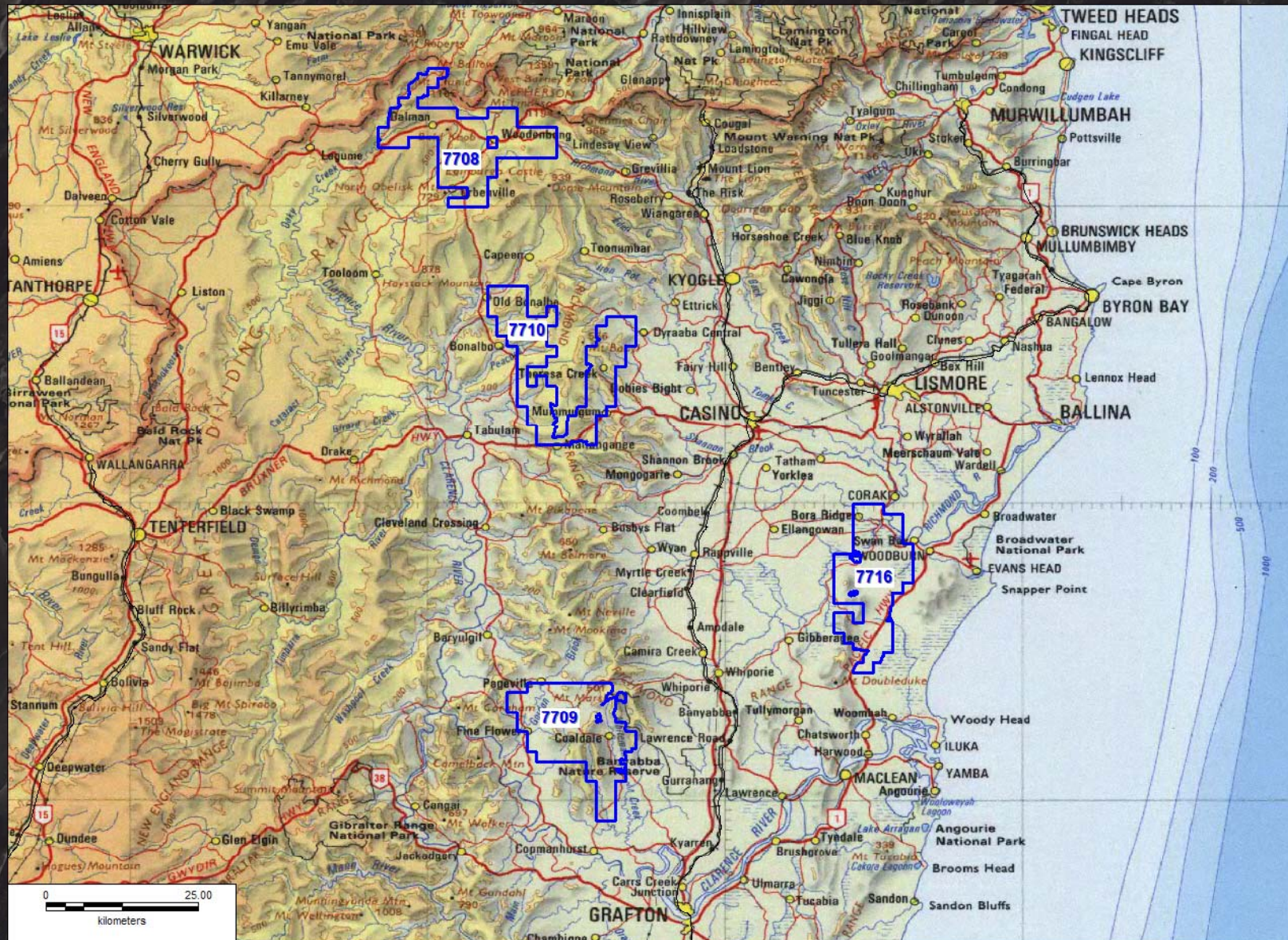
Known and unknown risks and uncertainties, and factors outside of the Company's control, may cause the actual results, performance and achievements of the Company to differ materially from those expressed or implied in this presentation.

This presentation does not contain all information which would be material to making a decision in relation to the Company. Prospective investors should make their own independent evaluation of an investment in the Company.

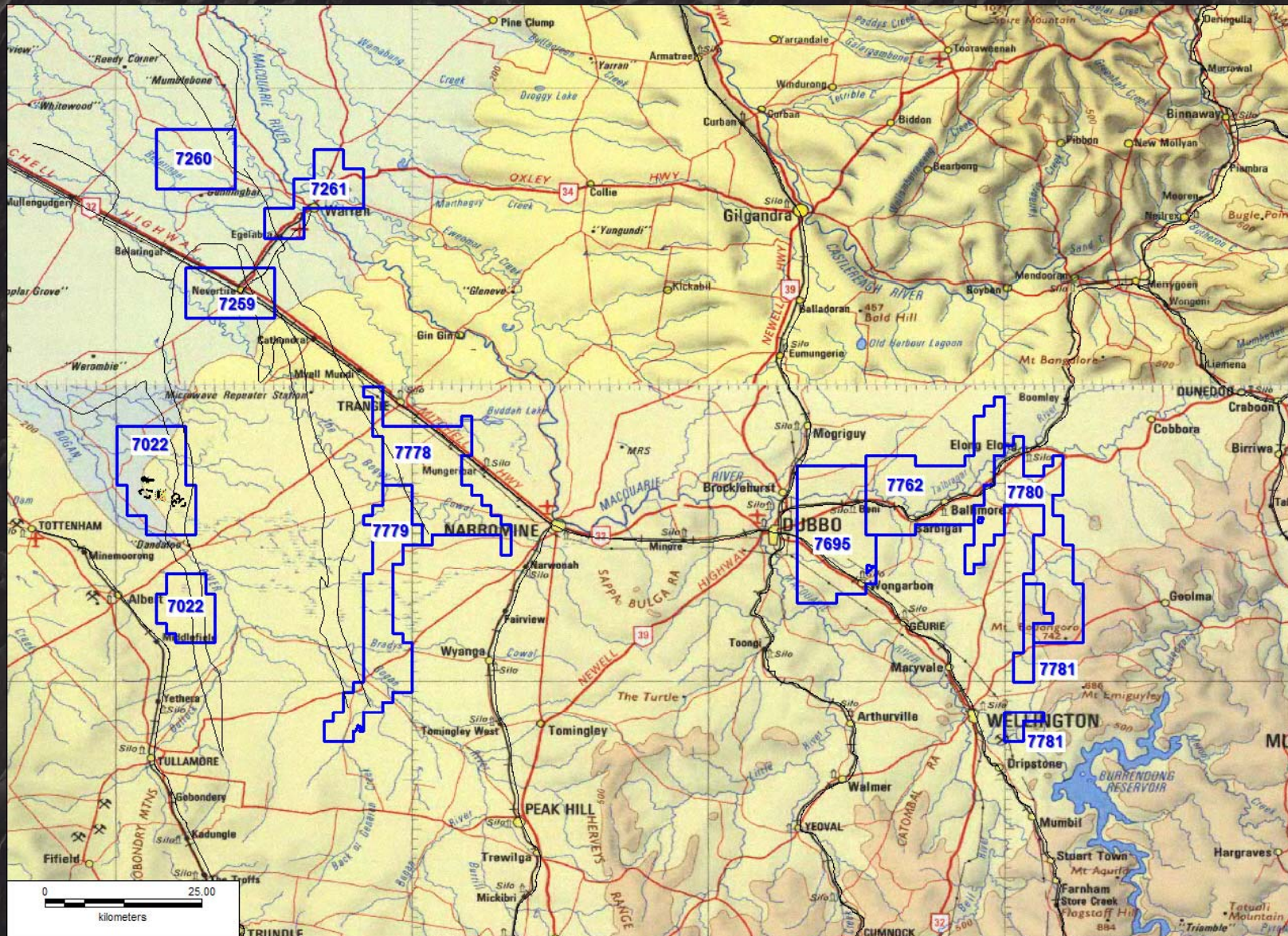
Competent Person

The exploration information in this presentation is based on information compiled by Mr Garry Baglin who is a Member of The Australasian Institute of Mining and Metallurgy and Chief Geologist of Gullewa Limited. Mr Baglin has sufficient experience which is relevant to the style of mineralisation and types of deposits under consideration and to the activity which he is undertaking to qualify as a Competent Person as defined in the 2004 Edition of the "Australasian Code for Reporting of Exploration Results" Mineral Resources and Ore Reserves". Mr Baglin consents to the inclusion in this presentation of the matters based on his information in the form and the context in which it appears.

Gullewa Group Tenements : Clarence - Moreton Region

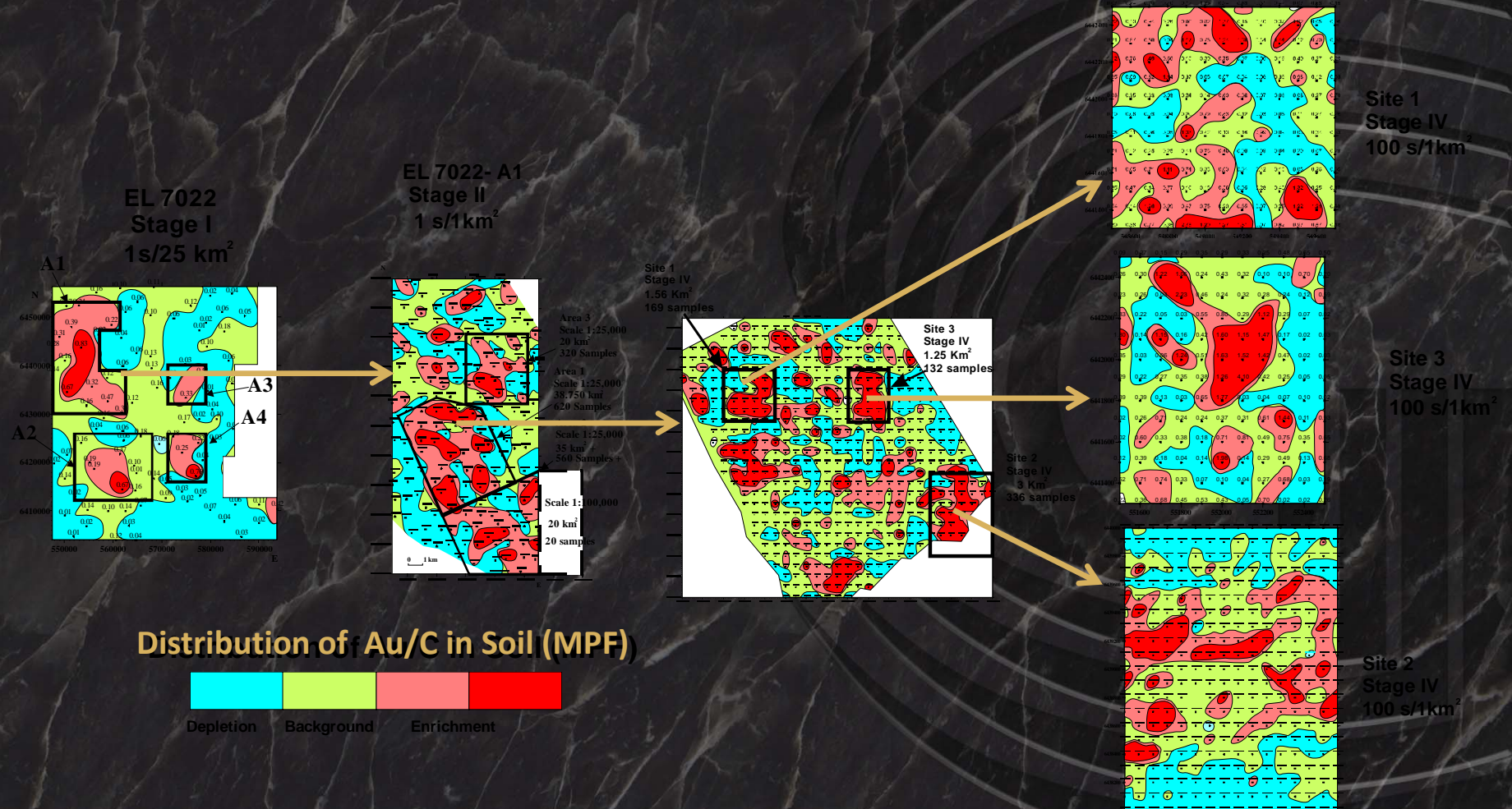


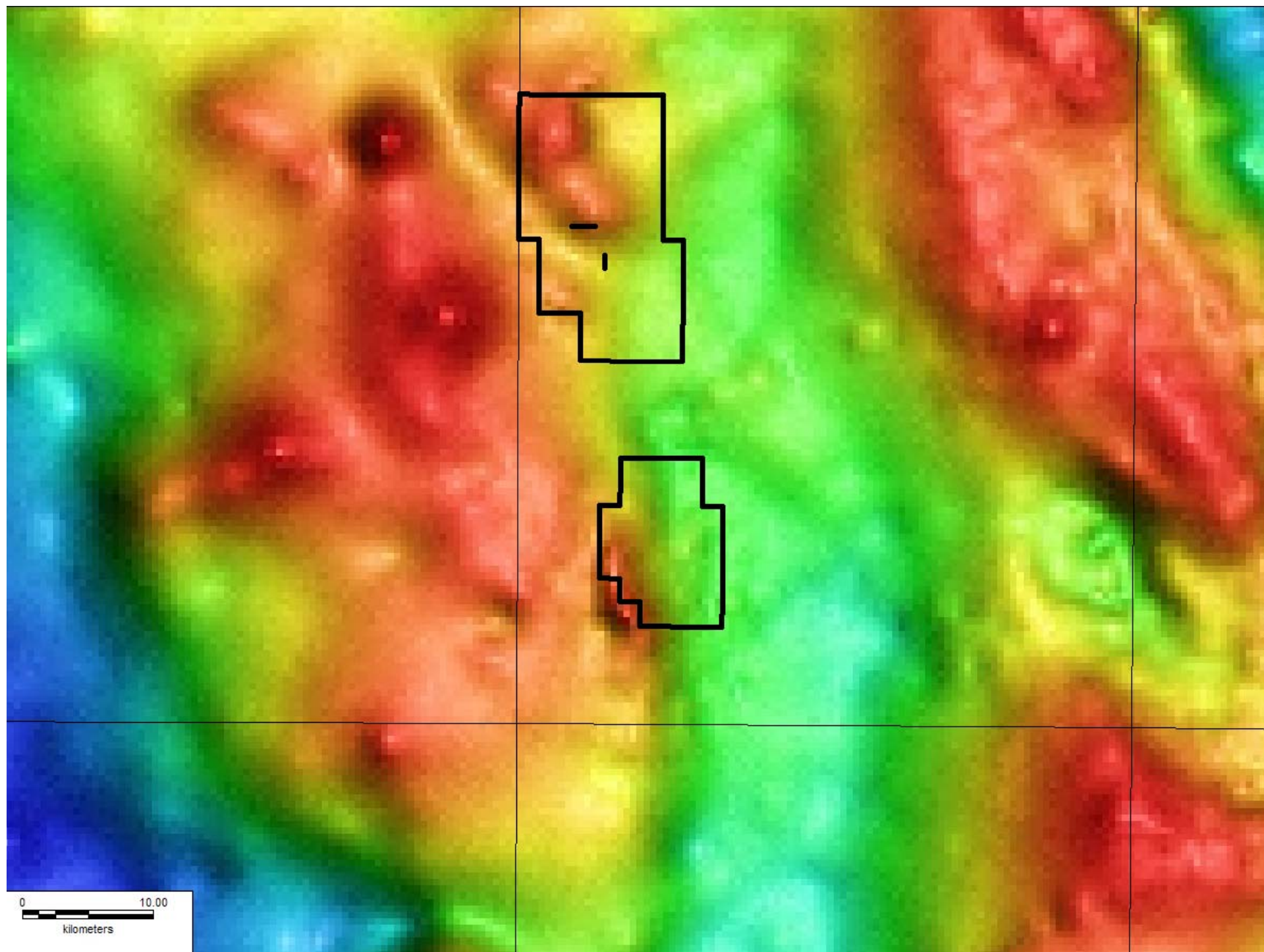
Gullewa Group Tenements : Narromine – Dubbo Region

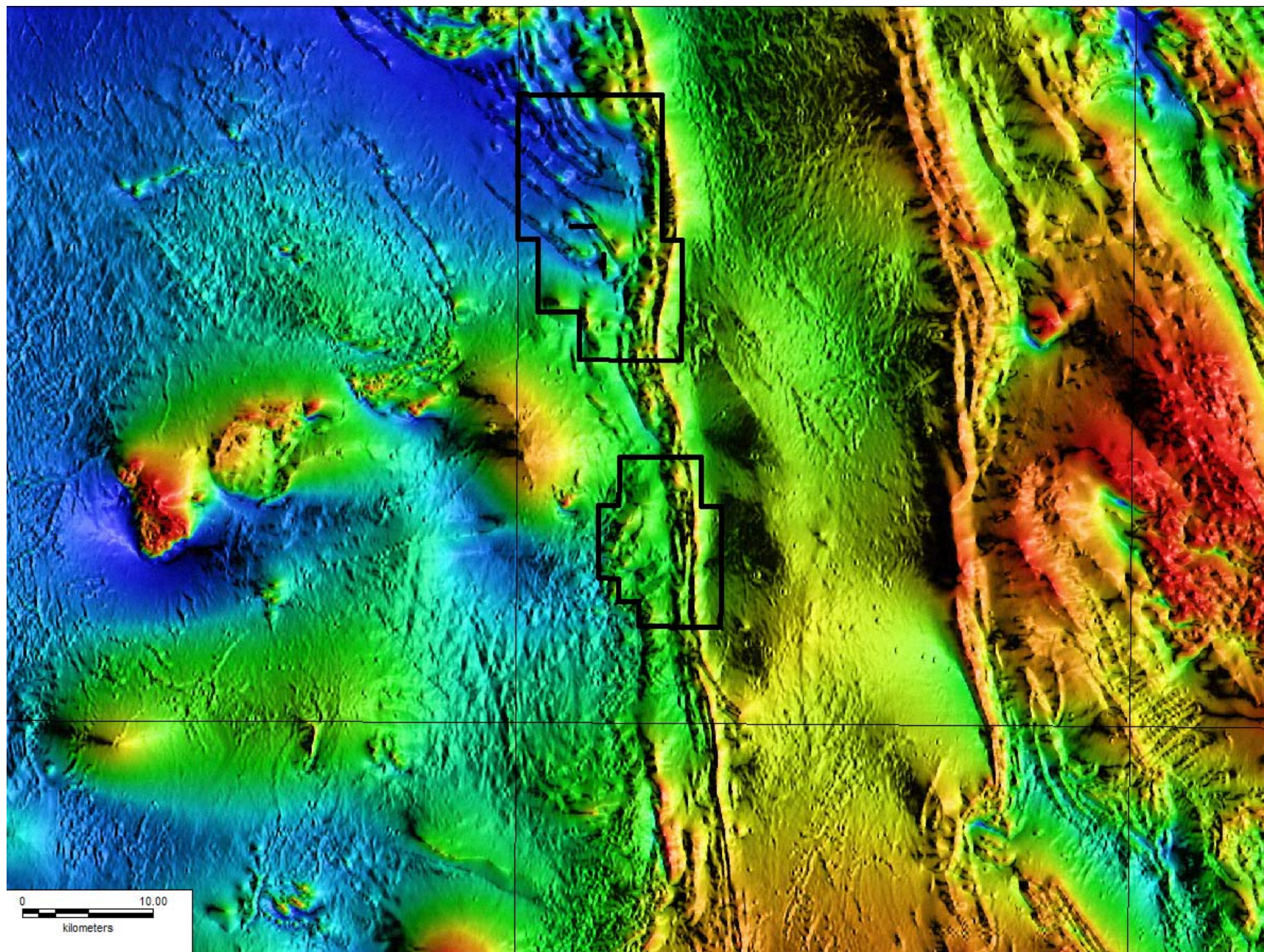


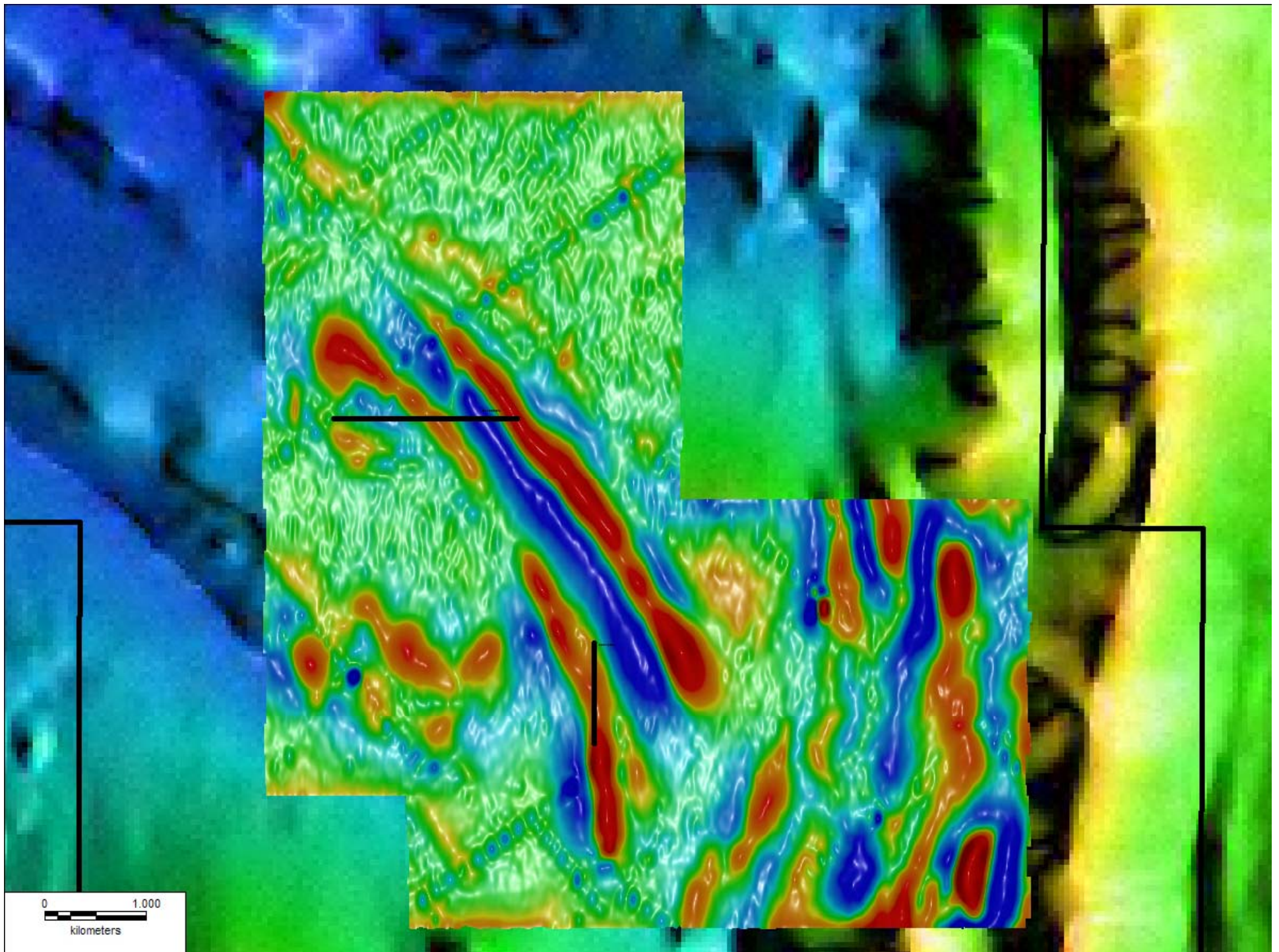
Exploration from Stage I to Stage IV

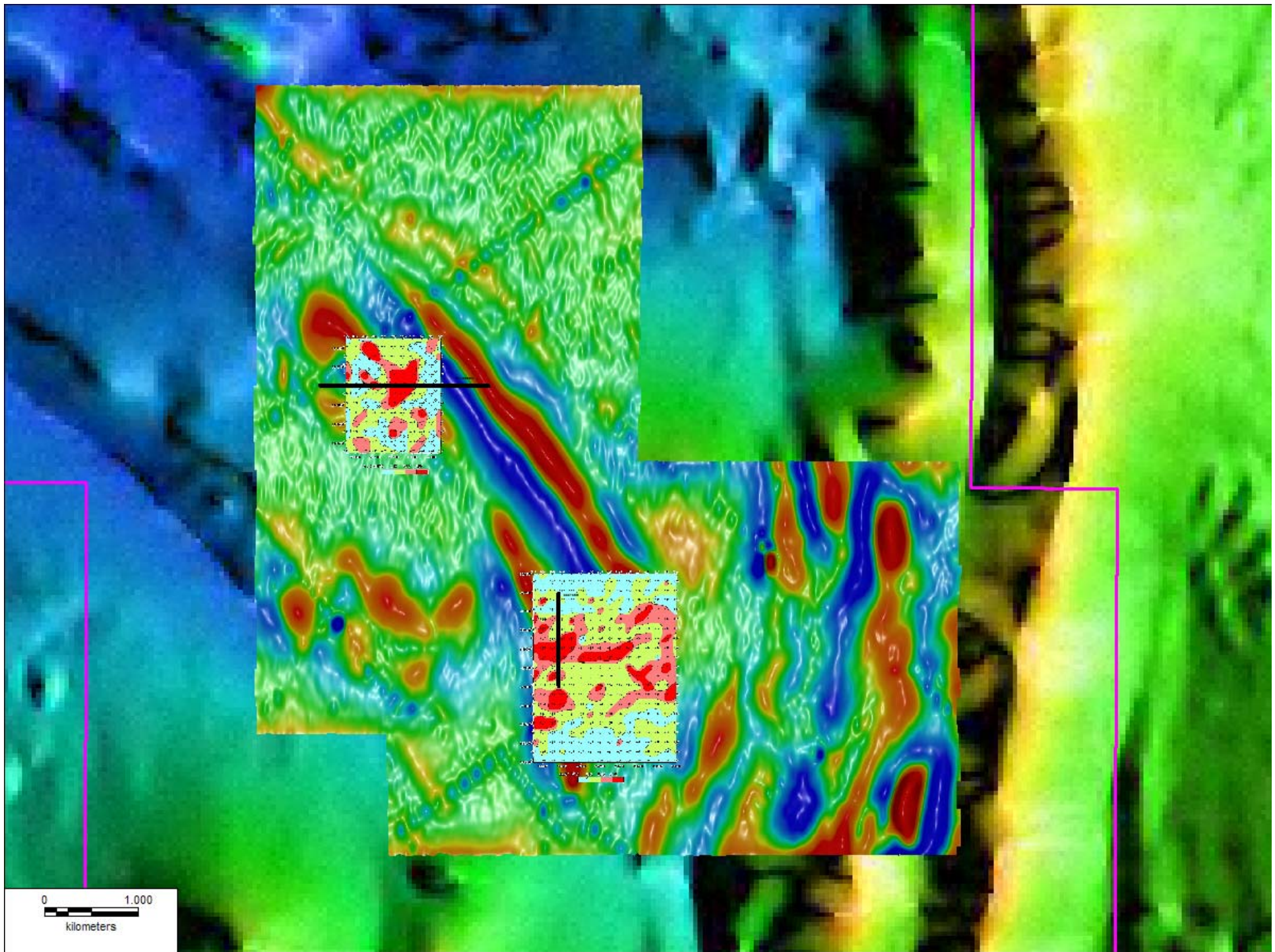
Dandaloo Project

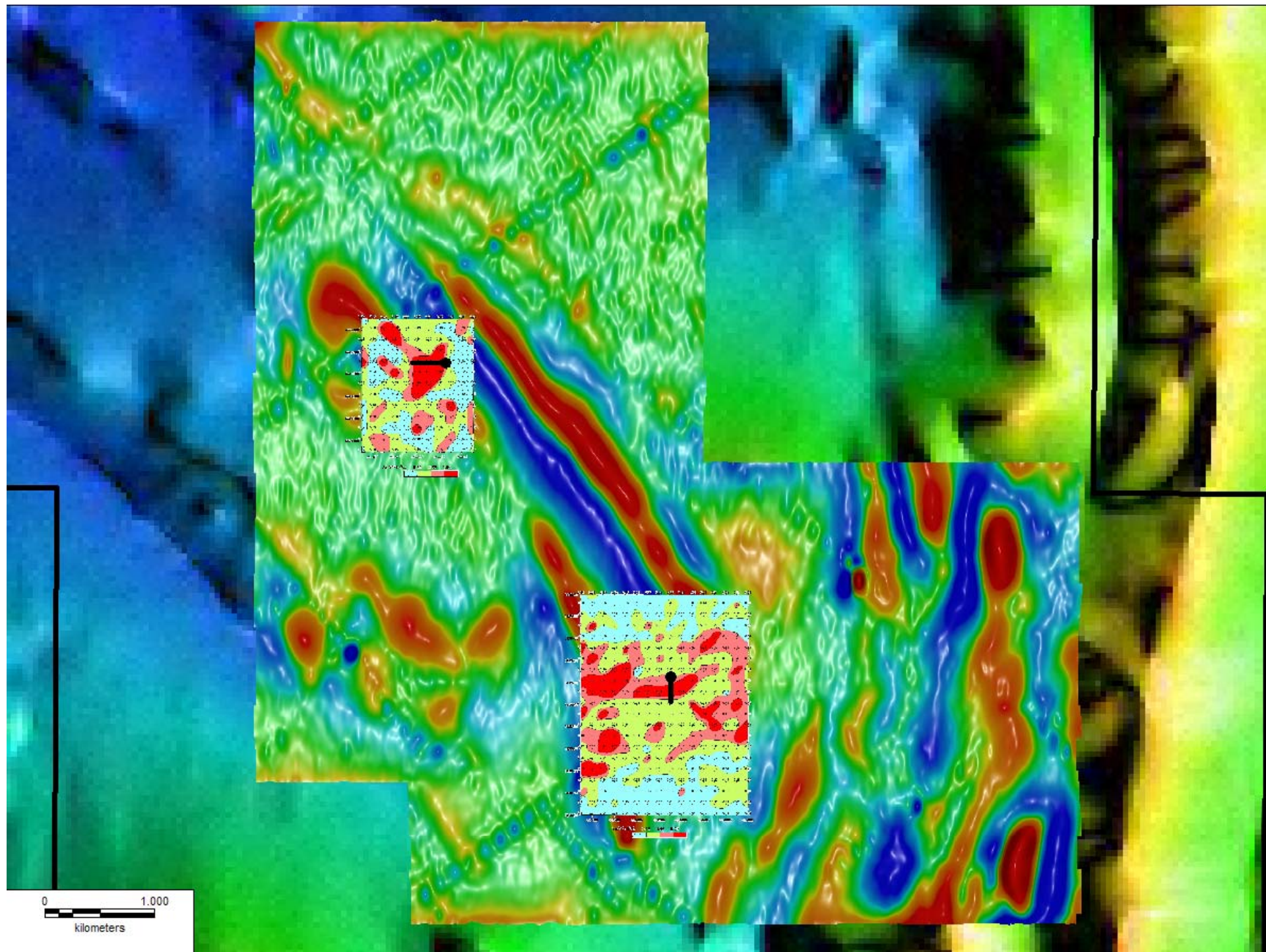




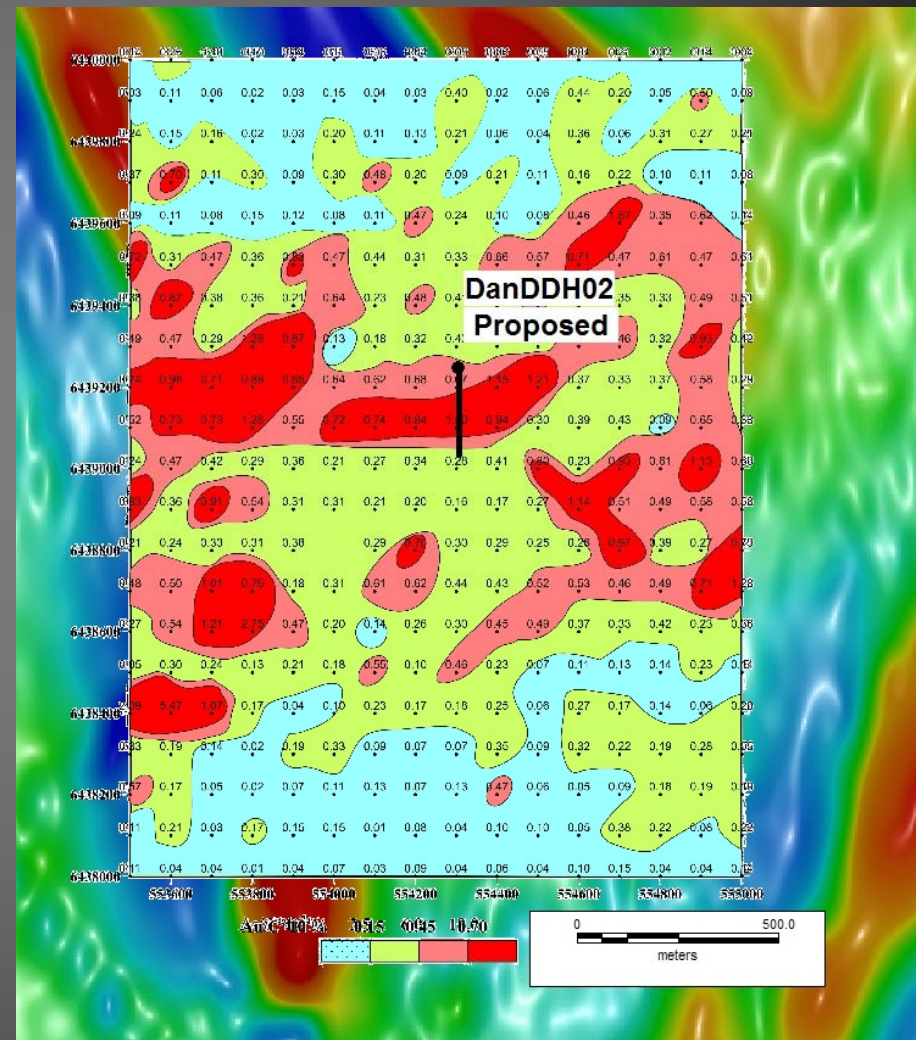
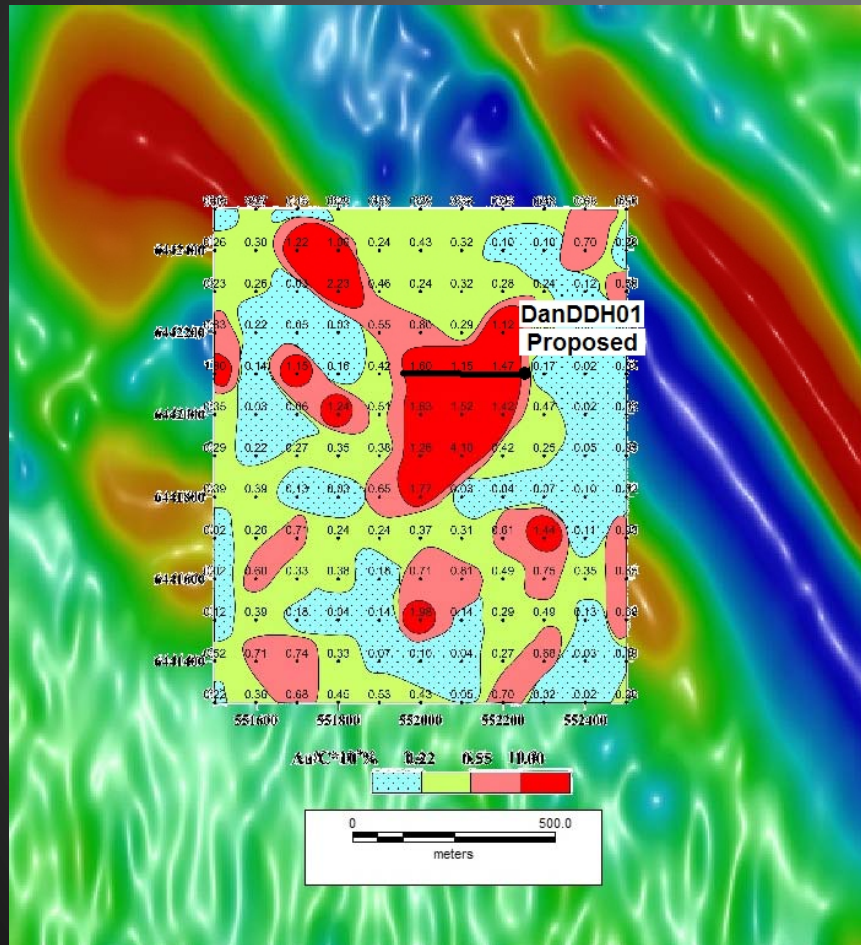


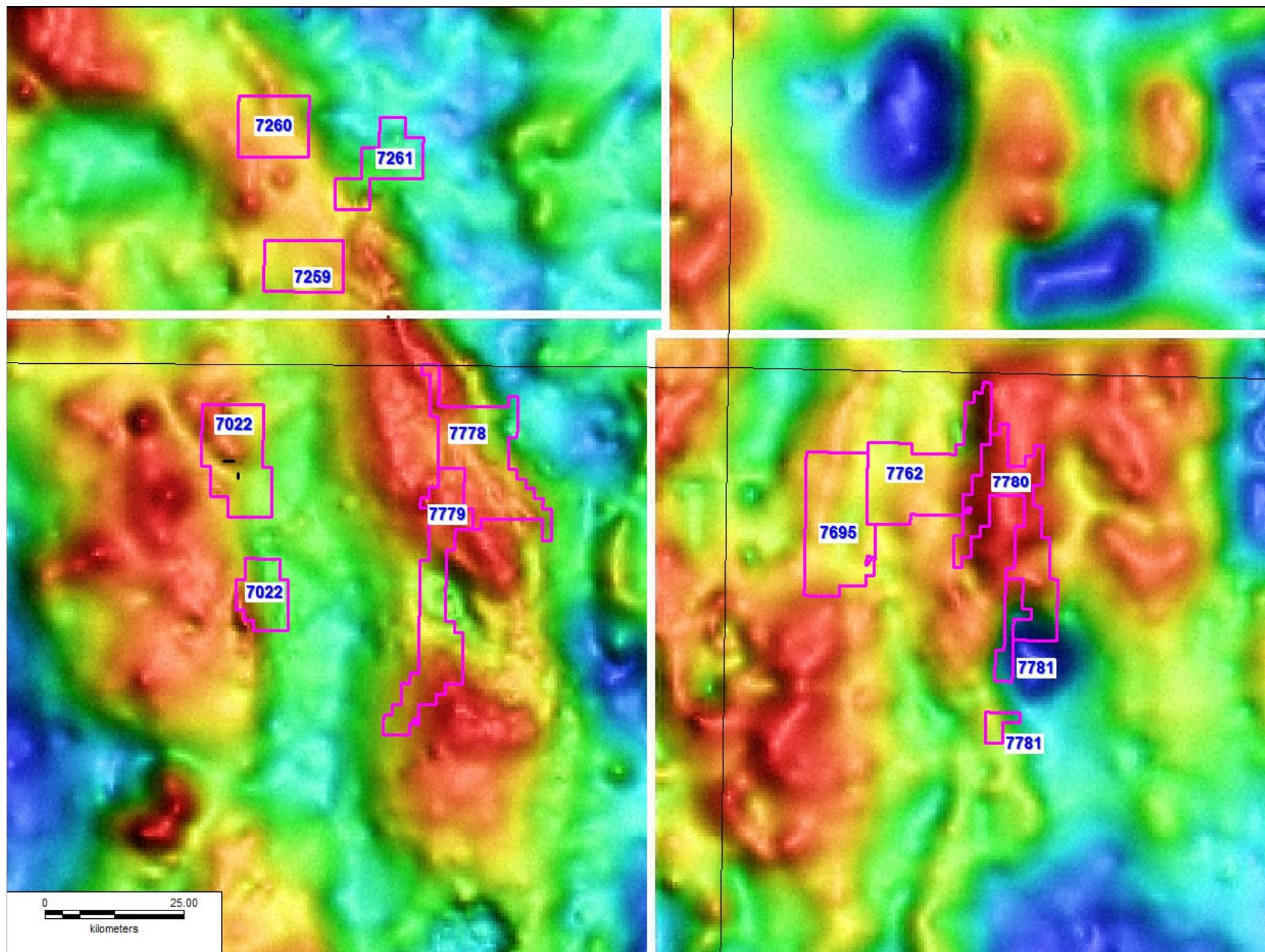


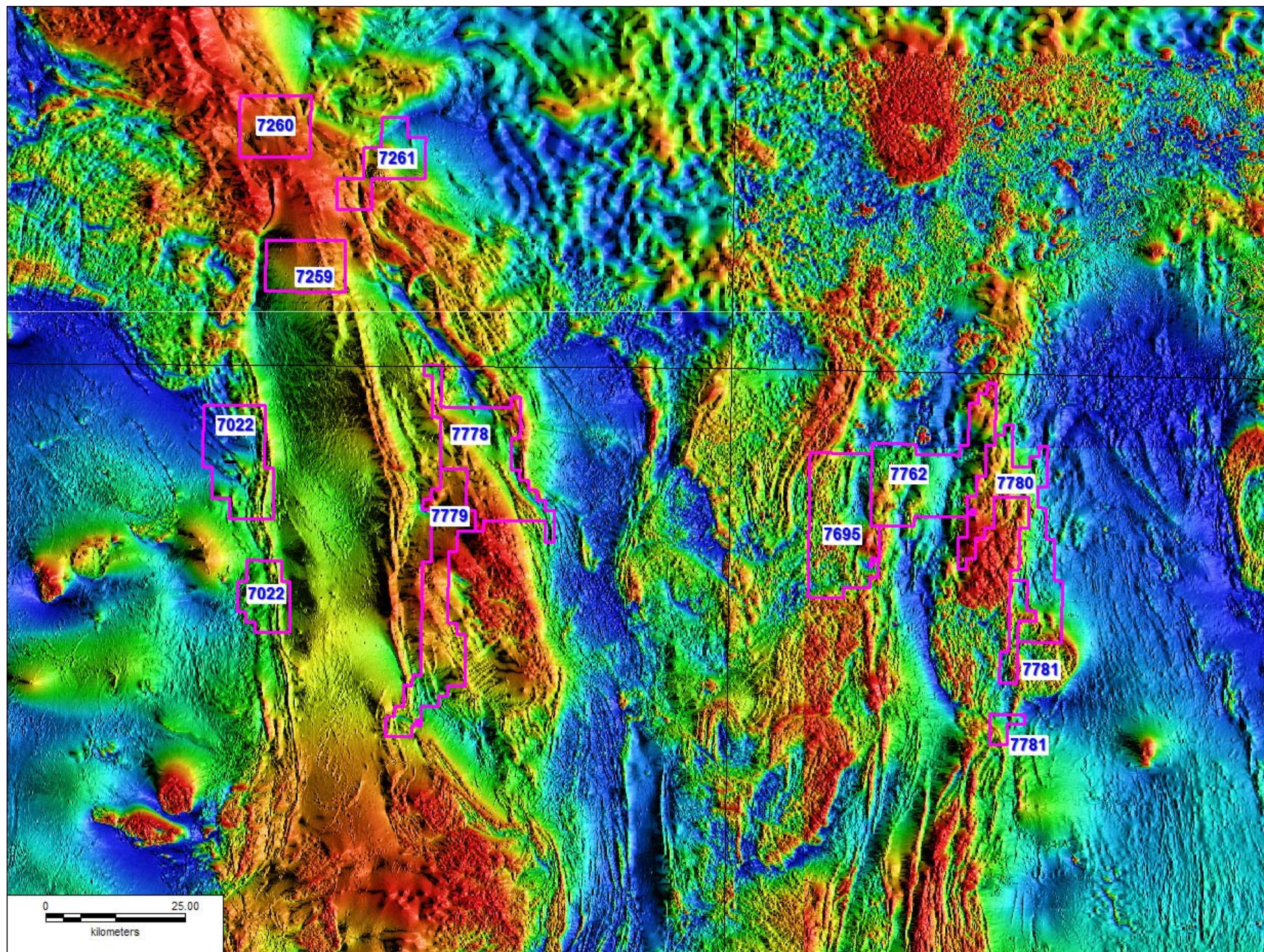


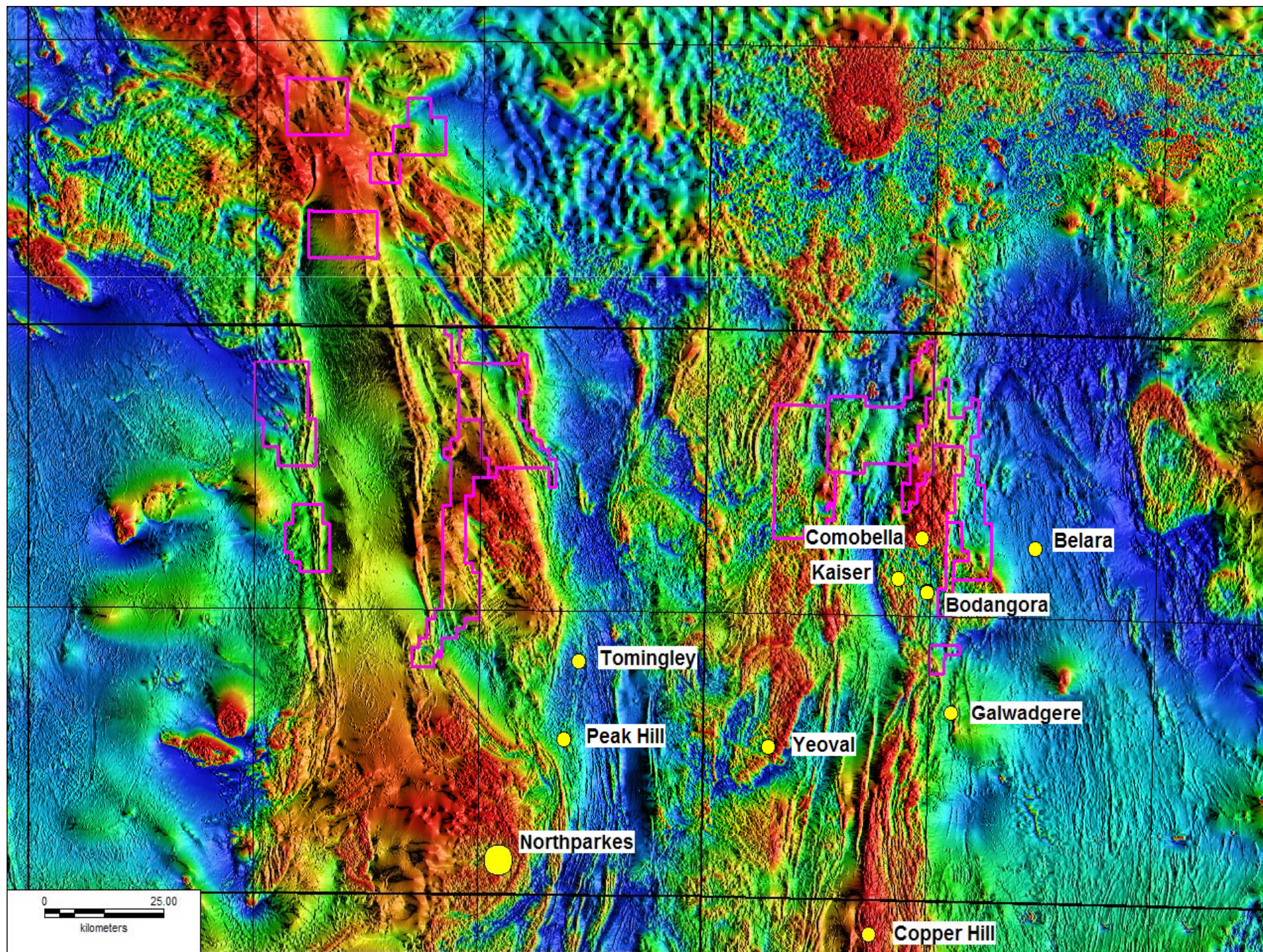


Dandaloo – Proposed Drill holes











The best is yet to come