



Anthony Molybdenum Project

Zamia Metals Limited

presented by

Dr Ken Maiden . Executive Chairman



ZAMIA

Disclaimer - Forward-Looking Statements

This document contains certain "forward-looking statements", including, but not limited to, statements concerning current and future drilling programmes, estimation of mineral resources, the continuing development plan, the type of mineralisation present and expected results. Information inferred from the interpretation of drilling results may be deemed to be a forward looking statement, as it constitutes a prediction of what might be found to be present when and if a project is actually developed. Statements and estimates concerning mineral resources may also be deemed to be forward looking statements in that they involve estimates, based on certain assumptions, regarding the mineralisation that would be encountered if and when a mineral deposit is actually developed and mined. Forward looking statements are not historical facts, and are subject to a number of risks and uncertainties beyond management's control. There can be no assurance that such statements will prove to be accurate. Actual results and future events could differ materially from those anticipated in such statements. Risks and uncertainties that could cause results or future events to differ materially from current expectations expressed or implied by the forward-looking statements include, among other things, but without limitation, those set forth in the Annual Report and the website (www.zamia.com.au) of Zamia Metals Limited ('Zamia').

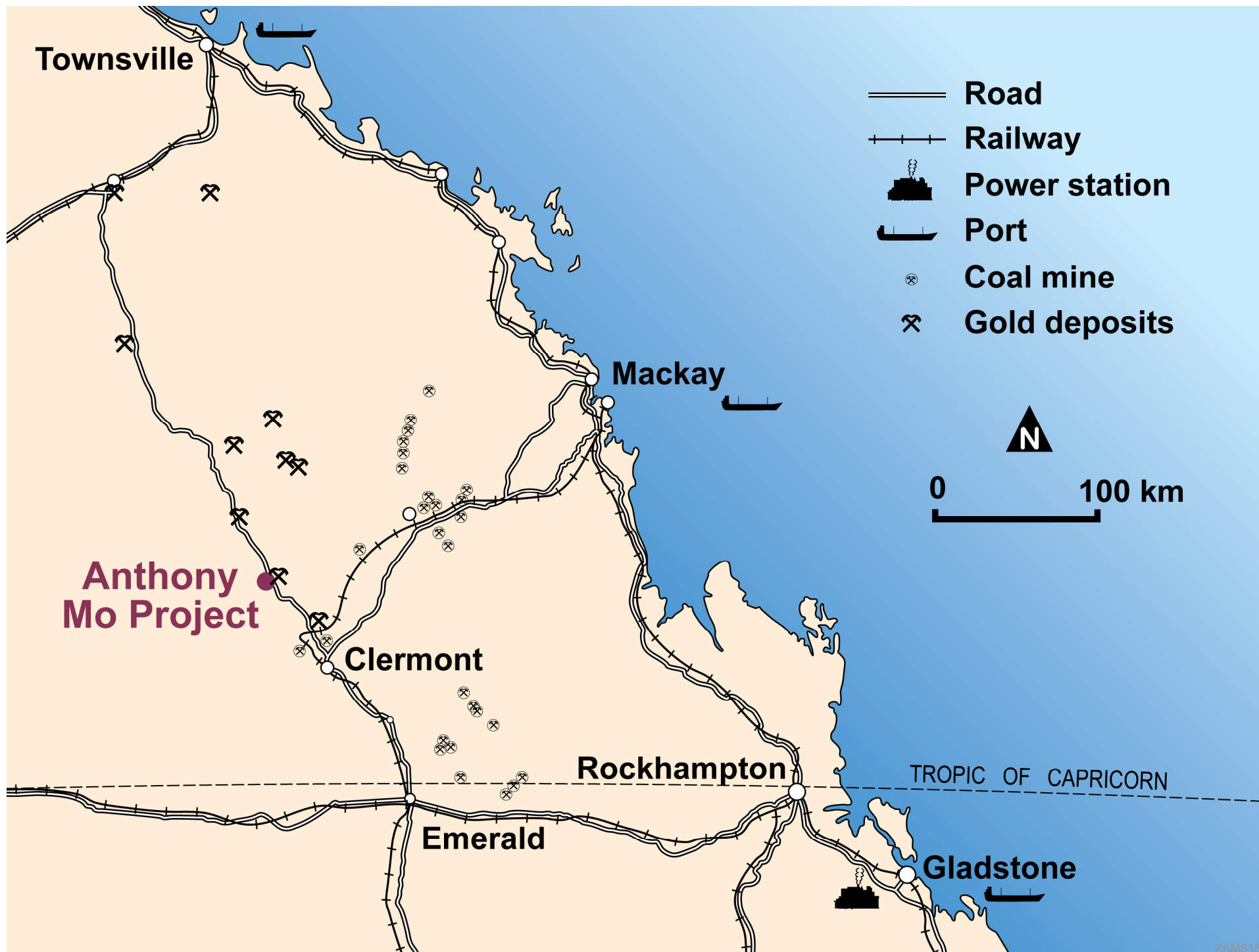
For more information about the Company's properties and projects, please refer to the Annual Report.

The technical information contained in this document was compiled by Dr Ken Maiden (MAIG, FAusIMM), Executive Chairman of Zamia Metals Limited. Dr Maiden is a Member of the Australian Institute of Geoscientists and a Fellow of the Australasian Institute of Mining and Metallurgy. He has sufficient experience to qualify as a Competent Person as defined in the September 2004 edition of the *"Australasian Code for Reporting of Exploration Results, Mineral Resources and Ore Reserves"*. Dr Maiden consents to the inclusion of the matters in the form and context in which they appear.



ASX:ZGM







ZAMIA

Advantages of Queensland

- **Good infrastructure**
- **Plenty of power**
- **Plenty of water**
- **Good tenement management system**
- **Queensland is a mining-friendly state**



ASX:ZGM

An aerial photograph of a landscape featuring a large yellow dashed circle in the center. Two arrows point from text labels to specific locations: one points to a cluster of buildings in the top right, and the other points to a small pond within the dashed circle. The terrain is a mix of green fields, brown patches, and some trees.

Belyando gold mine

Anthony Mo deposit

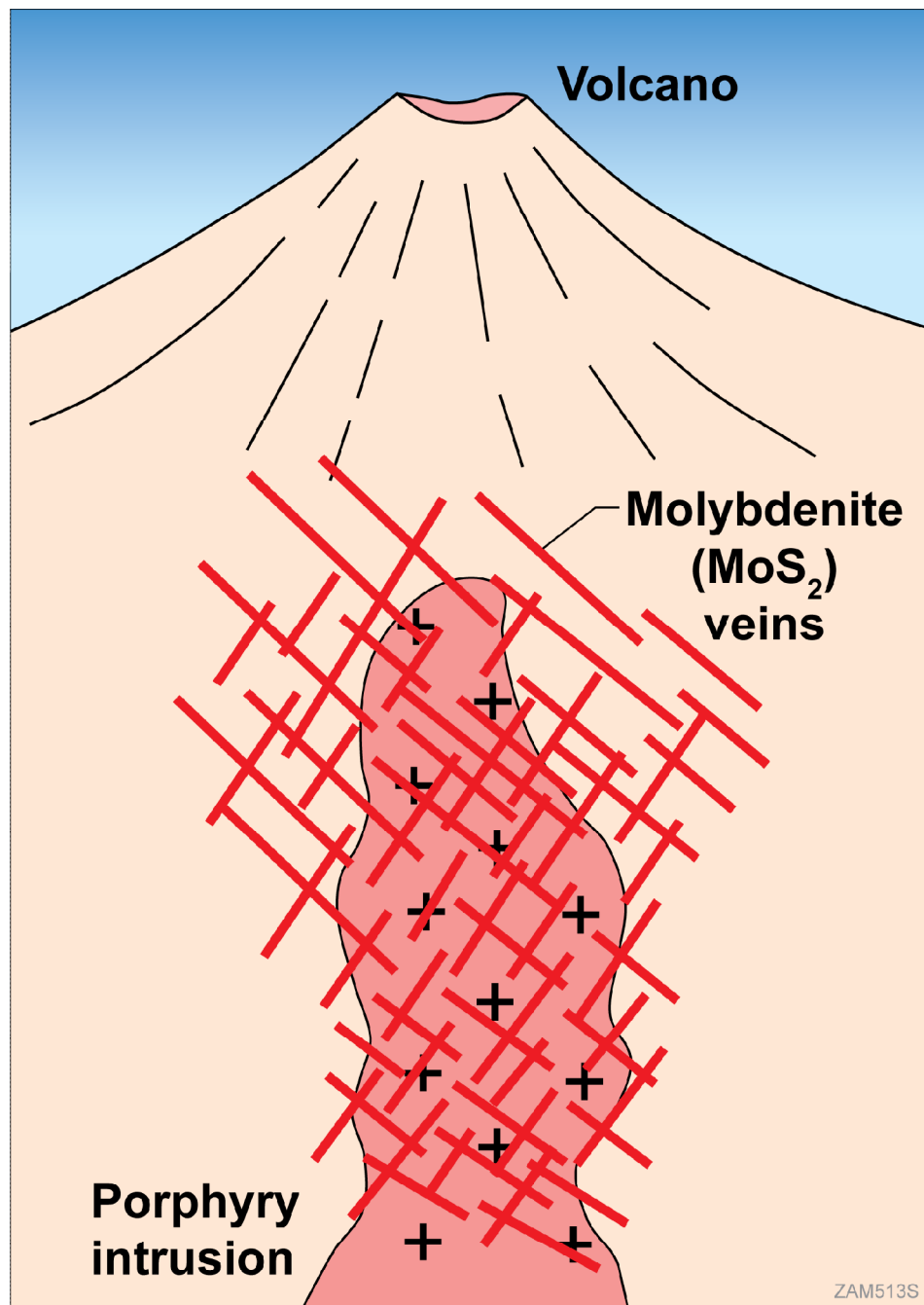


Geological Setting

400 million years ago ...

**Central Queensland was an
active volcanic area -**

- “ igneous intrusions**
- “ volcanic eruptions**
- “ hydrothermal activity**



Geological Setting

Hydrothermal activity

→ rock alteration

→ deposits Mo Au Cu

**Molybdenite
oxidised to
Mo-Fe oxide**

Geological Setting

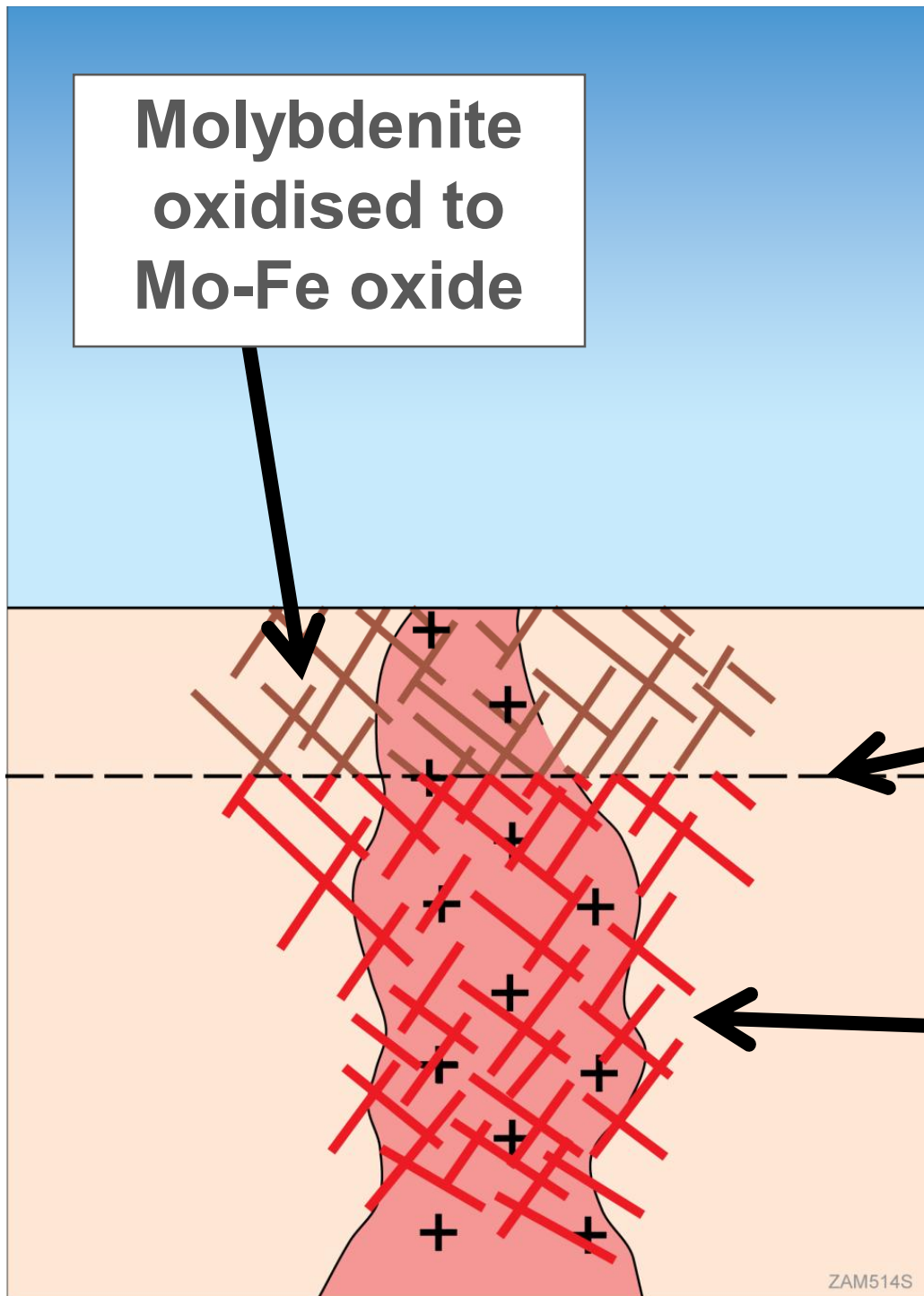
**Eroded & oxidised
(weathered) to 60 –
80m depth**

**Base of
weathering**

**Primary
molybdenite**

ASX:ZGM

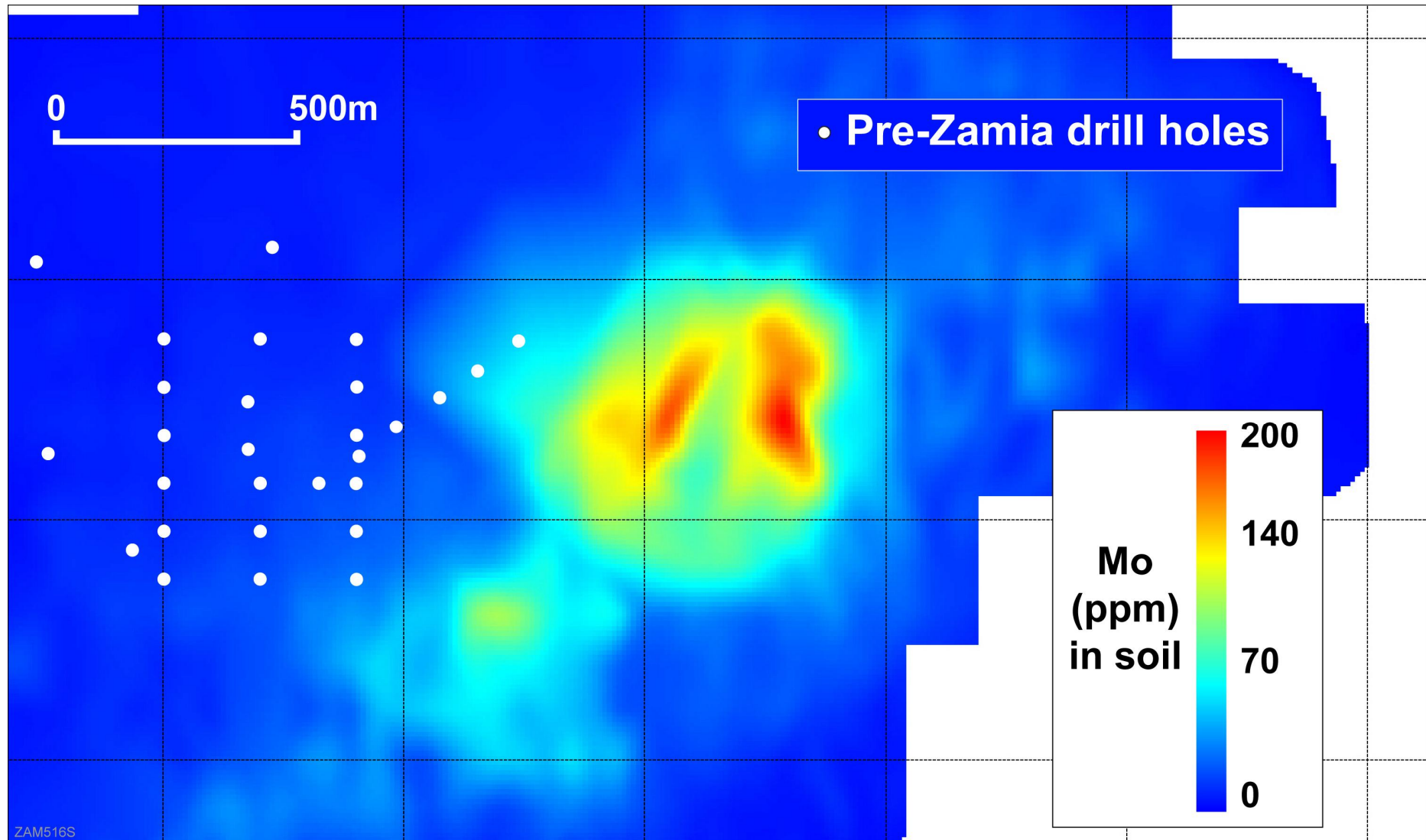
ZAM514S





ZAMIA

Geochemistry: Mo-in-Soil



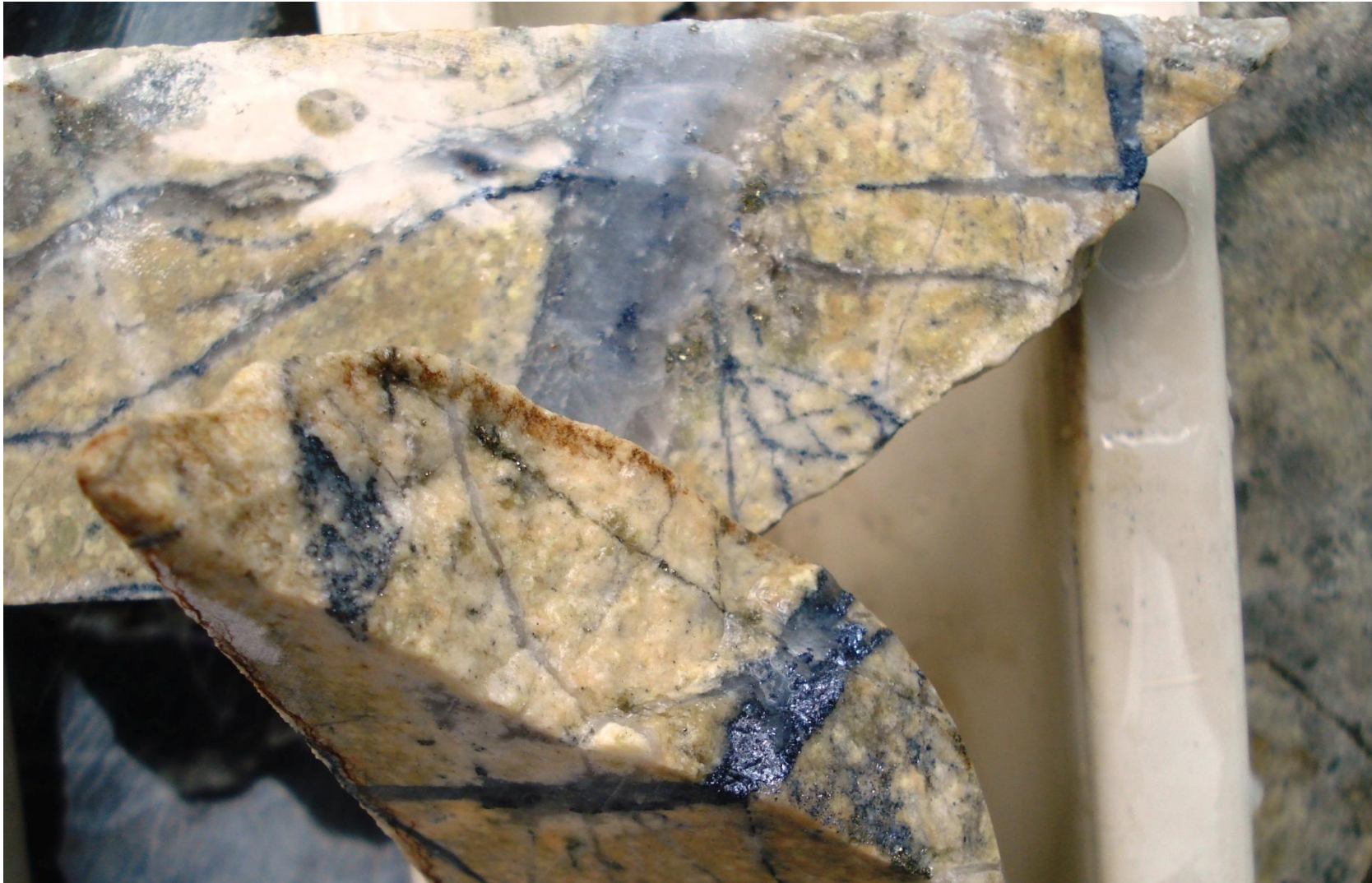


Drilling - November 2009



ZAMIA

What does it look like?

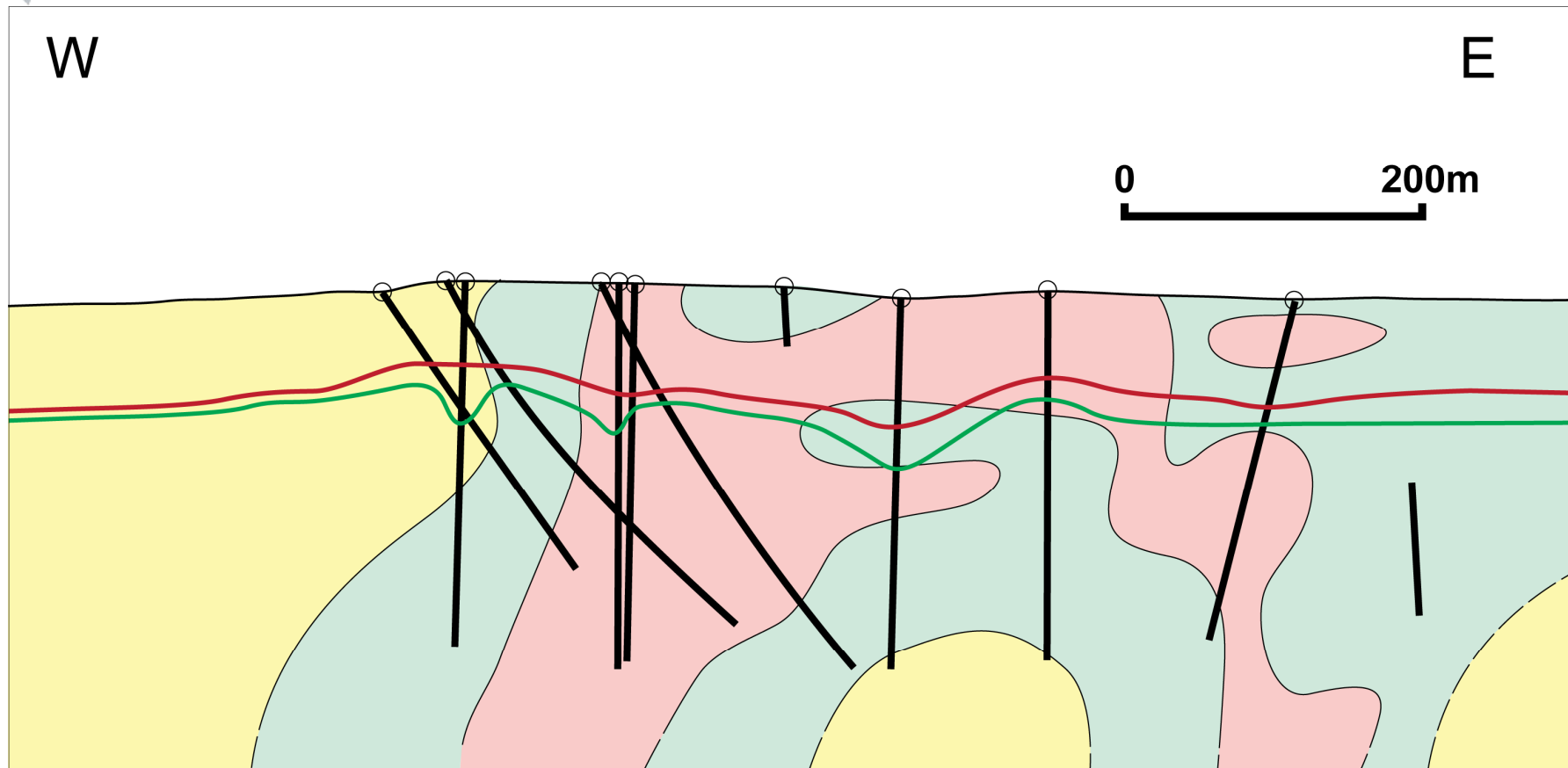


ASX:ZGM



ZAMIA

Section 2800N



< 200 ppm Mo 200 - 500 ppm Mo > 500 ppm Mo

Base of complete oxidation Base of partial oxidation



ASX:ZGM

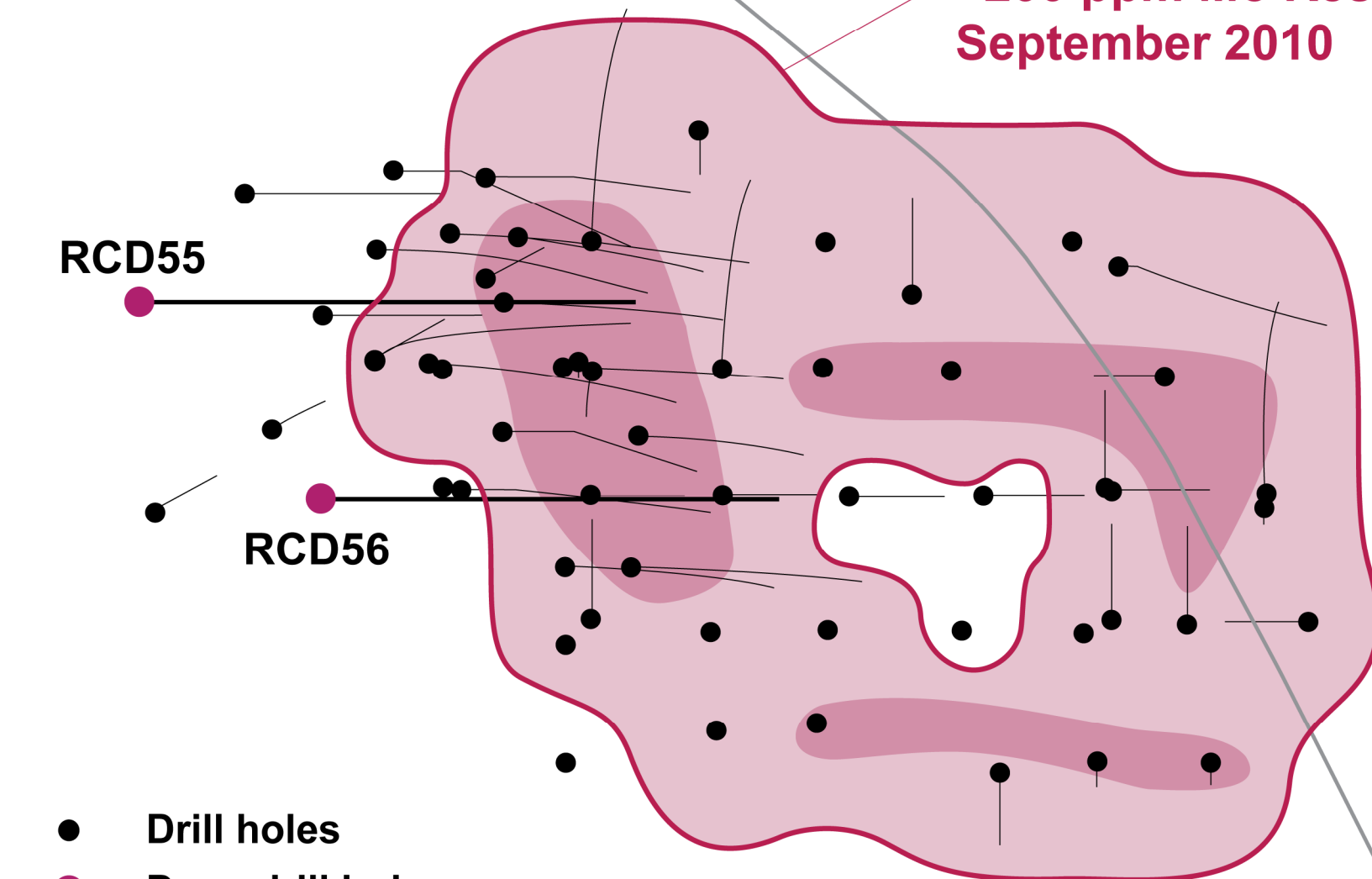
**+200 ppm Mo Resource
September 2010**

RCD55

RCD56

- Drill holes
- Deep drill holes
- High grade Mo near surface
- Gregory Development Road

0 200m





ZAMIA

Anthony Resource

| Cut-off grade ppm Mo | Resource Mt | Average grade ppm Mo | Mo metal tonnes Mo |
|-------------------------------------|------------------------|-------------------------------------|-------------------------------|
| 200 | 130 | 400 | 52 000 |
| 400 | 60 | 550 | 33 000 |
| 600 | 15 | 730 | 10 950 |

Additional oxide / transitional resource:

63 Mt at 400 ppm Mo (at 200 ppm cut-off)

Inferred Resource estimate by Dr P Hellman of consultants Hellman & Schofield Pty Ltd, September 2010, reported in accordance with JORC Code & Guidelines



ASX:ZGM



ZAMIA

Upgrading of Sulphide Mo Ore

Preliminary tests → sulphide Mo ore can be upgraded by a simple beneficiation process

| | Average for eight drill core samples |
|---|---|
| Head grade | 408 ppm Mo |
| Grade of pre-conc product | 973 ppm Mo |
| Mo grade of balance | 270 ppm Mo |
| Weight % of beneficiated product | 20.3% |



ASX:ZGM



ZAMIA

Upgrading of Sulphide Mo Ore

Based on existing resource -

- High grade feedstock of 24 Mt at 1,000 ppm Mo**
- Process high grade in early years of operation**
- Higher project returns**
- Lower grade stockpile to be processed later in life of project**



ASX:ZGM



Flotation Tests

Initial external locked cycle tests -

” + 50% Mo grade

” + 85% recovery

(expected to reach +90% with further testing)

” Low levels of deleterious elements (Cu As Pb)

” Rhenium (Re) by-product





ZAMIA

Simple Flowsheet

- ” **Crush to -10 mm**
- ” **Pre-concentrate**
- ” **Grind 80% -75 microns**
- ” **Flotation → Mo concentrate**



ASX:ZGM



ZAMIA

Oxide / Transitional Resource

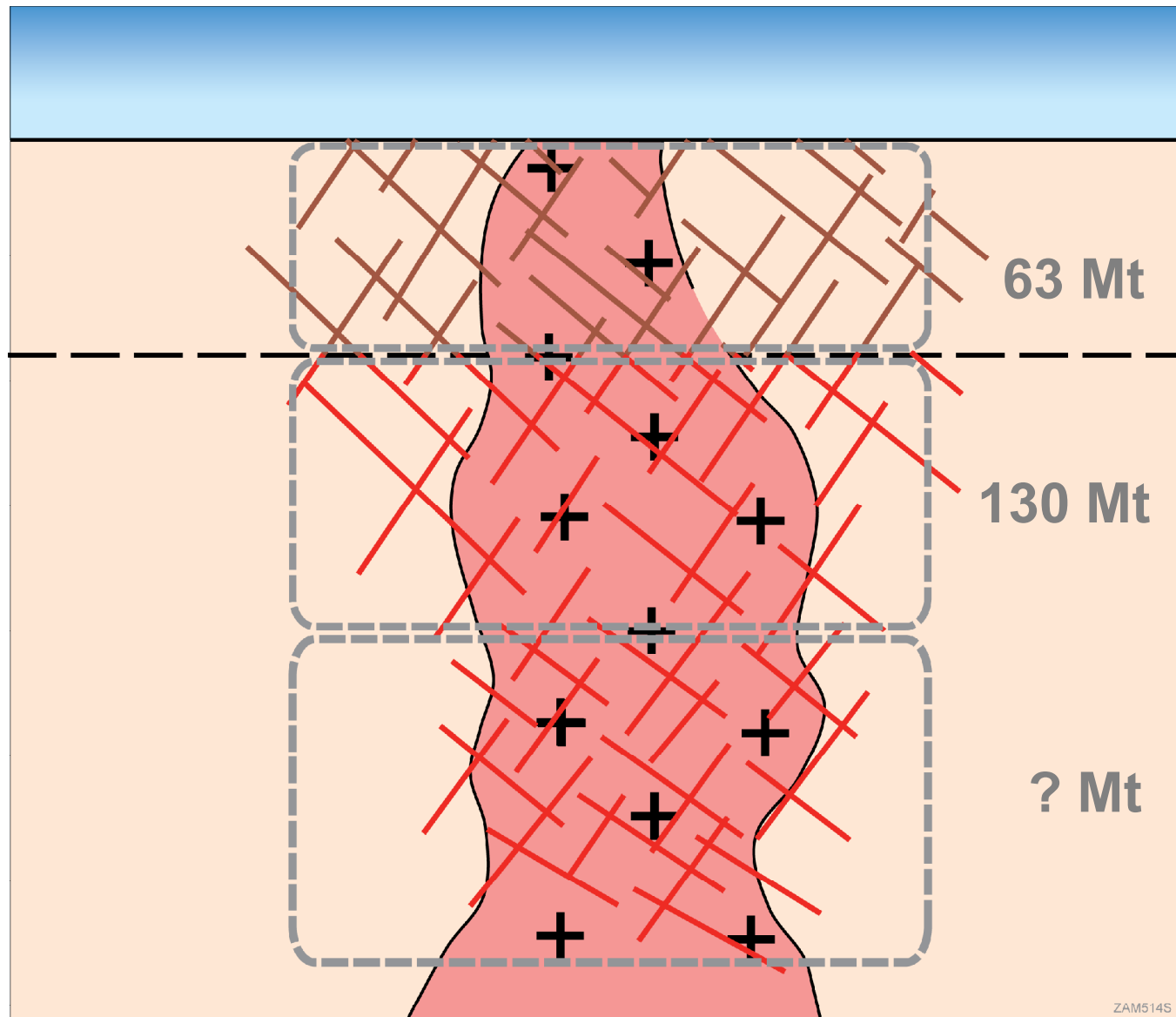
- “ Deposit weathered (oxidised) to 60 – 80m depth
- “ Inferred Resource - 63 Mt at 400 ppm Mo
- “ Metallurgical tests in progress





ZAMIA

Resource Potential



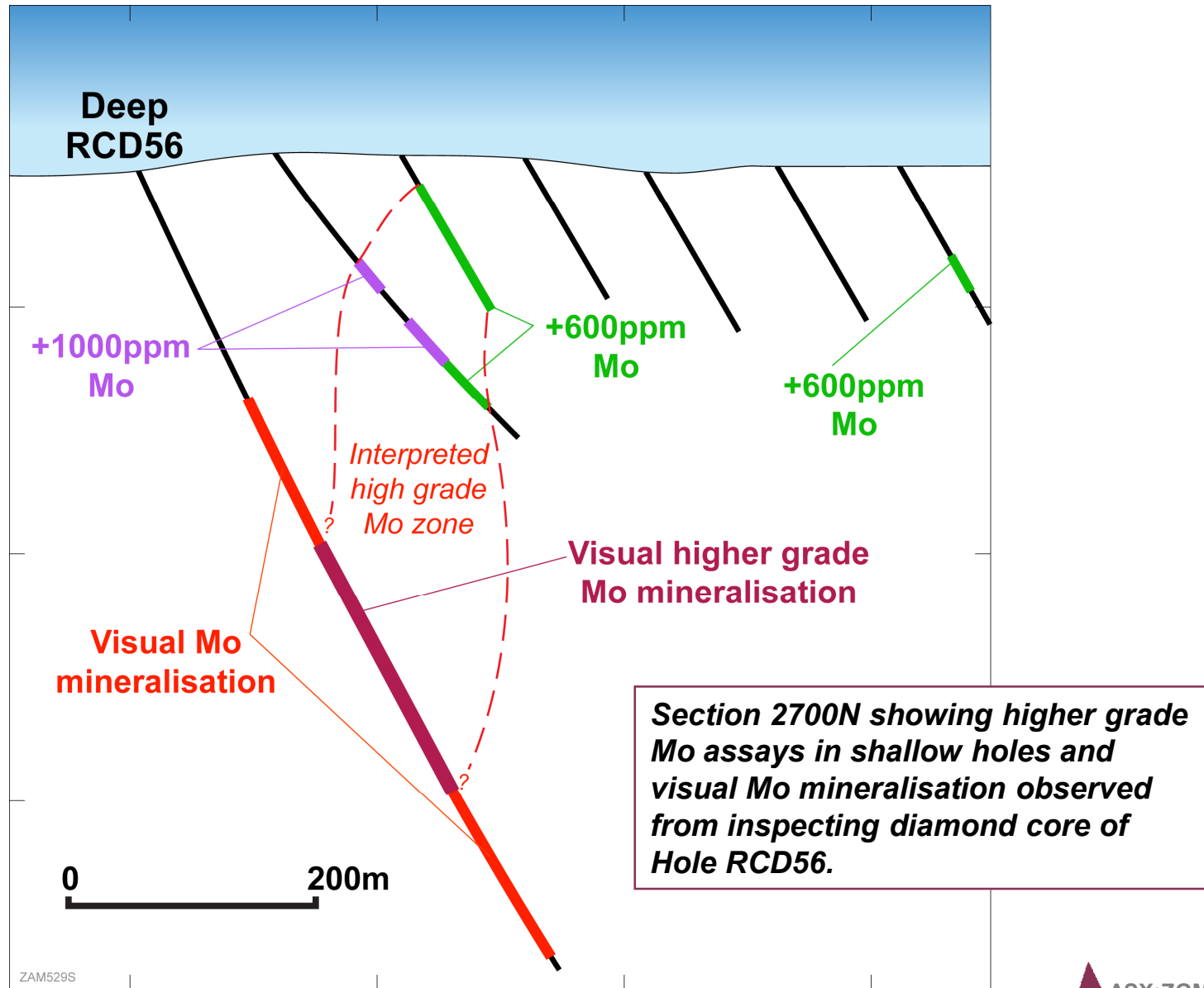
ZAM514S

ASX:ZGM



ZAMIA

Section 2700N



ZAM529S



ASX:ZGM



ZAMIA

Scoping Study - in Progress

- **Geological interpretation**
- **Resource drilling**
- **Metallurgical tests**
- **Preliminary mine planning**
- **Groundwater study**
- **Environmental study**
- **Infrastructure study**
- **Financial analysis**
- **Peer review**





ZAMIA

Results to Date

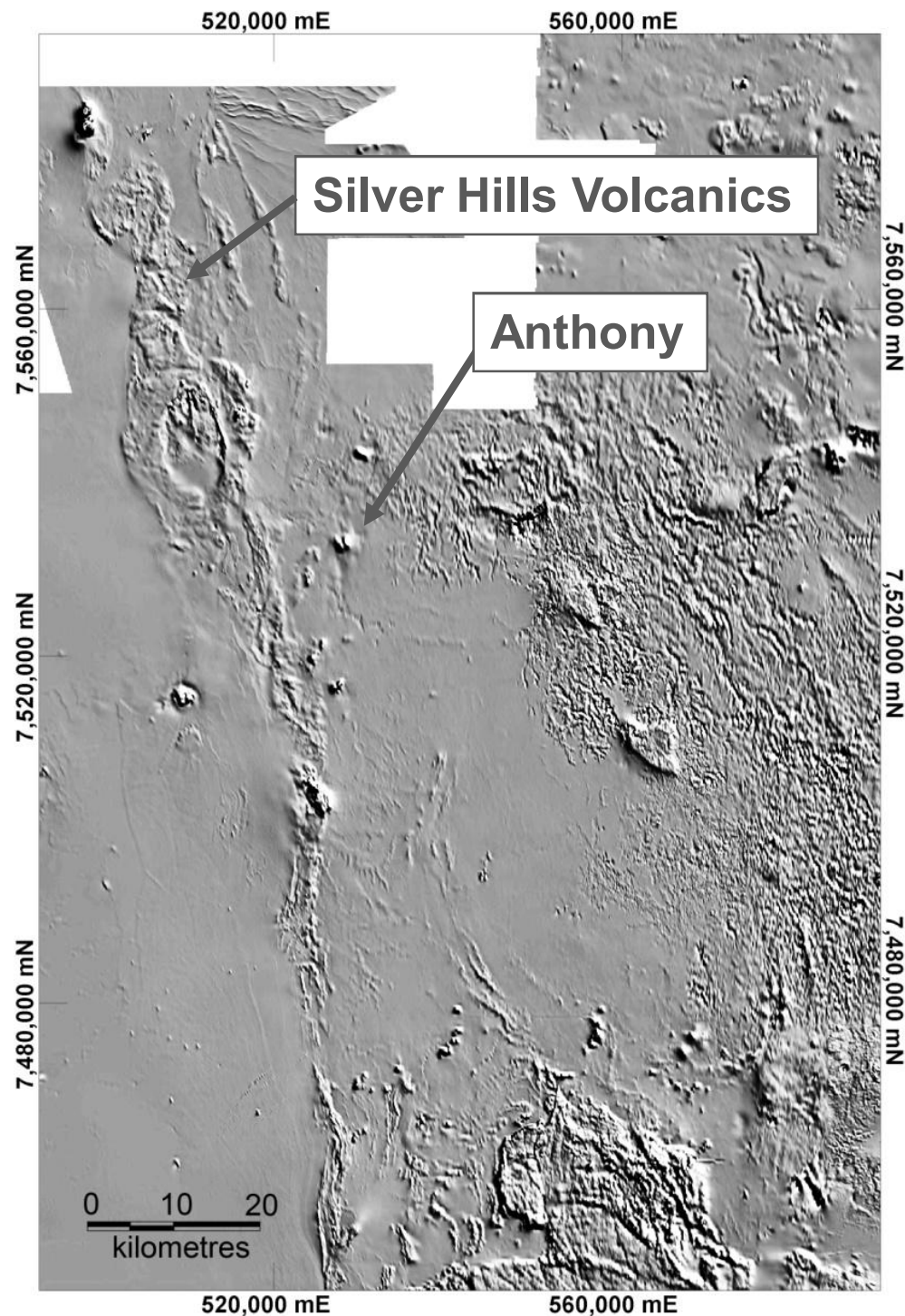
- **Resource - very good !**
- **Metallurgy on sulphide Mo - very good !**
- **Metallurgy on oxide Mo - in progress**
- **Deep drilling - looking good !**
- **Scoping study - also looking good !**

Next steps -

- **Peer review of scoping study**
- **Definitive feasibility study - 2011**



ASX:ZGM



Regional Discovery Potential

Magnetic imagery
highlights volcanics &
intrusive centres

→ Potential for
discovery of new
porphyry deposits



ZAMIA



Exploration Permits (EPMs)

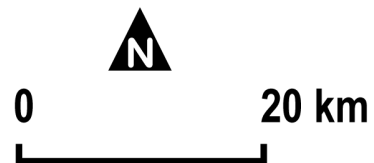


EPM Applications



Exploration Targets

**Anthony
Mo deposit**



22°00'

22°30'

147°00'

147°30'

Clermont

ZAM278S



ASX:ZGM



ZAMIA

Company Strategy

- ” **Determine extent of the Anthony deposit**
- ” **Upgrade resource estimation**
- ” **Advance the Anthony project towards feasibility**
- ” **Test other targets within the Clermont district**





ZAMIA

- In-ground value of Mo metal in resource:

A\$2,500 million

- Zamia's market capitalisation:

A\$15 million



ASX:ZGM



Zamia Metals Limited

Address: Level 8 / 275 George Street
Sydney NSW 2000 Australia

Telephone: +61 (2) 8223 3744

Email: info@zamia.com.au

Website: www.zamia.com.au