



Fast Facts

Cap Structure	Dec 09
Issued Shares	362Mil
Market Cap	A\$25.3Mil
Cash + Investments	\$4.4Mil

Directors

Hamish Bohannon	Chairman
Steve Norregaard	Managing Dir.
Joe Totaro	Non-Exec Dir.
Andrew Czerw	Executive Dir.
Tony Martin	Non-Exec Dir.

Company Highlights

- Substantial resource base
- Diversified commodities
- Aggressive exploration
- Proven management
- BFS well advanced



PRP Resource Base

- 12.66 Mt
- 850,000 oz gold
- 9.8 Moz silver
- 87,000t copper
- 123,000t lead
- 74,000t zinc

Contact Details

Head Office
Unit 46/328 Albany Hwy
VICTORIA PARK
WA 6100
T: +61 8 6250 4600
F: +61 8 6250 4699
E: info@tectonic.com.au

PHILLIPS RIVER PROJECT

HIGH GRADE DRILL RESULTS, MORE EXPLORATION DRILLING

Highlights

- High grade intercepts from Harbour View
 - 3.0m @ 29.2 g/t Au, 1.1% Cu
 - 5.4m @ 3.46 g/t Au, 0.3% Cu
 - 4.4m @ 4.41 g/t Au, 0.5% Cu
 - 2.55m @ 4.29 g/t Au, 0.4% Cu
 - 1.0m @ 9.66 g/t Au, 0.1% Cu
 - 1.0m @ 8.31 g/t Au, 2.3% Cu
- High grade intercept from May Series
 - 6.8m @ 12.97 g/t Au, 0.3% Cu
- High Grade intercepts from Flag
 - 2.0m @ 27.5 g/t Au, 1.4% Cu
 - 4.0m @ 5.55 g/t Au, 0.8% Cu
 - 3.0m @ 7.22 g/t Au, 0.2% Cu
 - 2.0m @ 7.91 g/t Au, 0.8% Cu
 - 1.0m @ 10.6 g/t Au, 0.5% Cu
- Enhanced exploration model / prospectivity on the Maybee structure – drilling to follow
- High grade intercepts on the Northern end of Harbour View prompts additional exploration drilling

The results represent diamond drilling intersections and the remaining outstanding RC drilling results not previously reported for Harbour View and Flag. A detailed table (See Table 1) is attached.

Managing Director Steve Norregaard commented “Momentum continues to build on the back of these high grade intercepts. The exciting aspect is that this demonstrates a multitude of areas remain open. These results greatly enhance our current understanding of the field with further drilling now planned to test the geological models. We are keen to push on.”

Harbour View

The holes drilled within the mineralised envelopes have confirmed the high grade nature of the mineralisation. Of particular note, are the results coming from KP778 (3.0m @ 29.2 g/t Au, 1.1% Cu) and KP774 (1m @ 4.28g/t Au). These holes are in an area that remains lightly drill tested (see Figure 1). The strength of the intersections highlights the potential to extend the known resource area to the north and at depth. Further drilling has now been planned.

Also of note is the location of the Maybee intersection which will be expanded upon below.

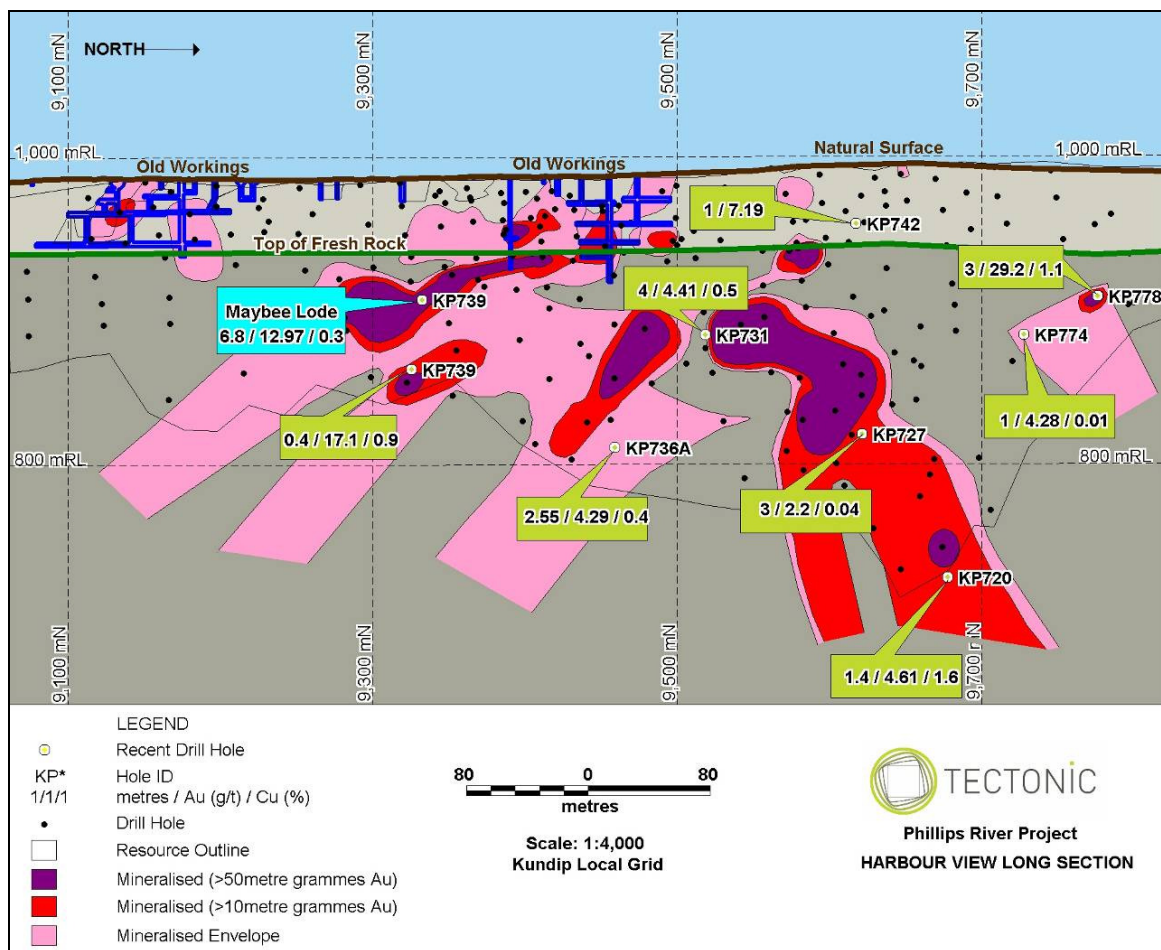


Figure 1: Harbour View long section. Note the most northern mineralised zone surrounding holes KP778 and KP774. This area remains open to the North and at depth and will be the subject of further drilling. The Maybee lode as shown was intersected in the hanging-wall of the Harbour View.

Maybe Lode

The Maybe Lode is the most southern mineralised surface of a set of structures collectively known as the May Series. The significance of the Maybe lode has been greatly enhanced by recent drilling which was targeting the Harbour View. The mineralised surface was intersected in the pre-collar of KP739, returning 6.8m @ 12.97 g/t Au, 0.3% Cu, and the previously reported KP738, 3m @ 7.3g/t Au (See Figures 1 & 2).

The exploration model has been expanded with projections of this surface now interacting with the Flag West prospect. Of particular interest is the 700 metres of prospective strike hosting a number of geophysical responses. Drilling has been planned with the drill rig on site and working.

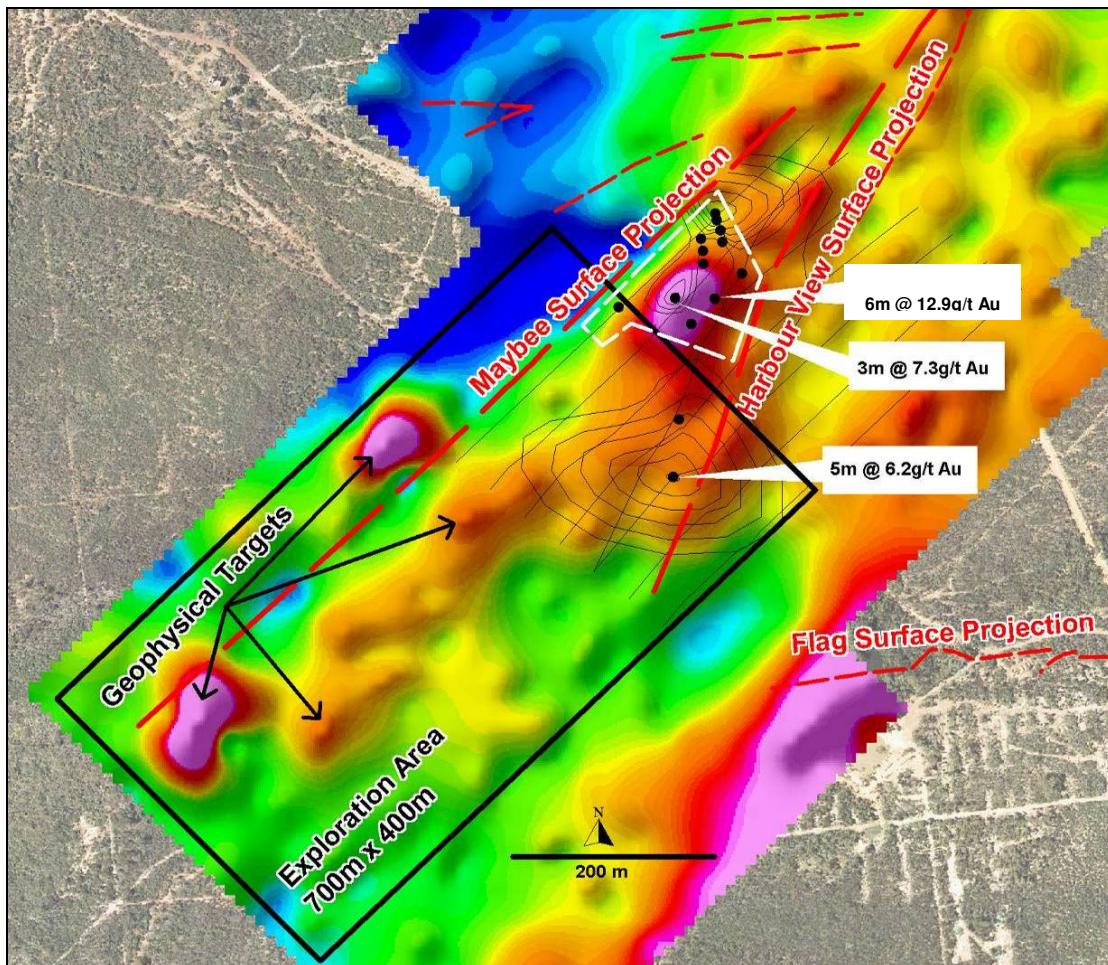


Figure 2: Plan view, the Maybe surface projection interacting with the Flag West exploration prospect. Note: Current Maybe resource boundary shown as a white dashed line. Apply dip correction factor for drill intercepts to calculate true width ($\text{Drill width} \times 0.70 = \text{True Width}$).

Flag

The holes drilled within the mineralised envelopes have largely confirmed the high grade nature of the mineralisation. A series of holes were drilled to define the keel position of the main plunging high grade shoot (See Figure 3). These holes successfully achieved the desired outcome. Two holes were drilled (KP807 & KP808) below the Try Again mineralised zone. They have both successfully intersected significant mineralisation, further enhancing the prospectivity of this area.

Drill planning is currently under consideration.

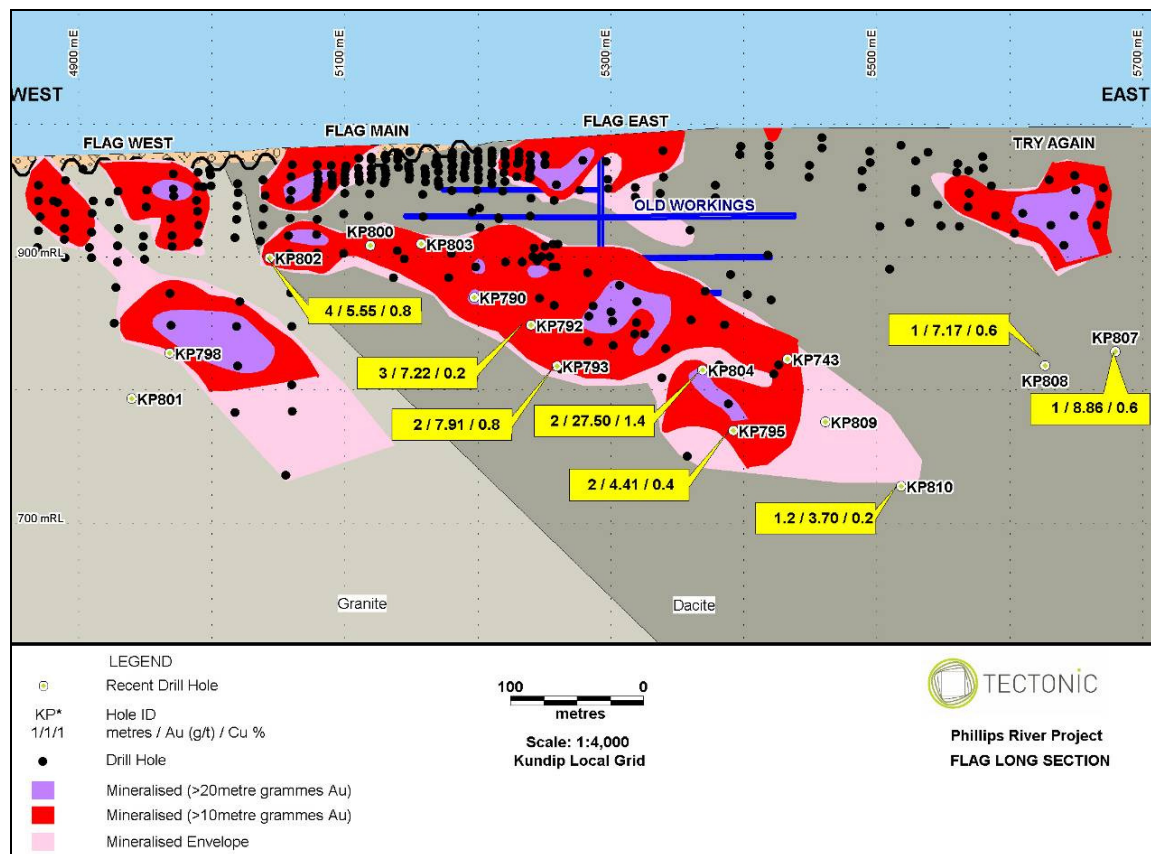


Figure 3: Flag long section. Note holes identifying the keel position of the main plunging shoot. In addition holes KP807 & KP808 have added to the prospectivity of the Try Again mineralised zone.

The Exploration Effort

Currently the company has a RAB rig drilling at Kundip targeting the Kaolin East and the Flag West / Maybee prospects.

The Kaolin East prospect is an area currently untested by drilling. This area is prospective for Kaolin lode strike extensions along with strike extensions to the Harbour View structure. The Flag West / Maybee area is prospective for strike extensions to the Maybee lode, an off-set Harbour View and potentially the Flag lode.

The Harbour View North area is prospective for immediate resource extensions to the Harbour View. A larger RC rig will be on site within 2-3 weeks to drill the Harbour View North and some deeper target areas on the Maybee structure, along with other follow-up work.

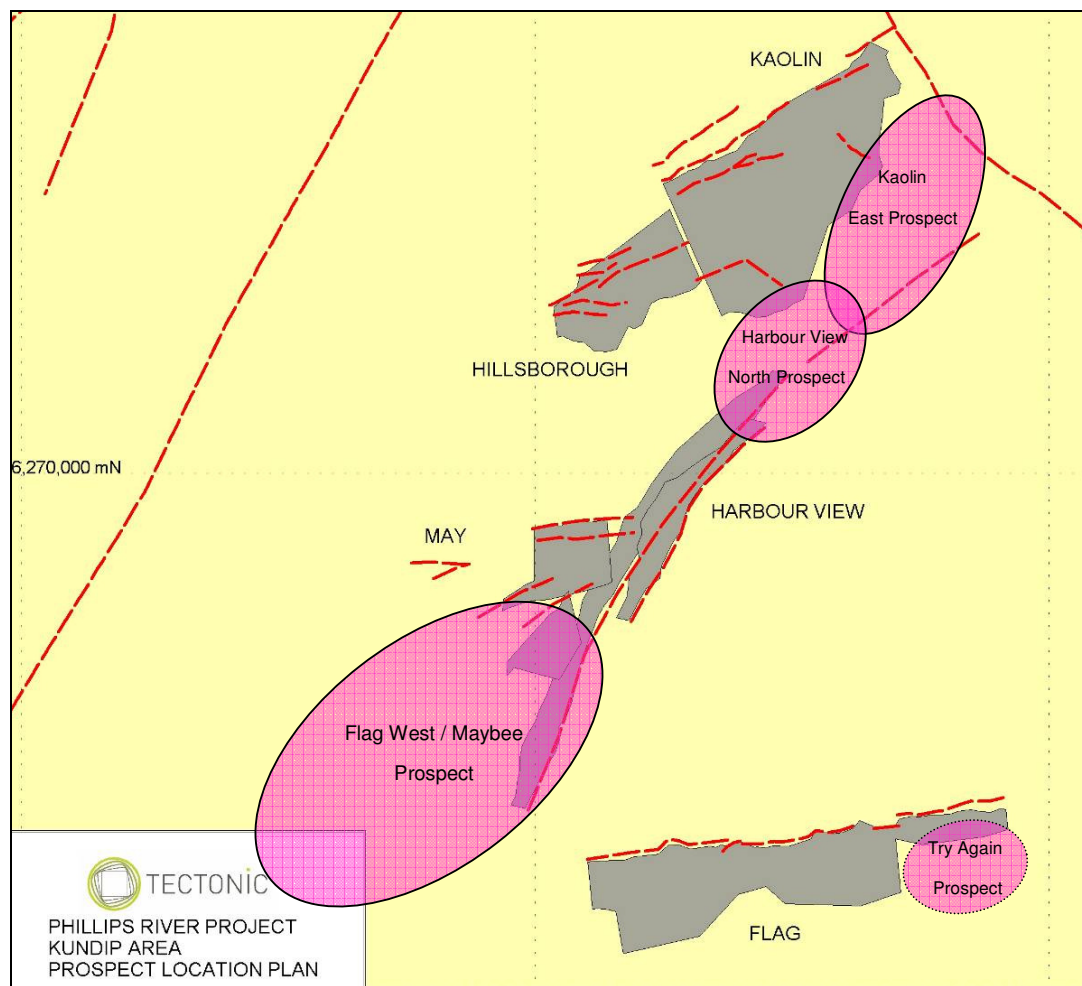


Figure 4: Location plan for prospects that are the subject of the immediate exploration effort at Kundip.

SIGNIFICANT RC DRILL RESULTS (>1g/t Au)										
Hole ID	Depth From (m)	Depth To (m)	Interval (m)	Au (g/t)	Cu (%)	Local N (m)	Local E (m)	Local Azi (degrees)	Dip (degrees)	Comments
DD09KP742	40.0	41.0	1.0	7.19		9,624	5,054	110	-61	HV
DD09KP742	28.0	29.0	1.0	2.46						HV
DD10KP720	297.6	299.0	1.4	4.61	1.6	9,722	4,933	109	-60	HV
DD10KP720	45.0	46.0	1.0	2.85	0.1					HV
DD10KP725	30.0	31.0	1.0	9.66	0.1	9,668	5,020	107	-57	HV
DD10KP727	195.0	198.0	3.0	2.20	0.0	9,661	4,955	144	-60	HV
DD10KP727	201.0	204.0	3.0	1.54	0.0					HV
DD10KP727	18.0	22.0	4.0	1.13	0.0					HV
DD10KP727	230.0	232.0	2.0	2.07	0.2					HV
DD10KP731	108.6	114.0	5.5	3.46	0.3	9,546	4,981	112	-52	HV
DD10KP731	123.0	127.0	4.0	4.41	0.5					HV
DD10KP731	104.0	107.0	3.0	1.88	0.4					HV
DD10KP731	133.6	134.8	1.2	3.23	0.6					HV
DD10KP731	119.0	121.0	2.0	1.15	0.1					HV
DD10KP736A	207.0	209.6	2.6	4.29	0.4	9,499	4,827	110	-60	HV
DD10KP736A	200.4	201.2	0.8	2.72	0.5					HV
DD10KP739	78.1	84.9	6.8	12.97	0.3	9,345	4,810	114	-68	Maybee
DD10KP739	125.1	126.1	1.0	8.31	2.3					HV
DD10KP739	130.7	131.0	0.4	17.10	0.9					HV
DD10KP787	47.8	50.3	2.5	0.97	1.1	8,960	4,914	179	-57	FLAG
DD10KP804	199.5	201.5	2.1	27.47	1.4	8,755	5,364	11	-61	FLAG
DD10KP804	109.0	110.0	1.0	6.67	0.1					FLAG
DD10KP810	295.4	296.6	1.2	3.70	0.2	8,672	5,462	32	-61	FLAG
DD10KP810	233.0	234.0	1.0	2.17	0.0					FLAG
RC10KP801	203.0	204.0	1.0	1.17	0.2	8,638	4,945	359	-61	FLAG
RC10KP774	133.0	134.0	1.0	4.28	0.0	9,756	5,137	112	-56	HV
RC10KP774	136.0	137.0	1.0	2.48	0.0					HV
RC10KP774	118.0	119.0	1.0	2.35	0.0					HV
RC10KP774	131.0	132.0	1.0	1.35	0.0					HV
RC10KP778	93.0	96.0	3.0	29.18	1.1	9,791	5,197	109	-60	HV
RC10KP790	144.0	146.0	2.0	1.24	0.5	8,799	5,200	358	-60	FLAG
RC10KP790	139.0	141.0	2.0	1.12	0.1					FLAG
RC10KP792	161.0	164.0	3.0	7.22	0.2	8,780	5,239	1	-61	FLAG
RC10KP792	127.0	128.0	1.0	10.60	0.5					FLAG
RC10KP793	174.0	176.0	2.0	7.92	0.9	8,762	5,260	1	-61	FLAG
RC10KP795	251.0	253.0	2.0	4.41	0.4	8,692	5,394	1	-61	FLAG
RC10KP802	87.0	91.0	4.0	5.55	0.8	8,805	5,042	1	-60	FLAG
RC10KP807	188.0	189.0	1.0	8.86	0.6	8,777	5,697	6	-60	FLAG
RC10KP808	193.0	194.0	1.0	7.17	0.6	8,778	5,638	4	-61	FLAG
RC10KP810	233.0	234.0	1.0	2.17	0.0	8,734	5,472	1	-61	FLAG

Table 1: Details of drill holes with significant intersections.



For further information please contact:

Steve Norregaard
 Managing Director
 (08) 6250 4600
steve.norregaard@tectonic.com.au

-ENDS-

Competent Person's Statement

The information in this report that relates to Exploration Results and Mineral Resources is based on information compiled by Mr Bruce Armstrong who is a Member of the Australasian Institute of Geoscientists. Mr Armstrong is a full time employee of Tectonic, and has sufficient experience which is relevant to the style of mineralisation under consideration to qualify as a Competent Person as defined in the 2004 edition of the JORC Code. Mr Armstrong has given his consent to the inclusion in the report of the matters based on the information in the form and context in which it appears. "This release may contain forward-looking statements. Forward-looking statements address future events and conditions and therefore involve inherent risks and uncertainties. Actual results may differ materially from those currently anticipated in such statements."

TECTONIC RESOURCES GLOBAL RESOURCE TABLE: APRIL 2010						
GOLD AND COPPER RESOURCE TABLE: KUNDIP PROJECT AND OTHERS**						
CATEGORY	Mt	Au (g/t)	Ag (g/t)	Cu (%)	Pb (%)	Zn (%)
MEASURED	0.00	0.0	0.0	0.0		
INDICATED	4.44	3.3	2.2	0.3		
INFERRED	1.98	3.3	2.0	0.4		
SUB TOTAL	6.42	3.3	2.2	0.3		
BASE METAL RESOURCE TABLE: TRILOGY PROJECT***						
MEASURED	0.31	2.4	41	0.3	0.1	0.0
INDICATED	5.75	0.7	48	1.1	2.1	1.3
INFERRED	0.18	0.6	12	0.8	0.2	0.2
SUB TOTAL	6.24	0.8	47	1.0	2.0	1.2
GLOBAL RESOURCE TABLE: GRADE						
MEASURED	0.31	2.4	41.2	0.3	0.1	0.0
INDICATED	10.18	1.9	28.0	0.8	1.2	0.7
INFERRED	2.17	3.0	2.9	0.4	0.0	0.0
GRAND TOTAL	12.66	2.1	24.0	0.7	1.0	0.6
GLOBAL RESOURCE TABLE: CONTAINED METAL						
	Mt	M Oz	M Oz	t (000)	t (000)	t (000)
MEASURED	0.31	0.02	0.41	0.9	0.4	0.0
INDICATED	10.18	0.61	9.18	77.7	122.5	73.9
INFERRED	2.17	0.21	0.20	8.4	0.3	0.3
GRAND TOTAL	12.66	0.85	9.8	87.1	123.3	74.3

Table 2- Phillips River Global Resource Estimate

*- Based on wire-framing to drill holes on a 0.8g/t Au cut-off, and reporting to a 1g/t Au cut-off

**- Various based on wire-framing to drill holes, and reporting on a 1g/t or 1g/t Au equivalent cut-off based on:
 $Au\ eq = Au\ ppm + (Cu\ ppm * 0.0001420827408)$

***-Based on wire-framing to drill holes on a 0.5% Cu equivalent cut-off and reporting to a 1% Cu equivalent cut-off.
 $Oxide\ Cu\ eq. = (Au\ ppm * 9775) + (Ag\ ppm * 150.4) + (Cu\ ppm)$



*Sulphide Cu eq. = (Au ppm * 4720) + (Ag ppm * 75.5) + (Cu ppm) + (Pb ppm * 0.2384) + (Zn ppm * 0.1925)*

About Tectonic

Tectonic Resources NL ("Tectonic") has established a singular focus on the Phillips River Project and is well underway with the implementation of its strategy to advance the project to Bankable Feasibility Status. Situated on the south coast of Western Australia, between Hopetoun and Ravensthorpe, the project includes two established resource areas that lie in close proximity to each other. Both are the subject of ongoing work programmes.

Trilogy

The Trilogy deposit is a shallow bulk tonnage poly-metallic resource of 6.2Mt at 0.8g/t Au, 47g/t Ag, 1.0% Cu, 2.0% Pb and 1.2% Zn. The deposit lies on freehold farming land owned by the company.

Current Activities:

- Metallurgical testwork is completed confirming concentrate specification and recoveries
- Review of regional exploration targets is ongoing with geochemical soil sampling targeting broadly defined copper gold anomalism
- Drilling of the Railway Geochemical anomaly has just been completed with assay results pending

Kundip

Kundip is a historic mining centre with mineralisation hosted within quartz shear structures. The currently defined resources are contained within a 3km by 1km area. Exploration is ongoing outside of the resource area. A total resource of 6.42Mt at 3.3g/t Au and 0.3% Cu has been defined. Current work programmes are aimed at increasing the resource base and increasing confidence in known resources.

Current Activities:

- Regional Geochemical sampling and mapping is being progressed to gain greater understanding into the area
- Toll milling of gold ore stockpiled on surface during past mining episodes
- Drilling – exploration drilling at Kaolin East and Harbour View/Maybee/Flag West

Feasibility Study

The company appointed GR Engineering as study manager to oversee all aspects of the Feasibility study including detailed engineering of the processing facility. The study is destined for completion by mid 2010.