



Carrick Gold Limited and
Controlled Entities

.... from Exploration toward Development

Annual General Meeting

Monday 22 November 2010



Moving from Exploration toward Development

Who is Carrick Gold Limited?

- A Gold exploration Company moving toward development
- Holds over 450 sq km of tenements within 50 – 90 km of the world-renowned gold-mining centre at Kalgoorlie
- Three Gold deposits have been discovered at Lindsay's, Kalpini and Kurnalpi
- Focus is on bringing Lindsay's into production during 2011
- Well funded with +\$21m at bank

Corporate Information

Capital Structure:

- Shares on Issue – 139,000,000
- Options on Issue – 7,500,000

Market Capitalisation:

- On Issue – A\$69.5m
- Diluted – A\$73.25m

Major Shareholders:

- Susan Carr – 37.5%
- Link 405 – 12.4%
- JP Morgan Nominees – 8.7%

ASX Code:

- CRK

ADR (US) Code:

- CKGDY

Board of Directors:

- Laurence Freedman AM
 - *Chairman*
 - *Appointed August 2010*
- Dr Brian Martin
 - *Non Executive Director*
 - *Appointed May 2002*
- Robert Schuitema
 - *Non Executive Director*
 - *Appointed September 2010*
- Ross Gillon
 - *Non Executive Director*
 - *Appointed May 2010*

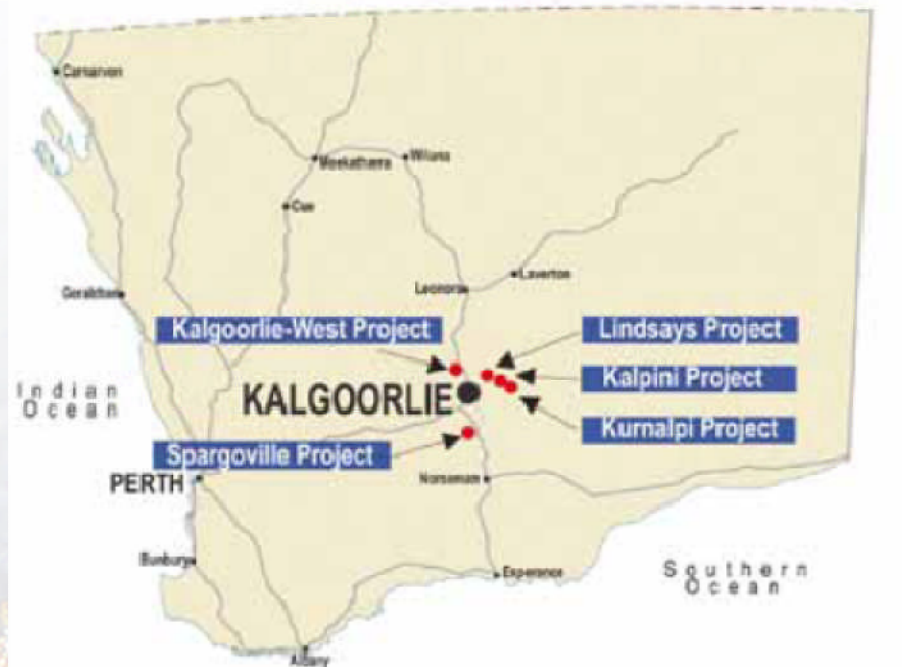
Where are the Projects Located

Carrick Gold Limited

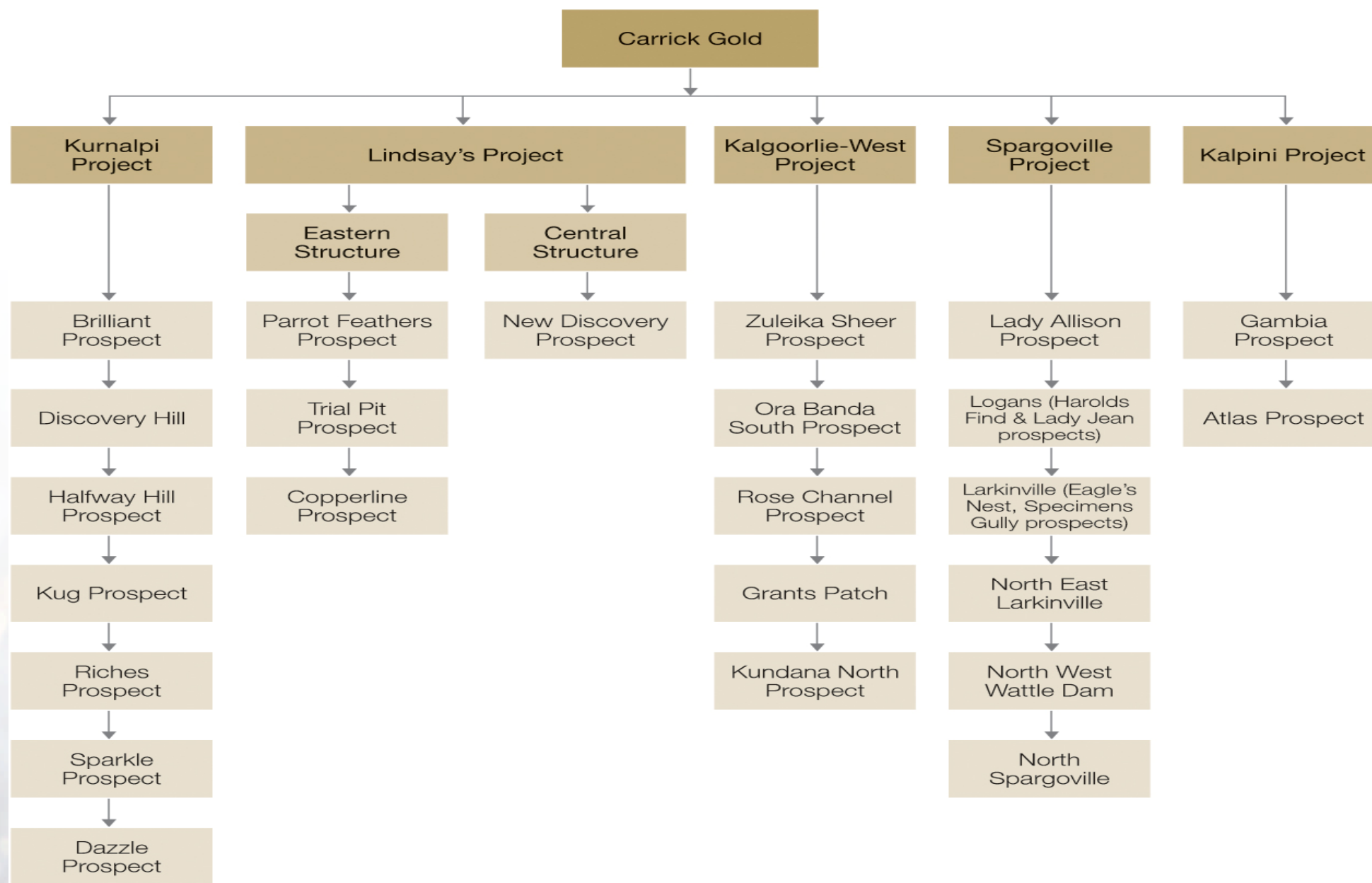
Project Location

Index Map

0 250 500km
scale



Carrick Gold Projects List



Mineral Resource Statement

	Tonnes	Grade (g/t Au)	Ounces
Lindsay's			
Central Structure			
Indicated	1,372,191	1.6	70,358
Inferred	1,000,627	1.6	51,324
Total	2,372,818	1.6	121,682
Eastern Structure			
Measured	382,470	3.4	41,679
Indicated	8,420,838	2.4	647,756
Inferred	21,725,778	3.2	2,228,284
Total	30,529,086	3	2,917,721
Kalpini			
Indicated	2,700,000	2.8	242,000
Total	2,700,000	2.8	242,000
Kurnalpi			
Brilliant Project			
Indicated	2,500,000	2.1	168,000
Inferred	10,300,000	2	645,800
Total	12,800,000	2	813,800
Kurnalpi			
Halfway Hill			
Indicated	671,320	1.9	40,722
Inferred	1,048,481	1.6	53,009
Total	1,719,801	1.7	93,731
Total Resource	50,100,000	2.6	4,190,000

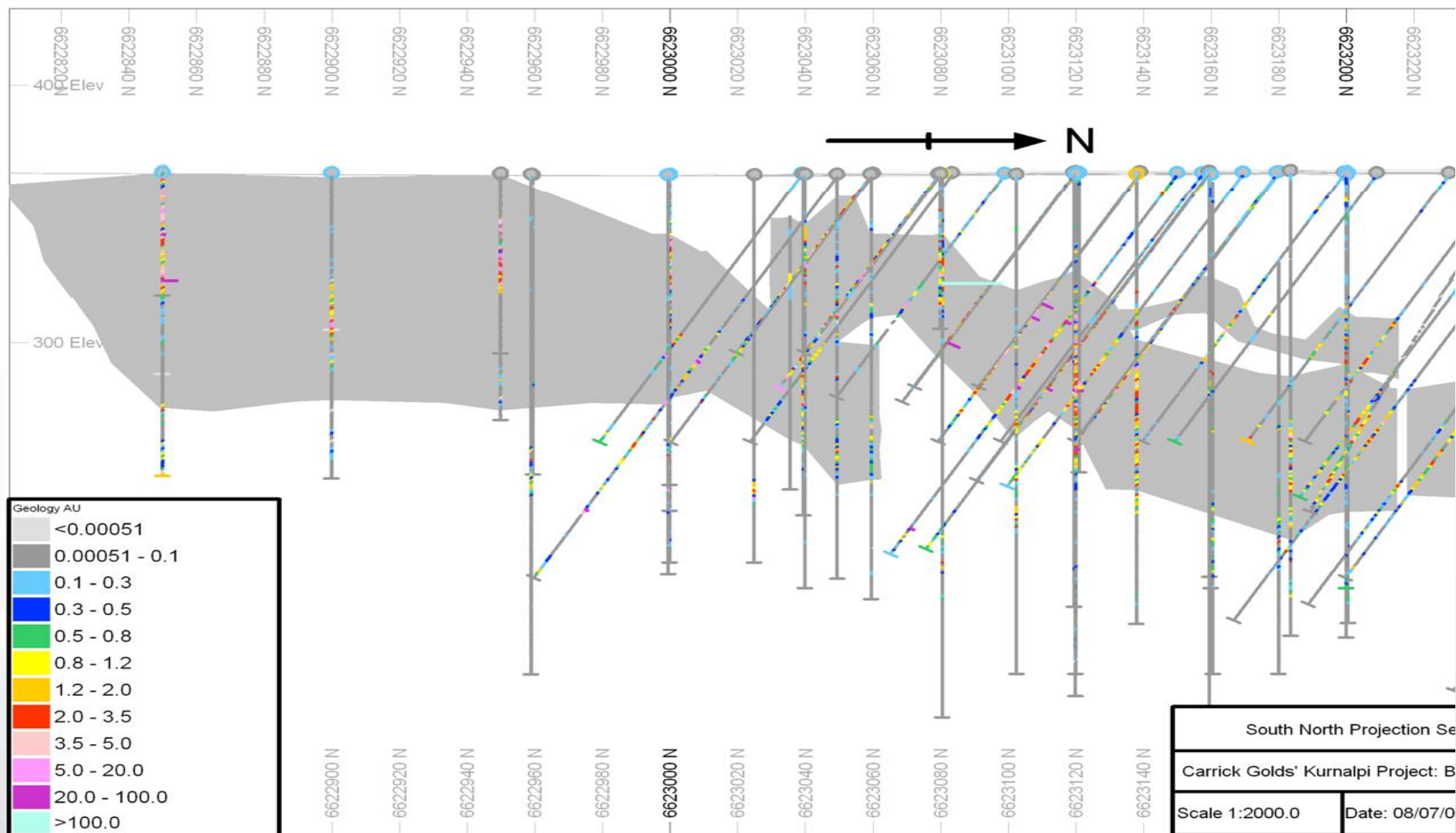
NOTE: grade rounded down

Kurnalpi Project

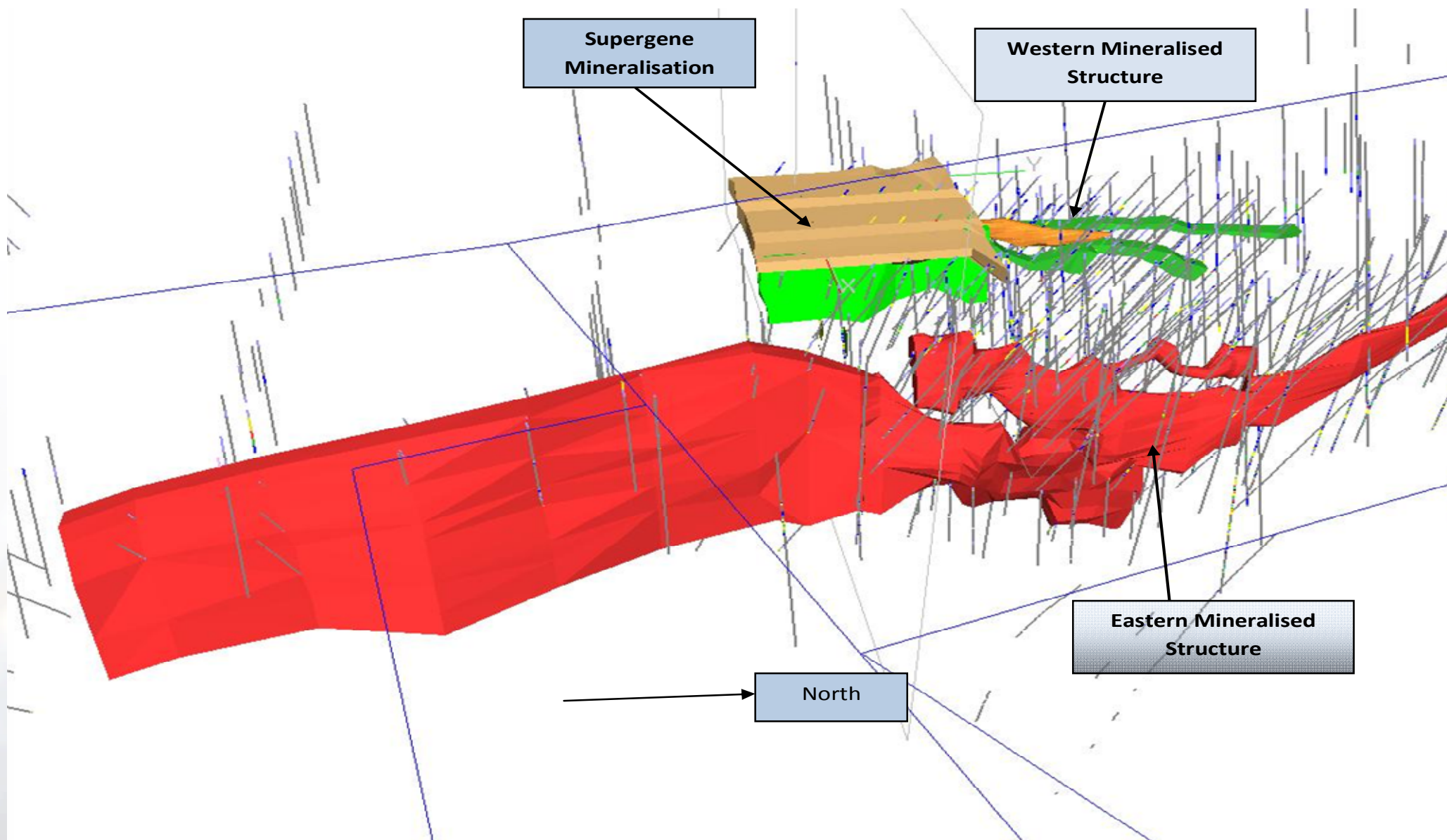
- Located 90 km from Kalgoorlie
- Shallow gold deposits identified
- Should be amenable to open pit mining
- Continue exploration and increase mineral resource
- Likely to be second mine developed after Lindsay's Project



Kurnalpi – Brilliant Prospect



Kurnalpi – Brilliant Prospect



Kurnalpi – Brilliant Prospect

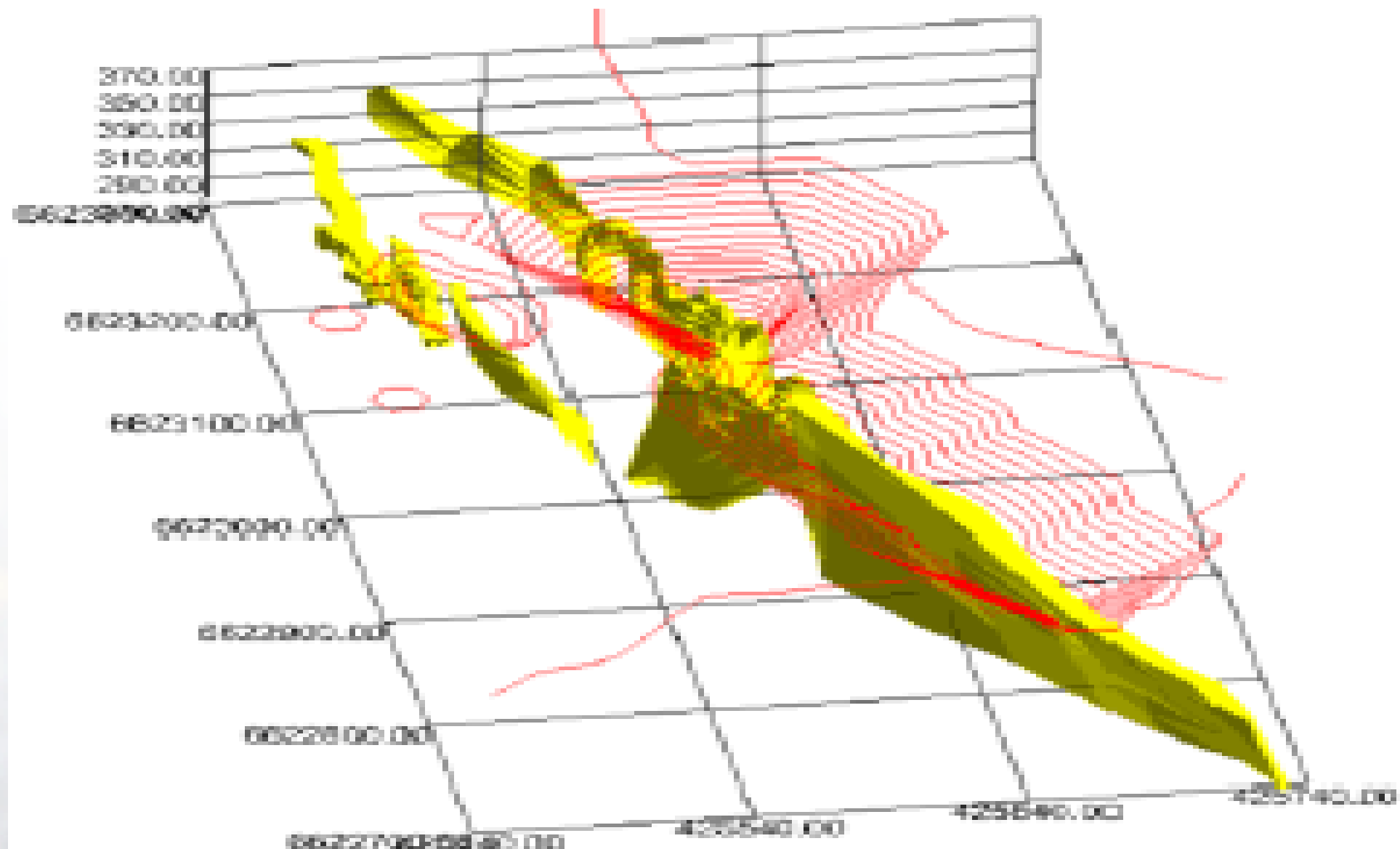
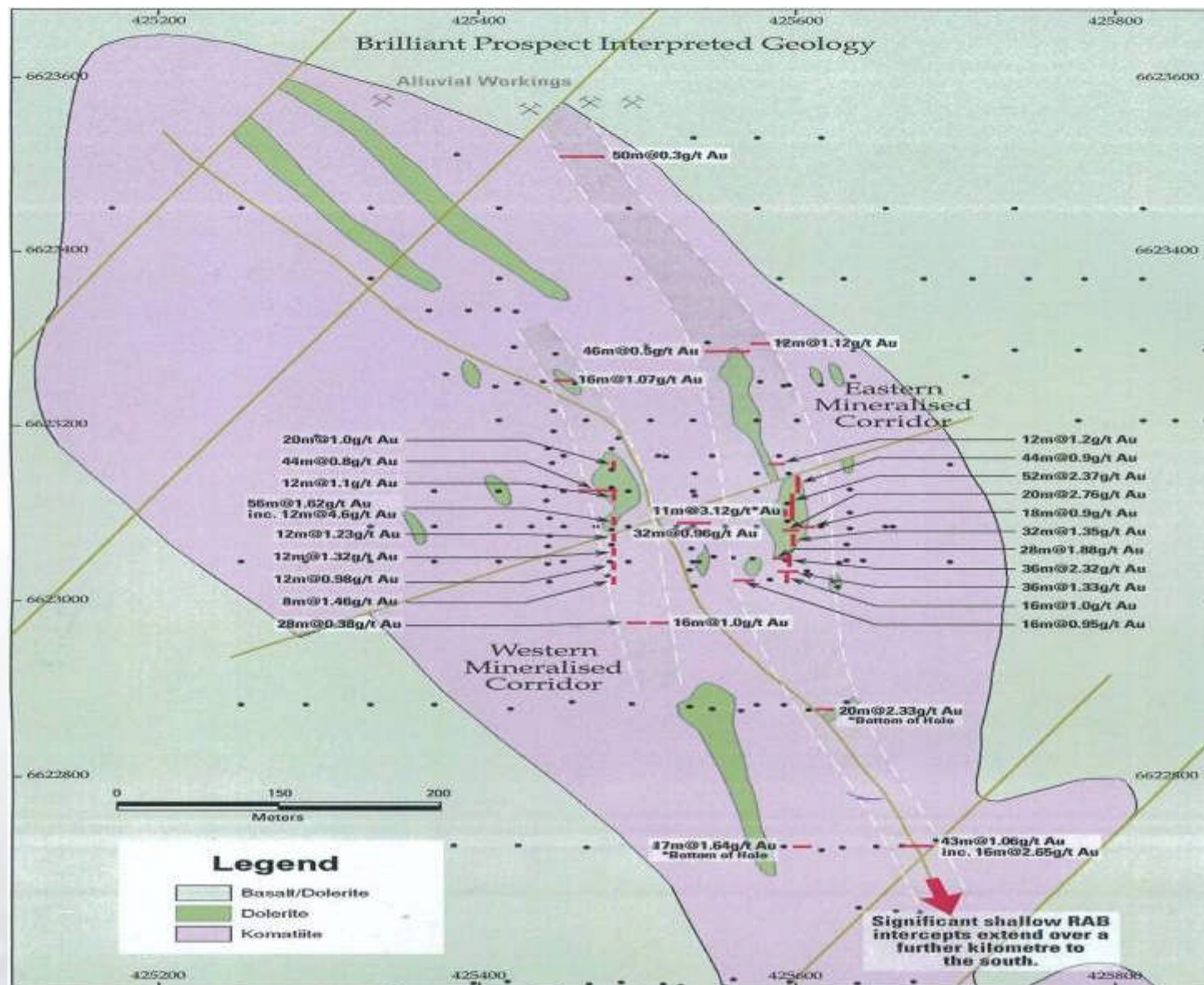


Figure: 3D View of Pitt Outlines and Ore Zone (looking North)

Kurnalpi – Brilliant Prospect

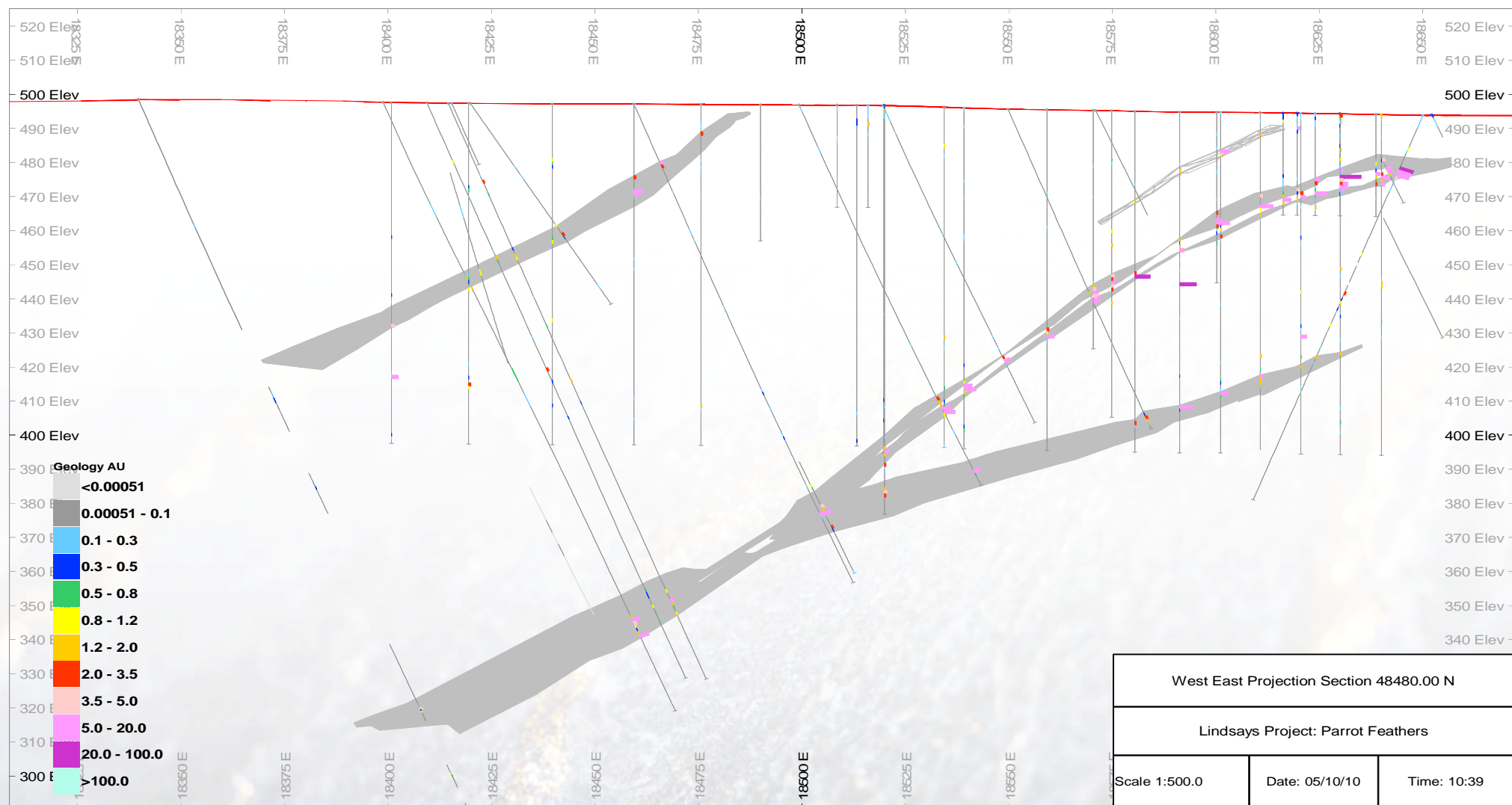


Lindsay's Project

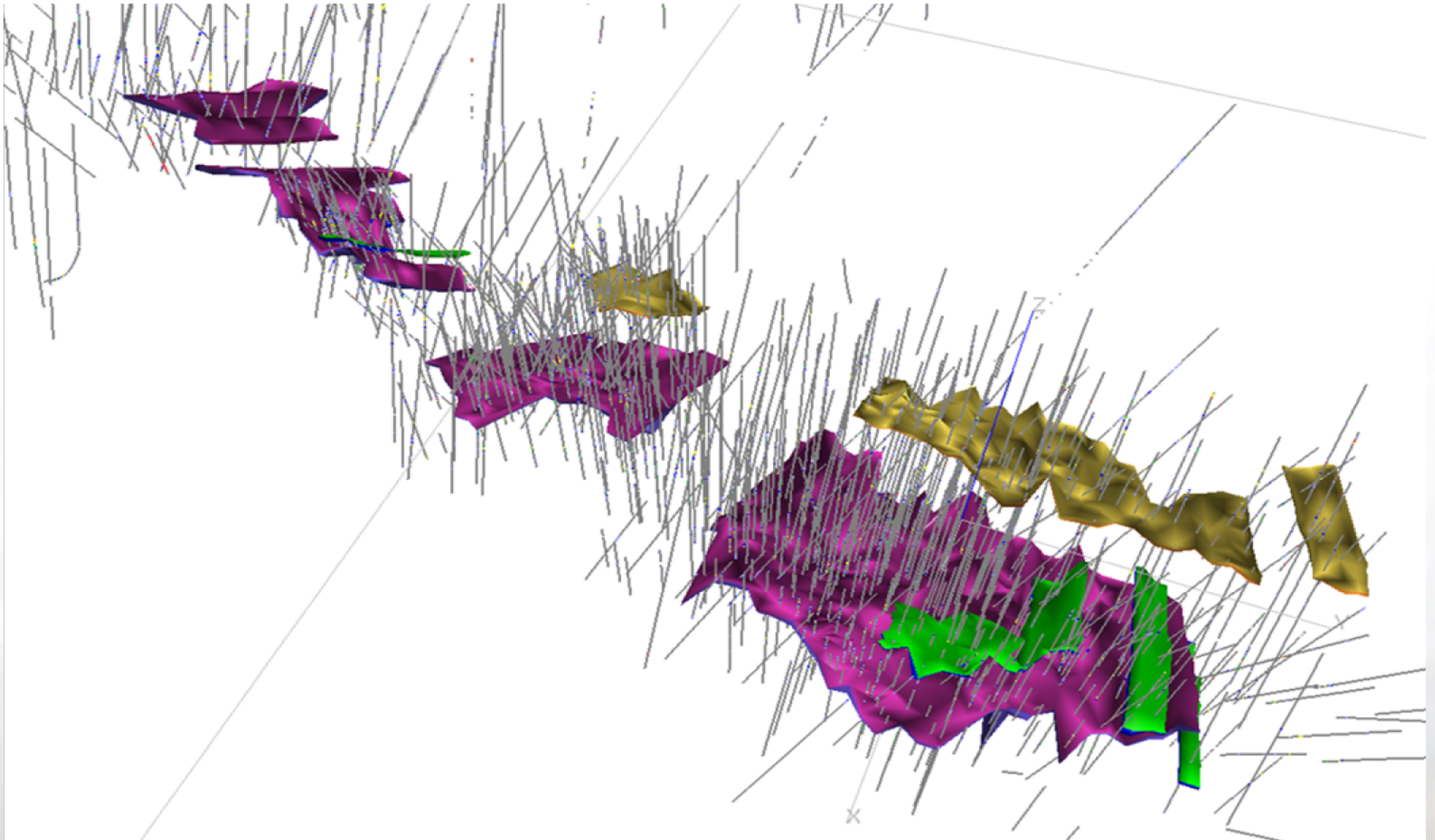
- Located approximately 50 km north east of Kalgoorlie
- Well-established gold region
- Most advanced project and first proposed to be mined
- Prospective as long-term, open pit mining operation
- Certified JORC resources



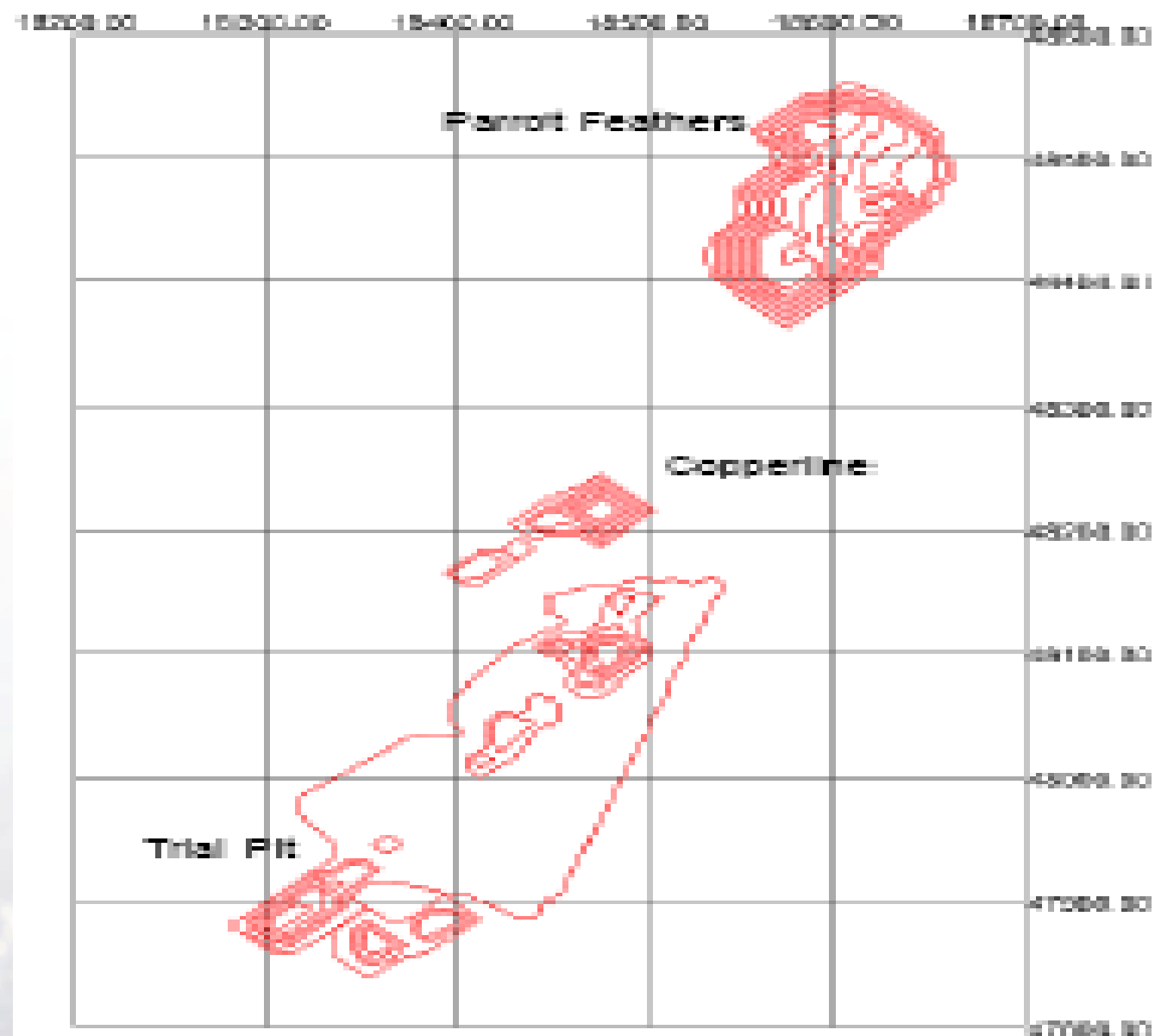
Lindsay's Project



Lindsay's Project



Lindsay's Project



Lindsay's Project

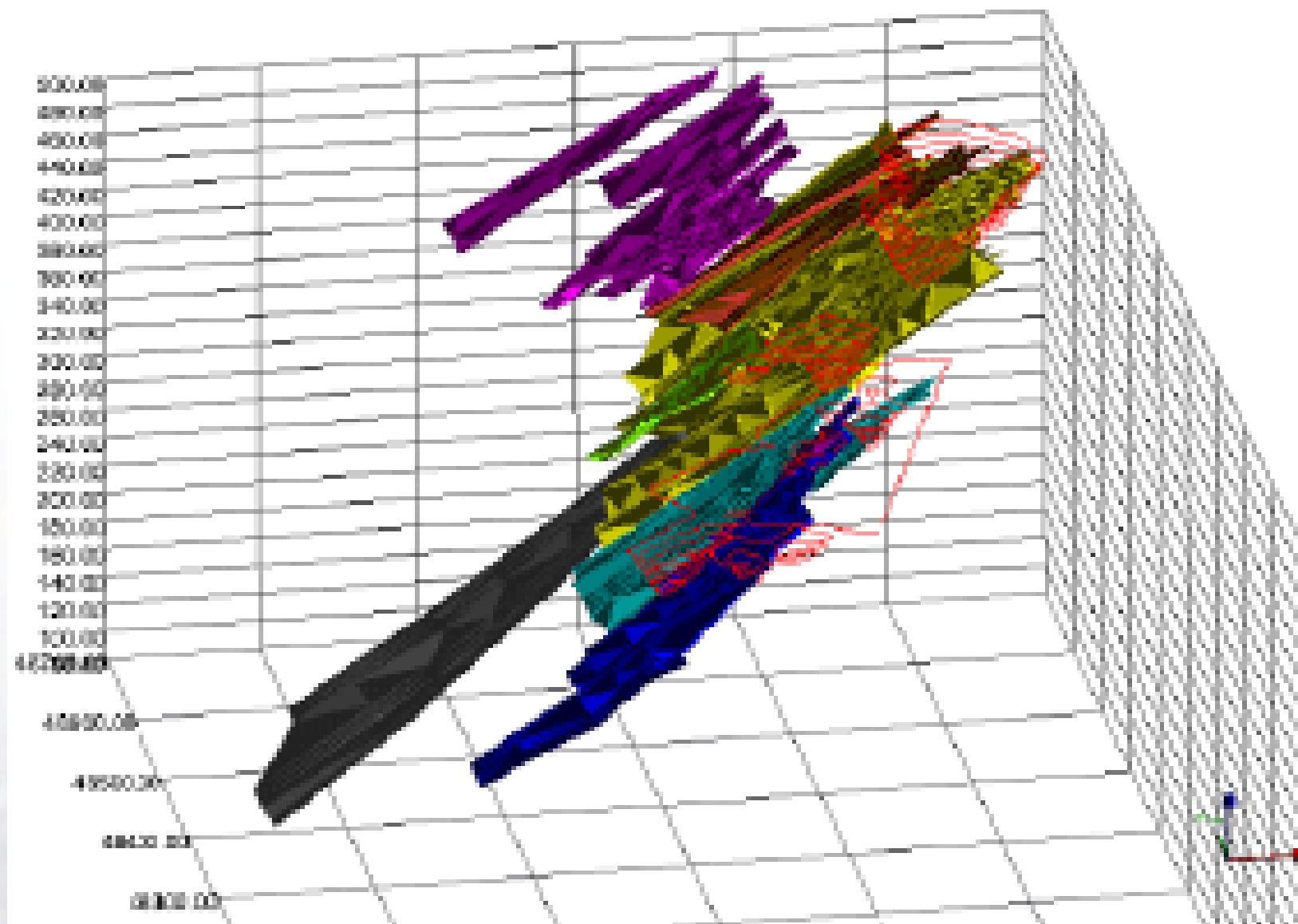


Figure: 3D view of Pitt Outlines and Ore Zone Wireframes (looking North)

Lindsay's Project

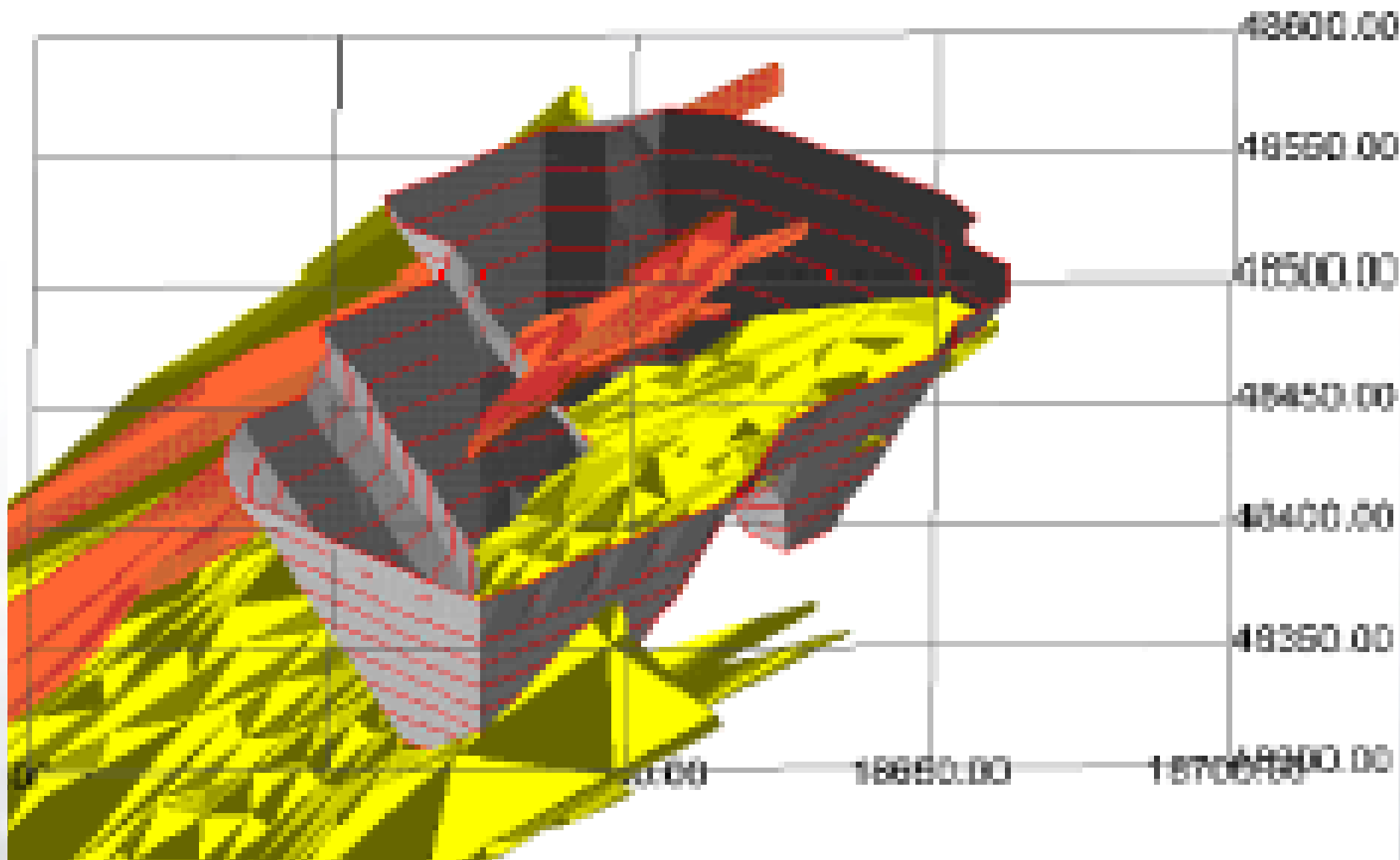
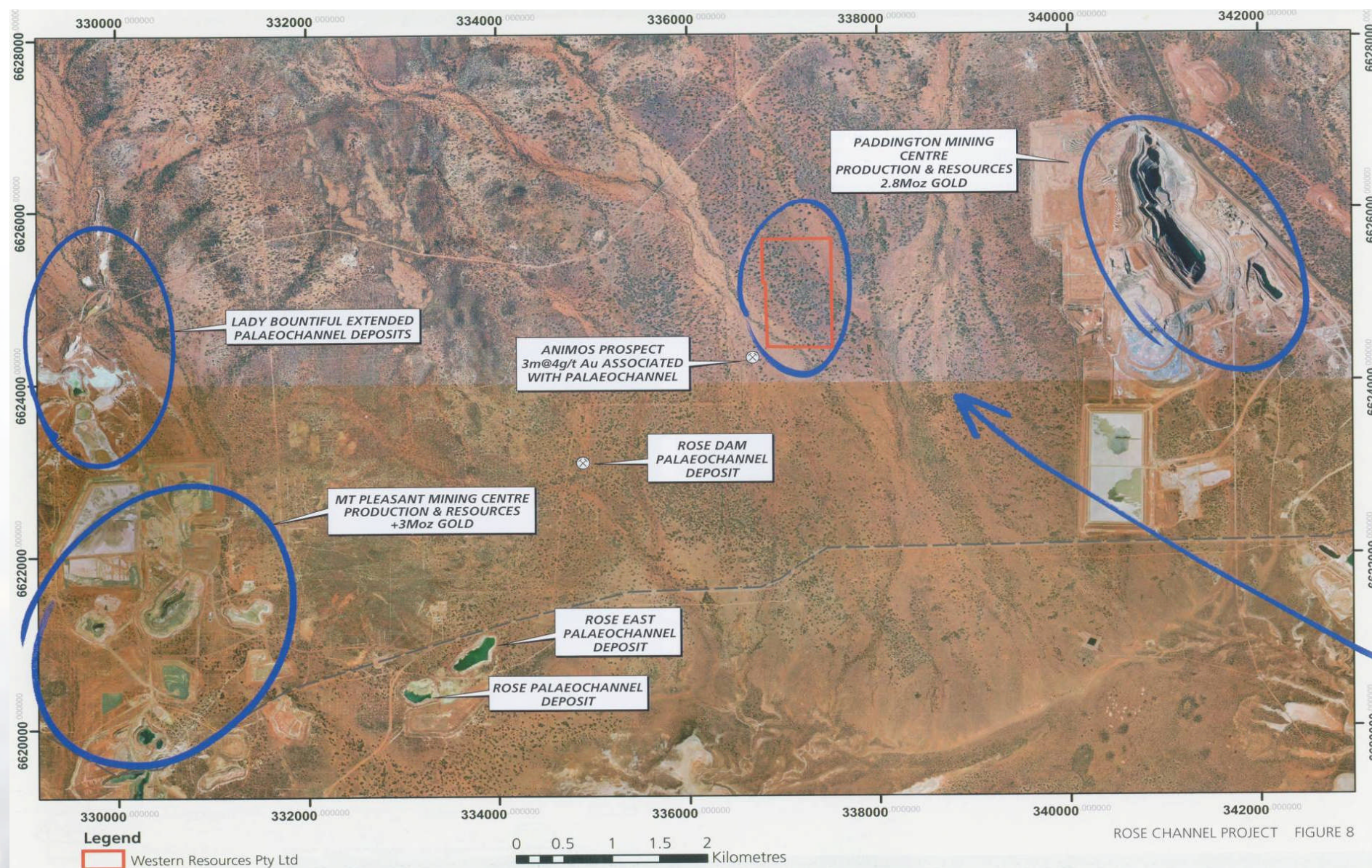


Figure: 3D View of Parrot Feathers Pit and Footwall Ore Zones (looking North)

Kalgoorlie-West Project

- Acquired early 2009
- Five prospects covering approximately 90 km²
- Covers under-explored areas within established gold producing district
- Advanced target areas outlined
- Two high priority areas identified

Kalgoorlie-West Project Area



Spargoville Project

- 16 tenements covering approximately 55 sq km
- Covers under-explored areas within well-endowed gold districts

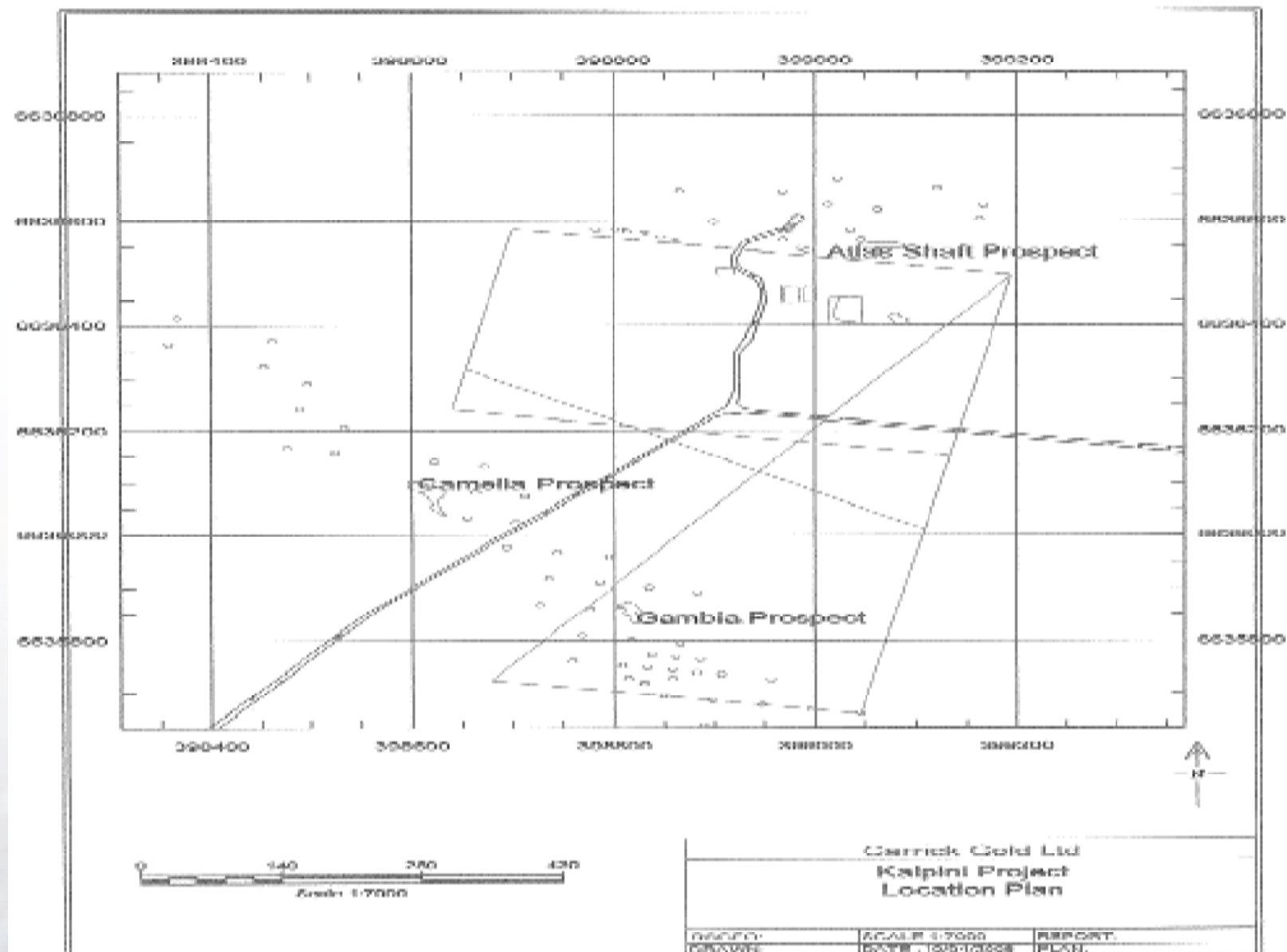


Kalpini Project

- Located between Lindsay's and Kurnalpi Projects
- Potential to be developed as satellite deposit
- Mill feed to nearby projects
- Identified JORC resource



Kalpini Project Area



Kalpini – Gambia Prospect

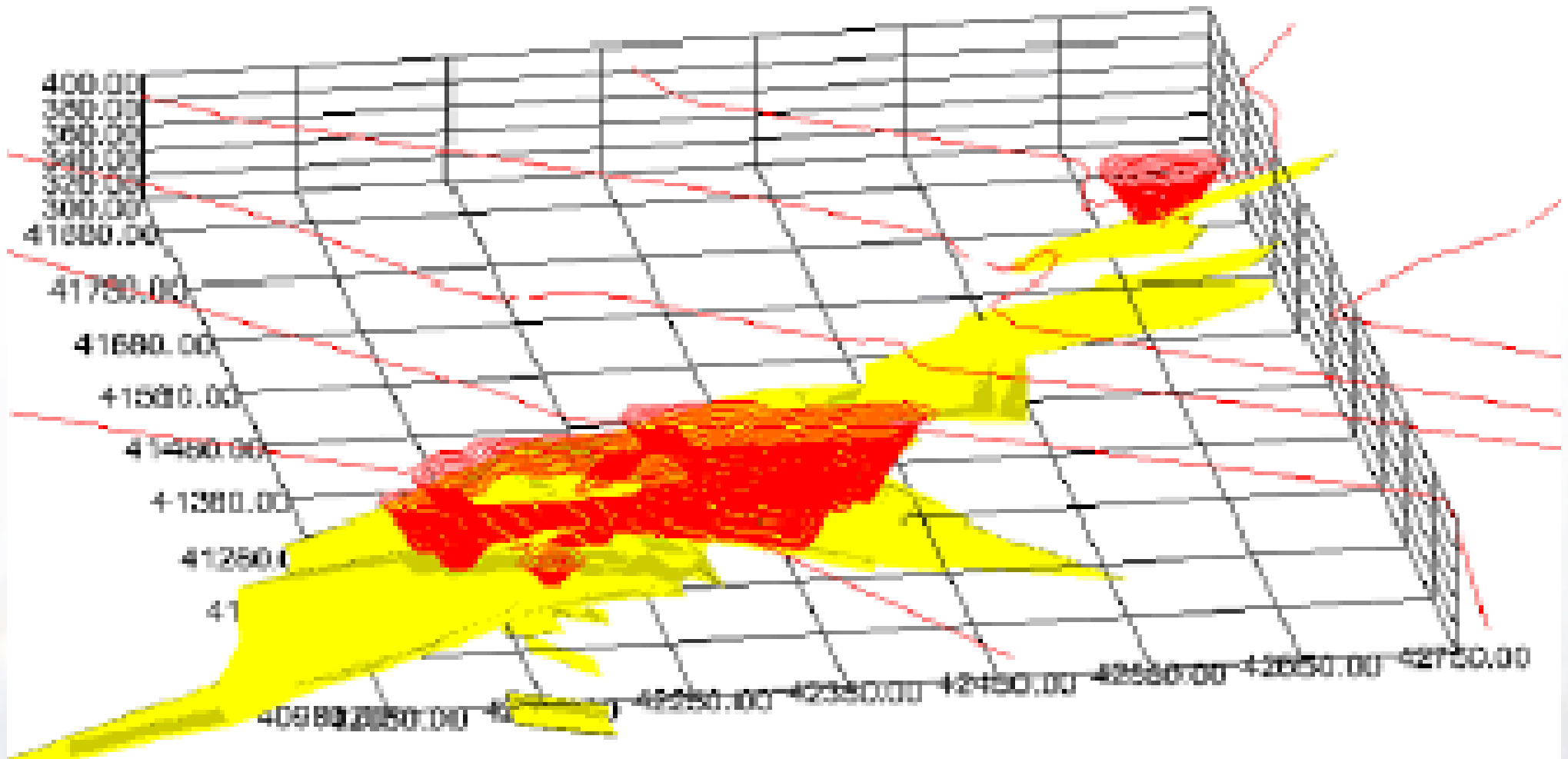


Figure: 3D View of Pitt Outlines and Ore Zone Wireframes (looking North)

Kalpini – Gambia Prospect

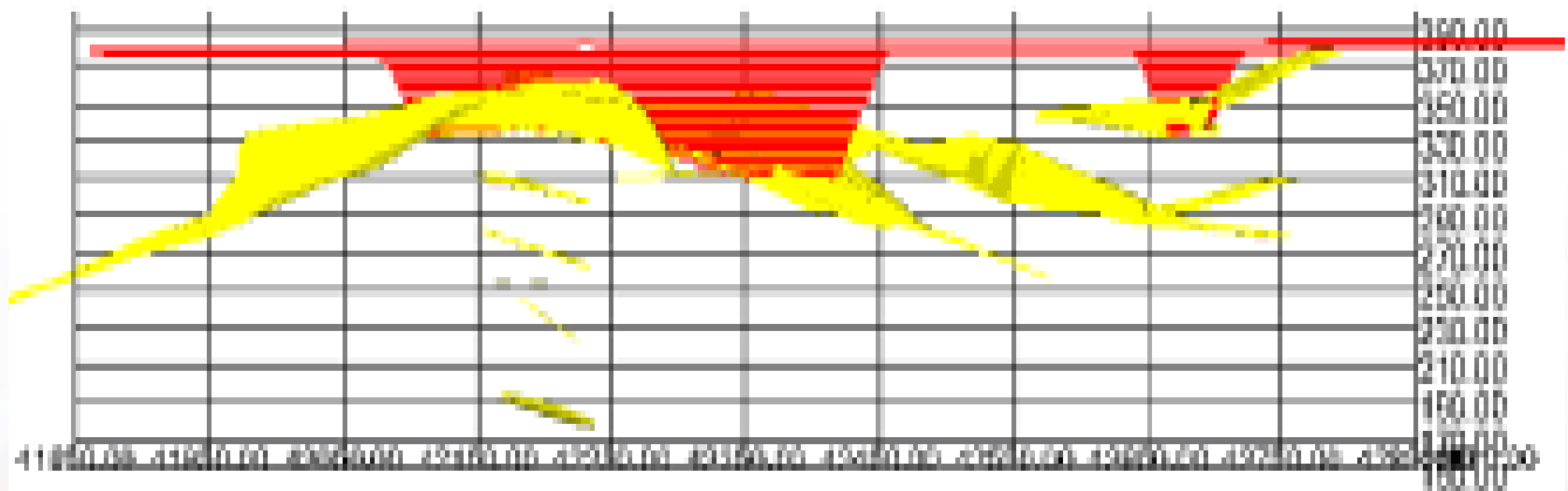


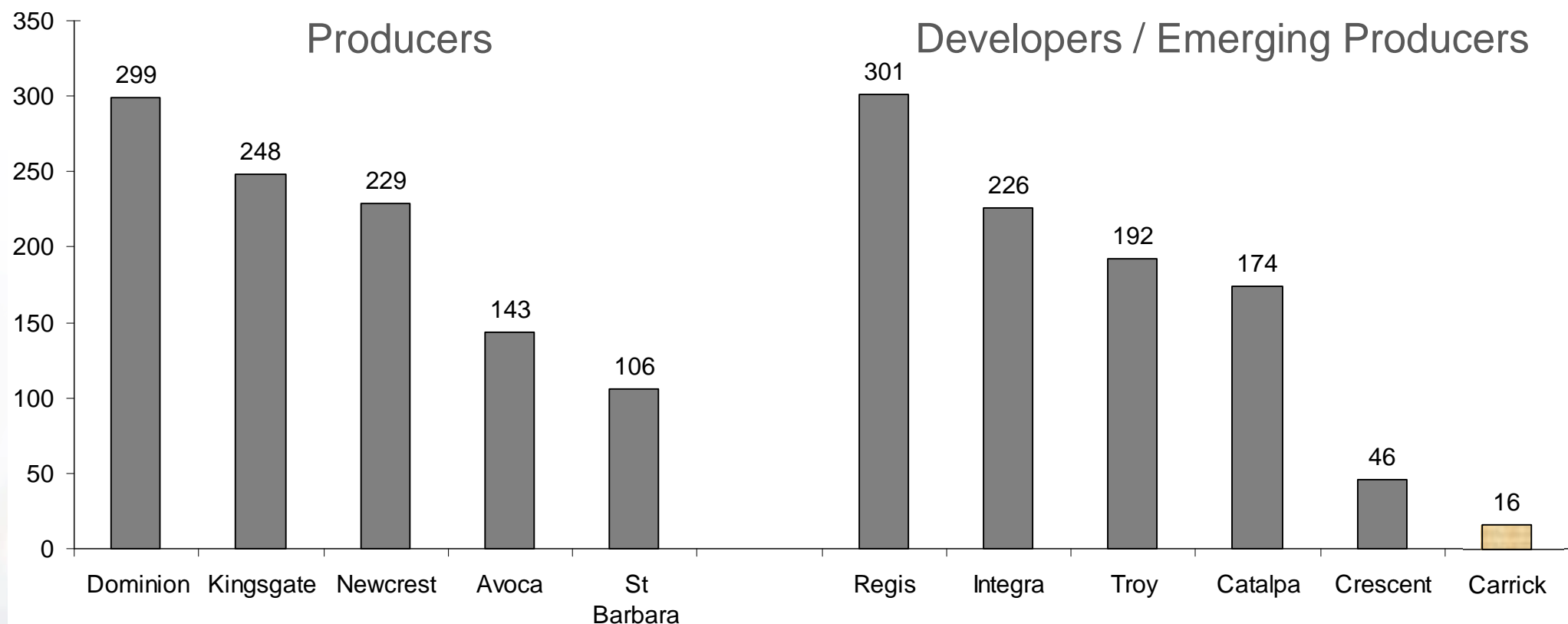
Figure: Section view of Pitt Outlines and Ore Zone Wireframes (looking North)

Kalpini – Atlas Prospect



Comparable Company Analysis

Market Capitalisation / Resource (A\$/oz)



Source: ASX, Company Announcements

Carrick is trading at deep discount to comparable developers



Carrick Gold Limited and Controlled Entities

.... from Exploration toward Development

Questions