



Global Iron and Steel Forecasts Conference

Tuesday 23 March 2010

The FerrAus Agenda

1. The Resource

2. Infrastructure Outcomes

3. 15 Mtpa Producer / Exporter

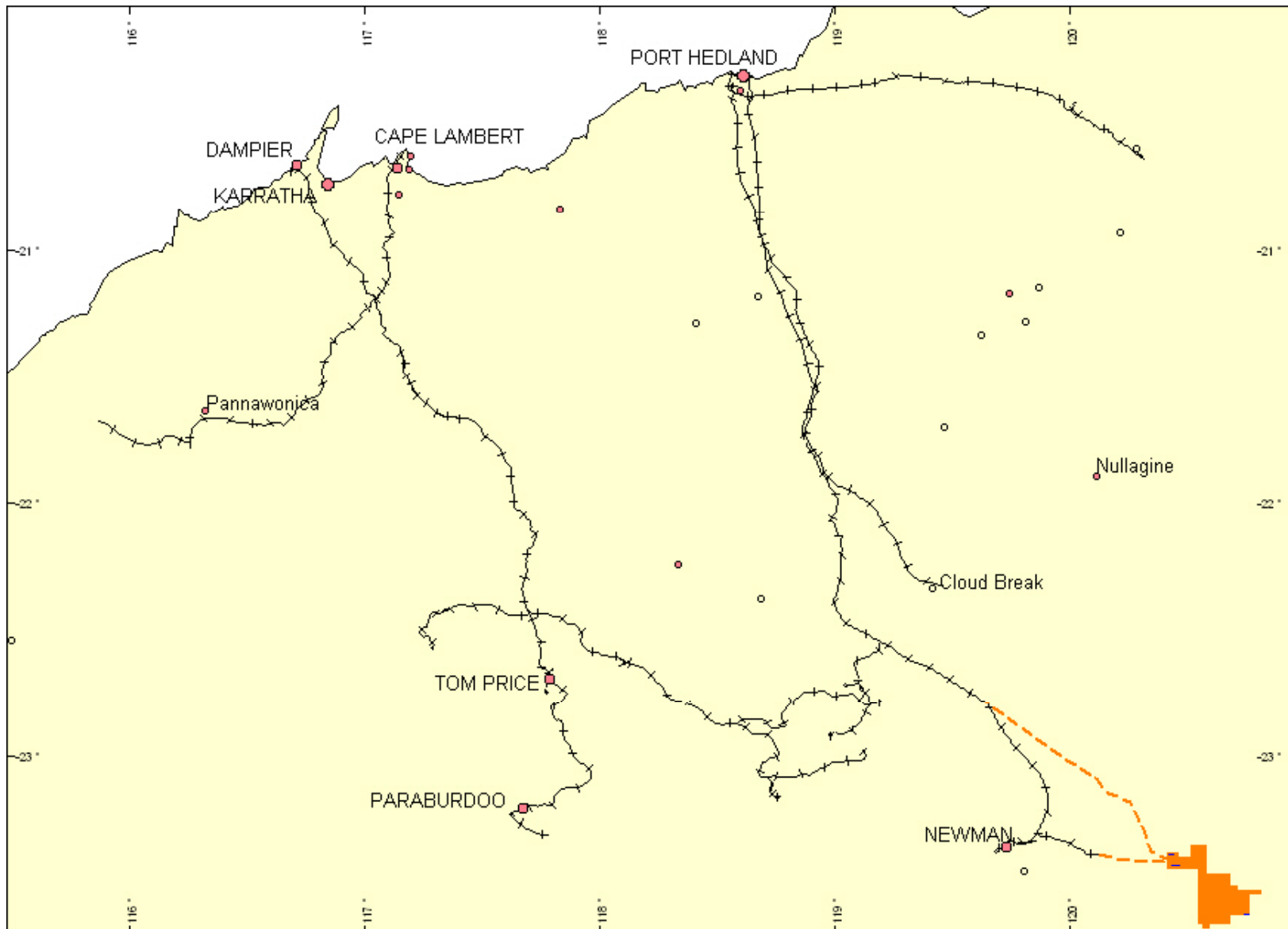
The FerrAus Agenda

1. The Resource

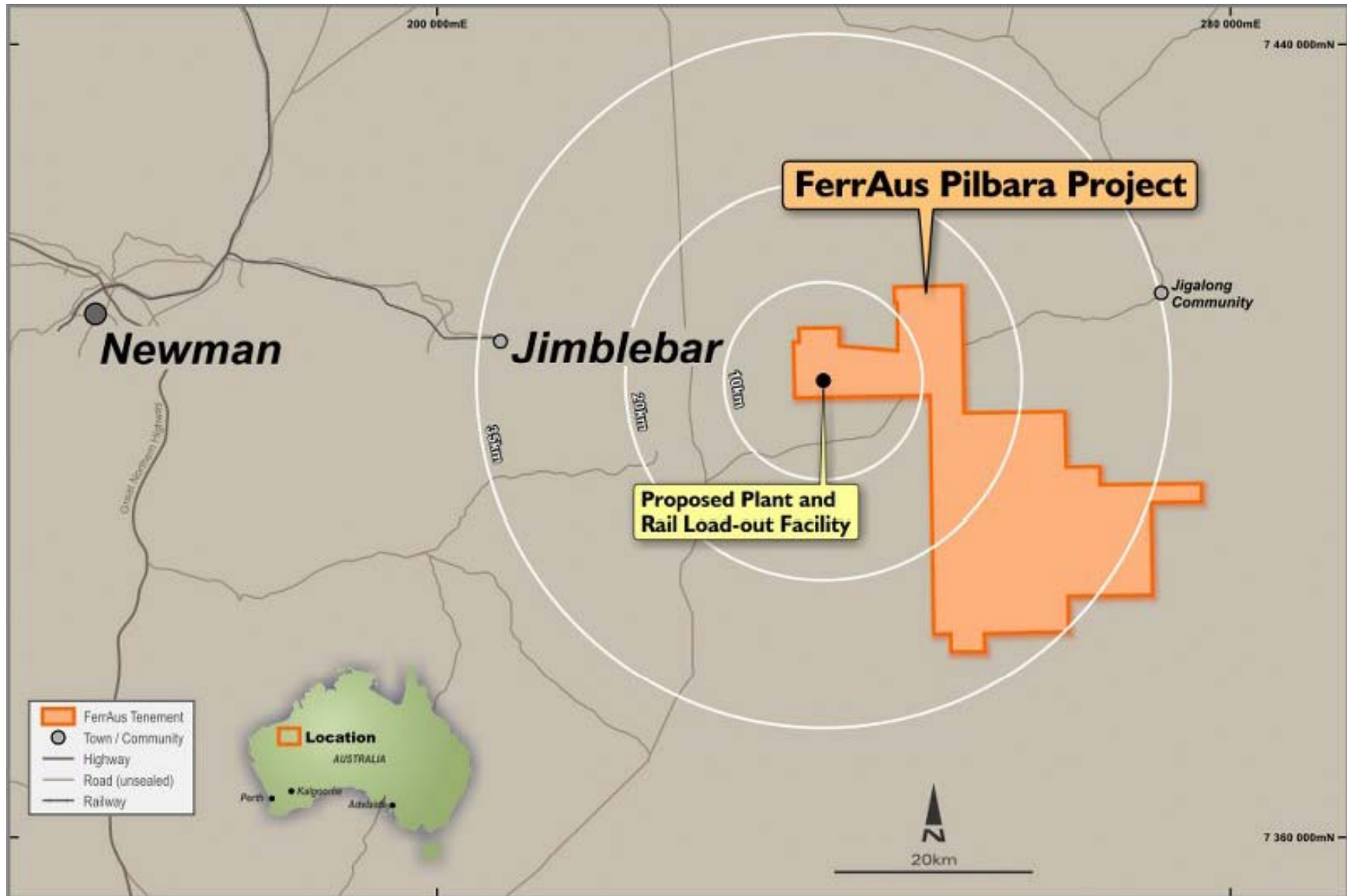
2. Infrastructure Outcomes

3. 15 Mtpa Producer / Exporter

Resources - Location, Location, Location



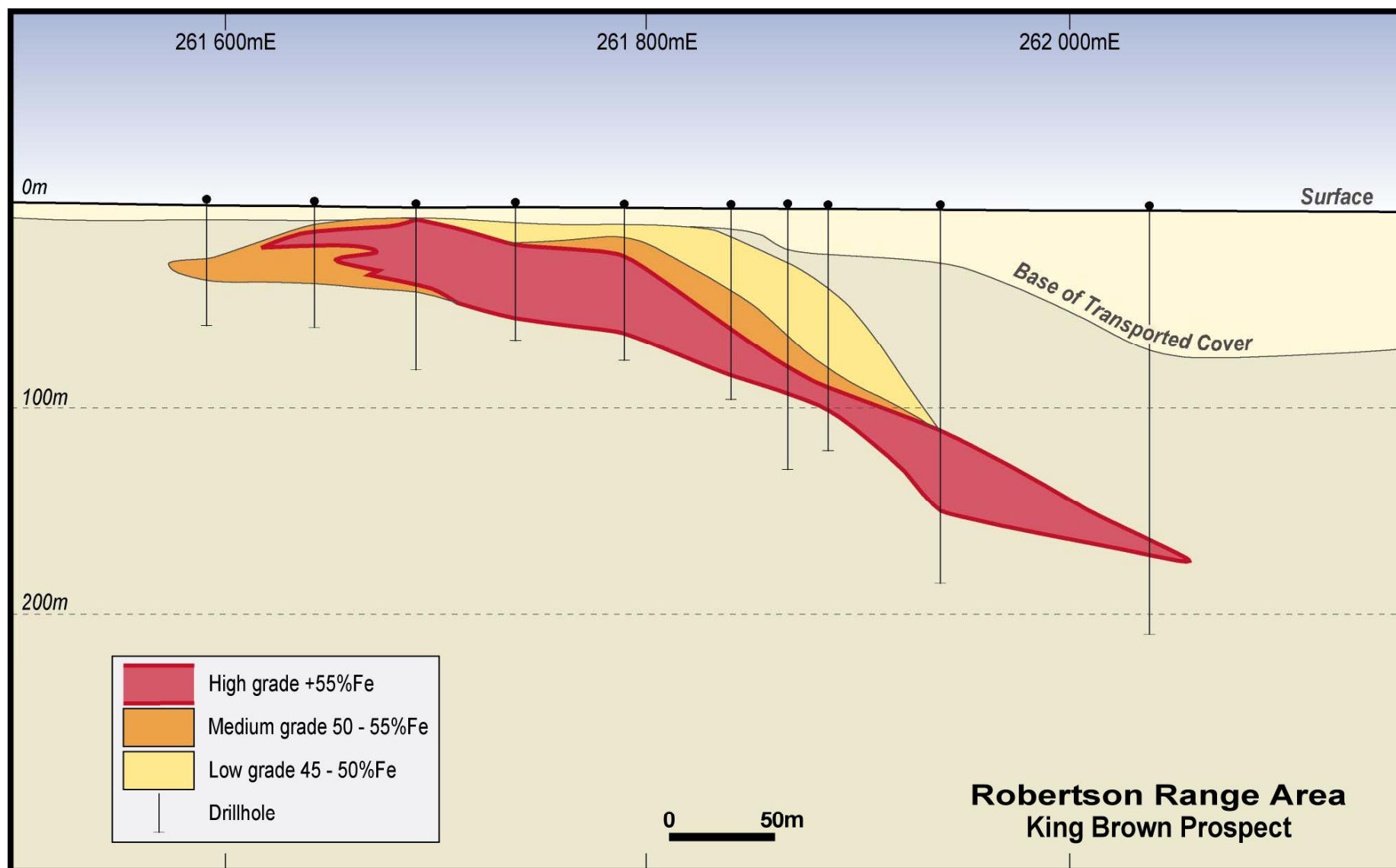
Resources - Location, Location, Location



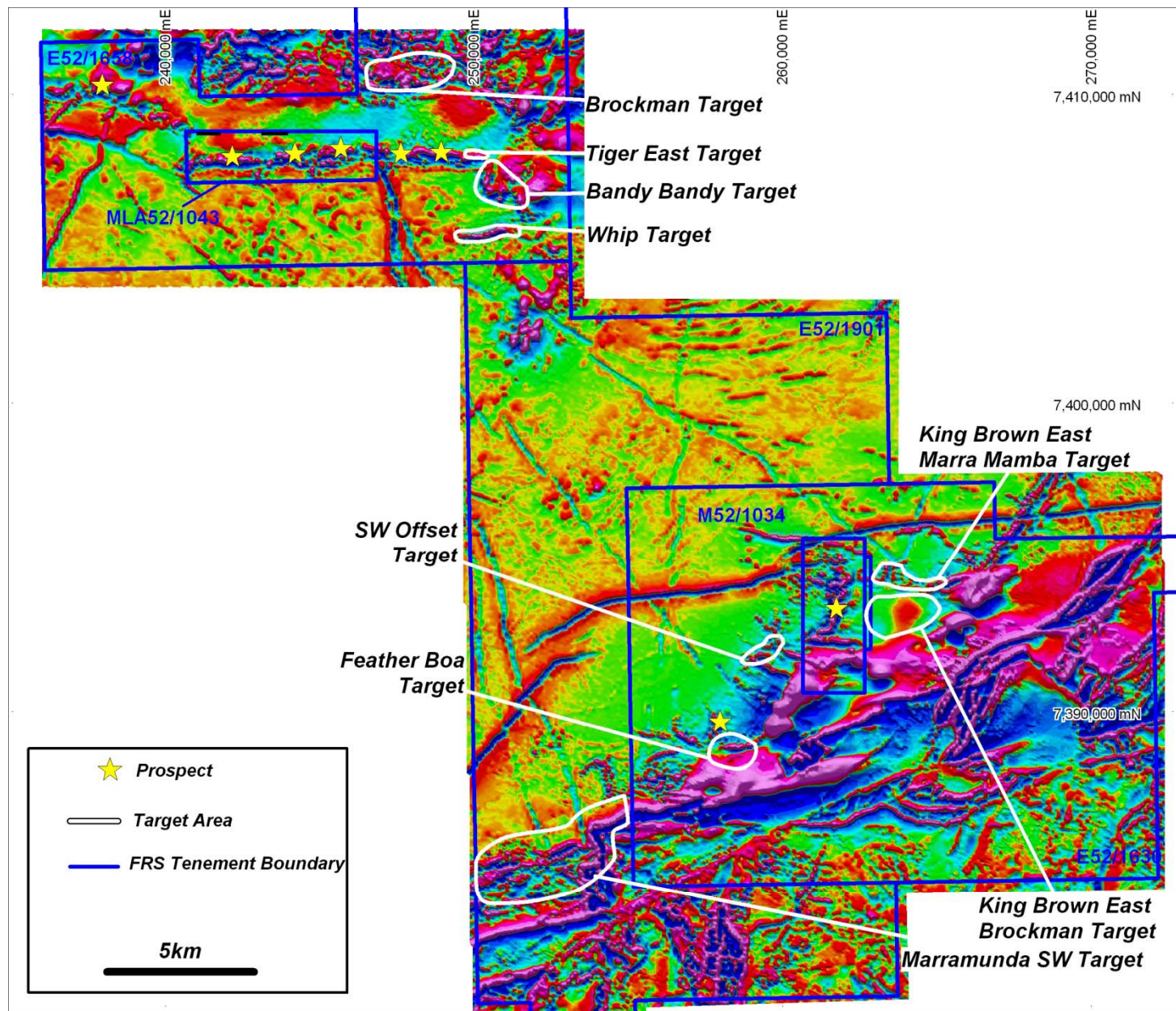
Robust Resource

	Tonnes (Mt)	Fe %	CaFe %
High Grade			
Measured	23.4	58.93	63.84
Indicated	43.7	58.69	63.71
Inferred	124.3	58.34	63.78
Medium Grade			
Inferred	85.6	53.08	58.60
Total	276.9	56.82	62.17
Small discrepancies may occur in the tabulated resources due to the effects of rounding.			

Robust Resource



Resource Potential



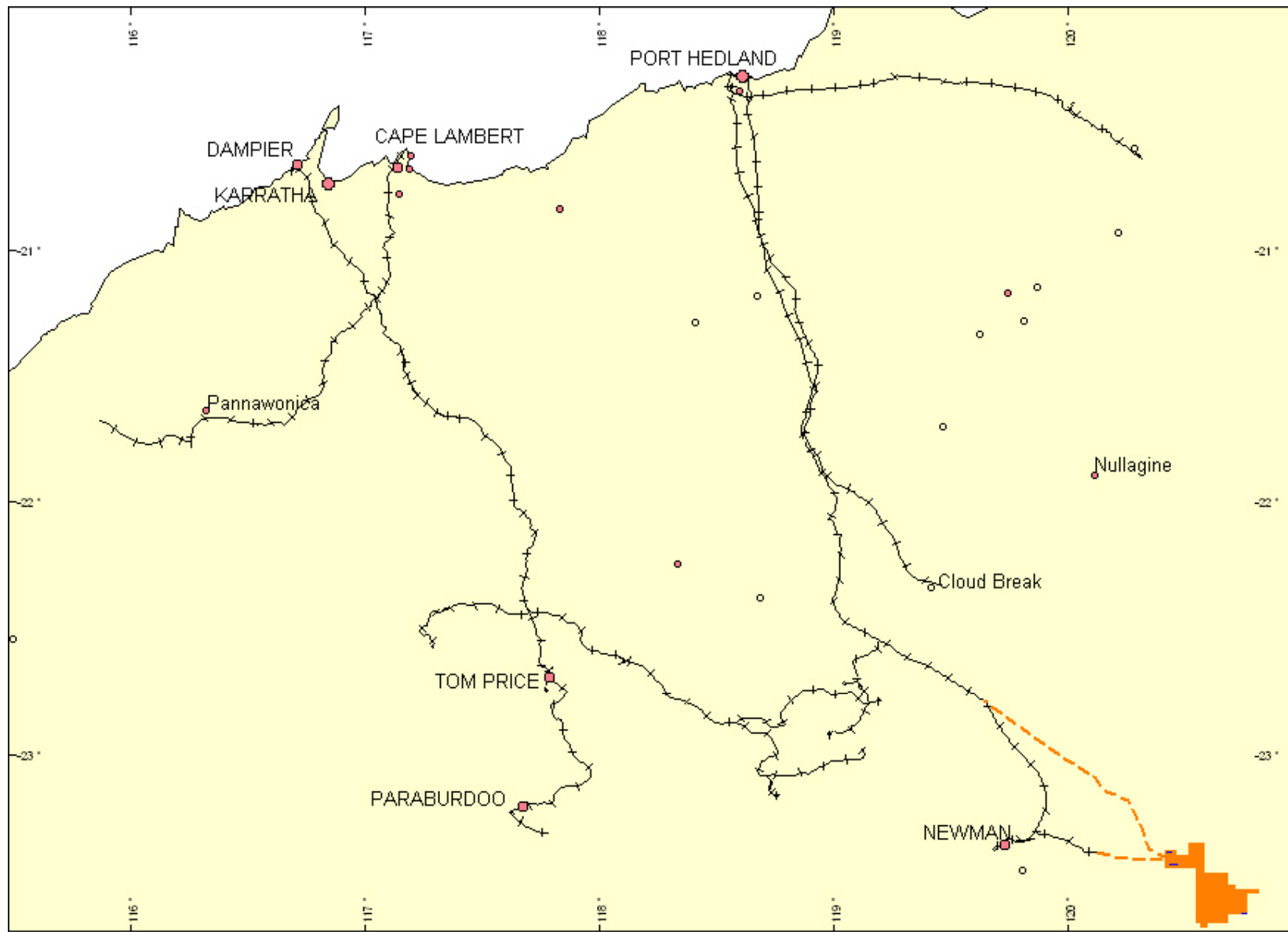
The FerrAus Agenda

1. The Resource

2. Infrastructure Outcomes

3. 15 Mtpa Producer / Exporter

Existing Pilbara Rail and Port



Port - North West Iron Ore Alliance



Rail Haulage

- **State Agreements and RTA**
- **Full WA Supreme Court – Hancock Case 2003**
- **The Judges decision sets parameters**

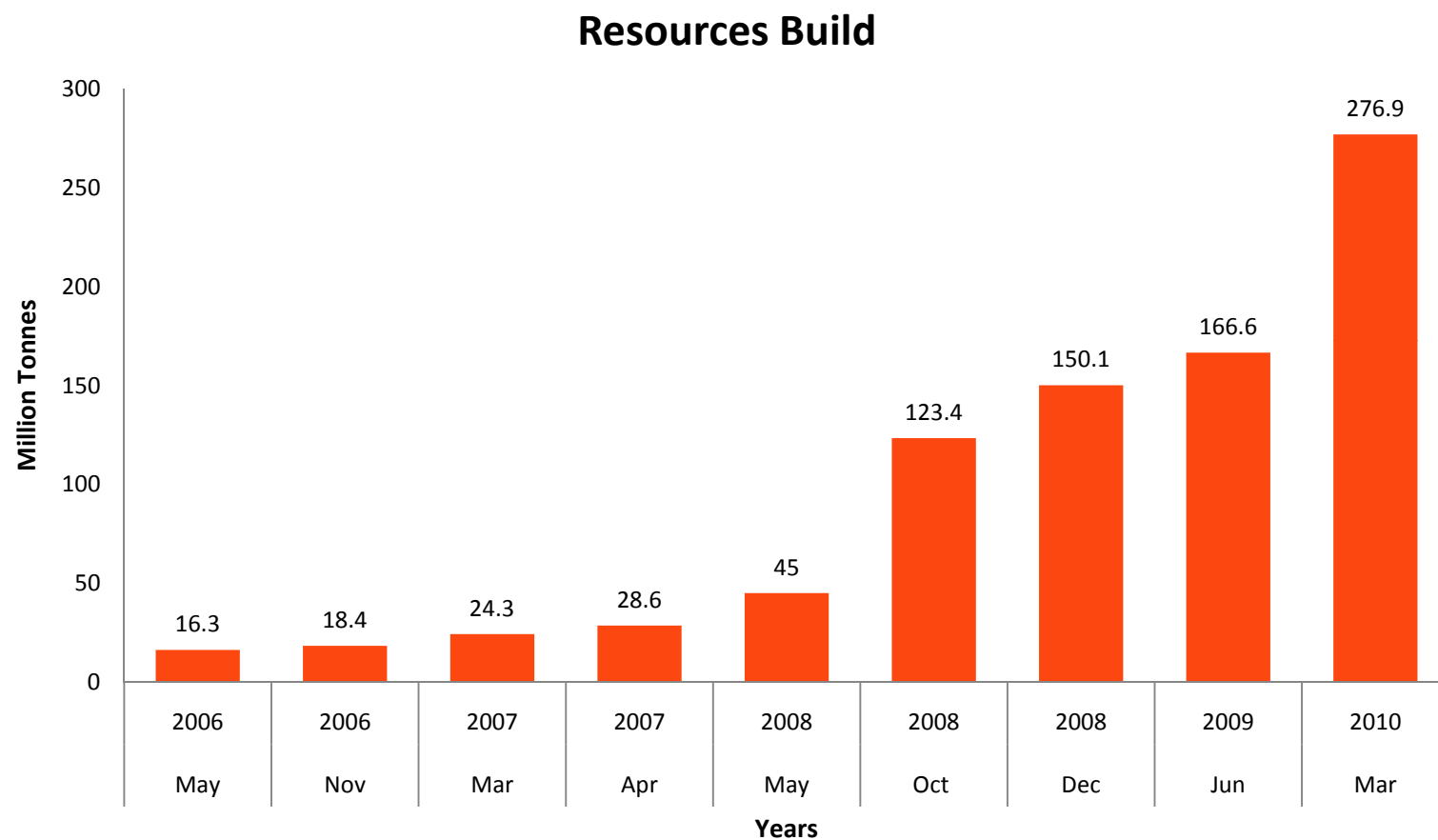
The FerrAus Agenda

1. The Resource

2. Infrastructure Outcomes

3. 15 Mtpa Producer / Exporter

Resource Build



Pre Feasibility Study



Wednesday 24 February 2010

Media Statement

FERRAUS MOVES TO PRE-FEASIBILITY AFTER SCOPING STUDY INDICATES POTENTIAL AS1.1 BILLION NPV

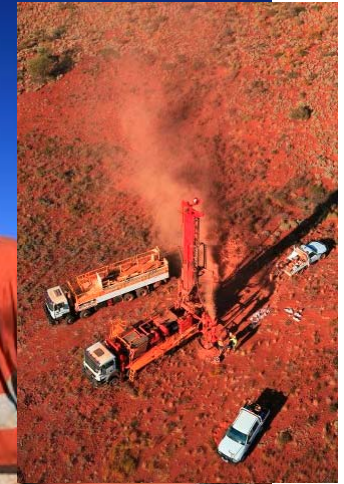
- FERRAUS MOVES TO PRE-FEASIBILITY STUDY**
INDICATES POTENTIAL A\$1.1 BILLION
- Positive Scoping Study completed based on a 15Mtpa iron ore project
 - Potential NPV's range from A\$880 M to A\$1.1 B and IRR of 21% to 30%
 - Scoping Study based on life of mine production of 180 Mt to 250 Mt
 - SKM appointed to conduct Pre-Feasibility Study
 - All iron ore areas now described as the "FerrAus Pilbara Project"
- SKM (Pty) Ltd today outlined a robust development evaluation for its iron ore project, the FerrAus Pilbara Mine in Western Australia, with a potential A\$1.1 billion Net Present Value (NPV) for the life of mine.

- **Scoping Study based on live data**
- **SKM appointed to conduct Pre-Feasibility Study**
- **All iron ore areas now described as the "FerrAus Pilbara Project"**

FerrAus Limited (ASX:FRS) today outlined a robust development evaluation for its iron ore project in the Pilbara Region, located some 35km east of BHP Billiton's Jambarbar Mine in Western Australia, with the completion of a positive Scoping Study that indicates a potential A\$1.1 billion Net Present Value (NPV) for a project ramping up to 15Mtpa.

The NPV of the FerrAus Pilbara Project, using an 8 per cent real after tax discount rate, is A\$600 million, with indicative after tax margins of near 20%, with a payback period of 6 to 8 years and the allowance for EPCM and

Scoping Study

[illegible]

to A\$36 per tonne
rating costs and fuel

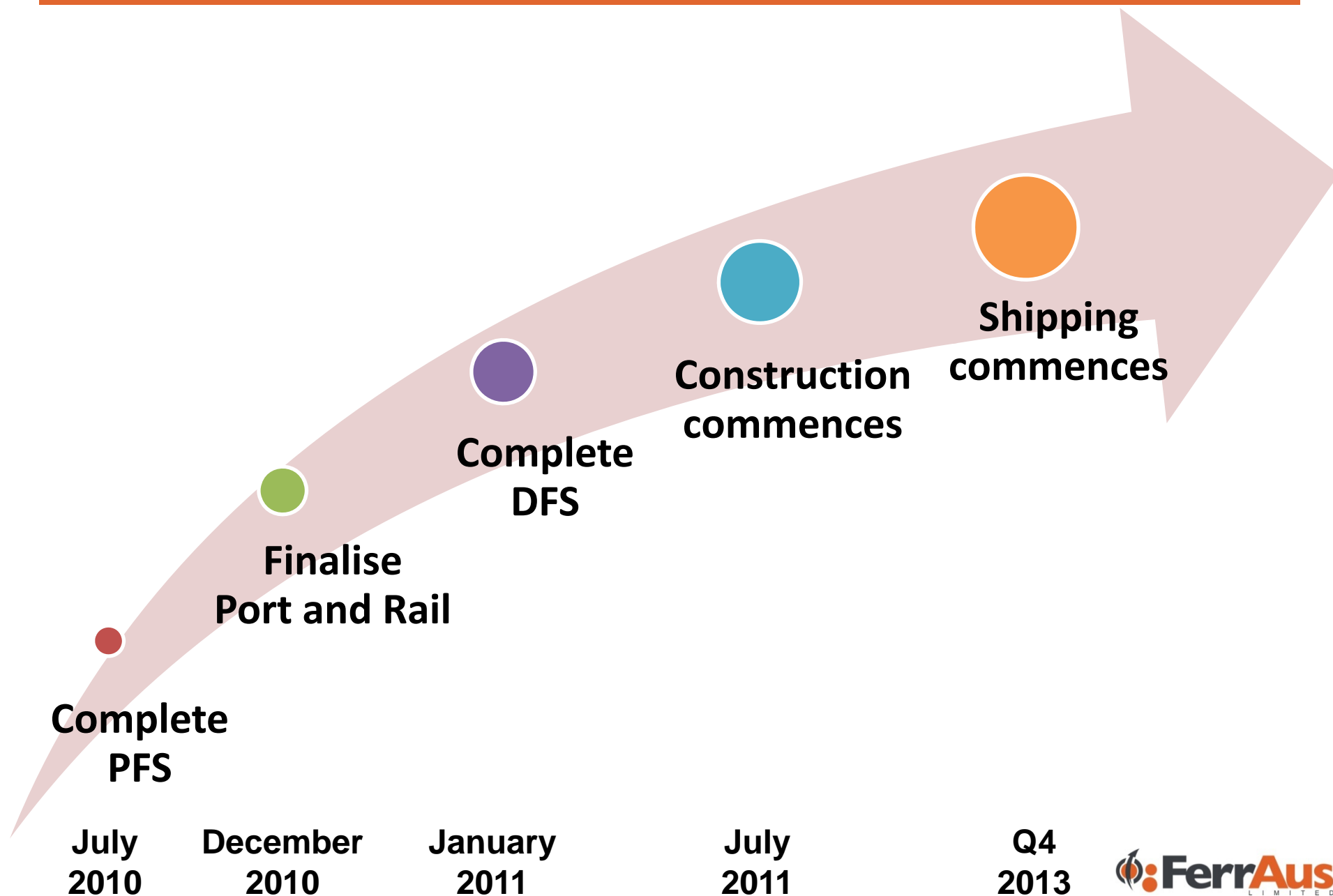
177,647,198
By: 7,500,000
7,526,000
192,672,198

A\$132 million
(per share)

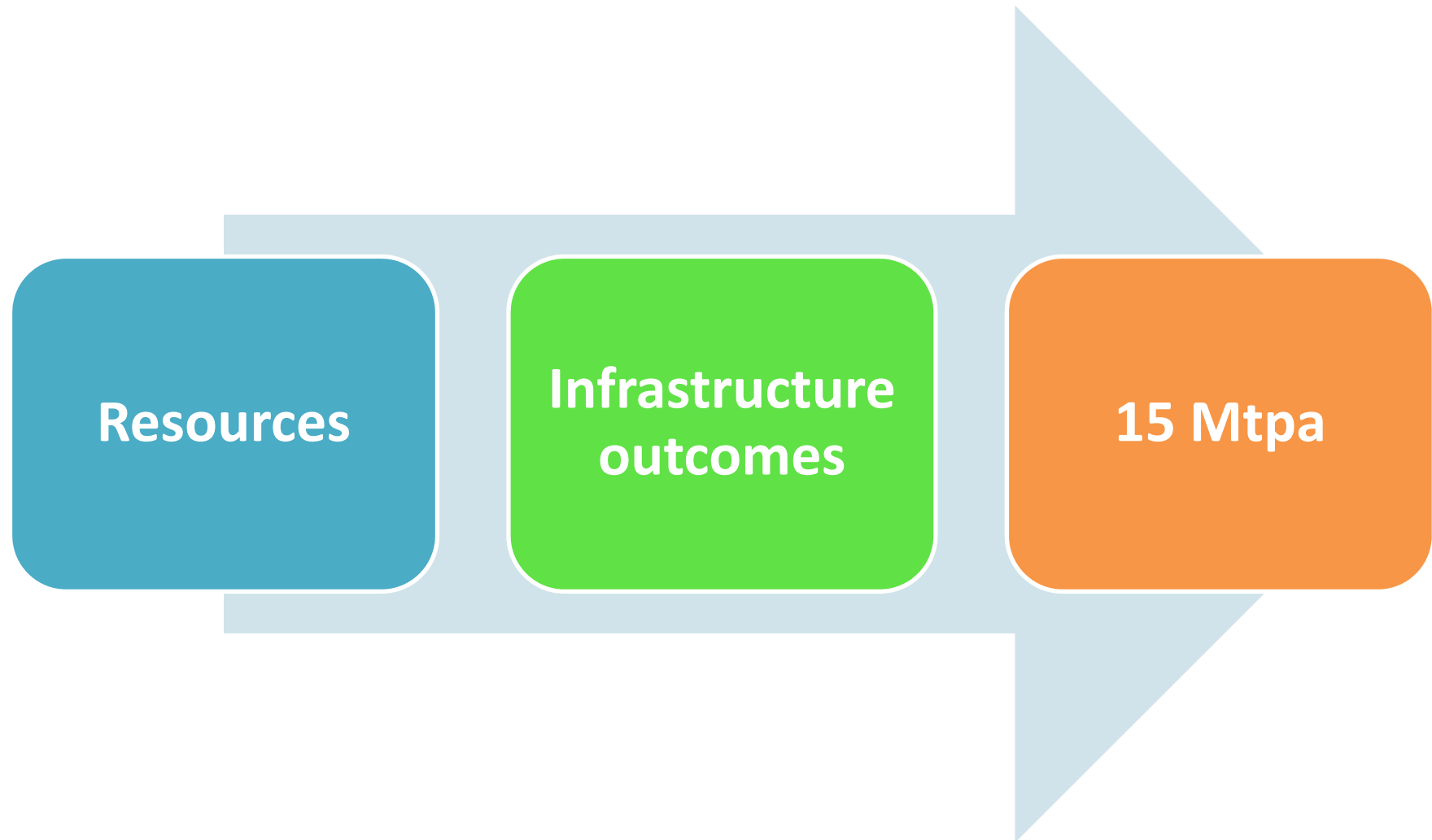
A\$1 per share 31 December 2005

Phone: Tel. 401 (2) 942 4 20

Development Timetable - Well Advanced



Summary - The path to success



Summary - The path to success



Resources

- **277Mt JORC + potential**
- **Compact area**
- **35kms to rail**

Summary - The path to success



Infrastructure Outcomes

- Port is well advanced
- Rail alternatives
- Line of sight

Summary - The path to success



**15 Mtpa
Producer**

Our Plan

- **Resource build**
- **Complete PFS and FS**
- **Best infrastructure outcome**



Questions

www.ferraus.com