

# Superior Resources Limited

ABN 72 112 844 407

**Registered Office:**

Level 2, 87 Wickham Terrace,  
Spring Hill,  
QUEENSLAND, 4000.

**Postal Address:**

PO Box 10288,  
Brisbane Adelaide Street,  
QUEENSLAND, 4000.

**Telephone:** 07 3839 5099

**Facsimile:** 07 3832 5300

**Email:** [manager@superiorresources.com.au](mailto:manager@superiorresources.com.au)

## Greenvale Project Summary and Presentation June 2013

The Greenvale Project is located 250km west-northwest of Townsville in northeast Queensland. The project comprises Mining Lease (ML) 6750 "One Mile", surrounding Exploration Permit Application (EPMA) 18987 "Cockie Creek" and recently granted Exploration Permit (EPM) 19247 "Cassidy Creek". EPM 18987 is proceeding through the granting process and is expected to be granted in August or September 2013. Whilst the exploration permit application does not provide SPQ with an automatic right to the grant of the EPMA, SPQ is unaware of any impediments to the grant.

Drilling completed by SPQ shows that the One Mile ML contains a south - plunging massive and semi-massive sulphide body of considerable size. Whilst grades intersected to date have been sub-economic, the sulphide body indicates that the area contains very good potential for volcanogenic massive sulphide (VMS) deposits. Other work, including geophysical surveys, indicates that there are five additional high-quality untested targets in the area immediately surrounding the sulphide body.

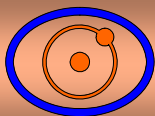
At the Cockie Creek Copper Prospect located 5km northeast of One Mile, previous drilling amounting to 6638m in 63 holes has allowed SPQ to estimate an inferred resource of 13Mt at 0.42% copper for the area that has been drilled adequately.

The Cassidy Creek area is located 80km northwest of One Mile. The principal target area is a 6km long zone of quartz gahnite (zinc spinel) lode rock and gossan which indicates potential for Broken Hill or VMS type mineralization.

SPQ's strategy at Greenvale is to maximise the chances of building a copper resource base on which a mining operation can be established. The resource base required for an operation is likely to be of the order of 30 - 40Mt @ 0.5 – 1.0% Cu with a component of this being of high grade (2.5 to 3% Cu) to supplement the lower grade resource at Cockie Creek. In effect, a high grade copper resource is required to provide a short term payback for a development that can process the lower grade copper resource in the longer term. To achieve the necessary increase in resources, the following outcomes and activities are required:

- Expand the resources at the Cockie Creek Copper Prospect. There are three prime areas where this may be possible – at depth below the existing low grade resource, along strike of the existing low grade resource and associated with the soil copper anomaly to the west of the existing resource.
- Define high grade copper resources at One Mile by drill testing the Tims Gossan, Atkinsons, Dam, North and Fence targets. These targets offer the best chances for discovery of high grade copper resources.
- Evaluate additional copper targets in the Greenvale area. These include targets within SPQ's tenements and those of potential interest held by other parties.

The proposed budget for activities including drilling at both One Mile and Cockie Creek for the next two years is \$1,100,000, subject to successful capital raising.

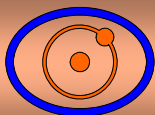


Superior Resources Limited

# Superior Resources Limited

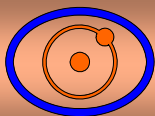
## Greenvale Project Presentation

June 2013



*This presentation has been prepared by the management of Superior Resources Limited (the Company) for the benefit of brokers, analysts and investors and not as specific advice to any particular party or persons. The information is based on publicly available information, internally developed data and other sources. Where an opinion is expressed in this presentation, it is based on the assumptions and limitations mentioned herein and is an expression of present opinion only. No warranties or representations can be made as to origin, validity, accuracy, completeness, currency or reliability of the information. The Company disclaims and excludes all liability (to the extent permitted by law) for losses, claims, damages, demands, costs and expenses of whatever nature arising in any way out of or in connection with the information, its accuracy, completeness or by reason of reliance by any person on any of it. Where the Company expresses or implies an expectation or belief as to the success of future exploration and the economic viability of future project evaluations, such expectation or belief is expressed in good faith and is believed to have a reasonable basis. However, such expected outcomes are subject to risks, uncertainties and other factors which could cause actual results to differ materially from expected future results. Such risks include, but are not limited to, exploration success, metal price volatility, changes to current mineral resource estimates or targets, changes to assumptions for capital and operating costs as well as political and operational risks and governmental regulation outcomes. The Company does not have any obligation to advise any person if it becomes aware of any inaccuracy in or omission from any forecast or to update such forecast.*

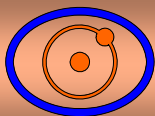
*The information in this presentation that relates to exploration results and mineral resources is based on information compiled by Mr Ken Harvey, a full-time employee and shareholder of the Company, who is a Member of the Australasian Institute of Mining and Metallurgy and a Member of the Australian Institute of Geoscientists. Mr Harvey has sufficient experience which is relevant to the style of mineralisation and type of deposit under consideration and to the activity which he is undertaking to qualify as a Competent Person as defined in the 2004 Edition of the 'Australasian Code for Reporting of Exploration Results, Mineral Resources and Ore Reserves'. Mr Harvey consents to the inclusion in this presentation of the matters based on his information in the form and context in which it appears.*



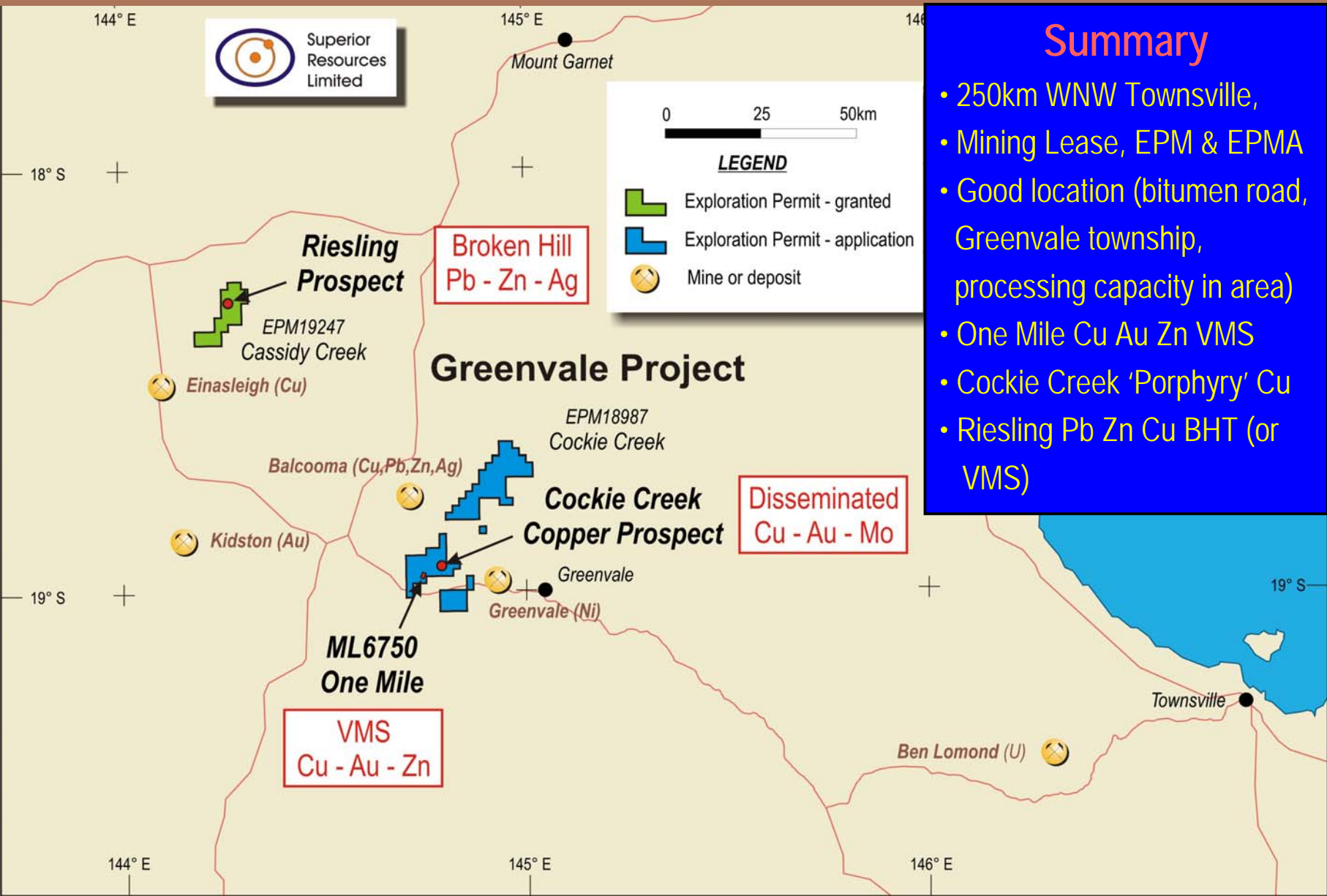
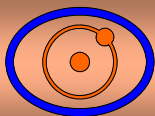
Superior Resources Limited

**Greenvale Project**

# Greenvale Project

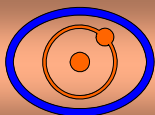


Location	250 km WNW Townsville, northeast Queensland
Tenements	ML6750 "One Mile", EPMA18987 "Cockie Creek", EPM19247 "Cassidy Creek"
Targets	Volcanogenic massive sulphide (VMS) deposits, disseminated copper deposits and Broken Hill type deposits.
One Mile	Large massive and semi-massive sulphide body – subeconomic Five surrounding quality geophysical and other targets to be drilled
Cockie Creek	Inferred resource 13Mt @ 0.42% Cu Potential higher grade copper below resource Potential further low-grade copper mineralisation in area
Cassidy Creek (Riesling)	Six km zone of quartz gahnite lodes and surface samples to 24% Pb Potential for Broken Hill type (BHT) or VMS mineralisation



## Summary

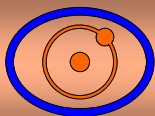
- 250km WNW Townsville,
- Mining Lease, EPM & EPMA
- Good location (bitumen road, Greenvale township, processing capacity in area)
- One Mile Cu Au Zn VMS
- Cockie Creek 'Porphyry' Cu
- Riesling Pb Zn Cu BHT (or VMS)



## Summary

- Outcropping VMS gossan
- Large sulphide (pyrite) body
- Near-economic Cu-Au-Zn-Ag intersections
- Target - thickened area of the sulphide body with better copper and gold grades
- Prospective basic to intermediate volcanic host sequence
- Other geophysical targets in surrounding area

← Drilling Massive Sulphides

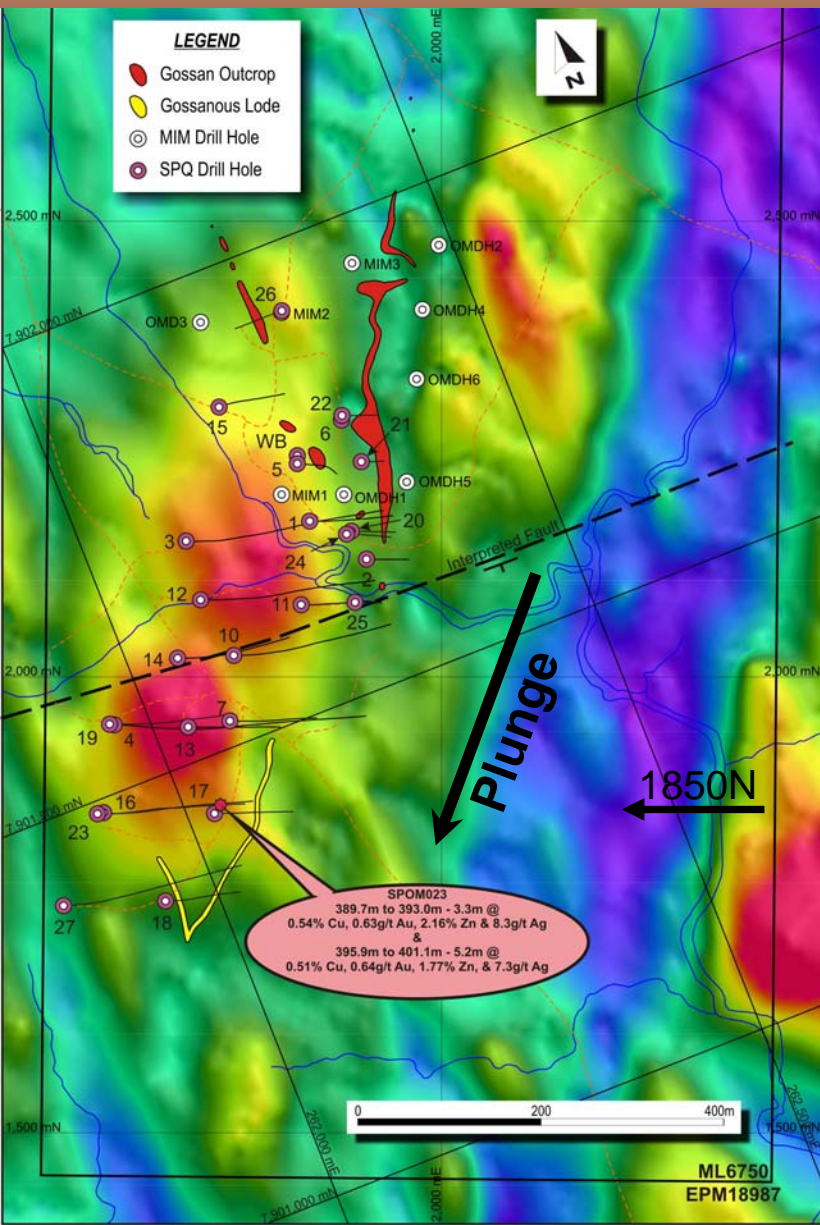
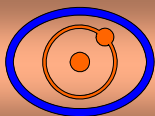


Superior Resources Limited

# One Mile Project – Gossan

A Substantial Gossan on Massive Sulphide

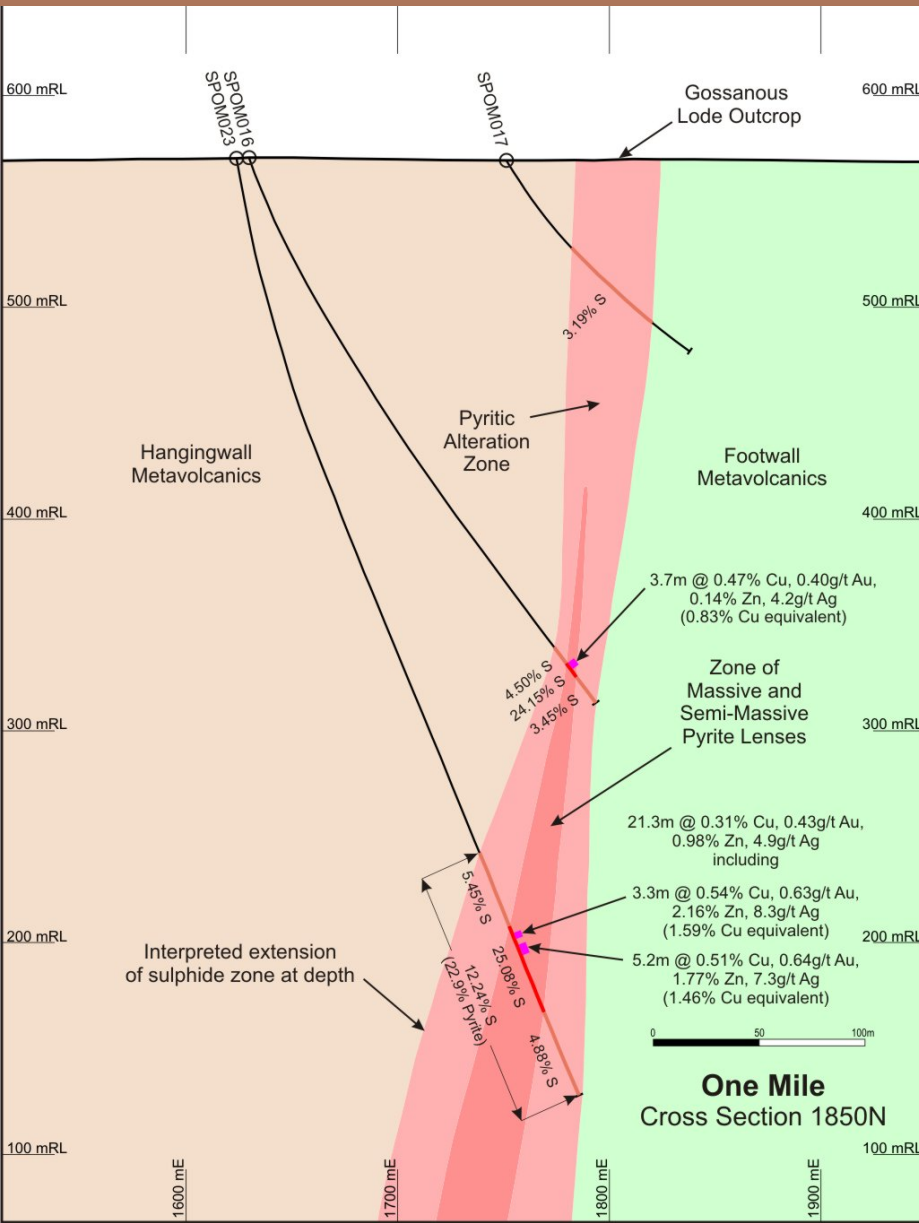
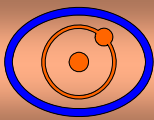




## Gossans and Drill Holes on Magnetics

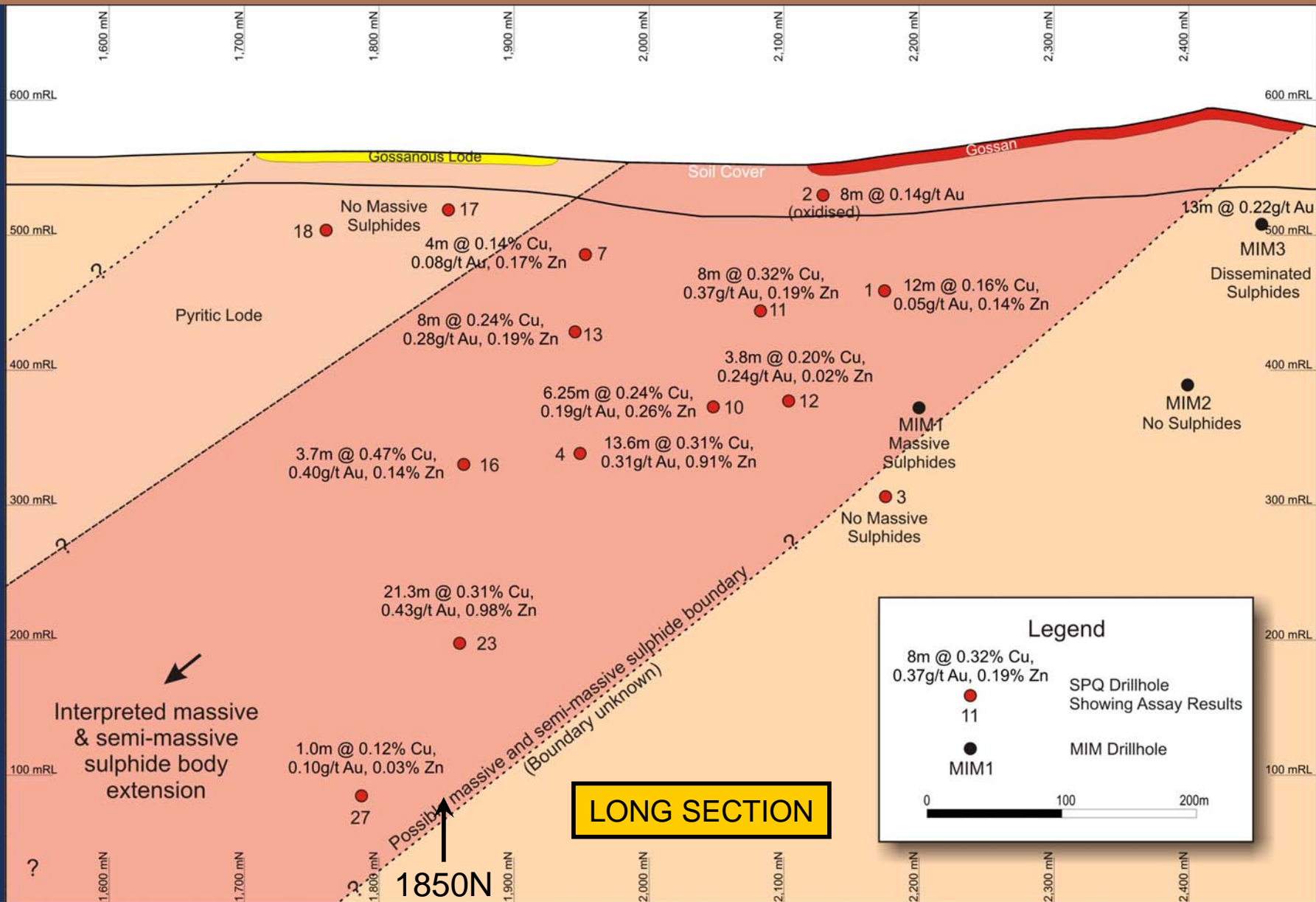
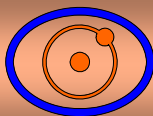
- Gossan/Lode extends over 800m strike length
- Improvement in width and grade of the massive and semi-massive sulphides to the south down the plunge of the sulphide body
- Best intersection from drilling in hole SPOM023 with 21.3m @ 0.31% Cu, 0.43g/t Au, 0.92% Zn including:  
 3.3m @ 0.54% Cu, 0.63g/t Au, 2.16% Zn, 8.3g/t Ag (1.59% Cu equivalent) and  
 5.2m @ 0.51% Cu, 0.64g/t Au, 1.77% Zn, 7.3g/t Ag (1.46% Cu equivalent)
- Gold (g/t) to copper (%) ratio greater than 1:1
- Enclosing pyritic alteration zone thickens and intensifies to the southwest

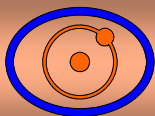
(Copper equivalents based on prices of \$7177/t Cu, \$1520/oz Au, \$1738/t Zn, \$26/oz Ag)



## Cross Section 1850N

- Gossanous lode outcrop
- Hole SPOM016 - narrow pyritic alteration zone enclosing a thin massive / semi-massive sulphide lode (0.83% Cu eq.)
- Hole SPOM023 - wide pyritic alteration zone enclosing a wide massive / semi-massive sulphide zone (1.5% Cu eq.)
- Thickening of both pyritic alteration zone and sulphide zone at depth with increasing copper, gold, zinc and silver grades
- Prospect of a target zone in the vicinity of hole SPOM023 - along strike (north or south) or at depth
- Gold (g/t Au) to copper (%) ratio > 1:1

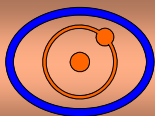




## Drill Hole SPOM012

- Massive and semi-massive sulphides (pyrite with chalcopyrite and sphalerite)
- Coarse grained due to amphibolite metamorphic grade
- Alteration – muscovite (after sericite), biotite, phlogopite and silica





Superior Resources Limited

# One Mile Project – Main Lode



Superior  
Resources  
Limited

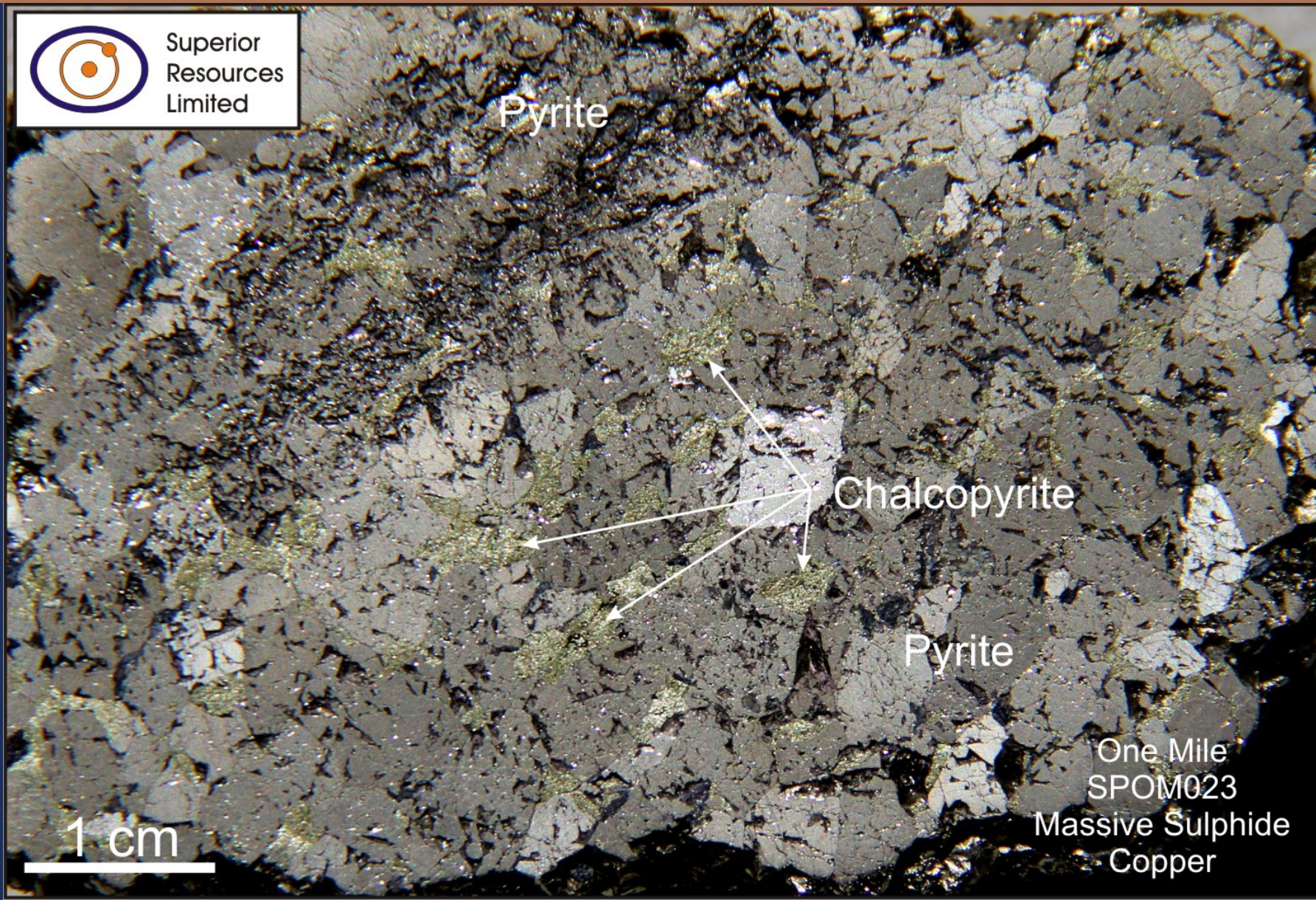
Pyrite

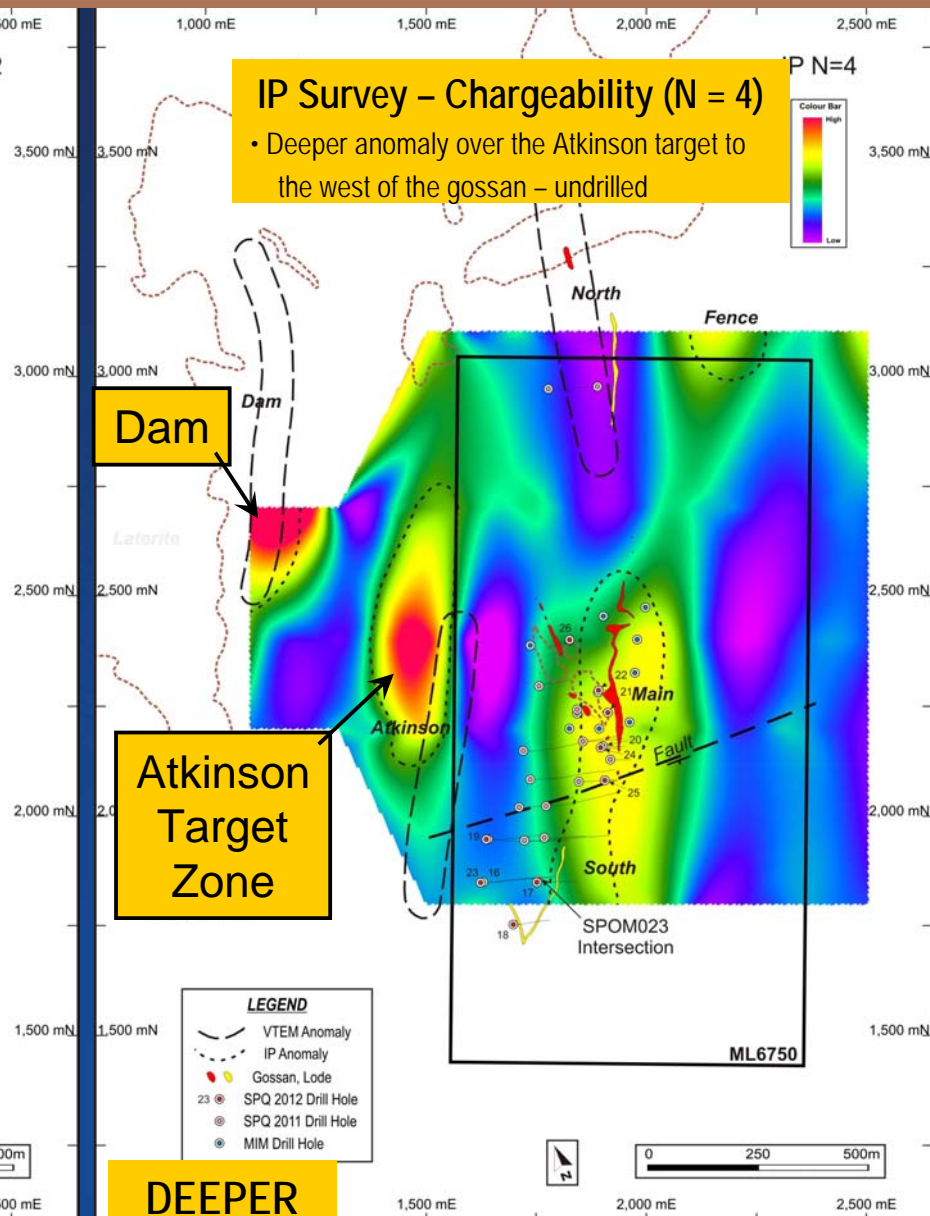
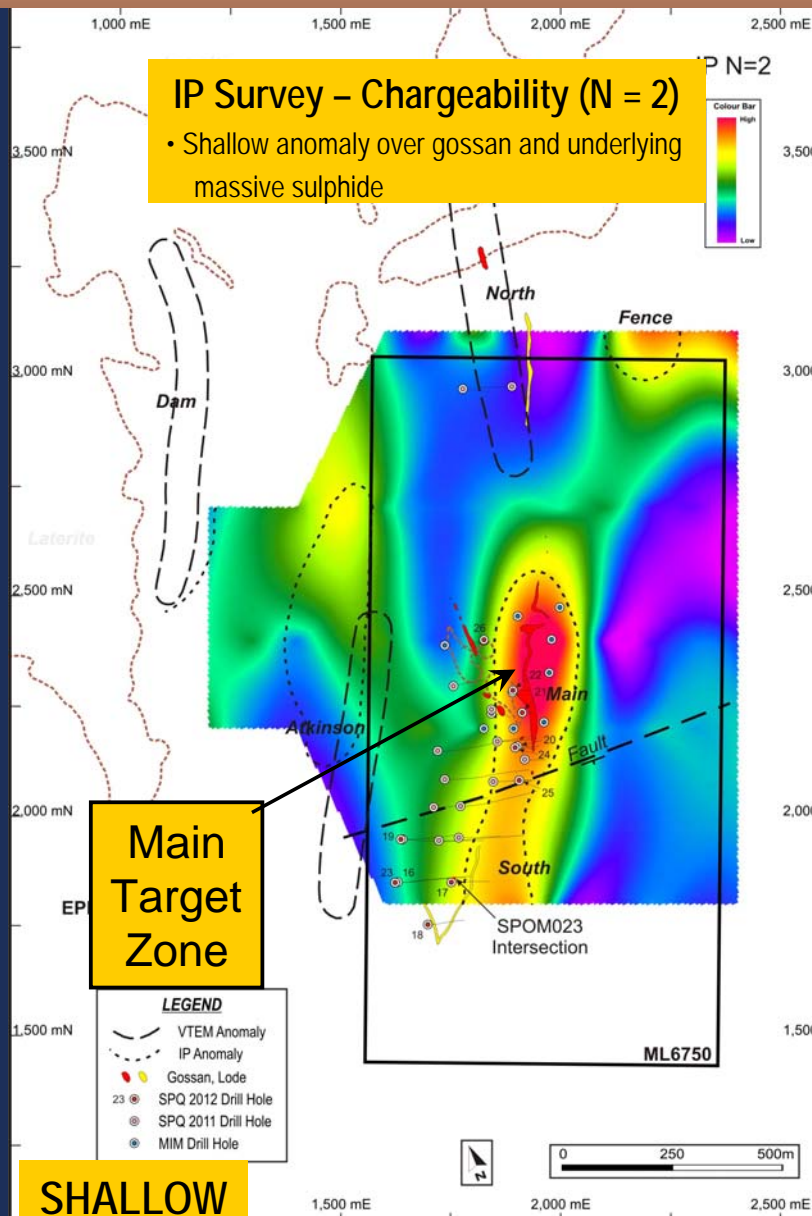
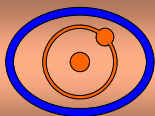
Chalcopyrite

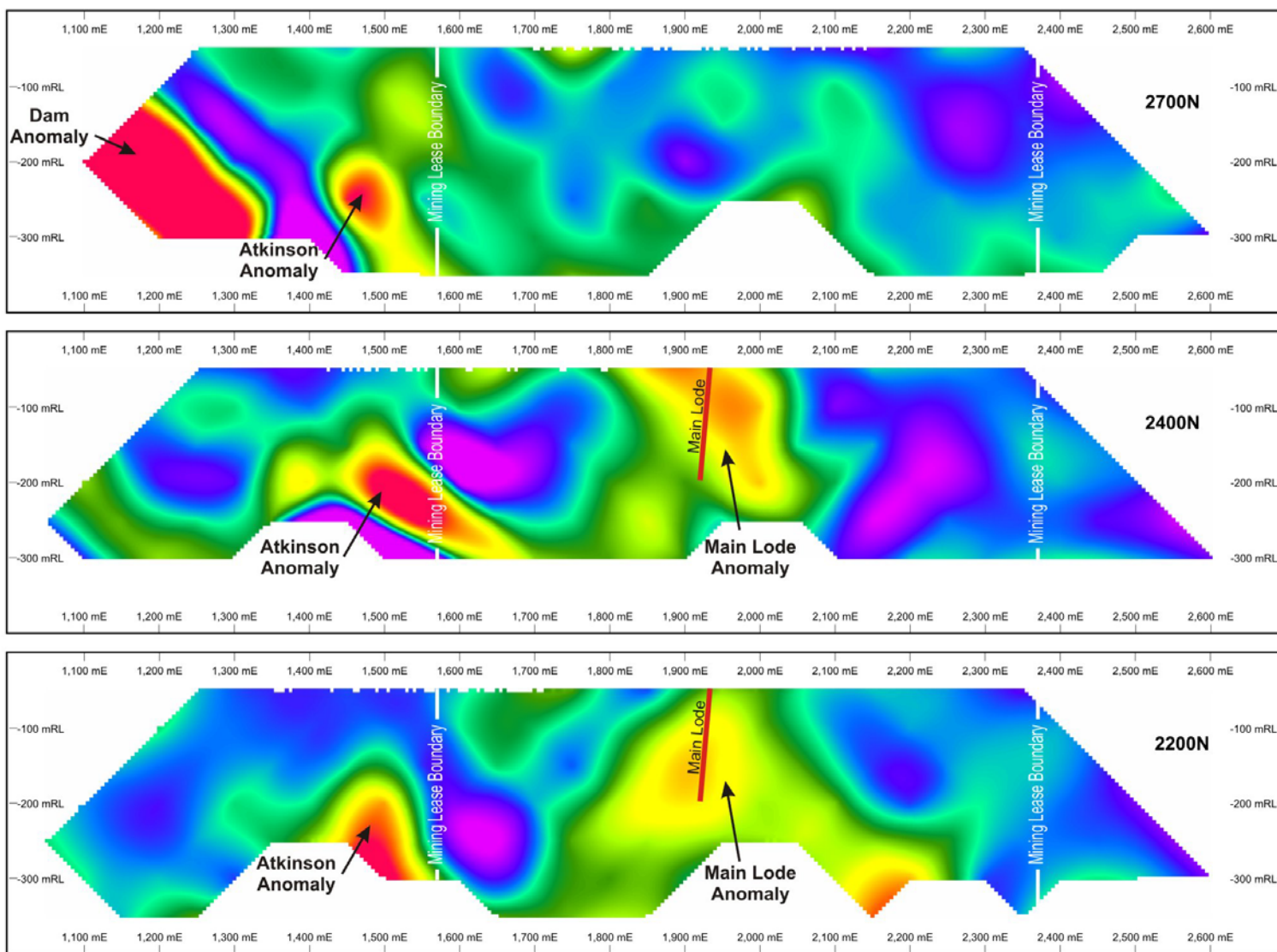
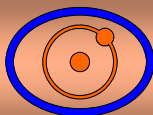
Pyrite

1 cm

One Mile  
SPOM023  
Massive Sulphide  
Copper





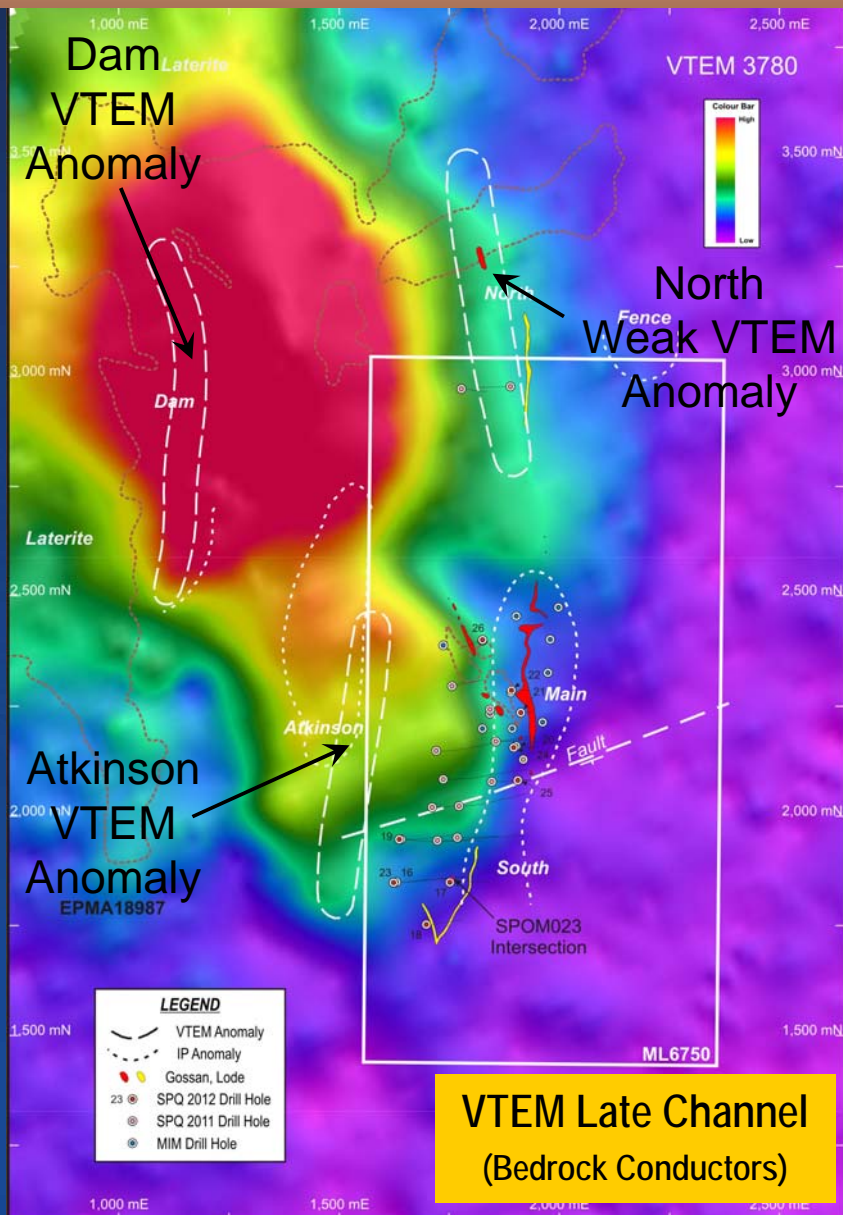
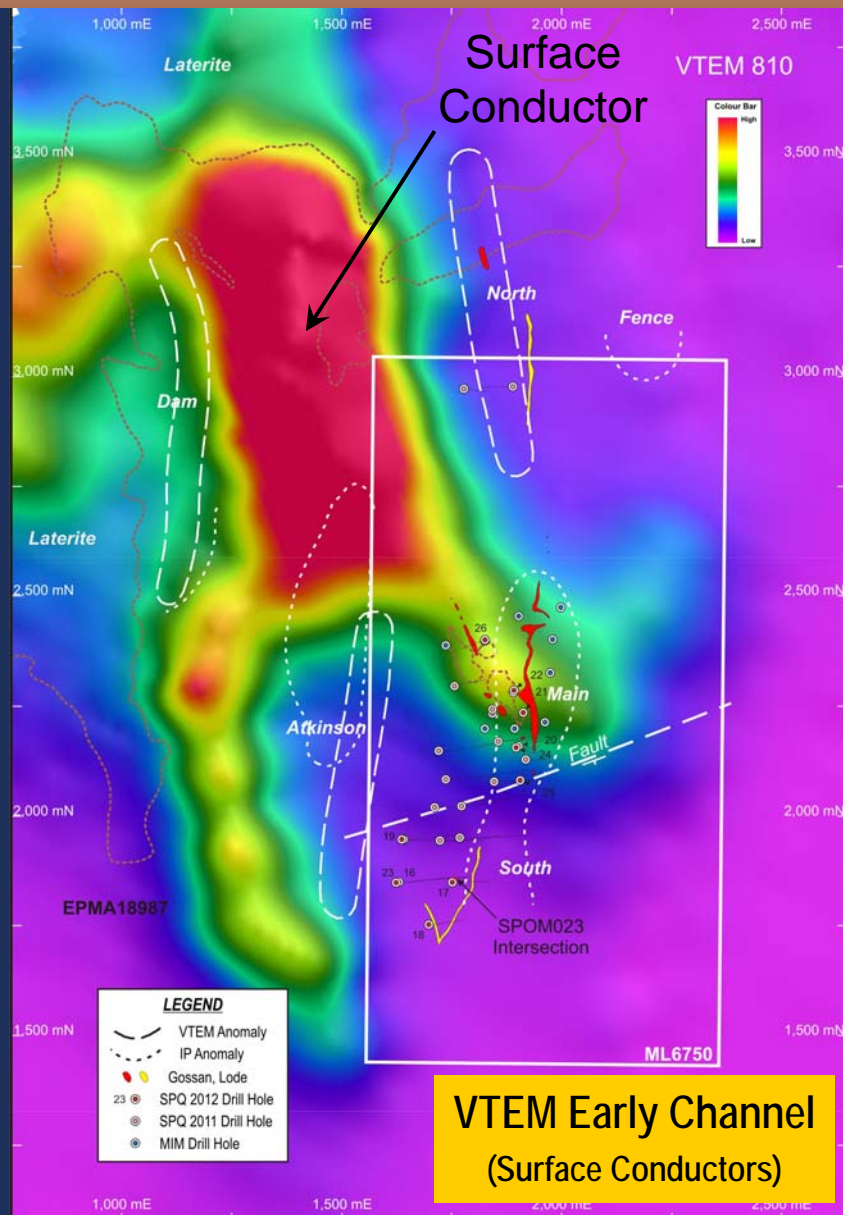
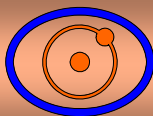


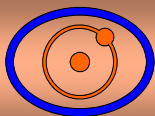
CONTRACTOR: SEARCH EXPLORATION SERVICES  
OPERATOR: PAUL McINNIS  
TRANSMITTER: GDP-10  
RECEIVER: GDP-16  
CONFIGURATION: DIPOLE - DIPOLE  
ELECTRODE SPACING: 100M

Normalised Chargeability  
**PSEUDOSECTIONS**

0 100 200m

**ML6750 "ONE MILE"**  
**INDUCED POLARISATION SURVEY**  
**COMPLETED BY CEC**  
**JULY 1990**

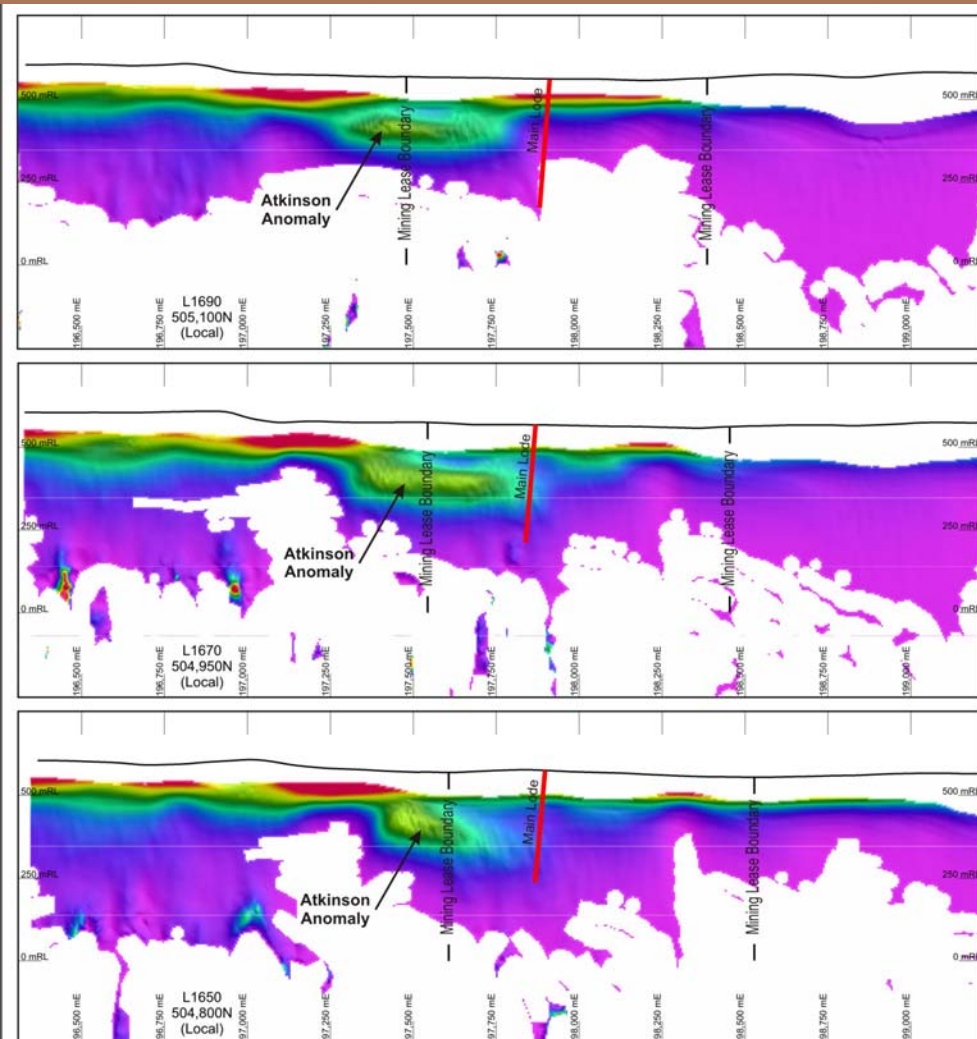




## ← Conductivity Sections

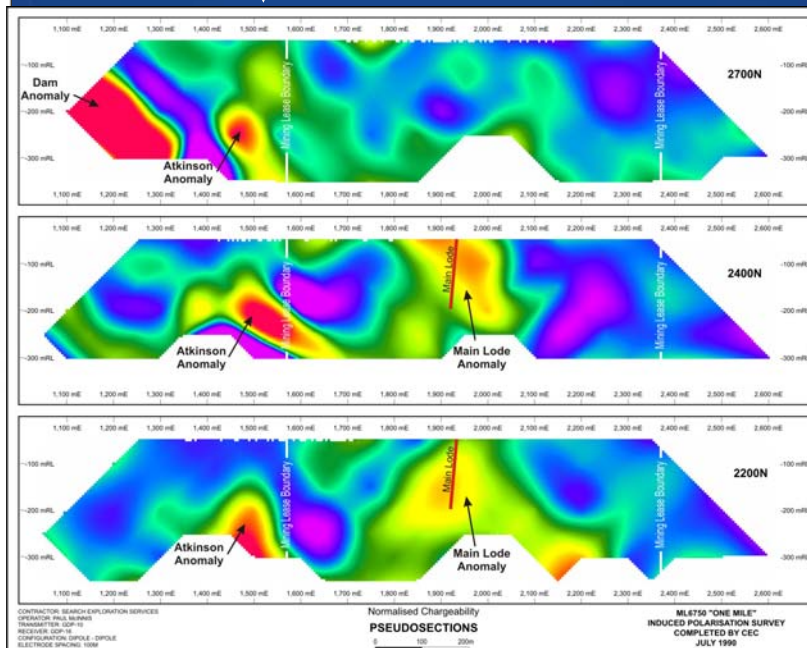
- Derived from VTEM data
- Atkinson target is the best anomaly in the VTEM survey – A prime drilling target
- Coincident with IP anomaly
- Depth – 150m
- Expected to be steeply dipping

## ↙ Chargeability Sections

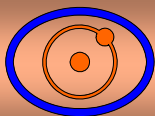


VTEM survey completed by Beacon Minerals Limited  
 Conductivities interpreted using EMaxAir with Sharpening ON  
 Grid Shown is Local VTEM Grid  
 Common Point: 200,000E; 500,000N (Local) = 259,995E; 7,896,595N (MGA)  
 Local North = 46.9 degrees (MGA)

**One Mile Mining Lease  
 VTEM Conductivity Sections  
 L1650 to L1690  
 Looking North  
 Local VTEM Grid**



CONTRACTOR: SEARCH EXPLORATION SERVICES  
 OPERATOR: PAUL BARNES  
 RECEIVER: SQUID-70  
 INSTRUMENT: SQUID-70  
 ELECTRODE SPACING: 100M  
 Normalised Chargeability  
 PSEUDOSECTIONS  
 ML1650 "ONE MILE"  
 INDUCED POLARISATION SURVEY  
 COMPLETED BY CEC  
 JULY 1990

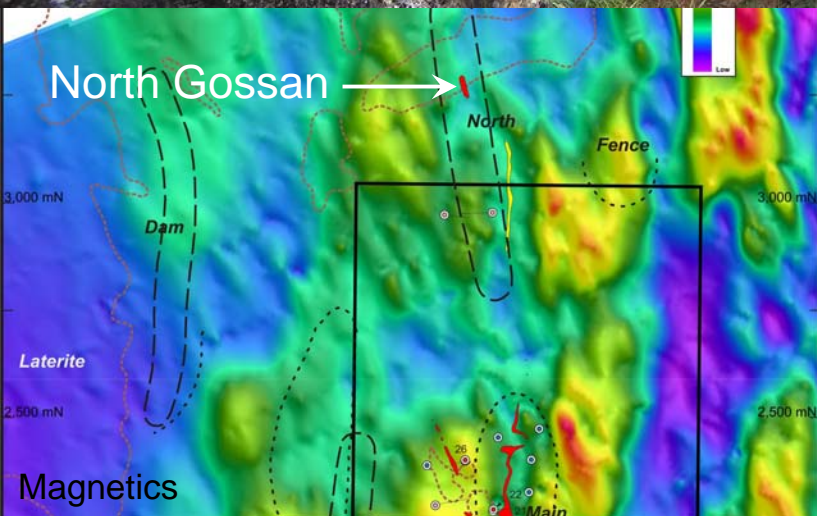


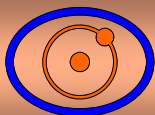
## North Gossan

- Large gossan outcrop after massive sulphides protruding from laterite indicates good potential in the North target area – not drilled

## North Gossan

- Close-up photograph of gossan outcrop





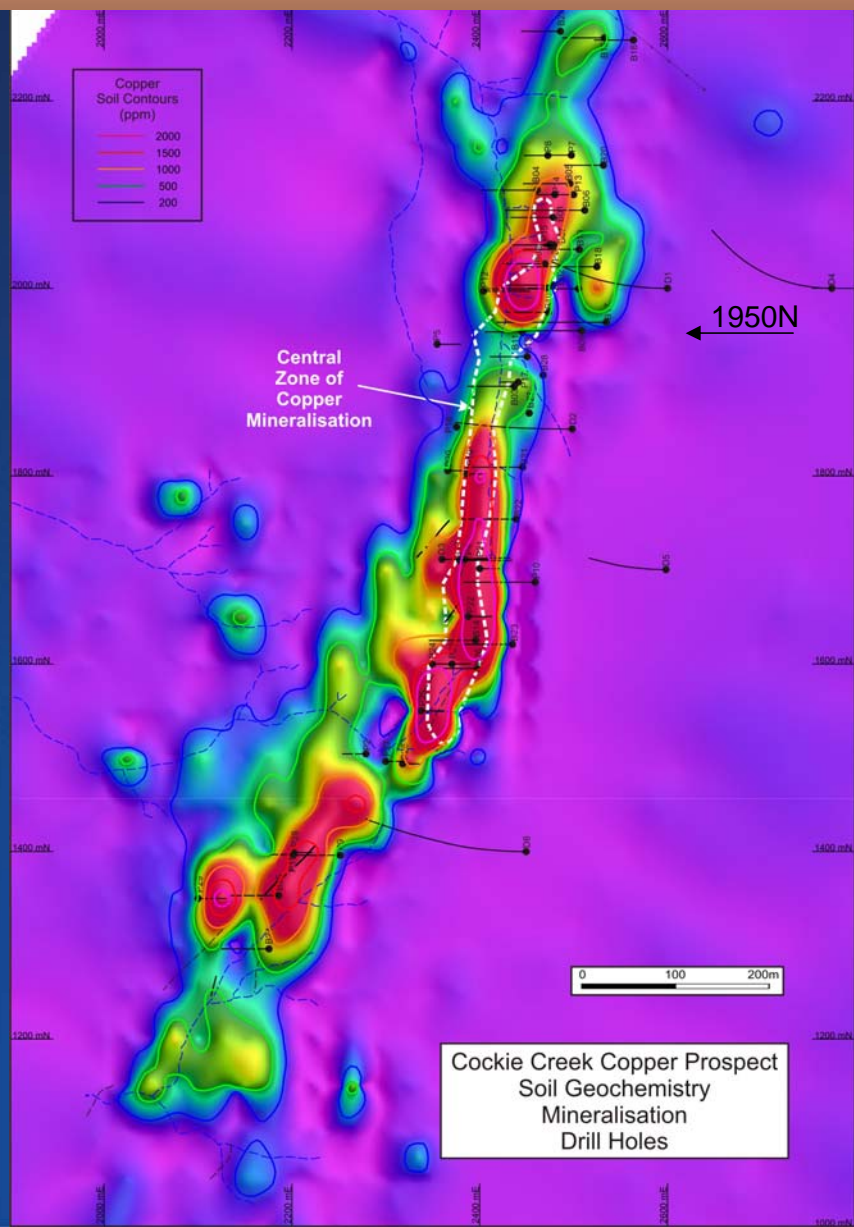
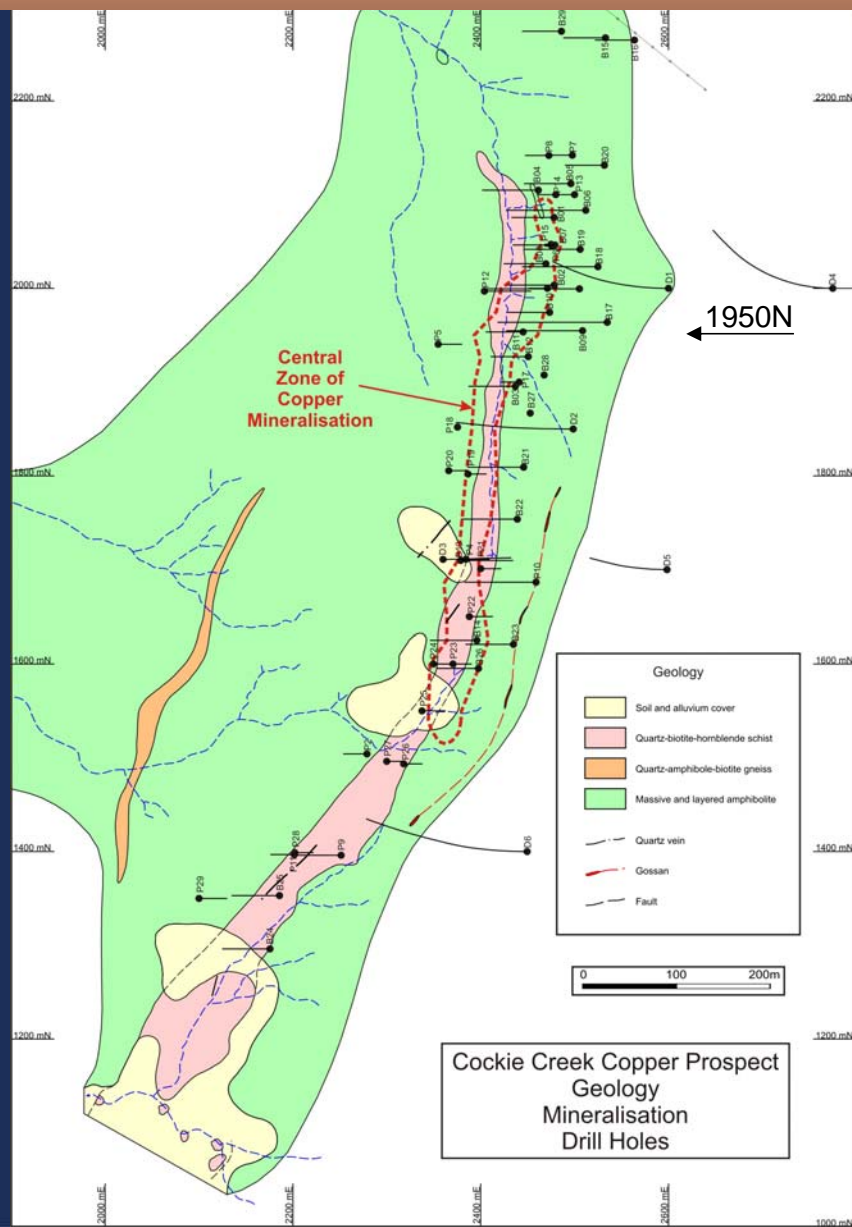
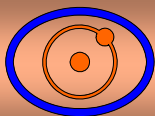
Hole	Easting MGA Z55	Northing MGA Z55	From (m)	To (m)	Length (m)	Cu (%)	Au (g/t)	Mo (ppm)
CRC002	267380	7904295	0	68	68	0.74	0.12	92
CRC009	267356	7904243	66	163	97	0.48	0.07	114
CRC010	267353	7904283	11	85	74	0.42	0.08	78
CRC011	267320	7904295	1	80	79	0.45	0.06	76
CRC014	267019	7904155	15	56	41	0.50	0.10	48
CRC017	267378	7904226	121	215	94	0.53	0.08	99
CRC023	267037	7904120	53	141	88	0.43	0.06	49
CRC026	266995	7904137	11	84	73	0.44	0.05	22
D1	267448	7904183	180	216	36	0.57	0.10	28
D3	267075	7904227	56	104	48	0.48	0.10	94
P11	267403	7904244	50	108	58	0.64	0.07	-
P12	267339	7904345	50	100	50	0.44	0.07	-
P16	267370	7904307	0	40	40	0.75	0.13	-

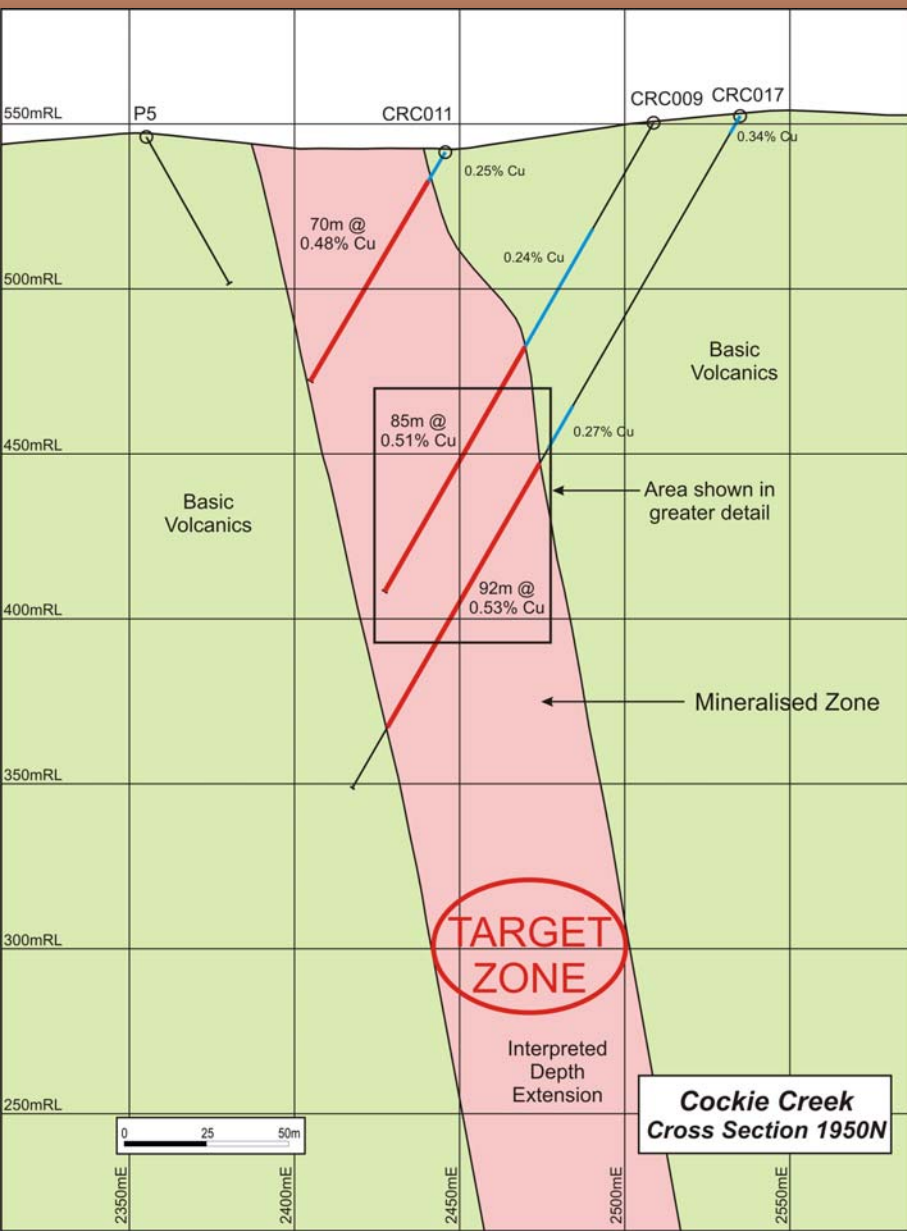
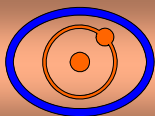
## Drill Hole Intersections

## Cockie Creek Porphyry Copper Prospect

Located 5km northeast of One Mile





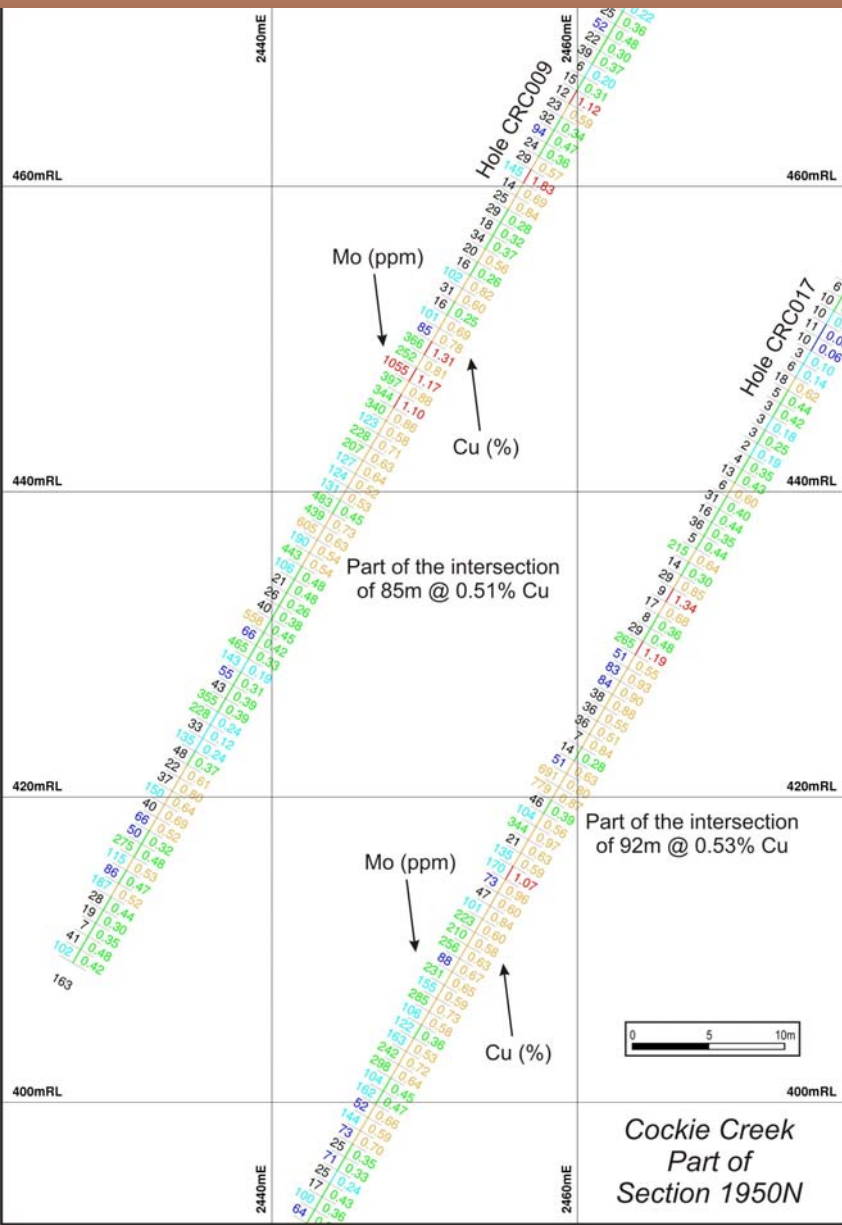
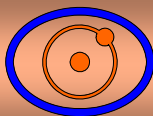


## Summary

- High order soil copper anomaly
- Zone of disseminated copper mineralisation
- Good continuity with true widths to 60m
- Inferred resource 13Mt @ 0.42% Cu
- Associated gold and molybdenum
- Potential at depth and along strike
- Porphyry copper or footwall VMS mineralisation
- Best target at depth below thickened areas

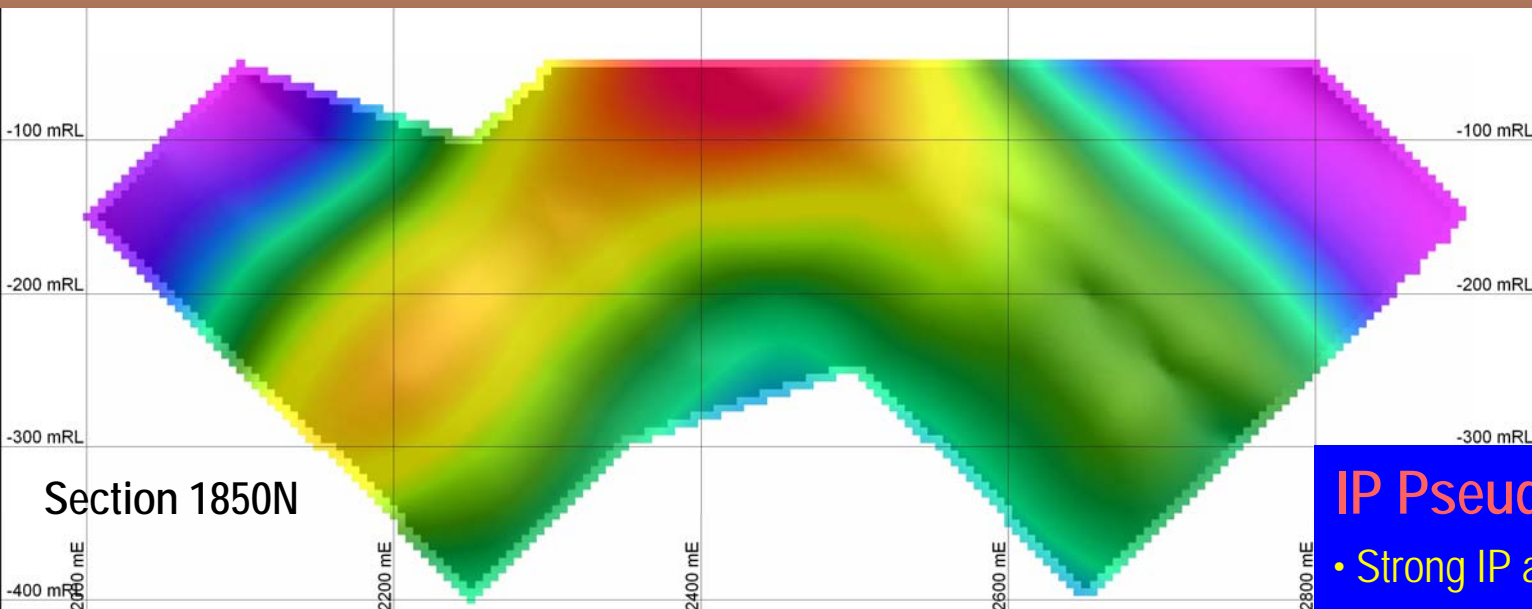
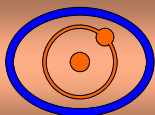


Surface Copper Mineralisation at 1950N



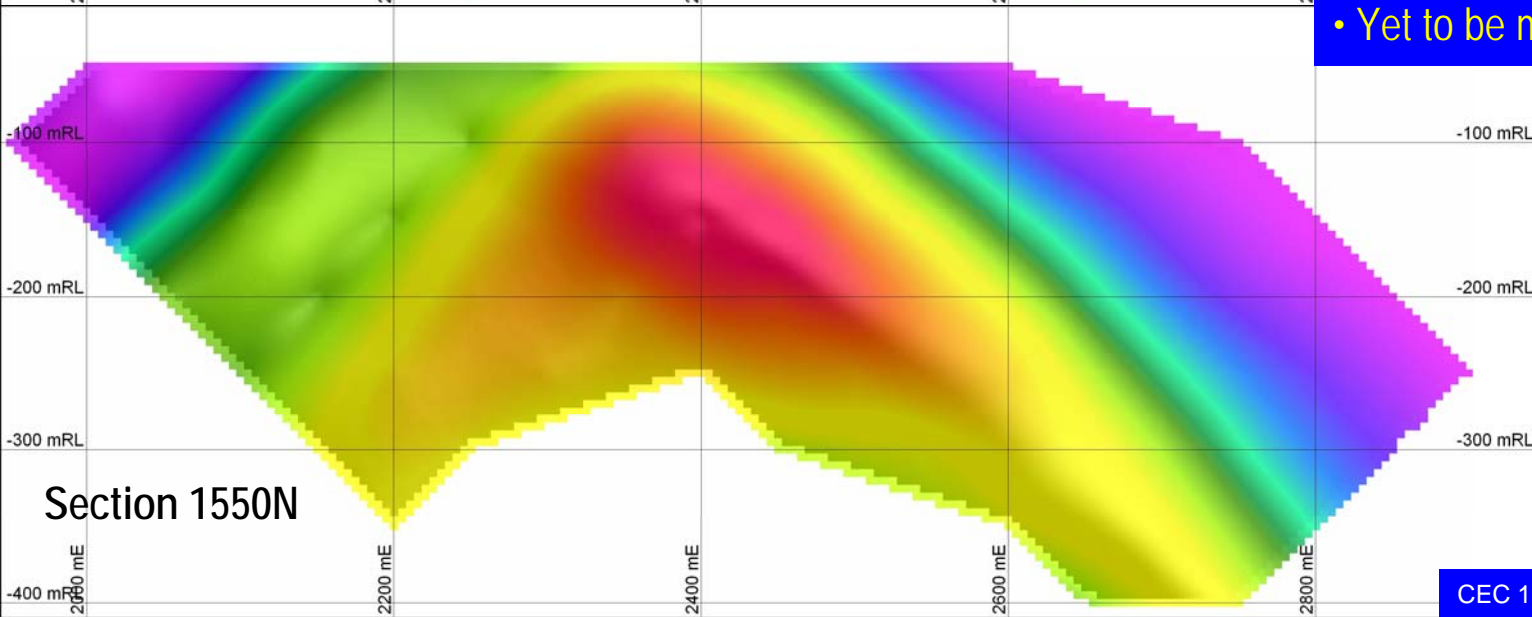
## Assay Section 1950N Details

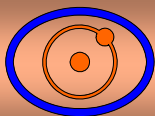
- Primary chalcopyrite copper mineralisation
- Wide consistent zone of copper
- Some copper grades over 1%
- Patchy molybdenum but significant in places
- Deeper drilling planned on this section to cover possibility that the copper mineralisation may improve at depth



## IP Pseudo-sections

- Strong IP anomalies
- Yet to be modelled





## One Mile

Substantial massive sulphide body indicating VMS potential of area.  
A number of geophysical targets in area surrounding the sulphide body.  
Target is high grade copper in a VMS deposit.

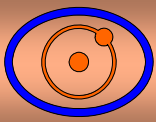
## Cockie Creek

Existing inferred resource of 13Mt @ 0.42% copper in wide copper zone.  
Good potential for higher grade copper at depth below the resource.  
Good potential for additional copper mineralisation along strike to south and associated with other soil anomalies.

## Cassidy Creek

Six kilometre strike of quartz gahnite (zinc spinel) lode zone with lead to 24%.  
Potential for either Broken Hill type deposit or VMS deposit.

**Superior has a strong position in an area with excellent potential for a significant discovery**



Superior Resources Limited

**Greenvale Project**

*Thank You*