

## ASX/MEDIA RELEASE

19 June 2013

## DRILLING COMMENCES AT TEENA ZINC PROSPECT

### Highlights

- **Diamond drilling commences at Teena zinc prospect in Northern Territory**
- **Follow up drilling of previous highly encouraging results**

Rox Resources Limited (**ASX: RXL**) ("**Rox**" or "**the Company**") is pleased to advise that RC/diamond drilling has commenced at the Teena prospect, part of the Reward zinc project, in the Northern Territory (Figure 1). The project is subject to an Earn-in Agreement with Teck Australia Pty Ltd who is funding all drilling and other exploration costs.

The RC/diamond drilling program will consist of approximately 4,500m (including RC pre-collars) in up to six holes to test both the vertical and areal extent of previously identified zinc mineralisation at Teena, as reported on 14 August 2012, including:

- **11.3 metres grading 10.9% Zn + Pb, 14 g/t Ag** from 908.8 metres in hole Teena 4
- **8.6 metres grading 9.84% Zn + Pb, 23 g/t Ag** from 789.6 metres in hole Teena 4A
- **3.8 metres grading 7.98% Zn + Pb, 4 g/t Ag** from 629.2 metres in hole Teena 2
- **13.1 metres grading 6.02% Zn + Pb, 5 g/t Ag** from 599.2 metres in hole Teena 6

Rox Managing Director Ian Mulholland commented, *"This is an exciting time for the Company, with the field season in northern Australia now in full swing and some important follow-up drilling on the exciting Teena prospect now underway. Teck are going to drill a number of diamond core holes into the Teena Basin and we expect to intercept the target horizon in about 3 to 4 weeks' time"*.

**ENDS****For more information:****Shareholders**

Ian Mulholland  
Managing Director  
Tel: +61 8 9226 0044  
[admin@roxresources.com.au](mailto:admin@roxresources.com.au)

**Media**

Tony Dawe / Belinda Newman  
Professional Public Relations  
Tel: + 61 8 9388 0944  
[tony.dawe@ppr.com.au](mailto:tony.dawe@ppr.com.au) /  
[belinda.newman@ppr.com.au](mailto:belinda.newman@ppr.com.au)



Figure 1: Project Location

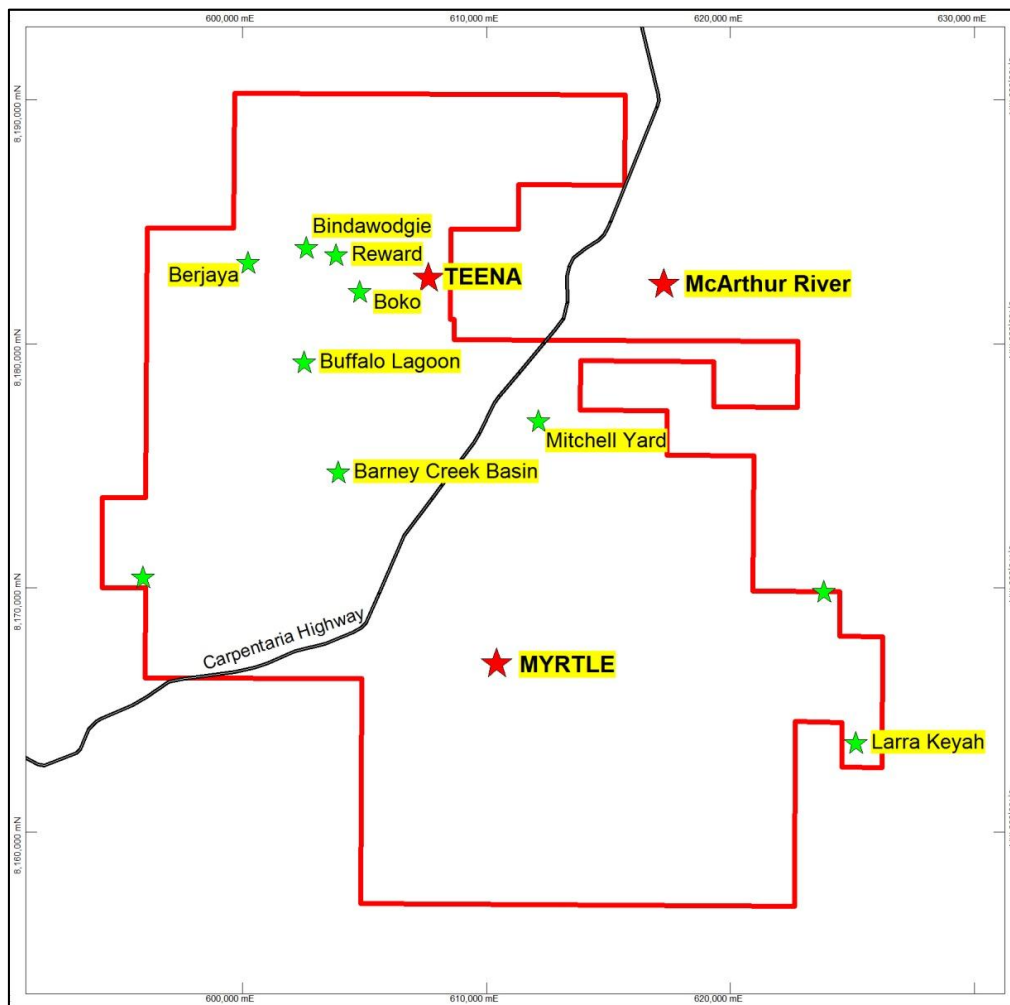


Figure 2: Tenement and Prospect Map

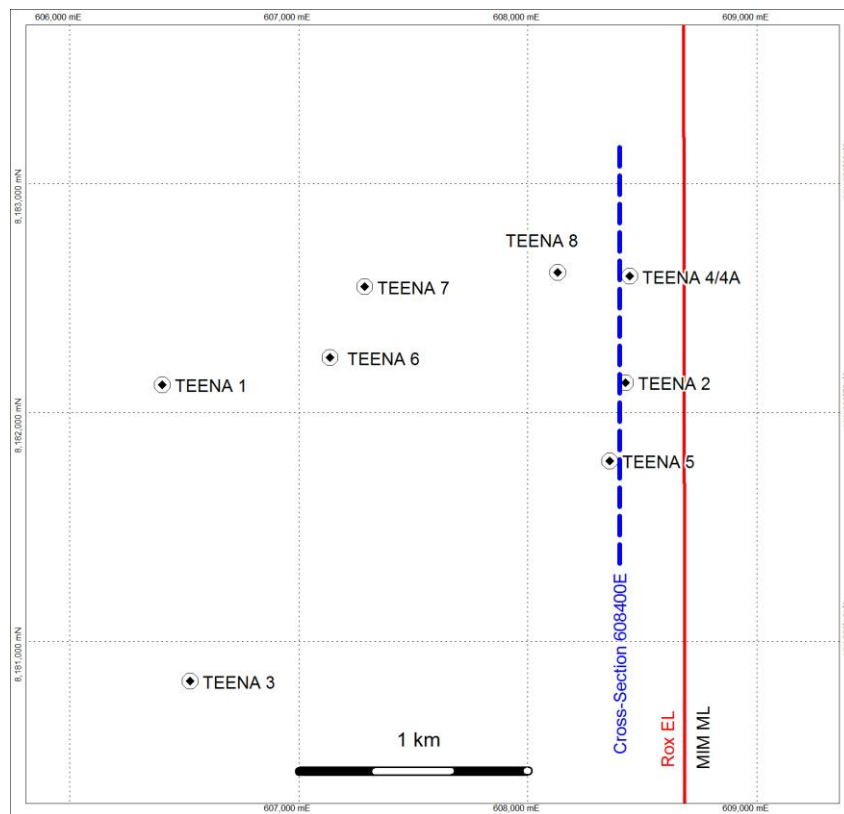


Figure 3: Teena Drill Hole Locations. Teena 2 and Teena 6 are 1.2km apart

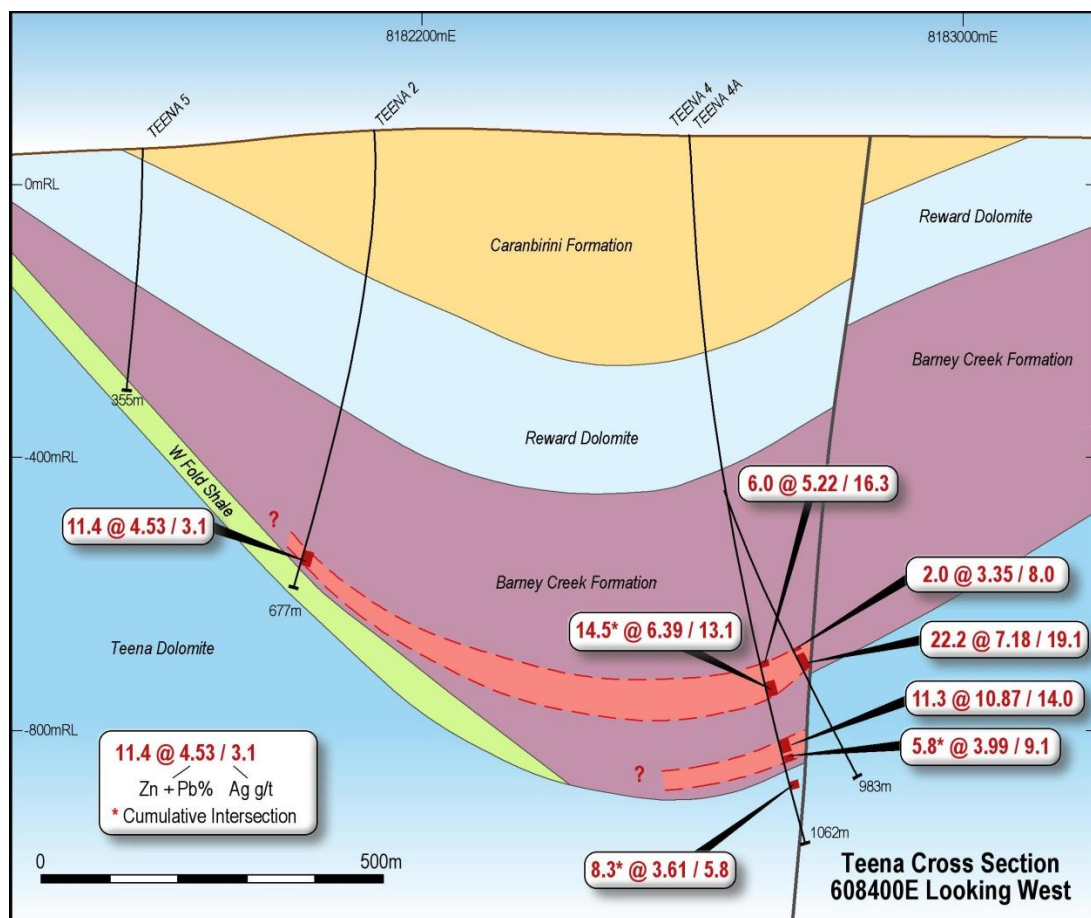
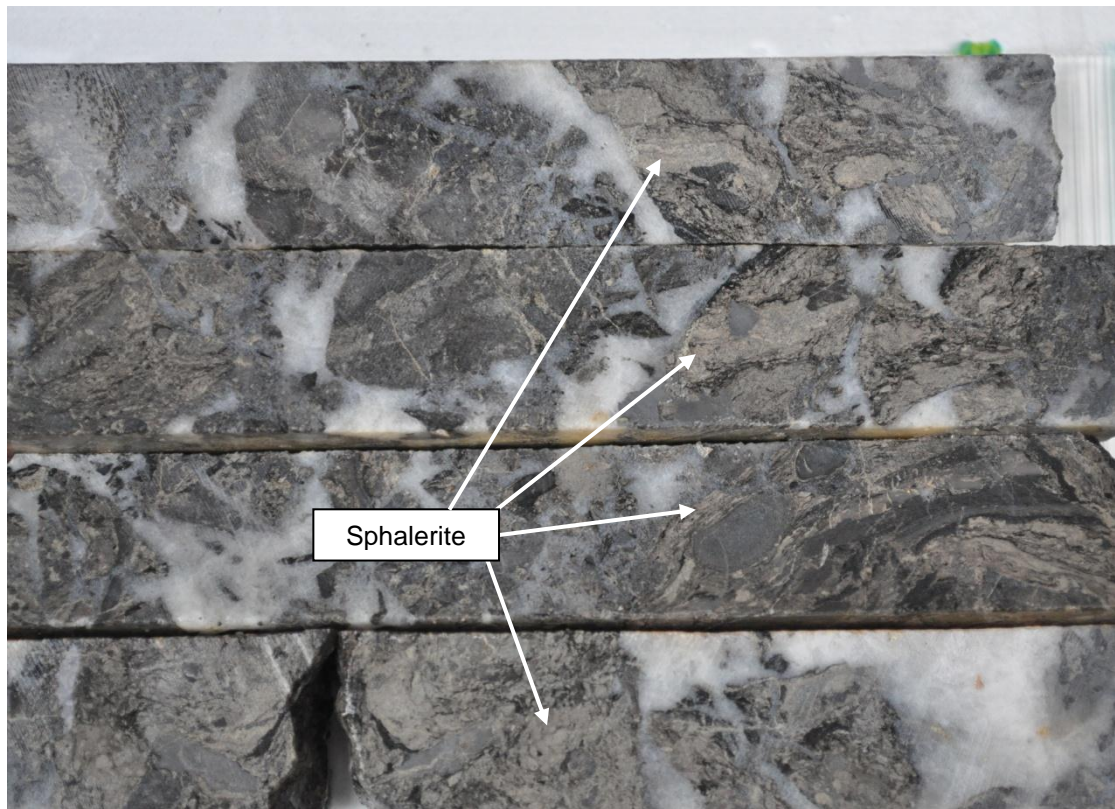
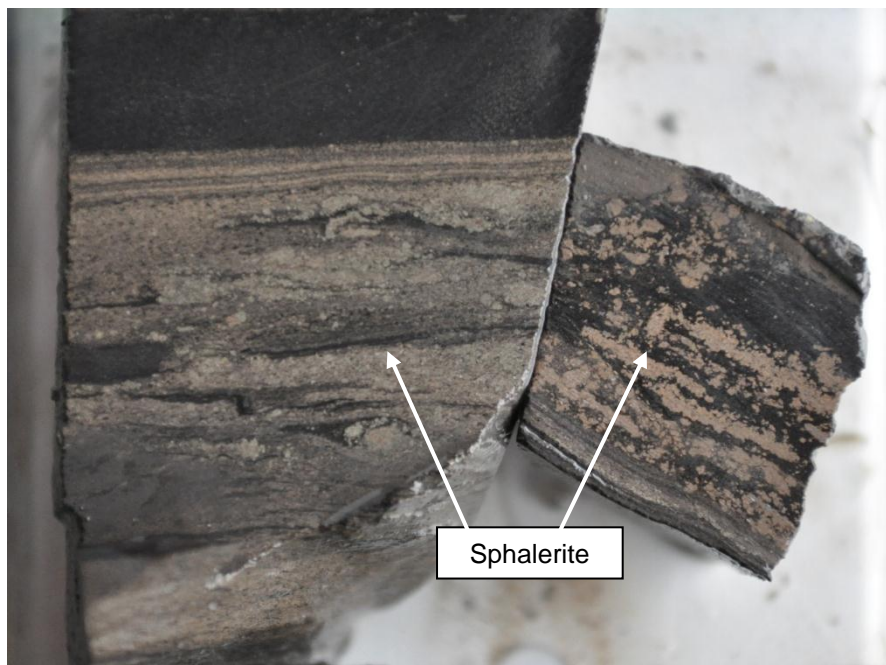


Figure 4: Rox's Interpreted Teena Cross-Section



*Figure 5: Teena 4, ~917 metres, sphalerite ZnS (light creamy colour)*



*Figure 6: Teena 6, ~600 metres, laminated/bedded sphalerite ZnS*

Table 1: Teena Drill Assays

Hole	From (m)	To (m)	Interval (m)	Ag (ppm)	Pb (%)	Zn (%)	Zn+Pb (%)
TEENA 2	629.20	640.60	11.40	3.1	0.53	4.00	4.53
<i>incl.</i>	629.20	633.00	<b>3.80</b>	<b>3.6</b>	<b>1.10</b>	<b>6.89</b>	<b>7.98</b>
<i>incl.</i>	639.60	640.60	1.00	6.6	0.36	5.24	5.60
TEENA 4	782.10	788.10	6.00	16.3	2.99	2.23	5.22
TEENA 4	791.50	793.00	1.50	12.4	2.03	3.07	5.10
TEENA 4 <sup>1</sup>	812.80	818.60	5.80	11.0	3.01	3.33	6.33
TEENA 4 <sup>1</sup>	821.60	825.80	4.20	12.1	0.79	2.69	3.49
TEENA 4 <sup>1</sup>	827.90	829.90	<b>2.00</b>	<b>17.2</b>	<b>2.79</b>	<b>9.10</b>	<b>11.89</b>
TEENA 4 <sup>1</sup>	832.30	834.80	2.50	16.2	3.14	3.84	6.98
TEENA 4	908.80	920.10	<b>11.30</b>	<b>14.0</b>	<b>0.14</b>	<b>10.73</b>	<b>10.87</b>
TEENA 4 <sup>2</sup>	927.70	929.90	2.20	7.0	0.03	3.14	3.17
TEENA 4 <sup>2</sup>	932.20	935.80	3.60	10.4	0.03	4.46	4.49
<i>incl.</i>	934.30	935.80	1.50	9.0	0.04	7.10	7.14
TEENA 4 <sup>3</sup>	966.60	970.40	3.80	6.7	0.04	3.99	4.03
TEENA 4 <sup>3</sup>	973.80	978.30	4.50	5.0	0.03	3.22	3.25
TEENA 4A*	760.80	762.30	1.50	8.0	0.07	5.16	5.23
TEENA 4A*	781.00	783.00	2.00	8.0	2.17	1.18	3.35
TEENA 4A*	789.60	811.80	22.20	19.1	1.10	6.08	7.18
<i>incl.</i>	789.60	798.20	<b>8.60</b>	<b>22.5</b>	<b>2.70</b>	<b>7.14</b>	<b>9.84</b>
<i>incl.</i>	800.70	810.30	9.60	17.6	0.07	6.46	6.53
TEENA 4A*	816.10	817.20	<b>1.10</b>	<b>12.0</b>	<b>0.23</b>	<b>7.90</b>	<b>8.13</b>
TEENA 6	599.20	614.00	14.80	4.4	0.80	4.86	5.66
TEENA 6	620.60	629.20	8.60	2.5	0.43	3.76	4.20
<i>incl.</i>	622.30	623.30	<b>1.00</b>	<b>12.0</b>	<b>2.80</b>	<b>16.00</b>	<b>18.80</b>
TEENA 6	641.40	643.80	2.40	4.8	0.52	2.08	2.60
TEENA 7	450.30	458.20	7.90	-	0.34	4.41	4.75
<i>incl.</i>	454.70	456.00	<b>1.30</b>	-	<b>1.33</b>	<b>11.10</b>	<b>12.43</b>
TEENA 7	471.70	477.00	5.30	-	0.28	2.70	2.98
TEENA 7	485.70	488.00	2.30	-	0.10	4.07	4.17
TEENA 8	617.00	620.40	3.40	20.6	2.64	0.73	3.37

Data listed using a lower cut-off of 3% Zn+Pb, with a minimum thickness of 1 metre, and a maximum internal gap of 2 metres. Higher grade inclusions (viz. shown as "incl.") are at a lower cut-off of 5% Zn+Pb, with a minimum thickness of 1 metre, and a maximum internal gap of 2 metres.

<sup>1</sup> Cumulative intersection is 14.5m @ 6.39% Zn+Pb, 13.1 g/tAg

<sup>2</sup> Cumulative intersection is 5.8m @ 3.99 Zn+Pb, 9.1 g/tAg

<sup>3</sup> Cumulative intersection is 8.3m @ 3.61 Zn+Pb, 5.8 g/tAg

\* Hole Teena 4A was wedged off hole Teena 4 at approximately 490 metres depth.



## About Rox Resources

Rox Resources Limited is an emerging Australian minerals exploration company. The company has four key assets at various levels of development with exposure to gold, nickel, zinc, lead, copper and phosphate, including the Mt Fisher Gold Project (WA), Myrtle/Reward Zinc-Lead Project (NT), the Bonya Copper Project (NT) and the Marqua Phosphate Project (NT).

### Mt Fisher Gold-Nickel Project (100% + Option to Purchase)

The Mt Fisher gold project is located in the highly prospective North Eastern Goldfields region of Western Australia and in addition to being well endowed with gold the project hosts a strong potential for nickel. The total project area is 655km<sup>2</sup>, consisting of a 485km<sup>2</sup> area 100% owned by Rox and an Option to purchase 100% of a further 170km<sup>2</sup>.

Initial drilling by Rox has defined numerous high-grade targets and defined a Measured, Indicated and Inferred Mineral Resource of **973,000 tonnes grading 2.75 g/t gold** to be defined for 86,000 ounces of gold (Measured: 171,900 tonnes grading 4.11 g/t Au, Indicated: 204,900 tonnes grading 2.82 g/t Au, Inferred: 596,200 tonnes grading 2.34 g/t Au).

Drilling at the Camelwood nickel prospect has intersected **semi-massive to massive and disseminated nickel sulphide mineralisation** in a number of holes along an 800m strike length and up to 350m depth, including **11.4m @ 2.9% Ni** and **6.15m @ 3.3% Ni**, with the mineralisation open in all directions.

### Reward Zinc-Lead Project (Farm-out Agreement)

Rox has signed an Earn-In and Joint Venture Agreement with Teck Australia Pty Ltd. ("Teck") to explore its 670km<sup>2</sup> Myrtle/Reward zinc-lead tenements, located 700km south-east of Darwin, Northern Territory. The Myrtle deposit has a current JORC Inferred Mineral Resource of **43.6 Mt @ 5.04% Zn+Pb** (Indicated: 5.8 Mt @ 3.56% Zn, 0.90% Pb; Inferred: 37.8 Mt @ 4.17% Zn, 0.95% Pb). Historic drill intercepts of sediment- and fault-hosted mineralisation exist at the Teena prospect, including **11.3m @ 10.9% Zn+Pb** and **8.6m @ 9.84% Zn+Pb**. Under the terms of the agreement, Teck have an option to spend A\$5m by 31 August 2014 to earn an initial 51% interest. Teck can increase its interest in the project to 70% by spending an additional A\$10m (A\$15m in total) by 31 August 2018.

### Bonya Copper Project (Farm-in Agreement to earn up to 70%)

In October 2012 Rox signed a Farm-in Agreement with Arafura Resources Limited to explore the Bonya Copper Project located 350km east of Alice Springs, Northern Territory. Outcrops of visible copper grading up to 34% Cu and 27 g/t Ag are present. Under the agreement, Rox can earn a 51% interest in the copper, lead, zinc, silver, gold, bismuth and PGE mineral rights by spending \$500,000 within the first two years. Rox can elect to earn a further 19% (for 70% in total) by spending a further \$1 million over a further two years. Once Rox has earned either a 51% or 70% interest it can form a joint venture with Arafura to further explore and develop the area.

### Marqua Phosphate Project (100%)

Rox owns four tenements covering approximately 1,900 km<sup>2</sup> in the Northern Territory which comprise the Marqua Phosphate project. The project has the potential for a sizeable phosphate resource to be present, with surface sampling returning values up to 39.4% P<sub>2</sub>O<sub>5</sub> and drilling (including 6m @ 19.9% P<sub>2</sub>O<sub>5</sub> and 5m @ 23.7% P<sub>2</sub>O<sub>5</sub>) confirming a 30km strike length of phosphate bearing rocks. In addition to phosphate, there is also potential for lead-zinc mineralisation. The project is located 300km south-west of Mt Isa, and is situated 250km from the nearest railhead and gas pipeline at Phosphate Hill.

### Competent Person Statement:

*The information in this report that relates to Exploration Results and Mineral Resources is based on information compiled by Mr Ian Mulholland BSc (Hons), MSc, FAusIMM, FAIG, FSEG, MAICD, who is a Fellow of The Australasian Institute of Mining and Metallurgy and a Fellow of the Australian Institute of Geoscientists. Mr Mulholland has sufficient experience which is relevant to the style of mineralisation and type of deposit under consideration, and to the activity which he is undertaking to qualify as a Competent Person as defined in the 2004 Edition of the "Australasian Code for Reporting of Exploration Results, Mineral Resources and Ore Reserves". Mr Mulholland is a full time employee of the Company and consents to the inclusion in the report of the matters based on his information in the form and context in which it appears.*