



Traka Resources Limited

ABN: 63 103 323 173

25 October 2013

Company Announcements Office
ASX Limited
Level 4, 20 Bridge Street
SYDNEY NSW 2000

Dear Sir/Madam

INVESTOR PRESENTATION

Attached is a copy of a presentation on the company's activities to be made to investors.

Yours faithfully

P C Ruttledge
Company Secretary

Investor Presentation

PATRICK VERBEEK
MANAGING DIRECTOR
OCTOBER 2013



TRAKA RESOURCES LIMITED



Disclaimer

This presentation has been prepared by **Traka Resources Limited** ABN 63 103 323 173 (**Traka**) for the sole purpose of providing financial, operational and other information to enable recipients to review the business activities of Traka. This presentation is not intended as an offer, invitation, solicitation or recommendation with respect to the purchase or sale of any securities. Nothing in this presentation should be construed as financial product advice, whether personal or general, for the purposes of Section 766B of the *Corporations Act 2001*.

This presentation may contain forward looking information, statements or forecasts that are subject to risks and other factors outside the control of **Traka**. Any forward looking information, statements or forecasts provided is/are considered reasonable in the circumstances and has/have been prepared in good faith and with all due care, but may differ materially from actual future results and performance. **Traka** and its affiliates, any of its directors, agents, officers or employees do not make any representation or warranty, express or implied, as to or endorsement of the accuracy or completeness of any information, statements or forecasts contained in this presentation, and they do not accept any liability for any statements made in, or omitted from, this presentation.

This presentation should not be relied upon as a representation of any matter that an investor should consider in evaluating the business activities of **Traka**. Investors must make and rely upon their own enquiries and due diligence in relation to the subject of this presentation and an investment in **Traka**. A potential investor must assess the merits or otherwise of an investment in **Traka** having regard to their own personal, financial and other circumstances.

The information in this presentation that relates to exploration results is based on information compiled by Mr Patrick Verbeek, the Managing Director of **Traka**. Mr Verbeek is a member of the Australasian Institute of Mining and Metallurgy and has sufficient experience which is relevant to the style of mineralisation under consideration and to the activity which he is undertaking to qualify as a Competent Person as defined in the 2004 edition of the “Australian Code for Reporting Exploration Results, Mineral Resources and Ore Reserves”. Mr Verbeek consents to the inclusion in the presentation of the matters based on information in the form and context in which it appears.

Information included in the presentation is dated 25 October 2013.

Directors & Capital Structure

DIRECTORS & MANAGEMENT

Long and successful resource industry experience

Patrick Verbeek - Managing Director

Neil Tomkinson - Non Exec Chairman

Joshua Pitt - Non Exec Director

George Petersons - Non Exec Director

CAPITAL STRUCTURE

Issued Shares 92,806,559

Total No. of Shareholders 544

Top 20 Shareholders 58.13%

Directors and Management Shareholding 24%

Market Cap @ 10 cents \$9.2 million

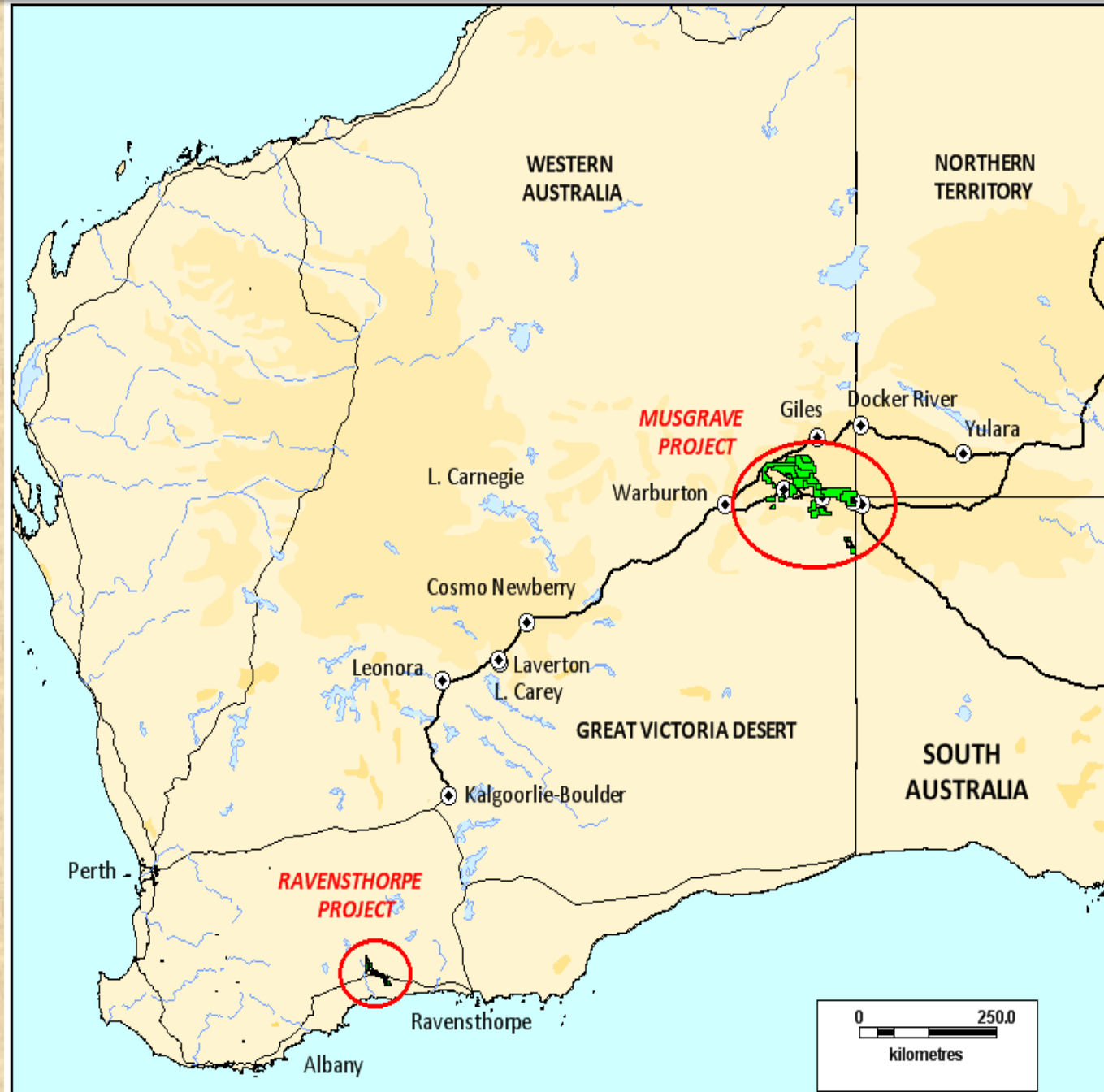
TRAKA RESOURCES LIMITED



Traka Project Locations

TRAKA

- 2 Project areas in Western Australia
- Musgrave Project – very large position in very prospective underexplored Proterozoic terrain
- Ravensthorpe - large position in Archean terrain
- Company focus on the Musgrave Project



October 2013 - Status and outlook

- 1. Western Areas JV - Drilling for massive sulphide Cu and Ni targets in Jameson area is imminent (late November/December)**
- 2. Primary target: Cu and Ni mineralised mafic “feeders” and structures like those on BHP Billiton abutting tenements**
 - the giant Babel Nebo Cu, Ni and PGE resource**
 - the new Cu discovery “Succoth” and others**
- 3. An important milestone reached - multiple targets identified will accelerate exploration throughout the Musgraves**
- 4. Traka has new targeting opportunities within its wholly owned tenements**
- 5. Positive results from neighbouring Phosphate/Anglo American JV tenements adds to regional impetus**
- 5. Critical mass now easier to achieve to enable resource development in the Musgraves**
- 6. Traka’s Musgrave portfolio is a key component**

Musgrave Project tenure

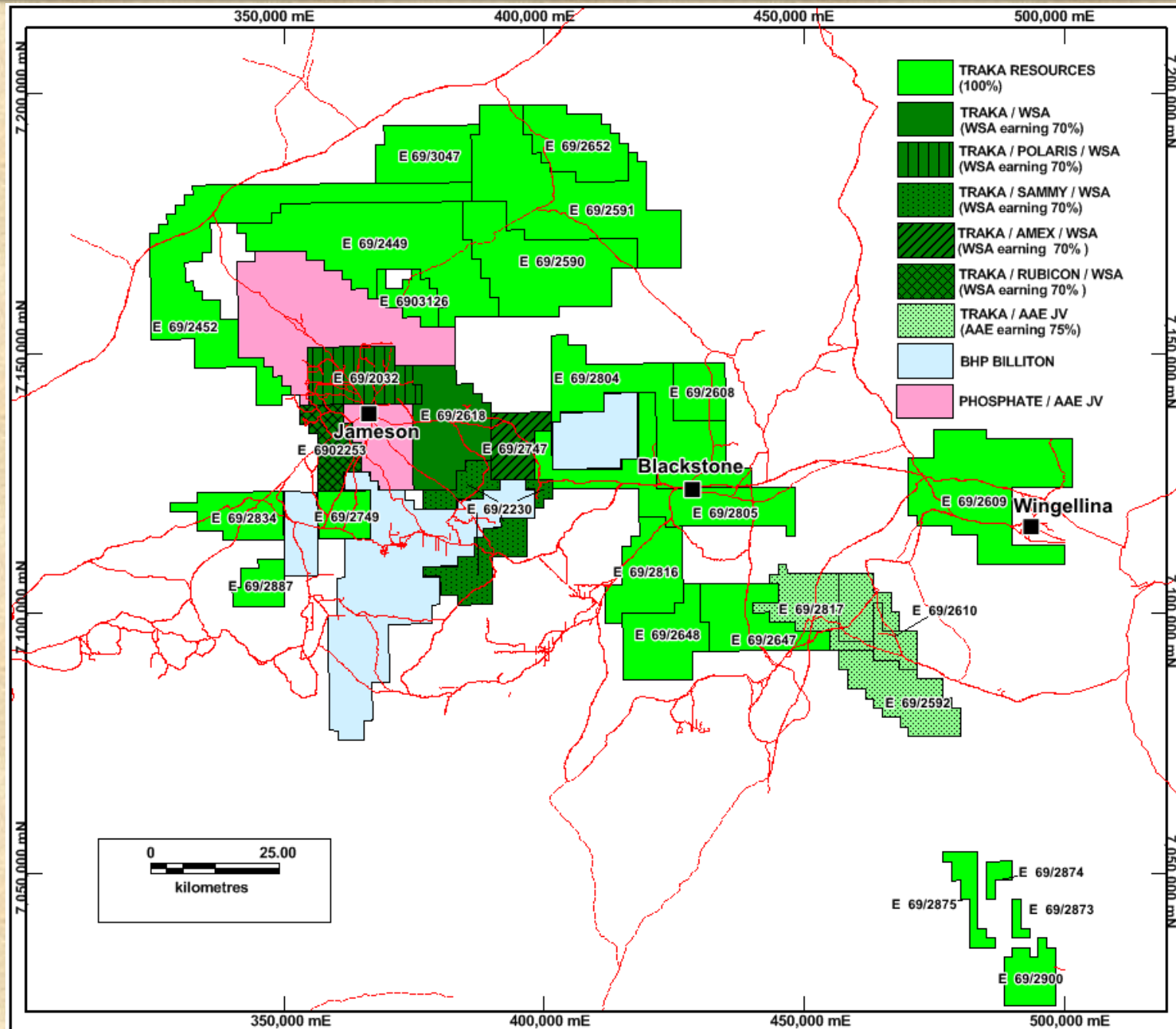
Traka has dominant
tenement holding
(39 tenements)

Western Areas Ltd
(WSA) Joint venture
5 tenements
Jameson area

Anglo American
(AAE) joint venture
3 tenements
Latitude Hill area

BHP Billiton
Very large Babel-
Nebo resource plus
new discoveries
"Succoth" and
others nearby

AAE/ Phosphate JV
Drilling on
Manchengo
prospect nearby



Proterozoic Terrain - Aeromagnetic Image

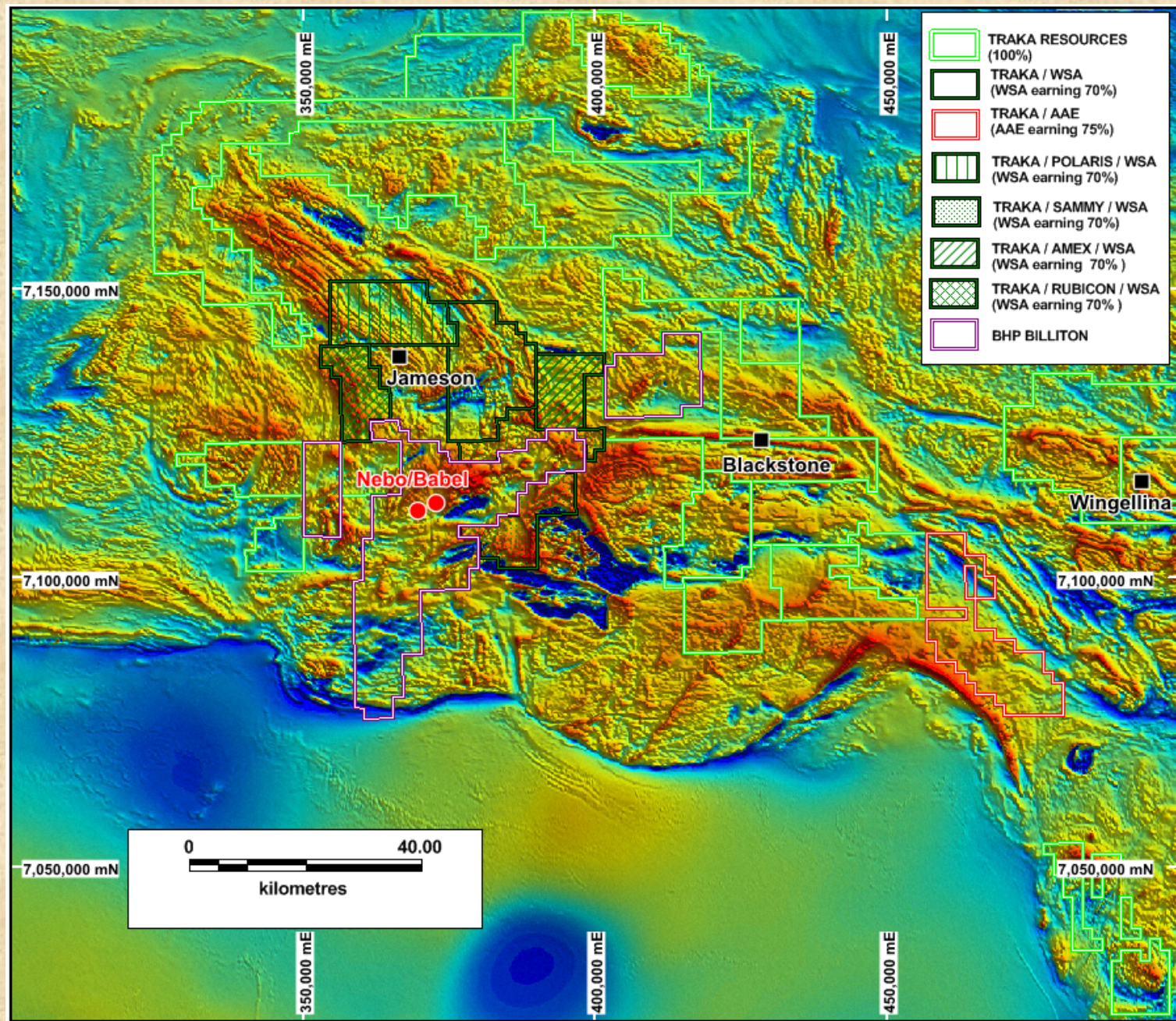
Very prospective
Proterozoic Terrain

Very limited historic
exploration but now
unprecedented level
of exploration activity

Good mineral
resource pedigree
- The Babel Nebo Cu
and Ni resource (BHP
Billiton)

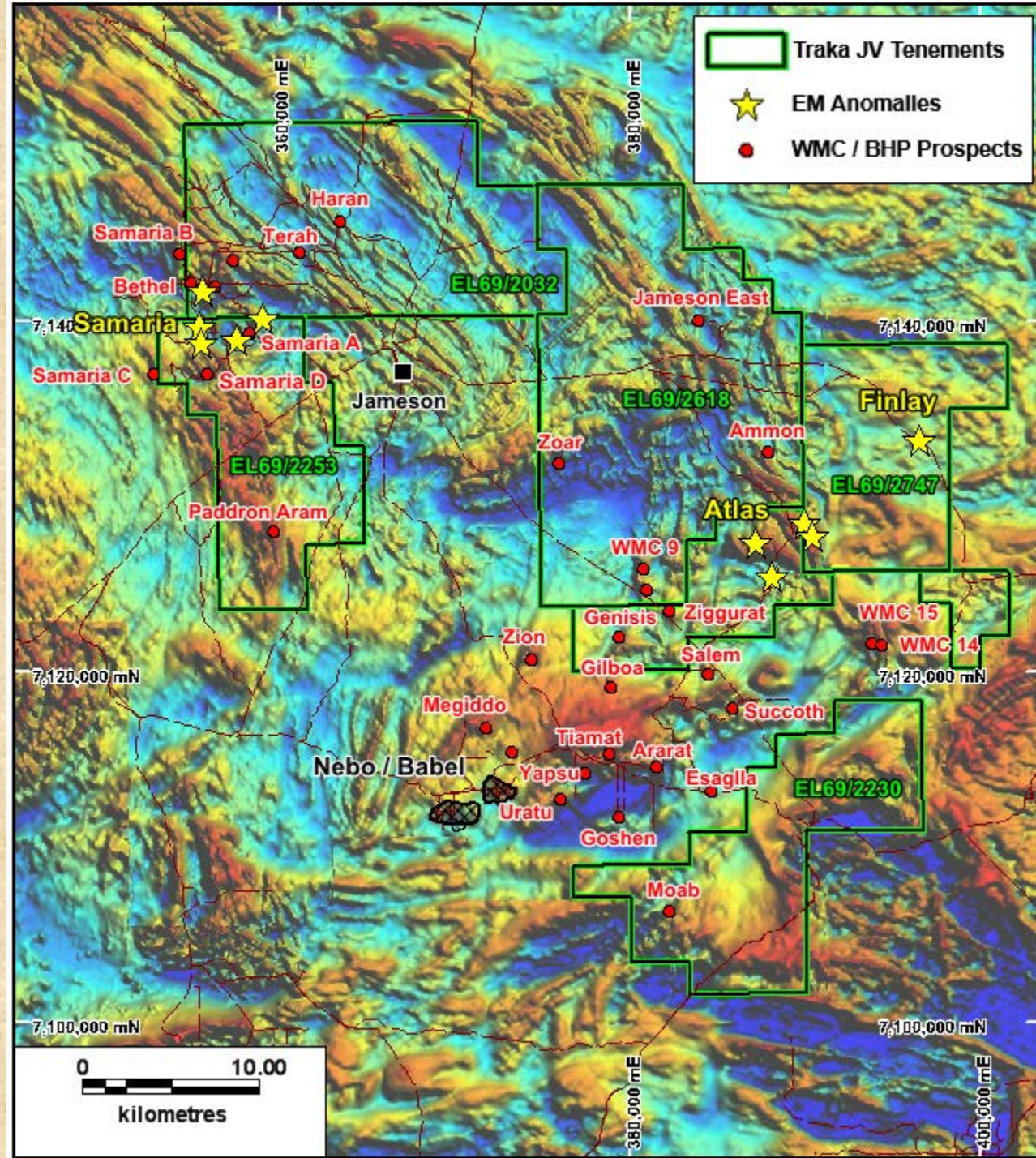
- Wingellina Ni
Laterite Resource
(MetalsX)

Critical mass now
easier to achieve



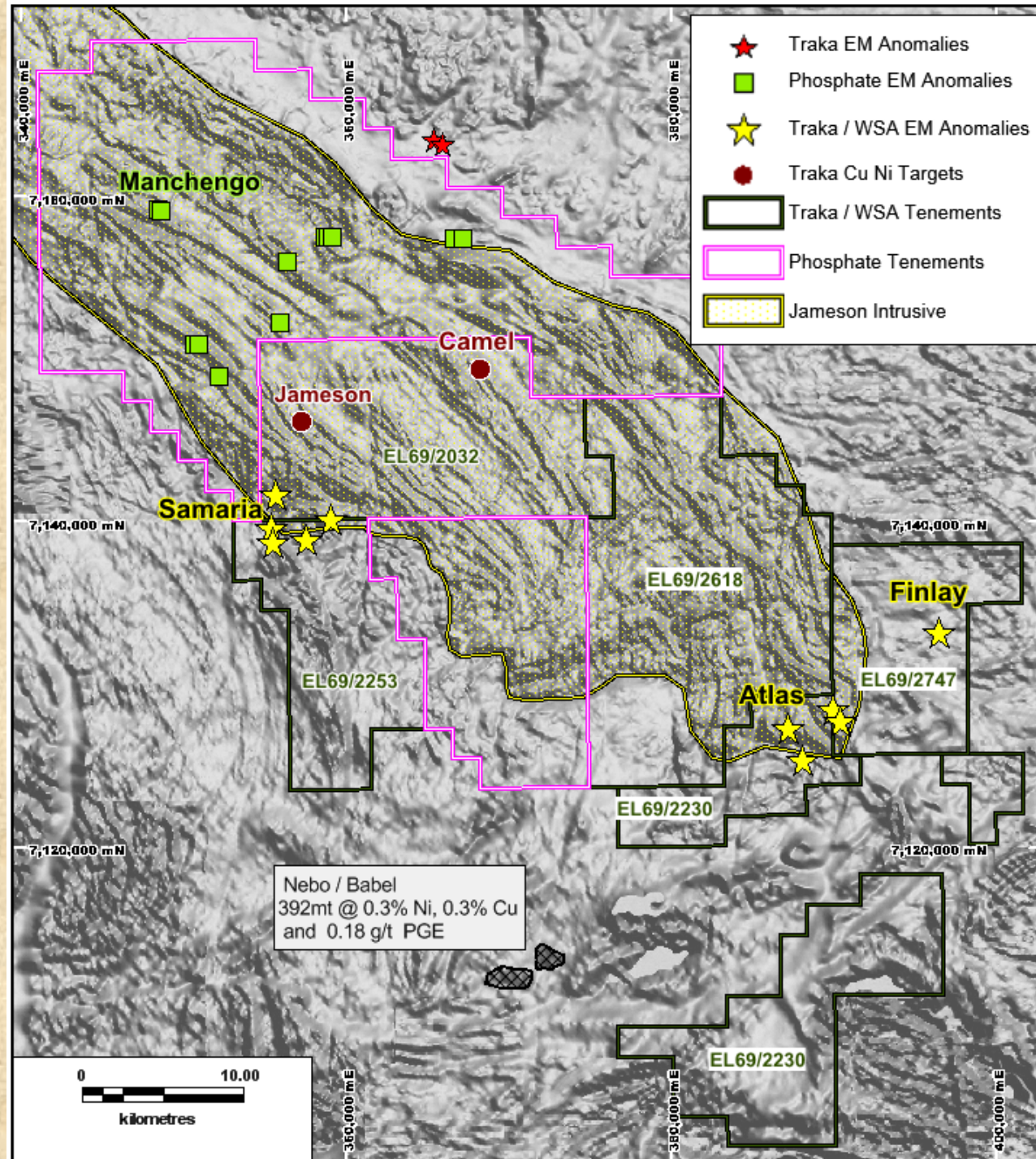
Jameson Area Exploration story

- Original WMC geochemical surveys and discovery - Babel-Nebo Drill hole **106.5 metres @ 2.4% Ni, 2.7% Cu and 0.2% PGE**
- Follow up BHP Billiton geophysics discoveries e.g. **Succoth- 200 metres @ 1.3% Cu**
- Traka/WSA geochemical and geophysical targets
- New WSA priority areas **ATLAS , SAMARIA and FINLAY**



HIGHLY PROSPECTIVE GEOLOGY

- Giles Intrusives - one of world's largest layered mafic/ultramafic terrains
- Targets within and peripheral to very large Jameson Intrusive
- Mineralised intrusives and structures detected by geophysics and geochemistry
- Permitting for drilling programs underway



Late stage mafic intrusive related – like Babel-Nebo

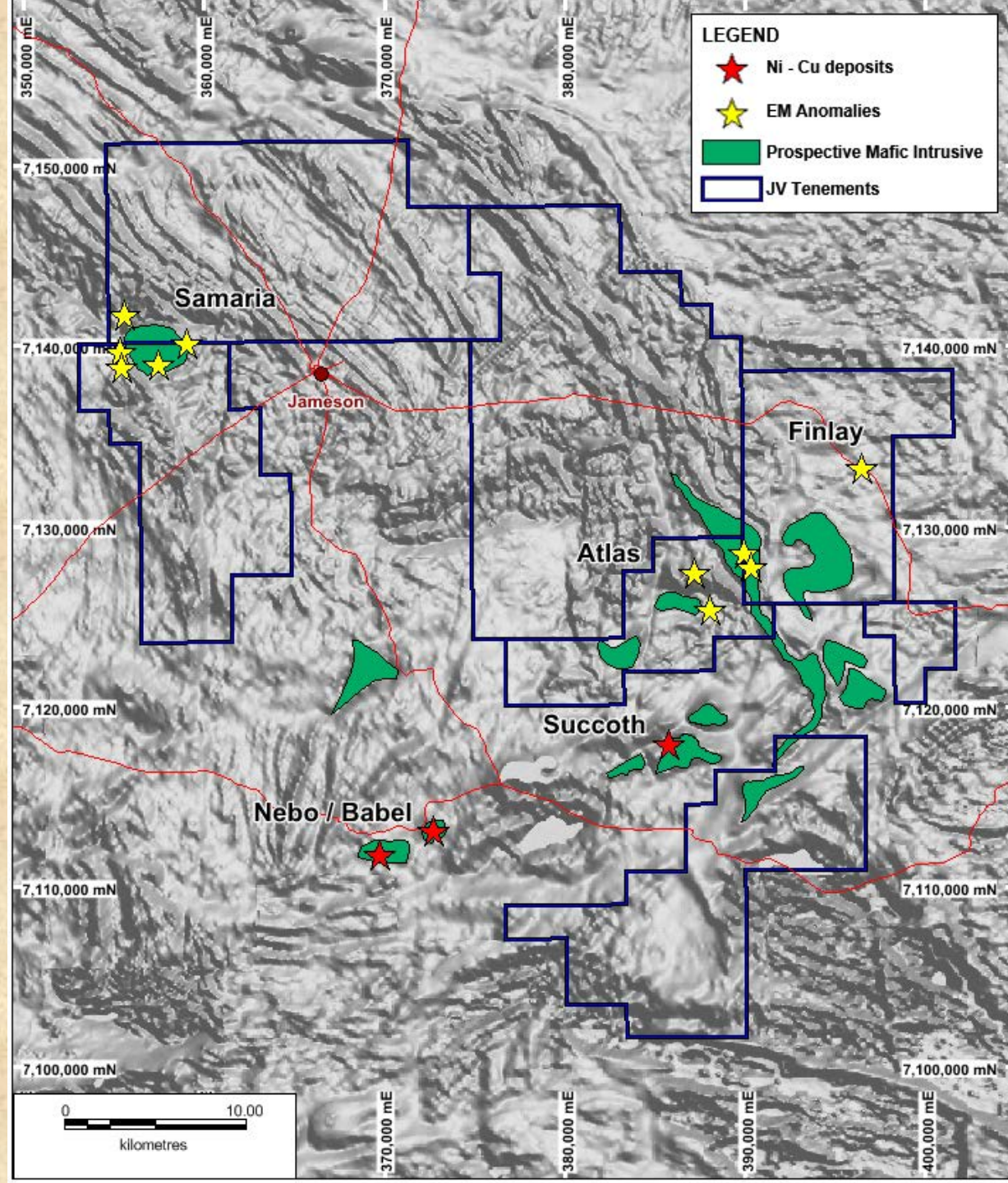
Smaller mineralised “feeders” under and into large layered Giles Intrusives

Important north-west structure in mafic host rocks: Babel-Nebo/Succoth/others in BHP Billiton tenement. Atlas area in Traka/WSA on trend

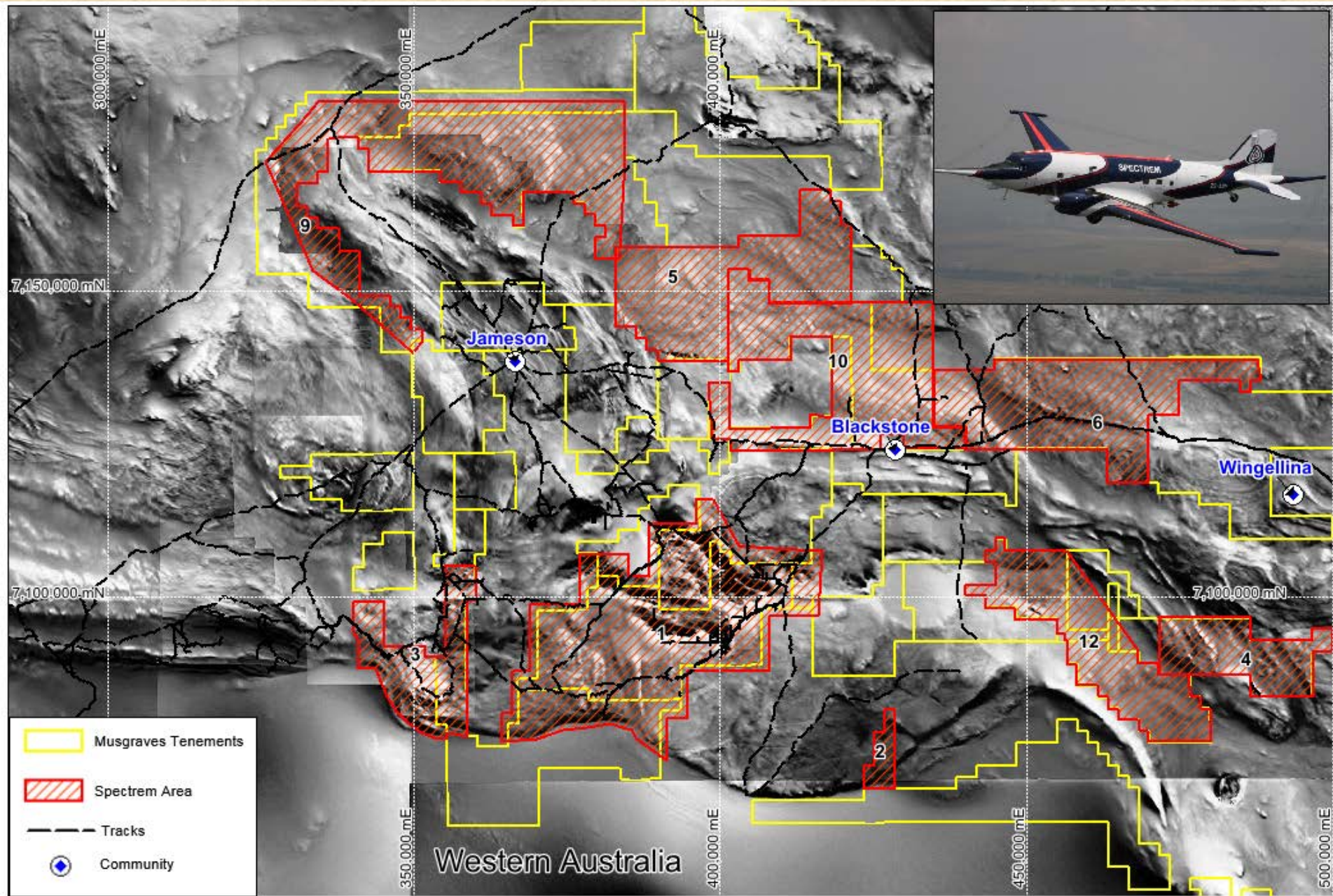
Finlay target on trend in gneissic rock sequence

Circular late stage intrusive stoping out older layered Jameson Intrusive

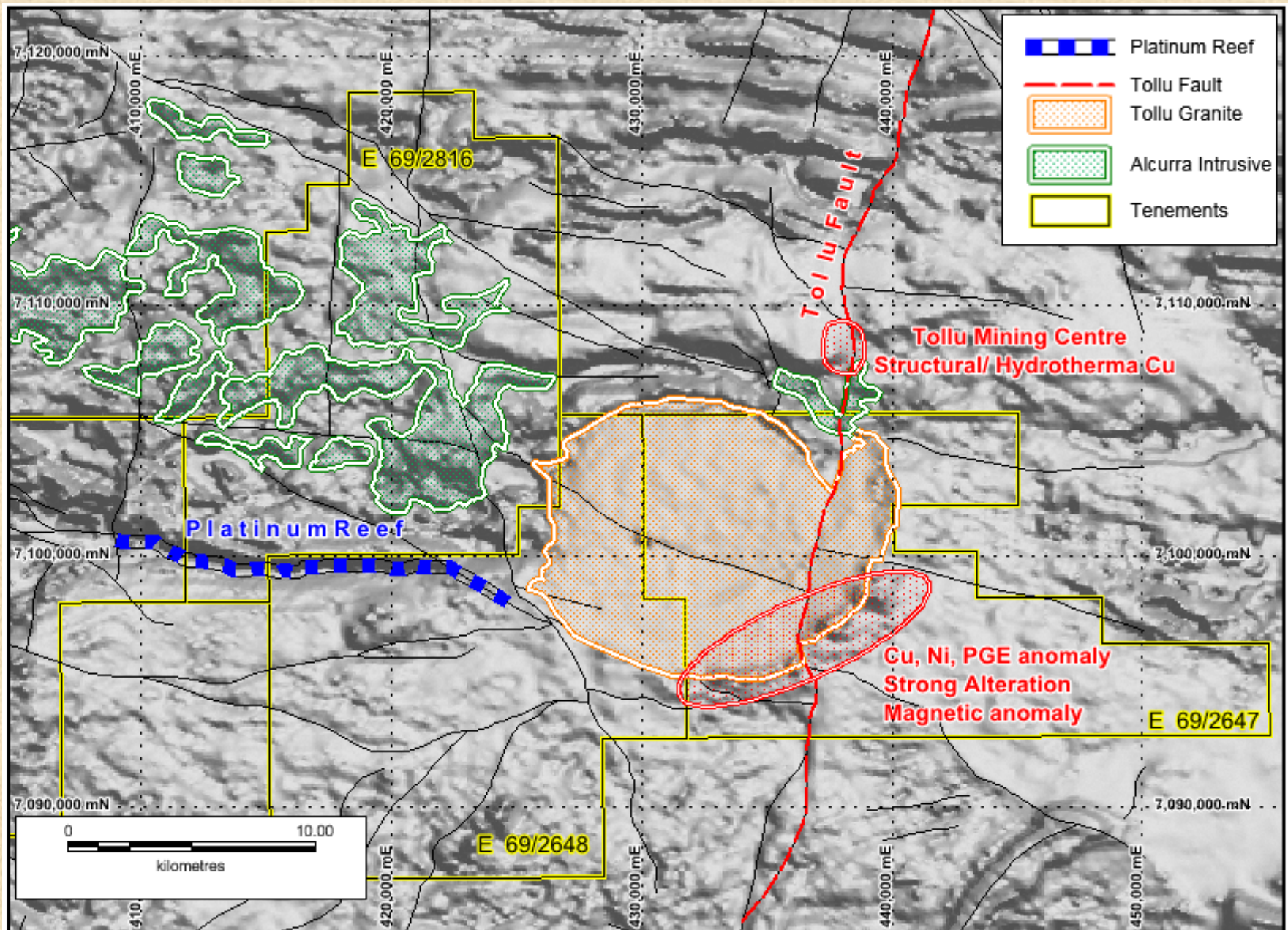
Samaria associated with circular late mafic intrusive



Musgrave Project – Anglo American Spectrem



Mt Morphett - Mineralised trends and multiple opportunities



Current Objectives

- **Maintain the Company's strategic position in the Musgraves**
- **Foster existing JV's and expand exploration activity as effectively as possible**
- **Leverage off the Company's experience and position to attract further alliances and capital investments**