

ASX ANNOUNCEMENT

15 May 2013

FINAL CONSENT GIVEN ON SKYFALL AND LARGO HEAVY RARE EARTH TENEMENT

TUC Resources Ltd (ASX:TUC) is pleased to announce that final consent has been given by Traditional Land Owners for full Exploration to begin on ELA27151.

Highlights

Final consent granted on three Key Heavy Rare Earth (HREE) tenements!

TUC recently completed negotiations of the Aboriginal Land Rights Access Agreements for tenements ELA27151 (containing Skyfall and Largo HREE Prospects), ELA29240 and ELA29241 containing other important exploration targets in TUC's Northern Territory HREE District (Figure 1).

On 8 May 2013 TUC held a Final Land Access meeting with Traditional Land Owners and were granted 'Final Consent' to explore on all three tenements.

This is a very significant step in obtaining full access to the highly prospective Skyfall Prospect where recent rock chip results have returned a 0.29% TREO (68.4% HREO) result on this large target. See TUC ASX Announcement dated 15 April 2013).

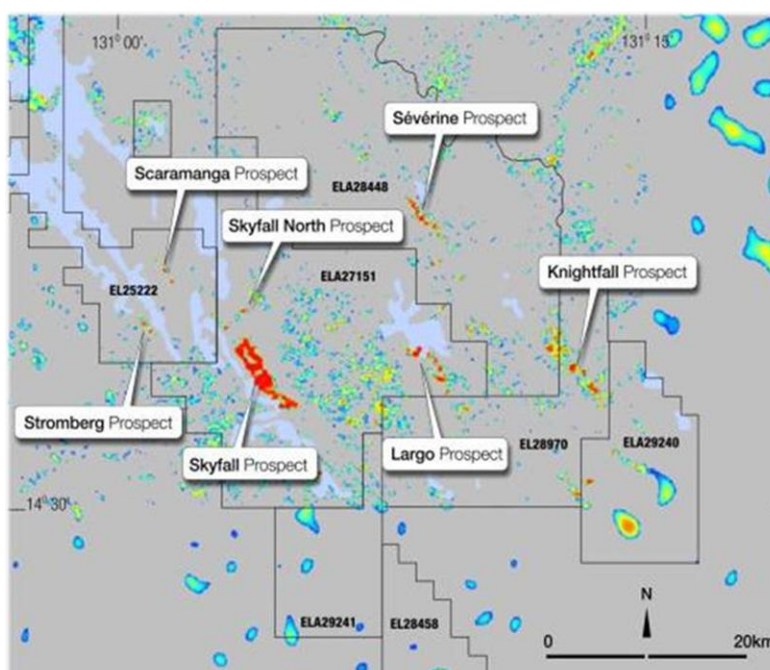


Figure 1: TUC's Northern Territory HREE District and Prospect.

Documentation will now be finalised before being presented to the Northern Land Council full sitting which is planned for late May 2013. Assuming ratification at this meeting, the tenements will proceed through the Ministerial grant process with full on-ground exploration access planned for July 2013.

TUC has been able to conduct early stage exploration on these tenements under 'Preliminary Exploration Permits'. Grant of the tenements will allow more advanced exploration such as drilling to begin.

Verbal Consent to Explore ELA28448

Also at the meeting on 8 May 2013, the Traditional Land Owners gave TUC verbal consent to negotiate an agreement on the final key tenement in the region, ELA28448. Successful negotiations on this tenement will secure full access to TUC's NT HREE District. The tenement contains the Sévérine HREE Prospect (Figure 1).

In the near term, TUC proposes to utilise options open to it under the Aboriginal Lands Right Act to undertake early stage reconnaissance exploration (hand held XRF and rock chip analysis), under the guidance of the Traditional Owners using a Preliminary Exploration Permit. This permit was also ratified at the meeting.

It is planned that full exploration access to ELA28448 can be finalised by late December 2013.

About TUC's Heavy Rare Earth District

TUC's HREE district is located approximately four hours' drive south of Darwin. It is home to multiple heavy rare earth dominant prospects which are exhibiting mineralogy favourable for low cost mineral processing.

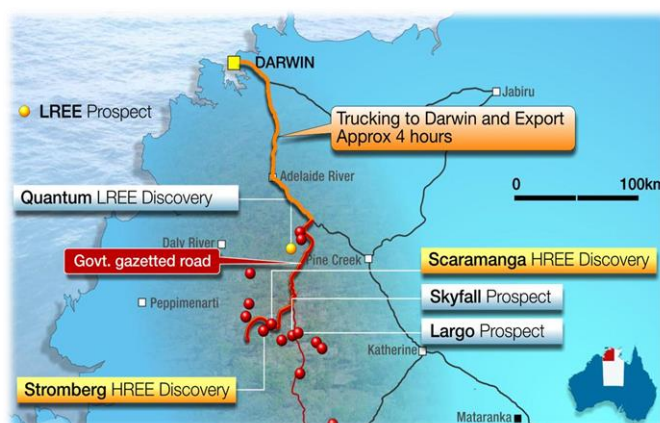


Figure 2: TUC's Northern Territory Heavy Rare Earth District; HREE prospects shown as red dots.

Heavy Rare Earths are an important component in a number of clean and low cost energy and electronic technologies such as wind power (a growing market).



Directors' outlook...

The Directors are pleased with the completion of these important land access steps, particularly given the recent early stage exploration success at Skyfall. This work clears the way for further exploration and results flow. This approval is also evidence of the Company's strong relationship with the Traditional Land Owners.

For further information please contact:

MR IAN BAMBOROUGH

Managing Director

TUC Resources Ltd

08 9325 7946 or ibamborough@tucresources.com.au

*Total Rare Earth Oxides (TREO's) have been calculated by addition of common oxide values for Ce, Dy, Er, Eu, Gd, Ho, La, Lu, Nd, Pr, Sm, Tb, Tm, Yb, Y. REO values have been calculated from rare earth element (REE) ppm grades after analysis by lithium-metaborate fusion and ICPMS, where possible, or by HF/multi acid digest and ICPMS. The total REO is calculated as the sum of all REE as REE₂O₃, with the exception of Ce, Pr and Tb; which are calculated as CeO₂, Pr₆O₁₁, and Tb₄O₇ respectively, in accordance with geochemical conventions.

**Heavy Rare Earth Elements HREE's and Heavy Rare Earth Oxides (HREO) = Dy, Er, Ho, Lu, Tb, Tm, Yb, Y;

Medium Rare Earth Elements MREE's = Gd, Eu, Sm;

Light Rare Earths LREE's Ce, La, Pr, Nd.

TUC Resources Ltd holds approximately 15,000km² of prospective land package across 47 (28 under application) tenements making it one of the biggest ground holders in the Northern Territory of Australia. The business holds multiple consolidated project areas across several key geological and metallogenic terrains, affording it some opportunity to diversify exploration into many commodities. TUC's main focus is its Stromberg Heavy Rare Earth District where it retains approximately 3000km² of tenements. The Stromberg District is located approximately 4 –5 hours' drive south of Darwin.

The information in this report relates to exploration results compiled by Ian Bamborough, who is a Member of The Australian Institute of Geoscientists. Ian Bamborough is a fulltime employee of TUC Resources Ltd. Ian Bamborough has sufficient experience which is relevant to the style of mineralisation and type of deposit under consideration and to the activity which he is undertaking to qualify as a Competent Person as defined in the 2004 Edition of the 'Australasian Code for Reporting of Exploration Results, Mineral Resources and Ore Reserves'. Ian Bamborough consents to the inclusion in the report of the matters based on his information in the form and context in which it appears.

<u>Registered Office</u>	<u>Main Office</u>	<u>Company Management</u>
15 Lovegrove Close Mount Claremont WA 6010 Tel: 08 9384 3284 Fax: 08 9284 3801 info@tucresources.com.au	Level 10, 553 Hay Street Perth WA 6000 Tel: 08 9325 7946 ABN: 94 115 770 226 www.tucresources.com.au	Peter Harold: Non-Executive Chairman Ian Bamborough: Managing Director Anthony Barton: Non-Executive Director Leon Charuckyj: Non-Executive Director Graeme Boden: Company Secretary
