

SIGNIFICANT COPPER TARGETS AT SHIKILA

19th March 2013

GEOCHEMISTRY AND AERO MAGNETIC RESULTS HIGHLIGHT COPPER TARGETS AT SHIKILA

Copper explorer Chrysalis Resources Limited (ASX: CYS) is pleased to announce that it has completed a soil geochemistry programme at its Shikila Project in Zambia.

More than 6,600 samples have been analysed for copper using a hand-held Niton XRF. The results show multiple copper anomalies associated with deep seated magnetic anomalies that are considered to be intrusions providing the heat source for the hydrothermal copper mineralisation similar to the characteristics of the discovery at the Wangolo Prospect. Chrysalis believes these results are significant given the copper soil geochemistry anomalies coincide with deep magnetic anomalies.

John Noakes, Chrysalis' in country consultant said, "these deep magnetic anomalies are possible intrusions which are associated with the mineralisation in the region. Infill soil geochemistry and follow-up drilling this dry season should significantly upgrade the Shikila licence".

Figure 1 below shows the correlation between airborne geophysics and copper in soils geochemistry over the entire Shikila licence. This work has produced many potential anomalies in an area of more than 200km² which require infill work and a dedicated reverse circulation (RC) drill programme that will commence during the 2013 dry season (Q2 CY13).

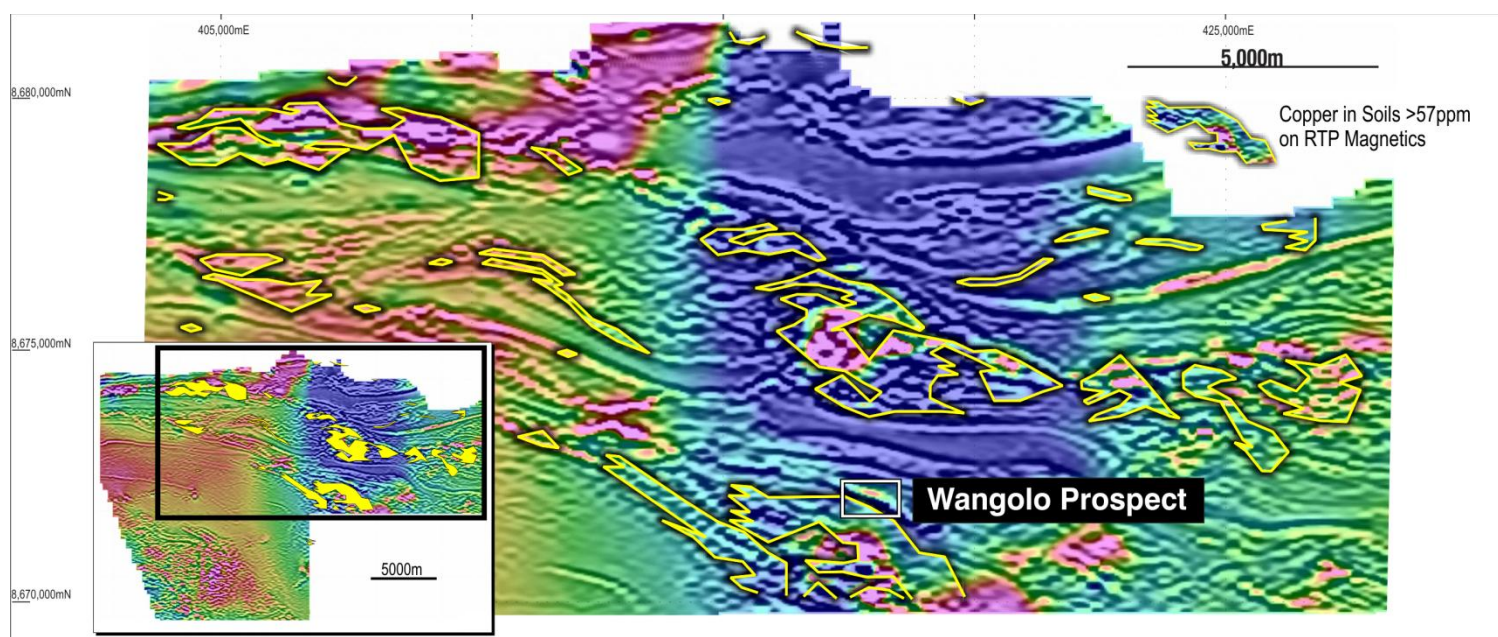


Figure 1: Shikila airborne magnetics & soil geochemistry

Continued Regional Exploration

Chrysalis has completed airborne geophysics over all the licence areas. These surveys have presented a number of potential anomalies that require soil geochemistry and gravity surveys commencing in April 2013.

Chrysalis' two southern licences include Mwongo which is adjacent to Blackthorne Resources Ltd (ASX: BTR) Kitumba discovery. Figure 2 below is the Mwongo licence with airborne magnetic which shows several intrusive targets. One of these targets is coincident with historic drainage copper geochemistry.

Regional exploration over the Mwongo licence this dry season (April – October) will include soil sampling over the selected drainage geochemical anomalies; and ground geophysics including gravity surveys over the magnetic anomalies that may represent late stage intrusions associated with the Hook Granite.

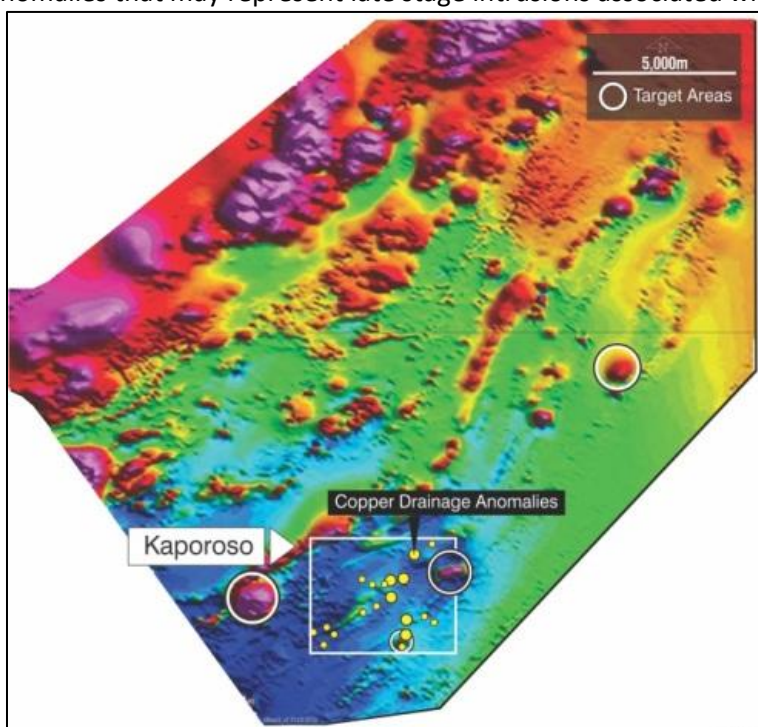


Figure 2: Mwongo Airborne Magnetics and Drainage Geochemistry



Dr Neale Fong
Executive Chairman

Competent Person's Statement

The information in this report that relates to Exploration Results, Mineral Resources or Ore Reserves for the Zambian Projects is based on information compiled by Mr John S Noakes, who is a Fellow of The Australasian Institute of Mining and Metallurgy and a Fellow of the Geological Society of London. Mr Noakes is a director of Sedgwick Resources Ltd and has a beneficial interest in shares in Chrysalis Resources Ltd. Mr. Noakes has sufficient experience which is relevant to the style of mineralisation and type of deposit under consideration and to the activity which he is undertaking to qualify as a Competent Person as defined in the 2004 Edition of the 'Australasian Code for Reporting of Exploration Results, Mineral Resources and Ore Reserve's'. Mr Noakes consents to the inclusion in the report of the matters based on his information in the form and context in which it appears.

Disclaimer

There has been insufficient exploration to define a Mineral Resource calculated in accordance with JORC Code and it is uncertain further exploration will result in the determination of a Mineral Resource.



Mel Cotterell
Company Secretary

Chrysalis Resources Limited	Company Snapshot	Company Structure	Board Management
A.B.N 58 125 931 964 Level 1 331 Hay Street SUBIACO WA 6008 PO Box 226, Wembley WA 6913 Phone: 618 9380 4430 Fax: 618 9481 5044 E: info@chrysalisresources.com.au www.chrysalisresources.com.au	Listed on ASX 27 May 2008 ASX Share Code CYS Sector Mining	No of Shares on Issue 157,519,564 No of Options on Issue 35,036,327 Cash (as at 31 st January) \$1.59M	Dr Neale Fong - Executive Chairman Mr Grant Kidner - Executive Director Mr Adrian Paul - Non-Executive Director Mr Brad Marwood - Non-Executive Director Mr Trevor Benson - Non-Executive Director Ms Mel Cotterell - Company Secretary