



---

## **QUARTERLY ACTIVITIES STATEMENT**

**For the quarter ending 30 September 2013**

### **HIGHLIGHTS**

#### **Glandore Project**

- Second phase drilling results include 2m @ 3.5g/t Au and 2m @ 2.55g/t Au
- Glandore drilling confirms new gold trends
- New trends confirm Fluid Flow targets to be drilled
- The Glandore lease areas over Lake Yindarlgooda have been assessed by the ACMC as not being a mythical site

#### **Glandore Regional Hub**

- New geochemical programs planned for coming quarter on satellite leases

#### **Jundee South Project**

- RC drilling completed for 900m in six holes
- 6m (from 52m) at 3.44g/t Au (including 1m at 15.62g/t Au) in MRC10
- 16m (from 12m) at 1.22g/t Au in MRC11
- Geochemical survey completed for 452 samples

#### **Gindalbie Project**

- Soil and rock chip surveys completed for 348 samples

## EXPLORATION ACTIVITIES

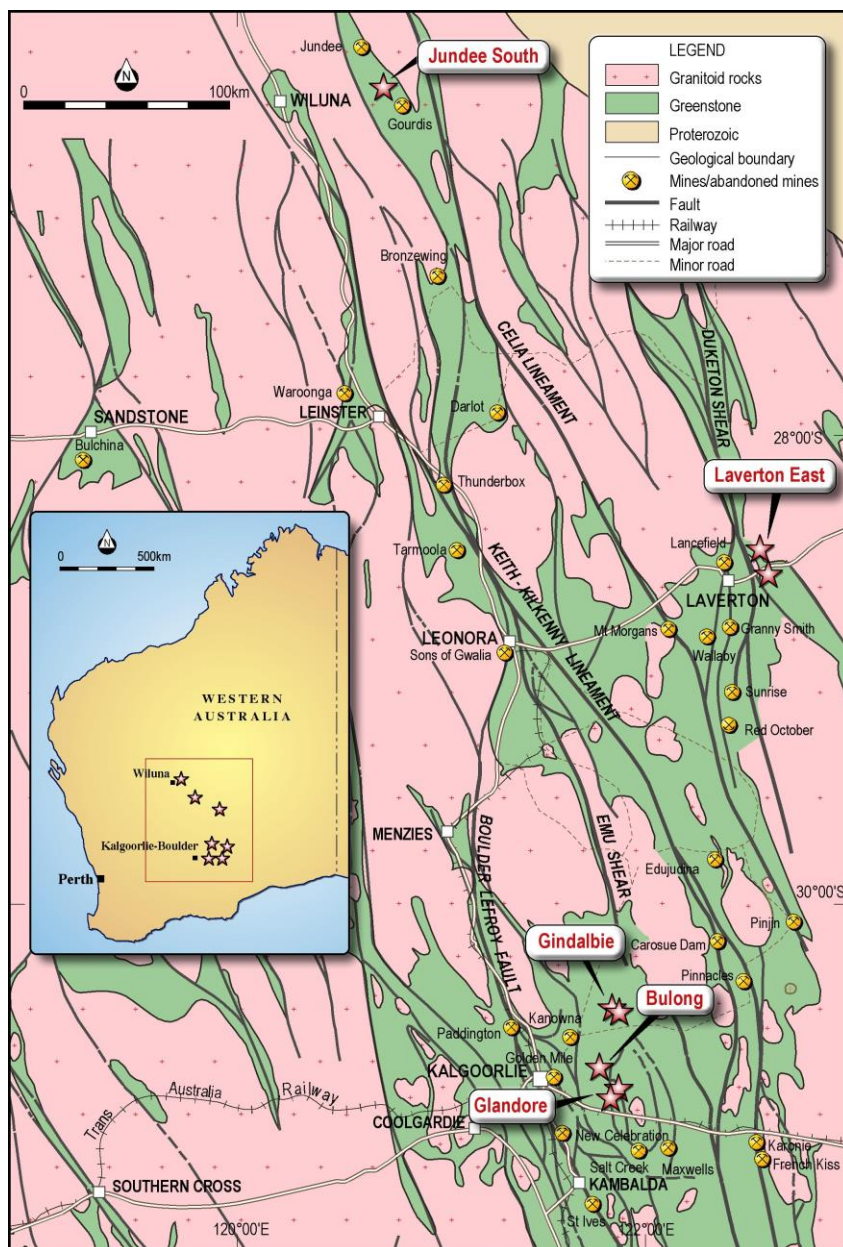


Figure 1 Aruma Exploration Areas in Western Australia

Aruma Resources Limited ("Aruma") has three advanced gold exploration projects, **Glandore**, **Jundee South**, and **Gindalbie**; located near proven gold producing centres of the Eastern Goldfields of Western Australia. This region is considered to be both highly prospective for gold as well as highly amenable for the development and exploitation of new deposits. The September quarter's exploration program included the completion of the drilling of these defined targets.

### Aruma Resources Limited

ABN 77 141 335 364 ASX: AAJ  
Suite 33, 18 Stirling Highway, Nedlands WA 6009  
Locked Bag 2000, Nedlands WA 6909, Australia  
T+61 8 6389 1799 | F +61 8 6389 0112 | W [www.arumaresources.com](http://www.arumaresources.com)



QUARTERLY ACTIVITIES STATEMENT  
FOR THE QUARTER ENDING 30 September 2013

The Company is committed to its strategy of efficient exploration to confirm or disprove potential targets, with a view to developing a gold production hub centred on its flagship Glandore Project.

EASTERN GOLDFIELDS	Glandore Hub	<ul style="list-style-type: none"> <li>Glandore Project - 40km east of Kalgoorlie-Boulder</li> <li>Status - drilled on Western Anomalies with data interpretation underway</li> <li>Eastern anomalies exploration in discussion with Central East Group (CEG)</li> <li>ACMC dismiss claim over Lake Yindarlgooda</li> </ul>
		<ul style="list-style-type: none"> <li>Gindalbie Project - 60km north-east of Kalgoorlie-Boulder</li> <li>Status – drilled with extensive low grade gold in an intrusive rock</li> <li>Geochemical follow-up on lease package in coming half year</li> </ul>
		<ul style="list-style-type: none"> <li>Bulong Project - 30 km east of Kalgoorlie-Boulder</li> <li>Status – granted and exploration underway</li> </ul>
	Regional Projects	<ul style="list-style-type: none"> <li>Jundee South Project - 20km south of Jundee Mine</li> <li>Status - RC drilling completed with strong mineralisation found</li> </ul>
		<ul style="list-style-type: none"> <li>Laverton East Project - 20km east of Laverton</li> <li>Status - Paul Well (Northern) lease to be dropped</li> </ul>

**Table 1 Aruma Leases with descriptions and status**

### Results at Glandore

The initial geochemical survey at **Steves Prospect** defined the mineralisation as 350m long and up to 23m thick. The highly anomalous surface sampling contained values up to 20 g/t gold and visible gold in hand specimens.

The Second Phase RC drilling at Glandore was done to follow up the 5m at 4.3g/t in GRC103 at Steves Prospect. With all holes now assayed, the values of the intersections are shown below. The previously announced RC sample assays (21 May 2013) which included 5m at 4.3g/t Au from 60m in GRC103 are in Table 2. These are on a quartz vein system with associated carbonate lode style alteration. This intersection was underneath a surface geochemical sample of 1.01 g/t Au. The intersections in GRC100 are under the initial surface assays including 4.54 and 20.4 g/t from chip samples.

### Aruma Resources Limited

ABN 77 141 335 364 ASX: AAJ  
Suite 33, 18 Stirling Highway, Nedlands WA 6009  
Locked Bag 2000, Nedlands WA 6909, Australia  
T+61 8 6389 1799 I F +61 8 6389 0112 I W [www.arumaresources.com](http://www.arumaresources.com)



QUARTERLY ACTIVITIES STATEMENT  
FOR THE QUARTER ENDING 30 September 2013

RC	Dip/Az	GDA94	GDA94	Depth	Depth	g/t Au	Intercept
Drillhole	Degrees	Easting	Northing	From	To	FA 30g	m
GRC094	-60/270	390900	6595310	68	72	<b>1.35*</b>	4
GRC094	-60/270	390900	6595310	68	69	<b>3.25</b>	1
GRC094	-60/270	390900	6595310	70	71	<b>1.32</b>	1
GRC100	-60/60	390548	6595374	22	23	<b>1.38</b>	1
GRC103	-60/240	390472	6595573	60	65	<b>4.31*</b>	5
GRC103	-60/240	390472	6595573	60	61	<b>4.08</b>	1
GRC103	-60/240	390472	6595573	61	62	<b>5.00</b>	1
GRC103	-60/240	390472	6595573	62	63	<b>7.80</b>	1
GRC103	-60/240	390472	6595573	63	64	<b>3.23</b>	1
GRC103	-60/240	390472	6595573	64	65	<b>1.43</b>	1

**Table 2 Gold intersections >1.0 g/t Au from First Phase RC drilling at Steves Prospect**  
**NB \* is an average for the intersection**

The recent intersections are to the north and south of the previous intersections, and the mineralisation can be traced over 450m and is open to the north and south.

RC	Dip/Az	GDA94	GDA94	Depth	Depth	g/t Au	Intercept	Average
Drillhole	Degrees	Easting	Northing	From	To	FA 30g	m	g/t Au
GRC105	-60/220	390432	6595641	62	63	<b>4.13*</b>	2	<b>3.60</b>
				63	65	<b>3.07</b>		
GRC106	-60/240	390457	6595602	64	65	<b>2.83</b>	2	<b>2.55</b>
				65	66	<b>2.28</b>		
GRC117	-60/270	390648	6595328	19	20	<b>1.44*</b>	2	<b>1.21</b>
				20	21	<b>0.98</b>		
GRC119	-60/270	390661	6595201	16	17	<b>2.83</b>	1	<b>2.55</b>

**Table 3 Gold intersections >1.0 g/t Au from Second Phase RC drilling at Steves Prospect**  
**NB \* value is average of repeats**

The mineralisation in the new holes continues the mineralisation to the north and south and it is still open in both directions. Although the "economic intersections" (>1 g/t Au) are not thick, the "mineralised zones" (>0.1g/t Au) are between 4 and 10m thick, with an average of over 7m and is listed below in Table 4.

**Aruma Resources Limited**

ABN 77 141 335 364 ASX: AAJ  
Suite 33, 18 Stirling Highway, Nedlands WA 6009  
Locked Bag 2000, Nedlands WA 6909, Australia  
T+61 8 6389 1799 I F +61 8 6389 0112 I Wwww.arumaresources.com



QUARTERLY ACTIVITIES STATEMENT  
FOR THE QUARTER ENDING 30 September 2013

RC	Dip/Az	GDA94	GDA94	Depth	Depth	g/t Au	Intercept
Drillhole	Degrees	Easting	Northing	From	To	FA 30g	m
GRC094	-60/270	390900	6595310	68	72	<b>1.35</b>	4
GRC100	-60/60	390548	6595374	22	28	<b>0.50</b>	6
GRC103	-60/240	390472	6595573	59	69	<b>2.31</b>	10
GRC105	-60/220	390432	6595641	57	66	<b>1.01</b>	9
GRC106	-60/240	390457	6595602	63	73	<b>0.82</b>	10
GRC117	-60/270	390648	6595328	17	24	<b>0.56</b>	7
GRC119	-60/270	390661	6595201	14	21	<b>0.45</b>	7

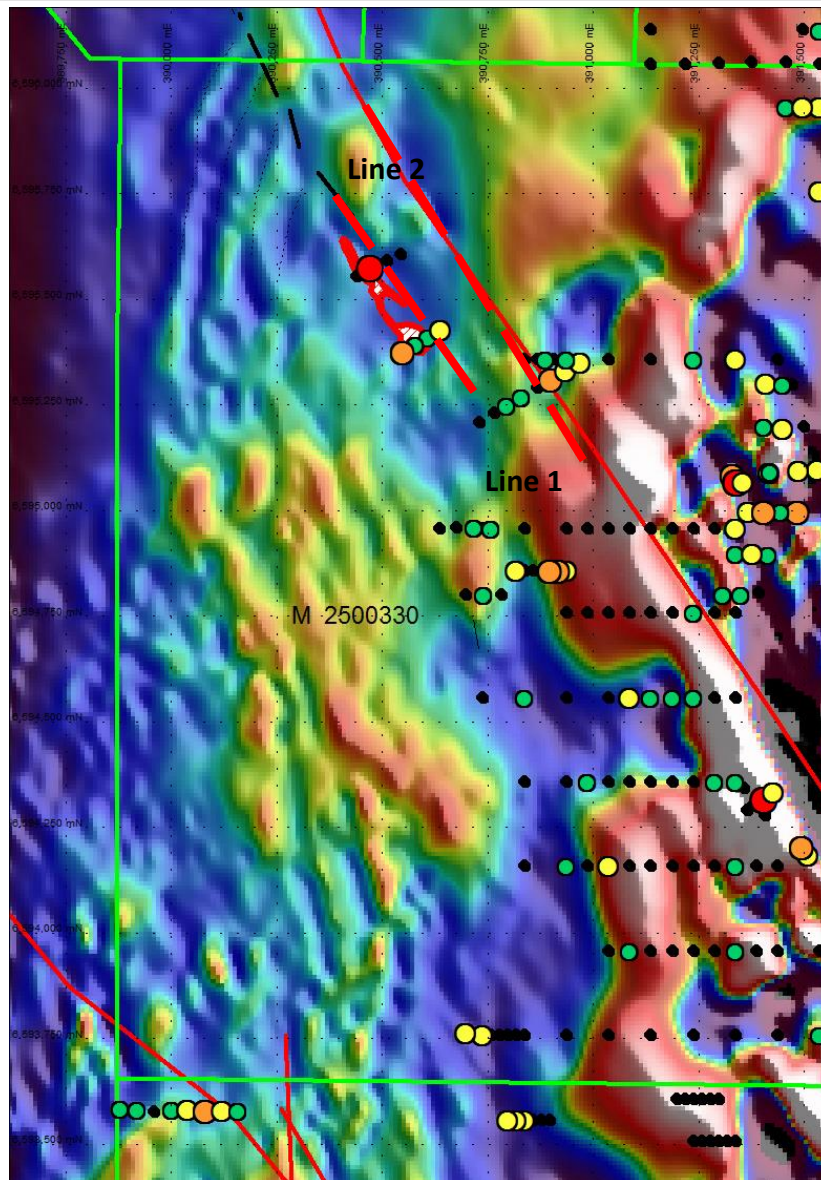
**Table 4** Significant mineralised intersections that include >1.0 g/t Au at Steves Prospect

The above mineralisation is mainly in the western area of Steves Prospect, with GRC94 being located 350m east of the main line. The next quarter will see a complete appraisal of the total lease package at Glandore, with emphasis on the data from the last 6 months of intensive drilling and associated studies. By using the PIMA scanning of chips, Fluid Flow Modelling data and the HyMap information, a better understanding of the Glandore project and surrounding leases will be gained.

The definition of several lines of mineralisation at Steves Prospect is now apparent, and with the Grunts line still to be followed up, the potential of the Glandore discoveries keeps increasing. Figure 2 below shows the Fluid Flow trends as unbroken red lines with the drill defined mineralisation trends as the dashed red lines.

The understanding of the local controls on mineralisation will be enhanced by the compilation of all the data, and re-interpretation of the models from all data sources. The timing of this activity will also be effective in controlling expenditure in the current equity market conditions.





**Figure 2** Aruma Resources' Steves Prospect showing magnetics with drill results (Dots) and anomaly trendlines (Lines 1 and 2, West and East respectively) (Au in holes = Red >5g/t, Orange >1g/t, Yellow >0.5g/t Au, Green >0.1g/t)

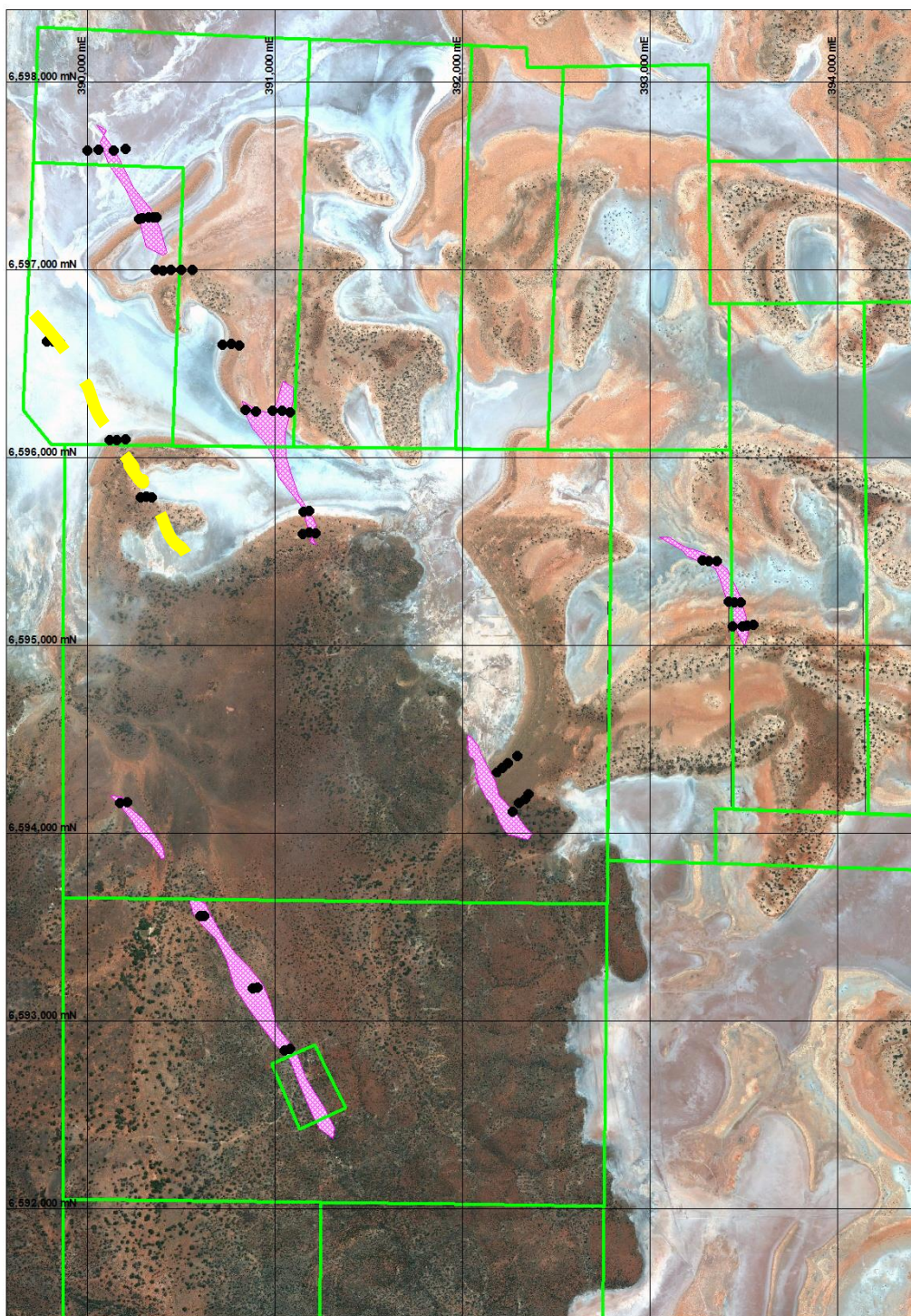
The PoW is with the DMP for approval, which is expected will take 6 to 8 weeks. This will allow for the scheduled drilling to commence in the new calendar year.

The "Aboriginal Cultural Material Committee (ACMC) assessed Lake Yindarlgooda as not an Aboriginal heritage site to which the State's legislation applies". This has taken three years for this matter to be resolved and the claimants have been contacted to restart heritage surveys.





QUARTERLY ACTIVITIES STATEMENT  
FOR THE QUARTER ENDING 30 September 2013



**Figure 3** Aruma Resources' Glandore Project showing new drill targets (Pink solids) from the Fluid Flow Study and the Steves Trend (Yellow dashed) on the Google Earth image. Lease boundaries are Green.

**Aruma Resources Limited**

ABN 77 141 335 364 ASX: AAJ  
Suite 33, 18 Stirling Highway, Nedlands WA 6009  
Locked Bag 2000, Nedlands WA 6909, Australia  
T+61 8 6389 1799 | F +61 8 6389 0112 | W [www.arumaresources.com](http://www.arumaresources.com)



QUARTERLY ACTIVITIES STATEMENT  
FOR THE QUARTER ENDING 30 September 2013

## Results from Gindalbie Project

The initial drilling at the **Gindalbie Project** was completed in following up 25.84g/t Au assay results and visible gold being found at location. The drilling consisted of 12 RC holes for 1,020m and the results show a large number of anomalous gold mineralisation around the Lady Lauren quartz veins.

RC	Dip/Az	GDA94	GDA94	Depth	Depth	g/t Au
Drillhole	Degrees	Easting	Northing	From	To	FA 30g
LLRC01	60/180	389881	6640518	13	14	0.26
				14	15	1.21
				15	16	0.41
				22	23	0.25
				75	76	0.3
				97	98	0.47
LLRC02	60/180	389878	6640539	48	49	0.2
				61	62	0.21
				68	69	1.75
LLRC03	60/180	389901	6640520	2	3	0.21
				35	36	0.21
LLRC04	60/180	389901	6640539	19	20	0.35
				20	21	1.24
				21	22	0.22
				24	25	0.9
				25	26	1.6
				26	27	0.72
				27	28	0.36
				42	43	0.4
				62	63	0.66
				80	81	0.36
LLRC05	60/180	389920	6640520	26	27	0.46
				54	55	0.36
LLRC06	60/180	389921	6640540	27	28	0.3
				29	30	0.27
				56	57	0.53
				57	58	0.36
LLRC08	60/180	389940	6640539	70	71	0.37
LLRC12	60/180	389818	6640461	38	39	0.3

**Table 5 Anomalous (>0.2g/t Au) Gold intersections at Lady Lauren**

### Aruma Resources Limited

ABN 77 141 335 364 ASX: AAJ  
Suite 33, 18 Stirling Highway, Nedlands WA 6009  
Locked Bag 2000, Nedlands WA 6909, Australia  
T+61 8 6389 1799 I F +61 8 6389 0112 I Wwww.arumaresources.com



QUARTERLY ACTIVITIES STATEMENT  
FOR THE QUARTER ENDING 30 September 2013

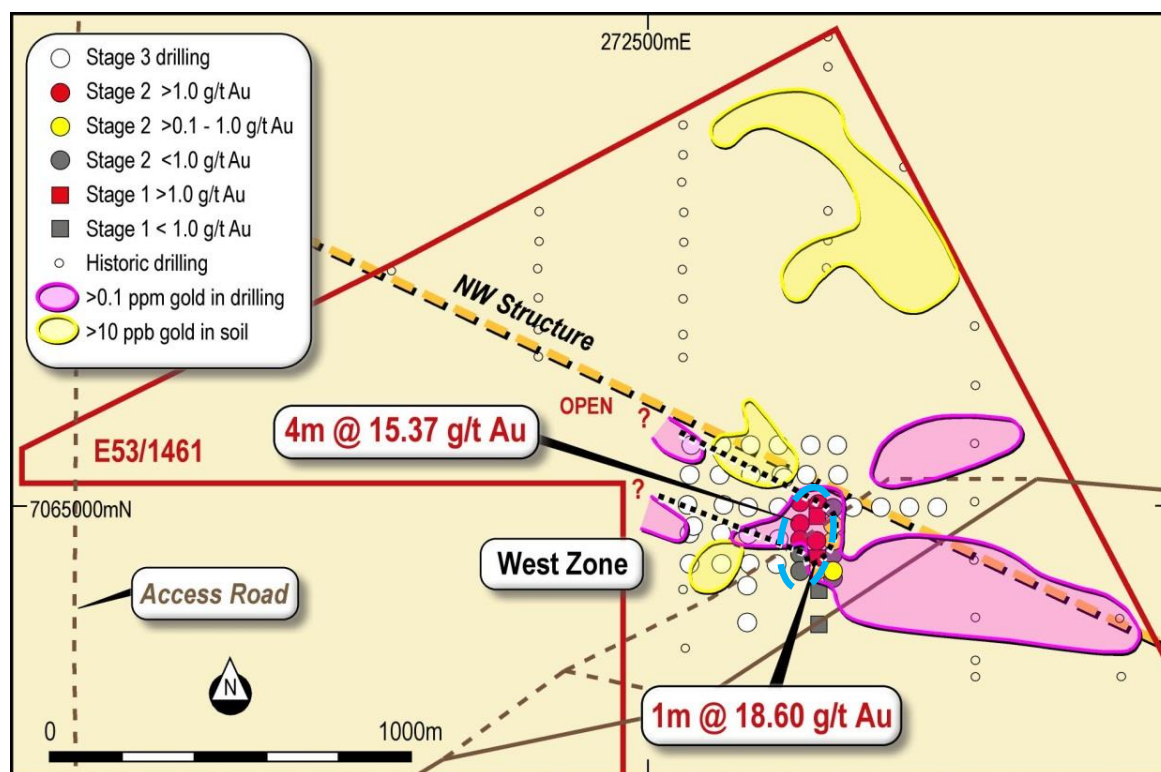
The anomalous intersections are listed in Table 5 above and include 4 results greater than 1g/t Au. These results are to be followed up by soil sampling and potential further drilling in order to further map the extent of the gold anomalies found at the Lady Lauren quartz veins.

Future work will involve a more regional soil sampling approach to investigate some broad geochemical and HyMap anomalies. Up to five areas have been identified for appraisal in the coming quarter.

### Jundee South Project

The **Jundee South** RC drilling was done in Q1 of the new financial year after heritage approval was gained. This consisted of 900m to define the mineralisation to a depth of 100m to 150m depth. This drilling intersected the fresh rock mineralisation which has helped the understanding of the trends for exploration for the rest of the lease.

The Jundee South Project (E53/1461) is located 60km east of Wiluna and 25km south of the Jundee Mine. The 2011-2012 RAB programs consisted of 2,562m of RAB in 75 vertical drill holes following up previously identified soil anomalies that had not been drilled. One soil sample result produced a 16.5g/t Au value in the area near the current Western Area of mineralisation (Normandy Mining Limited, 1992).



**Figure 4** Drilling location plan with geochem and drilling anomalies and the RC target area as a blue ellipse

#### Aruma Resources Limited

ABN 77 141 335 364 ASX: AAJ  
Suite 33, 18 Stirling Highway, Nedlands WA 6009  
Locked Bag 2000, Nedlands WA 6909, Australia  
T+61 8 6389 1799 | F +61 8 6389 0112 | W www.arumaresources.com



**QUARTERLY ACTIVITIES STATEMENT  
FOR THE QUARTER ENDING 30 September 2013**

The west northwest trending structure can be seen in Figure 4 and reflects the structures that control the mineralisation at the nearby Gourdis and Vause Deposits. The complete tenement area has been evaluated again using geochemistry, structure and the HyMap/Magnetics in light of this discovery. The focus in the short term will be to investigate bedrock mineralisation at the Western Area to evaluate the thick and high grade mineralisation reported previously.

The significance of the RAB results was that the mineralisation was defined over a 400m by 100m zone and the high grade thick zones are located in a 40m wide by 100m long initial target. This is shown in Table 6 below.

Hole	Easting	Northing	Total Interval (m)	Average g/t Au
JSR033	272960	7065040	17	<b>1.87</b>
JSR034	272958	7064978	12	<b>6.58</b>
JSR035	272960	7064941	10	<b>1.53</b>
JSR037	273000	7064940	3	<b>1.43</b>

Note: All holes vertical and assays by Fire Assay 50g

**Table 6      Thick and high grade mineralisation in the RAB area**

The significance of the RC results are again the shallow depths (from 11m), thickness (12 to 16m), high grades (6m at 3.44g/t Au including 1m at 15.62g/t Au) in MRC10 and it is open to the west. The mineralisation is in several rock types indicating a LODE system, with associated quartz, sulphides and carbonates. The gold mineralisation is detailed in Table 7 and will be scanned with PIMA to map the alteration and mineralisation style before embarking on more drilling programs.



QUARTERLY ACTIVITIES STATEMENT  
FOR THE QUARTER ENDING 30 September 2013

RC	Dip/Az	GDA94	GDA94	Depth	Depth	Average	Intercept
Drillhole	Degrees	Easting	Northing	From	To	g/t Au	m
MRC01	-60/090	273068	7064820	96	106	0.12	10
MRC02	-60/090	273024	7064819	91	102	0.13	11
MRC03	-60/090	272984	7064819	85	92	0.24	7
				98	115	0.18	17
MRC04	-60/090	272945	7064818	82	101	0.18	19
MRC05	-60/090	272906	7064817	94	101	0.18	7
MRC08	-60/090	272982	7064899	24	37	0.67	13
			inc	33	37	1.81	4
			inc	34	36	3.45	2
MRC10	-60/065	272947	7064947	5	15	0.46	10
			inc	11	12	1.60	1
				47	59	1.85	12
			inc	52	58	3.44	6
			inc	52	53	15.30	1
MRC11	-60/330	272980	7064977	14	30	1.22	16
			inc	16	19	3.15	3
MRC12	-60/330	272949	7064955	36	41	0.83	5
			inc	38	40	1.40	2
MRC13	-60/330	272915	7064931	49	52	0.51	3
			inc	49	50	1.09	1

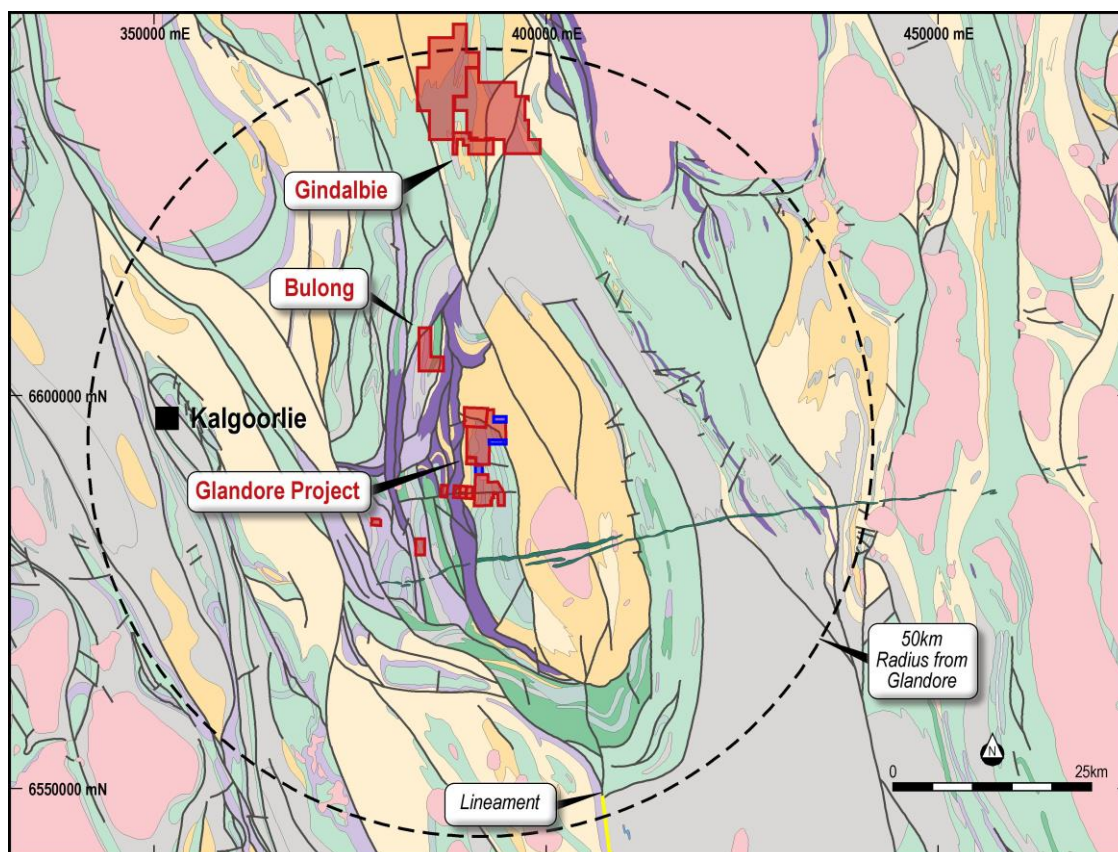
**Table 7** New intersections at Jundee South Project greater than 0.1g/t

**Aruma Resources Limited**

ABN 77 141 335 364 ASX: AAJ  
Suite 33, 18 Stirling Highway, Nedlands WA 6009  
Locked Bag 2000, Nedlands WA 6909, Australia  
T+61 8 6389 1799 | F +61 8 6389 0112 | Wwww.arumaresources.com

## Glandore Hub Project

The **Glandore Hub Project** is located in a 60km radius of the Glandore Project. The possibility of satellite projects within easy trucking distance is a policy common to several successful producers (such as Integra Mining Limited, Silver Lake Resources Limited [now merged] and Saracen Mineral Holdings Limited in the area.



**Figure 5 Glandore Hub current leases and main focus area**

The main leases that are advanced are Glandore and Gindalbie and the eastern leases have been dropped or surrendered. There are interesting anomalies in historical data being found at Bulong and the South-West PLs below Glandore. This fits with the aim of investigating the Salt Creek-Majestic Structure.





## Proposed Exploration Activities for Q2 FY2013/2014

### GLANDORE

- Geochemical surface sampling over new targets
- PoW for drilling submitted
- Corescan interpretation of RC chips of fresh mineralised zones

### GINDALBIE PROJECT

- Reappraisal of all the drill results and total data package
- Geochemical surface sampling over all targets

### JUNDEE SOUTH PROJECT

- 3D modelling to be undertaken on intersections
- Corescan interpretation of RC chips of fresh mineralised zones

### REGIONAL LEASES

- Reappraisal of the total data package
- Geochemical surface sampling over all targets

The assays for the 1,556m of the second phase of RC drilling were received for the Glandore Project to test the Fluid Flow and surface mineralisation.

Aruma will be concentrating its exploration on the three advanced projects at Glandore, Gindalbie and Jundee South.

In the current equities environment, Aruma will be minimising expenditure in the coming six months. This will allow a critical analysis of all the Projects and the compilation of all the data obtained in the last year of drilling and analysis at all Projects. With the completed drilling this quarter the programs totalled 6,476m of RC with assays at 1m intervals in four locations.

All of Aruma's Projects have strong gold indicators and proven high grade potential. The ongoing work comprises:

- Data compilation and integration at **Glandore** to target mineralisation
- PoW for drilling six targets defined by Fluid Flow and extension of **Steves** trend
- Geochemical sampling of gold anomalies in the western areas of **Gindalbie**
- The Company is funded for the coming exploration year with cash of \$2.58M at September 30, 2013

In addition to its current projects in Western Australia, Aruma continues to evaluate potential project opportunities both locally and overseas.

---

#### Aruma Resources Limited

ABN 77 141 335 364 ASX: AAJ  
Suite 33, 18 Stirling Highway, Nedlands WA 6009  
Locked Bag 2000, Nedlands WA 6909, Australia  
T+61 8 6389 1799 | F+61 8 6389 0112 | Wwww.arumaresources.com



**QUARTERLY ACTIVITIES STATEMENT  
FOR THE QUARTER ENDING 30 September 2013**

---

**For further information please contact:**

**Company:**

Peter Schwann

Managing Director

Aruma Resources Limited

[info@arumaresources.com](mailto:info@arumaresources.com)

Tel: +61 (0) 8 6389 1799

Mob: +61 (0)417 946 370

*The information in this release that relates to Exploration Results, Mineral Resources or Ore Reserves is based on information compiled by Peter Schwann who is a Fellow of the Australasian Institute of Mining and Metallurgy and Chartered Professional (Geology). Mr Schwann is an employee of the Company. Mr Schwann has sufficient relevant experience to qualify as a Competent Person as defined in the JORC Code (2004) and consents to the inclusion of this information in the form and context in which it appears.*

---

**Aruma Resources Limited**

ABN 77 141 335 364 ASX: AAJ

Suite 33, 18 Stirling Highway, Nedlands WA 6009

Locked Bag 2000, Nedlands WA 6909, Australia

T+61 8 6389 1799 | F +61 8 6389 0112 | W [www.arumaresources.com](http://www.arumaresources.com)