



KENTOR GOLD
ACN 082 658 080

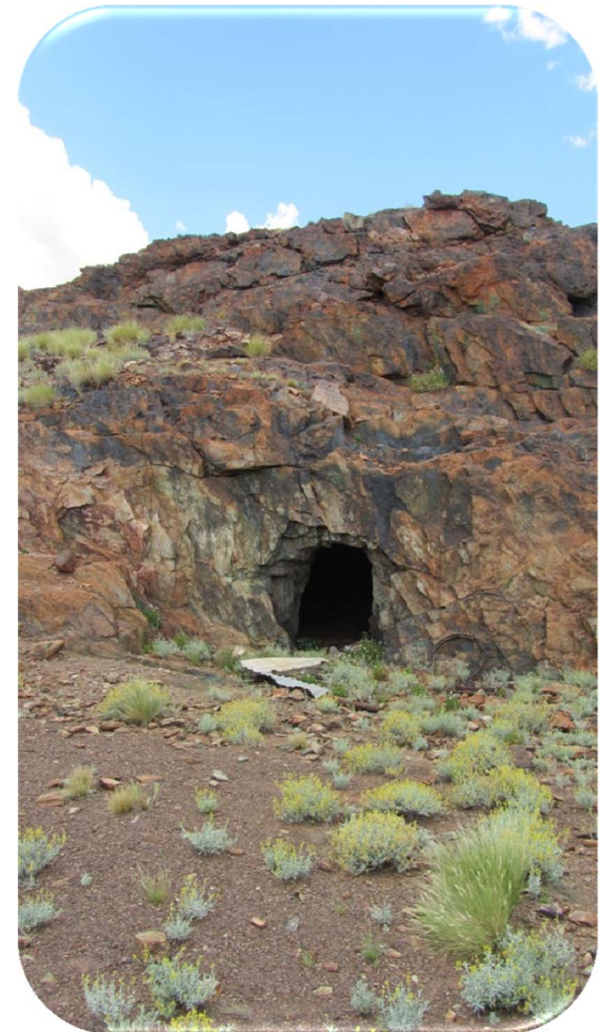
**NORTHERN
TERRITORY
MINING**

Realising Exploration & Development Potential of the Jervois Copper Project

19 June 2013

Outline

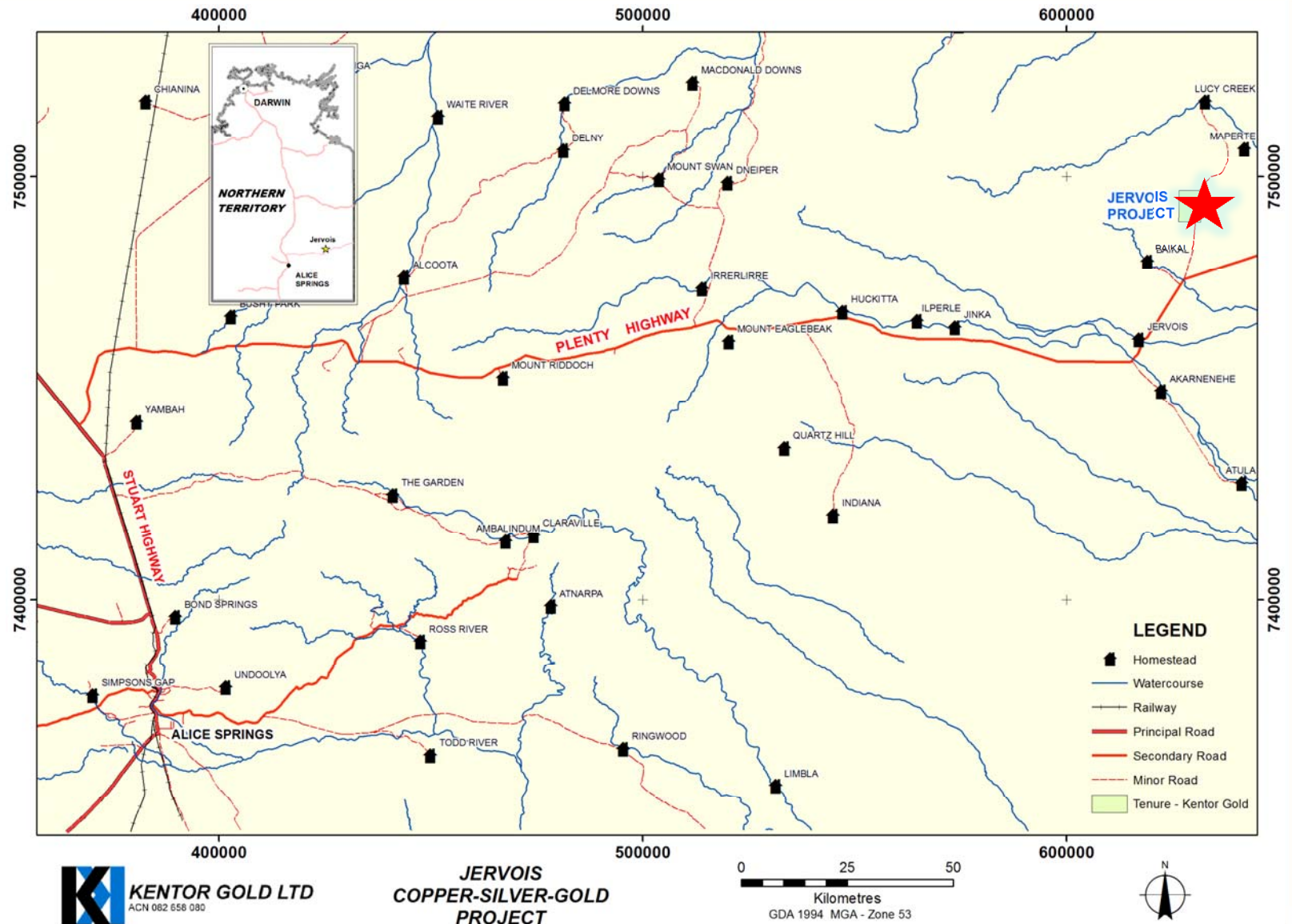
- Scoping Study Results
- Key Drivers of Project Economics
- Feasibility Studies
- Resource and Exploration drilling programs



Location

Transport route from Jervois

- 221km unsealed road (Plenty Hwy)
- 73km bitumen (Plenty Hwy)
- 1,300km rail to port of Darwin



Project History

- First discovered 1928
- Plenty River Mining 1980-83
 - Mining Green Parrot Lead deposit
- MIM
 - Deeper drilling
- Reward Minerals
 - RC drilling on several prospects
- Kentor Gold
 - 2011& 2012 Drilling Programs
 - Resource Updates 2011,12,13
 - Scoping Study
 - Jan 2014 Pre Feasibility Study



Post Scoping Study

Cost Reduction

- Construction – Value engineering study
- Power – Value engineering study
- Resource upgrade and increase

Revenue Increase

- Copper, Silver, Gold concentrate – Remove/reduce penalties
- Improved Recoveries

Potential New Products

- Copper cathode
- Bismuth concentrate
- Zinc concentrate
- Tungsten concentrate

Construction - Value Engineering Study

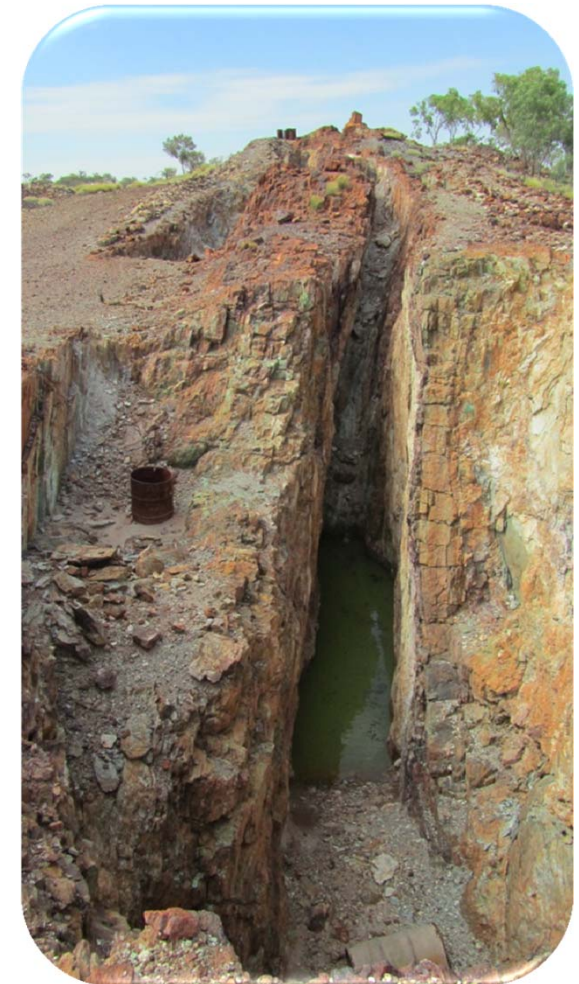
- Reduced capital cost to A\$185.5m
- Increases
 - camp rental for construction period
- Decreases
 - Reduced raw material and fabrication costs
 - Build Own Operate (BOO) Camp & Power Station

Capital Cost Breakdown

1.5Mtpa	A\$m	Δ	A\$m
Construction Indirects	14.9	14.4	29.3
Process Plant Costs	59.1	-1.1	58
Reagents & Plant Services	10.7	-1.2	9.5
Infrastructure	70.1	-49.5	20.6
Mining	5.8		5.8
EPCM	26.6	-4.9	21.7
Owner's Costs	10.2		10.2
Contingency	36.8	-6.3	30.5
TOTAL	234.2	-48.7	185.5

Magnetite Concentrate

- Ore is hosted in Magnetite schist
- Magnetic separation of tails
 - ~ 25% of tails mass
- Regrind produces
 - high grade concentrate +70%Fe
 - Low impurity
 - Silica ~1.3%
 - Phosphorous ~0.004%
 - Alumina ~0.6%
 - Sulphur ~0.3% (higher than spec)
- Possible Tungsten concentrate from magnetite tails



Copper Oxide Resource

Assessing feasibility of copper heap leach in advance of flotation

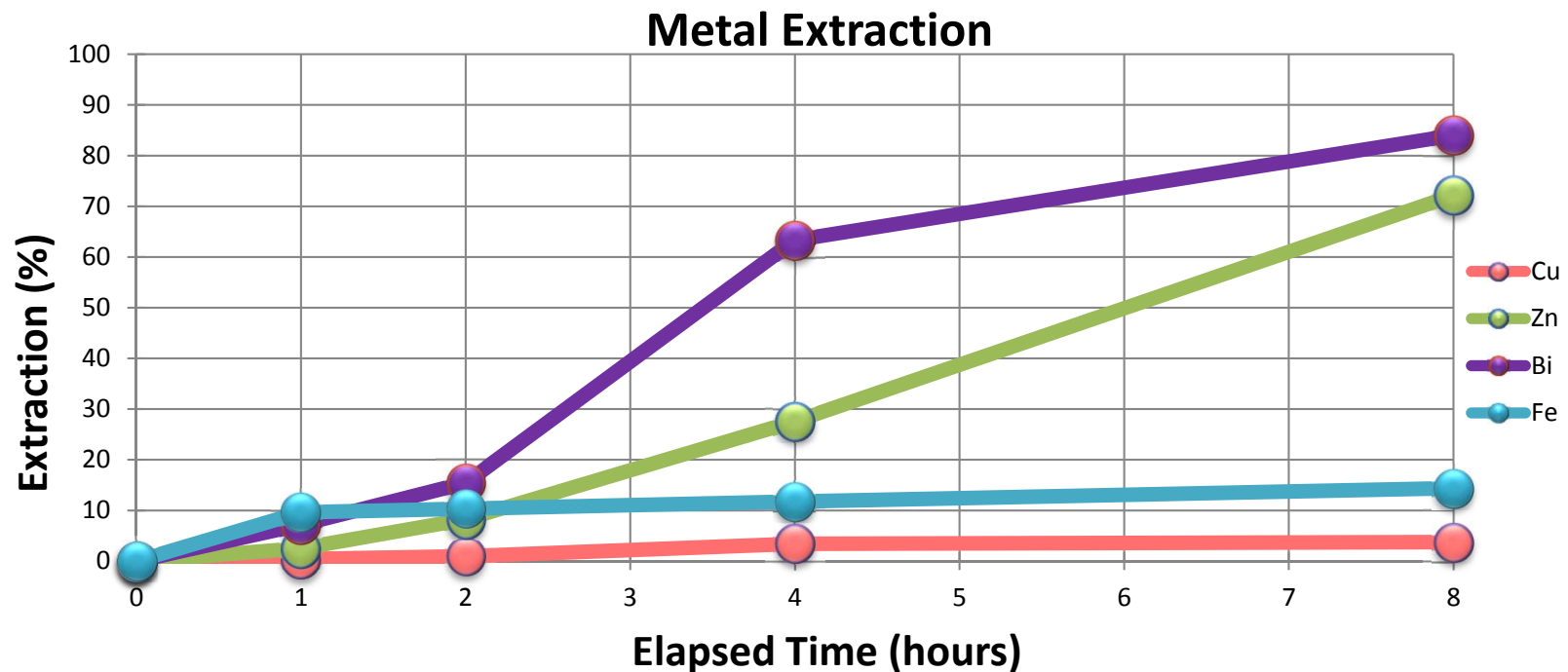
- High average grade
- Good exploration potential
- Historical test work successful



Jan 2013 Resource		kT	Cu %	Ag g/t
Marshall/Reward	Oxidised	196	1.43	42.5
	Partially Ox.	829	1.71	45.6
Bellbird	Oxidised	325	1.17	6.7
	Partially Ox.	235	1.14	6.9
TOTAL	Oxidised	521	1.27	20.2
	Partially Ox.	1,064	1.58	37.1

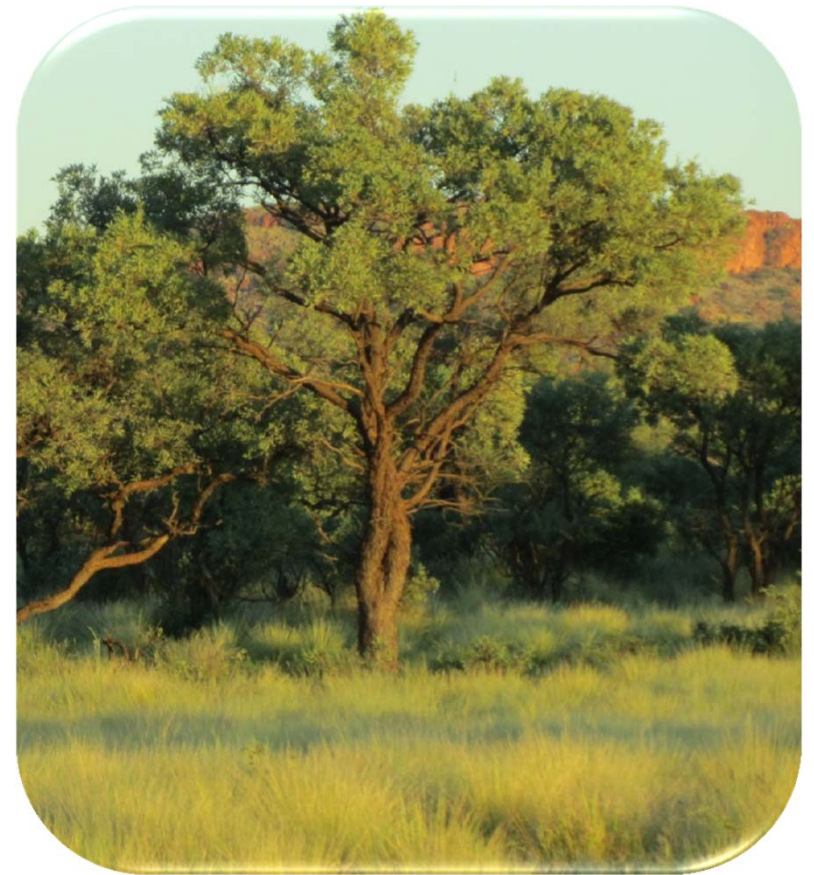
Bismuth

- Some areas of the deposit have elevated bismuth
- Leach tests on the copper concentrate with NaCl and H₂SO₄ addition
- Tests on concentrate with the highest bismuth levels were very successful
- Further bismuth leach evaluation will be conducted.



Sustainability

- Environmental surveys in July 2012 and a contrasting survey in April 2013
- AAPA clearance process is being conducted now
- Preliminary meeting held with Central Land Council (CLC) in 2012. Further meetings planned
- Draft Notice of Intent (NOI) is prepared

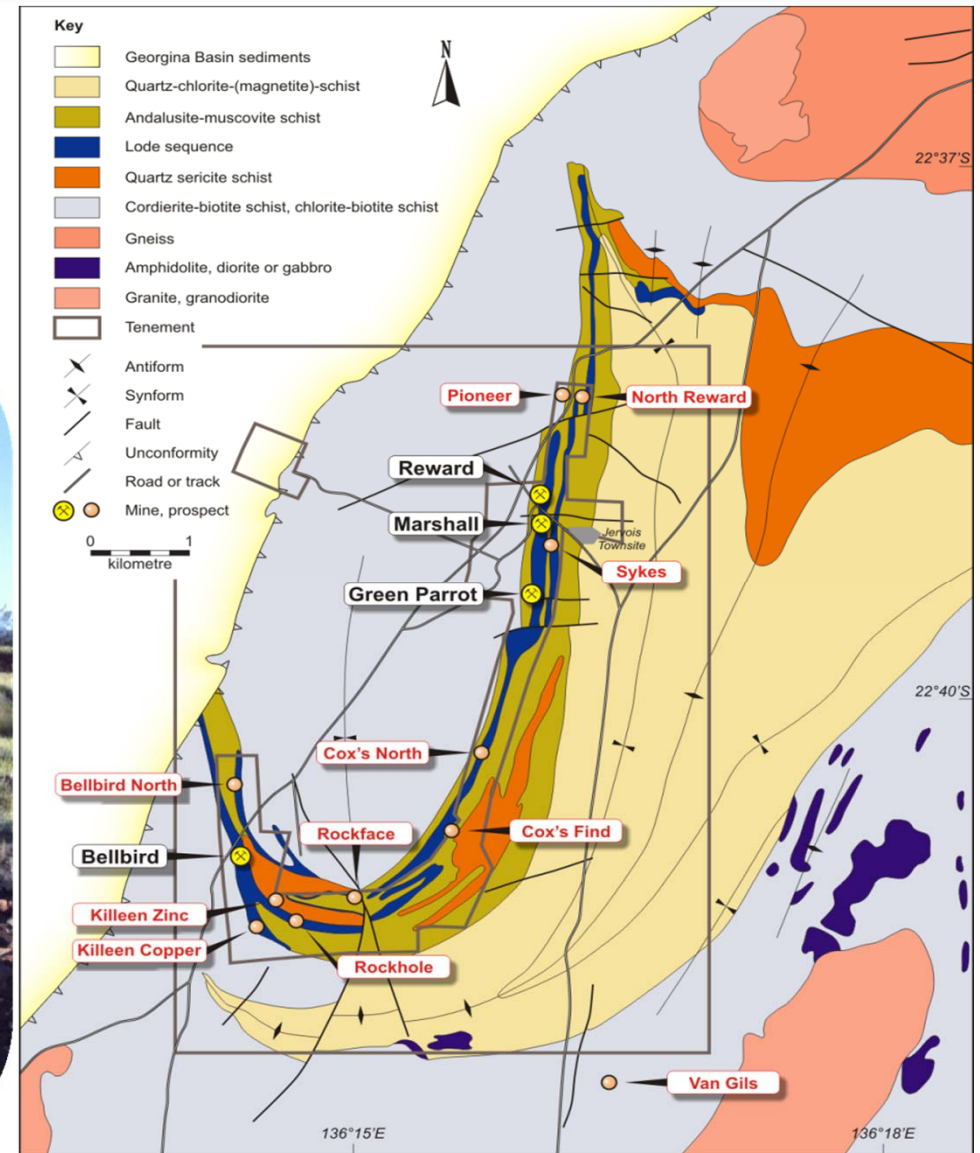


Resource Development

Identified Exploration Potential adjacent to existing resource



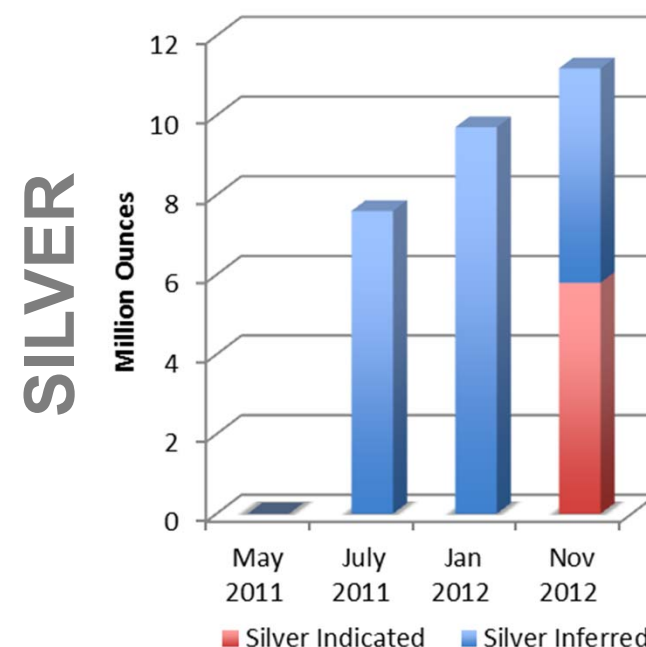
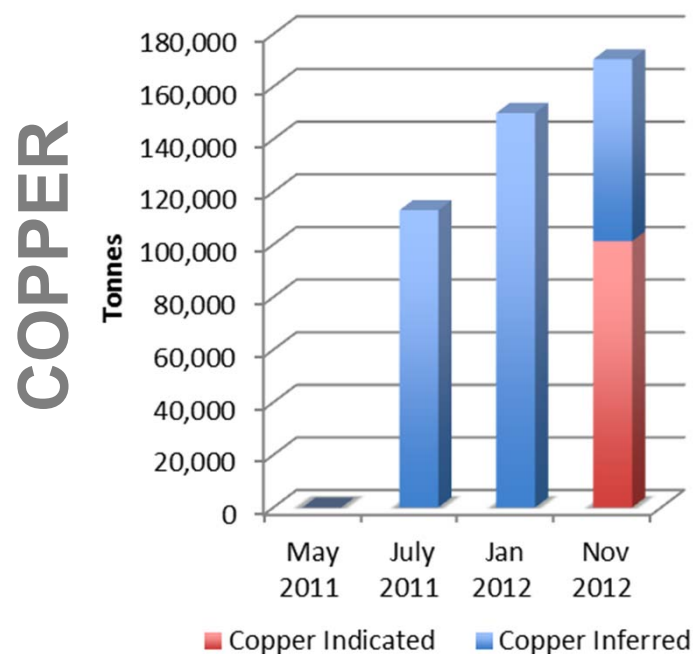
Outcropping Copper Ore



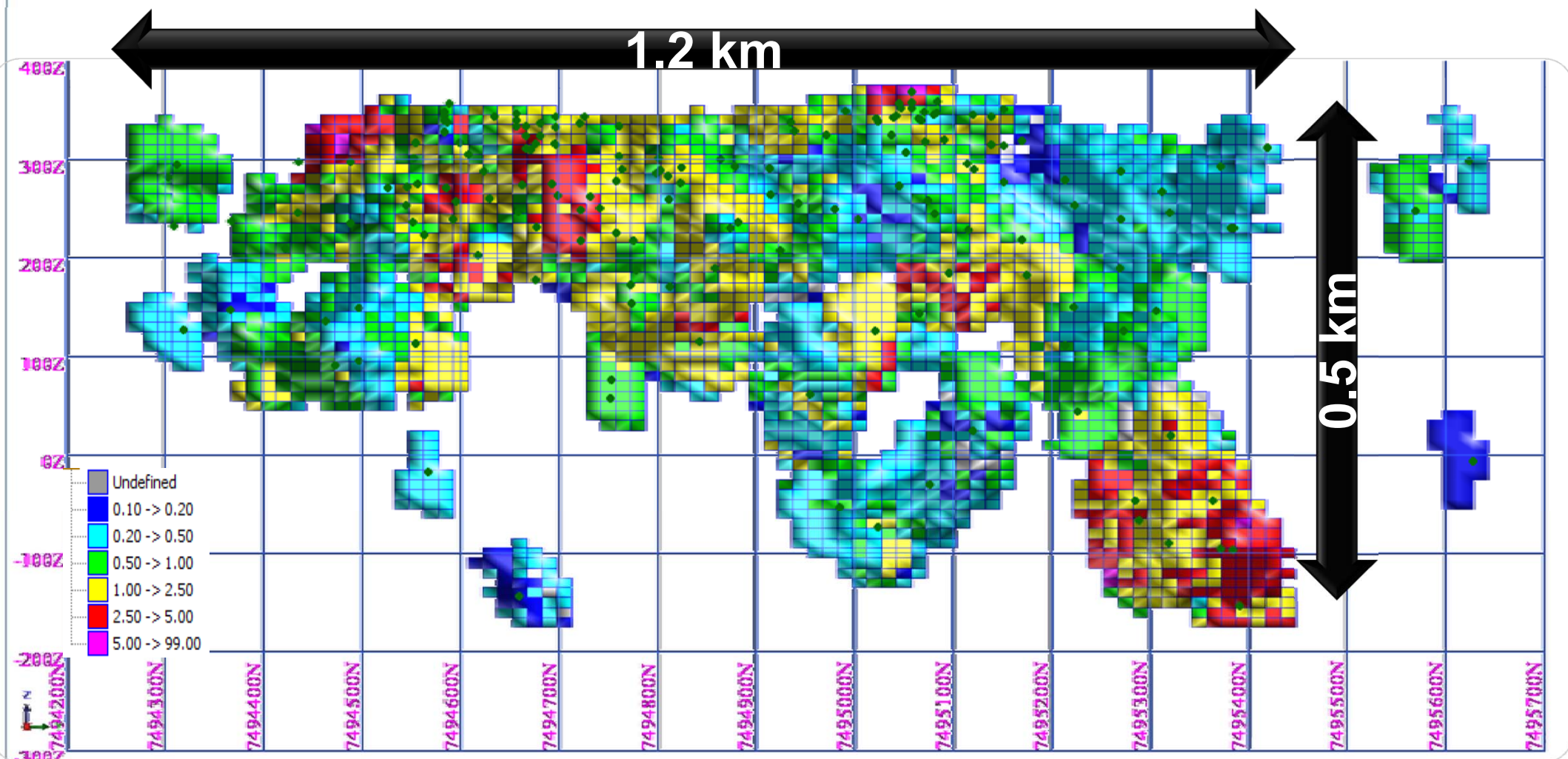
2012 Development drilling

- 13.5Mt @ 1.3% copper 25.8g/t Ag
- 13% increase in contained copper
- 20% increase contained silver
- 69,000oz Gold Resource

Contained Copper	Indicated	Inferred	TOTAL
Marshall/Reward	68,166	43,613	111,779
Bellbird	33,073	16,564	49,637
Green Parrot		7,000	7,000
Bellbird North		2,000	2,000
TOTAL	101,239	69,177	170,416

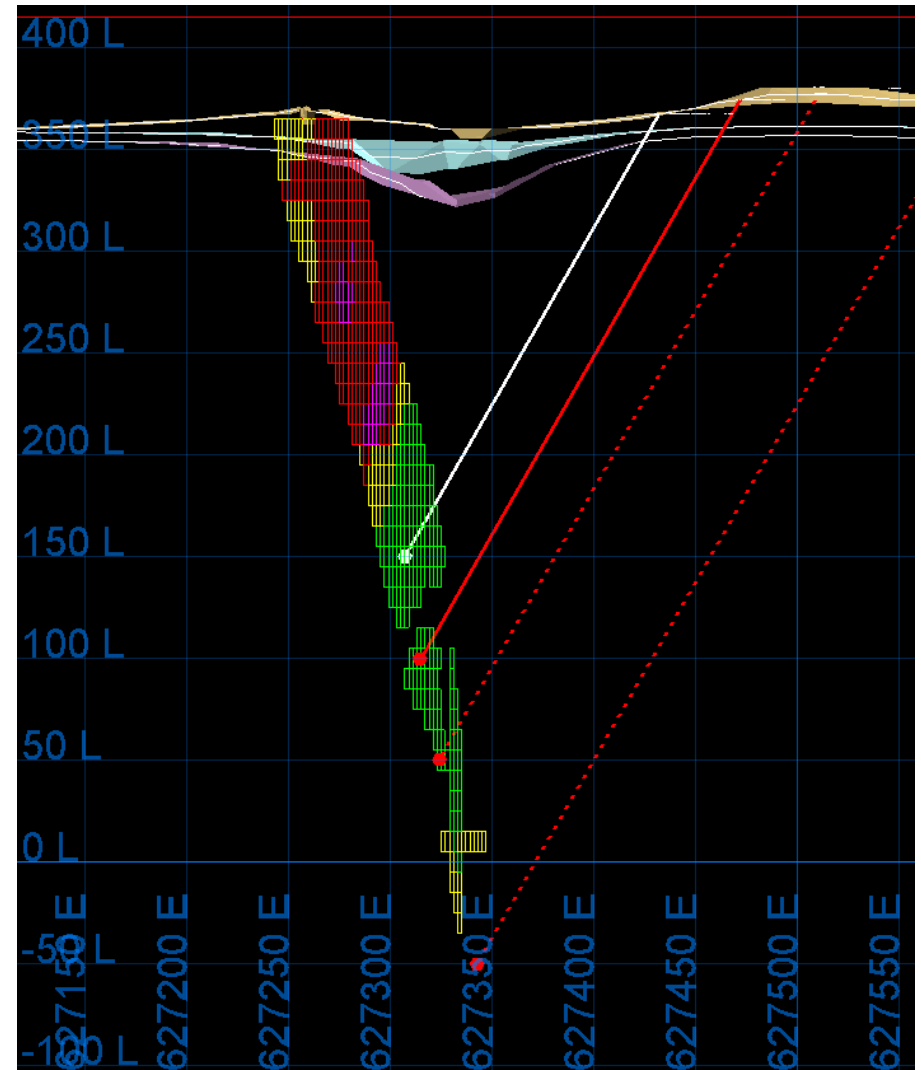


Marshall - Reward Long Section

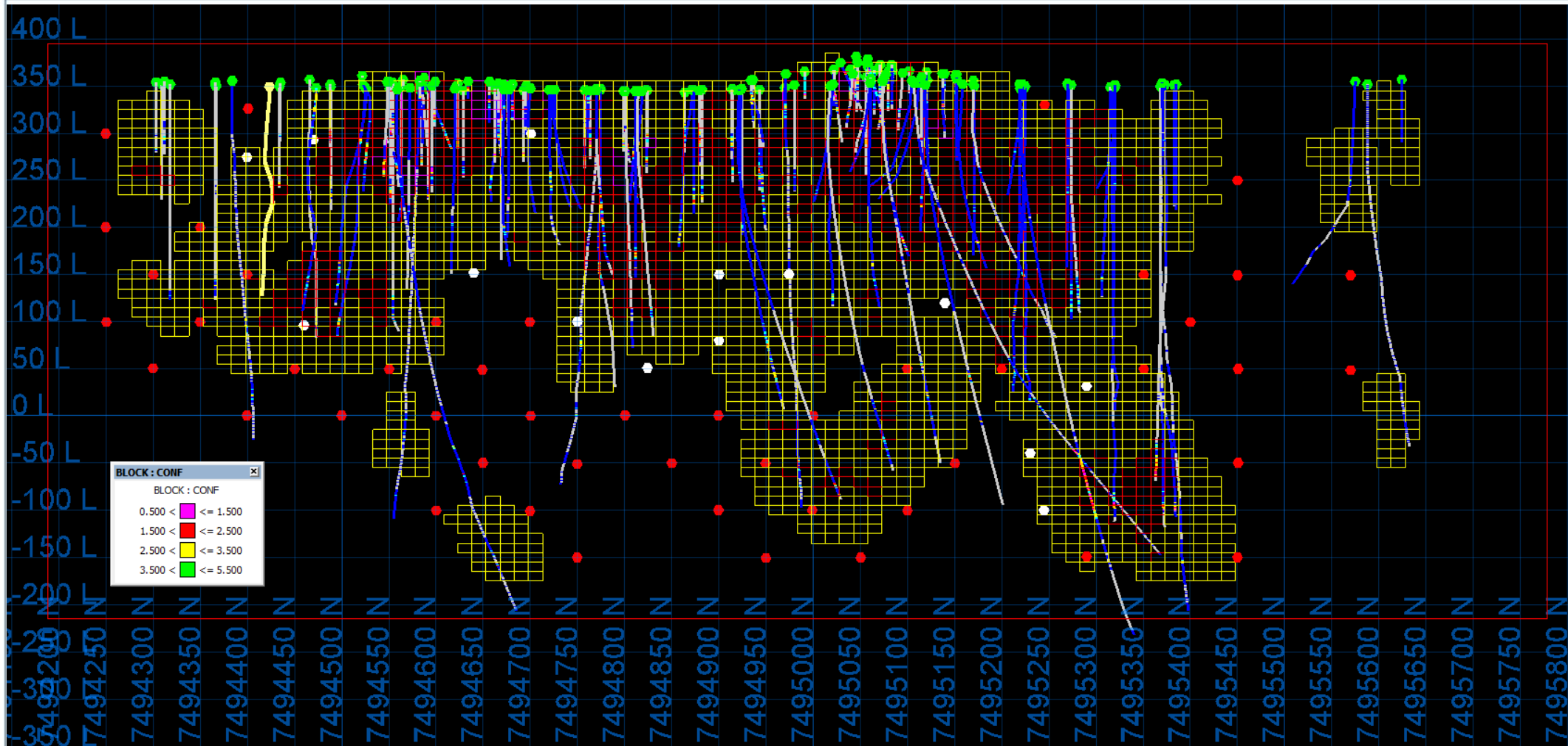


Marshall Reward Drilling

- Step-out drilling targeting significant increase and upgrade of resource
- Program 1 (white)
 - 3,395m RC
 - 1,395m Diamond
- Program 2 (red)
 - Phase 1
 - 7,748m RC
 - 2,950m Diamond
 - Phase 2
 - 5,789m RC
 - 2,754m Diamond

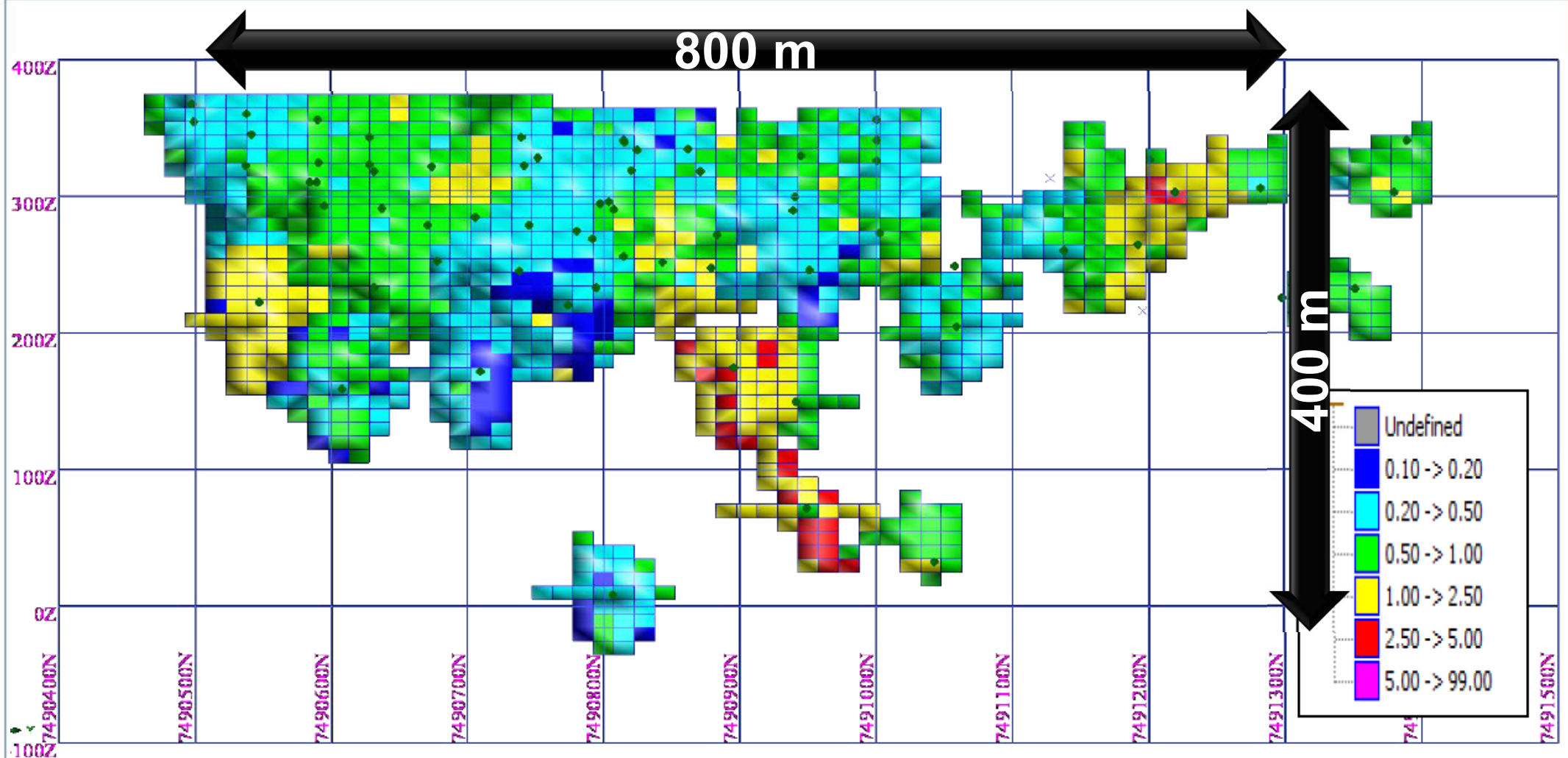


Marshall-Reward Planned Drilling 2013-14



Red blocks – Indicated
Yellow blocks - Inferred

Bellbird Long Section

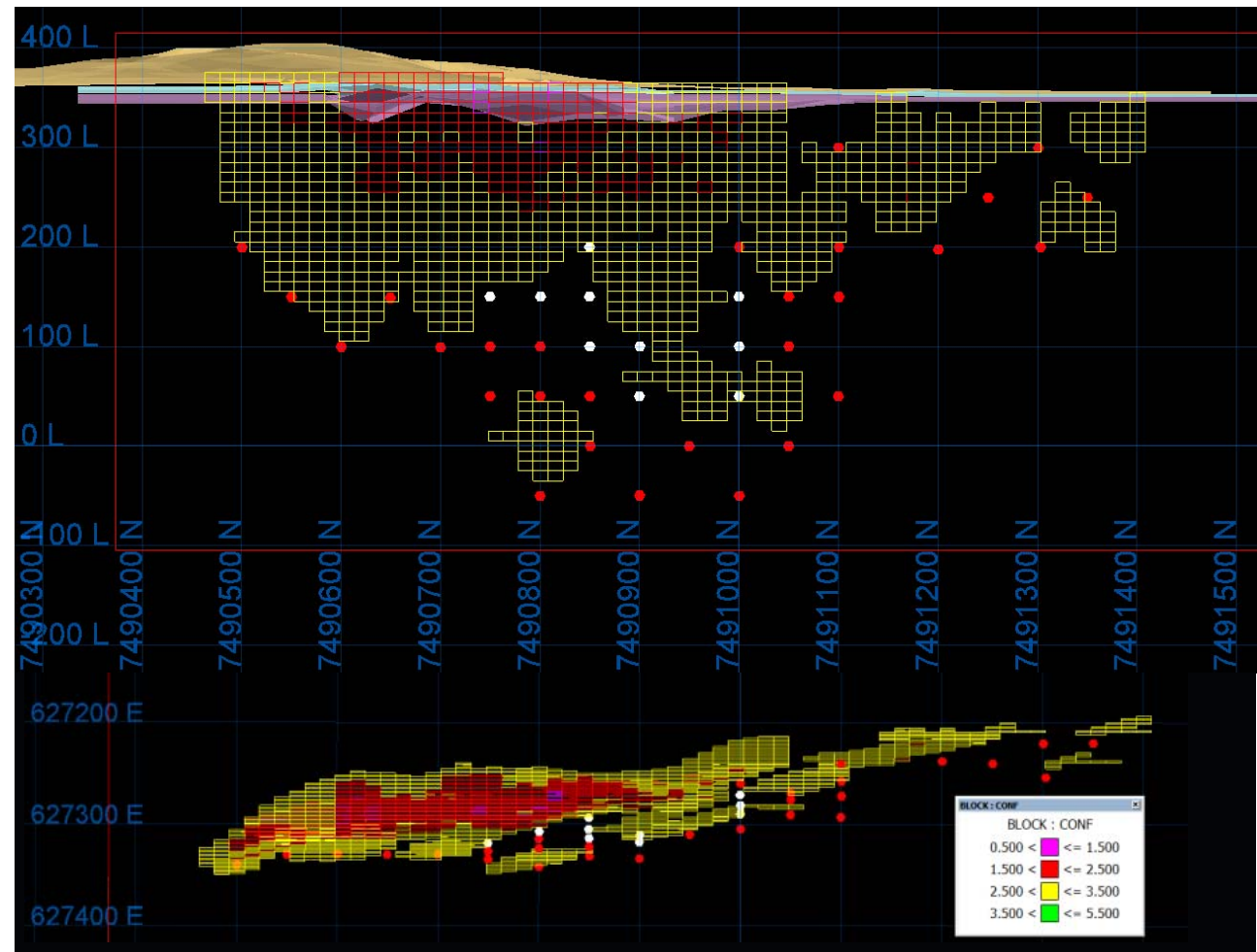


Bellbird Planned Drilling 2013-14

- Previously only 7 holes below 200m
- Program 1 (white)
 - 3,053m RC
 - 210m Diamond
- Program 2 (red)
 - Phase 1
 - 4,037m RC
 - 659m Diamond
 - Phase 2
 - 2,677m RC
 - 1,201m Diamond

Red blocks – Indicated
Yellow blocks - Inferred

Long Section



Plan View

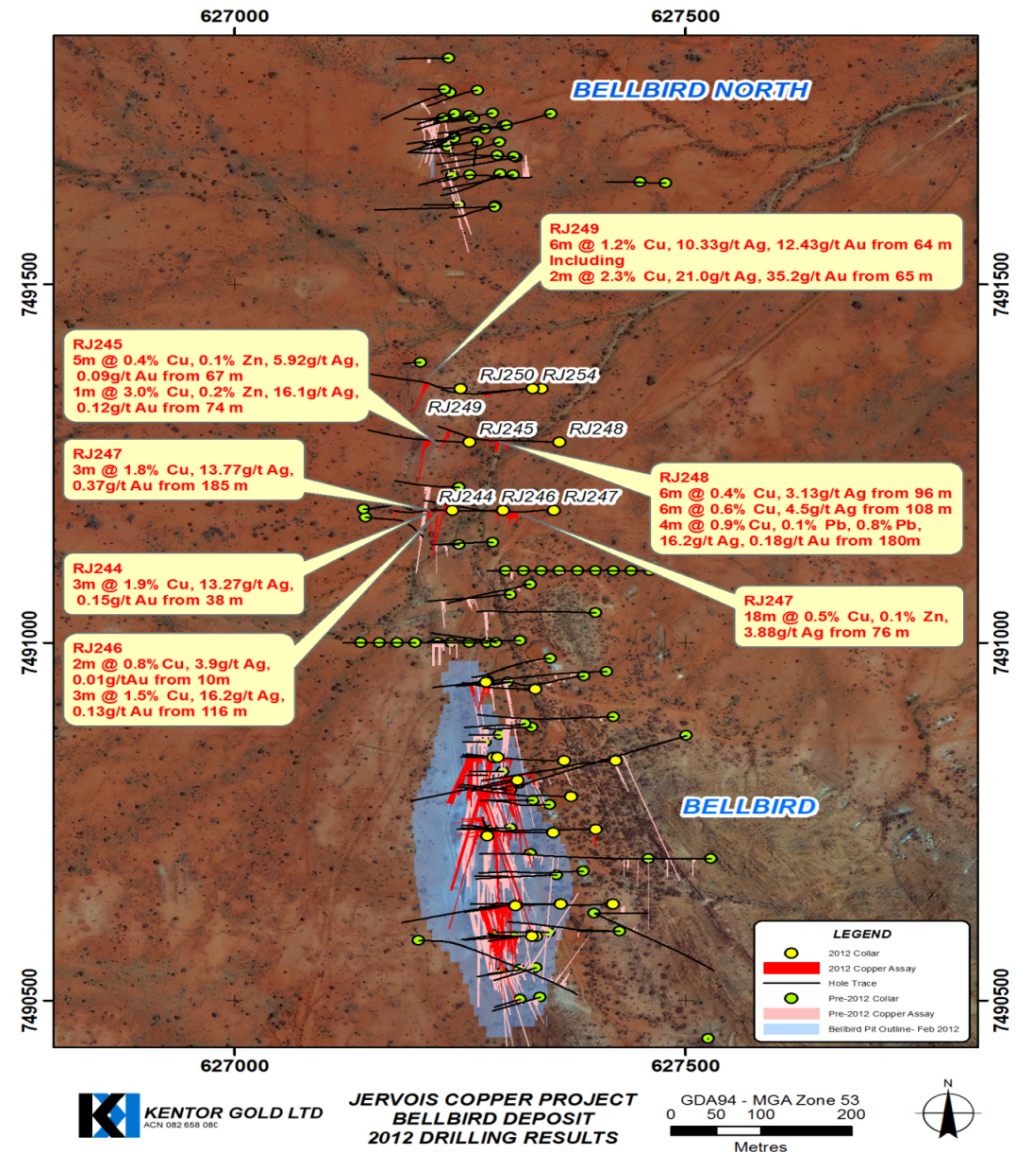
Exploration - Bellbird

2012 Kentor Drilling

Mineralisation open to north

Best gold assays on northern most line

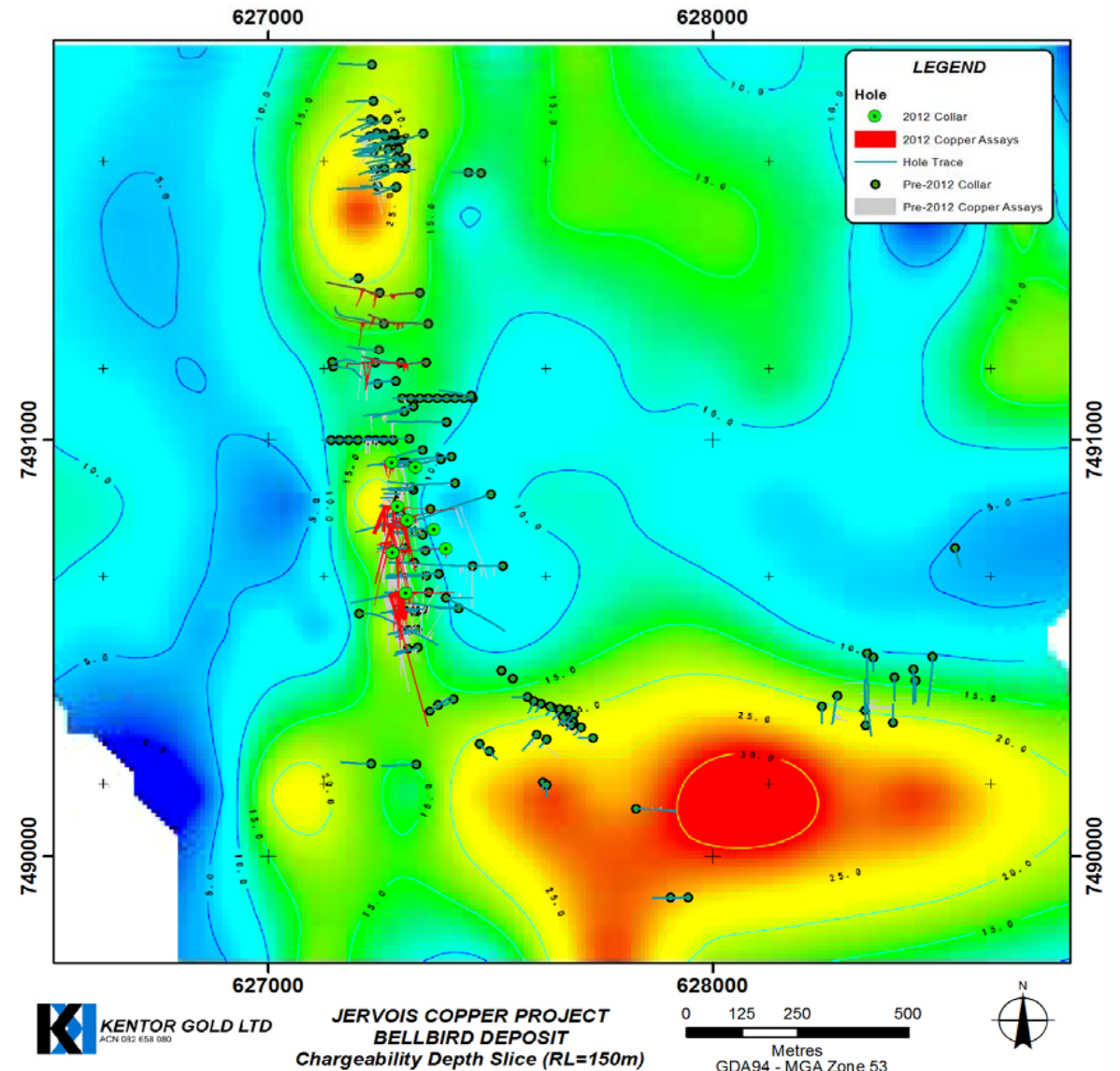
6m @ 1.2% copper, 10.3g/t silver and **12.43g/t** gold from 64 m (down hole), including
2m @ 2.3% copper, 21g/t silver and **35.2g/t** gold from 65 m



Exploration - Bellbird

Geophysics – IP

- MIM completed IP in 1999-2001
- Good correlation between Chargeability and known mineralisation
- Several strong Chargeability anomalies untested



Exploration - Reward North

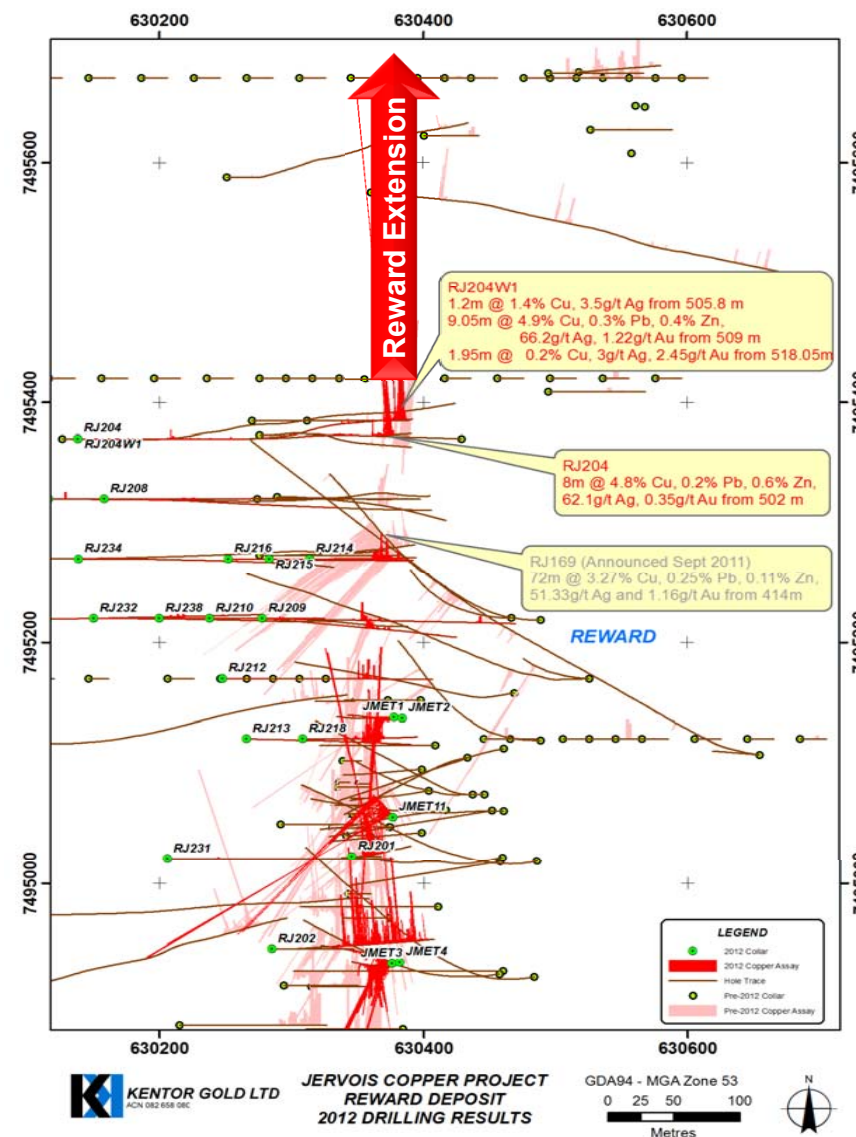
2011 Kentor Drilling

72m @ 3.3% Cu, 51.2 g/t Ag, 1.16 g/t Au from 414m (Hole RJ169)

2012 Kentor Drilling

8.0m @ 4.8% Cu, 62.1g/t Ag, 0.35g/t Au from 502m (Hole RJ204)

9.05m @ 4.9%Cu, 66.2g/t Ag, 1.22g/t Au from 509m (Hole RJ204W1)



Exploration – Marshall & Green Parrot

Green Parrot

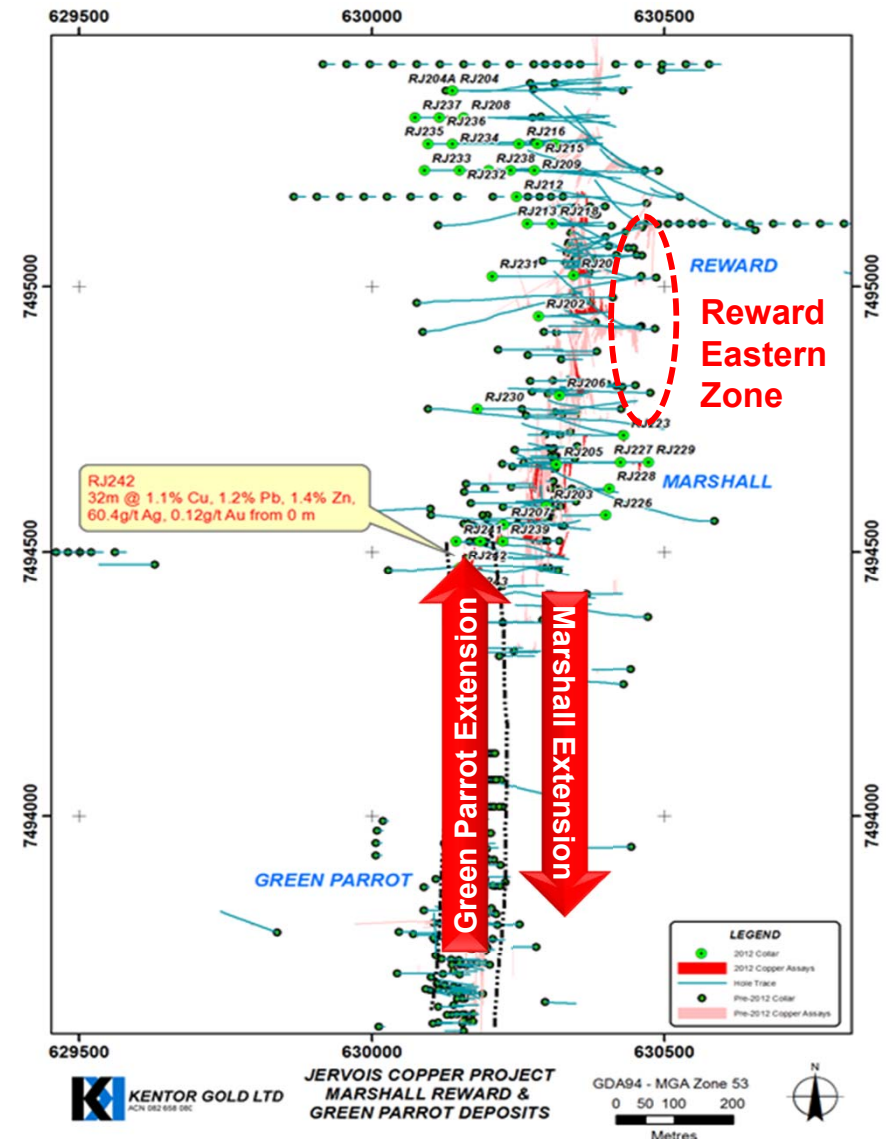
Potential extension to the North
32m @ 1.1% Cu, 1.2% Pb, 1.4% Zn, 60.4 g/t Ag, 0.12g/t Au from surface (Hole RJ242)

Marshall

Potential extension to the South

Reward

Eastern Zone intersected by 3 previous diamond drill holes



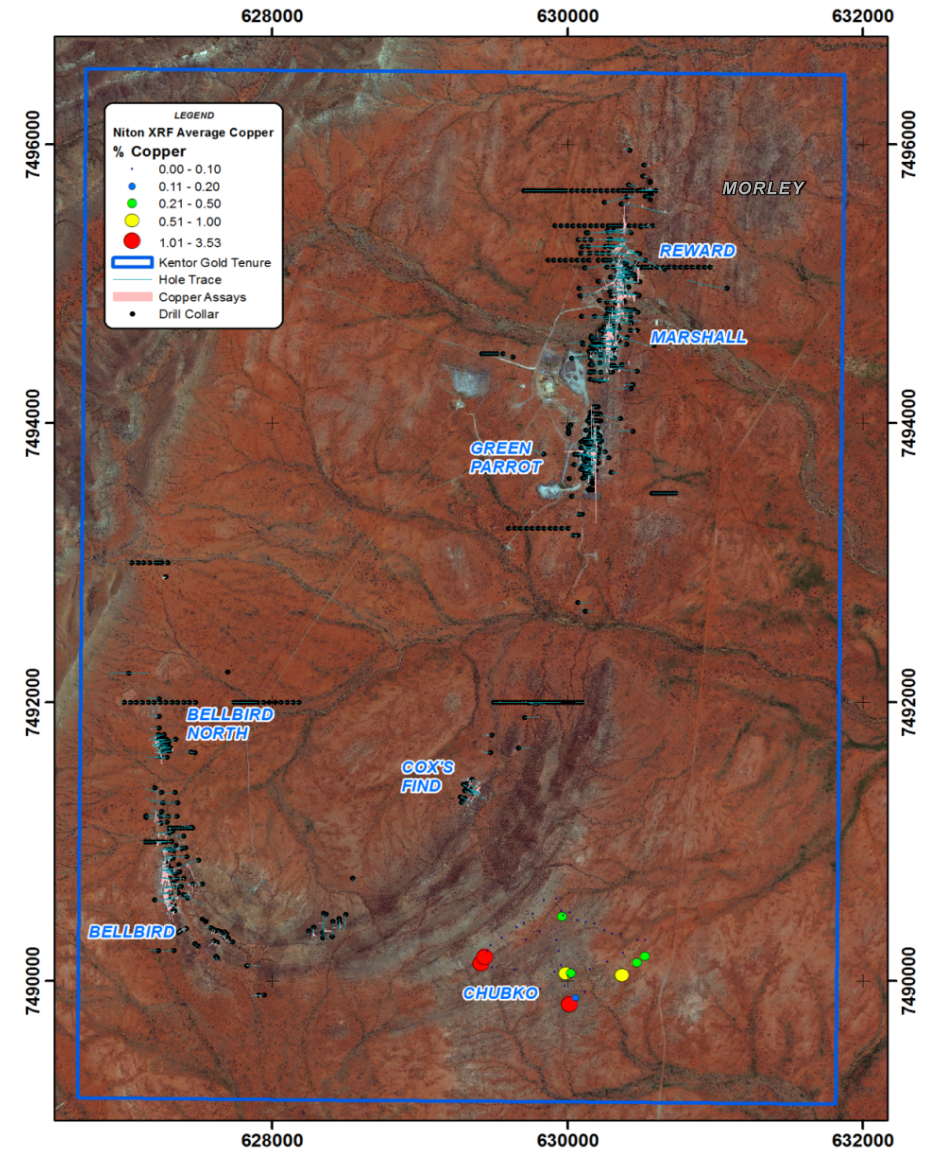
Exploration Potential

Chubko Prospect

- Discovered due to ASTER work conducted by the NTGS in collaboration with the CSIRO led Centre of Excellence for 3D Mineral Mapping
- ASTER (Advanced Space-borne Thermal Emission and Refraction Radiometer)

Morley Prospect

- Field mapping and sampling of outcropping mineralisation



PFS Timetable

ACTIVITY	July	Aug	Sept	Oct	Nov	Dec	2014 Jan	Feb
	Prefeasibility Study (PFS)							DFS →
Environ. Baseline Studies, Impact Assessment								
Environmental Permits & Approvals								
Community & CLC Engagement								
Surveys								
Resource Drilling								
Resource Upgrade								
Mine Design, Planning & Optimisation (incl. Fill and Vent. Studies)								
Waste Dump Engineering								
Metallurgical Flotation Testwork								
Metallurgical Bismuth Leach Testwork								
Oxide Treatment Studies (re. Leach Testwork)								
Process Plant & Infrastructure Engineering/ Est.								
Transport & Logistics								
Marketing								
Financial Modelling								
PFS Report								

Jervois – The future

- Drilling planned to commence Aug 2013
- Targeting a significant increase in Resource
- Resource update targeted for Dec 2014
- Further exploration drilling to test high priority targets
- Scoping study of oxide copper resource
- Complete Pre-Feasibility Study Jan 2014
- Definitive Feasibility Study



For more information contact

Simon Milroy on +61 7 3071 9003

or visit www.kentorgold.com

ASX Code: KGL

Level 9, 40 Creek Street,
Brisbane, QLD, AUSTRALIA 4000

Fax: +61 7 3071 9008

Forward-Looking Statements:

This presentation includes certain “Forward-Looking Statements”. All statements, other than statements of historical fact, included herein, including without limitation, statements regarding forecast cash flows and potential mineralisation, resources and reserves, exploration results and future expansion plans and development objectives of Kentor Gold Limited are forward-looking statements that involve various risks and uncertainties. There can be no assurance that such statements will prove to be accurate and actual results and future events could differ materially from those anticipated in such statements.

Competent Persons Statements

- The data in this report that relates to Mineral Resource Estimates for Jervois is based on information evaluated by Mr Simon Tear who is a Member of The Australasian Institute of Mining and Metallurgy (MAusIMM) and who has sufficient experience relevant to the style of mineralisation and type of deposit under consideration and to the activity which he is undertaking to qualify as a Competent Person as defined in the 2004 Edition of the Australasian Code for Reporting of Exploration Results, Mineral Resources and Ore Reserves (the “JORC Code”). Mr Tear is a full-time employee of Hellman & Schofield Pty Ltd and he consents to the inclusion in the report of the Mineral Resource in the form and context in which they appear.
- The exploration data in this report relating to the Jervois project is based on information compiled by Rudy Lennartz, who is a member of the Australian Institute of Mining and Metallurgy and a full time employee of Jinka Minerals Ltd. Mr. Lennartz has sufficient experience which is relevant to the style of the mineralisation and the type of deposit under consideration and to the activity to which he is undertaking, to qualify as a Competent Person as defined in the 2004 Edition of the Australasian Code for Reporting of Exploration Results, Mineral Resources and Ore Reserves. Mr. Lennartz has consented to the inclusion of this information in the form and context in which it appears in this report.