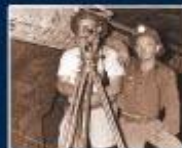




Bringing New Technology

to Gold Exploration in Tennant Creek



Rob Bills – MD & CEO

Important Notice and Disclaimer

This presentation has been prepared by Emmerson Resources Limited ACN 117 086 745 (ASX: **ERM**) (the “**Company**”) and is being provided to a limited number of investors for the sole purpose of providing preliminary background information to enable recipients to review the business activities of the Company. It is not intended as an offer, invitation, solicitation or recommendation with respect to the purchase or sale of any securities.

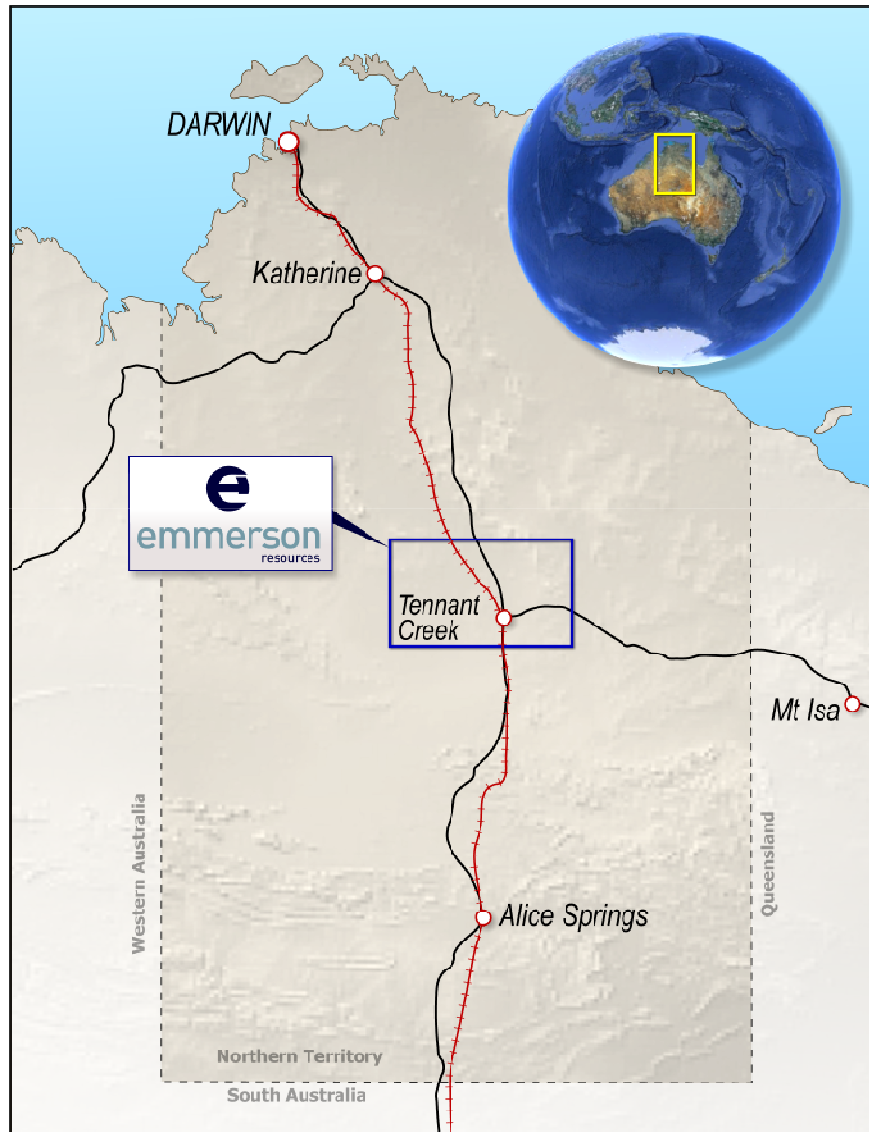
This presentation should not be relied upon as a representation of any matter that a potential investor should consider in evaluating the Company. The Company, nor any of its directors, agents, officers, employees or affiliates does not make any representation or warranty, express or implied, as to or endorsement of, the accuracy or completeness of any information, statements, representations or forecasts contained in this presentation, and they do not accept any liability for any statement made in, or omitted from, this presentation.

Prospective investors should make their own independent evaluation of an investment in the Company.

Nothing in this presentation should be construed as a financial product advice, whether personal or general, for the purposes of Section 766B of the Corporations Act. This presentation consists purely of factual information and does not involve or imply a recommendation or a statement of opinion in respect of whether to buy, sell or hold a financial product. The Company has not considered any of your objectives, financial situation or needs.

This presentation and contents has been made available in confidence and may not be reproduced or disclosed to third parties or made public in any way without the express written permission of the Company.

Distinguishing Features of Emmerson



Dominant Ground Position

2800sqkm over the TCMF

High Grade Gold & Copper

Historically 15-20g/t Au, 2-4% Cu

Processing Plant

Only gold mill in the region on care and maintenance, with good roads, power

Current Resources

Currently 6.6mt at 1.8% copper & 0.7g/t gold

New Resources

High grade gold resource - TBA

Big Exploration Targets

- 24m @ 4% Copper
- 12m @ 16.9g/t gold & 2% copper inc. 4m @ 37.4g/t gold
- 99m at 0.43% copper plus new gold zone

Grade is King.....



Tennant Creek (Then)

- Australia's Highest Gold grades
- Long production history
- Prospector and magnetic geophysics



Tennant Creek (Now)

- High-Tech approach
- Multi disciplinary & systematic
- Aggressive drilling
- Discovery of a new style of deposit



2013 Strategy

- Expand current resources/reserves
- Discovery of new deposits

Board of Directors



Mr. Andrew McIlwain B.Eng (Mining)
Non-Executive Chairman



Mr. Robert Bills B.Sc, M.Sc
Managing Director and Chief Executive Officer



Mr. Tim Kestell B.Com
Non-Executive Director



Mr. Simon Andrew B.Sc (Honours)
Non-Executive Director

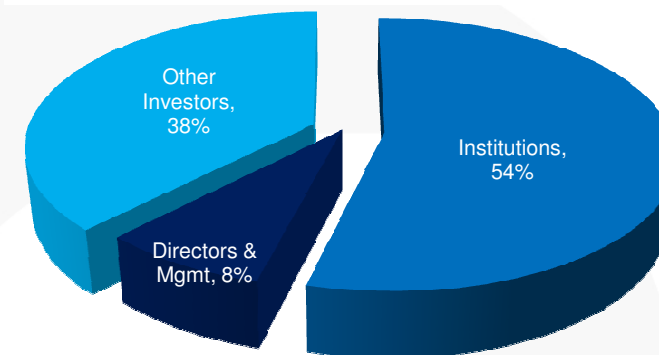
Capital Structure

Emmerson Resources Limited (ASX: ERM)

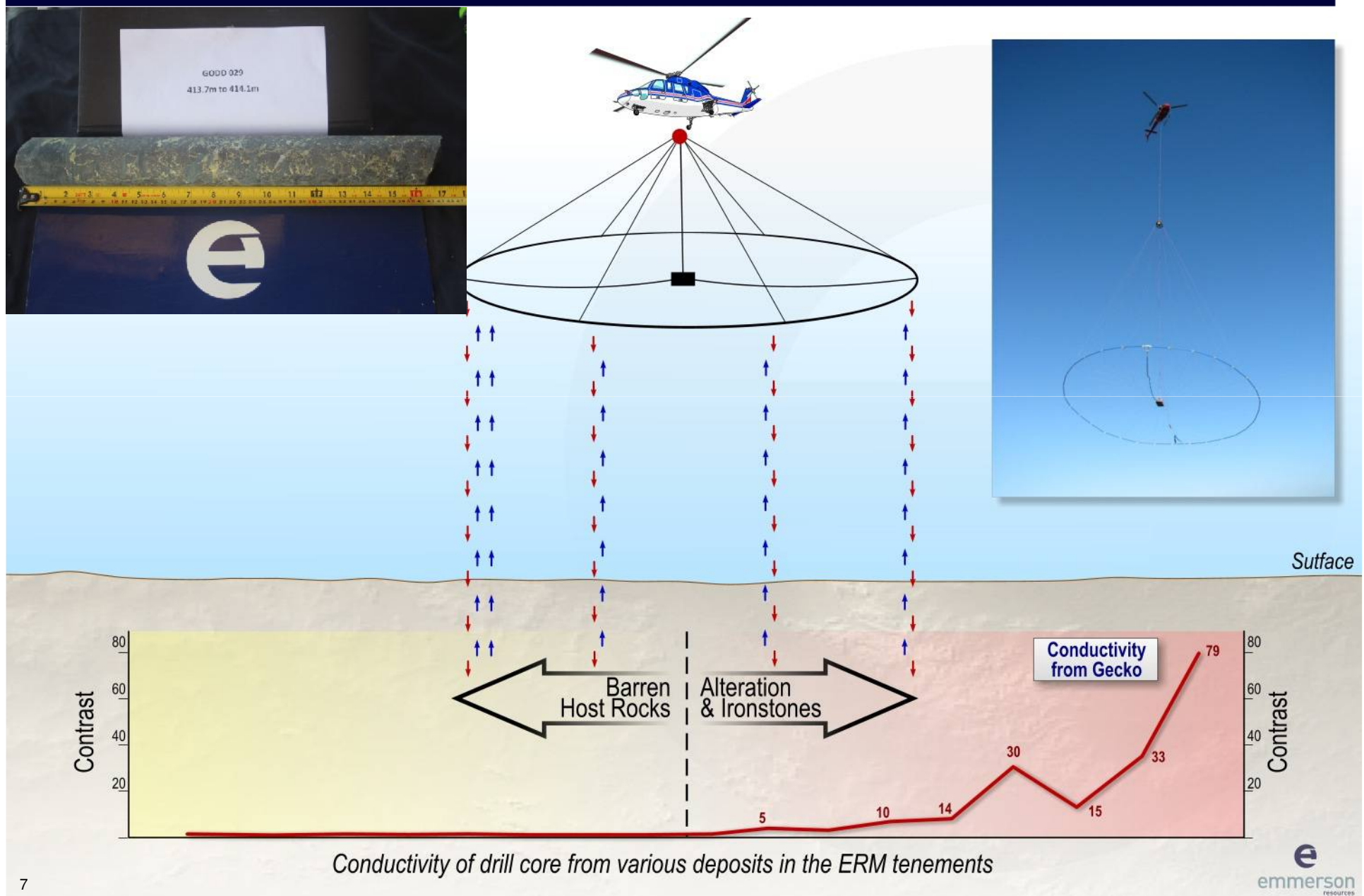
Shares on Issue ¹	261,210,213
Market Cap. (at \$0.04)	\$10.4 million
Cash (30 September 2013)	\$1.9 million
Debt	Nil
Enterprise Value	\$8.5 million

1. Excludes 3,575,000 employee performance rights

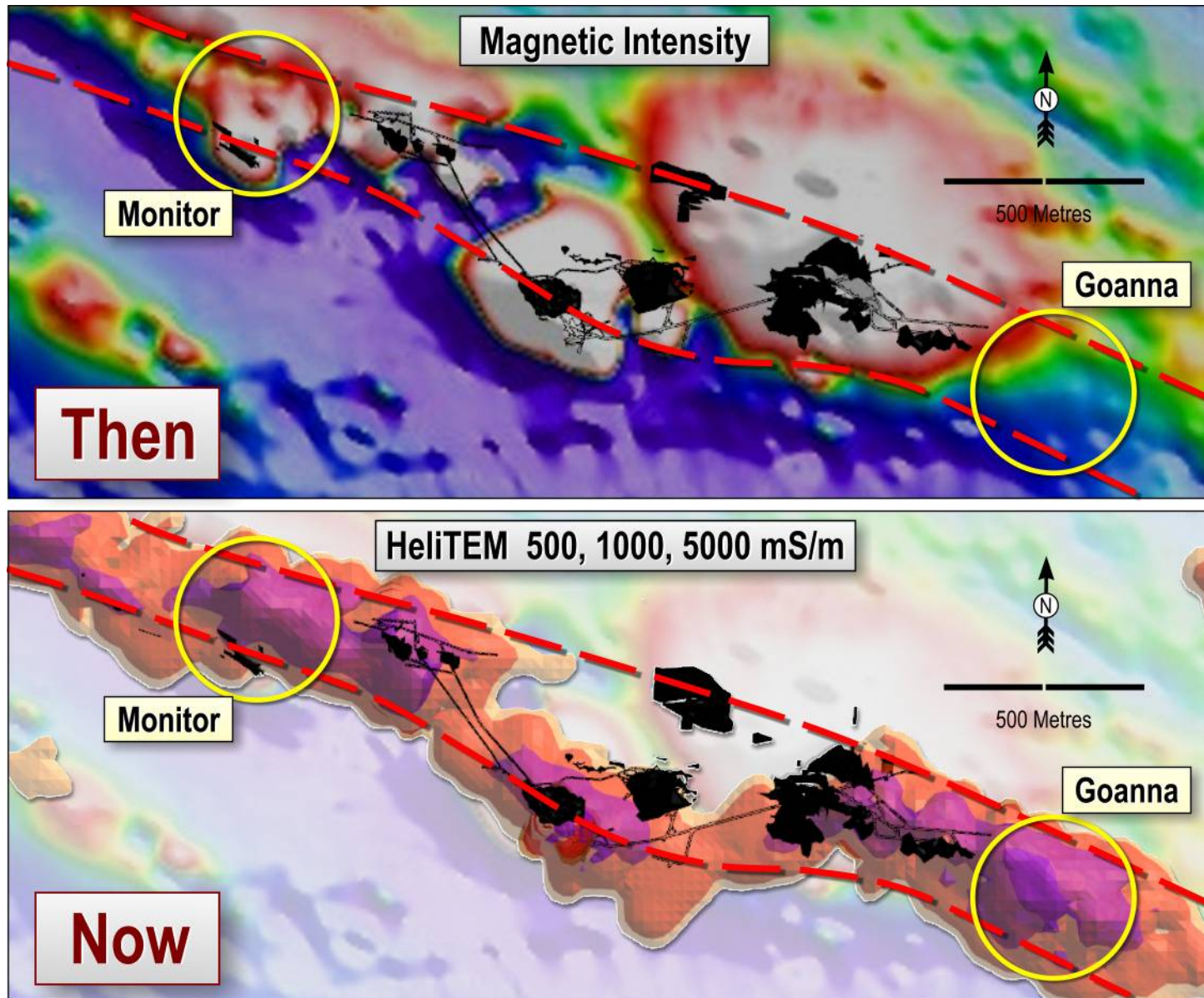
Shareholders



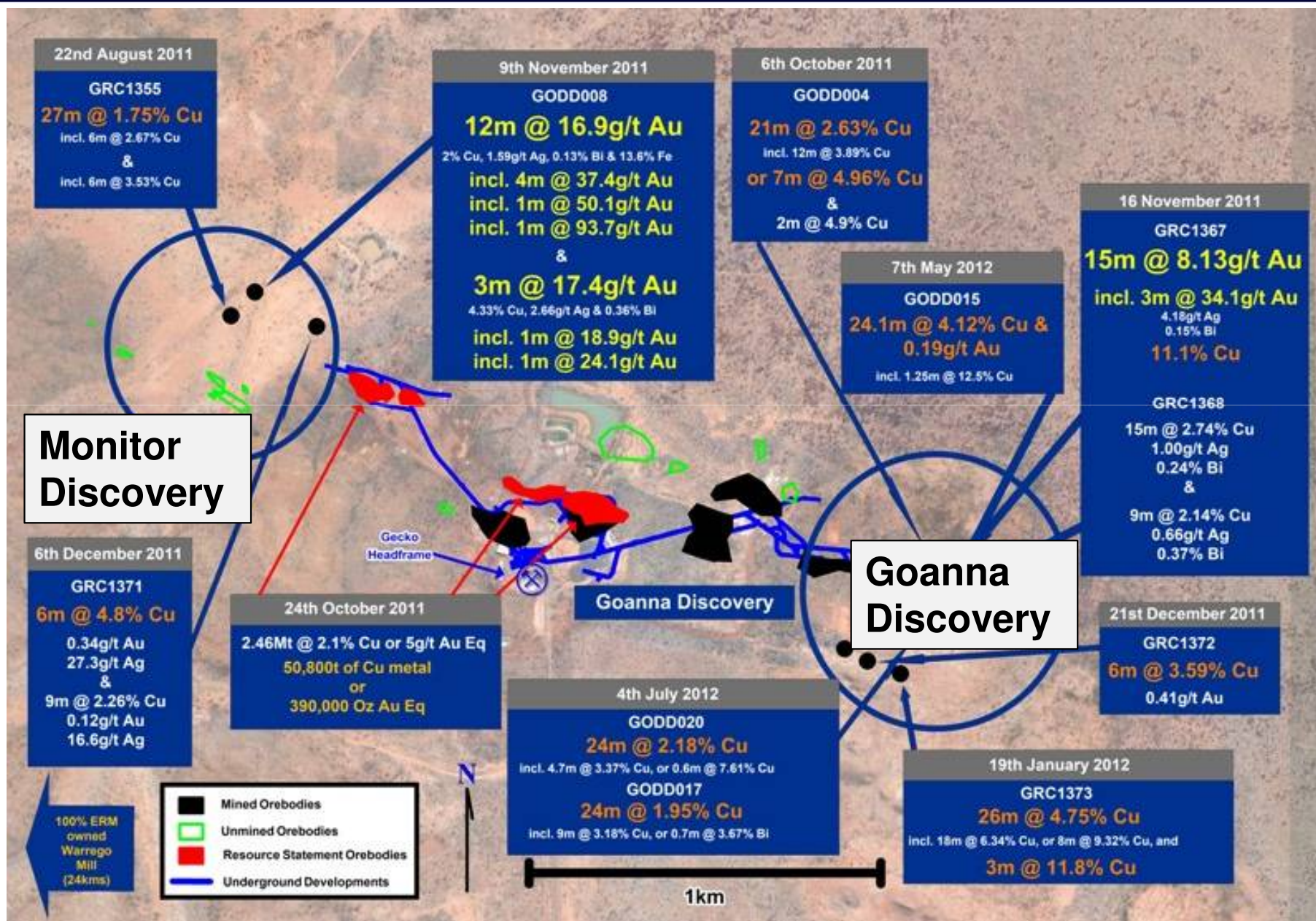
New Technology - airborne EM a more direct targeting tool



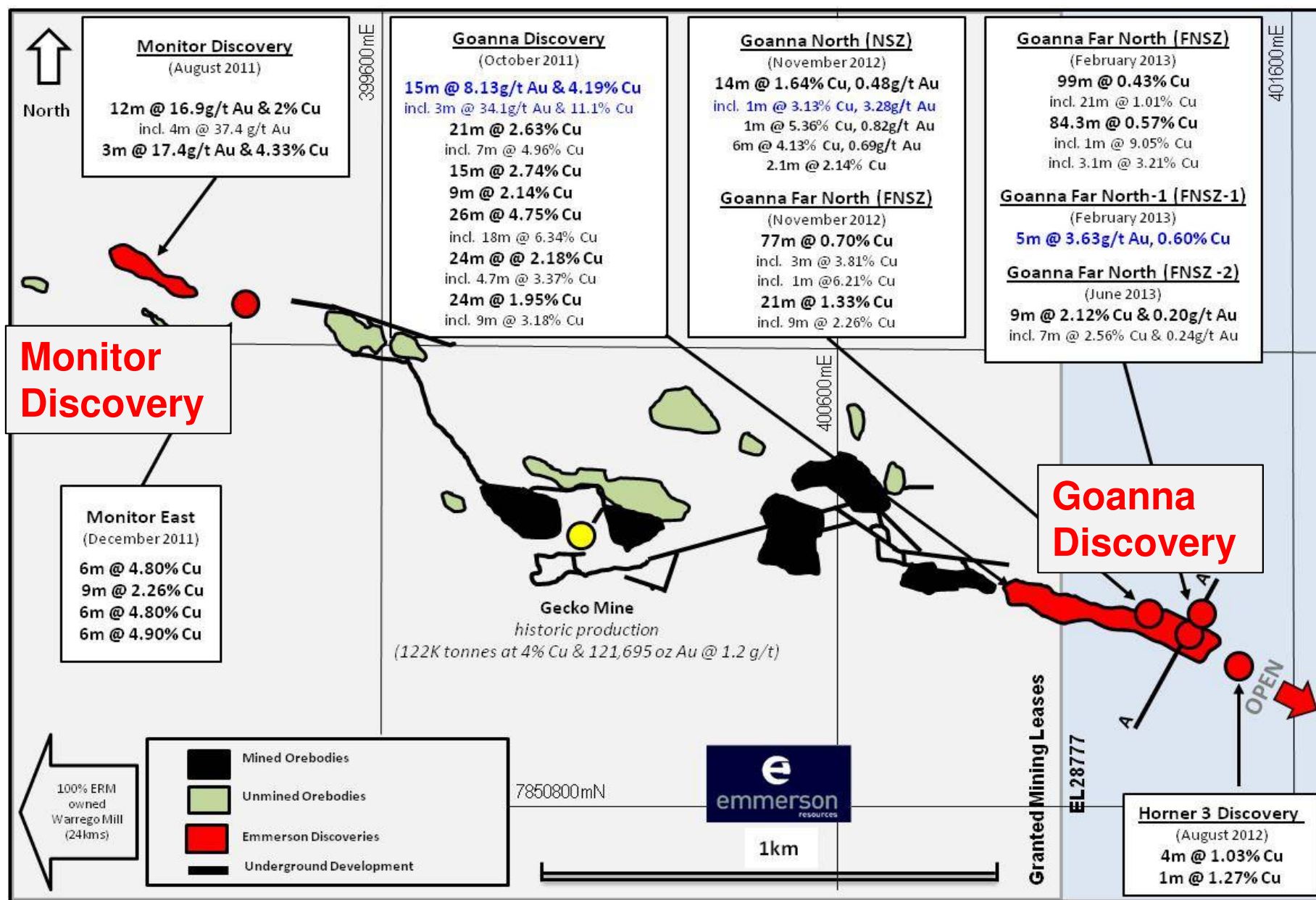
Seeing what others have not seen



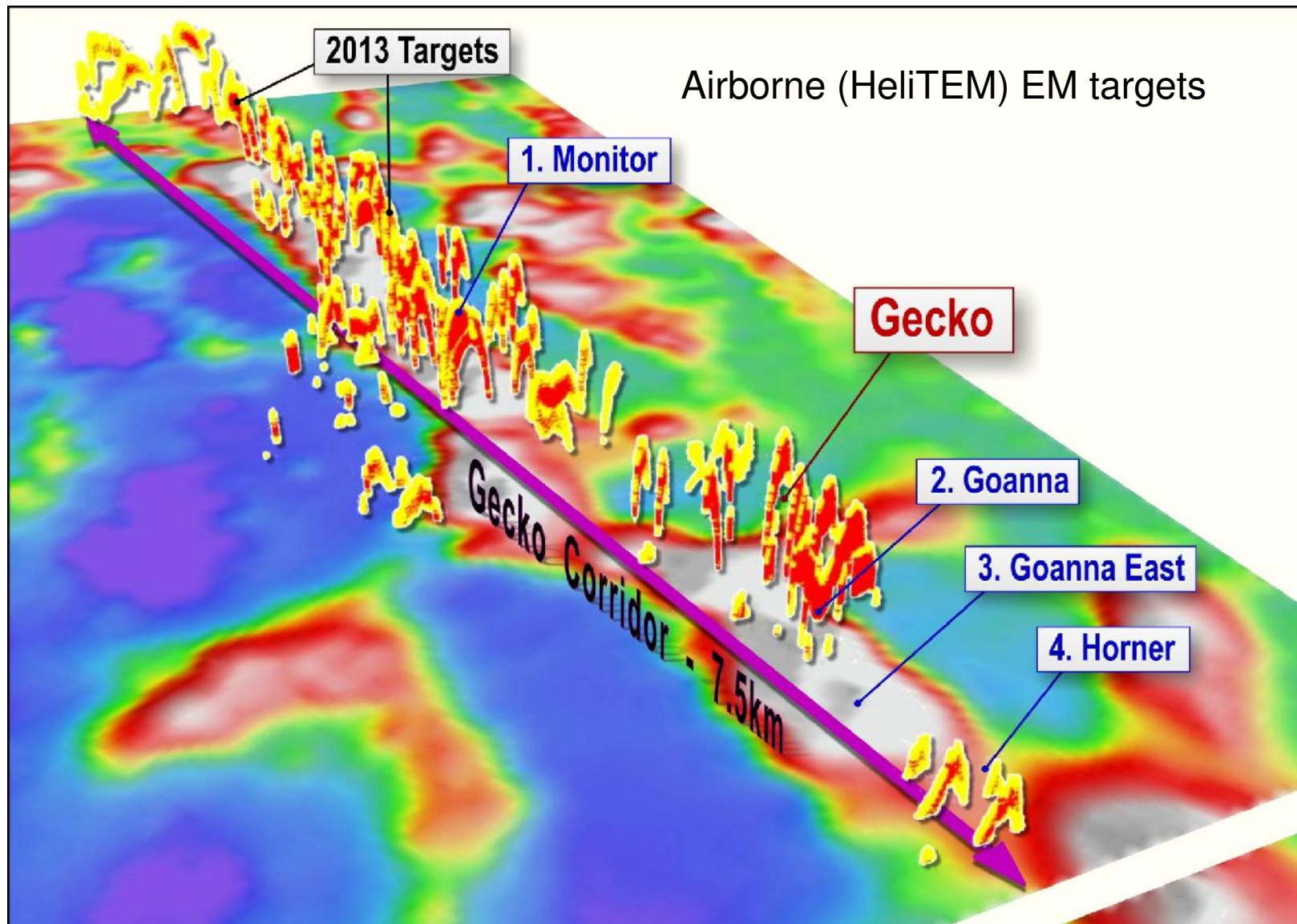
New Technology finds two new deposits...more to come



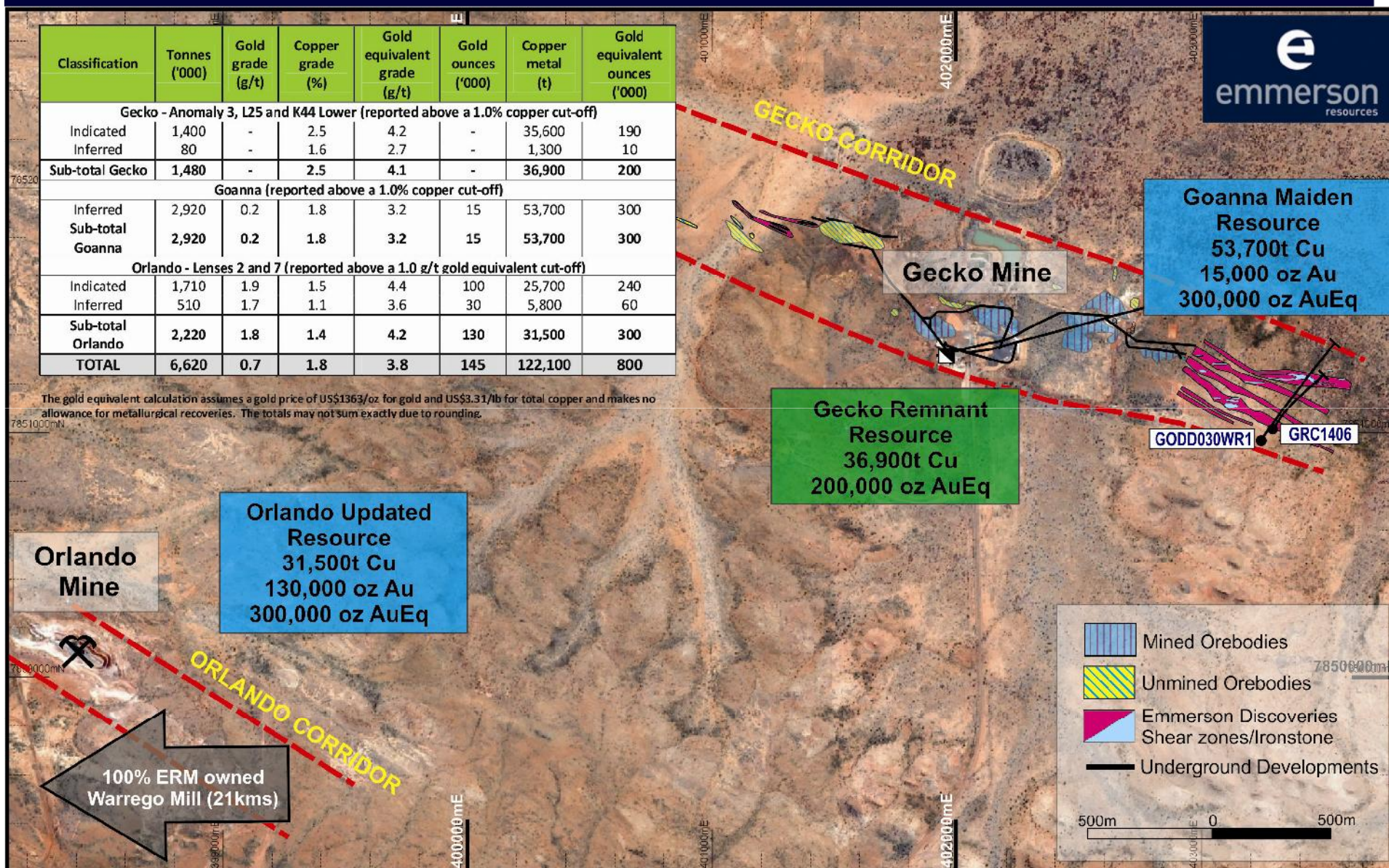
Latest Drill Results....



New Technologymultiple untested targets



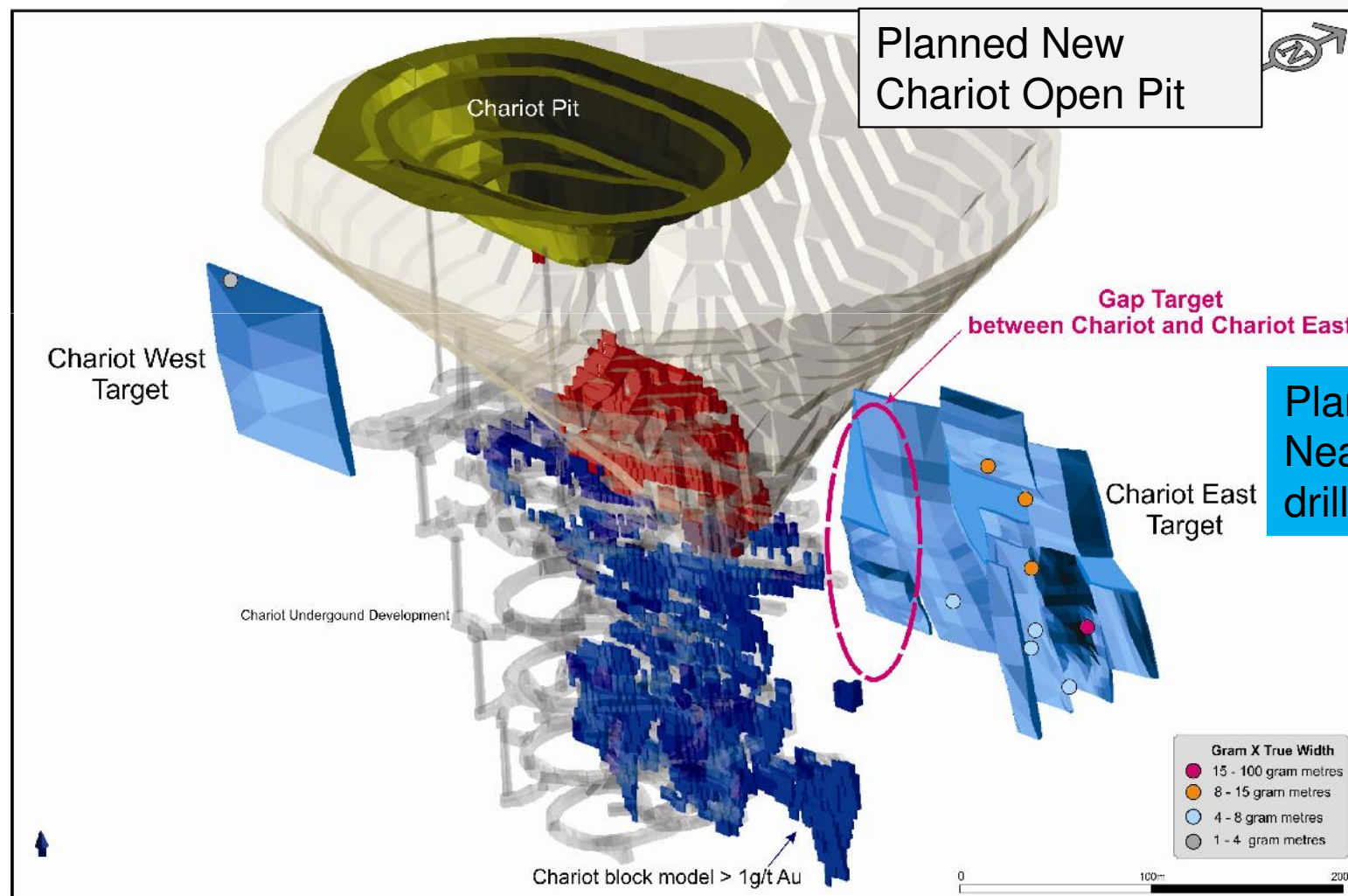
Discoveries + Resources = Value



Resources 6.6Mt at 1.8% Cu & 0.7g/t Au (122,000t Cu metal+145,000oz Au)

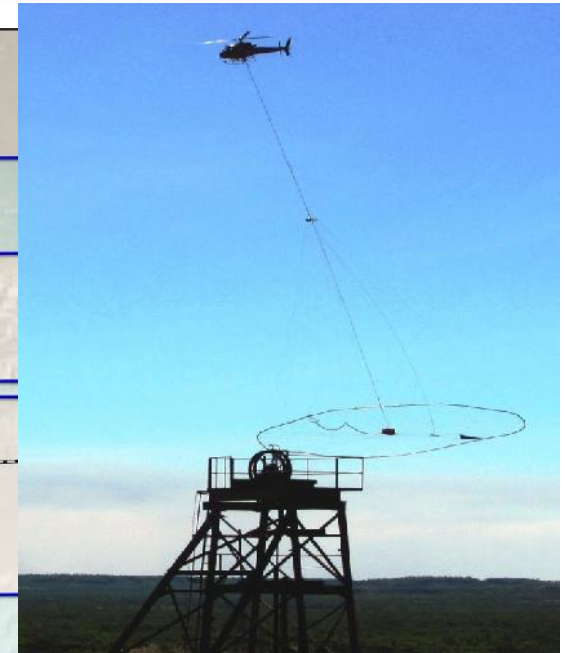
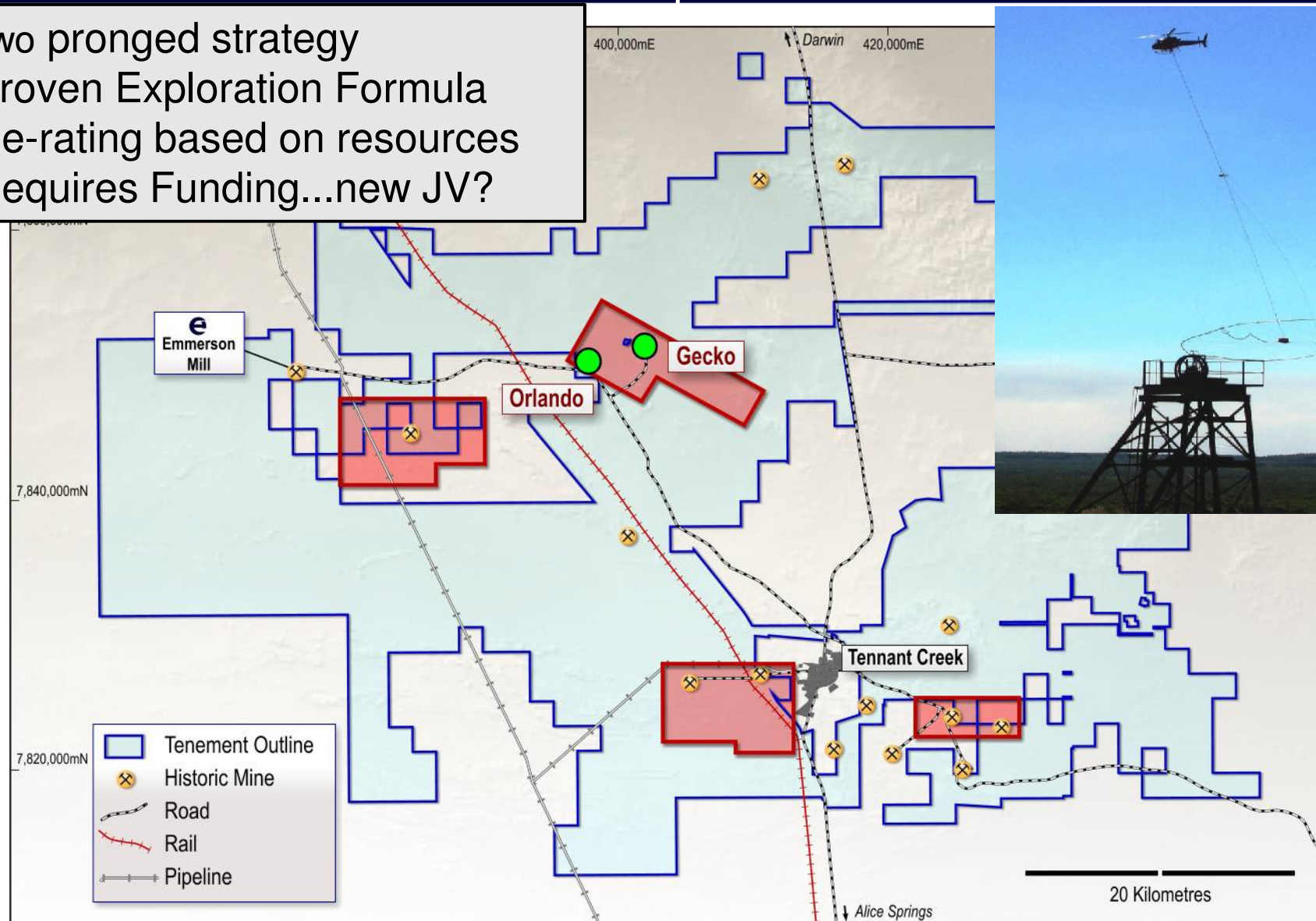
Non JORC Resources - 1.02Mt at 5.54% Cu and 5.1g/t gold (46,500t Cu metal + 168,000ozs Au)

New Chariot Resourceto be released shortly



First time the Tennant Creek Field has been explored with modern techniques

- Two pronged strategy
- Proven Exploration Formula
- Re-rating based on resources
- Requires Funding...new JV?



Success through continued discovery and teamwork



www.emmersonresources.com.au

Competency Statement

The information in this report relating to Exploration Results and Mineral Resources is based on information compiled by Mr Steve Russell who is a Member of the Australian Institute of Geoscientists and has sufficient exploration experience which is relevant to the style of mineralization under consideration to qualify as a Competent Person as defined in the 2004 Edition of the 'Australasian Code for Reporting of Exploration Results, Mineral Resources and Ore Reserves'.

Mr Russell is a full time employee of Emmerson Resources Ltd. Mr Russell consents to the inclusion in the report of the matters based on his information in the form and context in which it appears.