



Paydirt's Gold Conference

Perth April 2012

Les Davis - Managing Director

ASX: SLR

ABN: 38 108 779 782

www.silverlakeresources.com.au

Important Notice and Disclaimer



Silver Lake Resources Limited has prepared this presentation based on information available to it. No representation or warranty, express or implied, is made as to the fairness, accuracy, completeness or correctness of the information, opinions and conclusions contained in this presentation.

All dollar terms expressed in this presentation are in Australian dollars unless otherwise stated.

To the maximum extent permitted by law, none of Silver Lake Resources Limited, its directors, employees or agents, advisers, nor any other person accepts any liability, including, without limitation, any liability arising from fault or negligence on the part of any of them or any other person, for any loss arising from the use of this presentation or its contents or otherwise arising in connection with it.

This presentation is not an offer, invitation, solicitation or other recommendation with respect to the subscription for, purchase or sale of any security, and neither this presentation nor anything in it shall form the basis of any contract or commitment whatsoever. This presentation may contain forward looking statements that are subject to risk factors associated with gold exploration, mining and production businesses. It is believed that the expectations reflected in these statements are reasonable but they may be affected by a variety of variables and changes in underlying assumptions which could cause actual results or trends to differ materially, including but not limited to price fluctuations, actual demand, currency fluctuations, drilling and production results, reserve estimations, loss of market, industry competition, environmental risks, physical risks, legislative, fiscal and regulatory changes, economic and financial market conditions in various countries and regions, political risks, project delay or advancement, approvals and cost estimates.

The information in this presentation that relates to mineral resources and exploration results are based on information compiled by Mr Christopher Banasik who is a Member of the Australasian Institute of Mining and Metallurgy. Any statement herein, direct or implied, as to a potential gold deposit is conceptual in nature and a reference to the targeted gold potential and not to any JORC compliant Mineral Resource. Mr Banasik is a full time employee of Silver Lake Resources Ltd, and has sufficient experience which is relevant to the style of mineralisation under consideration to qualify as a Competent Person as defined in the 2004 edition of the JORC Code. Mr Banasik has given his consent to the inclusion in this presentation of the matters based on the information in the form and context in which it appears.

The information in this presentation that relates to exploration and production targets refers to targets that are conceptual in nature, where there has been insufficient exploration to define a Mineral Resource and it is uncertain if further exploration will result in the determination of a Mineral Resource.

The information in this presentation that relates to Philips River Mining Ltd ("PRH") is subject to a Asset Sale Agreement ("ASA") as announced to the ASX on 26 March 2012. Refer to PRH JORC mineral resource & reserve summary in appendix regarding competent persons.

The information on exploration targets in this presentation are based on a conceptual range of targets as follows:

<i>Tonnage range:</i>	<i>50 million to 100 million tonnes</i>
<i>Grade range:</i>	<i>3 g/t Au to 8 g/t Au</i>
<i>Ounces:</i>	<i>5 million to 10 million</i>



Investment Highlights - 3 Large Gold Projects



- **Mount Monger - 1.7 Moz Au high grade resource¹ (7.8 g/t Au):**

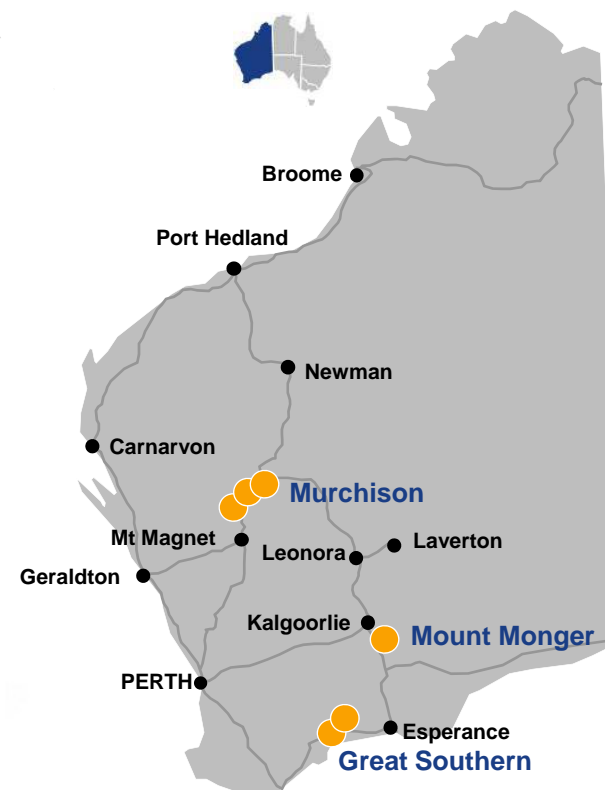
- 4 underground **producing** mines & 1 open pit
- expanding processing facility to 1Mtpa by H2 2012
- targeting sustained production of ~ 200,000 oz pa by 2014
- expected mine life of >10 years

- **Murchison - 1.9 Moz Au resource¹ (2.8 g/t Au):**

- **under construction** - production Q3 FY13
- 14 open pit & 4 underground feed sources
- ~100,000 oz per annum, 8 to 10 year mine life
- **<2 year payback** period at **A\$1,400** oz Au price
- **high grade copper discovery** at Hollandaire

- **Great Southern² – 1.0 Moz Au resource³:**

- **advanced exploration** project (2,700sqkm)
- Kundip³ resource 0.8 Moz (2.7 g/t Au)
- potential third production centre
- Munglup exploration project (100% SLR)



1: Refer to appendix - JORC Resource Inventory

2: Subject to ASA with PRH

3: As reported by PRH
Excludes Trilogy



Company Performance Since Inception

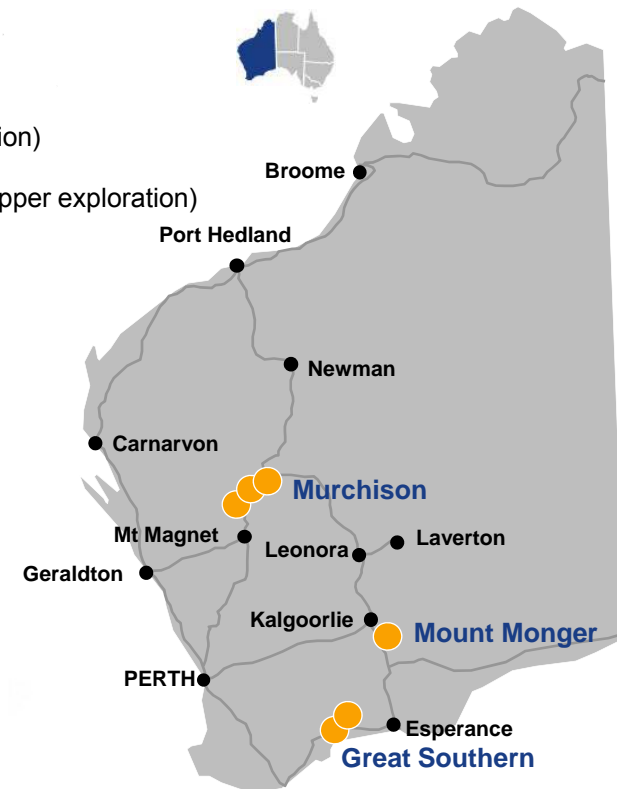


■ Equity Raising:

- November 2007 \$30 million at \$0.30 ps (IPO)
- October 2009 \$18 million at \$0.79 ps (accelerate gold exploration)
- November 2011 \$70 million at \$3.40 ps (develop Murchison & copper exploration)

■ Results:

- \$97.7 million cash & bullion (31 December 2011)
- no debt, no hedging
- profitable every year since inception
- delivered low capital business outcomes
- purchased 4 mining areas & 2 mills
- produced over 220,000 ounces of gold from Mount Monger
- added over 2.5 million ounces to global resource base
- extended mine life from 2 to >10 years
- high grade copper discovery at Hollandaire
- acquiring Great Southern Gold Project¹ from Phillips River Mining



1: Subject to ASA with PRH



Company Overview



ASX Code: SLR

ASX 200 Index	December 2011
Ordinary Shares	220.3 million
Unlisted Options	3.4 million
Market Cap: A\$3.20 per share	A\$715 million
Range (12 month)	A\$1.57 - A\$3.87
Average Daily Volume	1.3M shares (\$4.7M)

Investor	Shares (M)	%
Directors	25.5	11.4
Sprott Asset Management	18.1	8.1
Goodman & Company	16.6	7.5
Macquarie Investment	11.2	5.1
Regal Funds Management	10.2	4.6
Paradice Investments	8.8	3.9
Top 10 + Directors	112.5	50.3

Directors

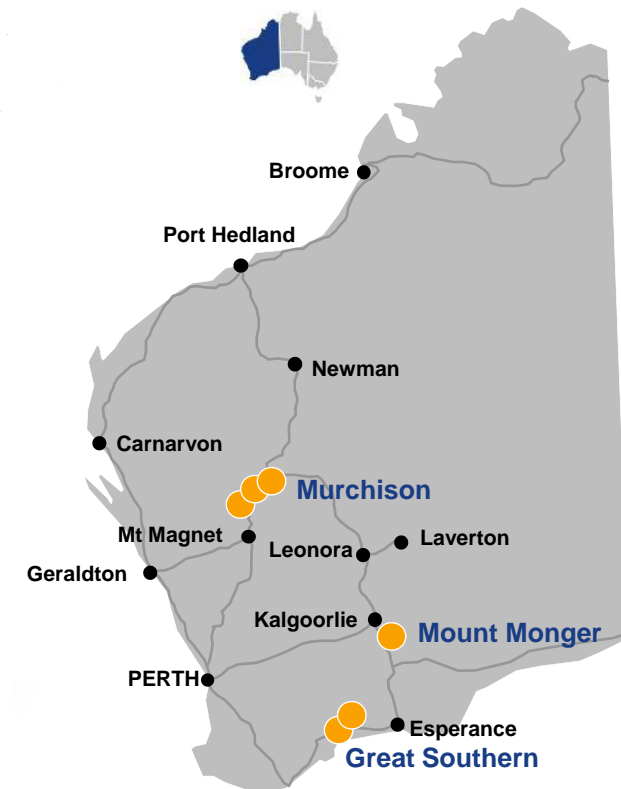
Paul Chapman	Chairman
Les Davis	Managing Director
Chris Banasik	Director Exploration and Geology
David Griffiths	Non Executive Director
Peter Johnston	Non Executive Director
Brian Kennedy	Non Executive Director



Exploration Plan



- **Mount Monger, Murchison & Great Southern:**
 - multiple drill rigs
 - infill, extensional & green fields
- **Objectives:**
 - **10Moz¹** Au target over time
- **Significant gold resource upside:**
 - highly prospective, underexplored tenement holding
 - results to date support this view
 - continue with \$18 million per annum programme
- **Advance base metal exploration at Eelya Complex:**
 - \$20 million exploration programme

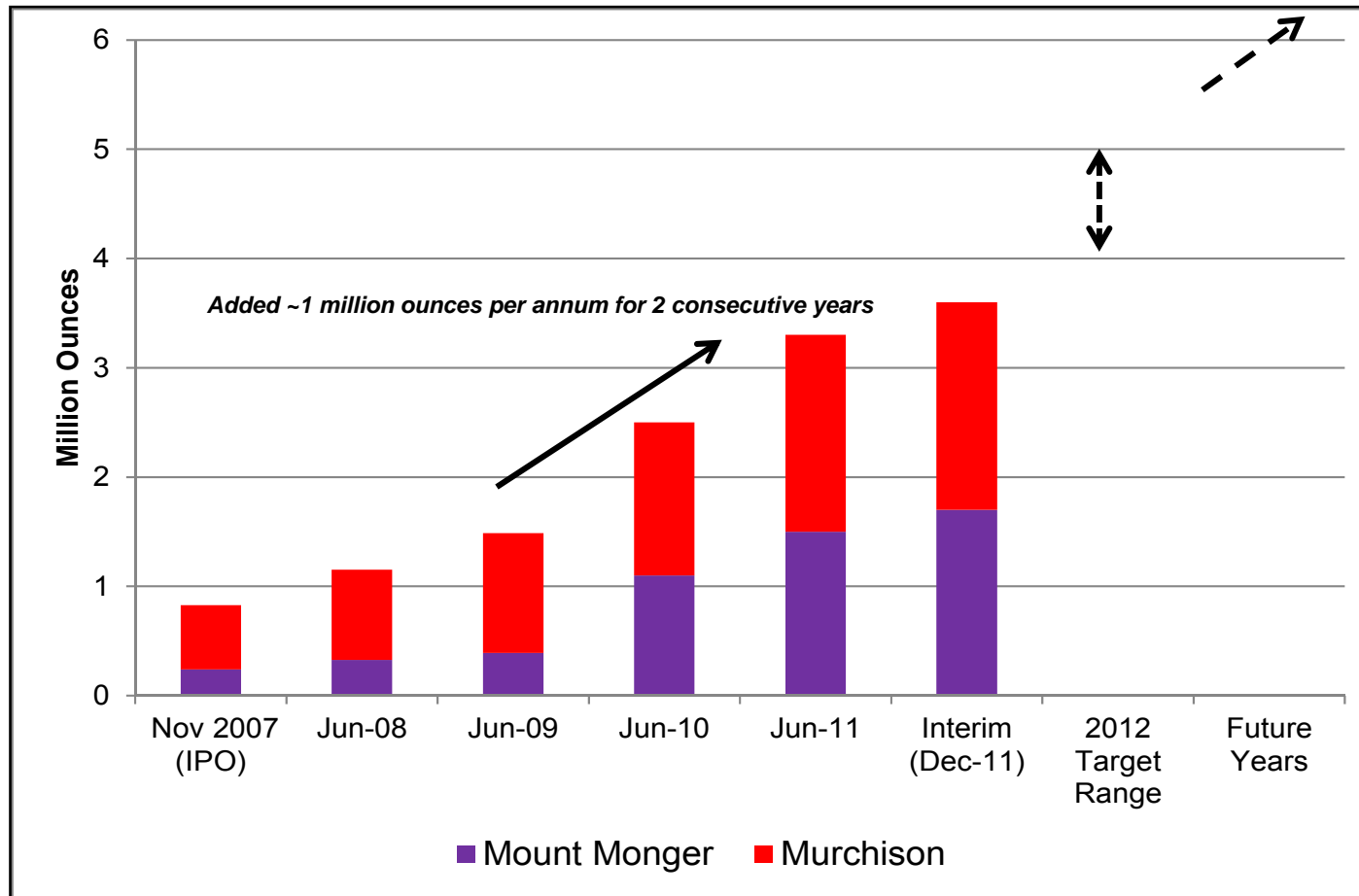


1: Refer to slide 2 - Exploration Targets

Slide 6



Resource Growth

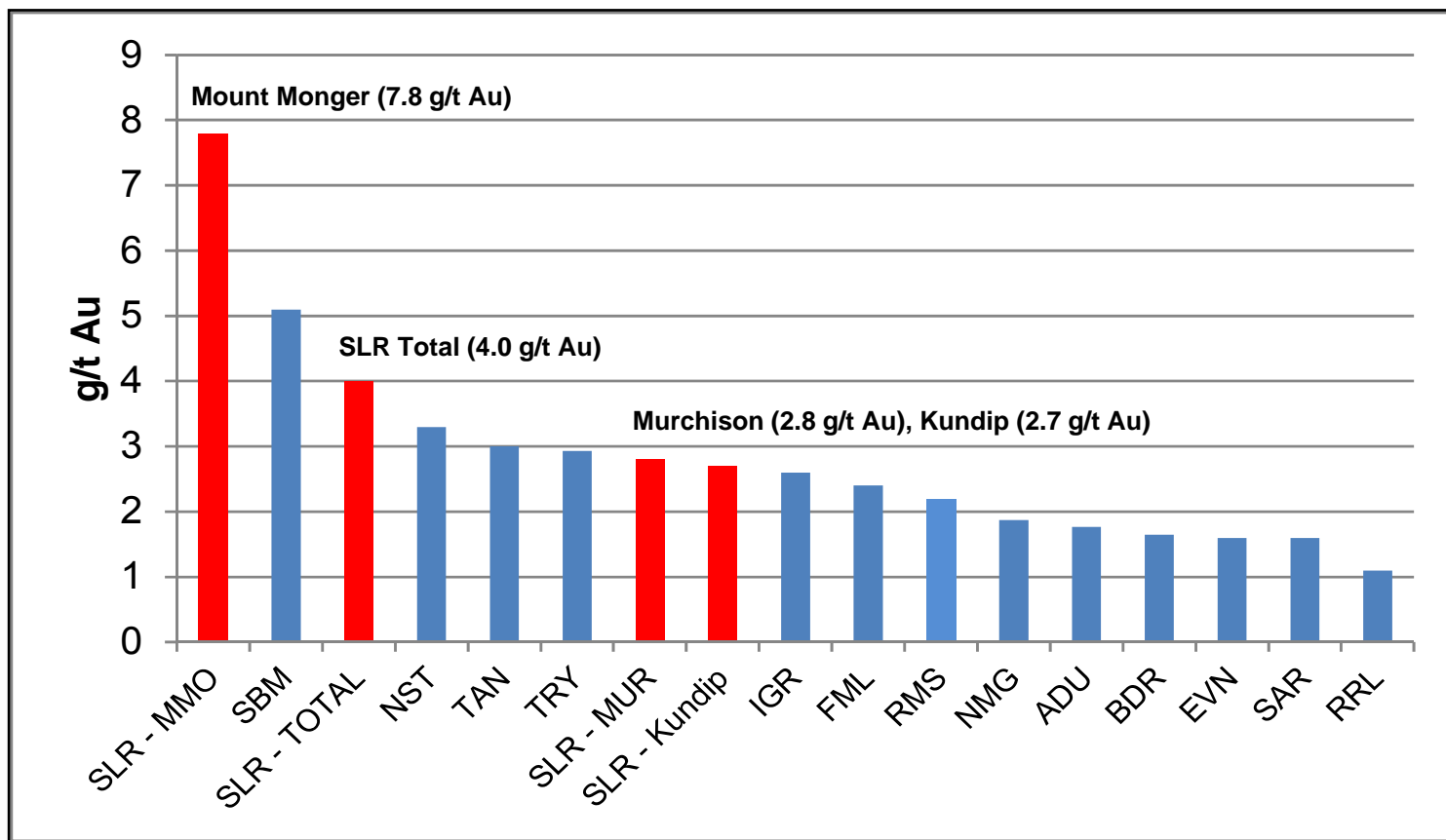


- 1: Refer to appendix - JORC Resource Inventory
- 2: Refer to slide 2 - Exploration Targets
- 3: 2007 to 2011 depletion: 251koz
- 4: Rothsay sold in Aug 11: 133koz

Slide 7



Resource Grade



Murchison Underground = 4.3 g/t Au
Murchison Open Pit = 2.2 g/t Au

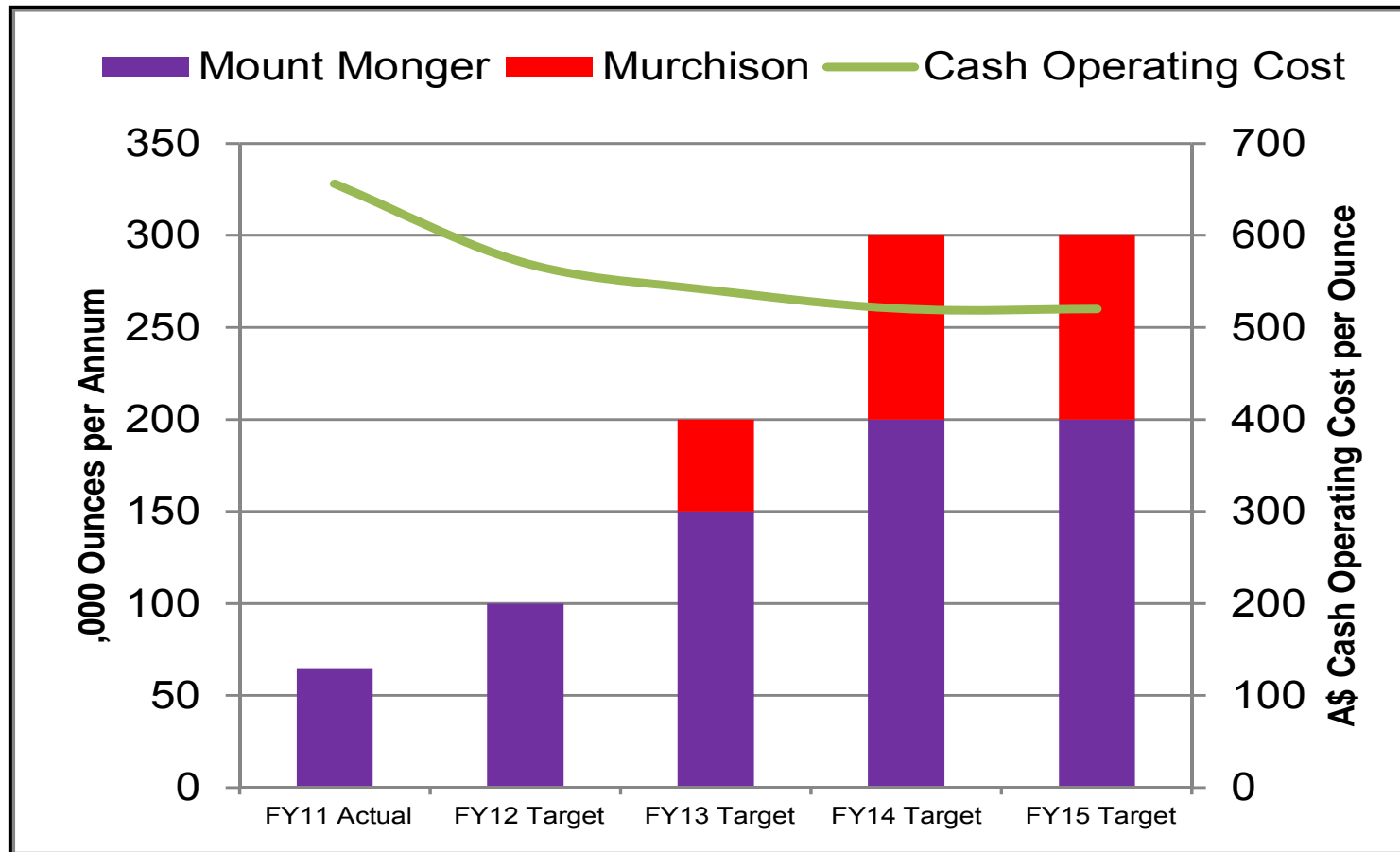
Kundip Underground = 4.5 g/t Au
Kundip Open Pit = 3.0 g/t Au

1. Analysis over ASX Junior to Mid - Caps
2. Includes producers & developers
3. Data sourced from IRESS and company filings
4. Refer to appendix - JORC Resource Inventory
5. Kundip is subject to ASA with PRH

Slide 8



Production Targets - Gold Sales



1. Pending exploration success
2. CONCEPTUAL TARGETS ONLY - Refer to disclaimer on slide 2
3. Australian financial years, 1 July to 30 June
4. Ounces Sold
5. Cash operating cost is for Mount Monger only & excludes royalties

Slide 9



Key Requirements To Achieve Targets



1. Ongoing gold exploration:

- \$18 million per annum programme
- **committed to long term exploration**



2. Debottleneck Mount Monger underground mines:

- construction of \$5 million ventilation shaft
- **completed on time & on budget**



3. Debottleneck Lakewood Gold Processing Facility (LGPF):

- **stage 1 upgrade to 700ktpa completed on time & on budget**
- **stage 2 to 1Mtpa in progress**



4. Murchison production:

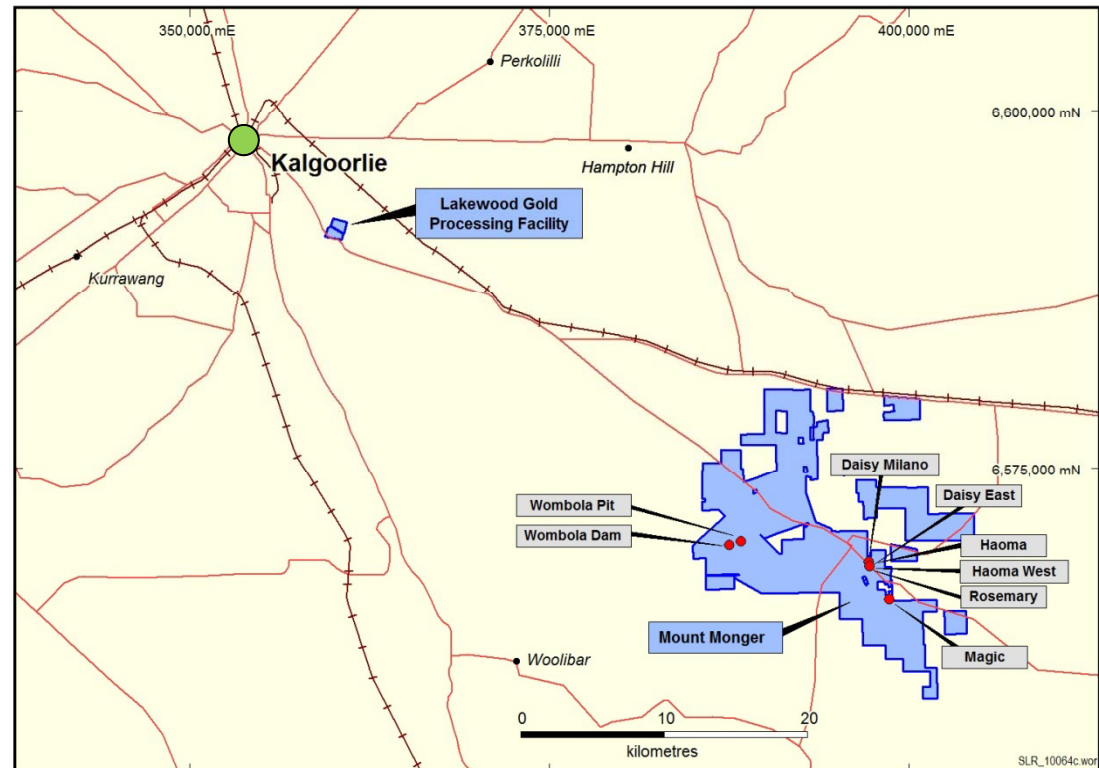
- under construction - first gold bar Q3 FY13
- **in progress and on track**



Mount Monger Location



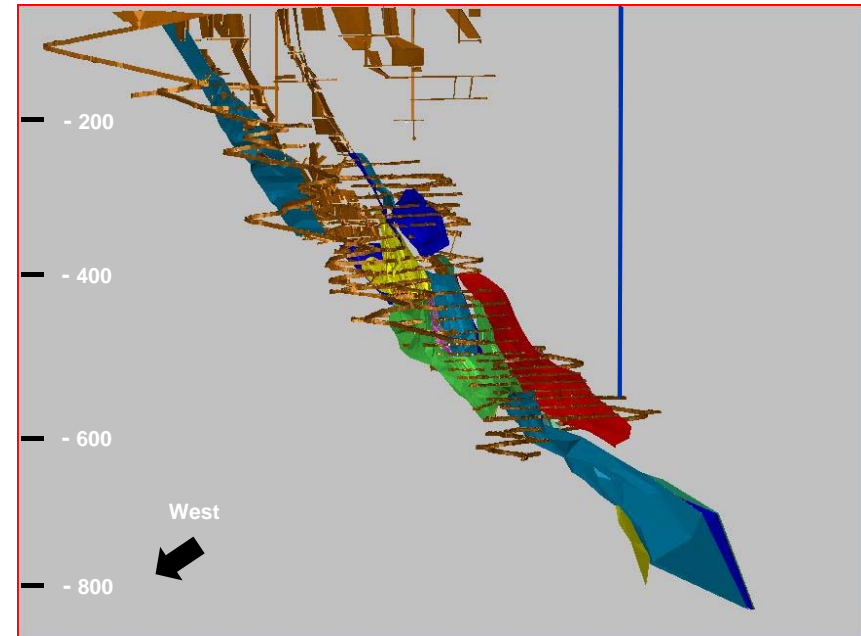
- **50 km south east of Kalgoorlie:**
 - a world class gold region
 - produced >60Moz
 - excellent access to suppliers
 - residential workforce
- **Access:**
 - via Mount Monger Road
- **Land holding:**
 - ~160 sqkm



Ore Sources To Achieve 200,000 oz pa?



- **Daisy Milano:**
 - produced > 330,000 oz of gold¹
 - current resource of 610,000 oz
 - endowed with >1,000 oz per vertical metre
 - mineralisation remains open below 900 metres
 - potential to produce over 1Moz
 - becoming significant on a regional scale
 - near mine exploration targeting “the next one”
- **“Three Daisy Milano Strategy”:**
 - three independent underground mines
 - accessed from same infrastructure
 - development in place by 2014
 - producing ~60,000 pa each
- **+ open pit production = 200,000 oz pa by 2014**

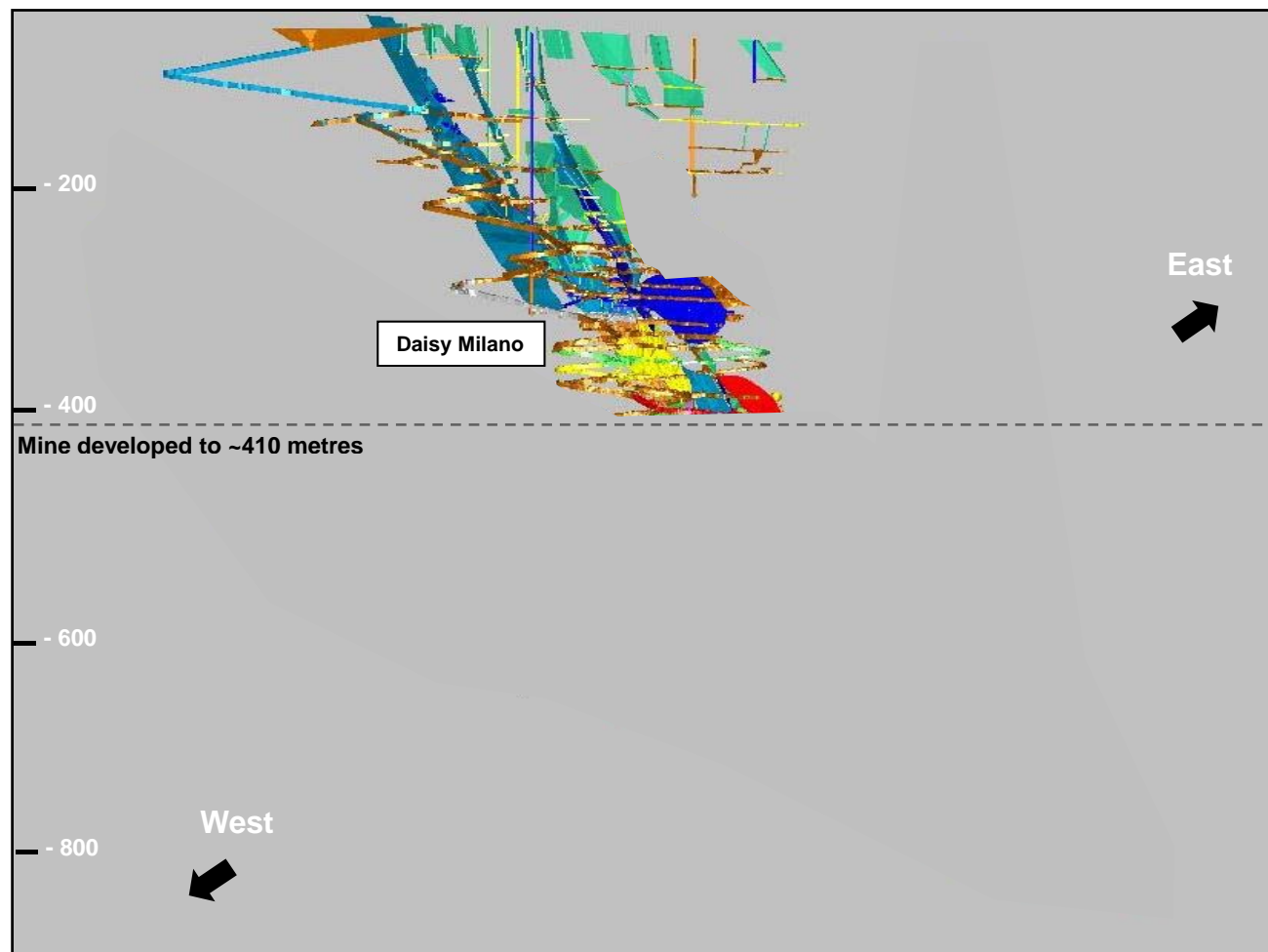


Schematic view of Daisy Milano

1: Since inception



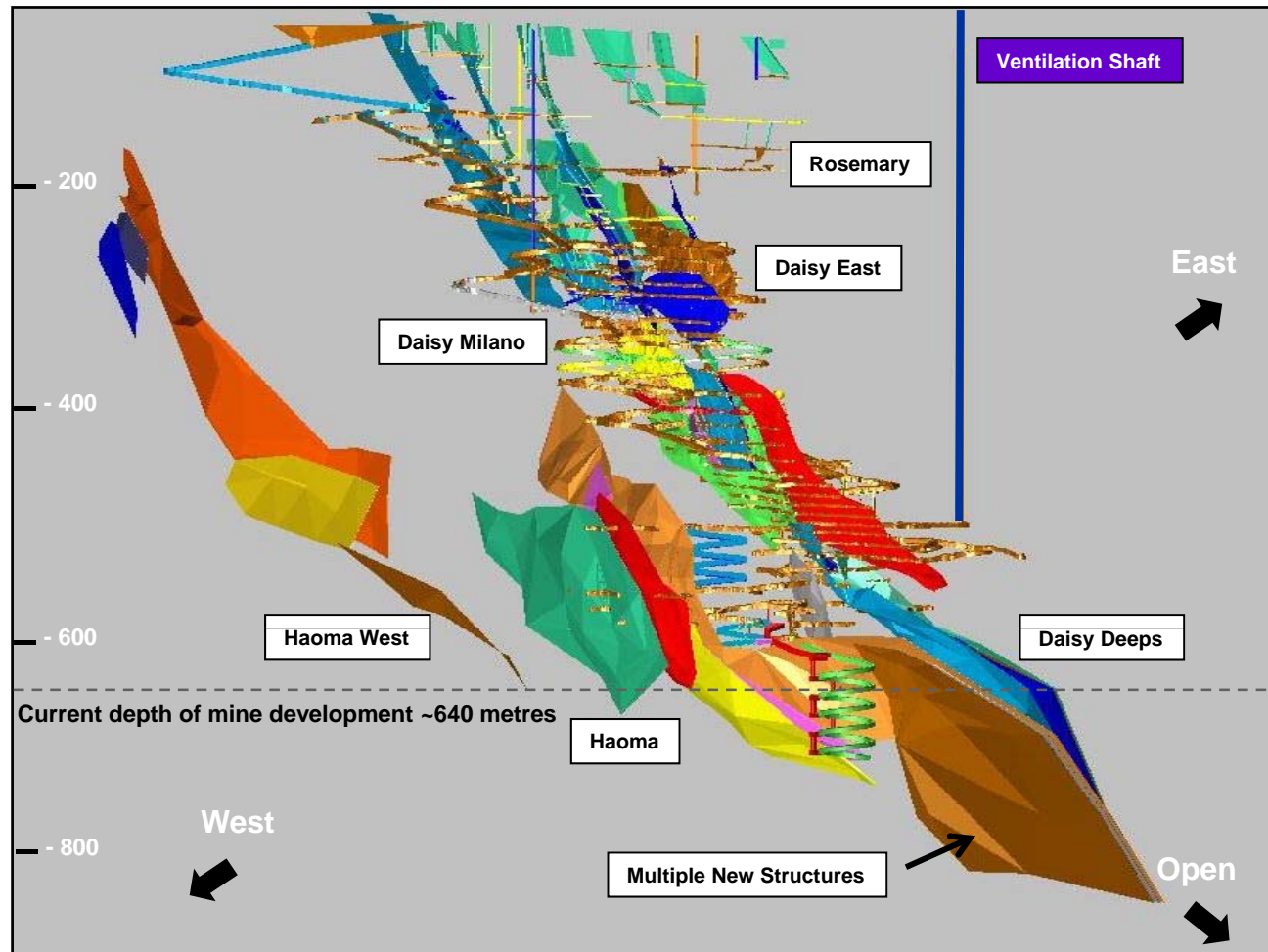
Nov 2007: 1 Mine - 235,000 oz of Resource



Slide 13



4 Underground Mines - 1.3Moz of Resource

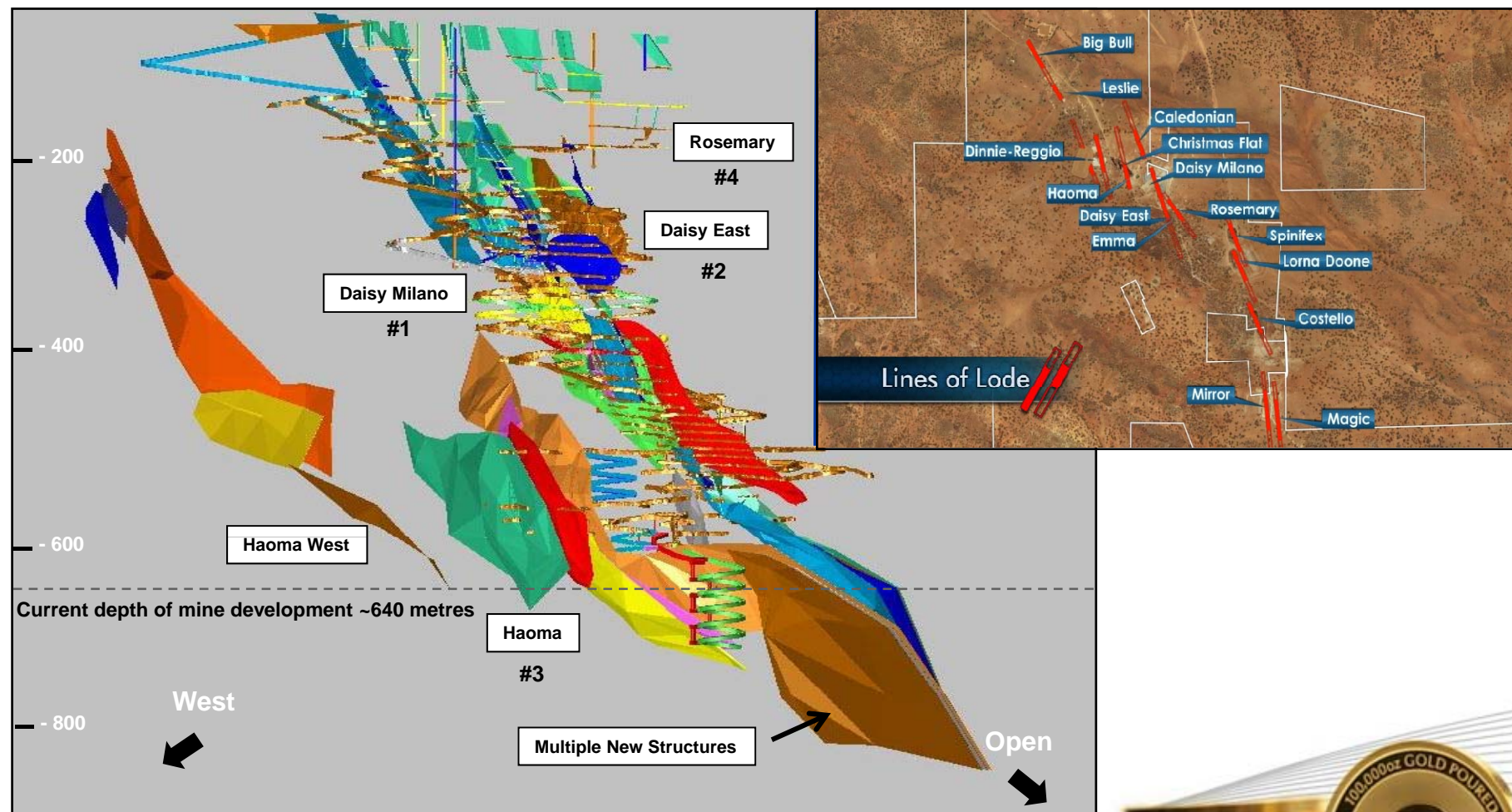


1. Daisy Milano
2. Daisy East
3. Haoma
4. Rosemary

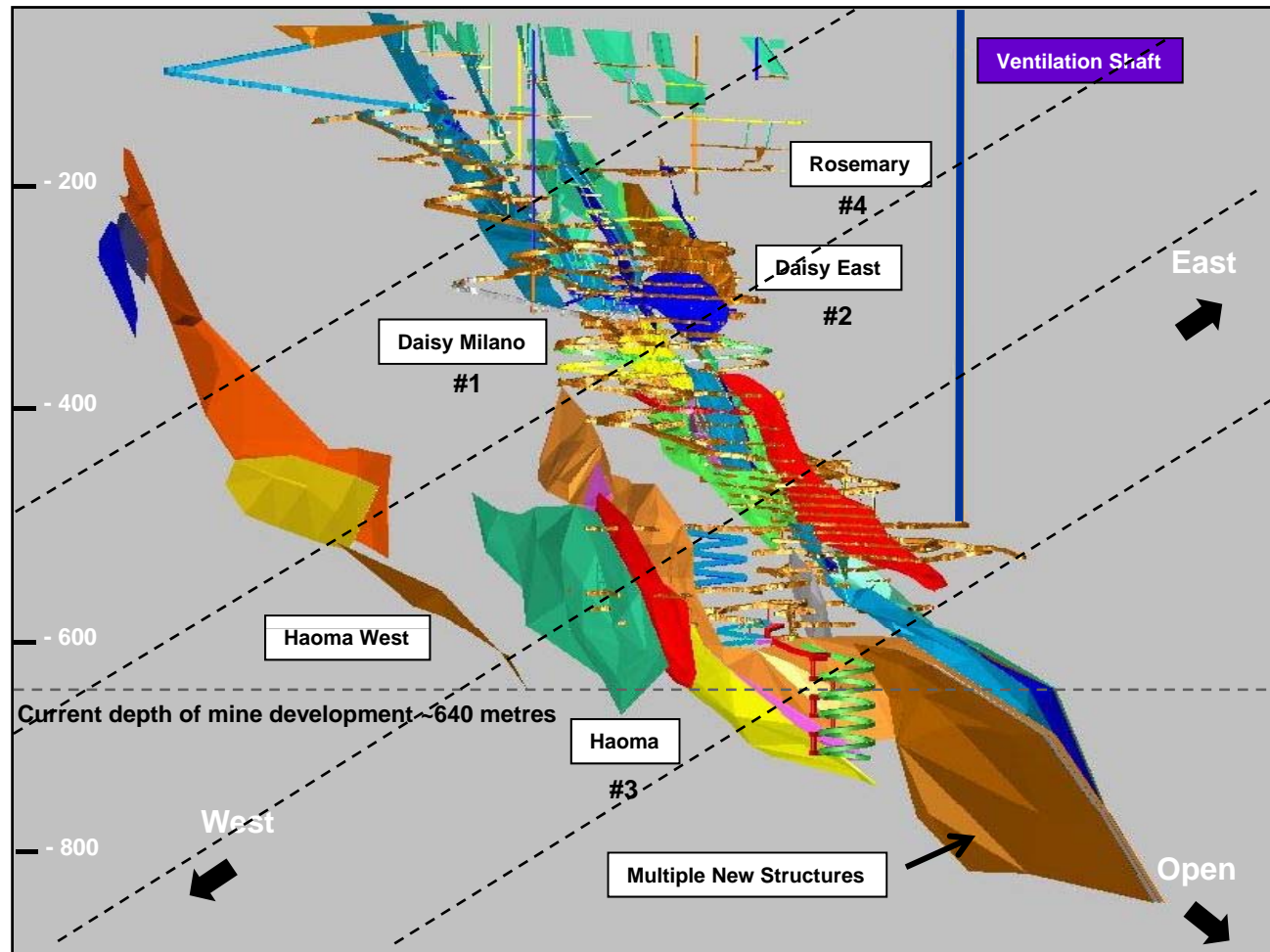
All accessible from same infrastructure containing 1.3Moz of resource



How Many Future Underground Mines?



Drill 600 Metre Long Holes - East & West



- 2012 exploration focus
- 600 metre flat drill holes
- drilled east & west from current infrastructure
- early indications are encouraging at Haoma West

Pictorial representation of the underground diamond drilling programme (represented by dotted lines)



Wombola Area - Open Pit Projects



- **Location:**
 - 5km north west of Daisy Milano
- **Resource:**
 - 1.4 million tonnes at 3.1 g/t Au
 - 137,200 oz¹
- **Wombola Dam:**
 - starter pit in progress
 - grade control drilling big pit
- **Wombola Pit:**
 - production March 2012 quarter
- **Near mine exploration:**
 - West, east, & north of Wombola Dam
- **Strategy:**
 - increase open pit minable inventory
 - targeting² 400,000 ore tonnes per annum by 2014



Wombola Dam Starter Pit

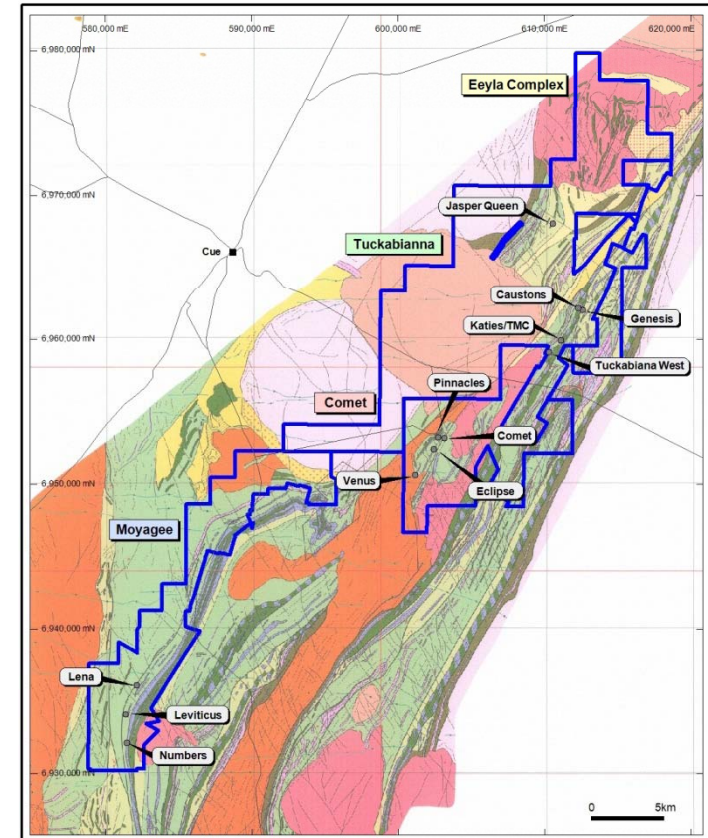
1: Refer to appendix - JORC Resource Inventory
2: Refer to slide 2 - Exploration Targets



Murchison - Overview



- **Located 600 km north of Perth**
- **Large project area:**
 - Tuckabianna, Comet & Moyagee
- **Historic production:**
 - 500,000 oz (A\$400 oz gold price environment)
- **Large high grade resource:**
 - 20.6 million tonnes at 2.8 g/t gold for 1.9Moz¹
 - 65 km strike, under drilled >100 m
- **Surrounded by multi million ounce gold deposits:**
 - Big Bell (4Moz), Great Fingall (2Moz), Hill 50 (2Moz)
 - largest regional deposits were all underground mines
- **Target base case production plan:**
 - 1.2mtpa at ~3.0 g/t Au
 - 14 open pit & 4 underground ore sources
 - ~100,000 oz per annum, 8 to 10 year mine life
- **Eeyla Complex:**
 - high grade copper discovery at Hollandaire
 - further base metal potential²



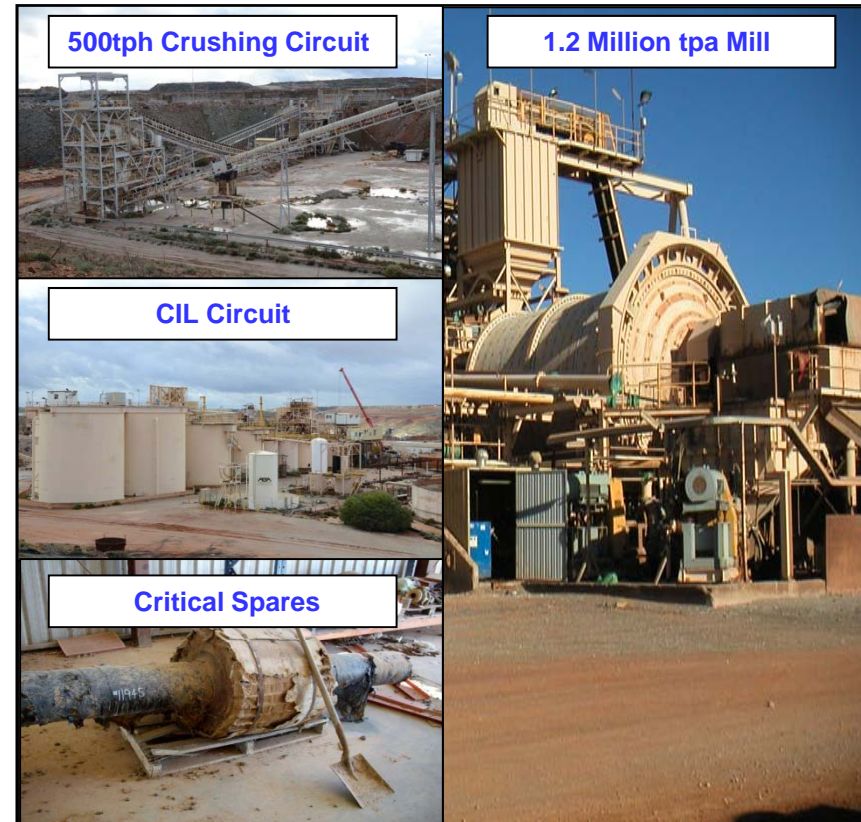
1: Refer to appendix - JORC Resource Inventory
2: Refer to slide 2 - Exploration Targets



Murchison - Production Q3 FY13



- **JORC Resource:**
 - open pit: 14.5Mt at 2.2 g/t Au for 1.0Moz¹
 - underground: 6.2Mt at 4.3 g/t Au for 840,000 oz¹
- **Capital expenditure:**
 - processing facility \$35 million
 - mine surface infrastructure \$5 million
 - pre-production mine development \$25 million
 - payback period <2 years at A\$1,400 Au price
- **Infrastructure:**
 - 250 man camp located in Cue - Sep 2012 Qtr
 - processing facility relocation, refurbishment, reconstruction & commissioning - Jan to Dec 2012
- **Mining - Open Pit & Underground:**
 - open pit mining - September 2012 Qtr
 - underground development - Dec 2012 Qtr
- **Near mine exploration:**
 - ongoing infill & extensional drilling at underground deposits



Company owned milling infrastructure to be relocated to Murchison

1: Refer to appendix - JORC Resource Inventory



Murchison Camp Construction



Slide 20



Murchison Mill - Deconstruction & Relocation



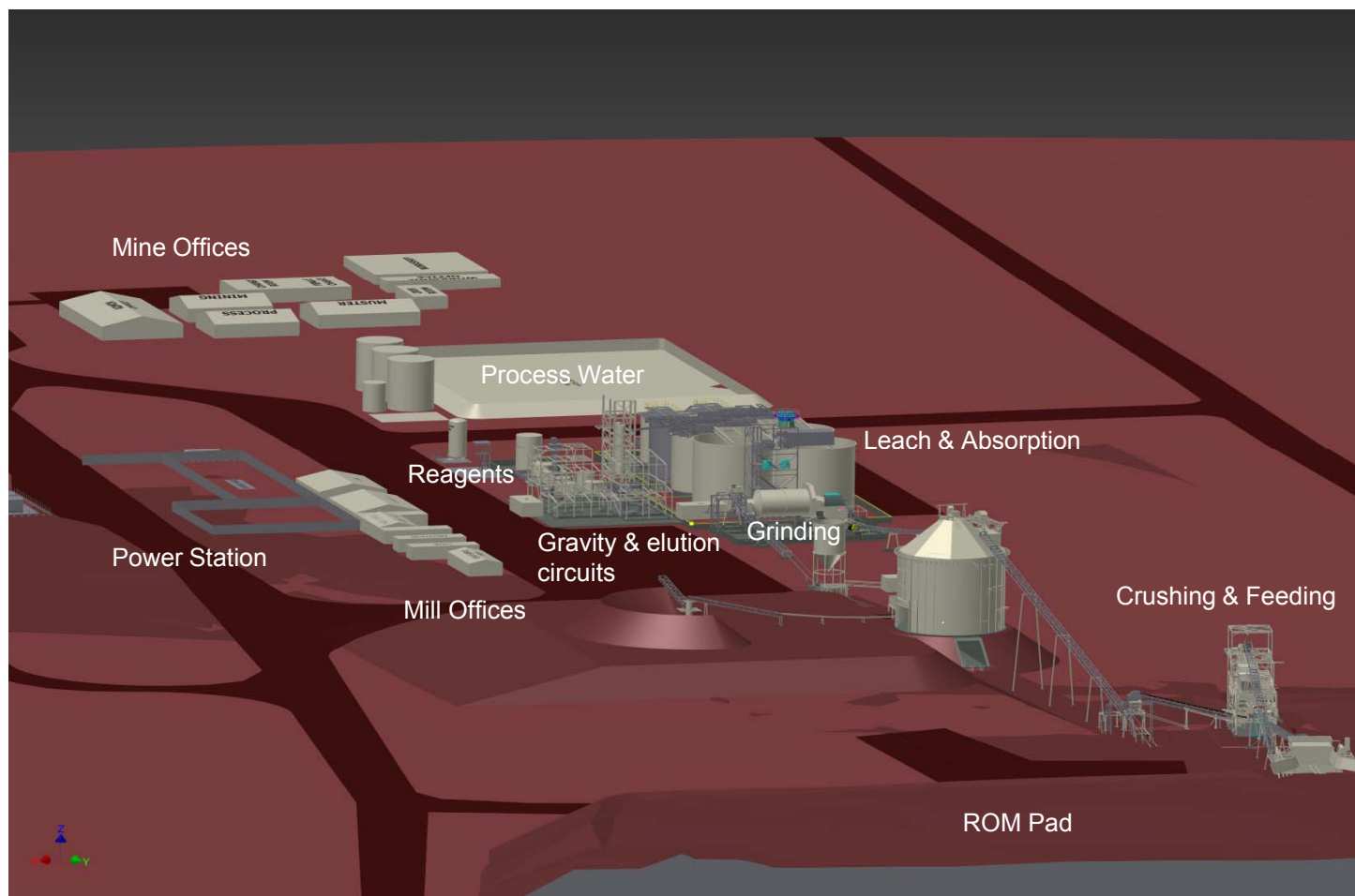
Deconstruction of company owned milling infrastructure located 330km from Murchison



First truck load of milling infrastructure arriving at Murchison mill site



Murchison - Mill Layout



Slide 22



Deeper Drilling Confirming Resource Potential



■ Tuckabianna West:

- 2.0m at 16.2 g/t Au from 94m
- 3.0m at 18.3 g/t Au from 143m
- 3.9m at 15.4 g/t Au from 170m
- 9.0m at 5.7 g/t Au from 370m

■ Caustons:

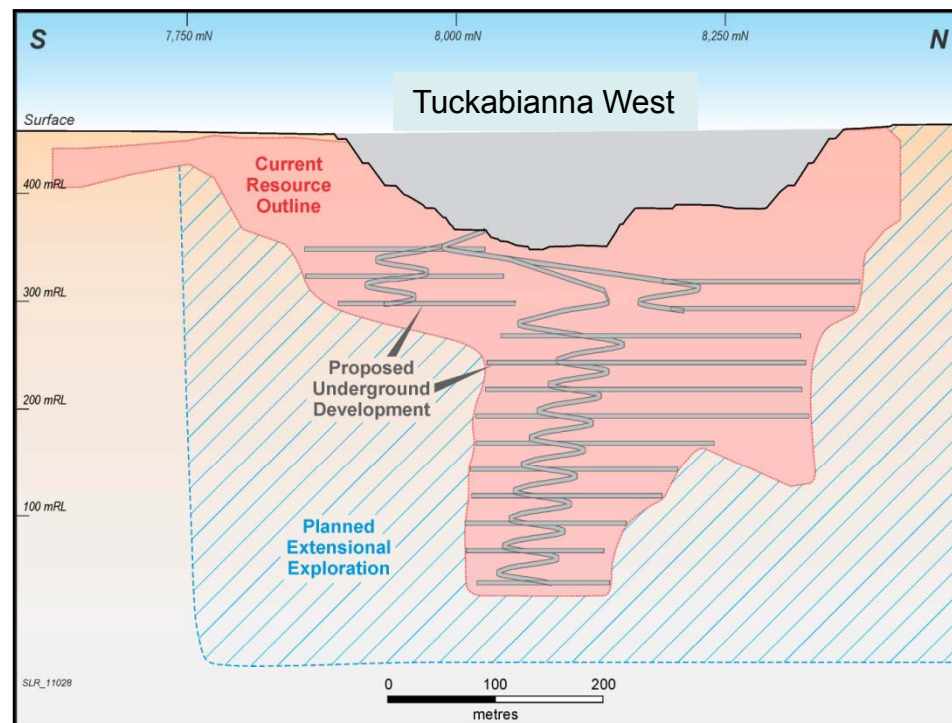
- 7.1m at 25.6 g/t Au from 209m
- 4.6m at 10.9 g/t Au from 210m
- 2.0m at 19.7 g/t Au from 115m

■ Comet:

- 3.8m at 5.4 g/t Au from 200m
- 3.0m at 3.6 g/t Au from 245m
- 2.5m at 3.6 g/t Au from 243m

■ Lena:

- 2.0m at 81.0 g/t Au from 81m
- 5.0m at 57.0 g/t Au from 102m
- 6.0m at 31.0 g/t Au from 355m



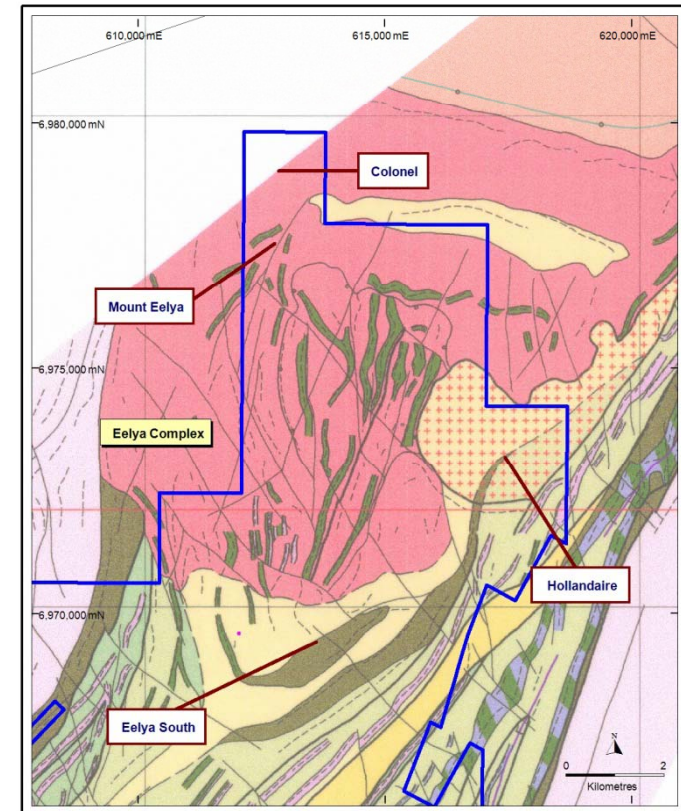
Schematic long section showing mine layout & extensional drilling programme



Eelya Complex - Overview



- **Location:**
 - 4 km north of Tuckabianna
- **Regional geology:**
 - felsic volcanic rocks
 - potential for VMS mineralisation
- **Previous exploration:**
 - limited base metal exploration in the 1970's
 - no meaningful exploration since 1981
- **Current exploration:**
 - 9 large electromagnetic conductors over 50 sqkm area
 - high grade copper discovery at Hollandaire
 - project area is north of planned gold mill
- **Current status:**
 - \$20 million exploration programme commenced within Eelya Complex



Hollandaire - High Grade Copper Discovery



- **Hollandaire deposit:**

- copper grades up to 45%
- gold grades up to 5.5 g/t
- silver grades up to 256 g/t

- **Mineralisation open in all directions**

- **Initial results include:**

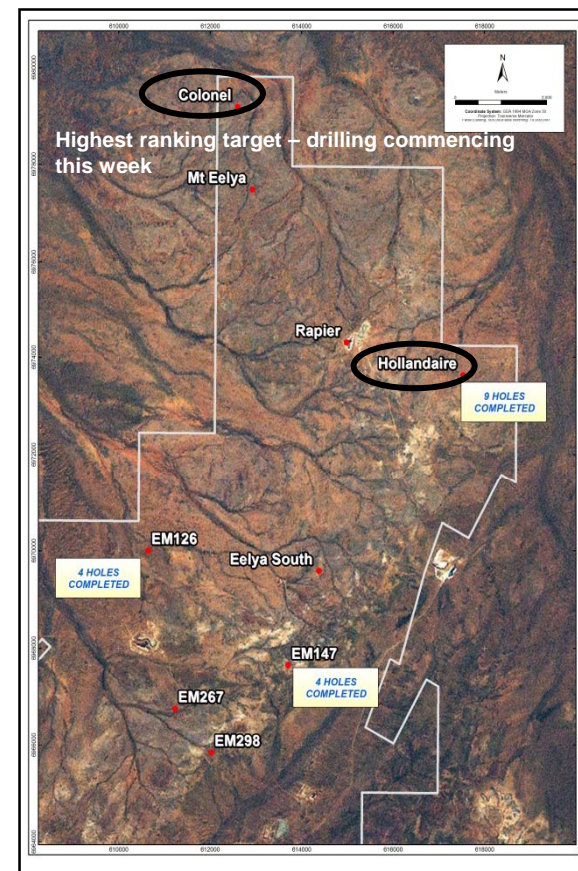
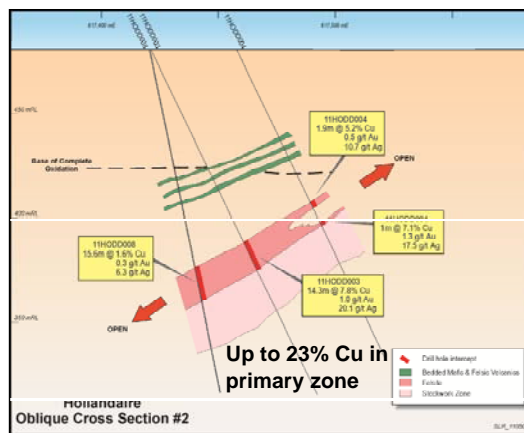
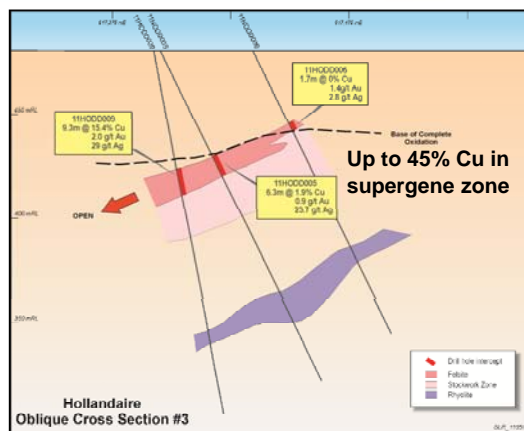
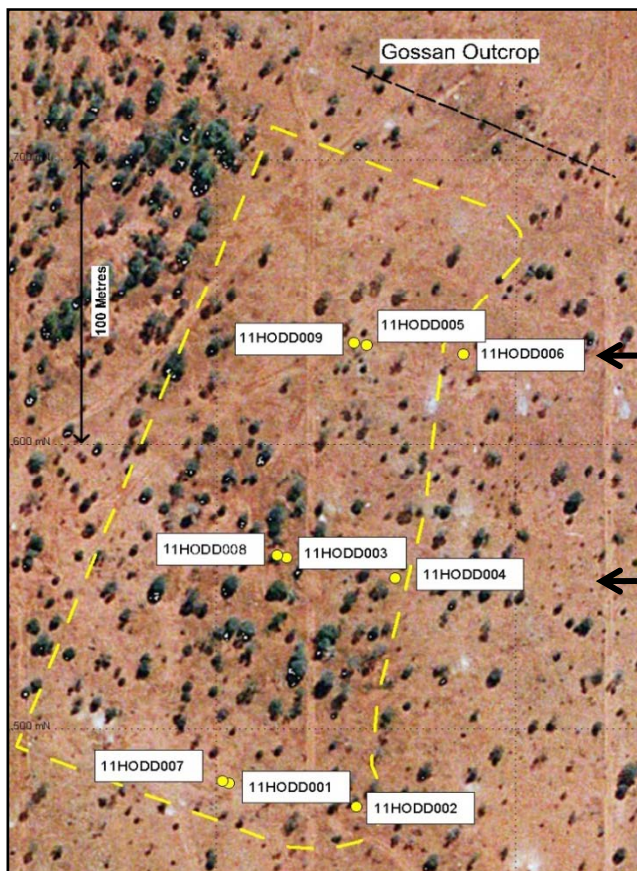
- 9.3m at 15.4% Cu, 2.0 g/t Au & 29.0 g/t Ag from 61m
(including 1.0m at 45.5% Cu, 2.8 g/t Au & 51.0 g/t Ag)
- 14.3m at 7.8% Cu, 1.0 g/t Au & 20.1 g/t Ag from 109m
(including 1.7m at 23.0% Cu, 1.8 g/t Au & 77.3 g/t Ag)
- 1.9m at 5.2% Cu, 0.5 g/t Au & 10.7 g/t Ag from 97m
- 15.7m at 1.1% Cu, 0.3 g/t Au & 4.4 g/t Ag from 161m



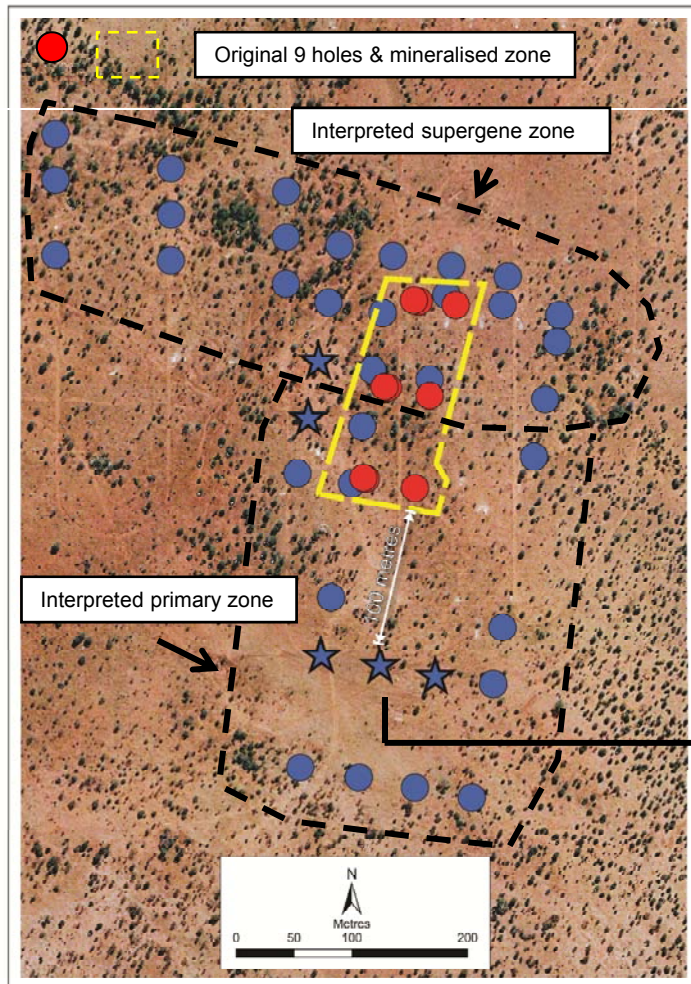
Drill core showing supergene chalcocite with copper grades up to 45%



Hollandaire - High Grade Copper Discovery



Hollandaire - Current Status



12HOD012 drill core showing heavy matrix sulphide

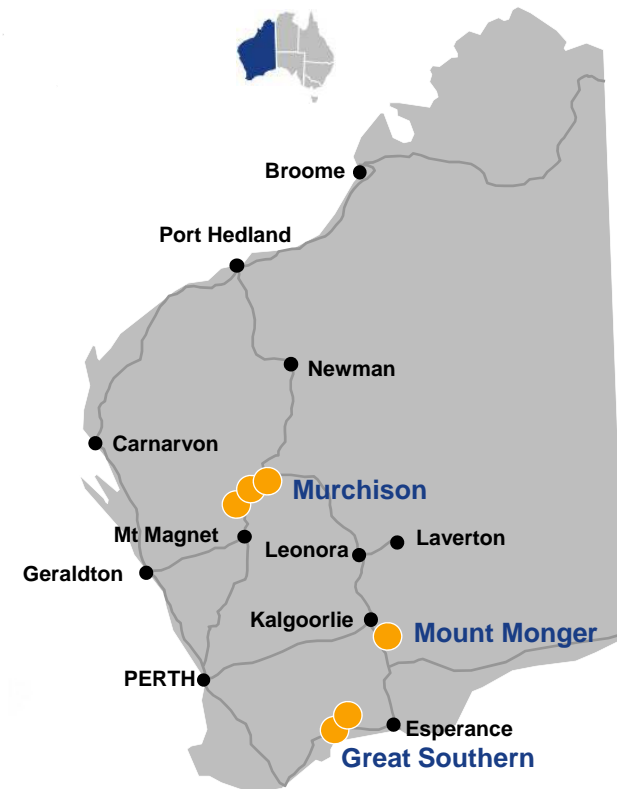
- 1 RC rig drilling supergene zone
 - 6 RC holes completed to date all intersected mineralisation at target
-
- ★ 5 diamond holes completed in primary zone
 - all 5 diamond holes completed to date intersected mineralisation at target
 - primary zone footprint extended 100 south and down to 200 metres depth
 - 2 diamond rigs drilling primary zone
-
- Assay results expected 4 – 6 weeks



Great Southern¹ - Overview



- **Located 450 km south east of Perth**
- **Large project area:**
 - 2,500 sqkm of tenements
 - Kundip & Munglinup projects
- **Historic gold production:**
 - 68,000 ounces at 18 g/t Au
- **Kundip Gold Projects:**
 - JORC resource²: 8.9 million tonnes at 2.7 g/t Au for 0.8Moz¹
 - JORC reserve²: 2.8 million tonnes at 3.4 g/t Au for 307koz
 - significant regional potential for high grade gold deposits
- **Trilogy:**
 - polymetallic deposit (Cu, Au, Ag, Zn, Pb)
 - low priority project
- **Strategy:**
 - ramp up exploration in 2013
 - gold focused infill & extensional drilling at Kundip
 - resource to reserve conversion
 - assess low capital milling options
 - potential for third production centre



1: Subject to ASA with PRH

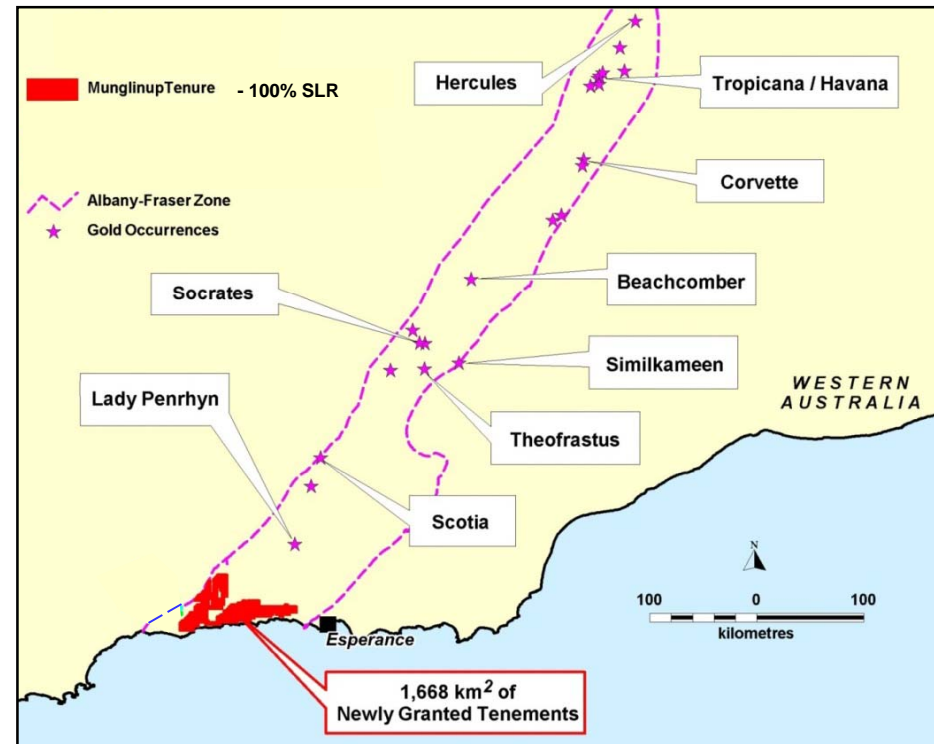
2: Refer to appendix - JORC resource & reserve summary
Excludes Trilogy



Munglinup - Albany Fraser Belt



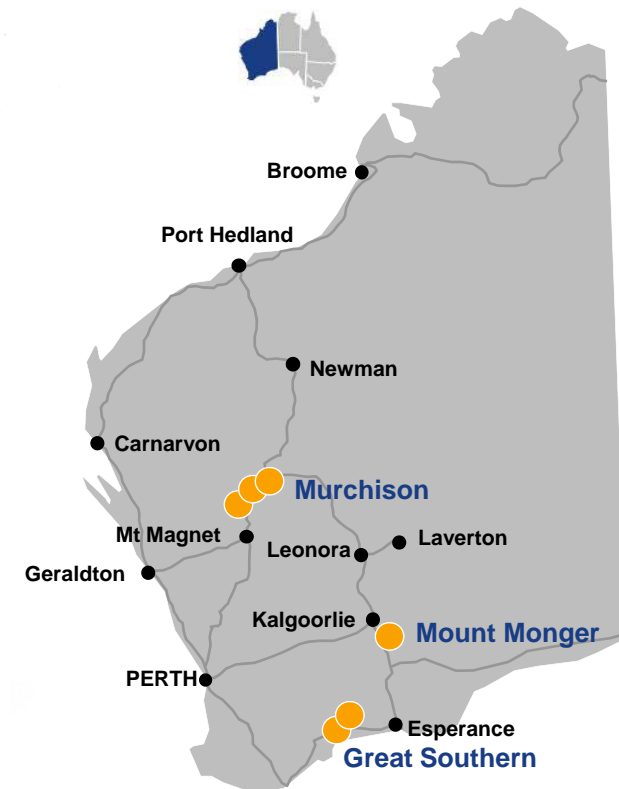
- **Land position:**
 - 1,670 sqkm tenements
- **Regional geology:**
 - volcanics
 - potential for Tropicana style mineralisation
- **Previous exploration:**
 - limited historic exploration
 - shallow cover
- **Planned exploration:**
 - geochemical & geophysical programmes
 - establish target areas for follow up drilling



Why Silver Lake Resources?



- **Production increasing at Mount Monger:**
 - multiple underground and open pit ore sources
 - expected mine life of ~10 years
 - staged expansion to 1Mtpa in Sep Qtr 2012
- **Murchison production Q3 FY13:**
 - 14 open pit & 4 underground ore sources
 - targeting ~1.2mtpa at 3.0 g/t Au
 - expected mine life 8 to 10 years
 - high grade copper discovery at Hollandaire
- **Significant exploration upside:**
 - 3.6 Moz Au resource base¹ (Mount Monger & Murchison)
 - further base metal potential at Eelya Complex²
 - 1.0 Moz Great Southern Gold Project³
- **Strong cashflow & profitable:**
 - no debt and no hedging
 - fully funded gold growth strategy
- **Growth:**
 - targeting production of ~ 300,000 oz pa by 2014



1: Refer to appendix - JORC Resource Inventory
2: Refer to slide 2 - Exploration Targets
3: Subject to ASA with PRH





Presentation Appendix

ASX: SLR
ABN: 38 108 779 782

www.silverlakeresources.com.au

Mount Monger JORC Resource



	Measured Resources			Indicated Resources			Inferred Resources			Total Resources		
Deposit	Ore t '000s	Grade g/t Au	Total Oz Au '000s	Ore t '000s	Grade g/t Au	Total Oz Au '000s	Ore t '000s	Grade g/t Au	Total Oz Au '000s	Ore t '000s	Grade g/t Au	Total Oz Au '000s
Daisy Milano	172.3	30.6	169.5	562.2	17.2	310.9	326.0	12.3	128.9	1,060.5	17.9	609.3
Daisy East	23.9	41.4	31.9	21.4	15.5	10.7	25.9	15.9	13.2	71.2	24.4	55.8
Christmas Flat	-	-	-	338.6	4.1	44.1	448.5	6.3	91.3	787.1	5.3	135.4
Haoma	945.0	8.1	247.0	365.0	14.8	174.0	90.0	15.6	45.0	1,400.0	10.3	465.0
Costello	-	-	-	-	-	-	111.0	4.0	14.3	111.0	4.0	14.3
Lorna Doone	-	-	-	-	-	-	128.0	3.1	12.8	128.0	3.1	12.8
Magic	-	-	-	749.2	4.1	98.3	1,071.0	5.2	178.0	1,820.2	4.7	276.3
Wombola Pit	-	-	-	161.2	3.0	15.7	299.0	2.8	26.6	460.2	2.9	42.3
Wombola Dam	-	-	-	154.8	4.1	20.4	420.2	3.5	47.1	575.2	3.7	67.5
Hammer & Tap	-	-	-	-	-	-	350.2	2.4	27.4	350.2	2.4	27.4
Total Mount Monger	1,141.2	12.2	448.4	2,352.4	8.9	674.1	3,269.8	5.6	584.6	6,763.4	7.8	1,706.1

As at 31 December 2011

Slide 32



Murchison JORC Resource



	Measured Resources			Indicated Resources			Inferred Resources			Total Resources		
Deposit	Ore t '000s	Grade g/t Au	Total Oz Au '000s	Ore t '000s	Grade g/t Au	Total Oz Au '000s	Ore t '000s	Grade g/t Au	Total Oz Au '000s	Ore t '000s	Grade g/t Au	Total Oz Au '000s
Tuckabianna - OP	-	-	-	4,170.0	2.2	290.0	4,310.0	2.0	280.0	8,480.0	2.1	580.0
Tuckabianna - UG	-	-	-	1,210.0	4.3	170.0	2,170.0	4.1	290.0	3,380.0	4.2	460.0
Comet - OP	36.0	0.6	0.7	2,540.0	2.5	210.0	1,060.0	1.9	70.0	3,636.0	2.4	270.7
Comet - UG	-	-	-	800.0	5.3	140.0	260.0	4.2	30.0	1,060.0	5.0	170.0
Moyagee - OP	-	-	-	960.0	2.1	70.0	1,410.0	2.2	100.0	2,370.0	2.2	170.0
Moyagee - UG	-	-	-	80.0	3.3	10.0	1,630.0	4.0	210.0	1,710.0	4.0	220.0
Murchison - OP	36.0	0.6	0.7	7,670.0	2.3	570.0	6,780.0	2.1	450.0	14,450.0	2.2	1,020.0
Murchison - UG	-	-	-	2,080.0	4.6	310.0	4,060.0	4.1	530.0	6,150.0	4.3	840.0
Total Murchison	36.0	0.6	0.7	9,750.0	2.8	880.0	10,840.0	2.8	980.0	20,636.0	2.8	1,860.7

Murchison open pit resources include mineralisation down to 100 metres depth below the surface.

Murchison underground resources include mineralisation below 100 metres depth from the surface.

As at 31 December 2011

Slide 33



SLR Total JORC Resource



	Measured Resources			Indicated Resources			Inferred Resources			Total Resources		
Deposit	Ore t '000s	Grade g/t Au	Total Oz Au '000s	Ore t '000s	Grade g/t Au	Total Oz Au '000s	Ore t '000s	Grade g/t Au	Total Oz Au '000s	Ore t '000s	Grade g/t Au	Total Oz Au '000s
Total Mount Monger	1,141.2	12.2	448.4	2,352.4	8.9	674.1	3,269.8	5.6	584.6	6,763.4	7.8	1,706.1
Total Murchison	36.0	0.6	0.7	9,750.0	2.8	880.0	10,840.0	2.8	980.0	20,636.0	2.8	1,860.7
Total Silver Lake	1,177.2	11.8	449.1	12,102.4	4.0	1,554.1	14,119.8	3.2	1,464.6	27,399.4	4.0	3,566.8

As at 31 December 2011

Slide 34



PRH JORC Resource



	Measured Resources				Indicated Resources				Inferred Resources				Total Resources			
	Ore				Ore				Ore				Ore			
	tonnes	Grade	Increment	Total	tonnes	Grade	Increment	Total	tonnes	Grade	Increment	Total	tonnes	Grade	Increment	Total
	'000s			'000s	'000s			'000s	'000s			'000s	'000s			'000s
Kundip Project																
Gold	-	-	g/t Au	-	4,390	3.4	g/t Au	481	4,550	2.1	g/t Au	307	8,940	2.7	g/t Au	788
Silver	-	-	g/t Ag	-	4,390	2.5	g/t Ag	354	4,550	2.1	g/t Ag	314	8,940	2.3	g/t Ag	668
Copper	-	-	% Cu	-	4,390	0.4	% Cu	16	4,550	0.3	% Cu	15	8,940	0.3	% Cu	30
Trilogy Project																
Gold	310	2.4	g/t Au	24	5,750	0.7	g/t Au	136	180	0.6	g/t Au	4	6,240	0.8	g/t Au	164
Silver	310	41.2	g/t Ag	407	5,750	48.0	g/t Ag	8,860	180	12.0	g/t Ag	73	6,240	47.0	g/t Ag	9,340
Copper	310	0.3	% Cu	0.9	5,750	1.1	% Cu	62	180	0.8	% Cu	1.4	6,240	1.0	% Cu	65
Total Resource																
Gold	310	2.4	g/t Au	24	10,140	1.9	g/t Au	617	4,730	2.0	g/t Au	311	15,180	1.9	g/t Au	952
Silver	310	41.2	g/t Ag	407	10,140	28.3	g/t Ag	9,210	4,730	2.5	g/t Ag	387	15,180	20.5	g/t Ag	10,010
Copper	310	0.3	% Cu	0.9	10,140	0.8	% Cu	78	4,730	0.3	% Cu	16	15,180	0.60	% Cu	95

Competent person's statement

Rounding may give rise to unit discrepancies in this table

The information in this presentation that relates to Phillip River's Exploration Results and Mineral Resources is based on information compiled by Mr Bruce Armstrong, who is a Member of The Australian Institute of Geoscientists. Mr Armstrong is a full time employee of Phillips River Mining Ltd, and has sufficient experience which is relevant to the style of mineralisation and type of deposit under consideration and to the activity which he is undertaking to qualify as a Competent Person as defined in the 2004 Edition of the 'Australasian Code for Reporting of Exploration Results, Mineral Resources and Ore Reserves'. Mr Armstrong consents to the inclusion in this announcement of the matters based on his information in the form and context in which it appears.



PRH JORC Reserve



	Proved Reserves				Probable Reserves				Total Reserves			
	Ore				Ore				Ore			
	tonnes	Grade	Increment	Total	tonnes	Grade	Increment	Total	tonnes	Grade	Increment	Total
	'000s			'000s	'000s			'000s	'000s			'000s
Kundip Project												
Gold	-	-	g/t Au	-	2,810	3.4	g/t Au	307	2,810	3.4	g/t Au	307
Silver	-	-	g/t Ag	-	2,810	2.7	g/t Ag	244	2,810	2.7	g/t Ag	244
Copper	-	-	% Cu	-	2,810	0.4	% Cu	11	2,810	0.0	% Cu	11
Trilogy Project												
Gold	310	2.2	g/t Au	22	4,320	0.8	g/t Au	113	4,630	0.9	g/t Au	135
Silver	310	45.0	g/t Ag	449	4,320	55.0	g/t Ag	7,638	4,630	54.3	g/t Ag	8,086
Copper	310	0.4	% Cu	1	4,320	1.1	% Cu	48	4,630	0.0	% Cu	49
Total Reserve												
Gold	310	2.2	g/t Au	22	7,130	1.8	g/t Au	420	7,440	1.8	g/t Au	442
Silver	310	45.0	g/t Ag	449	7,130	34.4	g/t Ag	7,882	7,440	34.8	g/t Ag	8,330
Copper	310	0.4	% Cu	1	7,130	0.8	% Cu	59	7,440	0.0	% Cu	60

Competent person's statement

Rounding may give rise to unit discrepancies in this table

The information in this presentation that relates to Phillips River's Ore Reserve estimates is based on information compiled by Mr Geoff Davidson, who is a Member of The Australasian Institute of Mining and Metallurgy. Mr Davidson is a Principal Consultant and Director of Mining and Cost Engineering Pty Ltd and has sufficient experience which is relevant to the style of mineralisation and type of deposit under consideration and to the activity which he is undertaking to qualify as a Competent Person as defined in the 2004 Edition of the 'Australasian Code for Reporting of Exploration Results, Mineral Resources and Ore Reserves'. Mr Bruce Armstrong has consented to the inclusion in the report of the matters based on his information in the form and context in which it appears.

