

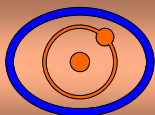
Superior Resources Limited

Superior Resources Limited

Presentation

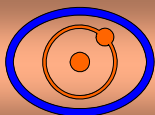
November 2012

Mining
2012



This presentation has been prepared by the management of Superior Resources Limited (the Company) for the benefit of brokers, analysts and investors and not as specific advice to any particular party or persons. The information is based on publicly available information, internally developed data and other sources. Where an opinion is expressed in this presentation, it is based on the assumptions and limitations mentioned herein and is an expression of present opinion only. No warranties or representations can be made as to origin, validity, accuracy, completeness, currency or reliability of the information. The Company disclaims and excludes all liability (to the extent permitted by law) for losses, claims, damages, demands, costs and expenses of whatever nature arising in any way out of or in connection with the information, its accuracy, completeness or by reason of reliance by any person on any of it. Where the Company expresses or implies an expectation or belief as to the success of future exploration and the economic viability of future project evaluations, such expectation or belief is expressed in good faith and is believed to have a reasonable basis. However, such expected outcomes are subject to risks, uncertainties and other factors which could cause actual results to differ materially from expected future results. Such risks include, but are not limited to, exploration success, metal price volatility, changes to current mineral resource estimates or targets, changes to assumptions for capital and operating costs as well as political and operational risks and governmental regulation outcomes. The Company does not have any obligation to advise any person if it becomes aware of any inaccuracy in or omission from any forecast or to update such forecast.

The information in this presentation that relates to exploration results is based on information compiled by Mr Ken Harvey, a full-time employee of the Company, who is a Member of the Australasian Institute of Mining and Metallurgy and a Member of the Australian Institute of Geoscientists. Mr Harvey has sufficient experience which is relevant to the style of mineralisation and type of deposit under consideration and to the activity which he is undertaking to qualify as a Competent Person as defined in the 2004 Edition of the 'Australasian Code for Reporting of Exploration Results, Mineral Resources and Ore Reserves'. Mr Harvey consents to the inclusion in this presentation of the matters based on his information in the form and context in which it appears.



Board

David Horton – Chairman
Peter Hwang – Non-Executive Director
Ken Harvey – Managing Director

Principal Aims

Discovery of:

- Mount Isa style copper deposits
- VMS copper-gold deposits
- Tick Hill gold deposits

ASX

Listed on ASX in November 2007

Shares On Issue

81.7 Million Shares (listed)
No options
Top 20 hold 60% of Shares

Price

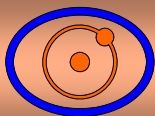
6.0c

Market Cap

\$5M

Funds

\$1.1M Cash and Liquid Assets

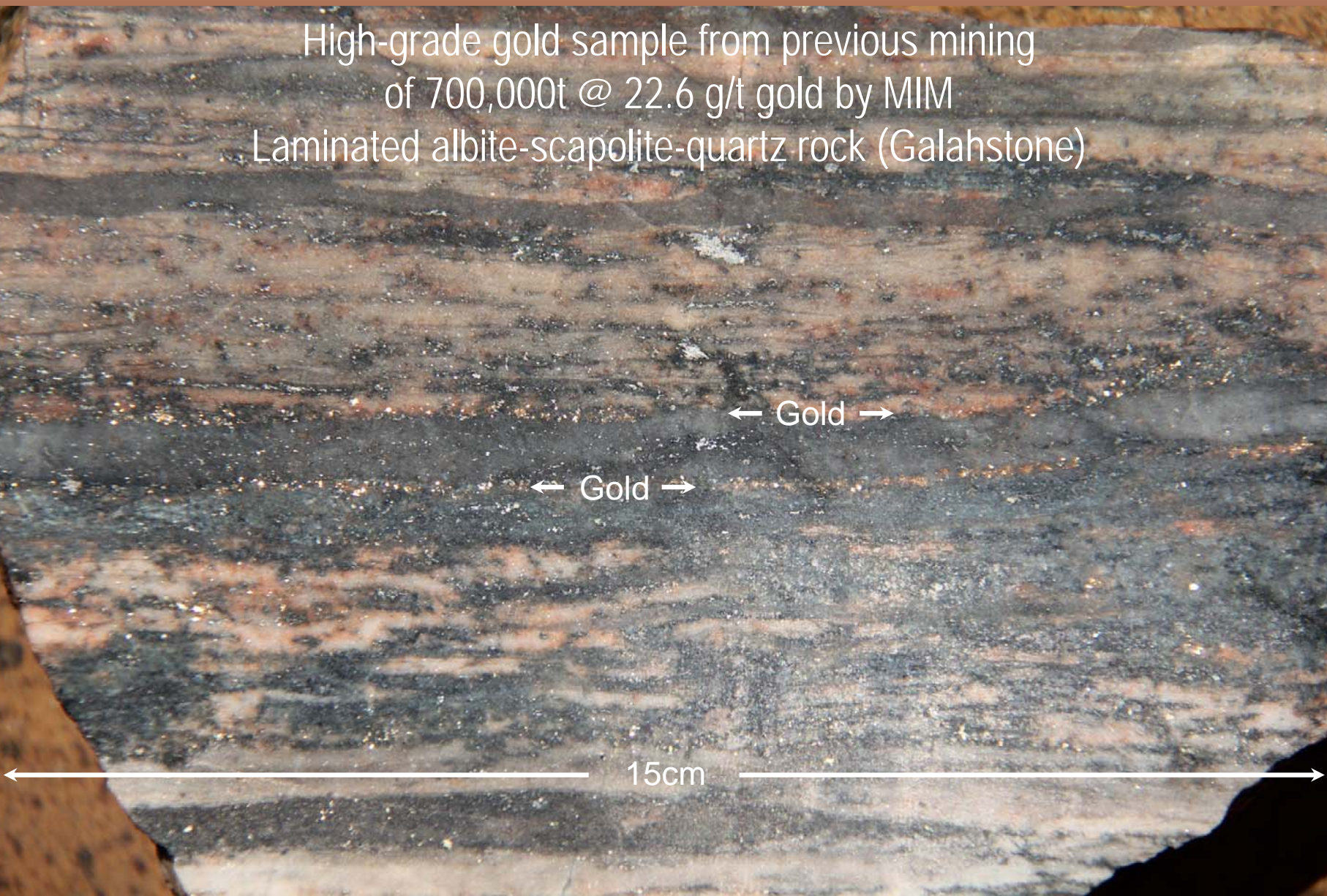


Tick Hill Project

Exploration for
High-Grade Gold
Joint Venture



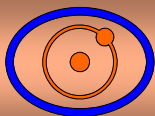
High-grade gold sample from previous mining
of 700,000t @ 22.6 g/t gold by MIM
Laminated albite-scapolite-quartz rock (Galahstone)



← Gold →

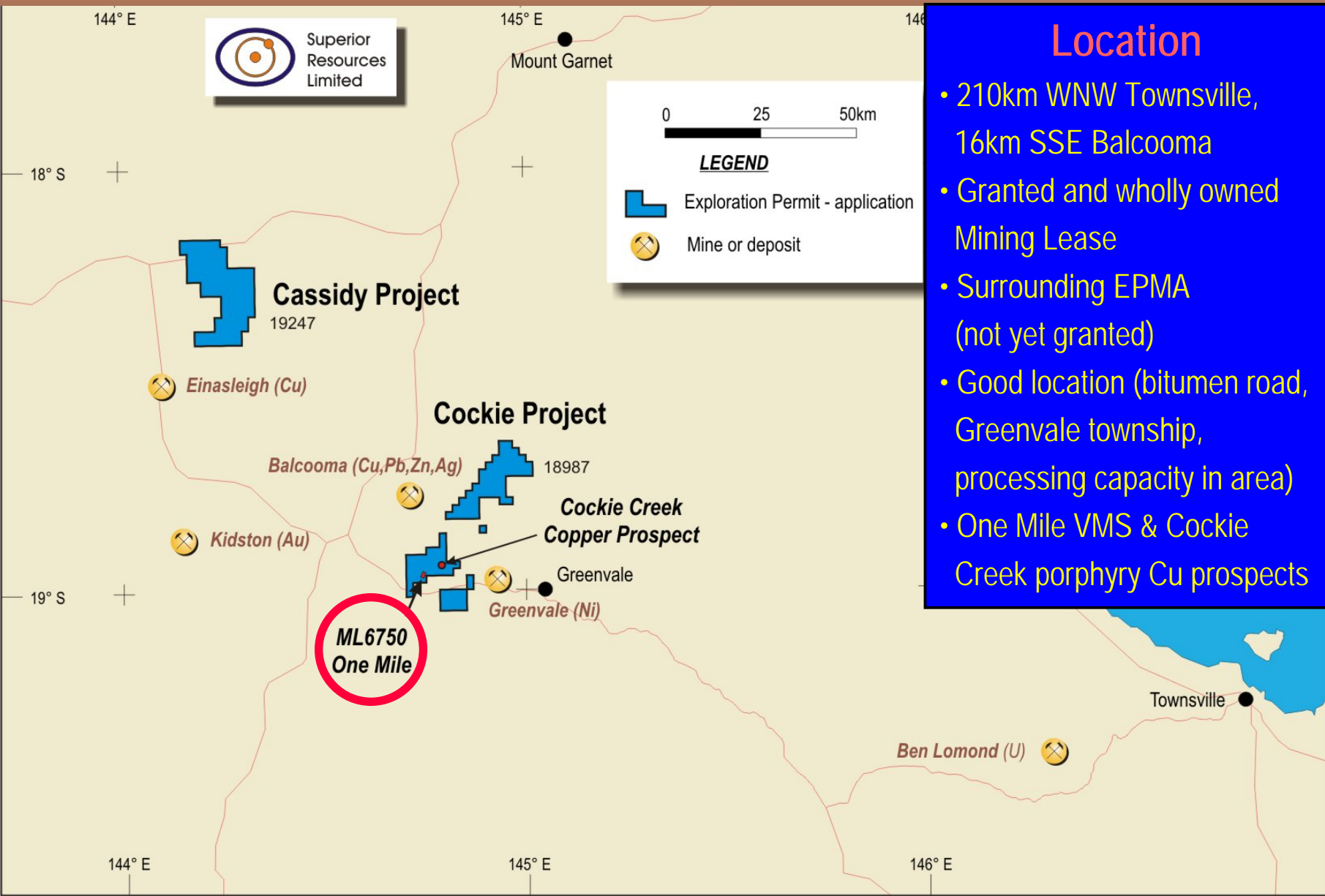
← Gold →

15cm



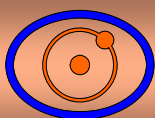
One Mile Project

Exploration for
Copper-Gold-Zinc-Silver
VMS Deposit



Location

- 210km WNW Townsville, 16km SSE Balcooma
- Granted and wholly owned Mining Lease
- Surrounding EPMA (not yet granted)
- Good location (bitumen road, Greenvale township, processing capacity in area)
- One Mile VMS & Cockie Creek porphyry Cu prospects



Summary

- Outcropping VMS gossan
- Large sulphide (pyrite) body
- Near-economic Cu-Au-Zn-Ag intersections
- Limited drilling coverage
- Searching for a thickened area of the sulphide body with better copper and gold grades
- Open at depth to north and south
- Promising basic to intermediate volcanic host sequence
- Untested geophysical anomalies in surrounding area
- Cockie Creek porphyry copper prospect:
5km northeast of One Mile
intersections to 90m @ 0.5% Cu

← Drilling Massive Sulphides

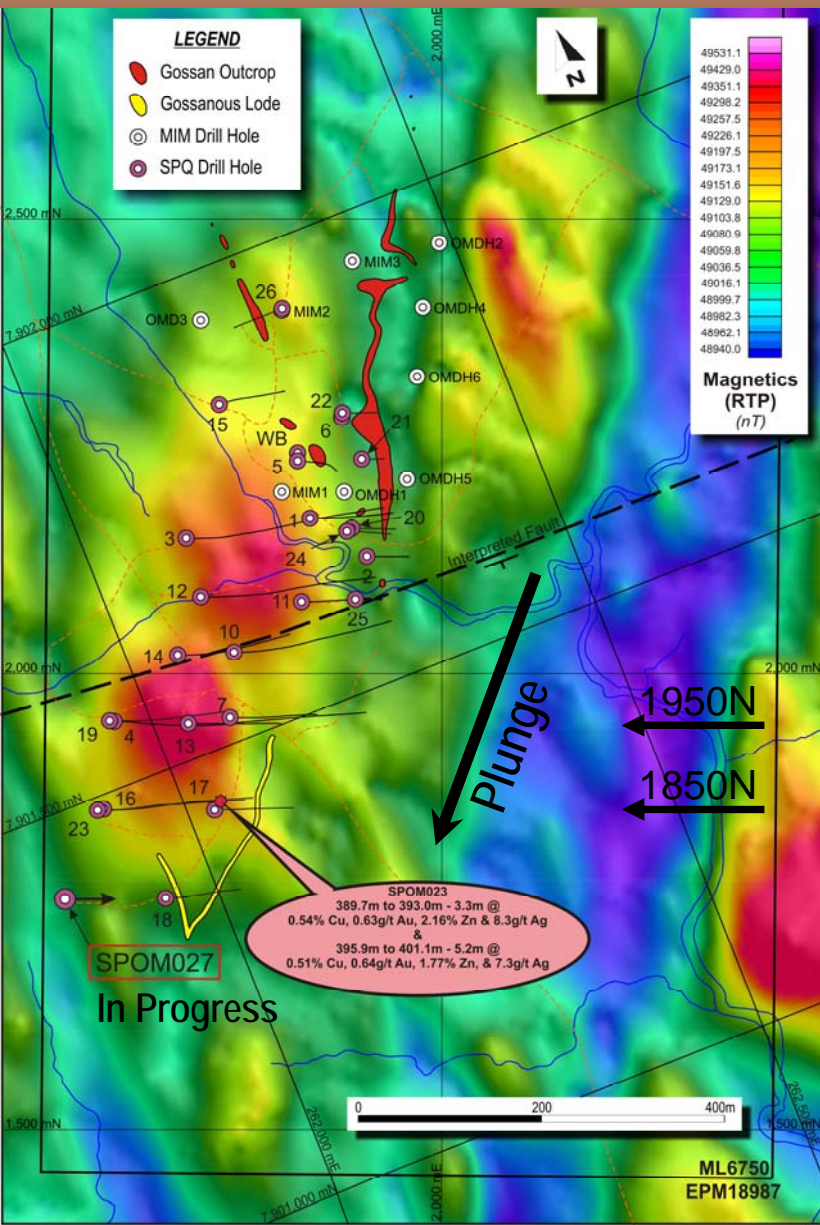


Superior Resources Limited

One Mile Project – Gossan

A Substantial Gossan on Massive Pyrite





Gossans and Drill Holes on Magnetics

- Gossan/Lode extends over 800m strike length
- Improvement in width and grade of the massive and semi-massive sulphides to the south down the plunge of the sulphide body
- Best intersection from drilling in hole SPOM023 with 21.3m @ 0.31% Cu, 0.43g/t Au, 0.92% Zn including:

3.3m @ 0.54% Cu, 0.63g/t Au, 2.16% Zn, 8.3g/t Ag (1.59% Cu equivalent)* and
5.2m @ 0.51% Cu, 0.64g/t Au, 1.77% Zn, 7.3g/t Ag (1.46% Cu equivalent)*

- Gold (g/t) to copper (%) ratio greater than 1:1
- Enclosing pyritic alteration zone thickens and intensifies to the southwest

*Copper equivalent value in % = copper grade in % + 0.681 X gold grade in g/t + 0.242 X zinc grade in % + 0.011 X silver grade in g/t

Copper equivalent based on prices of \$7177/t Cu, \$1520/oz Au, \$1738/t Zn, \$26/oz Ag

All intersections widths are downhole widths



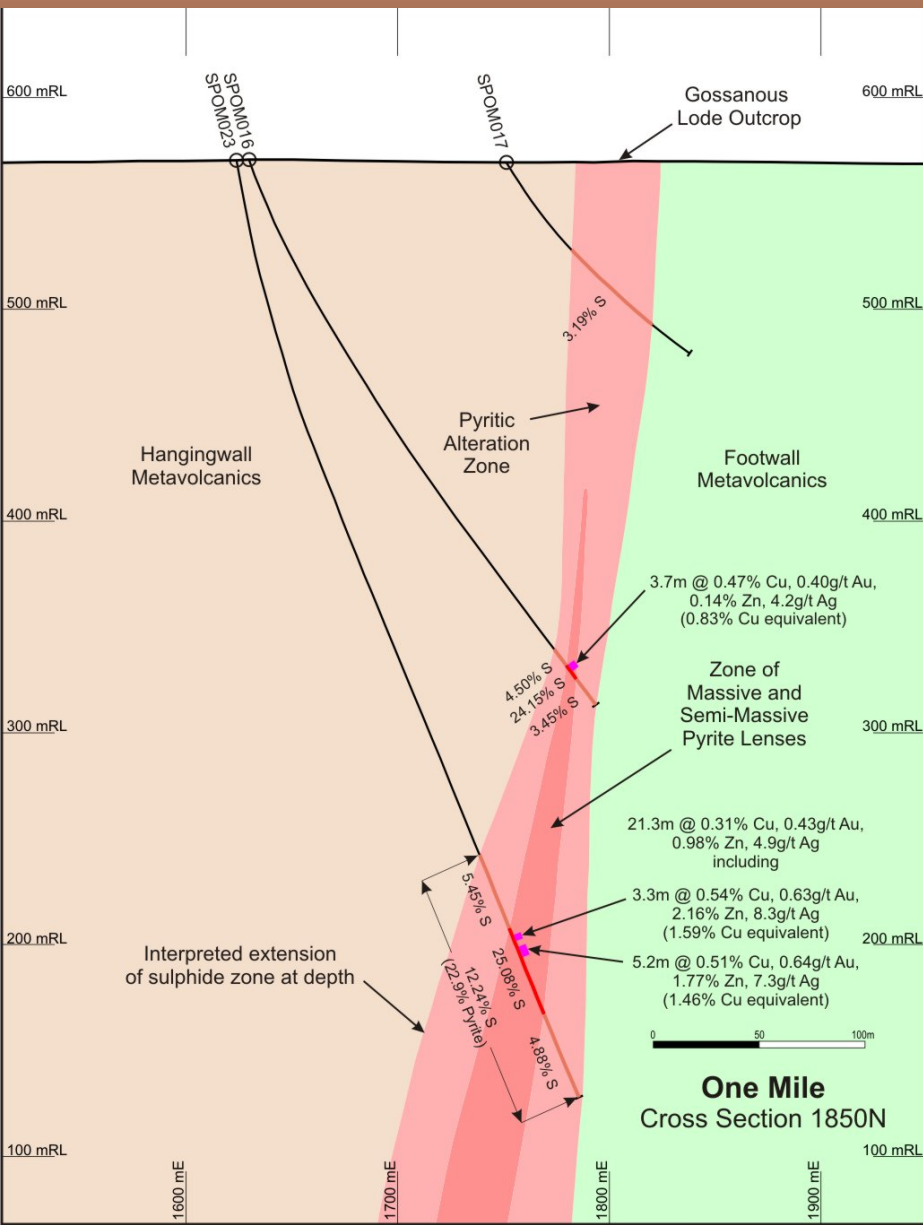
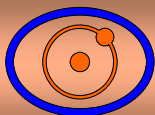
Cross Section 1950N (2011)

- Gossanous lode outcrop
- Hole SPOM013 - narrow pyritic alteration zone enclosing a thin massive / semi-massive sulphide lode (0.47% Cu eq.)*
- Hole SPOM004 - narrow pyritic alteration zone enclosing a wider massive / semi-massive sulphide lode (1.35% Cu eq.)*
- Gave encouragement to drill cross section 1850N - 100m south (next slide)



*Copper equivalent value in % = copper grade in % + 0.681 X gold grade in g/t + 0.242 X zinc grade in % + 0.011 X silver grade in g/t

Copper equivalents based on prices of \$7177/t Cu, \$1520/oz Au, \$1738/t Zn, \$26/oz Ag
All intersections widths are downhole widths



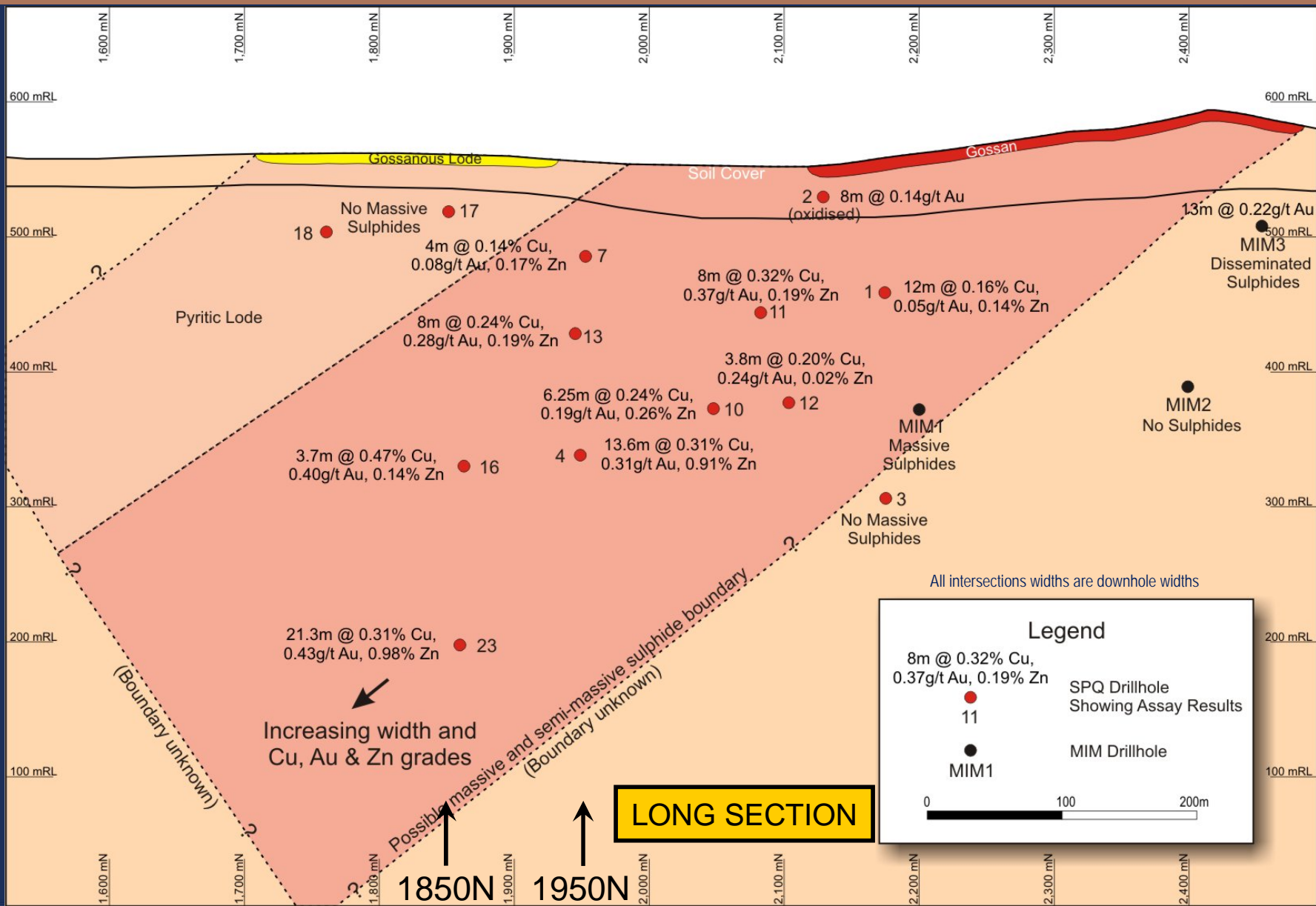
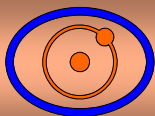
Cross Section 1850N (2012)

- Gossanous lode outcrop
- Hole SPOM016 - narrow pyritic alteration zone enclosing a thin massive / semi-massive sulphide lode (0.83% Cu eq.)*
- Hole SPOM023 - wide pyritic alteration zone enclosing a wide massive / semi-massive sulphide zone (1.5% Cu eq.)*
- Thickening of both pyritic alteration zone and sulphide zone at depth with increasing copper, gold, zinc and silver grades
- Prospect of a mineralised zone in the vicinity of hole SPOM023 - along strike (north or south) or at depth
- Gold (g/t Au) to copper (%) ratio > 1:1

*Copper equivalent value in % = copper grade in % + 0.681 X gold grade in g/t + 0.242 X zinc grade in % + 0.011 X silver grade in g/t

Copper equivalents based on prices of \$7177/t Cu, \$1520/oz Au, \$1738/t Zn, \$26/oz Ag)

All intersections widths are downhole widths





Drill Hole SPOM012

- Massive and semi-massive sulphides (pyrite with chalcopyrite and sphalerite)
- Coarse grained due to amphibolite metamorphic grade
- Alteration – muscovite (after sericite), biotite, phlogopite sillimanite and silica





Superior Resources Limited

One Mile Project – Main Lode



Superior
Resources
Limited

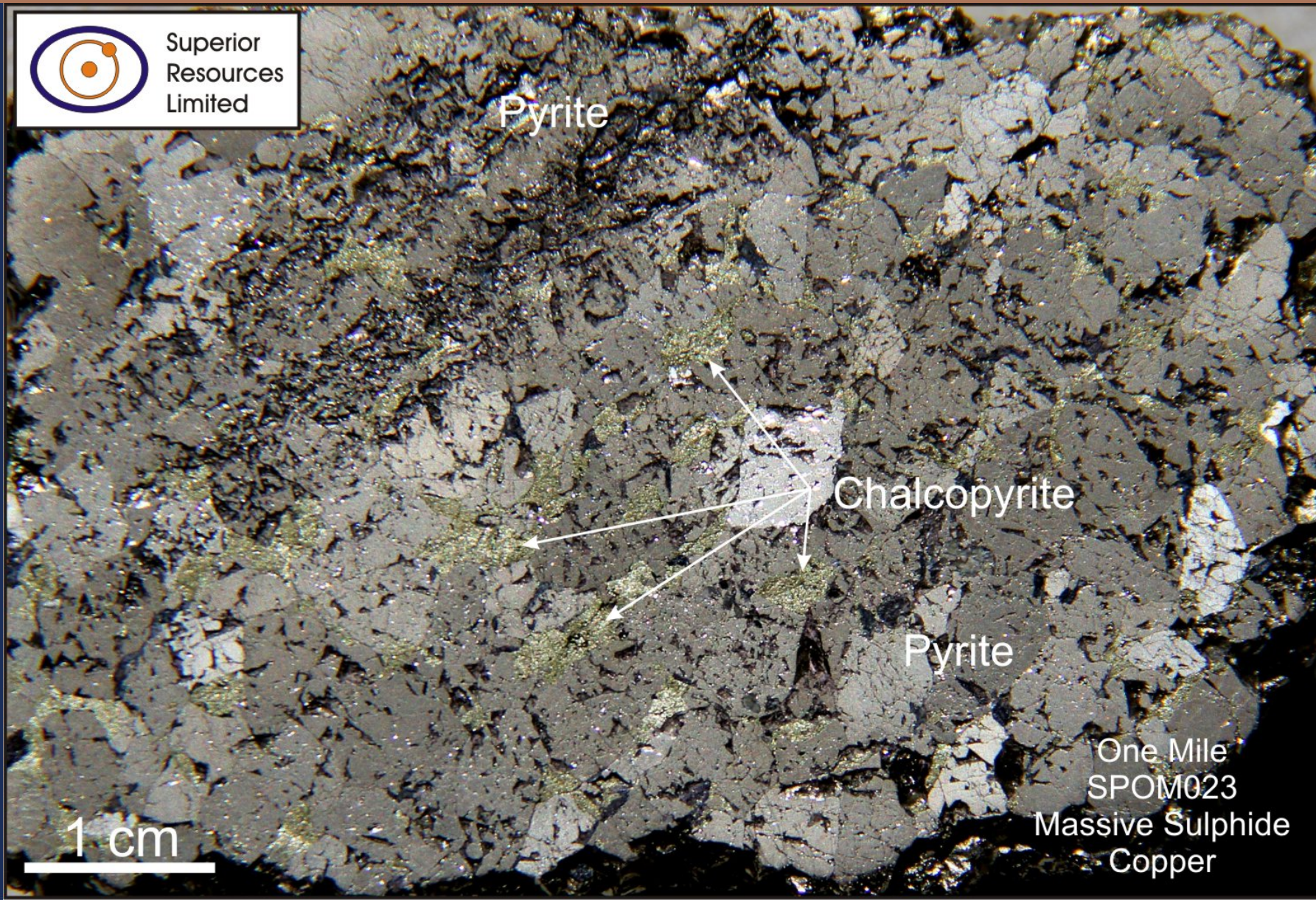
Pyrite

Chalcopyrite

Pyrite

1 cm

One Mile
SPOM023
Massive Sulphide
Copper





Superior Resources Limited

One Mile Project – Main Lode



Superior
Resources
Limited

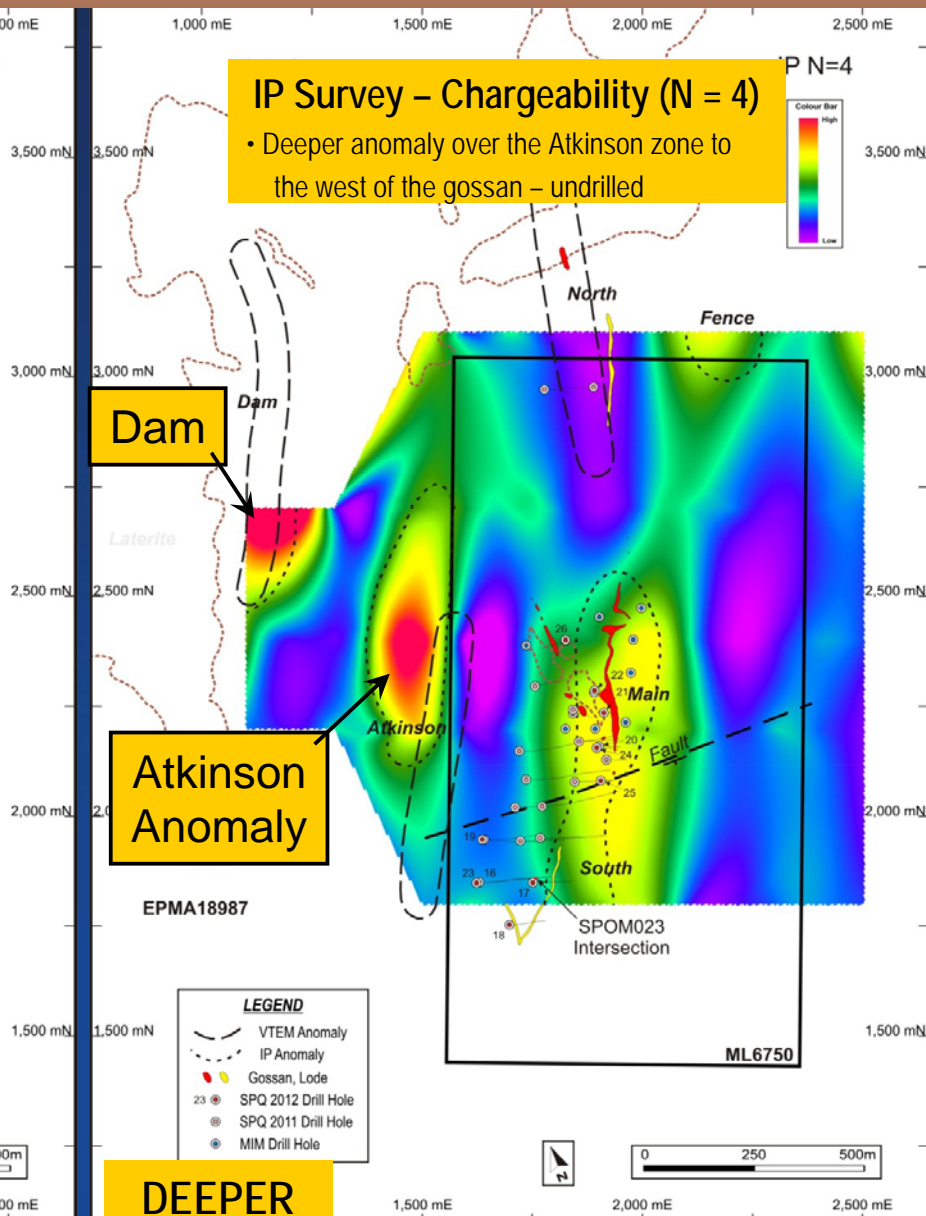
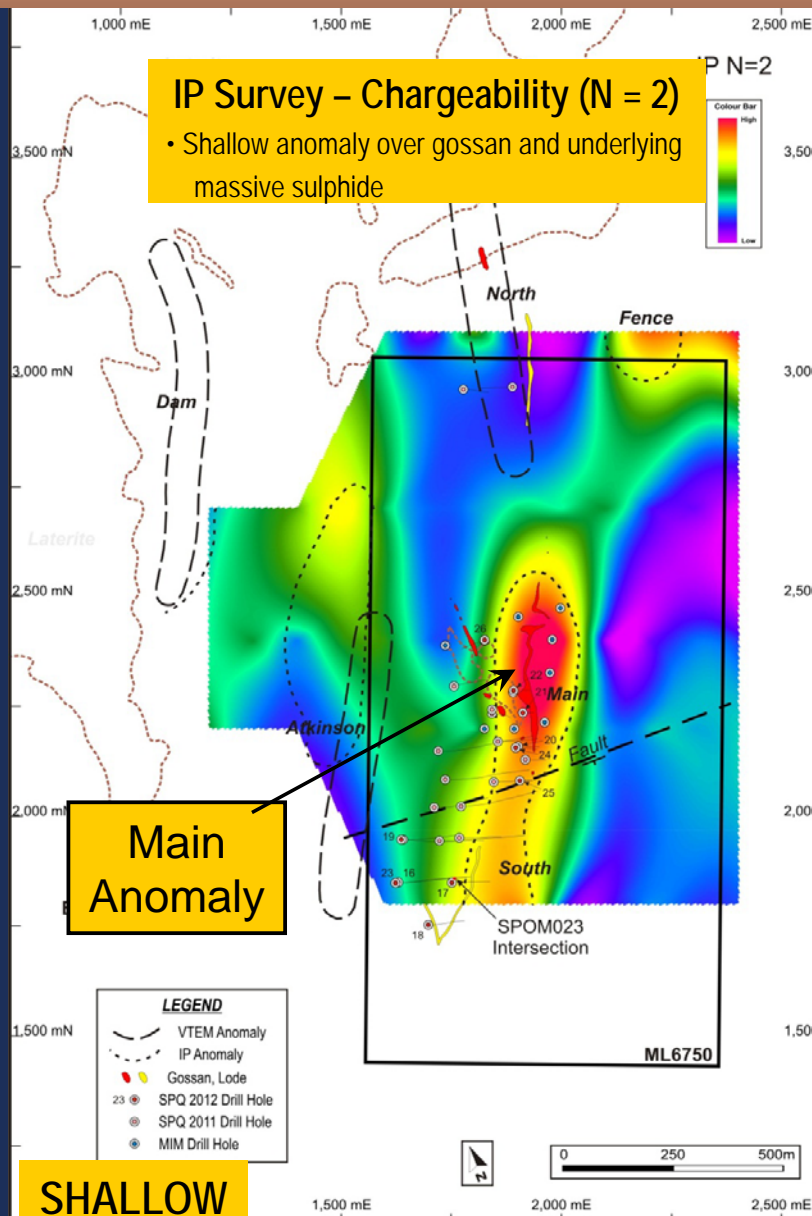
Pyrite

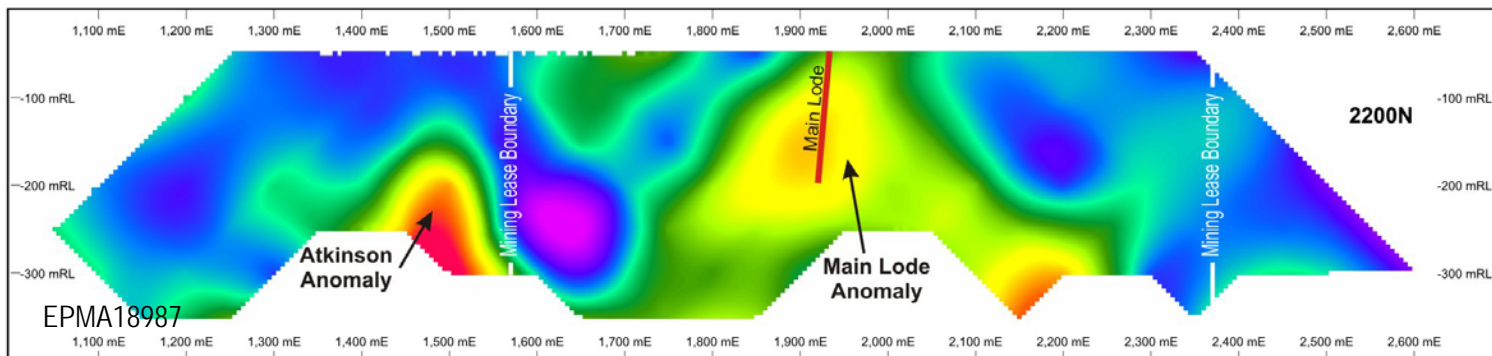
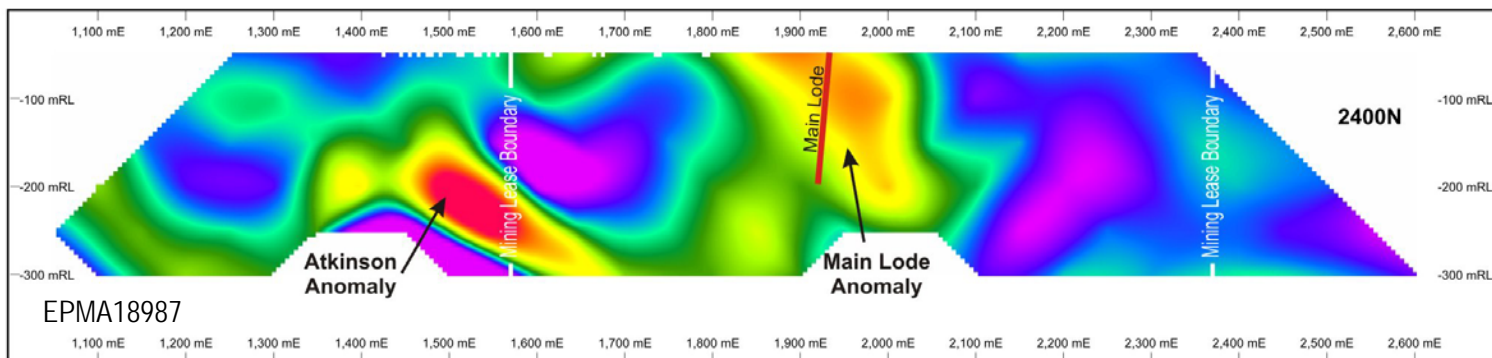
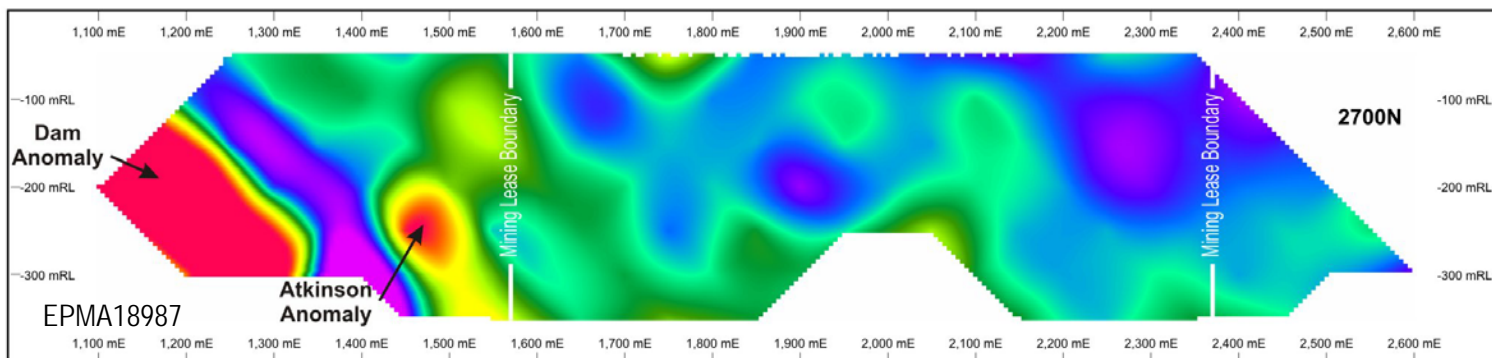
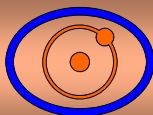
Sphalerite

Pyrite

1 cm

One Mile
SPOM023
Massive Sulphide
Zinc



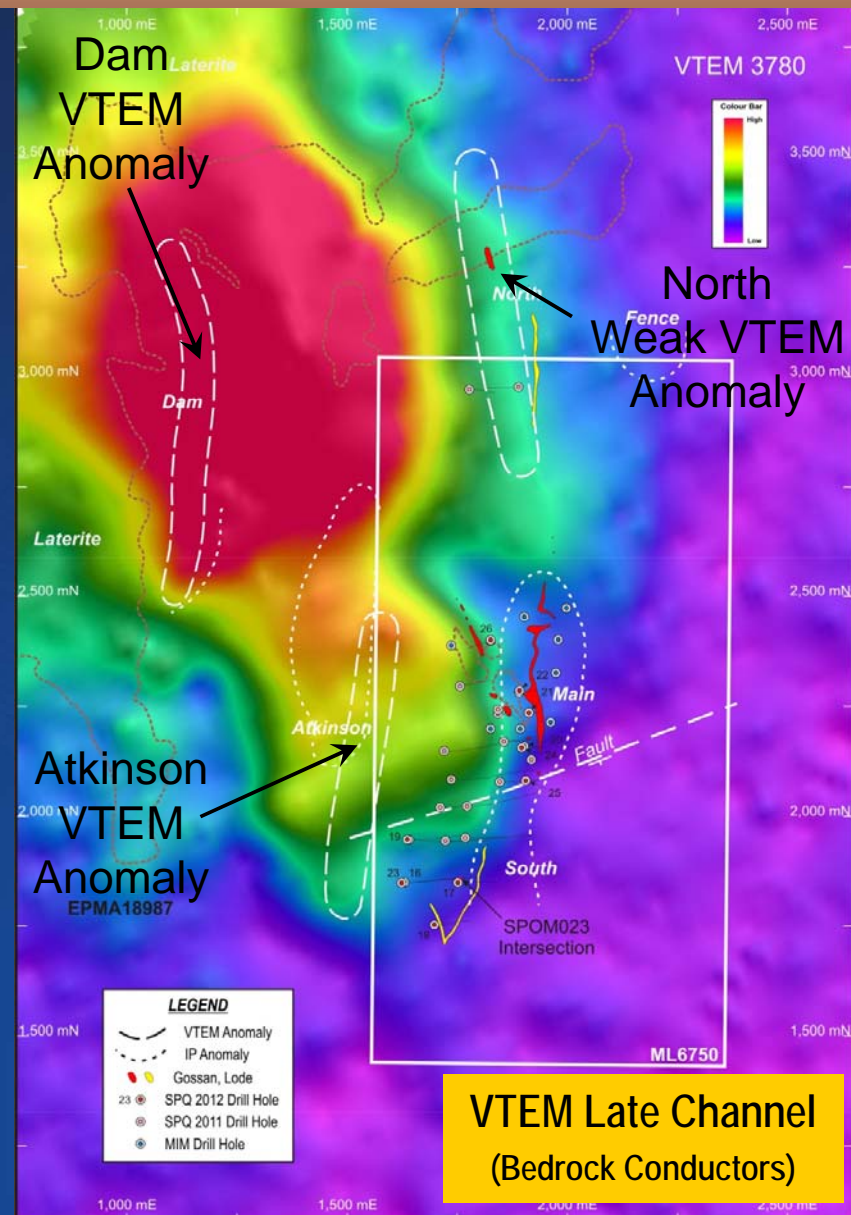
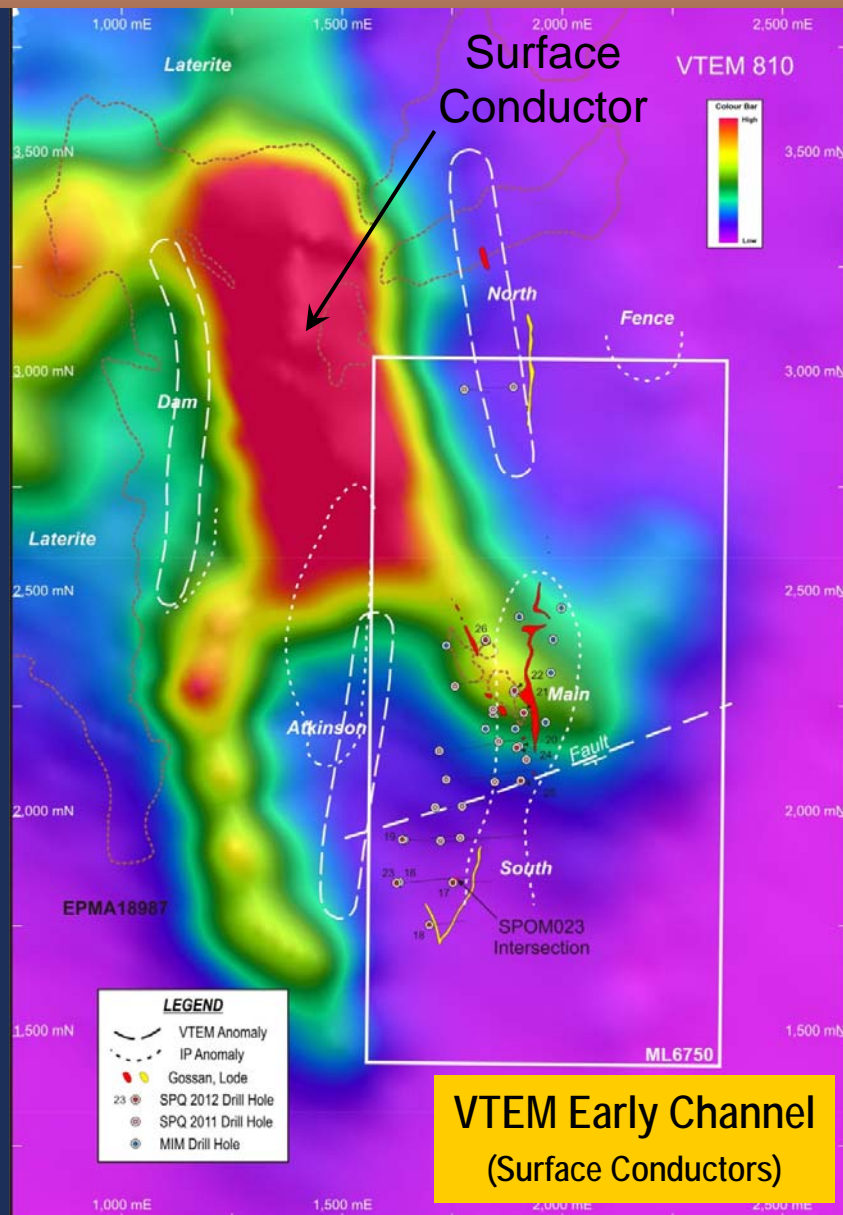
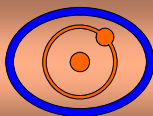


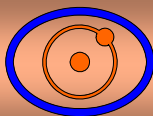
CONTRACTOR: SEARCH EXPLORATION SERVICES
OPERATOR: PAUL McINNIS
TRANSMITTER: GDP-10
RECEIVER: GDP-16
CONFIGURATION: DIPOLE - DIPOLE
ELECTRODE SPACING: 100M

Normalised Chargeability
PSEUDOSECTIONS

0 100 200m

ML6750 "ONE MILE"
INDUCED POLARISATION SURVEY
COMPLETED BY CEC
JULY 1990

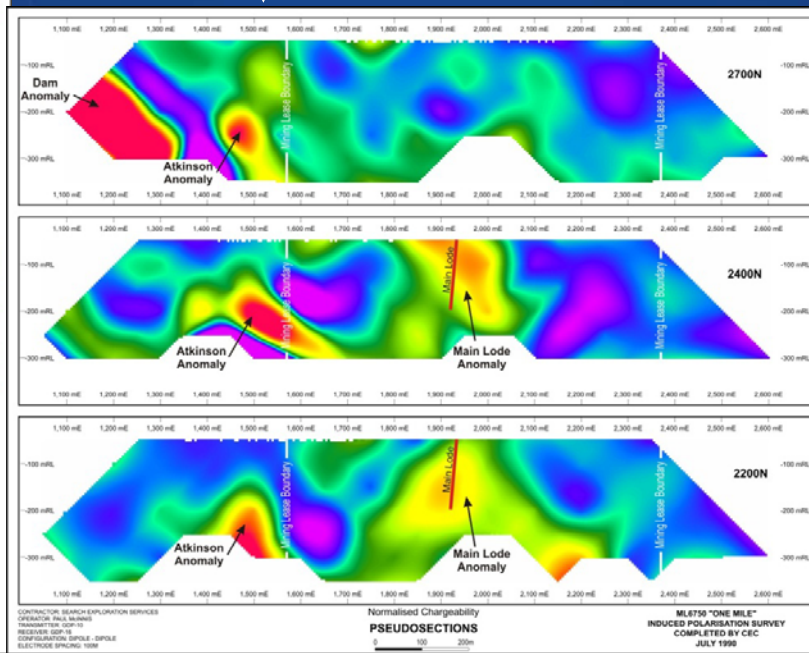
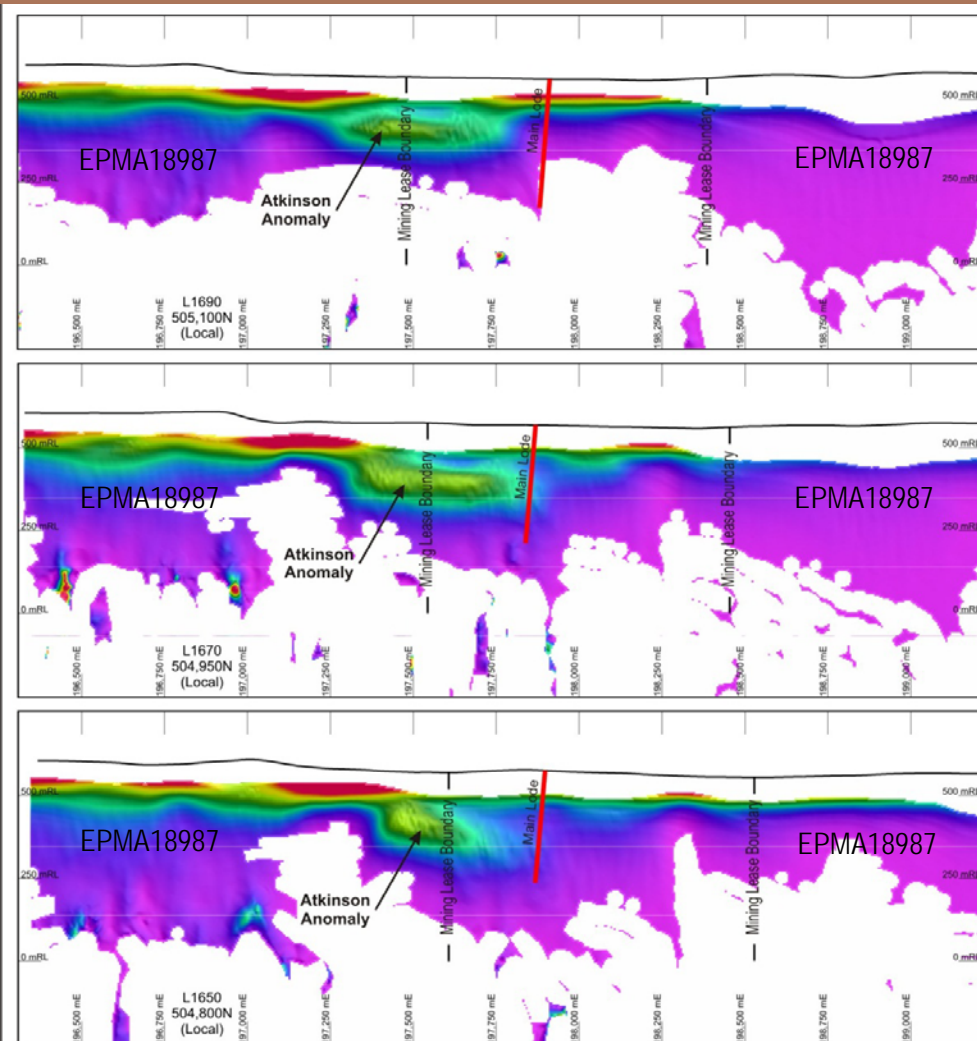




← Conductivity Sections

- Derived from VTEM data
- Atkinson anomaly is a prime drilling area
- Coincident with IP anomaly
- Depth – 150m
- Expected to be steeply dipping

↙ Chargeability Sections



VTEM survey completed by Beacon Minerals Limited
 Conductivities interpreted using EMaxAir with Sharpening ON
 Grid Shown is Local VTEM Grid
 Common Point: 200,000E; 500,000N (Local) = 259,995E; 7,896,595N (MGA)
 Local North = 46.9 degrees (MGA)

**One Mile Mining Lease
 VTEM Conductivity Sections
 L1650 to L1690
 Looking North
 Local VTEM Grid**

CONTRACTOR: SEARCH EXPLORATION SERVICES
 OPERATOR: PAUL BARNES
 TRANSMITTER: GEM-10
 RECEIVER: GEM-10
 RESOLUTION: 100m
 ELECTRODE SPACING: 100m
 Normalised Chargeability
 PSEUDOSECTIONS
 0 100 200m
 MILESTONE "ONE MILE"
 INDUCED POLARISATION SURVEY
 COMPLETED BY CEC
 JULY 1990

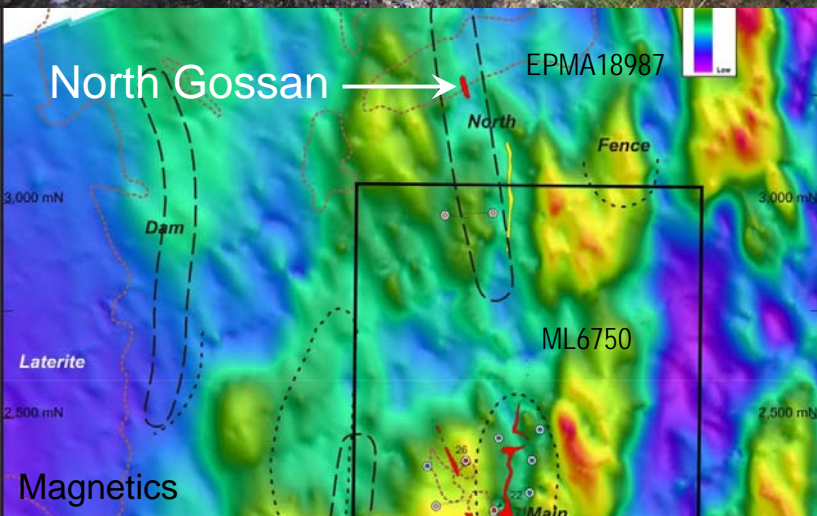


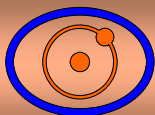
North Gossan

- Large gossan outcrop after massive sulphides protruding from laterite – not drilled

North Gossan

- Close-up photograph of gossan outcrop





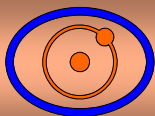
Hole	Easting MGA Z55	Northing MGA Z55	From (m)	To (m)	Length (m)	Cu (%)	Au (g/t)	Mo (ppm)
CRC002	267380	7904295	0	68	68	0.74	0.12	92
CRC009	267356	7904243	66	163	97	0.48	0.07	114
CRC010	267353	7904283	11	85	74	0.42	0.08	78
CRC011	267320	7904295	1	80	79	0.45	0.06	76
CRC014	267019	7904155	15	56	41	0.50	0.10	48
CRC017	267378	7904226	121	215	94	0.53	0.08	99
CRC023	267037	7904120	53	141	88	0.43	0.06	49
CRC026	266995	7904137	11	84	73	0.44	0.05	22
D1	267448	7904183	180	216	36	0.57	0.10	28
D3	267075	7904227	56	104	48	0.48	0.10	94
P11	267403	7904244	50	108	58	0.64	0.07	-
P12	267339	7904345	50	100	50	0.44	0.07	-
P16	267370	7904307	0	40	40	0.75	0.13	-

Drill Hole Intersections

Cockie Creek Porphyry Copper Prospect

Located 5km northeast of One Mile





Main Zone

Improving widths and copper-gold-zinc-silver grades. Open at depth to the south and north

Other Areas (in EPMA18987)

Atkinson - coincident IP and VTEM anomalies – undrilled
North - large gossan outcrop protruding from laterite – undrilled
Dam - coincident strong IP and weak VTEM anomalies - undrilled.

Cockie Creek Porphyry Copper Prospect

5km from One Mile - Drill hole intersections to 90m @ 0.5% Cu.

Superior has a strong position in an area with excellent potential for a significant discovery