

Pedirka Basin (EP 97)  
&  
Otway Basin (PEL 154 & 155)

Upcoming Drilling Activity

October 2012

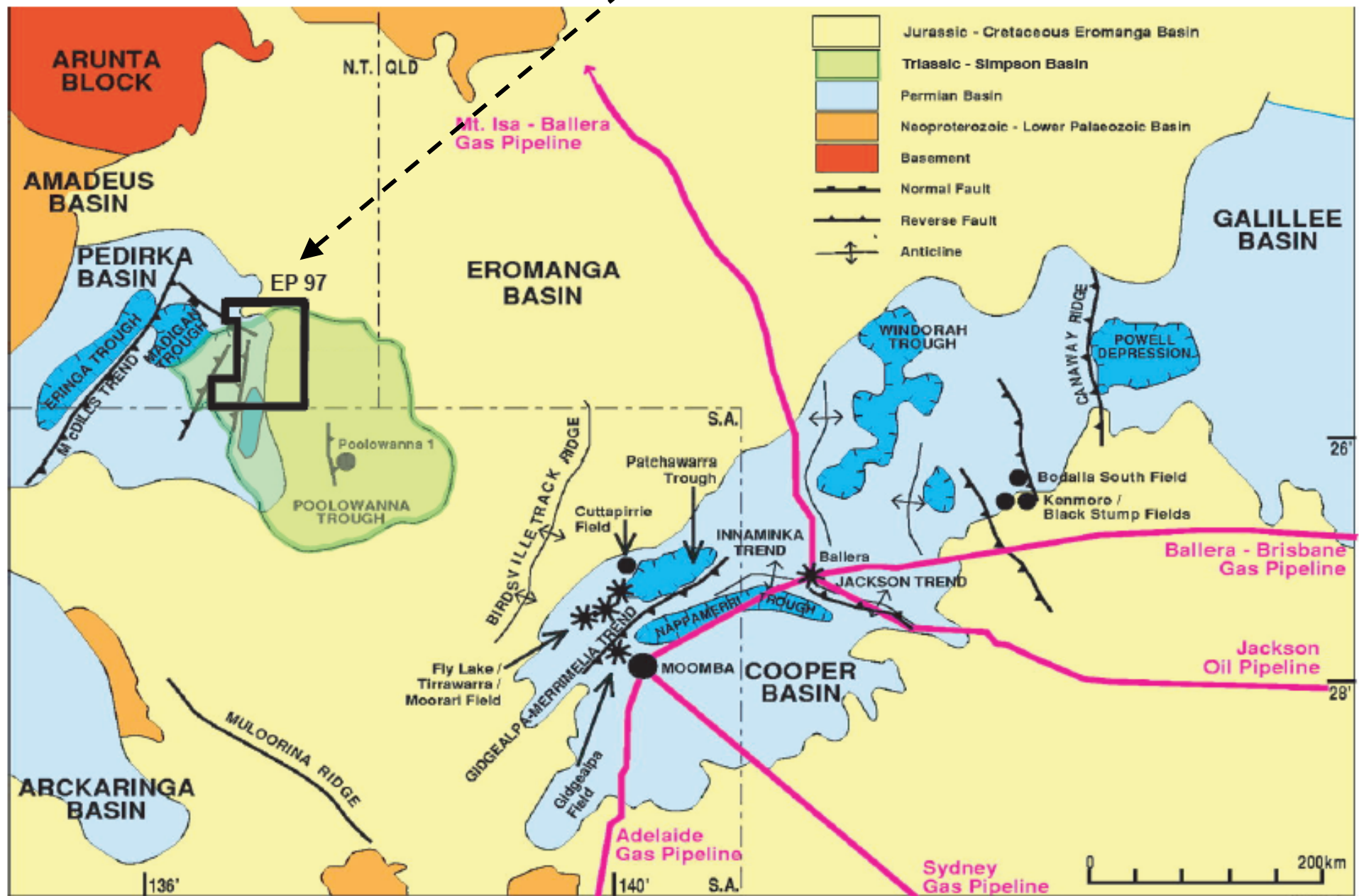
## **Disclaimer Notice**

This presentation has been prepared by Rawson Resources Limited (“Rawson” or the “Company”). It should not be considered as an offer or invitation to subscribe for or purchase any securities in the Company or as an inducement to make an offer or invitation with respect to those securities.

This presentation contains forward looking information. Such forecasts, projections and information are not a guarantee of future performance and involve unknown risks and uncertainties. Actual results and developments will almost certainly differ from those expressed or implied. To the maximum extent permitted by applicable laws, Rawson takes no responsibility and assumes no liability for, the authenticity, volatility, accuracy, suitability or completeness of, or any errors in or omission, from any information, statement or opinion contained in this presentation.

You should not act or refrain from acting in reliance on this presentation material. This overview of Rawson does not purport to be all inclusive or to contain all information which its recipients may require in order to make an informed assessment of the Company’s prospects. You should conduct your own investigation and perform your own analysis in order to satisfy yourself as to the accuracy and completeness of the information, statements and opinions contained in this presentation.

# Rawson Block EP 97 included in Santos – Central Farm-in

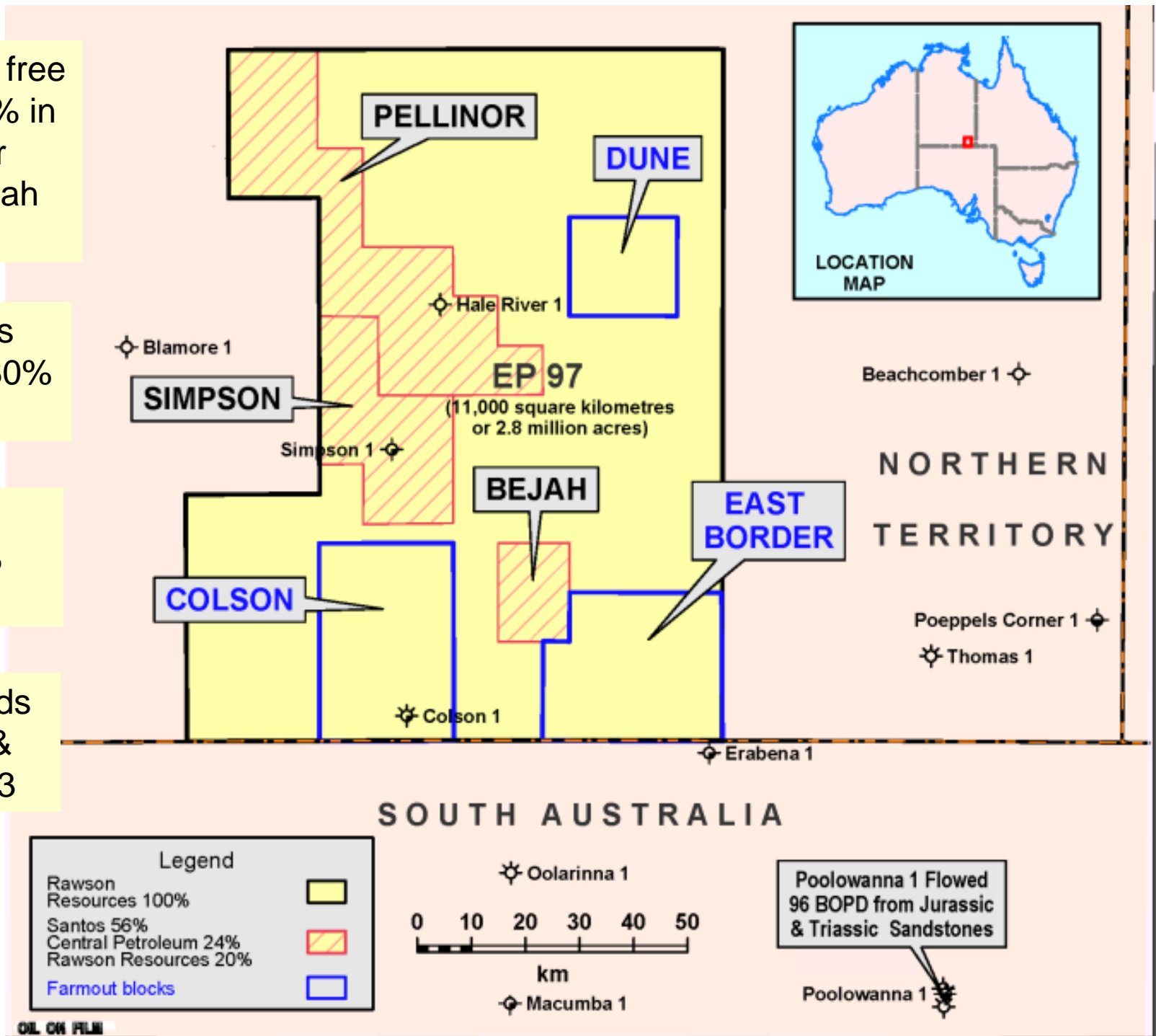


Rawson to be free carried for 20% in a well in either Pellinor or Bejah during 2013

Central/Santos already hold 80% of Simpson

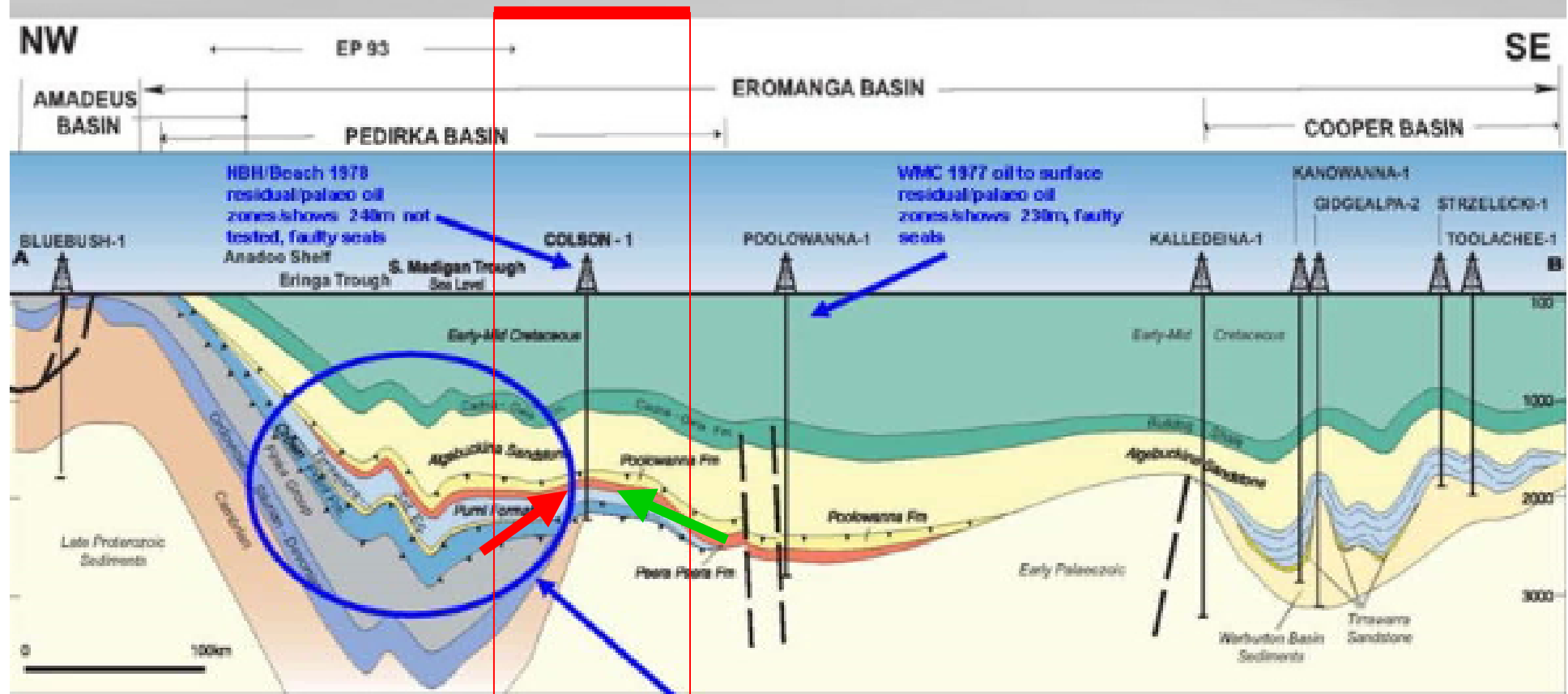
Remainder of EP97 is 100% Rawson

Rawson intends to drill Dune & Colson in 2013



# Pedirka Basin Cross Section

EP 97

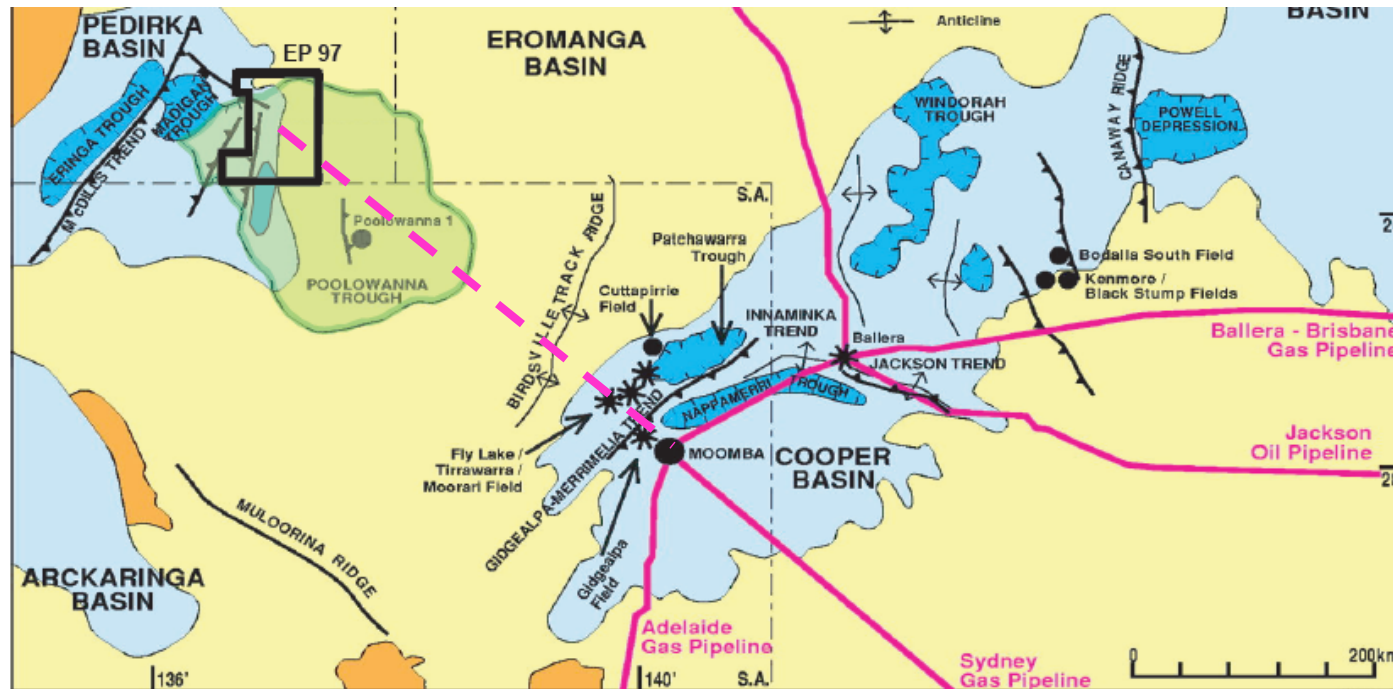


EP97 perfectly placed for oil/gas charge from West, East & South

No wells in most prospective part of the Pedirka: deeper, thicker source rocks, more mature, less deformed structures, better sealing horizons, close to kitchens



## Santos considers gas tie-in is straightforward



Easy  
pipeline  
lay terrain



Santos Vice President Eastern Australia, James Boulderstone, said that the Amadeus and Pedirka Basins and their proximity to existing infrastructure presented an opportunity for Santos to develop gas resources for the Australian market at the scale required to allow commercialisation.



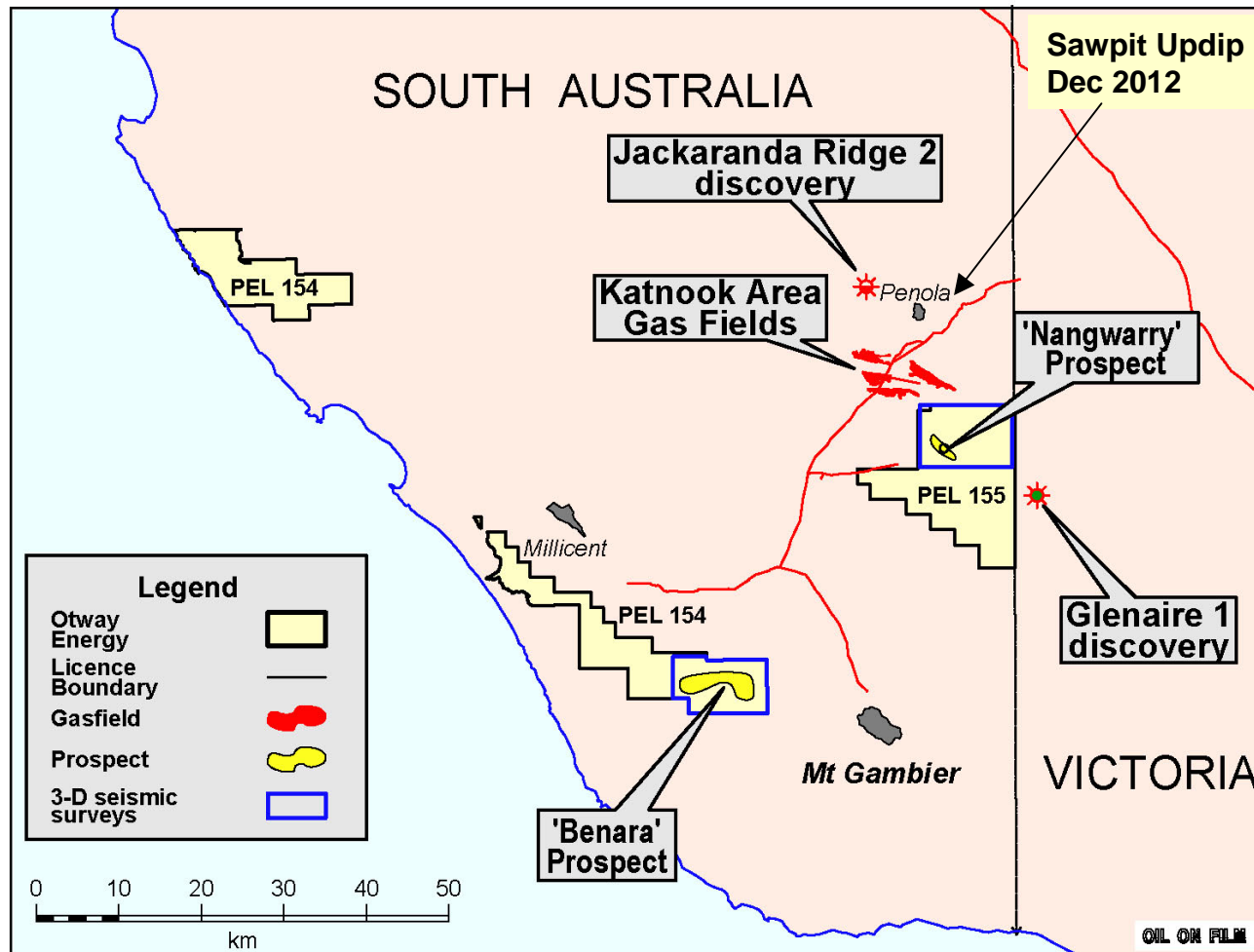
## Otway Basin Shale Gas Prospectivity



In the South Australian Otway Basin, five major elongate rift troughs have been identified by PIRSA as depocentres for Casterton Formation and Crayfish Group sediments: the Robe, Penola, Tantanoola, St Clair and Rivoli Troughs (listed in order of depth and lateral extent).

(Source: PIRSA 'Shale Gas Prospectivity  
In South Australia: Otway Basin' poster)

# Otway Basin PEL 154 & PEL 155, S.A.

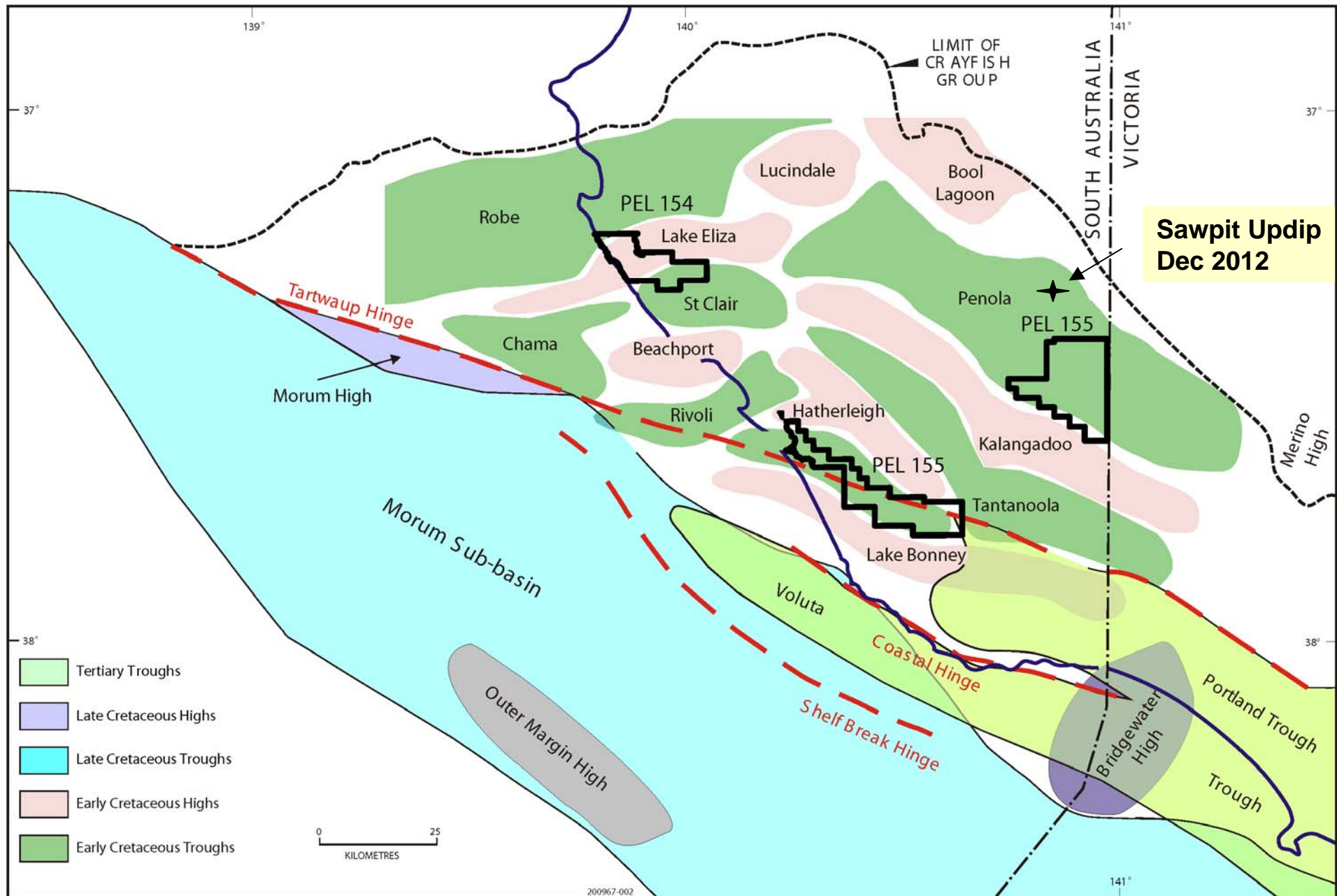


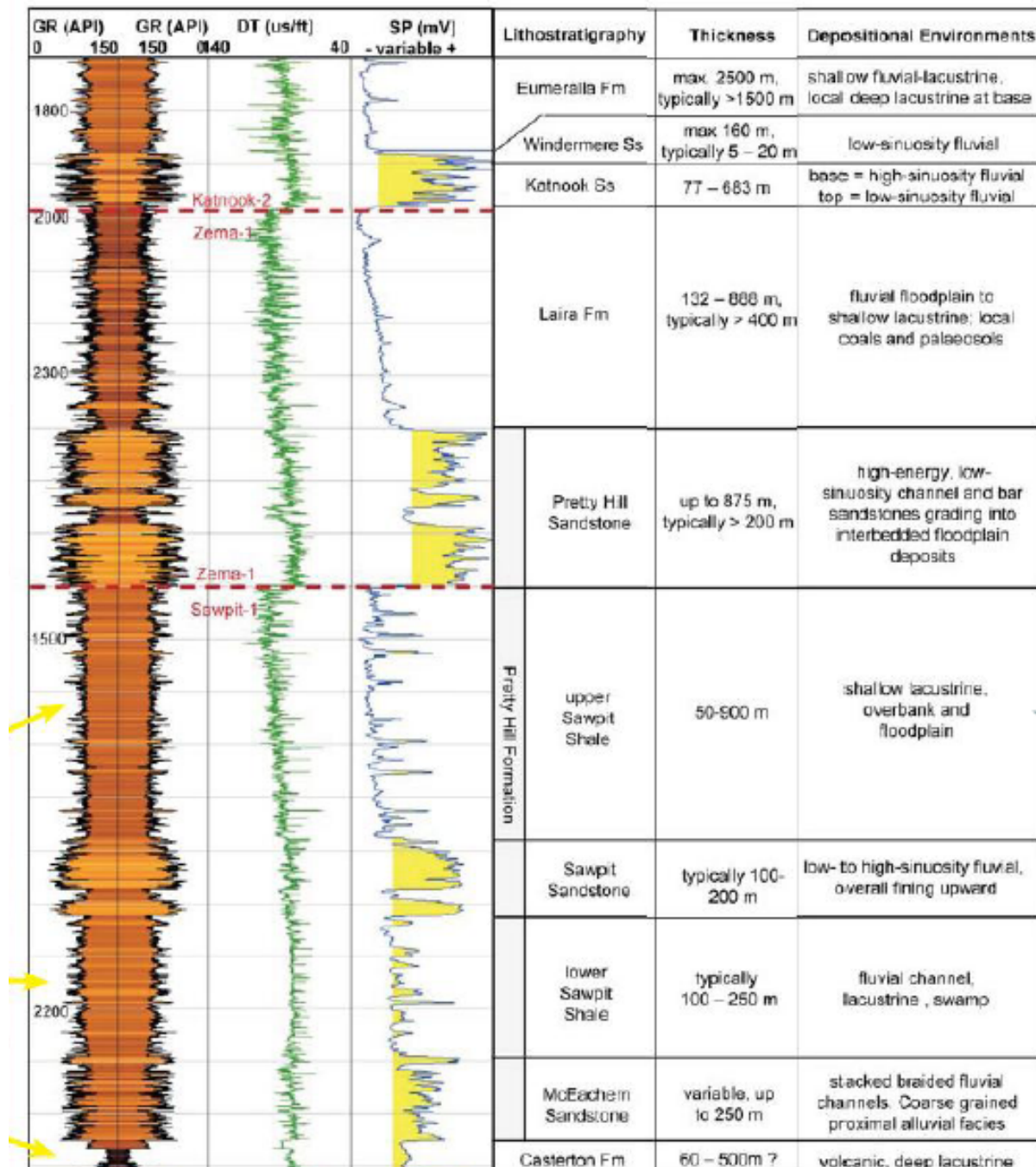
RAWSON RESOURCES LIMITED

- Otway Energy is the operator for PEL 154 & PEL 155.
- Rawson has a 37.5% interest in Otway Energy.
- In addition to conventional targets Nangwarry and Benara, the blocks are well located for shale gas plays
- Beach to drill two shale gas wells adjacent to Rawson blocks.
- Excellent pipeline infrastructure assists shale gas viability



## Crayfish Group shales in Troughs (green) are focus of shale gas exploration





Stratigraphic summary based on composite of Katnook-2, Zema-1 and Sawpit-1 wells

Sawpit Updip to test gas potential of Casterton & Sawpit shales in December

Thick primary shale gas targets

