

ASX ANNOUNCEMENT / MEDIA RELEASE

ASX:ABU

17th September, 2012

***High-Grade Discovery Confirmed at the Golden Hind Prospect  
with Drill Results including:  
6 metres averaging 80.56g/t Gold within  
17 metres averaging 29.43g/t Gold***

ABM Resources NL ("ABM" or "The Company") is pleased to announce the first drill results from the Golden Hind Prospect. Golden Hind is located 800 metres south of the Old Pirate Gold Deposit on the Company's Twin Bonanza Gold Camp Project in the Northern Territory of Australia.

***Golden Hind Drill Result Highlights:***

- Drill Hole GHRC100002 intersected:
  - 17 metres averaging 29.43g/t gold including:
    - 6 metres averaging 80.56g/t gold.
- Drill Hole GHRC100001 intersected:
  - 25 metres averaging 7.62g/t gold including:
    - 8 metres averaging 14.28g/t gold and
    - 1 metre grading 67.4g/t gold.
- Drill Hole GHRC100004 intersected:
  - 21 metres averaging 4.27g/t gold including:
    - 4 metres averaging 13.34g/t gold.
- Further 24 holes completed at the Golden Hind pending assay.

Darren Holden, Managing Director, said, "The Golden Hind discovery is very significant for ABM Resources. Its proximity to Old Pirate, the wide high-grade intersections and the coarse gold previously reported at surface make it likely that it will add significant open-pit ounces to the project. We look forward to bringing you further results shortly."

## Golden Hind Prospect

The Golden Hind Prospect is located approximately 800 metres south of the Company's Old Pirate High-Grade Gold Deposit. The prospect consists of gold bearing quartz veins hosted by sandstone and shale. Veins are interpreted to dip steeply to the south-west. High-grade mineralisation is currently interpreted to plunge approximately 50 degrees to the south within steeply dipping veins, however this model may change as further results are received.

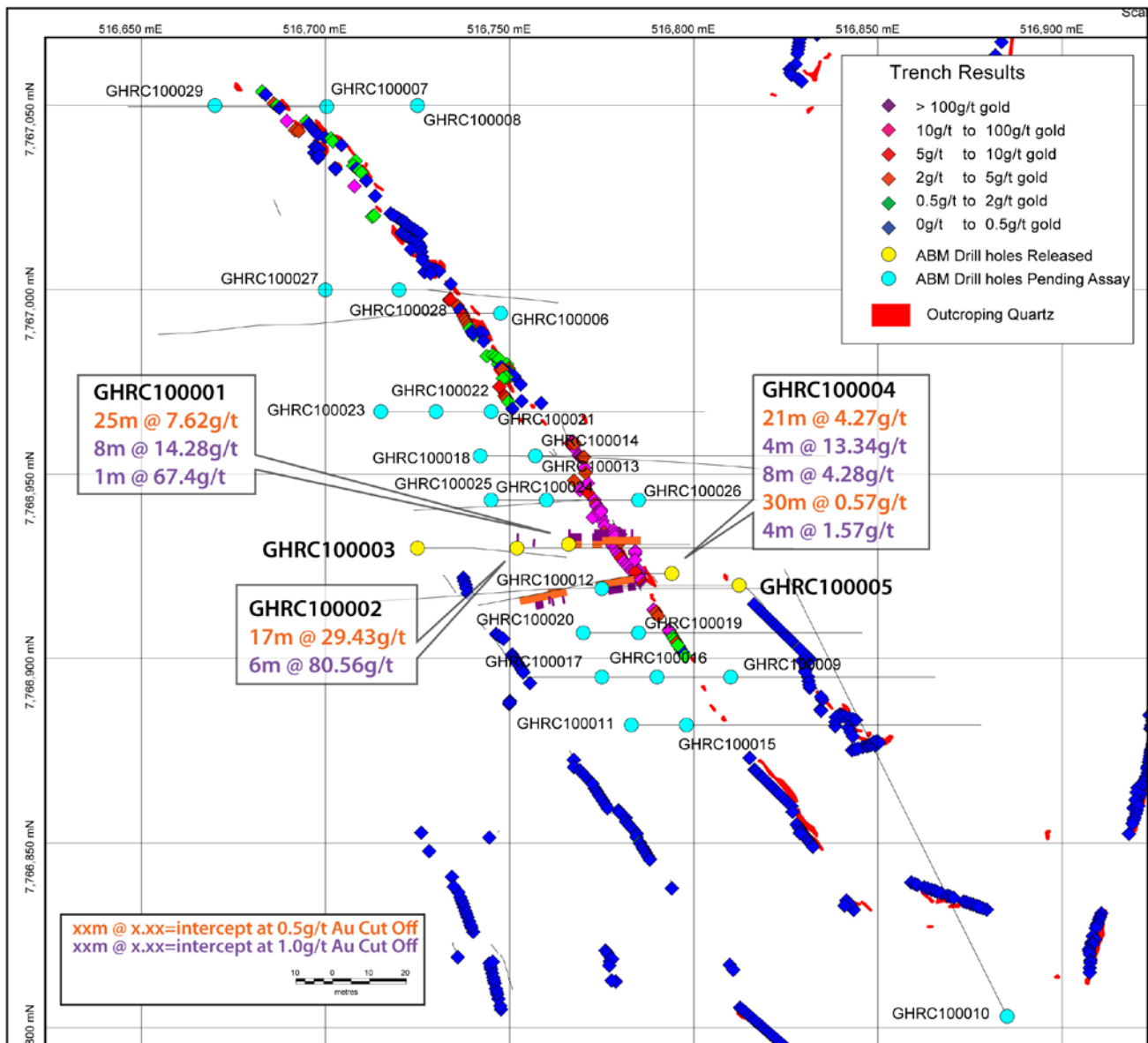


Figure 1. Map View of the Golden Hind Prospect.

The first five holes at the Golden Hind were drilled to test the orientation of veins. Holes GHRC100001 and GHRC100002 intersected high-grade mineralisation, whereas hole GHRC100003 is interpreted to have been drilled beneath the southerly plunging high-grade zone. Hole GHRC100004 was drilled sub-parallel to the system and intersected the footwall of the zone of the veins, however, due to the drill angle of the hole, did not intersect the main high-grade vein intersected in holes GHRC100001 and GHRC100002. Hole GHRC100005 was drilled in the footwall of the system and did not intersect significant mineralisation.

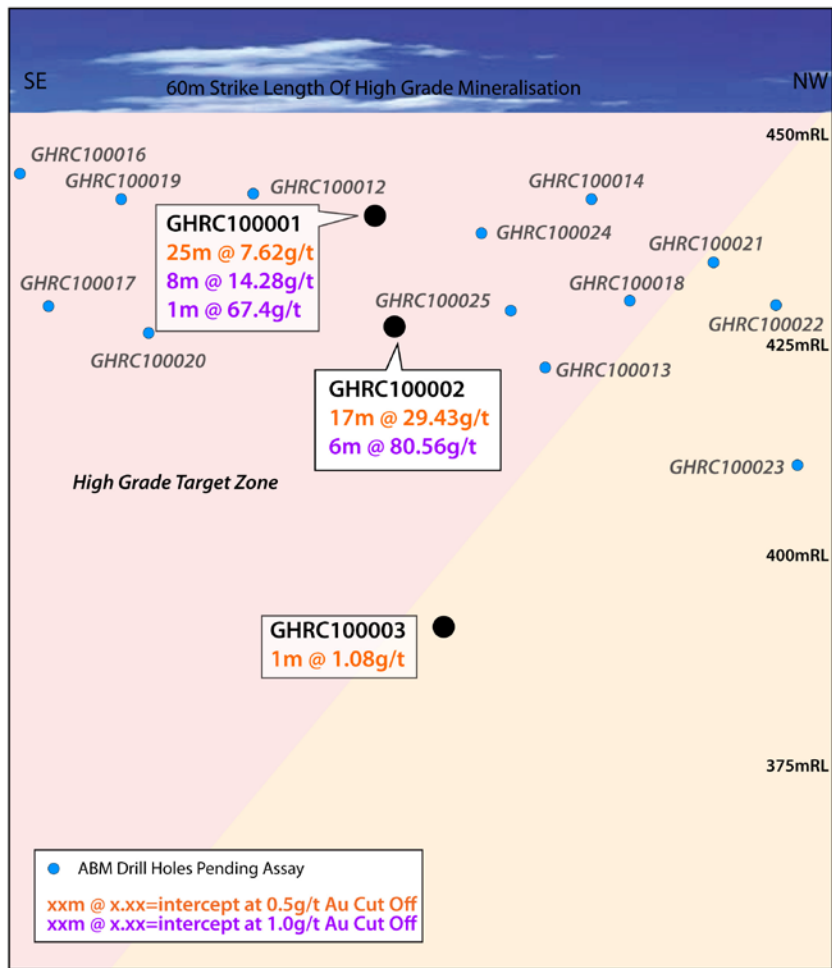


Figure 1. Long-section (view towards south west) through Golden Hind prospect showing pierce points of where drilling intersects the main gold bearing structures.

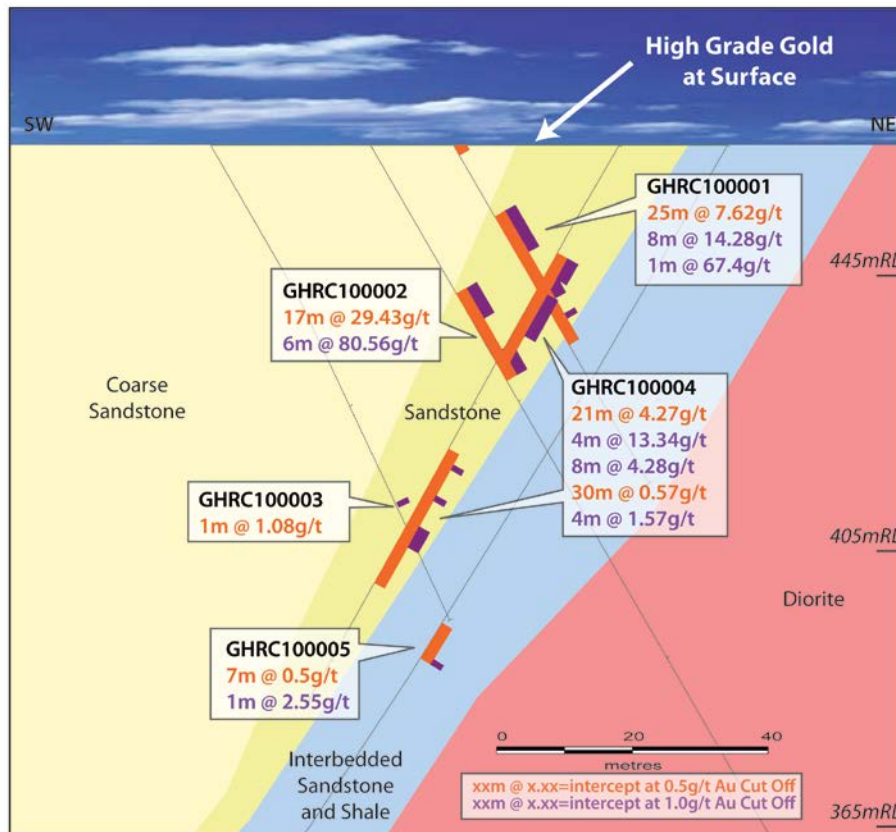


Figure 3. Cross-section through first drill results at the Golden Hind Prospect.

### About the Old Pirate High-Grade Gold Deposit

The Old Pirate Gold Deposit is a high-grade system with current resources of 427,000 ounces of gold averaging 7.95g/t gold (top cut) or 565,000 ounces averaging 10.95g/t gold (uncut) (refer appendix 3). Gold bearing quartz veins range from a few centimetres to over 4 metres in width and extend over an area approximately 800 metres by 200 metres. Quartz veins are hosted in a folded interlayered sandstone / shale sequence.

### About ABM Resources

ABM Resources is an exploration company developing several gold discoveries in the Tanami-Arunta region of the Northern Territory of Australia. The Company has a multi-tiered approach to exploration and development with a combination of high-grade potentially short-term production scenarios such as Old Pirate, large scale discoveries such as Buccaneer, and regional exploration discoveries such as the Kroda Gold Project. In addition, ABM Resources is committed to regional exploration programs throughout its extensive holdings.

ABM Resources is well capitalised to achieve its milestones in 2012 and into 2013 with \$23M in cash (as of quarterly report dated 30 June 2012).

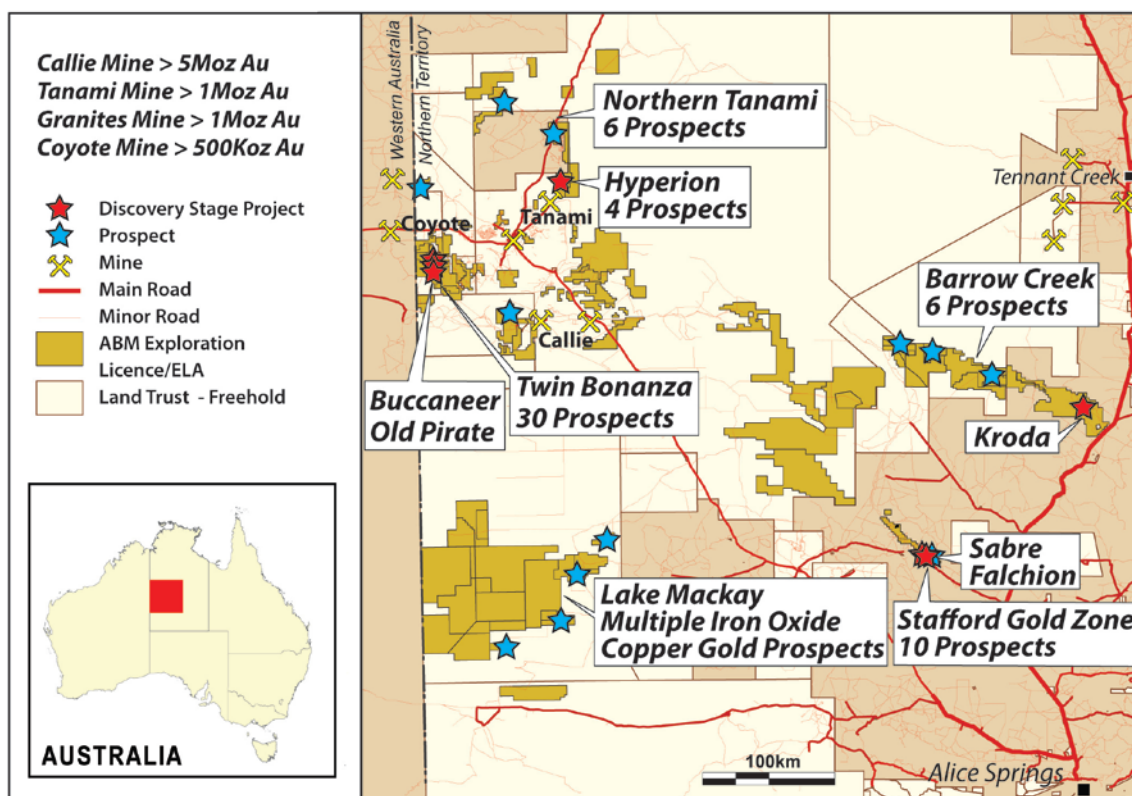


Figure 4. ABM Project Location Map Northern Territory.

Signed

Darren Holden – Managing Director

### **Competent Persons Statement**

*The information in this report that relates to Exploration Results, Mineral Resources or Ore Reserves is based on information compiled by Mr Darren Holden who is a Member of The Australasian Institute of Mining and Metallurgy. Mr Holden is a full time employee of ABM Resources NL and has sufficient experience which is relevant to the style of mineralisation and type of deposit under consideration and to the activity which he is undertaking to qualify as a Competent Person as defined in the 2004 Edition of the "Australasian Code for Reporting Exploration Results, Mineral Resources and Ore Reserves". Mr Holden consents to the inclusion in the documents of the matters based on this information in the form and context in which it appears.*

### **For Further Information Please Contact**

Jutta Zimmermann  
CFO / Company Secretary  
+61 8 9423 9777

Darren Holden  
Managing Director  
+61 8 9423 9777

Berdine Mastaglia  
Investor Relations Manager  
+61 8 9423 9777

## APPENDIX 1. Details of 2012 drill results from the Golden Hind Prospect.

Table 1.1. Significant intercepts for holes GHRC100001, GHRC100002, GHRC100003, GHRC100004 and GHRC100005 at 1.0g/t cut-off.

Hole ID	Depth From (m)	Depth To (m)	Interval (m)	Gold (g/t)	gram metres (g/t * metres)
GHRC100002	29	35	6	80.56	483.36
GHRC100001	14	22	8	14.28	114.24
GHRC100001	34	35	1	67.40	67.40
GHRC100004	21	25	4	13.34	53.36
GHRC100004	28	36	8	4.28	34.24
GHRC100002	41	46	5	3.20	16.00
GHRC100004	73	77	4	1.57	6.28
GHRC100001	27	31	4	1.37	5.48
GHRC100001	0	1	1	4.95	4.95
GHRC100002	0	1	1	3.11	3.11
GHRC100004	61	62	1	2.69	2.69
GHRC100005	100	101	1	2.55	2.55
GHRC100004	93	94	1	1.56	1.56
GHRC100004	83	84	1	1.16	1.16
GHRC100003	68	69	1	1.08	1.08
GHRC100004	55	56	1	1.12	1.12
GHRC100004	67	68	1	1.12	1.12

Significant intercepts calculated for holes GHRC100001, GHRC100002, GHRC100003, GHRC100004 and GHRC100005 at a 1.0g/t gold cut-off, minimum 1 metre width and maximum 2 metre internal dilution. Samples processed at ALS Global Laboratories in Alice Springs (NT) and Perth (WA) using Fire Assay for gold.

Table 1.2. Significant intercepts for holes GHRC100001 to GHRC100005 at 0.5g/t cut-off.

Hole ID	Depth From (m)	Depth To (m)	Interval (m)	Gold (g/t)	gram metres (g/t * metres)
GHRC100002	29	46	17	29.43	500.31
GHRC100001	14	39	25	7.62	190.50
GHRC100004	21	42	21	4.27	89.67
GHRC100004	55	85	30	0.57	17.10
GHRC100001	0	2	2	2.96	5.92
GHRC100005	94	101	7	0.50	3.50
GHRC100004	93	97	4	0.72	2.88

Significant intercepts calculated for holes GHRC100001, GHRC100002, GHRC100004 and GHRC100005 at a 0.5g/t gold cut-off, minimum 1 metre width and maximum 6 metre internal dilution. Samples processed at ALS Global Laboratories in Alice Springs (NT) and Perth (WA) using Fire Assay for gold.

Appendix 2. Drill hole details for 2012 drilling to date at the Golden Hind Prospect.

Hole ID	Prospect	Easting (m)	Northing (m)	Elevation above sea level	Inclination (degrees)	Azimuth (degrees)	Depth (metres)	Results Status
GHRC100001	Golden Hind	516766	7766931	454	-60	86.5	66	Released
GHRC100002	Golden Hind	516752	7766930	454	-60	86.5	150	Released
GHRC100003	Golden Hind	516725	7766930	454	-60	86.5	90	Released
GHRC100004	Golden Hind	516794	7766923	447	-60	266.5	108	Released
GHRC100005	Golden Hind	516812	7766920	447	-60	266.5	180	Released
GHRC100006	Golden Hind	516748	7766994	447	-60	266.5	180	Pending
GHRC100007	Golden Hind	516700	7767050	447	-60	266.5	108	Pending
GHRC100008	Golden Hind	516723	7767052	447	-60	266.5	180	Pending
GHRC100009	Golden Hind	516811	7766890	447	-60	266.5	114	Pending
GHRC100010	Golden Hind	516877	7766810	447	-60	330	282	Pending
GHRC100011	Golden Hind	516795	7766881	447	-60	86.5	90	Pending
GHRC100012	Golden Hind	516776	7766911	447	-60	86.5	90	Pending
GHRC100013	Golden Hind	516761	7766913	447	-60	86.5	156	Pending
GHRC100014	Golden Hind	516756	7766948	447	-60	86.5	90	Pending
GHRC100015	Golden Hind	516779	7766882	447	-60	86.5	180	Pending
GHRC100016	Golden Hind	516786	7766891	447	-60	86.5	90	Pending
GHRC100017	Golden Hind	516770	7766892	447	-60	86.5	180	Pending
GHRC100018	Golden Hind	516741	7766950	447	-60	86.5	150	Pending
GHRC100019	Golden Hind	516782	7766903	447	-60	86.5	90	Pending
GHRC100020	Golden Hind	516769	7766902	447	-60	86.5	150	Pending
GHRC100021	Golden Hind	516750	7766961	447	-60	86.5	90	Pending
GHRC100022	Golden Hind	516735	7766961	447	-60	86.5	150	Pending
GHRC100023	Golden Hind	516719	7766962	447	-60	86.5	150	Pending
GHRC100024	Golden Hind	516761	7766937	447	-60	86.5	90	Pending
GHRC100025	Golden Hind	516746	7766938	447	-60	86.5	150	Pending
GHRC100026	Golden Hind	516783	7766940	447	-60	266.5	120	Pending
GHRC100027	Golden Hind	516717	7767001	447	-60	86.5	90	Pending
GHRC100028	Golden Hind	516702	7767001	447	-60	86.5	180	Pending
GHRC100029	Golden Hind	516749	7767000	447	-60	86.5	180	Pending

## Appendix 3

Table 3.1 Old Pirate Resource Estimation without utilising a top-cut. Refer release dated 16/04/2012 for further details.

All Vein Models	Tonnes	Gold (g/t)	Ounces
Indicated	347,000	5.31	59,200
Inferred	1,327,000	11.86	505,800
<b>Total</b>	<b>1,673,000</b>	<b>10.50</b>	<b>565,000</b>
High-Grade Vein Models Only	Tonnes	Gold (g/t)	Ounces
Indicated	132,000	7.74	32,800
Inferred	354,000	22.64	257,600
<b>Total</b>	<b>486,000</b>	<b>18.60</b>	<b>290,400</b>

\*Note - totals may vary due to rounding.

Table 3.2 Old Pirate Resource Estimation with utilising 300g/t top-cut. Refer release dated 16/04/2012 for further details.

All Vein Models	Tonnes	Gold (g/t)	Ounces
Indicated	347,000	5.25	58,500
Inferred	1,327,000	8.65	368,900
<b>Total</b>	<b>1,673,000</b>	<b>7.95</b>	<b>427,400</b>
High-Grade Vein Models Only	Tonnes	Gold (g/t)	Ounces
Indicated	132,000	7.62	32,200
Inferred	354,000	17.52	199,400
<b>Total</b>	<b>486,000</b>	<b>14.84</b>	<b>231,600</b>

\*Note - totals may vary due to rounding.