



**Bligh Resources
Limited**
ABN 130 964 162

ASX Release
6 March 2012

Suite 804 Level 8,
84 Pitt St
Sydney
New South Wales
2000

Tel: +61 2 9233 4677
Fax: +61 2 9239 0866

Contacts:

Robert Benussi
Bill Guy

Email:

info@blighresources.com.au

For the Latest News:

www.blighresources.com.au

Directors/Officers

Robert Benussi
Charles Guy
Hanjing Xu
Peiqi Zhang
Liming Niu (Alternate
Director for Mr Xu)

Issued Capital:

Shares: 57,475,720
Unlisted Opts: 16,000,000
(Escrowed)

ASX Symbol: BGH

Currently Exploring for:

- Manganese
- Gold

Current Projects:

- Kumarina
- Bootu Creek Two
- Grenfell
- Manilla
- Leonora

Exploration Progress Report

- Leonora Geophysical Maps completed
- 514 Line Km of VTEM flown at Manilla
- Drilling at Kumarina suspended due to weather conditions

Bligh Resources Limited (Bligh) (ASX: BGH) provides this update to shareholders on its exploration progress across three of its projects – the **Leonora Gold Project, Manilla Project, and Kumarina Project**. The company has been active across the majority of its tenements and has strengthened its technical team to ensure it maintains an active and aggressive exploration program.

Leonora Gold Project

The Leonora Gold Project is divided into the Diorite King and Mount Davis prospects; both prospect areas are located 30 km north-northwest of Leonora (Attachment 1).

Geophysical interpretations of regional radiometric and magnetic data sets were considered suitable for 1:25,000 interpretation maps. This has highlighted north south to north east structures at the Diorite King area for further exploration. The areas with high potassium count are interpreted as potential high level intrusions. High level intrusions are an important part of Tarmoola style mineralisation.

The historical database, geological mapping and geological interpretation indicate that the central zone of the Diorite King Area is under-explored and that large scale geochemical program is warranted to test geological and geophysical anomalies identified.

Manilla Project

At Manilla, 514 line kilometres of Variable Time Domain Electromagnetics (VTEM) has been completed. The data from the low level helicopter VTEM survey will be processed in the coming months to determine any if electromagnetic anomalies exist within Manilla survey area.

Kumarina Project

Bligh has assessed weather conditions hampering aircore drilling at Kumarina and has determined that the program cannot proceed, the incomplete drill program will recommence when weather conditions are more stable.

Further information:

Bill Guy: 0408 345 378 - Managing Director- Exploration

Released through Ben Jarvis, Six Degrees Investor Relations: 0413 150 448

Competent Person- Charles W Guy

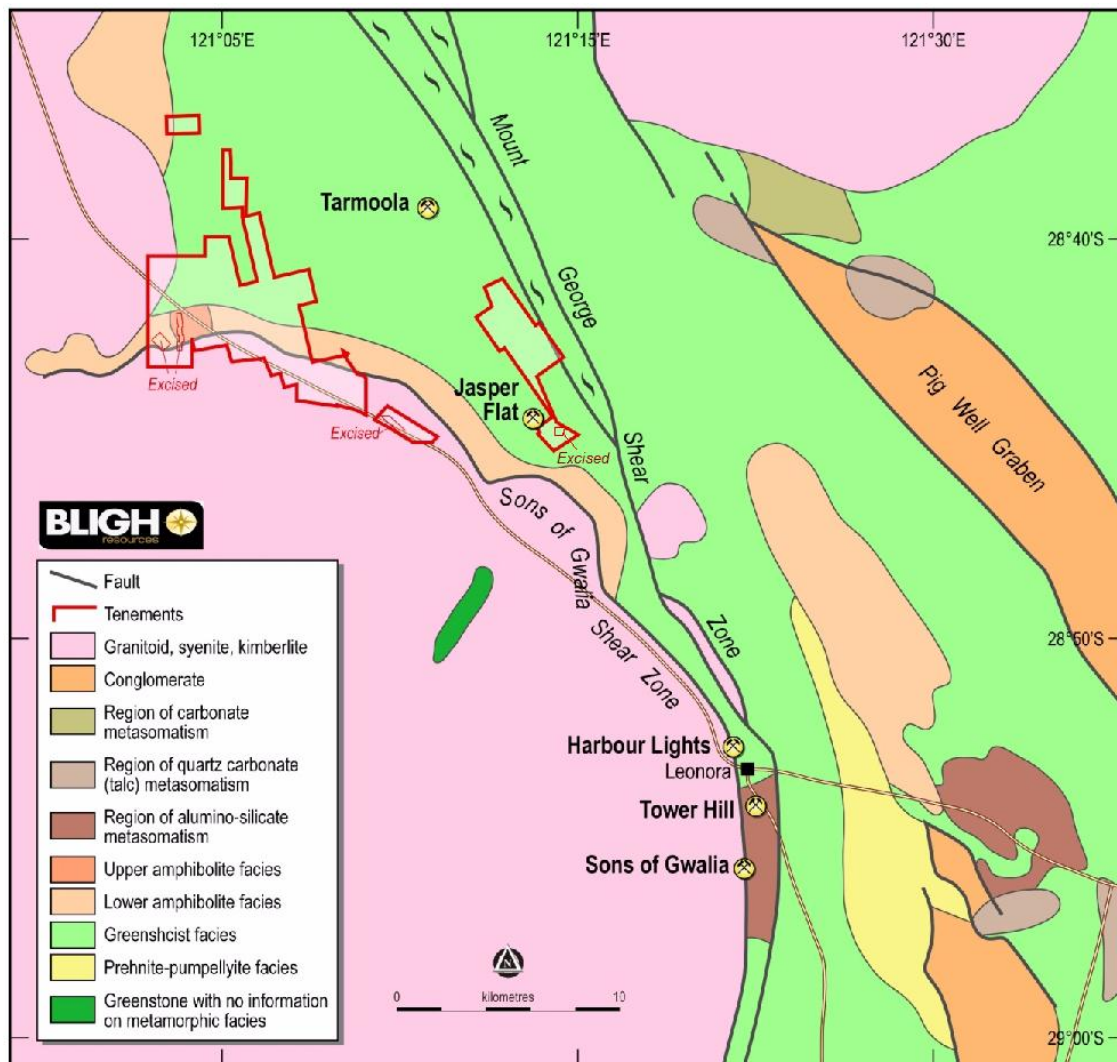
The information in this announcement that relates to Exploration Results is based on information compiled by Mr Charles William Guy who is a Member of the Australian Institute of Geoscientists. Charles William Guy has sufficient experience which is relevant to the style of mineralisation and type of deposit under consideration and to the activity that he is undertaking to qualify as a Competent Person as defined in the 2004 Edition of the 'Australasian Code for Reporting of Exploration Results, Mineral Resources and Ore Reserves'. Charles William Guy consents to the inclusion in the announcement of the matters based on his information in the form and context in which it appears. Charles William Guy is a full time employee of Bligh Resources Limited in the position of Managing Director- Exploration.



Figure 1: Aircore Rig Kumarina



Figure 2 Flooding over Kumarina tenement



Attachment 1 Location Map Leonora Gold Project

