



Mt Isa **Metals**

# Burkina Faso Gold Projects



**Gold Coast Resources  
Showcase Conference**

**13-14 June 2012**

# Important Information

## **Disclaimer**

This presentation may contain certain statements and projections provided by or on behalf of Mt Isa Metals Limited (MET) with respect to the anticipated future undertakings. These forward-looking statements reflect various assumptions by or on behalf of MET. Accordingly, these statements are subject to significant business, economic and competitive uncertainties and contingencies associated with exploration and/or mining which may be beyond the control of MET which could cause actual results or trends to differ materially, including but not limited to price fluctuations, exploration results, reserve and resource estimation, environmental risks, physical risks, legislative and regulatory changes, political risks, project delay or advancement, ability to meet funding requirements, factors relating to property title, native title and aboriginal heritage issues, dependence on key personnel, share price volatility, approvals and cost estimates. Accordingly, there can be no assurance that such statements and projections will be realised. MET makes no representations as to the accuracy or completeness of any such statement of projections or that any forecasts will be achieved.

Additionally, MET makes no representation or warranty, express or implied, in relation to, and no responsibility or liability (whether for negligence, under statute or otherwise) is or will be accepted by MET or by any of their respective officers, directors, shareholders, partners, employees, or advisers as to or in relation to the accuracy or completeness of the information, statements, opinions or matters (express or implied) arising out of, contained in or derived from this presentation or any omission from this presentation or of any other written or oral information or opinions provided now or in the future to any interested party or its advisers. In furnishing this presentation, MET undertakes no obligation to provide any additional or updated information whether as a result of new information, future events or results or otherwise.

Nothing in this material should be construed as either an offer to sell or a solicitation of an offer to buy or sell securities. It does not include all available information and should not be used in isolation as a basis to invest in Mt Isa Metals Ltd.

## **Competent Persons Statement**

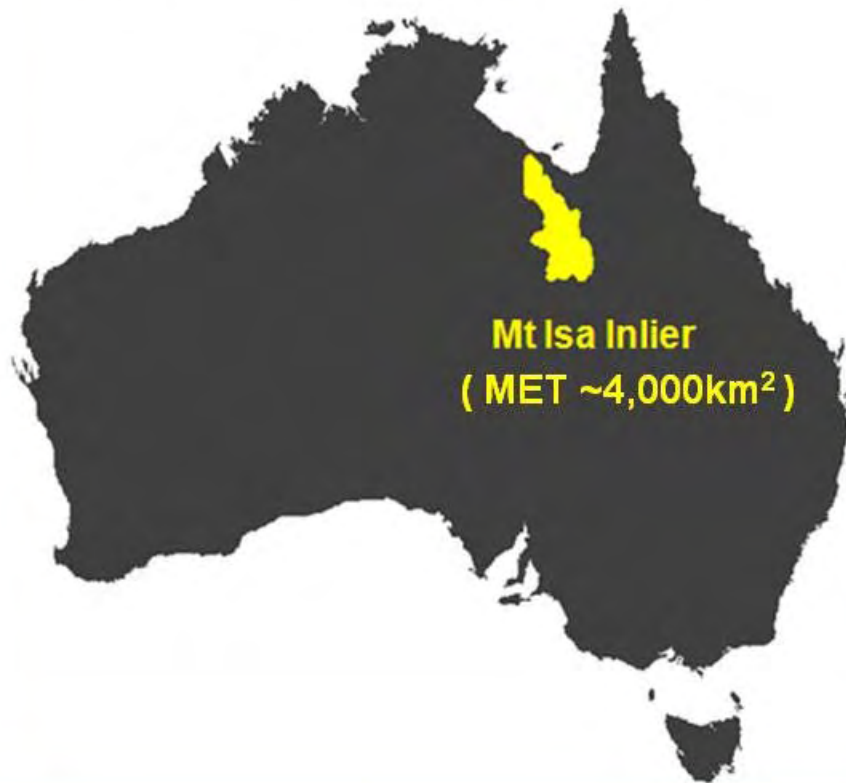
The information in this report that relates to Exploration Results is based on information compiled by Mr Peter Spiers B.Sc (Hons) Geol., who is a Member of The Australasian Institute of Mining and Metallurgy. Mr Spiers is a full time employee of the company.

Mr Spiers has sufficient experience which is relevant to the styles of mineralisation and types of deposits under consideration and to the activity which he is undertaking to qualify as a Competent Person as defined in the 2004 Edition of the 'Australasian Code for Reporting of Exploration Results, Mineral Resources and Ore Reserves'. Mr Spiers consents to the inclusion in the report of the matters based on his information in the form and context in which it appears.



# MET holds strategic land positions in two world-class mineral provinces ...

## Mount Isa - Copper



## West African - Gold



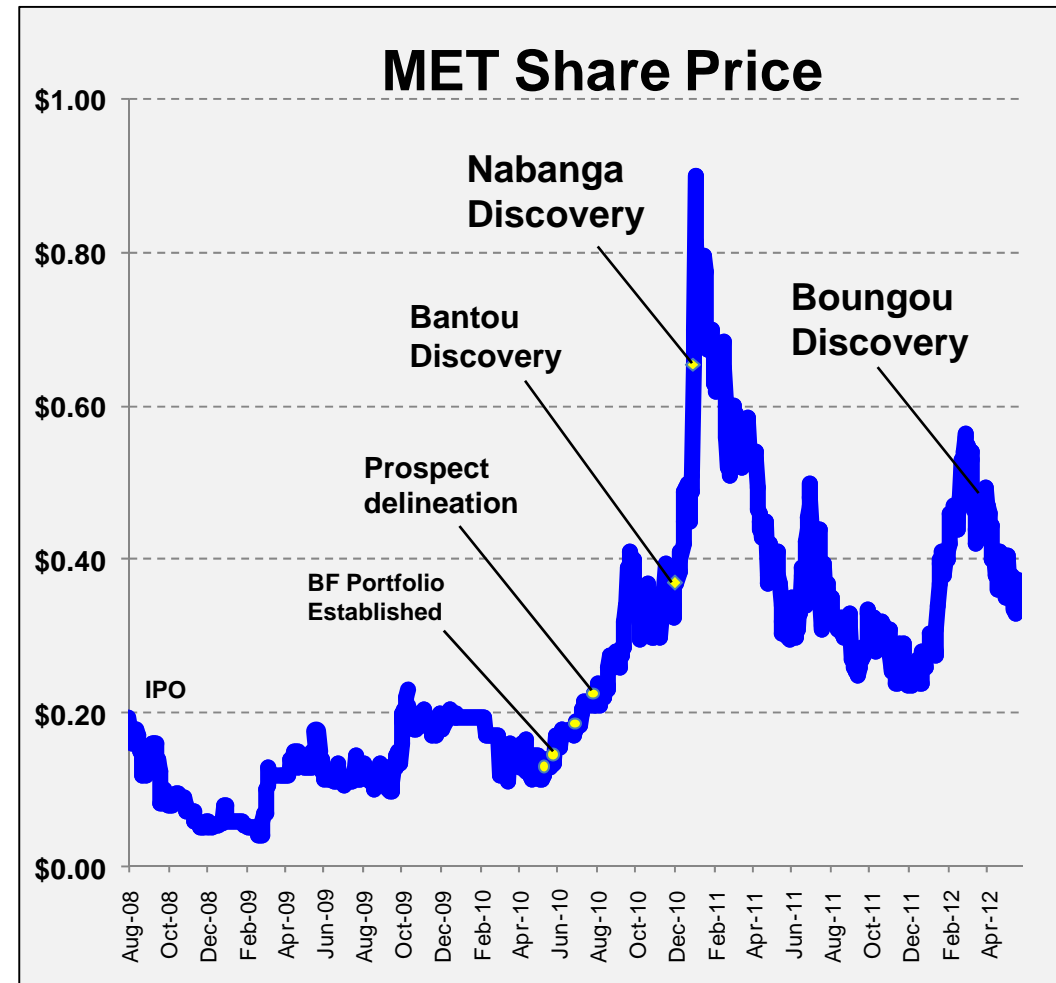
... our focus is gold exploration in West Africa



# Shareholder / Financial Overview

ASX Code:	MET
Shares (ordinary):	167.0m
Options (unlisted):	10.0m
Share Price:	37.5 cents <sup>(1)</sup>
Market Capitalisation:	A\$63m
Cash:	A\$9.1m <sup>(2)</sup>
Major shareholders:	
- DGR Global Limited	30%
- National Nominees	7%
- Tenstar Trading Ltd	6%

} rounded



(1) As at 8<sup>th</sup> June 2012

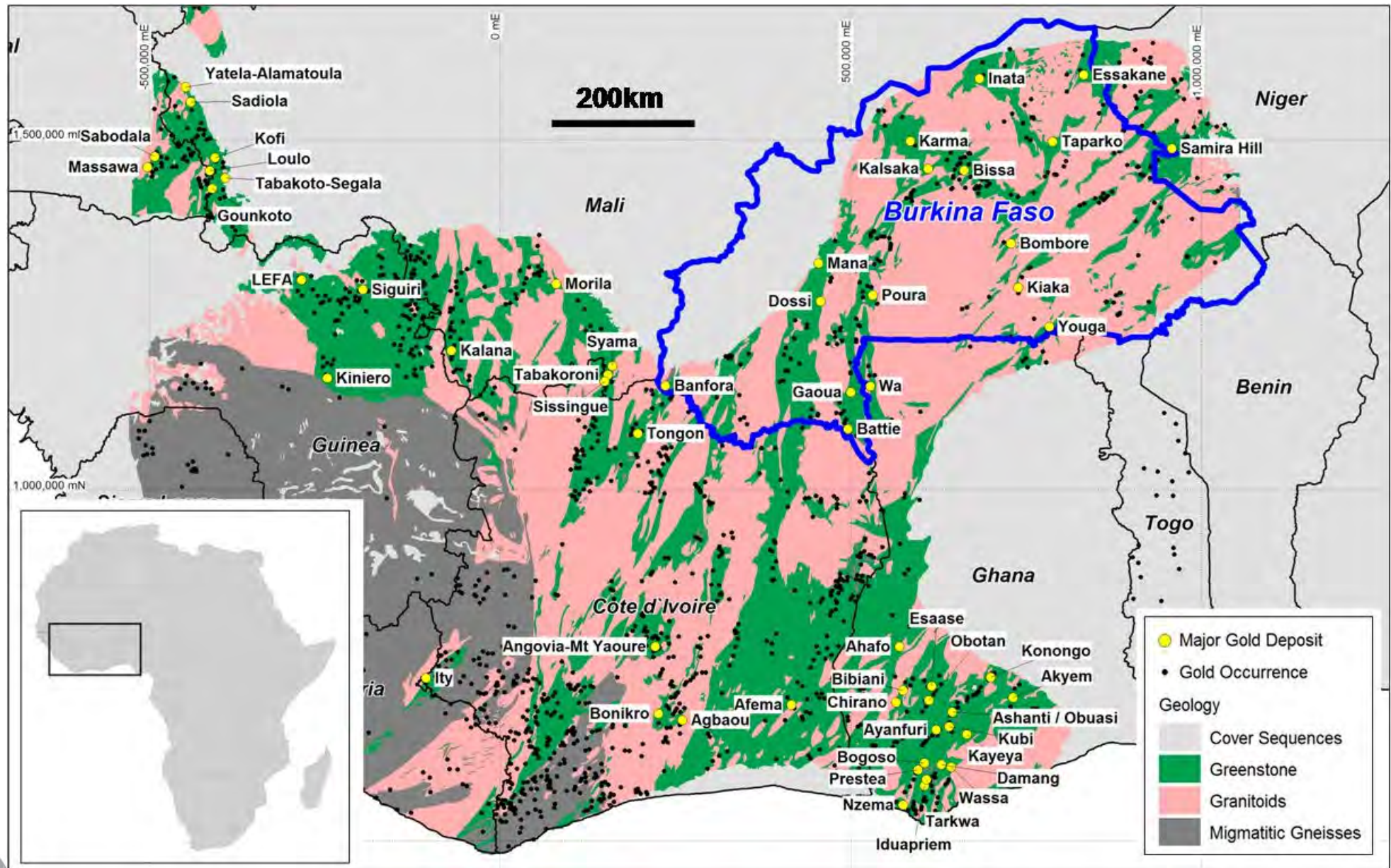
(2) As at 31<sup>st</sup> March 2012 (unaudited)





# West Africa – A World Class Gold Province

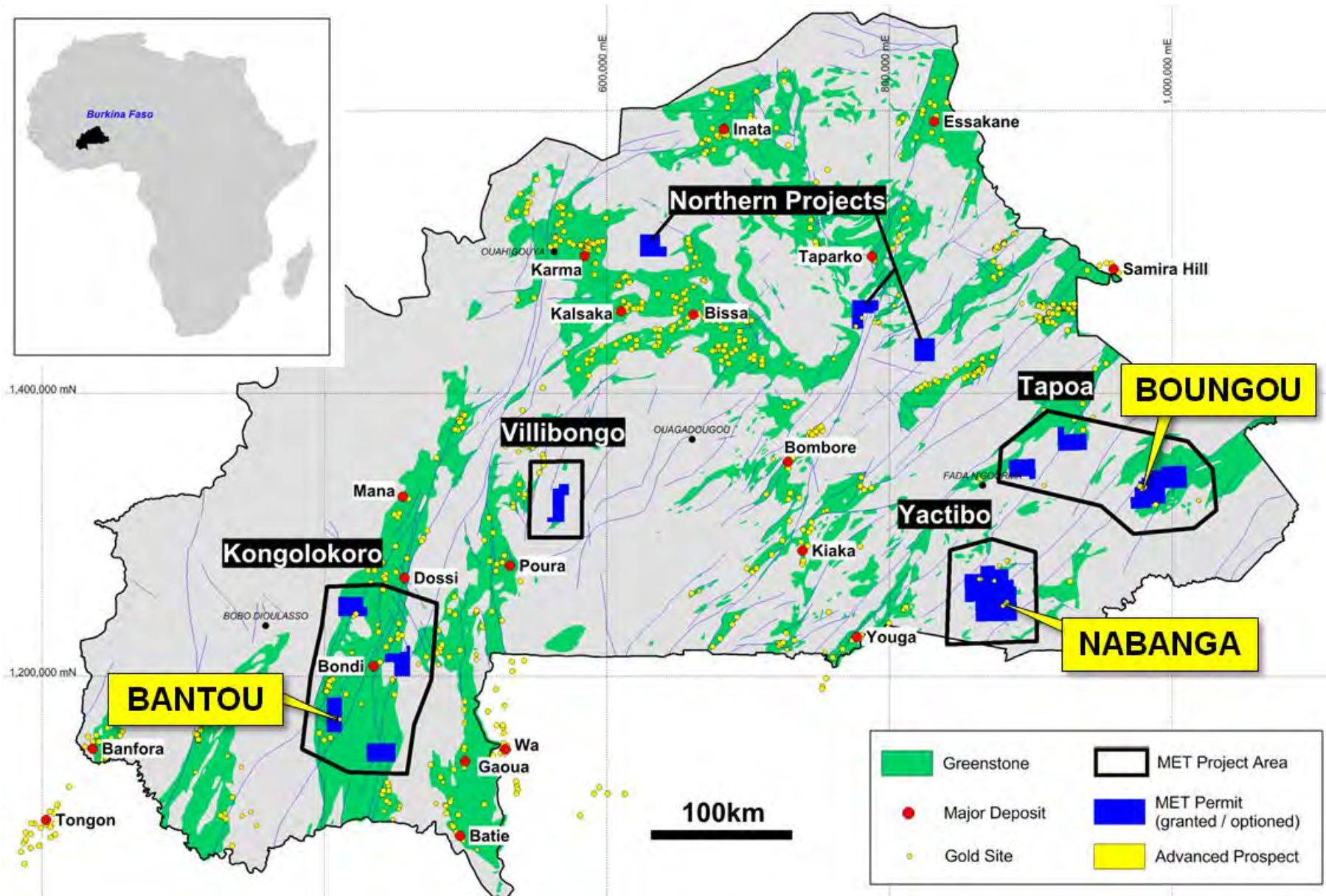
( Host to more than fifty +1Moz gold deposits – MET's projects are in Burkina Faso )





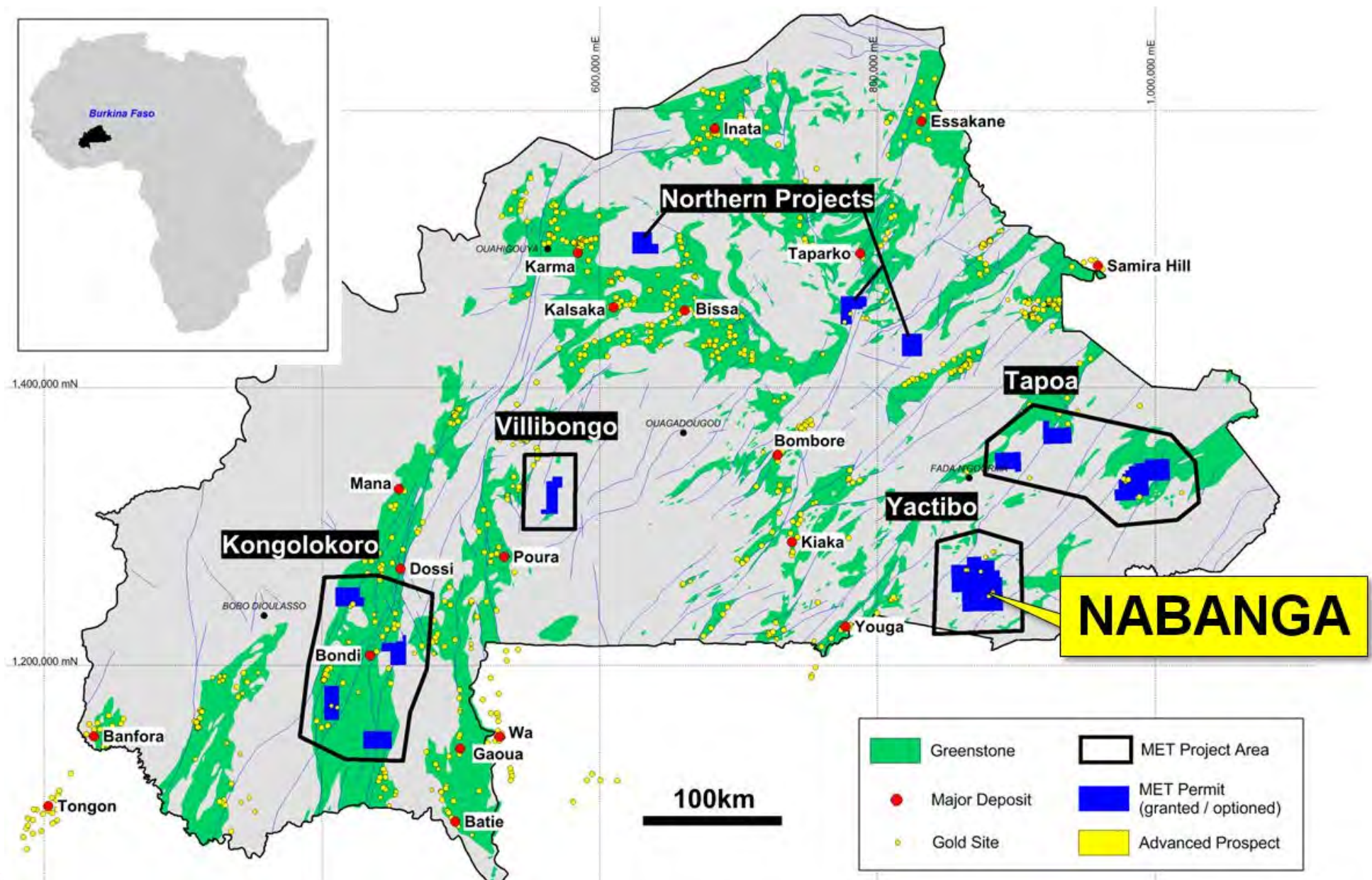
# MET Exploration Permits - Burkina Faso

( ~4,000km<sup>2</sup> permit area\* – Multiple advanced gold prospects)



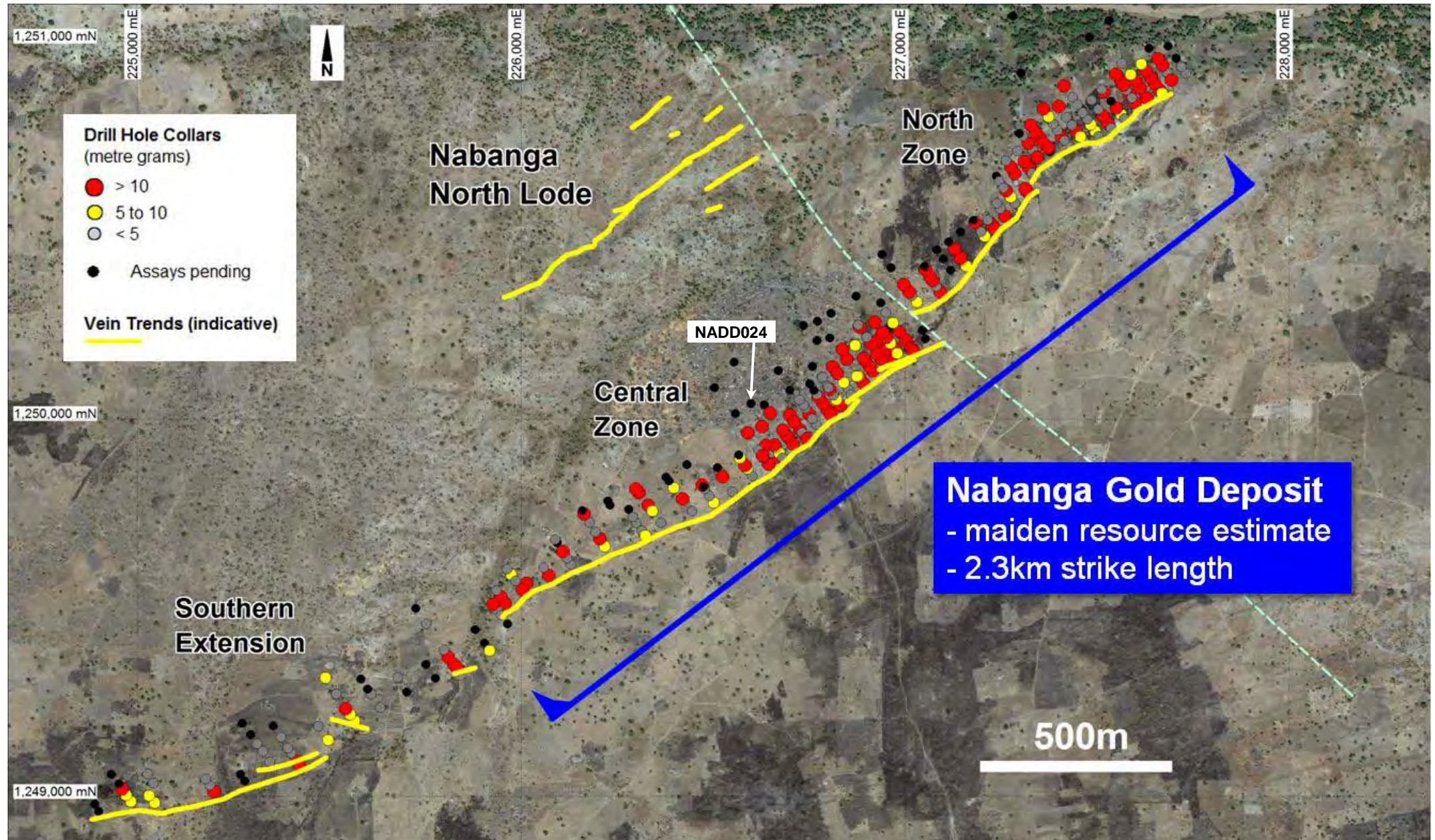


# Nabanga – High Grade Gold Discovery



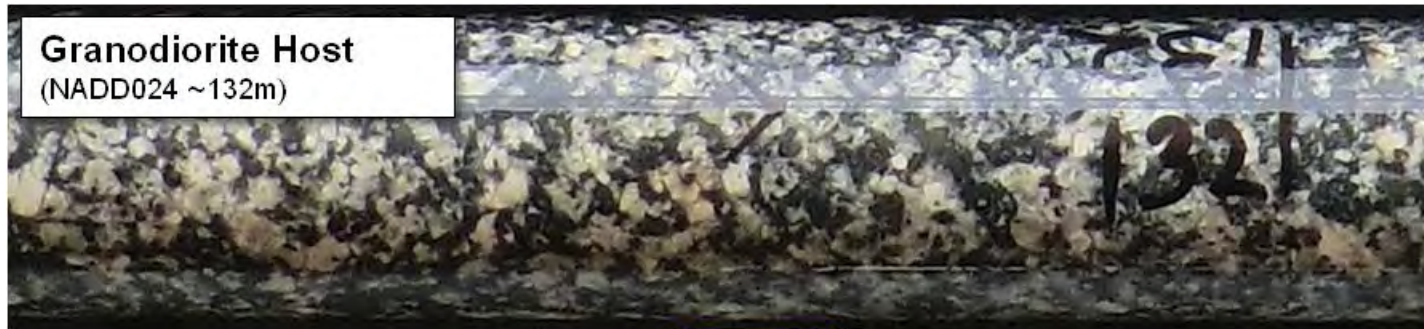


# Nabanga Gold Deposit – Drill Status Plan





# Nabanga – A High Grade Gold System



Hole ID	Intersections*	From (m)
NARC091	2m @ 19.00g/t	24
NARC100	3m @ 20.49g/t	72
NARC114	10m @ 17.70g/t	51
NARC135	5m @ 22.99g/t	74
NARC139	3m @ 20.77g/t	33
NARC151	3m @ 20.12g/t	110
NARC172	6m @ 14.44g/t	49
NARC173	6m @ 48.48g/t	74
NARC174	5m @ 26.34g/t	87
NARC190	3m @ 23.46g/t	105
NARC199	4m @ 17.25g/t	28
NARC216	8m @ 12.68g/t	148
NARC218	5m @ 15.62g/t	112
NARC254	6m @ 11.21g/t	145
NARC293	7m @ 17.29g/t	169
NARC300	11m @ 10.52g/t	114
NARC319	3m @ 22.65g/t	78
NARC323	8m @ 18.13g/t	116
NARC327	3m @ 34.75g/t	172

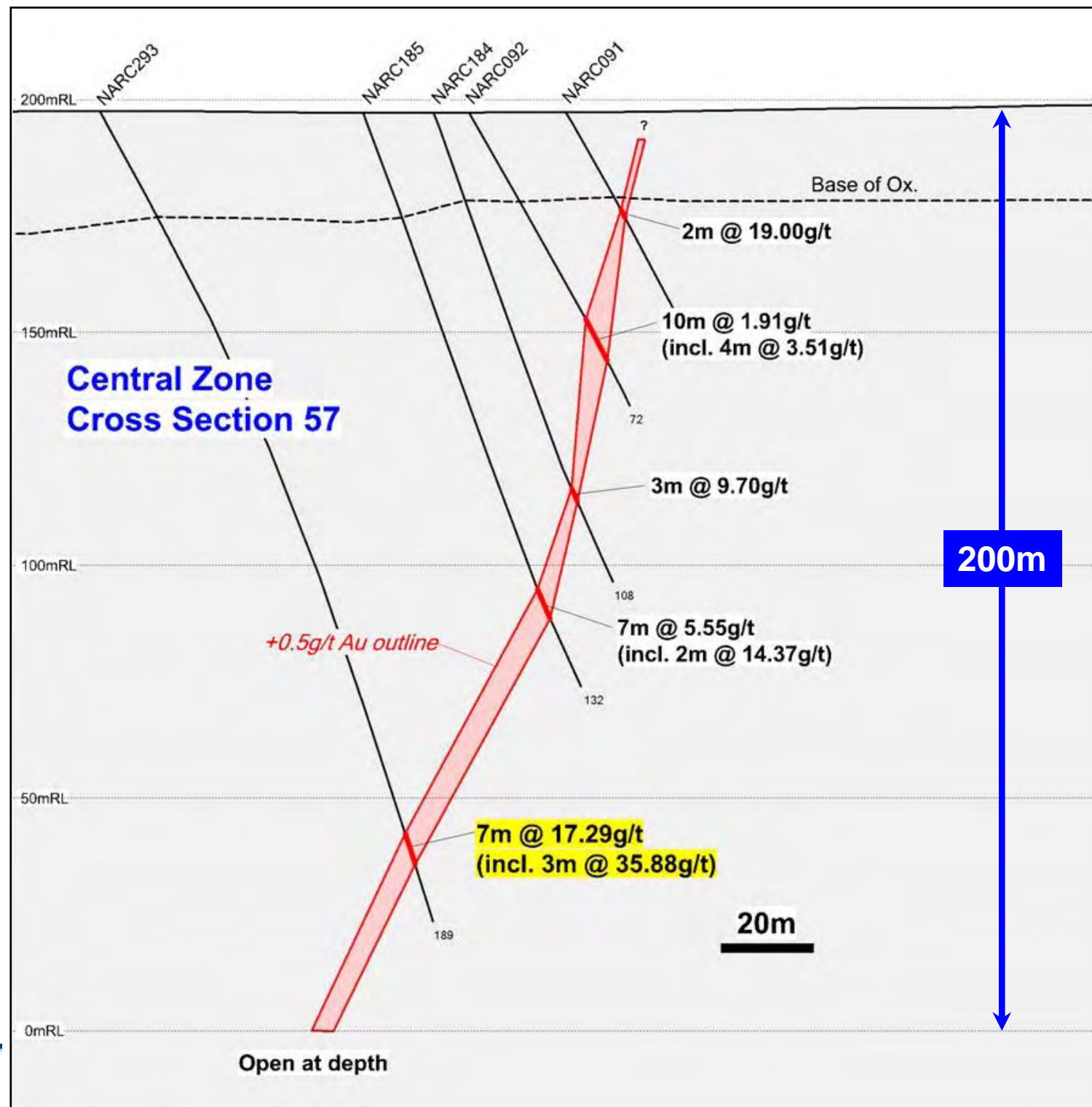
\* Selection of high grade RC drill intersections reported from Nabanga Project during 2012.

Note – assays are awaited for recently completed diamond drilling program.



# Nabanga (Section 57)

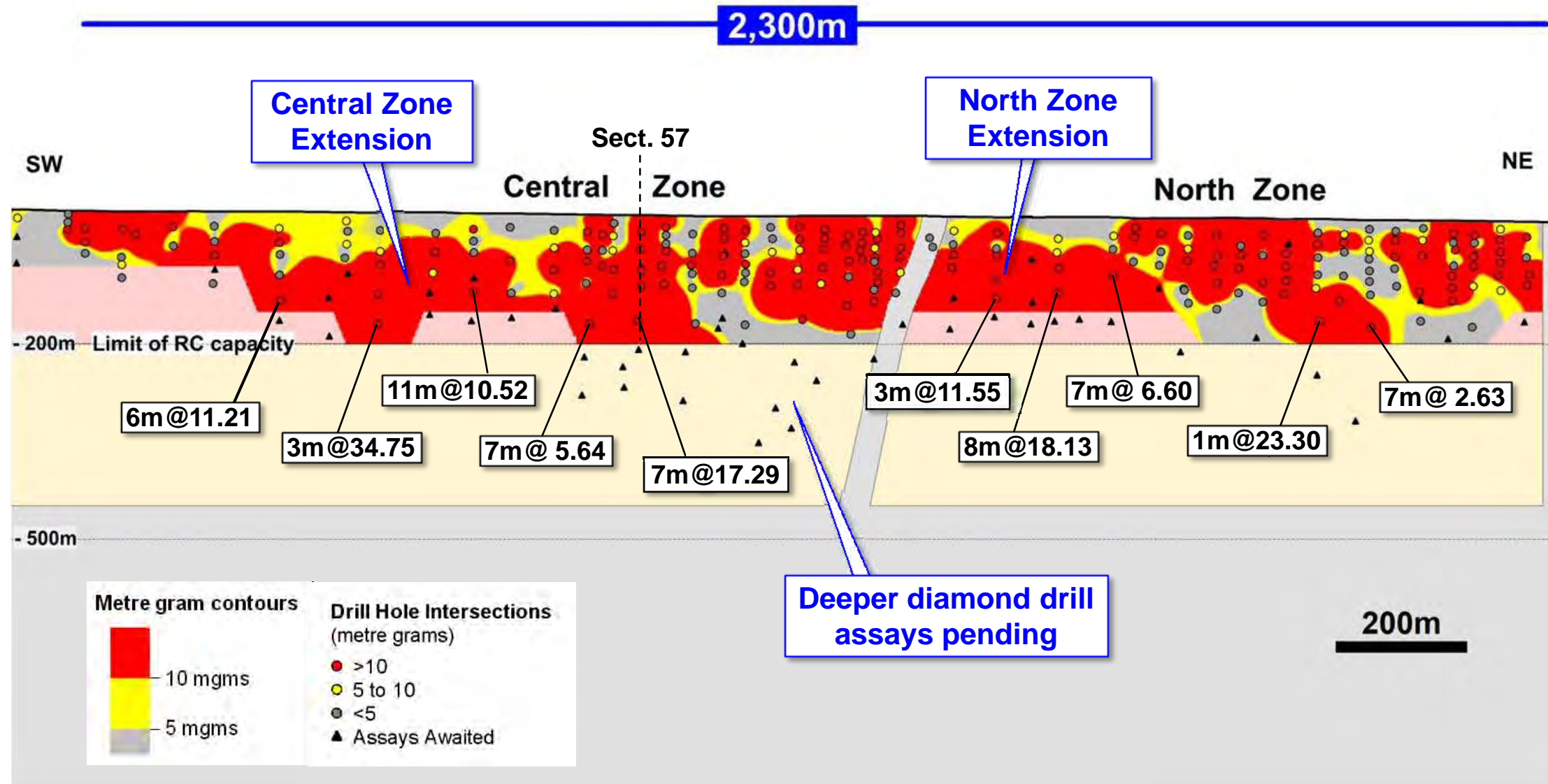
- high grade gold mineralisation to 200m depth
- good continuity of structure
- open at depth below deepest RC drill holes



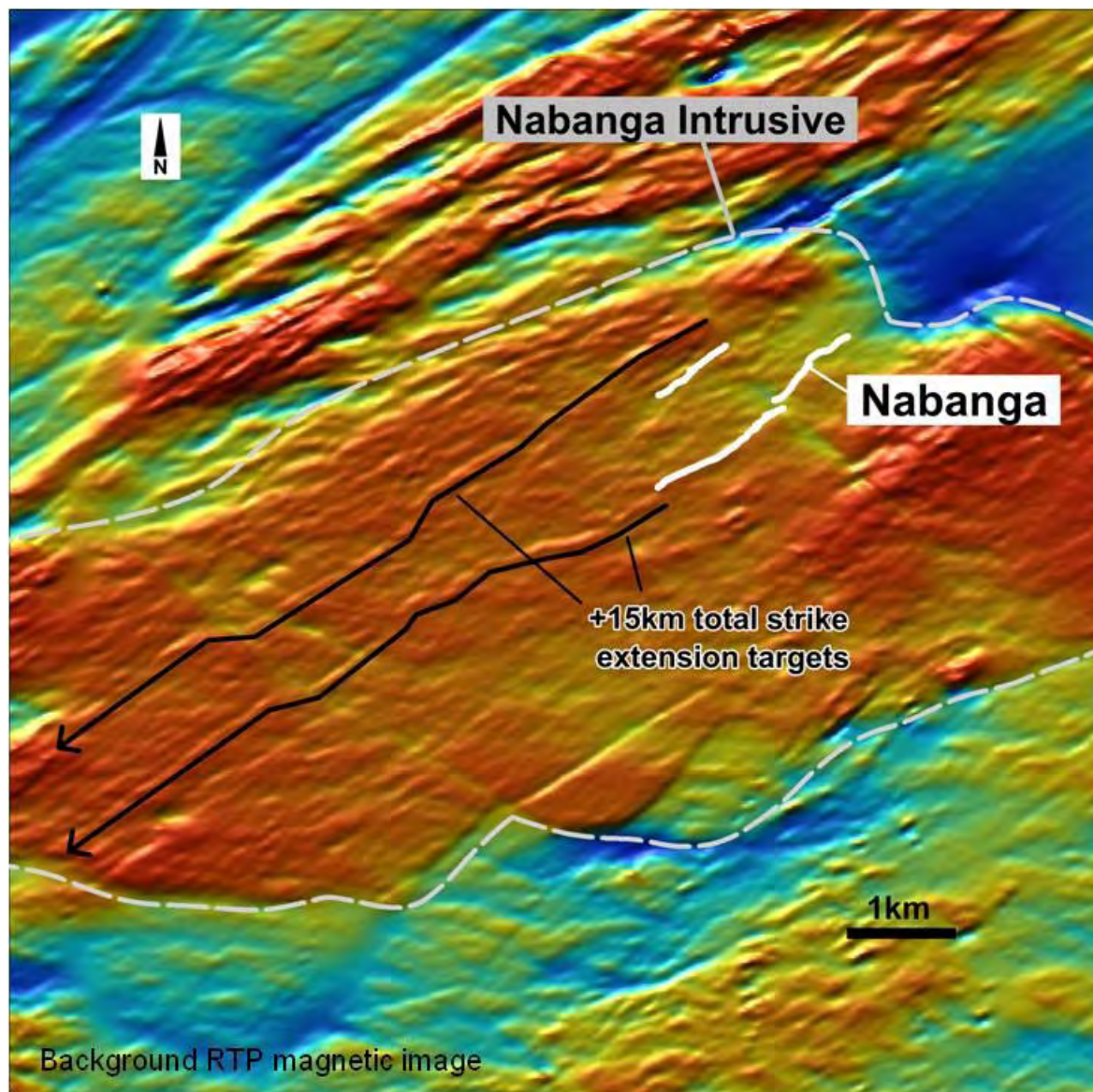


# Nabanga - Longitudinal Section

- Significant new high grade intersections at base of current drilling



# Nabanga – Forward Plan

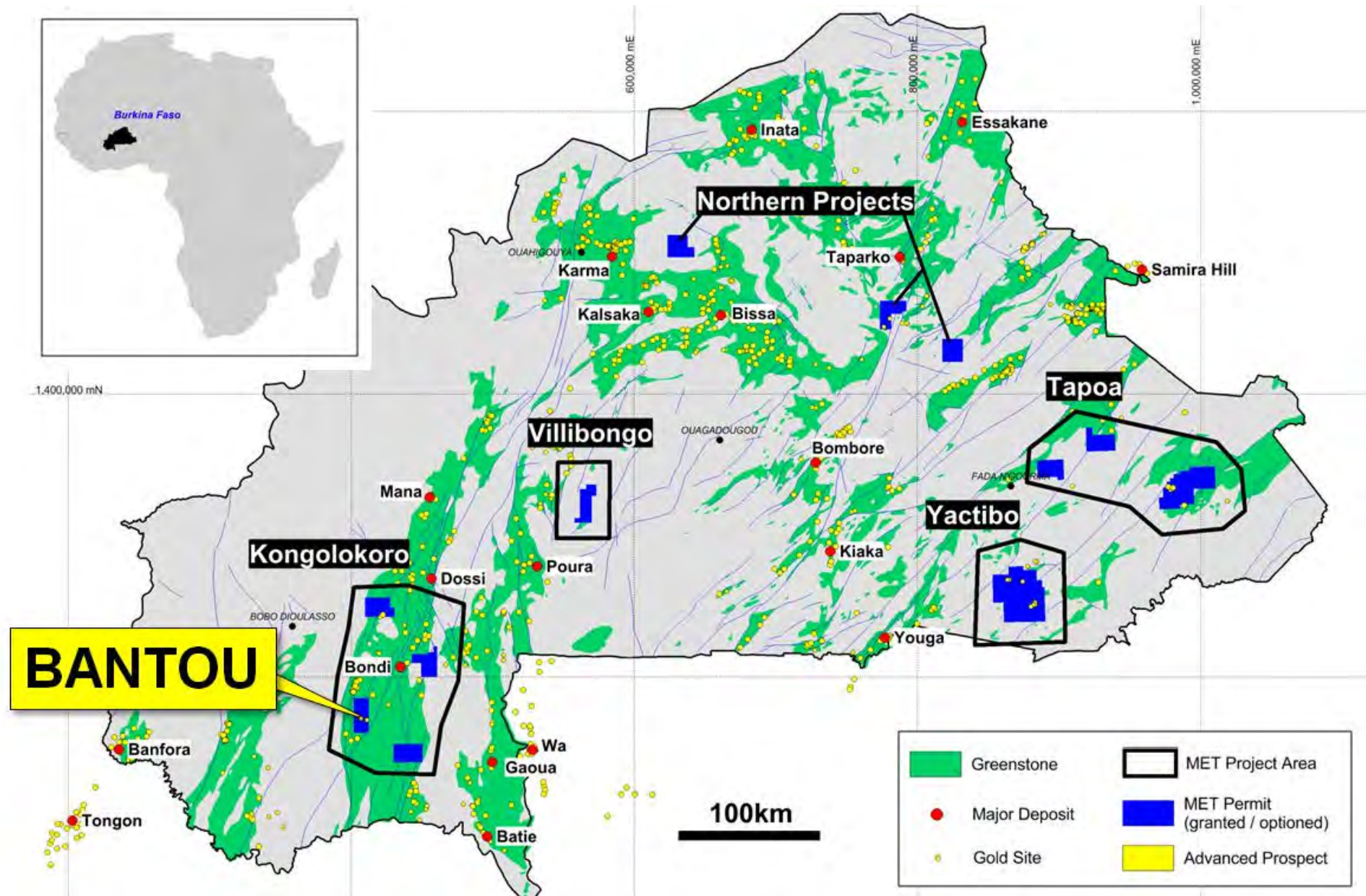


- Maiden resource estimate in progress (2.3km long x up to 200m deep)
- Further RC and diamond drill assays awaited
- Open pit scoping study (Lycopodium)
- Additional drilling to target doubling of the depth extent
- Strike potential and camp-scale targets





# Bantou – Our Second Gold Discovery





# Bantou – Multiple Quartz Lodes Over a 1km Strike Length





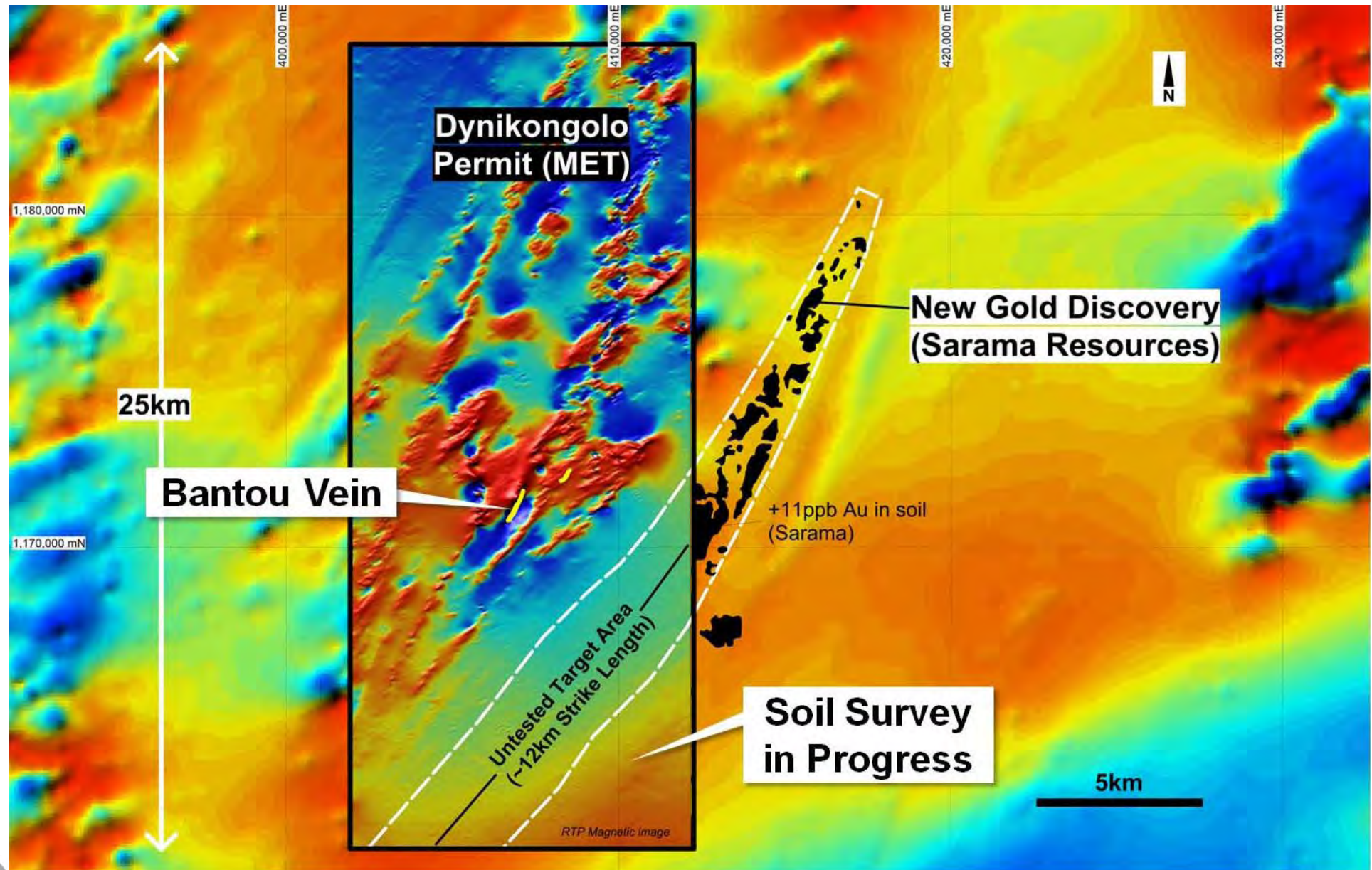
( Multiple structures defined / strike extensions to be tested / resource estimate pending )





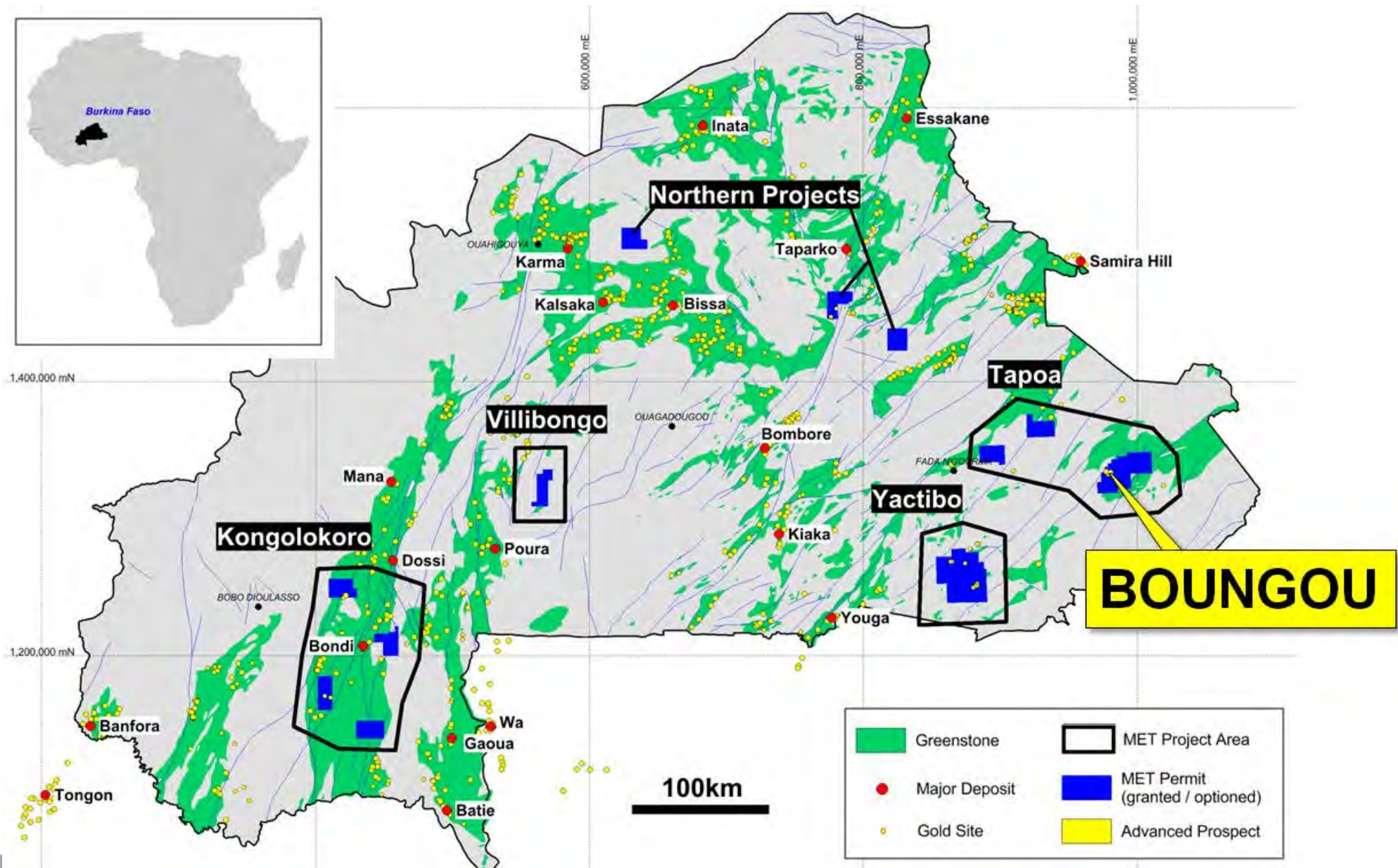
# Bantou – New Regional Gold Targets

( Structural targets defined in MET geophysics / new 3<sup>rd</sup> party gold discovery on adjacent permit )





# Boungou – MET's 3<sup>rd</sup> Gold Discovery





# Boungou – New Gold “Rush” (Feb. 2012)

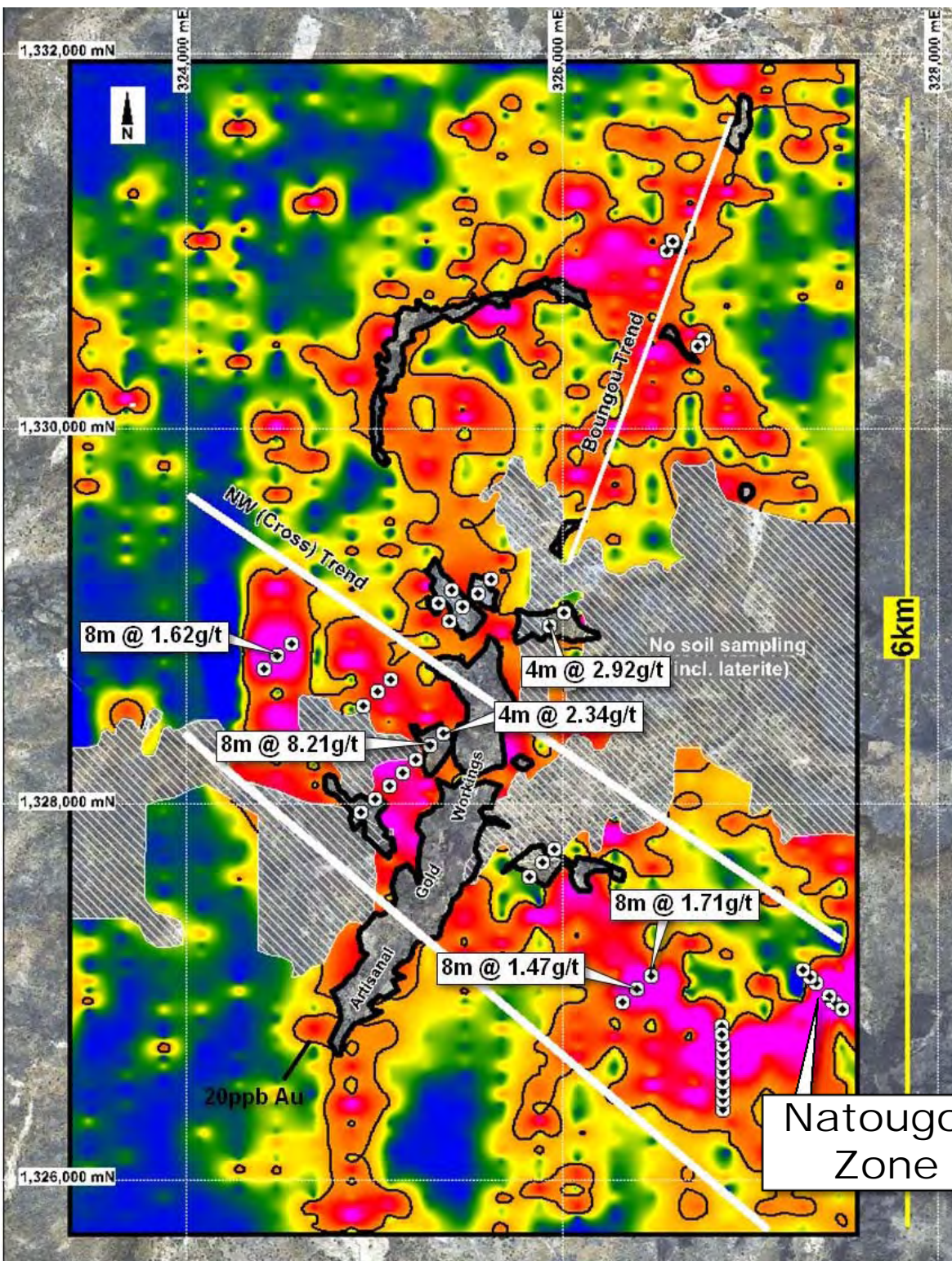




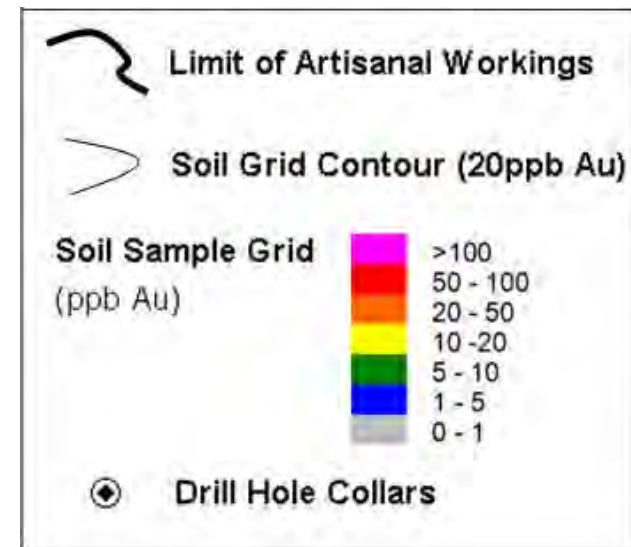
# Boungou Prospect

- extensive gold in soil anomalism
- 6.6km x up to 3.7km max. width (@20ppb Au)
- multiple gold trends
- anomalism open in all directions
- includes significant zones of +50ppb gold

## Natougou Zone New Gold Discovery



Natougou  
Zone

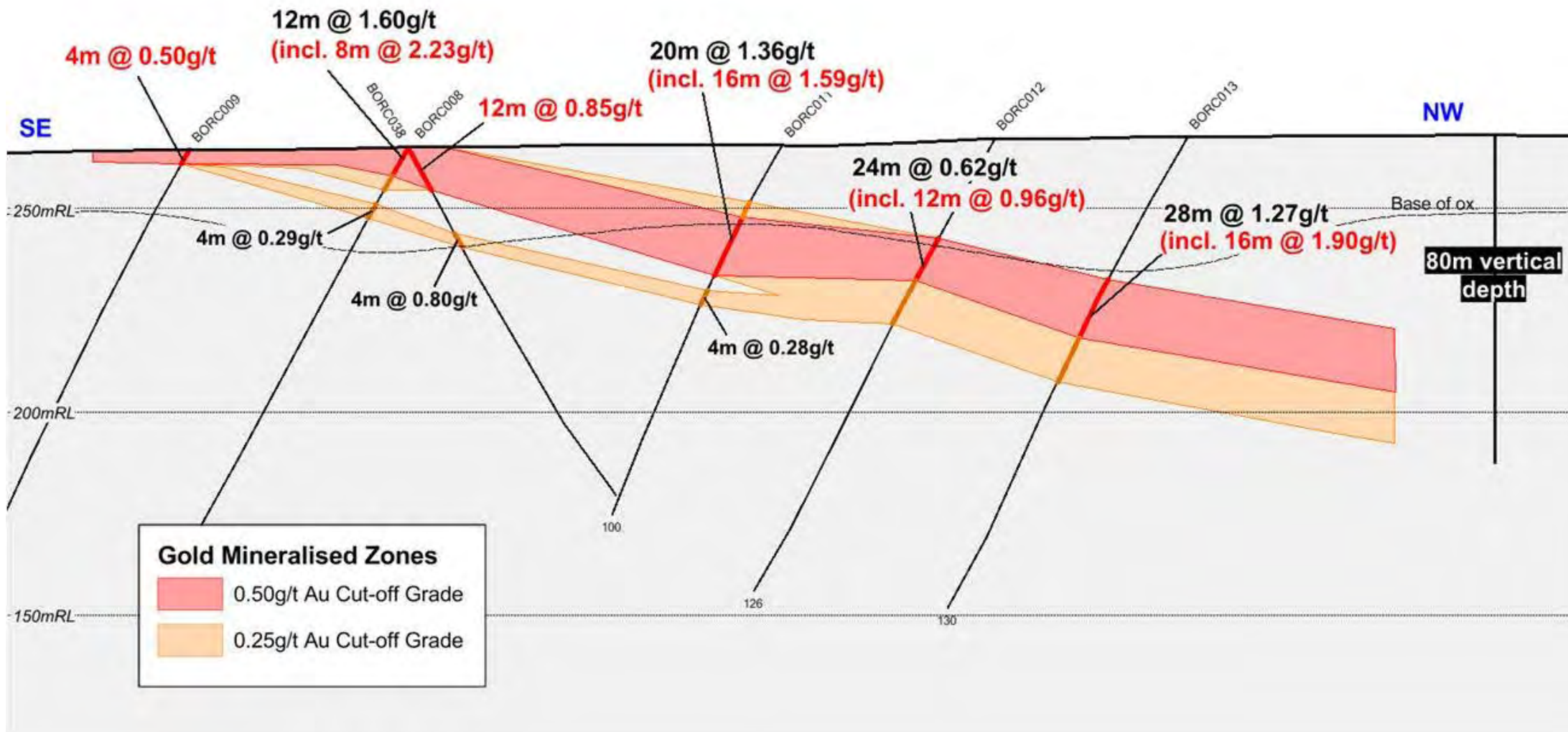




# Natougou Discovery Cross Section

( +0.5g/t gold mineralisation intersected from surface / shallow 10° dip / open at depth )

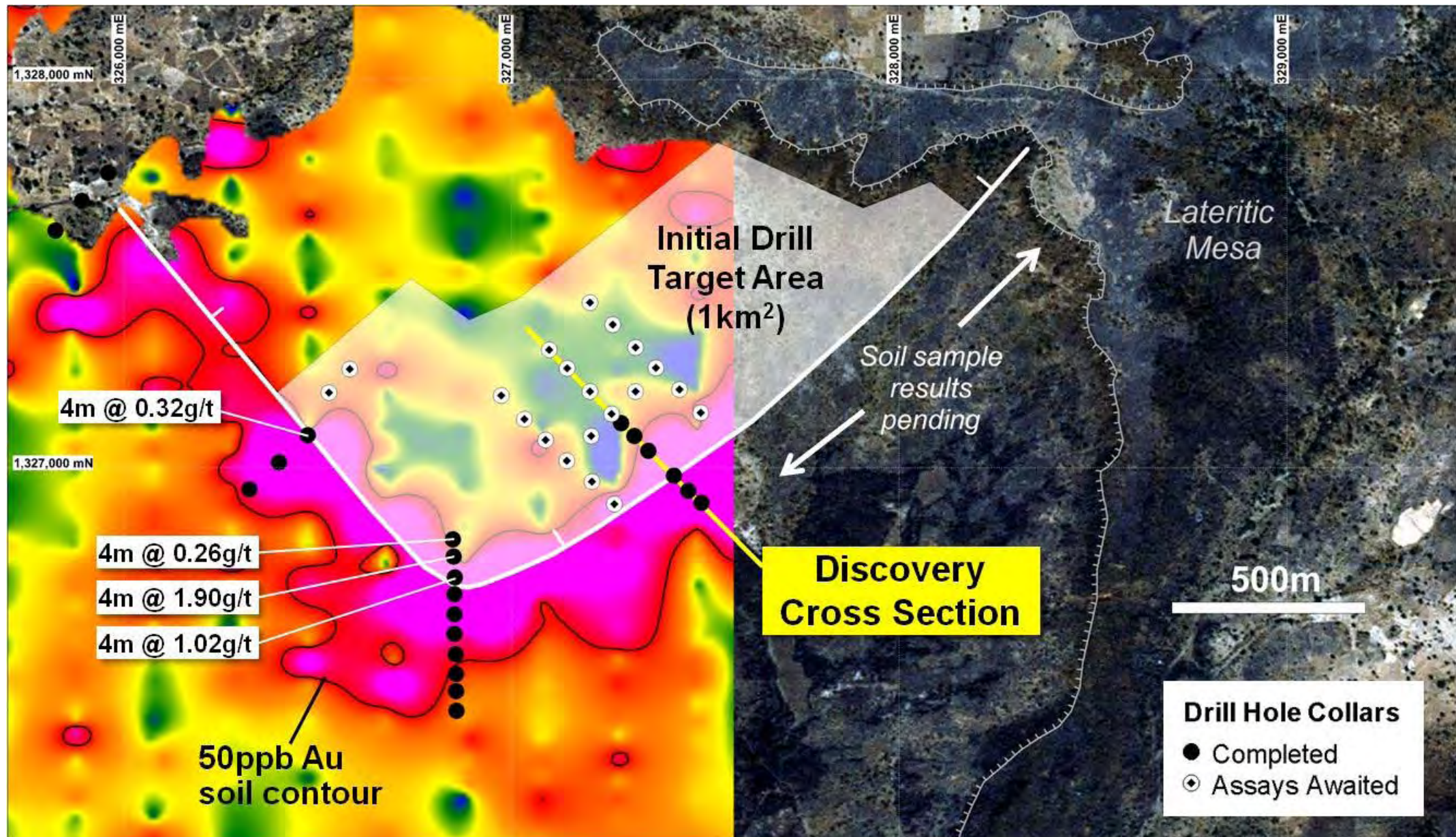
300m





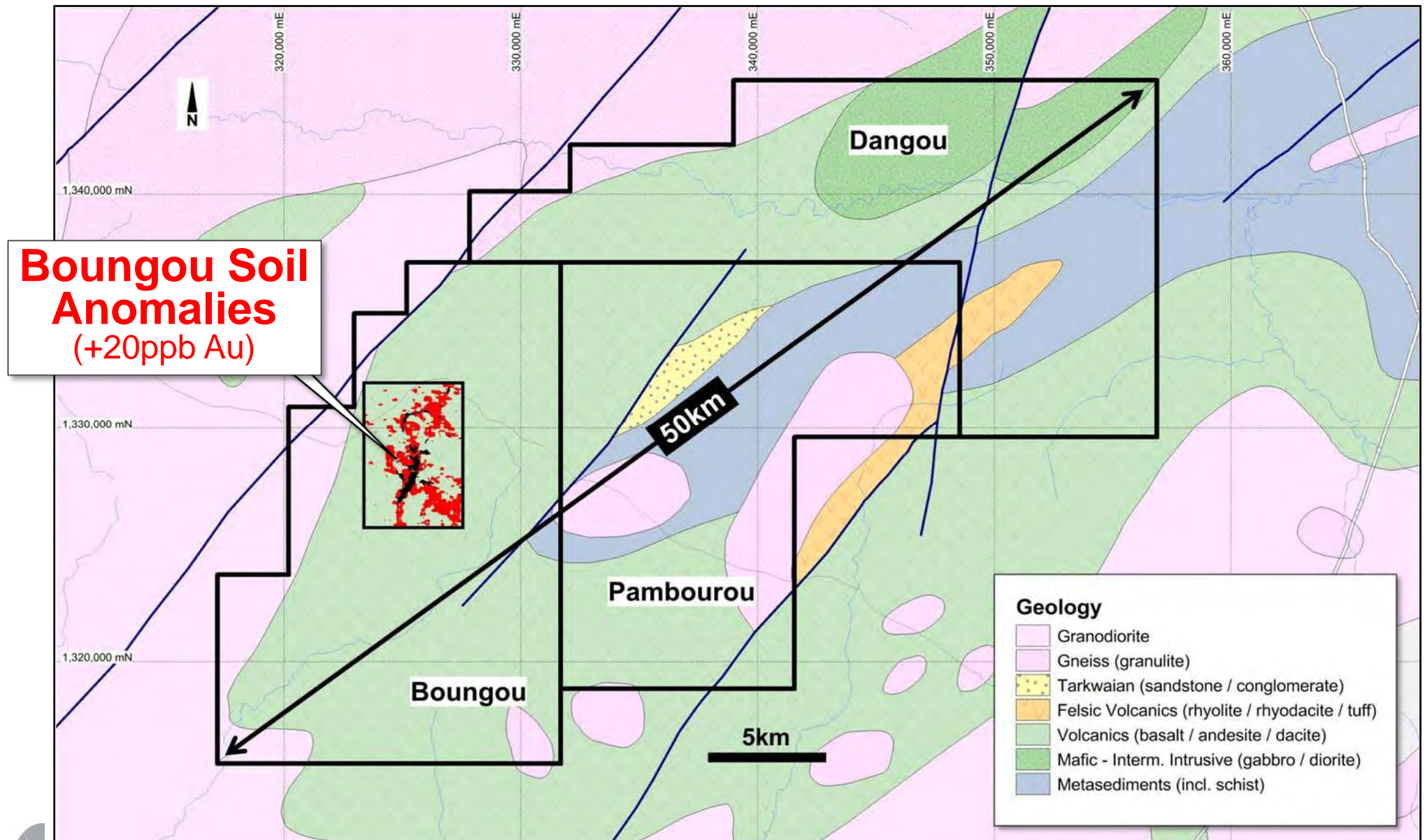
# Natougou – Phase 2 Drill Assays Pending

( Phase 2 RC drilling targeting down dip and strike extensions of discovery cross section )





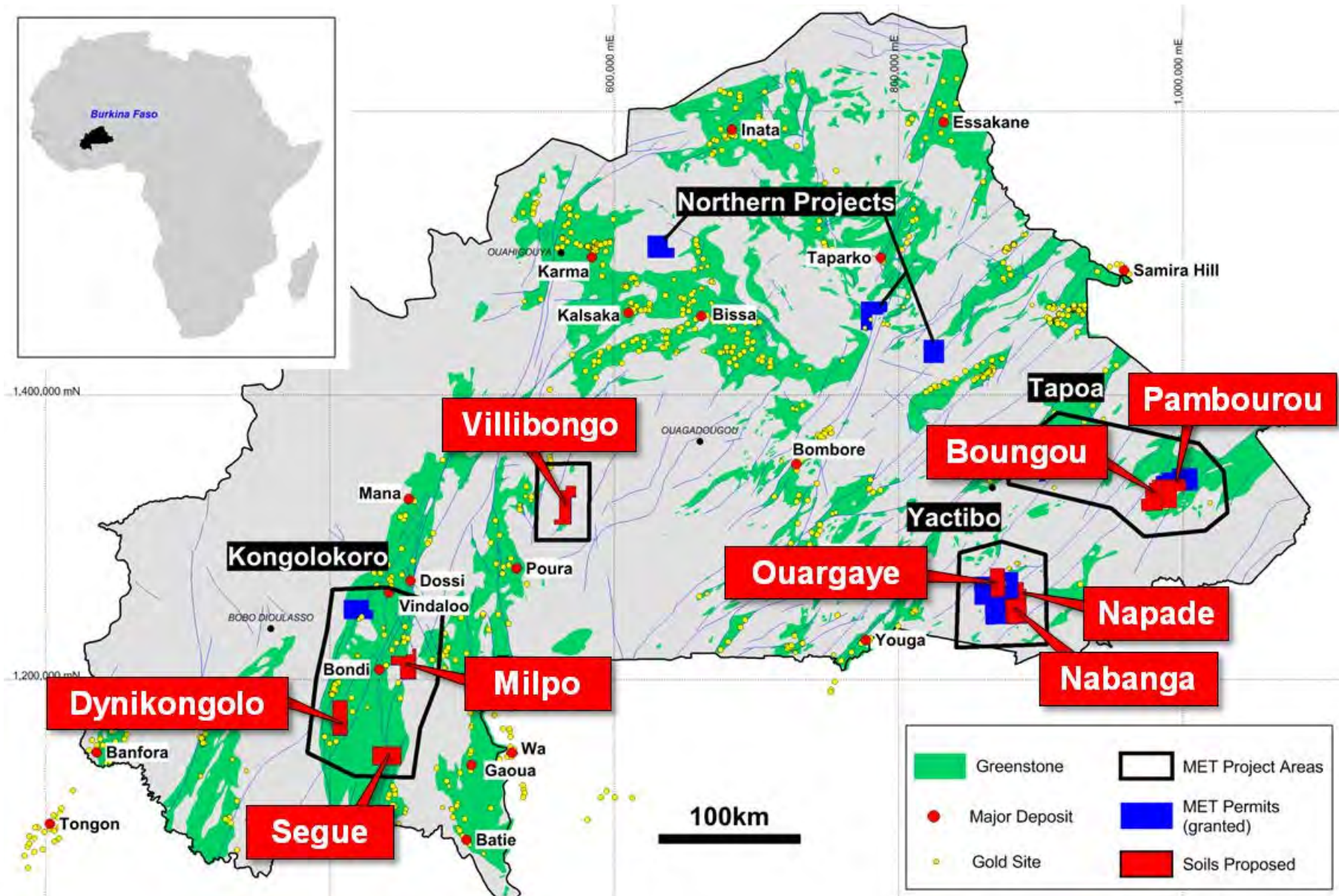
# Boungou - Less than 5% of Broader Project Area Tested to Date





# Regional Soil Sampling Programs

( Soil sampling of 9 permits underway to ensure a pipeline of new targets )



# Investment Summary

- Deep project portfolio in a world-class gold province
- Multiple prospects with demonstrated potential for major gold discoveries
- Three gold discoveries in the first 18 months:

**Nabanga**      - maiden resource estimate  
                    - open pit scoping study  
                    - significant depth potential

**Boungou**     - new discovery announced April 2012  
                    - phase 2 drilling assays awaited

**Bantou**        - strike/depth extension drilling proposed  
                    - maiden resource estimate

... and a pipeline of new targets from regional exploration







# Mt Isa Metals

## Contact

**Peter Spiers**  
**Managing Director**  
**+61 (0) 7 3198 3040**  
**+61 (0) 409 407 265**  
**[pspiers@mtisametals.com.au](mailto:pspiers@mtisametals.com.au)**  
**[www.mtisametals.com.au](http://www.mtisametals.com.au)**