

9 May 2012

www.intgold.com.au

DRILLING COMMENCES AT ANA DISCOVERY, BRAZIL

Highlights

- RC drilling commences on 6,000m follow-up program targeting;
 - resource delineation on defined quartz veins hosting high grade gold mineralisation and,
 - Porphyry targets within extensive Au-Cu surface anomalism.
- Ana Prospect diamond drill results received on final four holes returning extensive gold anomalism in pervasive hydrothermal alteration.
- Final surface geochemistry results further extend >100ppb zone of anomalism to over 2.5km x 4km target area.
- Additional rock chip results with 17.4g/t and 4.5 g/t Au on newly identified vein structure in follow-up mapping of Ana Prospect

International Goldfields Limited (ASX: IGS) ("IGS" or "the Company") is a gold exploration company focused on organic growth of gold resources in emerging mining districts of Brazil, Mali, Ivory Coast and Western Australia.

In Brazil, RC drilling commences this week on the recently reported discovery at the Ana Prospect hosted within the prospective Juruena Belt. The 6,000m program will focus on two objectives. The first is to extend and deepen the mineralised zone that recently returned **21m at 5.9g/t Au, including 8m at 13.6g/t (ANA008) and 18m at 3.24g/t Au (ANA006)** 120 metres along strike. The second objective will be a series of scout holes, testing for porphyry style mineralisation and additional high grade vein mineralisation within the 2.5km by 4km gold anomaly defined in surface sampling with targets refined by copper and molybdenum anomalism.

The final assay results for the diamond program returned encouraging results for a large scale mineralising system at Ana. Drilling confirmed significant widths of anomalous gold-copper mineralisation is on multiple parallel structures at the Ana prospect over more than 600m to the northwest of the vein hosted high grade gold intercepts. The disseminated style mineralisation in drill holes ANA004 and ANA005 is associated with strong lithologic complexity with intermediate to mafic dykes intruding the felsic to intermediate porphyry rocks. The zones of lithologic complexity are host to extensive widths of anomalous gold values (>0.1g/t Au) and copper anomalism.

BOARD

Tony Sage
Chairman

Bernard Aylward
Non-Executive Director
& Technical Advisor

Paul Kelly
Non-Executive Director

MANAGEMENT

Pip Leverington
Company Secretary

Travis Schwertfeger
Chief Executive Officer

REGISTERED OFFICE AND PRINCIPLE PLACE OF BUSINESS

18 Oxford Close
Leederville WA 6007

POSTAL ADDRESS

PO Box 306
West Perth WA 6872

COMMUNICATION DETAILS

Telephone: +61 8 9211 0635
Facsimile: +61 8 9322 2631

Web Address:
www.intgold.com.au
Email Address:
info@intgold.com.au

AUSTRALIAN BUSINESS NUMBER

69 099 544 680

SHARE REGISTRY

Advanced Share
Registry Services Pty Ltd
110 Stirling Hwy
Nedlands WA 6009

MEDIA CONTACT

David Tasker
PPR

T: 08 9388 0944/ 0433 112 936
E: david.tasker@ppr.com.au

ASX CODE
IGS

ANA PROSPECT

Drill hole ANA002 is host to pervasive intense alteration associated with porphyry host rocks of variable composition, where a brittle tectonic structure returned **0.3m at 1.3g/t Au** from 17.7m high in the hole. The final 65m of ANA002 intersected gold anomalism including 10m at 0.35g/t Au from 44m depth, 4m at 0.67g/t Au from 81m depth and scattered >0.1g/t Au anomalism continues to bottom of hole at 108.2m total depth. Drill holes ANA003 and ANA004 intersected similar scattered gold anomalism in pervasive alteration, with better intercepts in these drill holes of **1m at 2.72g/t Au** and **2m at 0.94g/t Au** respectively. The pervasive alteration and extensive gold anomalism in the drilling is indicative of a large volume of mineralising fluid in a significant mineralising system that warrants further drill testing.

Additional RC drilling will follow-up these diamond holes to the northeast: following high grade surface gold results proximal to drilling; and also further along the trend of the mineralisation, where surface geochemistry suggests a potential source to the mafic to intermediate intrusions associated with extensive gold anomalism that occupies the multiple northeast trending structures intersected in recent drilling. These structures hosting the lithological complexity at Ana are a primary control to the pervasive alteration zones and high grade gold in rock chips at surface.

The 93% IGS-owned Latin Gold Project holds 3,000km² of licences containing multiple targets for epithermal and porphyry style gold-copper mineralisation. Surface geochemistry programs across the project area continue concurrently with the RC drilling programme to advance targeting on existing prospects and identify new targets across the vast land holdings.

Surface Geochemistry

Final results for the 1,427 sample sites on the 26km² surface sampling campaign at Ana expand the footprint of gold anomalism exceeding 100ppb Au **to a 2.5km x 4.5km area..**

Additional rock chip sampling results received, include **17.4g/t Au** and **4.5 g/t Au** from prospect pits located on a structure exploited by surface workings, however the depth-projection of the mineralised structure is not tested in drilling. Surface sampling and mapping now extend over 1km to the north and to the east of the drilled area, with results pending for additional surface rock chip sampling results collected to target additional drilling on the prospect.

Ends

FOR FURTHER INFORMATION, PLEASE CONTACT:

International Goldfields

Travis Schwertfeger

T: +61 8 9221 7729

E: tschwertfeger@intgold.com.au

Tony Sage

T: +61 8 9380 9555

Professional Public Relations

David Tasker

T: +61 8 9388 0944

M: +61 433 112 936

E: david.tasker@ppr.com.au

About International Goldfields

International Goldfields is an active exploration company focused on organic growth of gold resources with excellent projects strategically located in some of the most exciting emerging gold mineralised districts in the world – the Birimian of West Africa, the Juruena belt of Brazil and the Tropicana belt of Western Australia. We have the funding and the projects to ensure an active exploration program all year round and will be maintaining a strong, positive news flow for investors.

Competent person statement

The information in this report that relates to exploration results is based on information compiled by Mr Travis Schwertfeger. Mr Schwertfeger is the Chief Executive Officer of International Goldfields Limited. Mr Schwertfeger is a member of The Australian Institute of Geoscientists and has sufficient experience which is relevant to the style of mineralisation and type of deposit under consideration and to the activity which he is undertaking to qualify as a Competent Person as defined in the 2004 Edition of the 'Australasian Code for Reporting of Exploration Results, Mineral Resources and Ore Reserves'. Mr Schwertfeger consents to the inclusion in the report of the matters based on information in the form and context in which it appears.

Hole ID	Easting	Northing	From (m)	To (m)	Interval (m)	Au (g/t)	Cu (percent)
ANA Prospect							
ANA002	761345	8837880	17.7	18	0.3	1.3	
ANA003	761391	8837813	70	71	1	2.72	
ANA004	761433	8837907	32	34	2	0.94	
¹ ANA006	761626	8837464	19.8	24	4.2	0.46	0.31%
¹ ANA006			33	51	18.0	3.24	0.16%
including			33	42	9.0	3.35	0.24%
¹ ANA006			60	60.45	0.45	3.17	
¹ ANA007	761661	8837411	36	42	6.0	5.18	0.68%
¹ ANA007			66	67	1.0	0.11	0.23%
¹ ANA008	761702	8837399	45	66	21.0	5.88	0.12%
including			50	58	8.0	13.6	
including			51	53	2.0	25.4	0.49%
including			58	60	2.0	1.88	0.41%

Table 1: Significant Intercepts in recent drilling, Latin Gold Project, Brazil

TECHNICAL NOTES:

Samples assayed are ½ NQ2 diamond core cut at the Company's core yard at Peixoto des Azevedo

Assay results by Fire Assay method. All assay numbers are reported as un-cut and all intercepts reported as drill thickness and are not to be interpreted as true thickness unless otherwise indicated.

Gold intersections are based on a 0.9 g/t gold lower cut-off, no upper-cut applied and maximum 3m internal dilution.

Copper intersections are based on a 0.1% Cu lower cut-off, no upper-cut applied and maximum 2m internal dilution

Grid coordinates are SAD69 UTM zone 21S

FOOTNOTES

1. Previously Reported Intercepts

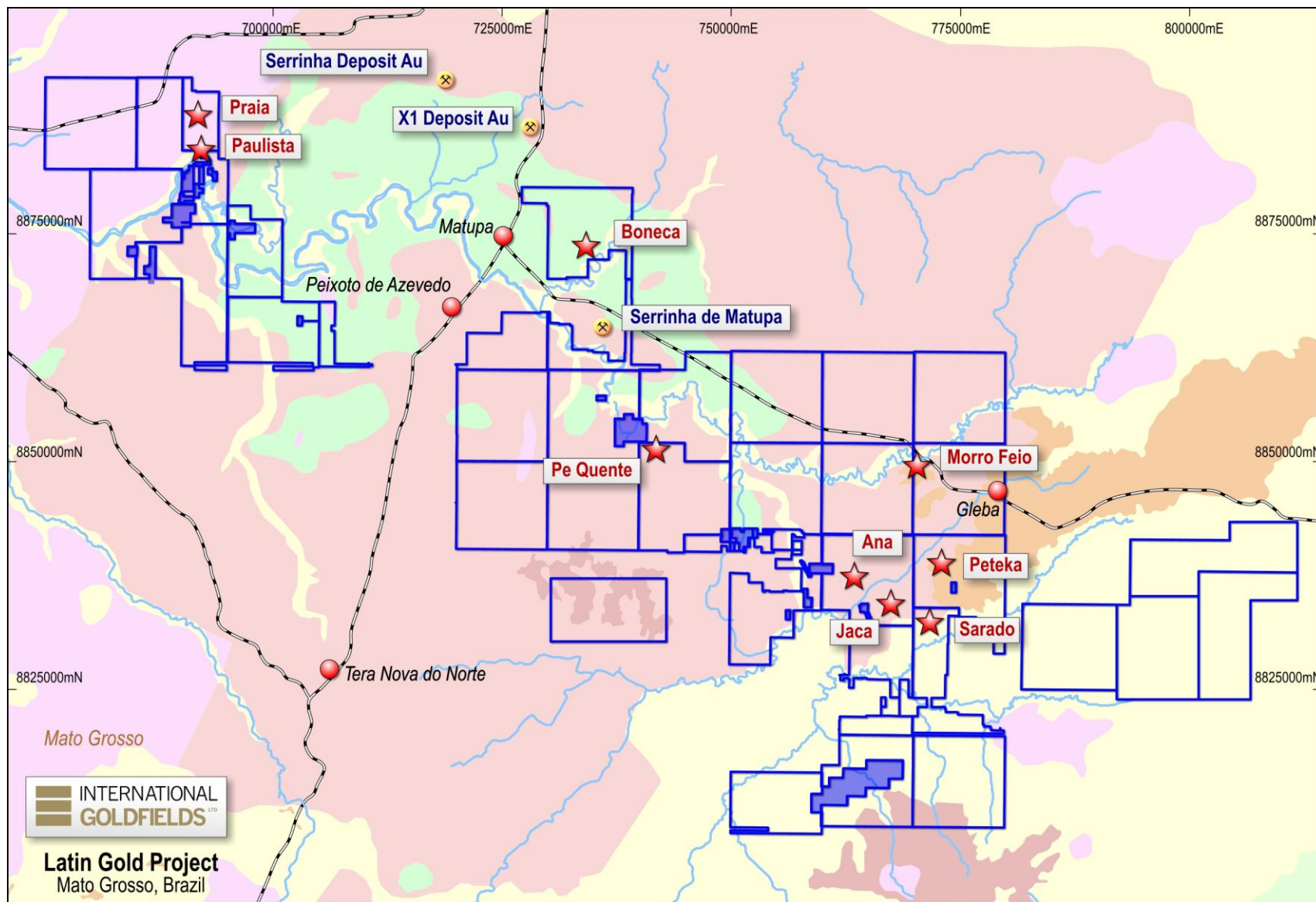


Figure 1: Latin Gold Project tenement map, prospect locations, and regional summary geology

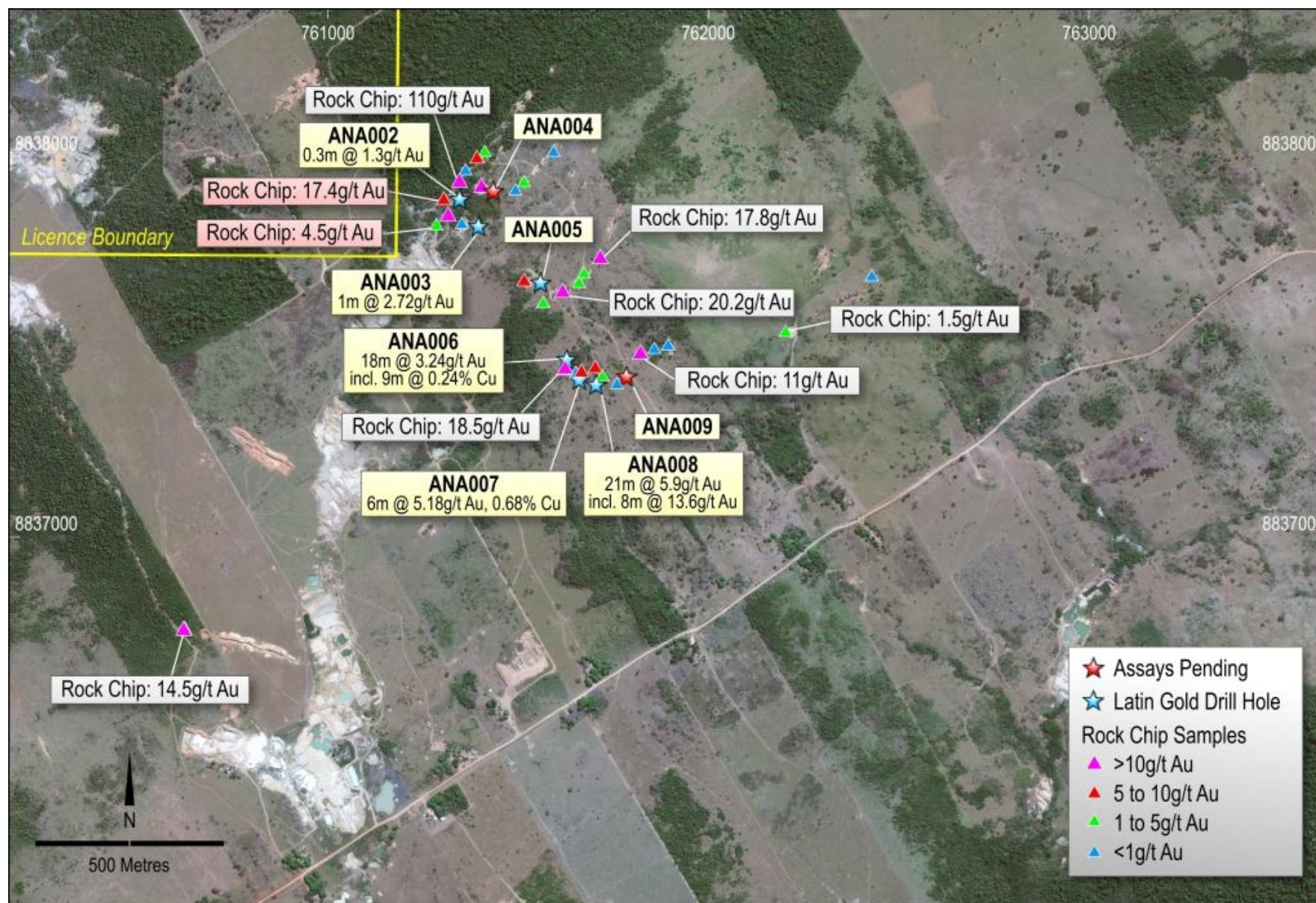


Figure 2: Ana Prospect rock chip results (new surface results in pink) and diamond drill locations

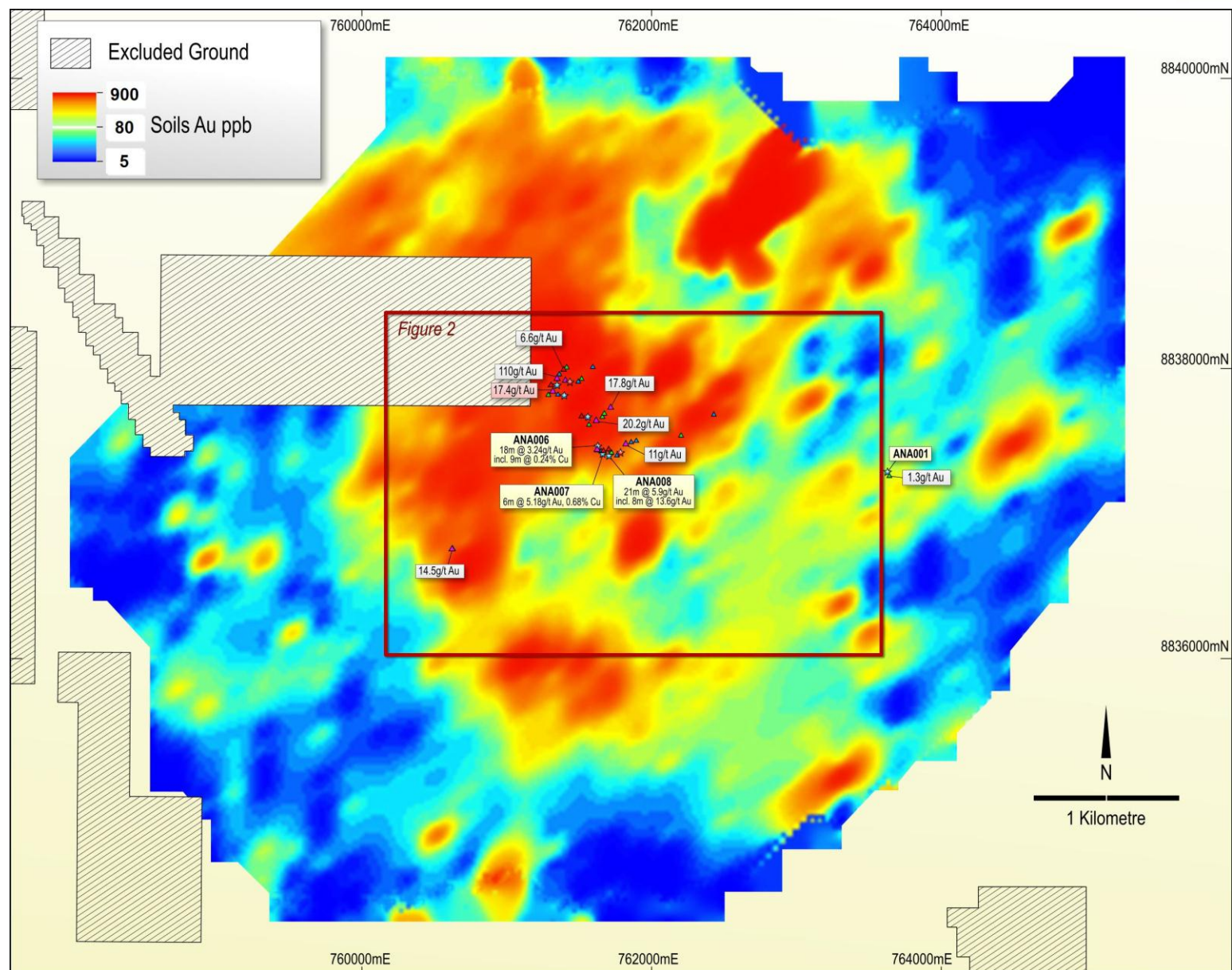


Figure 3: Ana Prospect Surface Soil Geochemistry results with diamond drill locations